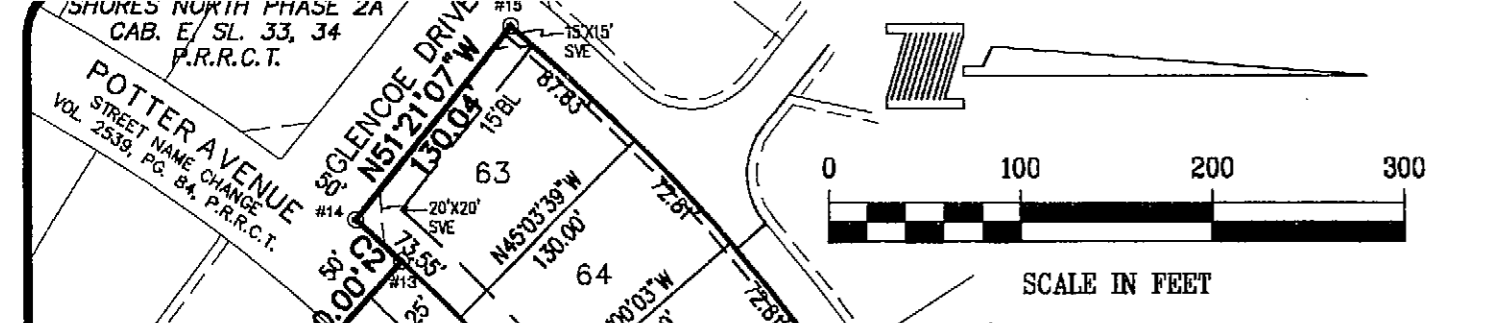


Shores North 2B
76 Lots, 19.9 Acres

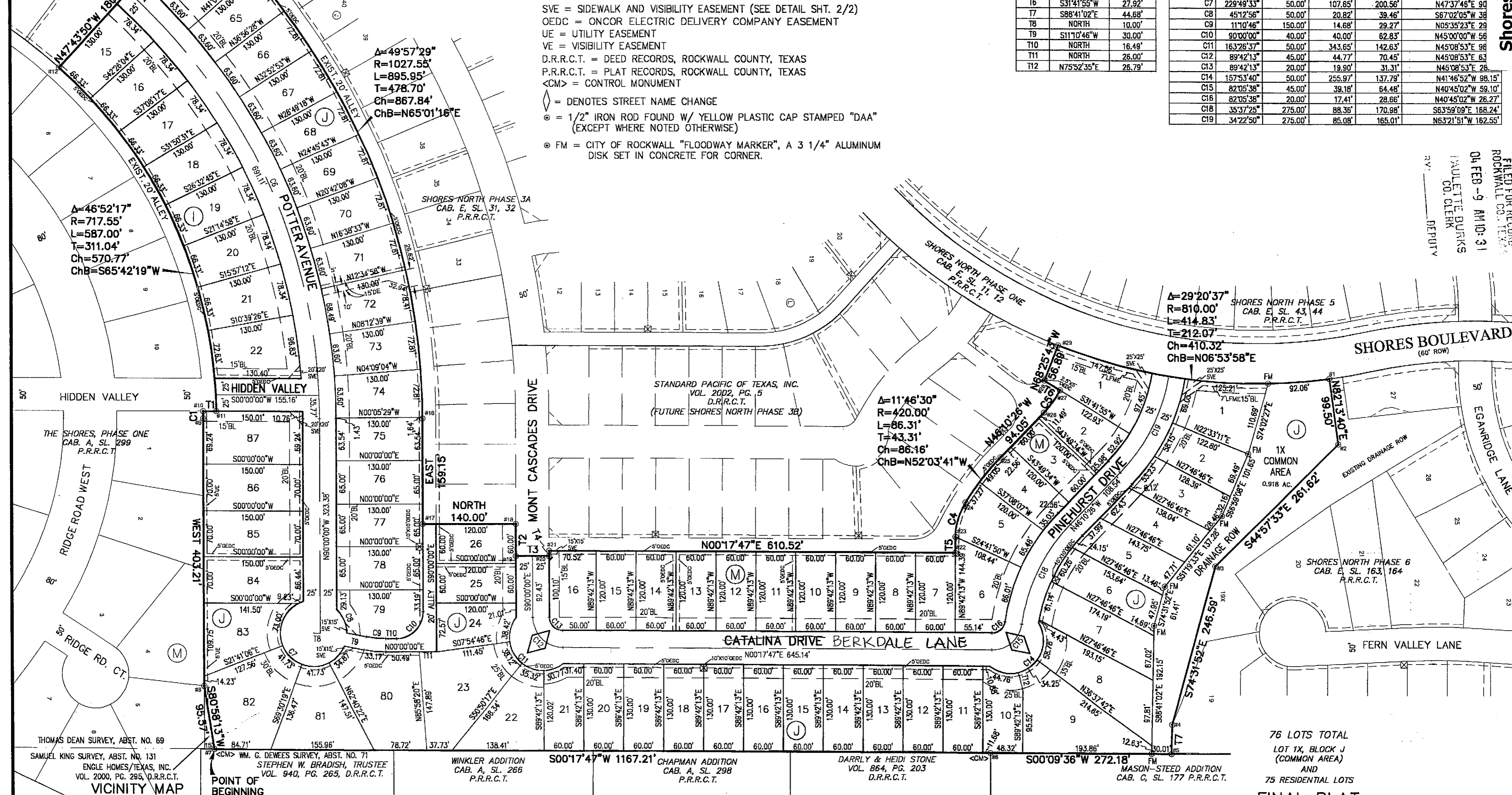


LEGEND

- BL = BUILDING LINE
- DE = DRAINAGE EASEMENT
- LFME = LANDSCAPE & FENCE MAINTENANCE EASEMENT
- IRF = IRON ROD FOUND
- LE = LANDSCAPE EASEMENT
- ROW = RIGHT-OF-WAY
- SSE = SANITARY SEWER EASEMENT
- SVE = SIDEWALK AND VISIBILITY EASEMENT (SEE DETAIL SHT. 2/2)
- OEDC = ONCOR ELECTRIC DELIVERY COMPANY EASEMENT
- UE = UTILITY EASEMENT
- VE = VISIBILITY EASEMENT
- D.R.R.C.T. = DEED RECORDS, ROCKWALL COUNTY, TEXAS
- P.R.R.C.T. = PLAT RECORDS, ROCKWALL COUNTY, TEXAS
- <CM> = CONTROL MONUMENT
- ◇ = DENOTES STREET NAME CHANGE
- ⊙ = 1/2" IRON ROD FOUND W/ YELLOW PLASTIC CAP STAMPED "DAA" (EXCEPT WHERE NOTED OTHERWISE)
- ⊙ FM = CITY OF ROCKWALL "FLOODWAY MARKER", A 3 1/4" ALUMINUM DISK SET IN CONCRETE FOR CORNER.

LINE	BEARING	LENGTH
T1	NORTH	20.00'
T2	EAST	48.73'
T3	NORTH	50.00'
T4	WEST	7.68'
T5	N89°42'13"W	24.39'
T6	S31°41'55"W	27.92'
T7	S88°41'02"E	44.68'
T8	NORTH	10.00'
T9	S11°10'46"W	30.00'
T10	NORTH	16.49'
T11	NORTH	28.00'
T12	N75°52'35"E	28.79'

CURVE	DELTA	RADIUS	TANGENT	LENGTH	CHORD
C1	0°53'03"	697.55'	5.38'	10.76'	S89°33'30"W 10
C2	2°01'32"	897.55'	15.87'	31.73'	S41°15'24"W 31
C4	31°45'17"	100.00'	28.44'	55.42'	N73°49'35"W 54
C5	15°56'12"	150.00'	21.00'	41.72'	N54°08'32"W 41
C6	47°43'50"	872.55'	386.03'	726.88'	S66°08'05"W 706
C7	229°49'33"	50.00'	107.65'	200.56'	N47°37'45"E 90
C8	45°12'58"	50.00'	20.82'	39.46'	S67°02'05"W 38
C9	11°10'46"	150.00'	14.68'	29.27'	N05°35'23"E 29
C10	90°00'00"	40.00'	40.00'	62.83'	N45°00'00"W 56
C11	163°26'37"	50.00'	343.65'	142.63'	N45°08'53"E 98
C12	89°42'13"	45.00'	44.77'	70.45'	N45°08'53"E 63
C13	89°42'13"	20.00'	19.90'	31.31'	N45°08'53"E 28
C14	157°53'40"	50.00'	255.97'	137.79'	N41°46'52"W 98.15'
C15	82°05'38"	45.00'	39.18'	64.48'	N40°45'02"W 59.10'
C16	82°05'38"	20.00'	17.41'	28.66'	N40°45'02"W 26.27'
C18	35°37'25"	275.00'	88.36'	170.98'	S63°59'09"E 168.24'
C19	34°22'50"	275.00'	85.08'	165.01'	N63°21'51"W 162.55'



ROCKWALL MONUMENTATION TABLE					
NAD 83 (HGNP) - TEXAS STATE PLANE, NORTH-CENTRAL ZONE					
1	N 7038350.731 E 2590597.633	7	N 7037881.675 E 2591181.650	13	N 7037555.431 E 2590021.771
2	N 7038365.667 E 2590695.988	8	N 7037665.263 E 2591087.509	14	N 7037531.273 E 2590001.214
3	N 7038183.354 E 2590883.591	9	N 7037659.218 E 2590684.685	15	N 7037610.940 E 2588898.458
4	N 7039121.165 E 2591122.172	10	N 7037658.972 E 2590673.629	16	N 7037989.135 E 2590679.435
5	N 7039120.816 E 2591168.846	11	N 7037678.967 E 2590673.329	17	N 7037991.523 E 2590638.547
6	N 7038848.679 E 2591170.170	12	N 7037438.389 E 2590156.756	18	N 7038131.490 E 2590836.446
7	N 7038132.221 E 2590885.175	19	N 7038182.209 E 2590884.425	20	N 7038182.094 E 2590876.747
21	N 7038946.601 E 2590621.977	22	N 7038922.627 E 2590607.687	23	N 7038792.260 E 2590846.351
24	N 7038806.708 E 2590793.585	25	N 7038858.656 E 2590724.856	26	N 7038922.753 E 2590656.045

FINAL PLAT
SHORES NORTH PHASE 2B

19.974 ACRES OUT OF THE
THOMAS DEAN SURVEY ~ ABSTRACT NO. 69
CITY OF ROCKWALL
ROCKWALL COUNTY, TEXAS

JANUARY 5, 2004 SCALE: 1" = 100'

OWNER: **NEWMARK HOMES, L.P.**
11498 Luna Road Suite 101
Dallas, Texas 75234 972-831-9803

ENGINEER: **DOWDEY, ANDERSON AND ASSOCIATES, INC.**
5225 Village Creek Drive Suite 200
Plano, Texas 75093 972-931-0694

- NOTE:**
1. BASIS OF BEARINGS DERIVED FROM THE PLAT OF SHORES NORTH PHASE 3A RECORDED IN CABINET E, SLIDES 31, 32, P.R.R.C.T.
 2. ALL LOT CORNERS ARE MONUMENTED WITH A 1/2 INCH IRON ROD WITH A YELLOW PLASTIC CAP STAMPED "DAA".
 3. "X" CUTS SET IN CONCRETE STREET PAVING AT ALL INTERSECTIONS AND POINTS OF CURVATURE.
 4. NO WALLS OR TREES IN VISIBILITY EASEMENTS.
 5. NO FENCES OR TREE REMOVAL WITHIN THE DRAINAGE R.O.W. OR EASEMENT.