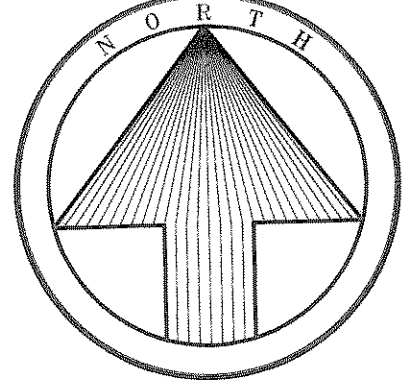


STATE PLANE COORDINATE(1983 Datum)
 N. 7,018,955.7
 E. 2,600,365.6

STATE HIGHWAY NO. 276

R = 5789.65
 D = 04°12'22"
 T = 212.61'
 L = 425.03'
 CH = 424.94'
 CB = S88°28'32"E

FILED FOR RECORD
 ROCKWALL, TEXAS
 OCT 18 PM 3:12
 DEPUTY



1" = 100'
 Bearings based on the subject tract
 Special Warranty Deed recorded in
 Vol. 1422, Pg. 225(DRRCT)

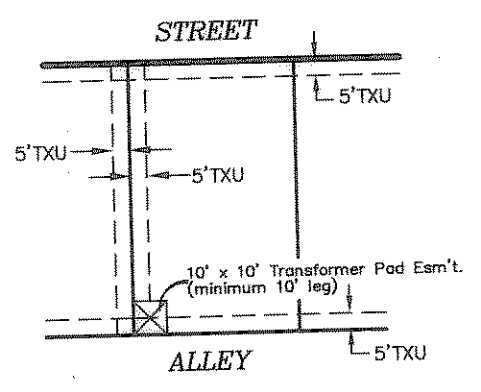
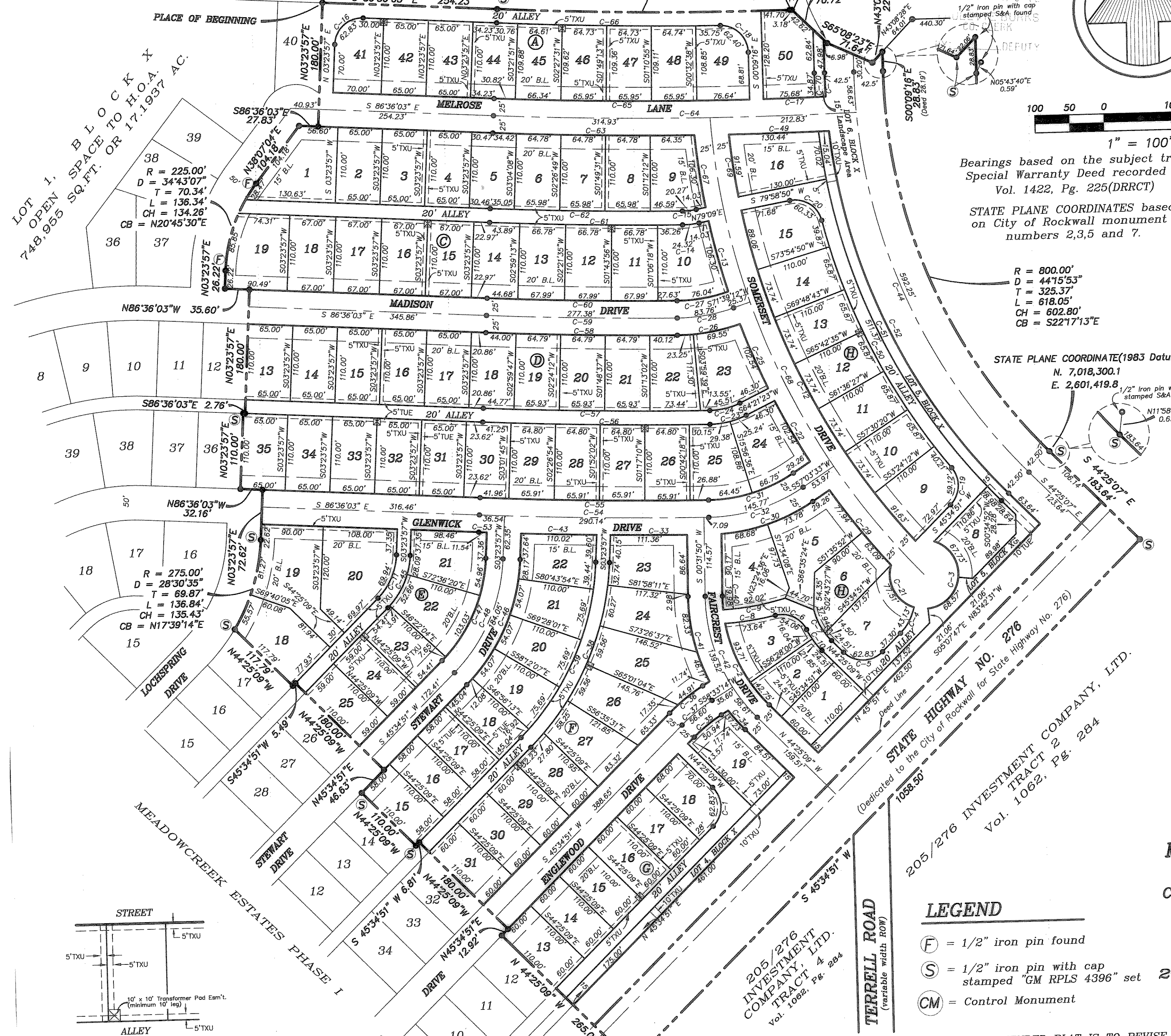
STATE PLANE COORDINATES based
 on City of Rockwall monument
 numbers 2,3,5 and 7.

R = 800.00'
 D = 44°15'53"
 T = 325.37'
 L = 618.05'
 CH = 602.80'
 CB = S22°17'13"E

STATE PLANE COORDINATE(1983 Datum)
 N. 7,018,300.1
 E. 2,601,419.8

CURVE DATA

CURVE	RADIUS	DELTA	TANGENT	LENGTH	CHORD	BEARING
C-1	40.00'	90°00'00"	40.00'	62.83'	56.57'	S 00°34'51" W
C-2	225.00'	34°45'56"	70.40'	136.46'	134.38'	N 27°02'41" W
C-3	50.00'	156°11'10"	237.12'	136.30'	97.85'	N 06°46'38" W
C-4	75.00'	32°56'49"	22.18'	43.13'	42.54'	S 29°06'27" W
C-5	40.00'	90°00'00"	40.00'	62.83'	50.04'	N 89°25'09" W
C-6	40.00'	77°26'16"	26.91'	52.44'	51.78'	S 64°15'33" E
C-7	95.00'	31°34'19"	32.07'	54.06'	56.57'	N 28°36'25" W
C-8	400.00'	10°25'57"	36.97'	73.74'	73.64'	S 82°14'17" W
C-9	385.00'	13°41'38"	46.23'	92.02'	91.80'	S 80°50'43" W
C-10	115.00'	18°52'44"	19.12'	37.89'	37.72'	N 34°58'47" W
C-11	95.00'	42°10'54"	28.14'	54.94'	54.91'	N 26°24'46" W
C-12	1030.00'	05°38'23"	53.19'	106.30'	106.26'	N 14°12'02" W
C-13	1080.00'	05°38'23"	53.19'	106.30'	106.26'	N 14°12'02" W
C-14	120.00'	11°36'52"	12.20'	24.32'	24.28'	S 84°57'26" W
C-15	100.00'	11°36'52"	10.17'	20.27'	20.24'	N 82°23'57" E
C-16	40.00'	90°00'00"	40.00'	62.83'	50.04'	S 89°10'10" W
C-17	591.95'	00°52'40"	45.34'	90.68'	90.68'	S 84°52'04" E
C-18	40.00'	89°25'36"	39.60'	62.43'	56.29'	S 85°15'08" W
C-19	40.00'	84°40'55"	36.45'	59.12'	53.88'	S 56°48'40" E
C-20	40.00'	86°25'00"	37.57'	58.94'	58.94'	N 27°18'56" W
C-21	50.00'	88°49'18"	48.96'	77.51'	69.98'	N 28°53'39" W
C-22	1080.00'	05°26'25"	51.31'	102.54'	102.51'	N 14°12'02" W
C-23	120.00'	26°04'42"	27.79'	54.62'	54.52'	S 77°23'44" W
C-24	100.00'	26°04'42"	23.16'	45.51'	45.51'	N 22°23'35" W
C-25	1080.00'	05°26'25"	51.31'	102.54'	102.51'	N 14°12'02" W
C-26	275.00'	19°21'51"	38.39'	76.04'	75.68'	S 81°10'05" W
C-27	250.00'	19°11'48"	42.28'	83.76'	83.37'	S 81°15'08" W
C-28	250.00'	19°11'48"	42.28'	83.76'	83.37'	S 81°15'08" W
C-29	1080.00'	07°28'56"	70.62'	141.03'	140.93'	S 73°45'49" W
C-30	275.00'	29°40'53"	72.87'	142.46'	131.19'	S 73°45'49" W
C-31	225.00'	33°24'32"	75.02'	145.77'	143.72'	S 73°45'49" W
C-32	6549.65'	00°58'27"	55.68'	111.36'	111.36'	N 40°32'27" W
C-33	275.00'	07°45'25"	18.64'	37.33'	37.20'	N 52°04'02" E
C-34	225.00'	12°58'23"	25.59'	50.84'	50.84'	N 52°04'02" E
C-35	280.00'	12°58'23"	31.27'	62.26'	62.13'	N 52°04'02" E
C-36	405.00'	42°10'54"	156.20'	298.16'	291.48'	S 24°29'24" W
C-37	385.00'	42°10'54"	148.49'	283.44'	277.08'	N 02°00'50" W
C-38	225.00'	05°05'20"	10.00'	19.98'	19.98'	N 12°51'00" W
C-39	225.00'	26°45'35"	65.41'	128.44'	127.28'	N 21°56'40" W
C-40	250.00'	44°56'59"	103.42'	196.13'	191.14'	N 10°02'10" W
C-41	6549.65'	00°57'45"	55.01'	110.02'	110.02'	N 87°17'13" W
C-42	842.50'	44°15'53"	342.66'	650.89'	634.82'	S 24°29'24" W
C-43	115.00'	42°10'54"	44.33'	86.66'	82.7'	S 24°29'24" W
C-44	115.00'	42°10'54"	106.06'	202.46'	197.92'	S 24°29'24" W
C-45	275.00'	42°10'54"	86.78'	165.64'	161.93'	S 24°29'24" W
C-46	225.00'	42°10'54"	96.42'	184.05'	179.92'	S 24°29'24" W
C-47	250.00'	42°10'54"	106.06'	202.46'	197.92'	S 24°29'24" W
C-48	5969.65'	01°23'47"	72.75'	145.48'	145.48'	S 89°24'21" W
C-49	920.00'	25°59'51"	208.16'	408.42'	406.05'	N 26°21'07" W
C-50	900.00'	38°51'26"	317.44'	610.36'	598.74'	N 24°59'26" W
C-51	885.00'	38°47'00"	311.51'	599.05'	587.68'	N 25°01'39" W
C-52	6549.65'	00°06'03"	5.77'	11.54'	11.54'	N 86°39'04" W
C-53	6524.65'	02°55'52"	166.92'	333.77'	333.73'	N 88°03'59" W
C-54	6499.65'	02°55'52"	166.28'	332.49'	332.46'	N 88°03'59" W
C-55	6499.65'	02°55'52"	165.33'	330.59'	330.56'	N 88°04'59" W
C-56	6369.65'	02°57'52"	164.82'	329.56'	329.52'	N 88°04'59" W
C-57	6259.65'	02°32'57"	139.27'	278.49'	278.47'	N 87°52'31" W
C-58	6234.65'	02°32'57"	138.71'	277.36'	276.25'	N 87°52'31" W
C-59	6209.65'	02°32'57"	138.16'	276.28'	276.25'	N 87°55'06" W
C-60	6099.65'	02°38'05"	140.27'	280.49'	280.47'	N 87°55'06" W
C-61	6079.65'	02°38'05"	139.81'	279.57'	279.56'	N 88°00'27" W
C-62	5969.65'	02°48'48"	146.59'	293.11'	293.08'	N 88°03'59" W
C-63	5944.65'	05°05'12"	264.05'	527.76'	527.58'	N 88°23'58" W
C-64	5919.65'	03°35'50"	185.89'	371.65'	371.59'	N 87°58'38" W
C-65	5809.65'	03°12'28"	162.68'	325.27'	325.27'	N 87°29'59" W
C-66	1080.00'	05°38'23"	53.19'	106.30'	106.26'	N 14°12'02" W
C-67	1055.00'	40°38'00"	390.61'	748.19'	732.61'	N 23°45'25" W
C-68	1030.00'	05°05'42"	45.83'	91.56'	91.56'	N 07°28'19" W
C-69	900.00'	02°13'24"	17.30'	34.87'	34.87'	N 01°15'52" W
C-70	885.00'	02°14'24"	17.30'	34.60'	34.60'	N 01°16'28" W



Typical TXU Easements

STATE PLANE COORDINATE(1983 Datum)
 N. 7,017,415.8
 E. 2,600,810.0

LEGEND

- (F) = 1/2" iron pin found
- (S) = 1/2" iron pin with cap stamped "GM RPLS 4396" set
- (CM) = Control Monument

REASON FOR THIS AMENDED PLAT IS TO REVISE
 THE SHOWN SIDE BUILDING LINE OF LOTS 1 and
 8, BLOCK H and LOT 50, BLOCK A.

AMENDED
 FINAL PLAT
 MEADOWCREEK ESTATES PHASE II
 JOSEPH CADLE SURVEY, ABSTRACT NO. 65
 CITY OF ROCKWALL, ROCKWALL COUNTY, TEXAS

OWNERS
 CENTEX HOMES
 2800 Surveyor Boulevard ~ Carrollton, Texas 75006
 972.417.3562
 205/276 INVESTMENT COMPANY, LTD.
 107 West Main St. ~ POB 1080 ~ Decatur, Texas 76234
 940.627.0900

ENGINEERING/SURVEYING/PLANNING
 TIPTON ENGINEERING, INC.
 6330 Broadway Blvd. ~ Suite C ~ Garland, Texas 75043
 972.226.2967