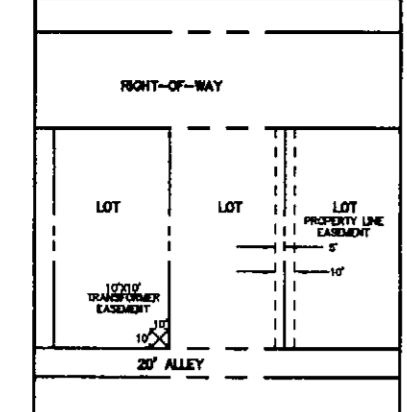


**COORDINATE TABLE**

NUMBER	NORTHING	EASTING
1	7018101.1984	2605596.5572
2	7018032.5655	2605570.7660
3	7017487.4121	2605389.1051
4	7017325.7536	2605365.1821
5	7017086.3638	2605371.8434
6	7017067.1434	2604677.2439
7	7017207.2846	2604673.3443
8	7017207.0027	2604663.2136
9	7017306.1435	2604660.4549
10	7017710.2898	2604720.2625
11	7017882.6683	2604777.7040
12	7017935.3108	2604740.2485
15	7018066.8348	2604682.7283
16	7018154.1708	2604882.4284
17	7018173.0005	2604969.4055
18	7018173.5656	2605009.3980
19	7018163.5882	2605009.2616
20	7018161.7965	2605059.2295
21	7018174.2720	2605059.3936
22	7018178.2123	2605338.2730
23	7018168.1596	2605338.0588
24	7018165.9778	2605388.0112
25	7018178.9187	2605388.2715
26	7018178.9703	2605391.9227
27	7018158.4702	2605488.9841
28	7018132.8388	2605544.8095
29	7018124.4120	2605541.2298

**TYPICAL ELECTRIC EASEMENTS TO TXU ELECTRIC**

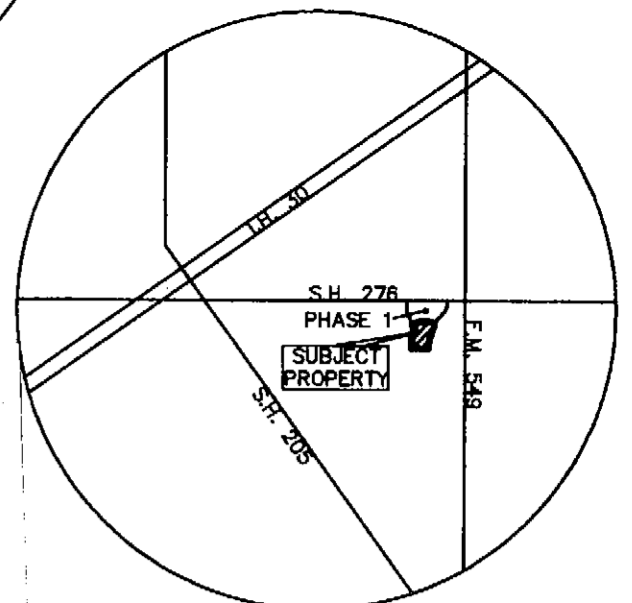


LOFLAND FARMS  
PHASE 1  
CAB. D, PGS. 283-284  
( DRRCT )

LOFLAND FARMS, PHASE 1  
CONTINENTAL HOMES  
VOLUME 01780, PAGE 0257  
( DRRCT )

**NOTES:**  
1. NO FENCES OR OTHER STRUCTURES SHALL BE CONSTRUCTED OR PLACED WITHIN DEDICATED DRAINAGE EASEMENTS.  
2. A 10'x10' VISIBILITY EASEMENT SHALL BE AT ALL ALLEY AND STREET INTERSECTIONS.  
3. A 25'x25' VISIBILITY EASEMENT SHALL BE AT ALL STREET INTERSECTIONS.

FILED FOR RECORD  
ROCKWALL COUNTY, TEXAS  
01 MAY -1 AM 8:25  
PAULETTE BURKS  
CO. CLERK  
BY: \_\_\_\_\_ DEPUTY



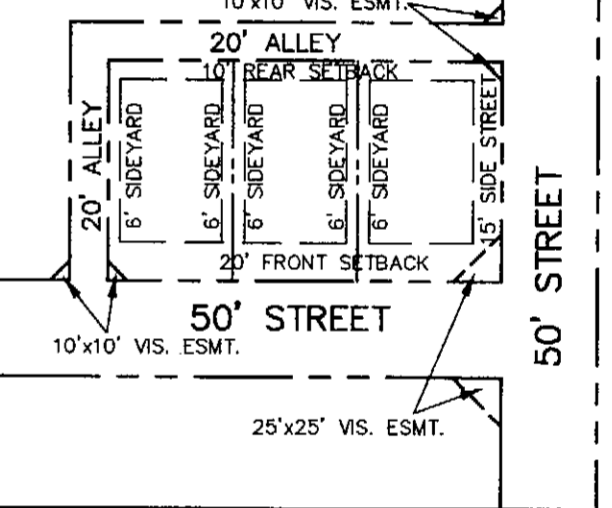
**Winkelmann & Associates, Inc.**  
Lofland Farms 2

**LOT AREA TABLE**

BLOCK	LOT	SQ. FT.	BLOCK	LOT	SQ. FT.	BLOCK	LOT	SQ. FT.
K	5	9000	M	1	11306	N	8	8414
K	6	9000	M	2	8754	N	9	8415
K	7	9000	M	3	8580	N	10	8416
K	8	10522	M	4	8580	N	11	8417
K	9	10284	M	5	8520	N	12	8417
K	10	9000	M	6	8640	N	13	8655
K	11	9000	M	7	8640	N	14	9753
K	12	9121	M	8	8520	N	15	11794
K	13	9331	M	9	8166	N	16	8693
K	14	9331	M	10	8446	N	17	8404
K	15	9331	M	11	8446	N	18	8400
K	16	9331	M	12	8446	N	19	8409
K	17	9331	M	13	9280	N	20	10578
K	18	9202	M	14	8831			
			M	15	8564			
			M	16	8564			
			M	17	8564			
			M	18	8591			
			M	19	8535			
			M	20	8400			
			M	21	8400			
			M	22	8400			
			M	23	8400			
			M	24	8400			
			M	25	9081			
			M	26	10266			

R = 970.00'  
D = 04'19'55"  
T = 36.69'  
L = 73.34'  
CH = 73.32'  
CB = S20'23'39"W

**TYPICAL BUILDING SETBACKS AND VISIBILITY EASEMENTS**  
10'x10' VIS. ESMT.



**TANGENT TABLE**

TANGENT BEARING	LENGTH
T1	N 66°10'38" E 217.96'
T2	N 18°13'42" E 278.12'
T3	N 01°47'43" W 49.18'
T4	N 01°47'43" W 49.18'
T5	N 18°13'42" E 457.98'
T6	S 18°13'42" E 457.98'
T7	S 01°47'43" E 49.18'
T8	N 18°13'42" E 372.00'
T9	N 18°13'42" W 455.90'
T10	N 01°47'43" W 193.47'
T11	S 01°47'43" E 239.48'
T12	N 88°12'49" E 583.86'
T13	N 88°59'21" E 33.98'
T14	N 88°59'21" E 10.99'
T15	N 88°59'21" E 4.01'

**CURVE TABLE**

CURVE	RADIUS	DELTA	TANGENT	LENGTH	CHORD	BEARING
C-1	225.00'	22°48'43"	45.39'	89.58'	88.99'	N 77°34'59" E
C-2	225.00'	02°32'28"	4.99'	9.98'	9.98'	S 00°34'54" W
C-3	275.00'	02°35'59"	6.24'	12.48'	12.48'	N 00°33'08" E
C-4	225.00'	02°33'38"	5.03'	10.06'	10.06'	S 01°01'10" W
C-5	275.00'	02°41'49"	6.47'	12.94'	12.94'	N 00°57'04" E
C-6	225.00'	25°28'16"	50.85'	100.02'	99.20'	S 78°16'31" W
C-7	95.00'	22°48'43"	19.17'	37.82'	37.57'	N 77°34'59" E
C-8	1165.00'	20°01'25"	205.67'	407.14'	405.07'	N 08°12'59" E
C-9	1010.00'	20°01'25"	178.30'	352.97'	351.18'	N 08°12'59" E
C-10	250.00'	16°22'34"	35.97'	71.45'	71.45'	N 08°41'53" E
C-11	405.00'	19°03'37"	67.99'	134.73'	134.11'	S 08°41'53" W
C-12	855.00'	20°01'25"	150.94'	298.80'	297.28'	S 08°12'59" W
C-13	34.50'	90°00'00"	34.50'	48.79'	48.79'	N 08°12'59" W
C-14	700.00'	20°01'25"	123.58'	244.63'	243.39'	N 08°12'59" W
C-15	250.00'	15°55'43"	34.98'	69.28'	69.50'	N 10°15'50" E
C-16	36.00'	90°00'00"	36.00'	50.91'	50.91'	N 08°12'59" W
C-17	36.00'	90°00'00"	36.00'	50.91'	50.91'	N 08°12'59" W
C-18	1000.00'	04°19'55"	37.82'	75.60'	75.59'	N 08°12'59" W
C-19	500.00'	20°01'25"	88.27'	174.74'	173.85'	N 08°12'59" W
C-20	36.00'	90°00'32"	36.01'	50.92'	50.92'	N 08°12'59" W
C-21	545.00'	08°19'45"	39.68'	79.23'	79.16'	N 02°22'09" W
C-22	36.00'	85°27'32"	33.25'	53.70'	48.85'	N 36°11'44" W
C-23	105.00'	22°48'43"	21.18'	41.81'	41.53'	N 77°34'59" E
C-24	225.00'	16°22'34"	32.38'	64.31'	64.09'	N 10°02'25" E
C-25	1035.00'	19°03'52"	69.69'	139.09'	137.45'	N 08°12'59" W
C-26	1155.00'	20°01'25"	182.72'	361.71'	359.87'	N 08°12'59" W
C-27	26.00'	20°01'25"	203.90'	403.84'	401.59'	N 08°12'59" W
C-28	85.00'	22°48'43"	17.15'	33.84'	33.62'	N 77°34'59" W
C-29	275.00'	16°22'34"	39.57'	78.60'	78.33'	S 10°02'25" W
C-30	985.00'	20°01'25"	173.89'	344.23'	342.48'	N 08°12'59" W
C-31	885.00'	20°01'25"	152.71'	302.30'	300.76'	N 08°12'59" W
C-32	395.00'	19°03'21"	66.30'	131.37'	130.77'	N 08°42'01" W
C-33	415.00'	19°03'52"	69.69'	139.09'	137.45'	N 08°12'59" W
C-34	845.00'	20°01'25"	149.17'	298.31'	293.81'	N 08°12'59" W
C-35	725.00'	20°01'25"	127.99'	253.37'	252.08'	N 08°12'59" W
C-36	225.00'	15°55'43"	31.48'	62.55'	62.35'	N 10°15'50" E
C-37	275.00'	12°50'52"	30.96'	61.66'	61.54'	N 08°43'25" W
C-38	26.00'	90°00'00"	26.00'	40.84'	36.77'	N 26°46'18" W
C-39	26.00'	90°00'00"	26.00'	40.84'	36.77'	N 63°13'42" E
C-40	1030.00'	04°19'55"	38.95'	77.87'	77.85'	N 20°23'39" W
C-41	530.00'	19°46'40"	92.39'	182.95'	182.04'	N 08°05'37" W
C-42	675.00'	08°57'37"	41.05'	82.00'	81.95'	N 14°31'19" E
C-43	26.00'	90°00'32"	26.00'	40.84'	36.77'	N 43°12'33" E
C-44	555.00'	08°19'45"	40.41'	80.68'	80.61'	N 02°22'09" W
C-45	26.00'	85°27'32"	24.02'	38.78'	35.28'	N 36°11'44" W
C-46	675.00'	11°10'20"	66.02'	131.62'	131.41'	N 03°47'27" W
C-47	50.00'	178°21'34"	3492.23'	155.65'	99.99'	S 43°12'17" W
C-48	535.00'	12°52'13"	60.34'	120.18'	119.92'	S 04°38'23" W
C-49	1035.00'	00°26'55"	4.05'	8.10'	8.10'	N 18°27'09" E

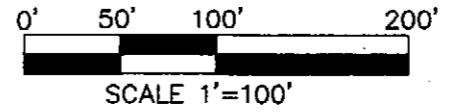
MELROSE FINANCIAL  
VOLUME 1392, PAGE 271  
( DRRCT )

R = 40.00'  
D = 107°43'24"  
T = 54.78'  
L = 75.21'  
CH = 64.61'  
CB = N 35°38'00" W

R = 1175.00'  
D = 20°01'25"  
T = 207.43'  
L = 410.63'  
CH = 408.55'  
CB = N08°12'59"E

R = 470.00'  
D = 20°01'25"  
T = 82.97'  
L = 164.25'  
CH = 163.42'  
CB = S08°12'59"W

LOT 20, BLOCK N  
5' FOR SCREENING PURPOSES  
( TO BE DEDICATED TO AND MAINT. BY THE H.O.A. )



M.H. BARD SURVEY, ABSTRACT NO. 25  
CITY OF ROCKWALL  
ROCKWALL COUNTY, TEXAS

FINAL PLAT  
LOFLAND FARMS, PHASE 2  
60 RES. LOTS - 18.630 ACRES

Scale: 1"=100' Date: 4-3-01  
Designed By: MK  
Drawn By: MK  
Checked By: BJE  
File: 3200FFPDWG  
Project No.: 3200/02

**SHEET**  
1  
2

34