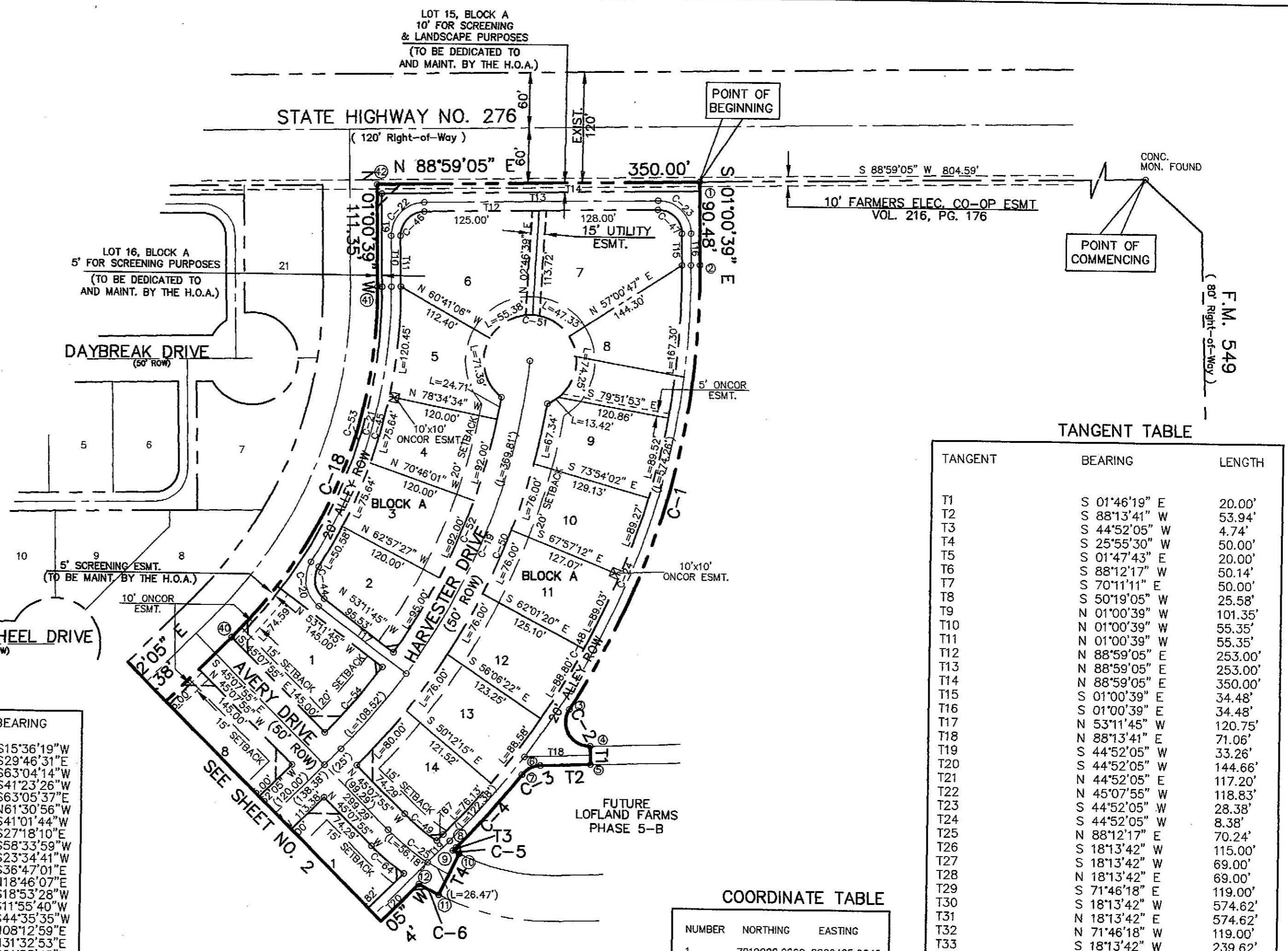
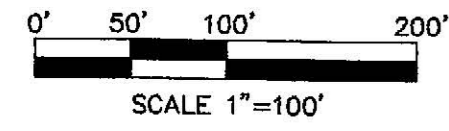


LOCATION MAP
 MAPSCO PAGE 30-D
 N.T.S.

LOFLAND FARMS
 PHASE 1
 CAB. D, PGS. 283-284



CURVE TABLE

CURVE	RADIUS	DELTA	TANGENT	LENGTH	CHORD	BEARING
C-1	880.00'	33°13'56"	262.61'	510.41'	503.28'	S15°36'19"W
C-2	26.00'	123°59'36"	48.89'	56.27'	45.91'	S29°46'31"E
C-3	26.00'	50°18'54"	12.21'	22.83'	22.11'	S63°04'14"W
C-4	880.00'	06°57'18"	53.48'	106.82'	106.76'	S41°23'26"W
C-5	225.00'	01°57'47"	3.85'	7.71'	7.71'	S63°05'37"E
C-6	275.00'	05°07'09"	12.29'	24.57'	24.56'	N61°30'56"W
C-7	635.00'	07°40'41"	42.61'	85.09'	85.03'	S41°01'44"W
C-8	26.00'	128°59'07"	54.49'	58.53'	46.93'	S27°18'10"E
C-9	26.00'	59°16'36"	14.79'	26.90'	25.72'	S58°33'59"W
C-10	635.00'	10°41'59"	59.47'	118.58'	118.41'	S23°34'41"W
C-11	26.00'	110°01'25"	37.15'	49.93'	42.60'	S36°47'01"E
C-12	225.00'	02°05'24"	4.10'	8.21'	8.21'	N18°46'07"E
C-13	175.00'	01°50'42"	2.82'	5.64'	5.64'	S18°53'28"W
C-14	55.00'	76°46'50"	43.58'	73.70'	68.31'	S11°55'40"W
C-15	59.50'	92°41'30"	62.36'	96.26'	86.10'	S44°35'35"W
C-16	470.00'	20°01'25"	82.97'	164.25'	163.42'	N08°12'59"E
C-17	970.00'	26°38'23"	229.65'	451.00'	446.95'	N31°32'53"E
C-18	530.00'	45°52'44"	224.31'	424.39'	413.14'	N21°55'43"E
C-19	700.00'	39°09'08"	248.93'	478.33'	469.07'	N25°17'32"E
C-20	36.00'	85°27'32"	33.25'	53.70'	48.85'	N10°27'59"W
C-21	545.00'	33°16'26"	162.85'	316.50'	312.07'	N15°37'34"E
C-22	36.00'	89°59'44"	36.00'	56.55'	50.91'	N43°59'13"E
C-23	36.00'	90°00'16"	36.00'	56.55'	50.91'	S46°00'47"E
C-24	870.00'	45°52'44"	368.21'	696.64'	678.18'	S21°55'43"W
C-25	250.00'	18°56'35"	41.71'	82.65'	82.28'	S54°36'13"E
C-26	800.00'	26°38'23"	189.41'	371.96'	368.62'	S31°32'53"W
C-27	300.00'	20°01'25"	52.96'	104.84'	104.31'	S08°12'59"W
C-28	34.50'	89°59'28"	34.49'	54.19'	48.79'	S46°47'27"E
C-29	34.50'	90°00'00"	34.50'	54.19'	48.79'	N43°12'49"E
C-30	500.00'	24°40'34"	109.37'	215.34'	213.68'	N14°07'28"W
C-31	200.00'	46°16'34"	85.46'	161.53'	157.18'	N03°19'28"W
C-32	36.00'	91°05'56"	36.70'	57.24'	51.40'	S89°19'07"W
C-33	955.00'	25°32'27"	216.45'	425.71'	422.20'	S30°59'55"W
C-34	36.00'	90°00'00"	36.00'	56.55'	50.91'	S26°46'18"E
C-35	36.00'	90°00'00"	36.00'	56.55'	50.91'	S63°13'42"W
C-36	455.00'	20°01'25"	80.32'	159.01'	158.20'	S08°12'59"W
C-37	36.00'	89°59'28"	35.99'	56.54'	50.91'	S46°47'27"E
C-38	36.00'	90°00'00"	36.00'	56.55'	50.91'	N43°12'49"E
C-39	36.00'	90°00'00"	36.00'	56.55'	50.91'	S46°47'11"E
C-40	26.00'	90°00'00"	26.00'	40.84'	36.77'	S43°12'49"W
C-41	36.00'	90°00'00"	36.00'	56.55'	50.91'	S43°12'49"W
C-42	645.00'	26°38'23"	152.71'	299.89'	297.20'	S31°32'53"W
C-43	145.00'	20°01'25"	25.60'	50.67'	50.42'	S08°12'59"W
C-44	26.00'	85°27'32"	24.02'	38.78'	35.28'	N10°27'59"W
C-45	555.00'	33°16'26"	165.84'	322.31'	317.80'	N15°37'34"E
C-46	26.00'	89°59'44"	26.00'	40.84'	36.77'	N43°59'13"E
C-47	26.00'	90°00'16"	26.00'	40.84'	36.77'	S46°00'47"E
C-48	860.00'	45°52'44"	363.98'	688.63'	670.38'	S21°55'43"W
C-49	225.00'	11°43'16"	23.09'	46.03'	45.95'	N50°59'33"W
C-50	725.00'	35°40'06"	233.25'	451.34'	444.08'	N27°02'02"E
C-51	50.00'	299°58'06"	28.89'	261.77'	50.02'	N82°30'39"W
C-52	675.00'	25°46'48"	154.47'	303.71'	301.16'	S22°12'59"W
C-53	535.00'	37°48'54"	183.25'	353.10'	346.72'	N17°53'48"E
C-54	675.00'	08°03'50"	47.58'	95.00'	94.92'	S40°50'10"W
C-55	825.00'	26°38'23"	195.32'	383.58'	380.14'	S31°32'53"W

CURVE TABLE

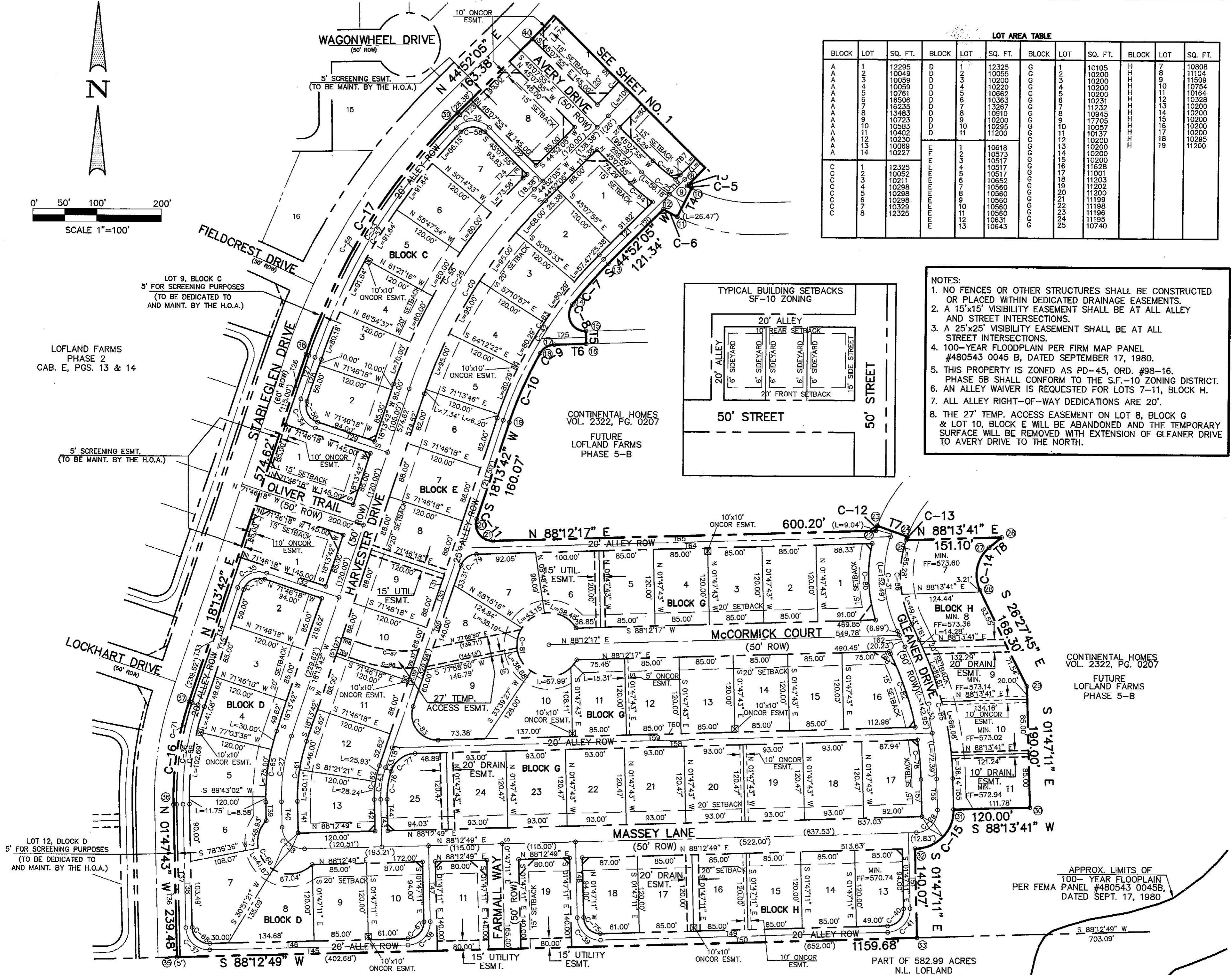
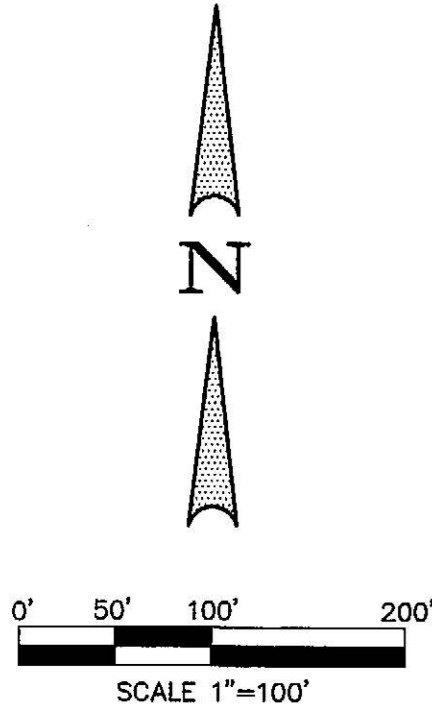
CURVE	RADIUS	DELTA	TANGENT	LENGTH	CHORD	BEARING
C-56	26.00'	90°00'00"	26.00'	40.84'	36.77'	N26°46'18"W
C-57	945.00'	25°32'27"	214.19'	421.25'	417.78'	N30°59'55"E
C-58	26.00'	91°05'56"	26.50'	41.34'	37.12'	N89°19'07"E
C-59	965.00'	26°38'23"	228.47'	448.67'	444.65'	N31°32'53"E
C-60	775.00'	26°38'23"	183.49'	360.34'	357.10'	S31°32'53"W
C-61	275.00'	20°01'25"	48.55'	96.11'	95.62'	S08°12'59"W
C-62	155.00'	20°01'25"	27.36'	54.17'	53.89'	N08°12'59"E
C-63	655.00'	26°38'23"	155.08'	304.54'	301.81'	N49°54'57"W
C-64	275.00'	09°34'04"	23.01'	45.92'	45.87'	N31°32'53"E
C-65	325.00'	20°01'25"	57.37'	113.58'	113.00'	S08°12'59"W
C-66	50.00'	178°21'15"	3481.02'	155.84'	99.99'	S46°47'27"E
C-67	26.00'	90°00'00"	26.00'	40.84'	36.77'	S43°12'49"W
C-68	26.00'	89°59'28"	26.00'	40.84'	36.77'	N46°47'27"W
C-69	445.00'	20°01'25"	78.56'	155.52'	154.73'	N08°12'59"E
C-70	26.00'	90°00'00"	26.00'	40.84'	36.77'	N63°13'42"E
C-71	465.00'	20°01'25"	82.09'	162.51'	161.68'	S08°12'59"W
C-72	-	-	-	-	-	-
C-73	-	-	-	-	-	-
C-74	-	-	-	-	-	-
C-75	26.00'	90°00'00"	26.00'	40.84'	36.77'	N46°47'11"W
C-76	135.00'	18°55'52"	22.51'	44.61'	44.40'	N07°40'13"E
C-77	40.00'	71°04'08"	28.57'	49.62'	46.50'	N52°40'13"E
C-78	475.00'	07°30'57"	31.20'	62.31'	62.26'	S05°32'40"E
C-79	26.00'	69°58'35"	18.20'	31.75'	29.82'	N53°12'59"E
C-80	225.00'	30°56'24"	62.27'	121.50'	120.03'	S03°04'11"E
C-81	50.00'	300°00'00"	28.87'	261.80'	50.00'	S01°47'43"E
C-82	475.00'	14°43'09"	61.35'	122.03'	121.69'	S19°06'10"E
C-83	40.00'	110°01'25"	57.15'	76.81'	65.54'	S36°47'01"W
C-84	-	-	-	-	-	-
C-85	525.00'	24°40'34"	114.83'	226.11'	224.36'	N14°07'28"W
C-86	175.00'	44°25'52"	71.47'	135.71'	132.33'	N04°14'49"W
C-87	200.00'	24°47'09"	43.95'	86.52'	85.85'	N84°09'53"W
C-88	227.00'	21°40'35"	43.46'	85.88'	85.37'	N82°36'36"W

COORDINATE TABLE

NUMBER	NORTHING	EASTING
1	7019028.2660	2606425.6242
2	7018937.7980	2606427.2204
3	7018453.0657	2606291.8328
4	7018413.2152	2606314.6328
5	7018393.2248	2606315.2513
6	7018391.5569	2606261.3375
7	7018381.5454	2606241.6289
8	7018301.4551	2606171.0435
9	7018298.0969	2606167.7008
10	7018294.6084	2606174.5751
11	7018249.8400	2606152.7155
12	7018261.3541	2606131.1269
13	7018175.3556	2606045.5238
14	7018111.2102	2605989.7062
15	7018069.5071	2606011.2333
16	7018049.5169	2606011.8598
17	7018047.9460	2605961.7419
18	7018034.5352	2605939.8005
19	7017926.0084	2605892.4356
20	7017773.9742	2605842.3664
21	7017739.8541	2605867.8762
22	7017758.6574	2606467.7823
23	7017766.4281	2606470.4229
24	7017749.4799	2606517.4629
25	7017744.1484	2606515.6384
26	7017748.8206	2606666.6677
27	7017732.4893	2606646.9839
28	7017665.6526	2606632.8654
29	7017514.9829	2606707.8633
30	7017325.0750	2606713.7863
31	7017321.3644	2606593.8437
32	7017260.0525	2606533.3966
33	7017120.0506	2606537.7630
34	-	-
35	7017083.9023	2605378.6504
36	7017323.2672	2605371.1476
37	7017485.0057	2605394.5026
38	7018030.7972	2605574.2465
39	7018411.6899	2605808.0978
40	7018527.4796	2605923.3552
41	7018910.7316	2606077.6435
42	7019022.0643	2606075.6791

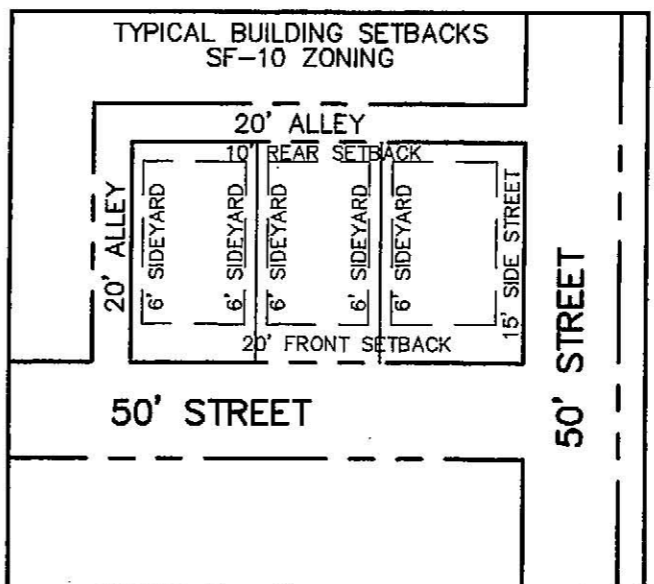
TANGENT TABLE

TANGENT	BEARING	LENGTH
T1	S 01°46'19" E	20.00'
T2	S 88°13'41" W	53.94'
T3	S 44°52'05" W	4.74'
T4	S 25°55'30" W	50.00'
T5	S 01°47'43" E	20.00'
T6	S 88°12'17" W	50.14'
T7	S 70°11'11" E	50.00'
T8	S 50°19'05" W	25.58'
T9	N 01°00'39" W	101.35'
T10	N 01°00'39" W	55.35'
T11	N 01°00'39" W	55.35'
T12	N 88°59'05" E	253.00'
T13	N 88°59'05" E	253.00'
T14	N 88°59'05" E	350.00'
T15	S 01°00'39" E	34.48'
T16	S 01°00'39" E	34.48'
T17	N 53°11'45" W	120.75'
T18	N 88°13'41" E	71.06'
T19	S 44°52'05" W	33.26'
T20	S 44°52'05" W	144.66'
T21	N 44°52'05" E	117.20'
T22	N 45°07'55" W	118.83'
T23	S 44°52'05" W	28.38'
T24	S 44°52'05" W	8.38'
T25	N 88°12'17" E	70.24'
T26	S 18°13'42" W	115.00'
T27	S 18°13'42" W	69.00'
T28	N 18°13'42" E	69.00'
T29	S 71°46'18" E	119.00'
T30	S 18°13'42" W	574.62'
T31	N 18°13'42" E	574.62'
T32	N 71°46'18" W	119.00'
T33	S 18°13'42" W	239.62'
T34	S 18°13'42" W	193.62'
T35	N 18°13'42" E	193.62'
T36	S 01°47'43" E	239.48'
T37	S 01°47'43" E	193.49'
T38	N 01°47'43" W	193.49'
T39	S 01°47'43" E	28.81'
T40	S 01°47'43" E	40.01'
T41	S 01°47'43" E	49.51'
T42	N 01°47'43" W	49.53'
T43	S 01°47'43" E	74.53'
T44	N 01°47'43" W	49.53'
T45	N 88°12'49" E	310.68'
T46	S 88°12'49" W	310.68'
T47	N 01°47'11" W	119.00'
T48	S 01°47'11" E	119.00'
T49	S 88°12'49" W	450.00'
T50	N 88°12'49" E	450.00'
T51	S 01°47'11" E	119.00'
T52	-	-
T53	-	-
T54	-	-
T55	N 01°47'11" W	37.65'
T56	N 01°47'11" W	48.85'



LOT AREA TABLE

BLOCK	LOT	SQ. FT.	BLOCK	LOT	SQ. FT.	BLOCK	LOT	SQ. FT.	BLOCK	LOT	SQ. FT.
A	1	12295	D	1	12325	G	1	10105	H	7	10808
A	2	10043	D	2	10055	G	2	10105	H	8	11104
A	3	10059	D	3	10062	G	3	10105	H	9	11509
A	4	10761	D	4	10220	G	4	10200	H	10	10754
A	5	16506	D	5	10662	G	5	10200	H	11	10164
A	6	16235	D	6	10363	G	6	10231	H	12	10328
A	7	13483	D	7	13287	G	7	11232	H	13	10200
A	8	10723	D	8	10910	G	8	10945	H	14	10200
A	9	10583	D	9	10200	G	9	10200	H	15	10200
A	10	10402	D	10	10298	G	10	10200	H	16	10200
A	11	10230	D	11	10227	G	11	10137	H	17	10200
A	12	10069	D	12	10618	G	12	10200	H	18	10295
A	13	10227	D	13	10573	G	13	10200	H	19	11200
C	1	12325	E	1	10517	G	14	10200			
C	2	10252	E	2	10517	G	15	10200			
C	3	10211	E	3	10517	G	16	11628			
C	4	10298	E	4	10560	G	17	11203			
C	5	10298	E	5	10560	G	18	11202			
C	6	10298	E	6	10560	G	19	11200			
C	7	10329	E	7	10560	G	20	11199			
C	8	10329	E	8	10560	G	21	11198			
C	9	10329	E	9	10560	G	22	11198			
C	10	10329	E	10	10560	G	23	11198			
C	11	10329	E	11	10560	G	24	11198			
C	12	10329	E	12	10560	G	25	10740			



- NOTES:**
1. NO FENCES OR OTHER STRUCTURES SHALL BE CONSTRUCTED OR PLACED WITHIN DEDICATED DRAINAGE EASEMENTS.
 2. A 15'x15' VISIBILITY EASEMENT SHALL BE AT ALL ALLEY AND STREET INTERSECTIONS.
 3. A 25'x25' VISIBILITY EASEMENT SHALL BE AT ALL STREET INTERSECTIONS.
 4. 100-YEAR FLOODPLAIN PER FIRM MAP PANEL #480543 0045 B, DATED SEPTEMBER 17, 1980.
 5. THIS PROPERTY IS ZONED AS PD-45, ORD. #98-16. PHASE 5B SHALL CONFORM TO THE S.F.-10 ZONING DISTRICT. AN ALLEY WAIVER IS REQUESTED FOR LOTS 7-11, BLOCK H.
 6. ALL ALLEY RIGHT-OF-WAY DEDICATIONS ARE 20'.
 7. THE 27' TEMP. ACCESS EASEMENT ON LOT 8, BLOCK G & LOT 10, BLOCK E WILL BE ABANDONED AND THE TEMPORARY SURFACE WILL BE REMOVED WITH EXTENSION OF GLEANER DRIVE TO AVERY DRIVE TO THE NORTH.

LOT 9, BLOCK C
5' FOR SCREENING PURPOSES
(TO BE DEDICATED TO
AND MAINT. BY THE H.O.A.)

LOFLAND FARMS
PHASE 2
CAB. E, PGS. 13 & 14

5' SCREENING ESMT.
(TO BE MAINT. BY THE H.O.A.)

LOT 12, BLOCK D
5' FOR SCREENING PURPOSES
(TO BE DEDICATED TO
AND MAINT. BY THE H.O.A.)

CONTINENTAL HOMES
VOL. 2322, PG. 0207

FUTURE
LOFLAND FARMS
PHASE 5-B

CONTINENTAL HOMES
VOL. 2322, PG. 0207

FUTURE
LOFLAND FARMS
PHASE 5-B

APPROX. LIMITS OF
100-YEAR FLOODPLAIN
PANEL #480543 0045B,
DATED SEPT. 17, 1980

PART OF 582.99 ACRES
N.L. LOFLAND
VOL. 38, PG. 540

Winkelmann & Associates, Inc.
CONSULTING CIVIL ENGINEERS - SURVEYORS

Lofland Farms SA

FINAL PLAT
LOFLAND FARMS, PHASE 5-A
83 LOTS - 30.110 ACRES

W.H. BARD SURVEY, ABSTRACT NO. 25
CITY OF ROCKWALL
ROCKWALL COUNTY, TEXAS

CONTINENTAL HOMES
621 WEST COLLEGE STREET
GRAPEVINE, TEXAS 76061

Scale: 1"=100' Date: 1-23-03
Designed By: MK
Drawn By: MK
Checked By: BJE
File: 320045A.P62.DWG
Project No.: 32004-02

E 354