



GRAPHIC SCALE



( IN FEET )  
1 inch = 200 ft.

LEGAL DESCRIPTION

BEING a tract of land situated in the N. Butler Survey, Abstract No. 21 and the J.H.B. Jones Survey, Abstract No. 124, City of Rockwall, Rockwall County, Texas, and being a part of that tract as conveyed to Pulte Homes of Texas, L.P. as recorded in Volume 1778, Page 72 of the Deed Records of Rockwall County, Texas, said tract being more particularly described by metes and bounds as follows:

BEGINNING at the northwest corner of said Pulte tract on the eastern line of The Shores, Phase III, an Addition to the City of Rockwall as recorded in Cabinet C, Slide 99 of the Plat Records of Rockwall County, Texas, and being on the southern line of a tract as conveyed to Shirley McCastill Appleby and Stephen Chamblee, Trustees, as recorded in Volume 268, Page 248 of said Deed Records;

THENCE North 89 degrees 16 minutes 02 seconds East, leaving the eastern line of The Shores, Phase III and along the common line of said Pulte tract and said Appleby tract, a distance of 528.42 feet to a point;

THENCE North 03 degrees 24 minutes 42 seconds East, continuing along the common line of said Pulte tract and said Appleby tract, a distance of 392.96 feet to a point in Squabble Creek;

THENCE along the meanders of Squabble Creek, the following:

South 87 degrees 28 minutes 23 seconds East, a distance of 185.60 feet to a point;  
North 56 degrees 10 minutes 37 seconds East, a distance of 142.00 feet to a point;  
South 79 degrees 53 minutes 23 seconds East, a distance of 114.00 feet to a point;  
South 18 degrees 35 minutes 23 seconds East, a distance of 160.00 feet to a point;  
South 66 degrees 53 minutes 23 seconds East, a distance of 231.00 feet to a point;  
South 36 degrees 06 minutes 23 seconds East, a distance of 95.50 feet to a point;  
North 89 degrees 06 minutes 37 seconds East, a distance of 130.00 feet to a point;  
South 70 degrees 08 minutes 23 seconds East, a distance of 175.00 feet to a point;  
South 10 degrees 46 minutes 23 seconds East, a distance of 171.00 feet to a point;  
South 70 degrees 44 minutes 23 seconds East, a distance of 107.50 feet to a point;  
South 35 degrees 31 minutes 23 seconds East, a distance of 188.00 feet to a point;  
South 83 degrees 17 minutes 23 seconds East, a distance of 136.00 feet to a point;  
North 54 degrees 58 minutes 06 seconds East, a distance of 122.35 feet to a point on the western line of a tract as conveyed to William T. Collins as recorded in Volume 194, Page 455 of said Deed Records;

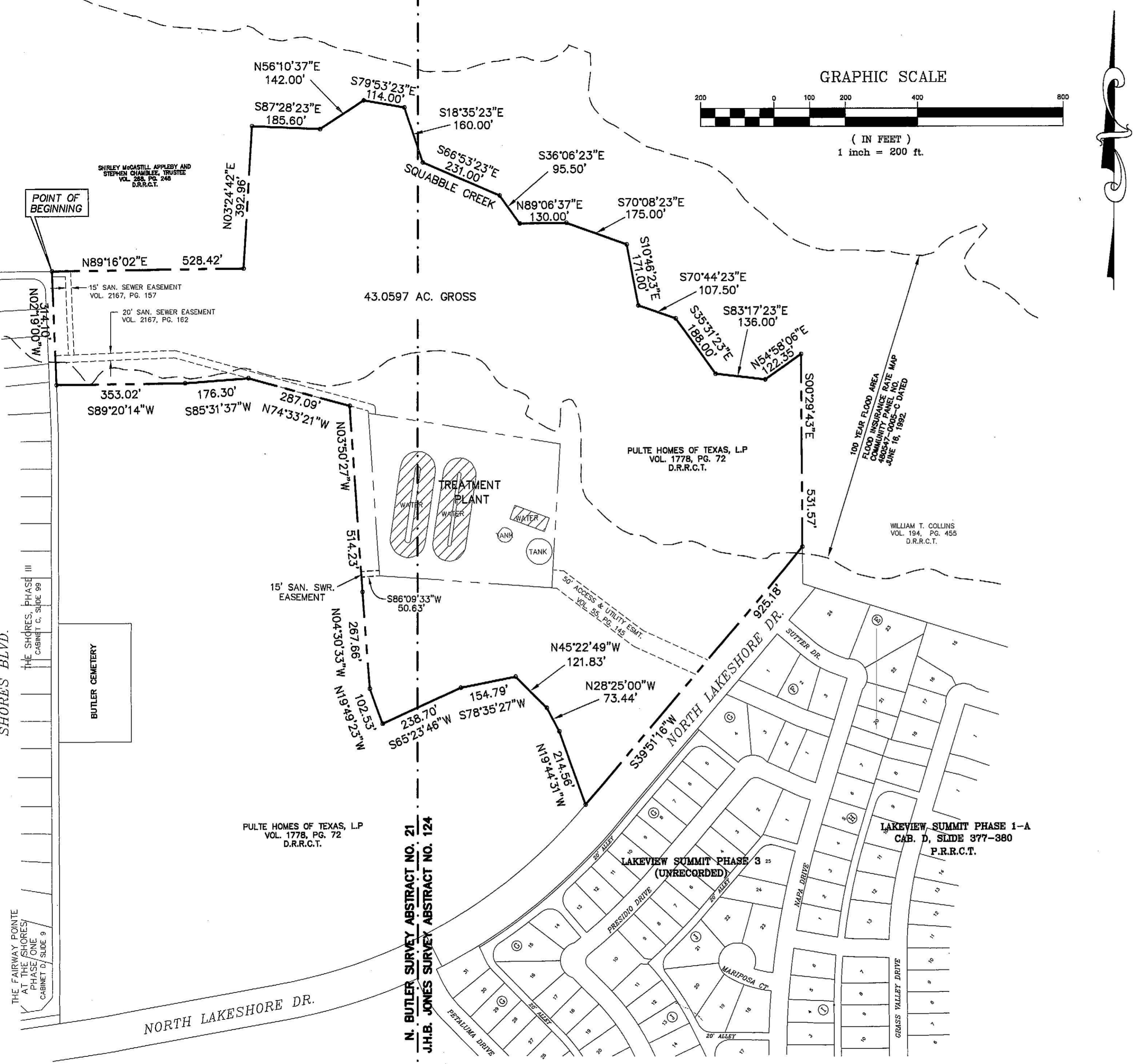
THENCE South 00 degrees 29 minutes 43 seconds East, along the common line of said Pulte tract and said Collins tract, a distance of 531.57 feet to a point on the existing northwest right of way line of N. Lakeshore Drive;

THENCE South 39 degrees 51 minutes 16 seconds West, along the existing northwest right of way line of N. Lakeshore Drive, a distance of 925.18 feet to a point;

THENCE leaving the existing northwest right of way line of N. Lakeshore Drive and over and across said Pulte tract, the following:

North 19 degrees 44 minutes 31 seconds West, a distance of 214.56 feet to a point;  
North 28 degrees 22 minutes 00 seconds West, a distance of 73.44 feet to a point;  
North 45 degrees 25 minutes 49 seconds West, a distance of 121.83 feet to a point;  
South 78 degrees 35 minutes 27 seconds West, a distance of 154.79 feet to a point;  
South 65 degrees 23 minutes 46 seconds West, a distance of 238.70 feet to a point;  
North 19 degrees 49 minutes 23 seconds West, a distance of 102.53 feet to a point;  
North 04 degrees 30 minutes 33 seconds West, a distance of 267.66 feet to a point;  
North 03 degrees 50 minutes 27 seconds West, a distance of 514.23 feet to a point;  
North 74 degrees 33 minutes 21 seconds West, a distance of 287.09 feet to a point;  
South 85 degrees 31 minutes 37 seconds West, a distance of 176.30 feet to a point;  
South 89 degrees 20 minutes 14 seconds West, a distance of 353.02 feet to a point on the common line of said Pulte tract and said The Shores, Phase III;

THENCE North 02 degrees 19 minutes 00 seconds West, along the common line of said Pulte tract and said The Shores, Phase III, a distance of 314.10 feet to the POINT OF BEGINNING and containing 43.0597 acres of land, more or less.



FINAL PLAT

LAKEVIEW SUMMIT, PHASE 3  
PARKLAND DEDICATION  
N. BUTLER SURVEY, ABSTRACT NO. 29  
J.H.B. JONES SURVEY, ABSTRACT NO. 124  
CITY OF ROCKWALL  
ROCKWALL COUNTY, TEXAS

OWNER/DEVELOPER  
PULTE HOMES OF TEXAS, L.P.  
1234 LAKESHORE DRIVE, STE 760A  
COPPELL, TEXAS 75088  
(972) 304-2800

ENGINEER/SURVEYOR  
DOUPHRATE & ASSOCIATES, INC.  
2235 RIDGE ROAD, STE 200  
ROCKWALL, TEXAS 75087  
(972) 771-8004

PROJECT: 9919-3FPLT3  
DATE: 4/05  
SCALE: 1"=200'  
DRAWN: D.L.B.  
CHK'D: W.L.D.

DOUPHRATE & ASSOCIATES, INC.  
ENGINEERING • PROJECT MANAGEMENT • SURVEYING  
P.O. BOX 1336 ROCKWALL, TEXAS 75087  
PHONE: (972)771-9004 FAX: (972)771-9005