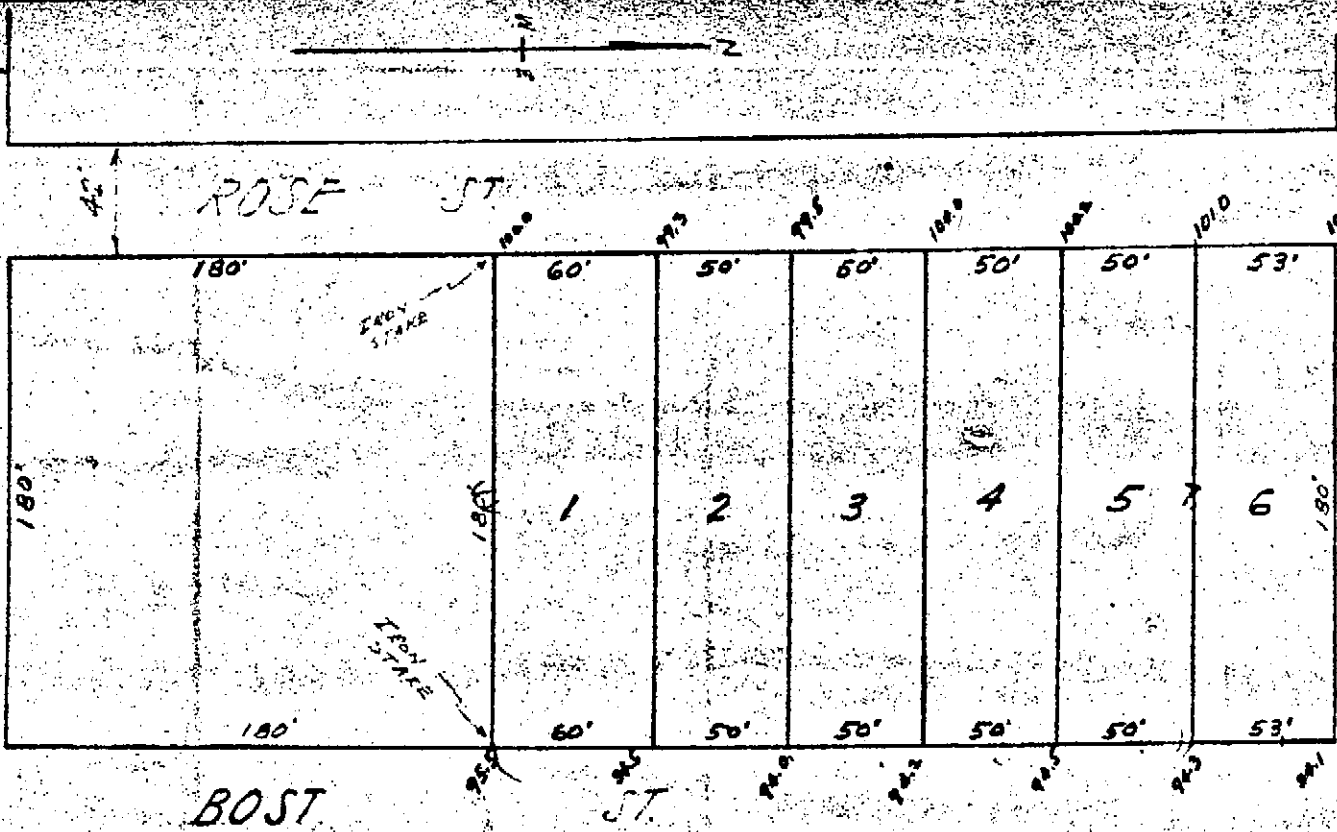


BOYDSTUN AVE

ROSE ST

ST. MARYS

BOST ST



I, the undersigned, Mayor of the City of Rockwall, Texas, do hereby certify that the herewith annexed plat has been duly approved by the governing body of the City of Rockwall, this the 12th day of April, 1954.

*[Signature]*  
Mayor

SURVEY PLAT SHOWING

A SUBDIVISION OF 1.3 ACRES OF LAND SITUATED IN THE BOYDSTUN SURVEY AB-14, CITY OF ROCKWALL BY ROCKWALL COUNTY, TEXAS. SAID SUBDIVISION CONSISTS OF SIX LOTS 1 TO 6 INCL AS SHOWN.



FEB 26, 1954  
ALEXANDRA SUPERVISOR

SCALE 1" = 40 FEET

Vol. 50 - Page 144

Filed for recording on 2/26/54  
Approved by 2/26/54  
Alexandra Supervisor  
Rockwall County, Texas

3611, DALLAS