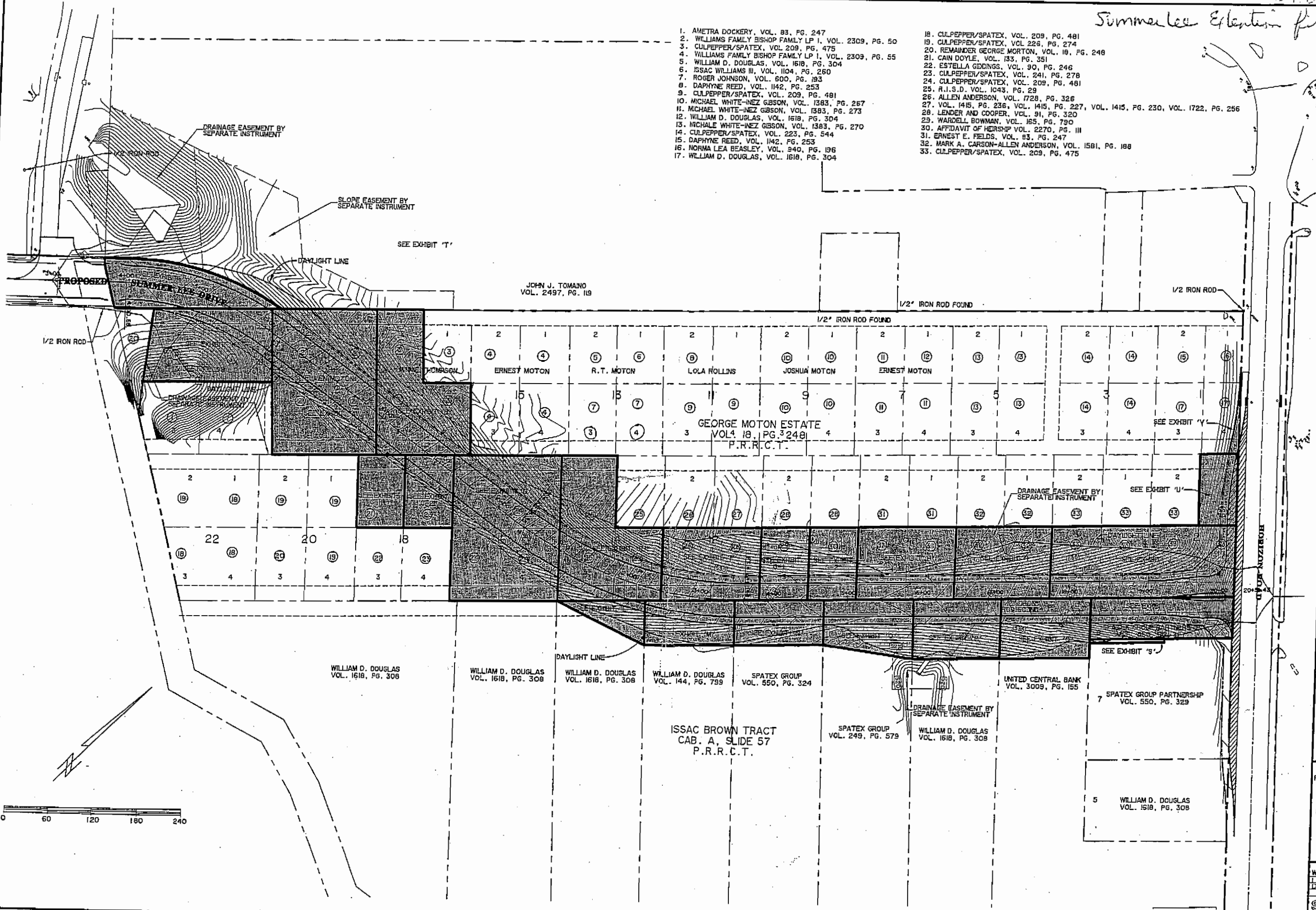


1. AMETRA DOCKERY, VOL. 83, PG. 247
2. WILLIAMS FAMILY BISHOP FAMILY LP I, VOL. 2309, PG. 50
3. CULPEPPER/SPATEX, VOL. 209, PG. 475
4. WILLIAMS FAMILY BISHOP FAMILY LP I, VOL. 2309, PG. 55
5. WILLIAM D. DOUGLAS, VOL. 1618, PG. 304
6. ISSAC WILLIAMS III, VOL. 1104, PG. 260
7. ROGER JOHNSON, VOL. 600, PG. 193
8. DAPHNE REED, VOL. 1142, PG. 253
9. CULPEPPER/SPATEX, VOL. 209, PG. 481
10. MICHAEL WHITE-INEZ GIBSON, VOL. 1383, PG. 267
11. MICHAEL WHITE-INEZ GIBSON, VOL. 1383, PG. 273
12. WILLIAM D. DOUGLAS, VOL. 1618, PG. 304
13. MICHAEL WHITE-INEZ GIBSON, VOL. 1383, PG. 270
14. CULPEPPER/SPATEX, VOL. 223, PG. 544
15. DAPHNE REED, VOL. 1142, PG. 253
16. NORMA LEA BEASLEY, VOL. 340, PG. 196
17. WILLIAM D. DOUGLAS, VOL. 1618, PG. 304

18. CULPEPPER/SPATEX, VOL. 209, PG. 481
19. CULPEPPER/SPATEX, VOL. 226, PG. 274
20. REMAINDER GEORGE MORTON, VOL. 19, PG. 248
21. CAIN DOYLE, VOL. 133, PG. 351
22. ESTELLA GIDDINGS, VOL. 90, PG. 246
23. CULPEPPER/SPATEX, VOL. 241, PG. 278
24. CULPEPPER/SPATEX, VOL. 209, PG. 481
25. R.I.S.D. VOL. 1043, PG. 29
26. ALLEN ANDERSON, VOL. 1728, PG. 326
27. VOL. 1415, PG. 235, VOL. 1415, PG. 227, VOL. 1415, PG. 230, VOL. 1722, PG. 256
28. LENDER AND COOPER, VOL. 91, PG. 320
29. WARDELL BOHMAN, VOL. 165, PG. 790
30. AFFIDAVIT OF HEIRSHIP VOL. 2270, PG. III
31. ERNEST E. FIELDS, VOL. 83, PG. 247
32. MARK A. CARSON-ALLEN ANDERSON, VOL. 1581, PG. 188
33. CULPEPPER/SPATEX, VOL. 209, PG. 475



JOHN J. TOMANO
VOL. 2497, PG. 19

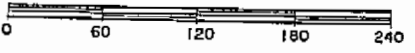
GEORGE MOTON ESTATE
VOL. 18, PG. 248
P.R.R.C.T.

ISSAC BROWN TRACT
CAB. A, SLIDE 57
P.R.R.C.T.

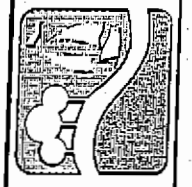
UNITED CENTRAL BANK
VOL. 3009, PG. 155

SPATEX GROUP PARTNERSHIP
VOL. 550, PG. 329

WILLIAM D. DOUGLAS
VOL. 1618, PG. 308



PREPARED BY:
VIA WIER & ASSOCIATES, INC.
 ENGINEERS SURVEYORS & LAND PLANNERS
 4300 BELTWAY PLAZA SUITE 130 ARLINGTON, TEXAS 76010 METRO (817)167-7700
 1330 U.S. HIGHWAY 287 N. SUITE 101 WAREFIELD, TEXAS 76863 METRO (817)177-8700
 6721 5th STREET FRODO, TEXAS 75044 METRO (214)347-8800
 www.via-wier.com



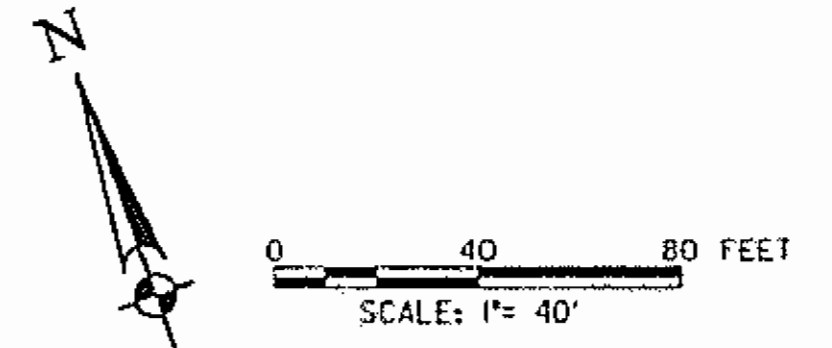
ROCKWALL

OVERALL MAP OWNERSHIP MAP AND EXHIBIT KEY

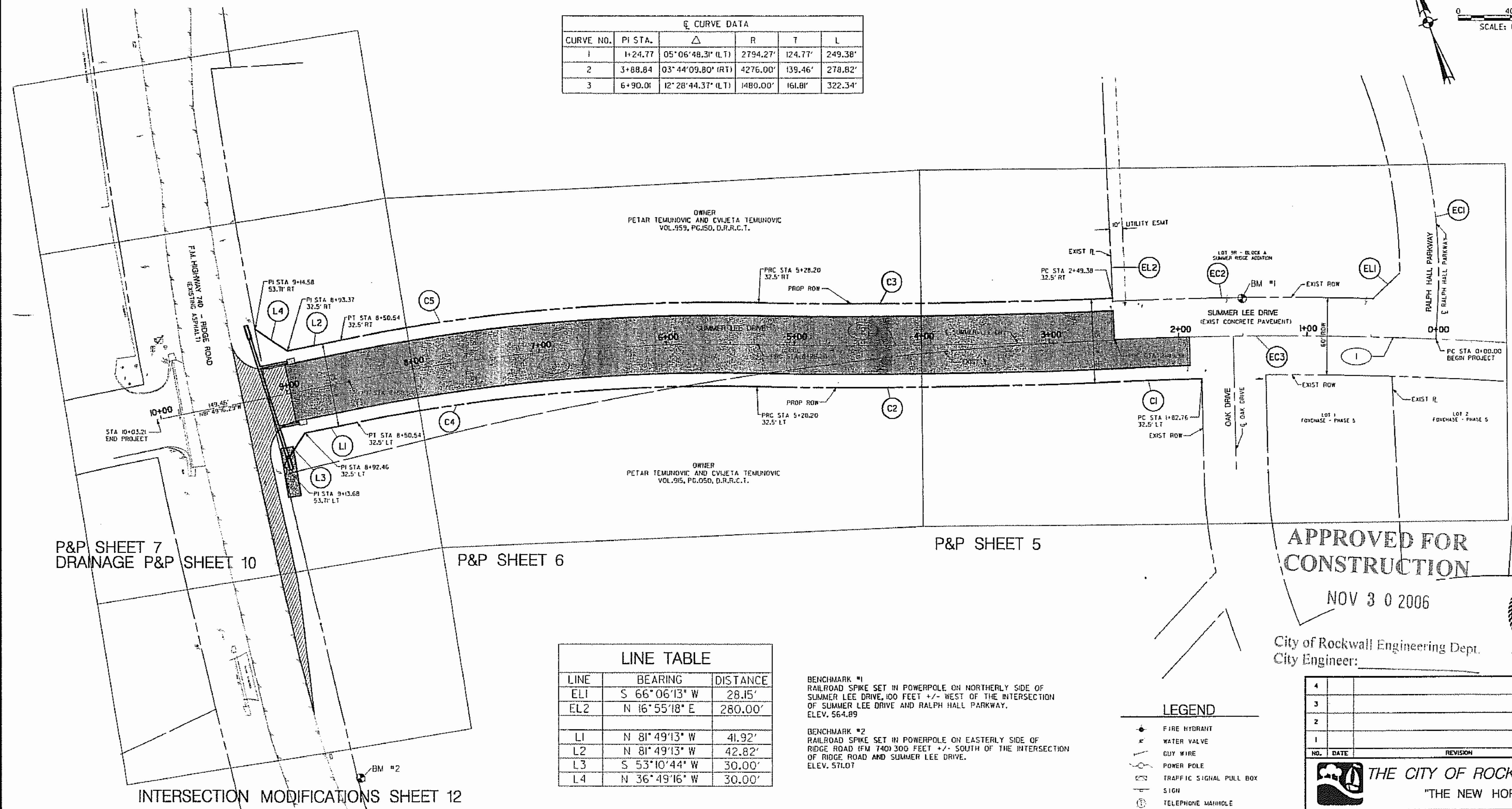
PRELIMINARY PLANS FOR PROJECT REVIEW. NOT FOR CONSTRUCTION, BIDDING OR PERMIT PURPOSES.
 Prepared By/Or Under Direct Supervision Of Ronald Ramirez, PE
 Texas Registration No. 81821 On Date Shown Below.

COPYRIGHT © WIER & ASSOCIATES, INC.
 LAST SHEET DATED
 DATE 10-15-2004
 WAH 03049

SHEET NO. P101



C CURVE DATA					
CURVE NO.	PI STA.	Δ	R	T	L
1	1+24.77	05°06'48.31" (L.T)	2794.27'	124.77'	249.38'
2	3+88.84	03°44'09.80" (RT)	4276.00'	139.46'	278.82'
3	6+90.06	12°28'44.37" (L.T)	1480.00'	161.81'	322.34'



P&P SHEET 7
DRAINAGE P&P SHEET 10

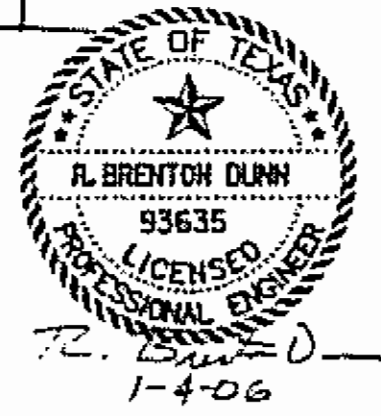
P&P SHEET 6

P&P SHEET 5

**APPROVED FOR
CONSTRUCTION**

NOV 3 0 2006

City of Rockwall Engineering Dept.
City Engineer: _____



LINE TABLE		
LINE	BEARING	DISTANCE
EL1	S 66°06'13" W	28.15'
EL2	N 16°55'18" E	280.00'
L1	N 81°49'13" W	41.92'
L2	N 81°49'13" W	42.82'
L3	S 53°10'44" W	30.00'
L4	N 36°49'16" W	30.00'

BENCHMARK #1
RAILROAD SPIKE SET IN POWERPOLE ON NORTHERLY SIDE OF
SUMMER LEE DRIVE, 100 FEET +/- WEST OF THE INTERSECTION
OF SUMMER LEE DRIVE AND RALPH HALL PARKWAY.
ELEV. 564.89

BENCHMARK #2
RAILROAD SPIKE SET IN POWERPOLE ON EASTERLY SIDE OF
RIDGE ROAD (FM 740) 300 FEET +/- SOUTH OF THE INTERSECTION
OF RIDGE ROAD AND SUMMER LEE DRIVE.
ELEV. 571.07

- LEGEND**
- FIRE HYDRANT
 - WATER VALVE
 - GUY WIRE
 - POWER POLE
 - TRAFFIC SIGNAL PULL BOX
 - SIGN
 - TELEPHONE MANHOLE
 - TELEPHONE PEDIESTAL
 - MONUMENT
 - IRON ROD
 - IRON PIPE
 - SURVEY CONTROL POINT
 - WATER METER MANHOLE
 - ASPHALT
 - (SIZE) WATERLINE
 - (SIZE) NATURAL GAS LINE
 - UNDERGROUND TELEPHONE
 - OVERHEAD ELECTRIC
 - EXIST CONCRETE
 - PROPOSED ASPHALT
 - PROPOSED CONCRETE

CURVE TABLE					
CURVE	DELTA	RADIUS	LENGTH	CHORD BEARING	CHORD
EC1	29°46'32"	450.00'	233.86'	S 07°18'35" W	231.24'
EC2	04°06'03"	2824.18'	202.14'	N 70°53'03" W	202.10'
EC3	16°24'41"	2794.18'	805.52'	N 64°40'34" W	802.73'
C1	01°22'09"	2761.77'	65.99'	N 72°23'34" W	65.99'
C2	03°44'10"	4308.50'	280.95'	N 71°12'33" W	280.90'
C3	03°44'10"	4243.50'	276.70'	N 71°12'33" W	276.65'
C4	12°28'45"	1447.50'	315.27'	N 75°34'50" W	314.65'
C5	12°28'45"	1512.50'	329.43'	N 75°34'50" W	328.78'

INTERSECTION MODIFICATIONS SHEET 12

NO.	DATE	REVISION	APPROV.
4			
3			
2			
1			



SUMMER LEE DRIVE EXTENSION

PROJECT AND RIGHT OF WAY
LAYOUT

TCB | AECOM TURNER COLLIE & BRADEN
17300 DALLAS PARKWAY, SUITE 1010
DALLAS, TEXAS 75248-1157
WWW.TCB.AECOM.COM

Units: A/E/S	Scale: P=40'	Date: JAN-04-2006
Designed: RBO	Checked: BH	Project No. 60002695.02000
Drawn: DJJ	Approved: RCR	Sheet 3 of 14