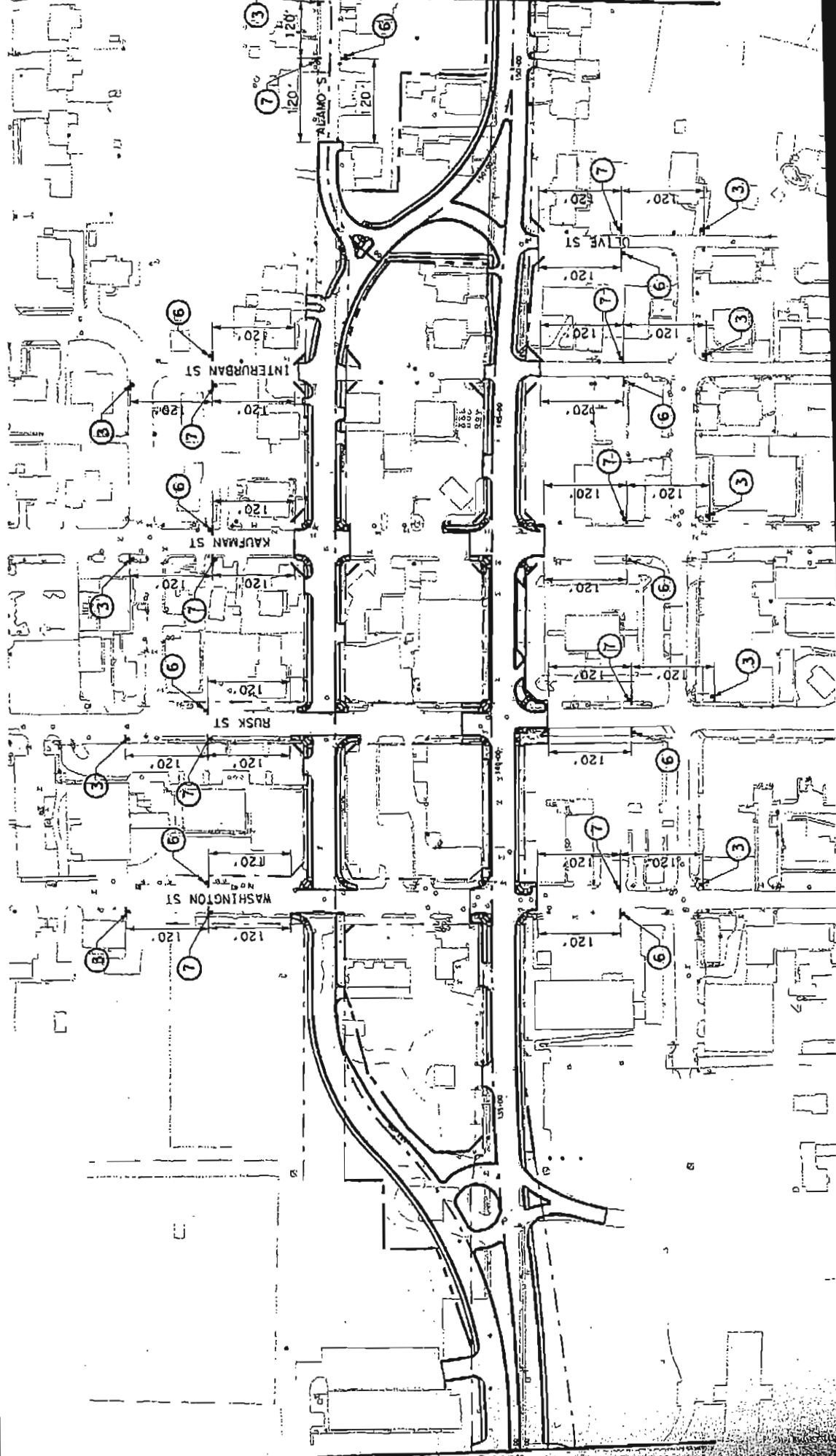


MATCH LINE STA 151+00

MATCH LINE STA 130+00



DALLAS DISTRICT  
Design Schematic  
William L. Hale, P.E.

District Engineer

SH 205  
(GOLIAD STREET)  
From: SH 276

TO: NORTH OF SH 66

CSJ: 0451-01-032

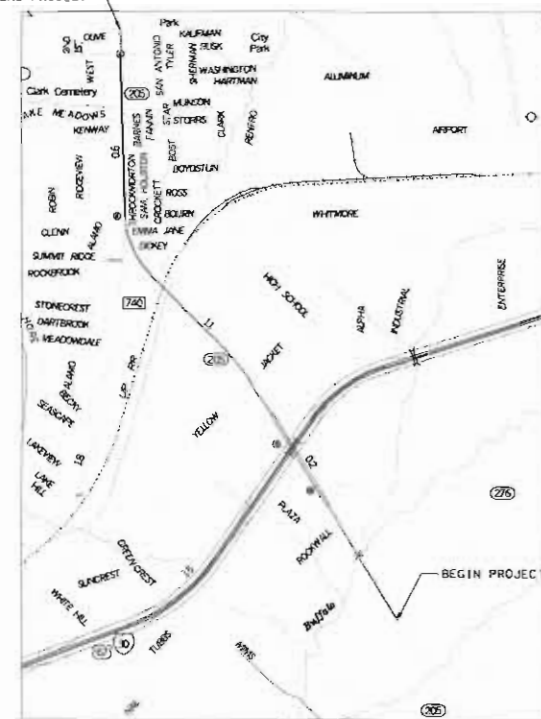
STA. 10+00 TO STA. 36+00

Rockwall County

Functional Class:

Design Speed: 30 MPH

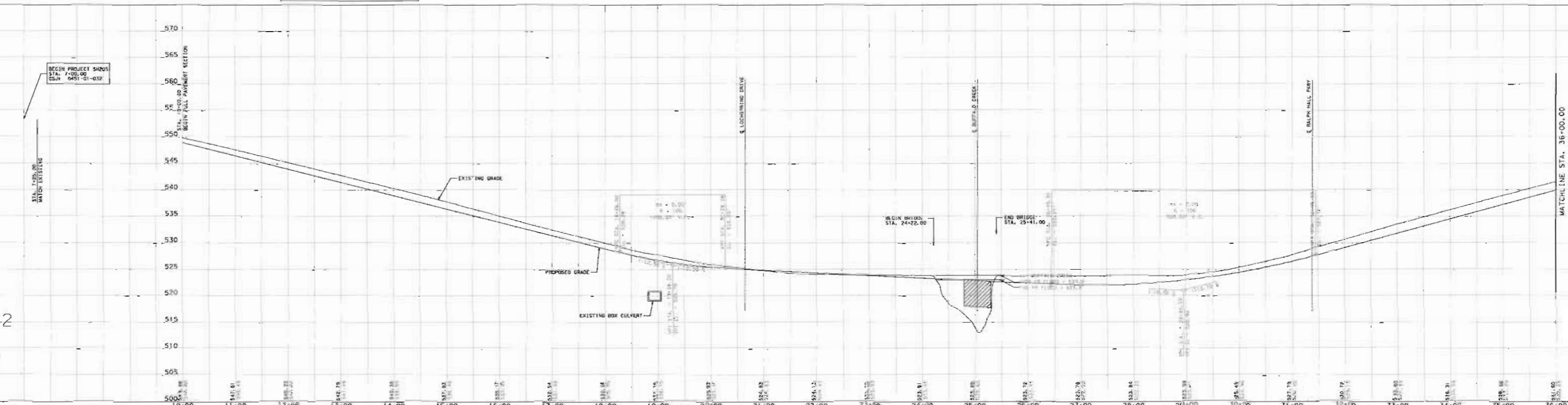
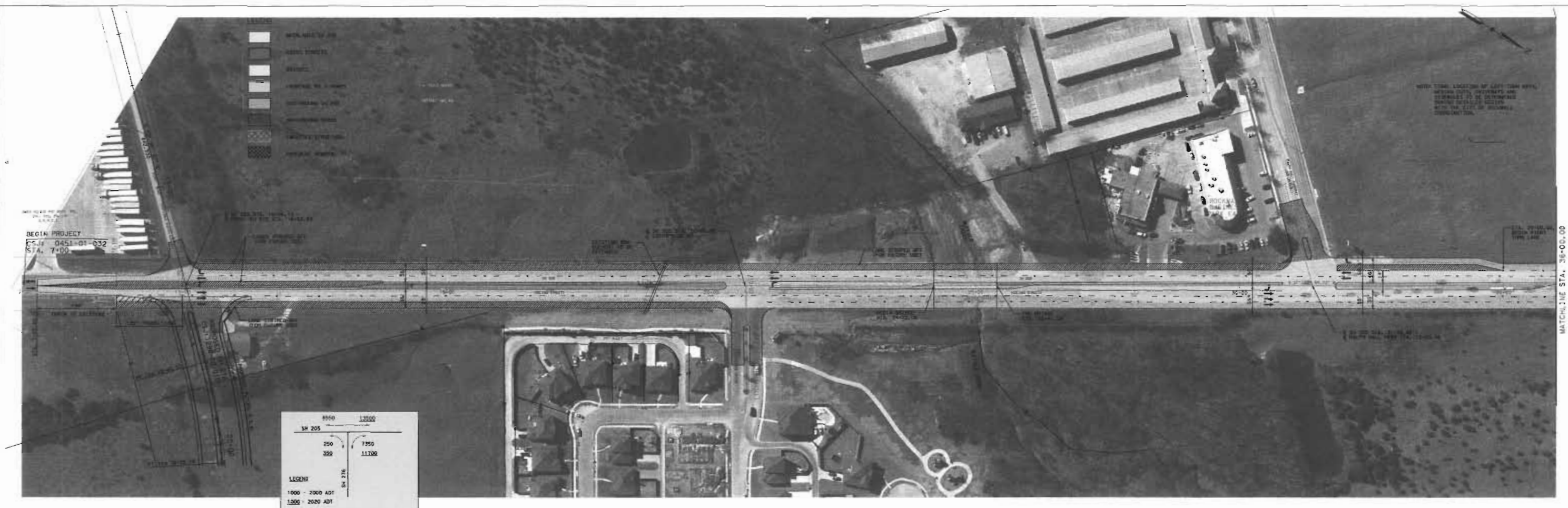
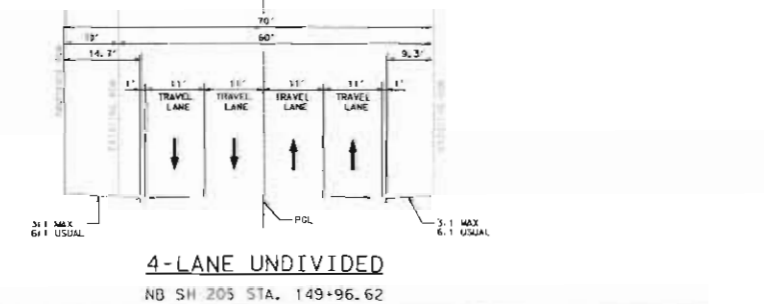
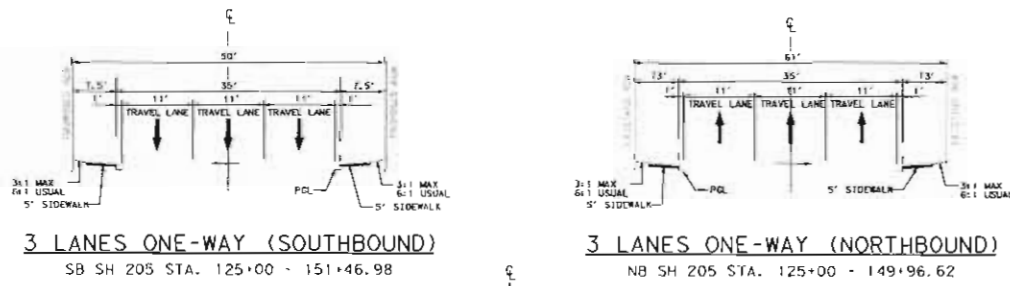
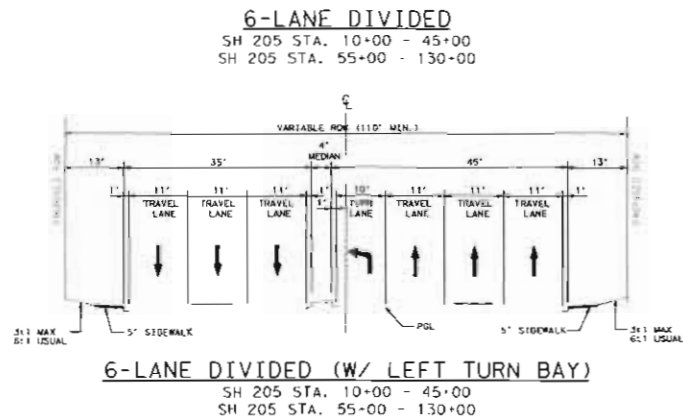
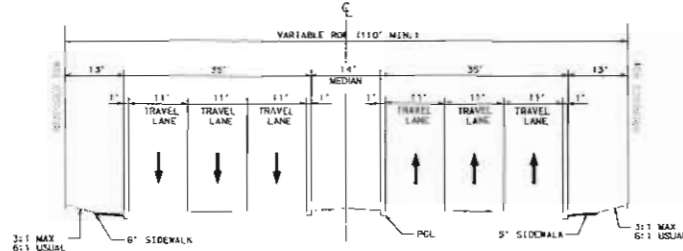
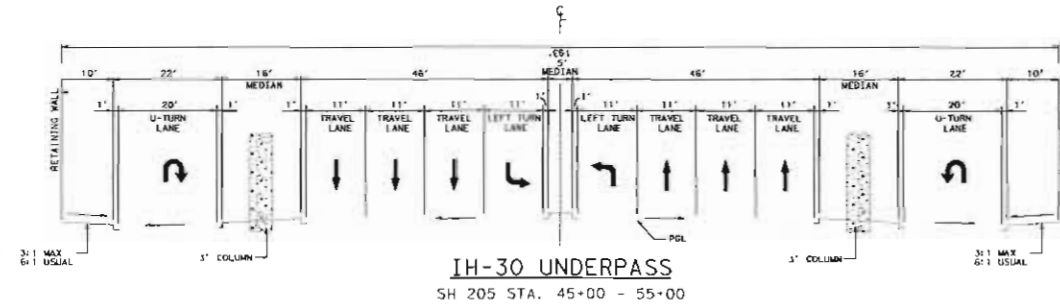
Project Length: 2.784 Miles



Roll 1 of 6

Preliminary  
Not for Bidding or  
Construction Purposes  
SCHEMATIC PREPARED BY:  
KEVIN W. SHEPHERD, P.E.  
PROJECT NUMBER:  
04-15-05  
DATE

PROPOSED TYPICAL SECTIONS  
N01 TO SCALE



DALLAS DISTRICT  
Design Schematic  
William L. Hale, P.E.

District Engineer

SH 205  
(GOLIAD STREET)  
From: SH 276

TO: NORTH OF SH 66

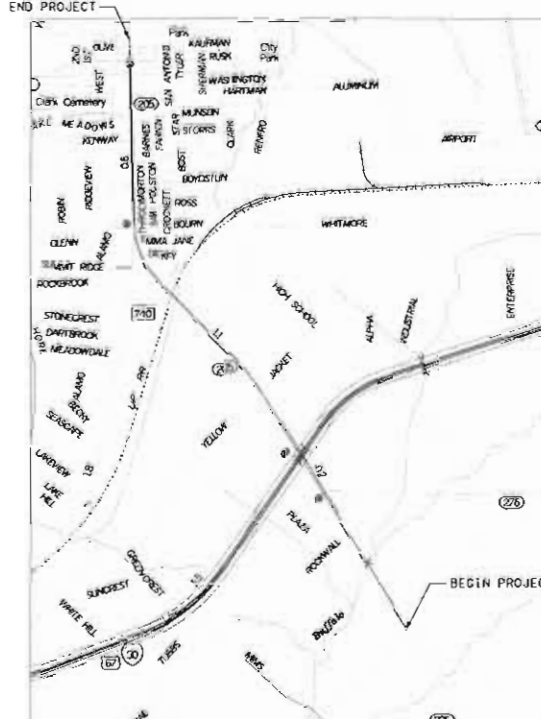
CSJ: 0451-01-032

Roll 1 of 6

Rockwall County

Design Speed: 30 MPH

Project Length: 2.784 Miles



Scale: Horizontal 1:100  
Vertical 1:10

© 2005 by Texas Department of Transportation  
all rights reserved

DALLAS DISTRICT  
 Design Schematic  
 William L. Hale, P.E.  
 District Engineer  
 SH 205  
 (GOLIAD STREET)  
 From: SH 276  
 TO: NORTH OF SH 66  
 CSJ: 0451-01-032

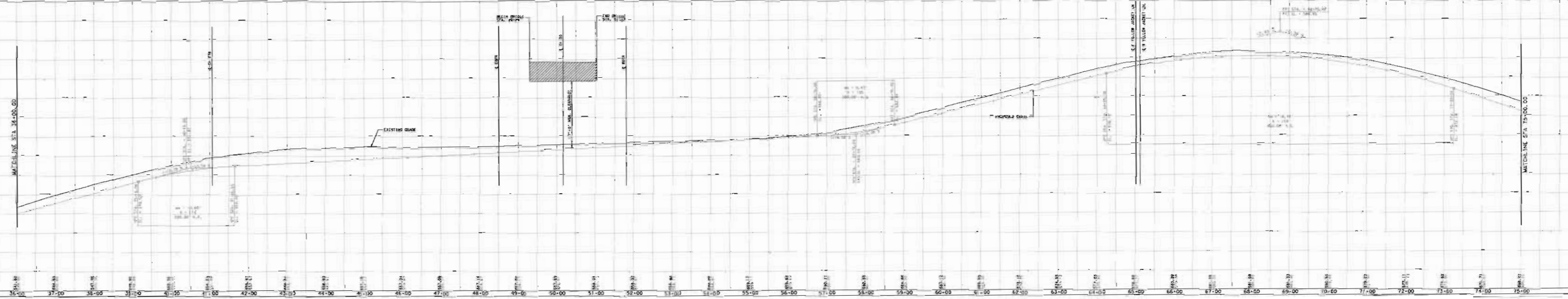
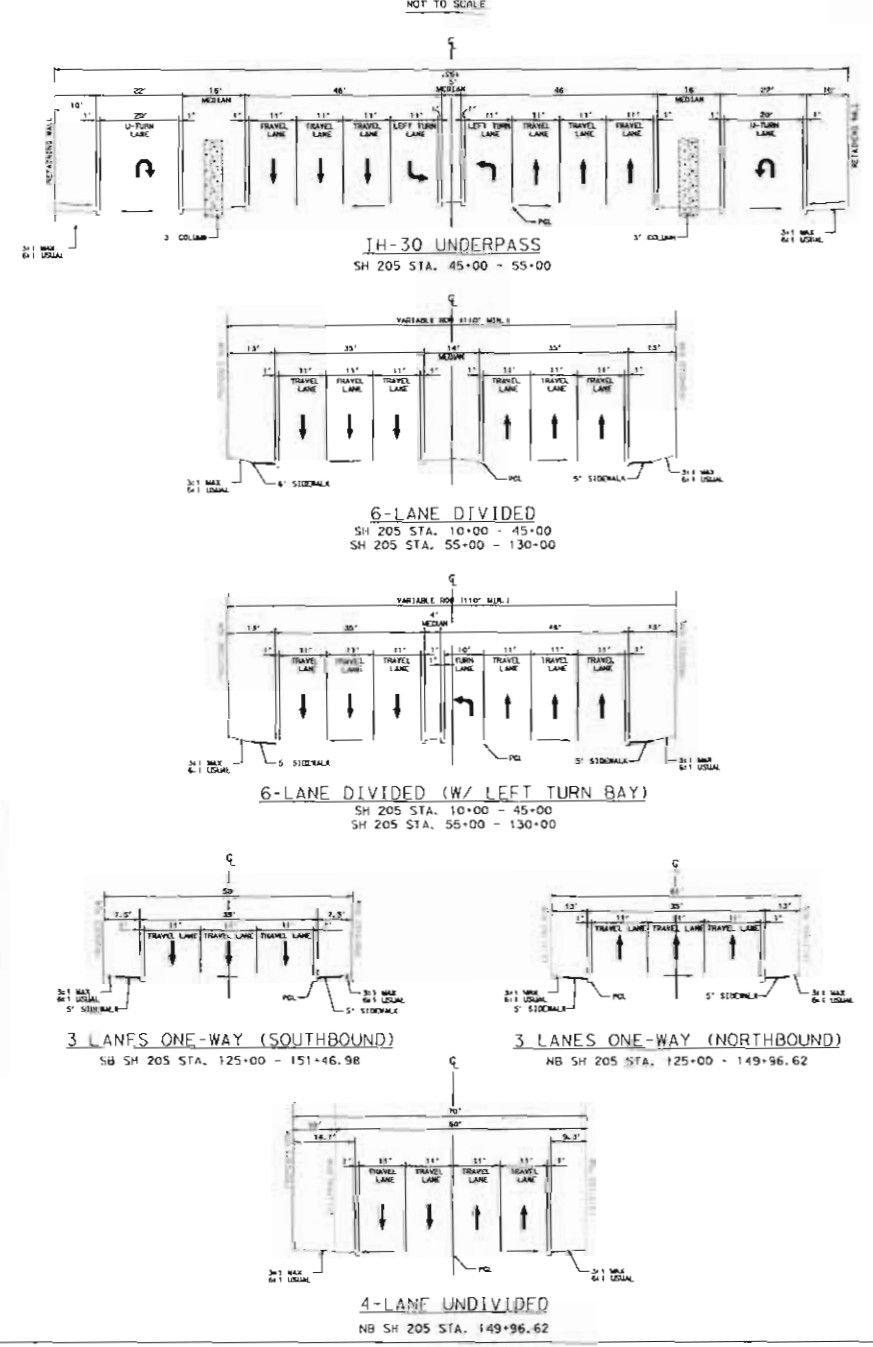
Roll 2 of 6  
 Rockwall County  
 STA. 36+00 TO STA. 75+00  
 Design Speed: 30 MPH  
 Project Length: 2.784 Miles



Roll 2 of 6

Prepared by:  
 Not for bidding or  
 construction purposes  
 SCHEMATIC PREPARED BY:  
 KEVIN W. SHEPHERD, P.E.  
 PROJECT NUMBER:  
 88642  
 DATE:  
 04-15-05

PROPOSED TYPICAL SECTIONS  
 NOT TO SCALE

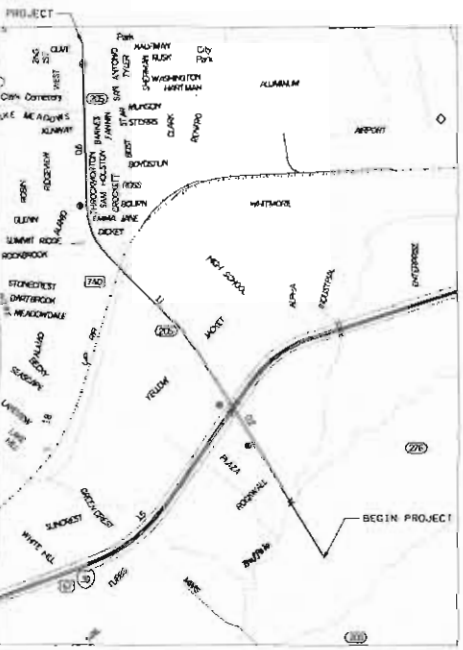


DALLAS DISTRICT  
 Design Schematic  
 William L. Hale, P.E.  
 District Engineer  
 SH 205  
 (GOLIAD STREET)  
 From: SH 276  
 TO: NORTH OF SH 66  
 CSJ: 0451-01-032

Roll 2 of 6  
 Rockwall County  
 STA. 36+00 TO STA. 75+00  
 Design Speed: 30 MPH  
 Project Length: 2.784 Miles



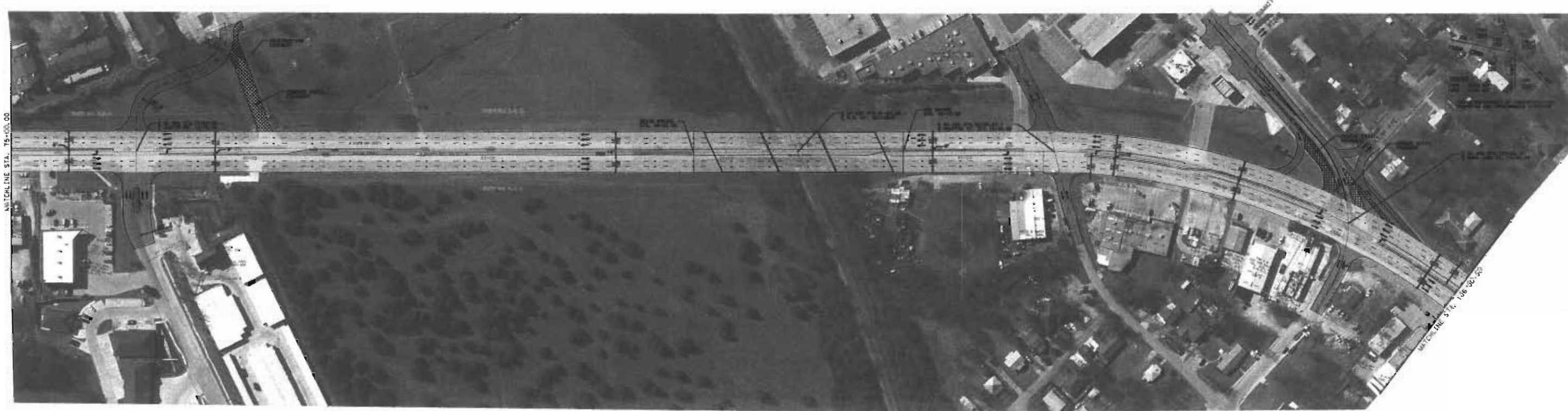
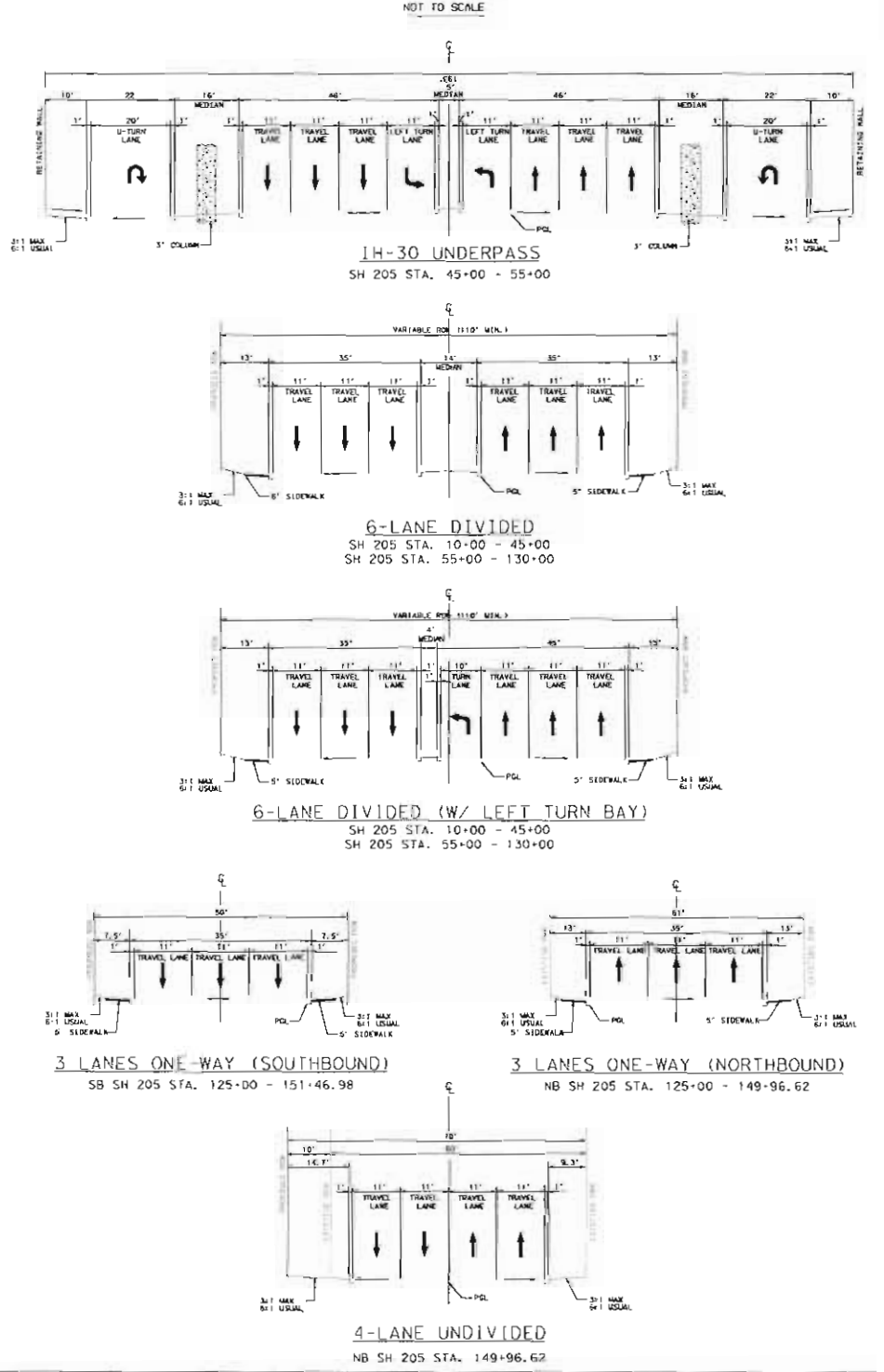
DALLAS DISTRICT  
 Design Schematic  
 William L. Hale, P.E.  
 District Engineer  
 SH 205  
 (GOLIAD STREET)  
 From: SH 276  
 TO: NORTH OF SH 66  
 CSJ: 0451-01-032



Roll 3 of 6

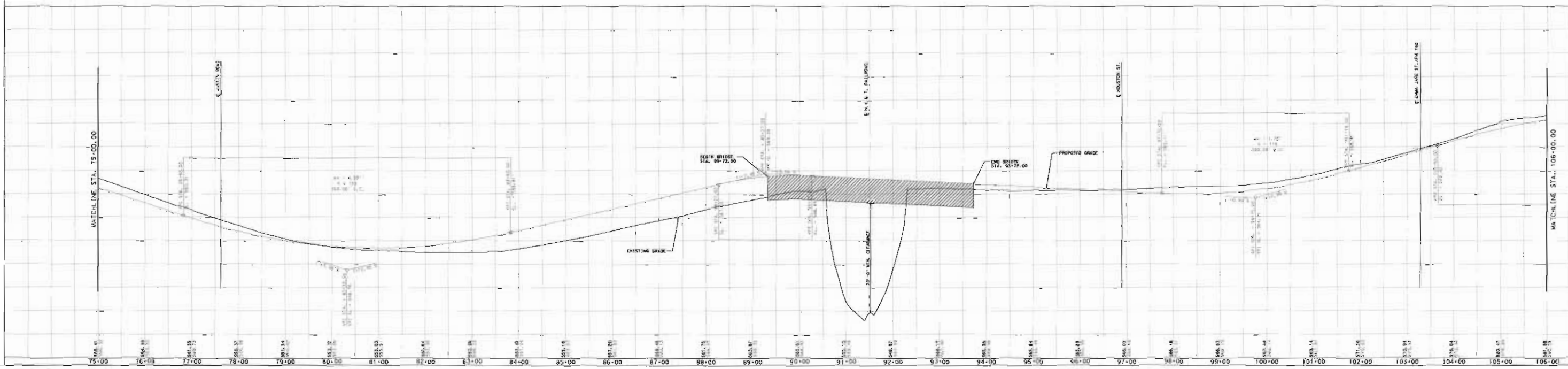
Prepared by:  
 Not for Bidding or  
 Construction Purposes  
 SCHEMATIC PREPARED BY:  
 KEVIN M. SIEPHERD, P.E.  
 PROJECT MANAGER  
 DATE: 04-19-05

PROPOSED TYPICAL SECTIONS  
 NOT TO SCALE



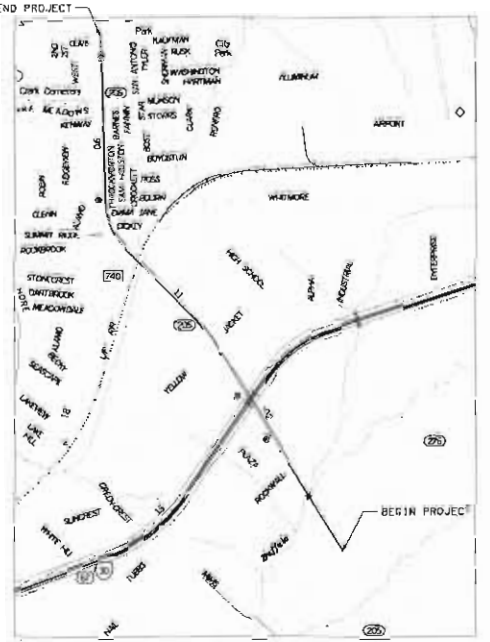
NOTE: FINAL LOCATION OF ALL UTILITIES, MEDIAN STRIPS, SIDEWALKS TO BE DETERMINED BY THE CITY OF DALLAS WITH THE CITY OF ROCKWALL COORDINATION.

- LEGEND
- MEDIAN STRIP
  - CROSS STREETS
  - INTERSECTING
  - ROADWAY TO BE IMPACTED
  - SOUTHBOUND SH 205
  - NORTHBOUND SH 205
  - IMPACTED STRUCTURE
  - PAVEMENT REMOVAL



DALLAS DISTRICT  
 Design Schematic  
 William L. Hale, P.E.  
 District Engineer  
 SH 205  
 (GOLIAD STREET)  
 From: SH 276  
 TO: NORTH OF SH 66  
 CSJ: 0451-01-032

Roll 3 of 6  
 Rockwall County  
 STA. 75+00 TO STA. 106+00  
 Design Speed: 30 MPH  
 Project Length: 2.784 Miles



DALLAS DISTRICT  
Design Schematic

William L. Hale, P.E.

District Engineer

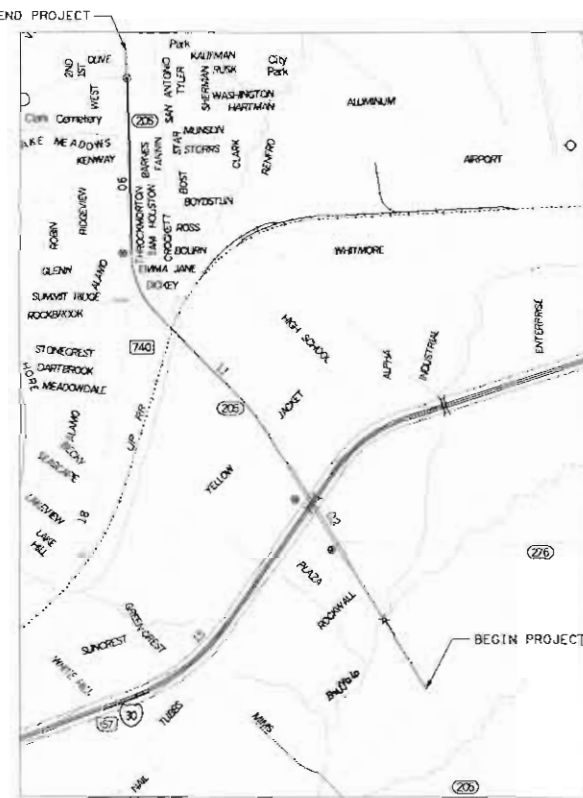
SH 205  
(GOLIAD STREET)

From: SH 276

TO: NORTH OF SH 66

CSJ: 0451-01-032

Roll 4 of 6  
Rockwall County  
STA. 106+00 TO STA. 125+00  
Design Speed: 30 MPH  
Project Length: 2.784 Miles

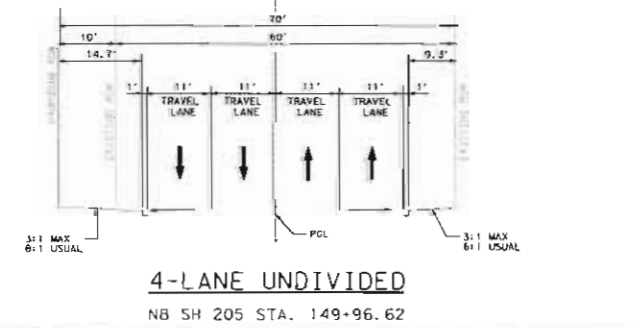
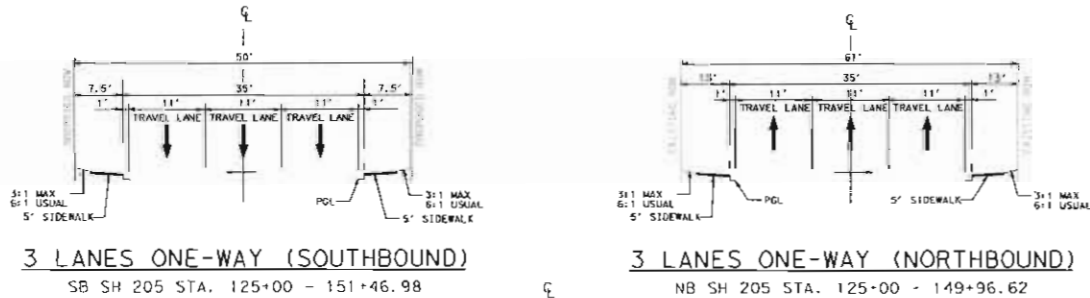
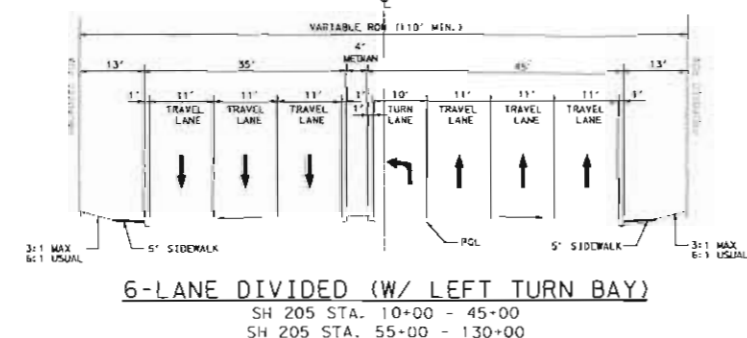
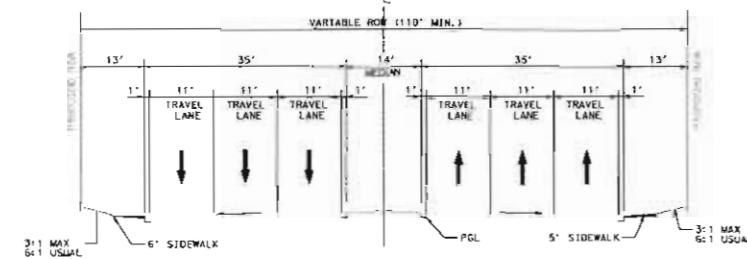
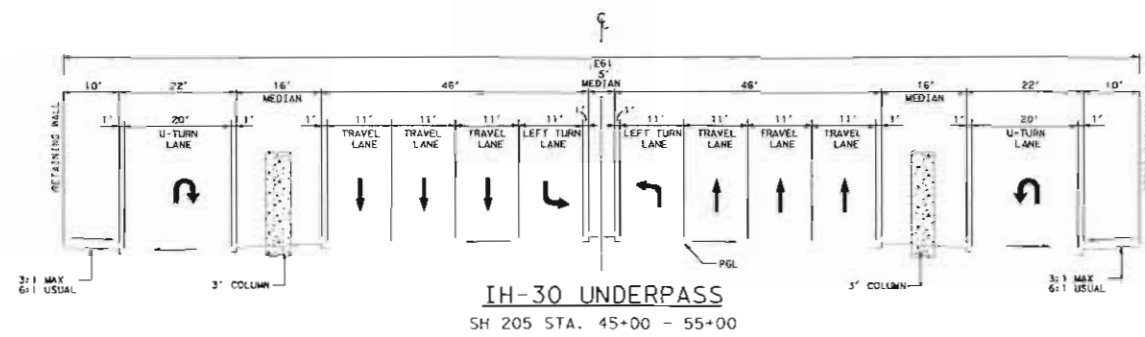


Roll 4 of 6

Preliminary  
Not For Bidding or  
Construction Purposes  
SCHEMATIC PREPARED BY:  
KEVIN M. SHEPHERD, P.E.  
PROJECT NUMBER:  
88642 DATE:  
04-15-05  
P.L. NAME:

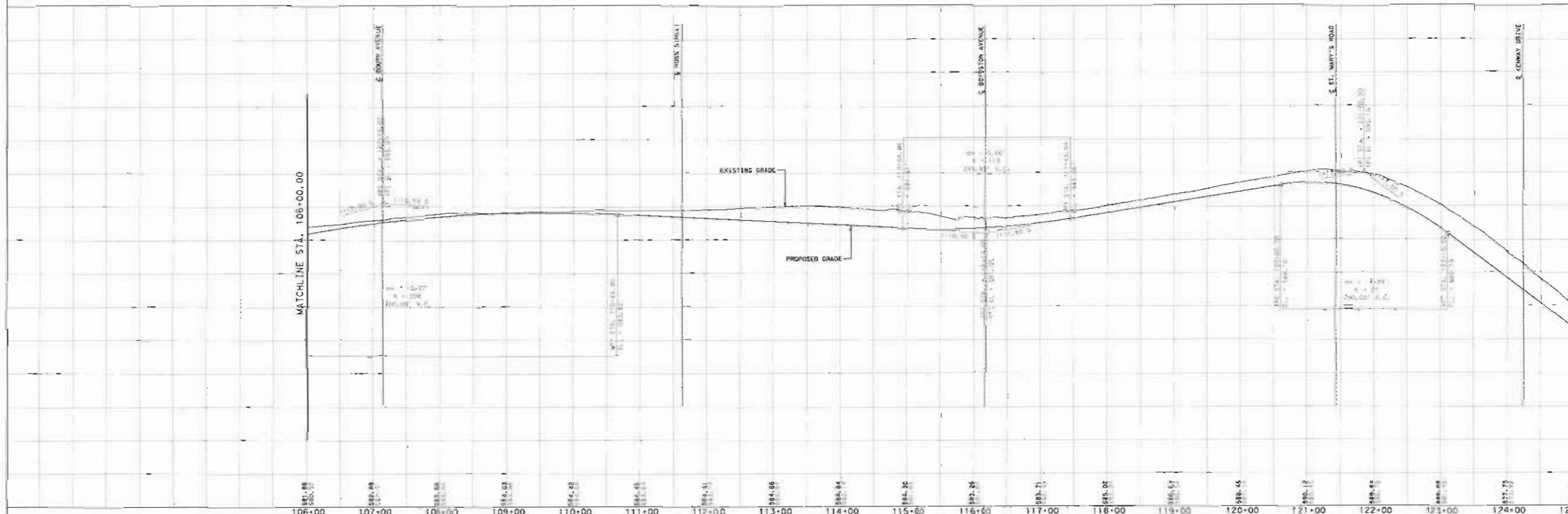
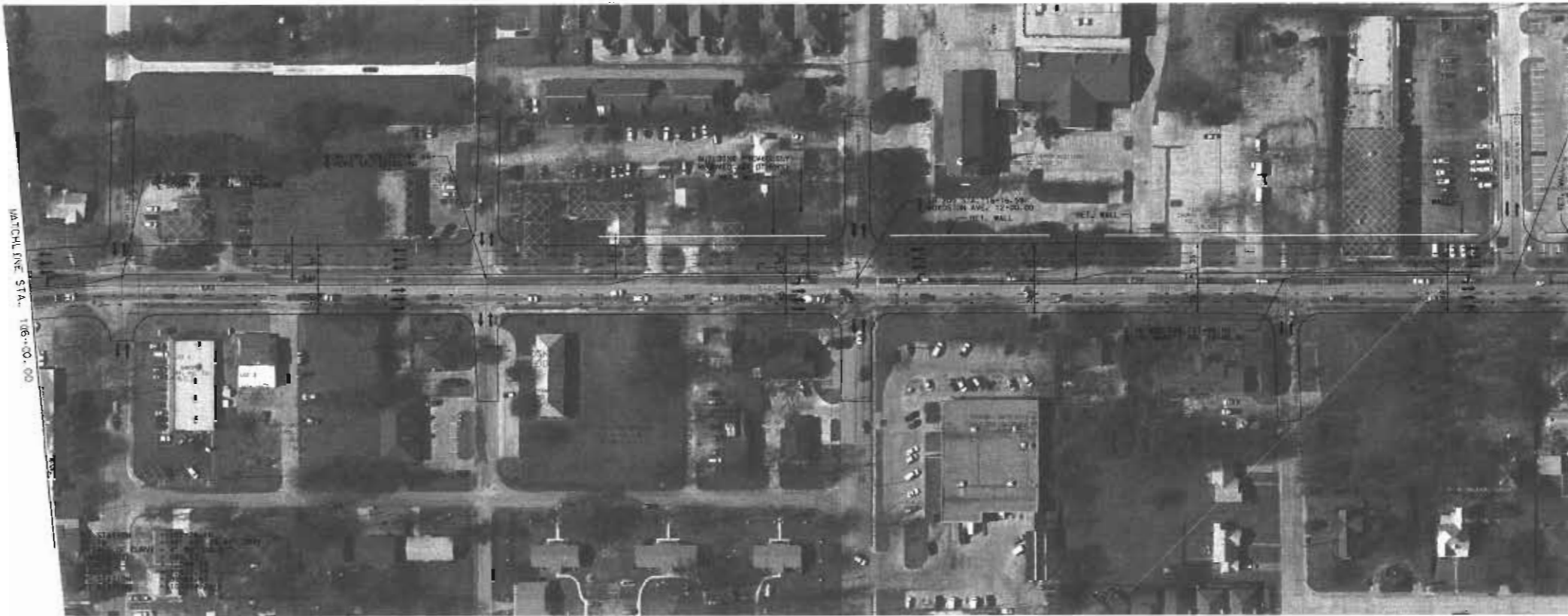
PROPOSED TYPICAL SECTIONS

NOT TO SCALE



NOTE: FINAL LOCATION OF LEFT-TURN BAYS, MEDIAN CURBS, DRIVEWAYS AND SIDEWALKS TO BE DETERMINED DURING DETAILED DESIGN WITH THE CITY OF ROCKWALL COORDINATION.

- LEGEND
- MAKELANES SH 205
  - CROSS STREETS
  - BRIDGES
  - FRONTAGE RD / RAMP
  - SOUTHBOUND SH 205
  - NORTHBOUND SH 205
  - IMPACTED STRUCTURE
  - PAYMENT REMOVAL



DALLAS DISTRICT  
Design Schematic

William L. Hale, P.E.

District Engineer

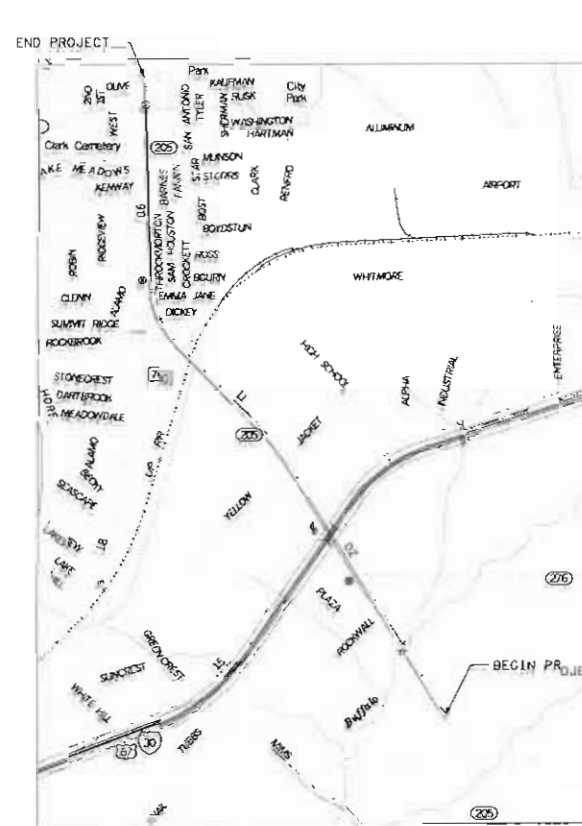
SH 205  
(GOLIAD STREET)

From: SH 276

TO: NORTH OF SH 66

CSJ: 0451-01-032

Roll 4 of 6  
Rockwall County  
STA. 106+00 TO STA. 125+00  
Design Speed: 30 MPH  
Project Length: 2.784 Miles



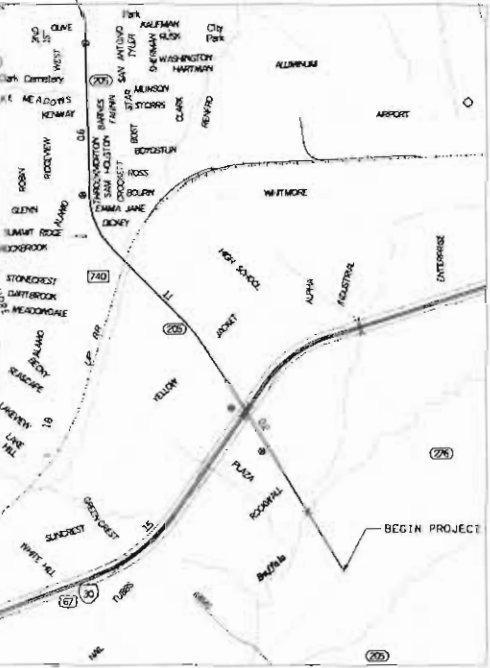
Scale: Horizontal 1:100  
Vertical 1:10

© 2005 by Texas Department of Transportation  
all rights reserved

April 2005  
Roll 4 of 6

DALLAS DISTRICT  
 Design Schematic  
 William L. Hale, P.E.  
 District Engineer  
 SH 205  
 (GOLIAD STREET)  
 From: SH 276  
 TO: NORTH OF SH 66  
 CSJ:0451-01-032

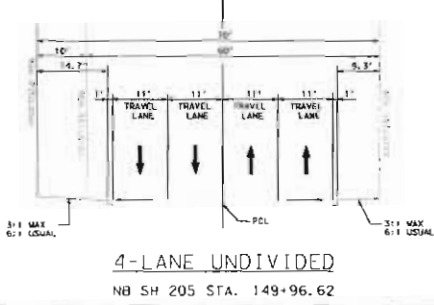
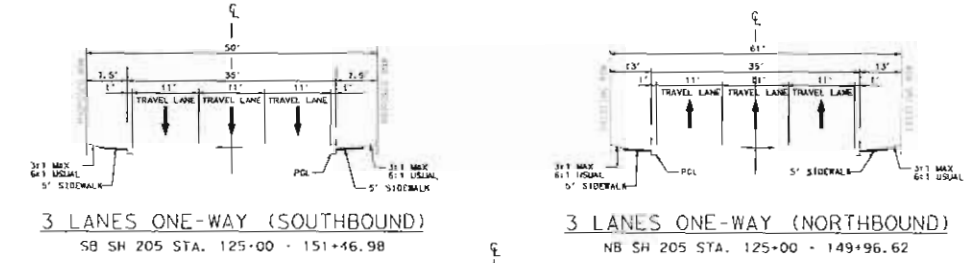
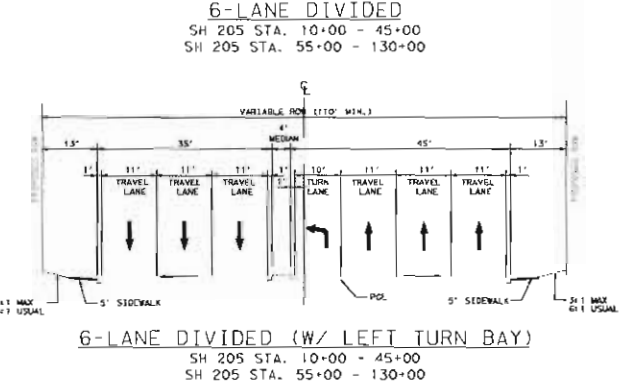
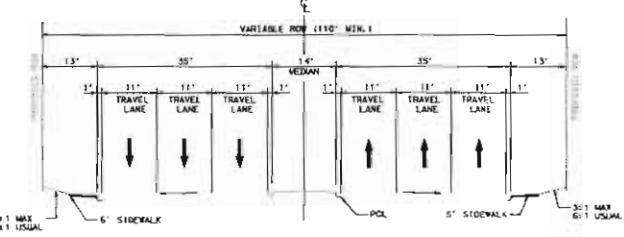
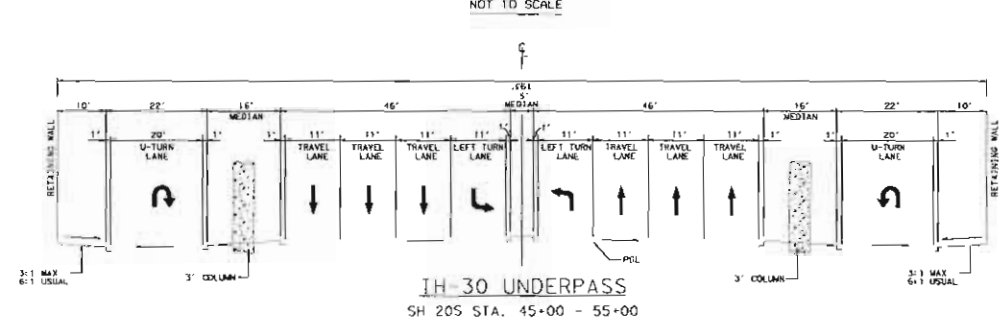
Roll 5 of 6  
 Rockwall County  
 STA. 125+00.00 TO STA. 154+26.64  
 Design Speed: 30 MPH  
 Project Length: 2.784 Miles



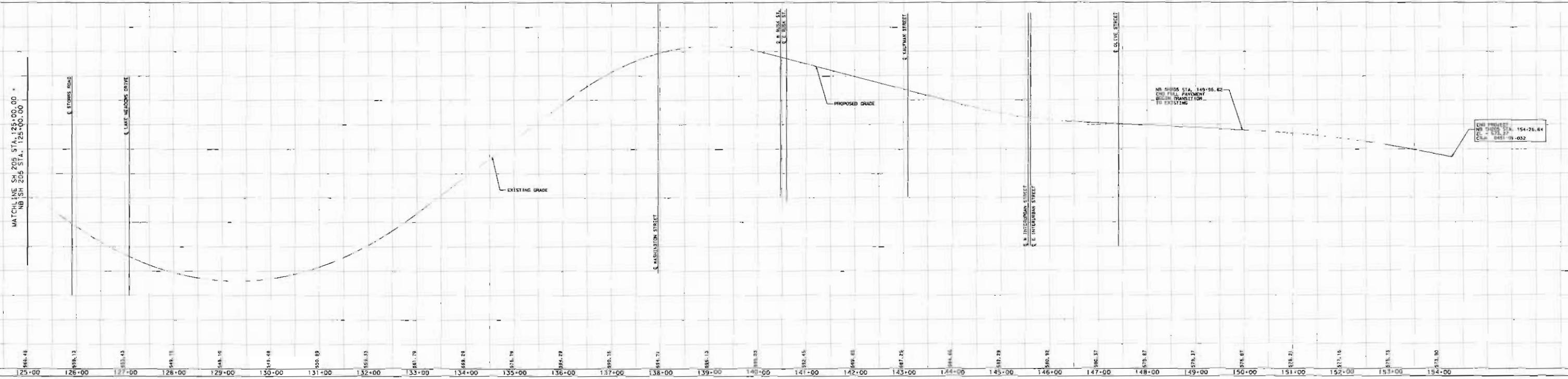
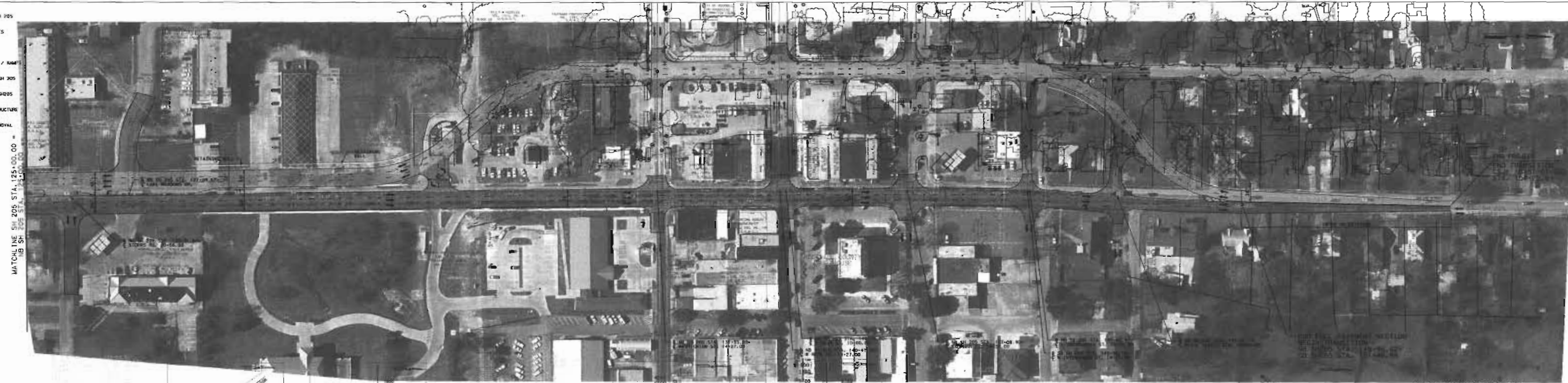
Roll 5 of 6

Final Intention  
 Not for Bidding or  
 Construction Purposes  
 SCHEMATIC PREPARED BY:  
 KEVIN M. SHEPHERD, P.E.  
 PROJECT NUMBER:  
 88642 04-15-05  
 P.E. NUMBER DATE

PROPOSED TYPICAL SECTIONS  
 NOT TO SCALE

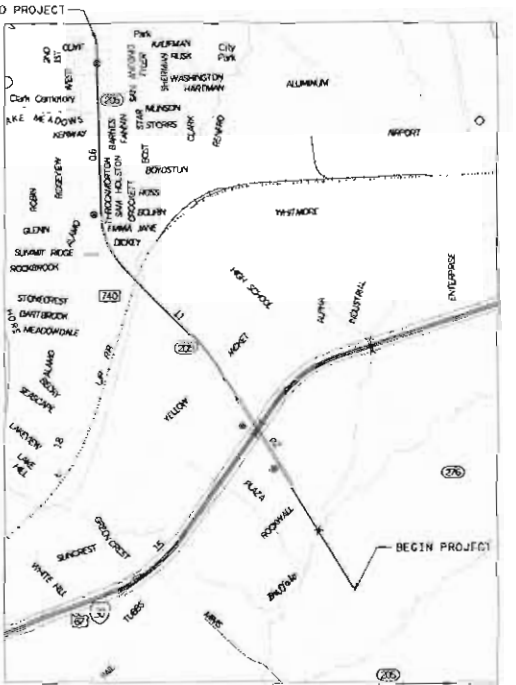


- MAJOR LANE SH 205
- CROSS STREETS
- BRIDGES
- FRONTAGE RD / RAMP
- SOUTHBOUND SH 205
- NORTHBOUND SH 205
- IMPACTED STRUCTURE
- PAVEMENT REMOVAL



DALLAS DISTRICT  
 Design Schematic  
 William L. Hale, P.E.  
 District Engineer  
 SH 205  
 (GOLIAD STREET)  
 From: SH 276  
 TO: NORTH OF SH 66  
 CSJ:0451-01-032

Roll 5 of 6  
 Rockwall County  
 STA. 125+00.00 TO STA. 154+26.64  
 Design Speed: 30 MPH  
 Project Length: 2.784 Miles

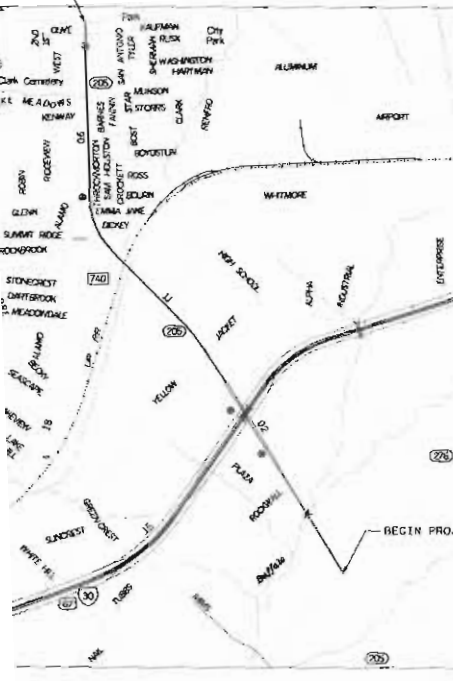


Scale: Horizontal 1:100  
 Vertical 1:10

© 2005 by Texas Department of Transportation  
 all rights reserved

DALLAS DISTRICT  
Design Schematic  
William L. Hale, P.E.  
District Engineer  
SH 205  
(GOLIAD STREET)  
From: SH 276  
TO: NORTH OF SH 66  
CSJ:0451-01-032

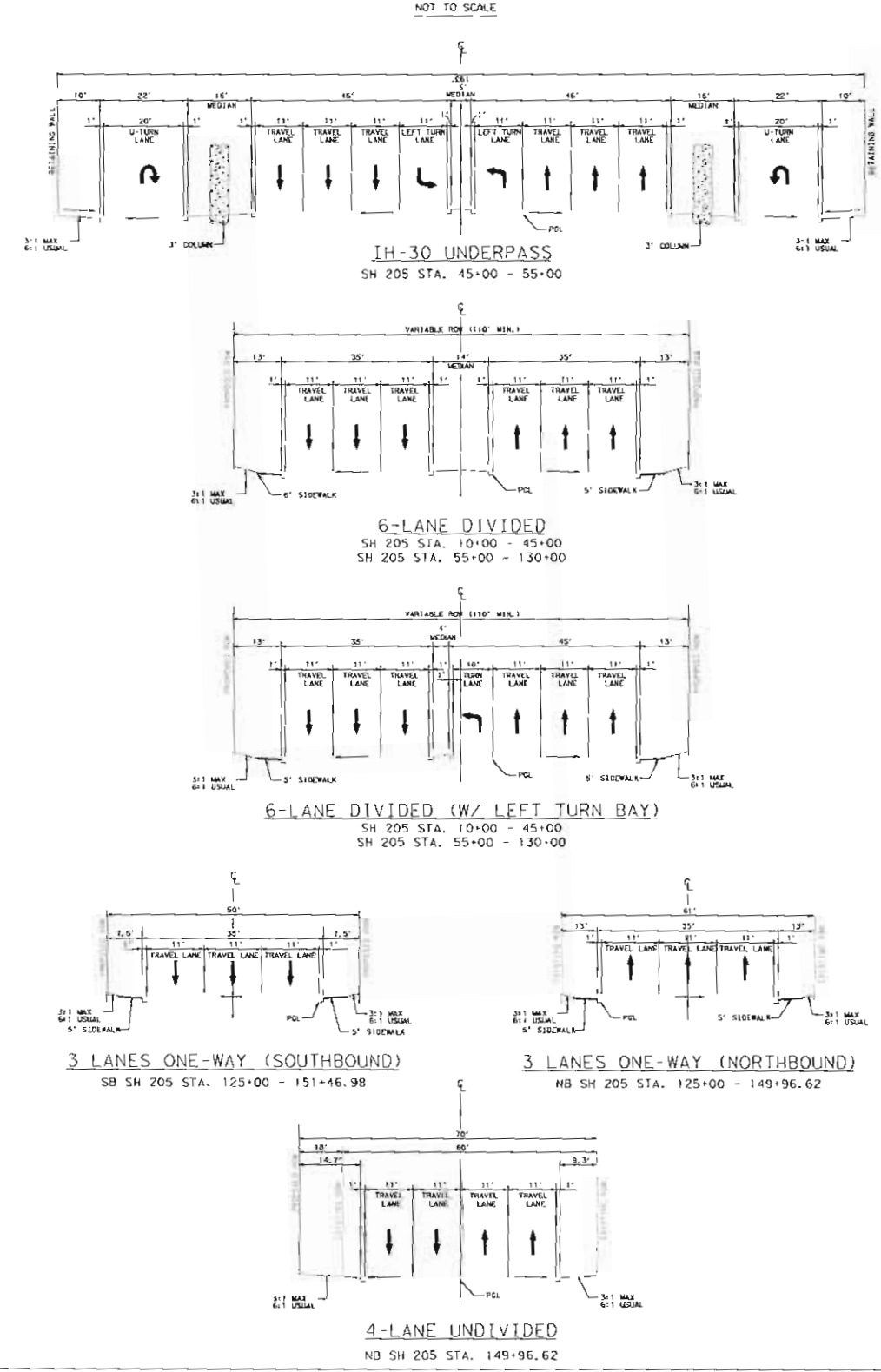
Roll 6 of 6  
Rockwall County  
Sta. 125+00.00 TO STA. 154+26.64  
Design Speed: 30 MPH  
Project Length: 2.784 Miles



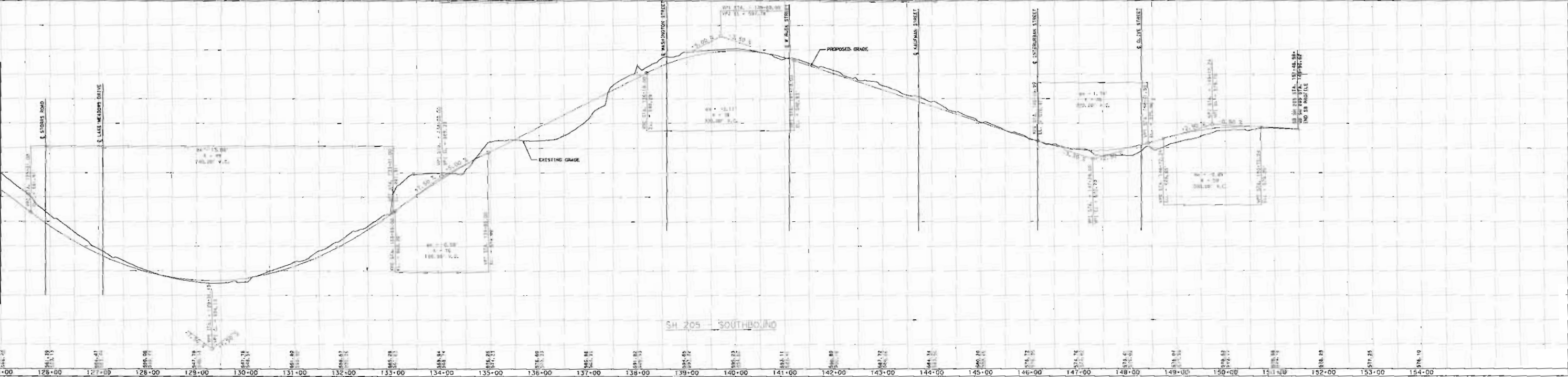
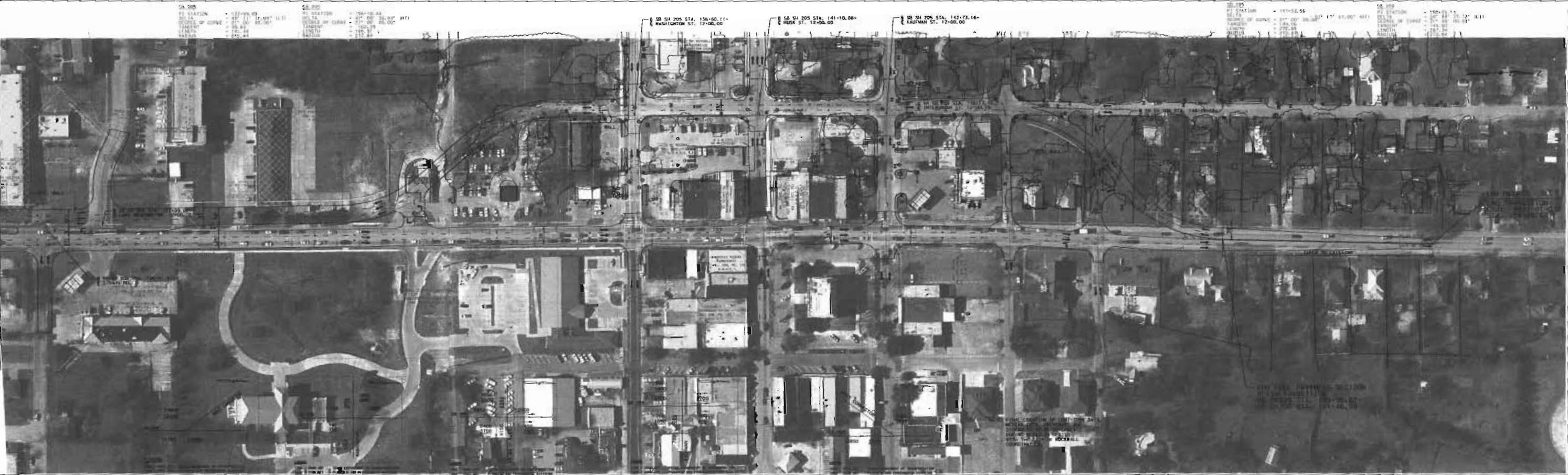
Roll 6 of 6

Not for Bidding or Construction Purposes  
SCHEMATIC PREPARED BY  
KEVIN M. SHEPHERD, P.E.  
04-15-05

PROPOSED TYPICAL SECTIONS  
NOT TO SCALE

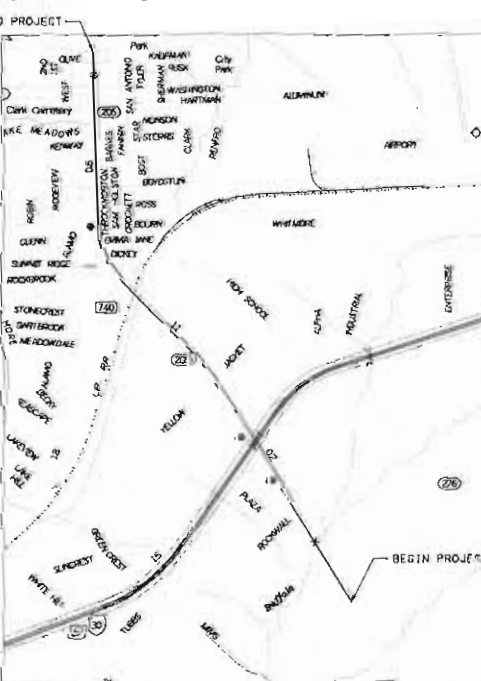


- LEGEND
- UNPAVED SH 205
  - CROSS STREETS
  - BRIDGES
  - FRONTAGE RD / RAMP
  - SOUTHBOUND SH 205
  - NORTHBOUND SH 205
  - IMPACTED STRUCTURE
  - PAVEMENT REMOVAL



DALLAS DISTRICT  
Design Schematic  
William L. Hale, P.E.  
District Engineer  
SH 205  
(GOLIAD STREET)  
From: SH 276  
TO: NORTH OF SH 66  
CSJ:0451-01-032

Roll 6 of 6  
Rockwall County  
Sta. 125+00.00 TO STA. 154+26.64  
Design Speed: 30 MPH  
Project Length: 2.784 Miles



Scale: Horizontal 1:100  
Vertical 1:10