

BURKS T. PAYNE, JR.
VOL. 416, PG. 149 &
VOL. 39, PG. 201
D.R.R.C.T.

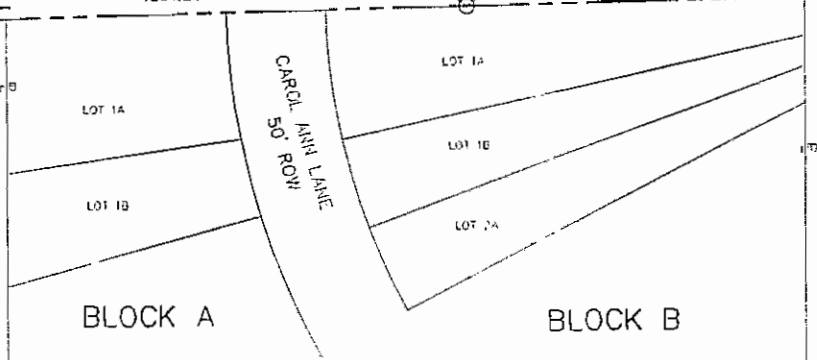
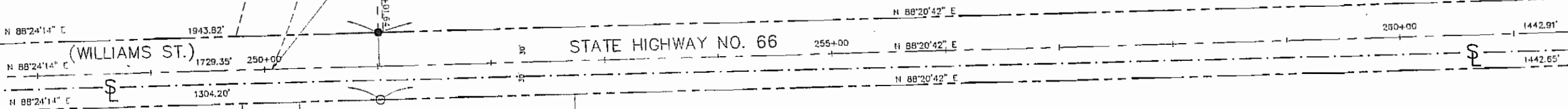
M.B. JONES SURVEY,
ABSTRACT NO. 122

M.B. JONES SURVEY,
ABSTRACT NO. 122

STA: 250+06.27 CL S.H. 66=
STA: 129+22.18 CL F.M. NO. 1141
PER TXDOT R.O.W. MAP DATED
MAY 1949.

MATCHLINE STA. 247+00

MATCHLINE STA. 262+00



OAK CREEK ADDITION
CAB. B, SLIDE 201
P.R.R.C.T.

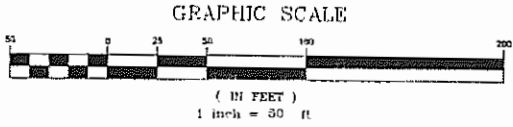
G.W. REDLIN SURVEY,
ABSTRACT NO. 183

ROCKWALL PROPERTY CORPORATION
VOL. 2002, PG. 150
D.R.R.C.T.

DATE	REVISIONS DESCRIPTION

FED. RD. DIV. NO.	ACCOUNT NUMBER				SHEET NO.
					5
REVIEWED:	STATE	STATE DISTRICT	COUNTY		
	TEXAS	DALLAS	ROCKWALL		
RECOMMENDED:	CONT.	SECT.	JOB	HIGHWAY NO.	
	0009	04	000	S. H. 66	

M.B. JONES SURVEY,
ABSTRACT NO. 122

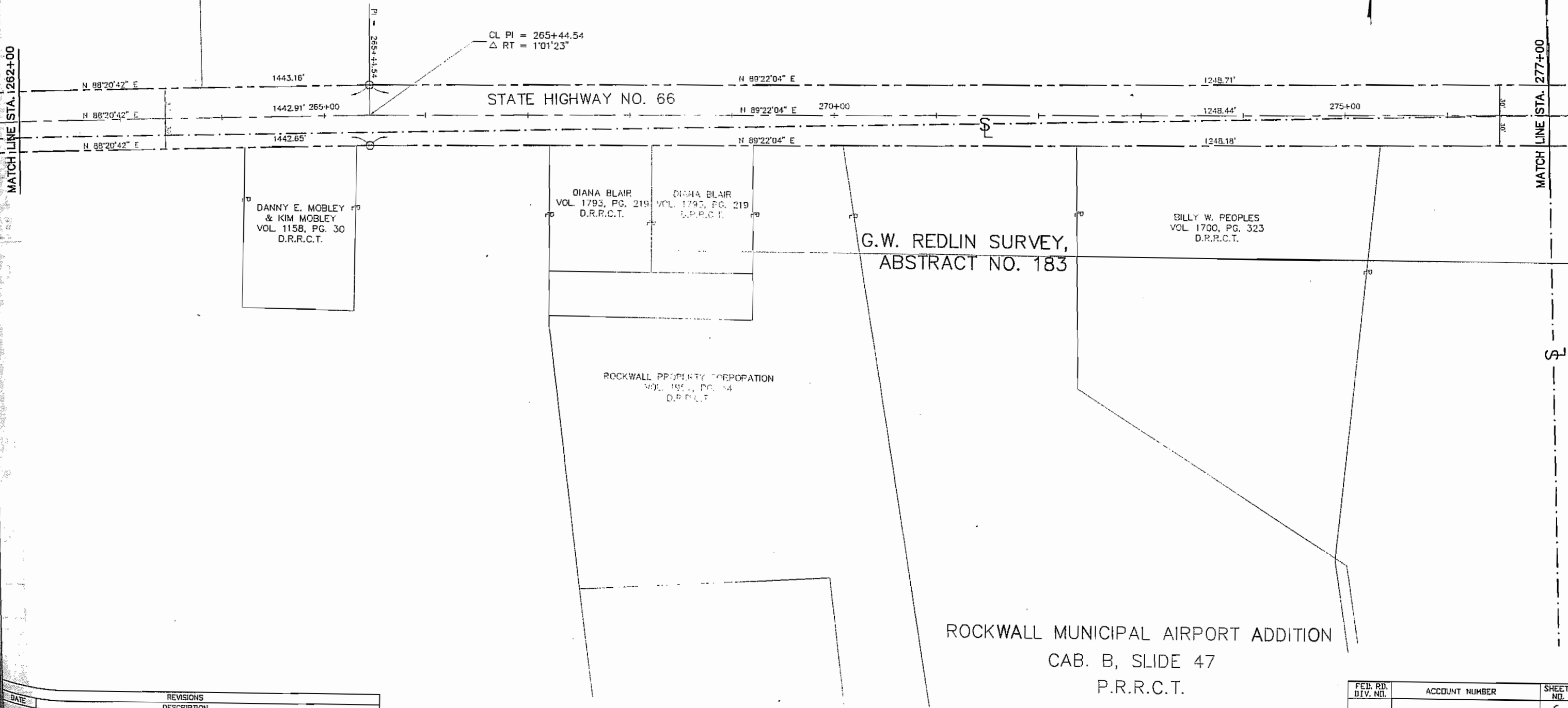


MINOR FORCE
VOL. 1700, PG. 17
D.R.R.C.T.

CL PI = 265+44.54
Δ RT = 1°01'23"

MATCH LINE STA. 1262+00

MATCH LINE STA. 277+00

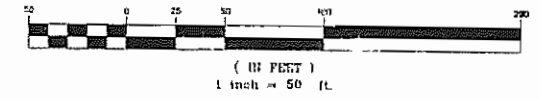


ROCKWALL MUNICIPAL AIRPORT ADDITION
CAB. B, SLIDE 47
P.R.R.C.T.

DATE	REVISIONS DESCRIPTION

FED. RD. DIV. NO.	ACCOUNT NUMBER			SHEET NO.
				6
REVIEWED:	STATE	STATE DISTRICT	COUNTY	
REVIEWED:	TEXAS	DALLAS	ROCKWALL	
RECOMMENDED:	CONT.	SECT.	JOB	HIGHWAY NO.
	0009	04	000	S. H. 66

GRAPHIC SCALE



W. DALTON SURVEY,
ABSTRACT NO. 72

MICHAEL L. PEOPLES
VOL. 1081, VOL. 151
D.R.R.C.T.

MICHAEL A. FLORENCE
VOL. 990, PG. 116
D.R.R.C.T.

CENTERLINE CURVE DATA

R=916.00
L=202.86
T=101.85
 $\Delta=12^{\circ}41'21''$
CB=584'19'36"E
CD=202.45

R=886.00
L=196.17
T=96.49
 $\Delta=12^{\circ}41'10''$
CB=584'19'42"E
CD=195.77

R=860.00
L=186.28
T=95.33
 $\Delta=12^{\circ}39'01''$
CB=584'18'37"W
CD=189.49

R=600.00
L=176.63
T=86.68
 $\Delta=12^{\circ}39'01''$
CB=584'18'37"W
CD=176.27

R=946.00
L=209.41
T=105.13
 $\Delta=12^{\circ}40'59''$
CB=584'19'36"E
CD=208.98

CENTERLINE CURVE DATA

PI STATION =
R=530.00
L=118.125
T=59.100
 $\Delta=12^{\circ}39'02''$
CB=584'18'37"W
CD=112.89

D. HARR SURVEY,
ABSTRACT NO. 102

H. FRANK BROWN
VOL. 103, PG. 399
D.R.R.C.T.

H. FRANK BROWN
VOL. 112, PG. 116
D.R.R.C.T.

RICHARD W. ELLIS
& MARY JANE ELLIS
VOL. 101, PG. 985
D.R.R.C.T.

MICHAEL O. COLLIER,
THERESA L. ROBBINS,
& JUDY K. COLLIER
VOL. 1881, PG. 190
D.R.R.C.T.

EDGAR WESSON
VOL. 1783, PG. 134
D.R.R.C.T.

EDGAR WESSON
VOL. 1783, PG. 134
D.R.R.C.T.

OPAL L. RYAN
VOL. 142, PG. 59
D.R.R.C.T.

BILL K. RYAN
VOL. 148, PG. 525
D.R.R.C.T.

VINCENT EDWARDS & RITA EDWARDS
VOL. 1833, PG. 82
D.R.R.C.T.

TRACT 5
0.5 AC.

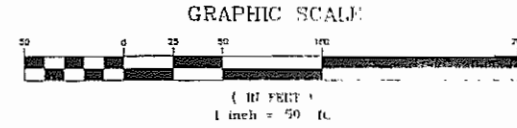
STATE HIGHWAY NO. 66

MATCH LINE STA. 277+00

MATCH LINE STA. 292+00

DATE	REVISIONS DESCRIPTION

REVIEWED:	FED. RD. DIV. NO.	ACCOUNT NUMBER			SHEET NO.
					7
REVIEWED:	STATE	STATE DISTRICT	COUNTY		
	TEXAS	DALLAS	ROCKWALL		
RECOMMENDED:	CONTR.	SECT.	JOB	HIGHWAY NO.	
	0009	04	000	S. H. 66	



CENTERLINE CURVE DATA

R=960.00
L=189.28
T=94.95
Δ=11°17'49"
CB=N83°41'00"E
CD=188.98

MICHAEL A. FLORENCE
VOL. 990, PG. 116
D.R.R.C.T.

W. DALTON SURVEY,
ABSTRACT NO. 72

REST HAVEN FUNERAL HOMES, INC.
VOL. 771, PG. 112
D.R.R.C.T.

R=930.00
L=183.37
T=91.98
Δ=11°17'49"
CB=N63°11'00"E
CD=183.07

R=965.00
L=186.78
T=93.68
Δ=11°05'24"
CB=S83°34'47"W
CD=186.49

R=905.00
L=175.17
T=87.86
Δ=11°05'24"
CB=S83°34'47"W
CD=174.90

CENTERLINE CURVE DATA

R=935.00
L=180.98
T=90.77
Δ=11°05'24"
CB=S83°34'47"W
CD=180.89

J. DIANE FOLZENLOGEN
VOL. 110, PG. 148
D.R.R.C.T.

CAIN CEMETERY CORPORATION
VOL. 774, PG. 122
D.R.R.C.T.

D. HARR SURVEY,
ABSTRACT NO. 102

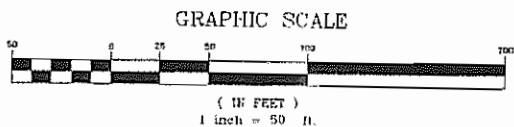
MATCH LINE STA. 292+00

MATCH LINE STA. 307+00

STATE HIGHWAY NO. 66

DATE	REVISIONS DESCRIPTION

	FED. RD. DIV. NO.	ACCOUNT NUMBER			SHEET NO.
					8
REVIEWED:	STATE	STATE DISTRICT	COUNTY		
REVIEWED:	TEXAS	DALLAS	ROCKWALL		
RECOMMENDED:	COUNT.	SECT.	JOB	HIGHWAY NO.	
	0009	04	000	S. H. 66	



DEWAYNE CAIN & ANNE CAIN
VOL. 99, PG. 344
D.R.R.C.T.

W. DALTON SURVEY,
ABSTRACT NO. 72

GARY L. HARTIS & JAMIE A. HARTIS
VOL. 180, PG. 62
D.R.R.C.T.

ZION HILL ESTATES
CAB. A, SLIDE 271
P.R.R.C.T.

LOT 10

BLOCK A

CL PI = 317+38.64
Δ RT = 0°12'20"

MATCH LINE STA. 307+00

N 89°07'29" E

2063.13'

N 89°19'49" E

1026.00'

N 89°07'29" E

310+00

315+00

2063.07'

N 89°19'49" E

320+00

1019.34'

N 89°07'29" E

STATE HIGHWAY NO. 66

2063.02'

N 89°19'49" E

1019.55'

ZION CIRCLE
60' ROW

MATCH LINE STA. 322+00

CAIN CEMETERY CORPORATION
VOL. 774, PG. 122
D.R.R.C.T.

JAMES E. SPLAWN & MARTHA SPLAWN
VOL. 1066, PG. 147
D.R.R.C.T.

D. HARR SURVEY,
ABSTRACT NO. 102

DATE	REVISIONS DESCRIPTION

FED. RD. DIV. NO.	ACCOUNT NUMBER	SHEET NO.
		9

REVIEWED:	STATE	STATE DISTRICT	COUNTY	
REVIEWED:	TEXAS	DALLAS	ROCKWALL	
RECOMMENDED:	CONT.	SECT.	JOB	HIGHWAY NO.
	0009	04	000	S. H. 66

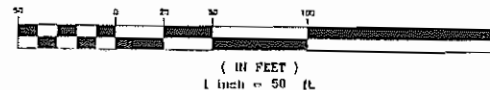
W. DALTON SURVEY,
ABSTRACT NO. 72

ZION HILL ESTATES
CAB. A, SLIDE 271
P.R.R.C.T.

BLOCK B

F.M. ROAD NO. 549

GRAPHIC SCALE



R.B. IRVINE SURVEY,
ABSTRACT NO. 120

INVESTMENT REAL ESTATE MARKETING, INC.
RALPH M. HALL, TRUSTEE
VOL. 123, PG. 969
D.R.R.C.T.

CENTERLINE CURVE DATA

R=700.00
L=157.25
T=78.96
Δ=12°52'16"
CB=S84°38'52"E
CD=156.92

R=670.00
L=150.51
T=75.57
Δ=12°52'16"
CB=S84°38'52"E
CD=150.20

R=730.00
L=163.99
T=82.34
Δ=12°52'17"
CB=S84°38'52"E
CD=163.65

CENTERLINE CURVE DATA

R=800.00
L=173.94
T=87.31
Δ=12°27'27"
CB=N84°28'27"W
CD=173.60

STATE HIGHWAY NO. 66

JOHN KEITH TAYLOR
VOL. 756, PG. 284
D.R.R.C.T.

D. HARR SURVEY,
ABSTRACT NO. 102

F.M. ROAD NO. 549

BUDDY JOE JOHNSON, JR. & AMANDA JOHNSON
VOL. 1737, PG. 39
D.R.R.C.T.

R.B. IRVINE SURVEY,
ABSTRACT NO. 120

ROLLING HILLS
FIRST INSTALLMENT
CAB. A, SLIDE 123
P.R.R.C.T.

ZION CIRCLE
60' ROW

MATCH LINE STA. 322+00

MATCH LINE STA. 337+00

HILL SIDE DRIVE
50' ROW

DATE	REVISIONS DESCRIPTION

FED. RD. DIV. NO.	ACCOUNT NUMBER	SHEET NO.
		10
REVIEWED:	STATE	STATE DISTRICT
	TEXAS	DALLAS
RECOMMENDED:	COUNTY	COUNTY
	0009	04
	JOB	HIGHWAY NO.
	000	S. H. 66

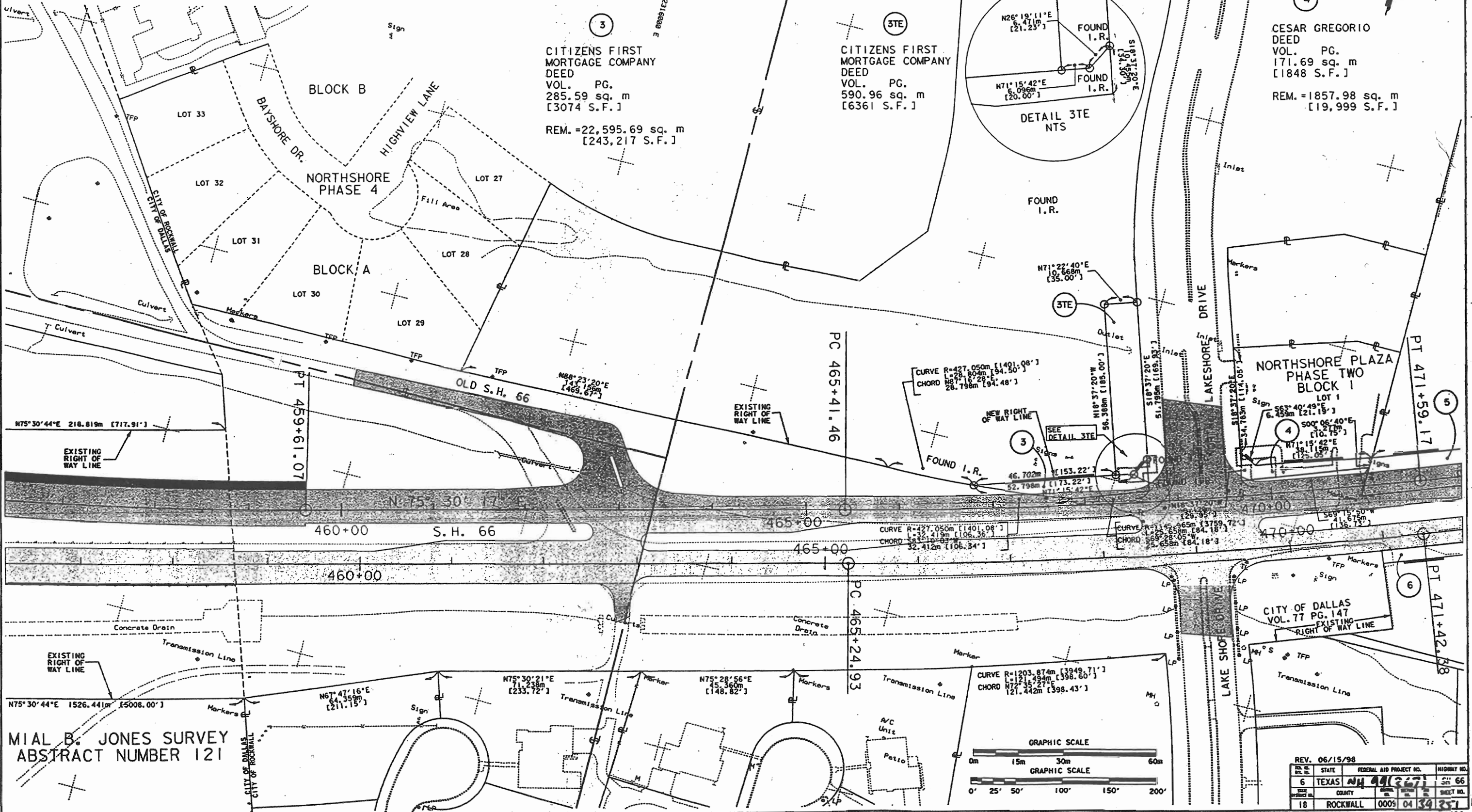
WATSON B. BOWLES SURVEY
ABSTRACT NUMBER 12

BENJAMIN F. BOYDSTUN SURVEY
ABSTRACT NUMBER 14

3
CITIZENS FIRST MORTGAGE COMPANY DEED
VOL. PG. 285.59 sq. m [3074 S.F.]
REM. = 22,595.69 sq. m [243,217 S.F.]

3TE
CITIZENS FIRST MORTGAGE COMPANY DEED
VOL. PG. 590.96 sq. m [6361 S.F.]

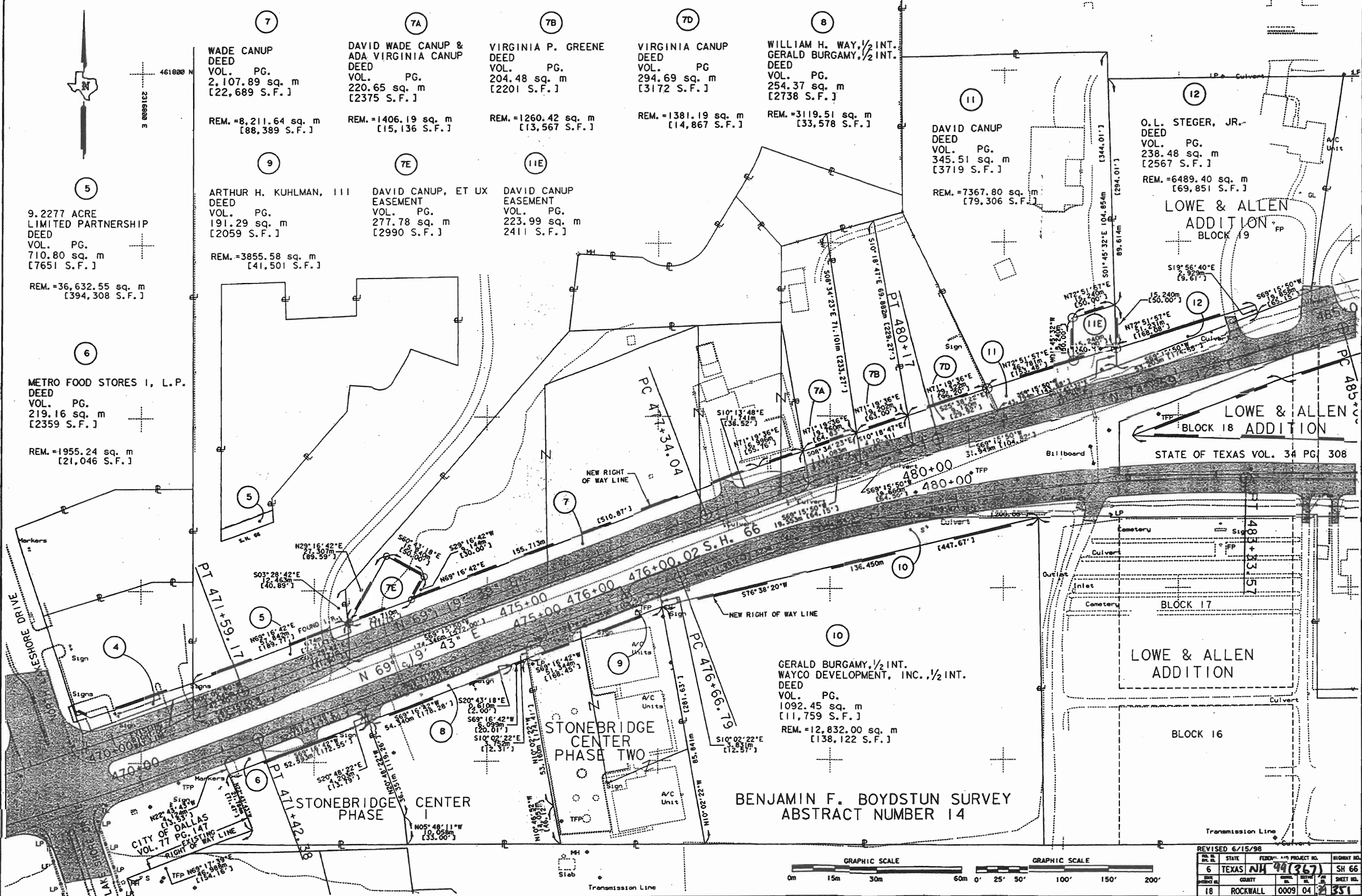
4
CESAR GREGORIO DEED
VOL. PG. 171.69 sq. m [1848 S.F.]
REM. = 1857.98 sq. m [19,999 S.F.]



MIAL B. JONES SURVEY
ABSTRACT NUMBER 121

REV. 06/15/98

REV. NO.	STATE	FEDERAL AID PROJECT NO.	HIGHWAY NO.
6	TEXAS	44(367)	SH 66
	COUNTY		SHEET NO.
18	ROCKWALL	0009 04 34	257

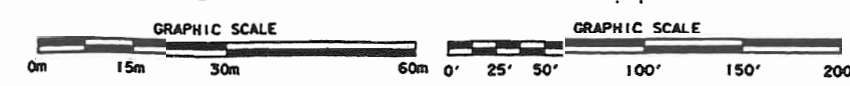


7	WADE CANUP DEED VOL. PG. 2,107.89 sq. m [22,689 S.F.] REM.=8,211.64 sq. m [88,389 S.F.]	7A	DAVID WADE CANUP & ADA VIRGINIA CANUP DEED VOL. PG. 220.65 sq. m [2375 S.F.] REM.=1406.19 sq. m [15,136 S.F.]	7B	VIRGINIA P. GREENE DEED VOL. PG. 204.48 sq. m [2201 S.F.] REM.=1260.42 sq. m [13,567 S.F.]	7D	VIRGINIA CANUP DEED VOL. PG. 294.69 sq. m [3172 S.F.] REM.=1381.19 sq. m [14,867 S.F.]	8	WILLIAM H. WAY, 1/2 INT. GERALD BURGAMY, 1/2 INT. DEED VOL. PG. 254.37 sq. m [2738 S.F.] REM.=3119.51 sq. m [33,578 S.F.]	11	DAVID CANUP DEED VOL. PG. 345.51 sq. m [3719 S.F.] REM.=7367.80 sq. m [79,306 S.F.]	12	O.L. STEGER, JR. DEED VOL. PG. 238.48 sq. m [2567 S.F.] REM.=6489.40 sq. m [69,851 S.F.]
9	ARTHUR H. KUHLMAN, III DEED VOL. PG. 191.29 sq. m [2059 S.F.] REM.=3855.58 sq. m [41,501 S.F.]	7E	DAVID CANUP, ET UX EASEMENT VOL. PG. 277.78 sq. m [2990 S.F.]	7I	DAVID CANUP EASEMENT VOL. PG. 223.99 sq. m [2411 S.F.]	11							
5	9.2277 ACRE LIMITED PARTNERSHIP DEED VOL. PG. 710.80 sq. m [7651 S.F.] REM.=36,632.55 sq. m [394,308 S.F.]												
6	METRO FOOD STORES I, L.P. DEED VOL. PG. 219.16 sq. m [2359 S.F.] REM.=1955.24 sq. m [21,046 S.F.]												

STATE OF TEXAS VOL. 34 PG. 308
LOWE & ALLEN ADDITION BLOCK 18
LOWE & ALLEN ADDITION BLOCK 19

LOWE & ALLEN ADDITION BLOCK 17
LOWE & ALLEN ADDITION BLOCK 16

BENJAMIN F. BOYDSTUN SURVEY ABSTRACT NUMBER 14



REVISED 6/15/98	STATE	FEDERAL PROJECT NO.	HIGHWAY NO.
6	TEXAS	NH 94(367)	SH 66
18	ROCKWALL	0009 04	351

D:\BHPTE\USR2\0184512\SH66\SHEET9.DGN

13
ROBERT D. SPARKS
DEED
VOL. PG.
14.31 sq. m [154 S.F.]
REM.=2726.25 sq. m
[29,345 S.F.]

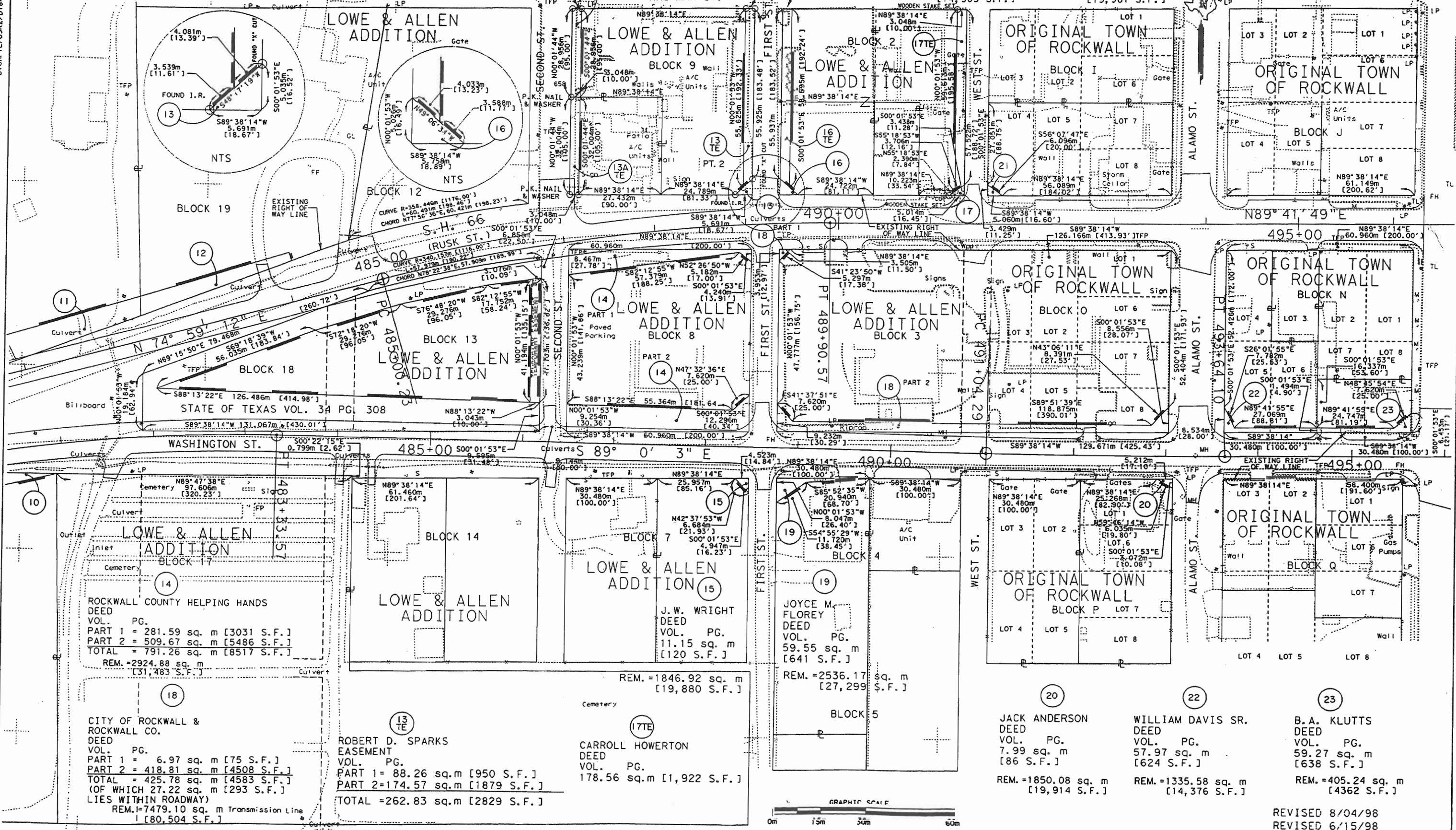
13A
ROBERT D. SPARKS
EASEMENT
VOL. PG.
97.55 sq. m [1050 S.F.]

16
ROBERT D. SPARKS
DEED
VOL. PG.
929.034 sq. m [10,156 S.F.]
REM.=1841.252 sq. m
[19819 S.F.]

16
ROBERT D. SPARKS
EASEMENT
VOL. PG.
174.65 sq. m [1880 S.F.]

17
CARROLL HOWERTON
DEED
VOL. PG.
8.64 sq. m [93 S.F.]
REM.=1384.73 sq. m
[14,905 S.F.]

21
H.N. HEATH
DEED
VOL. PG.
8.64 sq. m [93 S.F.]
REM.=1855.00 sq. m
[19,967 S.F.]



STATE OF TEXAS VOL. 34 PG. 308

ROCKWALL COUNTY HELPING HANDS
DEED
VOL. PG.
PART 1 = 281.59 sq. m [3031 S.F.]
PART 2 = 509.67 sq. m [5486 S.F.]
TOTAL = 791.26 sq. m [8517 S.F.]
REM.=2924.88 sq. m
[31,483 S.F.]

18
CITY OF ROCKWALL &
ROCKWALL CO.
DEED
VOL. PG.
PART 1 = 6.97 sq. m [75 S.F.]
PART 2 = 418.81 sq. m [4508 S.F.]
TOTAL = 425.78 sq. m [4583 S.F.]
(OF WHICH 27.22 sq. m [293 S.F.]
LIES WITHIN ROADWAY)
REM.=7479.10 sq. m
[80,504 S.F.]

13
ROBERT D. SPARKS
EASEMENT
VOL. PG.
PART 1= 88.26 sq.m [950 S.F.]
PART 2=174.57 sq.m [1879 S.F.]
TOTAL =262.83 sq.m [2829 S.F.]

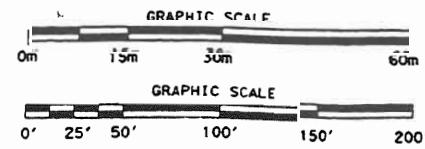
17TE
CARROLL HOWERTON
DEED
VOL. PG.
178.56 sq.m [1,922 S.F.]

19
JOYCE M.
FLOREY
DEED
VOL. PG.
59.55 sq. m
[641 S.F.]
REM.=2536.17 sq. m
[27,299 S.F.]

20
JACK ANDERSON
DEED
VOL. PG.
7.99 sq. m
[86 S.F.]
REM.=1850.08 sq. m
[19,914 S.F.]

22
WILLIAM DAVIS SR.
DEED
VOL. PG.
57.97 sq. m
[624 S.F.]
REM.=1335.58 sq. m
[14,376 S.F.]

23
B.A. KLUTTS
DEED
VOL. PG.
59.27 sq. m
[638 S.F.]
REM.=405.24 sq. m
[4362 S.F.]



REVISED 8/04/98
REVISED 6/15/98

PLAT NO.	STATE	FEDERAL AID PROJECT NO.	HIGHWAY NO.
6	TEXAS	104 91(37)	SH 66
PLAT NO.	COUNTY	SECTION	RANGE
18	ROCKWALL	0009 04	24 35