

WILLIAM DALTON SURVEY-ABST. NO. 72

Mt. Zion Water Supply Corp.
 0.095 Acres
 Vol. 163 Page 279
 Lt. Sta. 2+83.45-3+19
 Deed
 0.070 Acres
 - 0.016 Acres in Co. Rd.
 0.054 Acres Net

James J. Csihar et al
 1.001 Acres
 Cause No. 82-70 Vol. 178 Page 901
 Lt. Sta. 7+31-9+37
 Judg.
 0.236 Acres
 - 0.095 Acres in Co. Rd.
 0.141 Acres Net

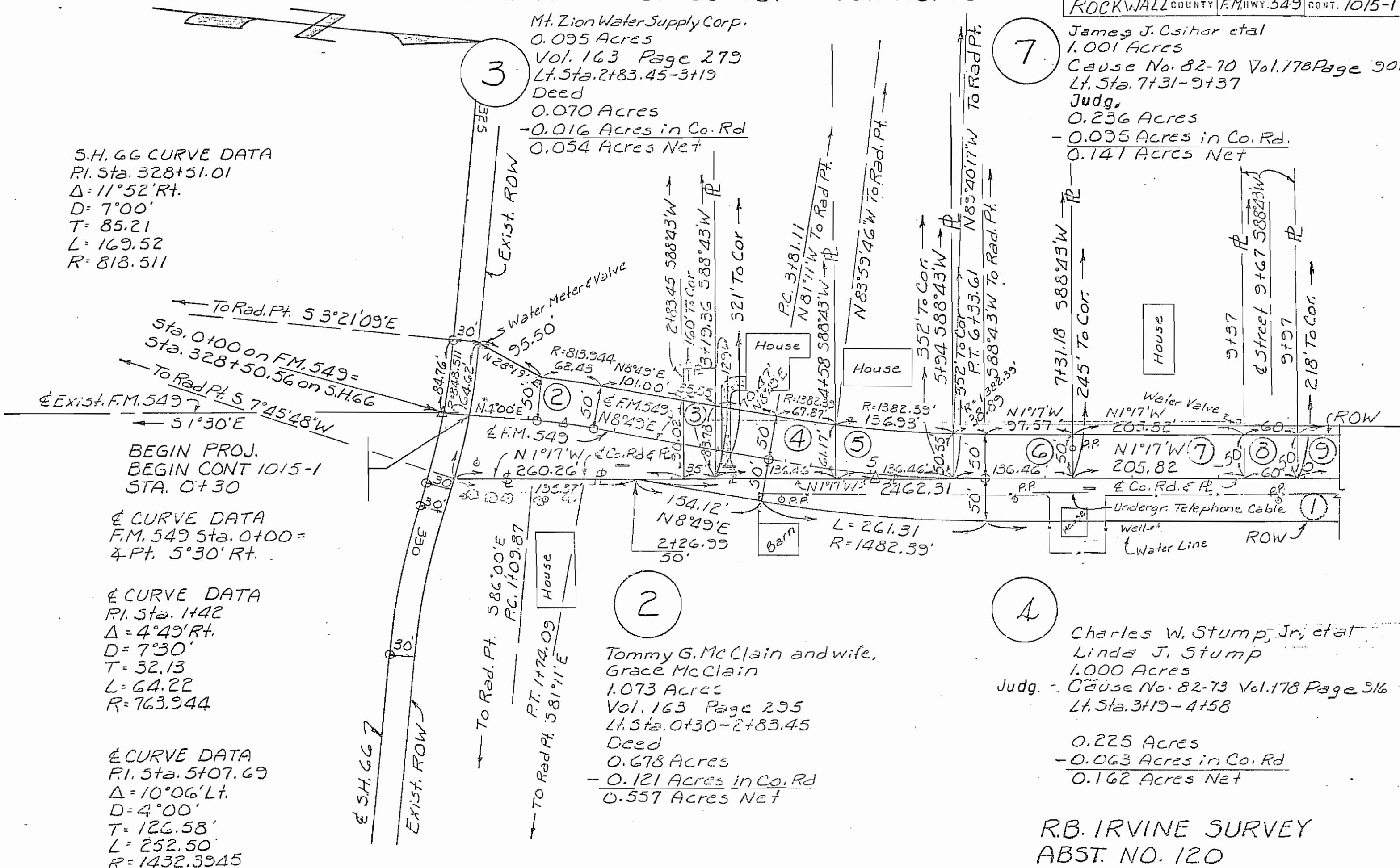
S.H. 66 CURVE DATA
 P.I. Sta. 328+51.01
 $\Delta = 11^{\circ}52' \text{ Rt.}$
 $D = 7^{\circ}00'$
 $T = 85.21$
 $L = 169.52$
 $R = 818.511$

To Rad. Pt. $S 3^{\circ}21'09'' \text{ E}$
 Sta. 0+100 on F.M. 549 =
 Sta. 328+50.56 on S.H. 66
 E Exist. F.M. 549
 $S 1^{\circ}30' \text{ E}$
 BEGIN PROJ.
 BEGIN CONT 1015-1
 STA. 0+30

E CURVE DATA
 F.M. 549 Sta. 0+00 =
 $4 \text{ Pt. } 5^{\circ}30' \text{ Rt.}$

E CURVE DATA
 P.I. Sta. 1+42
 $\Delta = 4^{\circ}49' \text{ Rt.}$
 $D = 7^{\circ}30'$
 $T = 32.13$
 $L = 64.22$
 $R = 763.944$

E CURVE DATA
 P.I. Sta. 5+07.69
 $\Delta = 10^{\circ}06' \text{ Lt.}$
 $D = 4^{\circ}00'$
 $T = 126.58'$
 $L = 252.50$
 $R = 1432.3945$



2
 Tommy G. McClain and wife,
 Grace McClain
 1.073 Acres
 Vol. 163 Page 295
 Lt. Sta. 0+30-2+83.45
 Deed
 0.678 Acres
 - 0.121 Acres in Co. Rd.
 0.557 Acres Net

4
 Charles W. Stump, Jr, et al
 Linda J. Stump
 1.000 Acres
 Judg. - Cause No. 82-73 Vol. 178 Page 316
 Lt. Sta. 3+19-4+58
 0.225 Acres
 - 0.063 Acres in Co. Rd.
 0.162 Acres Net

R.B. IRVINE SURVEY
 ABST. NO. 120

WILLIAM DALTON SURVEY
ABST. NO. 72

8

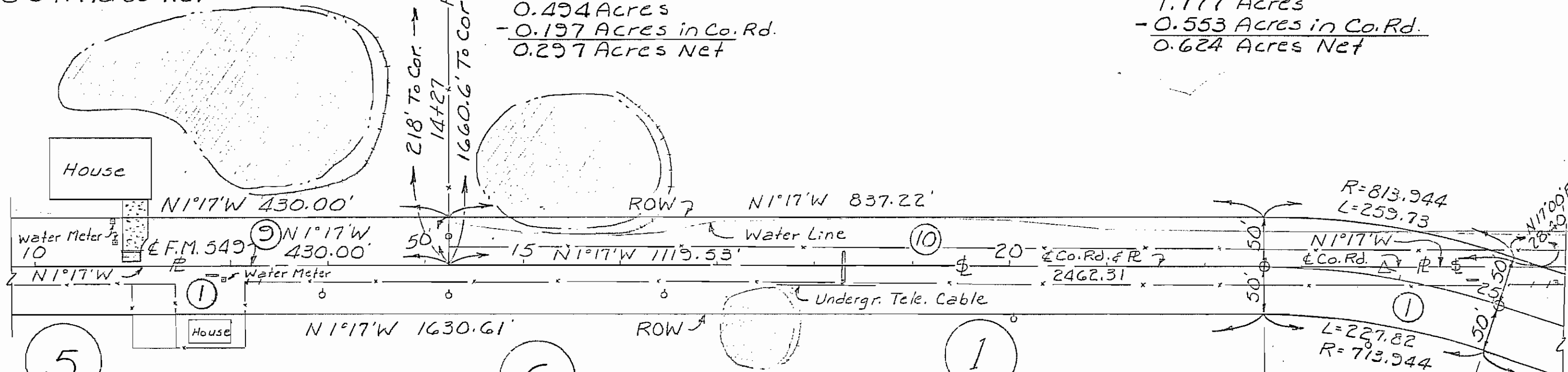
Zion Hill Estates
Tommy G. McClain and wife Grace McClain
37.442 Acres
Vol. 166 Page 469
Lt. Sta. 9+37-9+97
Deed
0.069 Acres
- 0.028 Acres in Co. Rd.
0.041 Acres Net

9

Tommie J. Woody and wife,
Jessye Jean Woody
1.836 Acres
Vol. 163 Page 716
Lt. Sta. 9+97-14+27
Deed
0.494 Acres
- 0.197 Acres in Co. Rd.
0.297 Acres Net

10

Erskine Williams, Jr. et ux Mary
46.875 Acres
Vol. 163 Page 287
Lt. Sta. 14+27-25+36.40
Deed
1.177 Acres
- 0.553 Acres in Co. Rd.
0.624 Acres Net



5

David L. Janik and wife
Diane M. Janik
1.000 Acres
Vol. 163 Page 292
Lt. Sta. 4+58-5+94
Deed
0.171 Acres
- 0.063 Acres in Co. Rd.
0.108 Acres Net

6

Thomas E. Heffran, et al
1.000 Acres
Judg. Cause No. 82-72 Vol. 178 Page 911
Lt. Sta. 5+94-7+31
Deed
3.058
- 1.190 Acres in Co. Rd.
1.868 Acres Net

1

W. W. Stodghill and wife, Willie Stodghill
91.01 Acres
Vol. 163 Page 276
Rt. Sta. 2+26.99-27+52.90
Deed
3.058
- 1.190 Acres in Co. Rd.
1.868 Acres Net

R.B. IRVINE SURVEY
ABST. NO. 20

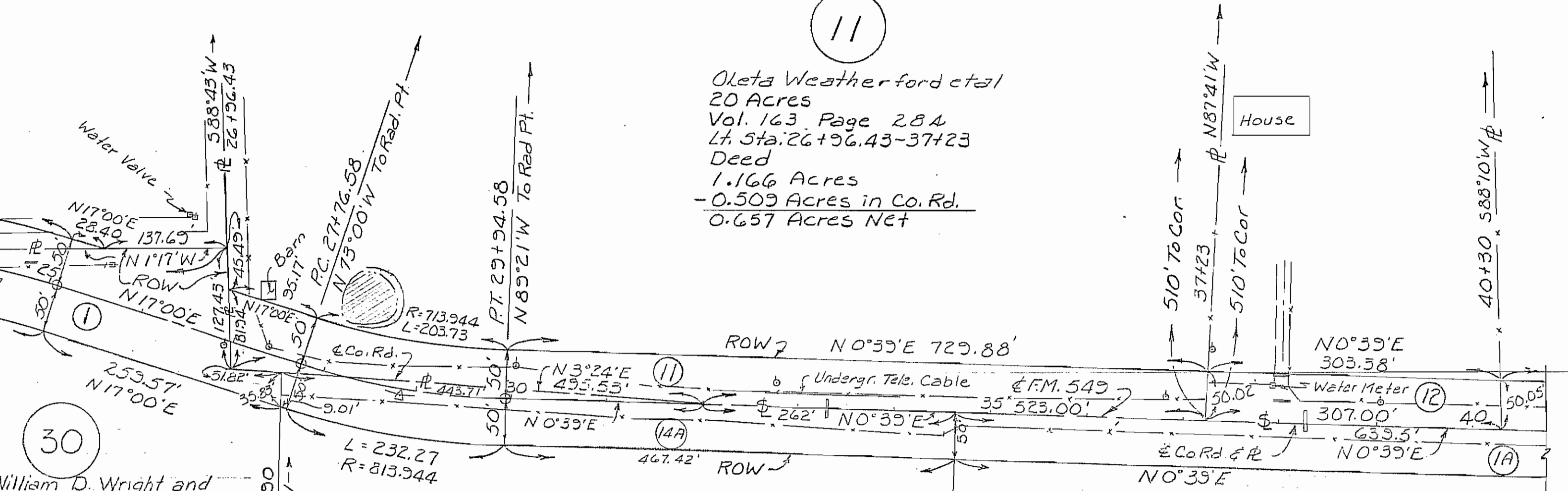
CURVE DATA
P.I. Sta. 23+87.15
Δ = 18°17' Rt.
D = 7°30'
T = 122.93'
L = 243.78
R = 763.944

WILLIAM DALTON SURVEY
ABST. NO. 72

11

Oleta Weatherford et al
20 Acres
Vol. 163 Page 284
Lt. Sta. 26+96.43-37+23
Deed
1.166 Acres
- 0.509 Acres in Co. Rd.
0.657 Acres Net

House



30

William D. Wright and wife Melinda M. Wright
7.0 Acres
Vol. 163 Page 268
Lt. Sta. 41+01.50-42+50
Deed
0.170
0.061
0.105 Acres Net

CURVE DATA
P.I. Sta. 28+86.33
 $\Delta = 16^\circ 21' Lt.$
D = 7°30'
T = 109.75
L = 218.00
R = 763.944

14A

Donald R. Stodghill and wife, Patsy A. Stodghill
20 Acres
Vol. 163 Page 302
Lt. Sta. 27+52.90-34+62
Deed
0.854
- 0.324 Acres in Co. Rd.
0.530 Acres Net

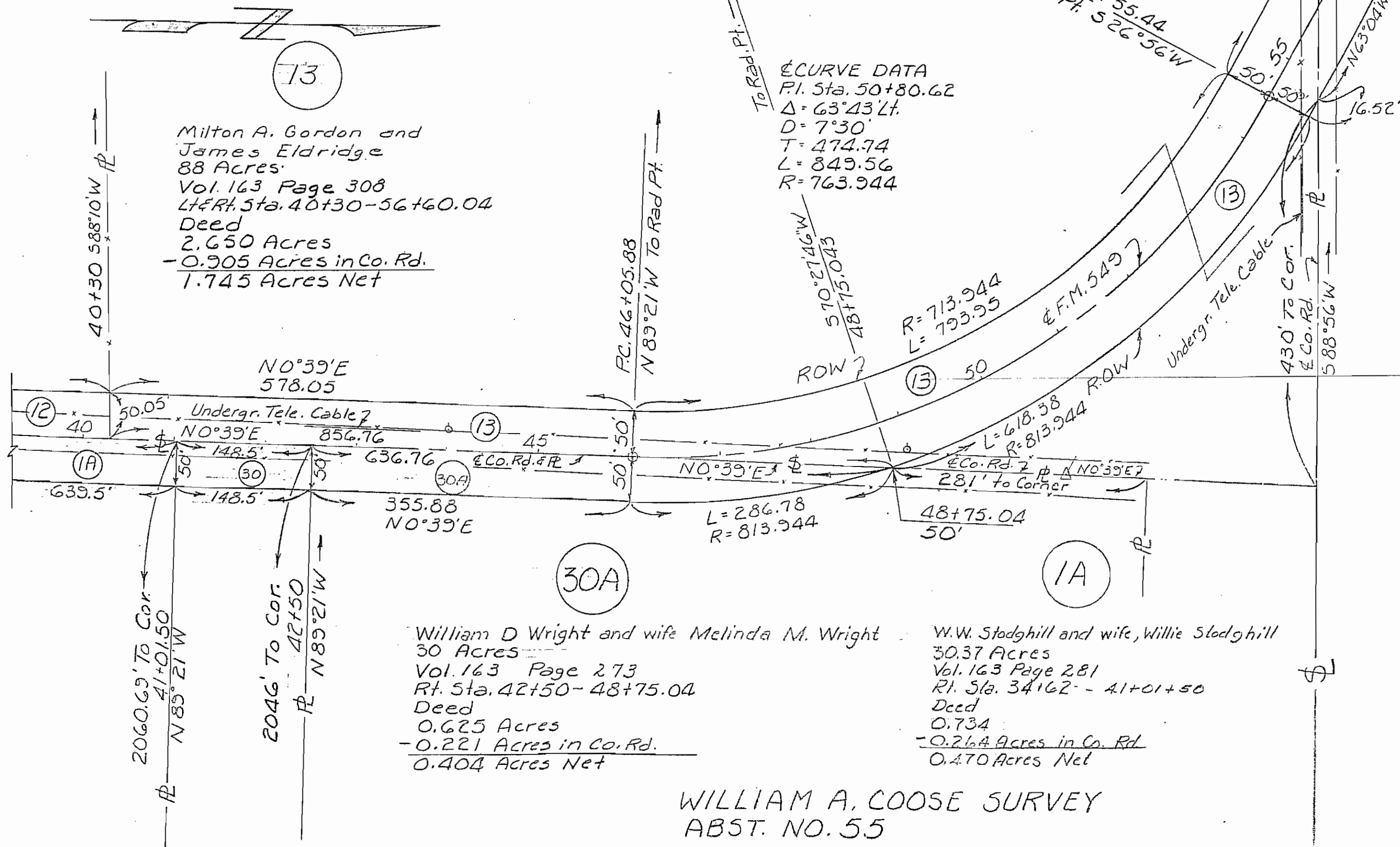
R.B. IRVINE SURVEY
ABST. NO. 20

12

W. Kyle Allen and wife, Dorothy E. Allen
3.548 Acres
Vol. 163 Page 300
Lt. Sta. 37+23-40+30
Deed
0.350 Acres
- 0.183 Acres in Co. Rd.
0.167 Acres Net

WILLIAM A. COOSE SURVEY
ABST. NO. 55

WILLIAM DALTON SURVEY
ABST. NO. 72



13
Milton A. Gordon and
James Eldridge
88 Acres
Vol. 163 Page 308
L&Rt. Sta. 40+30-56+60.04
Deed
2.650 Acres
- 0.905 Acres in Co. Rd.
1.745 Acres Net

ECURVE DATA
P.I. Sta. 50+80.62
Δ = 63°43' Lt.
D = 7°30'
T = 474.74
L = 849.56
R = 763.944

30A
William D Wright and wife Melinda M. Wright
30 Acres
Vol. 163 Page 273
Rt. Sta. 42+50-48+75.04
Deed
0.625 Acres
- 0.221 Acres in Co. Rd.
0.404 Acres Net

1A
W.W. Stodghill and wife, Willie Stodghill
30.37 Acres
Vol. 163 Page 281
Rt. Sta. 34+62-41+01+50
Deed
0.734
- 0.264 Acres in Co. Rd.
0.470 Acres Net

WILLIAM A. COOSE SURVEY
ABST. NO. 55

J.E. SHERWOOD SURVEY
ABST. NO. 193

J.E. SHERWOOD SURVEY
 ABST. NO. 193

WILLIAM DALTON SURVEY
 ABST. NO. 72

16

William S. Farley and wife,
 Carlene Farley
 5.00 Acres
 Vol. 163 Page 315
 Lt. Sta. 62+45.54 - 65+76
 Deed
 0.287 Acres
 - 0.143 Acres in Co. Rd.
0.144 Acres Net

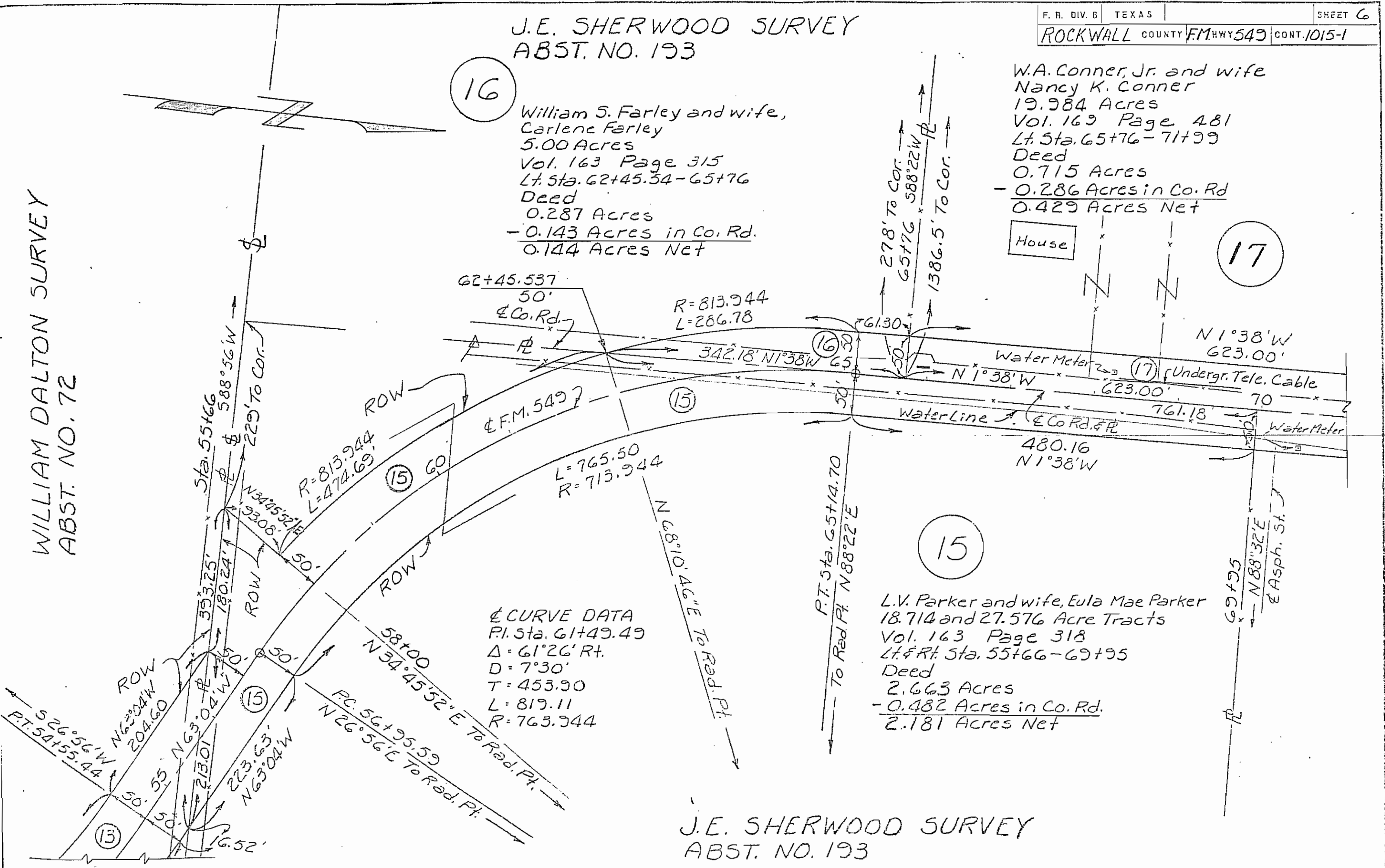
W.A. Conner, Jr. and wife
 Nancy K. Conner
 19.984 Acres
 Vol. 169 Page 481
 Lt. Sta. 65+76 - 71+99
 Deed
 0.715 Acres
 - 0.286 Acres in Co. Rd.
0.429 Acres Net

17

15

L.V. Parker and wife, Eula Mae Parker
 18.714 and 27.576 Acre Tracts
 Vol. 163 Page 318
 Lt. & Rt. Sta. 55+66 - 69+95
 Deed
 2.663 Acres
 - 0.482 Acres in Co. Rd.
2.181 Acres Net

CURVE DATA
 P.I. Sta. 61+49.49
 $\Delta = 61^{\circ}26'$ Rt.
 D = 7'30"
 T = 453.90
 L = 819.11
 R = 763.944



J.E. SHERWOOD SURVEY
 ABST. NO. 193

J.E. SHERWOOD SURVEY
ABST. NO. 193

20

Charles A. Fulcher et al
24.105 Acres
Cause No. 82-67 Vol. 178 Page 886
Lt. Sta. 71+99 - 79+66
Judg.
0.880 Acres
- 0.387 Acres in Co. Rd.
0.493 Acres Net

Harry F. Myers
14.968 Acres
Vol. 163 Page 256
Lt. Sta 79+66 - 84+44
Deed
0.428 Acres
- 0.202 Acres in Co. Rd.
0.226 Acres Net

18

Ranch Estates, Inc.
22.761 & 10.441 Acres
Vol. 163 Page 325
Rt. Sta. 69+95 - 79+56
Deed
1.103 Acres
- 0.485 Acres in Co. Rd.
0.618 Acres Net

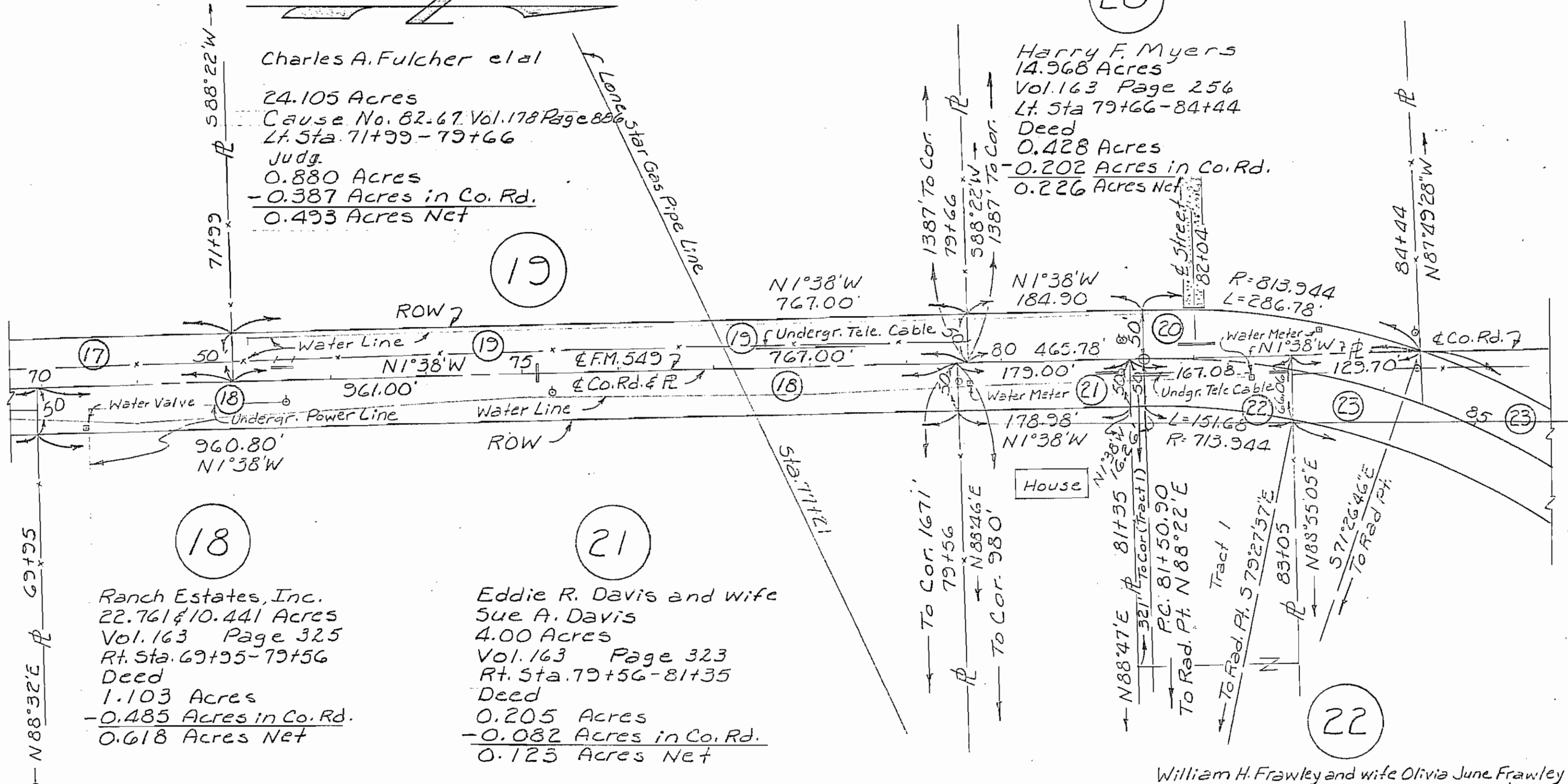
21

Eddie R. Davis and wife
Sue A. Davis
4.00 Acres
Vol. 163 Page 323
Rt. Sta. 79+56 - 81+35
Deed
0.205 Acres
- 0.082 Acres in Co. Rd.
0.123 Acres Net

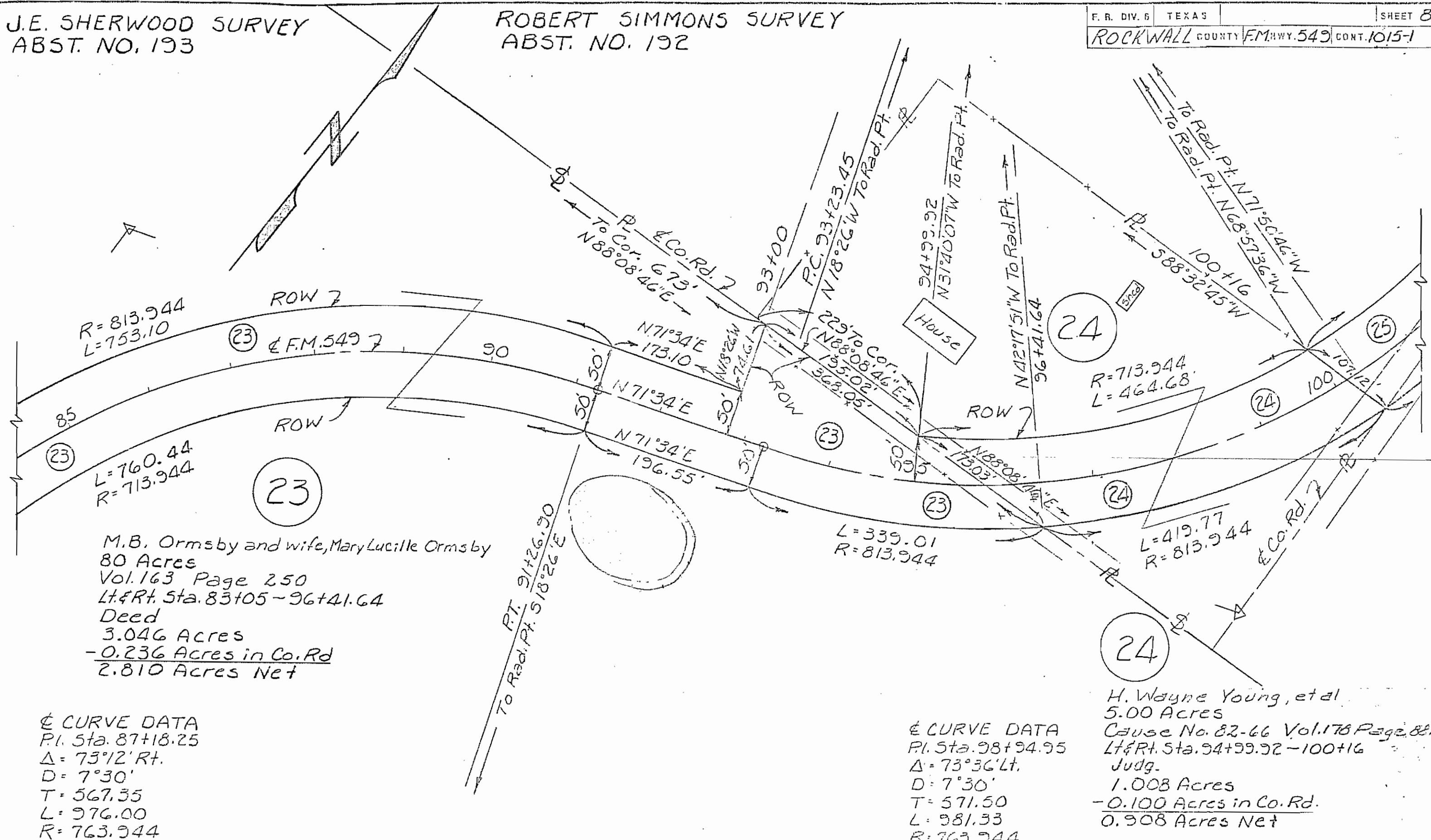
22

William H. Frawley and wife Olivia June Frawley
1.25 Acres (Tract 1)
Vol. 163 Page 244
Rt. Sta. 81+35 - 83+05
Deed
0.210 Acres
- 0.069 Acres in Co. Rd.
0.141 Acres Net

19



J.E. SHERWOOD SURVEY
ABST. NO. 193



R=813.944
L=753.10

L=760.44
R=713.944

M.B. Ormsby and wife, Mary Lucille Ormsby
80 Acres
Vol. 163 Page 250
Lt. & Rt. Sta. 83+05 - 96+41.64
Deed
3.046 Acres
- 0.236 Acres in Co. Rd
2.810 Acres Net

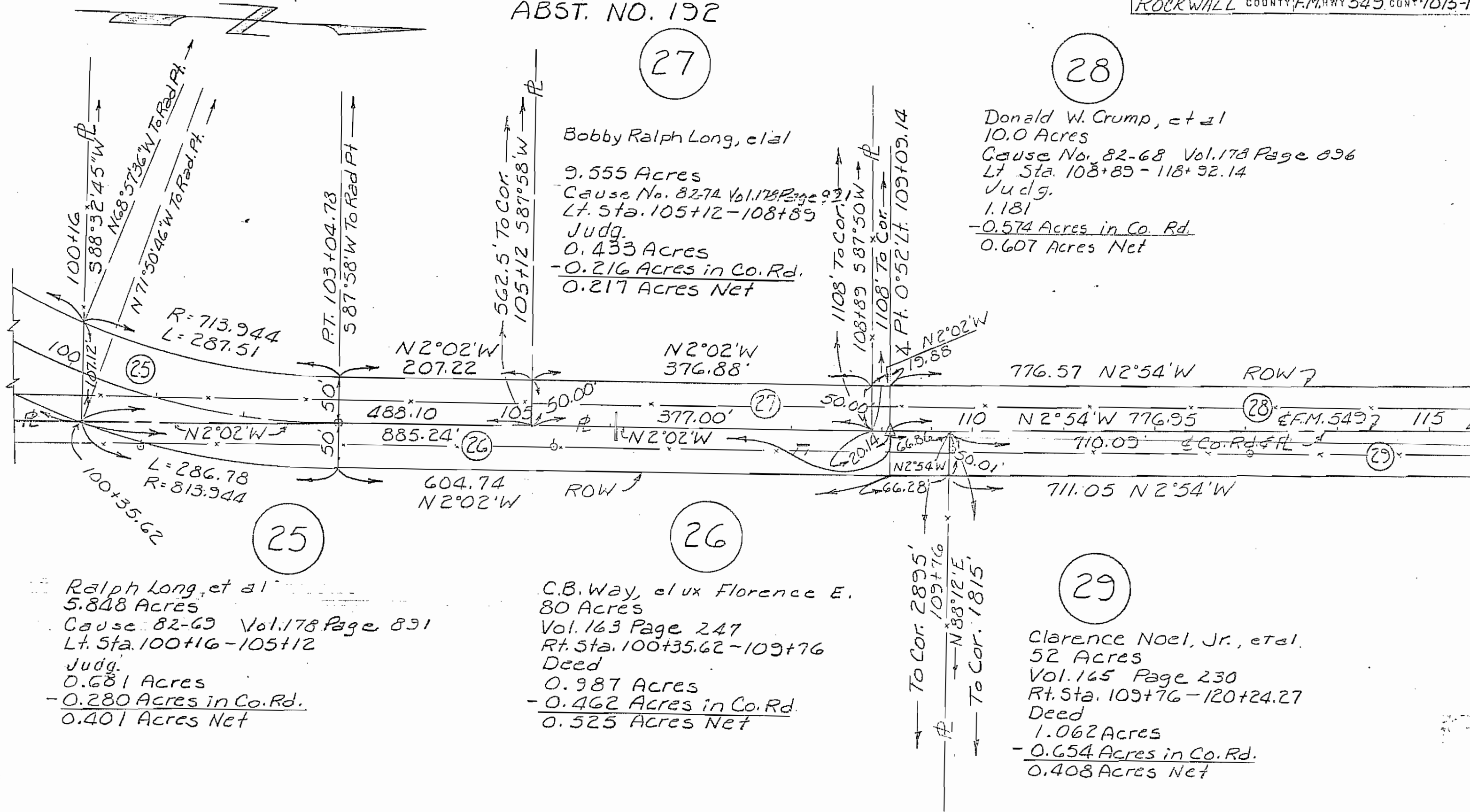
© CURVE DATA
P.I. Sta. 87+18.25
Δ = 73° 12' Rt.
D = 7° 30'
T = 567.35
L = 976.00
R = 763.944

© CURVE DATA
P.I. Sta. 98+94.95
Δ = 73° 36' Lt.
D = 7° 30'
T = 571.50
L = 981.33
R = 763.944

L=419.77
R=813.944

H. Wayne Young, et al
5.00 Acres
Cause No. 82-66 Vol. 176 Page 881
Lt. & Rt. Sta. 94+99.92 - 100+16
Judg.
1.008 Acres
- 0.100 Acres in Co. Rd.
0.908 Acres Net

ROBERT SIMMONS SURVEY
ABST. NO. 192



27

Bobby Ralph Long, et al
9.555 Acres
Cause No. 82-74 Vol. 178 Page 931
Lt. Sta. 105+12 - 108+89
Judg.
0.433 Acres
- 0.216 Acres in Co. Rd.
0.217 Acres Net

28

Donald W. Crump, et al
10.0 Acres
Cause No. 82-68 Vol. 178 Page 896
Lt. Sta. 108+89 - 118+92.14
Judg.
1.181
- 0.574 Acres in Co. Rd.
0.607 Acres Net

25

Ralph Long, et al
5.848 Acres
Cause 82-69 Vol. 178 Page 891
Lt. Sta. 100+16 - 105+12
Judg.
0.681 Acres
- 0.280 Acres in Co. Rd.
0.401 Acres Net

26

C.B. Way, et ux Florence E.
80 Acres
Vol. 163 Page 247
Rt. Sta. 100+35.62 - 109+76
Deed
0.987 Acres
- 0.462 Acres in Co. Rd.
0.525 Acres Net

29

Clarence Noel, Jr., et al.
52 Acres
Vol. 165 Page 230
Rt. Sta. 109+76 - 120+24.27
Deed
1.062 Acres
- 0.654 Acres in Co. Rd.
0.408 Acres Net

