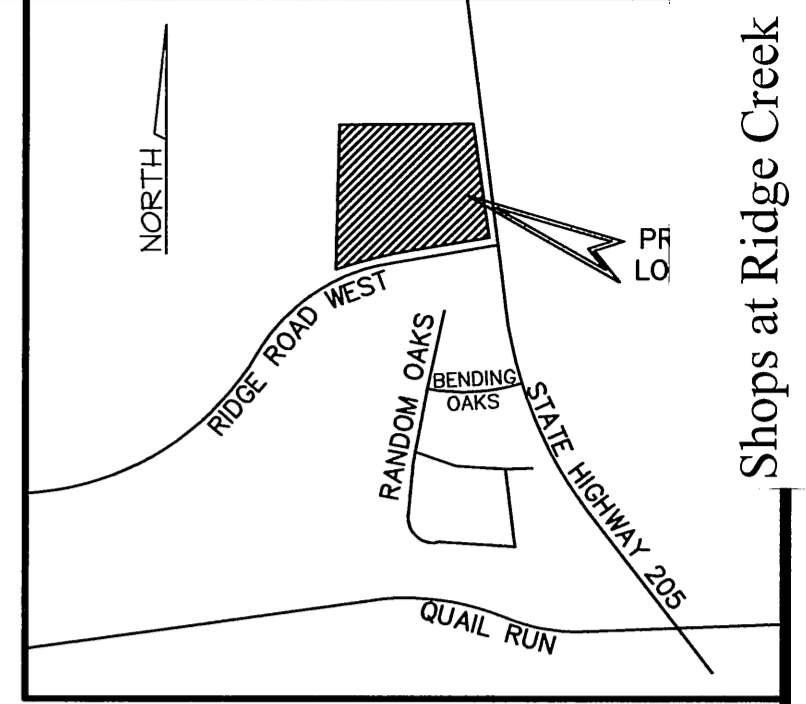
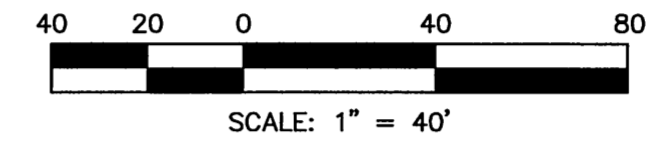


STEPHEN BRADISH, SR.  
VOL. 940, PG. 265 D.R.R.C.T.  
ZONED: AG  
EXISTING RESIDENCE

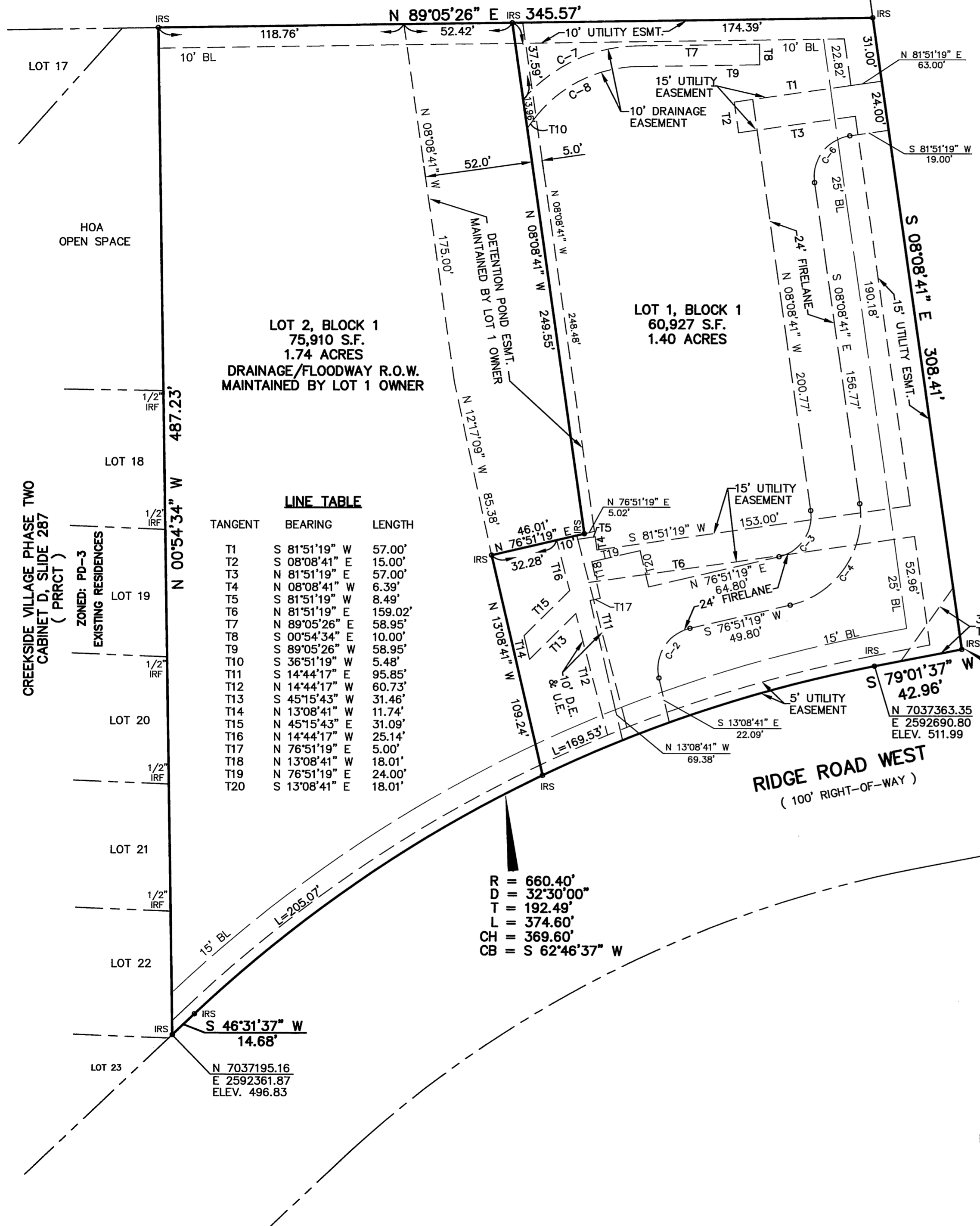


LOCATION MAP  
NO SCALE



LEGEND

- IRF 1/2" IRON ROD FOUND
- IPF 1/2" IRON PIN FOUND
- IRS 1/2" IRON ROD SET
- D.E. DRAINAGE EASEMENT
- U.E. UTILITY EASEMENT



LOT 2, BLOCK 1  
75,910 S.F.  
1.74 ACRES  
DRAINAGE/FLOODWAY R.O.W.  
MAINTAINED BY LOT 1 OWNER

LOT 1, BLOCK 1  
60,927 S.F.  
1.40 ACRES

LINE TABLE

TANGENT	BEARING	LENGTH
T1	S 81°51'19" W	57.00'
T2	S 08°08'41" E	15.00'
T3	N 81°51'19" E	57.00'
T4	N 08°08'41" W	6.39'
T5	S 81°51'19" W	8.49'
T6	N 81°51'19" E	159.02'
T7	N 89°05'26" E	58.95'
T8	S 00°54'34" E	10.00'
T9	S 89°05'26" W	58.95'
T10	S 36°51'19" W	5.48'
T11	S 14°44'17" E	95.85'
T12	N 14°44'17" W	60.73'
T13	S 45°15'43" W	31.46'
T14	N 13°08'41" W	11.74'
T15	N 45°15'43" E	31.09'
T16	N 14°44'17" W	25.14'
T17	N 76°51'19" E	5.00'
T18	N 13°08'41" W	18.01'
T19	N 76°51'19" E	24.00'
T20	S 13°08'41" E	18.01'

CURVE REPORT

CURVE	RADIUS	DELTA	TANGENT	LENGTH	CHORD	BEARING
C-2	20.00'	90°00'00"	20.00'	31.42'	28.28'	N 31°51'19" E
C-3	20.00'	85°00'00"	18.33'	29.67'	27.02'	N 00°00'00" E
C-4	44.00'	85°00'00"	40.32'	65.27'	59.45'	N 34°21'19" E
C-6	20.00'	90°00'00"	20.00'	31.42'	28.28'	N 36°51'19" E
C-7	74.00'	48°49'53"	33.59'	63.07'	61.18'	N 64°40'29" E
C-8	64.00'	52°14'07"	31.38'	58.35'	56.35'	N 62°58'22" E

POINT OF BEGINNING

NOTES:

- BASIS OF BEARING IS THE WEST LINE OF CREEKSIDE VILLAGE PHASE TWO AS RECORDED IN CABINET D, PAGE 287, DRRCT.
- PROPERTY CORNERS AREA TIED TO CITY OF ROCKWALL CONTROL MONUMENT #3.

R = 660.40'  
D = 32°30'00"  
T = 192.49'  
L = 374.60'  
CH = 369.60'  
CB = S 62°46'37" W

FILED FOR RECORD  
ROCKWALL CO., TEXAS  
06 APR 26 PM 3:32  
FAULLETTE BURKS  
CO. CLERK  
BY: \_\_\_\_\_ DEPUTY

FINAL PLAT  
**SHOPS AT RIDGE CREEK**

2 LOTS - 3.141 TOTAL ACRES  
ZONED: PD-3

LOCATED IN THE SAMUEL KING SURVEY, ABSTRACT No. 131  
CITY OF ROCKWALL, ROCKWALL COUNTY, TEXAS

**QUAIL RUN PARTNERS, LTD.** OWNER  
14860 MONTFORT ROAD, SUITE 241 (214) 363-1998  
DALLAS, TEXAS 75254

**LANE'S SOUTHWEST SURVEYING, INC.** SURVEYOR  
2717 MOTLEY DRIVE, SUITE B (972) 681-4442  
MESQUITE, TEXAS 75150

JANUARY 2006

This plat is recorded in Cab. F, Slide 383, Date \_\_\_\_\_

