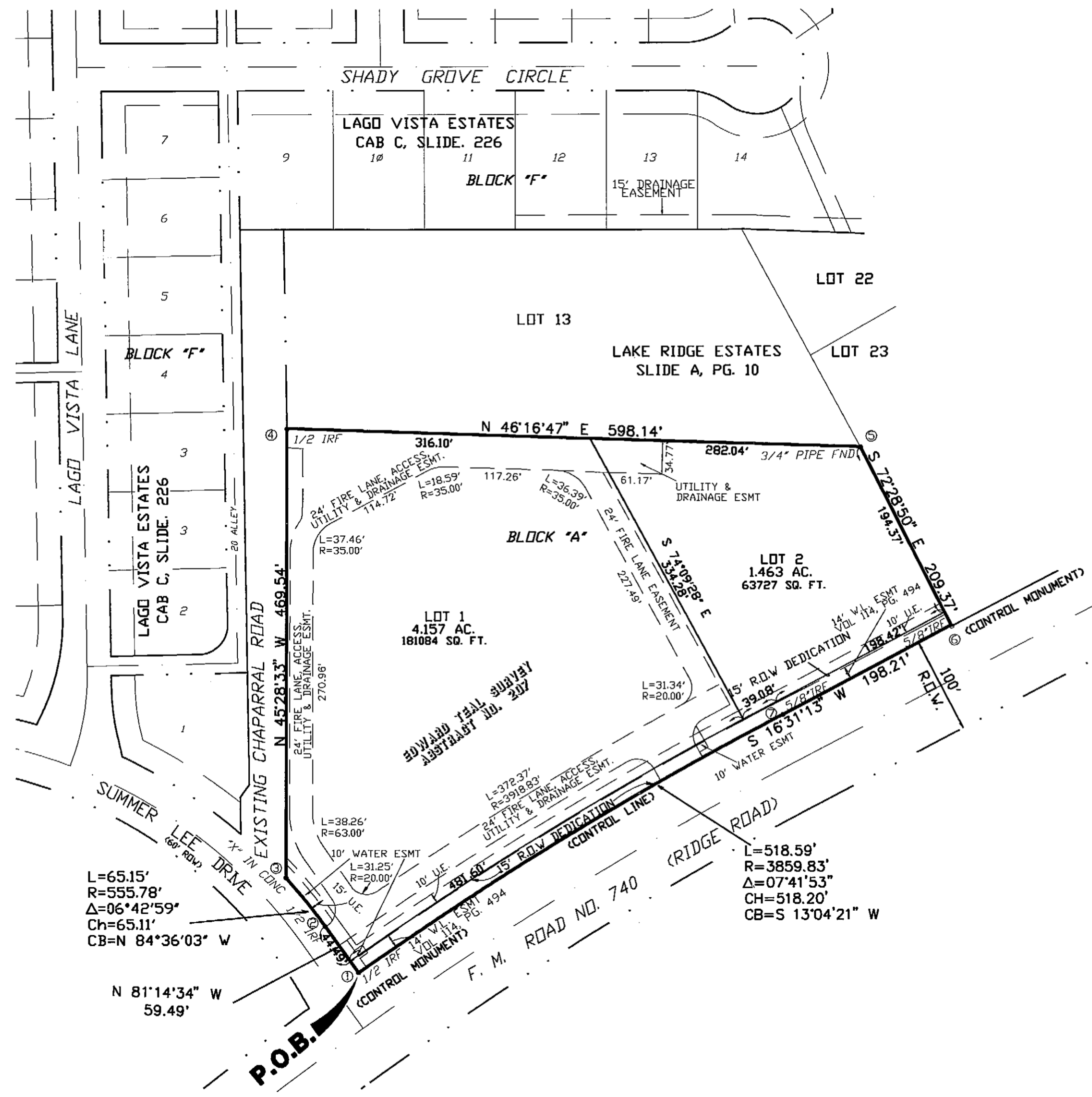


Rockwall Assisted Living Addition



NOTES:

- 1 ACCESS FOR LOT 2 SHALL BE PROVIDED THROUGH LOT 1.
- 2 THE COORDINATES SHOWN ON THIS PLAT ARE GRID N.A.D 83 AND ARE BASED UPON THE THE CITY OF ROCKWALL CONTROL MONUMENT NUMBER 7.
- NORTH---7016837.7643
- EAST---2595455.1800

COORDINATE TABLE

1	N:7011596.676	E:2590378.648
2	N:7011604.626	E:2590319.696
3	N:7011609.532	E:2590254.768
4	N:7011932.425	E:2589913.875
5	N:7012353.878	E:2590338.314
6	N:7012294.526	E:2590539.084
7	N:7012103.564	E:2590486.344

A  
FINAL PLAT  
OF  
**ROCKWALL ASSISTED  
LIVING ADDITION**  
OUT OF THE  
EDWARD TEAL SURVEY, ABSTRACT NO. 207  
IN THE  
CITY OF ROCKWALL, ROCKWALL COUNTY, TEXAS  
**5.867 ACRES / 2 LOTS**  
OWNER/DEVELOPER:  
F.M. 740 ROCKWALL, LTD.  
104 LION STREET, SUITE E.  
DESO, TEXAS 75115  
(972)-223-6241

ENGINEER/SURVEYOR: **Carter Burgess**  
Consultants in Planning, Engineering, Architecture,  
Construction Management and Related Services  
**CARTER & BURGESS, INC.**  
7950 ELMBROOK DRIVE, SUITE 250  
DALLAS, TX 75247-4961  
(214) 638-0145

05-06-98

PAGE 1 OF 2 THIS PLAT FILED IN D. 87-88

FILED FOR RECORD  
ROCKWALL, CO., TEXAS  
98 MAY 14 PM 3:16  
LAURETTE BURKS  
CO. CLERK  
BY: CB DEPUTY