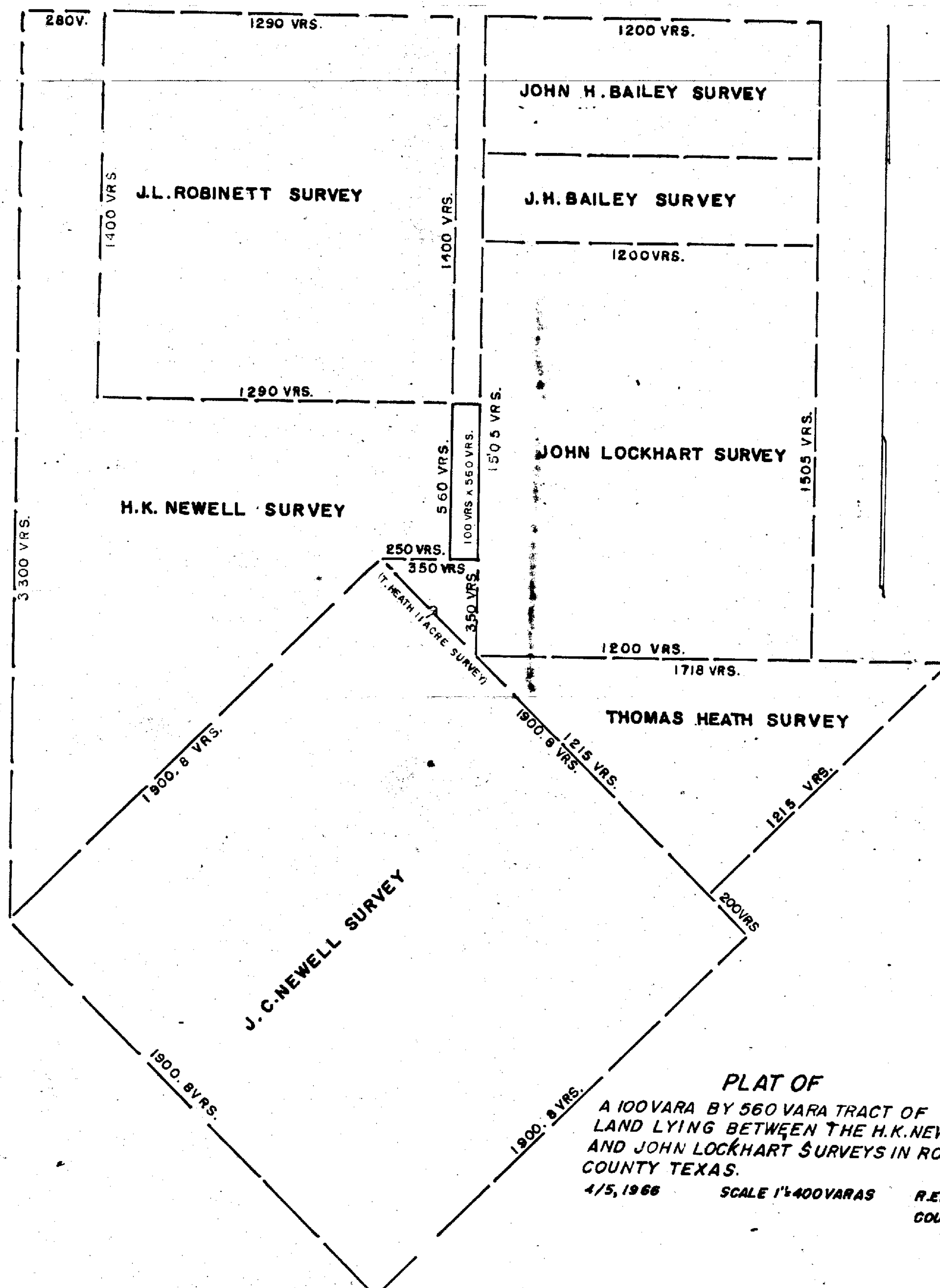


47-A

47-A



PLAT OF
 A 100VARA BY 560 VARA TRACT OF
 LAND LYING BETWEEN THE H.K. NEWELL
 AND JOHN LOCKHART SURVEYS IN ROCKWALL
 COUNTY TEXAS.
 4/5, 1966 SCALE 1"=400VARAS
 R.E.L. HALFORD
 COUNTY SURVEYOR

FILED

9th day of April 1966
 Elmer A. Payne, Clerk of County
 Court, Rockwall County, Texas
 By: 10:15 A.M. Deputy