

Scale 1" = 30'

BASIS OF BEARINGS
FILED PLAT
CATFISH ADDITION
(CABINET A, PAGE 270, M.R.R.C.T.)

LEGEND

B.L.A. BOUNDARY LINE AGREEMENT (VOL. 231, PG. 186)
D.R.R.C.T. Dead Records, Rockwall County, Texas
I.R.F. IRON ROD FOUND
I.R.S. IRON ROD SET
I.R.W.C.F. IRON ROD w/CAP FOUND "LYN DAVIS R.P.L.S. 1160"
M.R.R.C.T. Map Records, Rockwall County, Texas
NO. NUMBER

STATE PLANE COORDINATES

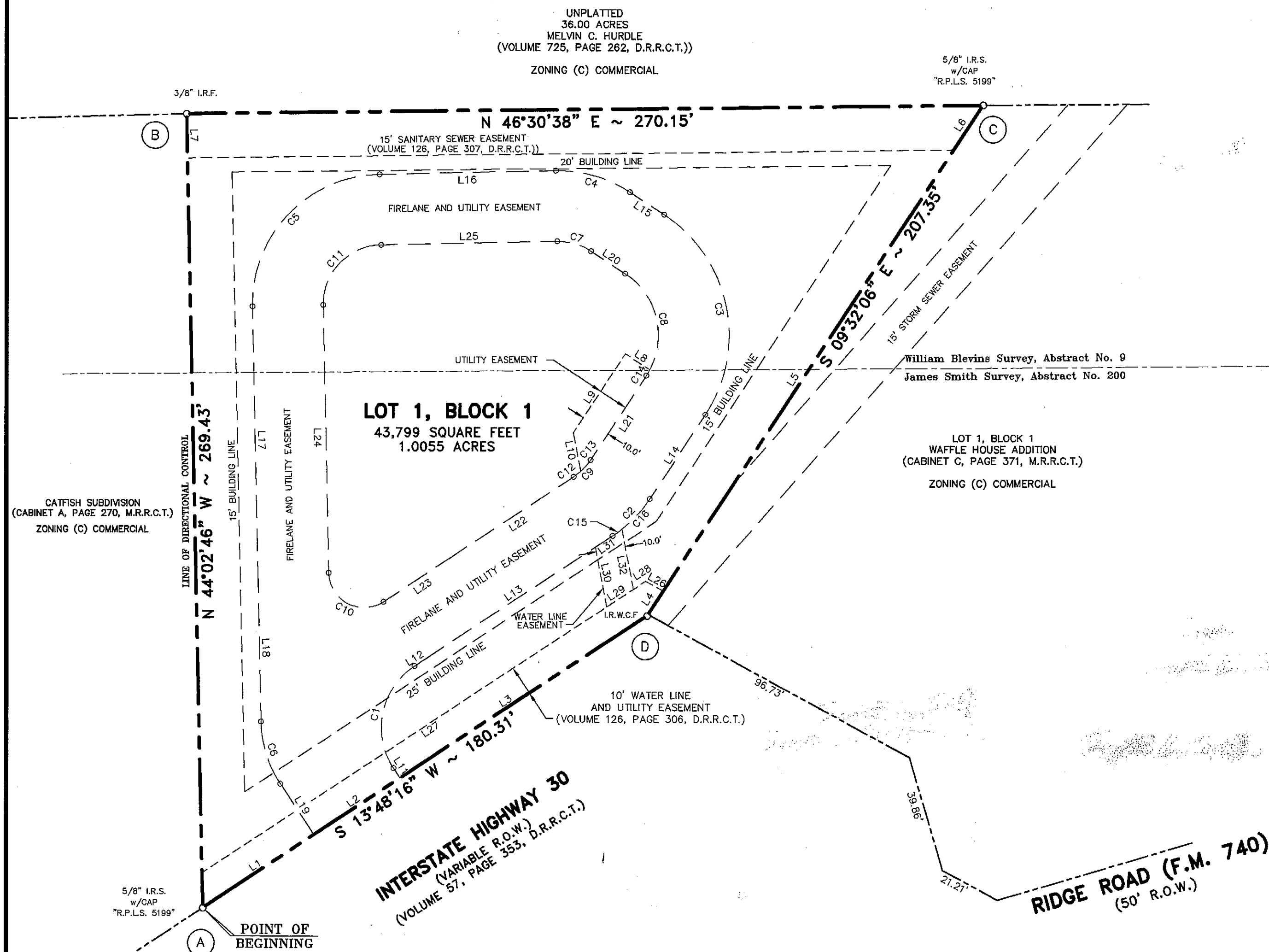
BASIS FOR STATE PLANE COORDINATES CITY OF ROCKWALL MONUMENTS No. 5 AND 7		
	"Y"	"X"
(A)	7015598.6654	2591439.1599
(B)	7015790.0297	2591249.4915
(C)	7015978.3319	2591443.2056
(D)	7015774.2807	2591480.0447

EASEMENT CURVE DATA

NUMBER	DELTA	RADIUS	LENGTH	CHORD BEARING	CHORD
C1	90°00'00"	25.00	39.27	N 31°11'44" W	35.36
C2	23°20'22"	44.00	17.92	N 02°08'05" E	17.80
C3	90°00'00"	49.00	76.97	N 54°32'06" W	69.30
C4	34°30'40"	44.00	26.50	S 63°12'34" W	26.10
C5	90°00'00"	44.00	69.12	S 00°57'14" W	62.23
C6	32°08'58"	40.00	22.44	S 60°07'15" E	22.15
C7	34°30'40"	20.00	12.05	N 63°12'34" E	11.87
C8	90°00'00"	25.00	39.27	S 54°32'06" E	35.36
C9	23°20'22"	20.00	8.15	S 02°08'05" W	8.09
C10	122°08'58"	12.00	25.58	S 74°52'45" W	21.01
C11	90°00'00"	20.00	31.42	N 00°57'14" E	28.28
C12	08°42'41"	20.00	3.04	N 09°26'55" E	3.04
C13	00°32'49"	533.38	5.09	N 02°13'16" W	5.09
C14	05°16'40"	25.00	2.30	N 12°10'26" W	2.30
C15	05°04'09"	44.00	3.89	N 11°16'12" E	3.89
C16	01°29'49"	534.81	13.97	N 00°23'59" W	13.97

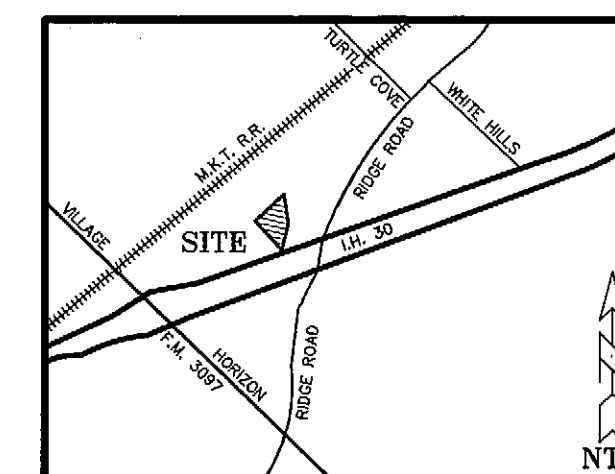
EASEMENT LINE DATA

NUMBER	DIRECTION	DISTANCE
L1	N 13°48'16" E	45.00'
L2	N 13°48'16" E	35.00'
L3	N 13°48'16" E	100.31'
L4	N 09°32'06" W	10.03'
L5	N 09°32'06" W	179.23'
L6	N 09°32'06" W	18.08'
L7	S 45°38'13" E	15.01'
L8	S 80°27'54" W	9.89'
L9	S 09°32'06" E	32.03'
L10	S 53°41'44" E	13.42'
L11	N 76°11'44" W	4.00'
L12	N 13°48'16" E	3.18'
L13	N 13°48'16" E	77.25'
L14	N 09°32'06" W	34.31'
L15	S 80°27'54" W	13.85'
L16	S 45°57'14" W	59.88'
L17	S 44°02'46" E	90.95'
L18	S 44°02'46" E	49.92'
L19	S 76°11'44" E	20.61'
L20	N 80°27'54" E	13.85'
L21	S 09°32'06" E	34.31'
L22	S 13°48'16" W	49.60'
L23	S 13°48'16" W	27.65'
L24	N 44°02'46" W	90.95'
L25	N 45°57'14" E	59.88'
L26	S 75°47'55" W	6.82'
L27	S 13°48'16" W	180.03'
L28	S 13°48'16" W	4.95'
L29	S 13°48'16" W	10.82'
L30	N 53°41'44" W	20.57'
L31	N 13°48'16" E	7.01'
L32	S 53°41'44" E	20.75'



William Blevins Survey, Abstract No. 9
James Smith Survey, Abstract No. 200

LOT 1, BLOCK 1
WAFFLE HOUSE ADDITION
(CABINET C, PAGE 371, M.R.R.C.T.)
ZONING (C) COMMERCIAL



VICINITY MAP

FINAL PLAT
IHOP No. 9448 ADDITION
out of
WILLIAM BLEVINS SURVEY, ABSTRACT NO. 9
and
JAMES SMITH SURVEY, ABSTRACT NO. 200
CITY OF ROCKWALL, ROCKWALL COUNTY, TEXAS

Date of Survey: 12/03/98 Job No. 8006-01 Drawn by: K. Eakles SHEET 1 OF 2

HCE Hickman Consulting Engineers, Inc.
1315 E 19th Street, Suite 2A
Plano, Texas 75074
(972) 509-1544 • (800) 579-4367
FAX (972) 578-9644
E MAIL: HCEI@AIRMAIL.NET
Engineers Planners Surveyors

D-199/200

THIS PLAT HAS 1 LOT AND 1 BLOCK
CONTAINING 1.0055 ACRES

99 OCT -5 AM 10:45
 ROCKWALL CO. CLERK
 JUDITH BURKES
 CO. CLERK
 DEPUTY

IHOP No. 9448

26