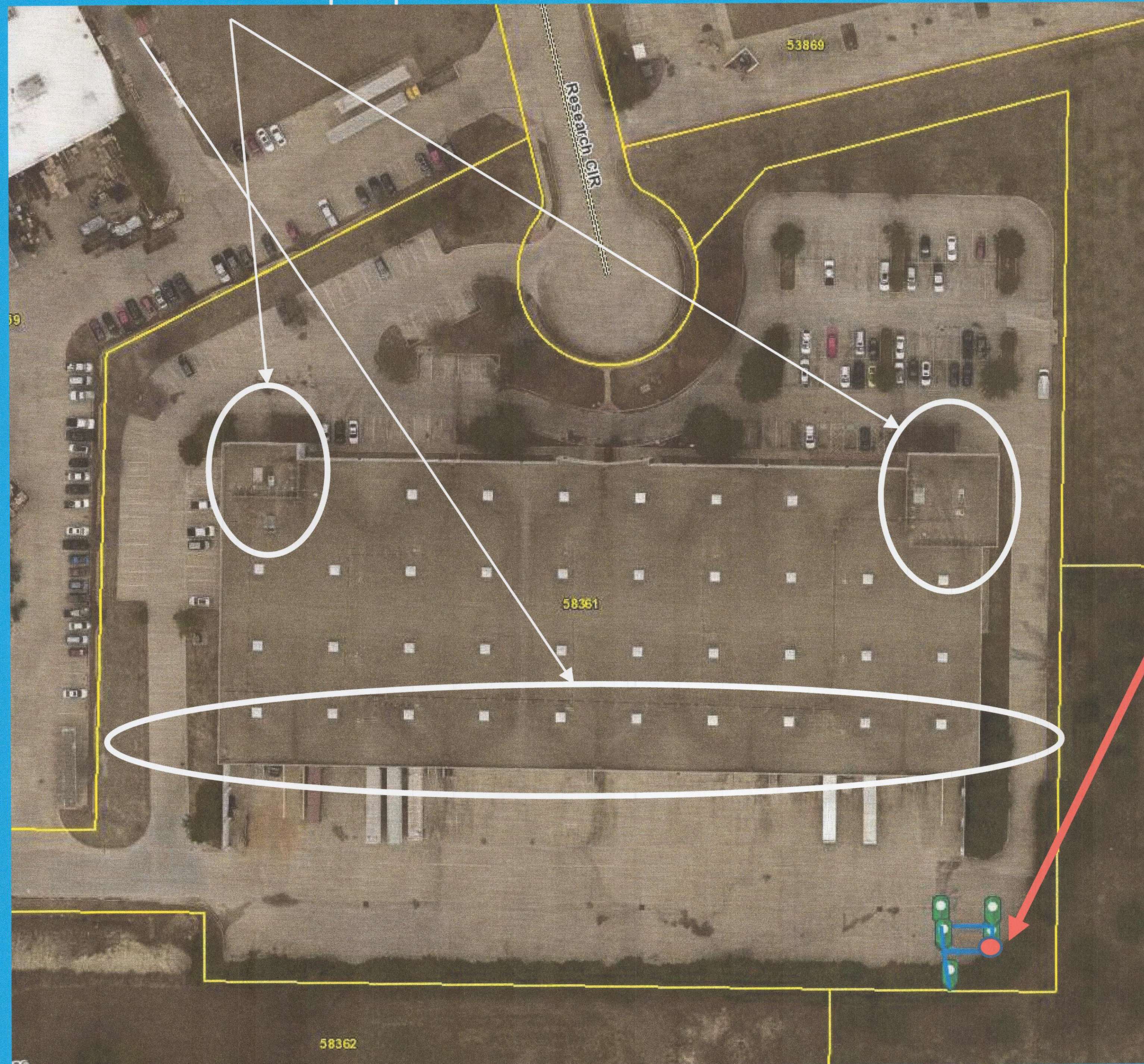


Tornado Shelter Placement (SP2022-023)

(Rockwall CAD Map Search Measuring Tool)



Concentrations of people

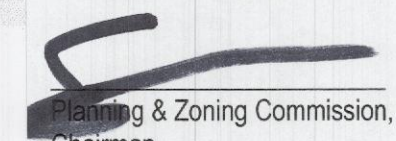
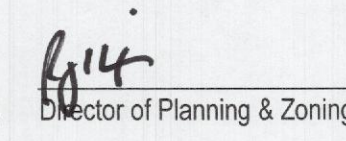


- Shelter size (56' L x 10' W)
- Capacity (112 People)
- Site Headcount (90 People)
- Have property owner approval
- Warehouse is concrete tilt-wall; shelters must be away from walls

Shelter Placement (Cornered on Red Dot)

- 40' West of East Property Line
- 20' North of South Property Line

APPROVED:
I hereby certify that the above and foregoing site plan for
development in the City of Rockwall, Texas, was approved by the
Planning & Zoning Commission on the 12 day of July,
2022.

 Chairman
 Director of Planning & Zoning

