

$\Delta=15^{\circ}21'28''$
 $R=750.00'$
 $A=201.03'$
 $CB=N 10^{\circ}02'09'' W$

$\Delta=18^{\circ}13'08''$
 $R=750.00'$
 $A=238.48'$
 $CB=N 26^{\circ}49'27'' W$

$\Delta=20^{\circ}54'51''$
 $R=50.00'$
 $A=18.25'$
 $CB=N 78^{\circ}48'21'' W$

Number	Size	Type
537	21"	Ash
538	21"	Ash
539	18"	Ash
540	18"	Ash
541	8" 10"	Elm
542	6" 8"	Elm
543	12"	Ash
544	20"	Ash
545	14"	Ash
546	10"	Ash
547	12" 12"	Ash
548	7" 9"	Ash
549	15"	Ash
552	8"	Chinaberry
553	12"	Elm
554	16"	Bois d arc
555	15"	Elm
556	14"	Hackberry
557	12" 12"	Cedar
558	14"	Hackberry
559	14"	Hackberry
560	40"	Cedar
561	12"	Hackberry
562	10"	Hackberry
563	12" 20"	Bois d arc
564	12"	Elm
565	10" 12"	Ash
566	14"	Ash
567	14"	Ash
568	6"	Ash
569	14"	Ash
570	8"	Ash
571	16"	Ash
572	14"	Ash
573	10"	Hackberry
574	8" 10" 10"	Live Oak
575	16" 20" 20"	Oak
576	20"	Pecan
577	20"	Oak
578	20" 20" 20"	Oak
579	20"	Pecan
580	15"	Oak
581	14"	Oak
582	17"	Oak
583	6"	Oak
584	16"	Live Oak
585	20"	Live Oak
586	15"	Live Oak
587	15"	Pecan
588	8" 8"	Pecan

OWNER
ST BENEDICT'S ANGLICAN CHURCH
 1500 SUNSET HILL
 ROCKWALL, TEXAS 75087

PLANNING & ZONING CHAIRMAN
 DATE _____
 PLANNING DIRECTOR
 DATE _____

SITE DATA SUMMARY:
 ZONING: SF-10 WITH SUP Z2021-020
 PROPOSED USE: HOUSE OF WORSHIP
 EXISTING BUILDING SQUARE FOOTAGE: 5976 SF
 PROPOSED NET BUILDING SQUARE FOOTAGE W/ RENNOVATIONS: 7125 SF
 FUTURE CHAPEL BUILDING ADDITION 2442 SF
 TOTAL BUILDING SQUARE FOOTAGE (PROPOSED AND FUTURE): 9567 SF
 BUILDING HEIGHT: 28 FT
 TOTAL LOT AREA 7.45 ACRES (324,522.0 SF) BUILDING LOT COVERAGE: 2.9%
 PARKING SPACES REQUIRED: CHAPEL 175 SEATS, 4:1 RATIO, 175 = 44 SPACES
 HANDICAP PARKING REQUIRED: 2
 TOTAL PARKING SPACES PROVIDED: 46
 HANDICAP PARKING PROVIDED: 4
 INTERIOR LANDSCAPING REQUIRED: 15%
 INTERIOR LANDSCAPING PROVIDED: 83.5%
 TOTAL SQUARE FOOTAGE OF IMPERVIOUS SURFACE=53,056SF=16.3% OF TOTAL LOT AREA
 PARKING SPACES 9'X20'
 PROPOSED 24' FIRE LANE/ACCESS EASEMENT TO BE PAVED
 PER CITY OF ROCKWALL STANDARDS
 EXTERIOR PROPOSED BUILDING SIDE LIGHTING TO BE WALL PACK
 WITH DOWN CAST LOW LIGHT ILLUMINATION (SEE PHOTOMETRIC SHEET)
 DRIVEWAY / PARKING BOLLARDS TO BE DOWN CAST LOW LIGHT
 ILLUMINATION (SEE PHOTOMETRIC SHEET)

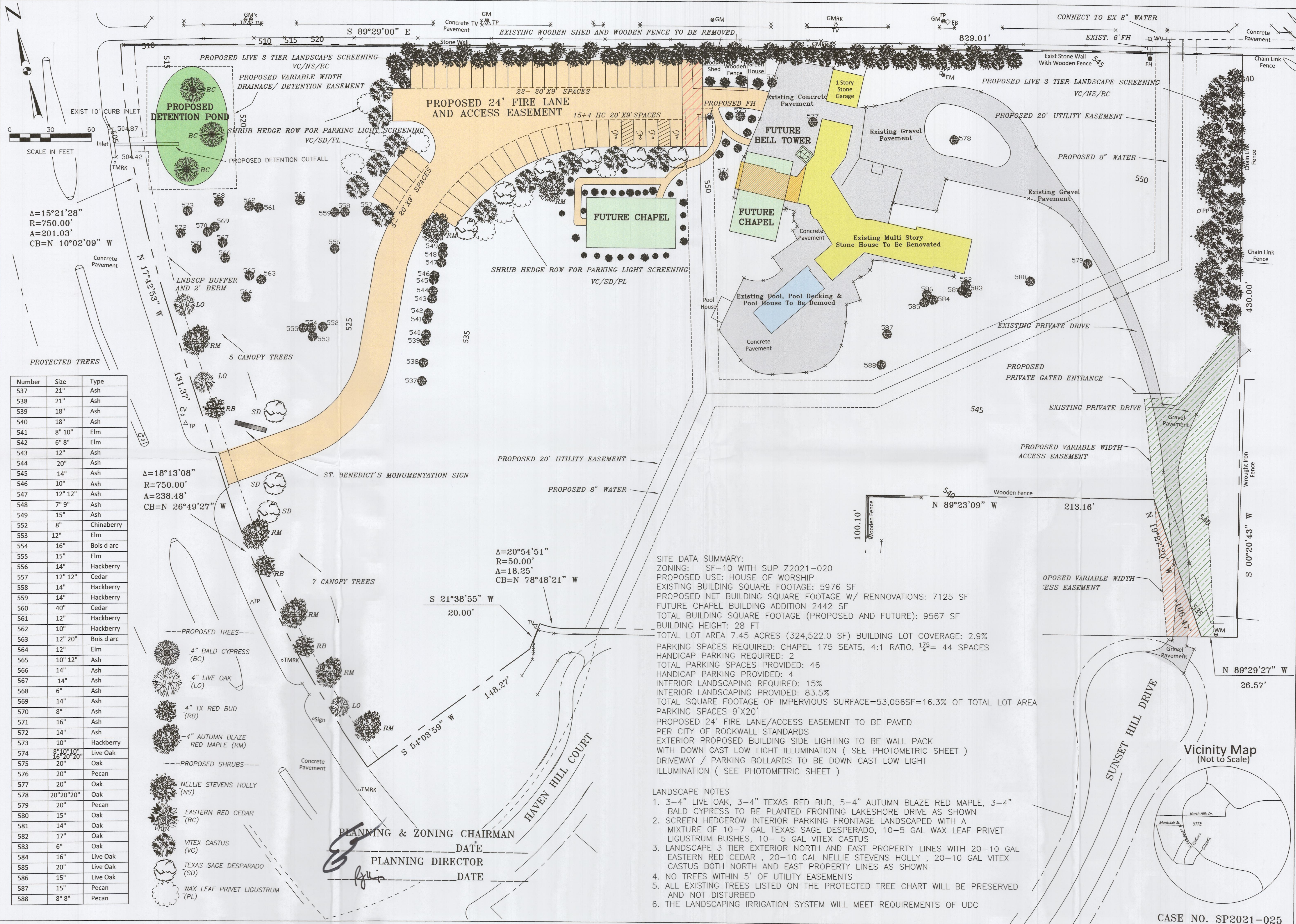


THE SEAL APPEARING ON THIS DOCUMENT WAS AUTHORIZED BY W.L. DOUPHRATE A TEXAS P.E. LICENSE NO. 80102 EXPIRES ON DATE: APRIL 23, 2021.

DOUPHRATE & ASSOCIATES, INC.
 ENGINEERING PROJECT MANAGEMENT SURVEYING
 2235 RIDGE RD., # 200 ROCKWALL, TEXAS 75087
 PHONE: (972)771-9004 FAX: (972)771-9005

SITE PLAN
ST. BENEDICT'S ANGLICAN CHURCH PROPERTY
 1500 SUNSET HILL DR
 CITY OF ROCKWALL
 ROCKWALL COUNTY, TEXAS

REVISION
 CHECKED **W.L.D.**
 DRAWN **G.C.W.**
 SCALE 1"=50' H 1"=20' V
 DATE **APRIL 23, 2021**
 PROJECT **2007 SITE PL.**
 CASE NO. SP2021-025
 20



$\Delta=15^{\circ}21'28''$
 $R=750.00'$
 $A=201.03'$
 $CB=N 10^{\circ}02'09'' W$

$\Delta=18^{\circ}13'08''$
 $R=750.00'$
 $A=238.48'$
 $CB=N 26^{\circ}49'27'' W$

$\Delta=20^{\circ}54'51''$
 $R=50.00'$
 $A=18.25'$
 $CB=N 78^{\circ}48'21'' W$

SITE DATA SUMMARY:
 ZONING: SF-10 WITH SUP Z2021-020
 PROPOSED USE: HOUSE OF WORSHIP
 EXISTING BUILDING SQUARE FOOTAGE: 5976 SF
 PROPOSED NET BUILDING SQUARE FOOTAGE W/ RENOVATIONS: 7125 SF
 FUTURE CHAPEL BUILDING ADDITION 2442 SF
 TOTAL BUILDING SQUARE FOOTAGE (PROPOSED AND FUTURE): 9567 SF
 BUILDING HEIGHT: 28 FT
 TOTAL LOT AREA 7.45 ACRES (324,522.0 SF) BUILDING LOT COVERAGE: 2.9%
 PARKING SPACES REQUIRED: CHAPEL 175 SEATS, 4:1 RATIO, $\frac{175}{4} = 44$ SPACES
 HANDICAP PARKING REQUIRED: 2
 TOTAL PARKING SPACES PROVIDED: 46
 HANDICAP PARKING PROVIDED: 4
 INTERIOR LANDSCAPING REQUIRED: 15%
 INTERIOR LANDSCAPING PROVIDED: 83.5%
 TOTAL SQUARE FOOTAGE OF IMPERVIOUS SURFACE=53,056SF=16.3% OF TOTAL LOT AREA
 PARKING SPACES 9'X20'
 PROPOSED 24' FIRE LANE/ACCESS EASEMENT TO BE PAVED
 PER CITY OF ROCKWALL STANDARDS
 EXTERIOR PROPOSED BUILDING SIDE LIGHTING TO BE WALL PACK
 WITH DOWN CAST LOW LIGHT ILLUMINATION (SEE PHOTOMETRIC SHEET)
 DRIVEWAY / PARKING BOLLARDS TO BE DOWN CAST LOW LIGHT
 ILLUMINATION (SEE PHOTOMETRIC SHEET)

- LANDSCAPE NOTES**
- 3-4" LIVE OAK, 3-4" TEXAS RED BUD, 5-4" AUTUMN BLAZE RED MAPLE, 3-4" BALD CYPRESS TO BE PLANTED FRONTING LAKESHORE DRIVE AS SHOWN
 - SCREEN HEDGEROW INTERIOR PARKING FRONTAGE LANDSCAPED WITH A MIXTURE OF 10-7 GAL TEXAS SAGE DESPARADO, 10-5 GAL WAX LEAF PRIVET LIGUSTRUM BUSHES, 10- 5 GAL VITEX CASTUS
 - LANDSCAPE 3 TIER EXTERIOR NORTH AND EAST PROPERTY LINES WITH 20-10 GAL EASTERN RED CEDAR , 20-10 GAL NELLIE STEVENS HOLLY , 20-10 GAL VITEX CASTUS BOTH NORTH AND EAST PROPERTY LINES AS SHOWN
 - NO TREES WITHIN 5' OF UTILITY EASEMENTS
 - ALL EXISTING TREES LISTED ON THE PROTECTED TREE CHART WILL BE PRESERVED AND NOT DISTURBED
 - THE LANDSCAPING IRRIGATION SYSTEM WILL MEET REQUIREMENTS OF UDC

Number	Size	Type
537	21"	Ash
538	21"	Ash
539	18"	Ash
540	18"	Ash
541	8" 10"	Elm
542	6" 8"	Elm
543	12"	Ash
544	20"	Ash
545	14"	Ash
546	10"	Ash
547	12" 12"	Ash
548	7" 9"	Ash
549	15"	Ash
552	8"	Chinaberry
553	12"	Elm
554	16"	Bois d arc
555	15"	Elm
556	14"	Hackberry
557	12" 12"	Cedar
558	14"	Hackberry
559	14"	Hackberry
560	40"	Cedar
561	12"	Hackberry
562	10"	Hackberry
563	12" 20"	Bois d arc
564	12"	Elm
565	10" 12"	Ash
566	14"	Ash
567	14"	Ash
568	6"	Ash
569	14"	Ash
570	8"	Ash
571	16"	Ash
572	14"	Ash
573	10"	Hackberry
574	8" 10" 16" 20"	Live Oak
575	20"	Oak
576	20"	Pecan
577	20"	Oak
578	20" 20" 20"	Oak
579	20"	Pecan
580	15"	Oak
581	14"	Oak
582	17"	Oak
583	6"	Oak
584	16"	Live Oak
585	20"	Live Oak
586	15"	Live Oak
587	15"	Pecan
588	8" 8"	Pecan

- PROPOSED TREES---
- 4" BALD CYPRESS (BC)
 - 4" LIVE OAK (LO)
 - 4" TX RED BUD (RB)
 - 4" AUTUMN BLAZE RED MAPLE (RM)
- PROPOSED SHRUBS---
- NELLIE STEVENS HOLLY (NS)
 - EASTERN RED CEDAR (RC)
 - VITEX CASTUS (VC)
 - TEXAS SAGE DESPARADO (SD)
 - WAX LEAF PRIVET LIGUSTRUM (PL)

PLANNING & ZONING CHAIRMAN _____ DATE _____
 PLANNING DIRECTOR _____ DATE _____



THE SEAL APPEARING ON THIS DOCUMENT IS AUTHORIZED BY THE STATE OF TEXAS, ROCKWALL COUNTY, TEXAS, LICENSE NO. 60102, EXPIRES ON DATE: APRIL 23, 2021.

DOUPHRATE & ASSOCIATES, INC.
 ENGINEERING PROJECT MANAGEMENT SURVEYING
 2235 RIDGE RD., # 200 ROCKWALL, TEXAS 75087
 PHONE: (972)771-9004 FAX: (972)771-9005

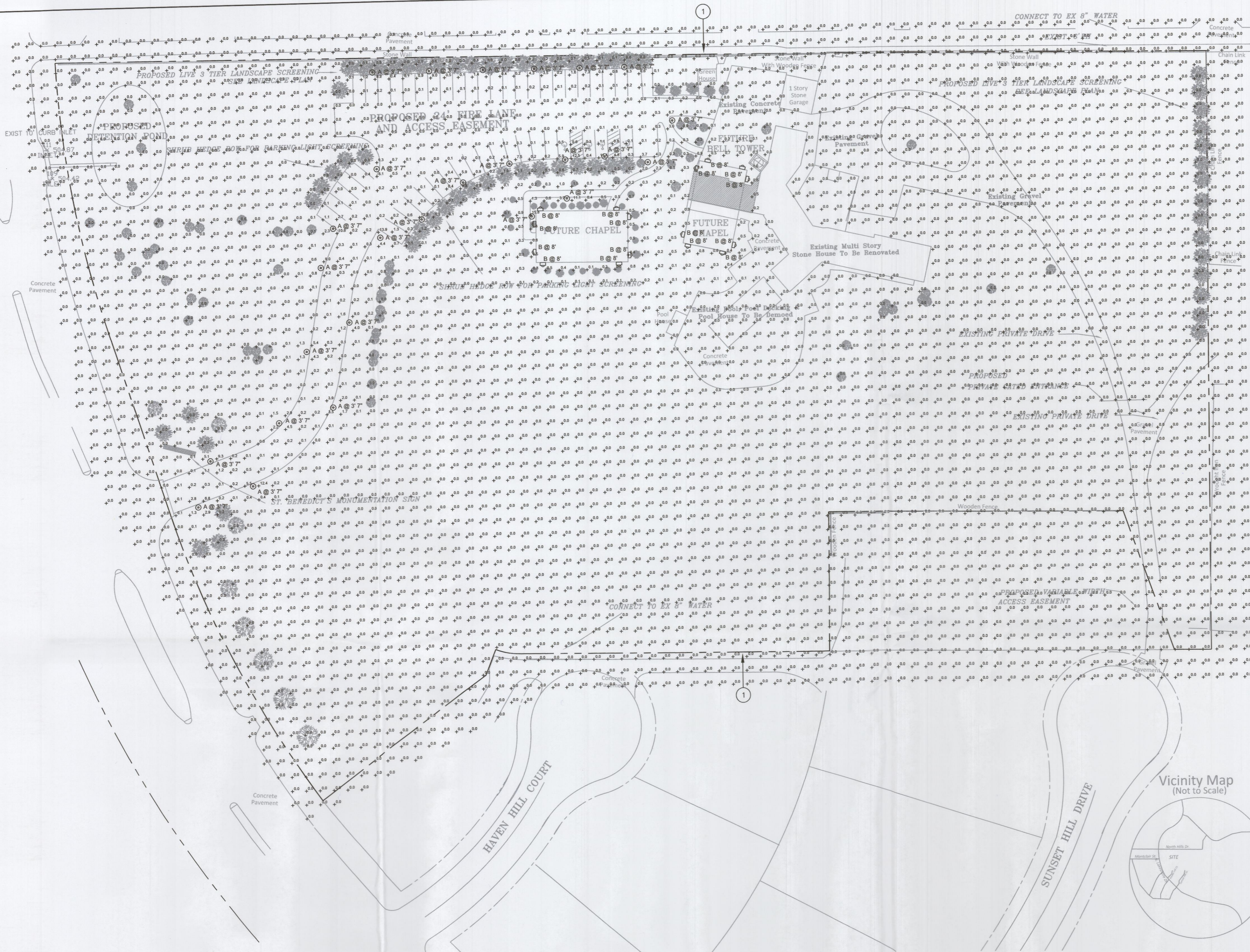
LANDSCAPING PLAN
ST. BENEDICT'S ANGLICAN CHURCH PROPERTY
 CITY OF ROCKWALL
 ROCKWALL COUNTY, TEXAS

REVISION	DATE
WLD.	
QCW.	
APRIL 23, 2021	
2007 SITE PL	
PROJECT	
20	

CASE NO. SP2021-025

NOTES BY SYMBOL (X) :

1. PROPERTY LINE.



KIM LIGHTING

Type:
Job:
Catalog number:

BNB1 LED
Bounce Bollard
revision 12/14/17 • BNB1_led_spec.pdf

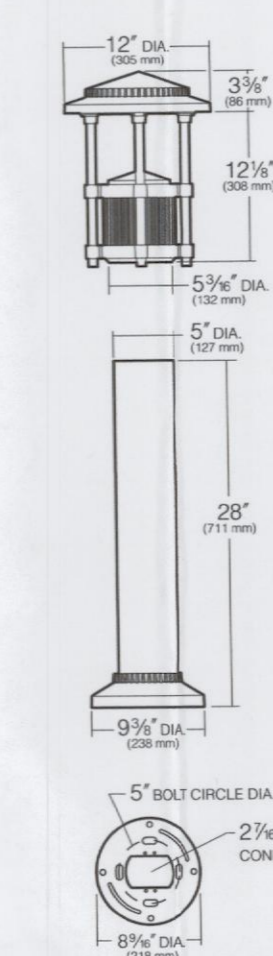
Approvals:

Date:
Page: 1 of 4

Fixture Electrical Module Luminaire Finish Options
See page 2 See page 3

Specifications

BNB1 LED
18, 27 or 36 LED



Hood and Lens Frame: Die-cast, low copper ($\le 0.6\%$ Cu) aluminum alloy with stainless steel hinge. Hood is opened by loosening one stainless steel captive button-head socket cap screw. $\frac{3}{16}$ " thick clear flat tempered glass lens seals against the lens frame by a one-piece molded silicone gasket. Lens frame seals against the hood by a one-piece extruded and vulcanized silicone gasket.

Body Support: Die-cast, low copper ($\le 0.6\%$ Cu) aluminum alloy flange compress a ribbed extruded aluminum chamber. The four heavy wall extruded aluminum support rods are mechanically fastened to the lens frame with stainless steel fasteners. The support rods are held in position through die-cast arms and mechanically fastened at the bottom with a custom aluminum bolt. The electrical wiring is channeled through a support rod with a brass bushing.

Body Cap: Die-cast, low copper ($\le 0.6\%$ Cu) aluminum, retained by two captive stainless steel screws. Optional matte black finish to eliminate bounce light. See page 3.

Shaft: One-piece aluminum extrusion, 1.25" minimum wall thickness and two internal $\frac{9}{16}$ "-16 mounting rods sandwich shaft between base and hood.

Anchor Base Plate: A heavy cast aluminum anchor base is provided for mounting to the four $\frac{3}{4}$ " x 10 " x 2 " zinc plated J-bolts, each with two nuts and washers. A rigid pressed board template is provided to secure the anchor bolts during concrete pour (5" B.C.D.).

Electrical Module: Factory mounted to a rigid harness attached to the anchor base. A total of 27 mill power LED emitters configured in a rectangular array comprised together as a module. Two (2) modules for Type I version; three (3) modules for Type III version; and four (4) modules for Type V version. Available in 5000m Amber, 3000K, 4000K and 5100K color temperatures.

LED Driver: Universal voltage from 120V to 277V with a $\pm 10\%$ tolerance, 40Y starting temperature. All drivers are Underwriters Laboratories recognized.

Finish: Each luminaire receives a fade and abrasion resistant, electrostatically applied, thermally cured, triglycidyl isocyanurate (TGIC) polyester powdercoat finish. Standard colors include (BL) Black, (DB) Dark Bronze, (WH) White, (PS) Platinum Silver, (SC) Stealth Gray, (LG) Light Gray, and (CC) Custom Color (Include RAL).

Listed to: UL 1598 Standard for Luminaires - UL 8750 Standard for Safety for Light Emitting Diode (LED) Equipment for use in Lighting Products and CSA C22.2/250.0 Luminaires. RoHS compliant. Meets Buy American provisions within ARRA.

Warranty: Kim Lighting warrants Bollard LED products sold by Kim Lighting to be free from defects in material and workmanship for (i) a period of five (5) years for metal parts, (ii) a period of five (5) years for exterior housing paint finishes, (iii) a period of five (5) years for LED Light Engines and, (iv) a period of five (5) years for LED power components (driver, surge protector and Lifeshield® device), from the date of sale of such goods to the buyer as specified in Kim Lighting shipment documents for each product.

CAUTION: Fixtures must be grounded in accordance with national, state and/or local electrical codes. Failure to do so may result in serious personal injury.



© 2014 KIM LIGHTING • 16555 EAST GALE AVENUE, CITY OF INDUSTRY, CA 91745-1788 • TEL: 626/968-5666 • FAX: 626/968-5716

DESCRIPTION

The Arbor Wall Sconce shares the same architectural appearance as the Arbor post top and Bollard luminaires to provide a unique coordinated look enhancing any architectural or pedestrian setting. WaveStream™ LED optics eliminates the LED piliated image and reduces visible glare providing high levels of visibility.

SPECIFICATION FEATURES

Construction
External hardware and casting seams are minimized to enhance appearance. IP66 rated, low copper, cast aluminum housing maintains strength and precision providing for: rapid heat dissipation, vandal resistance and superior dayform.

Optics
General purpose symmetric distribution is available using WaveStream LED optical technology. The optical waveguide is manufactured using precision injection molded acrylic for the ultimate level of glare control and visual comfort. Offered standard in 4000K, (41, 270K) CCT, optional 3000K minimum 80 CRI.

Electrical
LED driver(s) are mounted to electrical tray for easy installation and maintenance for 120-277V 50/60Hz operation. Offered standard with 0-10V dimming driver and Cooper Lighting Solutions' proprietary circuit module designed to withstand 10kV of transient line surge. Luminaire is suitable for ambient temperature applications.

from -40°C (-40°F) to 40°C (104°F) and IP66 rated against the ingress of dust and water.

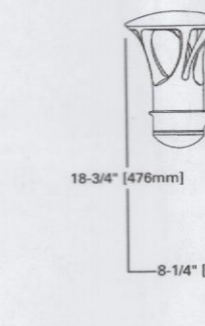
Controls
The Arbor Wall Sconce options are designed to be simple and cost-effective ASHRAE and California Title 24 compliant solutions. An integrated dimming and occupancy sensor is a standalone control option available in bi-level dimming (MS/DM) operation. An optional handheld remote allows custom programming to suit all needs.

Mounting
Standard cast aluminum secure-mount plate that mounts to the wall directly over a 4" J-Box. Fixture hinges onto mounting plate and is secured with single stainless steel fastener. Mounting plate features a one piece EPDM gasket on back side of plate to firmly seal fixture to wall surface, forbidding entry of moisture and particulates.

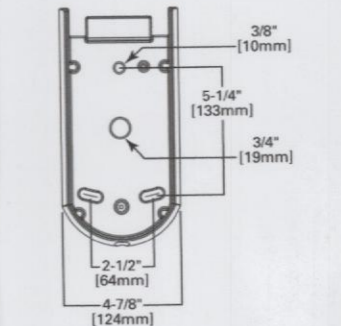
Finish
Cooper Lighting Solutions utilizes premium ultra-weatherable TGIC based polyester powder coatings that are specifically formulated to withstand extended outdoor exposure. The powders are formulated exclusively for Cooper Lighting Solutions to serve functionally as well as decorative. Good film appearance combined with excellent mechanical an exterior exposure qualities display greater than twice as much gloss retention. RAL and custom color matches available. Finish is compliant with ASTM B117 3000hr salt spray standard.

Warranty
Five-year warranty.

DIMENSIONS



WALL SCONCE DRILL PATTERN

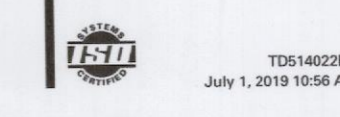


ABW ARBOR WALL SCONCE
WALL MOUNT LUMINAIRE

CERTIFICATION DATA
ULUL Listed
90/90
RoHS
IC-16032 IP66 Housing
ANSI C136-31 3G Vibration
ASTM A898 Low Copper Alloy
ASTM B117 Salt Spray Tested

ENERGY DATA
Electronic LED Driver
-0.8 Power Factor
-26% Total Harmonic Distortion
120-277V 50/60Hz
40°C Minimum Temperature
40°C Ambient Temperature Rating

SHIPPING DATA
Approximate Net Weight:
11.7 lbs. (5.3 kg)



PHOTOMETRIC PLAN
SCALE: 1" = 40'

Label	Quantity	Manufacturer	Catalog Number	Description	Wattage
A	26	KIM LIGHTING	BNB-27L3K	BOUNCE BOLLARD LED DIE CAST ALUMINUM HOUSING AND LENS FRAME. FLAT GLASS LENS, FOUR 3/4" RODS HOLDING FIXTURE HEAD OFF BALLAST COMPARTMENT/RISE.	30.6
B	16	COOPER LIGHTING SOLUTIONS - INVUE (FORMERLY EATON)	ABW-B1-LED-D1-A-8030	ARBOR OUTDOOR ARCHITECTURAL WALLMOUNT 80 CRI, 3000K LEDS AND ASYMMETRIC OPTIC, GRAPHITE METALLIC PAINTED FINISH	11

SITE DATA SUMMARY:
ZONING: SF-10 WITH SUP Z201-020
PROPOSED USE: HOUSE OF WORSHIP
EXISTING BUILDING SQUARE FOOTAGE: 5976 SF
PROPOSED NET BUILDING SQUARE FOOTAGE W/ RENOVATIONS: 7125 SF
FUTURE CHAPEL BUILDING ADDITION: 1442 SF
TOTAL BUILDING SQUARE FOOTAGE (PROPOSED AND FUTURE): 9567 SF
BUILDING HEIGHT: 28 FT
LOT AREA 7.45 ACRES BUILDING LOT COVERAGE: 2.9%
PARKING SPACES REQUIRED: 38 SPACES
HANDICAP PARKING REQUIRED: 1
INTERIOR LANDSCAPING REQUIRED: 15%
TOTAL LANDSCAPING PROVIDED: 53.5%
TOTAL SQUARE FOOTAGE OF IMPERVIOUS SURFACE=53,056 SF
PARKING SPACES 9'x20'
PROPOSED 24' FIRE LANE/ACCESS EASEMENT TO BE PAVED PER CITY OF ROCKWALL STANDARDS
EXTERIOR PROPOSED BUILDING SIDE LIGHTING TO BE WALL PACK WITH DOWN CAST LOW ILLUMINATION
DRIVEWAY PARKING BOLLARDS TO BE DOWN CAST LOW LIGHT ILLUMINATION

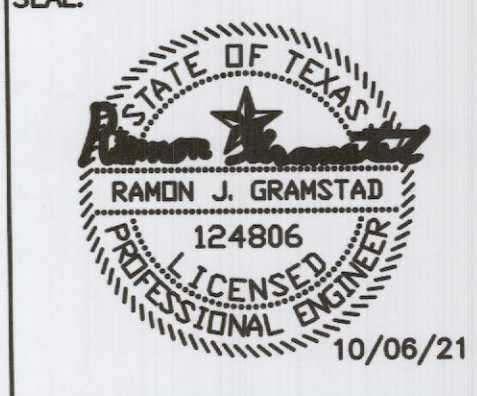
CASE #SP2021-025

PLANNING & ZONING CHAIRMAN
DATE _____
PLANNING DIRECTOR
DATE _____

ST. BENEDICT'S ANGLICAN CHURCH
ROCKWALL, TX

REV#	DESCRIPTION	DATE
1	CITY COMMENTS	09.29.21
2	CITY COMMENTS	10.06.21

REV#	DESCRIPTION	DATE
1	CITY COMMENTS	09.29.21
2	CITY COMMENTS	10.06.21



ISSUE/ORIGINAL COPYRIGHT
DATE: 09.15.21
PROJECT #: 21075-06-203
DRAWN BY: RG
CHECKED BY: JR
SHEET NAME:
PHOTOMETRIC PLAN
SHEET NUMBER:
E1

