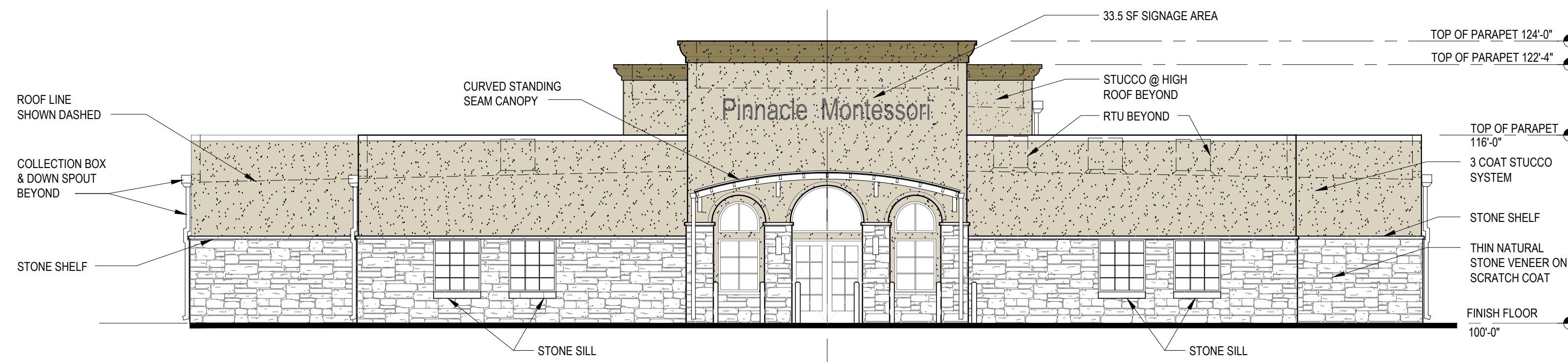


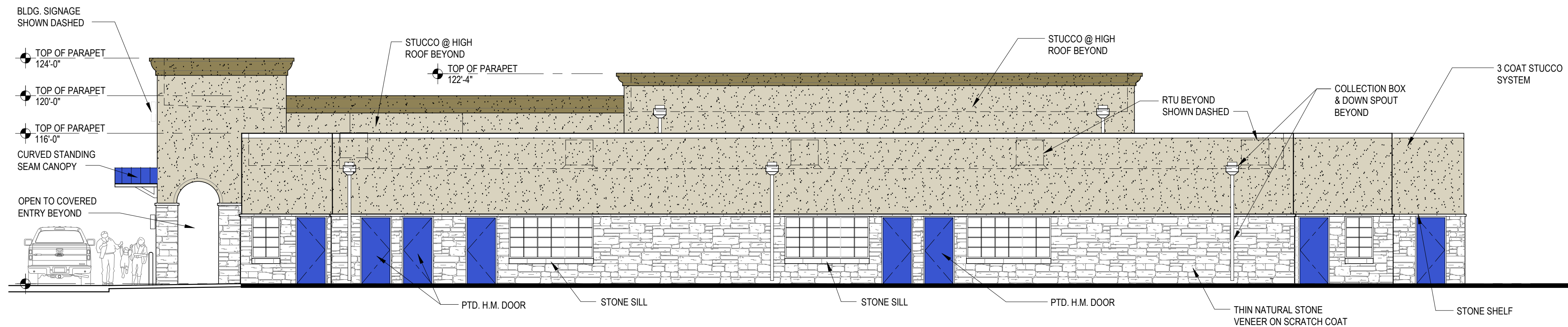




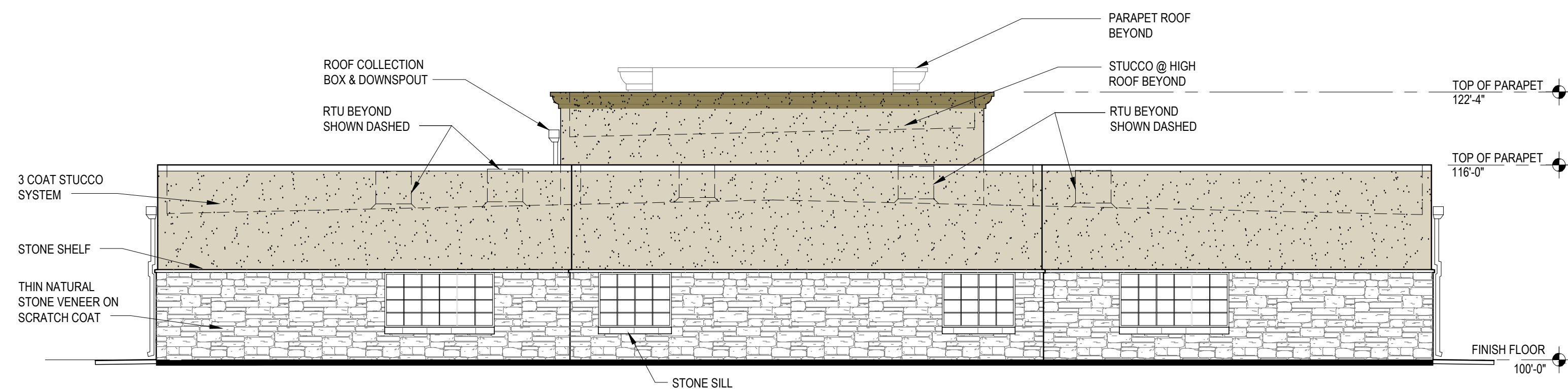
Z:\Architecture\032 Rockwall\A3.0 - SCHOOL BUILDING - EXTERIOR ELEVATIONS Ver B8a.dwg, 4/24/2020 8:56:32 AM



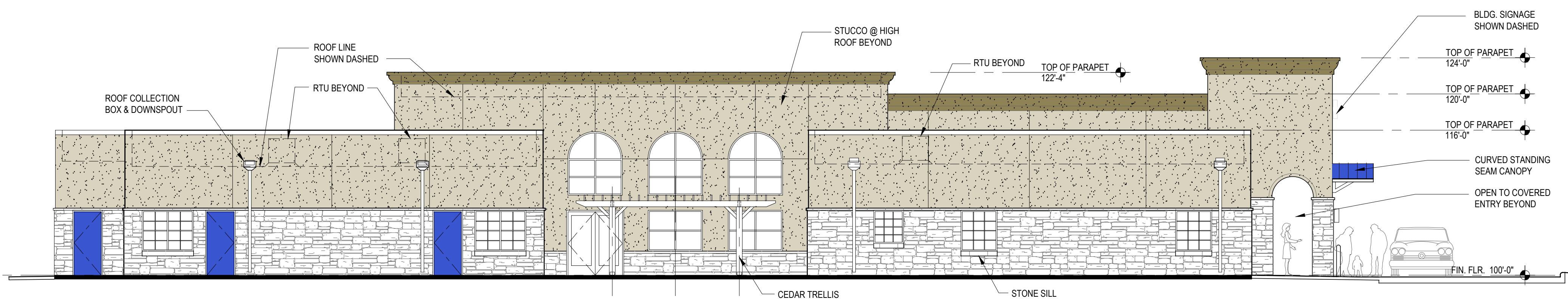
**1 NORTH ELEVATION - SCHOOL**  
SCALE: 1/8" = 1'-0"  
(STREET ELEVATION)



**2 WEST ELEVATION - SCHOOL**  
SCALE: 1/8" = 1'-0"



**3 SOUTH ELEVATION - SCHOOL**  
SCALE: 1/8" = 1'-0"



**4 EAST ELEVATION - SCHOOL**  
SCALE: 1/8" = 1'-0"

**ELEVATION NOTES**

1. PROVIDE 1/2" MINIMUM OF SLOPE AWAY FROM WALL ON TOP SURFACE OF WALL PROJECTIONS.
2. WHERE EXTERIOR WALL MOUNTED LIGHTING PROTRUDES GREATER THAN 4" FROM WALL, BOTTOM OF FIXTURE TO BE 8'-0" A.F.F. MAXIMUM.
3. REFER TO CIVIL FOR FINISH FLOOR ELEVATIONS.
4. FLASHING, WATERPROOF MEMBRANES, PROPER CAULKS AND SEALANTS (BACKER RODS AS REQUIRED) SHALL BE INSTALLED AROUND ALL WINDOWS, DOORS, ROOF OPENINGS, HORIZONTAL AND VERTICAL JOINTS OF DISSIMILAR MATERIALS, MATERIAL TRANSITIONS, TRIMS AND OTHER WEATHER EXPOSED AREAS.
5. ALL PATIOS, AND SIDEWALKS TO BE SLOPED 1/4 PER FOOT / 2% MAXIMUM IN DIRECTION INDICATED ON PLANS AND AWAY FROM EXTERIOR WALLS.
6. GRADES AROUND ALL EXTERIOR WALLS OF THE BUILDING TO BE 8 INCHES MINIMUM BELOW THE FINISHED FLOOR AND IS TO SLOPE AWAY FROM THE BUILDING.
7. GRADE ELEVATIONS ARE APPROXIMATE. REFER TO CIVIL & DRAWINGS FOR FINAL GRADING.
8. PROJECT ADDRESS SIGNAGE TO BE 12" HT. INDIVIDUAL MOUNT, METAL REVERSE PAN CHANNEL NUMBER, STREET NUMBERS ONLY.
9. SIGNS ARE FOR REFERENCE ONLY. ALL SIGNS SHALL BE REVIEWED AND INSTALLED UNDER SEPARATE PERMIT.

**SYMBOL LEGEND - ELEVATIONS**

	THIN STONE STONE VENEER		TOP OF PLATE
	STUCCO		TOP OF DECK
	DOOR TAG		TOP OF SLAB
	WINDOW TAG		FINISH FLOOR
	WALL SECTION TAG		
	DETAIL SECTION TAG		

SCHOOL BUILDING						
BUILDING MATERIALS	SOUTH	NORTH	EAST	WEST	TOTALS	
	SF	SF	SF	SF	SF	%
STUCCO	1,006	972	1,480	1,529	4,987	57 %
THIN STONE VENEER	600	613	631	601	2,445	28 %
DOORS	0	42	105	168	315	4 %
WINDOWS	134	115	290	146	685	8 %
STONE WINDOW SILLS	17	9	12	18	56	1 %
STONE SHELF	27	25	34	35	121	1 %
STANDING SEAM CANOPY	0	12	9	9	30	1 %
TOTALS	1,784	1,845	2,579	2,524	8,732	100 %

NOTE:  
THIS FACADE PLAN IS FOR CONCEPTUAL PURPOSES ONLY.  
ALL MECHANICAL EQUIPMENT SHALL BE SCREENED FROM PUBLIC VIEW IN ACCORDANCE WITH THE COMPREHENSIVE ZONING ORDINANCE.  
WHEN PERMITTED EXPOSED UTILITY BOXES AND CONDUITS SHALL BE PAINTED TO MATCH BUILDING.  
ALL SIGNAGE AREA AND LOCATIONS ARE SUBJECT TO APPROVAL BY BUILDING INSPECTION DEPARTMENT.

Revisions:

#	DATE	COMMENTS



**PROJECT**  
**PINNACLE MONTESSORI OF ROCKWALL**  
Site Address:  
E. Ralph Hall and Plaza Drive  
Rockwall, Texas

PROJECT # SRC 032

**OWNER**

**Lakeside Kids, LLC**  
5909 Beth Drive  
Plano, Texas 75093

SHEET TITLE:  
SCHOOL BUILDING - EXTERIOR ELEVATIONS

SHEET NO.

**A3.0**

ISSUE DATE: MARCH 20, 2020







# EXTERIOR MATERIAL SAMPLE BOARD

**TRIM COLOR**

DOVER WHITE, SW 6385  
PAINTED TRIM BELOW CANOPY

**HM DOORS**

HM DOORS - Indigo Batik, SW 7602  
STANDING SEAM CANOPY

**WALL STUCCO**

COLOR - STO #16031  
ELEVATION LOCATIONS:  
\* STUCCO ABOVE STONE WAINSCOT  
\* STUCCO FINISH ON FRP ENTRY COLUMN COVERS

**WHITE LIMESTONE**

COLOR - HARD WHITE W/ 10% NICOTINE ACCENTS

ELEVATION LOCATIONS:  
- STONE VENEER WAINSCOT  
- 3" x 2'-0" CUT STONE SHELF TRANSITION AT  
BASE OF STUCCO

**WINDOWS**

FIBERGLASS SINGLE HUNG WINDOW  
FRAME - WHITE



PROJECT  
**Pinnacle Montessori Academy of Rockwall**  
Site Address:  
E. Ralph Hall Parkway and Plaza Drive  
Rockwall, Texas







TREE SURVEY FIELD DATA				
No.	Dia. (Inches)	Species (Common name)	Status	Mitigation (Inches)
1659	6	Cedar	TO BE REMOVED	
1660	8	Cedar	TO BE REMOVED	
1661	18	Cedar	TO REMAIN	
1662	6	Cedar	TO BE REMOVED	
1663	6	Cedar	TO BE REMOVED	
1664	6	Cedar	TO BE REMOVED	
1665	6	Cedar	TO BE REMOVED	
1666	6	Cedar	TO BE REMOVED	
1667	6	Cedar	TO BE REMOVED	
1668	6	Cedar	TO REMAIN	
1669	6	Cedar	TO REMAIN	
1670	6	Cedar	TO BE REMOVED	
1671	8	Cedar	TO BE REMOVED	
1672	6	Cedar	TO BE REMOVED	
1673	6	Cedar	TO BE REMOVED	
1674	6	Cedar	TO BE REMOVED	
1675	12	Cedar	TO BE REMOVED	6
1676	8	Cedar	TO REMAIN	
1677	12	Cedar	TO BE REMOVED	6
1678	6	Cedar	TO REMAIN	
1679	6	Cedar	TO REMAIN	
1680	6	Cedar	TO REMAIN	
1681	6	Cedar	TO REMAIN	
1682	6	Cedar	TO REMAIN	
1683	6	Cedar	TO REMAIN	
1684	6	Cedar	TO REMAIN	
1685	12	Cedar	TO BE REMOVED	6
1686	6	Cedar	TO REMAIN	
1687	10	Cedar	TO REMAIN	
1688	6	Cedar	TO REMAIN	
1689	6	Cedar	TO REMAIN	
1690	6	Cedar	TO REMAIN	
1691	6	Cedar	TO REMAIN	
1692	6	Cedar	TO REMAIN	
1693	14	Cedar	TO REMAIN	
1694	10	Cedar	TO REMAIN	
1695	8	Cedar	TO REMAIN	
1696	6	Cedar	TO REMAIN	
1697	16	Cedar	TO REMAIN	
1698	6	Cedar	TO REMAIN	
1699	6	Cedar	TO REMAIN	
1700	18	Cedar	TO REMAIN	
1838	12	Hackberry	TO REMAIN	
1839	12	Hackberry	TO REMAIN	
1840	8	Green Ash	TO REMAIN	
1841	10	Hackberry	TO REMAIN	
1842	10	Hackberry	TO REMAIN	
1843	12	Gulf Black Willow	TO REMAIN	
1844	10	Gulf Black Willow	TO REMAIN	
1845	10	Cottonwood	TO REMAIN	
1846	6	Green Ash	TO REMAIN	
1847	6	Cottonwood	TO REMAIN	
1848	6	Hackberry	TO BE REMOVED	DECLINE
1849	12	Hackberry	TO BE REMOVED	6
1850	8	Hackberry	TO BE REMOVED	DECLINE
1851	6	Green Ash	TO BE REMOVED	6
1852	6	American Elm	TO BE REMOVED	6
1853	6	Hackberry	TO BE REMOVED	
1854	12	Hackberry	TO BE REMOVED	6
1855	8	Hackberry	TO BE REMOVED	DECLINE
1856	6	Hackberry	TO BE REMOVED	DECLINE
1857	12	Hackberry	TO REMAIN	
1858	12	Cedar Elm	TO REMAIN	
1859	6	Hackberry	TO REMAIN	
1860	10	Hackberry	TO REMAIN	
1861	8	American Elm	TO REMAIN	
1862	8	Cedar Elm	TO REMAIN	
1863	8	Cedar	TO REMAIN	
1864	10	American Elm	TO REMAIN	
1865	6	Hackberry	TO REMAIN	
1866	6	Hackberry	TO REMAIN	
1867	10	Cottonwood	TO BE REMOVED	
1868	8	Hackberry	TO BE REMOVED	DECLINE
1869	8	Hackberry	TO BE REMOVED	DECLINE
1870	6	Hackberry	TO BE REMOVED	
1871	10	Hackberry	TO BE REMOVED	
1872	6	Hackberry	TO BE REMOVED	
1873	10	American Elm	TO BE REMOVED	10
1874	8	Hackberry	TO BE REMOVED	
1875	6	Hackberry	TO BE REMOVED	
1876	8	Cedar	TO BE REMOVED	
1877	6	Hackberry	TO BE REMOVED	
1878	6	Cedar	TO BE REMOVED	
1879	8	Hackberry	TO BE REMOVED	
1880	10	Hackberry	TO BE REMOVED	
1881	8	Hackberry	TO BE REMOVED	
1882	6	Hackberry	TO BE REMOVED	
1883	6	Hackberry	TO REMAIN	
1884	6	Hackberry	TO REMAIN	
1885	12	Cedar	TO REMAIN	
1886	10	Cedar	TO REMAIN	
1887	12	Cedar	TO REMAIN	
1888	8	American Elm	TO BE REMOVED	8
1889	8	Cedar	TO BE REMOVED	
1890	12	Cedar	TO REMAIN	
1891	6	Hackberry	TO REMAIN	
1892	8	Cedar	TO BE REMOVED	
1893	6	Cedar	TO BE REMOVED	
1894	10	Green Ash	TO BE REMOVED	10
1895	6	Cedar	TO BE REMOVED	
1896	22	Cottonwood	TO BE REMOVED	
1897	8	Hackberry	TO BE REMOVED	
1898	12	Cedar	TO BE REMOVED	6
1899	10	Cedar	TO BE REMOVED	
2017	6	Cedar	TO REMAIN	
2018	6	Cedar	TO REMAIN	
2020	6	Cedar	TO REMAIN	
2022	14	Cedar	TO BE REMOVED	7
2023	10	Cedar	TO BE REMOVED	
2024	6	Cedar	TO BE REMOVED	
2025	6	Cedar	TO BE REMOVED	
2026	6	Cedar	TO BE REMOVED	
2027	24	Cedar	TO REMAIN	
2028	6	Cedar	TO REMAIN	
2029	10	Cedar	TO REMAIN	
2030	6	Cedar	TO REMAIN	
2031	8	Cedar	TO REMAIN	
2032	10	Cedar	TO REMAIN	
2033	20	Cedar	TO REMAIN	
2034	6	Cedar	TO REMAIN	
2035	6	Cedar	TO BE REMOVED	
2036	6	Cedar	TO BE REMOVED	
2037	6	Cedar	TO BE REMOVED	

2038	6	Cedar	TO BE REMOVED	
2039	6	Cedar	TO BE REMOVED	
2040	6	Cedar	TO BE REMOVED	
2041	6	Cedar	TO BE REMOVED	
2042	6	Cedar	TO BE REMOVED	
2043	6	Cedar	TO BE REMOVED	
2044	6	Cedar	TO BE REMOVED	
2045	6	Cedar	TO BE REMOVED	
2046	10	American Elm	TO BE REMOVED	10
2047	6	Cedar	TO BE REMOVED	
2048	12	Green Ash	TO BE REMOVED	12
2049	8	Cedar	TO BE REMOVED	
2050	10	Green Ash	TO BE REMOVED	10
2051	10	Pecan	TO REMAIN	
2052	6	Cedar	TO REMAIN	
2053	10	Cedar	TO REMAIN	
2054	6	Cedar	TO REMAIN	
2055	10	Cedar	TO REMAIN	
2056	6	Cedar	TO REMAIN	
2057	6	Cedar	TO BE REMOVED	
2058	6	Cedar	TO BE REMOVED	
2059	6	Cedar	TO BE REMOVED	
2060	6	Cedar	TO REMAIN	
2061	6	Cedar	TO BE REMOVED	
2062	6	Cedar	TO REMAIN	
2063	6	Cedar	TO BE REMOVED	
2064	10	Cottonwood	TO REMAIN	
2065	6	Cedar	TO REMAIN	
2066	8	Cedar	TO REMAIN	
2067	6	Cedar	TO REMAIN	
2068	6	Cedar	TO BE REMOVED	
2069	6	Cedar	TO BE REMOVED	
2070	6	Cedar	TO BE REMOVED	
2071	6	Cedar	TO BE REMOVED	
2072	6	Cedar	TO BE REMOVED	
2073	6	Cedar	TO BE REMOVED	
2074	6	Cedar	TO BE REMOVED	
2075	6	Cedar	TO BE REMOVED	
2076	10	Cedar	TO REMAIN	
2077	6	Cedar	TO BE REMOVED	
2078	14	Cedar	TO BE REMOVED	7
2079	6	Cedar	TO BE REMOVED	
2080	6	Cedar	TO BE REMOVED	
2081	6	Cedar	TO BE REMOVED	
2082	6	Cedar	TO BE REMOVED	
2083	6	Cedar	TO BE REMOVED	
2084	6	Cedar	TO BE REMOVED	
2085	8	Cedar	TO REMAIN	
2086	6	Cedar	TO BE REMOVED	
2087	6	Cedar	TO BE REMOVED	
2088	6	Cedar	TO BE REMOVED	
2089	6	Cedar	TO BE REMOVED	
2090	6	Cedar	TO BE REMOVED	
2091	6	Cedar	TO BE REMOVED	
2092	16	Cedar	TO BE REMOVED	8
2093	6	Cedar	TO BE REMOVED	
2095	6	Cedar	TO REMAIN	
2096	16	Cedar	TO REMAIN	
2097	6	Cedar	TO BE REMOVED	
2098	6	Cedar	TO REMAIN	
2099	6	Cedar	TO BE REMOVED	
2100	10	Cedar	TO BE REMOVED	
2101	8	Cedar	TO BE REMOVED	
2102	8	Cedar	TO BE REMOVED	
2103	8	Cedar	TO BE REMOVED	
2104	6	Cedar	TO BE REMOVED	
2105	6	Cedar	TO BE REMOVED	
2106	6	Cedar	TO BE REMOVED	
2107	6	Cedar	TO BE REMOVED	
2108	6	Cedar	TO BE REMOVED	
2109	6	Cedar	TO BE REMOVED	
2110	10	Cedar	TO BE REMOVED	
2111	6	Cedar	TO BE REMOVED	
2112	8	Cedar	TO BE REMOVED	
2113	6	Cedar	TO BE REMOVED	
2114	6	Cedar	TO BE REMOVED	
2115	6	Cedar	TO BE REMOVED	
2116	10	Cedar	TO BE REMOVED	
2117	10	Cedar	TO BE REMOVED	
2118	10	Cedar	TO BE REMOVED	
2119	6	Cedar	TO BE REMOVED	
2120	6	Cedar	TO BE REMOVED	
2121	6	Cedar	TO BE REMOVED	
2122	6	Cedar	TO BE REMOVED	
2123	6	Cedar	TO BE REMOVED	
2124	6	Cedar	TO BE REMOVED	
2125	6	Cedar	TO BE REMOVED	
2126	6	Cedar	TO BE REMOVED	
2127	6	Cedar	TO BE REMOVED	
2128	12	Cedar	TO BE REMOVED	6
2129	6	Cedar	TO BE REMOVED	
2130	6	Cedar	TO BE REMOVED	
2131	6	Cedar	TO BE REMOVED	
2132	22	Cedar	TO BE REMOVED	11
2133	6	Cedar	TO BE REMOVED	
2134	8	Cedar	TO BE REMOVED	
2135	6	Cedar	TO BE REMOVED	
2136	10	Cedar	TO BE REMOVED	
2137	10	Cedar	TO BE REMOVED	
2138	6	Cedar	TO BE REMOVED	
2139	8	Cedar	TO BE REMOVED	
2140	6	Cedar	TO BE REMOVED	
2141	10	Cedar	TO BE REMOVED	
2142	6	Cedar	TO BE REMOVED	
2143	6	Cedar	TO BE REMOVED	
2144	10	Cedar	TO BE REMOVED	
2145	6	Cedar	TO BE REMOVED	
2146	6	Cedar	TO BE REMOVED	
2147	6	Cedar	TO BE REMOVED	
2148	6	Cedar	TO BE REMOVED	
2149	6	Cedar	TO BE REMOVED	
2150	16	Cedar	TO REMAIN	
2151	6	Cedar	TO REMAIN	
2152	6	Cedar	TO REMAIN	
2153	10	Cedar	TO REMAIN	
2154	6	Cedar	TO REMAIN	
2155	6	Cedar	TO REMAIN	
2156	6	Cedar	TO REMAIN	
2157	6	Cedar	TO REMAIN	
2158	6	Cedar	TO REMAIN	
2159	6	Cedar	TO REMAIN	
2160	6	Cedar	TO REMAIN	
2161	6	Cedar	TO REMAIN	
2162	6	Cedar	TO REMAIN	
2163	6	Cedar	TO REMAIN	
2164	6	Cedar	TO REMAIN	
2165	12	Cedar	TO REMAIN	
2166	12	Cedar	TO REMAIN	
2167	8	Cedar	TO REMAIN	
2168	8	Cedar	TO REMAIN	
2169	6	Cedar	TO REMAIN	
2170	6	Cedar	TO REMAIN	
2171	6	Cedar	TO REMAIN	
2172	6	Cedar	TO REMAIN	
2173	6	Cedar	TO REMAIN	
2174	6	Cedar	TO REMAIN	
2175	6	Cedar	TO REMAIN	
2176	6	Cedar	TO REMAIN	
2177	6	Cedar	TO REMAIN	
2178	6	Cedar	TO REMAIN	
2179	6	Cedar	TO BE REMOVED	
2180	8	Cedar	TO BE REMOVED	
2181	6	Cedar	TO REMAIN	
2182	6	Cedar	TO REMAIN	
2183	6	Cedar	TO REMAIN	
2184	6	Cedar	TO REMAIN	
2185	6	Cedar	TO REMAIN	
2186	6	Cedar	TO REMAIN	
2187	6	Cedar	TO REMAIN	
2188	6	Cedar	TO REMAIN	
2189	6	Cedar	TO REMAIN	
2190	6	Cedar	TO REMAIN	
2191	6	Cedar	TO REMAIN	
2192	6	Cedar	TO REMAIN	
2193	6	Cedar	TO REMAIN	
2194	6	Cedar	TO REMAIN	
2195	6	Cedar	TO REMAIN	
2196	6	Cedar	TO REMAIN	
2197	6	Cedar	TO REMAIN	
2198	6	Cedar	TO REMAIN	
2199	6	Cedar	TO REMAIN	
2200	6	Cedar	TO REMAIN	
2201	6	Cedar	TO REMAIN	
2202	6	Cedar	TO REMAIN	
2203	6	Cedar	TO REMAIN	
2204	6	Cedar	TO REMAIN	
2205	6	Cedar	TO REMAIN	
2206	6	Cedar	TO REMAIN	
2207	6	Cedar	TO REMAIN	
2208	6	Cedar	TO REMAIN	
2209	6	Cedar	TO REMAIN	
2210	6	Cedar	TO REMAIN	
2211	6	Cedar	TO REMAIN	
2212	6	Cedar	TO REMAIN	
2213	6	Cedar	TO REMAIN	
2214	6	Cedar	TO REMAIN	
2215	6	Cedar	TO REMAIN	
2216	6	Cedar	TO REMAIN	
2217	6	Cedar	TO REMAIN	
2218	6	Cedar	TO REMAIN	
2219	6	Cedar	TO REMAIN	
2220	6	Cedar	TO REMAIN	

2368	8	Cedar	TO REMAIN	
2369	16	Cedar	TO REMAIN	
2370				

















BLOCK 1  
 IMAN ADDITION  
 PAGE 373  
 C.C.T.

F  
 ESTATES  
 PAGE 26  
 C.C.T.

Site - West  
 Scale: 1 inch= 20 Ft.

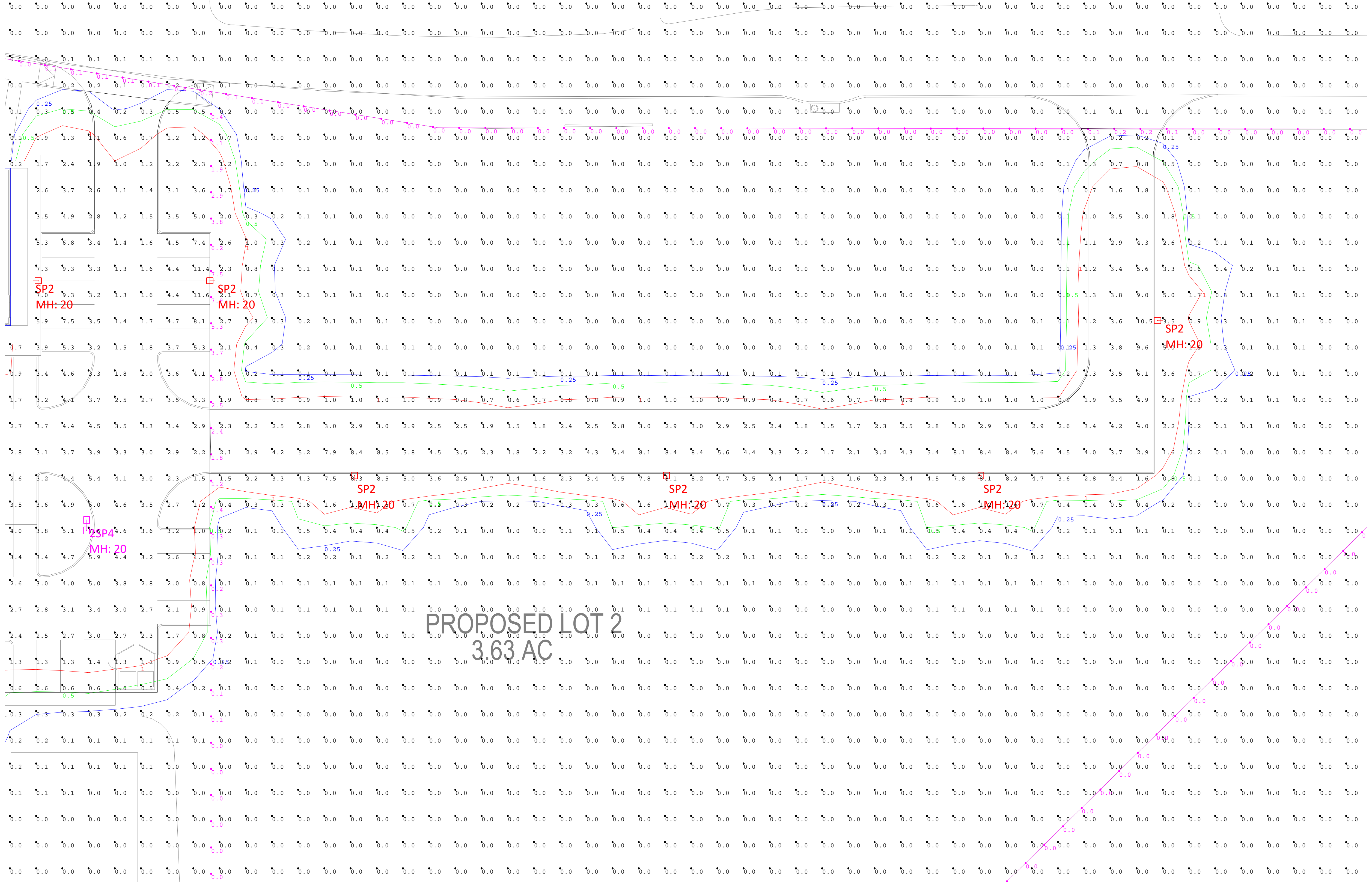
Project Name: PMA Rockwall  
 Client: ARIO  
 Drawn By: CWelborn  
 Project # :  
 Date: 5/6/2020  
 Version:



THE ENGINEER AND/OR ARCHITECT MUST DETERMINE APPLICABILITY OF THE LAYOUT TO EXISTING / FUTURE FIELD CONDITIONS. THIS LIGHTING LAYOUT REPRESENTS ILLUMINATION LEVELS CALCULATED FROM LABORATORY DATA TAKEN UNDER CONTROLLED CONDITIONS IN ACCORDANCE WITH ILLUMINATING ENGINEERING SOCIETY APPROVED METHODS. ACTUAL PERFORMANCE OF ANY MANUFACTURER'S LUMINAIRE MAY VARY DUE TO VARIATION IN ELECTRICAL VOLTAGE, TOLERANCE IN LAMPS, AND OTHER VARIABLE FIELD CONDITIONS. THESE LIGHTING CALCULATIONS ARE NOT A SUBSTITUTE FOR INDEPENDENT ENGINEERING ANALYSIS OF LIGHTING SYSTEM SUITABILITY AND SAFETY. THE ENGINEER AND/OR ARCHITECT IS RESPONSIBLE TO REVIEW FOR COMPLIANCE OF ALL APPLICABLE ENERGY CODES AND LIGHTING QUALITY STANDARDS.



1/2 PARKWAY  
5 W



Site - East  
Scale: 1 inch= 20 Ft.

Project Name: PMA Rockwall	Project # :
Client: ARIO	Date: 5/6/2020
Drawn By: CWelborn	Version:

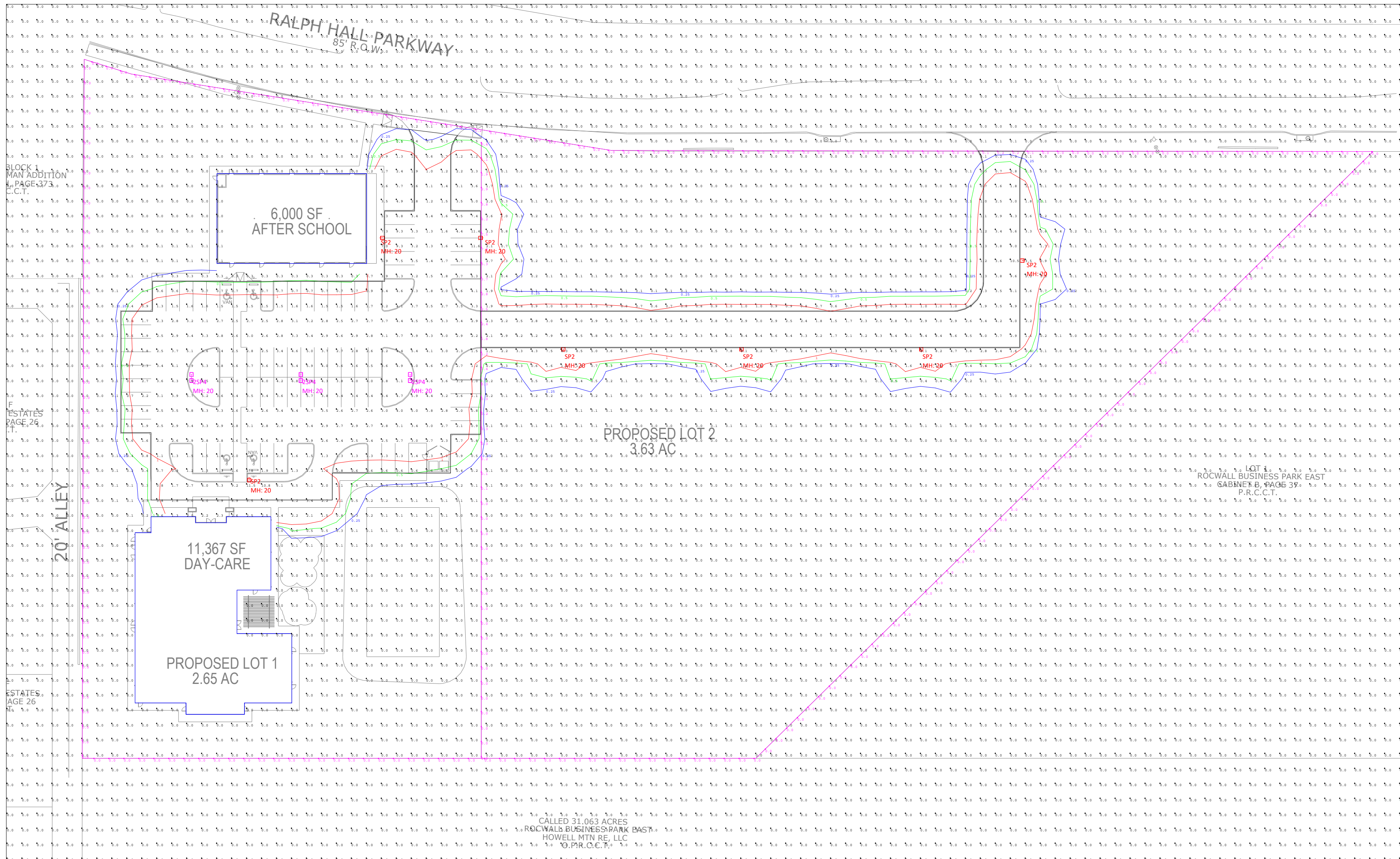


THE ENGINEER AND/OR ARCHITECT MUST DETERMINE APPLICABILITY OF THE LAYOUT TO EXISTING / FUTURE FIELD CONDITIONS. THIS LIGHTING LAYOUT REPRESENTS ILLUMINATION LEVELS CALCULATED FROM LABORATORY DATA TAKEN UNDER CONTROLLED CONDITIONS IN ACCORDANCE WITH ILLUMINATING ENGINEERING SOCIETY APPROVED METHODS. ACTUAL PERFORMANCE OF ANY MANUFACTURER'S LUMINAIRE MAY VARY DUE TO VARIATION IN ELECTRICAL VOLTAGE, TOLERANCE IN LAMPS, AND OTHER VARIABLE FIELD CONDITIONS. THESE LIGHTING CALCULATIONS ARE NOT A SUBSTITUTE FOR INDEPENDENT ENGINEERING ANALYSIS OF LIGHTING SYSTEM SUITABILITY AND SAFETY. THE ENGINEER AND/OR ARCHITECT IS RESPONSIBLE TO REVIEW FOR COMPLIANCE OF ALL APPLICABLE ENERGY CODES AND LIGHTING QUALITY STANDARDS.



Luminaire Schedule					LLF	Lum. Lumens	Lum. Watts	Total Watts	Filename
Symbol	Label	Qty	Arrangement	Manufacturer & Part Number					
	2SP4	3	BACK-BACK	BEACON VP-L-64L-135-4K7-4   2@180DEGREES	0.900	14935	130.874	785.244	VP-L-64L-135-4K7-4 (7).ies
	SP2	7	SINGLE	BEACON VP-L-64L-135-4K7-2	0.900	17761	137.6	963.2001	VP-L-64L-135-4K7-2 (3).ies

Calculation Summary											
Label	CalcType	Units	PtSpcLr	PtSpcTb	Avg	Max	Min	Avg/Min	Max/Min	Description	
Grade	ILLUMINANCE	Fc	10	10	0.22	11.6	0.0	N.A.	N.A.	Readings taken at 0'-0" AFG	
Property Line	ILLUMINANCE	Fc	10	N.A.	0.20	7.9	0.0	N.A.	N.A.	Readings taken at 0'-0" AFG	
East Drive	ILLUMINANCE	Fc			3.69	10.5	0.1	36.90	105.00		
Parking Lot & Drives	ILLUMINANCE	Fc			3.00	11.6	0.2	15.00	58.00		



Site - Overall  
Scale: 1 inch= 50 Ft.

- NOTES:
- 1) Fixture Mounting Heights (MH) are indicated next to each fixture.
  - 2) All fixtures labeled with "\_alt" indicates an alternative fixture different from what was listed in the fixture schedule received was used in this calculation
  - 3) All fixtures labeled with "\_ph" indicates that another fixture's IES file was used as a placeholder due to unavailable IES files from the specified Manufacturer.
  - 4) Interior reflectances 80/50/20; exterior reflectances 20% UON.
  - 5) Quantity (QTY) indicated on HLA Luminaire Schedule is for what is included in this calculation study only - Not final counts.
  - 6) Contractor to verify exact fixture quantities and fixture run lengths before ordering.

Project Name: PMA Rockwall  
Client: ARIO  
Drawn By: CWelborn  
Project # :  
Date: 5/6/2020  
Version:



THE ENGINEER AND/OR ARCHITECT MUST DETERMINE APPLICABILITY OF THE LAYOUT TO EXISTING / FUTURE FIELD CONDITIONS. THIS LIGHTING LAYOUT REPRESENTS ILLUMINATION LEVELS CALCULATED FROM LABORATORY DATA TAKEN UNDER CONTROLLED CONDITIONS IN ACCORDANCE WITH ILLUMINATING ENGINEERING SOCIETY APPROVED METHODS. ACTUAL PERFORMANCE OF ANY MANUFACTURER'S LUMINAIRE MAY VARY DUE TO VARIATION IN ELECTRICAL VOLTAGE, TOLERANCE IN LAMPS, AND OTHER VARIABLE FIELD CONDITIONS. THESE LIGHTING CALCULATIONS ARE NOT A SUBSTITUTE FOR INDEPENDENT ENGINEERING ANALYSIS OF LIGHTING SYSTEM SUITABILITY AND SAFETY. THE ENGINEER AND/OR ARCHITECT IS RESPONSIBLE TO REVIEW FOR COMPLIANCE OF ALL APPLICABLE ENERGY CODES AND LIGHTING QUALITY STANDARDS.



Revisions:

#	DATE	COMMENTS



**PROJECT**  
**PINNACLE**  
**MONTESSORI**  
**OF**  
**ROCKWALL**

Site Address:  
 E. Ralph Hall and Plaza Drive  
 Rockwall, Texas

PROJECT #  
 SRC 032

OWNER

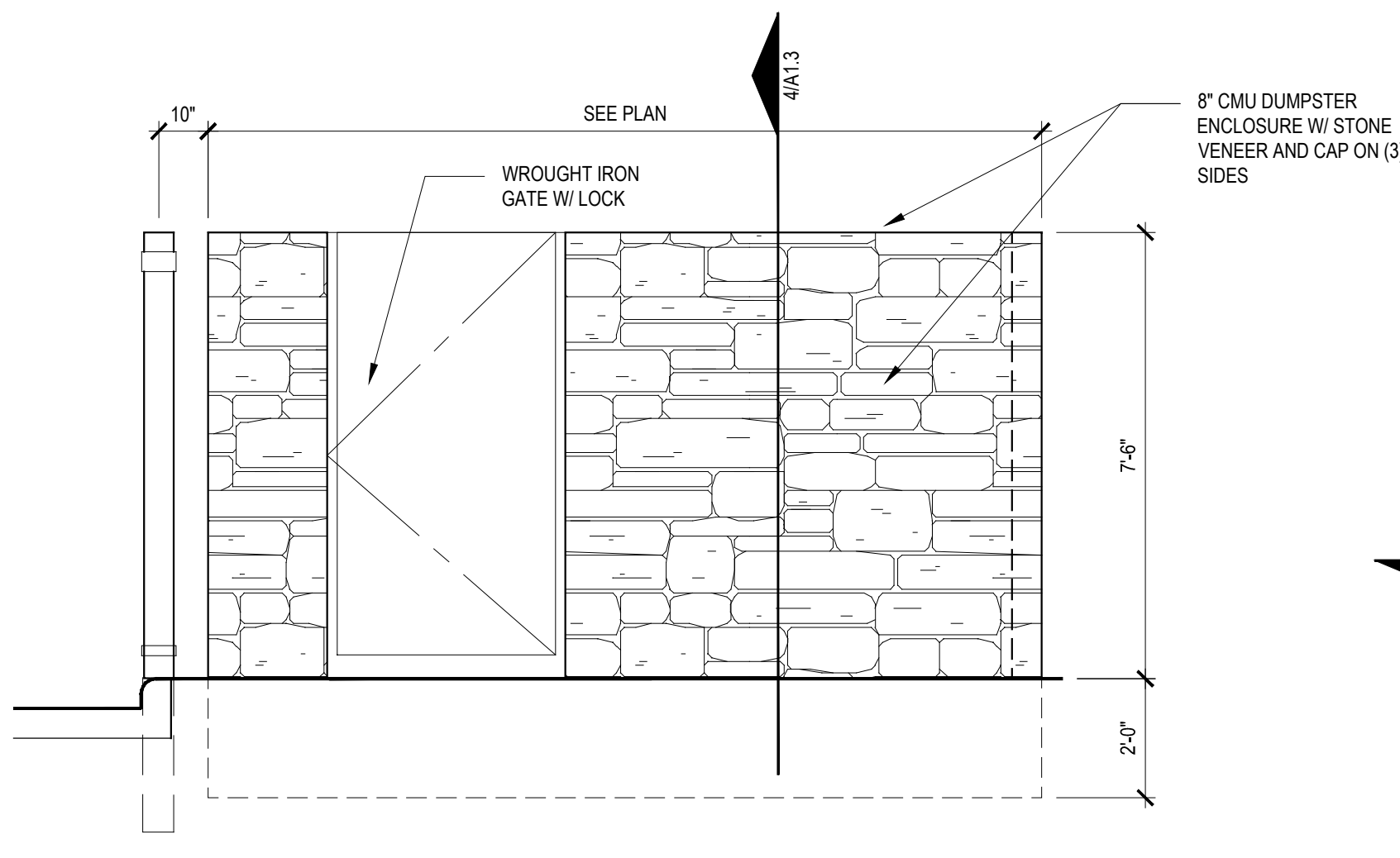
**Lakeside**  
**Kids, LLC**

5909 Beth Drive  
 Plano, Texas 75093

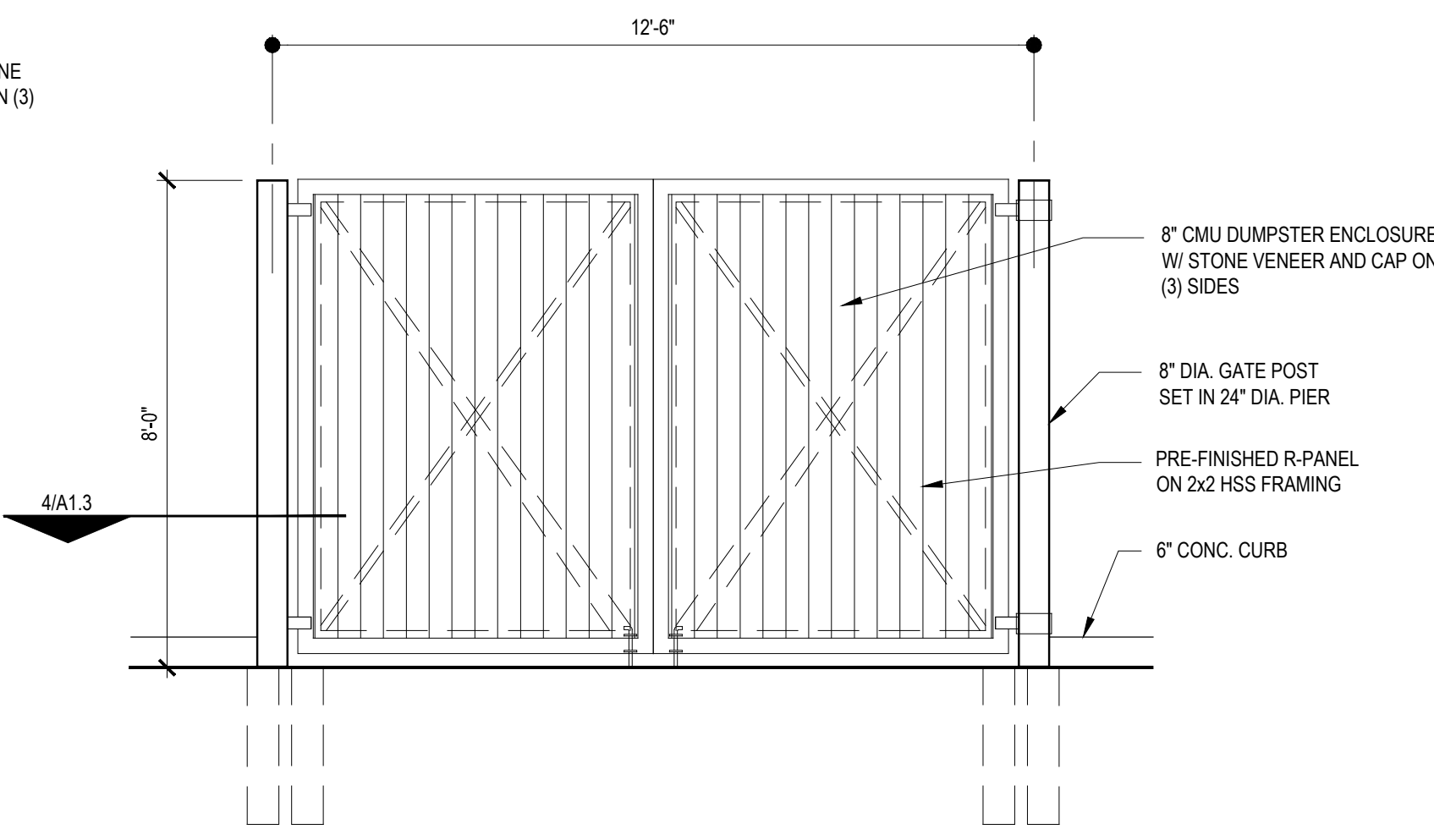
SHEET TITLE:  
 SITE DETAILS

SHEET NO.

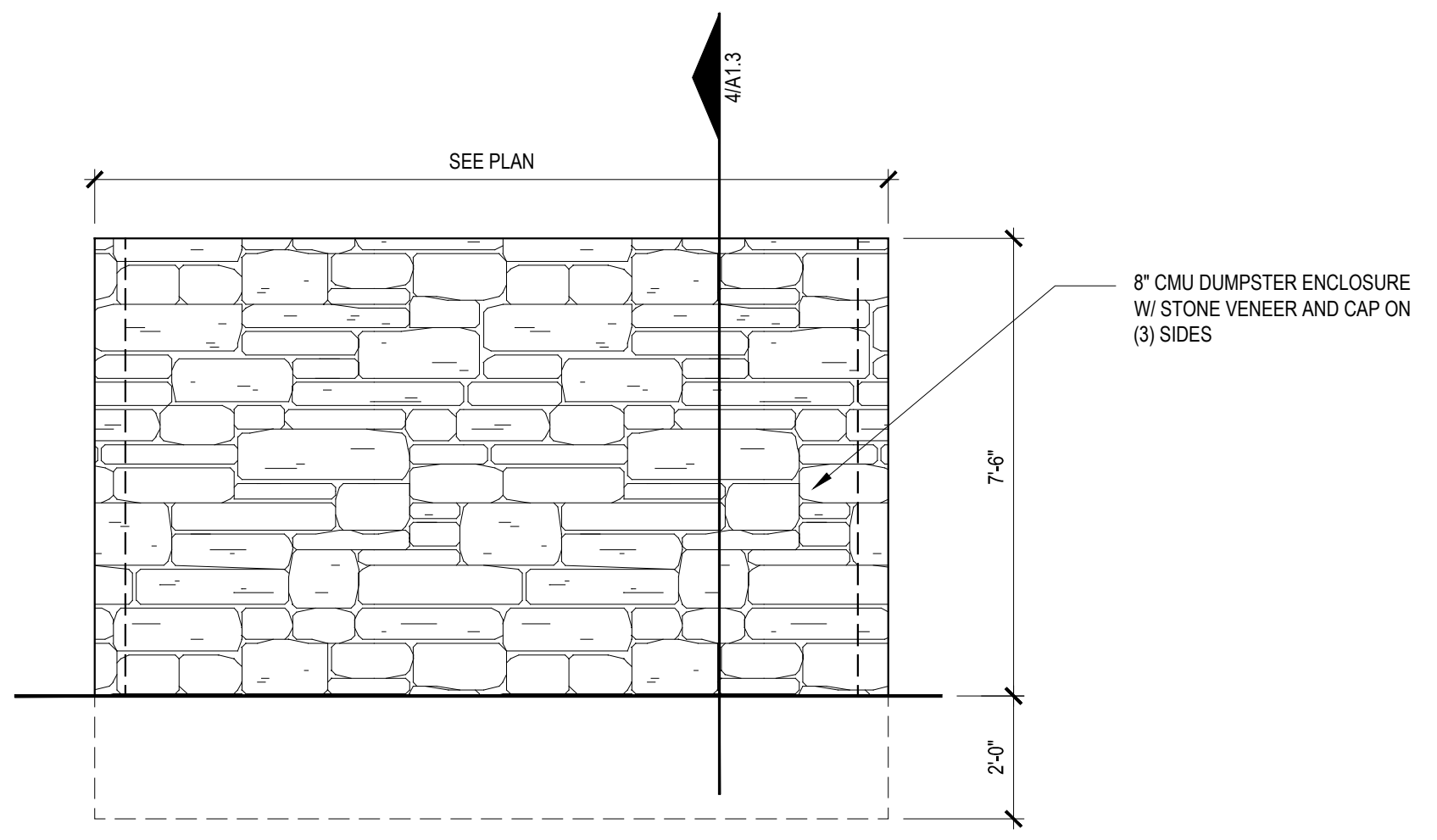
A1.3



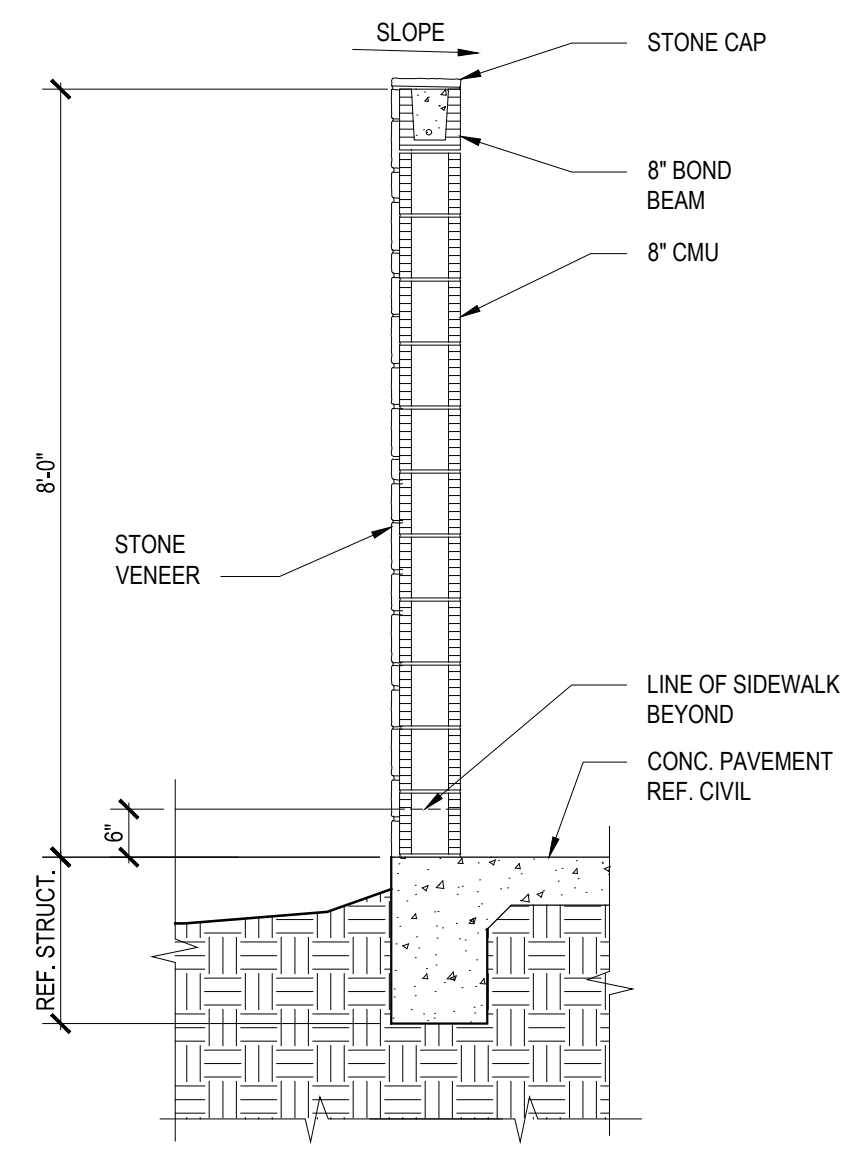
**1 DUMPSTER ENCLOSURE-SIDE**  
 SCALE: 3/8= 1'-0"



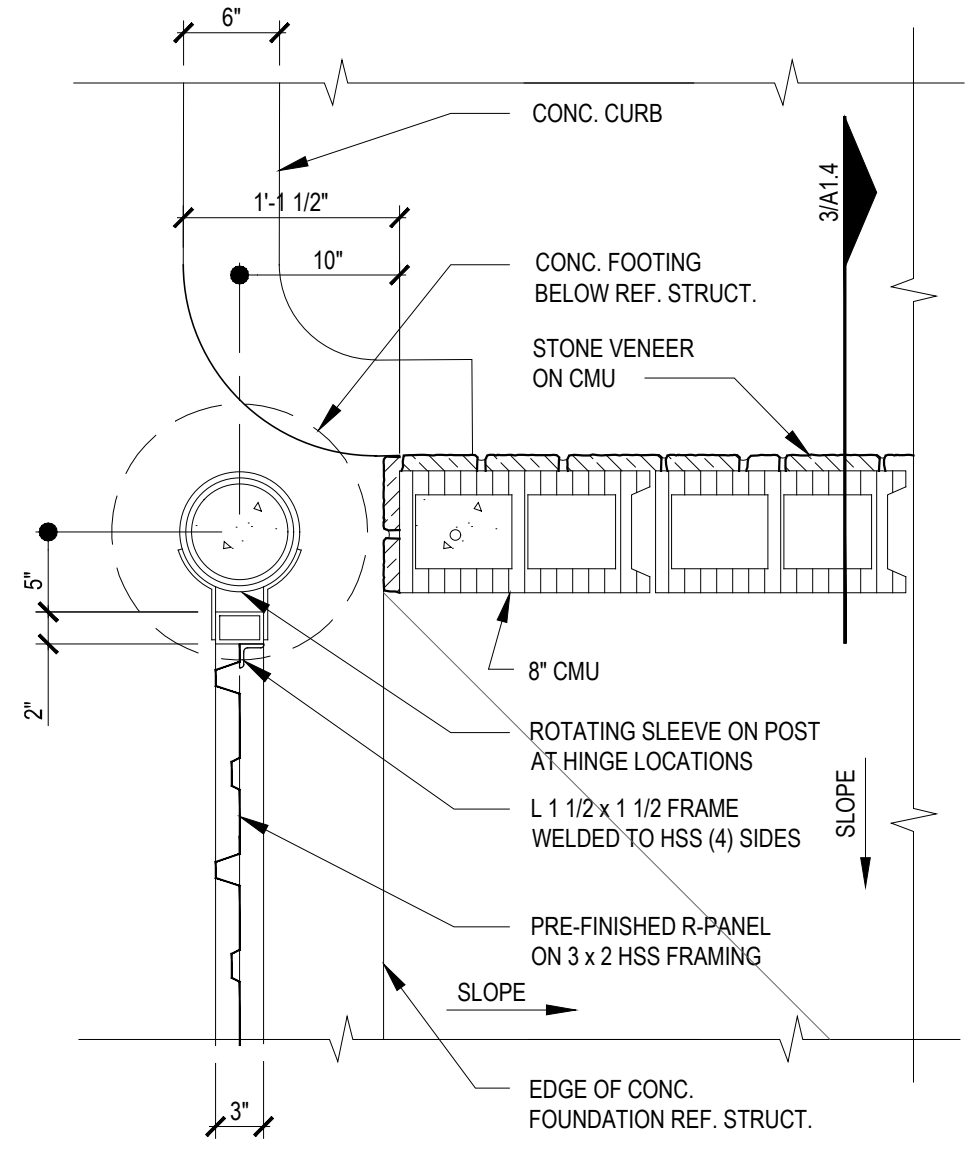
**2 DUMPSTER ENCLOSURE-FRONT**  
 SCALE: 3/8= 1'-0"



**3 DUMPSTER ENCLOSURE-REAR**  
 SCALE: 3/8= 1'-0"



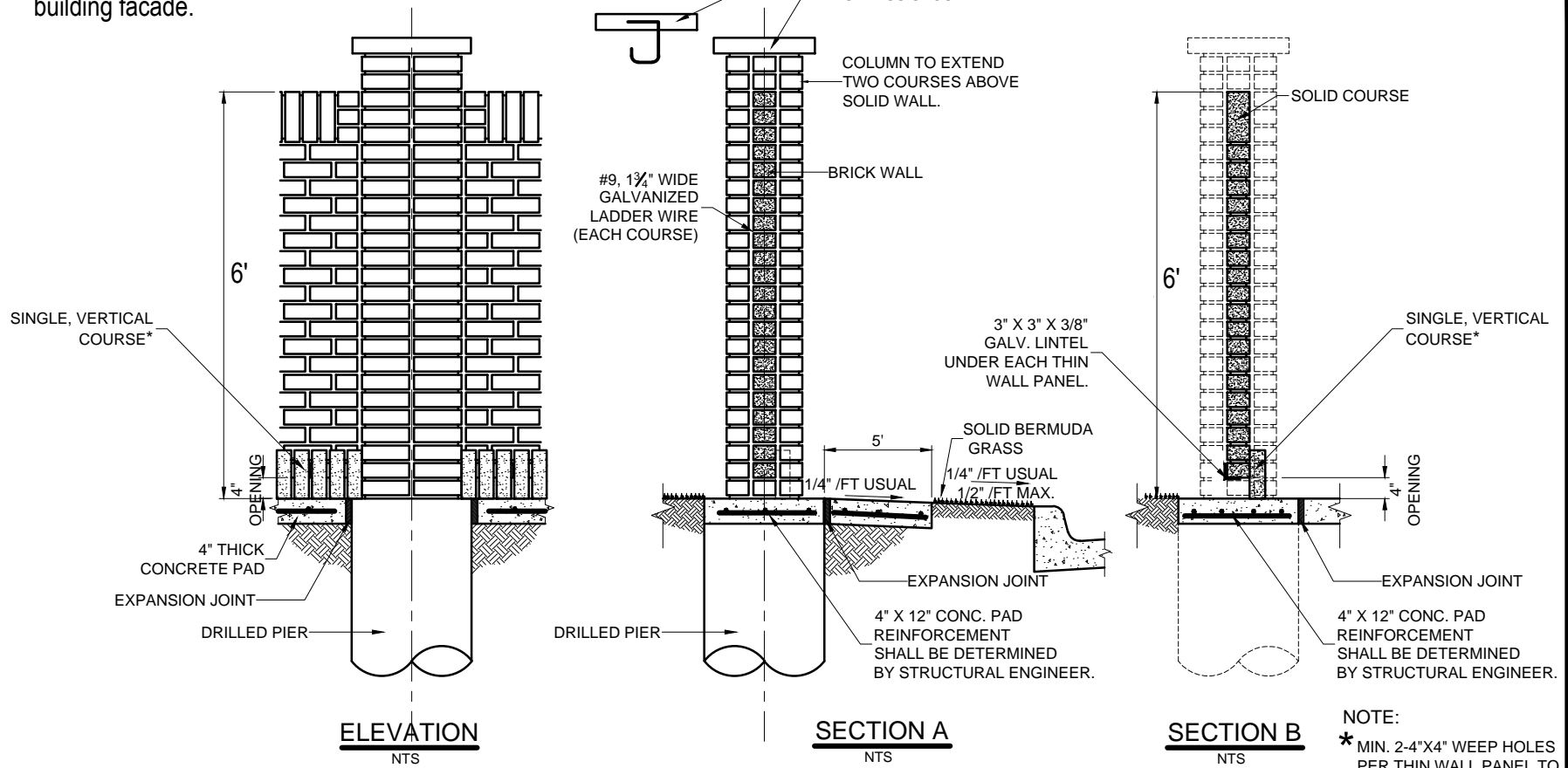
**4 DUMPSTER WALL SECTION**  
 SCALE: 1/2= 1'-0"



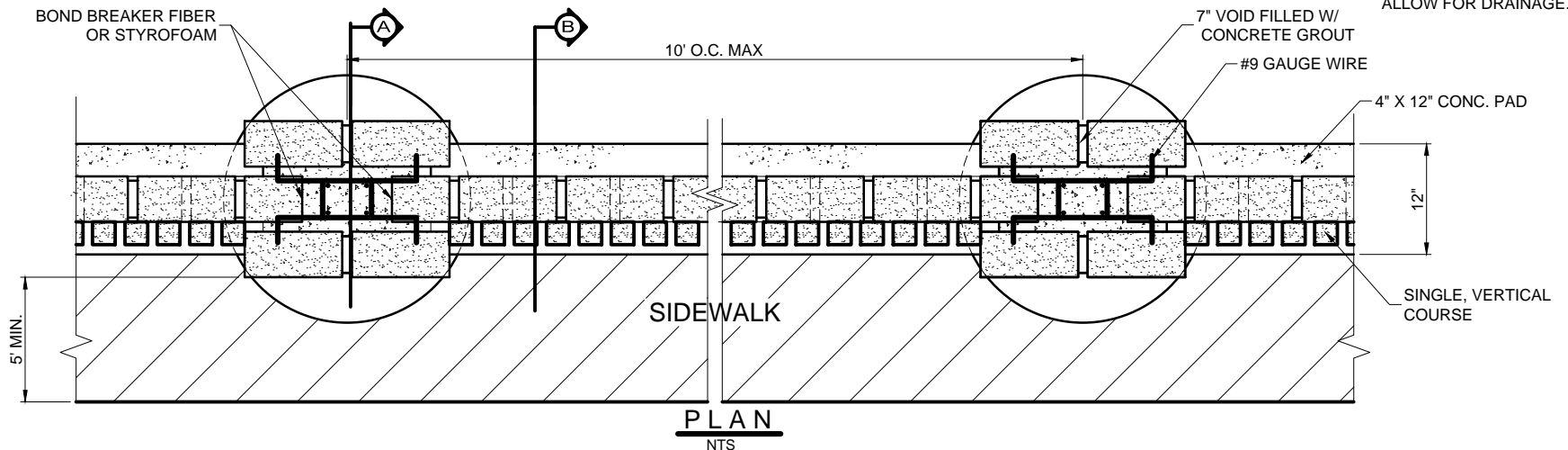
**5 DUMPSTER GATE PLAN DETAIL**  
 SCALE: 1"= 1'-0"



Facade of wall is required to match building facade.



NOTE:  
\* MIN. 2-4"X4" WEEP HOLES PER THIN WALL PANEL TO ALLOW FOR DRAINAGE.



BRICK OR STONE SCREENING WALL  
PLAN, ELEVATION & SECTION

DATE:  
SEPT 1991

REV DATE:  
MAY 2017

SHEET:  
SD-R03

STANDARD CONSTRUCTION DETAILS  
SCREENING WALL/RETAINING WALL