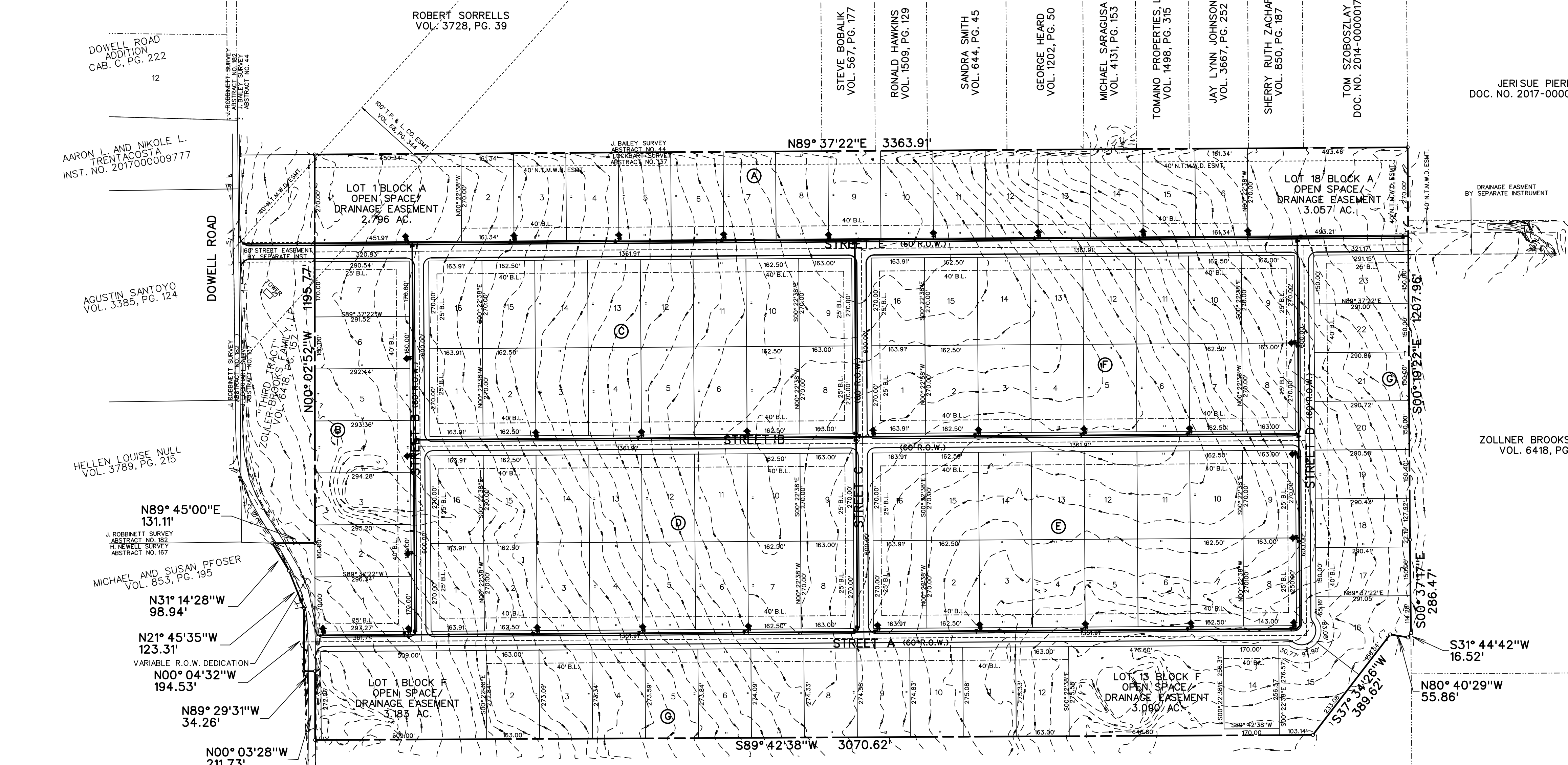
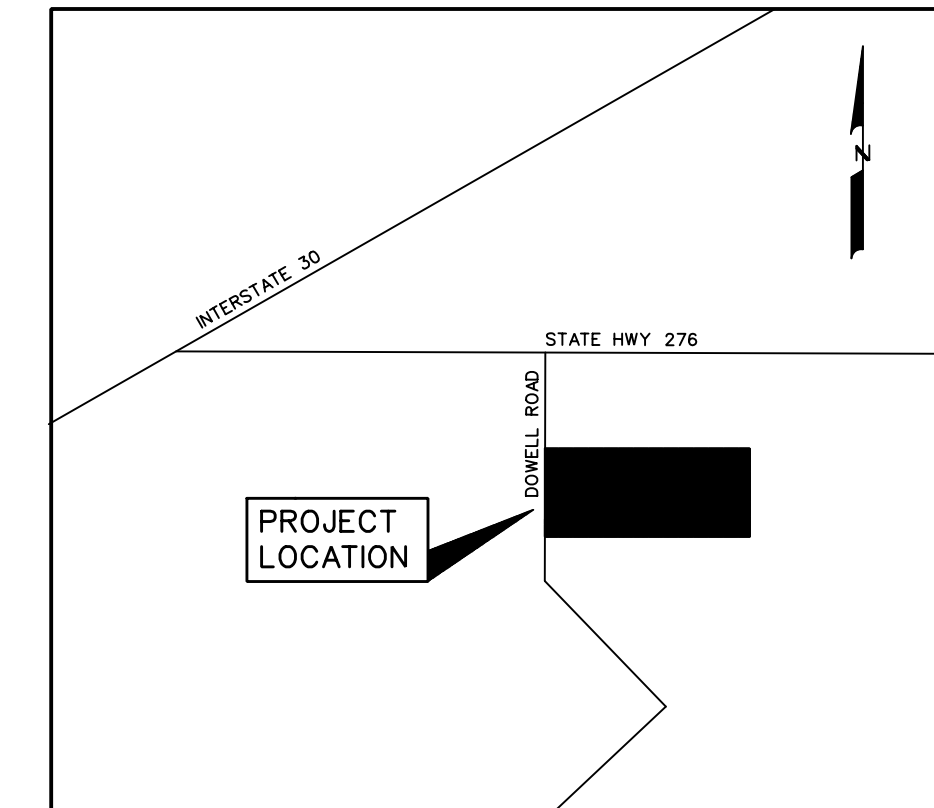


LEGEND
 B.L. - BUILDING LINE
 U.E. - UTILITY EASEMENT
 R.O.W. - RIGHT OF WAY
 H.O.A. - HOMEOWNERS ASSOCIATION

NOTES:
 ALL OPEN SPACE AREAS WILL BE MAINTAINED BY THE HOA.
 HOA/PROPERTY OWNER TO MAINTAIN, REPLACE AND REPAIR ALL DRAINAGE DETENTION AND OPEN SPACE EASEMENTS AND LOTS.

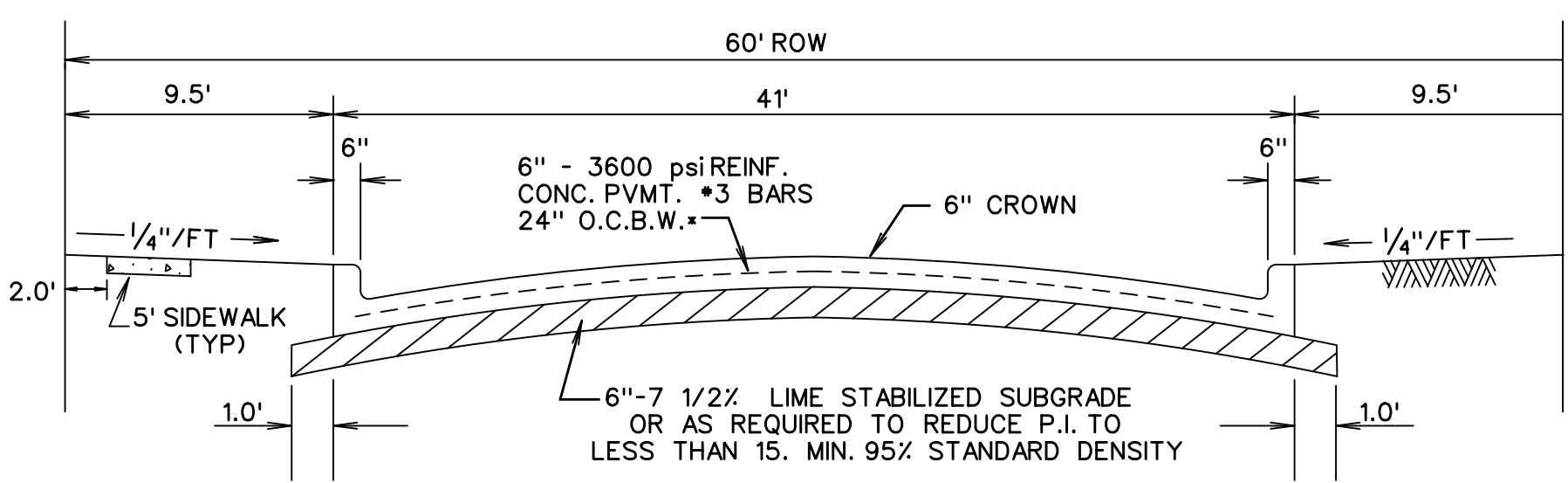
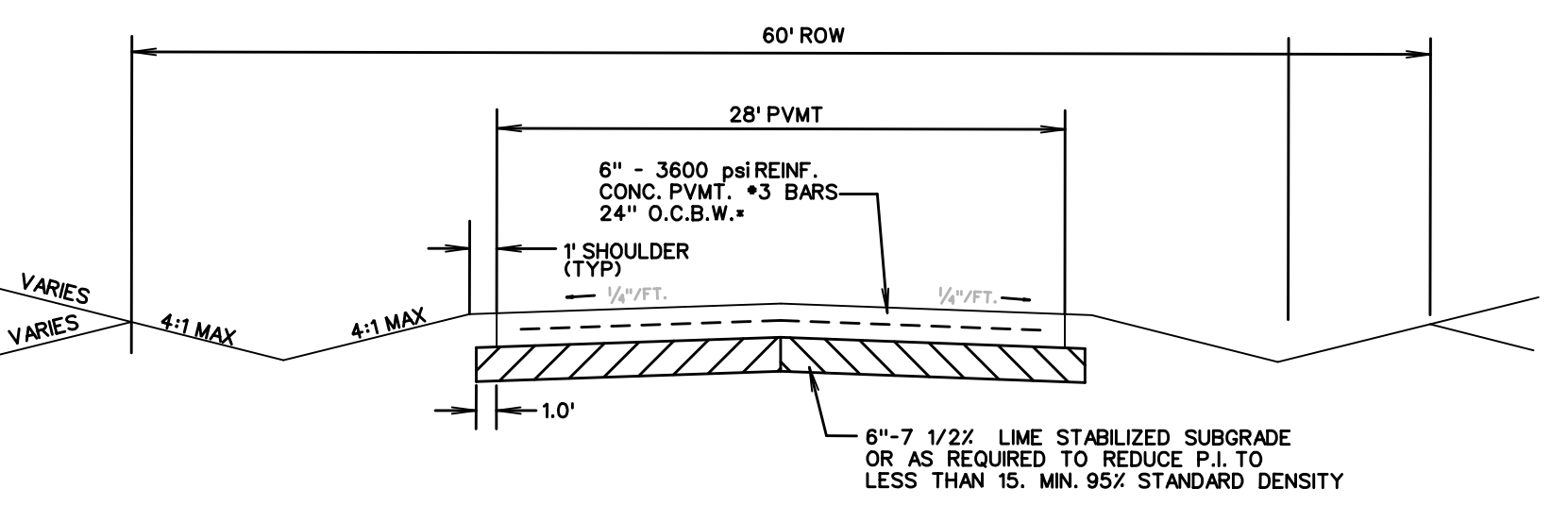
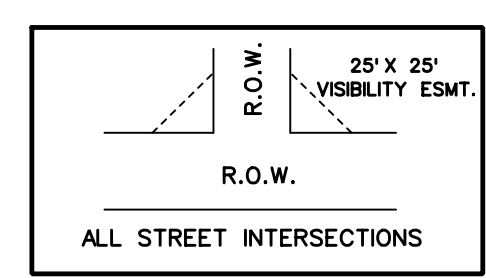


JERI SUE PIERRE
 DOC. NO. 2017-000021485

ZOLLNER BROOKS FAMILY
 VOL. 6418, PG. 146

ZOLLNER BROOKS FAMILY
 VOL. 6418, PG. 146

Emerson Farms										
Block A		Block C		Block E		Block G				
Lot	SF	Lot	SF	Lot	SF	Lot	SF	Lot	SF	
1*	121805	1	44255	1	44255	1*	138652			
2	43561	2	43875	2	43875	2	44476			
3	43561	3	43875	3	43875	3	44512			
4	43561	4	43875	4	43875	4	44549			
5	43561	5	43875	5	43875	5	44585			
6	43561	6	43875	6	43875	6	44622			
7	43561	7	43875	7	43875	7	44658			
8	43561	8	44010	8	43924	8	44694			
9	43561	9	44010	9	44010	9	44731			
10	43561	10	43875	10	43875	10	44767			
11	43561	11	43875	11	43875	11	44803			
12	43561	12	43875	12	43875	12	44839			
13	43561	13	43875	13	43875	13*	434638			
14	43561	14	43875	14	43875	14	43595			
15	43561	15	43875	15	43875	15	48784			
16	43561	16	44255	16	44255	16	49528			
17*	133196					17	43508			
						18	43587			
						19	43587			
						20	43597			
						21	43618			
						22	43639			
						23	43661			
						24				
						25				
						26				
						27				
						28				
						29				
						30				
						31				
						32				
						33				
						34				
						35				
						36				
						37				
						38				
						39				
						40				
						41				
						42				
						43				
						44				
						45				
						46				
						47				
						48				
						49				
						50				



TOTAL ACRES 138.756
 TOTAL RESIDENTIAL LOTS 107
 RESIDENTIAL DENSITY 1.29

SITE PLAN OF
EMERSON FARMS
 107 LOTS, BEING 138.756 ACRES
 SITUATED IN THE
 J. LOCKHART SURVEY, ABSTRACT NO. 167
 IN THE
 CITY OF ROCKWALL
 ROCKWALL COUNTY, TEXAS
 PREPARED BY
CORWIN ENGINEERING, INC.
 200 W. BELMONT, SUITE E
 ALLEN, TEXAS 75013
 972-396-1200
 OWNER
HARLAN PROPERTIES, INC.
 2404 TEXAS DRIVE, SUITE 103
 IRVING, TEXAS 75062
 JUNE 2019 SCALE 1" = 200'
 CASE #P2019-XXX