

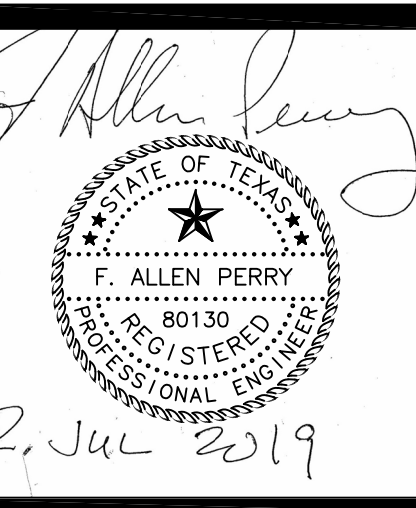
ALPACA  
Energy Solutions, Inc.

3736 Bee Cave Road  
Suite 1, #126  
Austin, Tx 78746

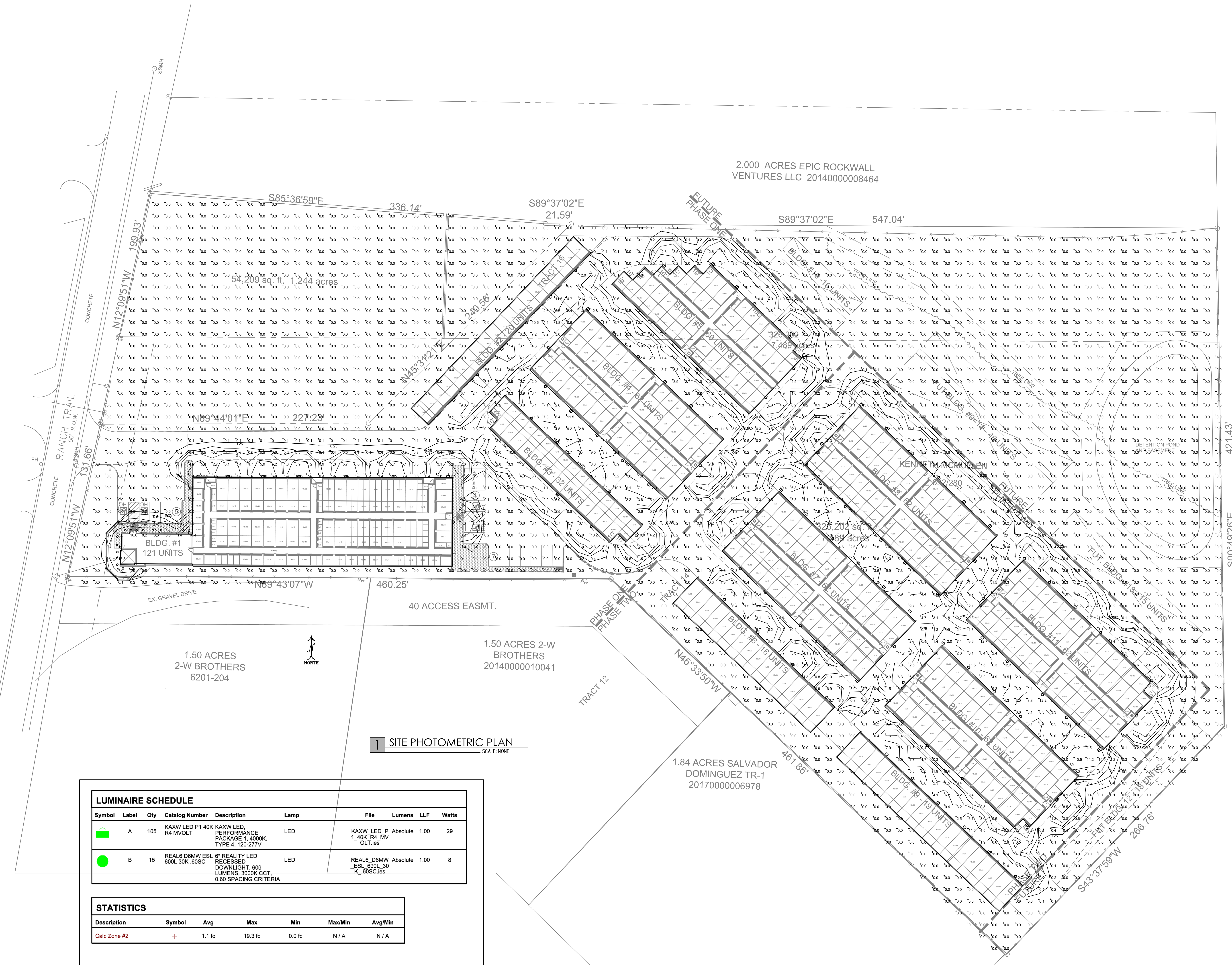
P: (512) 328-8999

www.alpacenergy.com  
MEP Engineering Services  
Business Reg. No. F-3616

THE DESIGNS AND IDEAS CONTAINED IN THIS DOCUMENT ARE THE SOLE PROPERTY OF ALPACA ENERGY SOLUTIONS, INC. USE OF THIS DOCUMENT, IN WHOLE OR PART, FOR ANY PURPOSE OTHER THAN THE PROJECT FOR WHICH IT IS PREPARED IS PROHIBITED. NOR SHALL THIS DOCUMENT BE ALTERED IN ANY WAY OR ASSIGNED TO ANY PARTY OTHER THAN THE ORIGINAL INTENDED CLIENT.



2.000 ACRES EPIC ROCKWALL  
VENTURES LLC 20140000008464



54,209 sq. ft. 1.244 acres

320,282 sq. ft. 7.489 acres

26,204 sq. ft. 0.601 acres

1.50 ACRES  
2-W BROTHERS  
6201-204

1.50 ACRES 2-W  
BROTHERS  
20140000010041

1.84 ACRES SALVADOR  
DOMINGUEZ TR-1  
20170000006978

1.84 ACR  
LAND PAR

1 SITE PHOTOMETRIC PLAN  
SCALE: NONE

| LUMINAIRE SCHEDULE |       |     |                              |   |      |  |
|--------------------|-------|-----|------------------------------|---|------|--|
| Symbol             | Label | Qty | Catalog Number               | Description   | Lamp | File Lumens LLF Watts                            |
|                    | A     | 105 | KAXW LED P1 40K R4 MVOLT     | KAXW LED, PERFORMANCE PACKAGE 1, 4000K, TYPE 4, 120-277V                        | LED  | KAXW_LED_P1_40K_R4_MV_OLT.ies Absolute 1.00 29   |
|                    | B     | 15  | REAL6 D6MW ESL 600L 30K 60SC | 6" REALITY LED RECESSED DOWNLIGHT, 600 LUMENS, 3000K CCT, 0.60 SPACING CRITERIA | LED  | REAL6_D6MW_ESL_600L_30K_60SC.ies Absolute 1.00 8 |

| STATISTICS   |        |        |         |        |         |         |
|--------------|--------|--------|---------|--------|---------|---------|
| Description  | Symbol | Avg    | Max     | Min    | Max/Min | Avg/Min |
| Calc Zone #2 | +      | 1.1 fc | 19.3 fc | 0.0 fc | N/A     | N/A     |

# Rockwall Self Storage

Rockwall, Texas

SHEET TITLE:  
PHOTOMETRIC  
SITE PLAN

REV. 1 7-2-19  
DATE: November 8, 2018

SHEET NUMBER:

E-401