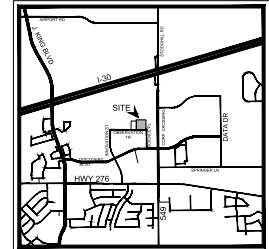
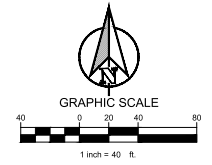


PARKING TABLE	
PARKING REQUIREMENTS	1 PER 500 SF OR 75 PER EMPLOYEE (50 EMPLOYEES)
PARKING REQUIRED	72 SPACES
PARKING PROVIDED	99 SPACES (5 ADA)
TRUCK PARKING	6 SPACES

SITE DATA TABLE	
SITE AREA	3.634 ACRES 158,286 SF
ZONING	LIGHT INDUSTRIAL
PROPOSED USE	INDUSTRIAL
BUILDING SIZE	35,525 SF
LOT COVERAGE	82.4 %
FLOOR TO AREA RATIO	0.22 : 1
BUILDING HEIGHT	1 STORY

NOTES:

1. A SEPARATE SIGNAGE PERMIT IS REQUIRED BY THE CITY OF ROCKWALL. WHERE SECURITY GATES ARE INSTALLED ACROSS FIRE LANE, THEY SHALL HAVE AN APPROVED MEANS OF EMERGENCY OPERATION.
2. THE SECURITY GATES AND THE EMERGENCY OPERATION SHALL BE MAINTAINED OPERATIONAL AT ALL TIMES. ELECTRIC GATE OPERATORS, WHERE PROVIDED, SHALL BE LISTED IN ACCORDANCE WITH UL 305. GATES INTENDED FOR AUTOMATIC OPERATION SHALL BE DESIGNED, CONSTRUCTED AND INSTALLED TO COMPLY WITH THE REQUIREMENTS OF ASTM F 2200.



VICINITY MAP
N.T.S.

CONSTRUCTION SCHEDULE	
[Symbol]	9" STANDARD DUTY CONCRETE
[Symbol]	HEAVY DUTY (6" CONCRETE)
[Symbol]	PROPOSED CONCRETE SIDEWALK
[Symbol]	PUBLIC PAVEMENT PER ROCKWALL STD.
[Symbol]	PROPOSED CONCRETE CURB AND GUTTER
[Symbol]	PROPOSED FIRE LANE
[Symbol]	PARKING COUNT

CONSTRUCTION SCHEDULE	
①	HANDICAP SYMBOL
②	PAVEMENT STRIPING
③	HANDICAP SIGN
④	PARKING STALL STRIPING, 4" WIDE
⑤	SIDEWALK, 5FT MIN. WIDTH
⑥	HANDICAP RAMPS
⑦	CURB STOP
⑧	SCREENING WALL

LIME MEDIA ROCKWALL, TX 75087 <small>LEGAL DESCRIPTION AND OR ADDRESS:</small> ROCKWALL TECHNOLOGY PARK, BLOCK 3, LOT 1. 3.634 ACRES (REPLAT 2010)	
<small>OWNER:</small> ROCKWALL ECONOMIC DEVELOPMENT PO BOX 968 ROCKWALL TX 75087	<small>DESIGN:</small> LJM <small>DRAWN:</small> LJM <small>CHECKED:</small> ASG <small>DATE:</small> 12/21/2018
<small>APPLICANT:</small> CLAYMOORE ENGINEERING, INC. 1903 CENTRAL DRIVE, SUITE #400 BEFORD, TX 75001 PH: 817.281.0572	<small>SHEET</small> SP-1 <small>FIG. NO. 2018-143</small>
<small>CASE NUMBER</small> SP2018-039	

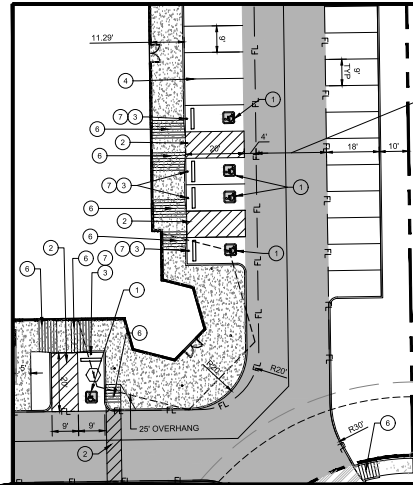
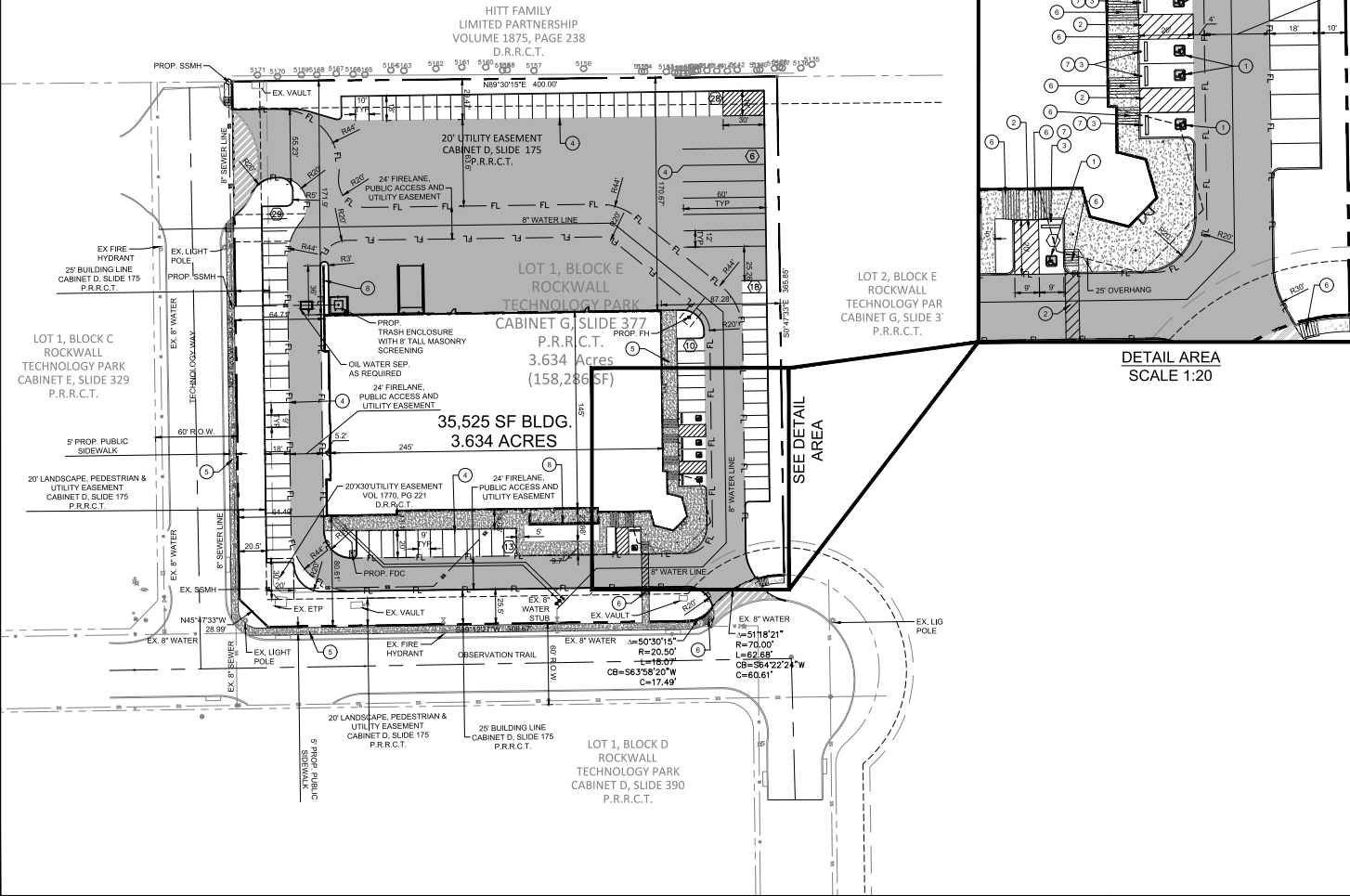


PRELIMINARY
 FOR REVIEW ONLY
 Not for construction purposes.
 CLAYMOORE ENGINEERING
 1903 CENTRAL DRIVE, SUITE #400
 BEFORD, TX 75001
 PHONE: 817.281.0572
 FAX: 817.281.0573
 E-MAIL: INFO@CMOENGINEERING.COM
 FILE NO. 125651 rev. 12/21/2018

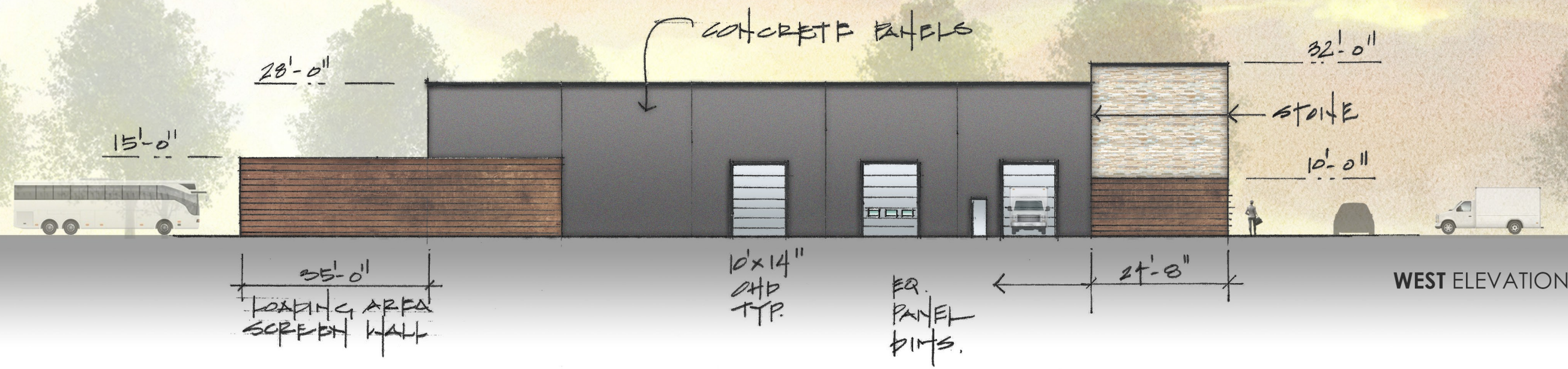
**LIME MEDIA
 TECHNOLOGY PARK
 2700 OBSERVATION TRAIL
 ROCKWALL, TX**

**CITY SITE
 PLAN**

PLOTTED BY: LYNN ROWLAND
 PLOT DATE: 12/20/2018 4:59 PM
 PLOT SCALE: 1/8"=1'-0"
 LAST SAVED: 12/20/2018 4:58 PM



DETAIL AREA
SCALE 1:20



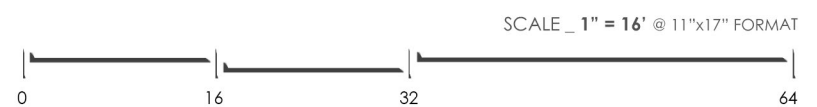
WEST ELEVATION



EAST ELEVATION

LIME MEDIA GROUP _ ROCKWALL, TX _ CONCEPT ELEVATIONS 02

THIS DRAWING IS FOR PRELIMINARY REFERENCE PURPOSES ONLY _ NOT TO BE USED FOR PERMITTING OR CONSTRUCTION



06 _ NOVEMBER _ 2018

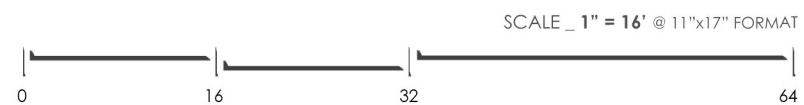
KILLIAN
 STUDIO OF ARCHITECTURE
 WWW.KENKILLIAN.COM
 TEL 214.457.3652 | EMAIL KRK@KENKILLIAN.COM
 10670 N. CENTRAL EXPWY. | STUDIO 600
 DALLAS, TX 75231



NORTH ELEVATION

LIME MEDIA GROUP _ ROCKWALL, TX _ CONCEPT ELEVATIONS 02

THIS DRAWING IS FOR PRELIMINARY REFERENCE PURPOSES ONLY _ NOT TO BE USED FOR PERMITTING OR CONSTRUCTION



06_NOVEMBER_2018

KILLIAN
 STUDIO OF ARCHITECTURE

WWW.KENKILLIAN.COM
 TEL 214.457.3652 | EMAIL KRK@KENKILLIAN.COM
 10670 N. CENTRAL EXPWY. | STUDIO 600
 DALLAS, TX 75231



TILT-WALL CONCRETE w
TEXTURED PAINT FINISH

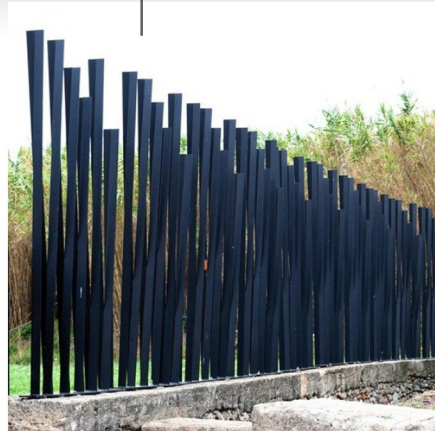
STONE

HEXAGON ENTRY FEATURE

COVERED | SCREENED PATIO AREA



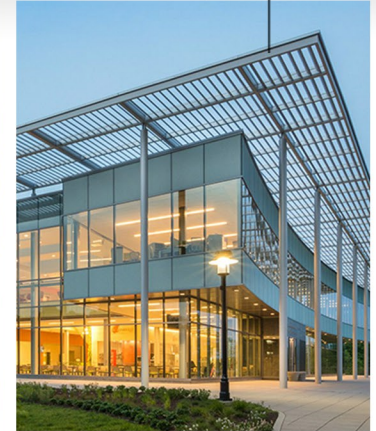
PAC-CLAD "WEATHERED STEEL" _
Pre-finished metal panels -
Flush panel system (not shown)



PROPOSED PATIO SCREEN _
Not shown for clarity



METAL MESH SCREEN

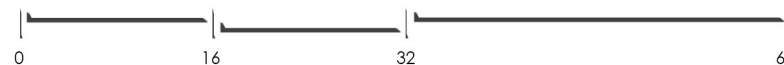


AIR-FOIL TRELLIS SUNSCREEN

LIME MEDIA GROUP _ ROCKWALL, TX _ CONCEPT SOUTH ELEVATION 01

THIS DRAWING IS FOR PRELIMINARY REFERENCE PURPOSES ONLY _ NOT TO BE USED FOR PERMITTING OR CONSTRUCTION

SCALE _ 1" = 16' @ 11"x17" FORMAT



KILLIAN

STUDIO OF ARCHITECTURE

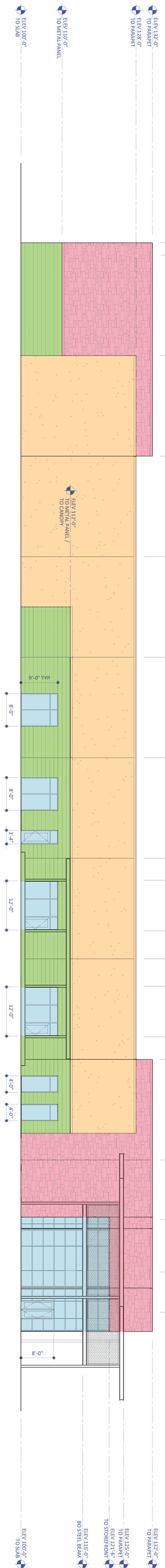
WWW.KENKILLIAN.COM

TEL 214.457.3652 | EMAIL KRK@KENKILLIAN.COM

10670 N. CENTRAL EXPWY. | STUDIO 600

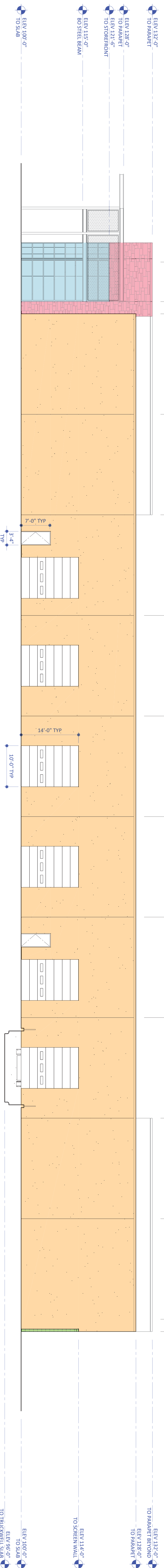
DALLAS, TX 75231

ADHERED STONE	1,203 SF	25.1%
TILT-WALL CONCRETE	3,705 SF	55.1%
METAL WALL PANELS	1,335 SF	19.8%
TOTAL	6,243 SF	100%



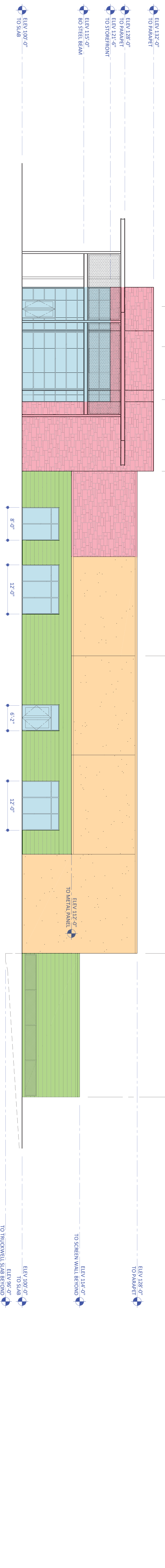
1 EXTERIOR ELEVATION | SOUTH

ADHERED STONE	2,033 SF	3.9%
TILT-WALL CONCRETE	5,000 SF	95.2%
METAL WALL PANELS	500 SF	9.1%
TOTAL	6,533 SF	100%



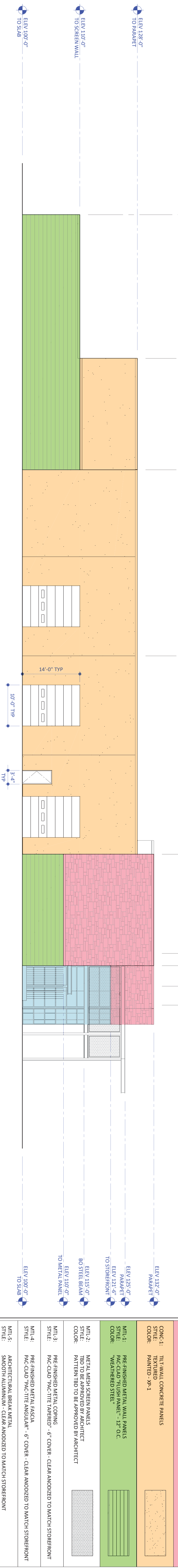
2 EXTERIOR ELEVATION | NORTH

ADHERED STONE	1,130 SF	27.9%
TILT-WALL CONCRETE	1,485 SF	43.0%
METAL WALL PANELS	1,265 SF	29.6%
TOTAL	4,200 SF	100%



3 EXTERIOR ELEVATION | EAST

ADHERED STONE	730 SF	18.5%
TILT-WALL CONCRETE	2,565 SF	57.5%
METAL WALL PANELS	1,405 SF	25.6%
TOTAL	4,700 SF	100%



4 EXTERIOR ELEVATION | WEST

MATERIAL AREA CALCULATIONS ALL EXTERIOR ELEVATIONS - COMBINED TOTAL	
ADHERED STONE	3,890 SF 17.8%
TILT-WALL CONCRETE	14,205 SF 65.0%
METAL WALL PANELS - "DARK GRAY"	3,770 SF 17.2%
TOTAL	21,865 SF 100%

EXTERIOR MATERIAL LEGEND	
ADHERED STONE (PINK)	ADHERED STONE (PINK)
TILT-WALL CONCRETE (ORANGE)	TILT-WALL CONCRETE (ORANGE)
METAL WALL PANELS (GREEN)	METAL WALL PANELS (GREEN)
METAL MESH SCREEN PANELS (BLUE)	METAL MESH SCREEN PANELS (BLUE)
METAL ARCHITECTURAL BREAK METAL (RED)	METAL ARCHITECTURAL BREAK METAL (RED)
EXTERIOR GLAZING IN ALUMINUM STOREFRONT (TEAL)	EXTERIOR GLAZING IN ALUMINUM STOREFRONT (TEAL)
INSULATED LOW E TO BE APPROVED BY ARCHITECT (TEAL)	INSULATED LOW E TO BE APPROVED BY ARCHITECT (TEAL)
FRAME STOREFRONT - CLEAR ANODIZED (TEAL)	FRAME STOREFRONT - CLEAR ANODIZED (TEAL)
FRAME STOREFRONT - CLEAR ANODIZED TO BE APPROVED BY ARCHITECT (TEAL)	FRAME STOREFRONT - CLEAR ANODIZED TO BE APPROVED BY ARCHITECT (TEAL)

ARCHITECT
KILLIAN
 STUDIO OF ARCHITECTURE
 11020 N. GERRARD AVENUE | STUDIO 600
 DALLAS, TEXAS 75231
 214.457.8652

OWNER
 LIME MEDIA GROUP

CONTRACTOR
 CIVIL ENGINEER
 CLAY MOORE ENGINEERING
 1305 CENTRAL DRIVE | SUITE 405
 BEFORD, TEXAS 76001
 817.281.0572
 CONTACT: WENDY MOORE, P.E.

STRUCTURAL ENGINEER
 MK ENGINEERS & ASSOCIATES, INC.
 400 CHESTNUT PLACE | SUITE 105
 PLANO, TEXAS 75075
 CONTACT: MOHAMMAD KABIR, P.E.

M/E/P ENGINEER
 SCHMIDT & STACY
 2711 HASKELL | SUITE 400
 DALLAS, TEXAS 75204
 CONTACT: STRIDER STEELE, P.E.

INTERIOR DESIGNER
 CONTACT: -

PROJECT
LIME MEDIA
OFFICE/WARHOUSE
 PROJECT ADDRESS
ROCKWALL TECHNOLOGY PARK
ROCKWALL, TEXAS 75082

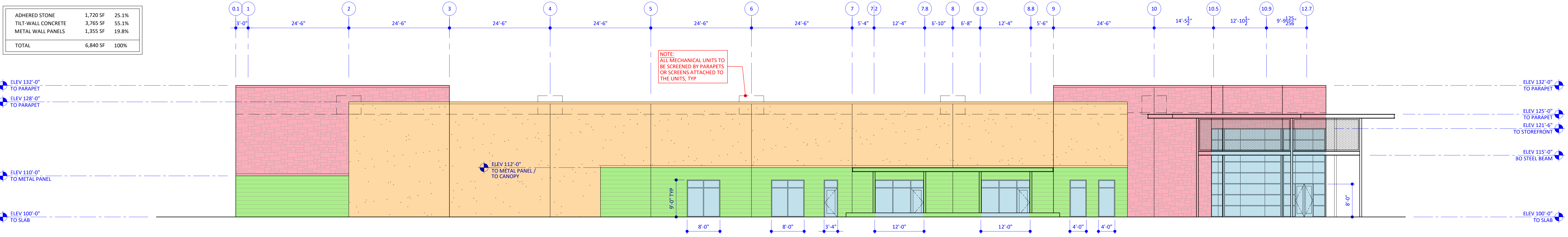
REV.	DATE	ISSUE
1	11.11.18	PROGRESS

2018.108
PROJECT NUMBER

EXTERIOR ELEVATIONS

A4.01
 SHEET NUMBER

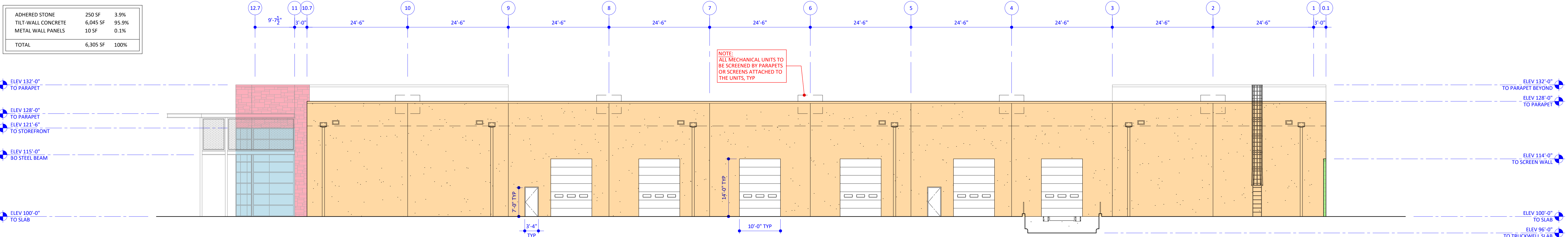
ADHERED STONE	1,720 SF	25.1%
TILT-WALL CONCRETE	3,765 SF	55.1%
METAL WALL PANELS	1,355 SF	19.8%
TOTAL	6,840 SF	100%



1 EXTERIOR ELEVATION | SOUTH

SCALE: 3/32"=1'-0"

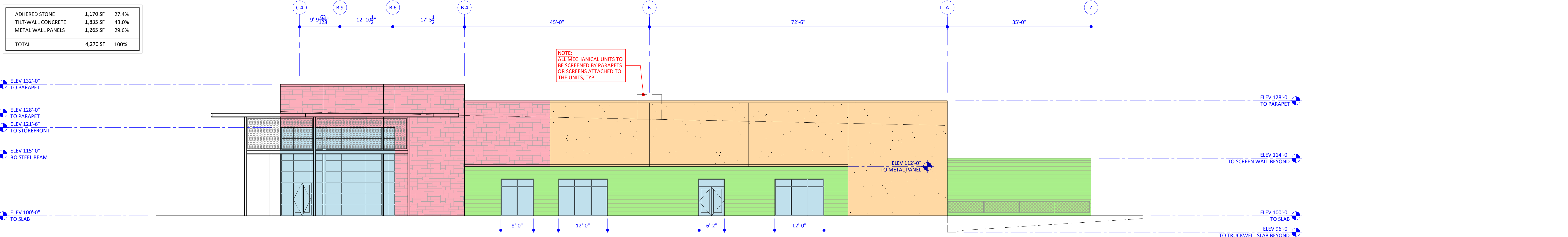
ADHERED STONE	250 SF	3.9%
TILT-WALL CONCRETE	6,045 SF	95.9%
METAL WALL PANELS	10 SF	0.1%
TOTAL	6,305 SF	100%



2 EXTERIOR ELEVATION | NORTH

SCALE: 3/32"=1'-0"

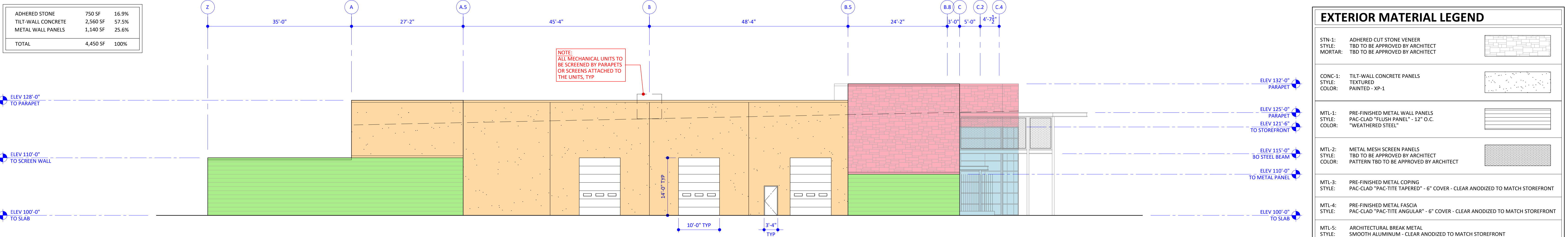
ADHERED STONE	1,170 SF	27.4%
TILT-WALL CONCRETE	1,835 SF	43.0%
METAL WALL PANELS	1,265 SF	29.6%
TOTAL	4,270 SF	100%



3 EXTERIOR ELEVATION | EAST

SCALE: 3/32"=1'-0"

ADHERED STONE	750 SF	16.9%
TILT-WALL CONCRETE	2,560 SF	57.5%
METAL WALL PANELS	1,140 SF	25.6%
TOTAL	4,450 SF	100%



4 EXTERIOR ELEVATION | WEST

SCALE: 3/32"=1'-0"

MATERIAL AREA CALCULATIONS ALL EXTERIOR ELEVATIONS - COMBINED TOTAL		
ADHERED STONE	3,890 SF	17.8%
TILT-WALL CONCRETE	14,205 SF	65.0%
METAL WALL PANELS - "DARK GRAY"	3,770 SF	17.2%
TOTAL	21,865 SF	100%

EXTERIOR MATERIAL LEGEND	
STN-1: ADHERED CUT STONE VENEER STYLE: TBD TO BE APPROVED BY ARCHITECT MORTAR: TBD TO BE APPROVED BY ARCHITECT	
CONC-1: TILT-WALL CONCRETE PANELS STYLE: TEXTURED COLOR: PAINTED - XP-1	
MTL-1: PRE-FINISHED METAL WALL PANELS STYLE: PAC-CLAD "FLUSH PANEL" - 12" O.C. COLOR: "WEATHERED STEEL"	
MTL-2: METAL MESH SCREEN PANELS STYLE: TBD TO BE APPROVED BY ARCHITECT PATTERN TBD TO BE APPROVED BY ARCHITECT	
MTL-3: PRE-FINISHED METAL COPING STYLE: PAC-CLAD "PAC-TITE TAPERED" - 6" COVER - CLEAR ANODIZED TO MATCH STOREFRONT	
MTL-4: PRE-FINISHED METAL FASCIA STYLE: PAC-CLAD "PAC-TITE ANGULAR" - 6" COVER - CLEAR ANODIZED TO MATCH STOREFRONT	
MTL-5: ARCHITECTURAL BREAK METAL STYLE: SMOOTH ALUMINUM - CLEAR ANODIZED TO MATCH STOREFRONT	
GL-1: EXTERIOR GLAZING IN ALUMINUM STOREFRONT STYLE: INSULATED, LOW-E COLOR: TINTED BLUE - TBD TO BE APPROVED BY ARCHITECT FRAME: STOREFRONT - CLEAR ANODIZED	
XP-1: "DARK GRAY" - TBD TO BE APPROVED BY ARCHITECT	
XP-2: CLEAR ANODIZED TO MATCH STOREFRONT - TBD TO BE APPROVED BY ARCHITECT	

REV.	DATE	ISSUE
-	12.04.18	PROGRESS

Doc: 05_2018_5:05pm - USER: MJC Frame
P:\02 - ARCH\18\014 - LIME MEDIA\02 - DRAWINGS\0401 - A4.01 EXTERIOR ELEVATIONS.dwg

PLANT LIST

CANOPY TREES			
CO	Cornus
LO	Lonicera
ERC	Eriobotrya
SO	Sorbus
ORNAMENTAL TREES			
CR	Crataegus
SHRUBS & ROUND CORNERS			
DA	Daphne
T	Taxus
CM	Camellia
CS	Ceanothus
R	Rosa
D	Daphne
CO	Cornus

CORRECTION LANDSCAPE CALCULATIONS

Tree No.	Size	Type	Tree No.	Size	Type
5135	15"	Hackberry	5176	R 12"	Bois d arc
5136	8"	Hackberry	5177	R 7" 7" 8"	Bois d arc
5137	8"	Hackberry	5178	R 14"	Bois d arc
5138	10"	Hackberry	5179	R 6" 8"	Bois d arc
5139	16"	Hackberry	5180	R 5" 6" 8" 8"	Bois d arc
5140	16"	Hackberry	5181	R 14"	Bois d arc
5141	8"	Hackberry	5182	R 8"	Hackberry
5142	9"	Hackberry	5183	R 10"	Bois d arc
5143	10"	Hackberry	5184	R 6" 6"	Cedar
5144	12"	Hackberry	5185	R 6"	Cedar
5145	8" 8"	Hackberry	5186	R 8"	Cedar
5146	10"	Hackberry	5187	R 12"	Bois d arc
5147	7"	Hackberry	5188	R 14"	Cedar
5148	9"	Hackberry	5189	R 14"	Cedar
5149	9"	Hackberry	5190	R 8"	Cedar
5150	7" 11"	Hackberry	5191	R 15"	Cedar
5151	10"	Hackberry	5192	R 10"	Cedar
5152	9"	Hackberry	5193	R 10"	Hackberry
5153	8" 10"	Hackberry	5194	R 8"	Cedar
5154	8"	Hackberry	5195	R 6"	Cedar
5155	8"	Hackberry	5196	R 8"	Cedar
5156	36"	Hackberry	5197	R 10"	Cedar
5157	7"	Hackberry	5198	R 10"	Cedar
5158	8"	Hackberry	5199	R 10" 10"	Cedar
5159	8"	Hackberry	5200	R 6"	Cedar
5160	8"	Hackberry	5201	R 7"	Cedar
5161	9"	Hackberry	5202	R 7"	Cedar
5162	8" 9"	Hackberry	5203	R 7"	Cedar
5163	8" 10"	Hackberry	5204	R 12"	Cedar
5164	11"	Hackberry	5205	R 8"	Cedar
5165	7" 10"	Hackberry	5206	R 10"	Cedar
5166	10"	Hackberry	5207	R 8"	Cedar
5167	9"	Hackberry	5208	R 8"	Cedar
5168	9"	Hackberry	5209	R 8"	Cedar
5169	12"	Hackberry	5210	R 8" 8"	Cedar
5170	11"	Hackberry	5211	R 14"	Cedar
5171	8"	Hackberry	5212	R 14"	Cedar
5172	R 6"	Cedar	5213	R 14"	Cedar
5173	R 8"	Cedar	5214	R 10"	Cedar
5174	R 8"	Cedar	5215	R 10"	Cedar
5175	R 6" 8"	Cedar	5216	R 10"	Cedar

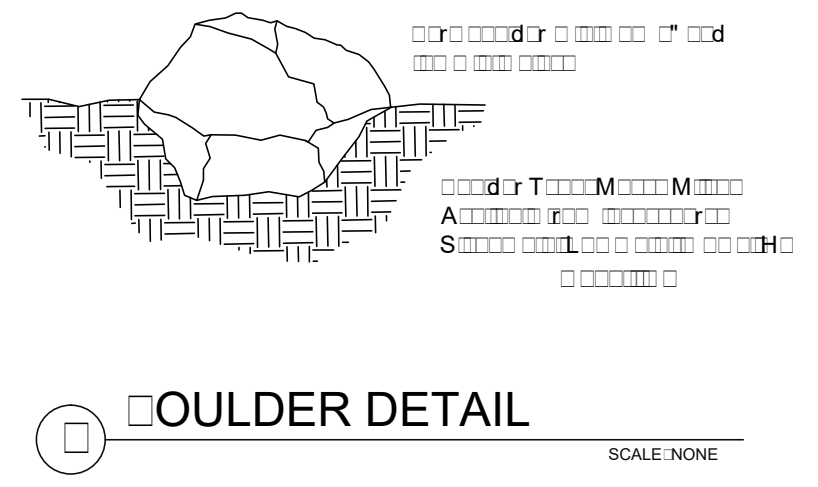
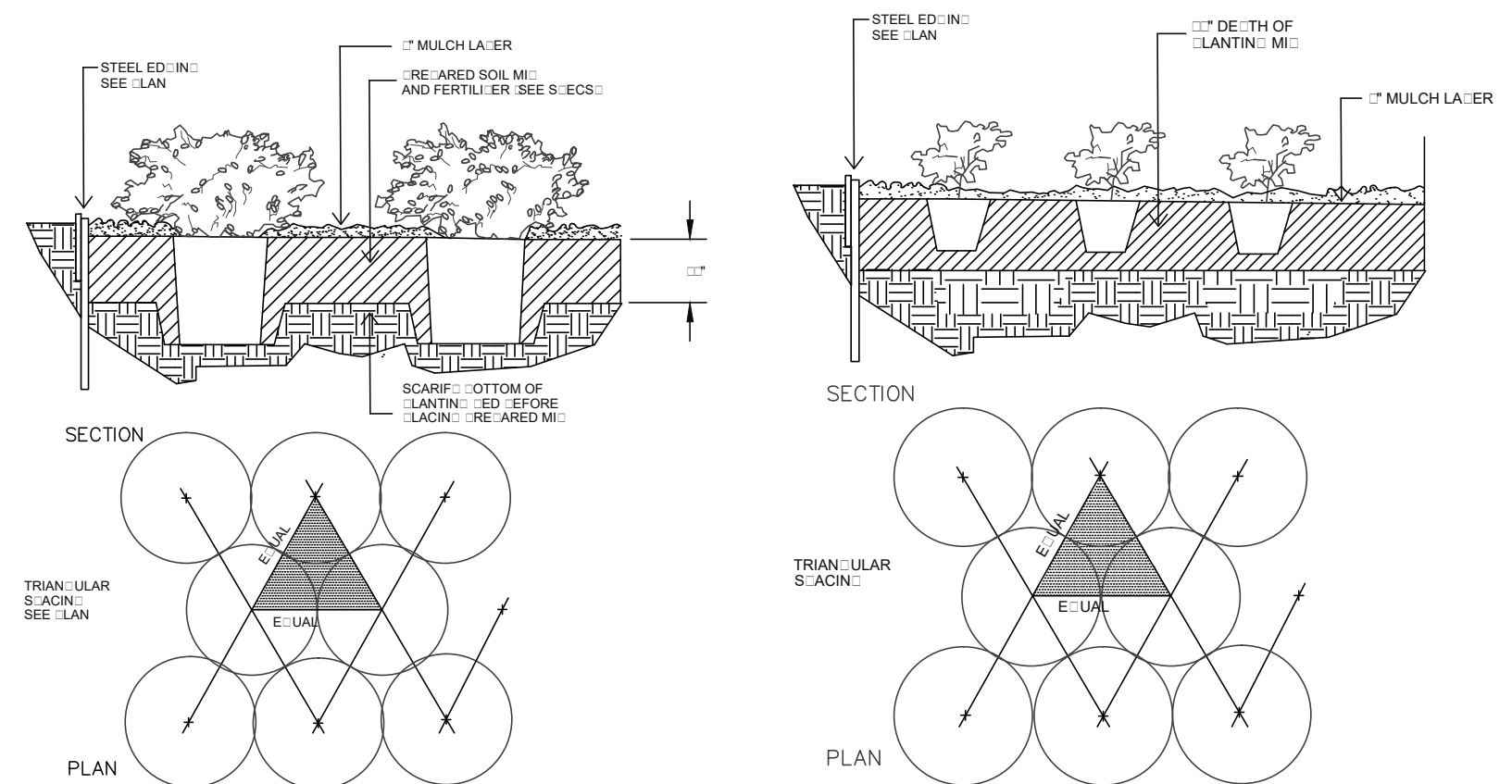
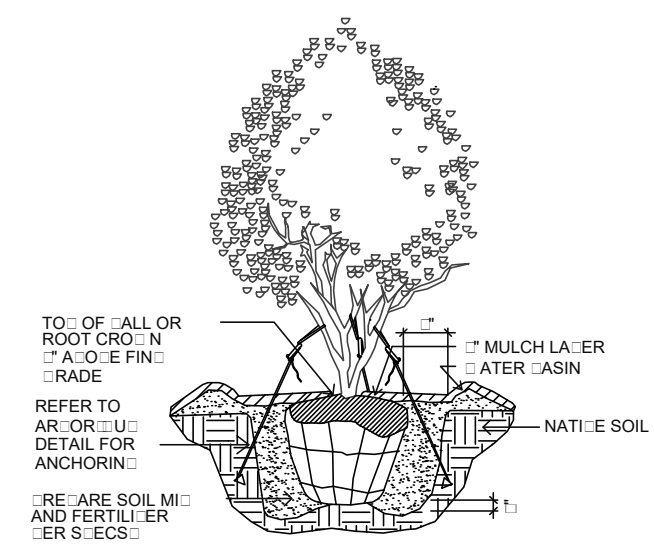
TREE MITIGATION

Tree No.	Size	Type
5135	15"	Hackberry
5136	8"	Hackberry
5137	8"	Hackberry
5138	10"	Hackberry
5139	16"	Hackberry
5140	16"	Hackberry
5141	8"	Hackberry
5142	9"	Hackberry
5143	10"	Hackberry
5144	12"	Hackberry
5145	8" 8"	Hackberry
5146	10"	Hackberry
5147	7"	Hackberry
5148	9"	Hackberry
5149	9"	Hackberry
5150	7" 11"	Hackberry
5151	10"	Hackberry
5152	9"	Hackberry
5153	8" 10"	Hackberry
5154	8"	Hackberry
5155	8"	Hackberry
5156	36"	Hackberry
5157	7"	Hackberry
5158	8"	Hackberry
5159	8"	Hackberry
5160	8"	Hackberry
5161	9"	Hackberry
5162	8" 9"	Hackberry
5163	8" 10"	Hackberry
5164	11"	Hackberry
5165	7" 10"	Hackberry
5166	10"	Hackberry
5167	9"	Hackberry
5168	9"	Hackberry
5169	12"	Hackberry
5170	11"	Hackberry
5171	8"	Hackberry
5172	R 6"	Cedar
5173	R 8"	Cedar
5174	R 8"	Cedar
5175	R 6" 8"	Cedar



ROOT ANCHOR™ BELOW GRADE SAFETY STAKE SIZING CHART

ITEM #	DESCRIPTION	NAIL LENGTH X 3PC (INCLUDED)	ITEM #	DESCRIPTION	NAIL LENGTH X 3PC (INCLUDED)
5 BG	5 GALLON OR 10" ROOTBALL	#4 X 24"	100 BG	85/100 GALLON OR 36" ROOTBALL	#5 X 48"
15 BG	10/15 GALLON OR 17" ROOTBALL	#4 X 36"	150 BG	150 GALLON OR 42" ROOTBALL	#5 X 60"
30 BG	20/30 GALLON OR 22" ROOTBALL	#4 X 36"	200 BG	200 GALLON OR 48" ROOTBALL	#5 X 72"
45/65 BG	45/65 GALLON OR 27-30" ROOTBALL	#4 X 48"	300 BG	300 GALLON OR 54" ROOTBALL	#5 X 72"



LIME MEDIA ROCKWALL TECHNOLOGY PARK ROCKWALL, TX
 LEGAL DESCRIPTION AND OR ADDRESS:
 ROCKWALL TECHNOLOGY PARK
 BLOCK 10 LOT 10
 10 ACRES (REPLAT)
 OWNER:
 ROCKWALL ECONOMIC DEVELOPMENT
 1000 CENTRAL DRIVE SUITE 1000
 EDWARDSVILLE, IL 60126
 APPLICANT:
 CLAYMOORE ENGINEERING INC
 1000 CENTRAL DRIVE SUITE 1000
 EDWARDSVILLE, IL 60126
 SHEET
L-2
 CASE NUMBER
 S000000

LANDSCAPE DETAILS
 DESIGNED: LRR
 DRAWN: LRR
 CHECKED: ASD
 DATE: 12/5/18
 SHEET
L-2
 FROM: 1000

PLOTTED BY: SCOTT WILDER
 PLOT DATE: 12/5/2018 3:45 PM
 LOCATION: C:\USERS\SCOTT WILDER\DOCUMENTS\AUTOCAD_LRD\LIME MEDIA\LIME MEDIA_L1.S.DWG
 LAST SAVED: 12/5/2018 2:11 PM

DESCRIPTION

The classic lines and sophisticated construction of Vision Site LED luminaire makes it an ideal complement to site design. Offering LED technology across the VXS and VXM, the Vision Site luminaire provides true family scaling in both physical form and lumen capability for architectural site lighting applications. UL/cUL listed for use in wet locations.

Catalog #		Type
Project		
Comments		Date
Prepared by		

SPECIFICATION FEATURES

Construction

HOUSING: Heavy-wall one-piece, die-cast aluminum housing has precise tolerance control and repeatability in manufacturing. Housing features a partition wall that isolates driver components for cooler operation. Integral aluminum heat sink provides superior thermal heat transfer in +40°C ambient environments. **DOOR:** One-piece, die-cast aluminum construction with tool-less release latch. Door swings down and is retained on two catch hinges. **GASKET:** Continuous gasket provided to seal housing to optic tray. **LENS:** Downlight lens is LED board integrated acrylic over-optics, each individually sealed for IP66 rating. **HARDWARE:** Tool-less release door latch is stainless steel/aluminum construction, painted to match housing and allows access to internal housing and electrical components.

Optics

Choice of twelve patented, high-efficiency AccuLED Optics™ distributions. Optics are precisely designed to shape the light output, maximizing efficiency and application spacing. AccuLED Optics technology creates consistent distributions with the scalability to meet customized application requirements. Offered Standard in 4000K (+/- 275K) CCT and minimum 70 CRI. Optional

3000K CCT and 5000K CCT. For the ultimate level of spill light control, an optional house-side shield accessory can be field or factory installed. The house-side shield is designed to seamlessly integrate with the SL2, SL3 or SL4 optics.

Electrical

LED drivers mount to die-cast aluminum back housing for optimal heat sinking, operation efficacy, and prolonged life. Standard drivers feature electronic universal voltage (120-277V 50/60Hz), 347V 60Hz or 480V 60Hz operation. 480V is compatible for use with 480V Wye systems only. Greater than 0.9 power factor, less than 20% harmonic distortion, and is suitable for operation in -40°C to 40°C ambient environments. All fixtures are shipped standard with 10kV/10kA common – and differential – mode surge protection. LightBARs feature and IP66 enclosure rating and maintain greater than 95% lumen maintenance at 60,000 hours per IESNA TM-21. Occupancy sensor and dimming options available.

Mounting

ARM: One-piece extruded aluminum arm available in standard 5" lengths (VXS) and 6" and 10" (VXM). Internal bolts guides allow easy positioning of fixture during installation to pole or wall surface. **STRUCTURAL**

MOUNT: Die-cast aluminum cleat factory mounted to luminaire and finished in luminaire color. Stainless steel structural rod measures 1/2" in diameter and is provided in luminaire finish color or optional natural finish. Product works in conjunction with dedicated accessory arms (order separately). Invue poles are provided pre-drilled when structural mount option drill pattern is specified. See Invue poles section for complete selection. Additional mounting accessories available.

Finish

Housing is finished in five-stage super premium TGIC polyester powder coat paint, 2.5 mil nominal thickness for superior protection against fade and wear. LightBAR cover plates are standard white and may be specified to match finish of luminaire housing. Standard colors include black, bronze, grey, white, dark platinum and graphite metallic. RAL and custom color matches available. Consult Outdoor Architectural Colors brochure for a complete selection.

Warranty

Five-year warranty.



VXS/VXM VISION SITE LED

1 - 6 LightBARs
Solid State LED

ARCHITECTURAL
AREA/SITE LUMINAIRE



CERTIFICATION DATA

UL/cUL Listed
ISO 9001
IP66 LightBARs
LM79 / LM80 Compliant
1.5G Vibration Tested
DesignLights Consortium® Qualified*

ENERGY DATA

Electronic LED Driver
>0.9 Power Factor
<20% Total Harmonic Distortion
120-277V/50 & 60Hz, 347V/60Hz,
480V/60Hz
-40°C Minimum Temperature
40°C Ambient Temperature Rating

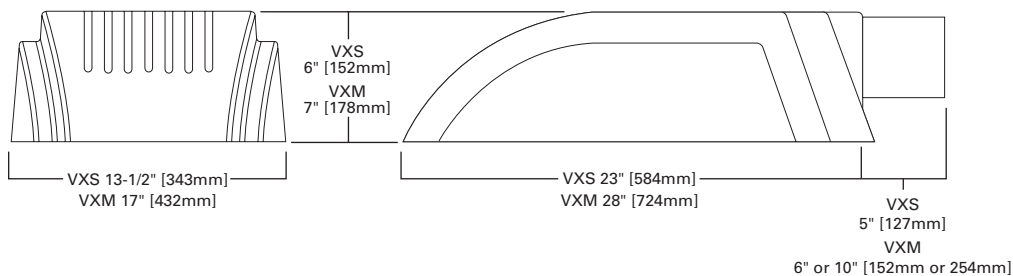
EPA

Effective Projected Area: (Sq. Ft.)
VXS Single: 1.18 w/Arm
VXS Single Structural: 1.27 w/Arm
VXM Single: 1.89 w/Arm
VXM Single Structural: 2.09 w/Arm

SHIPPING DATA

Approximate Net Weight:
VXS: 35 lbs. (15.91 kgs.)
VXM: 51 lbs. (23.18 kgs.)

DIMENSIONS



POWER AND LUMENS BY BAR COUNT (21 LED LIGHTBAR)

Number of LightBARs		E01	E02	E03	E04	E05	E06
Drive Current		350mA Drive Current					
Power (Watts)		25W	52W	75W	97W	127W	150W
Current @ 120V (A)		0.22	0.44	0.63	0.82	1.07	1.26
Current @ 277V (A)		0.10	0.20	0.28	0.36	0.48	0.56
Power (Watts)		31W	58W	82W	99W	132W	159W
Current @ 347V (A)		0.11	0.19	0.28	0.29	0.39	0.48
Current @ 480V (A)		0.09	0.15	0.20	0.21	0.30	0.36
T2	Lumens	3,064	6,128	9,192	12,255	15,319	18,383
	BUG Rating	B1-U0-G1	B2-U0-G2	B2-U0-G2	B3-U0-G3	B3-U0-G3	B3-U0-G3
T3	Lumens	3,084	6,168	9,252	12,336	15,420	18,504
	BUG Rating	B1-U0-G1	B2-U0-G2	B3-U0-G3	B3-U0-G3	B3-U0-G3	B3-U0-G3
T4	Lumens	3,022	6,044	9,066	12,088	15,110	18,132
	BUG Rating	B1-U0-G1	B1-U0-G2	B2-U0-G2	B2-U0-G2	B2-U0-G3	B3-U0-G3
5MQ	Lumens	3,224	6,448	9,672	12,896	16,120	19,344
	BUG Rating	B2-U0-G1	B3-U0-G1	B3-U0-G2	B4-U0-G2	B4-U0-G2	B4-U0-G2
5WQ	Lumens	3,184	6,368	9,551	12,735	15,919	19,103
	BUG Rating	B2-U0-G1	B3-U0-G1	B4-U0-G2	B4-U0-G2	B4-U0-G2	B5-U0-G3
5XQ	Lumens	3,181	6,361	9,542	12,722	15,903	19,083
	BUG Rating	B2-U0-G2	B3-U0-G2	B3-U0-G3	B4-U0-G3	B4-U0-G4	B4-U0-G4
SL2	Lumens	3,055	6,110	9,165	12,220	15,275	18,331
	BUG Rating	B1-U0-G1	B1-U0-G2	B2-U0-G2	B2-U0-G2	B3-U0-G3	B3-U0-G3
SL3	Lumens	3,036	6,072	9,108	12,145	15,181	18,217
	BUG Rating	B1-U0-G1	B1-U0-G2	B2-U0-G2	B2-U0-G2	B2-U0-G3	B3-U0-G3
SL4	Lumens	2,954	5,908	8,862	11,816	14,771	17,725
	BUG Rating	B1-U0-G1	B1-U0-G2	B2-U0-G2	B2-U0-G2	B2-U0-G3	B3-U0-G3
RW	Lumens	3,124	6,248	9,372	12,496	15,620	18,744
	BUG Rating	B2-U0-G2	B3-U0-G3	B3-U0-G3	B4-U0-G4	B4-U0-G4	B4-U0-G4
SLL/SLR	Lumens	2,782	5,565	8,347	11,130	13,912	16,695
	BUG Rating	B1-U0-G1	B1-U0-G2	B1-U0-G3	B2-U0-G3	B2-U0-G3	B2-U0-G4

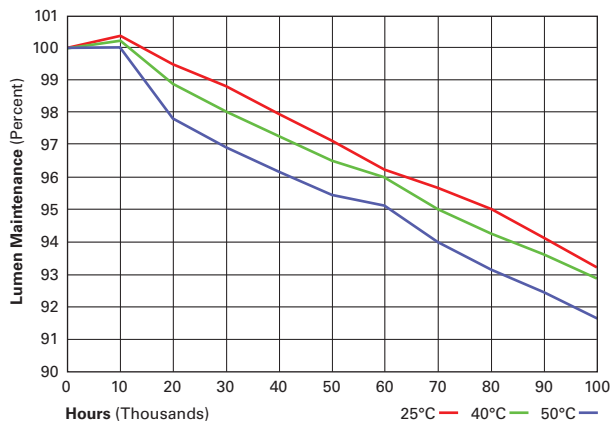
LUMEN MAINTENANCE

Ambient Temperature	25,000 Hours*	50,000 Hours*	60,000 Hours*	100,000 Hours	Theoretical L70 (Hours)
25°C	> 99%	> 97%	> 96%	> 93%	> 450,000
40°C	> 98%	> 97%	> 96%	> 92%	> 425,000
50°C	> 97%	> 96%	> 95%	> 91%	> 400,000

* Per IESNA TM-21 data.

LUMEN MULTIPLIER

Ambient Temperature	Lumen Multiplier
10°C	1.02
15°C	1.01
25°C	1.00
40°C	0.99



POWER AND LUMENS BY BAR COUNT (7 LED LIGHTBAR)

Number of LightBARs		F01	F02	F03	F04	F05	F06
Drive Current		1A Drive Current					
Power (Watts)		26W	55W	78W	102W	133W	157W
Current @ 120V (A)		0.22	0.46	0.66	0.86	1.12	1.31
Current @ 277V (A)		0.10	0.21	0.29	0.37	0.50	0.58
Power (Watts)		32W	60W	85W	105W	137W	164W
Current @ 347V (A)		0.11	0.19	0.28	0.30	0.41	0.49
Current @ 480V (A)		0.09	0.15	0.21	0.22	0.31	0.37
T2	Lumens	2,529	5,059	7,588	10,117	12,646	15,176
	BUG Rating	B1-U0-G1	B2-U0-G2	B2-U0-G2	B3-U0-G3	B3-U0-G3	B3-U0-G3
T3	Lumens	2,546	5,092	7,638	10,183	12,729	15,275
	BUG Rating	B1-U0-G1	B2-U0-G2	B2-U0-G2	B3-U0-G3	B3-U0-G3	B3-U0-G3
T4	Lumens	2,495	4,990	7,484	9,979	12,474	14,969
	BUG Rating	B1-U0-G1	B1-U0-G2	B1-U0-G2	B2-U0-G2	B2-U0-G2	B2-U0-G3
5MQ	Lumens	2,662	5,323	7,985	10,646	13,308	15,969
	BUG Rating	B2-U0-G1	B3-U0-G1	B3-U0-G1	B3-U0-G2	B4-U0-G2	B4-U0-G2
5WQ	Lumens	2,628	5,257	7,885	10,513	13,142	15,770
	BUG Rating	B2-U0-G1	B3-U0-G1	B3-U0-G2	B4-U0-G2	B4-U0-G2	B4-U0-G2
5XQ	Lumens	2,626	5,251	7,877	10,502	13,128	15,754
	BUG Rating	B2-U0-G1	B3-U0-G2	B3-U0-G3	B4-U0-G3	B4-U0-G3	B4-U0-G4
SL2	Lumens	2,522	5,044	7,566	10,088	12,610	15,132
	BUG Rating	B1-U0-G1	B1-U0-G1	B2-U0-G2	B2-U0-G2	B2-U0-G2	B3-U0-G3
SL3	Lumens	2,506	5,013	7,519	10,026	12,532	15,039
	BUG Rating	B1-U0-G1	B1-U0-G1	B1-U0-G2	B2-U0-G2	B2-U0-G2	B2-U0-G3
SL4	Lumens	2,439	4,877	7,316	9,755	12,193	14,632
	BUG Rating	B1-U0-G1	B1-U0-G2	B1-U0-G2	B2-U0-G2	B2-U0-G2	B2-U0-G3
RW	Lumens	2,579	5,158	7,737	10,316	12,894	15,473
	BUG Rating	B2-U0-G2	B3-U0-G3	B3-U0-G3	B3-U0-G3	B4-U0-G4	B4-U0-G4
SLL/SLR	Lumens	2,297	4,594	6,891	9,188	11,485	13,782
	BUG Rating	B1-U0-G1	B1-U0-G2	B1-U0-G2	B1-U0-G3	B2-U0-G3	B2-U0-G3

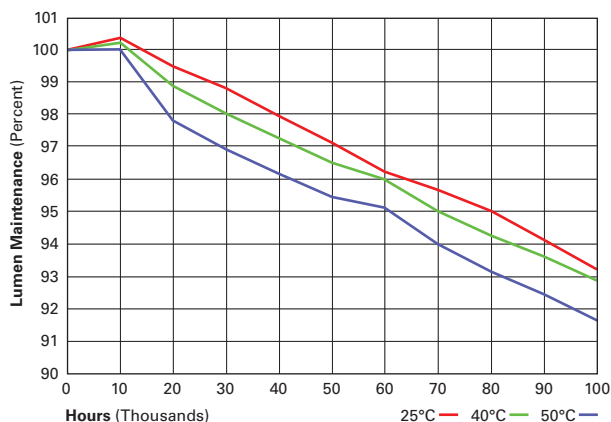
LUMEN MAINTENANCE

Ambient Temperature	25,000 Hours*	50,000 Hours*	60,000 Hours*	100,000 Hours	Theoretical L70 (Hours)
25°C	> 99%	> 97%	> 96%	> 93%	> 450,000
40°C	> 98%	> 97%	> 96%	> 92%	> 425,000
50°C	> 97%	> 96%	> 95%	> 91%	> 400,000

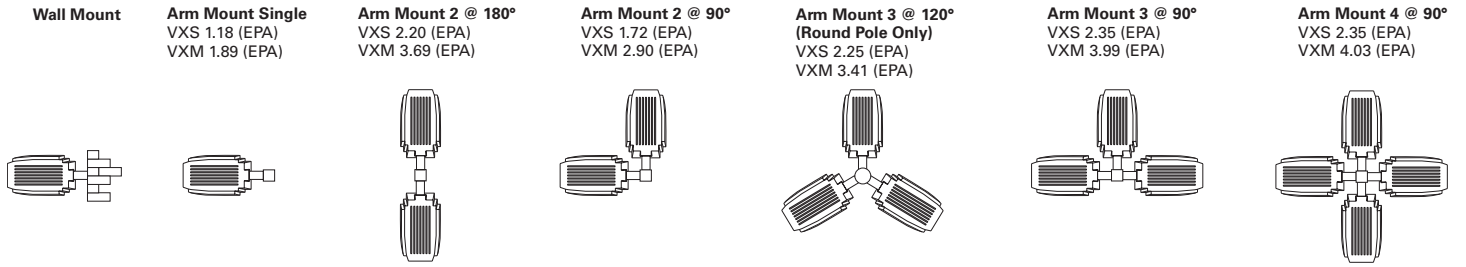
* Per IESNA TM-21 data.

LUMEN MULTIPLIER

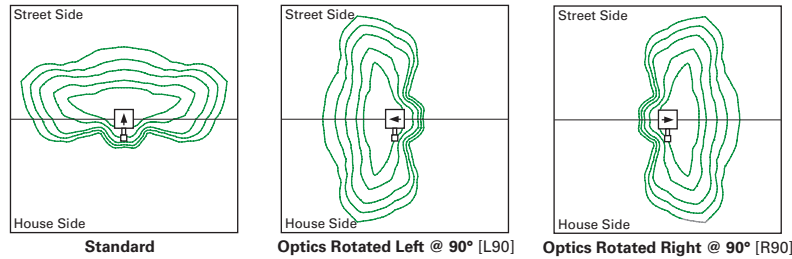
Ambient Temperature	Lumen Multiplier
10°C	1.02
15°C	1.01
25°C	1.00
40°C	0.99



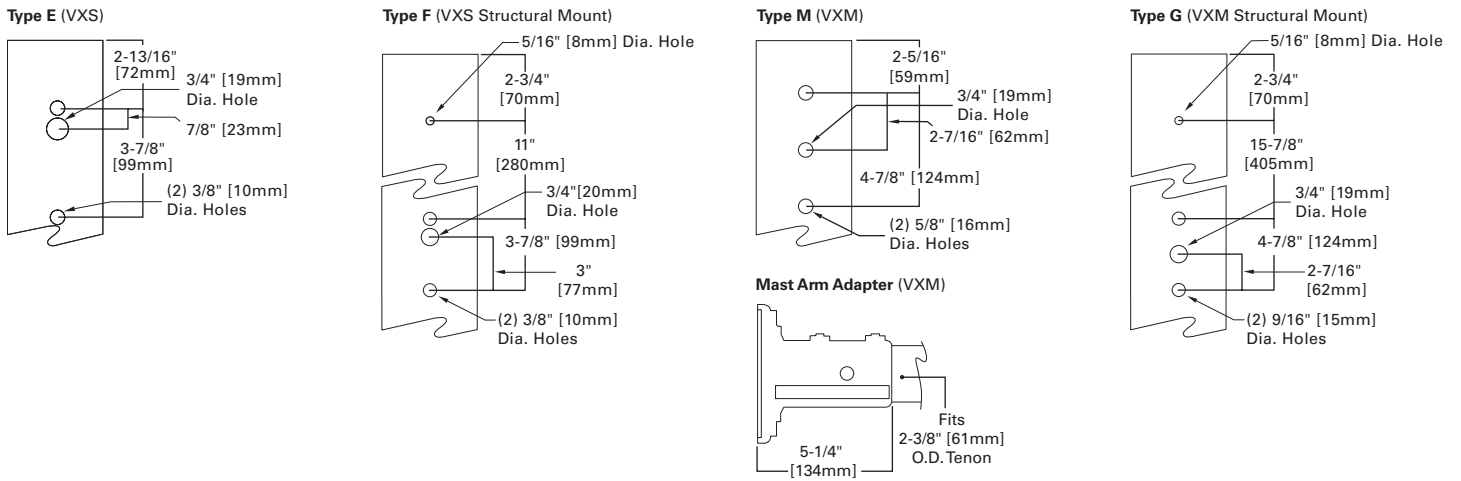
MOUNTING VARIATIONS AND EPAS



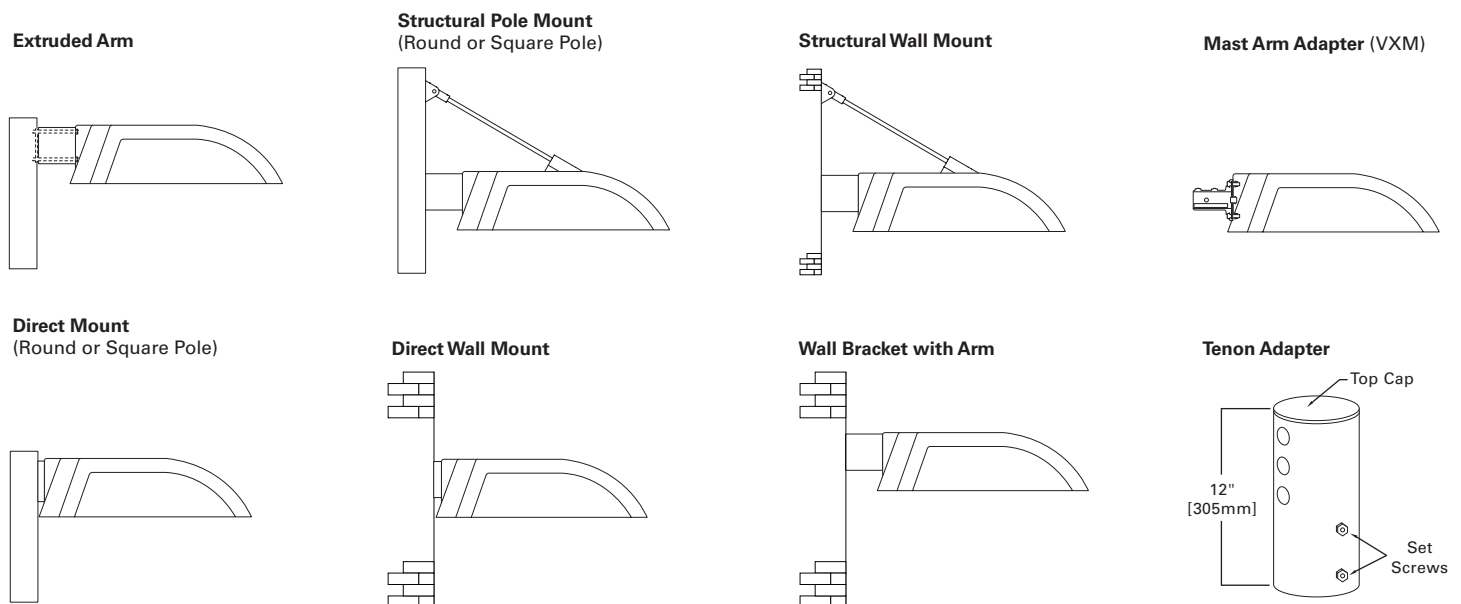
OPTIC ORIENTATION



POLE DRILLING PATTERNS AND MOUNTING OPTIONS



MOUNTING OPTIONS AND ACCESSORIES



CONTROL OPTIONS

0-10V (DIM)

The DIM option provides 0-10V dimming wire leads for use with a lighting control panel or other control method.

Photocontrol (PC, PER and PER7)

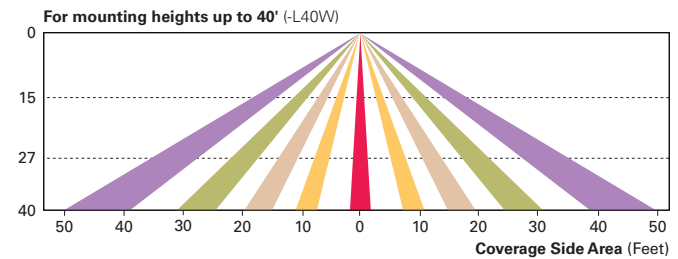
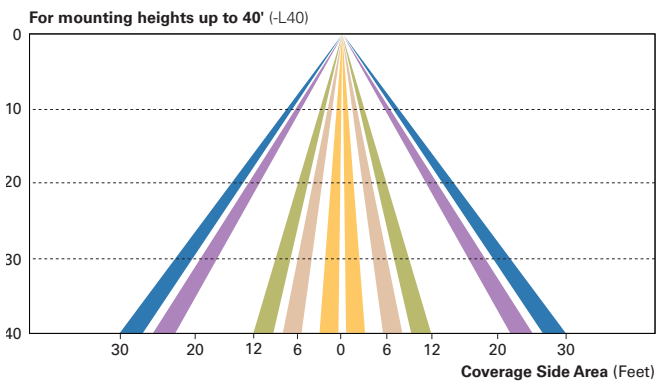
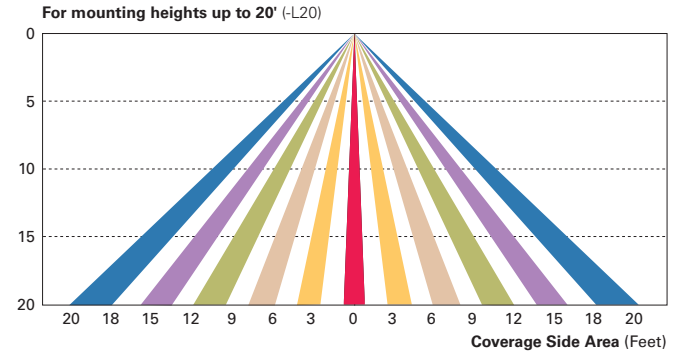
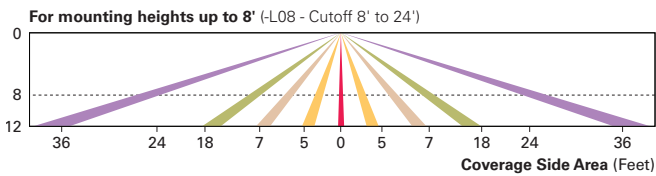
Optional button-type photocontrol (PC) and photocontrol receptacles (PER and PER7) provide a flexible solution to enable “dusk-to-dawn” lighting by sensing light levels. Advanced control systems compatible with NEMA 7-pin standards can be utilized with the PER7 receptacle.

Dimming Occupancy Sensor (MS/DIM-LXX, MS/X-LXX and MS-LXX)

These sensors are factory installed in the luminaire housing. When the MS/DIM-LXX sensor option is selected, the occupancy sensor is connected to a dimming driver and the entire luminaire dims when there is no activity detected. When activity is detected, the luminaire returns to full light output. The MS/DIM sensor is factory preset to dim down to approximately 50 percent power with a time delay of five minutes. The MS-LXX sensor is factory preset to turn the luminaire off after five minutes of no activity. The MS/X-LXX is also preset for five minutes and only controls the specified number of light engines to maintain steady output from the remaining light engines.

These occupancy sensors includes an integral photocell that can be activated with the FSIR-100 accessory for “dusk-to-dawn” control or daylight harvesting - the factory preset is OFF. The FSIR-100 is a wireless tool utilized for changing the dimming level, time delay, sensitivity and other parameters.

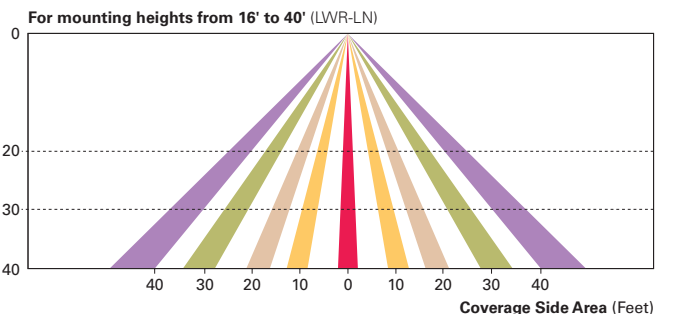
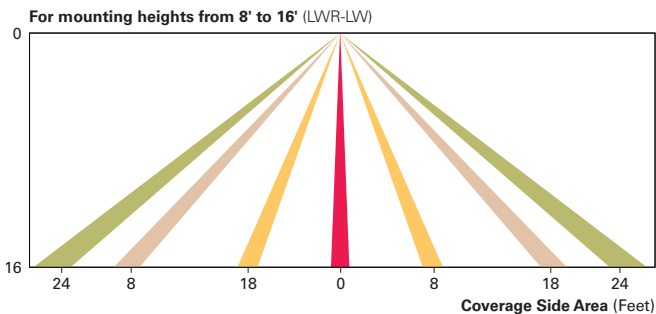
A variety of sensor lens are available to optimize the coverage pattern for mounting heights from 8’-40’.



LumaWatt Pro Wireless Control and Monitoring System (LWR-LW and LWR-LN)

The LumaWatt Pro system is a peer-to-peer wireless network of luminaire-integral sensors for any sized project. Each sensor is capable of motion and photo sensing, metering power consumption and wireless communication. The end-user can securely create and manage sensor profiles with browser-based management software. The software will automatically broadcast to the sensors via wireless gateways for zone-based and individual luminaire control. The LumaWatt Pro software provides smart building solutions by utilizing the sensor to provide easy-to-use dashboard and analytic capabilities such as improved energy savings, traffic flow analysis, building management software integration and more.

For additional details, refer to the LumaWatt Pro product guides.



ORDERING INFORMATION

Sample Number: VXS-E04-LED-E-T3-GM

Product Family ^{1,2,3}	Number of LightBARs ^{4,5}	Lamp Type	Voltage	Distribution	Color ⁶
VXS=Vision Site Small VXM=Vision Site Medium	E01=(1) 21 LED LightBAR E02=(2) 21 LED LightBARs E03=(3) 21 LED LightBARs E04=(4) 21 LED LightBARs E05=(5) 21 LED LightBARs ⁶ E06=(6) 21 LED LightBARs ⁶ F01=(1) 7 LED LightBAR F02=(2) 7 LED LightBARs F03=(3) 7 LED LightBARs F04=(4) 7 LED LightBARs F05=(5) 7 LED LightBARs ⁶ F06=(6) 7 LED LightBARs ⁶	LED=Solid State Light Emitting Diode	E1=Universal (120-277V) 347=347V 480=480V ⁷	T2=Type II T3=Type III T4=Type IV 5MQ=Type V Square Medium 5WQ=Type V Square Wide 5XQ=Type V Square Extra Wide RW=Rectangular Wide SL2=Type II with Spill Control SL3=Type III with Spill Control SL4=Type IV with Spill Control SLL=90° Spill Light Eliminator Left SLR=90° Spill Light Eliminator Right	AP=Grey BZ=Bronze BK=Black DP=Dark Platinum GM=Graphite Metallic WH=White
Structural Options ^{3,9}		Options (Add as Suffix)			
Pole Mount PRCPS=Strut Rod and Clevis Set for Square Pole (Painted to match fixture. Does not include arm) ¹⁰ PRCCS=Stainless Strut Rod and Clevis Set for Square Pole (Clevis painted to match fixture. Does not include arm) ¹⁰ PRCPR=Strut Rod and Clevis Set for Round Pole (Painted to match fixture. Does not include arm) ¹¹ PRCCR=Stainless Strut Rod and Clevis Set for Round Pole (Clevis painted to match fixture. Does not include arm) ¹¹ Wall Mount WRCP=Strut Rod and Clevis Set (Painted to match fixture. Does not include arm) ¹² WRCS=Stainless Steel Strut Rod and Clevis Set (Clevis painted to match fixture. Does not include arm) ¹²		PC=Button Type Photocontrol (Specify Voltage) R=NEMA Twistlock Photocontrol Receptacle PER7=NEMA 7-Pin Twistlock Photocontrol Receptacle 2L=Two Circuits ¹³ LCF=LightBAR Cover Plate Matches Housing Finish 7030=70 CRI / 3000K CCT ¹⁴ 7050=70 CRI / 5000K CCT ¹⁴ 8030=80 CRI / 3000K CCT ¹⁴ L90=Optics Rotated Left 90° R90=Optics Rotated Right 90° ICB=Integral Cold Weather Battery Pack (Specify 120 or 277V) ¹⁵ LWR-LW=LumaWatt Pro Wireless Sensor, Wide Lens for 8' - 16' Mounting Height ¹⁶ LWR-LN=LumaWatt Pro Wireless Sensor, Narrow Lens for 16' - 40' Mounting Height ¹⁶ HSS=Factory Installed House Side Shield ¹⁷ MS/DIM-L08=Motion Sensor for Dimming Operation, Maximum 8' Mounting Height ^{18, 19, 20, 21, 22} MS/DIM-L20=Motion Sensor for Dimming Operation, 9' - 20' Mounting Height ^{18, 19, 20, 21, 23} MS/DIM-L40=Motion Sensor for Dimming Operation, 21' - 40' Mounting Height ^{18, 19, 20, 21, 24} MS/DIM-L40W=Motion Sensor for Dimming Operation, 21' - 40' Mounting Height (Wide Range) ^{18, 19, 20, 21, 25}			
Accessories (Order Separately) ²⁶					
OA/RA1016=NEMA Photocontrol - Multi-Tap OA/RA1027=NEMA Photocontrol - 480V OA/RA1201=NEMA Photocontrol - 347V MA1253=10kV Circuit Module Replacement LS/HSS=Field Installed House Side Shield ²⁷ VXS Mounting Accessories (Order Separately) MA1071-XX=5" Arm for Square Pole MA1073-XX=Direct Mount for Square Pole MA1074-XX=5" Arm for Round Pole MA1076-XX=Direct Mount for Round Pole MA1077-XX=Wall Bracket with 5" Arm MA1200-XX=Direct Wall Mount Kit MA1101-XX=Single Tenon Adapter for 2-3/8" O.D. Tenon MA1102-XX=2@180° Tenon Adapter for 2-3/8" O.D. Tenon MA1103-XX=3@120° Tenon Adapter for 2-3/8" O.D. Tenon MA1104-XX=4@90° Tenon Adapter for 2-3/8" O.D. Tenon MA1105-XX=2@90° Tenon Adapter for 2-3/8" O.D. Tenon MA1106-XX=3@90° Tenon Adapter for 2-3/8" O.D. Tenon MA1107-XX=2@120° Tenon Adapter for 2-3/8" O.D. Tenon		MA1108-XX=Single Tenon Adapter for 3-1/2" O.D. Tenon MA1109-XX=2@180° Tenon Adapter for 3-1/2" O.D. Tenon MA1110-XX=3@120° Tenon Adapter for 3-1/2" O.D. Tenon MA1111-XX=4@90° Tenon Adapter for 3-1/2" O.D. Tenon MA1112-XX=2@90° Tenon Adapter for 3-1/2" O.D. Tenon MA1113-XX=3@90° Tenon Adapter for 3-1/2" O.D. Tenon MA1114-XX=2@120° Tenon Adapter for 3-1/2" O.D. Tenon VXM Mounting Accessories (Order Separately) MA1050-XX=6" Arm for Square Pole MA1051-XX=10" Arm for Square Pole ²⁸ MA1052-XX=6" Arm for Round Pole MA1053-XX=10" Arm for Round Pole ²⁸ MA1054-XX=Wall Bracket with 6" Arm ²⁹ MA1056-XX=Direct Mount for Square Pole MA1057-XX=Direct Mount for Round Pole MA1201-XX=Direct Wall Mount Kit ²⁹ MA1207-XX=Mast Arm Adapter MA1231-XX=Structural Mount Wall Mount Arm ³⁰		MA1017-XX=Single Tenon Adapter for 2-3/8" O.D. Tenon MA1018-XX=2@180° Tenon Adapter for 2-3/8" O.D. Tenon MA1019-XX=3@120° Tenon Adapter for 2-3/8" O.D. Tenon MA1045-XX=4@90° Tenon Adapter for 2-3/8" O.D. Tenon MA1048-XX=2@90° Tenon Adapter for 2-3/8" O.D. Tenon MA1115-XX=3@90° Tenon Adapter for 2-3/8" O.D. Tenon MA1116-XX=2@120° Tenon Adapter for 2-3/8" O.D. Tenon MA1010-XX=Single Tenon Adapter for 3-1/2" O.D. Tenon MA1011-XX=2@180° Tenon Adapter for 3-1/2" O.D. Tenon MA1012-XX=3@120° Tenon Adapter for 3-1/2" O.D. Tenon MA1013-XX=4@90° Tenon Adapter for 3-1/2" O.D. Tenon MA1014-XX=2@90° Tenon Adapter for 3-1/2" O.D. Tenon MA1015-XX=2@120° Tenon Adapter for 3-1/2" O.D. Tenon MA1016-XX=3@90° Tenon Adapter for 3-1/2" O.D. Tenon	

- NOTES:**
- Customer is responsible for engineering pole analysis to confirm pole and fixture compatibility for all applications. Refer to our pole white paper WP513001EN for additional support information.
 - DesignLights Consortium™ Qualified. Refer to www.designlights.org Qualified Products List under Family Models for details.
 - Arm not included. Order separately.
 - Standard 4000K CCT and greater than 70 CRI.
 - 21 LED LightBAR powered at 350mA, 7 LED LightBAR powered at 1A.
 - Avialable with VXM only.
 - Only for use with 480V Wye systems. Per NEC, not for use with ungrounded systems, impedance grounded systems or corner grounded systems (commonly known as Three Phase Three Wire Delta, Three Phase High Leg Delta and Three Phase Corner Grounded Delta systems).
 - Custom and RAL color matching avialable upon request. Consult your customer service representative for more information.
 - Add as suffix in the order shown.
 - Compatible with 5" MA1071 arm only (VXS). Compatible with 10" MA1051 arm only (VXM).
 - Compatible with 5" MA1074 arm only (VXS). Compatible with 10" MA1053 arm only (VXM).
 - Wall mount structural options do not include arm assembly (See accessories). Compatible with 5" MA1071 arm only (VXS). Compatible with MA2131 arm only (VXM).
 - Low-level output varies by bar count. Consult factory. Requires two or more light bars.
 - Extended lead times apply. See website for IES files.
 - Available with E01-E02 and F01-F02 configurations only (VXS). Available with E01-E04 and F01-F04 configurations only (VXM). Specify 120V or 277V. LED cold weather integral battery pack is rated for minimum operating temperature -4°F (-20°C). Operates one light bar for 90-minutes. Not available in all configurations, consult factory. Rated for use in 25°C ambient.
 - LumaWatt wireless sensors are factory installed only requiring network components LWP-EM-1, LWP-GW-1, and LWP-PoE8 in appropriate quantities. See www.eaton.com/lighting for LumaWatt application information.
 - Only for use with SL2, SL3 and SL4 distributions. Not available with L90 or R90 options.
 - Consult factory for more information.
 - Utilizes internal step-down transformer when 347V or 480V is selected.
 - The FSIR-100 accessory is required to adjust parameters including high and low modes, sensitivity, time delay, cutoff and more. Consult your lighting representative at Eaton for more information.
 - Not available with HA option.
 - Approximately 22' detection diameter at 8' mounting height.
 - Approximately 40' detection diameter at 20' mounting height.
 - Approximately 60' detection diameter at 40' mounting height.
 - Approximately 100' detection diameter at 40' mounting height.
 - Replace XX with color designation.
 - One required for each LightBAR. Not available with L90 or R90 options.
 - Use when mounting fixture head at 90° increments.
 - For use in downlighting applications only.
 - Includes arm only. Must specify WRCP or WRCS in fixture ordering logic. Downlighting applications only.