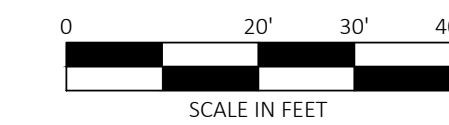
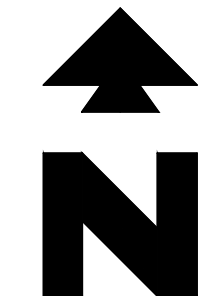
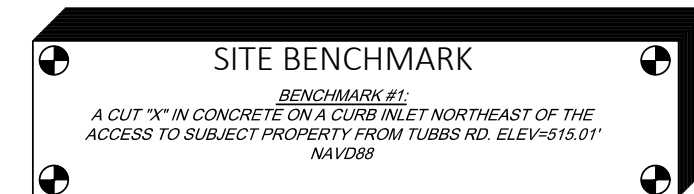


Vicinity Map

Not to Scale
Latitude: 32.883939°
Longitude: -96.462854°



NOTE:
SEE ARCHITECTURAL PLANS FOR EXACT LOCATIONS AND DIMENSIONS OF
PORCHES, RAMPS, VESTIBULE, SLOPED PAVING, TRUCK DOCKS, BUILDING
UTILITY ENTRANCE LOCATIONS AND PRECISE BUILDING DIMENSIONS.

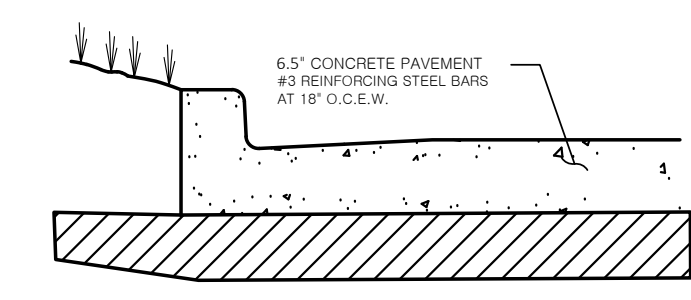
SITE INFORMATION TABLE	
ZONING	PD - "PLANNED DEVELOPMENT 9" FOR GENERAL RETAIL (GR) DISTRICT LAND USES
PROPOSED LAND USE	CONVENIENCE STORE WITH FUEL SALES AND CAR WASH
EXISTING LOT SIZE	39,355 SF/0.90 AC
PROPOSED LOT SIZE	43,397 SF/1.00 AC

LEGEND

EXISTING			
e	EAST OR ELECTRIC	OHT	OVERHEAD TELEPHONE
n	NORTH	OHTV	OVERHEAD TV
ss	SOUTH OR SEWER	X"SS	SANITARY SEWER
t	TELEPHONE	UGE	UNDERGROUND ELECTRIC
ue	UNDERGROUND	UGE&T	UNDERGROUND ELECTRIC AND TELEPHONE
w	WEST OR WATER	UGT	UNDERGROUND TELEPHONE
---	PROPERTY LINE	UGTV	UNDERGROUND TV
---	RIGHT OF WAY LINE	X"W	WATER
---	STORM DRAIN	-5-10-11 50.5	TREE INFO
X"G	GAS		.5 = DIAMETER OF TRUNK IN FEET
OHE	OVERHEAD ELECTRIC		10 = HEIGHT OF TREE IN FEET
OHE&T	OVERHEAD ELECTRIC AND TELEPHONE		11 = CANOPY DIAMETER IN FEET
			50.5 = ELEVATION AT BASE OF TREE

- SITE DETAILS**
- 01A TYPE A CONCRETE CURB AND GUTTER
 - 10A TRAFFIC FLOW ARROW
 - 11A DO NOT ENTER SIGN
 - 11J ONE WAY SIGN
- SITE NOTES**
- 02E TRASH DUMPSTER ENCLOSURE (PER ARCH. PLANS).
 - 08B OVERHEAD CANOPY - (TYP.-PER ARCH. PLANS).
 - 21G AIR VACUUM UNIT (SEE JGD SHEET FT-1 FOR CONDUIT SIZE)
 - 70A P.O.S SYSTEM FOR CAR WASH (PER ARCH. PLANS).
 - 70B TIMER FOR CARWASH (PER ARCH. PLANS).
 - 70C LIGHT POLE. (PER ARCH. PLANS).

- PROPOSED**
- PROPERTY LINE/RIGHT OF WAY LINE
 - CONCRETE CURB AND GUTTER. SEE DETAIL 01A/01B.
 - BUILDING CONTROL POINT



6.5" STANDARD-DUTY CONCRETE PAVING
N.T.S.

Edward Teal Survey
Abstract No. 207

Lot 2, Block B
Horizon Ridge Center
Parcel No. 83041
Murphy Road LTD
PD-9

OWNER:
KELLY CANNELL, VICE PRESIDENT
5900 S. LAKE FOREST, STE 295
MCKINNEY, TX 75070
(972) 562-5555

DEVELOPER:
SHANE PARTTRIDGE
SCHAFFER CONSTRUCTION
2601 NETWORK BLVD, STE. 413
FRISCO, TEXAS 75034
PH# 214-888-8923 (O)
PH# 972-951-7851 (M)
SPARTTRIDGE@SCHAFFERCONST.COM

PRELIMINARY
NOT FOR
CONSTRUCTION

F-7524

ZONING CASE NO.: Z2018-039

30945	10/29/18	JDC	DMT	CAC	CAG
CEI PROJECT NO.	INITIAL DATE	DPOR	PM	DES	DRW

CEI Engineering Associates, Inc.
ENGINEERS • PLANNERS • SURVEYORS
LANDSCAPE ARCHITECTS • ENVIRONMENTAL SCIENTISTS

3030 BJ Freeway, Suite 100 (972) 488-3737
Dallas, TX 75234 FAX (972) 488-6732

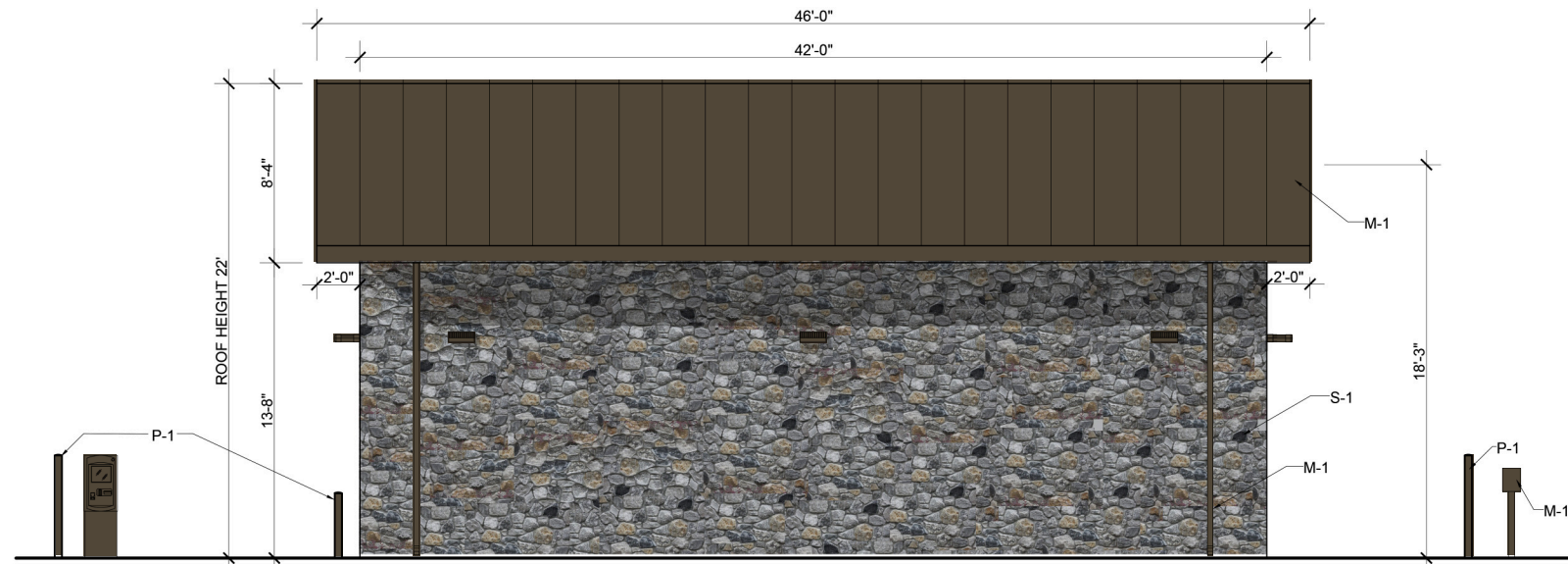
7-ELEVEN

3520 HORIZON ROAD
ROCKWALL, TEXAS

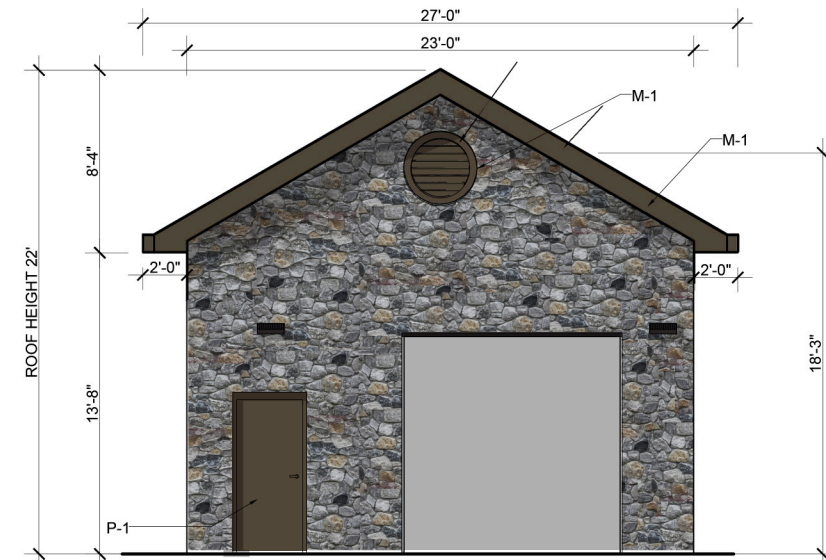
SITE PLAN

REV DATE 10/29/18
REV-D SHEET NO. C3 OF 7

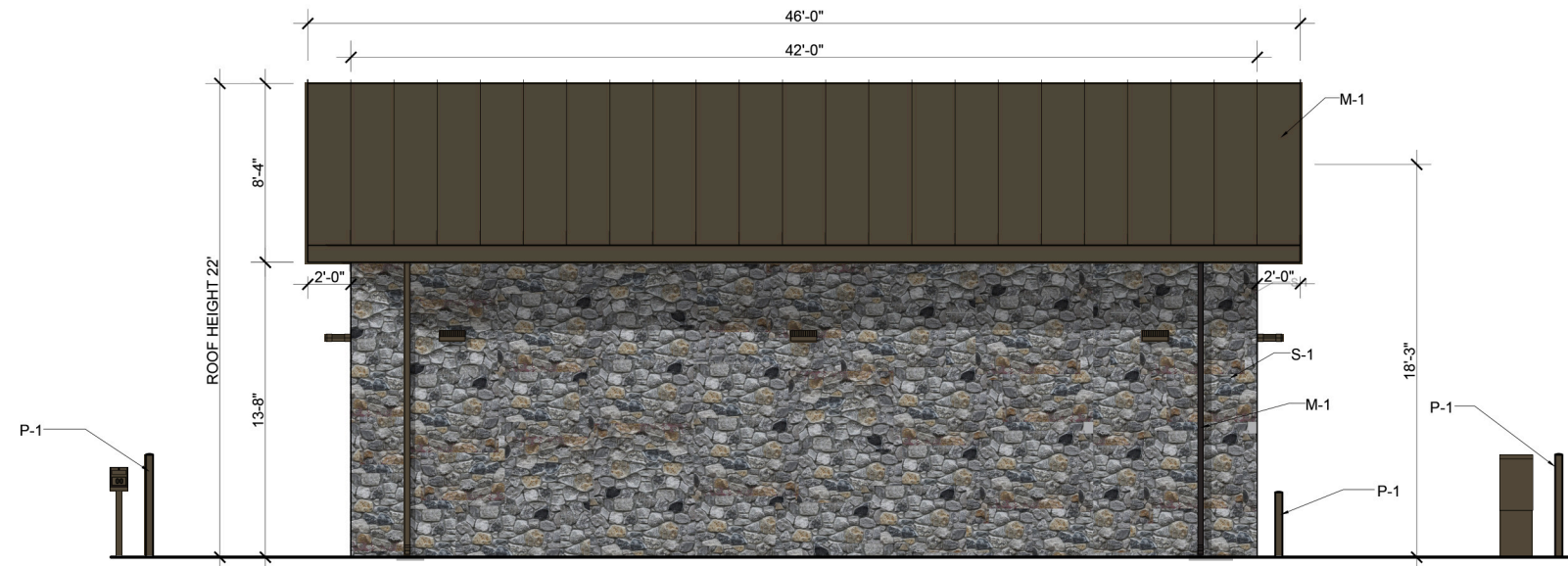
JOB # 30945 DRAWING: 30945 SP.dwg LAST SAVED BY: BWALDRUM LOCATION: P:\30000\30945\Drawings\Design\Rev-1\30945_SP.dwg



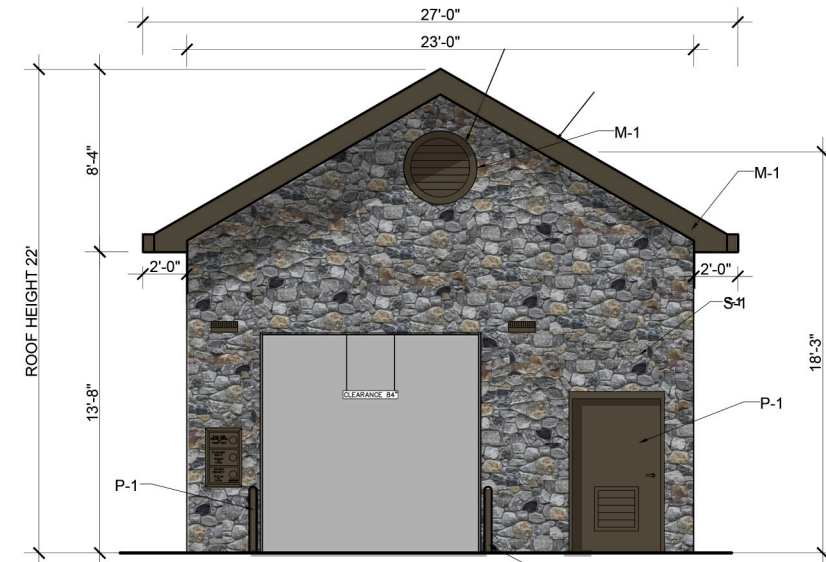
04 **SOUTHEAST ELEVATION**
1/4" = 1'-0"



03 **NORTHEAST ELEVATION FACING HORIZON RD.**
1/4" = 1'-0"



02 **NORTHWEST ELEVATION**
1/4" = 1'-0"

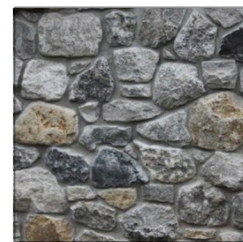


01 **SOUTHWEST ELEVATION**
1/4" = 1'-0"

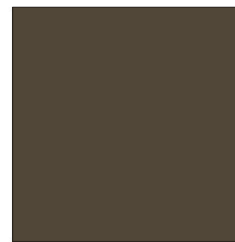
ELEVATION MATERIAL PERCENTAGES

	SOUTHEAST		NORTHWEST		NORTHEAST		SOUTHWEST	
MASONRY	553 SF	90 %	553 SF	90 %	268 SF	86 %	259 SF	85 %
NON-MASONRY	45 SF	10 %	45 SF	10 %	41 SF	14 %	45 SF	15 %
TOTAL	610 SF	100 %	610 SF	100 %	309 SF	100 %	304 SF	100 %

MATERIAL SCHEDULE



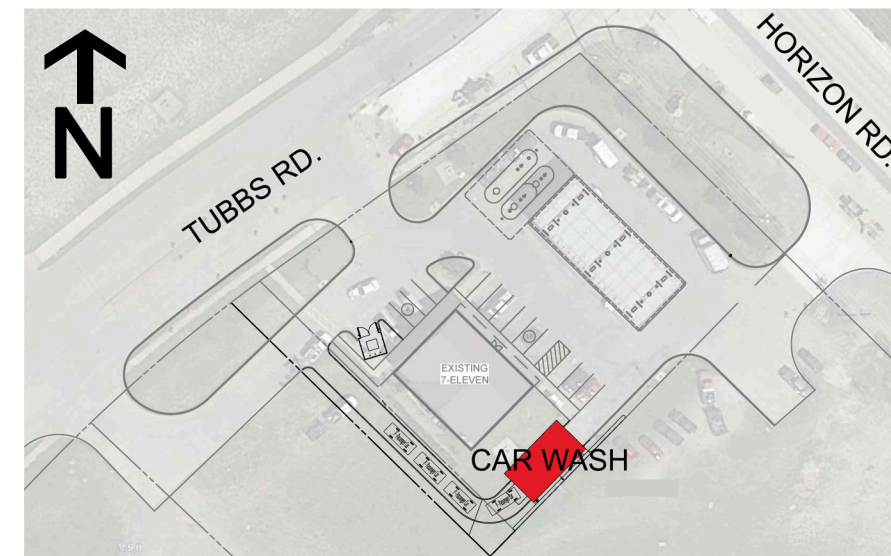
S-1
ALAMO STONE
COTTAGE BROOK
CULTURED
COBBELSTONE COLLECTION
(TO MATCH MAIN BUILDING STONE)



M-1
DARK BRONZE METAL



P-1
PAINTED TO MATCH M-1



Job#:	18-608
Scale:	NTS
Date:	09.28.18
Drawn By:	JJ
Checked By:	KS

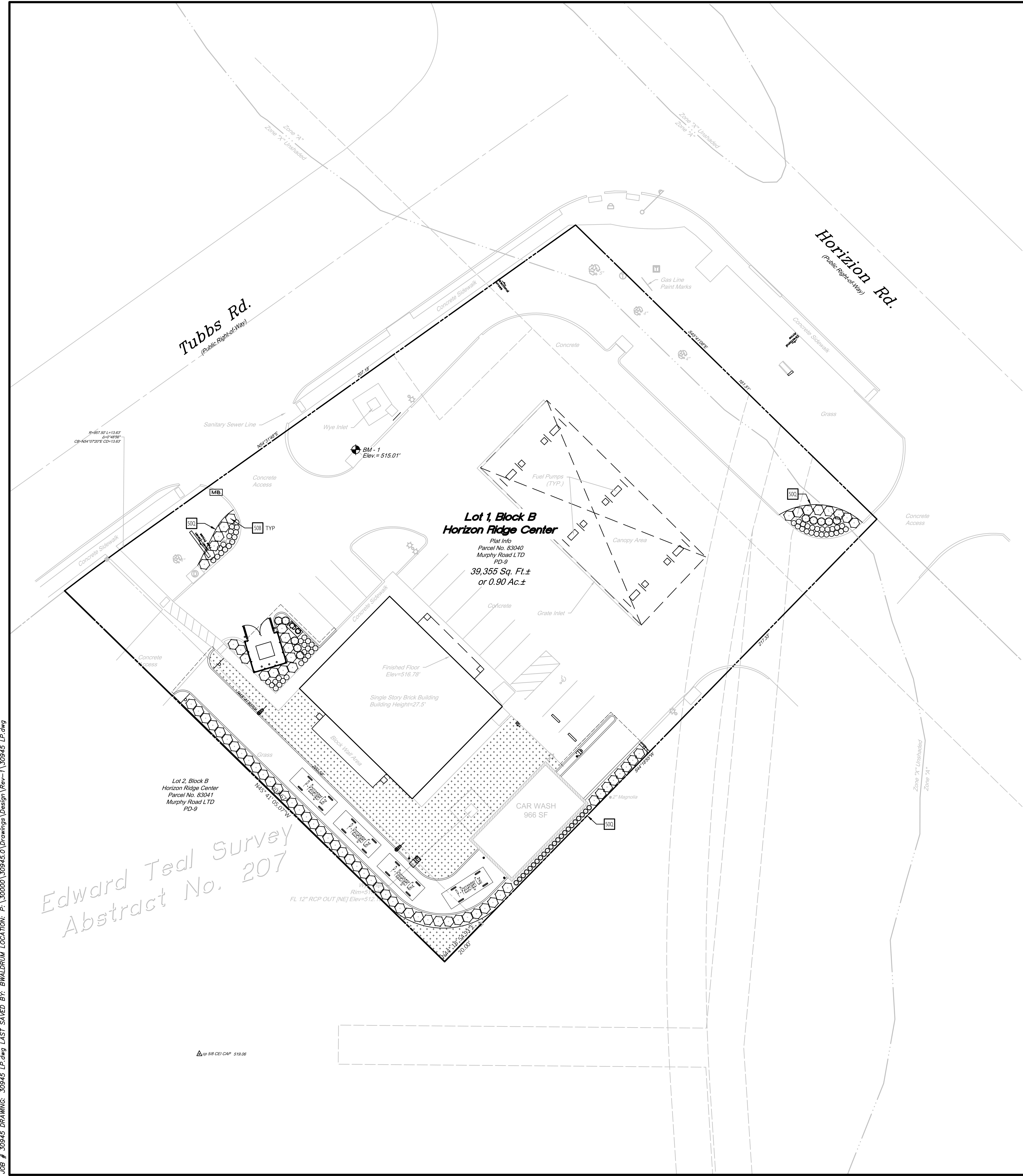
7-ELEVEN, INC.
3200 HACKBERRY ROAD, IRVING, TEXAS 75063

7-11 CAR WASH ADDITION #34353
3520 HORIZON ROAD
ROCKWALL, TEXAS 75032

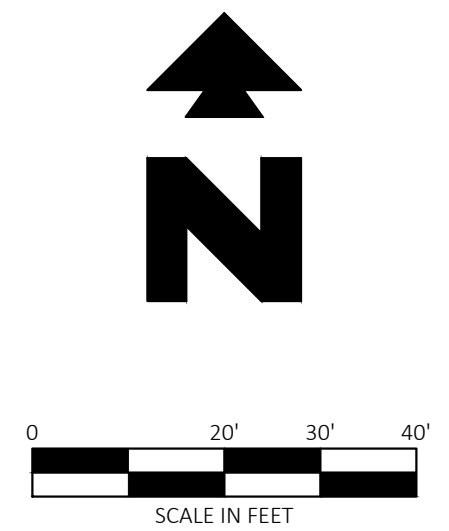
Proto 02-03-2017

THE DIMENSION GROUP
ARCHITECTURE-CIVIL-ENGINEERING-MEP-ENGINEERING
10702 SANDHILL ROAD, DALLAS, TEXAS 75238
TEL: 214-343-6000 WWW.DIMENSIONGROUP.COM

SHEET:
PP



SITE BENCHMARK
 BENCHMARK #1
 A CUT 3" IN CONCRETE ON A CURB INLET NORTHEAST OF THE
 ACCESS TO SUBJECT PROPERTY FROM TUBBS RD. ELEV=515.01'
 NAVD88



NOTE:
 SEE ARCHITECTURAL PLANS FOR EXACT LOCATIONS AND DIMENSIONS OF
 PORCHES, RAMPS, VESTIBULE, SLOPED PAVING, TRUCK DOCKS, BUILDING
 UTILITY ENTRANCE LOCATIONS AND PRECISE BUILDING DIMENSIONS.

SITE INFORMATION TABLE	
ZONING	PD - "PLANNED DEVELOPMENT 9" FOR GENERAL RETAIL (GR) DISTRICT LAND USES
PROPOSED LAND USE	CONVENIENCE STORE WITH FUEL SALES AND CAR WASH
EXISTING LOT SIZE	39,355 SF/0.90 AC
PROPOSED LOT SIZE	43,397 SF/1.00 AC

LEGEND

EXISTING			
e	EAST OR ELECTRIC	OHT	OVERHEAD TELEPHONE
n	NORTH	OHTV	OVERHEAD TV
oh	OVERHEAD	X"SS	SANITARY SEWER
s	SOUTH OR SEWER	UGE	UNDERGROUND ELECTRIC
t	TELEPHONE	UGE&T	UNDERGROUND ELECTRIC AND TELEPHONE
ue	UNDERGROUND	UGT	UNDERGROUND TELEPHONE
w	WEST OR WATER	UGTV	UNDERGROUND TV
---	PROPERTY LINE	X"W	WATER
---	RIGHT OF WAY LINE	-5-10-11 50.5	TREE INFO 5 = DIAMETER OF TRUNK IN FEET 10 = HEIGHT OF TREE IN FEET 11 = CANOPY DIAMETER IN FEET 50.5 = ELEVATION AT BASE OF TREE
---	STORM DRAIN		
X"G	GAS		
OHE	OVERHEAD ELECTRIC		
OHE&T	OVERHEAD ELECTRIC AND TELEPHONE		

PROPOSED	
---	BOUNDARY LINE
---	RIGHT OF WAY LINE
---	STORM DRAIN
[Pattern]	SOLID SOD BERMUDA GRASS
[Symbol]	TYPICAL PLANTING WITH QUANTITY AND KEY (SEE PLANT LIST)

SITE DETAILS (REFER TO SHEET L3)

50A	SHRUB PLANTING
50Q	STEEL EDGING

PLANT SCHEDULE				
SHRUBS	QTY	BOTANICAL NAME / COMMON NAME	SIZE	DETAIL
[Symbol]	22	Ilex crenata 'Sky Pencil' / Sky Pencil Japanese Holly	5 gal	50B
[Symbol]	75	Leucophyllum frutescens 'Compacta' / Compact Texas Ranger	5 gal	50B
[Symbol]	10	Loropetalum chinense 'Purple Pixie' / Purple Pixie Loropetalum	5 gal	50B
[Symbol]	57	Nassella tenuissima 'Pony Tails' / Mexican Feathergrass	3 gal	50B

GENERAL NOTES (SEE SHEET L3 FOR ADDITIONAL LANDSCAPE NOTES)

- CONTRACTOR TO ENSURE THAT AN AUTOMATED IRRIGATION SYSTEM THAT PROVIDES COMPLETE COVERAGE OF THE SITE AND MEETS ALL STATE AND LOCAL CODES IS INSTALLED PRIOR TO LANDSCAPE INSTALLATION. (SEE IRRIGATION PLAN SHEET IF PROVIDED). IF NO PLAN IS PROVIDED THE CONTRACTOR SHALL SUBMIT A PROPOSED DESIGN TO THE LANDSCAPE ARCHITECT/ENGINEER FOR APPROVAL PRIOR TO INSTALLATION. THE PROPOSED DESIGN MUST HAVE AN APPROVED BACKFLOW DEVICE AND RAIN SENSOR INSTALLED TO STOP IRRIGATION DURING RAIN EVENTS. CONTRACTOR SHALL ENSURE THAT THERE IS POSITIVE DRAINAGE AND NO PONDING OF WATER AT ROOT AREA.

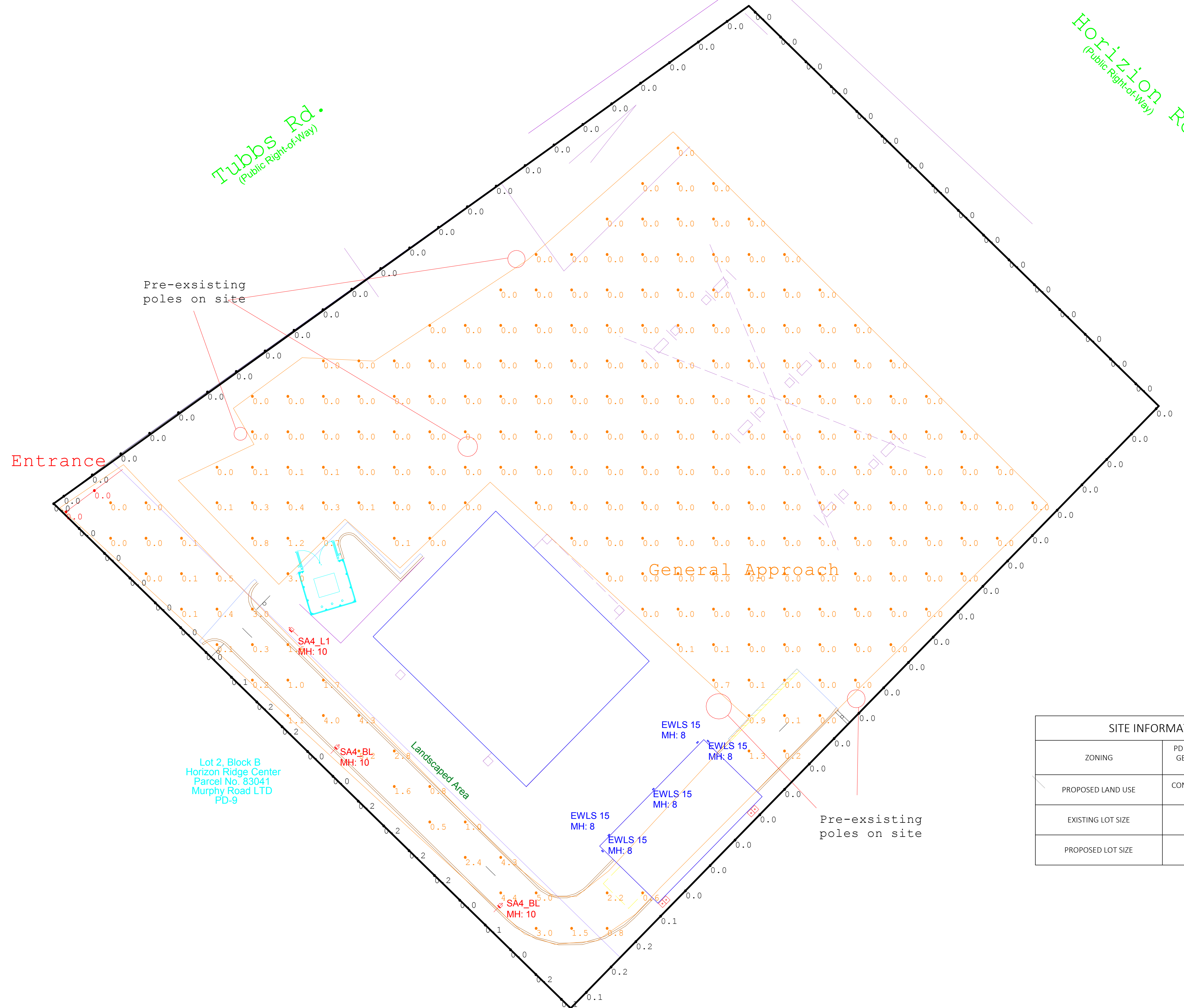
Edward Teal Survey
 Abstract No. 207

JOB # 30945 DRAWING: 30945 LP.dwg LAST SAVED BY: BHALDRUM LOCATION: F:\30000\30945\Drawings\Design\Rev-1\30945 LP.dwg

AS 58 CEI CAP 515.06

BR347

30945	10/29/18	JDC	DMT	CAC	CAC
CEI PROJECT NO.	INITIAL DATE	DPOR	PM	DES	DRW
CEI Engineering Associates, Inc.					
ENGINEERS • PLANNERS • SURVEYORS LANDSCAPE ARCHITECTS • ENVIRONMENTAL SCIENTISTS					
3030 BJ Freeway, Suite 100 Dallas, TX 75224			(972)488-3737 FAX (972)488-6732		
7-ELEVEN					
3520 HORIZON ROAD ROCKWALL, TEXAS					
LANDSCAPE PLAN				REV DATE 11/1/18 REV-0	SHEET NO. L2 OF 7



SITE INFORMATION TABLE	
ZONING	PD - "PLANNED DEVELOPMENT 9" FOR GENERAL RETAIL (GR) DISTRICT LAND USES
PROPOSED LAND USE	CONVENIENCE STORE WITH FUEL SALES AND CAR WASH
EXISTING LOT SIZE	39,355 SF/0.90 AC
PROPOSED LOT SIZE	43,397 SF/1.00 AC

Scale: 1 inch= 15.24 Ft.



THIS IS A D SIZE SHEET. THE NOTED SCALE IS NOT VALID IF PRINTED AS ANY OTHER SIZE.

Calculated light levels are based on specific information that has been supplied to GE. Any differences in luminaire installation, lighted area geometry and distribution in the lighted area may produce different results from the predicted values. Normal tolerances of voltage, lamp output, and ballast and luminaire manufacturers will affect results.
Ref: ES-134-01-06

Provided for:
John Downing
CURRENT, POWERED BY GE

Provided BY:
Application Solution Center
Current, Powered by GE
NELA Park, East Cleveland OH
P: 1-216-266-4660

Designer: Joshua Watkins
Date: 10/30/2018
GE Drawing #: A181735.7-Elleven#434353 Rockwall, TX, 02.AGI

7-ELEVEN STORE #34353
3520 Horizon Rd., Rockwall, TX
MOUNTING HEIGHT AS NOTED
MAINTAINED LIGHTING LEVELS INDICATED

Luminaire Schedule							
Symbol	Qty	Label	Arrangement	LLF	Description	Arr. Watts	Arr. Lum. Lumens
	5	EWLS 15	SINGLE	1.000	EWLS01_15AF750_____ -120-277V	12	1500
	2	SA4_BL	SINGLE	1.000	1-EASC0A4F550DC___D with ELSEASXRBLBLCK	44	4000
	1	SA4_L1	SINGLE	1.000	1-EASC0A4F550DC___D with ELSEASXRS1BLCK (Left)	44	2400

SITE INFORMATION TABLE	
Zoning	PD - "PLANNED DEVELOPMENT 9" for general retail (GR) district land uses
Proposed Land Use	Convenience store with fuel sales and car wash
Existing Lot Size	39,355 SF/0.90 AC
Proposed Lot Size	43,397 SF/1.00 AC

Calculation Summary							
Label	CalcType	Units	Avg	Max	Min	Avg/Min	Max/Min
Entrance	Illuminance	Fc	0.00	0.0	0.0	N.A.	N.A.
General Approach	Illuminance	Fc	0.28	5.2	0.0	N.A.	N.A.
Property Line	Illuminance	Fc	0.03	0.2	0.0	N.A.	N.A.

City Ordinance:
Property line cannot exceed 0.2FC.

Due to the ordinance,
This design does not meet 7-Eleven spec.

Standard 7-Eleven Lighting Specification	
Entrances	10FC AVG
Air Pump	10FC
Gasoline Canopy	30FC
Dumpster	10FC
Parking	10FC
General Approach	3FC
Sidewalk	NO SPEC
Property Line	NO SPEC

* Levels designed to be at initial output or 1.0LLF



current
powered by GE

Calculated light levels are based on specific information that has been supplied to GE. Any differences in luminaire installation, lighted area geometry and production in the lighted area may produce different results from the predicted values. Normal tolerances of voltage, lamp output, and ballast and luminaire production will affect results.
Ref: ES LM-01-06

Provided for:
John Downing
CURRENT, POWERED BY GE

Provided BY:
Application Solution Center
Current, Powered by GE
NELA Park, East Cleveland OH
P: 1-216-266-4660

Designer: Joshua Watkins
Date: 10/30/2018
GE Drawing #: A181733.7-Eleven#34353 Rockwall, TX, 02.AGJ

7-ELEVEN STORE #34353
3520 Horizon Rd, Rockwall, TX
MOUNTING HEIGHT AS NOTED
MAINTAINED LIGHTING LEVELS INDICATED

GE
Lighting

Evolve™ LED Area Light

Scalable Area Light (EASC)



imagination at work

Product Features

The next evolution of the GE Evolve™ LED Area Light continues to deliver outstanding features, while adding greater flexibility, style and scalability. This latest design offers higher lumen outputs and provides photometric combinations with high efficacy, providing the ability to meet even a wider range of area lighting needs. Additionally, the new EASC Evolve Luminaire comes with a specially designed auto dealership optic for exceptional illuminance on the dealership's front row. Optional programmable motion sensing for Title 24 compliance is available.

Applications

- Site, area, and general lighting applications utilizing advanced LED optical system providing high uniformity, excellent vertical light distribution, reduced offsite visibility, reduced on-site glare and effective security light levels.
- Ideal for small to large retailers, commercial to medical properties, and big box retailers.

Housing

- Die-cast aluminum housing.
- Slim architectural design incorporates an integral heat sink and light engine, ensuring maximum heat transfer, long LED life, and a reduced Effective Projected Area (EPA).
- Meets 3G vibration standards per ANSI C136.31-2010 for Slipfitter and Mounting Arm configurations. Meets 1.5G vibration standards for Knuckle Slipfitter Mounting.

LED & Optical Assembly

- Structured LED arrays for optimized area light photometric distribution.
- Evolve light engine with directional reflectors designed to optimize application efficiency and minimize glare.
- Utilizes high brightness LEDs, 70 CRI at 4000K and 5000K typical.

Lumen Maintenance

- Projected L90>100,000 hours per IES TM-21
- Projected Lxx per IES TM-21 at 25°C for reference:

Optical Code	Lxx (10k) @ Hours*		
	25,000 hr	50,000 hr	100,000 hr
All (up to 398 Watts)	L98	L95	L91

Note:
 - *Projected Lxx based on LM80 (10,000 hour testing). **Projected Lxx based on LM80 (6,000 hour testing).
 - DOE Lighting Facts Verification Testing Tolerances apply to initial luminous flux and lumen maintenance measurements.

Lumen Ambient Temperature Factors:

Ambient Temperature: (°C)	Initial Flux Factor
10	1.02
20	1.01
25	1.00
30	0.99
40	0.98



DLC Standard qualified models available. **Most SKUs of L-Series & V-Series will not meet DLC 4.1.** Please refer to <http://www.designlights.org/QPL> for complete information.

Ratings

- UL listed, suitable for wet locations.
- UL listed with option code "J" SKUs.
- IP65 rated optical enclosure per ANSI C136.25-2009.
- Temperature rated at -40° to 50°C (-40° to 35°C for fixtures over 390 watts).
- **Upward Light Output Ratio (ULOR) = 0.** This means full cutoff
- Title 24 compliant with "H" motion sensor option.
- Compliant with the material restriction requirements of RoHS.

Mounting

Option A

- 10-inch (254mm) mounting arm for square pole prewired with 24-inch (610mm) leads.

Option B

- 10-inch (254mm) mounting arm for round pole prewired with 24-inch (610mm) leads.

Option C

- Slipfitter mounting for 2 3/8-inch (60mm) O.D. pipe prewired with 24-inch (610mm) leads.

Option D

- 10-inch (254mm) mounting arm for round or square pole prewired with 24-inch (610mm) leads.

Option S

- Knuckle Slipfitter mounting for 2.3-3" O.D. pipe, pre-wired with 24-inch (610mm) leads.

Finish

- Corrosion resistant polyester powder painted, minimum 2.0 mil. thickness.
- Standard colors: Black & Dark Bronze.
- RAL & custom colors available.

Electrical

- 120-277 volt and 347-480 volt available.
- System power factor is >90% and THD <20%.*
- Class "A" sound rating.
- Photo electric sensors (PE) available for all voltages.
- ANSI C136.41 dimmable PE receptacle is available making the unit "adaptive controls ready."
- Surge Protection Options:
 For 120-277VAC and 347-480VAC per IEEE/ANSI C136.2-2015.
 - 6kV/3kA "Basic" surge protection, standard.
 - 10kV/5kA "Enhanced" surge protection available with R option.

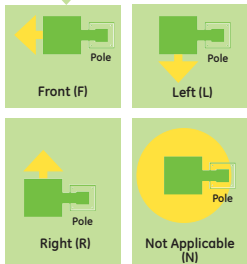
* System power factor and THD is tested and specified at 120V input and maximum load conditions.

Ordering Number Logic

Evolve™ LED Scalable Area Light (EASC)



EAS C

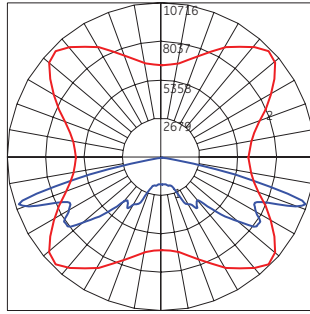
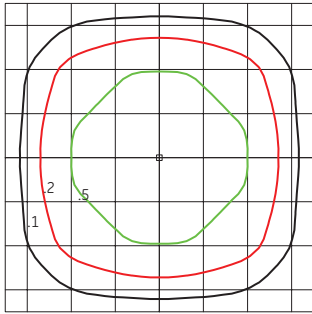
PROD. ID	PHOTOMETRIC	VOLTAGE	OPTICAL CODE	DISTRIBUTION ORIENTATION	DRIVE CURRENT	LED COLOR TEMP	PE FUNCTION	MOUNTING ARM	COLOR	OPTIONS
E = Evolve A = Area S = Scalable	C = Photometric Series	0 = 120 - 277 1 = 120* 2 = 208* 3 = 240* 4 = 277* 5 = 480* D = 347* H = 347-480 *Specify single voltage if fuse option is selected.	F = Front L = Left R = Right N = Not Applicable Light pattern thrown in direction specified in relation to Pole and Fixture. 	5 = 525mA 7 = 700mA* * Only select for product 395W. 40 = 4000K 50 = 5000K	1 = None A = ANSI C136.41 7-pin dimming PE Receptacle †# D = ANSI C136.41 7-pin dimming PE Receptacle with Shorting Cap †#	A = 10" Arm for Square Pole supplied with leads B = 10" Arm for Round Pole supplied with leads C = EXT Slip-fitter 2" Pipe (2.378 in. OD) supplied with leads D = 10" Arm for round or square poles, supplied with leads and additional hardware S = Knuckle Slipfitter for 2.3 in. - 3.0 in. OD Tenon, supplied with leads. 0-45° vertical aiming angles achievable.	BLCK = Black DKBZ = Dark Bronze GRAY = Gray WHITE = White Contact manufacturer for other colors.	C = IEC D = Dimming (0-10 Volt Input) † F = Fusing H = Motion Sensor**# J = cUL/Canada R = 10kV Extra Surge Protection XXX = Special Options † Dimming leads will be provided through the back of the arm, unless specified with A or D PE Function. ** When ordering Motion Sensing Option H - "A" or "B" Mounting Arm must be selected. Fixture power increase of 1W expected with sensor use. # Dimming is standard with H option code. Do not also select D option. Not compatible with PE receptacle options A, or D.		

OPTICAL CODE	TYPE	TYPICAL INITIAL LUMENS	TYPICAL SYSTEM WATTAGE	DISTRIBUTION ORIENTATION AVAILABLE	BUG RATING* 4000K & 5000K			IES FILE NUMBER		
					B	U	G	4000K	5000K	
TYPE V										
D5	Symmetric Medium	8300	82	N	3	0	2	EASC_D5N540	.IES	EASC_D5N550 .IES
E5	Symmetric Medium	12700	119	N	4	0	2	EASC_E5N540	.IES	EASC_E5N550 .IES
F5	Symmetric Medium	15000	137	N	4	0	2	EASC_F5N540	.IES	EASC_F5N550 .IES
G5	Symmetric Medium	17100	156	N	4	0	2	EASC_G5N540	.IES	EASC_G5N550 .IES
H5	Symmetric Medium	21200	199	N	4	0	2	EASC_H5N540	.IES	EASC_H5N550 .IES
J5	Symmetric Medium	25200	235	N	5	0	3	EASC_J5N540	.IES	EASC_J5N550 .IES
K5	Symmetric Medium	30000	283	N	5	0	3	EASC_K5N540	.IES	EASC_K5N550 .IES
L5	Symmetric Medium	38000	395	N	5	0	4	EASC_L5N740	.IES	EASC_L5N750 .IES
N5	Symmetric Short	9200	82	N	3	0	1	EASC_N5N540	.IES	EASC_N5N550 .IES
P5	Symmetric Short	13800	119	N	3	0	2	EASC_P5N540	.IES	EASC_P5N550 .IES
Q5	Symmetric Short	16400	137	N	4	0	2	EASC_Q5N540	.IES	EASC_Q5N550 .IES
R5	Symmetric Short	18700	156	N	4	0	2	EASC_R5N540	.IES	EASC_R5N550 .IES
S5	Symmetric Short	23100	199	N	4	0	2	EASC_S5N540	.IES	EASC_S5N550 .IES
T5	Symmetric Short	27400	235	N	4	0	2	EASC_T5N540	.IES	EASC_T5N550 .IES
U5	Symmetric Short	33000	283	N	5	0	2	EASC_U5N540	.IES	EASC_U5N550 .IES
V5	Symmetric Short	41500	395	N	5	0	3	EASC_V5N740	.IES	EASC_V5N750 .IES
TYPE IV										
A4	Asymmetric Forward	4200	44	F, L, R	1	0	1	EASC_A4F540	.IES	EASC_A4F550 .IES
B4	Asymmetric Forward	6500	62	F, L, R	1	0	2	EASC_B4F540	.IES	EASC_B4F550 .IES
C4	Asymmetric Forward	7600	72	F, L, R	1	0	2	EASC_C4F540	.IES	EASC_C4F550 .IES
D4	Asymmetric Forward	8700	82	F, L, R	1	0	2	EASC_D4F540	.IES	EASC_D4F550 .IES
E4	Asymmetric Forward	12900	119	F, L, R	2	0	3	EASC_E4F540	.IES	EASC_E4F550 .IES
F4	Asymmetric Forward	15400	144	F, L, R	2	0	3	EASC_F4F540	.IES	EASC_F4F550 .IES
G4	Asymmetric Forward	17100	156	F, L, R	2	0	3	EASC_G4F540	.IES	EASC_G4F550 .IES
H4	Asymmetric Forward	21200	199	F, L, R	3	0	4	EASC_H4F540	.IES	EASC_H4F550 .IES
J4	Asymmetric Forward	25200	235	F, L, R	3	0	4	EASC_J4F540	.IES	EASC_J4F550 .IES
K4	Asymmetric Forward	30000	283	F, L, R	3	0	5	EASC_K4F540	.IES	EASC_K4F550 .IES
L4	Asymmetric Forward	38300	395	F, L, R	3	0	5	EASC_L4F740	.IES	EASC_L4F750 .IES
TYPE III										
A3	Asymmetric Wide	4700	44	F, L, R	1	0	1	EASC_A3F540	.IES	EASC_A3F550 .IES
B3	Asymmetric Wide	7100	62	F, L, R	1	0	1	EASC_B3F540	.IES	EASC_B3F550 .IES
C3	Asymmetric Wide	8300	72	F, L, R	1	0	2	EASC_C3F540	.IES	EASC_C3F550 .IES
D3	Asymmetric Wide	9500	82	F, L, R	2	0	2	EASC_D3F540	.IES	EASC_D3F550 .IES
E3	Asymmetric Wide	13900	119	F, L, R	2	0	2	EASC_E3F540	.IES	EASC_E3F550 .IES
F3	Asymmetric Wide	16800	144	F, L, R	2	0	2	EASC_F3F540	.IES	EASC_F3F550 .IES
G3	Asymmetric Wide	18700	156	F, L, R	2	0	2	EASC_G3F540	.IES	EASC_G3F550 .IES
H3	Asymmetric Wide	23100	199	F, L, R	3	0	3	EASC_H3F540	.IES	EASC_H3F550 .IES
J3	Asymmetric Wide	27400	235	F, L, R	3	0	3	EASC_J3F540	.IES	EASC_J3F550 .IES
K3	Asymmetric Wide	33000	283	F, L, R	3	0	4	EASC_K3F540	.IES	EASC_K3F550 .IES
L3	Asymmetric Wide	41500	395	F, L, R	3	0	4	EASC_L3F740	.IES	EASC_L3F750 .IES
TYPE II										
A2	Asymmetric Narrow	4600	44	F, L, R	1	0	1	EASC_A2F540	.IES	EASC_A2F550 .IES
B2	Asymmetric Narrow	6800	62	F, L, R	1	0	1	EASC_B2F540	.IES	EASC_B2F550 .IES
C2	Asymmetric Narrow	8000	72	F, L, R	2	0	2	EASC_C2F540	.IES	EASC_C2F550 .IES
D2	Asymmetric Narrow	9100	82	F, L, R	2	0	2	EASC_D2F540	.IES	EASC_D2F550 .IES
E2	Asymmetric Narrow	13400	119	F, L, R	2	0	2	EASC_E2F540	.IES	EASC_E2F550 .IES
F2	Asymmetric Narrow	16200	144	F, L, R	3	0	3	EASC_F2F540	.IES	EASC_F2F550 .IES
G2	Asymmetric Narrow	18000	156	F, L, R	3	0	3	EASC_G2F540	.IES	EASC_G2F550 .IES
H2	Asymmetric Narrow	22300	199	F, L, R	3	0	3	EASC_H2F540	.IES	EASC_H2F550 .IES
J2	Asymmetric Narrow	26500	235	F, L, R	3	0	3	EASC_J2F540	.IES	EASC_J2F550 .IES
K2	Asymmetric Narrow	31900	283	F, L, R	3	0	4	EASC_K2F540	.IES	EASC_K2F550 .IES
L2	Asymmetric Narrow	40000	395	F, L, R	4	0	4	EASC_L2F740	.IES	EASC_L2F750 .IES
KA	Asymmetric 100° Wide Auto	35400	283	F, L, R	4	0	3	EASC_KAF540	.IES	EASC_KAF550 .IES
LA	Asymmetric 100° Wide Auto	46900	398	F, L, R	5	0	4	EASC_LAF740	.IES	EASC_LAF750 .IES

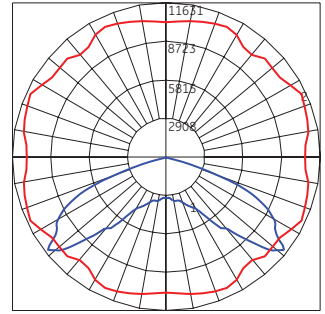
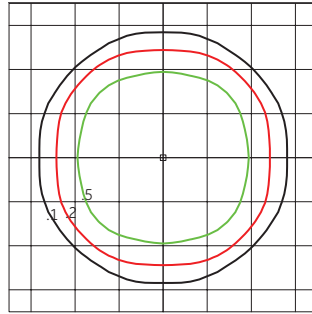
*Rating values for B and G are based on rated lumens and may vary due to flux tolerances.

Photometrics

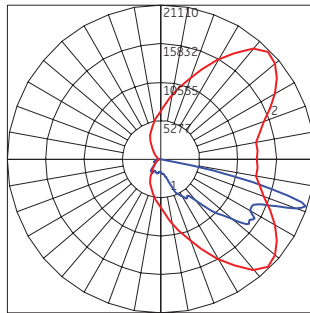
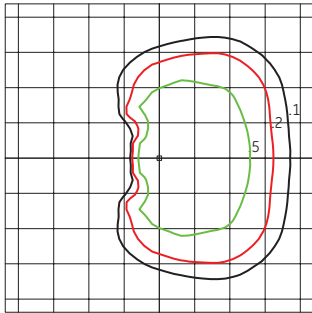
EASC Type V - Symmetric Medium (K5)
30,000 Lumens, 5000K (EASC_K5N550__ies)



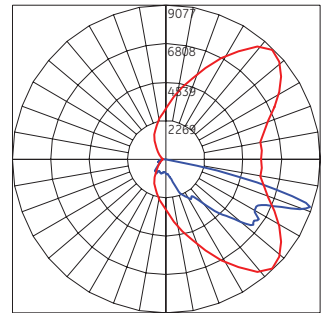
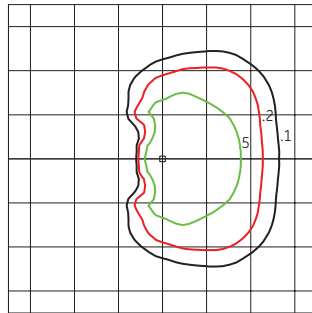
EASC Type V - Symmetric Short (U5)
33,000 Lumens, 5000K (EASC_U5N550__ies)



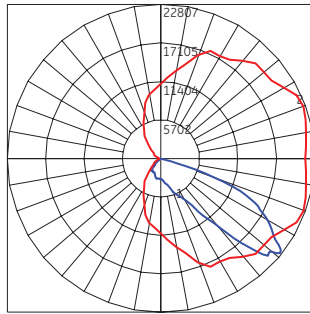
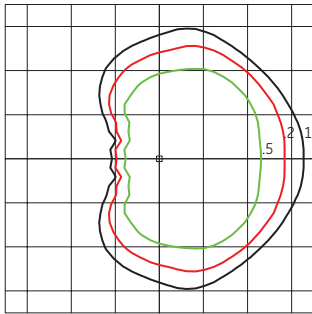
EASC Type IV - Asymmetric Forward (K4)
30,000 Lumens, 5000K (EASC_K4F550__ies)



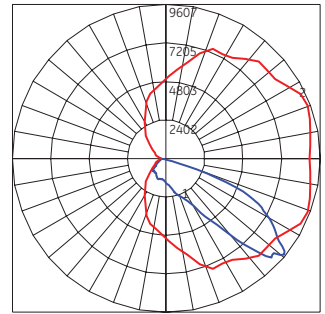
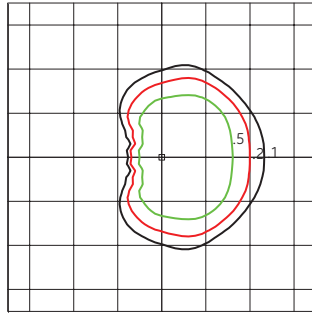
EASC Type IV - Asymmetric Forward (E4)
12,900 Lumens, 5000K (EASC_E4F550__ies)



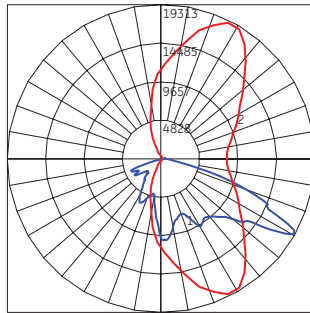
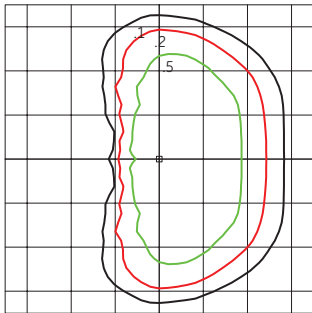
EASC Type III - Asymmetric Wide (K3)
33,000 Lumens, 5000K (EASC_K3F550__ies)



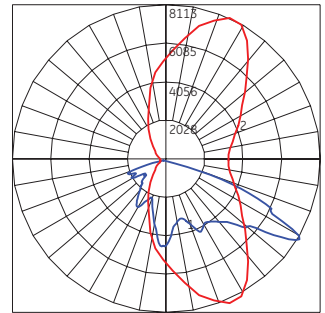
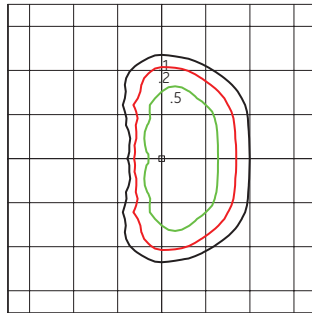
EASC Type III - Asymmetric Wide (E3)
13,900 Lumens, 5000K (EASC_E3F550__ies)



EASC Type II - Asymmetric Narrow (K2)
31,900 Lumens, 5000K (EASC_K2F550__ies)

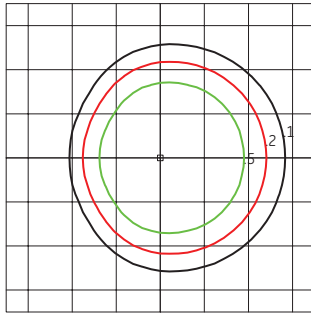


EASC Type II - Asymmetric Narrow (E2)
13,400 Lumens, 5000K (EASC_E2F550__ies)

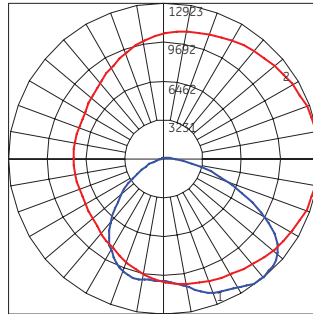


Photometrics

EASC Type II - Asymmetric Auto (KA)
35,400 Lumens, 5000K (EASC_KAF550__.ies)

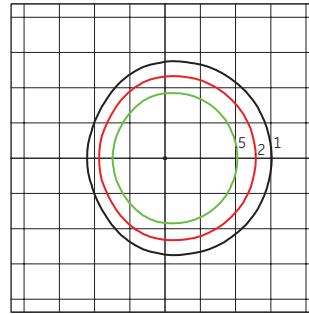


Grid Distance in Units of Mounting Height at 40' Initial Footcandle Values at Grade

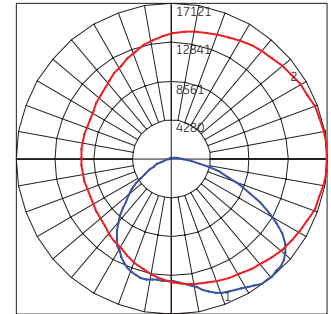


— Vertical plane through horizontal angle of maximum candlepower at 0°
— Vertical plane through horizontal angle of 37°

EASC Type II - Asymmetric Auto (LA)
46,900 Lumens, 5000K (EASC_LAF750__.ies)



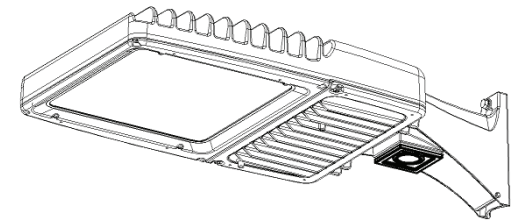
Grid Distance in Units of Mounting Height at 40' Initial Footcandle Values at Grade



— Vertical plane through horizontal angle of maximum candlepower at 0°
— Vertical plane through horizontal angle of 37°

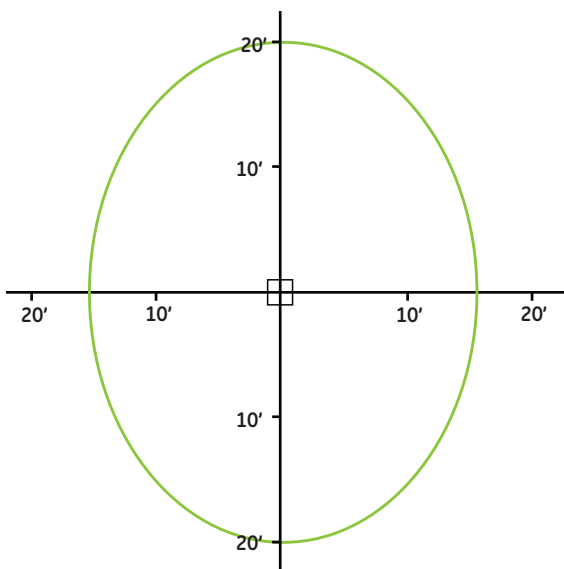
H-Motion Sensing Option:

- Intended for high mounting applications, between 15-30ft (4.57-9.14m). For mounting heights exceeding 30ft, pole mounted sensors are recommended.
- Provides a coverage area radius for walking motion of 15-20ft (4.57-6.10m).
- Provides 270° of coverage (~90° is blocked by the pole).
- Comes standard with 50% dimmed light output with no occupancy, and full power at occupancy.
- Comes standard with photocell function. Note: It is not necessary to also purchase PE receptacle or control.
- Comes standard with a 5 minute occupancy time delay and a 5 minute ramp-down to the 50% dimmed level.
- Must order with decorative mounting arm options "A" or "B".
- Fixture power increase of 1W expected with sensor use.



Note: Standard options may be reprogrammed in the field. Reprogramming instructions included in product shipment.

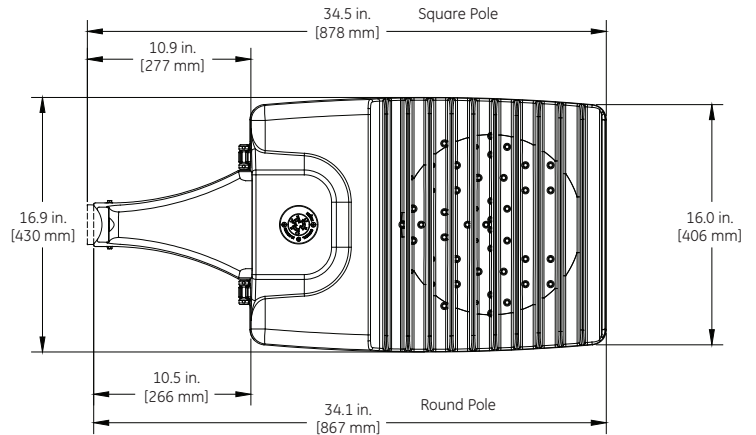
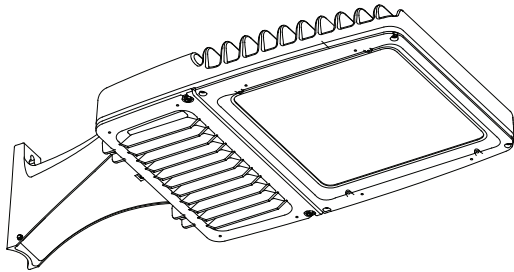
Sensor Pattern:



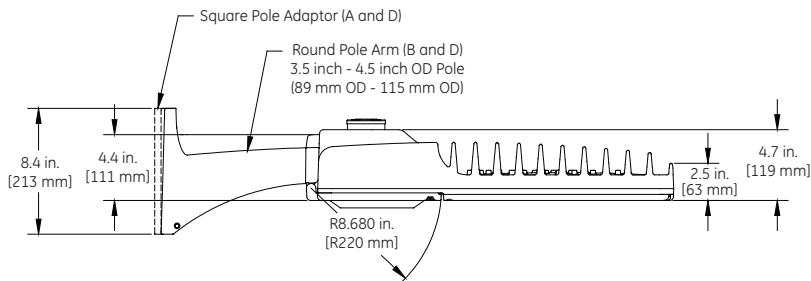
Sensing Pattern Area Fixture
Up to 30 ft.

Product Dimensions

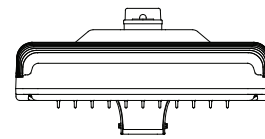
(Option A) 10" Arm for Square Pole Mount
 (Option B) 10" Arm for Round Pole Mount
 (Option D) 10" Arm for Square Pole Mount or Round Pole Mount
 Option D includes all mounting hardware in Option A and Option B



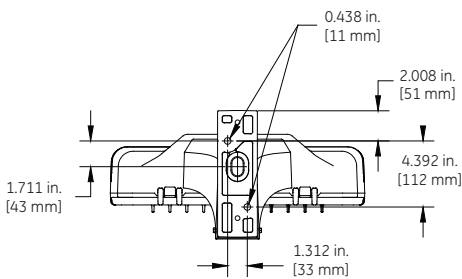
TOP VIEW



SIDE VIEW

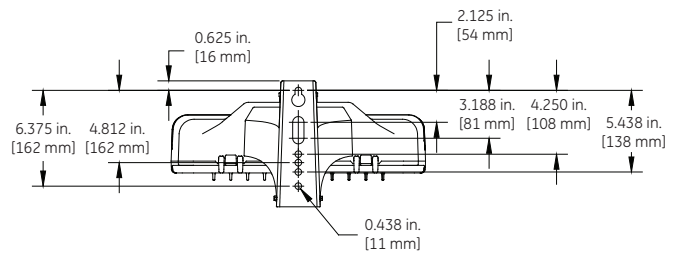


FRONT VIEW



BACK VIEW

Option A and D Square Pole
 3.5 inch - 4.5 inch Pole
 (89 mm - 115 mm)



BACK VIEW

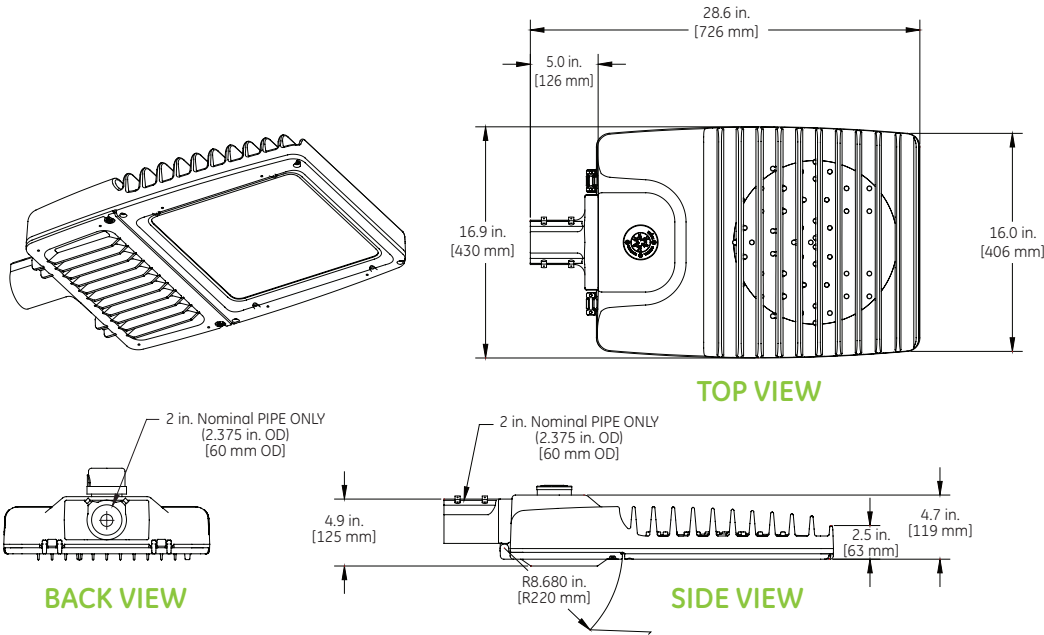
Option B and D Round Pole
 3.5 inch - 4.5 inch OD Pole
 (89 mm OD - 115 mm OD)

DATA

- Approximate net weight: 43-47 lbs (19.50 - 21.32 kgs)
 Contact manufacturer for specific configuration weight.
- Effective Projected Area (EPA) with 10" Mounting Arm: 0.97 sq ft max (0.09 sq m)

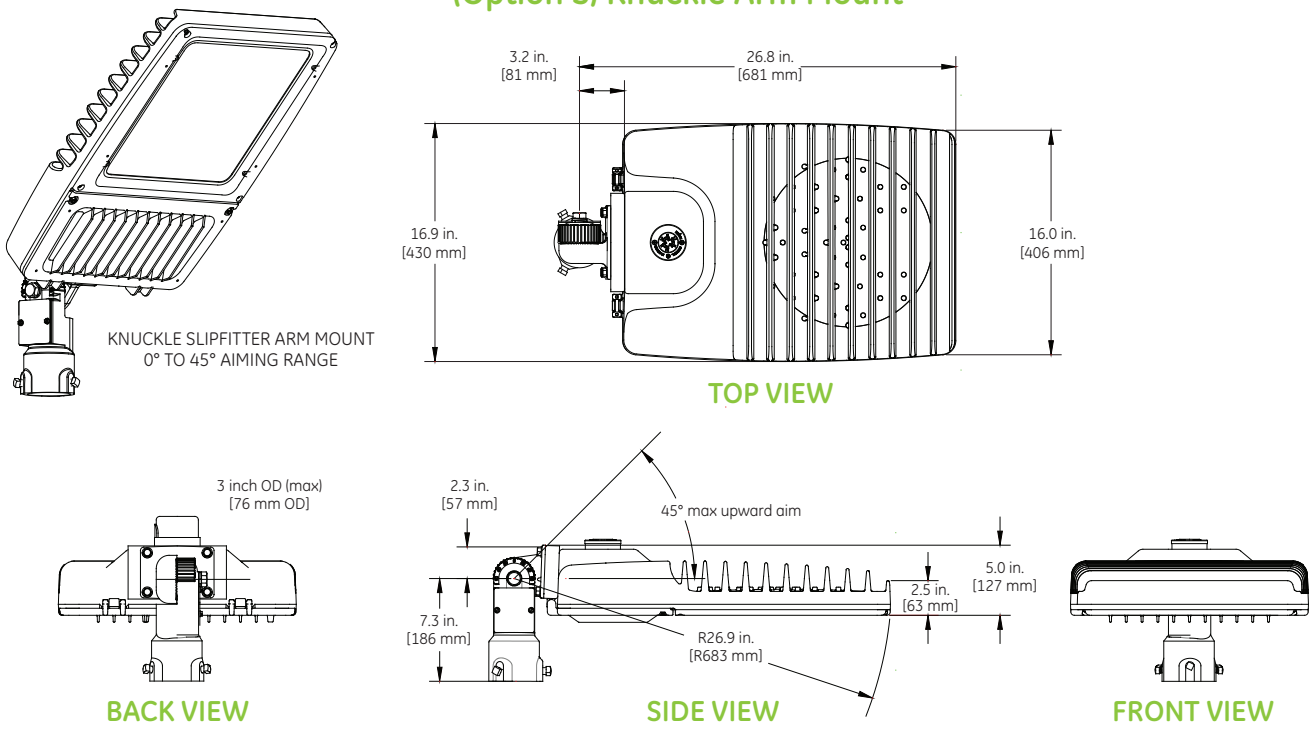
Product Dimensions

(Option C) Slipfitter Arm Mount



- DATA**
- Approximate net weight: 41-45 lbs (18.60 - 20.41 kgs)
Contact manufacturer for specific configuration weight.
 - Effective Projected Area (EPA) with Slipfitter: 0.47 sq ft max (0.04 sq m)

(Option S) Knuckle Arm Mount



- DATA**
- Approximate net weight: 41-45 lbs (18.60 - 20.41 kgs)
Contact manufacturer for specific configuration weight.
 - Effective Projected Area (EPA) with fixture mounted at 45° upward: 1.97 sq ft max

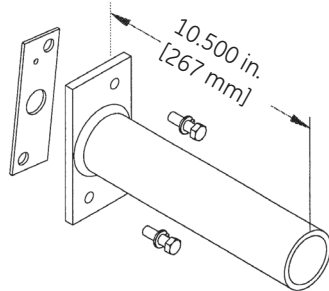
Mounting Information

Mounting Arms for Slipfitter

Order separately with Mounting Option C (External Slipfitter)

SQUARE POLE MOUNTING ARM

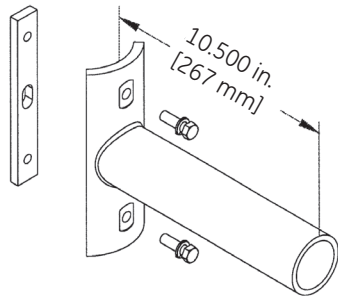
3.5 TO 4.5-inch (89 to 114mm) SQUARE
(WILL ALLOW 4 FIXTURES PER POLE @ 90 DEGREES.)



ORDER SEPARATELY FROM FIXTURE AS CATALOG NUMBER
SPA-EAMT10BLCK "Black"
SPA-EAMT10DKBZ "Dark Bronze"

ROUND POLE MOUNTING ARM

3.5 TO 4.5-inch (89 to 114mm) OD
(WILL ALLOW 4 FIXTURES PER POLE @ 90 DEGREES.)



ORDER SEPARATELY FROM FIXTURE AS CATALOG NUMBER
RPA-EAMT10BLCK "Black"
RPA-EAMT10DKBZ "Dark Bronze"

Wall Mounting Bracket Adapter Plate

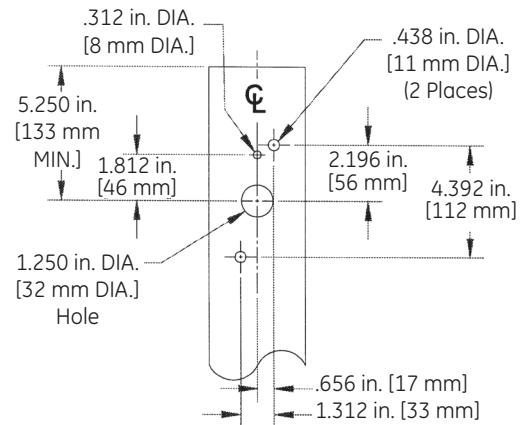
ORDER SEPARATELY FROM FIXTURE AS CATALOG NUMBER
WMB-EAMT06

***NOTE: For Wall Mounting, order luminaire with mounting arm: C = EXT Slip-fitter 2" Pipe (2.378 in. OD) supplied with leads.**

Other mounting patterns are available for retrofit installations.
Contact manufacturing for other available mounting patterns.

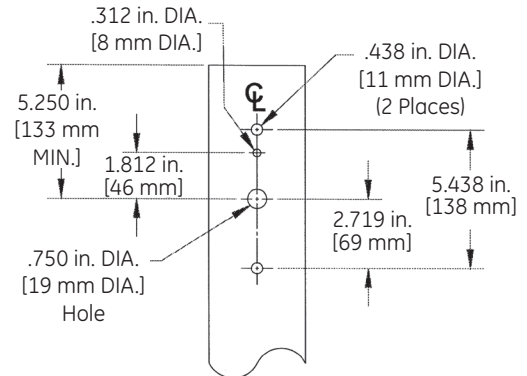
Drilling Templates for Slipfitter Arms & Arm Mount

SQUARE POLE MOUNTING



ROUND POLE MOUNTING

3.5 TO 4.5-inch (89 to 114mm) OD
round pole mounting arm



www.gelighting.com

GE and the GE Monogram are trademarks of the General Electric Company. All other trademarks are the property of their respective owners. Information provided is subject to change without notice. All values are design or typical values when measured under laboratory conditions. GE Lighting is a business of the General Electric Company. © 2017 GE.

OLP3090 (Rev 03/29/17) Based on 03/24/16 Revision



GE Evolve™

LED L-Series Wall Pack
EWLS

current
powered by GE



GE Evolve™

LED L-Series Wall Pack

EWLS



The **Evolve** LED L-Series Wall Pack, **EWLS**, is a designed replacement for 50W to 250W HID, while offering significant energy savings in a long-life LED wall pack. The EWLS's 2-screw housing design enables a fast and simplified installation. The low-watt Egress package (13W) is designed to meet recommended illuminance requirements for egress applications such as side and rear exit doors in commercial buildings and can meet NFPA 101 life safety lighting requirements when used with external battery backup.

Features:

- 1500 and 4000 lumen output
- High Brightness LEDs
- 70 CRI @ 3000K, 4000K, and 5000K typical
- L90 > 100,000 hours (1500lm), L90 > 60,000 hours (4000lm)
- Designed to replace 50W to 250W MH wallpacks
- Small Form Factor, <10 lbs
- 0-10V Dimming
- Motion Sensor & Button Photo Electric Sensors available
- Impact resistant tempered glass lens
- Zero up-light construction, full cut-off
- International Dark-Sky Association (IDA) Approved for 3000K CCT

Applications:

- Building entrances & perimeter lighting
- Side and rear exit doors
- Stairways and entry path
- Schools, Apartment Buildings, Hospitals
- Retail & Commercial Buildings
- Loading docks



To learn more about **GE Evolve LED L-Series Wall Pack**, go to: <http://products.currentbyge.com>

GE Evolve™

LED L-Series Wall Pack

EWLS



Project name _____
 Date _____
 Type _____

EWLS 01

7

PRODUCT	GENERATION	VOLTAGE	OPTICAL CODE	CRI	CCT	DIMMING	CONTROLS	MOUNTING	COLOR	OPTIONS
E = Evolve W = Wallpack L = L-series S = Standard	01 = Generation	0 = 120-277V* 1 = 120V 2 = 208V 3 = 240V 4 = 277V D = 347V	15AF = 1500lm, Asymmetric Forward 40AF = 4000lm, Asymmetric Forward	7 = 70 CRI*	30 = 3000K 40 = 4000K* 50 = 5000K *Select 3000K CCT for IDA Approved units	N = Non-Dimming D = Dimming* Leads ‡ ‡ Dimming not available at 1500lm	1 = None* 3 = Button PE *Must specify discrete voltage	FM = Flush Mount* CB = Conduit Box Mount** **Must be selected when ordering with Button PE, Motion Sensor, or 347V	DKBZ = Dark Bronze* BLCK = Black GRAY = Gray WHITE = White	H = Motion Sensor* ### = Special Options J = cUL/Canada W = Non-Graphical White Box

*Standard Option
 † = Motion Sensor not available at 1500lm

Claims Table:

OPTICAL CODE	DIST.	TYPICAL SYSTEM WATTS		TYPICAL INITIAL LUMENS			TYPICAL INITIAL LPW 120-277V			TYPICAL INITIAL LPW 347V			BUG RATING	
		120-277V	347V	3000K	4000K	5000K	3000K	4000K	5000K	3000K	4000K	5000K	3000K	4000K/5000K
15	AF	12	13	1,450	1,500	1,500	121	125	125	112	112	115	B1-U0-U0	B1-U0-U0
40	AF	37	38	3,880	4,000	4,000	105	108	108	102	105	105	B1-U0-U0	B1-U0-U0

CCT	IES FILE NAME 120-277V			IES FILE NAME 347V		
3000K	EWLS01_15AF730	-120-277V.IES		EWLS01D15AF730	-347V.IES	
4000K	EWLS01_15AF740	-120-277V.IES		EWLS01D15AF740	-347V.IES	
5000K	EWLS01_15AF750	-120-277V.IES		EWLS01D15AF750	-347V.IES	
3000K	EWLS01_40AF730	-120-277V.IES		EWLS01D40AF730	-347V.IES	
4000K	EWLS01_40AF740	-120-277V.IES		EWLS01D40AF740	-347V.IES	
5000K	EWLS01_40AF750	-120-277V.IES		EWLS01D40AF750	-347V.IES	



MODELS AVAILABLE THROUGH QUICKSHIP PROGRAM		
SKU #	CAT LOGIC	DESCRIPTION
93056860	EWLS01015AF740N1FMDKBZ	1500lm, 4000K, Flush Mount
93060201	EWLS01015AF750N1FMDKBZ	1500lm, 5000K, Flush Mount
93059497	EWLS01040AF740N1FMDKBZ	4000lm, 4000K, Flush Mount
93060200	EWLS01040AF750N1FMDKBZ	4000lm, 5000K, Flush Mount
93060202	35-434281R01	Conduit Box Mount (QTY 1)
93060203	35-966640-01	Conduit Box Mount (QTY 5)

Accessories:

PRODUCT ID	DETAIL	FINISH
E = Evolve W = Wallpack L = L-series S = Standard	A = Accessory E = Escutcheon Plate	1 = 10" x 12" 2 = 12" x 16" 3 = 12" x 20" DKBZ = Dark Bronze* BLCK = Black GRAY = Gray WHITE = White RAL customer colors available. Contact Manufacturer

PRODUCT ID	DETAIL
E = Evolve W = Wallpack L = L-series S = Standard	A = Accessory D = Diffuser

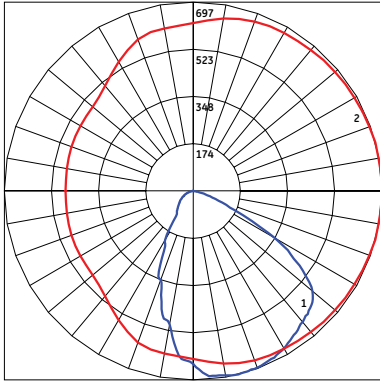
Motion Sensing Option:

- Intended for 8-25 ft. mounting heights.
- Provides a coverage area radius for walking motion of 25-30 ft.
- Provides 180° of coverage (~180° is blocked by the wall).
- Factory preset to 50% dimming with no occupancy.
- May be reprogrammed using additional remote programmer.
 - Remote programmer part number: WS FSIR-100 PROGRAMMER (197634)
- Photoelectric control is integrated through the motion sensor, and is offered as standard.

Photometrics:

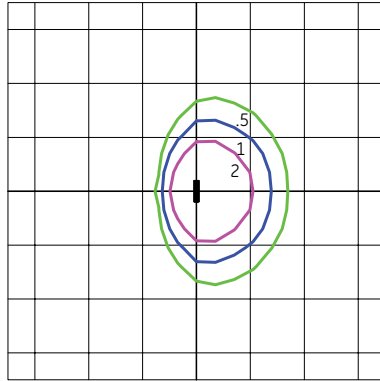
15AF: 1500 LUMEN, ASYMMETRIC FORWARD

EWLS01_15AF750_____ -120-277V.ies



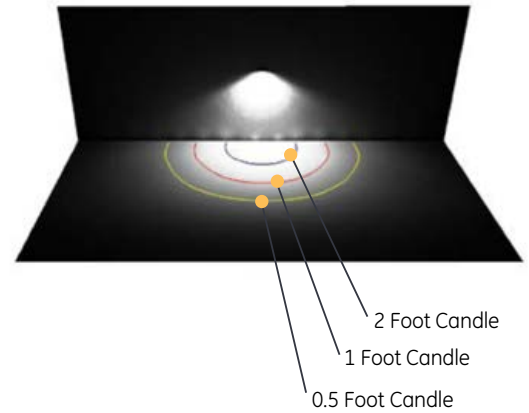
1 - Vertical plane through horizontal angle of maximum candpower at 0°

2 - Vertical plane through horizontal angle of 14°



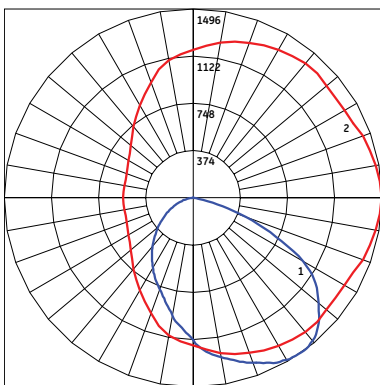
Grid Distance in Units of Mounting Height at 10' Initial Foot-candle Values at Grade.

SHOWN AT 10' MOUNTING HEIGHT FOR DISPLAY PURPOSES ONLY



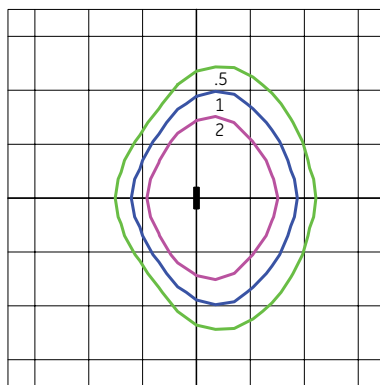
40AF: 4000 LUMEN, ASYMMETRIC FORWARD

EWLS01_40AF750_____ -120-277V.ies



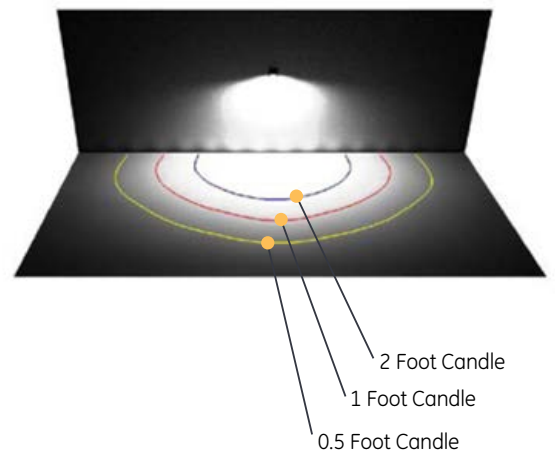
1 - Vertical plane through horizontal angle of maximum candpower at 0°

2 - Vertical plane through horizontal angle of 36°



Grid Distance in Units of Mounting Height at 10' Initial Foot-candle Values at Grade.

SHOWN AT 10' MOUNTING HEIGHT FOR DISPLAY PURPOSES ONLY



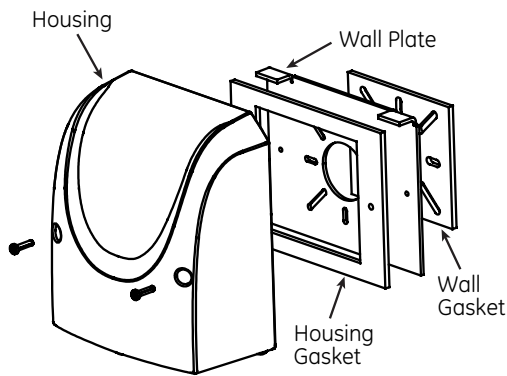


Figure 1: Wall Plate Install

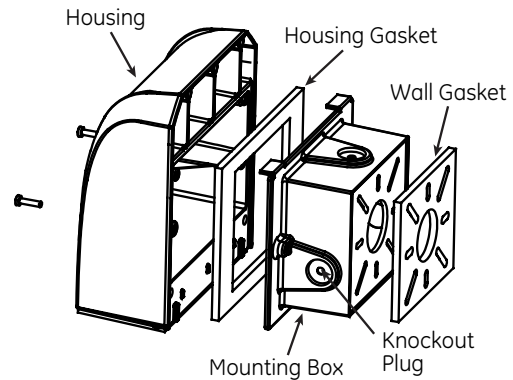


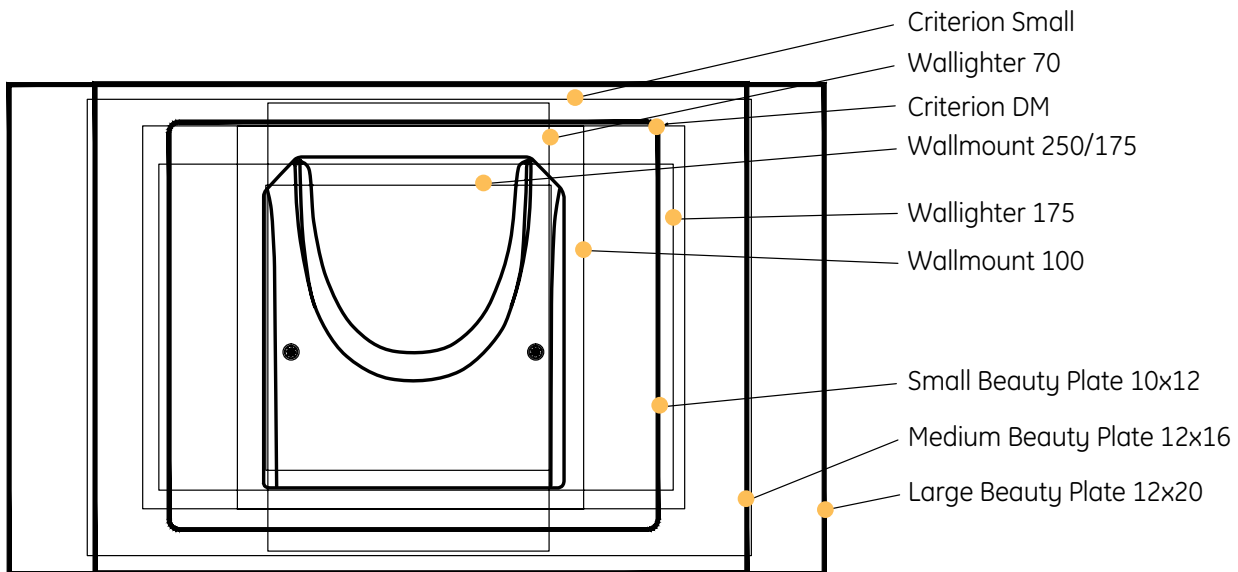
Figure 2: Mounting Box Install

Consult product Installation Instructions (GEH 6060) for detailed installation instructions.

Accessories:

Beauty Plates

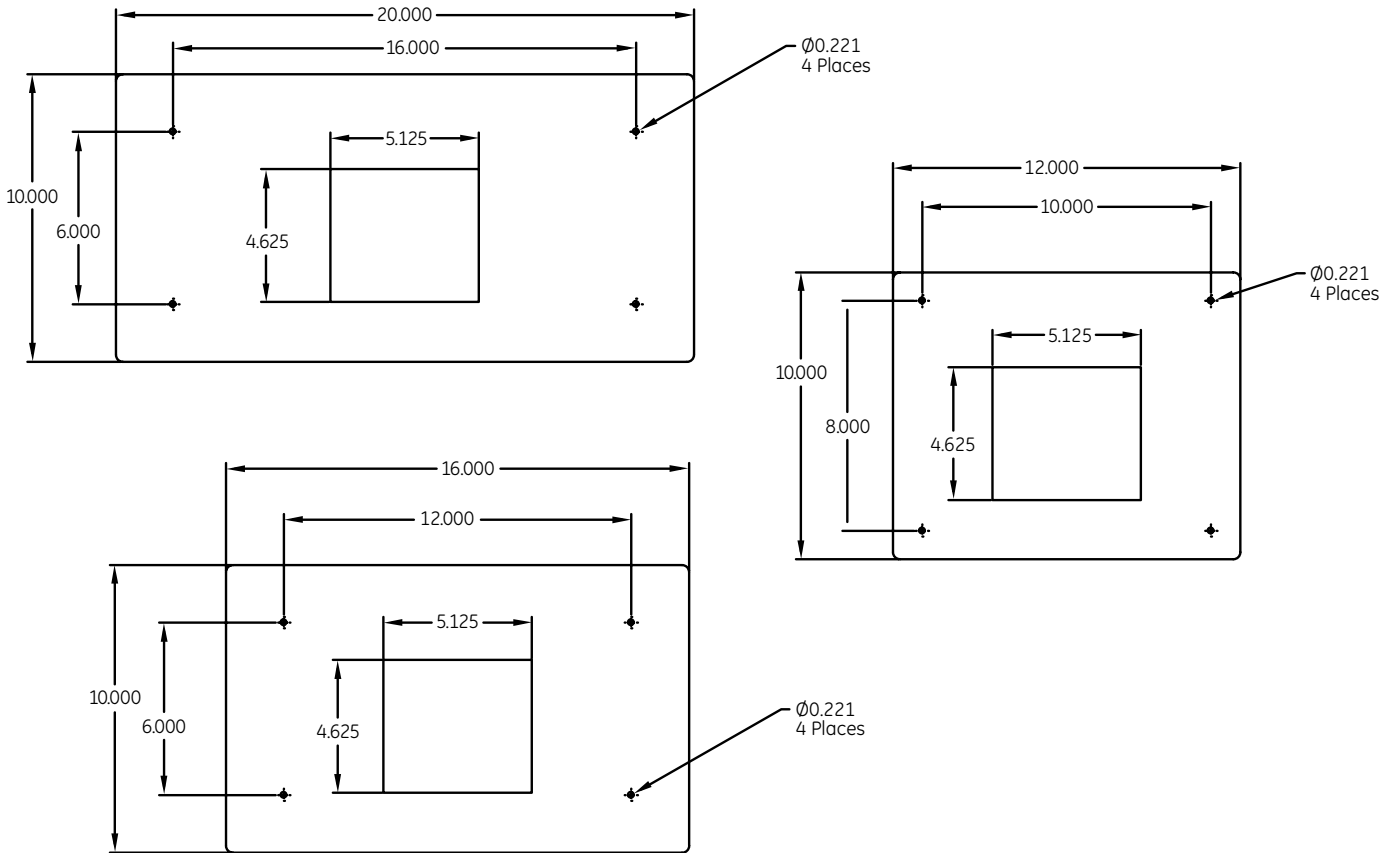
Cover the unsightly debris marks on your building façade with color matched wall pack beauty plates. Mounting hole patterns and dimensions are compatible with typical building surface fastening methods.



Accessories:

Mounting Holes

Mounting hole patterns and dimensions are compatible with typical building surface fastening methods.



Diffuser

Optional diffuser accessory utilizing ACRYLITE®, an acrylic sheet with an elegant texture which performs double duty with beauty and durability for any environment. This added texture diffuses surface reflections. Transmits 90% of the light through diffuser.