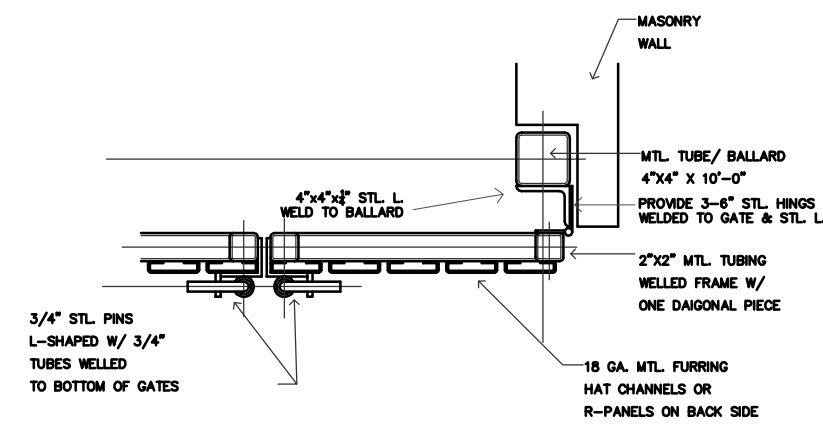
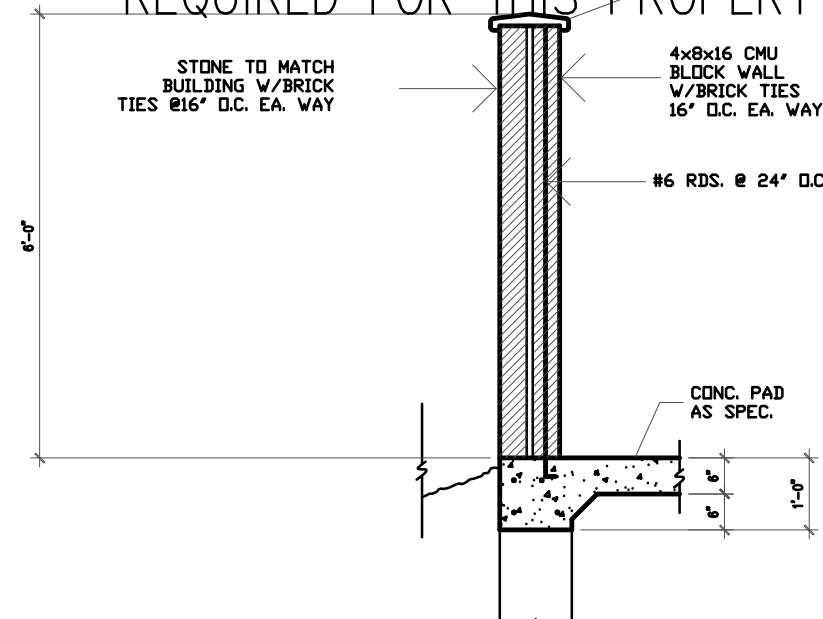


1 DUMPSTER PLAN
1/4" = 1'-0"

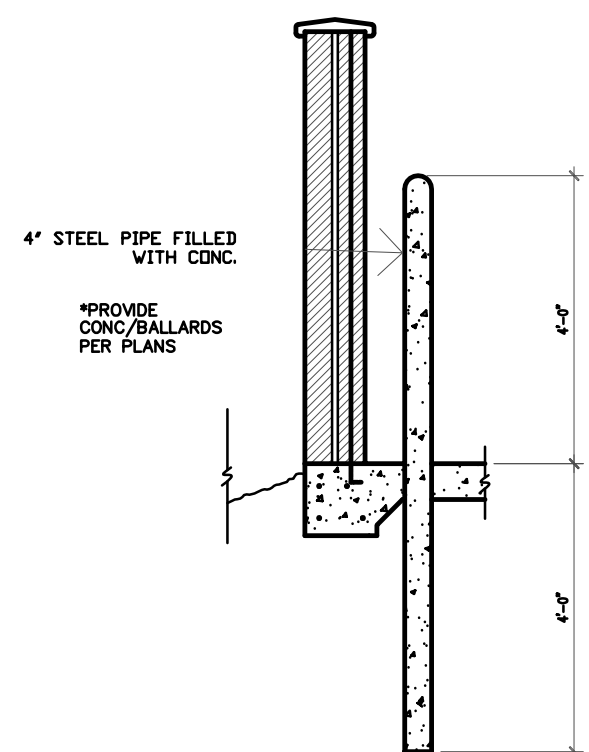


2 DETAIL @ BALLARD
NO SCALE

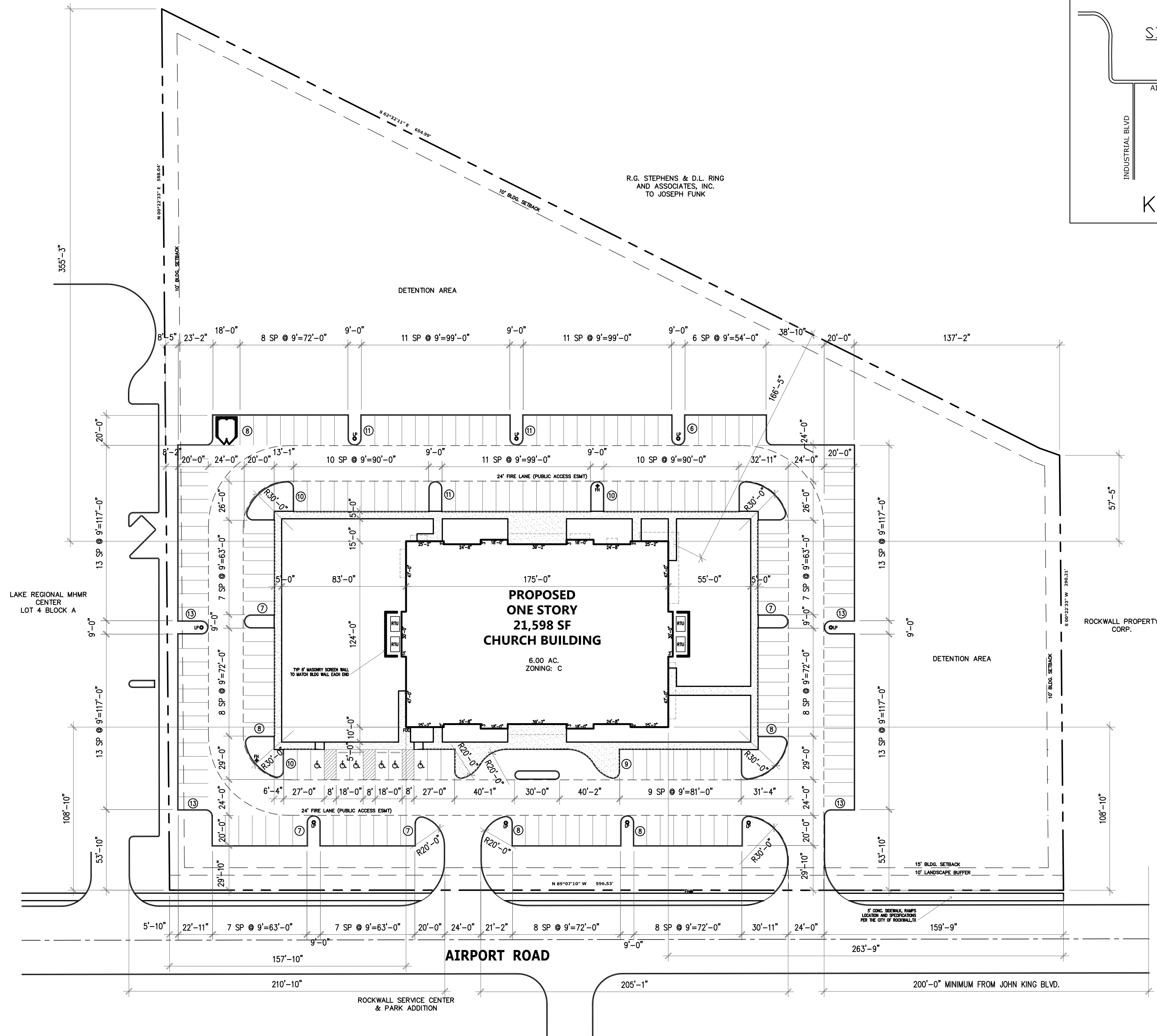
THERE IS NO TREE MITIGATION
REQUIRED FOR THIS PROPERTY



3 SECTION @ DUMPSTER WALL



4 DETAIL @ BALLARD
NO SCALE



CORNERSTONE

BEING A 6.0 AC. TRACT OF LAND SITUATED IN THE N. BUTLER SURVEY, ABSTRACT NO. 20 IN THE CITY OF ROCKWALL, ROCKWALL COUNTY, TEXAS
ADDRESS 1565 AIRPORT ROAD

NOTE: ALL DIMENSIONS ARE TO FACE OF CURB
ALL SIDEWALKS SHALL BE 3,000 PSI CONC
MIN 5.5 SACK MIX. 6\"/>

PARKING DATA

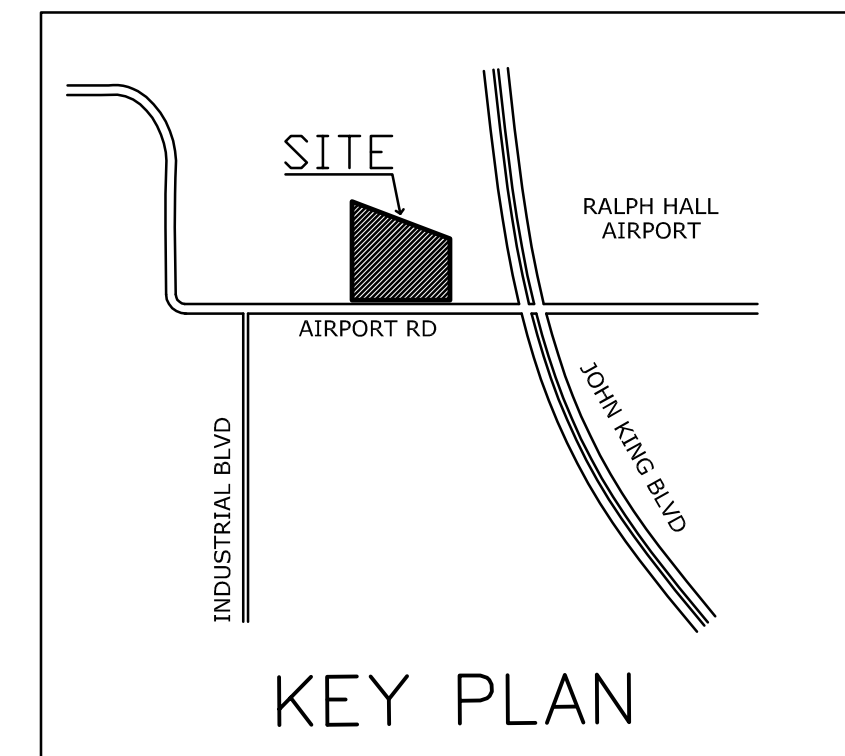
CHURCH 592 SEATS @ 1/4 = 148
148 PARKING SPACES REQUIRED
198 PARKING SPACES PROVIDED
192 PARKING SPACES & 6 HANDICAP SPACE

**OWNER
CORNERSTONE CHURCH**

1950 ALPHA DRIVE
ROCKWALL, TEXAS 75087
214-771-4140
CASE # (SP2017-025)

PROPERTY AREA (GROSS): 261,357.0 SF 6.0 AC
TOTAL SQUARE FOOTAGE OF IMPERVIOUS SURFACE: 100,300 SF

© COPYRIGHT 2017 MERSHAWN ARCHITECTS, INC.
NO PRINTING OR COPYING IS ALLOWED
WITHOUT PERMISSION FROM MERSHAWN.



RESIDENTIAL RESTAURANTS
INSTITUTIONAL ARCHITECTS
MEDICAL COMMERCIAL CHURCHES
MERSHAWN ARCHITECTS
2313 RIDGE ROAD #103
ROCKWALL, TEXAS 75087
PHONE: 972-722-9302
FAX: 972-249-2051

No.	Date	Revision	By








CORNERSTONE COMMUNITY CHURCH
ROCKWALL, TEXAS
SITE PLAN

Scale: 1" = 40'-0"

Date:	08/24/17
Project No.:	170201
Designed:	GW
Drawn:	GW
Checked:	WM

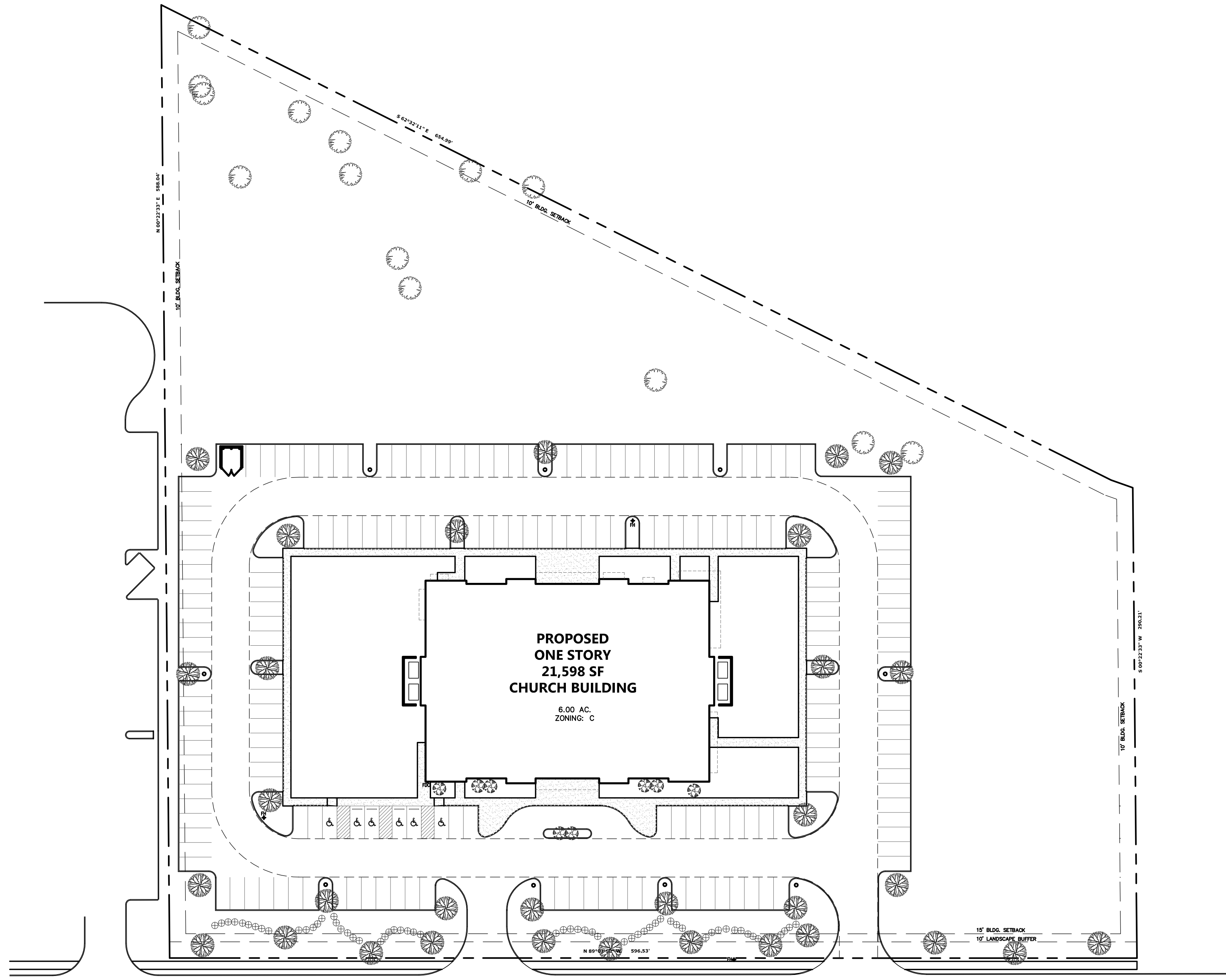
SHEET
A1 OF

-  EXISTING CEDAR AND HACKBERRY
 -  LIVE OAKS (27)
INSTALLED WITH A MIN. 4" CALIPER
 -  RED BUD (2)
4' HIGH @ INSTALLATION
 -  INDIAN HAWTHORNE (8)
PARKING SCREEN
PLANTS SHALL BE A MINIMUM OF 5-GALLONS W/A MINIMUM HEIGHT @ PLANTING OF 15" & SHALL CREATE A MINIMUM 2' TALL SCREEN WITHIN TWO YEARS OF PLANTING. SHALL BE PLANTED @ 36" O.C.
 -  BOXWOOD BUSH (58)
PLANTS SHALL BE A MINIMUM OF 5-GALLONS W/A MINIMUM HEIGHT @ PLANTING OF 15" & SHALL CREATE A MINIMUM 2' TALL SCREEN WITHIN TWO YEARS OF PLANTING. SHALL BE PLANTED @ 36" O.C.
- ALL AREAS NOT SHOWN AS SPECIFIC PLANT MATERIAL SHALL BE HYDROMULCHED, BERMUDA.
- IN ORDER TO MEET BUDGET TREES SPECIFIED MAY NOT BE USED OTHER TREES FROM THE APPROVED CITY OF ROCKWALL PLANT LIST MAY BE SUITABLE FOR SUBSTITUTION.
- REQUIRED LANDSCAPE AREAS SHALL BE IRRIGATED BY AN AUTOMATIC UNDERGROUND IRRIGATION SYSTEM. SYSTEM SHALL HAVE FREEZE GUARD AND RAINSTAT.
- CONTRACTOR SHALL SUPPLY SLEEVES AS NEEDED FOR IRRIGATION.
- TREES AND PLANTS SHALL BE PLANTED NO CLOSER THAN WITHIN 4' OF CURB AT PARKING SPACES AND NO CLOSER THAN 5' FROM ANY WATER, SEWER, OR STORM SEWER LINES.
- THERE IS NO TREE MITIGATION REQUIRED FOR THIS PROPERTY

ABSTRACT NO. 20 -N. BUTLER SURVEY

- ZONING: C -COMERCIAL
- PROPOSED USE: CHURCH
- PROPERTY AREA (GROSS): 261,357.0 SF 6.0 AC
- BUILDING AREA: 21,598 SF
- BUILDING HEIGHT: SINGLE STORY - 37'-0"
- LOT COVERAGE: 8.3% F.A.R. = 0.008:1
- PARKING REQUIRED: 3 SPACE/SEAT 592/3 = 197 SPACES REQUIRED
- HANDICAP REQUIRED 6 ACCESSIBLE IN 150-200 SPACES 6 ACCESSIBLE PROVIDED
- TOTAL PARKING PROVIDED: 198 SPACES
- TOTAL SQUARE FOOTAGE OF IMPERVIOUS SURFACE: 100,300 SF

	REQUIRED	PROVIDED
1. STREET TREES 1 CANDOPY PER 50'	12	12
2. SITE TREES - ONE TREE W/ A CALIPER OF AT LEAST 2" FOR EACH 20,000 SF OF PARKING. 1 PER EVERY TEN REQ. PARKING SPACES	20	20
3. LANDSCAPE BUFFER	10'	10'
4. SCREENING OF OFF STREET PARKING	YES	YES
5. TOTAL LANDSCAPE AREA 10% REQUIRED	39,204 SF	161,057 SF



CORNERSTONE
BEING A 6.0 AC. TRACT OF LAND SITUATED IN THE N. BUTLER SURVEY, ABSTRACT NO. 20 IN THE CITY OF ROCKWALL, ROCKWALL COUNTY, TEXAS
ADDRESS 1565 AIRPORT ROAD

**OWNER
CORNERSTONE CHURCH**
1950 ALPHA DRIVE
ROCKWALL, TEXAS 75087
214-771-4140
CASE # (SP2017-025)

- THESE DRAWINGS ARE DIAGRAMMATIC IN NATURE AND ARE NOT INTENDED TO INDICATE EACH AND EVERY FITTING, OFFSET, OR OTHER APPURTENANCE NECESSARY TO COMPLETE THE SYSTEM.
- IT IS THE CONTRACTOR'S RESPONSIBILITY TO REVIEW THE DOCUMENTS AND INCLUDE ALL NECESSARY ITEMS TO PROVIDE A COMPLETE OPERATIONAL SYSTEM.
- ANY DISCREPANCIES NOTED BY THE CONTRACTOR SHALL BE BROUGHT TO THE ATTENTIONS OF THE ARCHITECT (IN WRITING) BEFORE BIDDING THIS PROJECT.
- AFTER BIDS ARE TURNED IN, THE CONTRACTOR SHALL COMPLETE THE SYSTEMS AT NO ADDITIONAL COST.
- PLUMBING, MECHANICAL, AND ELECTRICAL SUBCONTRACTORS ARE RESPONSIBLE FOR COORDINATING ALL COMPONENTS TO INSURE COMPLETE AND WORKING SYSTEMS EACH SUBCONTRACTOR SHALL REVIEW ALL DRAWINGS FOR COMPLIANCE.
- THE ARCHITECT WILL BE RESPONSIBLE TO DETERMINE WHICH TRADE SHALL PROVIDE AND INSTALL ANY COMPONENTS MISSED FOR WORKING SYSTEMS AS NEEDED.

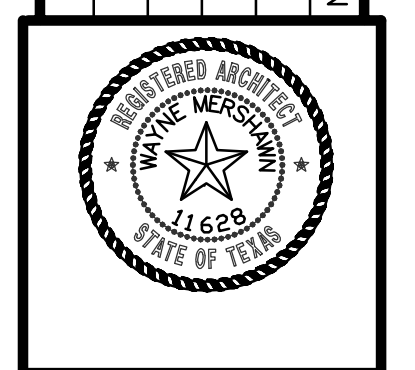
RESIDENTIAL RESTAURANTS
INSTITUTIONAL
ARCHITECTS

MEDICAL COMMERCIAL
CHURCHES
MERSHAWN

2313 RIDGE ROAD #103
ROCKWALL, TEXAS 75087

PHONE: 972-722-9302
FAX: 972-249-2081

No.	Date	Revision	By



CORNERSTONE COMMUNITY CHURCH
ROCKWALL, TEXAS

LANDSCAPE PLAN

Scale: 1" = 40'-0"

Date: 08/24/17

Project No.: 170201

Designed: GW

Drawn: GW

Checked: WM

MEP CONTACT

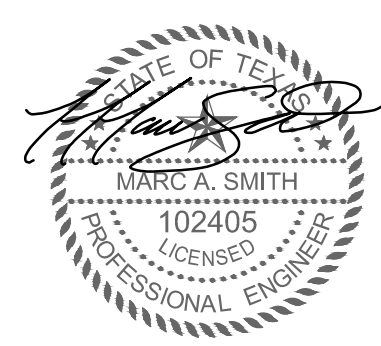
Mr. Engineer, Inc. Marc Smith, P.E.
MrEngTx.com 214.207.2918
 Marc@MrEngTx.com

Project No. 17000

This document is released for the purpose of Permit Application on

August 31, 2017

under the authority of
Mr. Engineer, Inc.,
Texas Firm Registration No. 13221



RESIDENTIAL RESTAURANTS ARCHITECTS

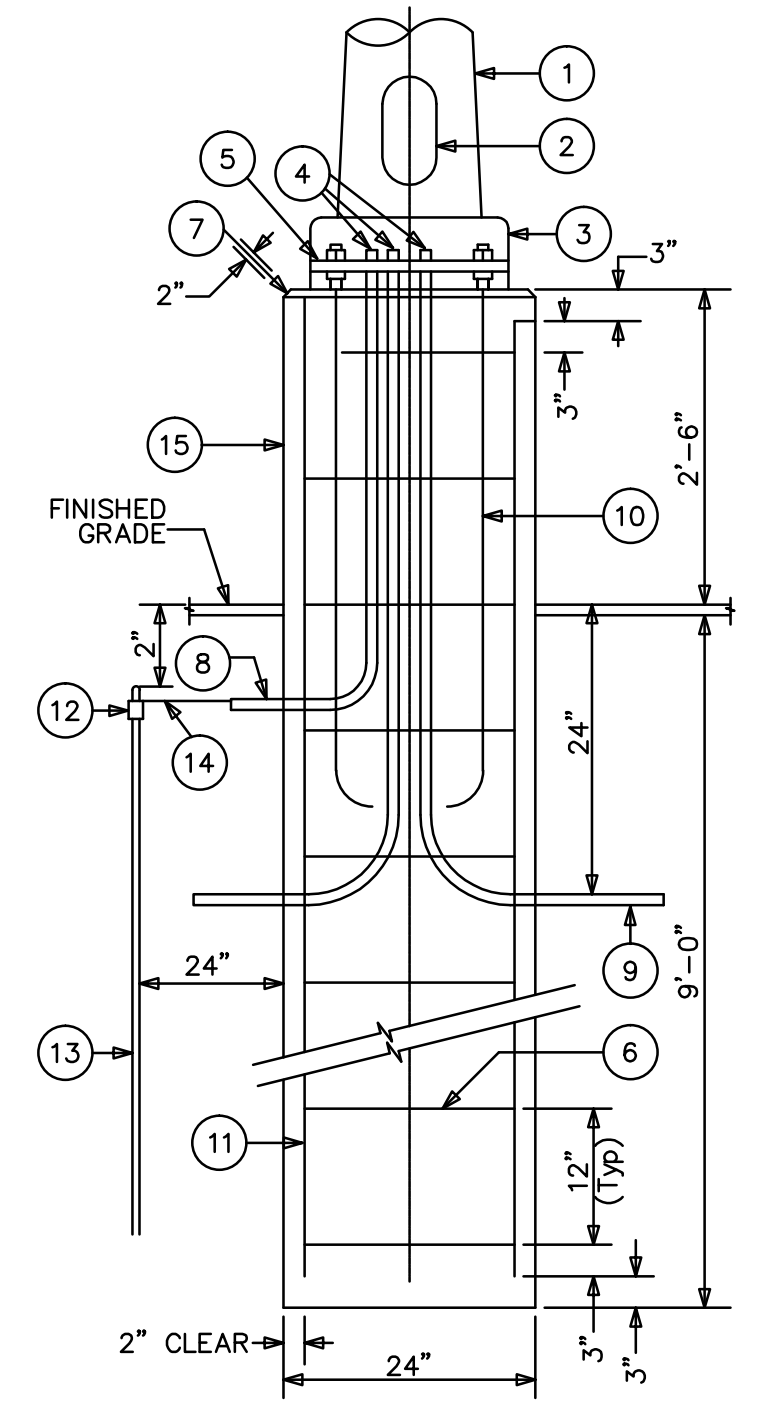
INSTITUTIONAL ARCHITECTS

MEDICAL COMMERCIAL CHURCHES

MERSHAWN ARCHITECTS

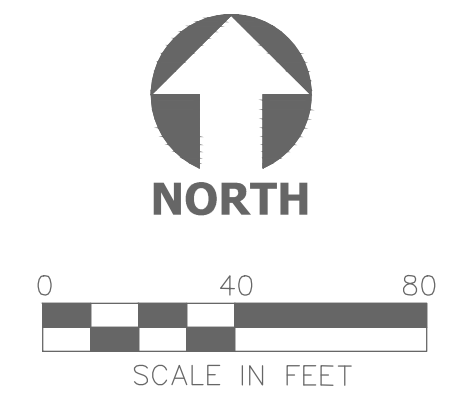
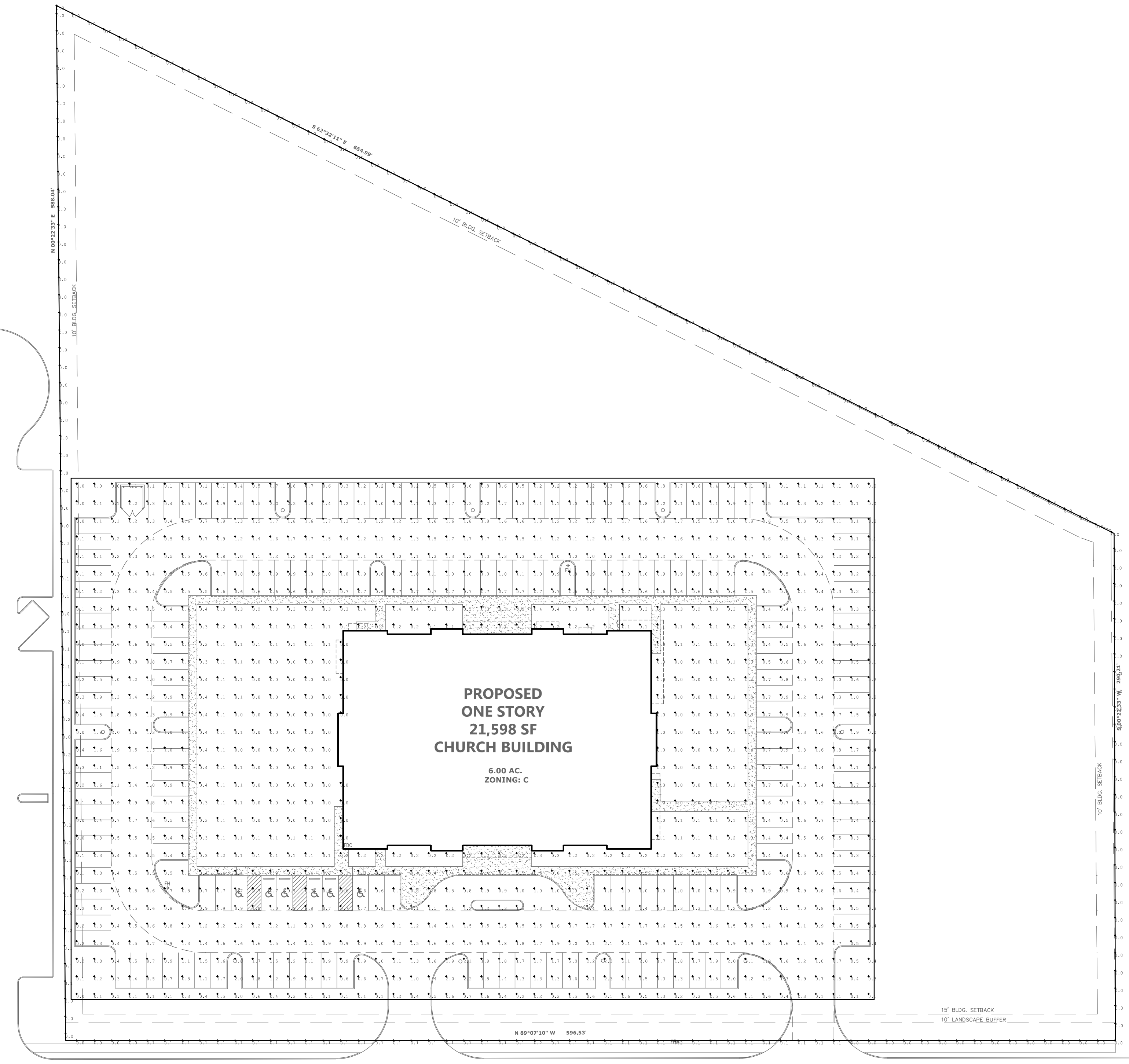
2313 RIDGE ROAD #103
ROCKWALL, TEXAS 75087

PHONE: 972-722-9302
FAX: 972-249-0081



- POLE BASE NOTES:**
1. LIGHTING STANDARD.
 2. HANDHOLE: PROVIDE INTERIOR GROUNDING LUG ACCESSIBLE FROM OPENING. PROVIDE COVER W/ STAINLESS STEEL SCREWS.
 3. BASE COVER: MATCH MATERIAL OF POLE.
 4. CONNECT CONDUITS TO GROUNDING LUG AND GROUNDING CONDUCTOR TO GROUND ROD.
 5. PROVIDE BOTTOM NUT FOR LEVELING AND DOUBLE NUTS ON TOP.
 6. NO. 4 STEEL REINFORCING TIES ON 12" CENTERS.
 7. CHAMFER EDGES ON BASE.
 8. 1" RIGID GALVANIZED CONDUIT.
 9. RIGID GALVANIZED STEEL CONDUITS TO EDGE OF CONCRETE BASE.
 10. GALVANIZED STEEL ANCHOR BOLTS, FURNISHED W/ POLE, AS REQUIRED BY MANUFACTURER.
 11. EIGHT (8) NO. 4 STEEL REINFORCING RODS.
 12. THERMOWELD CONNECTOR.
 13. 3/4" X 10'-0" COPPER CLAD GROUND ROD.
 14. NO. 6 BARE STRANDED COPPER GROUND WIRE; CONNECT TO GROUND ROD, CONDUITS AND GROUNDING LUG.
 15. CONCRETE BASE SHALL BE HAND RUBBED TO REMOVE ALL IRREGULARITIES & PROVIDE SMOOTH FINISH. PAINT AS DIRECTED BY ARCHITECT.

2 POLE BASE DETAIL
SCALE: NONE



1 PHOTOMETRIC SITE PLAN
SCALE: 1" = 40'-0"

Calculation Summary						
Calc. Height (ft.)	Units	Avg	Max	Min	Avg/Min	
N.A.	Fc	0.03	0.2	0.0	N.A.	PROPERTY LINE
0	Fc	0.68	2.3	0.0	N.A.	SITE

Luminaire Schedule								
Symbol	Type	Qty	Manufacturer / Catalog Number	Total Lumen Output	Total Input Watts	Ballast Factor	Light Lost Factor	User Defined Factor
□	P1HS	9	DSXO LED 40C 1000 40K T3M MVOLY HS	11923	138	1.000	0.808	1.000

NOTE: ALL FIXTURES SHALL BE INSTALLED WITH 25' POLE ON 30" BASE. REFER TO DETAIL 2, THIS SHEET FOR BASE REQUIREMENTS. REFER TO SUBMITTALS FOR ADDITIONAL REQUIREMENTS AND SPECIFICATIONS.

CORNERSTONE
BEING A 6.0 AC. TRACT OF LAND SITUATED IN THE
N. BUTLER SURVEY, ABSTRACT NO. 20 IN THE
CITY OF ROCKWALL, ROCKWALL COUNTY, TEXAS

OWNER
CORNERSTONE CHURCH
1950 ALPHA DRIVE
ROCKWALL, TEXAS 75087
914-771-4140

CORNERSTONE COMMUNITY CHURCH
ROCKWALL, TEXAS

No.	Date	Revision	By

Scale: 1" = 40'-0"
Date: MM/DD/YY
Project No.: 170201
Designed: GW
Drawn: GW
Checked: WM

SHEET
SP 1 OF
1



D-Series Size 0 LED Area Luminaire



d#series

Specifications

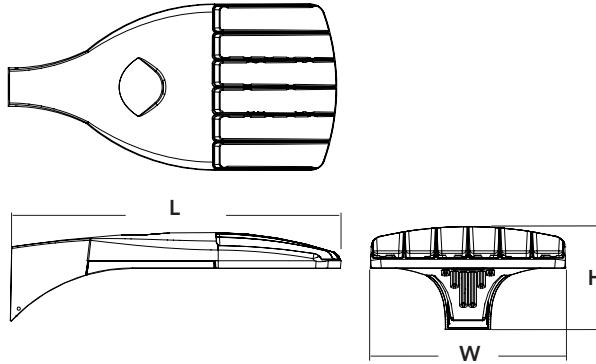
EPA: 0.95 ft²
(.09 m²)

Length: 26"
(66.0 cm)

Width: 13"
(33.0 cm)

Height: 7"
(17.8 cm)

Weight (max): 16 lbs
(7.25 kg)



Catalog
Number

Notes

Type

Hit the Tab key or mouse over the page to see all interactive elements.

A+ Capable Luminaire

This item is an A+ capable luminaire, which has been designed and tested to provide consistent color appearance and system-level interoperability.

- All configurations of this luminaire meet the Acuity Brands' specification for chromatic consistency
- This luminaire is A+ Certified when ordered with DTL® controls marked by a **shaded background**. DTL DLL equipped luminaires meet the A+ specification for luminaire to photocontrol interoperability¹
- This luminaire is part of an A+ Certified solution for ROAM®X or XPoint™ Wireless control networks, providing out-of-the-box control compatibility with simple commissioning, when ordered with drivers and control options marked by a **shaded background**¹

To learn more about A+, visit www.acuitybrands.com/aplus.

- See ordering tree for details.
- A+ Certified Solutions for ROAM require the order of one ROAM node per luminaire. Sold Separately: [Link to Roam](#); [Link to DTL DLL](#)

A+ Capable options indicated by this color background.

Ordering Information

EXAMPLE: DSX0 LED 40C 1000 40K T3M MVOLT SPA DDBXD

DSX0 LED		Drive current		Color temperature		Distribution		Voltage	Mounting		
Series	LEDs										
DSX0 LED	Forward optics	530	530 mA	30K	3000 K	T1S	Type I short	T5S	Type V short	MVOLT ⁴	Shipped included SPA Square pole mounting RPA Round pole mounting WBA Wall bracket SPUMBA Square pole universal mounting adaptor ⁷ RPUMBA Round pole universal mounting adaptor ⁷ Shipped separately KMA8 DDBXD U Mast arm mounting bracket adaptor (specify finish) ⁸
	20C 20 LEDs (one engine)	700	700 mA	40K	4000 K	T2S	Type II short	T5M	Type V medium	120 ⁵	
	40C 40 LEDs (two engines)	1000	1000 mA (1 A)	50K	5000 K	T2M	Type II medium	T5W	Type V wide	208 ⁵	
	Rotated optics			AMBPC	Amber phosphor converted ²	T3S	Type III short	BLC	Backlight control ^{2,3}	240 ⁵	
	30C 30 LEDs (one engine) ¹					T3M	Type III medium	LCCO	Left corner cutoff ^{2,3}	277 ⁵	
						T4M	Type IV medium	RCCO	Right corner cutoff ^{2,3}	347 ^{5,6}	
						TFTM	Forward throw medium			480 ^{5,6}	
						TSVS	Type V very short				

Control options		Other options	Finish (required)
Shipped installed		Shipped installed	
PER	NEMA twist-lock receptacle only (control ordered separate) ⁹	BL30	Dark bronze
PER5	Five-wire receptacle only (control ordered separate) ^{9,10}	BL50	Black
PER7	Seven-wire receptacle only (control ordered separate) ^{9,10}	PNMTDD3	Natural aluminum
DMG	0-10V dimming extend out back of hosing for external control (no controls)(leads exit fixture) ¹¹	PNMTSD3	White
PIR	Bi-level, motion/ambient sensor, 8-15' mounting height, ambient sensor enabled at 5fc ^{12,13}	PNMT6D3	Textured dark bronze
PIRH	Bi-level, motion/ambient sensor, 15-30' mounting height, ambient sensor enabled at 5fc ^{12,13}	PNMT7D3	Textured black
PIR1FC3V	Bi-level, motion/ambient sensor, 8-15' mounting height, ambient sensor enabled at 1fc ^{12,13}	FAO	Textured natural aluminum
PIRH1FC3V	Bi-level, motion/ambient sensor, 15-30' mounting height, ambient sensor enabled at 1fc ^{12,13}		Textured white



Ordering Information Cont.

Accessories

Ordered and shipped separately.

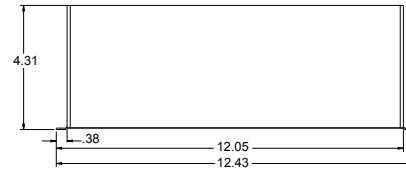
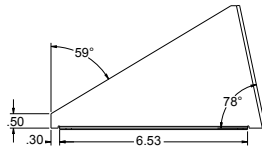
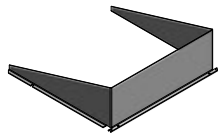
DLL127F 1.5 JU	Photocell - SSL twist-lock (120-277V) ¹⁹
DLL347F 1.5 CUL JU	Photocell - SSL twist-lock (347V) ¹⁹
DLL480F 1.5 CUL JU	Photocell - SSL twist-lock (480V) ¹⁹
DSHORT SBK U	Shorting cap ¹⁹
DSXOEGS DDBXD U	External glare shield
DSXOHS 20C U	House-side shield for 20 LED unit ¹⁸
DSXOHS 30C U	House-side shield for 30 LED unit ¹⁸
DSXOHS 40C U	House-side shield for 40 LED unit ¹⁸
DSXODDL U	Diffused drop lens (polycarbonate) ¹⁸
PUMBA DDBXD U*	Square and round pole universal mounting bracket adaptor (specify finish) ²⁰
KMA8 DDBXD U	Mast arm mounting bracket adaptor (specify finish) ⁸

For more control options, visit [DTL](#) and [ROAM](#) online.

NOTES

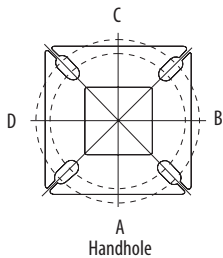
- 30 LEDs (30C option) and rotated options (L90 or R90) only available together.
- AMBPC is not available with BLC, LCCO or RCCO.
- Not available with HS or DDL.
- MVOLT driver operates on any line voltage from 120-277V (50/60 Hz).
- Single fuse (SF) requires 120V, 277V or 347V. Double fuse (DF) requires 208V, 240V or 480V.
- Not available in 20C or 30C at 530mA. Not available with BL30, BL50 or PNMPT options.
- Existing drilled pole only. Available as a separate combination accessory; for retrofit use only: PUMBA (finish) U; 1.5 G vibration load rating per ANCI C136.31.
- Must order fixture with SPA mounting. Must be ordered as a separate accessory; see Accessories information. For use with 2-3/8" mast arm (not included).
- Photocell ordered and shipped as a separate line item from Acuity Brands Controls. See accessories. Shorting Cap included.
- If ROAM[®] node required, it must be ordered and shipped as a separate line item from Acuity Brands Controls. Shorting Cap included.
- DMG option for 347V or 480V requires 1000mA.
- Reference Motion Sensor table on page 3.
- Reference PER Table on page 3 to see functionality.
- Requires (2) separately switched circuits.
- Not available with 347V, 480V, PNMPT, PIR1FC3V or PIRH1FC3V. For PER5 or PER7 see PER Table on page 3.
- Not available with 347V, 480V, PNMPT, PIR1FC3V or PIRH1FC3V. For PER5 or PER7 see PER Table on page 3. Separate Dusk to Dawn required.
- Not available with other controls options.
- Not available with BLC, LCCO and RCCO distribution. Also available as a separate accessory; see Accessories information.
- Requires luminaire to be specified with PER option. See PER Table.
- For retrofit use only.

External Glare Shield



Drilling

HANDHOLE ORIENTATION



Tenon Mounting Slipfitter **

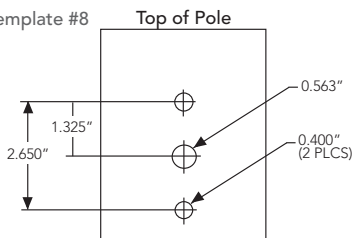
Tenon O.D.	Single Unit	2 at 180°	2 at 90°	3 at 120°	3 at 90°	4 at 90°
2-3/8"	AST20-190	AST20-280	AST20-290			
2-7/8"	AST25-190	AST25-280	AST25-290			
4"	AST35-190	AST35-280	AST35-290	AST35-320	AST35-390	AST35-490

Pole drilling nomenclature: # of heads at degree from handhole (default side A)

DM19AS	DM28AS	DM29AS	DM32AS	DM39AS	DM49AS
1 @ 90°	2 @ 280°	2 @ 90°	3 @ 120°	3 @ 90°	4 @ 90°
Side B	Side B & D	Side B & C	Round pole only	Side B, C, & D	Sides A, B, C, D

Note: Review luminaire spec sheet for specific nomenclature

Template #8



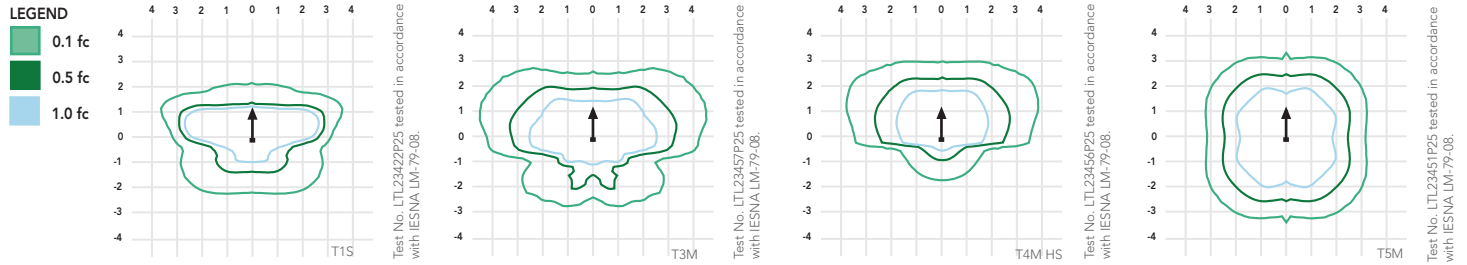
Pole top or tenon O.D.	4.5" @ 90°	4" @ 90°	3.5" @ 90°	3" @ 90°	4.5" @ 120°	4" @ 120°	3.5" @ 120°	3" @ 120°
DSX SPA	Y	Y	Y	N	-	-	-	-
DSX RPA	Y	Y	N	N	Y	Y	Y	Y
DSX SPUMBA	Y	N	N	N	-	-	-	-
DSX RPUMBA	N	N	N	N	Y	Y	Y	N

*3 fixtures @120 require round pole top/tenon.

Photometric Diagrams

To see complete photometric reports or download .ies files for this product, visit Lithonia Lighting's [D-Series Area Size 0 homepage](#).

Isfootcandle plots for the DSX0 LED 40C 1000 40K. Distances are in units of mounting height (20').



Performance Data

Lumen Ambient Temperature (LAT) Multipliers

Use these factors to determine relative lumen output for average ambient temperatures from 0-40°C (32-104°F).

Ambient		Lumen Multiplier
0°C	32°F	1.02
10°C	50°F	1.01
20°C	68°F	1.00
25°C	77°F	1.00
30°C	86°F	1.00
40°C	104°F	0.99

Electrical Load

Number of LEDs	Drive Current (mA)	System Watts	Current (A)					
			120	208	240	277	347	480
20C	530	35	0.34	0.22	0.21	0.20	--	--
	700	45	0.47	0.28	0.24	0.22	0.18	0.14
	1000	72	0.76	0.45	0.39	0.36	0.36	0.26
30C	530	52	0.51	0.31	0.28	0.25	--	--
	700	70	0.72	0.43	0.37	0.34	0.25	0.19
	1000	104	1.11	0.64	0.56	0.49	0.47	0.34
40C	530	68	0.71	0.41	0.36	0.33	0.25	0.19
	700	91	0.94	0.55	0.48	0.42	0.33	0.24
	1000	138	1.45	0.84	0.73	0.64	0.69	0.50

Projected LED Lumen Maintenance

Data references the extrapolated performance projections for the platforms noted in a 25°C ambient, based on 10,000 hours of LED testing (tested per IESNA LM-80-08 and projected per IESNA TM-21-11).

To calculate LLF, use the lumen maintenance factor that corresponds to the desired number of operating hours below. For other lumen maintenance values, contact factory.

Operating Hours	0	25,000	50,000	100,000
Lumen Maintenance Factor	DSX0 LED 20C 1000			
	1	0.98	0.96	0.93
	DSX0 LED 40C 1000			
	1	0.98	0.95	0.90
	DSX0 LED 40C 700			
	1	0.99	0.99	0.99

Motion Sensor Default Settings

Option	Dimmed State	High Level (when triggered)	Photocell Operation	Dwell Time	Ramp-up Time	Ramp-down Time
PIR or PIRH	3V (37%) Output	10V (100%) Output	Enabled @ 5FC	5 min	3 sec	5 min
*PIR1FC3V or PIRH1FC3V	3V (37%) Output	10V (100%) Output	Enabled @ 1FC	5 min	3 sec	5 min

*for use with Inline Dusk to Dawn or timer.

PER Table

Control	PER (3 wire)	PER5 (5 wire)		PER7 (7 wire)	
		Wire 4/Wire5	Wire 4/Wire5	Wire 6/Wire7	
Photocontrol Only (On/Off)	✓	⚠	Wired to dimming leads on driver	⚠	Wired to dimming leads on driver
ROAM	✗	✓	Wired to dimming leads on driver	⚠	Wired to dimming leads on driver
ROAM with Motion (ROAM on/off only)	✗	⚠	Wires Capped inside fixture	⚠	Wires Capped inside fixture
Future-proof*	✗	⚠	Wired to dimming leads on driver	✓	Wired to dimming leads on driver
Future-proof* with Motion	✗	⚠	Wires Capped inside fixture	✓	Wires Capped inside fixture

- ✓ Recommended
- ✗ Will not work
- ⚠ Alternate

*Future-proof means: Ability to change controls in the future.



Lumen Output

Lumen values are from photometric tests performed in accordance with IESNA LM-79-08. Data is considered to be representative of the configurations shown, within the tolerances allowed by Lighting Facts. Contact factory for performance data on any configurations not shown here.

Forward Optics																							
LEDs	Drive Current (mA)	System Watts	Dist. Type	30K (3000 K, 70 CRI)					40K (4000 K, 70 CRI)					50K (5000 K, 70 CRI)					AMBPC (Amber Phosphor Converted)				
				Lumens	B	U	G	LPW	Lumens	B	U	G	LPW	Lumens	B	U	G	LPW	Lumens	B	U	G	LPW
20C (20 LEDs)	530 mA	35 W	T1S	4,079	1	0	1	117	4,380	1	0	1	125	4,408	1	0	1	126	2,541	1	0	1	73
			T2S	4,206	1	0	1	120	4,516	1	0	1	129	4,544	1	0	1	130	2,589	1	0	1	74
			T2M	4,109	1	0	1	117	4,413	1	0	1	126	4,440	1	0	1	127	2,539	1	0	1	73
			T3S	4,104	1	0	1	117	4,407	1	0	1	126	4,435	1	0	1	127	2,558	1	0	1	73
			T3M	4,142	1	0	1	118	4,447	1	0	2	127	4,475	1	0	2	128	2,583	1	0	1	74
			T4M	4,198	1	0	1	120	4,508	1	0	2	129	4,536	1	0	1	130	2,570	1	0	1	73
			TFTM	4,135	1	0	1	118	4,440	1	0	1	127	4,468	1	0	1	128	2,540	1	0	1	73
			TSVS	4,368	2	0	0	125	4,691	2	0	0	134	4,720	2	0	0	135	2,650	1	0	0	76
			TSS	4,401	2	0	2	126	4,725	2	0	0	135	4,755	2	0	0	136	2,690	1	0	0	77
			TSM	4,408	2	0	1	126	4,734	3	0	1	135	4,763	3	0	1	136	2,658	2	0	0	76
			TSW	4,344	3	0	1	124	4,664	3	0	1	133	4,693	3	0	1	134	2,663	2	0	1	76
			BLC	3,071	1	0	1	88	3,297	1	0	1	94	3,318	1	0	1	95					
	LCCO	2,983	1	0	1	85	3,204	1	0	1	92	3,224	1	0	1	92							
	RCCO	2,983	1	0	1	85	3,204	1	0	1	92	3,224	1	0	1	92							
	T1S	5,181	1	0	1	115	5,563	1	0	1	124	5,598	1	0	1	124	3,144	1	0	1	70		
	T2S	5,342	1	0	1	119	5,736	1	0	1	127	5,772	1	0	1	128	3,203	1	0	1	71		
	T2M	5,219	1	0	2	116	5,605	1	0	2	125	5,640	1	0	2	125	3,141	1	0	1	70		
	T3S	5,213	1	0	1	116	5,598	1	0	1	124	5,633	1	0	1	125	3,165	1	0	1	70		
	T3M	5,260	1	0	2	117	5,649	1	0	2	126	5,684	1	0	2	126	3,196	1	0	1	71		
	T4M	5,332	1	0	2	118	5,725	1	0	2	127	5,761	1	0	2	128	3,179	1	0	1	71		
	TFTM	5,252	1	0	2	117	5,640	1	0	2	125	5,675	1	0	2	126	3,143	1	0	1	70		
	TSVS	5,548	2	0	0	123	5,958	2	0	0	132	5,995	2	0	0	133	3,278	2	0	0	73		
	TSS	5,589	2	0	0	124	6,002	2	0	0	133	6,039	2	0	0	134	3,328	2	0	0	74		
	TSM	5,599	3	0	1	124	6,012	3	0	1	134	6,050	3	0	1	134	3,288	2	0	1	73		
	TSW	5,517	3	0	1	123	5,924	3	0	1	132	5,961	3	0	2	132	3,295	2	0	1	73		
	BLC	3,909	1	0	1	87	4,198	1	0	1	93	4,224	1	0	1	94							
	LCCO	3,798	1	0	1	84	4,078	1	0	1	91	4,104	1	0	1	91							
	RCCO	3,798	1	0	1	84	4,078	1	0	1	91	4,104	1	0	1	91							
	T1S	7,085	2	0	2	98	7,608	2	0	2	106	7,656	2	0	2	106							
	T2S	7,305	2	0	2	101	7,845	2	0	2	109	7,894	2	0	2	110							
	T2M	7,138	2	0	2	99	7,665	2	0	2	106	7,713	2	0	2	107							
	T3S	7,129	1	0	2	99	7,656	2	0	2	106	7,704	2	0	2	107							
	T3M	7,194	2	0	2	100	7,725	2	0	2	107	7,773	2	0	2	108							
	T4M	7,292	2	0	2	101	7,830	2	0	2	109	7,879	2	0	2	109							
	TFTM	7,183	1	0	2	100	7,713	2	0	2	107	7,761	2	0	2	108							
	TSVS	7,588	3	0	0	105	8,148	3	0	0	113	8,199	3	0	0	114							
TSS	7,644	3	0	0	106	8,208	3	0	0	114	8,259	3	0	0	115								
TSM	7,657	3	0	2	106	8,222	3	0	2	114	8,274	3	0	2	115								
TSW	7,545	3	0	2	105	8,102	3	0	2	113	8,153	3	0	2	113								
BLC	5,162	1	0	1	72	5,543	1	0	1	77	5,578	1	0	1	77								
LCCO	5,015	1	0	2	70	5,386	1	0	2	75	5,419	1	0	2	75								
RCCO	5,015	1	0	2	70	5,386	1	0	2	75	5,419	1	0	2	75								

Lumen Output

Lumen values are from photometric tests performed in accordance with IESNA LM-79-08. Data is considered to be representative of the configurations shown, within the tolerances allowed by Lighting Facts. Contact factory for performance data on any configurations not shown here.

Forward Optics																								
LEDs	Drive Current (mA)	System Watts	Dist. Type	30K (3000 K, 70 CRI)				40K (4000 K, 70 CRI)				50K (5000 K, 70 CRI)				AMBPC (Amber Phosphor Converted)								
				Lumens	B	U	G	LPW	Lumens	B	U	G	LPW	Lumens	B	U	G	LPW	Lumens	B	U	G	LPW	
40C (40 LEDs)	530 mA	68 W	T1S	7,926	2	0	2	117	8,511	2	0	2	125	8,564	2	0	2	126	4,878	1	0	1	72	
			T2S	8,172	2	0	2	120	8,775	2	0	2	129	8,830	2	0	2	130	4,969	1	0	1	73	
			T2M	7,985	2	0	2	117	8,574	2	0	2	126	8,628	2	0	2	127	4,874	1	0	1	72	
			T3S	7,975	2	0	2	117	8,564	2	0	2	126	8,617	2	0	2	127	4,910	1	0	1	72	
			T3M	8,047	2	0	2	118	8,642	2	0	3	127	8,696	2	0	3	128	4,958	1	0	2	73	
			T4M	8,157	2	0	2	120	8,759	2	0	2	129	8,813	2	0	2	130	4,932	1	0	2	73	
			TFTM	8,035	2	0	2	118	8,628	2	0	2	127	8,682	2	0	2	128	4,876	1	0	2	72	
			TSVS	8,488	3	0	0	125	9,115	3	0	1	134	9,172	3	0	1	135	5,086	2	0	0	75	
			TSS	8,550	3	0	1	126	9,182	4	0	2	135	9,239	3	0	1	136	5,163	2	0	0	76	
			TSM	8,565	3	0	2	126	9,198	3	0	2	135	9,255	3	0	2	136	5,102	3	0	1	75	
			TSW	8,440	4	0	2	124	9,063	3	0	2	133	9,120	4	0	2	134	5,112	3	0	1	75	
			BLC	6,142	1	0	2	90	6,595	1	0	2	97	6,636	1	0	2	98						
	LCCO	5,967	1	0	2	88	6,407	1	0	2	94	6,447	1	0	2	95								
	RCCO	5,967	1	0	2	88	6,407	1	0	2	94	6,447	1	0	2	95								
		700 mA	91 W	T1S	10,066	2	0	2	111	10,810	2	0	2	119	10,877	2	0	2	120	6,206	2	0	2	68
	T2S			10,379	2	0	2	114	11,145	2	0	2	122	11,215	2	0	2	123	6,322	2	0	2	69	
	T2M			10,141	2	0	2	111	10,890	2	0	2	120	10,958	2	0	2	120	6,201	2	0	2	68	
	T3S			10,129	2	0	2	111	10,877	2	0	2	120	10,945	2	0	2	120	6,247	1	0	2	69	
	T3M			10,221	2	0	3	112	10,975	2	0	3	121	11,044	2	0	3	121	6,308	2	0	2	69	
	T4M			10,359	2	0	3	114	11,124	2	0	3	122	11,194	2	0	3	123	6,275	1	0	2	69	
	TFTM			10,205	2	0	2	112	10,958	2	0	2	120	11,027	2	0	2	121	6,203	1	0	2	68	
	TSVS			10,781	3	0	1	118	11,576	3	0	1	127	11,649	3	0	1	128	6,671	2	0	0	73	
	TSS			10,860	3	0	1	119	11,662	3	0	1	128	11,734	3	0	1	129	6,569	2	0	0	72	
	TSM			10,879	4	0	2	120	11,682	4	0	2	128	11,755	4	0	2	129	6,491	3	0	1	71	
	TSW			10,719	4	0	2	118	11,511	4	0	2	126	11,583	4	0	2	127	6,504	3	0	2	71	
	BLC			7,819	1	0	2	86	8,396	1	0	2	92	8,448	1	0	2	93						
	LCCO	7,596	1	0	2	83	8,157	1	0	2	90	8,208	1	0	2	90								
	RCCO	7,596	1	0	2	83	8,157	1	0	2	90	8,208	1	0	2	90								
		1000 mA	138 W	T1S	13,767	3	0	3	100	14,783	3	0	3	107	14,876	3	0	3	108					
	T2S			14,194	3	0	3	103	15,242	3	0	3	110	15,338	3	0	3	111						
	T2M			13,869	3	0	3	101	14,893	3	0	3	108	14,986	3	0	3	109						
	T3S			13,852	2	0	2	100	14,875	3	0	3	108	14,968	3	0	3	108						
	T3M			13,978	3	0	3	101	15,028	3	0	3	109	15,104	3	0	3	109						
	T4M			14,168	3	0	3	103	15,214	3	0	3	110	15,309	3	0	3	111						
	TFTM			13,956	2	0	3	101	14,987	2	0	3	109	15,080	2	0	3	109						
	TSVS			14,744	4	0	1	107	15,832	4	0	1	115	15,931	4	0	1	115						
TSS	14,852			4	0	1	108	15,948	4	0	1	116	16,048	4	0	1	116							
TSM	14,878			4	0	2	108	15,976	4	0	2	116	16,076	4	0	2	116							
TSW	14,660			4	0	2	106	15,742	4	0	2	114	15,840	4	0	2	115							
BLC	10,325			1	0	2	75	11,087	1	0	2	80	11,156	1	0	2	81							
LCCO	10,031	2	0	2	73	10,771	2	0	3	78	10,839	2	0	3	79									
RCCO	10,031	2	0	2	73	10,771	2	0	3	78	10,839	2	0	3	79									

L90 and R90 Rotated Optics																							
LEDs	Drive Current (mA)	System Watts	Dist. Type	30K (3000 K, 70 CRI)					40K (4000 K, 70 CRI)					50K (5000 K, 70 CRI)					AMBPC (Amber Phosphor Converted)				
				Lumens	B	U	G	LPW	Lumens	B	U	G	LPW	Lumens	B	U	G	LPW	Lumens	B	U	G	LPW
30C (30 LEDs)	530 mA	52 W	T1S	6,130	2	0	2	118	6,583	2	0	2	127	6,624	2	0	2	127	3,841	2	0	2	74
			T2S	6,321	2	0	2	122	6,787	2	0	2	131	6,830	2	0	2	131	3,912	2	0	2	75
			T2M	6,176	3	0	3	119	6,632	3	0	3	128	6,673	3	0	3	128	3,837	2	0	2	74
			T3S	6,168	3	0	3	119	6,624	3	0	3	127	6,665	3	0	3	128	3,866	2	0	2	74
			T3M	6,224	3	0	3	120	6,684	3	0	3	129	6,726	3	0	3	129	3,904	2	0	2	75
			T4M	6,309	3	0	3	121	6,775	3	0	3	130	6,817	3	0	3	131	3,884	2	0	2	75
			TFTM	6,215	3	0	3	120	6,673	3	0	3	128	6,715	3	0	3	129	3,839	2	0	2	74
			T5VS	6,565	2	0	0	126	7,050	3	0	0	136	7,094	3	0	0	136	4,005	2	0	0	77
			T5S	6,613	2	0	0	127	7,102	2	0	0	137	7,146	2	0	0	137	4,065	2	0	0	78
			T5M	6,625	3	0	1	127	7,114	3	0	1	137	7,159	3	0	1	138	4,017	2	0	1	77
			T5W	6,528	3	0	2	126	7,010	3	0	2	135	7,054	3	0	2	136	4,025	3	0	1	77
			BLC	4,747	2	0	2	91	5,098	2	0	2	98	5,130	2	0	2	99					
			LCCO	4,612	1	0	2	89	4,953	1	0	2	95	4,984	1	0	2	96					
			RCCO	4,612	1	0	2	89	4,953	1	0	2	95	4,984	1	0	2	96					
			T1S	7,786	3	0	3	111	8,361	3	0	3	119	8,413	3	0	3	120	4,783	2	0	2	68
			T2S	8,028	3	0	3	115	8,620	3	0	3	123	8,674	3	0	3	124	4,873	2	0	2	70
			T2M	7,844	3	0	3	112	8,423	3	0	3	120	8,476	3	0	3	121	4,779	2	0	2	68
			T3S	7,834	3	0	3	112	8,413	3	0	3	120	8,465	3	0	3	121	4,815	2	0	2	69
	T3M	7,905	3	0	3	113	8,489	3	0	3	121	8,542	3	0	3	122	4,862	3	0	3	69		
	T4M	8,013	3	0	3	114	8,604	3	0	3	123	8,658	3	0	3	124	4,837	3	0	3	69		
	TFTM	7,893	3	0	3	113	8,476	3	0	3	121	8,529	3	0	3	122	4,781	3	0	3	68		
	T5VS	8,338	3	0	0	119	8,954	3	0	0	128	9,010	3	0	0	129	4,988	2	0	0	71		
	T5S	8,400	3	0	0	120	9,020	3	0	1	129	9,076	3	0	1	130	5,063	2	0	0	72		
	T5M	8,414	3	0	2	120	9,036	3	0	2	129	9,092	3	0	2	130	5,003	3	0	1	71		
	T5W	8,291	4	0	2	118	8,903	4	0	2	127	8,959	4	0	2	128	5,013	3	0	1	72		
	BLC	6,044	2	0	2	86	6,490	3	0	3	93	6,530	3	0	3	93							
	LCCO	5,872	1	0	2	84	6,305	1	0	2	90	6,345	1	0	2	91							
	RCCO	5,872	1	0	2	84	6,305	1	0	2	90	6,345	1	0	2	91							
	T1S	10,648	3	0	3	102	11,434	3	0	3	110	11,506	3	0	3	111							
	T2S	10,979	3	0	3	106	11,789	3	0	3	113	11,863	3	0	3	114							
	T2M	10,727	3	0	3	103	11,519	3	0	3	111	11,591	3	0	3	111							
	T3S	10,714	3	0	3	103	11,505	3	0	3	111	11,577	3	0	3	111							
	T3M	10,812	3	0	3	104	11,610	4	0	4	112	11,682	4	0	4	112							
	T4M	10,958	4	0	4	105	11,767	4	0	4	113	11,841	4	0	4	114							
	TFTM	10,795	3	0	3	104	11,592	4	0	4	111	11,664	4	0	4	112							
	T5VS	11,404	3	0	0	110	12,245	3	0	1	118	12,322	3	0	1	118							
	T5S	11,487	3	0	1	110	12,336	3	0	1	119	12,413	3	0	1	119							
	T5M	11,508	4	0	2	111	12,357	4	0	2	119	12,434	4	0	2	120							
	T5W	11,339	4	0	2	109	12,176	4	0	2	117	12,252	4	0	2	118							
	BLC	7,981	3	0	3	77	8,570	3	0	3	82	8,624	3	0	3	83							
	LCCO	7,754	1	0	2	75	8,326	2	0	2	80	8,378	2	0	2	81							
	RCCO	7,754	1	0	2	75	8,326	2	0	2	80	8,378	2	0	2	81							

FEATURES & SPECIFICATIONS

INTENDED USE

The sleek design of the D-Series Size 0 reflects the embedded high performance LED technology. It is ideal for many commercial and municipal applications, such as parking lots, plazas, campuses, and pedestrian areas.

CONSTRUCTION

Single-piece die-cast aluminum housing has integral heat sink fins to optimize thermal management through conductive and convective cooling. Modular design allows for ease of maintenance and future light engine upgrades. The LED driver is mounted in direct contact with the casting to promote low operating temperature and long life. Housing is completely sealed against moisture and environmental contaminants (IP65). Low EPA (0.95 ft²) for optimized pole wind loading.

FINISH

Exterior parts are protected by a zinc-infused Super Durable TGIC thermoset powder coat finish that provides superior resistance to corrosion and weathering. A tightly controlled multi-stage process ensures a minimum 3 mils thickness for a finish that can withstand extreme climate changes without cracking or peeling. Available in both textured and non-textured finishes.

OPTICS

Precision-molded proprietary acrylic lenses are engineered for superior area lighting distribution, uniformity, and pole spacing. Light engines are available in 3000 K, 4000 K or 5000 K (70 CRI) or optional 3000 K (70 minimum CRI) or 5000 K (70 CRI) configurations. The D-Series Size 0 has zero uplight and qualifies as a Nighttime Friendly™ product, meaning it is consistent with the LEED® and Green Globes™ criteria for eliminating wasteful uplight.

ELECTRICAL

Light engine(s) configurations consist of 20, 30 or 40 high-efficacy LEDs mounted to metal-core circuit boards to maximize heat dissipation and promote long life (up to L99/100,000 hours at 25°C). Class 1 electronic drivers are designed to have a power factor >90%, THD <20%, and an

expected life of 100,000 hours with <1% failure rate. Easily serviceable 10kV or 6kV surge protection device meets a minimum Category C Low operation (per ANSI/IEEE C62.41.2).

INSTALLATION

Included mounting block and integral arm facilitate quick and easy installation. Stainless steel bolts fasten the mounting block securely to poles and walls, enabling the D-Series Size 0 to withstand up to a 3.0 G vibration load rating per ANSI C136.31. The D-Series Size 0 utilizes the AERIS™ series pole drilling pattern (template #8). Optional terminal block and NEMA photocontrol receptacle are also available.

LISTINGS

UL Listed for wet locations. Light engines are IP66 rated; luminaire is IP65 rated. Rated for -40°C minimum ambient. U.S. Patent No. D672,492 S. International patent pending.

DesignLights Consortium® (DLC) qualified product. Not all versions of this product may be DLC qualified. Please check the DLC Qualified Products List at www.designlights.org to confirm which versions are qualified.

International Dark-Sky Association (IDA) Fixture Seal of Approval (FSA) is available for all products on this page utilizing 3000K color temperature only.

WARRANTY

5-year limited warranty. Complete warranty terms located at: www.acuitybrands.com/CustomResources/Terms_and_conditions.aspx

Note: Actual performance may differ as a result of end-user environment and application. All values are design or typical values, measured under laboratory conditions at 25 °C. Specifications subject to change without notice.



FEATURES & SPECIFICATIONS

INTENDED USE — Square Straight Steel is a general purpose light pole for up to 39-foot mounting heights. This pole provides a robust yet cost effective option for mounting area lights and floodlights.

CONSTRUCTION — **Pole Shaft:** The pole shaft is of uniform dimension and wall thickness and is made of a weldable-grade, hot-rolled, commercial-quality steel tubing with a minimum yield of 55 KSI (11-gauge, .1196"), or 50 KSI (7-gauge, .1793"). Shaft is one-piece with a full-length longitudinal high-frequency electric resistance weld. Uniformly square in cross-section with flat sides, small corner radii and excellent torsional qualities. Available shaft widths are 4", 5" and 6".

Pole Top: A top cap is provided for all poles that will receive drilling patterns for side-mount luminaire arm assemblies or when ordered with PT option.

Handhole: A reinforced handhole with grounding provision is provided at 18" from the base. Positioning the handhole lower may not be possible and requires engineering review; consult Tech Support-Outdoor for further information. Every handhole includes a cover and cover attachment hardware. The handhole has a nominal dimension of 2.5" x 5".

Base Cover: A durable ABS plastic two-piece full base cover, finished to match the pole, is provided with each pole assembly. Additional base cover options are available upon request.

Anchor Base/ Bolts: Anchor base is fabricated from steel that meets ASTM A36 standards and can be altered to match existing foundations; consult factory for modifications. Anchor bolts are manufactured to ASTM F1554 Standards grade 55, (55 KSI minimum yield strength and tensile strength of 75-95 KSI). Top threaded portion (nominal 12") is hot-dipped galvanized per ASTM A-153.

HARDWARE — All structural fasteners are high-strength galvanized carbon steel. All non-structural fasteners are galvanized or zinc-plated carbon steel or stainless steel.

FINISH — Standard powder-coat finishes include Dark Bronze, White, Black, Medium Bronze and Natural Aluminum colors. Classic finishes include Sandstone, Charcoal Gray, Tennis Green, Bright Red and Steel Blue colors. Architectural Colors and Special Finishes are available by quote and include, but are not limited to Hot-dipped Galvanized, Paint over Hot-dipped Galvanized, RAL Colors, Custom Colors and Extended Warranty Finishes. Factory-applied primer paint finish is available for customer field-paint applications.

WARRANTY — 1-year limited warranty. Complete warranty terms located at: www.acuitybrands.com/CustomerResources/Terms_and_conditions.aspx

NOTE: Actual performance may differ as a result of end-user environment and application. Specifications subject to change without notice.

Catalog Number
Notes
Type



Anchor Base Poles

SSS

SQUARE STRAIGHT STEEL

ORDERING INFORMATION

Lead times will vary depending on options selected. Consult with your sales representative.

Example: SSS 20 5C DM19 DDB

Series	Nominal fixture mounting height	Nominal shaft base size/wall thickness ¹	Mounting ²	Options	Finish ¹⁰	
SSS	(See technical information table for complete ordering information.)	(See technical information table for complete ordering information.)	Tenon mounting	AERIS™ Suspend drill mounting ^{3,4}	Shipped installed	Standard colors
	10'-39' (for 1/2 ft increments, add -6 to the pole height. Ex: 20-6 equals 20ft 6in.)	4C 4" 11g (.1196") 4G 4" 7g (.1793") 5C 5" 11g (.1196") 5G 5" 7g (.1793") 6G 6" 7g (.1793")	PT Open top (includes top cap) T20 2-3/8" O.D. (2" NPS) T25 2-7/8" O.D. (2-1/2" NPS) T30 3-1/2" O.D. (3" NPS) T35 4" O.D. (3-1/2" NPS)	DM19AST_ 1 at 90° DM28AST_ 2 at 180° DM29AST_ 2 at 90° DM39AST_ 3 at 90° DM49AST_ 4 at 90°	L/AB Less anchor bolts VD Vibration damper TP Tamper resistant handhole cover fasteners HAxy Horizontal arm bracket (1 fixture) ^{5,6} FDLxy Festoon outlet less electrical ⁵ CPL12/xy 1/2" coupling ⁵ CPL34/xy 3/4" coupling ⁵ CPL1/xy 1" coupling ⁵ NPL12/xy 1/2" threaded nipple ⁵ NPL34/xy 3/4" threaded nipple ⁵ NPL1/xy 1" threaded nipple ⁵ EHHxy Extra handhole ^{5,7} MAEX Match existing ⁸ USPOM United States point of manufacture ⁹ IC Interior coating ¹⁰ UL UL listed with label (Includes NEC compliant cover) NEC NEC 410.30 compliant gasketed handhole (Not UL Labeled)	DBB Dark bronze DWH White DBL Black DMB Medium bronze DNA Natural aluminum Classic colors DSS Sandstone DGC Charcoal gray DTG Tennis green DBR Bright red DSB Steel blue Architectural Colors and Special Finishes ¹¹ Galvanized, Paint over Galvanized, RAL Colors, Custom Colors and Extended Warranty Finishes available.
			KAC/KAD/KSE/KSF/KVR/KVF Drill mounting ³ DM19 1 at 90° DM28 2 at 180° DM28 PL 2 at 180° with one side plugged DM29 2 at 90° DM39 3 at 90° DM49 4 at 90°	DM19MRT_ 1 at 90° DM28MRT_ 2 at 180° DM29MRT_ 2 at 90° DM39MRT_ 3 at 90° DM49MRT_ 4 at 90°		
			CSX/DSX/AERIS™/OMERO™/HLA/KAX Drill mounting ³ DM19AS 1 at 90° DM28AS 2 at 180° DM29AS 2 at 90° DM39AS 3 at 90° DM49AS 4 at 90°			

See footnotes next page.

SSS Square Straight Steel Poles

NOTES:

- Wall thickness will be signified with a "C" (11 Gauge) or a "G" (7-gauge) in nomenclature. "C" - 0.1196" | "G" - 0.1793".
- PT open top poles include top cap. When ordering tenon mounting and drill mounting for the same pole, follow this example: DM28/T20. The combination includes a required extra handhole.
- The drilling template pattern to be used for a particular luminaire depends on the luminaire that is used. Refer to the Technical Data Section of the Outdoor Binder for Drilling Templates.
Matrix with Generic Template Link at <http://www.acuitybrands.com/-/media/Files/Acuity/Resources/Tools-and-Documents/Pole%20Resources/Pole%20Anchorage/Matrix%20Document/AnchorBoltMatrix.pdf?la=en>
- Insert "1" or "2" to designate fixture size; e.g. DM19AST2.
- Specify location and orientation when ordering option.
For "x": Specify the height above the base of pole in feet or feet and inches; separate feet and inches with a "-".
Example: 5ft = 5 and 20ft 3in = 20-3
For "y": Specify orientation from handhole (A,B,C,D)
Refer to the Handhole Orientation diagram below.
Example: 1/2" coupling at 5' 8", orientation C = CPL12/S-8C
- Horizontal arm is 18" x 2-3/8" O.D. tenon standard, with radius curve providing 12" rise and 2-3/8" O.D..
- Combination of tenon-top and drill mount includes extra handhole.
- Must add original order number of existing pole(s).
- Use when mill certifications are required.
- Provides enhanced corrosion resistance.
- Additional colors available; see www.lithonia.com/archcolors or Architectural Colors brochure (Form No. 794.3). Available by formal quote only, consult factory for details.

TECHNICAL INFORMATION — EPA (ft²) WITH 3-SECOND GUST PER AASHTO 2013

Series	Mounting Height (ft)*	Shaft Base Size	90 MPH	Max. weight	100 MPH	Max. weight	110 MPH	Max. weight	120 MPH	Max. weight	130 MPH	Max. weight	140 MPH	Max. weight	150 MPH	Max. weight	Approximate ship weight (lbs.)
SSS	10	4C	20	500	16	400	13	325	10.5	263	8.5	213	7	175	6	150	75
SSS	12	4C	16	400	13	325	10	250	8	200	6.5	163	5	125	4	100	90
SSS	14	4C	13.5	338	10	250	7.5	188	6	150	4.5	113	3.5	88	2.5	63	100
SSS	16	4C	10.5	263	7.5	188	5.5	138	4	100	3	75	1.5	38	1	25	115
SSS	18	4C	8	200	5.5	138	4	100	2.5	63	1.5	38	0.5	13	-	-	125
SSS	18	4G	13	325	9.5	238	7	175	5	125	3.5	88	2.5	63	1.5	38	185
SSS	18	5C	13	325	9.5	238	6.5	163	4.5	113	3	75	1.5	38	3.5	13	170
SSS	20	4C	6	150	4	100	2.5	63	1	25	-	-	-	-	-	-	140
SSS	20	4G	10.5	263	7.5	188	5.5	138	3.5	88	2	50	1	25	-	-	205
SSS	20	5C	10	250	7	175	4.5	113	2.5	63	1	25	-	-	-	-	185
SSS	20	5G	20	500	15	375	11.5	288	8.5	213	6	150	4.5	113	3	75	265
SSS	25	4C	2	50	0.5	13	-	-	-	-	-	-	-	-	-	-	170
SSS	25	4G	5.5	138	3	75	1.5	38	-	-	-	-	-	-	-	-	245
SSS	25	5C	4.5	113	2	50	-	-	-	-	-	-	-	-	-	-	225
SSS	25	5G	12	300	8.5	213	5.5	138	3	75	1.5	38	-	-	-	-	360
SSS	25	6G	19	475	13.5	338	9	225	5.5	138	3	75	1	25	-	-	445
SSS	30	4G	1.5	38	-	-	-	-	-	-	-	-	-	-	-	-	291
SSS	30	5C	-	-	-	-	-	-	-	-	-	-	-	-	-	-	265
SSS	30	5G	6.5	163	3.5	88	1	25	-	-	-	-	-	-	-	-	380
SSS	30	6G	11	275	6	150	2.5	63	-	-	-	-	-	-	-	-	520
SSS	35	5G	2	50	-	-	-	-	-	-	-	-	-	-	-	-	440
SSS	35	6G	4	100	-	-	-	-	-	-	-	-	-	-	-	-	540
SSS	39	6G	-	-	-	-	-	-	-	-	-	-	-	-	-	-	605

AASHTO 2013 criteria is the most conservative existing EPA calculation. For poles not showing EPA values under AASHTO 2013, EPA values may exist under commercial criteria (see table below).

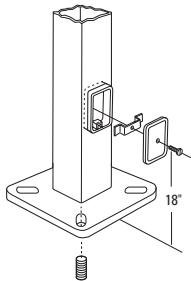
*For 1/2 ft increments, add -6 to the pole height. Ex: 20-6 equals 20ft 6in.

SSS Square Straight Steel Poles

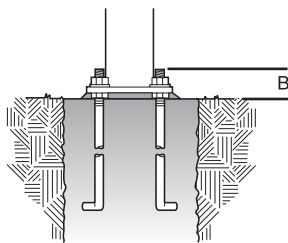
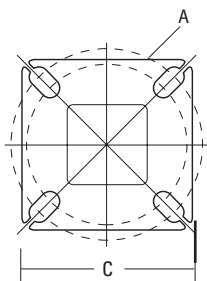
TECHNICAL INFORMATION													
Catalog Number	Nominal Shaft Length (ft.)*	Pole Shaft Size (Base in. x Top in. x ft.)	Wall thick (in)	Gauge	EPA (ft ²) with 1.3 gust						Bolt circle (in)	Bolt size (in. x in. x in.)	Approximate ship weight (lbs.)
					80 MPH	Max. weight	90 MPH	Max. weight	100 MPH	Max. weight			
SSS 10 4C	10	4.0 x 10.0	0.1196	11	30.6	765	23.8	595	18.9	473	8-9	3/4 x 18 x 3	75
SSS 12 4C	12	4.0 x 12.0	0.1196	11	24.4	610	18.8	470	14.8	370	8-9	3/4 x 18 x 3	90
SSS 14 4C	14	4.0 x 14.0	0.1196	11	19.9	498	15.1	378	11.7	293	8-9	3/4 x 18 x 3	100
SSS 16 4C	16	4.0 x 16.0	0.1196	11	15.9	398	11.8	295	8.9	223	8-9	3/4 x 18 x 3	115
SSS 18 4C	18	4.0 x 18.0	0.1196	11	12.6	315	9.2	230	6.7	168	8-9	3/4 x 18 x 3	125
SSS 20 4C	20	4.0 x 20.0	0.1196	11	9.6	240	6.7	167	4.5	150	8-9	3/4 x 18 x 3	140
SSS 20 4G	20	4.0 x 20.0	0.1793	7	14	350	11	275	8	200	8-9	3/4 x 30 x 3	198
SSS 20 5C	20	5.0 x 20.0	0.1196	11	17.7	443	12.7	343	9.4	235	10-12	1 x 36 x 4	185
SSS 20 5G	20	5.0 x 20.0	0.1793	7	28.1	703	21.4	535	16.2	405	10-12	1 x 36 x 4	265
SSS 25 4C	25	4.0 x 25.0	0.1196	11	4.8	150	2.6	100	1	50	8-9	3/4 x 18 x 3	170
SSS 25 4G	25	4.0 x 25.0	0.1793	7	10.8	270	7.7	188	5.4	135	8-9	3/4 x 30 x 3	245
SSS 25 5C	25	5.0 x 25.0	0.1196	11	9.8	245	6.3	157	3.7	150	10-12	1 x 36 x 4	225
SSS 25 5G	25	5.0 x 25.0	0.1793	7	18.5	463	13.3	333	9.5	238	10-12	1 x 36 x 4	360
SSS 30 4G	30	4.0 x 30.0	0.1793	7	6.7	168	4.4	110	2.6	65	8-9	3/4 x 30 x 3	295
SSS 30 5C	30	5.0 x 30.0	0.1196	11	4.7	150	2	50	--	--	10-12	1 x 36 x 4	265
SSS 30 5G	30	5.0 x 30.0	0.1793	7	10.7	267	6.7	167	3.9	100	10-12	1 x 36 x 4	380
SSS 30 6G	30	6.0 x 30.0	0.1793	7	19	475	13.2	330	9	225	11-13	1 x 36 x 4	520
SSS 35 5G	35	5.0 x 35.0	0.1793	7	5.9	150	2.5	100	--	--	10-12	1 x 36 x 4	440
SSS 35 6G	35	6.0 x 35.0	0.1793	7	12.4	310	7.6	190	4.2	105	11-13	1 x 36 x 4	540
SSS 39 6G	39	6.0 x 39.0	0.1793	7	7.2	180	3	75	--	--	11-13	1 x 36 x 4	605

*For 1/2 ft increments, add -6 to the pole height. Ex: 20-6 equals 20ft 6in.

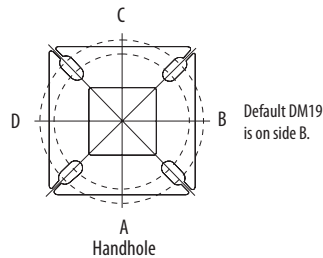
BASE DETAIL



POLE DATA								
Shaft base size	Bolt circle A	Bolt projection B	Base diameter C	Base plate thickness	Template description	Anchor bolt description	Anchor bolt and template number	Anchor bolt description
4"C	8" - 9"	3.25" - 3.75"	8" - 8.25"	0.75"	ABTEMPLATE PJ50004	AB18-0	ABSSS-4C	3/4"x18"x3"
4"G	8" - 9"	3.38" - 3.75"	8" - 8.25"	0.875"	ABTEMPLATE PJ50004	AB30-0	ABSSS-4G	3/4"x30"x3"
5"	10" - 12"	3.5" - 4"	11"	1"	ABTEMPLATE PJ50010	AB36-0	ABSSS-5	1"x36"x4"
6"	11" - 13"	4" - 4.50"	12.5"	1"	ABTEMPLATE PJ50011	AB36-0	N/A	1"x36"x4"

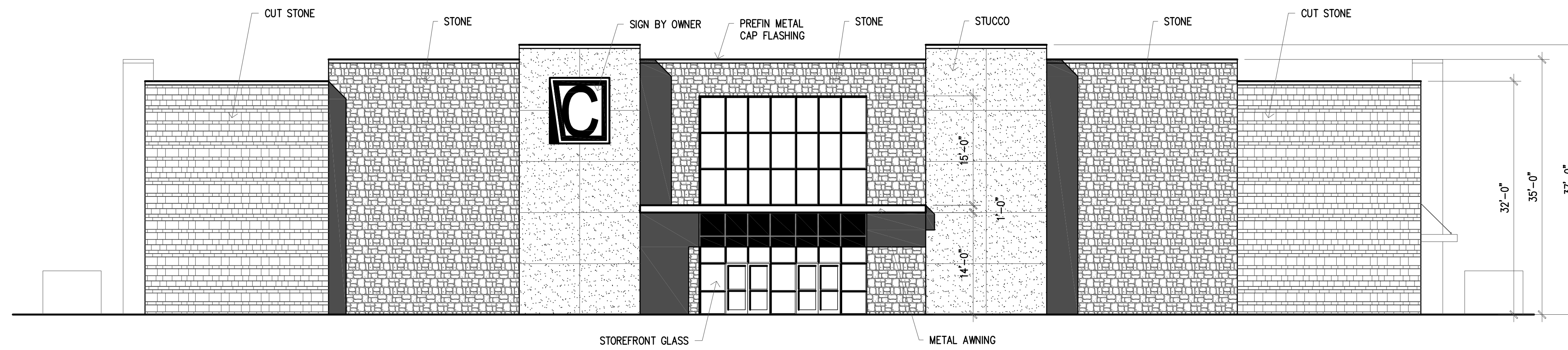


HANDHOLE ORIENTATION

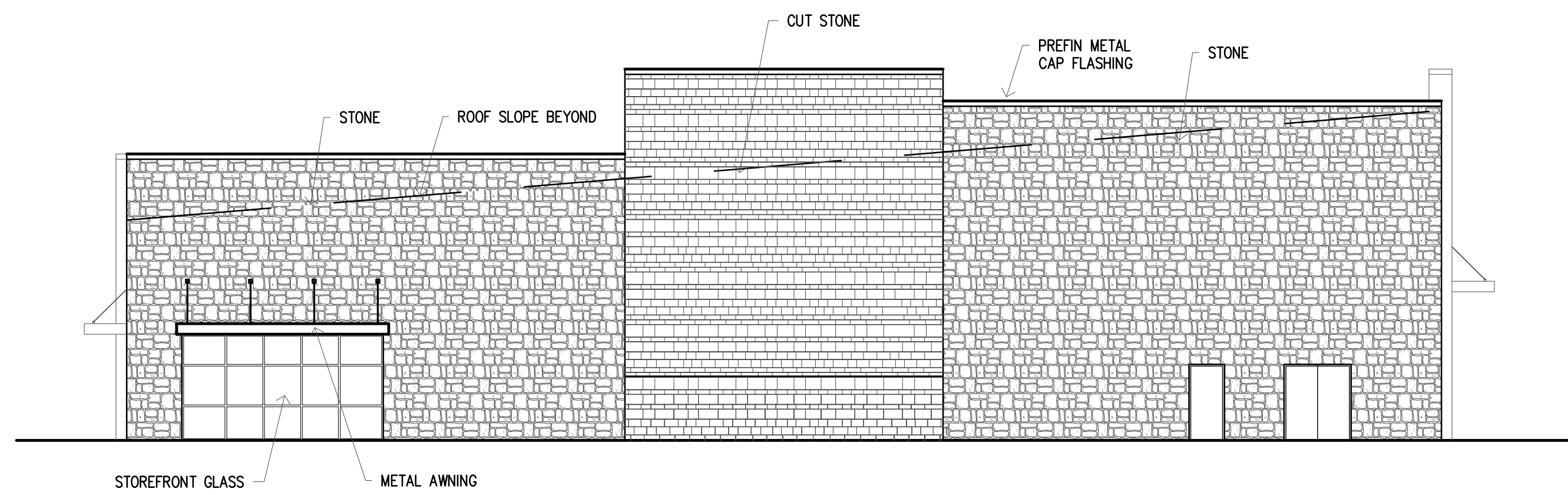


IMPORTANT INSTALLATION NOTES:

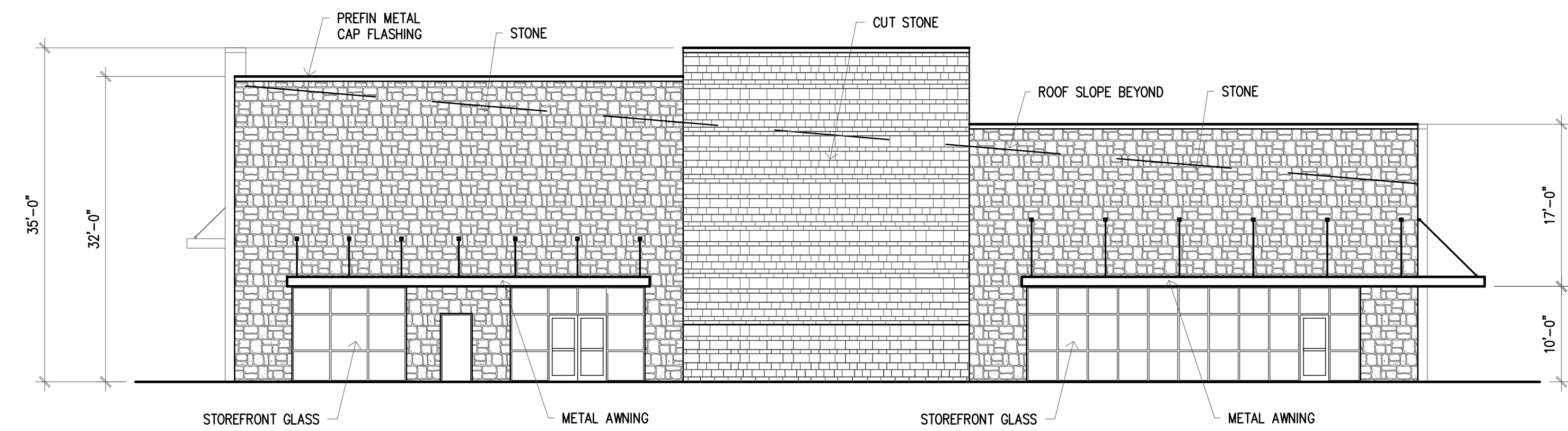
- Do not erect poles without having fixtures installed.
- Factory-supplied templates must be used when setting anchor bolts. Lithonia Lighting will not accept claim for incorrect anchorage placement due to failure to use Lithonia Lighting factory templates.
- If poles are stored outside, all protective wrapping must be removed immediately upon delivery to prevent finish damage.
- Lithonia Lighting is not responsible for the foundation design.



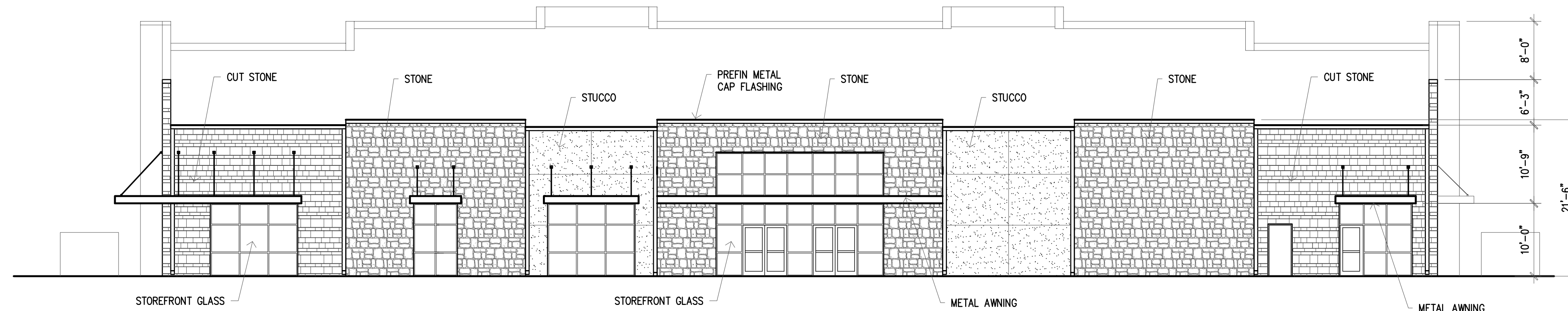
SOUTH ELEVATION (STREET FRONTAGE)
23% STUCCO 77% STONE



WEST ELEVATION
100% STONE



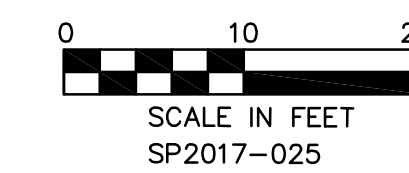
EAST ELEVATION
100% STONE



NORTH ELEVATION
22% STUCCO 78% STONE

**PRICING & CONSTRUCTION
GENERAL NOTES:**

1. THESE DRAWINGS ARE DIAGRAMMATIC IN NATURE AND ARE NOT INTENDED TO INDICATE EACH AND EVERY FITTING, OFFSET, OR OTHER APPURTENANCE NECESSARY TO COMPLETE THE SYSTEM.
2. IT IS THE CONTRACTOR'S RESPONSIBILITY TO REVIEW THE DOCUMENTS AND INCLUDE ALL NECESSARY ITEMS TO PROVIDE A COMPLETE OPERATIONAL SYSTEM.
3. ANY DISCREPANCIES NOTED BY THE CONTRACTOR SHALL BE BROUGHT TO THE ATTENTION OF THE ARCHITECT (IN WRITING) BEFORE BIDDING THIS PROJECT.
4. AFTER BIDS ARE TURNED IN, THE CONTRACTOR SHALL COMPLETE THE SYSTEMS AT NO ADDITIONAL COST.
5. PLUMBING, MECHANICAL, AND ELECTRICAL SUBCONTRACTORS ARE RESPONSIBLE FOR COORDINATING ALL COMPONENTS TO INSURE COMPLETE AND WORKING SYSTEMS. EACH SUBCONTRACTOR SHALL REVIEW ALL DRAWINGS FOR COMPLIANCE.
6. THE ARCHITECT WILL BE RESPONSIBLE TO DETERMINE WHICH TRADE SHALL PROVIDE AND INSTALL ANY COMPONENTS MISSED FOR WORKING SYSTEMS AS NEEDED.



© COPYRIGHT 2017 MERSHAWN ARCHITECTS, INC.
NO PRINTING OR COPING IS ALLOWED
WITHOUT PERMISSION FROM MERSHAWN.

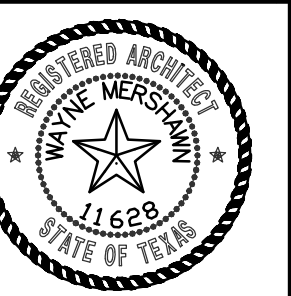
RESIDENTIAL RESTAURANTS
INSTITUTIONAL
ARCHITECTS

MEDICAL COMMERCIAL
CHURCHES
MERSHAWN

2313 RIDGE ROAD #103
ROCKWALL, TEXAS 75087

PHONE: 972-722-9302
FAX: 972-249-2051

No.	Date	Revision	By



CORNERSTONE COMMUNITY CHURCH
ROCKWALL, TEXAS

EXTERIOR ELEVATIONS

Scale: 3/32" = 1'-0"
Date: MM/DD/YY
Project No.: 170201
Designed: GW
Drawn: GW
Checked: MM

SHEET
A4 OF





