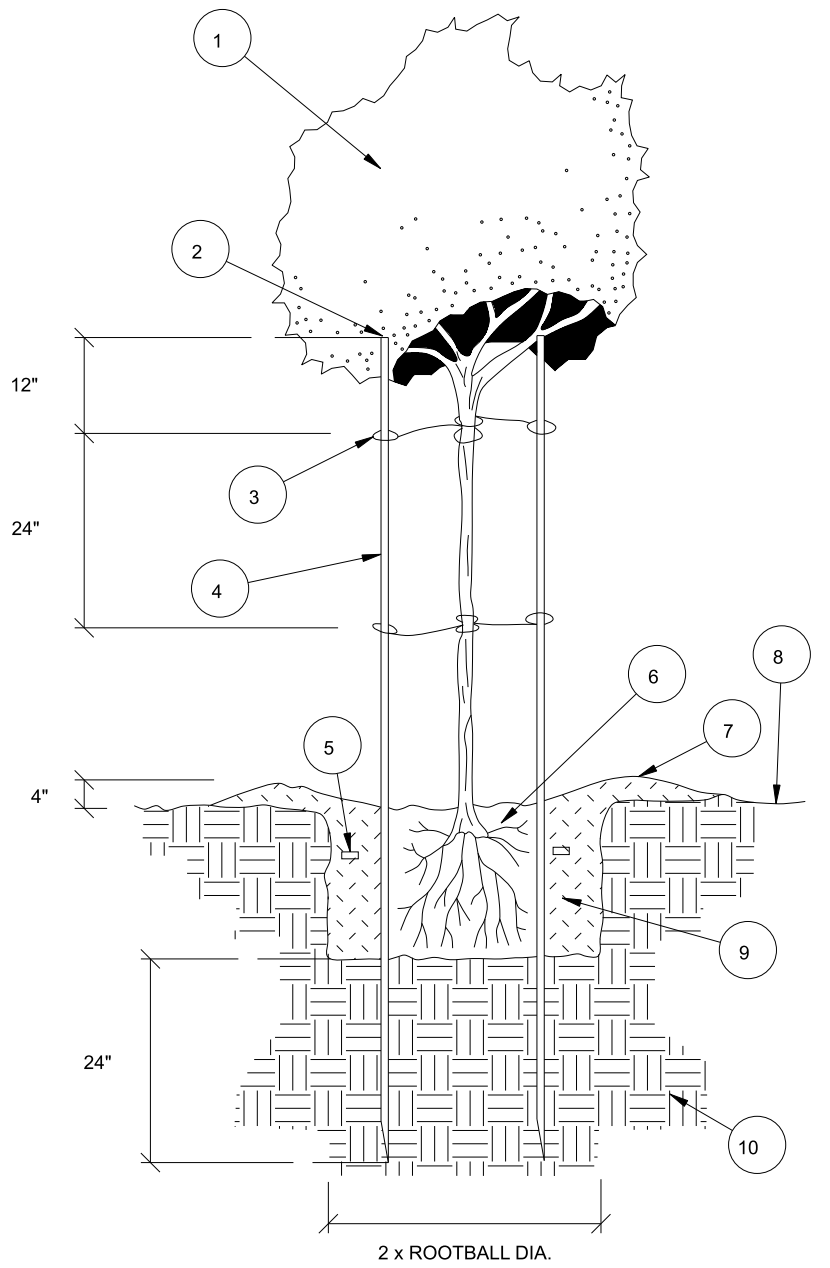
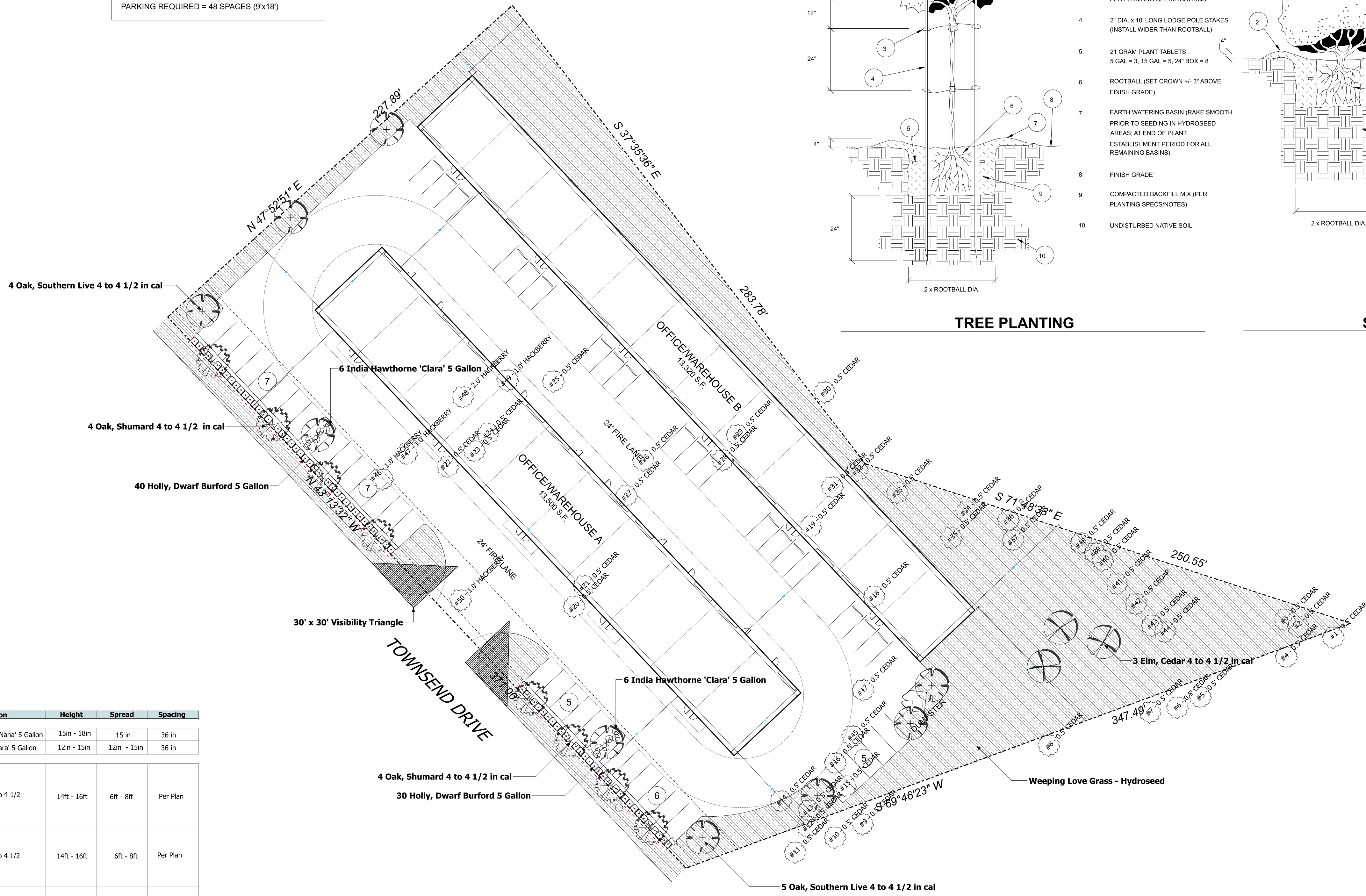
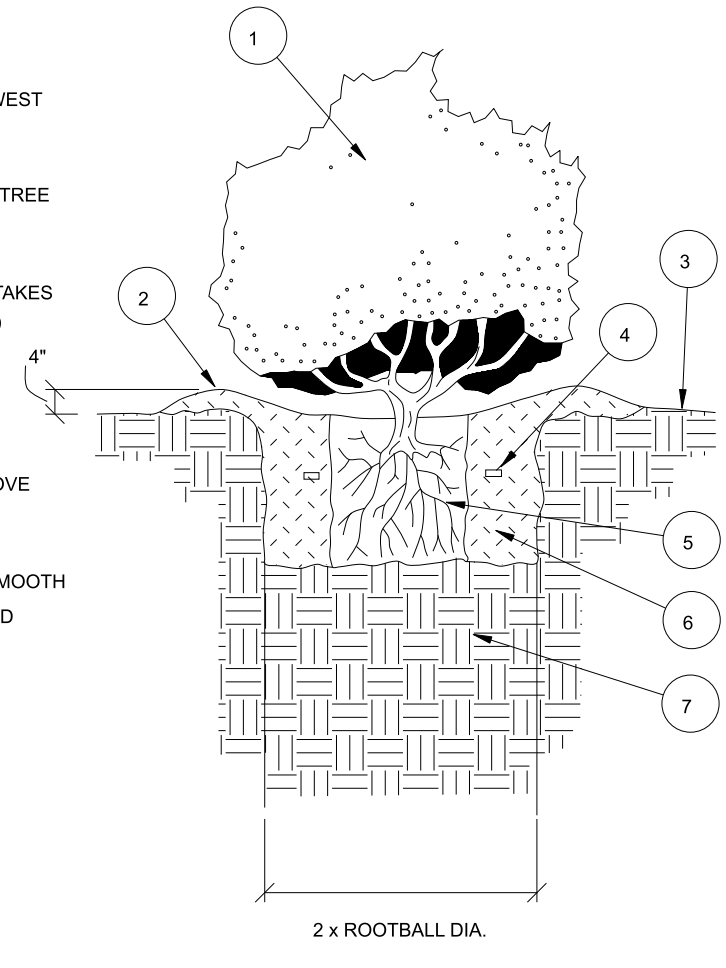


SITE SUMMARY:
 TOTAL LOT AREA = 2.21 ACRES
 OFFICEWAREHOUSE BLDG. A = 13,500 S.F.
 OFFICEWAREHOUSE BLDG. B = 13,320 S.F.
 MAXIMUM BUILDING HEIGHT = 22-FT
 PARKING REQUIRED = 48 SPACES (9'x18')



TREE PLANTING



SHRUB PLANTING

LEGEND

1. TREE PER PLAN
2. TRIM TOP OF STAKES BELOW LOWEST BRANCHES TO PREVENT DAMAGE
3. CROSS TIE BETWEEN STAKE AND TREE PER PLANTING SPECIFICATIONS
4. 2" DIA. x 10' LONG LODGE POLE STAKES (INSTALL WIDER THAN ROOTBALL)
5. 21 GRAM PLANT TABLETS
5 GAL = 3, 15 GAL = 5, 24" BOX = 8
6. ROOTBALL (SET CROWN +/- 3" ABOVE FINISH GRADE)
7. EARTH WATERING BASIN (RAKE SMOOTH PRIOR TO SEEDING IN HYDROSEED AREAS; AT END OF PLANT ESTABLISHMENT PERIOD FOR ALL REMAINING BASINS)
8. FINISH GRADE
9. COMPACTED BACKFILL MIX (PER PLANTING SPECS/NOTES)
10. UNDISTURBED NATIVE SOIL

LEGEND

1. SHRUB OR VINE PER PLAN
2. EARTH WATERING BASIN (RAKE SMOOTH PRIOR TO SEEDING IN HYDROSEED AREAS; AT END OF PLANT ESTABLISHMENT PERIOD FOR ALL REMAINING BASINS)
3. FINISH GRADE
4. 7 GRAM PLANT TABLETS
1 GAL = 3, 5 GAL = 6, 15 GAL = 9
5. ROOTBALL (SET CROWN +/- 3" ABOVE FINISH GRADE)
6. COMPACTED BACKFILL MIX (PER PLANTING SPECS/NOTES)
7. UNDISTURBED NATIVE SOIL

Landscape

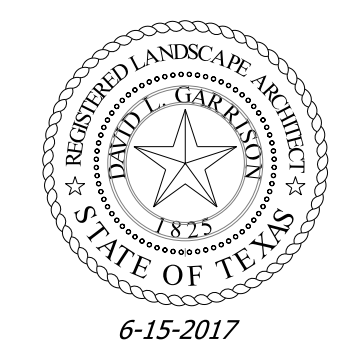
Quantity	Symbol	Description	Height	Spread	Spacing
Shrubs Under 4 Feet					
74		Ilex cornuta 'Burfordii Nana' 5 Gallon	15in - 18in	15 in	36 in
12		Rhampholepis indica 'Clara' 5 Gallon	12in - 15in	12in - 15in	36 in
Trees					
8		Quercus shumardii 4 to 4 1/2	14ft - 16ft	6ft - 8ft	Per Plan
9		Quercus virginiana 4 to 4 1/2	14ft - 16ft	6ft - 8ft	Per Plan
3		Ulmus crassifolia 4 to 4 1/2	14ft - 16ft	4ft - 6ft	Per Plan
Grass					
		Eragrostis curvula - hydroseed at 50 lbs per acre			

LANDSCAPE TABULATIONS	Required	Provided
Landscape Buffer Strip 1 tree per 50 ft. of Street Frontage (371.06 FT)	8 Trees	8 Trees
Parking and Maneuvering Space (40,620 SF) 1 tree per 10 Req. Parking Spaces (48 req. spaces)	5 Trees	9 Trees
Amount of Landscaping Light Industrial	10% (9,627 SF)	43.78% (42,146 SF)
Amount of Tree Replacement for Mitigation Total Caliper Inches	72 Caliper Inches	80 Caliper Inches

Landscape Notes

- All areas to be hydroseeded must be fine graded before seeding.
- All shrub beds and tree wells to be mulched with 4 to 6 inches of shredded hardwood mulch.
- All hydroseeded areas and planting beds to have BIOSOL FORTE 7-2-1 fertilizer applied at manufacturers recommended rate.
- No trees within 5 feet of any utilities.

LANDSCAPE PLAN



6-15-2017
David Garrison



18484 Preston Road
 Suite 137-102
 Dallas, Texas 75252
 214-668-4163

COMPANY:
 PLATINUM CONSTRUCTION COMPANY
 c/o Ron Valk
 1834 South FM 551
 Fate Texas 75189



PROJECT:
 BODIN INDUSTRIAL TRACT
 Townsend Drive
 Lot 6, Block A
 Rockwall, Rockwall County, Texas

REVISIONS:

None
DATE: June 15 2017
JOB NUMBER: 1
DRAWN BY: David Garrison
CHECKED BY: N/A

SCALE:

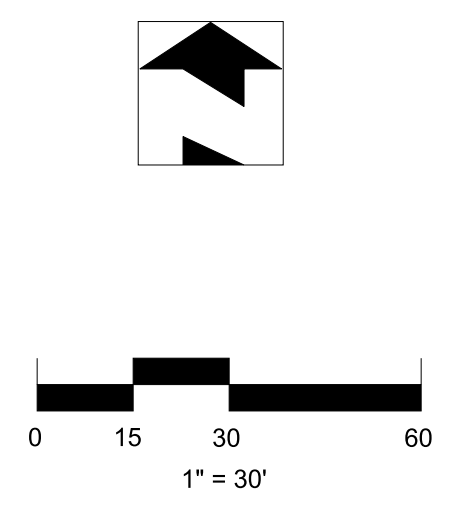
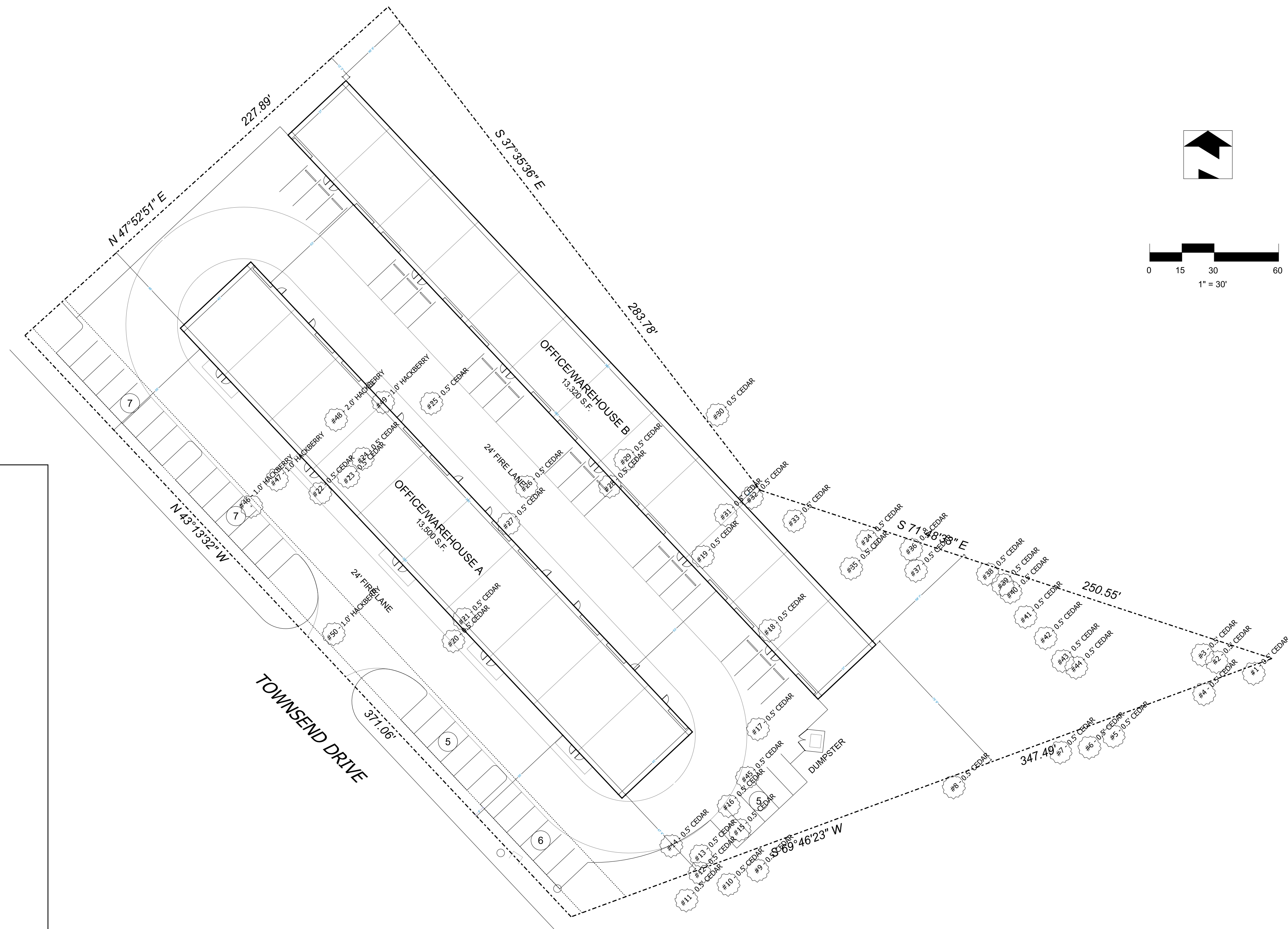
1" = 30'
SHEET:
 1 of 1

TREE INVENTORY

- 1 CEDAR 0.5'
- 2 CEDAR 0.5'
- 3 CEDAR 0.5'
- 4 CEDAR 0.5'
- 5 CEDAR 0.5'
- 6 CEDAR 0.5'
- 7 CEDAR 0.5'
- 8 CEDAR 0.5'
- 9 CEDAR 0.5'
- 10 CEDAR 0.5'
- 11 CEDAR 0.5'
- 12 CEDAR 0.5'
- 13 CEDAR 0.5'
- 14 CEDAR 0.5'
- 15 CEDAR 0.5'
- 16 CEDAR 0.5'
- 17 CEDAR 0.5'
- 18 CEDAR 0.5'
- 19 CEDAR 0.5'
- 20 CEDAR 0.5'
- 21 CEDAR 0.5'
- 22 CEDAR 0.5'
- 23 CEDAR 0.5'
- 24 CEDAR 0.5'
- 25 CEDAR 0.5'
- 26 CEDAR 0.5'
- 27 CEDAR 0.5'
- 28 CEDAR 0.5'
- 29 CEDAR 0.5'
- 30 CEDAR 0.5'
- 31 CEDAR 0.5'
- 32 CEDAR 0.5'
- 33 CEDAR 0.5'
- 34 CEDAR 0.5'
- 35 CEDAR 0.5'
- 36 CEDAR 0.5'
- 37 CEDAR 0.5'
- 38 CEDAR 0.5'
- 39 CEDAR 0.5'
- 40 CEDAR 0.5'
- 41 CEDAR 0.5'
- 42 CEDAR 0.5'
- 43 CEDAR 0.5'
- 44 CEDAR 0.5'
- 45 CEDAR 0.5'
- 46 HACKBERRY 1.0'
- 47 HACKBERRY 1.0'
- 48 HACKBERRY 2.0'
- 49 HACKBERRY 1.0'
- 50 HACKBERRY 1.0'

TOTAL TREES REMOVED - 50
 TOTAL TREES PRESERVED - 0

TOTAL CALIPER INCHES OF PROTECTED TREES - 72 CAL IN.



SITE SUMMARY:
 TOTAL LOT AREA = 2.21 ACRES
 OFFICE/WAREHOUSE BLDG. A = 13,500 S.F.
 OFFICE/WAREHOUSE BLDG. B = 13,320 S.F.
 MAXIMUM BUILDING HEIGHT = 22-FT
 PARKING REQUIRED = 48 SPACES (9'x18')

TREE MITIGATION PLAN



David Garrison



18484 Preston Road
 Suite 137-102
 Dallas, Texas 75252
 214-668-4163

COMPANY:

PLATINUM CONSTRUCTION COMPANY
 c/o Ron Valk
 1834 South FM 551
 Fate Texas 75189



PROJECT:

BODIN INDUSTRIAL TRACT
 Townsend Drive
 Lot 6, Block A
 Rockwall, Rockwall County, Texas

REVISIONS:

None

DATE:

June 15 2017

JOB NUMBER:

1

DRAWN BY:

David Garrison

CHECKED BY:

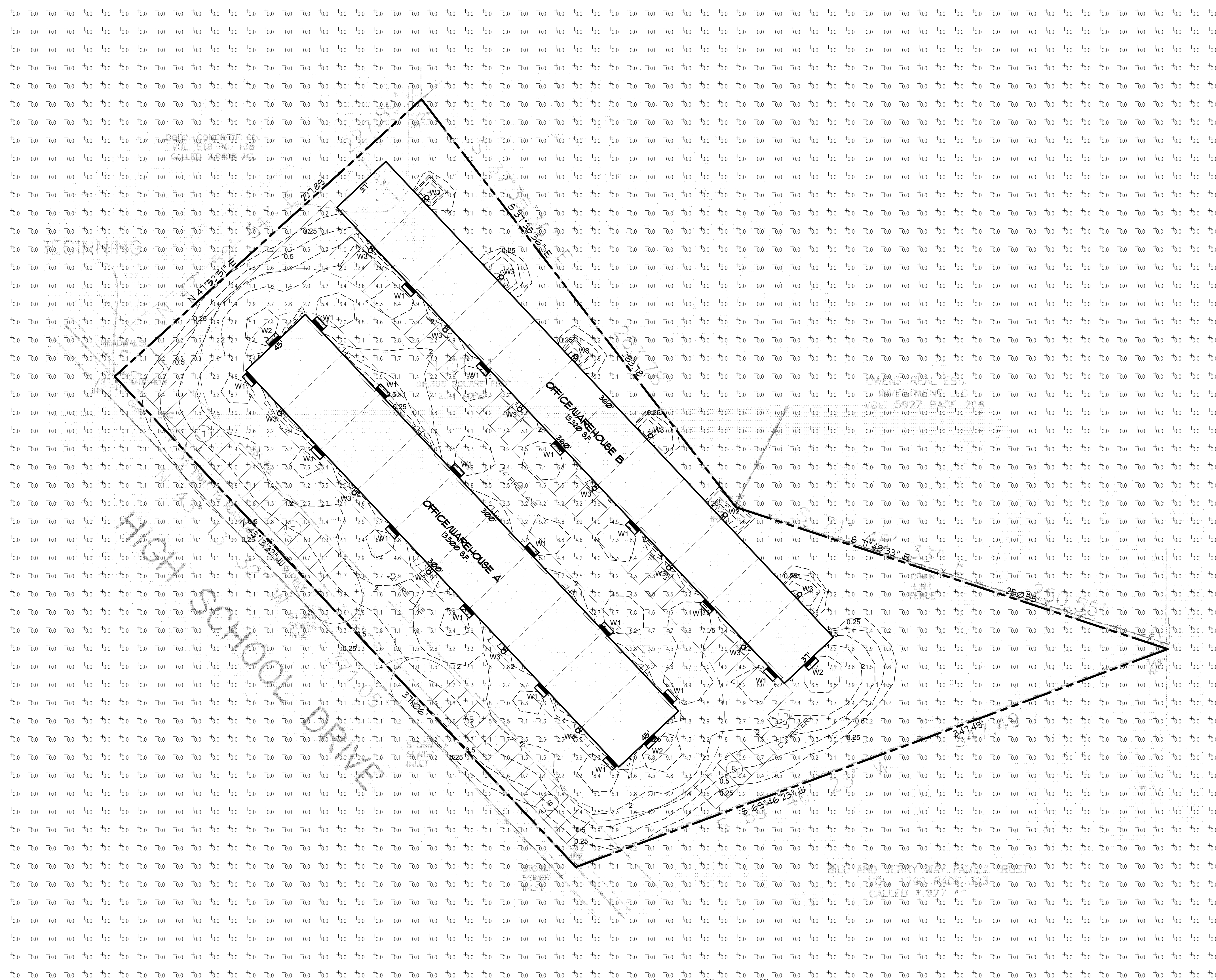
N/A

SCALE:

1" = 30'

SHEET:

1 of 1



1 PHOTOMETRIC SITE PLAN
1" = 30'-0"



- NOTES:
1. OUTDOOR LIGHTING CIRCUITS SHALL BE PROVIDED WITH PROGRAMMABLE TIME CLOCK AND PHOTOCELL CONTROLLERS PER INTERNATIONAL ENERGY CONSERVATION CODE.
 2. NUMBERS AND CONTOURS SHOWN ON PLAN ARE FOOT-CANDLE UNITS.
 3. ELECTRICAL CONTRACTOR SHALL VERIFY ILLUMINATION LEVELS AFTER INSTALLATION AND SHALL ADJUST LUMINAIRES AS NECESSARY.

OUTDOOR LIGHTING SCHEDULE						
SYMBOL	LABEL	QTY	MANUF. CAT #	DESCRIPTION	LAMP	TILT / HEIGHT
	W1	17	'RAB LIGHTING' #ALED4T50 (TYPE IV)	WALL PACK, METAL HOUSING, CLEAR FLAT GLASS LENS, CUTOFF TYPE.	SIX WHITE MULTI-CHIP LED'S, 50 WATT, 100 - 277 MULTI-VOLT	HORZ. 14'-0"
	W2	3	'RAB LIGHTING' #ALED4T50 (TYPE IV)	WALL PACK, METAL HOUSING, CLEAR FLAT GLASS LENS, CUTOFF TYPE.	SIX WHITE MULTI-CHIP LED'S, 50 WATT, 100 - 277 MULTI-VOLT	10° DOWN 14'-0"
	W3	17	'RAB LIGHTING' #ENTRA12	MINI WALL PACK, METAL HOUSING WITH PLASTIC LENS.	NINE WHITE LED'S, 12 WATT, 120-VOLT	HORZ. 7'-0"

OUTDOOR ILLUMINATION SUMMARY	
TOTAL LUMINAIRES	37
TOTAL KW LOAD	1.2
# POINTS	3,618
AVERAGE F.C.	0.4
MAXIMUM F.C.	9.2



LUMINAIRE TYPE 'W1' & 'W2'



LUMINAIRE TYPE 'W3'

NO.	REVISION	NO.	REVISION



4700 KEMBLE ST.
FORT WORTH, TX 76103
PH: 817-534-6579
FAX: 817-386-5365
WWW.JLBUILDSYS.COM

PROPOSED NEW OFFICE WAREHOUSE FACILITY FOR:
PLANTINUM SELF-STORAGE
HIGH SCHOOL DR., LOT 1, BODIN IND. TRACT
ROCKWALL, TEXAS

Date	06-16-2017
Scale	As Noted
Drawn	JLL
Job	17013

PHOTOMETRIC SITE PLAN
Sheet: **E10.1**

WPLED4T50/PC2



Ultra high output, high efficiency 50 Watt LED wallpacks. Patent Pending airflow technology ensures long LED and driver lifespan. 5 Year Warranty.
Color: Bronze Weight: 34.8 lbs

Project: PLATINUM CONSTRUCTION OFFICE/WAREHOUSE	Type: 'W1' & 'W2'
Prepared By: JL BUILDING SYSTEMS, LLC	Date: 06-16-2017

Driver Info		LED Info	
Type:	Constant Current	Watts:	50W
120V:	N/A	Color Temp:	5000K
208V:	0.27A	Color Accuracy:	71 CRI
240V:	0.23A	L70 Lifespan:	100000
277V:	0.20A	Lumens:	7517
Input Watts:	55W	Efficacy:	136 LPW
Efficiency:	90%		

Technical Specifications

Electrical

Photocell:
277V Button Photocell Included. Photocell is compatible with 208V/277V.

Driver:
Constant Current, Class 2, 1400mA, 100-277V, 50-60Hz, 0.8A, Power Factor 99%

Surge Protection:
6kV surge suppression protection tested in accordance with IEEE/ANSI C62.41.2.

THD:
6.1% at 120V, 9.4% at 277V

Power Factor:
99.6% at 120V, 96% at 277V

Listings

DLC Listed:
This product is on the Design Lights Consortium (DLC) Qualified Products List and is eligible for rebates from DLC Member Utilities.

UL Listing:
Suitable for wet locations as a downlight.

IESNA LM-79 & IESNA LM-80 Testing:
RAB LED fixtures have been tested by an independent laboratory in accordance with IESNA LM-79 and 80, and have received the Department of Energy "Lighting Facts" label.

Dark Sky Approved:
The International Dark Sky Association has approved this product as a full cutoff, fully shielded luminaire.

LED Characteristics

Lifespan:
100,000-hour LED lifespan based on IES LM-80 results and TM-21 calculations.

LEDs:
Multi-chip, high-output, long-life LEDs

Color Consistency:
7-step MacAdam Ellipse binning to achieve consistent fixture-to-fixture color.

Color Stability:
LED color temperature is warranted to shift no more than 200K in CCT over a 5 year period.

Color Uniformity:
RAB's range of CCT (Correlated Color Temperature) follows the guidelines of the American National Standard for Specifications for the Chromaticity of Solid State Lighting (SSL) Products, ANSI C78.377-2015.

Construction

IES Classification:
The Type IV distribution (also known as a Forward Throw) is especially suited for mounting on the sides of buildings and walls, and for illuminating the perimeter of parking areas. It produces a semi-circular distribution with essentially the same candlepower at lateral angles from 90° to 270°.

IP Rating:
Ingress Protection rating of IP66 for dust and water

Ambient Temperature:
Suitable for use in 104° F (40° C) ambient temperatures.

Cold Weather Starting:
Minimum starting temperature is -40° F (-40° C)

Thermal Management:

Superior thermal management design with external Air-Flow fins provides maximum operational life, even in high ambient temperature environments.

Housing:
Die cast aluminum housing, lens frame and mounting arm.

Mounting:
Heavy-duty mounting arm with "O" ring seal & stainless steel screws.

Reflector:
Specular vacuum-metallized polycarbonate

Gaskets:
High temperature silicone gaskets

Finish:
Formulated for high-durability and long lasting color.

Green Technology:
Mercury and UV free. RoHS compliant components. Polyester powder coat finish formulated without the use of VOC or toxic heavy metals.

Other

California Title 24:
WPLED50 with available photocell option complies with 2013 California Title 24 building and electrical codes as a commercial outdoor pole-mounted fixture < 75 Watts. Add /PCT to include a photocell.

WPLED4T50/PC2



Technical Specifications (continued)

Other

Patents:
The WPLED™ design is protected by patents pending in the U.S., Canada, China, Taiwan and Mexico.

Warranty:
RAB warrants that our LED products will be free from defects in materials and workmanship for a period of five (5) years from the date of delivery to the end user, including coverage of light output, color stability, driver performance and fixture finish.

Country of Origin:
Designed by RAB in New Jersey and assembled in the USA by RAB's IBEW Local 5 workers.

Buy American Act Compliant:
This product is a COTS item manufactured in the United States, and is compliant with the Buy American Act.

Recovery Act (ARRA) Compliant:
This product complies with the 5225-21 "Required Use of American Iron, Steel, and Manufactured Goods" Buy American Act-Construction Materials (October 2010).

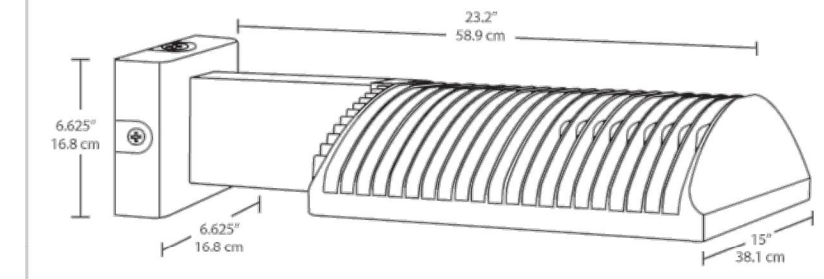
GSA Schedule:
Suitable in accordance with FAR Subpart 25.4.

Equivalency:
Replaces 200W Metal Halide.

Optical

BUG Rating:
80 U0 G2

Dimensions



Features

- High output, high efficiency LED
- Maintains 70% of initial lumens at 100,000 hours
- Weatherproof high temperature silicone gaskets
- Superior heat sinking with die cast aluminum housing and external fins
- 100 up to 277 Volts
- 5-year warranty

Ordering Matrix

Family	Distribution	Watts	Color Temp	Mount	Finish	Voltage	Photocell	Dimming	Sensor	BI-Level
WPLED	4T	50		FX			PC2			
	2T = Type II	50 = 5000K (Cool)	Blank = 5000K (Cool)	Blank = Standard	Blank = Bronze	Blank = 120-277V	Blank = No Photocell	Blank = No Dimming	WS2 = Multi-Level Motion Sensor (Only available for 120-277V with /D10 for 50W)	Blank = No BI-Level
	3T = Type III	50W	Y = 3000K (Warm)	FX = Flat	W = White	W = 480V	IPC = 120V Button	/D10 = Dimmable		/BL = BI-Level
	4T = Type IV		N = 4000K (Neutral)				IPC2 = 277 Button			
							IPCS = 120V Swivel			
							IPCS2 = 277V Swivel			
							IPCT = 120-277V Twistlock			
							IPCS4 = 480V Swivel			
							IPCT4 = 480V Twistlock			

Need help? Tech help line: (888) RAB-1000 Email: sales@rabweb.com Website: www.rabweb.com
Copyright © 2014 RAB Lighting Inc. All Rights Reserved Note: Specifications are subject to change at any time without notice

ENTRA12/PC



Affordable, high-performance, low-maintenance LED doorway light. Suitable for mounting heights up to 10', and replaces 70W high pressure sodium. 100,000-Hour LED lifespan. 5-Year warranty.
Color: Bronze Weight: 3.0 lbs

Project: PLATINUM CONSTRUCTION OFFICE/WAREHOUSE	Type: 'W3'
Prepared By: JL BUILDING SYSTEMS, LLC	Date: 06-16-2017

Driver Info		LED Info	
Type:	Constant Current	Watts:	12W
120V:	0.3A	Color Temp:	5000K
208V:	N/A	Color Accuracy:	70 CRI
240V:	N/A	L70 Lifespan:	100000
277V:	N/A	Lumens:	1284
Input Watts:	14W	Efficacy:	89 LPW
Efficiency:	83%		

Technical Specifications

Listings

UL Listing:
Suitable for wet locations as downlight. Suitable for mounting within 1.2m (4ft) of the ground.

ADA Compliant:
ENTRA™ is ADA Compliant.

IESNA LM-79 & LM-80 Testing:
RAB LED luminaires have been tested by an independent laboratory in accordance with IESNA LM-79 and LM-80, and have received the Department of Energy "Lighting Facts" label.

Construction

IP Rating:
Ingress Protection rating of IP66 for dust and water

Cold Weather Starting:
Minimum starting temperature is -40° F (-40° C)

Maximum Ambient Temperature:
Suitable for use in 104° F (40° C) ambient temperatures

Back Housing:
Die-cast aluminum.

Lens/Housing Cover:
Vandal resistant polycarbonate molded housing cover and lens.

Mounting:
Heavy die cast aluminum with 1/2" back knockout and mounting template for mounting to 4" box.

Recommended Mounting Height:

Up to 10 ft.

Reflectors (2):
White aluminum reflector topped with vacuum metallized polycarbonate LED reflector.

Gaskets:
High-temperature silicone

Finish:
Formulated for high-durability and long lasting color.

Green Technology:
Mercury and UV free. RoHS compliant components. Polyester powder coat finish formulated without the use of VOC or toxic heavy metals.

LED Characteristics

LED:
12W multi-chip, long life LED.

Lifespan:
100,000-hour LED lifespan based on IES LM-80 results and TM-21 calculations.

Correlated Color Temp. (Nominal CCT):
5000K

Color Stability:
LED color temperature is warranted to shift no more than 200K in CCT over a 5 year period.

Color Consistency:

7-step MacAdam Ellipse binning to achieve consistent fixture-to-fixture color.

Electrical

Driver:
Constant Current, Class 2, 100-277V, 50/60Hz, 4kV Surge Protection, 350mA, 100-240VAC, 0.3 - 0.15 A, 277VAC: 0.15 A, Power Factor: 98.5%.

THD:
9.9% at 120V

Photocell:
120V Button Photocell included. Photocell is only compatible with 120V.

Other

California Title 24:
ENTRA12/PC complies with 2013 California Title 24 building and electrical codes as a commercial outdoor non-pole-mounted fixture < 30 Watts.

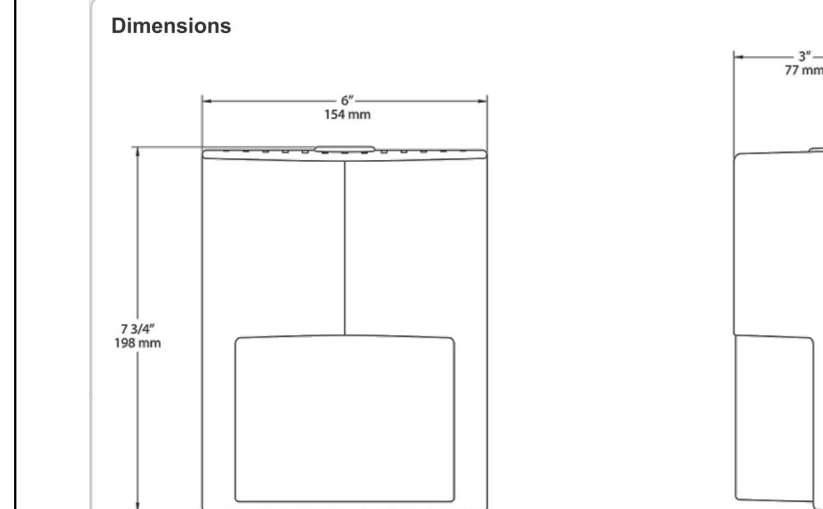
Patents:
The design of the ENTRA™ is protected by patents pending in US, Canada, China, Taiwan and Mexico.

Warranty:
RAB warrants that our LED products will be free from defects in materials and workmanship for a period of five (5) years from the date of delivery to the end user, including coverage of light output, color stability, driver performance and fixture finish.

Equivalency:
Replaces 70W HPS.

Need help? Tech help line: (888) RAB-1000 Email: sales@rabweb.com Website: www.rabweb.com
Copyright © 2014 RAB Lighting Inc. All Rights Reserved Note: Specifications are subject to change at any time without notice

ENTRA12/PC



Features

- Save over \$700 in energy costs over life of fixture
- Equivalent to 70W high pressure sodium
- Durable vandal-resistant polycarbonate housing
- Low-profile and ADA compliant
- 100,000-hour LED lifespan
- 5-Year warranty

Ordering Matrix

Family	Watts	Color Temp	Finish	Photocell
ENTRA	12	Blank = 5000K (Cool) Y = 3000K (Warm) N = 4000K (Neutral)	Blank = Bronze W = White	/PC = 120V Button /PC2 = 277V Button /PCS = 120V Swivel /PCS2 = 277V Swivel

Need help? Tech help line: (888) RAB-1000 Email: sales@rabweb.com Website: www.rabweb.com
Copyright © 2014 RAB Lighting Inc. All Rights Reserved Note: Specifications are subject to change at any time without notice

NO.	REVISION	NO.	REVISION



4700 KEMBLE ST.
FORT WORTH, TX 76103
PH: 817-534-6579
FAX: 817-386-5365
WWW.JLBUILDSYS.COM

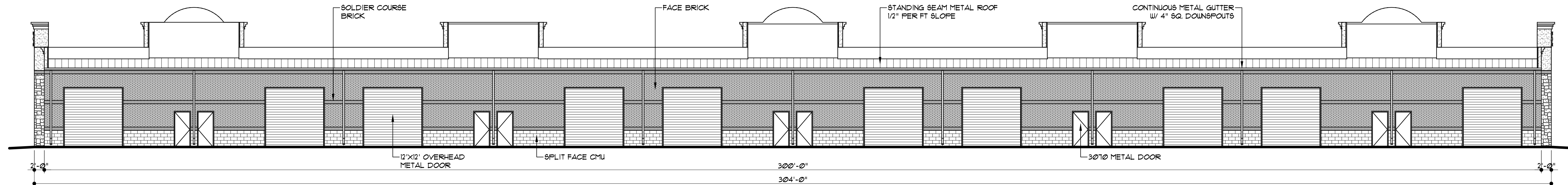
PROPOSED NEW OFFICE/WAREHOUSE FACILITY FOR:

PLATINUM SELF-STORAGE
HIGH SCHOOL DR., LOT 1, BODIN IND. TRACT
ROCKWALL, TEXAS

Date	06-16-2017	OUTDOOR LIGHTING SPECIFICATIONS
Scale	As Noted	
Drawn	JLL	
Job	17013	

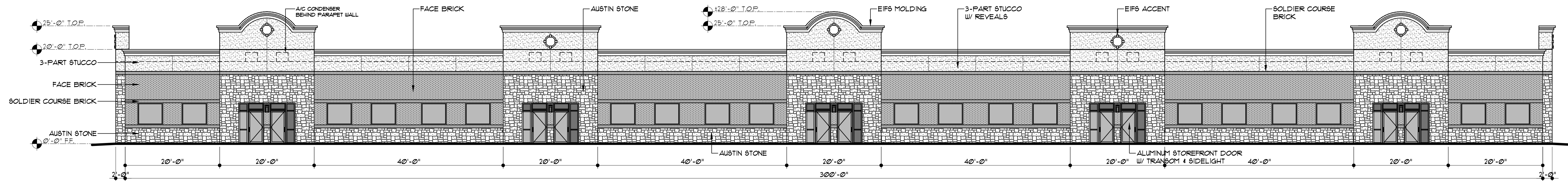
Sheet: **E10.2**

MATERIAL COVERAGE - NORTH ELEVATION		
ITEM	AREA SF.	PERCENT.
ELEVATION AREA	4865	
DOORS & WINDOWS (DED.)	1679	
ACCOUNTABLE AREA	3186	100%
MASONRY (STONE)	59	2%
MASONRY (SPLIT FACE CMU)	467	15%
MASONRY (BRICK)	2631	83%
MASONRY (3-PART STUCCO)	21	1%
EIFS MOLDING	8	2%

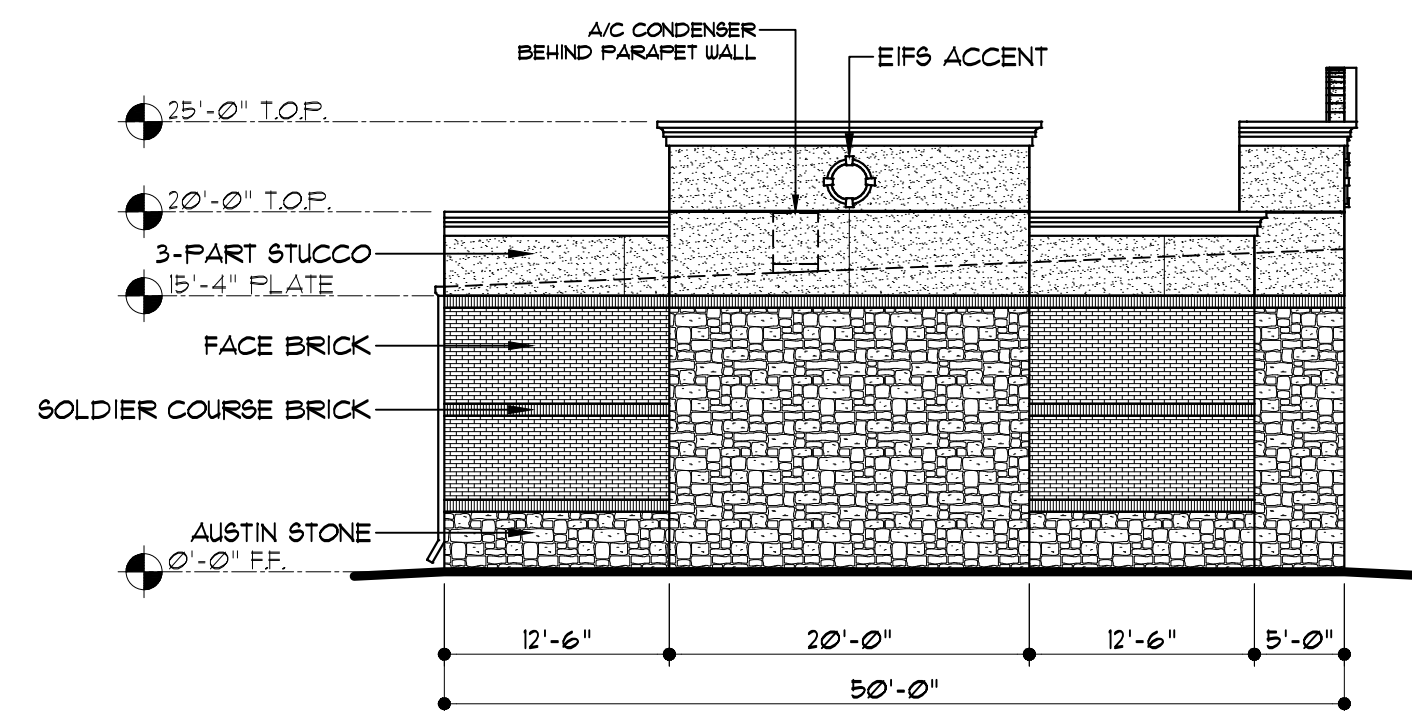


1 NORTH ELEVATION - BLDG. A
3/32" = 1'-0"

MATERIAL COVERAGE - SOUTH ELEVATION		
ITEM	AREA SF.	PERCENT.
ELEVATION AREA	6658	
DOORS & WINDOWS (DED.)	960	
ACCOUNTABLE AREA	5698	100%
MASONRY (STONE)	1694	30%
MASONRY (BRICK)	2003	35%
MASONRY (3-PART STUCCO)	1545	27%
EIFS MOLDING	456	8%



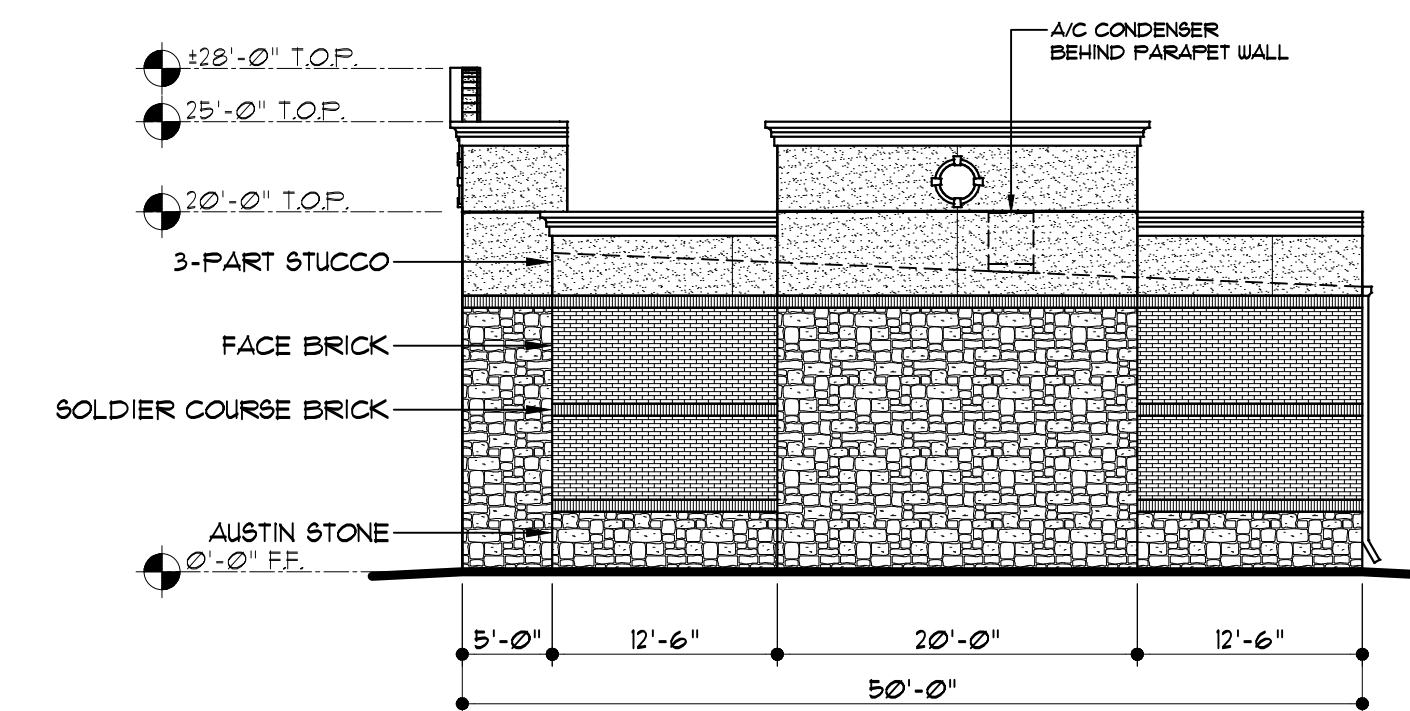
2 SOUTH ELEVATION - BLDG. A
3/32" = 1'-0"



3 WEST ELEVATION - BLDG. A
3/32" = 1'-0"

MATERIAL COVERAGE - WEST ELEVATION		
ITEM	AREA SF.	PERCENT.
ELEVATION AREA	1129	
DOORS & WINDOWS (DED.)	0	
ACCOUNTABLE AREA	1129	100%
MASONRY (STONE)	450	40%
MASONRY (BRICK)	351	31%
MASONRY (3-PART STUCCO)	253	22%
EIFS MOLDING	75	7%

MATERIAL COVERAGE - EAST ELEVATION		
ITEM	AREA SF.	PERCENT.
ELEVATION AREA	1129	
DOORS & WINDOWS (DED.)	0	
ACCOUNTABLE AREA	1129	100%
MASONRY (STONE)	450	40%
MASONRY (BRICK)	351	31%
MASONRY (3-PART STUCCO)	253	22%
EIFS MOLDING	75	7%



4 EAST ELEVATION - BLDG. A
3/32" = 1'-0"

NO.	REVISION	NO.	REVISION



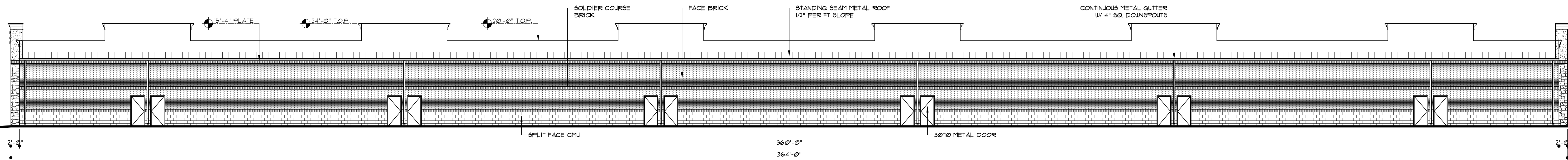
4700 KEMBLE ST.
FORT WORTH, TX 76103
PH: 817-534-6579
FAX: 817-386-5365
WWW.JLBUILDINGSYSTEMS.COM

PROPOSED NEW OFFICE/WAREHOUSE FACILITY FOR:
PLANTINUM SELF-STORAGE
HIGH SCHOOL DR., LOT 1, BODIN IND. TRACT
ROCKWALL, TEXAS

Date	06-16-2017
Scale	As Noted
Drawn	JLL
Job	17013

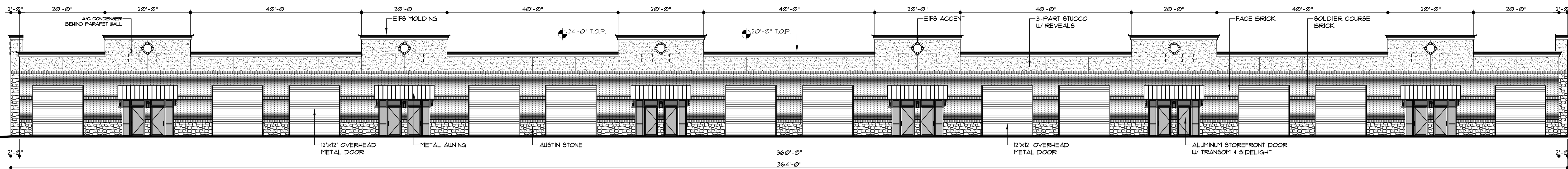
ELEVATIONS
BUILDING A
Sheet
A2.1

MATERIAL COVERAGE - NORTH ELEVATION		
ITEM	AREA SF.	PERCENT.
ELEVATION AREA	5010	
DOORS & WINDOWS (DED.)	281	
ACCOUNTABLE AREA	4723	100%
MASONRY (STONE)	58	1%
MASONRY (SPLIT FACE CMU)	1067	23%
MASONRY (BRICK)	3541	75%
MASONRY (3-PART STUCCO)	42	1%
EIFS MOLDING	8	1%

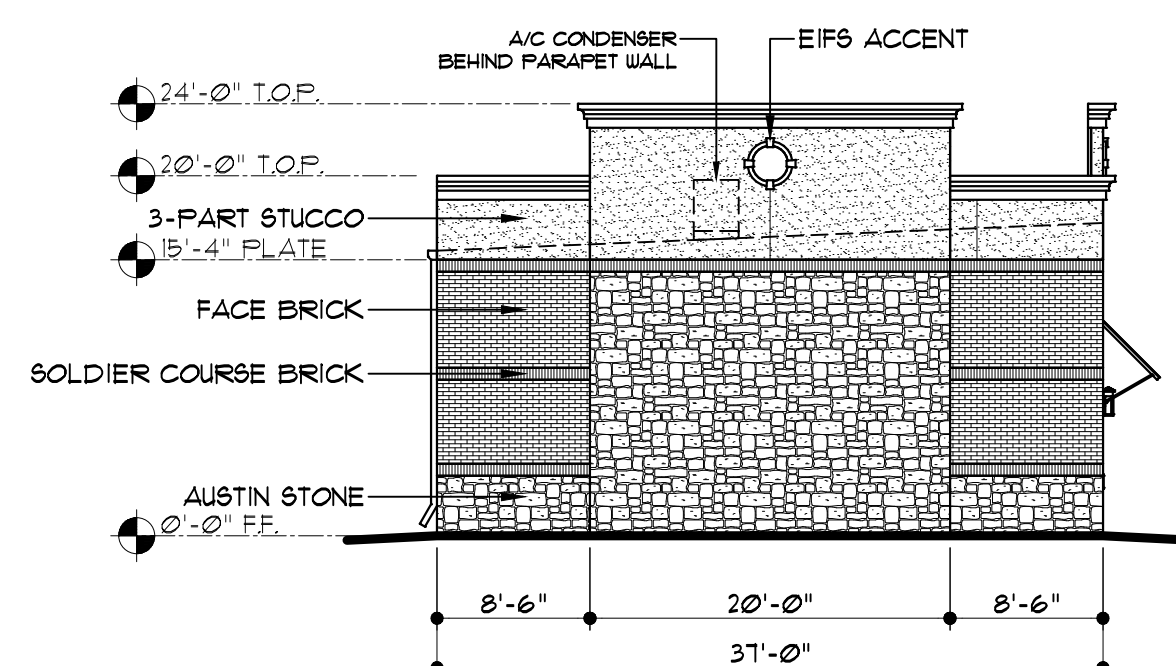


1 NORTH ELEVATION - BLDG. B
3/32" = 1'-0"

MATERIAL COVERAGE - SOUTH ELEVATION		
ITEM	AREA SF.	PERCENT.
ELEVATION AREA	7183	
DOORS & WINDOWS (DED.)	2283	
ACCOUNTABLE AREA	5500	100%
MASONRY (STONE)	565	10%
MASONRY (BRICK)	2681	49%
MASONRY (3-PART STUCCO)	1714	31%
EIFS MOLDING	540	10%



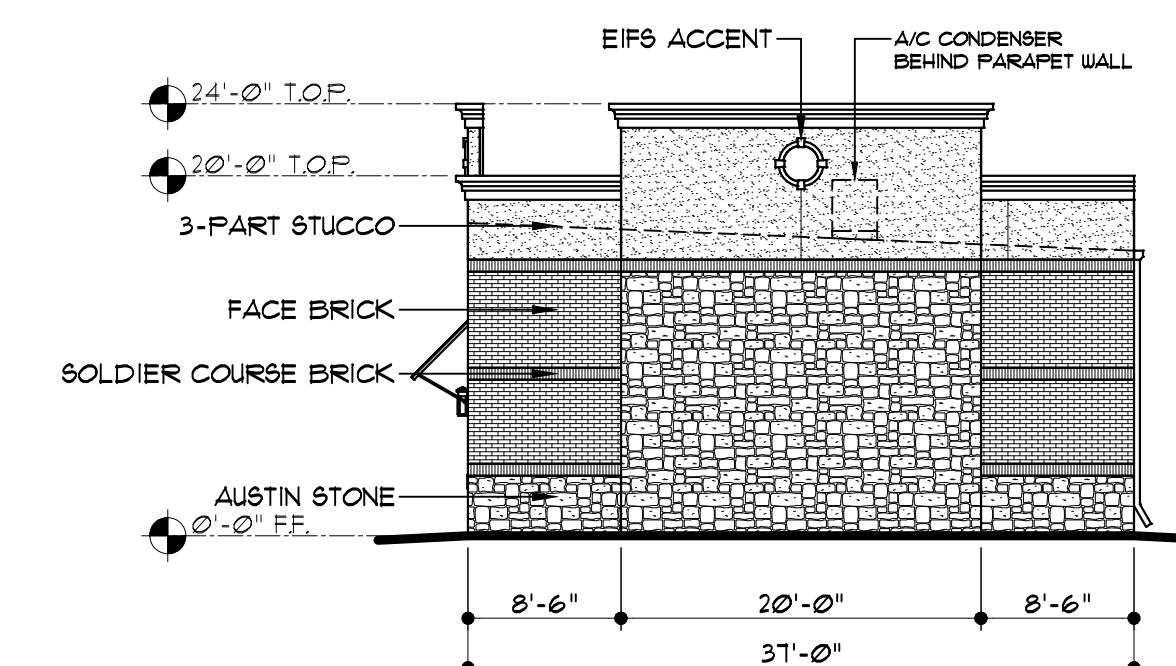
2 SOUTH ELEVATION - BLDG. B
3/32" = 1'-0"



3 WEST ELEVATION - BLDG. B
3/32" = 1'-0"

MATERIAL COVERAGE - WEST ELEVATION		
ITEM	AREA SF.	PERCENT.
ELEVATION AREA	820	
DOORS & WINDOWS (DED.)	0	
ACCOUNTABLE AREA	820	100%
MASONRY (STONE)	350	43%
MASONRY (BRICK)	211	26%
MASONRY (3-PART STUCCO)	203	25%
EIFS MOLDING	56	7%

MATERIAL COVERAGE - EAST ELEVATION		
ITEM	AREA SF.	PERCENT.
ELEVATION AREA	820	
DOORS & WINDOWS (DED.)	0	
ACCOUNTABLE AREA	820	100%
MASONRY (STONE)	350	43%
MASONRY (BRICK)	211	26%
MASONRY (3-PART STUCCO)	203	25%
EIFS MOLDING	56	7%



4 EAST ELEVATION - BLDG. B
3/32" = 1'-0"

NO.	REVISION	NO.	REVISION



4700 KEMBLE ST.
FORT WORTH, TX 76103
PH: 817-534-6579
FAX: 817-386-5365
WWW.JLBUILDINGSYS.COM

PROPOSED NEW OFFICE/WAREHOUSE FACILITY FOR:
PLANTINUM SELF-STORAGE
HIGH SCHOOL DR., LOT 1, BODIN IND. TRACT
ROCKWALL, TEXAS

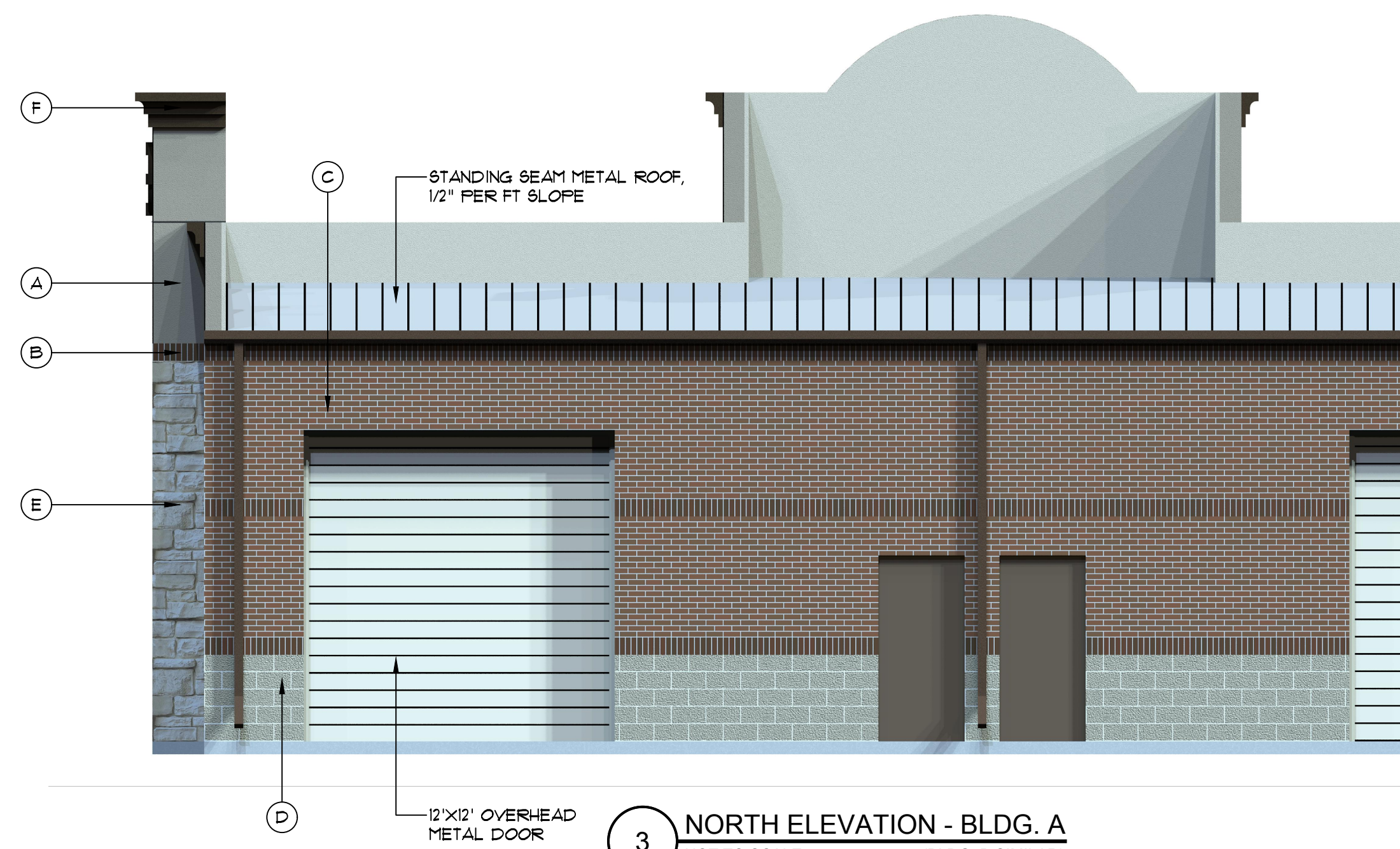
Date	06-16-2017	ELEVATIONS BUILDING B
Scale	As Noted	
Drawn	JLL	
Job	17013	
Sheet		A2.2



1 SE PERSPECTIVE VIEW
NOT TO SCALE



2 SOUTH ELEVATION - BLDG. A
NOT TO SCALE (BLDG. B SIMILAR)



3 NORTH ELEVATION - BLDG. A
NOT TO SCALE (BLDG. B SIMILAR)

BUILDING EXTERIOR MATERIALS				
MARK	MATERIAL	BRAND	COLOR/MOD.	REMARKS
(A)	3-PART STUCCO	STO CORP.	MOONLIGHT SAND MOD. 10611	COLOR-INTRINSIC
(B)	SOLDIER BRICK	'ACME'	QUORUM DARK	HARD-FIRED, INTEGRALLY-COLORED
(C)	BRICK	'ACME'	QUORUM	HARD-FIRED, INTEGRALLY-COLORED
(D)	SPLIT FACE CMU	'OLD CASTLE'	LIGHT GRAY MOD. PREMIUM 9D-33	INTEGRALLY-COLORED, SAME ASTM AS CLAY BRICK
(E)	AUSTIN STONE	'AGUADO STONE'	AUSTIN TEXAS CREAM MOD. NO. 28	NATURAL STONE
(F)	EIFS	'DRYVIT'	SWISS MOCHA MOD. NO. 305	COLOR-INTRINSIC

NO.	REVISION	NO.	REVISION



4700 KEMBLE ST.
FORT WORTH, TX 76103
PH: 817-534-6579
FAX: 817-386-5365
WWW.JLBUILDINGSYS.COM

PROPOSED NEW OFFICE/WAREHOUSE FACILITY FOR:
PLANTINUM SELF-STORAGE
HIGH SCHOOL DR., LOT 1, BODIN IND. TRACT
ROCKWALL, TEXAS

Date	06-16-2017	PERSPECTIVE VIEW & MATERIALS
Scale	As Noted	
Drawn	JLL	
Job	17013	
Sheet:		A2.3