

LEGEND

B	BOLLARD
EM	ELECTRIC METER
PP	POWER POLE
LS	LIGHT STANDARD
WM	WATER METER
WV	WATER VALVE
ICV	IRRIGATION CONTROL VALVE
FH	FIRE HYDRANT
C	CLEANOUT
MH	MANHOLE
TSC	TRAFFIC SIGNAL CONTROL
TSP	TRAFFIC SIGNAL POLE
TELE	TELEPHONE BOX
FL	FLOOD LIGHT
FR	TRAFFIC SIGN
SIG	1/2-INCH IRON ROD
IRS	W/PACHECH KOCH" CAP SET
(C.M.)	CONTROLLING MONUMENT
---	PROPERTY LINE
-X-	FENCE
OH	OVERHEAD UTILITY LINE
E	UNDERGROUND ELECTRIC LINE
T	UNDERGROUND TELEPHONE LINE
C	UNDERGROUND CABLE LINE
6" W	UNDERGROUND WATER LINE
6" SS	UNDERGROUND CABLE LINE
613	EXIST CONTOUR
---	PROPOSED FIRE LANE

- SITE PLAN NOTES**
- A SEPARATE SIGN PERMIT WILL BE REQUIRED FOR ALL SIGNS.
 - THE INTENT OF THIS PLAN IS TO SHOW THE CONCEPTUAL DRAINAGE DESIGN FOR THE PROPOSED PROJECT AS PART OF THE SITE PLAN APPROVAL PROCESS ONLY AND SHALL NOT BE CONSTRUCTED AS A FINAL DESIGN.
 - LIGHTING LEVELS ARE NOT TO EXCEED 0.20-FC AT THE PROPERTY LINE(S).
 - SUBJECT PROPERTY IS SHOWN ON THE NATIONAL FLOOD INSURANCE PROGRAM FLOOD INSURANCE RATE MAP FOR ROCKWALL COUNTY, TEXAS AND INCORPORATED AREAS, MAP NO. 4839700045L, COMMUNITY-PANEL NO. 4804530045 L, EFFECTIVE DATE: SEPTEMBER 26, 2008. ALL OF THE SUBJECT PROPERTY IS SHOWN TO BE LOCATED IN ZONE "X" ON SAID MAP. THE LOCATION OF THE SAID FLOODZONES BASED ON SAID MAP IS APPROXIMATE AND IS NOT LOCATED ON THE GROUND. RELEVANT ZONES ARE DEFINED ON SAID PAM AS FOLLOWS:
 UNDER ZONE X - OTHER AREAS: AREAS DETERMINED TO BE OUTSIDE 100-YEAR FLOOD PLAIN.
- PROPOSED USE:**
INDUSTRIAL FACILITY
 - GROSS BUILDING AREA:**
INDUSTRIAL BUILDING: 389,500 SF
NUMBER OF STORIES: 1
 - BUILDING HEIGHT:**
MAX BUILDING HEIGHT=40'-4"
 - PARKING REQUIRED:**
PARKING RATIO = 1 SPACE PER 1,000 SF OF BUILDING
TOTAL REQUIRED = 390 SPACES
 - PARKING PROVIDED:**
PROPOSED REGULAR PARKING = SPACES
PROPOSED H.C. PARKING = 6 SPACES
TOTAL PROVIDED = 128+6 = 132 SPACES
 - SITE COVERAGE:**

TOTAL SITE:	1,308,325 SF (30.035 AC)
BUILDING:	389,500 SF (8.94 AC)
PAVEMENT:	360,422 SF (8.27 AC)
LANDSCAPE:	558,403 SF (12.82 AC)

BUILDING COVERAGE:	29.8% < 60.0% MAX
PAVEMENT COVERAGE:	27.5%
LANDSCAPE COVERAGE:	42.7%
PERCENT IMPERVIOUS:	57.3% < 85.0%-90.0% MAX
 - ZONING:**
LIGHT INDUSTRIAL



PRELIMINARY NOT FOR CONSTRUCTION
 THIS DOCUMENT IS ISSUED FOR THE PURPOSE OF SCHEMATIC REVIEW ONLY AND IS NOT INTENDED FOR PERMITTING, BIDDING, OR CONSTRUCTION PURPOSES.
 PLANS PREPARED UNDER THE DIRECT SUPERVISION OF CHET T. LEUGERS, P.E.
 TEXAS REGISTRATION NO. 122042
 DATE: 06/07/2016

ISSUED FOR PRELIMINARY PRICING PURPOSES ONLY
 (SUBJECT TO REVISION PRIOR TO CONSTRUCTION)
 THESE DOCUMENTS HAVE BEEN PREPARED BY THE ENGINEER WITH THE INTENT OF COMPLYING WITH ALL CITY STANDARD REQUIREMENTS. THESE DOCUMENTS HAVE NOT BEEN APPROVED AND RELEASED FOR CONSTRUCTION BY THE CITY AS OF THIS DATE AND, THEREFORE, REVISIONS MAY BE REQUIRED PRIOR TO CONSTRUCTION. BY ANY USE OF THESE DOCUMENTS, THE USER AFFIRMS THEIR UNDERSTANDING OF THE PRELIMINARY STATUS OF THE PLANS AND THE POTENTIAL FOR REVISION PRIOR TO ANY CONSTRUCTION.

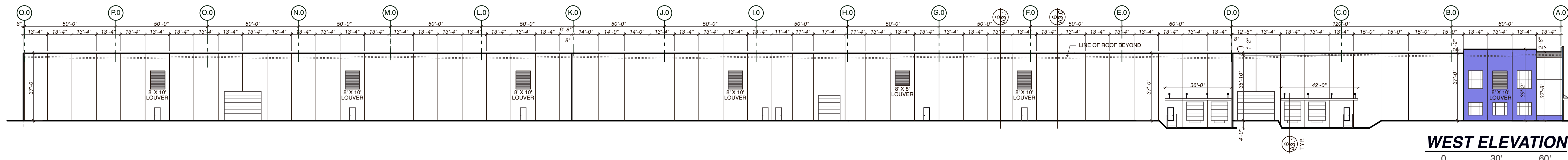
NO.	DATE	REVISION

Pacheco Koch 7557 RAMBLER ROAD, SUITE 1400
 DALLAS, TX 75231 972.235.3031
 TX REG. ENGINEERING FIRM F-14439
 TX REG. SURVEYING FIRM LS-10193805

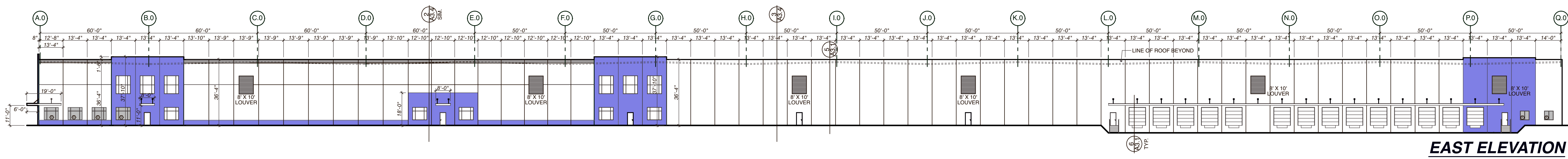
SITE PLAN
ROCKWALL MANUFACTURING FACILITY
NORTHWEST CORNER OF DISCOVERY
BOULEVARD & DATA DRIVE
CITY OF ROCKWALL, ROCKWALL COUNTY, TEXAS

DESIGN	DRAWN	DATE	SCALE	NOTES	FILE	NO.
CTL	RHB	JUNE 2016	1"=80'			SP-1

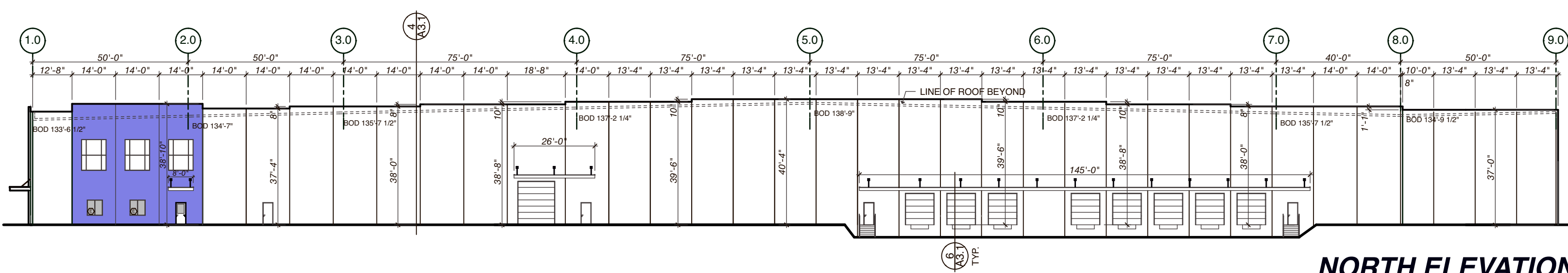
CLEUGERS 6/7/2016 10:56 AM
 M:\DWG-37\3782-16.05A\DWG\CIVIL C.3D 2015\3782-16.05A\TLDWG



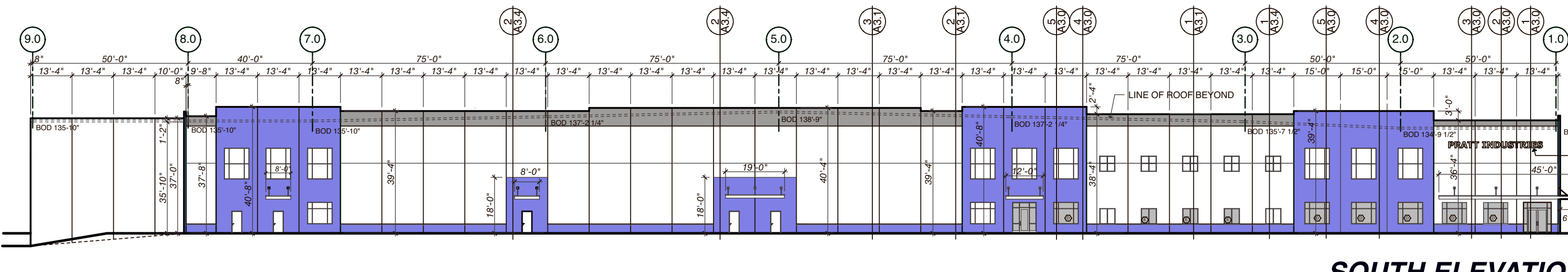
WEST ELEVATION



EAST ELEVATION



NORTH ELEVATION



SOUTH ELEVATION

NO.	DATE	BY	DESCRIPTION
1.	4.12.16		RELEASED FOR PERMIT APPLICATION

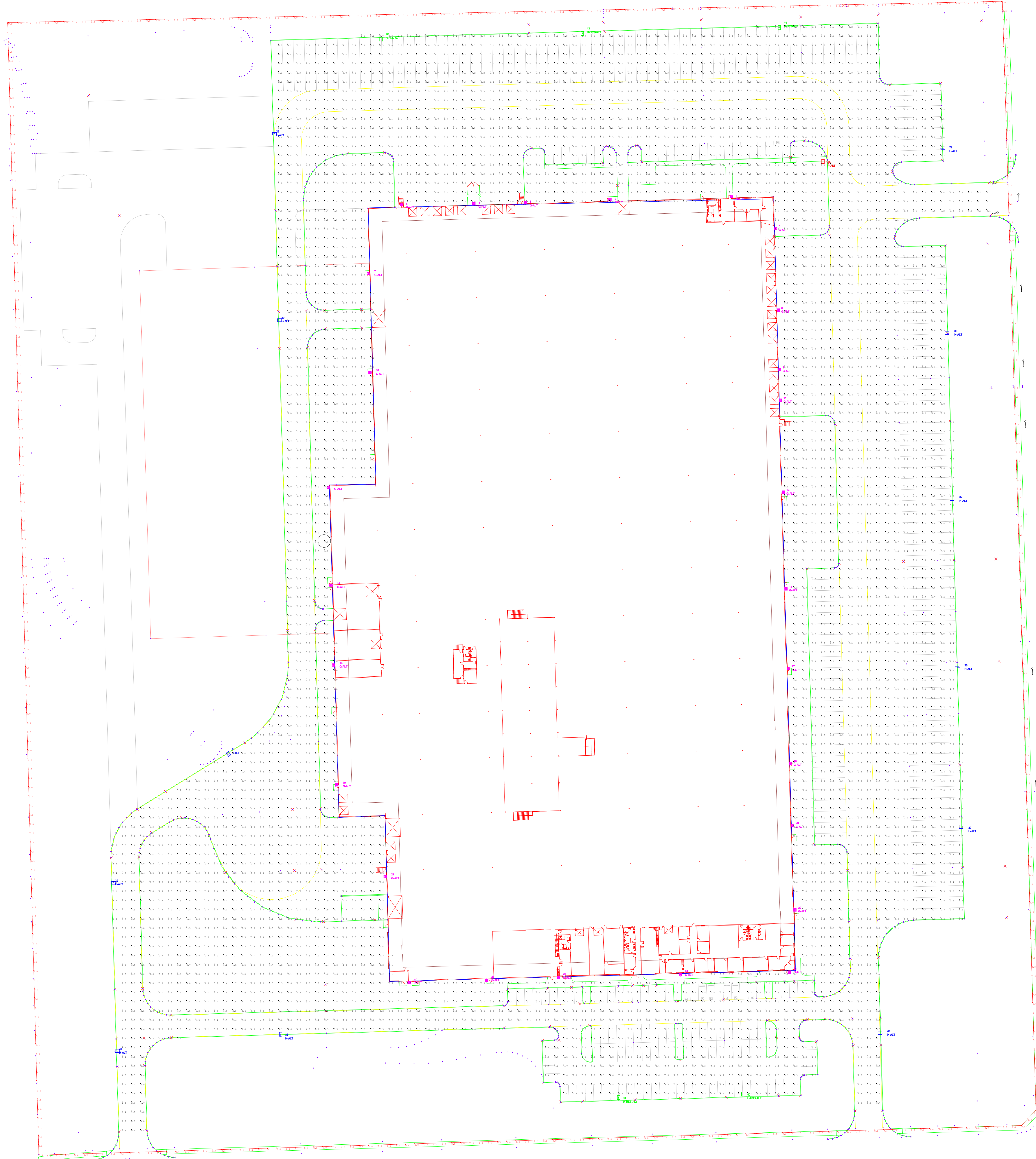
SCALE	DATE
	4.12.16
DWN BY	CHECKED
MV PROJ. NO.	JOB. NO.
	16.007
TITLE	
	ELEVATIONS
SHEET NO.	



Texas Lighting Sales

831 West Eulless Blvd, Suite 15
Eulless, Texas 76040
Tel: 817-267-9300

Client: CEC Electrical - Fort Worth, Texas



Symbol	Qty	Label	Arrangement	Total Lamp Lumens	LF	Description	Lum. Watts
1	1	HAL	SINGLE	N/A	0.812	GEORGE TO LED FT 30W ADJ	30W
2	1	HAL	SINGLE	N/A	0.812	GEORGE TO LED FT 30W ADJ	30W
3	1	HAL	SINGLE	N/A	0.812	GEORGE TO LED FT 30W ADJ	30W
4	1	HAL	SINGLE	N/A	0.812	GEORGE TO LED FT 30W ADJ	30W

Property Line	Calc Type	Units	Avg	Min	Max	AngMin	MaxMin	FlpGlr	FlpGts
Site at Footcandle	Burnman	FC	0.04	0.2	0.0	N/A	N/A	10	N/A
	Burnman	FC	2.18	1.12	0.0	N/A	N/A	10	10

Light	Type	Description
Building	Polygon-Fix	(Assumed Reference X)

Building mounted fixtures at 20' mounting height
Pole mounted fixtures at 30' mounting height

LumID	Label	X	Y	Z	Fix
1	HAL	755.766	1557.209	26	0
2	HAL	823.686	1544.74	26	0
3	HAL	131.068	1044.302	26	0
4	HAL	476.508	1044.188	26	0
5	HAL	397.539	1044.188	26	0
6	HAL	802.328	1017.426	26	0
7	HAL	302.089	962.730	26	0
8	HAL	802.533	928.933	26	0
9	HAL	802.651	924.362	26	0
10	HAL	364.497	861.218	26	0
11	HAL	807.619	851.685	26	0
12	HAL	119.126	756.233	26	0
13	HAL	810.76	751.084	26	0
14	HAL	102.291	629.141	26	0
15	HAL	813.717	625.202	26	0
16	HAL	102.667	543.584	26	0
17	HAL	1816.524	539.243	26	0
18	HAL	1819.951	495.584	26	0
19	HAL	138.465	412.802	26	0
20	HAL	807.651	406.584	26	0
21	HAL	181	312.803	26	0
22	HAL	808.52	274.895	26	0
23	HAL	1816.588	270.717	26	0
24	HAL	138.468	207.788	26	0
25	HAL	397.589	202.787	26	0
26	HAL	468.655	201.875	26	0
27	HAL	469.528	198.957	26	0
28	HAL	138.051	138.985	30	0
29	HAL	807.933	133.921	30	0
30	HAL	281.79	918.181	30	0
31	HAL	807.951	468.87	30	0
32	HAL	16.549	306.232	30	0
33	HAL	805.89	138.985	30	0
34	HAL	16.559	223.81	30	0
35	HAL	803.381	442.874	30	0
36	HAL	160.461	402.845	30	0
37	HAL	198.714	723.321	30	0
38	HAL	159.465	441.847	30	0
39	HAL	1009.331	351.896	30	0
40	HAL	178.502	71.463	30	0
41	HAL	433.255	49.803	30	0
42	HAL	178.502	129.762	30	0
43	HAL	181.701	123.716	30	0
44	HAL	807.971	129.688	30	0
45	HAL	855.473	1087.051	30	0

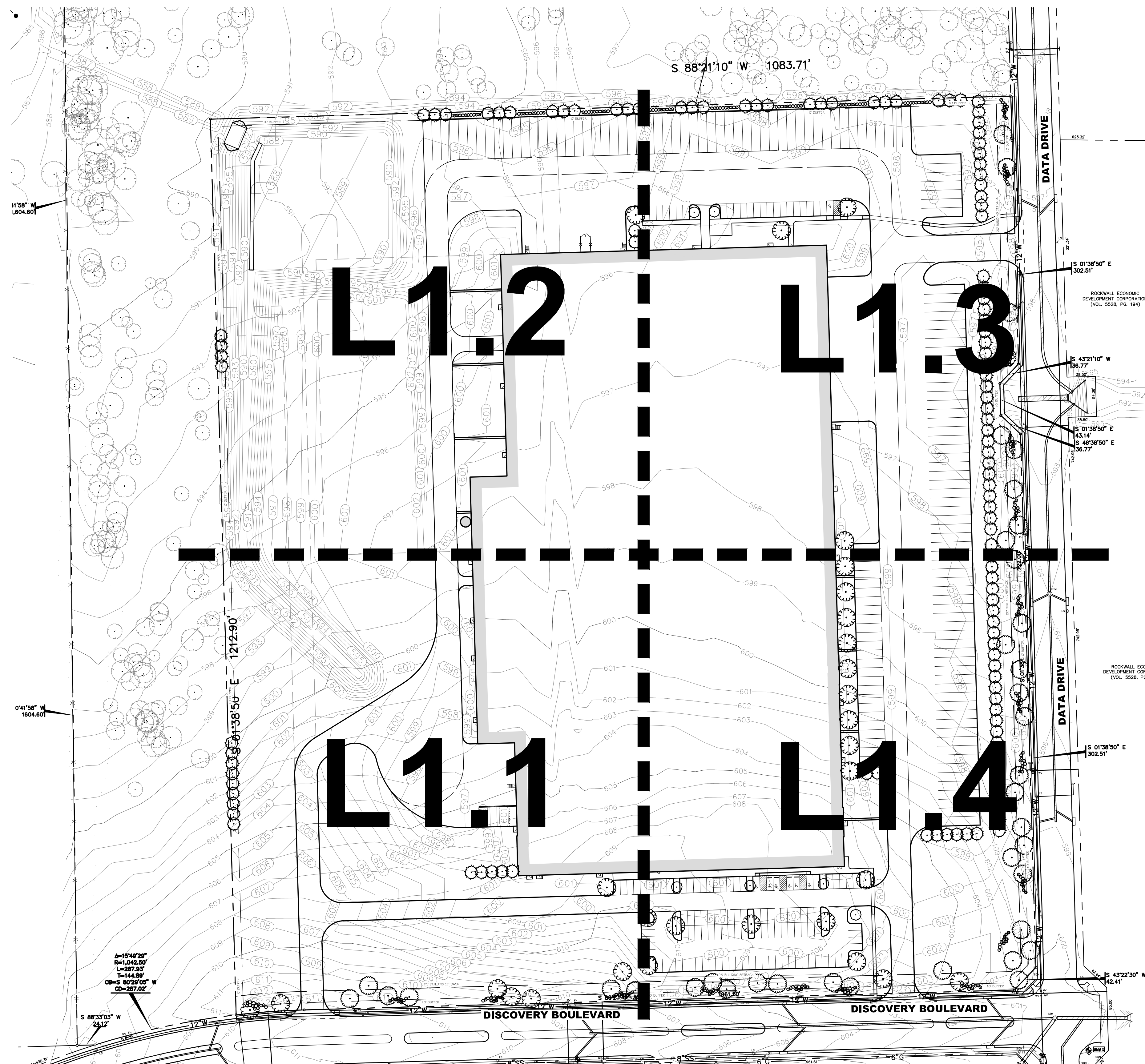
The calculated footcandle levels indicate luminaire performance based on the information provided to Texas Lighting Sales, Inc. We make no claims of compliance with any local or state lighting codes.

No.	Revision	Date
2		06/06/16

Scale: 1"= 50'

Job Name: Pratt Site

Job Location: Rockwall, Texas



SITE DATA TABLE	
ZONING	LI - LIGHT INDUSTRIAL
PROPOSED USE	INDUSTRIAL FACILITY
PARKING PROVIDED	126 REGULAR STALLS
	710 C STALLS
GROSS BUILDING AREA	399,500 SF
BUILDING HEIGHT	40'-1 STORY
IMPERVIOUS AREA	749,922 SF
PERVIOUS AREA	558,403 SF
LOT AREA	30.035 ACRES - 1,208,325 SF

IRRIGATION NOTE:
PERMANENT IRRIGATION WILL BE DESIGNED/PROVIDED THAT MEETS THE CITY OF ROCKWALL UNIFIED DEVELOPMENT CODE.

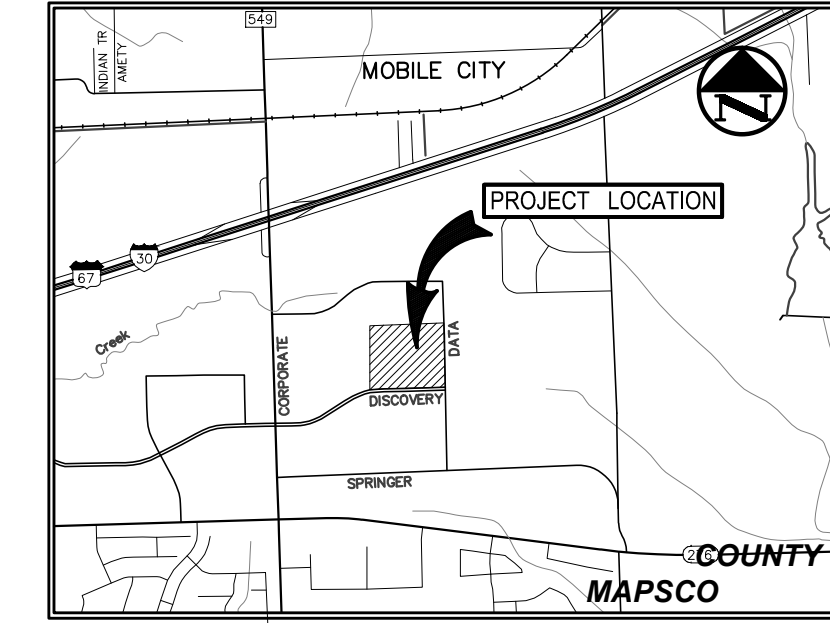
TREE PLANTING NOTE:
NO TREES TO BE PLANTED WITHIN 5' OF ANY UTILITY AND SHRUB/LIGHT POLES MUST BE PLACED 4' BEHIND THE CURB OF 18' PARKING SPACES.

LANDSCAPE CALCULATIONS FOR THE CITY OF ROCKWALL, TX		
CITY REQUIREMENTS	REQUIRED	PROVIDED
REQUIRED LANDSCAPE		
LIGHT INDUSTRIAL REQUIRED LANDSCAPE - 10% OF SITE	30.035 AC x 10% = 3.003 AC (130,811 SF)	558,403 SF
TREE MITIGATION		
576 CALIPER INCHES TO BE MITIGATED	576 CALIPER INCHES	576 CALIPER INCHES (192 3" CAL TREES)
NORTH PARKING LOT LANDSCAPE (24 SPACES)	14,692 x 5% = 734 SF	1,635 SF
PARKING LOT LANDSCAPE (14,692 SF)	3 CANOPY TREES	3 CANOPY TREES & 2 ORNAMENTAL TREES
SOUTH PARKING LOT LANDSCAPE (109 SPACES)		
PARKING LOT LANDSCAPE (38,108 SF)	38,108 SF x 5% = 1,905 SF	3,552 SF
PARKING LOT TREES (1 PER 10 STALLS)	109 STALLS / 10 = 11 CANOPY TREES	8 CANOPY TREES & 4 ORNAMENTAL TREES
STREET LANDSCAPE		
DATA DRIVE - 202 LF		
BUFFER	10' BUFFER	10' BUFFER
STREET TREES (1 PER 50 LF)	1202 / 50 LF = 24 TREES	24 TREES
DISCOVERY BLVD - 1,213 LF		
BUFFER	10' BUFFER	10' BUFFER
STREET TREES (1 PER 50 LF)	1213 / 50 LF = 24 TREES	24 TREES
LOADING DOCK/TRUCK PARKING SCREENING		
LOADING AND DOCK/TRUCK PARKING SCREENING	6 SCREENING	BERMING AND TREE SCREENING
DETENTION BASIN LANDSCAPE		
DETENTION BASIN TREE (1 PER 750 SF)	50,911 SF / 750 = 68 TREES	NONE - VARIANCE REQUESTED

- PLANTING GENERAL NOTES**
- ALL PLANTS SHALL BE SET OUT FOR APPROVAL BY THE OWNER'S REPRESENTATIVE PRIOR TO INSTALLATION.
 - FINE GRADING SHALL BE PERFORMED IN ALL AREAS TO BE LANDSCAPED. FINE GRADING SHALL INCLUDE THE REMOVAL OF DEBRIS, ROCKS, ETC. FROM THE SITE AND INSURE POSITIVE DRAINAGE IN ALL AREAS.
 - THE CONTRACTOR SHALL LOCATE ALL UTILITIES AND EASEMENTS IN THE FIELD PRIOR TO COMMENCEMENT OF WORK. CONTRACTOR IS RESPONSIBLE FOR ANY DAMAGE TO UTILITIES DURING THE COURSE OF CONSTRUCTION.
 - WRITTEN DIMENSIONS SHALL GOVERN OVER SCALED DIMENSIONS.
 - IT IS PREFERABLE THAT NO TREE BE STAKED. HOWEVER, CONDITIONS AND PLANT MATERIAL SIZE MAY NECESSITATE STAKING. THE OWNER'S REP SHALL DETERMINE IF SUPPORT IS NEEDED AND SHALL DIRECT THE CONTRACTOR ACCORDINGLY.
 - THE CONTRACTOR SHALL REFER TO THE SPECIFICATIONS FOR ADDITIONAL INFORMATION AND REQUIREMENTS ASSOCIATED WITH THE LANDSCAPE AND ACCESSORIES.
 - ALL PLANT MATERIALS SHALL MEET ANSI Z66.1 STANDARDS FOR CALIPER, HEIGHT AND ROOT BALL SIZE. ANY MATERIALS THAT DO NOT MEET OR EXCEED SUCH STANDARDS SHALL BE REJECTED AND REPLACED AT THE CONTRACTOR'S EXPENSE.
 - BALLED AND BURLAPPED TREES SHALL HAVE THE TOP HALF OF THE WIRE BASKET REMOVED. THE BURLAP SHALL BE REMOVED TO THE GREATEST EXTENT POSSIBLE USING A KNIFE TO CUT AND REMOVE THE BOTTOM HALF UNDER THE WIRE BASKET THAT REMAINS.

LANDSCAPE TABLE							
LARGE TREES	CODE	QTY	BOTANICAL NAME	CONT	CAL	SIZE	
	JE2	118	JUNIPERUS VIRGINIANA Eastern Red Cedar SINGLE, STRAIGHT LEADER, MATCHING	CONTAINER	3" CAL	10'-12" H X 5'-6" W	
	QV	39	QUERCUS VIRGINIANA Southern Live Oak SINGLE, STRAIGHT LEADER, MATCHING	CONTAINER	3" CAL	10'-12" H X 5'-6" W	
	UC	29	ULMUS CRASSIFOLIA Cedar Elm SINGLE, STRAIGHT LEADER, MATCHING	CONTAINER	3" CAL	10'-12" H X 5'-6" W	
ORNAMENTAL TREES	CODE	QTY	BOTANICAL NAME	CONT	CAL	SIZE	
	ILD	6	ILEX DECIDUA Possumhaw Holly MULTI-LEADER, FULL, MATCHING	CONTAINER	3" CAL	8" H X 4" W	
SHRUBS	CODE	QTY	BOTANICAL NAME	SIZE			SPACING
	LS	151	LEUCOPHYLLUM FRUTESCENS "SILVERADO" Texas Sage	3 GAL			48" o.c.
	RO	60	ROSMARINUS OFFICINALIS "TUSCAN BLUE" Tuscan Blue Rosemary	3 GAL			48" o.c.
ORNAMENTAL GRASSES	CODE	QTY	BOTANICAL NAME	SIZE			SPACING
	MUL	60	MUHLENBERGIA LINDHEIMERI Lindheimer's Muhly FULL, MATCHING	3 GAL			48" o.c.
GROUND COVERS	CODE	QTY	BOTANICAL NAME	CONT			SPACING
	NH	231,749 SF	NATIVE SEED MIX-HYDROSEED	HYDROSEED			
SOD/SEED	CODE	QTY	BOTANICAL NAME	CONT			SPACING
	CDS	108,564 SF	CYNODON DACTYLON Bermuda Grass SOLID, ROLLED TIGHT, SAND FILLED JOINTS, 100% WEED, PEST AND DISEASE FREE	SOD			
	CD	225,362 SF	CYNODON DACTYLON-HYDROSEED Bermuda Grass	HYDROSEED			
HARDSCAPE	MATERIAL						
	STEEL EDGING						

LANDSCAPE VARIANCE REQUEST:
1. DETENTION BASIN TREE REQUIREMENT



VICINITY MAP
(NOT TO SCALE)

OWNER:
ROCKWALL ECONOMIC DEVELOPMENT CORPORATION
1610 OBSERVATION TRAIL
ROCKWALL, TX 75032
972.772.0025

ENGINEER:
PACHECO KOCH
7557 RAMBLER ROAD, SUITE 1400
DALLAS, TEXAS 75231
ATTN: CHET LEUGERS, P.E.
PHONE: (972) 235-3031

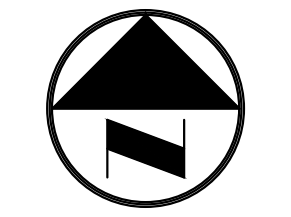
INTERIM REVIEW
THESE DOCUMENTS ARE INTENDED FOR INTERIM REVIEW ONLY AND NOT FOR REGULATORY APPROVAL/PERMITTING OR CONSTRUCTION.
REGISTERED LANDSCAPE ARCHITECT
CHRISTOPHER J. TAYLOR
TEXAS REGISTRATION NUMBER 2969

NO.	DATE	REVISION

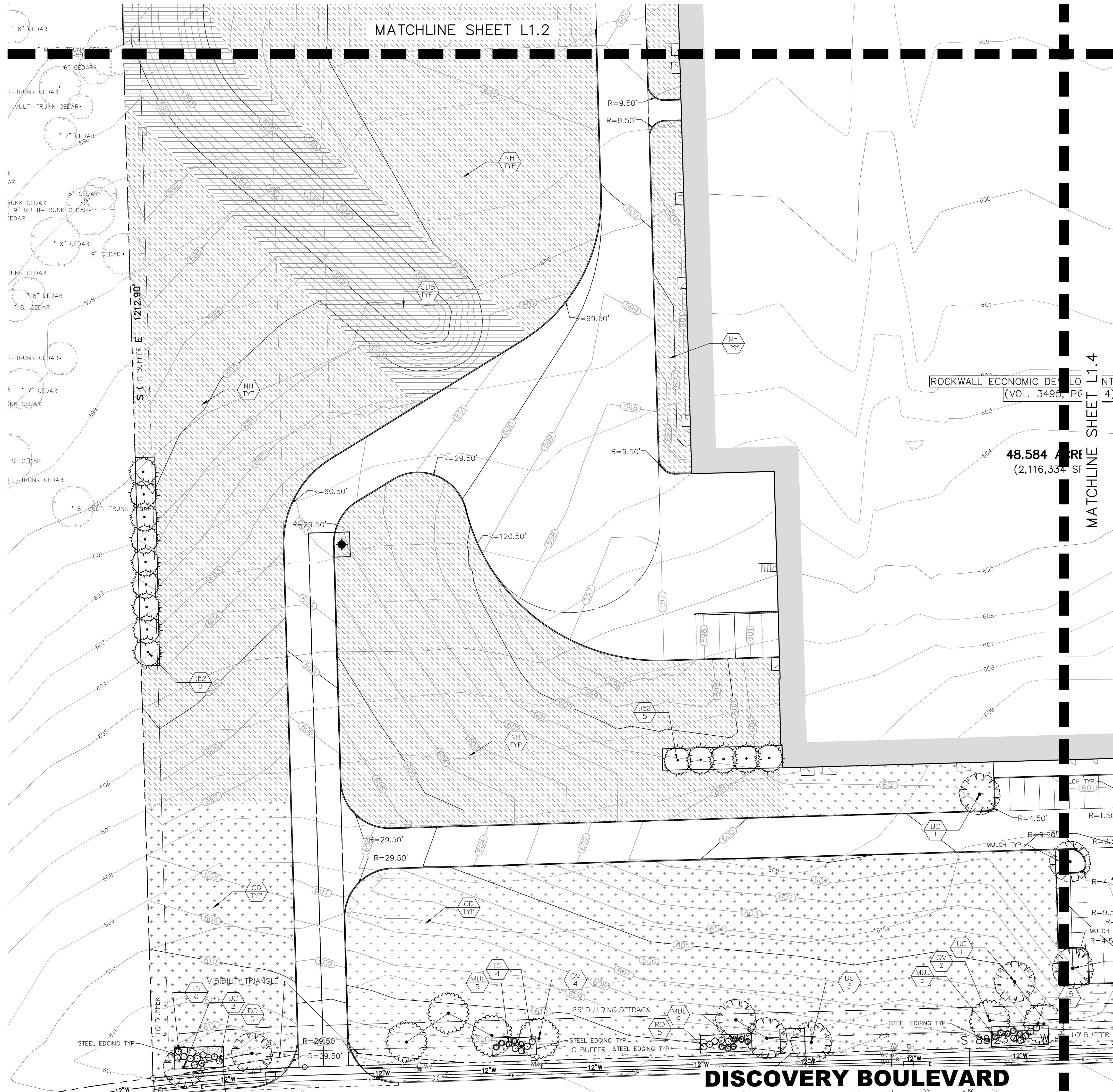
Pacheco Koch
6100 WESTERN PLACE, SUITE 1001
FORT WORTH, TX 76107 817.412.7155
TX REG. ENGINEERING FIRM F-14439
TX REG. SURVEYING FIRM LS-10193824

OVERALL SITE PLAN
ROCKWALL MANUFACTURING FACILITY
NORTHWEST CORNER OF DISCOVERY
BOULEVARD & DATA DRIVE
CITY OF ROCKWALL, ROCKWALL COUNTY, TEXAS

DESIGN	DRAWN	DATE	SCALE	NOTES	FILE	NO.
CJT	CRR	MAY 2016				L1.0



0 15 30 60 90
GRAPHIC SCALE IN FEET



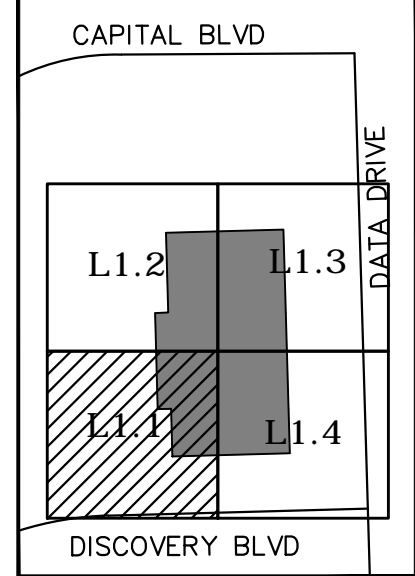
MATCHLINE SHEET L1.2

MATCHLINE SHEET L1.4

ROCKWALL ECONOMIC DEVELOPMENT CENTER
(VOL. 3495, PC 14)

48,584 AREA
(2,116,337 SF)

SHEET KEY MAP
(NOT TO SCALE)



LANDSCAPE TABLE

LARGE TREES	CODE	QTY	BOTANICAL NAME	CONT	CAL	SIZE
	JE2	118	JUNIPERUS VIRGINIANA Eastern Red Cedar SINGLE, STRAIGHT LEADER, MATCHING	CONTAINER	3" CAL	10'-12" H X 5'-6" W
	QV	39	QUERCUS VIRGINIANA Southern Live Oak SINGLE, STRAIGHT LEADER, MATCHING	CONTAINER	3" CAL	10'-12" H X 5'-6" W
	UC	29	ULMUS CRASSIFOLIA Cedar Elm SINGLE, STRAIGHT LEADER, MATCHING	CONTAINER	3" CAL	10'-12" H X 5'-6" W
ORNAMENTAL TREES	CODE	QTY	BOTANICAL NAME	CONT	CAL	SIZE
	ILD	6	ILEX DECIDUA Possumhaw Holly MULTI-LEADER, FULL, MATCHING	CONTAINER	3" CAL	8' H X 4' W
SHRUBS	CODE	QTY	BOTANICAL NAME	SIZE	SPACING	
	LS	151	LEUCOPHYLLUM FRUTESCENS 'SILVERADO' Texas Sage	3 GAL	48" o.c.	
	RO	60	ROSMARINUS OFFICINALIS 'TUSCAN BLUE' Tuscan Blue Rosemary	3 GAL	48" o.c.	
ORNAMENTAL GRASSES	CODE	QTY	BOTANICAL NAME	SIZE	SPACING	
	MUL	60	MUHLENBERGIA LINDHEIMERI Lindheimer's Muhly FULL, MATCHING	3 GAL	48" o.c.	
GROUND COVERS	CODE	QTY	BOTANICAL NAME	CONT	SPACING	
	NH	231,749 SF	NATIVE SEED MIX-HYDROSEED	HYDROSEED		
SOD/SEED	CODE	QTY	BOTANICAL NAME	CONT	SPACING	
	CD5	108,564 SF	CYNODON DACTYLON Bermuda Grass SOLID, ROLLED TIGHT, SAND FILLED JOINTS, 100% WEED, PEST AND DISEASE FREE	SOD		
	CD	225,362 SF	CYNODON DACTYLON-HYDROSEED Bermuda Grass	HYDROSEED		
HARDSCAPE	MATERIAL					
	STEEL EDGING					

INTERIM REVIEW
THESE DOCUMENTS ARE INTENDED FOR
INTERNAL REVIEW ONLY AND NOT FOR
REGULATORY APPROVAL/PERMITTING, OR
CONSTRUCTION.
REGISTERED LANDSCAPE ARCHITECT
CHRISTOPHER J. TAYLOR
TEXAS REGISTRATION NUMBER 2969

NO.	DATE	REVISION

6100 WESTERN PLACE, SUITE 1001
FORT WORTH, TX 76107 817.412.7155
TX REG. ENGINEERING FIRM F-14439
TX REG. SURVEYING FIRM LS-10193824

Pacheco Koch

LANDSCAPE PLAN
ROCKWALL MANUFACTURING FACILITY
NORTHWEST CORNER OF DISCOVERY
BOULEVARD & DATA DRIVE
CITY OF ROCKWALL, ROCKWALL COUNTY, TEXAS

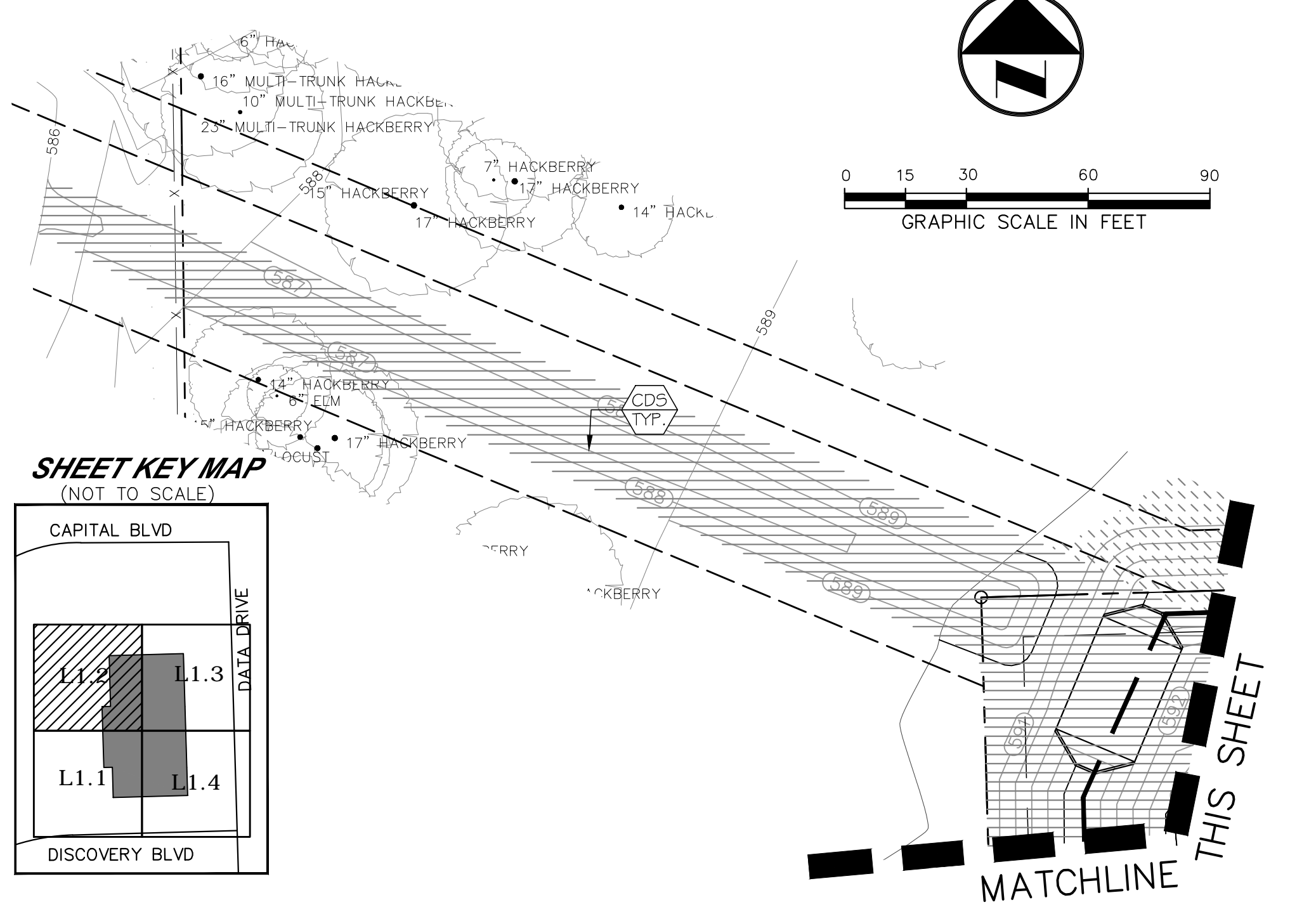
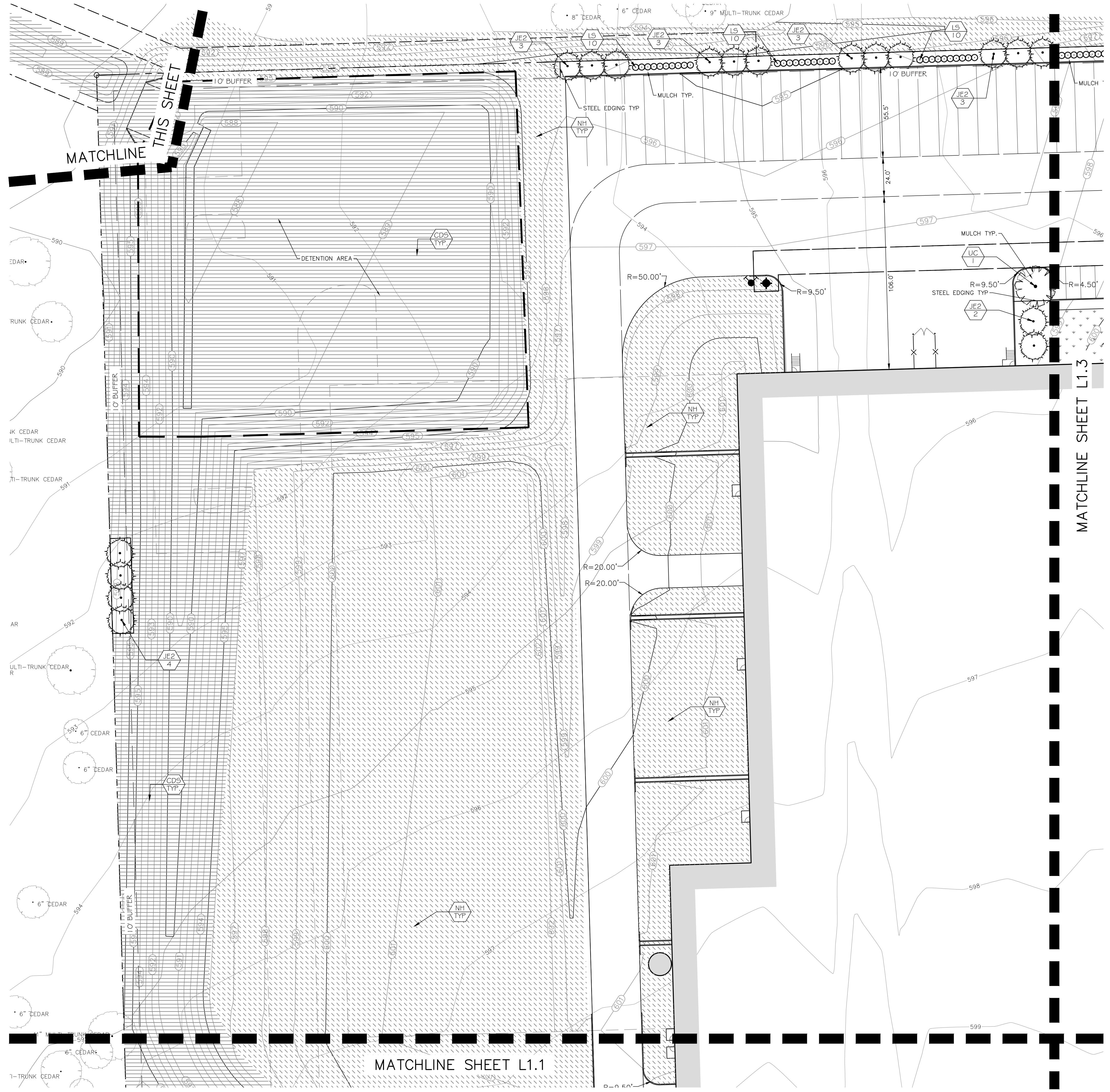
DESIGN	DRAWN	DATE	SCALE	NOTES	FILE	NO.
CJT	CRR	MAY 2016	1"=30'			L1.1

06/07/2016 11:13AM
M:\DWG-37\3782-16.054\DWG\LANDSCAPE_CD 2015\3782-16.054-LP.DWG

ROCKWALL MANUFACTURING FACILITY

Case Number: SP2016-012

L:\KING
 05/07/2016 - 11:24AM
 M:\DWG-37\3782-16.054\DWG\LANDSCAPE_C30_2015\3782-16.054-LP.DWG



LANDSCAPE TABLE					
LARGE TREES					
	JE2	118	JUNIPERUS VIRGINIANA Eastern Red Cedar SINGLE, STRAIGHT LEADER, MATCHING	CONT	3" CAL 10'-12" H X 5'-6" W
	QV	39	QUERCUS VIRGINIANA Southern Live Oak SINGLE, STRAIGHT LEADER, MATCHING	CONT	3" CAL 10'-12" H X 5'-6" W
	UC	29	ULMUS CRASSIFOLIA Cedar Elm SINGLE, STRAIGHT LEADER, MATCHING	CONT	3" CAL 10'-12" H X 5'-6" W
ORNAMENTAL TREES					
	ILD	6	ILEX DECIDUA Possumhaw Holly MULTI-LEADER, FULL, MATCHING	CONT	3" CAL 8" H X 4" W
SHRUBS					
	LS	151	LEUCOPHYLLUM FRUTESCENS 'SILVERADO' Texas Sage	SIZE	3 GAL 48" o.c.
	RO	60	ROSMARINUS OFFICINALIS 'TUSCAN BLUE' Tuscan Blue Rosemary	SIZE	3 GAL 48" o.c.
ORNAMENTAL GRASSES					
	MUL	60	MUHLENBERGIA LINDHEIMERI Lindheimer's Muhly FULL, MATCHING	SIZE	3 GAL 48" o.c.
GROUND COVERS					
	NH	231,749 SF	NATIVE SEED MIX-HYDROSEED	CONT	HYDROSEED
SOD/SEED					
	CDS	108,564 SF	CYNODON DACTYLON Bermuda Grass SOLID, ROLLED TIGHT, SAND FILLED JOINTS, 100% WEED, PEST AND DISEASE FREE	CONT	SOD
	CD	225,362 SF	CYNODON DACTYLON-HYDROSEED Bermuda Grass	CONT	HYDROSEED
HARDSCAPE					
	MATERIAL				
	STEEL EDGING				

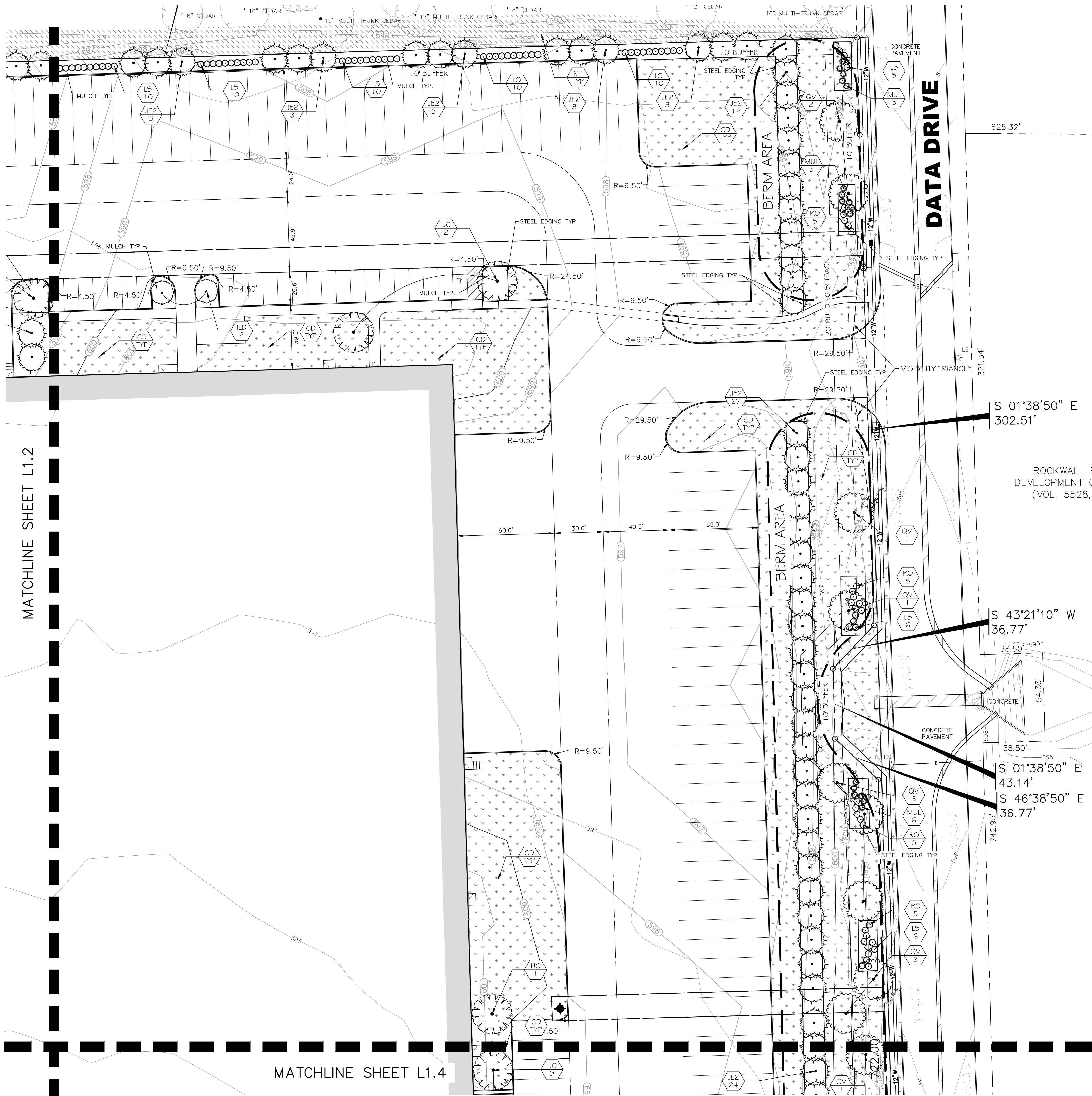
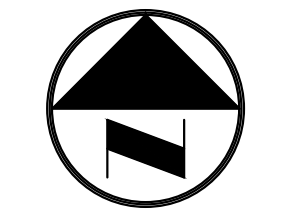
INTERIM REVIEW
 THESE DOCUMENTS ARE INTENDED FOR
 INTERIM REVIEW ONLY AND NOT FOR
 REGULATORY APPROVAL/PERMITTING OR
 CONSTRUCTION.
 REGISTERED LANDSCAPE ARCHITECT
 CHRISTOPHER L. TAYLOR
 TEXAS REGISTRATION NUMBER 2969

NO.	DATE	REVISION

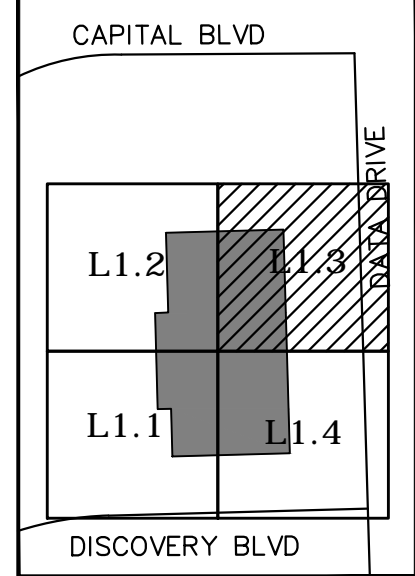
Pacheco Koch 6100 WESTERN PLACE, SUITE 1001
 FORT WORTH, TX 76107 817.412.7155
 TX REG. ENGINEERING FIRM F-14439
 TX REG. SURVEYING FIRM LS-10193824

LANDSCAPE PLAN
ROCKWALL MANUFACTURING FACILITY
NORTHWEST CORNER OF DISCOVERY
BOULEVARD & DATA DRIVE
CITY OF ROCKWALL, ROCKWALL COUNTY, TEXAS

DESIGN	DRAWN	DATE	SCALE	NOTES	FILE	NO.
CJT	CRR	MAY 2016	1"=30'			L1.2



SHEET KEY MAP (NOT TO SCALE)



LANDSCAPE TABLE

LARGE TREES	CODE	QTY	BOTANICAL NAME	CONT	CAL	SIZE
	JE2	118	JUNIPERUS VIRGINIANA Eastern Red Cedar SINGLE, STRAIGHT LEADER, MATCHING	CONTAINER	3"CAL	10'-12"H X 5'-6"W
	QV	39	QUERCUS VIRGINIANA Southern Live Oak SINGLE, STRAIGHT LEADER, MATCHING	CONTAINER	3"CAL	10'-12"H X 5'-6"W
	UC	29	ULMUS CRASSIFOLIA Cedar Elm SINGLE, STRAIGHT LEADER, MATCHING	CONTAINER	3"CAL	10'-12"H X 5'-6"W
ORNAMENTAL TREES	CODE	QTY	BOTANICAL NAME	CONT	CAL	SIZE
	ILD	6	ILEX DECIDUA Possumhaw Holly MULTI-LEADER, FULL, MATCHING	CONTAINER	3"CAL	8' H X 4' W
SHRUBS	CODE	QTY	BOTANICAL NAME	SIZE	SPACING	
	LS	151	LEUCOPHYLLUM FRUTESCENS 'SILVERADO' Texas Sage	3 GAL	48" o.c.	
	RO	60	ROSMARINUS OFFICINALIS 'TUSCAN BLUE' Tuscan Blue Rosemary	3 GAL	48" o.c.	
ORNAMENTAL GRASSES	CODE	QTY	BOTANICAL NAME	SIZE	SPACING	
	MUL	60	MUHLENBERGIA LINDHEIMERI Lindheimer's Muhly FULL, MATCHING	3 GAL	48" o.c.	
GROUND COVERS	CODE	QTY	BOTANICAL NAME	CONT	SPACING	
	NH	231,749 SF	NATIVE SEED MIX-HYDROSEED	HYDROSEED		
SOD/SEED	CODE	QTY	BOTANICAL NAME	CONT	SPACING	
	CD5	108,564 SF	CYNODON DACTYLON Bermuda Grass SOLID, ROLLED TIGHT, SAND FILLED JOINTS, 100% WEED, PEST AND DISEASE FREE	SOD		
	CD	225,362 SF	CYNODON DACTYLON-HYDROSEED Bermuda Grass	HYDROSEED		
HARDSCAPE	MATERIAL					
	STEEL EDGING					

INTERIM REVIEW
THESE DOCUMENTS ARE INTENDED FOR
INTERIM REVIEW ONLY AND NOT FOR
REGULATORY APPROVAL/PERMITTING, OR
CONSTRUCTION.
REGISTERED LANDSCAPE ARCHITECT
CHRISTOPHER J. TAYLOR
TEXAS REGISTRATION NUMBER 2969

MATCHLINE SHEET L1.2

MATCHLINE SHEET L1.4

ROCKWALL E
DEVELOPMENT C
(VOL. 5528,
S 01°38'50" E
302.51'
S 43°21'10" W
36.77'
S 01°38'50" E
43.14'
S 46°38'50" E
36.77'

11:15AM
06/07/2016
M: DWG-37,3782-16,054 DWG LANDSCAPE C3D 2015\3782-16,054-LP.DWG

ROCKWALL MANUFACTURING FACILITY

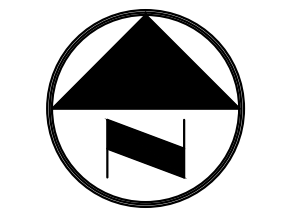
NO.	DATE	REVISION

6100 WESTERN PLACE, SUITE 1001
FORT WORTH, TX 76107 817.412.7155
TX REG. ENGINEERING FIRM F-14439
TX REG. SURVEYING FIRM LS-10193824

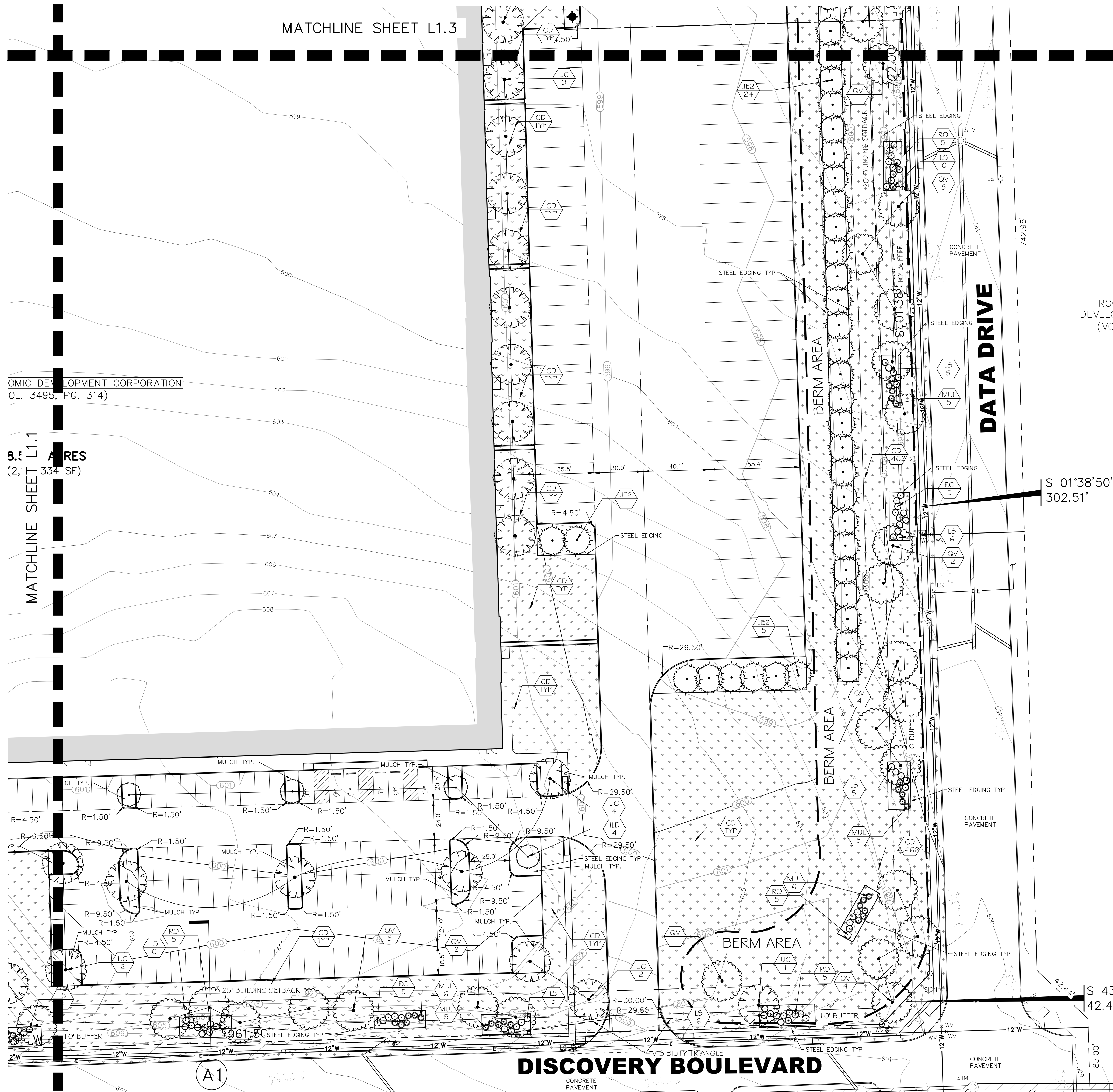
Pacheco Koch

LANDSCAPE PLAN
ROCKWALL MANUFACTURING FACILITY
NORTHWEST CORNER OF DISCOVERY
BOULEVARD & DATA DRIVE
CITY OF ROCKWALL, ROCKWALL COUNTY, TEXAS

DESIGN	DRAWN	DATE	SCALE	NOTES	FILE	NO.
CJT	CRR	MAY 2016	1"=30'			L1.3



MATCHLINE SHEET L1.3

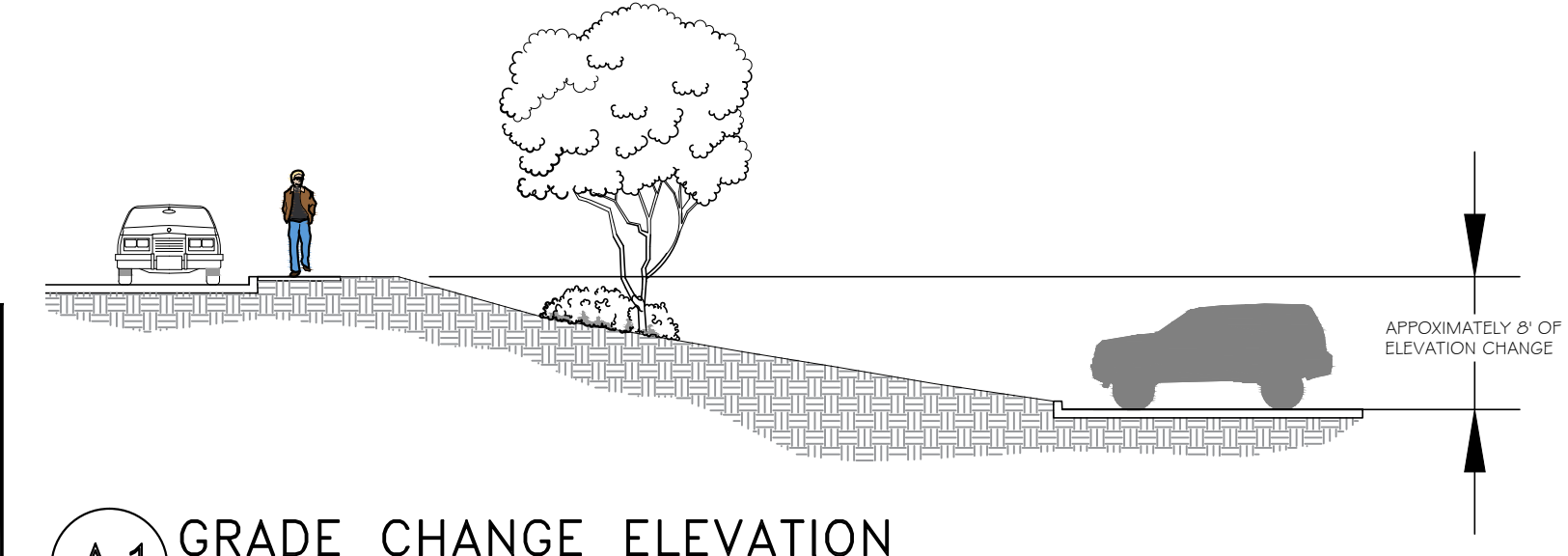
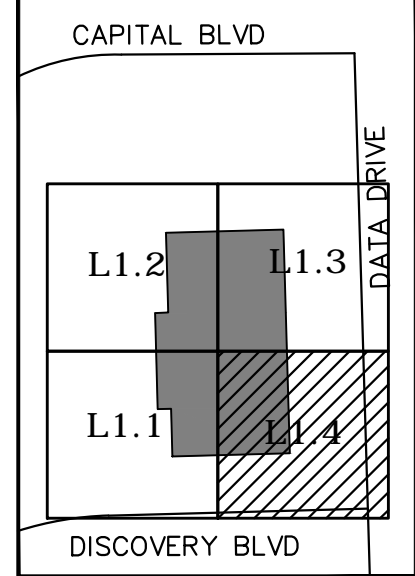


OMIC DEVELOPMENT CORPORATION
OL. 3495, PG. 314)

8.5 ACRES
(2,133,334 SF)

MATCHLINE SHEET L1.1

SHEET KEY MAP
(NOT TO SCALE)



A1 GRADE CHANGE ELEVATION
(NOT TO SCALE)

LANDSCAPE TABLE

LARGE TREES	CODE	QTY	BOTANICAL NAME	CONT	CAL	SIZE
	JE2	118	JUNIPERUS VIRGINIANA Eastern Red Cedar SINGLE, STRAIGHT LEADER, MATCHING	CONTAINER	3"CAL	10'-12"H X 5'-6"W
	QV	39	QUERCUS VIRGINIANA Southern Live Oak SINGLE, STRAIGHT LEADER, MATCHING	CONTAINER	3"CAL	10'-12"H X 5'-6"W
	UC	29	ULMUS CRASSIFOLIA Cedar Elm SINGLE, STRAIGHT LEADER, MATCHING	CONTAINER	3"CAL	10'-12"H X 5'-6"W
ORNAMENTAL TREES	CODE	QTY	BOTANICAL NAME	CONT	CAL	SIZE
	ILD	6	ILEX DECIDUA Possumhaw Holly MULTI-LEADER, FULL, MATCHING	CONTAINER	3"CAL	8' H X 4' W
SHRUBS	CODE	QTY	BOTANICAL NAME	SIZE	SPACING	
	LS	151	LEUCOPHYLLUM FRUTESCENS "SILVERADO" Texas Sage	3 GAL	48" o.c.	
	RO	60	ROSMARINUS OFFICINALIS "TUSCAN BLUE" Tuscan Blue Rosemary	3 GAL	48" o.c.	
ORNAMENTAL GRASSES	CODE	QTY	BOTANICAL NAME	SIZE	SPACING	
	MUL	60	MUHLENBERGIA LINDHEIMERI Lindheimer's Muhly FULL, MATCHING	3 GAL	48" o.c.	
GROUND COVERS	CODE	QTY	BOTANICAL NAME	CONT	SPACING	
	NH	231,749 SF	NATIVE SEED MIX-HYDROSEED	HYDROSEED		
SOD/SEED	CODE	QTY	BOTANICAL NAME	CONT	SPACING	
	CD5	108,564 SF	CYNODON DACTYLON Bermuda Grass SOLID, ROLLED TIGHT, SAND FILLED JOINTS, 100% WEED, PEST AND DISEASE FREE	SOD		
	CD	225,362 SF	CYNODON DACTYLON-HYDROSEED Bermuda Grass	HYDROSEED		
HARDSCAPE	MATERIAL					
	STEEL EDGING					

INTERIM REVIEW
THESE DOCUMENTS ARE INTENDED FOR
INTERNAL REVIEW ONLY AND NOT FOR
REGULATORY APPROVAL/PERMITTING, OR
CONSTRUCTION.
REGISTERED LANDSCAPE ARCHITECT
CHRISTOPHER J. TAYLOR
TEXAS REGISTRATION NUMBER 2969

NO.	DATE	REVISION

Pacheco Koch
6100 WESTERN PLACE, SUITE 1001
FORT WORTH, TX 76107 817.412.7155
TX REG. ENGINEERING FIRM F-14439
TX REG. SURVEYING FIRM LS-10193824

LANDSCAPE PLAN
ROCKWALL MANUFACTURING FACILITY
NORTHWEST CORNER OF DISCOVERY
BOULEVARD & DATA DRIVE
CITY OF ROCKWALL, ROCKWALL COUNTY, TEXAS

DESIGN	DRAWN	DATE	SCALE	NOTES	FILE	NO.
CJT	CRR	MAY 2016	1"=30'			L1.4

06/07/2016 11:17AM
M:\DWG-37\3782-16.054\DWG\LANDSCAPE CBD 2015\3782-16.054-LP.DWG

ROCKWALL MANUFACTURING FACILITY