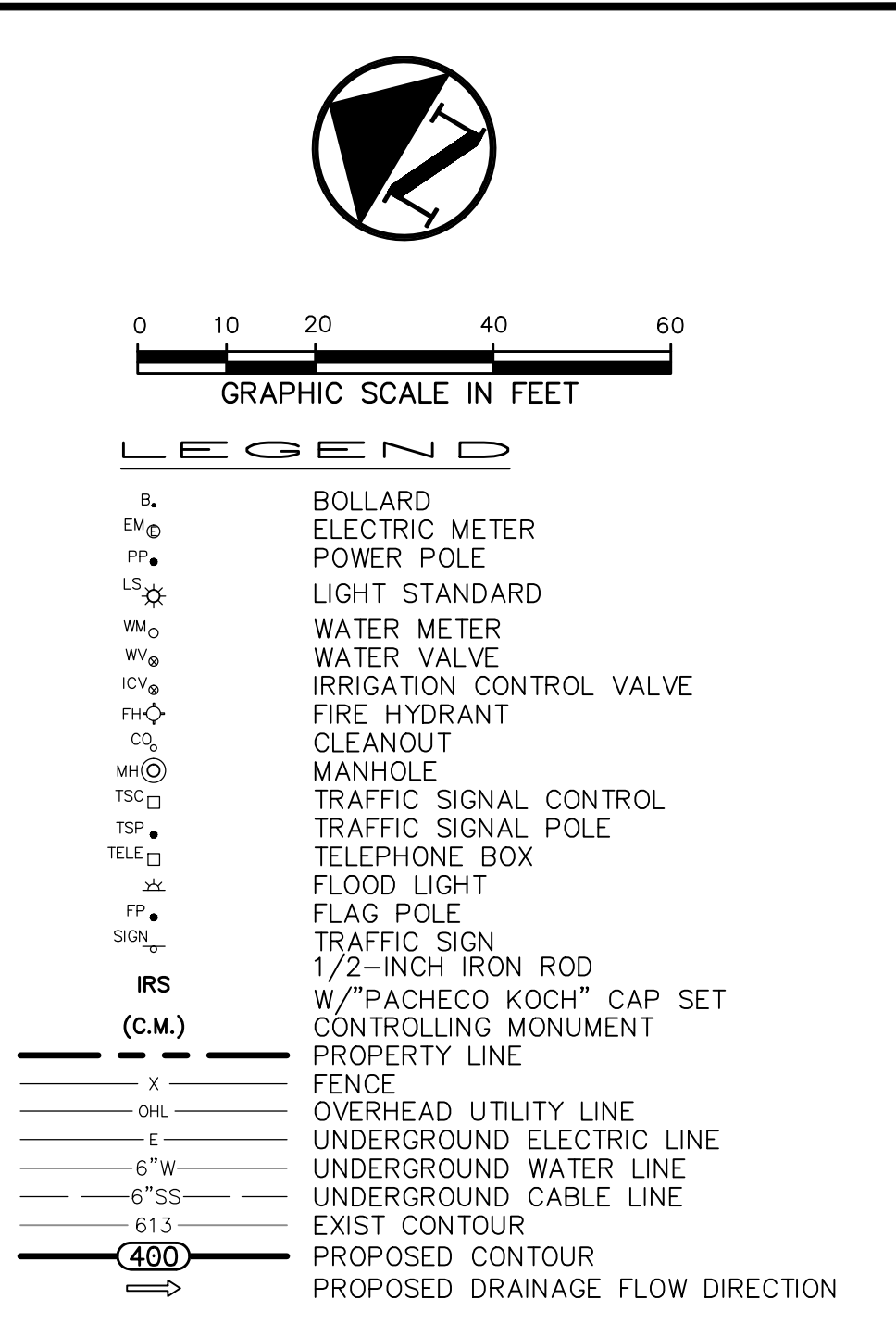
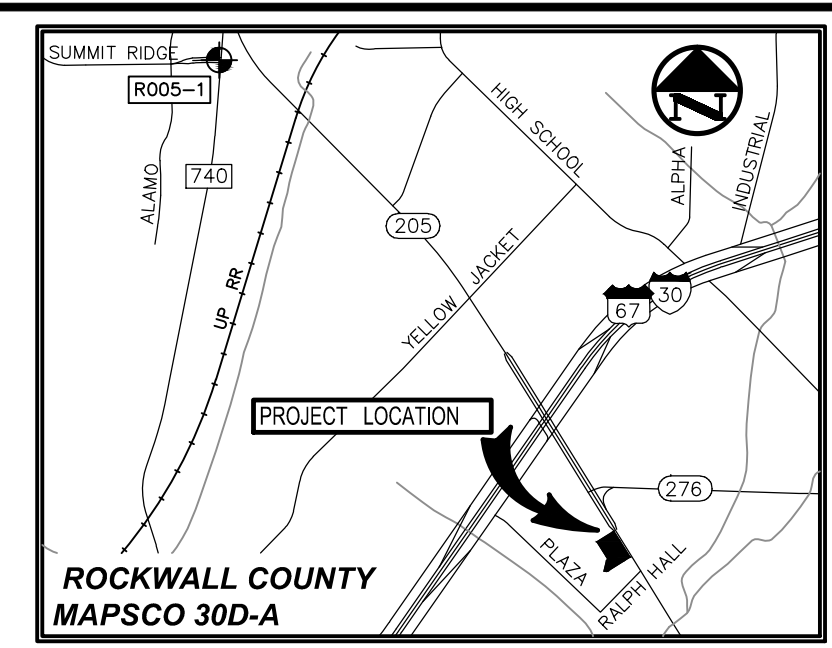
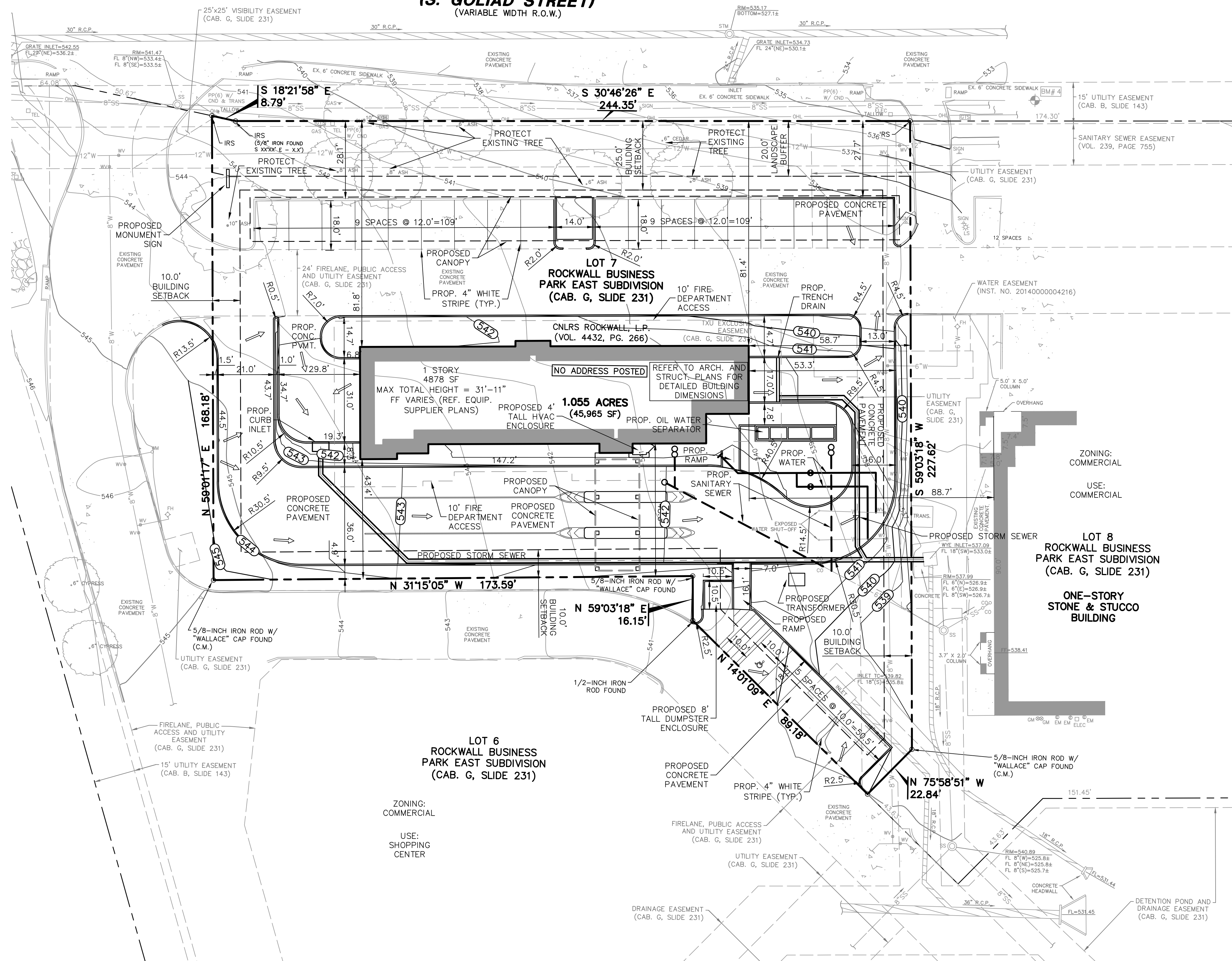


STATE HIGHWAY NO. 205 (S. GOLIAD STREET) (VARIABLE WIDTH R.O.W.)



ALL DIMENSIONS ARE TO BACK-OF-CURB UNLESS OTHERWISE NOTED.

SITE PLAN NOTES:

- A SEPARATE SIGN PERMIT WILL BE REQUIRED FOR ALL SIGNS.
- THE INTENT OF THIS PLAN IS TO SHOW THE CONCEPTUAL DRAINAGE DESIGN FOR THE PROPOSED PROJECT AS PART OF THE SITE PLAN APPROVAL PROCESS ONLY AND SHALL NOT BE CONSTRUCTED AS A FINAL DESIGN.
- THE LIGHT LEVELS ALONG ALL PROPERTY LINES AND STREET FRONTAGES MUST BE 0.20FC OR LESS.
- SUBJECT PROPERTY IS SHOWN ON THE NATIONAL FLOOD INSURANCE PROGRAM FLOOD INSURANCE RATE MAP FOR ROCKWALL COUNTY, TEXAS AND INCORPORATED AREAS. MAP NO. 485970040L, COMMUNITY-PANEL NO. 480547 0040 L, EFFECTIVE DATE: SEPTEMBER 26, 2008. ALL OF THE SUBJECT PROPERTY IS SHOWN TO BE LOCATED IN ZONE "X" ON SAID MAP. THE LOCATION OF THE SAID FLOODZONES IS BASED ON SAID MAP, IS APPROXIMATE AND IS NOT LOCATED ON THE GROUND. RELEVANT ZONES ARE DEFINED ON SAID PAM AS FOLLOWS:

ZONE "X" - OTHER AREAS: AREAS DETERMINED TO BE OUTSIDE 500-YEAR FLOODPLAIN.

- PROPOSED USE:**
CAR WASH
- GROSS BUILDING AREA:**
CAR WASH: 4878 SF
NUMBER OF STORIES: 1
- BUILDING HEIGHT:**
MAX BUILDING HEIGHT = 31'-11"
- PARKING REQUIRED:**
PARKING RATIO = 1 SPACE PER 250 SF OF BUILDING
TOTAL REQUIRED = 20 SPACES
- PARKING PROVIDED:**
PROPOSED REGULAR PARKING = 23 SPACES
PROPOSED H.C. PARKING = 1 SPACE
TOTAL PROVIDED = 23 + 1 = 24 SPACES
- SITE COVERAGE:**
TOTAL SITE 45,965 SF (1.055 AC)
BUILDING 4878 SF (0.112 AC)
PAVEMENT 24,969 SF (0.573 AC)
LANDSCAPE 15,954 SF (0.366 AC)

BUILDING COVERAGE 10.6% < 60.0% MAX.
PAVEMENT COVERAGE 54.3%
LANDSCAPE COVERAGE 34.7%
PERCENT IMPERVIOUS 64.9% < 85.0%-90.0% MAX.
- ZONING:**
COMMERCIAL
SH 205 OVERLAY DISTRICT

PRELIMINARY
NOT FOR CONSTRUCTION
THIS DOCUMENT IS ISSUED FOR THE PURPOSE OF SCHEMATIC REVIEW ONLY AND IS NOT INTENDED FOR PERMITTING, BIDDING, OR CONSTRUCTION PURPOSES.
PLANS PREPARED UNDER THE DIRECT SUPERVISION OF A. GREGORY GERBIG, P.E. TEXAS REGISTRATION NO. 118740
DATE: 12/01/2015

ISSUED FOR PRELIMINARY PRICING PURPOSES ONLY
(SUBJECT TO REVISION PRIOR TO CONSTRUCTION)
THESE DOCUMENTS HAVE BEEN PREPARED BY THE ENGINEER WITH THE INTENT OF COMPLYING WITH ALL CITY STANDARD REQUIREMENTS. THESE DOCUMENTS HAVE NOT BEEN APPROVED AND RELEASED FOR CONSTRUCTION BY THE CITY AS OF THIS DATE AND, THEREFORE, REVISIONS MAY BE REQUIRED PRIOR TO CONSTRUCTION. BY ANY USE OF THESE DOCUMENTS, THE USER AFFIRMS THEIR UNDERSTANDING OF THE PRELIMINARY STATUS OF THE PLANS AND THE POTENTIAL FOR REVISION PRIOR TO ANY CONSTRUCTION.

NO.	DATE	REVISION

Pacheco Koch
7557 RAMBLER ROAD, SUITE 1400
DALLAS, TX 75231 972.235.3031
TX REG. ENGINEERING FIRM F-14439
TX REG. SURVEYING FIRM LS-10193805

SITE PLAN
ROCKWALL CAR WASH
LOT 7
ROCKWALL BUSINESS PARK EAST
CITY OF ROCKWALL, ROCKWALL COUNTY, TEXAS

DESIGN	DRAWN	DATE	SCALE	NOTES	FILE	NO.
AGG	ADR	12/01/15	1"=20'			SP

Case No. SP2015-024

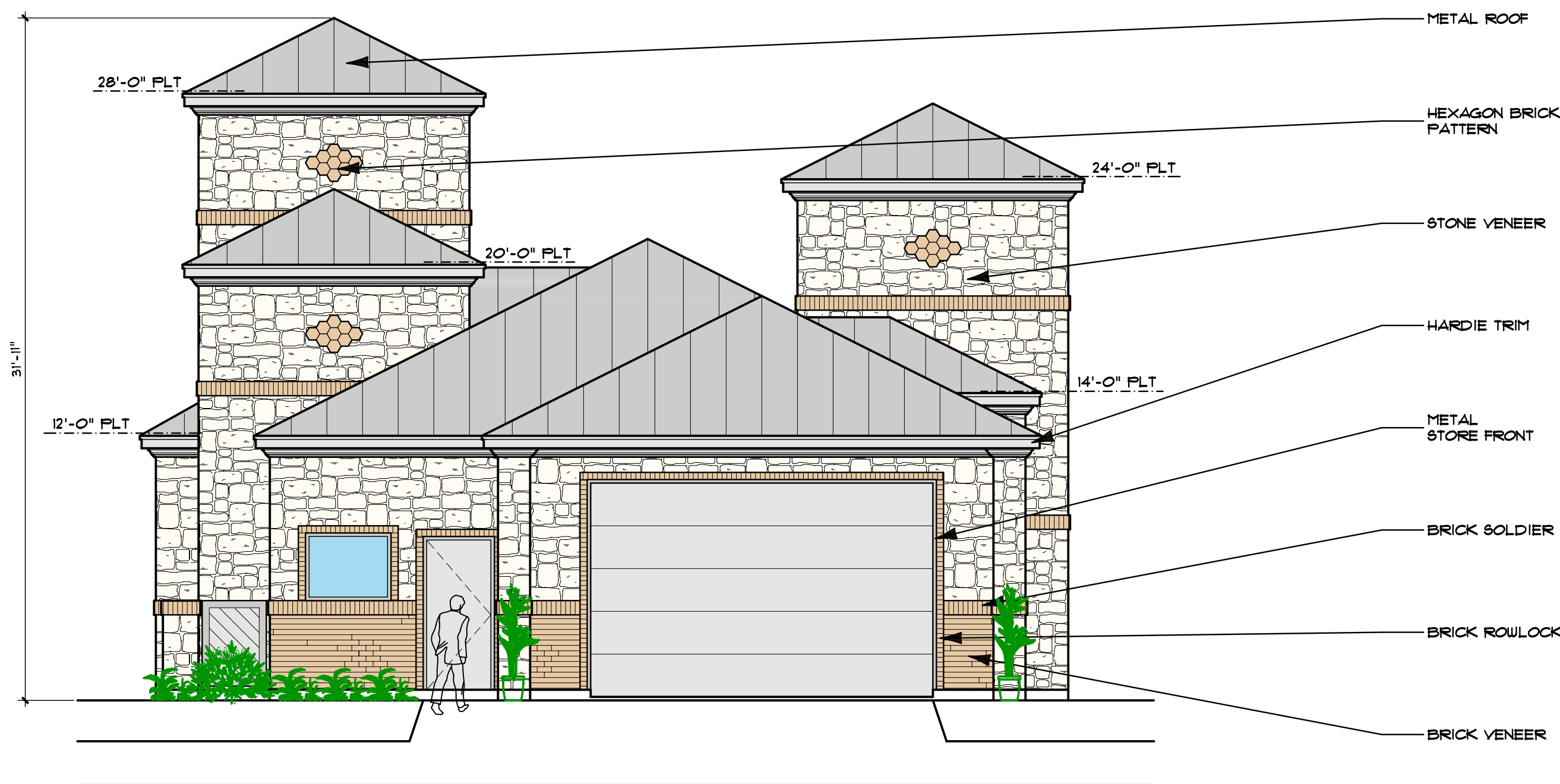
DESIGNER:
HERMONAT ESTIMATING & DESIGN
2340 E. TRINITY MILLS, SUITE 300
CARROLLTON, TEXAS 75006
ATTN: DAVID HERMONAT
PHONE: 972-478-4388

ENGINEER:
PACHECO KOCH
7557 RAMBLER ROAD, SUITE 1400
DALLAS, TEXAS 75231
ATTN: GREG GERBIG
PHONE: (972) 235-3031

DEVELOPER/OWNER:
EMERGE ENTERPRISES
3005 JUSTIN ROAD
FLOWER MOUND, TEXAS 75028
ATTN: JAMES BENTON
PHONE: (972) 965-4323

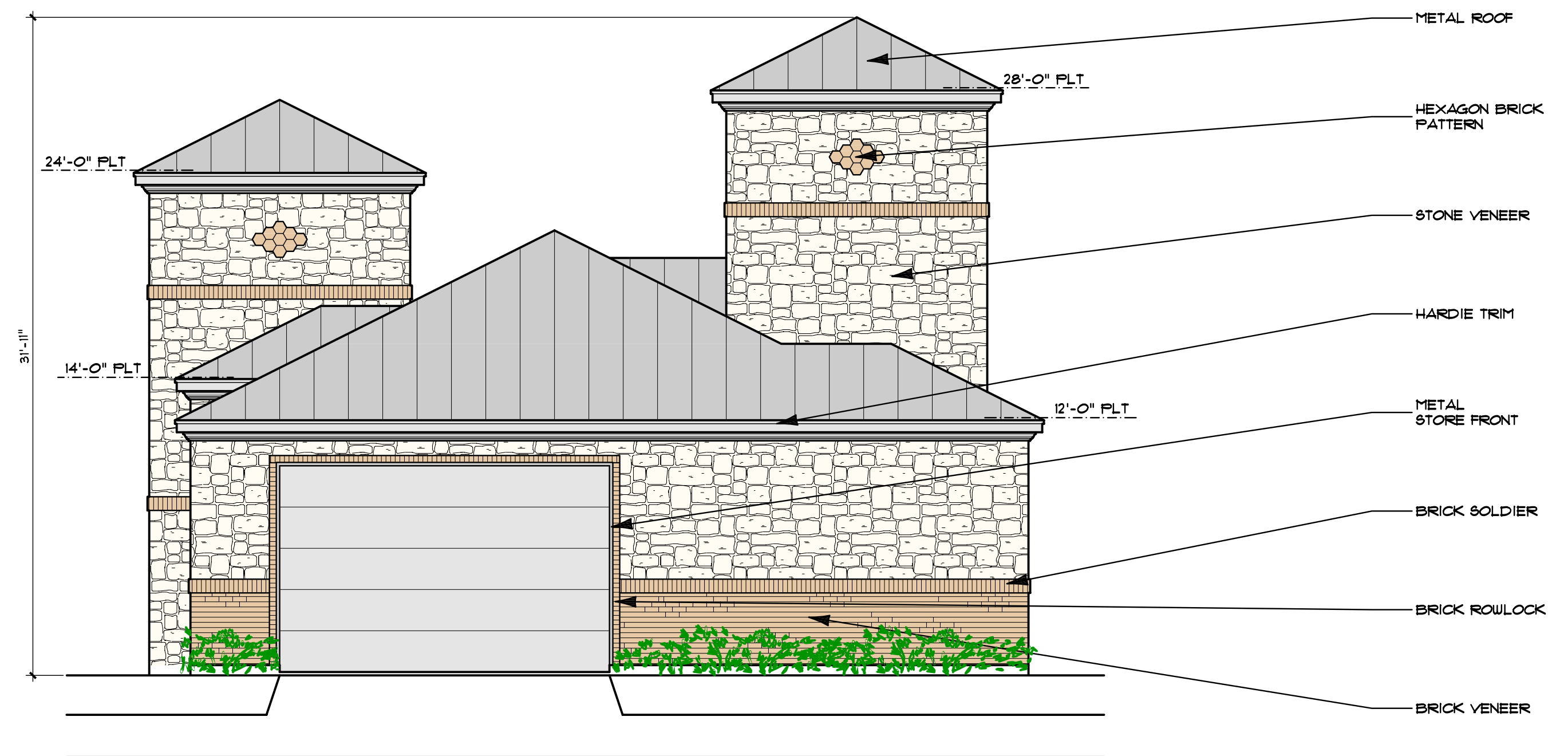
AREWOLDS 12/1/2015 3:31 PM M:\JWC-215\2583-15.366\DWG\CIVIL C.3D 2015\2583-15.366SP.DWG

ROCKWALL CAR WASH



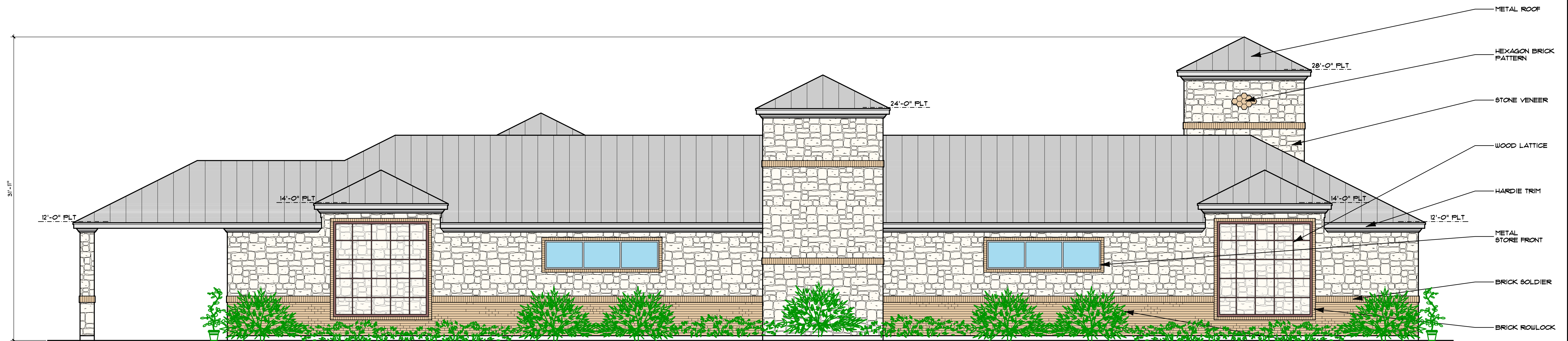
SOUTH ELEVATION SCALE 3/16"=1'-0"

BRICK	25 SF	23%
STONE	280 SF	77%
TOTAL	365 SF	100%



NORTH ELEVATION SCALE 3/16"=1'-0"

BRICK	122 SF	24%
STONE	506 SF	71%
TOTAL	428 SF	100%



EAST ELEVATION SCALE 3/16"=1'-0"

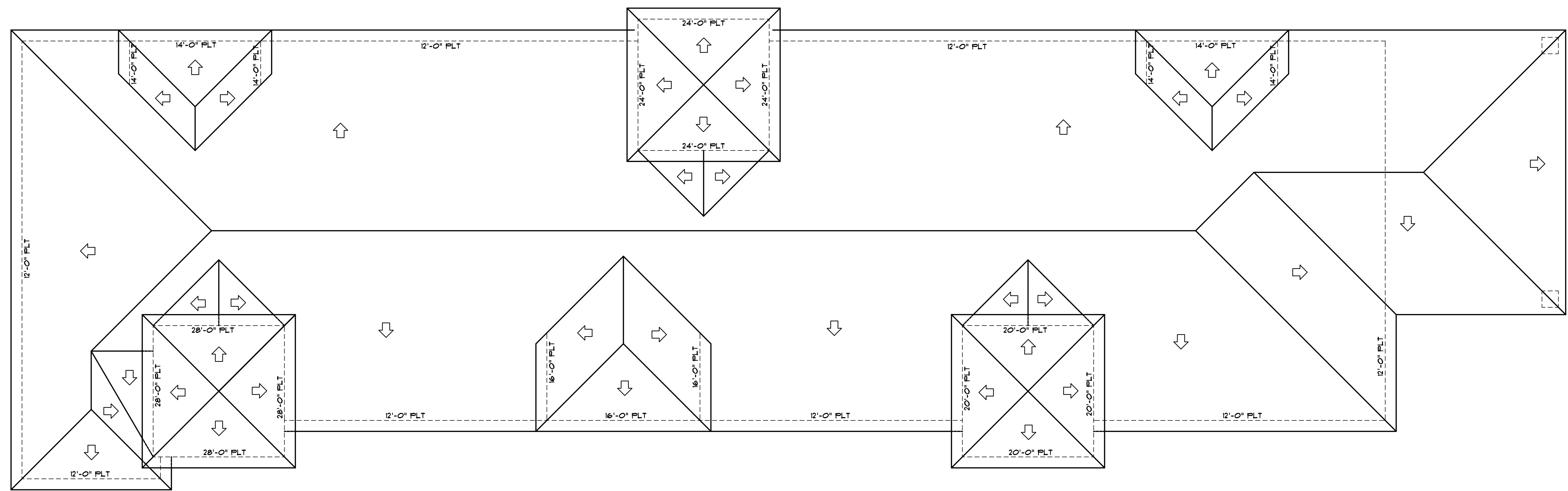
BRICK	540 SF	37%
STONE	938 SF	63%
TOTAL	1478 SF	100%

BUILDER:

DATE: 1/30/15
 REVISED:

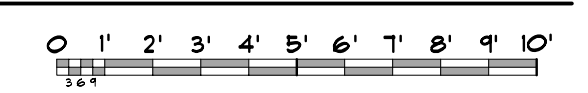
SHEET:

A2



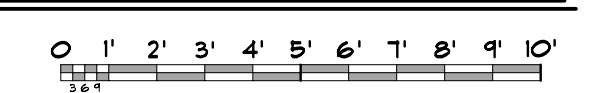
ROOF PLAN

SCALE 3/16" = 1'-0"



WEST ELEVATION

SCALE 3/16" = 1'-0"



BRICK	514 SF	22%
STONE	1115 SF	78%
TOTAL	1429 SF	100%

LOT 4, BLOCK A
TRAVEL CENTERS OF
AMERICA ADDITION
(CAB. G. SLIDE 137)

PLANT LIST

SYMBOL	BOTANICAL NAME	COMMON NAME	QTY.	SIZE	REMARKS
TREES					
CM	<i>Lagerstroemia indica</i> 'Natchez'	Crape Myrtle 'Natchez'	3	30 gal.	container grown, 3-5 trunk, no cross canes, 8' ht., 4' spread, matching
LE	<i>Ulmus parvifolia</i> 'Sempervirens'	Lacebark Elm	1	3" cal.	container grown, 12' ht., 4' spread, 4' branching ht., matching
RB	<i>Cercia canadensis</i> 'Oklahoma'	Oklahoma Redbud	11	30 gal.	container grown, 8' ht., 4' spread min.
SO	<i>Quercus shumardii</i>	Shumard Red Oak	1	4" cal.	container grown, 15' ht., 5' spread, 5' branching ht., matching
SHRUBS/GROUND COVER					
DBH	<i>Ilex cornuta</i> 'Burfordii Nana'	Dwarf Burford Holly	77	5 gal.	container full, 24" spread, 36" o.c.
DWM	<i>Myrica pusilla</i>	Dwarf Wax Myrtle	40	5 gal.	container full, 20" spread, 24" o.c.
TS	<i>Leucophyllum frutescens</i> 'Green Cloud'	Texas Sage 'Green Cloud'	45	5 gal.	container full, 20" spread, 24" o.c.
WC	<i>Euonymus fortunei</i> 'Coloratus'	Wintercreeper	505	4" pots	container (3) 12" runners min., 12" o.c. refer to notes
	<i>Cynodon dactylon</i>	Common Bermudagrass			

NOTE: ALL TREES SHALL HAVE STRAIGHT TRUNKS AND BE MATCHING WITHIN VARIETIES.
PLANT LIST IS AN AID TO BIDDERS ONLY. CONTRACTOR SHALL VERIFY ALL QUANTITIES ON PLAN.
ALL HEIGHTS AND SPREADS ARE MINIMUMS. ALL PLANT MATERIAL SHALL MEET OR EXCEED REMARKS AS INDICATED.

LANDSCAPE TABULATIONS
THE CITY OF ROCKWALL, TEXAS

STREET LANDSCAPING

- 20' wide landscape buffer
- Three (3) canopy trees and four (4) accent trees per 100 l.f.
- Berm and/or shrubs, 30" min. ht.

STATE HIGHWAY 205: 254 l.f.

Required	Provided
20' landscape buffer (8) trees, 4" cal.	20' landscape buffer (7) existing trees, 6" cal. (1) tree, 4" cal.
(11) accent trees	(11) accent trees
Berm/shrubs, 30" ht.	Shrubs, 30" ht.

PARKING LOT LANDSCAPING

- 5% of the interior parking lot shall be landscaped.

Total interior parking lot area = 11,271 s.f.
Total parking spaces = 23 spaces

Required	Provided
564 s.f. (5%)	2,950 s.f. (26%)

SITE LANDSCAPING

- 15% of the total site shall be landscaped for COMMERCIAL.
- 50% of the total requirements shall be located in the front of and along side buildings for COMMERCIAL.

Total site = 1.05 AC; 45,964 s.f.

Required	Provided
6,894 s.f. (15%)	15,288 s.f. (33%)
9,474 s.f. (50%)	10,808 s.f. (70%)

LANDSCAPE NOTES

- CONTRACTOR SHALL VERIFY ALL EXISTING AND PROPOSED SITE ELEMENTS AND NOTIFY LANDSCAPE ARCHITECT OF ANY DISCREPANCIES. SURVEY DATA OF EXISTING CONDITIONS WAS SUPPLIED BY OTHERS.
- CONTRACTOR SHALL LOCATE ALL EXISTING UNDERGROUND UTILITIES AND NOTIFY LANDSCAPE ARCHITECT OF ANY CONFLICTS. CONTRACTOR SHALL EXERCISE CAUTION WHEN WORKING IN THE VICINITY OF UNDERGROUND UTILITIES.
- CONTRACTOR SHALL PROVIDE A MINIMUM 2% SLOPE AWAY FROM ALL STRUCTURES.
- CONTRACTOR SHALL FINE GRADE AREAS TO ACHIEVE FINAL CONTOURS AS INDICATED. LEAVE AREAS TO RECEIVE TOPSOIL 3" BELOW FINAL FINISHED GRADE IN PLANTING AREAS AND 1" BELOW FINAL FINISHED GRADE IN LAWN AREAS.
- ALL PLANTING BEDS AND LAWN AREAS SHALL BE SEPARATED BY STEEL EDGING. NO STEEL EDGING SHALL BE INSTALLED ADJACENT TO BUILDINGS, WALKS, OR CURBS. CUT STEEL EDGING AT 45 DEGREE ANGLE WHERE IT INTERSECTS WALKS AND CURBS.
- TOP OF MULCH SHALL BE 1/2" MINIMUM BELOW THE TOP OF WALKS AND CURBS.
- ALL LAWN AREAS SHALL BE SOLID SOD BERMUDAGRASS, UNLESS OTHERWISE NOTED ON THE DRAWINGS.
- ALL PROVIDED LANDSCAPE AREAS SHALL BE PROVIDED WITH AN AUTOMATIC UNDERGROUND IRRIGATION SYSTEM WITH RAIN AND FREEZE SENSORS AND EVAPOTRANSPIRATION (ET) WEATHER-BASED CONTROLLERS AND SAID IRRIGATION SYSTEM SHALL BE DESIGNED BY A QUALIFIED PROFESSIONAL AND INSTALLED BY A LICENSED IRRIGATOR.
- CONTRACTOR SHALL PROVIDE BID PROPOSAL LISTING UNIT PRICES FOR ALL MATERIAL PROVIDED.
- CONTRACTOR SHALL BE RESPONSIBLE FOR OBTAINING ALL REQUIRED LANDSCAPE AND IRRIGATION PERMITS.

MAINTENANCE NOTES

- THE OWNER, TENANT AND THEIR AGENT, IF ANY, SHALL BE JOINTLY AND SEVERALLY RESPONSIBLE FOR THE MAINTENANCE OF ALL LANDSCAPE.
- ALL LANDSCAPE SHALL BE MAINTAINED IN A NEAT AND ORDERLY MANNER AT ALL TIMES. THIS SHALL INCLUDE MOWING, EDGING, PRUNING, FERTILIZING, WATERING, WEEDING AND OTHER SUCH ACTIVITIES COMMON TO LANDSCAPE MAINTENANCE.
- ALL LANDSCAPE AREAS SHALL BE KEPT FREE OF TRASH, LITTER, WEEDS AND OTHER SUCH MATERIAL OR PLANTS NOT PART OF THIS PLAN.
- ALL PLANT MATERIAL SHALL BE MAINTAINED IN A HEALTHY AND GROWING CONDITION AS IS APPROPRIATE FOR THE SEASON OF THE YEAR.
- ALL PLANT MATERIAL WHICH DIES SHALL BE REPLACED WITH PLANT MATERIAL OF EQUAL OR BETTER VALUE.
- CONTRACTOR SHALL PROVIDE SEPARATE BID PROPOSAL FOR ONE YEAR'S MAINTENANCE TO BEGIN AFTER FINAL ACCEPTANCE.

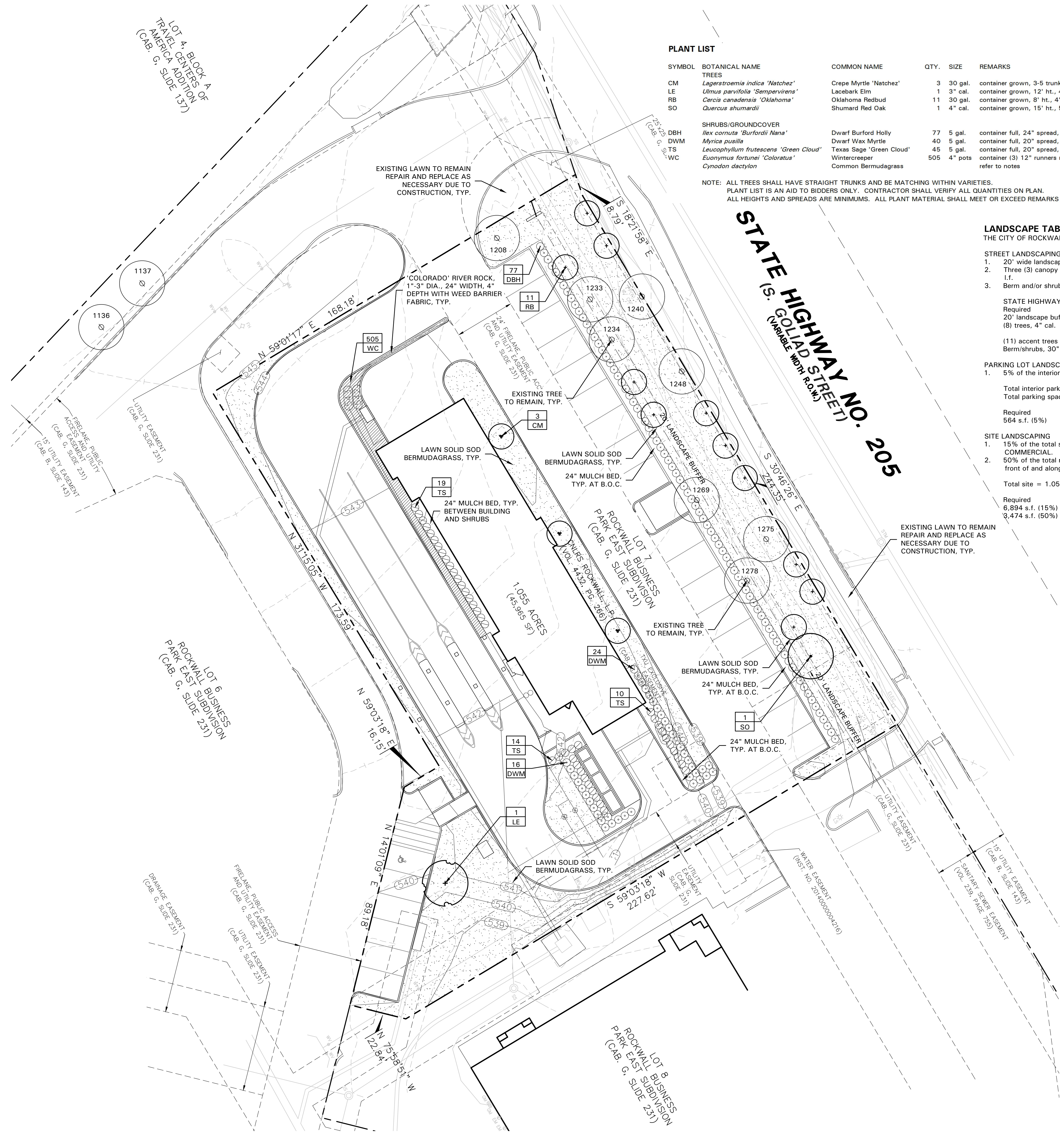
NO TREES WITHIN 5'-0" OF ANY UTILITIES.

GENERAL LAWN NOTES

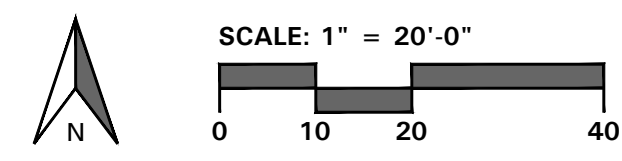
- CONTRACTOR SHALL COORDINATE OPERATIONS AND AVAILABILITY OF EXISTING TOPSOIL WITH ON-SITE CONSTRUCTION MANAGER.
- CONTRACTOR SHALL LEAVE LAWN AREAS 1" BELOW FINAL FINISHED GRADE PRIOR TO TOPSOIL INSTALLATION.
- CONTRACTOR SHALL FINE GRADE AREAS TO ACHIEVE FINAL CONTOURS AS INDICATED ON CIVIL PLANS. ADJUST CONTOURS TO ACHIEVE POSITIVE DRAINAGE AWAY FROM BUILDINGS. PROVIDE UNIFORM ROUNDING AT TOP AND BOTTOM OF SLOPES AND OTHER BREAKS IN GRADE. CORRECT IRREGULARITIES AND AREAS WHERE WATER MAY STAND.
- ALL LAWN AREAS SHALL BE FINE GRADED, IRRIGATION TRENCHES COMPLETELY SETTLED AND FINISH GRADE APPROVED BY THE OWNER'S CONSTRUCTION MANAGER OR LANDSCAPE ARCHITECT PRIOR TO LAWN INSTALLATION.
- CONTRACTOR SHALL REMOVE ALL ROCKS 3/4" DIAMETER AND LARGER, DIRT CLOUDS, STICKS, CONCRETE SPOILS, ETC. PRIOR TO PLACING TOPSOIL AND LAWN INSTALLATION.
- CONTRACTOR SHALL MAINTAIN ALL LAWN AREAS UNTIL FINAL ACCEPTANCE. THIS SHALL INCLUDE, BUT NOT BE LIMITED TO: MOWING, WATERING, WEEDING, CULTIVATING, CLEANING AND REPLACING DEAD OR BARE AREAS TO KEEP PLANTS IN A VIGOROUS, HEALTHY CONDITION.
- CONTRACTOR SHALL GUARANTEE ESTABLISHMENT OF ACCEPTABLE TURF AREA AND SHALL PROVIDE REPLACEMENT FROM LOCAL SUPPLY IF NECESSARY.

SOLID SOD NOTES

- PLANT SOD BY HAND TO COVER INDICATED AREAS COMPLETELY. ENSURE EDGES OF SOD ARE TOUCHING. TOP DRESS JOINTS BY HAND WITH TOPSOIL TO FILL VOIDS.
- ROLL GRASS AREAS TO ACHIEVE A SMOOTH, EVEN SURFACE, FREE FROM UNNATURAL UNDULATIONS.
- WATER SOD THOROUGHLY AS SOD OPERATION PROGRESSES.
- IF INSTALLATION OCCURS BETWEEN SEPTEMBER 1 AND MARCH 1, OVER-SEED BERMUDAGRASS SOD WITH WINTER RYEGRASS, AT A RATE OF FOUR (4) POUNDS PER ONE THOUSAND (1000) SQUARE FEET.



STATE HIGHWAY NO. 205
(S. GOLIAD STREET)
(VARIABLE WIDTH R.O.M.)



12/02/15

NO.	DATE	CITY COMMENTS	REVISION
1	12/02/2015		

Pacheco Koch
7557 RAMBLER ROAD, SUITE 1400
DALLAS, TX 75231 972.235.3031
TX REG. ENGINEERING FIRM F-14439
TX REG. SURVEYING FIRM LS-10193805

LANDSCAPE PLAN
ROCKWALL CAR WASH
LOT 7
ROCKWALL BUSINESS PARK EAST
CITY OF ROCKWALL, ROCKWALL COUNTY, TEXAS

DESIGN	DRAWN	DATE	SCALE	NOTES	FILE	NO.
KAH	MUA	11/12/15	1" = 20'-0"			L2.01

- CASE NO. SP2015-024
- 4245 North Central Expy
 - Suite 501
 - Dallas, Texas 75205
 - 214.865.7192 office



ROCKWALL CAR WASH

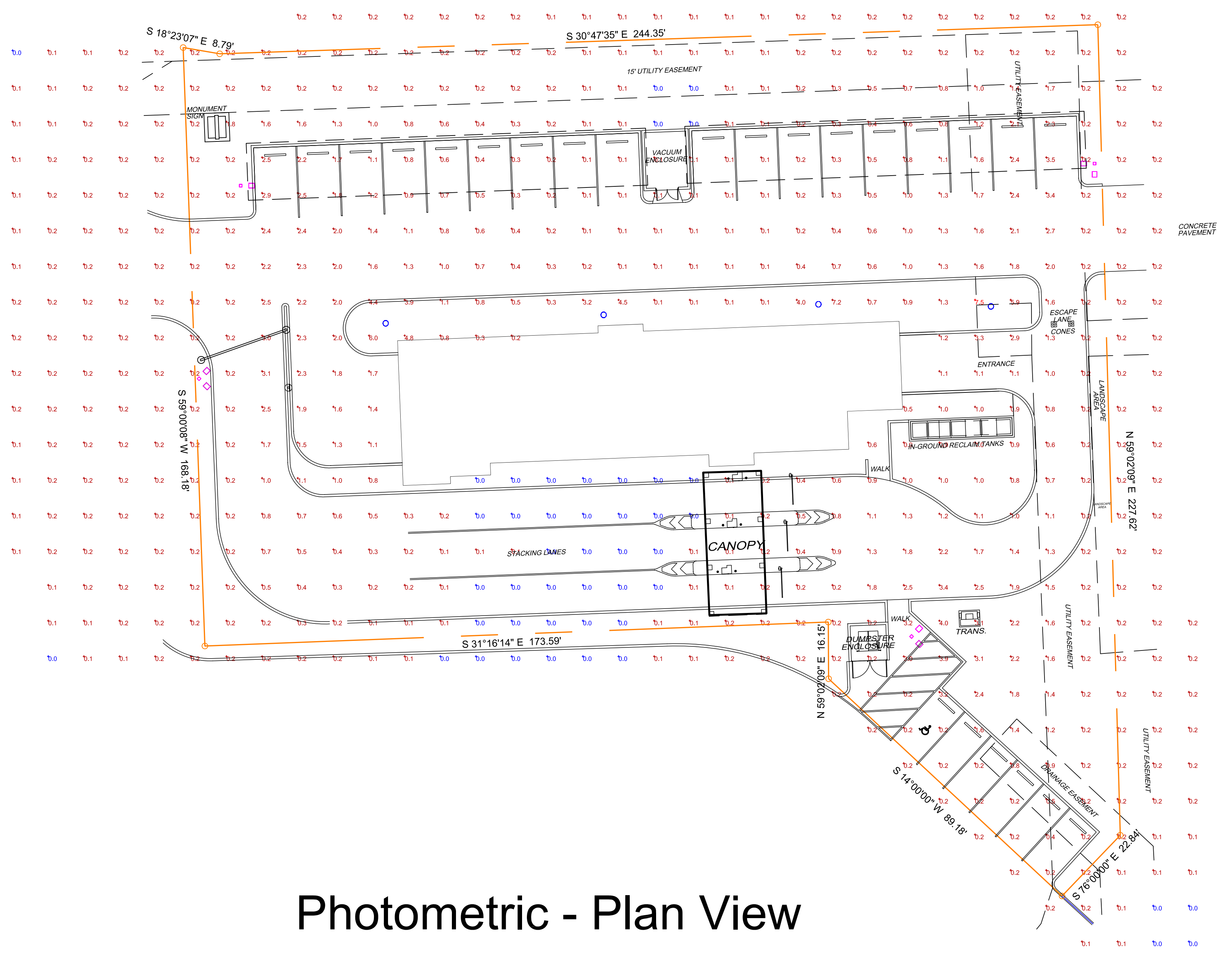
STATISTICS						
Description	Symbol	Avg	Max	Min	Max/Min	Avg/Min
Calc Zone #1	+	0.9 fc	7.5 fc	0.0 fc	N / A	N / A

LUMINAIRE SCHEDULE								
Symbol	Label	Qty	Catalog Number	Description	Lamp	Lumens	LLF	Watts
□	P1	1	DSX0 LED 40C 700 40K TFTM MVOLT	DSX0 LED WITH (2) 20 LED LIGHT ENGINES, TYPE TFTM OPTIC, 4000K, @ 700mA	LED	Absolute	0.95	91.22
□	P2	3	DSX0 LED 40C 700 40K TFTM MVOLT	DSX0 LED WITH (2) 20 LED LIGHT ENGINES, TYPE TFTM OPTIC, 4000K, @ 700mA	LED	Absolute	0.95	182.44
○	C	4	AF 1/42TRT 6AR	AF 6" APERTURE OPEN DOWNLIGHT 1/42TRT	ONE 42-WATT TRIPLE TUBE COMPACT FLUORESCENT, HORIZONTAL POSITION.	3200	0.75	48

NOTES

- OVERALL HEIGHT OF LIGHTING POLE STANDARDS, INCLUDING POLE, BASE AND FIXTURES, ARE NOT TO EXCEED 20'
- CANOPY FIXTURES MOUNTED AT 10'

**S. GOLIAD STREET
(STATE HIGHWAY NO. 205)
(VARIABLE WIDTH RIGHT-OF-WAY)**



Photometric - Plan View

Scale 1" = 20'

Case No. SP2015-024



OWNER:	
DATE:	1/30/16
REVISED:	
SHEET:	

Check out more Lighting and Controls Solutions from Acuity Brands. Click here for details.



[Home](#) [Company](#) [Resources](#) [Training](#) [Distributors](#) [Sales](#) [Sustainability](#) [Contact](#)

Lithonia Lighting Products

- ♦ Outdoor
 - Area Lighting
 - Bollards
 - Floodlighting
 - Parking Garage and Canopy
 - Poles
 - Pole Brackets and Accessories
 - Roadway Lighting
 - Rough Service
 - Security Lighting
 - Wall Mounted
- ♦ Commercial and Industrial Indoor
- ♦ Fluorescent and LED High Bay
- ♦ Special Applications
- ♦ Indoor HID
- ♦ Emergency
- ♦ Downlighting and Track
- ♦ Decorative Indoor and Outdoor
- ♦ The Stock Guide
- ♦ LED Lighting

Quantum ELM/ELM2
Click here for Quantum ELM/ELM2 Recall Information

ABL Wiring and Controls

- ♦ RELOC Wiring Solutions
- ♦ Acuity Controls

Additional ABL Companies

Resources

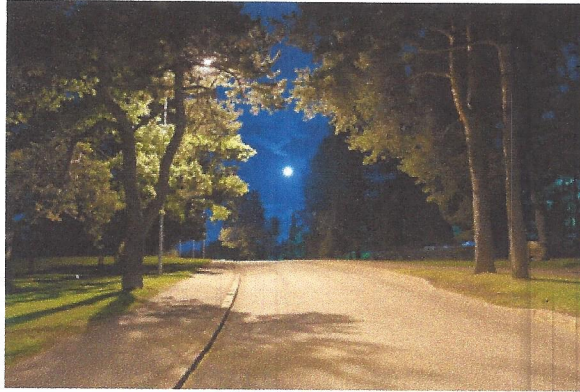
- ♦ Specification Sheets
- ♦ Photometrics
- ♦ Building Information Models
- ♦ PSG Catalog
- ♦ Acrylic/Polycarb Compatibility Table
- ♦ Warranty Information
- ♦ More Resources

Did you find what you need?

[Feedback](#)

D-Series Area Size 0

LED Area Luminaire



Intended Use

Single-piece die-cast aluminum housing has integral heat sink fins to optimize thermal management through conductive and convective cooling. Modular design allows for ease of maintenance and future light engine upgrades. The LED driver is mounted in direct contact with the casting to promote low operating temperature and long life. Housing is completely sealed against moisture and environmental contaminants (IP65). Low EPA (0.8 ft2) for optimized pole wind loading.

Construction

Single-piece die-cast aluminum housing has integral heat sink fins to optimize thermal management through conductive and convective cooling. Modular design allows for ease of maintenance and future light engine upgrades. The LED driver is mounted in direct contact with the casting to promote low operating temperature and long life. Low EPA (0.9 ft2) for optimized pole wind loading.

Finish

Exterior parts are protected by a zinc-infused Super Durable TGIC thermoset powder coat finish that provides superior resistance to corrosion and weathering. A tightly controlled multi-stage process ensures a minimum 3 mils thickness for a finish that can withstand extreme climate changes without cracking or peeling. Available in both textured and non-textured finishes.

Optics

Precision-molded proprietary acrylic lenses are engineered for superior area lighting distribution, uniformity, and pole spacing. Light engines are available in standard 4000K (70 minimum CRI) or optional 3000K (80 minimum CRI) or 5000K (67 CRI) configurations. The D-Series Size 0 has zero uplight and qualifies as a Nighttime Friendly™ product, meaning it is consistent with the LEED® and Green Globes™ criteria for eliminating wasteful uplight.

Electrical

Light engine(s) configurations consist of high-efficacy LEDs mounted to metal-core circuit boards to maximize heat dissipation and promote long life (up to L96/100,000 hours at 25°C). Class 1 electronic drivers are designed to have a power factor >90%, THD <20%, and an expected life of 100,000 hours with <1% failure rate. Easily serviceable 10kV or 6kV surge protection device meets a minimum Category C Low operation (per ANSI/IEEE C62.41.2).

Installation

Included mounting block and integral arm facilitate quick and easy installation. Stainless steel bolts fasten the mounting block securely to poles and walls, enabling the D-Series Size 1 to withstand up to a 3.0 G vibration load rating per ANSI C136.31. The D-Series Size 0 utilizes the AERISTM series pole drilling pattern. Optional terminal block, tool-less entry, and NEMA photocontrol receptacle are also available.

Listings

CSA certified to U.S. and Canadian standards. Light engines are IP66 rated; luminaire is IP65 rated. Rated for -40°C minimum ambient. U.S. Patent No. D672,492 S. International patent pending.

SHARE [f](#) [t](#) [v](#)



Product Overview

[Specification Sheets](#)

[Photometric Data](#)

[Building Information Models](#)

[Installation Instructions](#)

[Sell Sheets](#)

[FAQs](#)

[Additional Images](#)

[Questions about this product?](#)

Related Products



TDD LED 2



D-Series Area Pole Mount



KADR-LED



TDD LED



D-Series Area Size 1 Mast Arm



D-Series Area Size 1



D-Series Area Size 2



MR2-LED



MRT2-LED



KAD-LED



MR1-LED



AS1-LED



KADT-LED



CSX2-LED



CSX1-LED

Warranty

Five year limited warranty. Full warranty terms located at www.AcuityBrands.com/CustomerResources/Terms_and_conditions.aspx.

Note: Specifications subject to change without notice.

[Link to Mounting Bracket video.](#)



Our Brands

Lithonia Lighting • Acculamp • American Electric Lighting • Antique Street Lamps • Carandini • Dark To Light • eldoLED • Gotham
Healthcare Lighting • Holophane • Hydrel • Lighting Control & Design • Mark Architectural Lighting • Pathway Connectivity • Peerless
Reloc • ROAM • Sensor Switch • Sunoptics • Synergy • Tersen • Winona Lighting

Customer Service

[Contact Us](#) [Comments](#)
[Site Terms](#) [Privacy Policy](#)

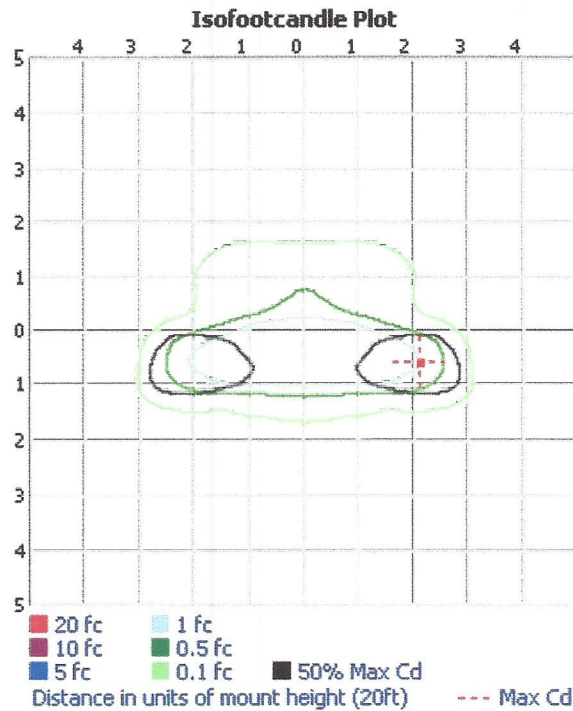
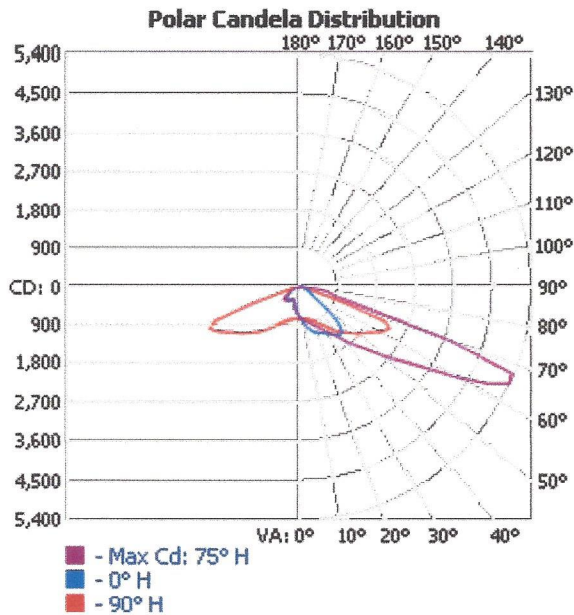


© 2015 Acuity Brands Lighting, Inc. All rights reserved.

OUTDOOR PHOTOMETRIC REPORT

CATALOG: DSX0 LED 40C 530 AMBPC T1S MVOLT

TEST #: LTL23422P7
 TEST LAB: SCALED PHOTOMETRY
 TEST DATE: 4/23/2013
 CATALOG: DSX0 LED 40C 530 AMBPC T1S MVOLT
 DESCRIPTION: DSX0 LED WITH (2) 20 LED LIGHT ENGINES, TYPE T1S OPTIC, AMBER PC, @ 530MA
 Series: D-SERIES AREA SIZE 0
 LAMP CAT #: NICHIA 219B
 LAMP: LED
 LAMP OUTPUT: TOTAL LUMINAIRE LUMENS: 4878, **ABSOLUTE PHOTOMETRY ***
 BALLAST / DRIVER: LED DRIVER
 INPUT WATTAGE: 68.04
 LUMINOUS OPENING: RECTANGLE (L: 6.24", W: 5.28")
 Max Cd: 5,371.2 AT HORIZONTAL: 75°, VERTICAL: 65°
 Roadway Class: SHORT, TYPE II



*TEST BASED ON ABSOLUTE PHOTOMETRY WHERE LAMP LUMENS=LUMENS TOTAL.
 *CUTOFF CLASSIFICATION AND EFFICIENCY CANNOT BE PROPERLY CALCULATED FOR ABSOLUTE PHOTOMETRY.

VISUAL PHOTOMETRIC TOOL 1.2.47 COPYRIGHT 2015, ACUITY BRANDS LIGHTING.
 THIS PHOTOMETRIC REPORT HAS BEEN GENERATED USING METHODS RECOMMENDED BY THE IESNA. CALCULATIONS ARE BASED ON PHOTOMETRIC DATA PROVIDED BY THE MANUFACTURER, AND THE ACCURACY OF THIS PHOTOMETRIC REPORT IS DEPENDENT ON THE ACCURACY OF THE DATA PROVIDED. END-USER ENVIRONMENT AND APPLICATION (INCLUDING, BUT NOT LIMITED TO, VOLTAGE VARIATION AND DIRT ACCUMULATION) CAN CAUSE ACTUAL PHOTOMETRIC PERFORMANCE TO DIFFER FROM THE PERFORMANCE CALCULATED USING THE DATA PROVIDED BY THE MANUFACTURER. THIS REPORT IS PROVIDED WITHOUT WARRANTY AS TO ACCURACY, COMPLETENESS, RELIABILITY OR OTHERWISE. IN NO EVENT WILL ACUITY BRANDS LIGHTING BE RESPONSIBLE FOR ANY LOSS RESULTING FROM ANY USE OF THIS REPORT.



OUTDOOR PHOTOMETRIC REPORT

CATALOG: DSX0 LED 40C 530 AMBPC T1S MVOLT



ZONAL LUMEN SUMMARY

Zone	Lumens	% Luminaire
0-30	668.8	13.7%
0-40	1,267.3	26%
0-60	3,245.2	66.5%
60-90	1,632.8	33.5%
70-100	540.8	11.1%
90-120	0	0%
0-90	4,878.0	100%
90-180	0	0%
0-180	4,878.0	100%

LUMENS PER ZONE

Zone	Lumens	% Total	Zone	Lumens	% Total
0-10	71.2	1.5%	90-100	0	0%
10-20	218.8	4.5%	100-110	0	0%
20-30	378.8	7.8%	110-120	0	0%
30-40	598.5	12.3%	120-130	0	0%
40-50	894.9	18.3%	130-140	0	0%
50-60	1,083.1	22.2%	140-150	0	0%
60-70	1,092.0	22.4%	150-160	0	0%
70-80	412.0	8.4%	160-170	0	0%
80-90	128.8	2.6%	170-180	0	0%

ROADWAY SUMMARY

Distribution:	TYPE II, SHORT	
Max Cd, 90 Deg Vert:	0	
Max Cd, 80 to <90 Deg:	655.6	
	Lumens	% Lamp
Downward Street Side:	3,556.2	72.9%
Downward House Side:	1,321.6	27.1%
Downward Total:	4,877.8	100%
Upward Street Side:	0	0%
Upward House Side:	0	0%
Upward Total:	0	0%
Total Lumens:	4,877.8	100%

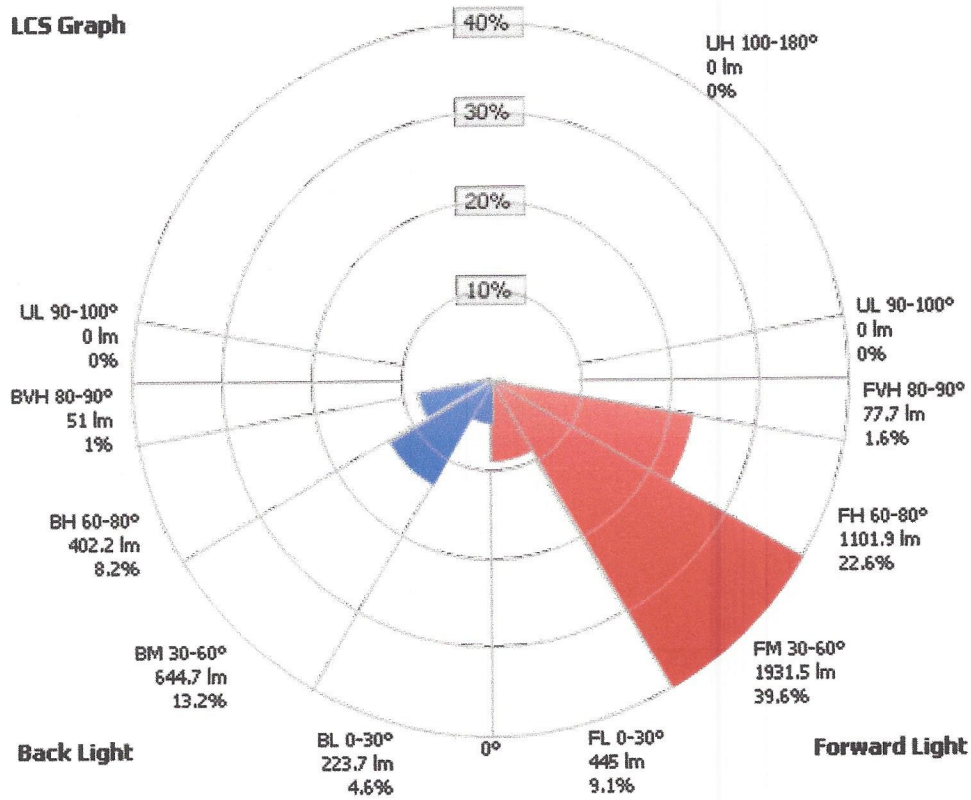
LCS TABLE

BUG RATING	B1 - U0 - G1	
FORWARD LIGHT	LUMENS	LUMENS %
Low(0-30):	445.0	9.1%
Medium(30-60):	1,931.5	39.6%
High(60-80):	1,101.9	22.6%
Very High(80-90):	77.7	1.6%
BACK LIGHT		
Low(0-30):	223.7	4.6%
Medium(30-60):	644.7	13.2%
High(60-80):	402.2	8.2%
Very High(80-90):	51.0	1%
UPLIGHT		
Low(90-100):	0	0%
High(100-180):	0	0%
TRAPPED LIGHT:	0.2	0%

OUTDOOR PHOTOMETRIC REPORT
CATALOG: DSX0 LED 40C 530 AMBPC T1S MVOLT



LCS Graph



Back Light

Forward Light

Scale = Max LCS %

Trapped Light: 0.2lm, 0%

OUTDOOR PHOTOMETRIC REPORT
 CATALOG: DSX0 LED 40C 530 AMBPC T1S MVOLT



CANDELA TABLE - TYPE C

	0	10	20	30	40	50	60	70	80	90	100	110	120	130	140	150	160	170	180	
0	739	739	739	739	739	739	739	739	739	739	739	739	739	739	739	739	739	739	739	739
5	843	854	849	846	840	841	841	841	841	837	840	836	832	831	830	832	829	825	822	822
10	954	965	959	956	950	949	948	949	948	944	943	939	934	929	927	924	920	913	908	908
15	1071	1077	1071	1067	1060	1061	1060	1058	1056	1053	1050	1045	1038	1034	1031	1027	1019	1012	1005	1005
20	1137	1141	1134	1133	1124	1129	1127	1126	1127	1121	1119	1116	1113	1112	1111	1111	1108	1102	1099	1099
25	1195	1197	1192	1192	1182	1187	1187	1185	1187	1184	1182	1179	1174	1174	1178	1178	1178	1175	1177	1177
30	1272	1277	1277	1273	1262	1269	1269	1269	1273	1267	1265	1259	1253	1251	1250	1255	1258	1259	1264	1264
35	1369	1381	1380	1374	1365	1374	1377	1380	1387	1385	1385	1383	1380	1377	1377	1380	1382	1389	1399	1399
40	1461	1461	1461	1457	1454	1468	1479	1488	1500	1503	1506	1512	1516	1520	1527	1547	1569	1593	1624	1624
45	1337	1275	1278	1283	1297	1325	1358	1397	1439	1479	1519	1556	1590	1624	1662	1706	1756	1814	1892	1892
50	794	689	695	714	742	780	840	907	983	1060	1151	1242	1338	1442	1553	1668	1797	1932	2091	2091
55	380	360	351	349	352	361	374	390	415	446	495	561	662	781	931	1108	1305	1536	1821	1821
60	289	270	262	265	270	278	287	294	300	307	316	333	362	398	434	485	558	670	847	847
65	230	214	209	213	220	231	241	252	261	266	276	289	302	316	336	365	394	404	418	418
70	170	167	169	174	181	190	199	208	215	222	231	241	253	264	277	290	303	317	347	347
75	124	119	123	127	132	135	141	150	160	171	185	197	206	214	220	223	230	247	270	270
80	97	91	93	96	99	105	112	118	126	135	145	158	167	169	169	171	175	182	193	193
85	56	44	44	49	51	53	57	63	71	76	82	88	92	94	95	96	97	105	114	114
90	0	0	0	0	0	0	0	0	0	0	0	0	0	0	0	0	0	0	0	0
95	0	0	0	0	0	0	0	0	0	0	0	0	0	0	0	0	0	0	0	0
100	0	0	0	0	0	0	0	0	0	0	0	0	0	0	0	0	0	0	0	0
105	0	0	0	0	0	0	0	0	0	0	0	0	0	0	0	0	0	0	0	0
110	0	0	0	0	0	0	0	0	0	0	0	0	0	0	0	0	0	0	0	0
115	0	0	0	0	0	0	0	0	0	0	0	0	0	0	0	0	0	0	0	0
120	0	0	0	0	0	0	0	0	0	0	0	0	0	0	0	0	0	0	0	0
125	0	0	0	0	0	0	0	0	0	0	0	0	0	0	0	0	0	0	0	0
130	0	0	0	0	0	0	0	0	0	0	0	0	0	0	0	0	0	0	0	0
135	0	0	0	0	0	0	0	0	0	0	0	0	0	0	0	0	0	0	0	0
140	0	0	0	0	0	0	0	0	0	0	0	0	0	0	0	0	0	0	0	0
145	0	0	0	0	0	0	0	0	0	0	0	0	0	0	0	0	0	0	0	0
150	0	0	0	0	0	0	0	0	0	0	0	0	0	0	0	0	0	0	0	0
155	0	0	0	0	0	0	0	0	0	0	0	0	0	0	0	0	0	0	0	0
160	0	0	0	0	0	0	0	0	0	0	0	0	0	0	0	0	0	0	0	0
165	0	0	0	0	0	0	0	0	0	0	0	0	0	0	0	0	0	0	0	0
170	0	0	0	0	0	0	0	0	0	0	0	0	0	0	0	0	0	0	0	0
175	0	0	0	0	0	0	0	0	0	0	0	0	0	0	0	0	0	0	0	0
180	0	0	0	0	0	0	0	0	0	0	0	0	0	0	0	0	0	0	0	0