

STROHMEYER
ARCHITECTS INC.

Consultants:

CIVIL:

STRUCTURAL:

MEP:

FOOD SERVICE:

LANDSCAPING:

SCHEMATIC DESIGN

**NOT FOR
CONSTRUCTION**

ROCKWALL COUNTY

**8020 RESTAURANTS LLC
C/O HG SPLY CO.
ROCKWALL, TX
2008 GREENVILLE AVE
DALLAS, TX 75206**

**HG SPLY CO
SUNSET RIDGE
ROCKWALL, TEXAS**

Project Number: 051502
Drawing Date: 06/11/2015

Drawn:

Checked:

Scale:



ACAD File: HG SPLY-061115-ELEV-201.dwg
© 2015 Strohmeier Architects, Inc.

Revisions:

Sheet Title:
ELEVATIONS

**A 201
SP2015-015**

MATERIAL SCHEDULE

- WOOD LOUVERS - 
- METAL PANEL - 
- METAL (PAINT) - 

WHITE SUBWAY TILE 

GRAND BLANC
BURNISHED BLOCK
UNICORN 



SP2015



3 NORTH ELEVATION
SCALE: 1/8" = 1'-0"

TOTAL BUILDING WALL HARD SURFACE : 2,066.5 SF
TOTAL BURNISHED BLOCK : 521 SF = 25%
TOTAL SUBWAY TILE: 761 SF = 37%
TOTAL WOOD LOUVERS: 454 SF = 22%
TOTAL METAL PANEL: 330.5 SF = 16%



4 EAST ELEVATION
SCALE: 1/8" = 1'-0"

TOTAL BUILDING WALL HARD SURFACE : 1912 SF
TOTAL BURNISHED BLOCK: 746.5 SF = 39%
TOTAL SUBWAY TILE: 562.5 SF = 29.5%
TOTAL WOOD LOUVERS: 441 SF = 23%
TOTAL METAL PANEL: 162 SF = .85%



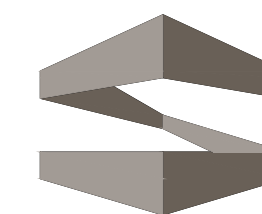
1 WEST ELEVATION - SUNSET RIDGE
SCALE: 1/8" = 1'-0"

TOTAL BUILDING WALL HARD SURFACE : 1,676 SF
TOTAL BURNISHED BLOCK: 440.5 SF = 26%
TOTAL SUBWAY TILE: 584 SF = 35%
TOTAL WOOD LOUVERS: 473.5 SF = 28%
TOTAL METAL PANEL: 178 SF = 11%



2 SOUTH ELEVATION
SCALE: 1/8" = 1'-0"

TOTAL BUILDING WALL HARD SURFACE : 2,074.5 SF
TOTAL BURNISHED BLOCK: 626 SF = 30%
TOTAL SUBWAY TILE: 685 SF = 33%
TOTAL WOOD LOUVERS: 559.5 SF = 27%
TOTAL METAL PANEL: 204 SF = 10%



STROHMEYER
ARCHITECTS INC.

Consultants:

ISSUED FOR
DEVELOPMENT REVIEW

8020 RESTAURANTS, LLC

HG SPLY CO

**SUNSET RIDGE BLVD.
ROCKWALL, TX 75032**

Project Number: -
Drawing Date: 6/11/2015
Drawn:
Checked:
Scale: AS SHOWN
ACAD File:
Copyright 2015 Strohmeier
Architects, Inc.

Revisions:
1 - 7/6/2015 - Revisions per City of
Rockwall Review (6/22/2015)

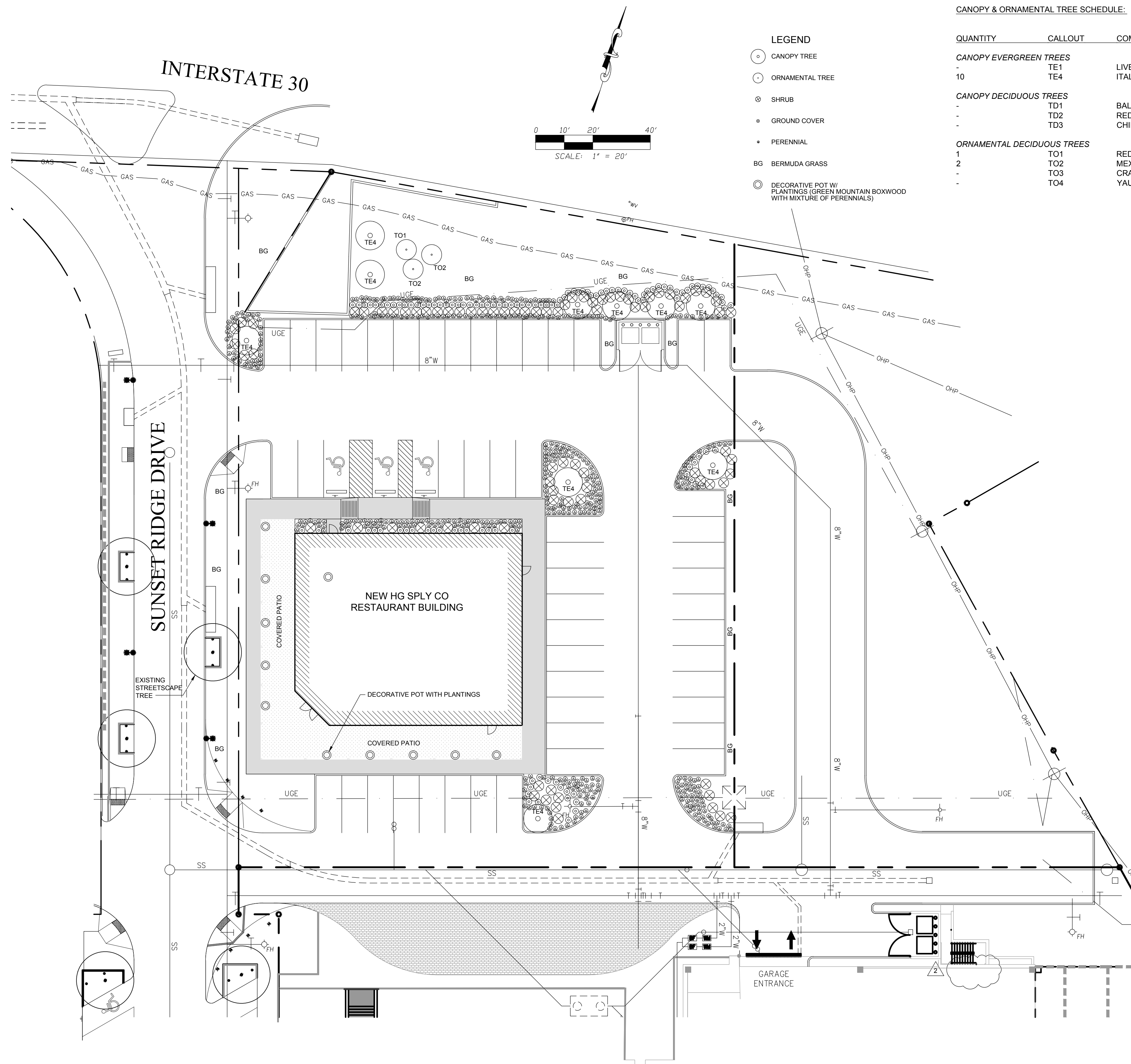
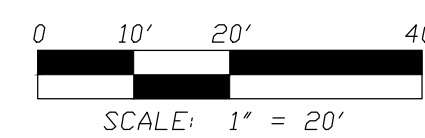
Sheet Title:
**LANDSCAPING
PLAN**

L-101

CANOPY & ORNAMENTAL TREE SCHEDULE:

QUANTITY	CALLOUT	COMMON NAME	BOTANICAL NAME	SIZE / CONDITION
CANOPY EVERGREEN TREES				
-	TE1	LIVE OAK	QUERCUS VIRGINIANA	100-GAL., 4.0"-4.5" CAL., 14'-16' HT., CLEAR TRUNK 8'
10	TE4	ITALIAN CYPRESS	CUPRESSUS SEMPERVIRENS	65-GAL., 3.0"-3.5" CAL., 14'-16' HT., FULL ROUNDED FORM MATCHED HEIGHT
CANOPY DECIDUOUS TREES				
-	TD1	BALD CYPRESS	TAXODIUM DISTICHUM	100-GAL., 4.0"-4.5" CAL., 16'-18' HT., CLEAR TRUNK 6'
-	TD2	RED OAK	QUERCUS SHUMARDII	100-GAL., 4.0"-4.5" CAL., 14'-16' HT., CLEAR TRUNK 8'
-	TD3	CHINESE PISTACHE	PISTACHIA CHINENSIS	100-GAL., 4.0"-4.5" CAL., 12'-14' HT., CLEAR TRUNK 8'
ORNAMENTAL DECIDUOUS TREES				
1	TO1	REDBUD	CERCIS CANADENSIS	65-GAL., 3" CAL., 8'-10' HT., TREE FORM
2	TO2	MEXICAN PLUM	PRUNUS MEXICANA	65-GAL., 3" CAL., 8'-10' HT., TREE FORM
-	TO3	CRAPEMYRTLE	LAGERSTROEMIA INDICA	65-GAL., 3" CAL., 8'-10' HT., TREE FORM
-	TO4	YAUPON HOLLY	ILEX VOMITORIA	65-GAL., 3" CAL., 8'-10' HT., TREE FORM

- LEGEND**
- CANOPY TREE
 - ORNAMENTAL TREE
 - ⊗ SHRUB
 - GROUND COVER
 - PERENNIAL
 - BG BERMUDA GRASS
 - ⊙ DECORATIVE POT W/ PLANTINGS (GREEN MOUNTAIN BOXWOOD WITH MIXTURE OF PERENNIALS)



1 - LANDSCAPING PLAN
SCALE: 1"= 20'

LANDSCAPING GENERAL NOTES:

1. NO LANDSCAPING TREES SHALL BE WITHIN 5' OF ANY UTILITY.
2. A MINIMUM CLEARANCE OF 5' SHALL BE MAINTAINED BETWEEN LANDSCAPING AND FIRE HYDRANTS.
3. IRRIGATION SHALL BE IN ACCORDANCE WITH THE UNIFORM DEVELOPMENT CODE.

LANDSCAPING GENERAL REQUIREMENTS AND SCHEDULE

LAND DEVELOPMENT DISTRICT: PD-32

STREETSCAPE LANDSCAPING REQUIREMENTS & SCHEDULE:

1. CONTRACTOR SHALL PROVIDE EITHER LANDSCAPING OPTION A OR B PER PD-32, EXHIBIT C-4, IN TREE LEAVE-OUTS TO MATCH EXISTING ALONG SUMMER LEE DRIVE. OPTION A SHALL BE A MIX OF SHRUB PERENNIAL, ORNAMENTAL GRASS, AND GROUND COVER PLANTING. PLANT MATERIALS SHALL PROVIDE A MIX OF HEIGHT, COLOR, TEXTURE AND EVERGREEN STRUCTURE. OPTION B SHALL BE MEXICAN BEACH STONE PEBBLES.
2. LANDSCAPING LEAVE-OUTS SHALL HAVE TREE SUB-DRAINAGE TIED TO THE STORM DRAIN SYSTEM.
3. TREES IN LANDSCAPING LEAVE-OUTS SHALL BE 4-INCH CALIPER, 100 GALLON. THE VARIETY OF TREES SHALL MATCH EXISTING PLANTINGS ALONG SUMMER LEE DRIVE.

SITE LANDSCAPING REQUIREMENTS & SCHEDULE:

1. TREE VARIETIES SHALL BE A MIX OF ANY OF THE FOLLOWING CANOPY AND ORNAMENTAL TREES IN NATURAL GROUPINGS: LIVE OAK, CEDAR ELM, RED OAK, BURR OAK, CHINQUAPIN OAK, BALD CYPRESS, POND CYPRESS, MEXICAN PLUM, DESERT WILLOW, CHINESE PISTACHIO, YAUPON HOLLY, RED BUD, CRAPE MYRTLE VITEX AND EVE'S NECKLACE.
2. ORNAMENTAL TREES, SHRUBS, PERENNIAL ORNAMENTAL GRASS AND PERENNIALS SHALL BE PROVIDED AT LANDSCAPE ISLANDS AND ADJACENT TO THE BUILDING.
3. SHRUBS SHALL BE 3 GALLON EVERBLOOMING ROSE AND 7 GALLON EDWARD GOUCHER ABELIA.
4. PERENNIAL ORNAMENTAL GRASS SHALL BE HAMELIN 1 GALLON FOUNTAIN GRASS.
5. PERENNIALS SHALL BE 1 GALLON RED VELVET EVERGREEN DAYLILIES AND 1 GALLON WHITE LANTANA TRAILING.
7. WHERE NOTED, AREAS SHALL BE SOLID SODDED WITH BERMUDA GRASS.
8. DECORATIVE POTS TO HAVE GREEN MOUNTAIN BOXWOOD WITH MIXTURE OF PERENNIALS.

IMPERVIOUS AREA / LANDSCAPING CALCULATION:

IMPERVIOUS AREA: RESTAURANT LOT: 19,460 S.F.
 REQUIREMENT: (LS ORD.) IF IMPERVIOUS AREA IS GREATER THAN 20,000 S.F., 1 TREE REQUIRED PER 10 PARKING SPACES.
 (PD-32 GOVERNS) ONE 3-INCH CALIPER, 65 GALLON CANOPY TREE MUST BE PROVIDED FOR EVERY 8 PARKING SPACES. AT 53 TOTAL PARKING SPACES, 7 CANOPY TREES ARE REQUIRED. ADDITIONALLY CANOPY REQUIRED WITHIN 80' OF PARKING STALLS.
 7 CANOPY TREES REQUIRED
 10 CANOPY TREES PROVIDED
 (COUNT DOES NOT INCLUDING STREETSCAPE TREES)

800.364.0098 • Fax: 281.997.5441 • www.amerluxexterior.com

Description

This contemporary styled **D154-TS20 Series** combines a cast aluminum housing, a spun aluminum shade and segmented reflector to create an efficient luminaire with Type III(**HR3**) or Type V(**HR5**) light distribution. Some of the most popular brackets for use with this fixture are shown below, however there are others available in the "Brackets & Wall Luminaires" section of this catalog.

Installation

The luminaire will mount to the bracket as shown on the reverse page. Post top luminaire brackets will mount to a 3" OD post or tenon with (6) 5/16" stainless steel set screws. Wall bracket models have four 3/8" holes for mounting (wall mount hardware is not included).

Electrical

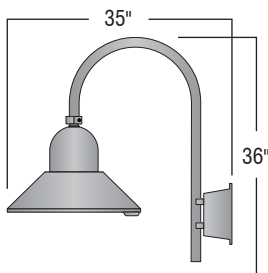
- High power factor ballast (HPF), core and coil type, pre-wired and tested
- Easy ballast pod access
- 4KV pulse rated porcelain socket
- Suitable for wet location

Lens

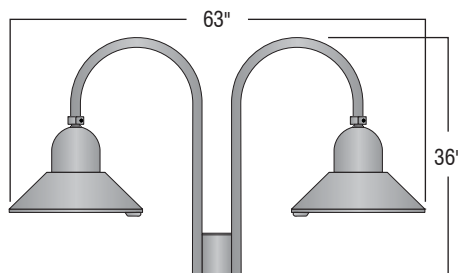
Clear smooth flat tempered glass (**GL**)

Finish

Premium quality thermoset polyester powdercoat (see Finish Selection)

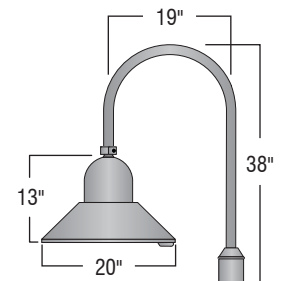


WBR03/D154-TS20



PT12/D154-TS20

EPA: 2.58
Also available in three and four light combinations.



PT01/D154-TS20

EPA: 1.23

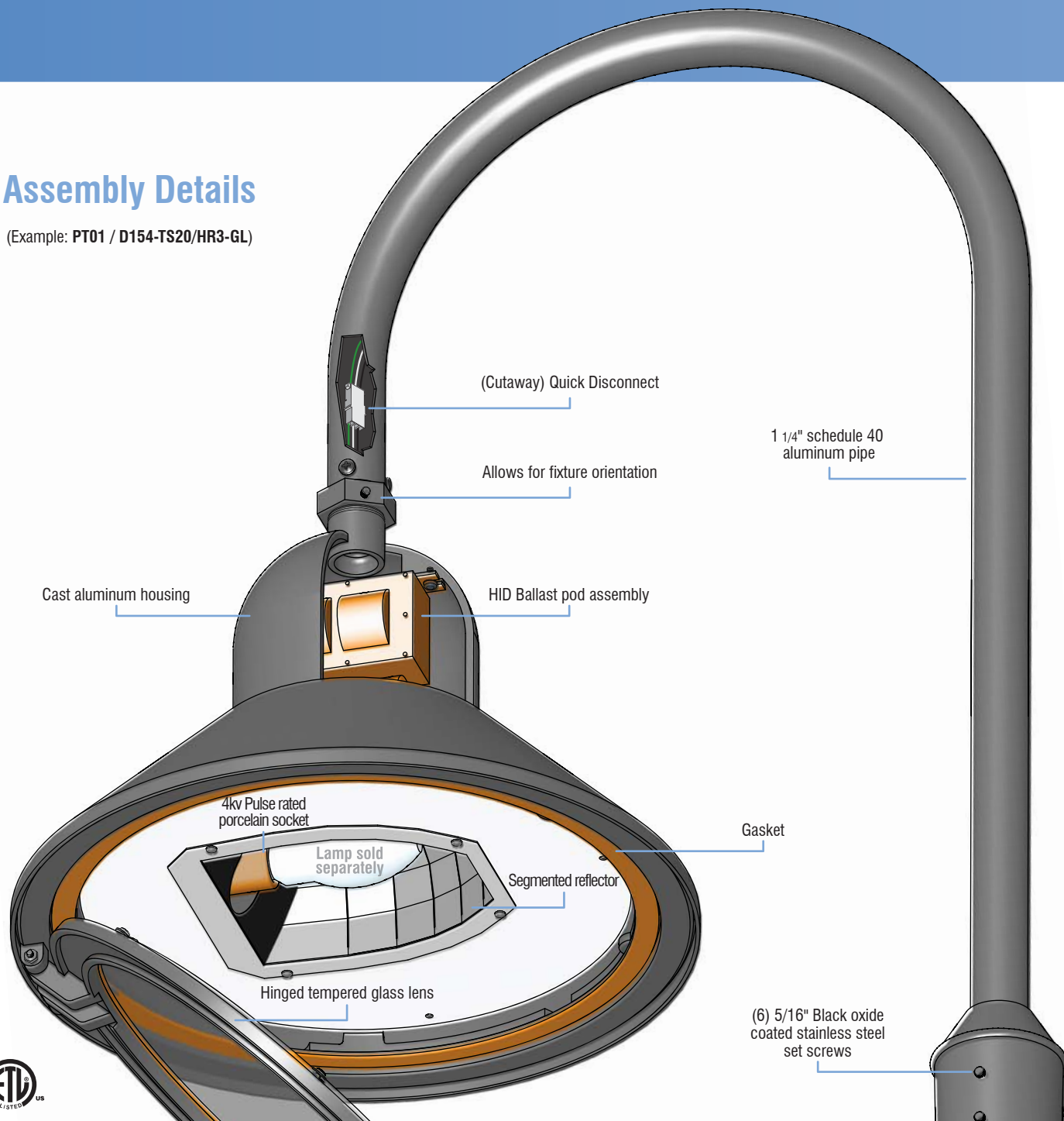
Ordering Guide							
Bracket	Luminaire	Light Distribution	Lens	Light Source	Voltage	Finish	Option
PT01	D154-TS20	HR5	GL	100HPS	120v	BLK	PCL
		HR3		50MH,70MH	208v	CLB,GRN	
				100MH,50HPS	240v	WHT,TBK	
				70HPS	277v	ATC,GTG	

Additional light sources, voltages, and custom colors are available. Contact factory for details.

Light Sources	
Wattage	Socket Type
50MH, 70MH, 100MH, 150MH	Medium
50HPS, 70HPS, 100HPS, 150HPS	Medium
PL-13	2-pin
CFL 26, 32, or 42	4-pin

Assembly Details

(Example: PT01 / D154-TS20/HR3-GL)

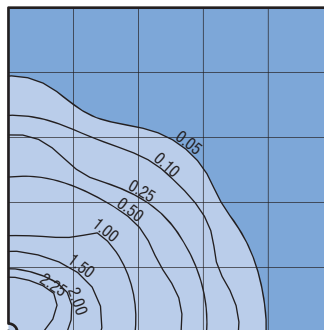


Optical Systems

Standard
(HR3-GL) - Type III segmented reflector with a clear flat tempered glass.

(HR5-GL) - Type V segmented reflector with a clear flat tempered glass.

Standard Photometry



PT01/D154-TS20/HR5
 Typical HID light source
 8,500 Lumen
 12' Mounting Height
 Grid Spacing is 12'

Masonry Quick Reference Pocket Guide

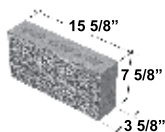


ANCHOR[®]
BUILD SOMETHING BEAUTIFUL

Trattino™ finish

A smooth and unfilled textured surface provides a random appearance that emulates the look of natural travertine.

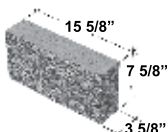
- Ideal for exterior or interior applications
- Available in veneer and structural block sizes



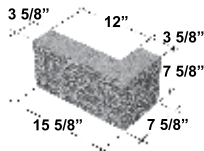
402
Double End



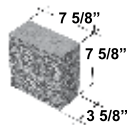
405
Half Long



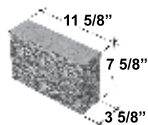
432
Face & End



433
L Corner & End



435
Half Long Face & End



436
Three-Quarter Long
Face & End



Trattino™ finish



Winter White (P)



Limestone (P)



Toffee (C)



Wheat (C)



Parchment (P)



Sahara (C)



Kasota Pink (P)



Antique White (C)



Kasota (P)



October Yellow (C)

Burnished finish



Winter White (P)



Parchment (P)



Antique White (C)



Sahara (C)



Limestone (P)



October Yellow (C)



Honey Mustard (C)



Toffee (C)



Mojave (C)



Gold Rush (P)