

STROHMEYER
ARCHITECTS INC.

Consultants:

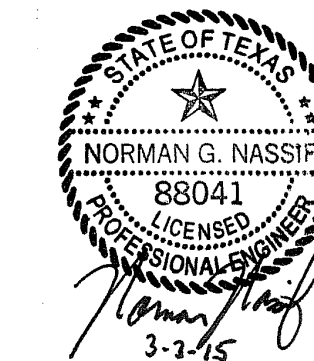
Nassif Engineering & Architecture, LLC



TXBPE Registration No. : F-16335
TBAE Registration No. : BR400

Copyright 2015 Nassif Engineering
& Architecture, LLC

**ISSUED FOR
DEVELOPMENT REVIEW**



**ORTHOPAEDIC
SPECIALISTS
OF
DALLAS**

ROCKWALL, TX 75032

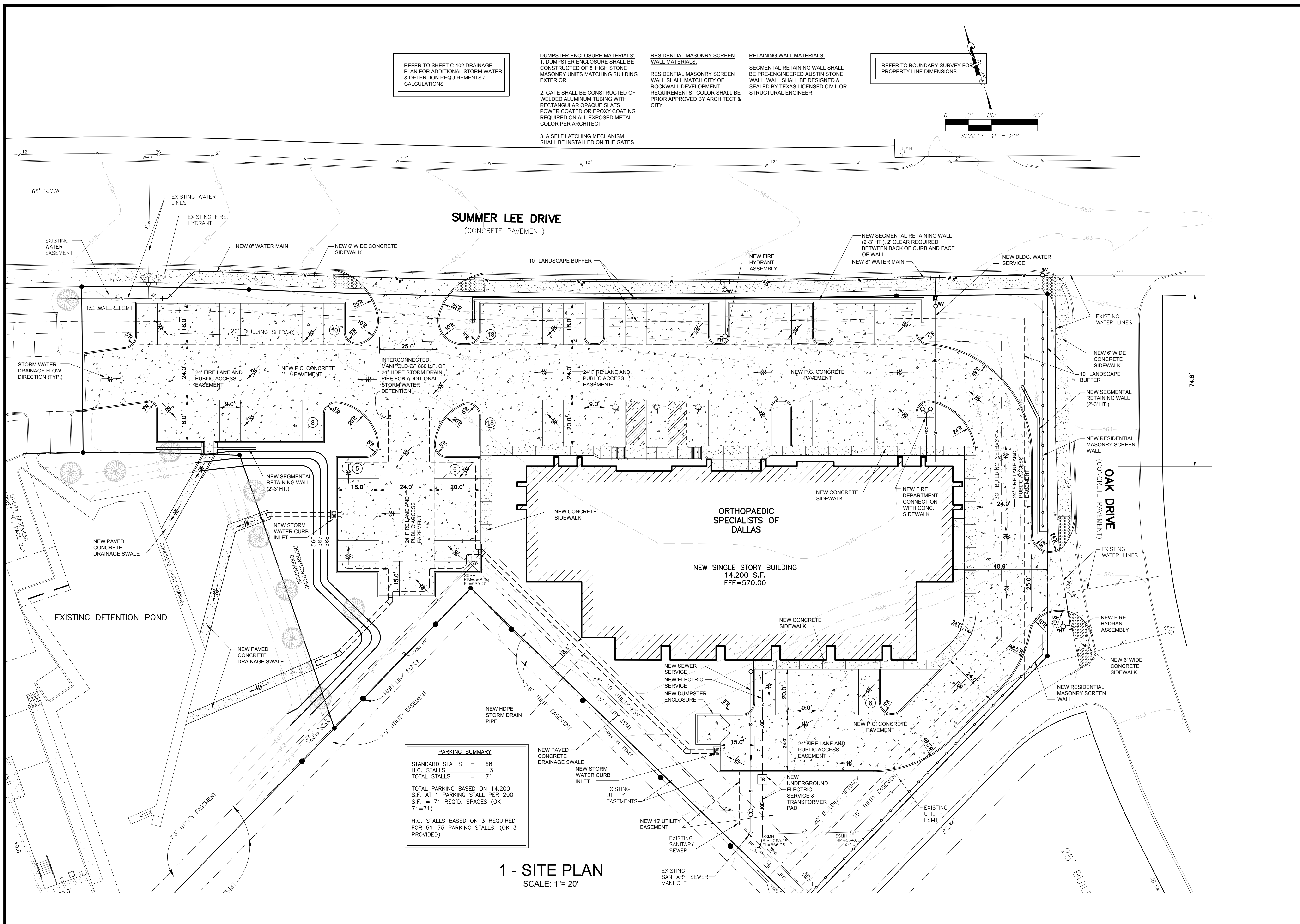
Project Number: 15-117
Drawing Date: 2/13/2015
Drawn:
Checked:
Scale: AS SHOWN
ACAD File:
Copyright 2015 Strohmeier
Architects, Inc.

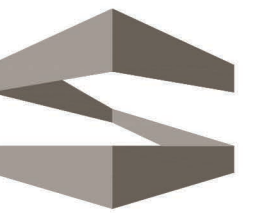
Revisions:

3/3/2015 - Revisions per Rockwall
Development Review (2/20/2015)

Sheet Title:
SITE PLAN

C-101





STROHMEYER
ARCHITECTS INC.

Consultants:

CIVIL:

STRUCTURAL:

MEP:

FOOD SERVICE:

LANDSCAPING:

SCHEMATIC DESIGN

**NOT FOR
CONSTRUCTION**

ROCKWALL COUNTY

**ORTHOPAEDIC
SPECIALISTS
OF DALLAS
ROCKWALL, TEXAS**

Project Number: 051421

Drawing Date: 02/13/2015

Drawn:

Checked:

Scale:

ACAD File: OSD-Elevations.dwg

© 2015 Strohmeier Architects, Inc.

Revisions:

Sheet Title:

A201

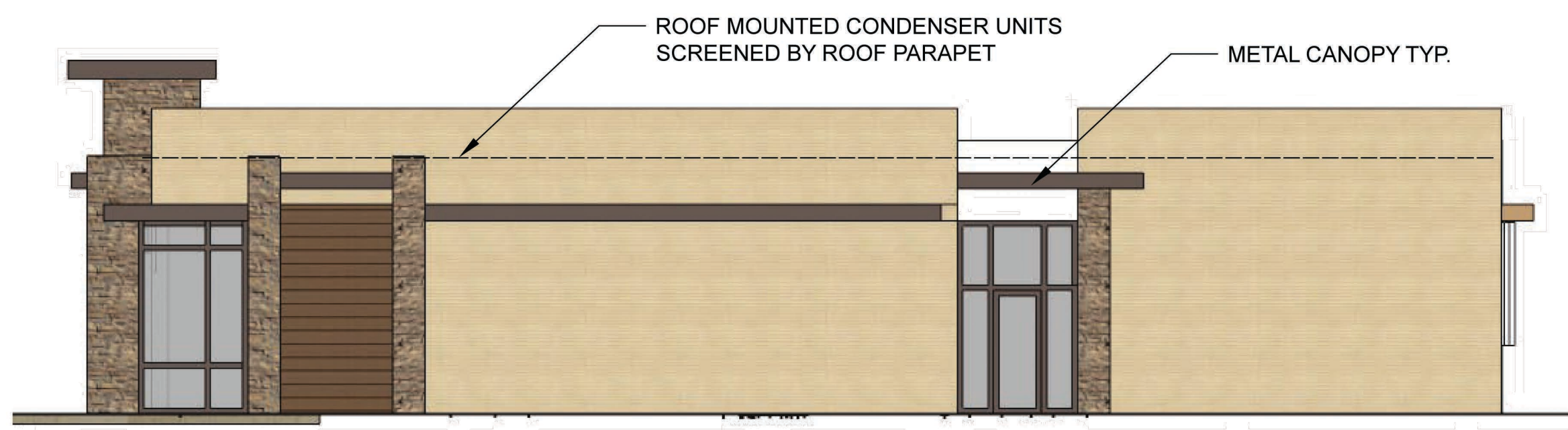
SP2015-003

MATERIAL SCHEDULE

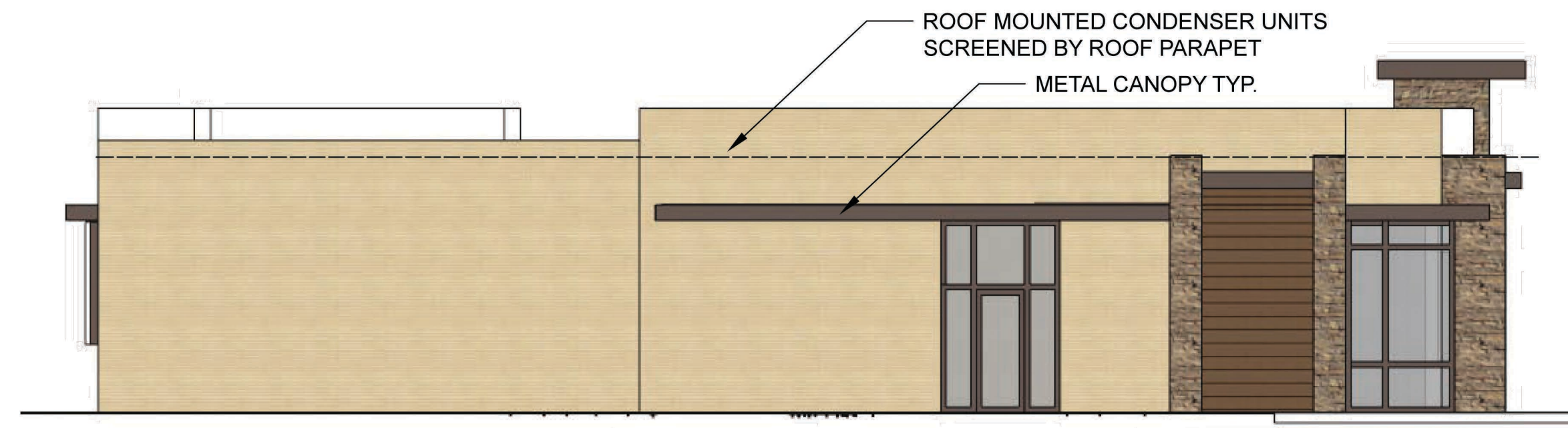
- 3 PART STUCCO -
- METAL CANOPY -
- WOOD SIDING -

BUILDING BRICK (B1)

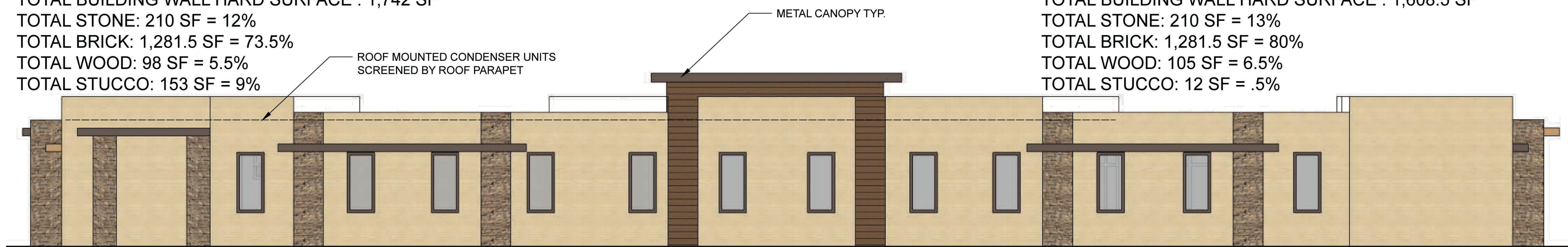
ELDORADO STONE
EUROPEAN LEDGE
IRON MILL



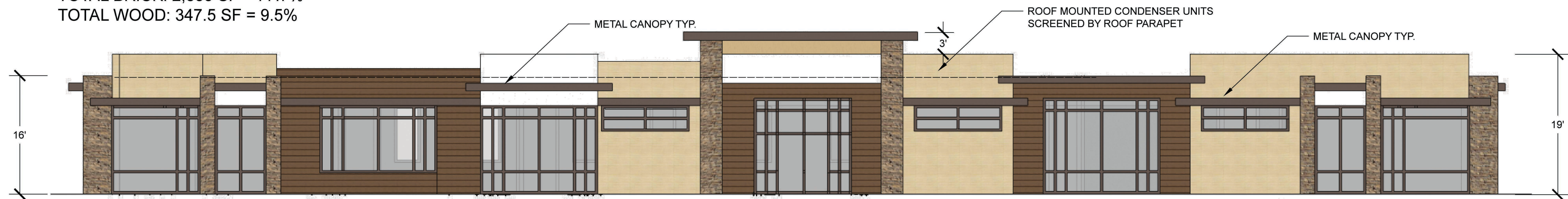
3 EAST ELEVATION
SCALE: 1/8" = 1'-0"
TOTAL BUILDING WALL HARD SURFACE : 1,742 SF
TOTAL STONE: 210 SF = 12%
TOTAL BRICK: 1,281.5 SF = 73.5%
TOTAL WOOD: 98 SF = 5.5%
TOTAL STUCCO: 153 SF = 9%



4 WEST ELEVATION
SCALE: 1/8" = 1'-0"
TOTAL BUILDING WALL HARD SURFACE : 1,608.5 SF
TOTAL STONE: 210 SF = 13%
TOTAL BRICK: 1,281.5 SF = 80%
TOTAL WOOD: 105 SF = 6.5%
TOTAL STUCCO: 12 SF = .5%



2 NORTH ELEVATION
SCALE: 1/8" = 1'-0"
TOTAL BUILDING WALL HARD SURFACE : 2,141.5 SF
TOTAL STONE: 467 SF = 12.8%
TOTAL BRICK: 2,835 SF = 77.7%
TOTAL WOOD: 347.5 SF = 9.5%



1 SOUTH ELEVATION - SUMMER LEE
SCALE: 1/8" = 1'-0"
TOTAL BUILDING WALL HARD SURFACE : 2,141.5 SF
TOTAL STONE: 430 SF = 20%
TOTAL BRICK: 915.5 SF = 42.7%
TOTAL WOOD: 600 SF = 28%
TOTAL STUCCO: 196 SF = 9.3%

Mar 03, 2015 - 2:15pm User: jimmystrohmeier /Users/jimmystrohmeier/Documents/OSD-Elevations.dwg

LANDSCAPING GENERAL NOTES:

1. NO LANDSCAPING TREES SHALL BE WITHIN 5' OF ANY UTILITY.
2. A MINIMUM CLEARANCE OF 5' SHALL BE MAINTAINED BETWEEN LANDSCAPING AND FIRE HYDRANTS.
3. IRRIGATION SHALL BE IN ACCORDANCE WITH THE UNIFORM DEVELOPMENT CODE.

IMPERVIOUS AREA / LANDSCAPING CALCULATION:

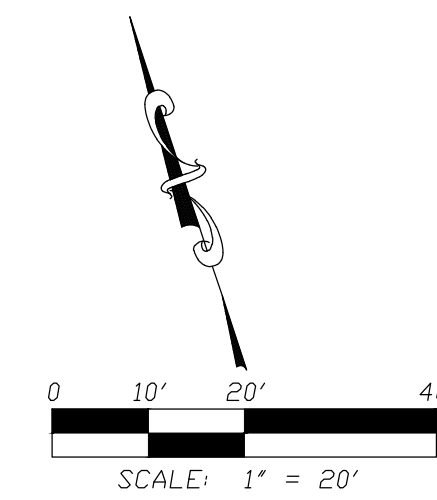
IMPERVIOUS AREA: 32,012 S.F.
 REQUIREMENT: IF IMPERVIOUS AREA IS GREATER THAN 20,000 S.F., 1 TREE REQUIRED PER 10 PARKING SPACES
 71 PARKING SPACES
 7 TREES REQUIRED; 10 PROVIDED

LANDSCAPING GENERAL REQUIREMENTS AND SCHEDULE:

- ROCKWELL CODE OF ORDINANCES, ARTICLE VIII - LANDSCAPING STANDARDS
 LAND DEVELOPMENT DISTRICT: PD-9
- REQUIREMENT: 15% TOTAL SITE TO BE LANDSCAPED. SITE AREA = 70,132 S.F.; LANDSCAPING AREA REQUIRED = 10,520 S.F.; LANDSCAPING AREA PROVIDED = 13,220 S.F.
- SITE LANDSCAPING REQUIREMENTS & SCHEDULE:**
1. CANOPY TREES OF THE FOLLOWING VARIETY ARE ACCEPTABLE: CEDAR ELM, TEXAS RED OAK, HOMESTEAD ELM, LACE BARK ELM, BALD CYPRESS, CHINESE PISTACHIO, OCTOBER GLORY MAPLE, PECAN, TEXAS ASH, LIVE OAK, CHINQUAPIN OAK, BURR OAK. 3" CALIPER, 60 GALLON, 12'-14' HEIGHT.
 2. UNDERSTORY ORNAMENTAL TREES OF THE FOLLOWING VARIETY ARE ACCEPTABLE: TEXAS REDBUD, MEXICAN PLUM, DOWNY HAWTHORN, WAX MYRTLE YAUPON, DECIDUOUS YAUPON. 3" CALIPER, 60 GALLON, 8'-10' HEIGHT.
 3. SHRUBS SHALL BE 3 GALLON EVERBLOOMING ROSE AND 7 GALLON EDWARD GOUICHER ABELIA.
 4. PERENNIAL ORNAMENTAL GRASS SHALL BE HAMELIN 1 GALLON FOUNTAIN GRASS.
 5. PERENNIALS SHALL BE 1 GALLON RED VELVET EVERGREEN DAYLILLIES AND 1 GALLON WHITE LANTANA TRAILING.
 6. WHERE NOTED, AREAS SHALL BE SOLID SODDED WITH BERMUDA GRASS.

LEGEND

- CANOPY TREE
- ORNAMENTAL TREE
- ⊗ SHRUB
- ⊙ GROUND COVER
- ⊕ PERENNIAL
- BG BERMUDA GRASS



SUMMER LEE DRIVE
 (CONCRETE PAVEMENT)

ORTHOPAEDIC SPECIALISTS OF DALLAS

NEW SINGLE STORY BUILDING
 14,200 S.F.
 FFE=570.00

1 - LANDSCAPING PLAN
 SCALE: 1" = 20'

STROHMEYER
 ARCHITECTS INC.

Consultants:

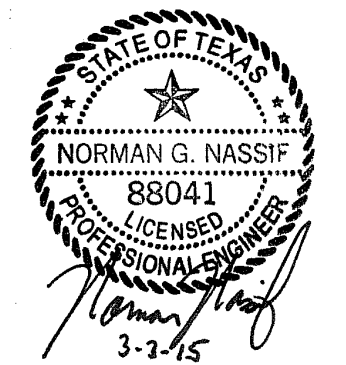
Nassif Engineering & Architecture, LLC



TXBPE Registration No. : F-16335
 TBAE Registration No. : BR400

Copyright 2015 Nassif Engineering & Architecture, LLC

ISSUED FOR DEVELOPMENT REVIEW



ORTHOPAEDIC SPECIALISTS OF DALLAS

ROCKWALL, TX 75032

Project Number: 15-117
 Drawing Date: 2/13/2015
 Drawn:
 Checked:
 Scale: AS SHOWN
 ACAD File:
 Copyright 2015 Strohmeyer Architects, Inc.

Revisions:

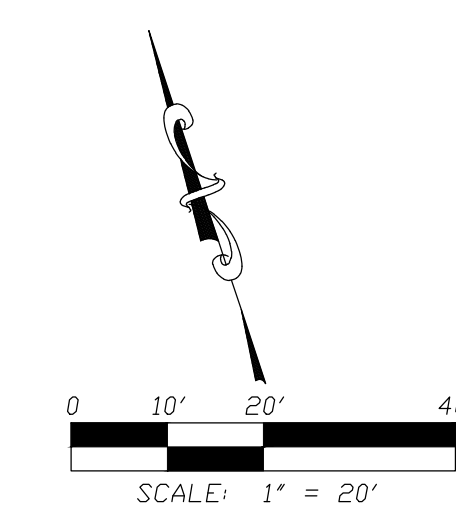
3/3/2015 - Revisions per Rockwall Development Review (2/20/2015)

Sheet Title:
LANDSCAPING PLAN
L-101

Luminaire Schedule						
Symbol	Qty	Label	Arrangement	Total Lamp Lumens	LLF	Description
	1	S	SINGLE	N.A.	0.912	IST-B02-LED-E1-BL4
	3	S1	SINGLE	N.A.	0.912	GLEON-AE-03-LED-E1-SL3
	1	WPA	SINGLE	N.A.	0.864	IST-B02-LED-E1-BL3
	4	WPB	SINGLE	N.A.	0.864	IST-B02-LED-E1-BL4

Calculation Summary									
Label	CalcType	Units	Avg	Max	Min	Avg/Min	Max/Min	PtSpLr	PtSpTb
Property Line @Finished Grade	Illuminance	Fc	0.25	5.9	0.0	N.A.	N.A.	20	N.A.
Site @Finished Grade	Illuminance	Fc	1.22	5.1	0.1	12.20	51.00	10	10

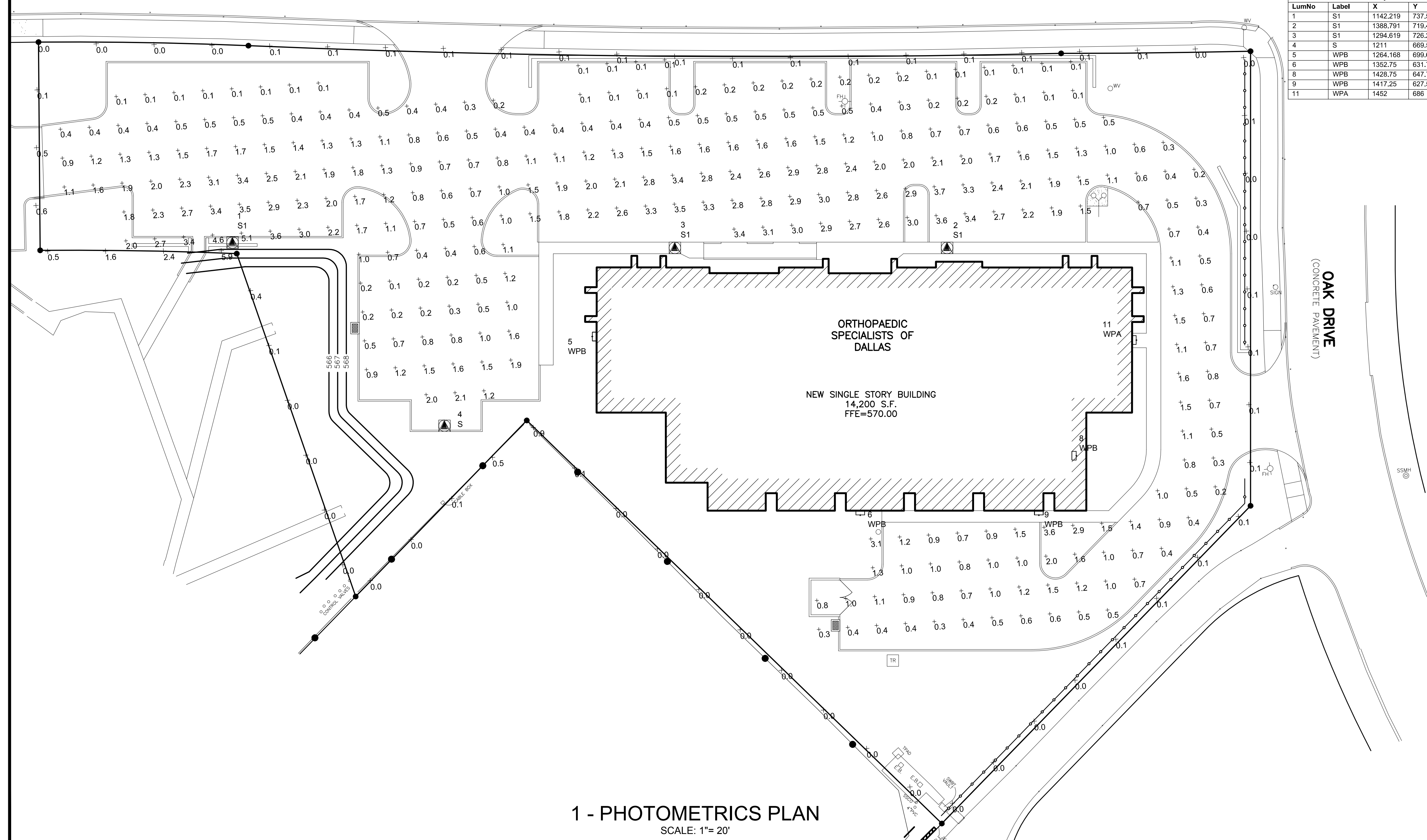
Object Summary		
Label	Type	Description
Building	Polygon-Flat	Assumed Reflectance: .3



SUMMER LEE DRIVE
(CONCRETE PAVEMENT)

20' Pole + 2.5' Base (below grade) = 20' mounting height above finished grade

Luminaire Location Summary						
LumNo	Label	X	Y	Z	Orient	Tilt
1	S1	1142.219	737.579	22.5	90	0
2	S1	1388.791	719.465	22.5	90	0
3	S1	1294.619	726.264	22.5	90	0
4	S	1211	669.5	15	90	0
5	WPB	1264.168	699.605	15	180	0
6	WPB	1352.75	631.75	15	270	0
8	WPB	1428.75	647.75	15	0	0
9	WPB	1417.25	627.5	15	270	0
11	WPA	1452	686	15	0.573	0



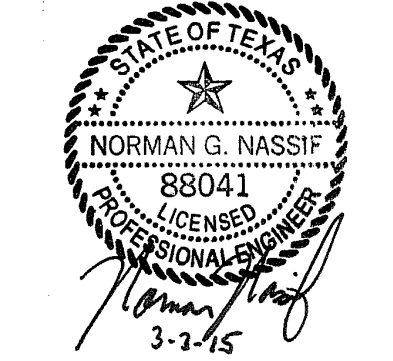
1 - PHOTOMETRICS PLAN
SCALE: 1" = 20'

Consultants:
Nassif Engineering & Architecture, LLC



TXBPE Registration No. : F-16335
TBAE Registration No. : BR400
Copyright 2015 Nassif Engineering & Architecture, LLC

ISSUED FOR DEVELOPMENT REVIEW



ORTHOPAEDIC SPECIALISTS OF DALLAS

ROCKWALL, TX 75032

Project Number: 15-117
Drawing Date: 2/13/2015
Drawn:
Checked:
Scale: AS SHOWN
ACAD File:
Copyright 2015 Strohmeyer Architects, Inc.

Revisions:	
3/3/2015	- Revisions per Rockwall Development Review (2/20/2015)

Sheet Title:
PHOTOMETRICS PLAN
PH-101

DESCRIPTION

The Galleon™ LED luminaire delivers exceptional performance in a highly scalable, low-profile design. Patented, high-efficiency AccuLED Optics™ system provides uniform and energy conscious illumination to walkways, parking lots, roadways, building areas and security lighting applications. IP66 rated.

Catalog #		Type
Project		
Comments		Date
Prepared by		

SPECIFICATION FEATURES

Construction

Extruded aluminum driver enclosure thermally isolated from Light Squares for optimal thermal performance. Heavy-wall, die-cast aluminum end caps enclose housing and die-cast aluminum heat sinks. A unique, patent pending interlocking housing and heat sink provides scalability with superior structural rigidity. 3G vibration tested. Optional tool-less hardware available for ease of entry into electrical chamber. Housing is IP66 rated.

Optics

Choice of 16 patented, high-efficiency AccuLED Optics. The optics are precisely designed to shape the distribution maximizing efficiency and application spacing. AccuLED Optics create consistent distributions with the scalability to meet customized application requirements. Offered standard in 4000K (+/- 275K) CCT and minimum 70 CRI. Optional 6000K CCT and 3000K CCT. For the ultimate level of spill light control, an optional house side shield accessory can

be field or factory installed. The house side shield is designed to seamlessly integrate with the SL2, SL3, SL4 or AFL optics.

Electrical

LED drivers are mounted to removable tray assembly for ease of maintenance. 120-277V 50/60Hz, 347V 60Hz or 480V 60Hz operation. Standard with 0-10V dimming. Shipped standard with Cooper Lighting proprietary circuit module designed to withstand 10kV of transient line surge. The Galleon LED luminaire is suitable for operation in -40°C to 40°C ambient environments. For applications with ambient temperatures exceeding 40°C, specify the HA (High Ambient) option. Light Squares are IP66 rated. Greater than 90% lumen maintenance expected at 60,000 hours. Available in standard 1A drive current and optional 530mA and 700mA drive currents.

Mounting

Extruded aluminum arm includes internal bolt guides allowing for

easy positioning of fixture during assembly. Designed for pole or wall mounting. When mounting two or more luminaires at 90° or 120° apart, the EA extended arm may be required. Refer to the arm mounting requirement table on page 3. For wall mounting, specify wall mount bracket option. 3G vibration rated.

Finish

Housing finished in super durable TGIC polyester powder coat paint, 2.5 mil nominal thickness for superior protection against fade and wear. Heat sink is powder coated black. Standard colors include black, bronze, grey, white, dark platinum and graphite metallic. RAL and custom color matches available. Consult the McGraw-Edison Architectural Colors brochure for the complete selection.

Warranty

Five-year warranty.



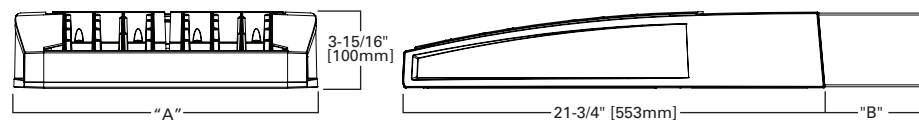
GLEON GALLEON LED

1-10 Light Squares
Solid State LED

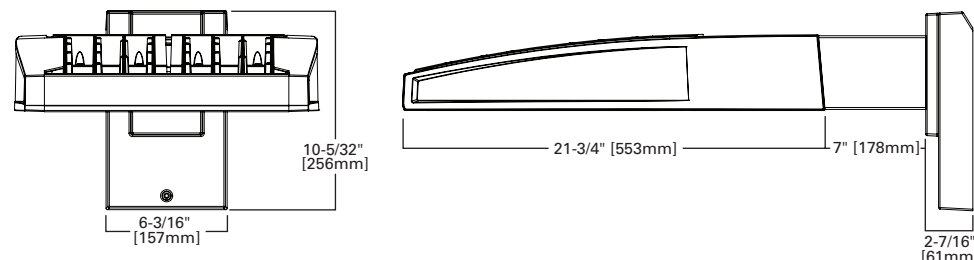
AREA/SITE LUMINAIRE

DIMENSIONS

POLE MOUNT



WALL MOUNT



DIMENSION DATA

Number of Light Squares	"A" Width	"B" Standard Arm Length	"B" Optional Arm Length ¹	Weight with Arm (lbs.)	EPA with Arm ² (Sq. Ft.)
1-4	15-1/2" (394mm)	7" (178mm)	10" (254mm)	33 (15.0 kgs.)	0.96
5-6	21-5/8" (549mm)	7" (178mm)	10" (254mm)	44 (20.0 kgs.)	1.00
7-8	27-5/8" (702mm)	7" (178mm)	13" (330mm)	54 (24.5 kgs.)	1.07
9-10	33-3/4" (857mm)	7" (178mm)	16" (406mm)	63 (28.6 kgs.)	1.12

NOTES: 1. Optional arm length to be used when mounting two fixtures at 90° on a single pole. 2. EPA calculated with optional arm length.

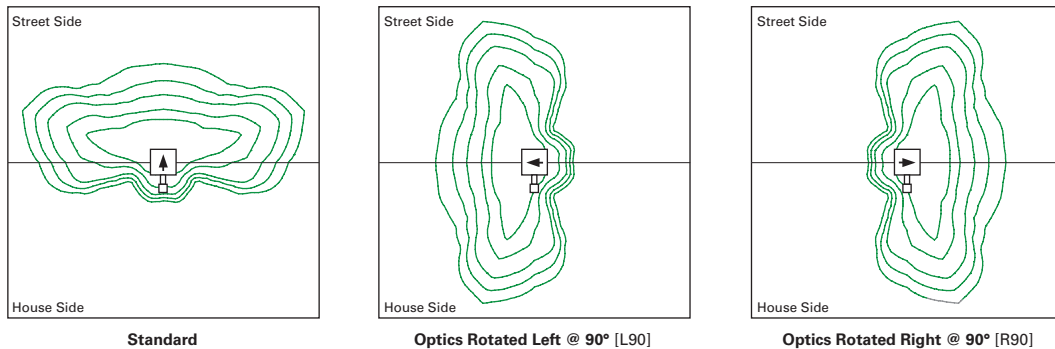
CERTIFICATION DATA

UL/cUL Wet Location Listed
ISO 9001
LM79 / LM80 Compliant
3G Vibration Rated
ARRA Compliant
IP66 Rated

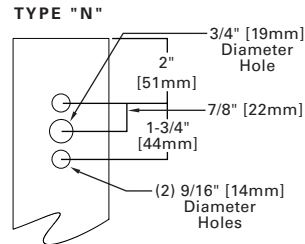
ENERGY DATA

Electronic LED Driver
>0.9 Power Factor
<20% Total Harmonic Distortion
120V-277V 50/60Hz
347V & 480V 60Hz
-40°C Min. Temperature
40°C Max. Temperature
50°C Max. Temperature (HA Option)

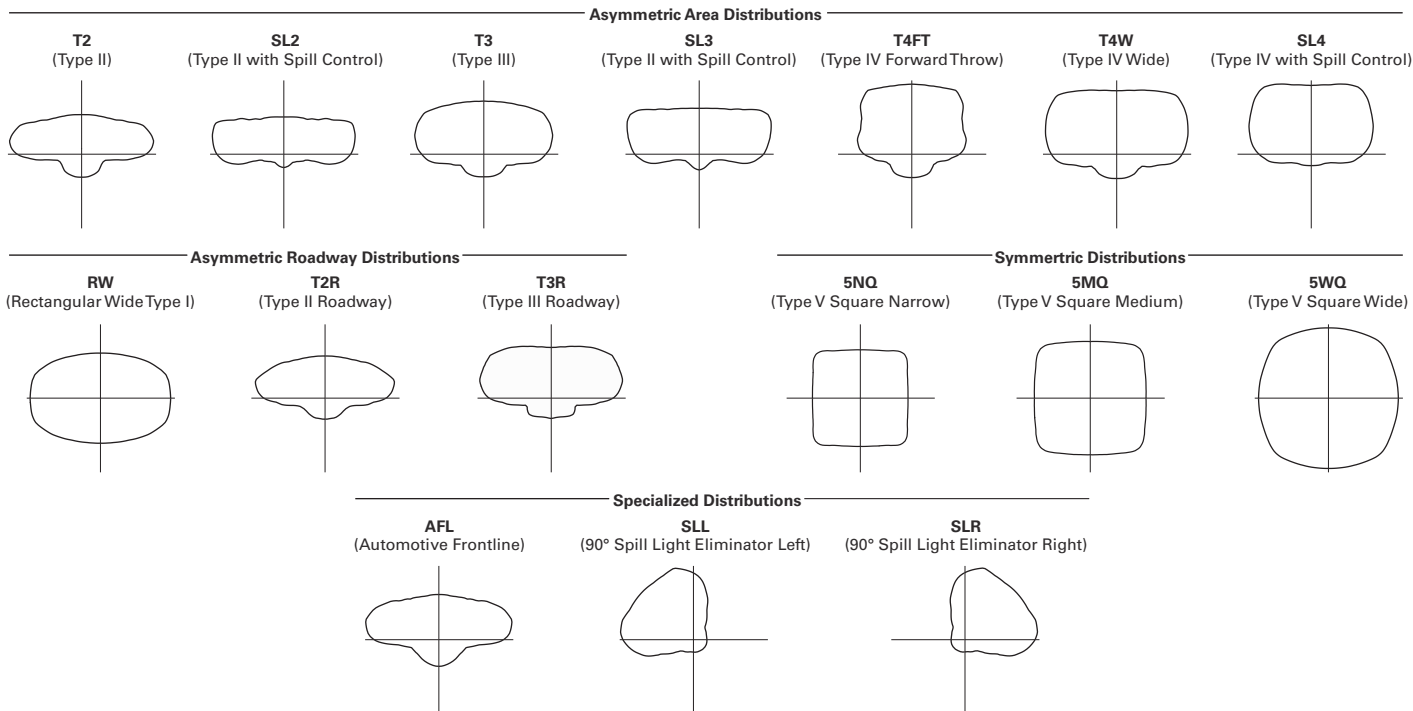
OPTIC ORIENTATION



DRILLING PATTERN

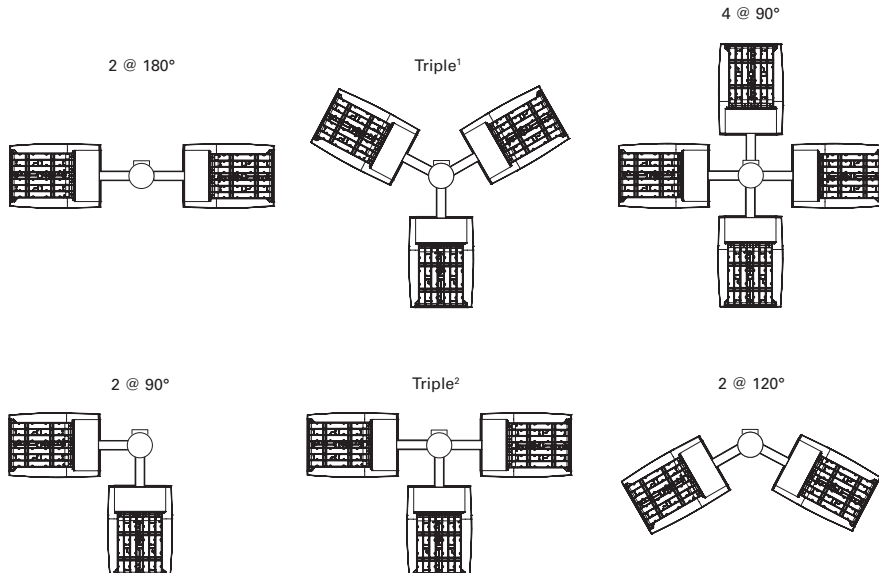


OPTICAL DISTRIBUTIONS



ARM MOUNTING REQUIREMENTS

Configuration	90° Apart	120° Apart
GLEON-AE-01	7" Arm (Standard)	7" Arm (Standard)
GLEON-AE-02	7" Arm (Standard)	7" Arm (Standard)
GLEON-AE-03	7" Arm (Standard)	7" Arm (Standard)
GLEON-AE-04	7" Arm (Standard)	7" Arm (Standard)
GLEON-AE-05	10" Extended Arm (Required)	7" Arm (Standard)
GLEON-AE-06	10" Extended Arm (Required)	7" Arm (Standard)
GLEON-AE-07	13" Extended Arm (Required)	13" Extended Arm (Required)
GLEON-AE-08	13" Extended Arm (Required)	13" Extended Arm (Required)
GLEON-AE-09	16" Extended Arm (Required)	16" Extended Arm (Required)
GLEON-AE-10	16" Extended Arm (Required)	16" Extended Arm (Required)



NOMINAL POWER AND LUMENS (1A)

Number of Light Squares	1	2	3	4	5	6	7	8	9	10	
Drive Current	1A	1A	1A	1A	1A	1A	1A	1A	1A	1A	
Nominal Power (Watts)	56	107	157	213	264	315	370	421	475	528	
Input Current @ 120V (A)	0.47	0.90	1.31	1.79	2.21	2.64	3.09	3.51	3.96	4.41	
Input Current @ 208V (A)	0.28	0.51	0.74	1.02	1.25	1.48	1.76	1.99	2.22	2.50	
Input Current @ 240V (A)	0.25	0.45	0.65	0.90	1.10	1.30	1.55	1.75	1.95	2.20	
Input Current @ 277V (A)	0.23	0.41	0.59	0.82	1.00	1.18	1.41	1.59	1.77	2.00	
Optics											
T2	Lumens	5,272	10,303	15,373	20,313	25,168	30,118	35,618	40,357	45,018	49,842
	BUG Rating	B1-U0-G1	B2-U0-G2	B2-U0-G2	B3-U0-G3	B3-U0-G4	B3-U0-G4	B3-U0-G4	B3-U0-G5	B4-U0-G5	B4-U0-G5
T2R	Lumens	5,597	10,938	16,321	21,565	26,719	31,974	37,813	42,844	47,792	52,914
	BUG Rating	B1-U0-G1	B2-U0-G2	B2-U0-G2	B3-U0-G3	B3-U0-G3	B3-U0-G4	B3-U0-G4	B3-U0-G4	B4-U0-G4	B4-U0-G5
T3	Lumens	5,374	10,501	15,669	20,704	25,652	30,697	36,303	41,134	45,884	50,802
	BUG Rating	B1-U0-G2	B2-U0-G2	B2-U0-G3	B3-U0-G3	B3-U0-G4	B3-U0-G4	B3-U0-G5	B3-U0-G5	B4-U0-G5	B4-U0-G5
T3R	Lumens	5,493	10,735	16,017	21,164	26,222	31,379	37,110	42,048	46,904	51,930
	BUG Rating	B1-U0-G2	B1-U0-G2	B2-U0-G3	B2-U0-G4	B3-U0-G4	B3-U0-G4	B3-U0-G5	B3-U0-G5	B3-U0-G5	B3-U0-G5
T4FT	Lumens	5,405	10,562	15,760	20,824	25,801	30,875	36,514	41,372	46,150	51,096
	BUG Rating	B1-U0-G2	B2-U0-G2	B2-U0-G3	B3-U0-G4	B3-U0-G4	B3-U0-G5	B3-U0-G5	B3-U0-G5	B3-U0-G5	B3-U0-G5
T4W	Lumens	5,335	10,426	15,556	20,555	25,468	30,476	36,042	40,838	45,554	50,436
	BUG Rating	B1-U0-G2	B2-U0-G2	B2-U0-G3	B3-U0-G4	B3-U0-G4	B3-U0-G5	B3-U0-G5	B4-U0-G5	B4-U0-G5	B4-U0-G5
SL2	Lumens	5,263	10,285	15,347	20,278	25,124	30,066	35,556	40,288	44,940	49,756
	BUG Rating	B1-U0-G2	B2-U0-G2	B2-U0-G3	B3-U0-G3	B3-U0-G4	B3-U0-G4	B3-U0-G5	B3-U0-G5	B4-U0-G5	B4-U0-G5
SL3	Lumens	5,373	10,500	15,667	20,701	25,649	30,693	36,298	41,128	45,878	50,794
	BUG Rating	B1-U0-G2	B2-U0-G3	B2-U0-G3	B3-U0-G4	B3-U0-G4	B3-U0-G4	B3-U0-G5	B3-U0-G5	B3-U0-G5	B3-U0-G5
SL4	Lumens	5,105	9,976	14,886	19,669	24,370	29,163	34,488	39,078	43,591	48,262
	BUG Rating	B1-U0-G2	B1-U0-G3	B1-U0-G3	B2-U0-G4	B2-U0-G4	B2-U0-G5	B3-U0-G5	B3-U0-G5	B3-U0-G5	B3-U0-G5
5NQ	Lumens	5,542	10,830	16,160	21,352	26,455	31,658	37,439	42,421	47,320	52,392
	BUG Rating	B2-U0-G1	B3-U0-G1	B3-U0-G2	B4-U0-G2	B4-U0-G2	B5-U0-G2	B5-U0-G3	B5-U0-G3	B5-U0-G3	B5-U0-G4
5MQ	Lumens	5,644	11,029	16,457	21,745	26,942	32,241	38,128	43,202	48,191	53,356
	BUG Rating	B3-U0-G1	B4-U0-G2	B4-U0-G2	B5-U0-G3	B5-U0-G3	B5-U0-G4	B5-U0-G4	B5-U0-G4	B5-U0-G4	B5-U0-G5
5WQ	Lumens	5,659	11,059	16,501	21,803	27,014	32,327	38,230	43,317	48,320	53,498
	BUG Rating	B3-U0-G1	B4-U0-G2	B4-U0-G2	B5-U0-G3	B5-U0-G4	B5-U0-G4	B5-U0-G4	B5-U0-G5	B5-U0-G5	B5-U0-G5
SLL/SLR	Lumens	4,722	9,227	13,767	18,191	22,539	26,971	31,897	36,141	40,315	44,635
	BUG Rating	B1-U0-G2	B1-U0-G3	B2-U0-G3	B2-U0-G3	B3-U0-G4	B3-U0-G4	B3-U0-G5	B3-U0-G5	B3-U0-G5	B3-U0-G5
RW	Lumens	5,492	10,732	16,014	21,159	26,216	31,372	37,101	42,038	46,893	51,918
	BUG Rating	B2-U0-G1	B3-U0-G1	B4-U0-G2	B4-U0-G2	B4-U0-G2	B5-U0-G3	B5-U0-G3	B5-U0-G3	B5-U0-G4	B5-U0-G4
AFL	Lumens	5,512	10,771	16,072	21,236	26,311	31,486	37,236	42,191	47,063	52,107
	BUG Rating	B1-U0-G1	B1-U0-G1	B2-U0-G2	B2-U0-G2	B3-U0-G3	B3-U0-G3	B3-U0-G3	B3-U0-G3	B3-U0-G3	B3-U0-G4

* Nominal data for 4000K CCT.

NOMINAL POWER AND LUMENS (700MA)

Number of Light Squares	1	2	3	4	5	6	7	8	9	10	
Drive Current	700mA	700mA	700mA	700mA	700mA	700mA	700mA	700mA	700mA	700mA	
Nominal Power (Watts)	38	72	105	138	176	210	243	276	314	348	
Input Current @ 120V (A)	0.32	0.59	0.86	1.14	1.45	1.72	2	2.28	2.58	2.86	
Input Current @ 208V (A)	0.21	0.36	0.51	0.67	0.87	1.02	1.18	1.34	1.53	1.69	
Input Current @ 240V (A)	0.19	0.32	0.45	0.59	0.77	0.90	1.04	1.18	1.35	1.49	
Input Current @ 277V (A)	0.20	0.29	0.40	0.51	0.69	0.80	0.91	1.02	1.20	1.31	
Optics											
T2	Lumens	3,854	7,531	11,237	14,847	18,395	22,013	26,033	29,497	32,904	36,430
	BUG Rating	B1-U0-G1	B1-U0-G2	B2-U0-G2	B2-U0-G2	B3-U0-G3	B3-U0-G3	B3-U0-G4	B3-U0-G4	B3-U0-G4	B3-U0-G4
T2R	Lumens	4,091	7,995	11,929	15,762	19,529	23,370	27,638	31,316	34,932	38,676
	BUG Rating	B1-U0-G1	B1-U0-G2	B2-U0-G2	B2-U0-G2	B3-U0-G3	B3-U0-G3	B3-U0-G3	B3-U0-G4	B3-U0-G4	B3-U0-G4
T3	Lumens	3,928	7,676	11,453	15,133	18,750	22,437	26,534	30,065	33,537	37,132
	BUG Rating	B1-U0-G1	B1-U0-G2	B2-U0-G2	B2-U0-G3	B3-U0-G3	B3-U0-G4	B3-U0-G4	B3-U0-G4	B3-U0-G4	B3-U0-G5
T3R	Lumens	4,015	7,846	11,707	15,469	19,166	22,936	27,124	30,733	34,283	37,957
	BUG Rating	B1-U0-G1	B1-U0-G2	B2-U0-G2	B2-U0-G3	B2-U0-G3	B3-U0-G4	B3-U0-G4	B3-U0-G4	B3-U0-G5	B3-U0-G5
T4FT	Lumens	3,951	7,720	11,519	15,221	18,858	22,567	26,688	30,240	33,732	37,347
	BUG Rating	B1-U0-G1	B1-U0-G2	B2-U0-G2	B2-U0-G3	B2-U0-G4	B3-U0-G4	B3-U0-G4	B3-U0-G5	B3-U0-G5	B3-U0-G5
T4W	Lumens	3,900	7,620	11,370	15,024	18,615	22,276	26,343	29,849	33,296	36,864
	BUG Rating	B1-U0-G1	B1-U0-G2	B2-U0-G2	B2-U0-G3	B3-U0-G4	B3-U0-G4	B3-U0-G4	B3-U0-G5	B3-U0-G5	B3-U0-G5
SL2	Lumens	3,847	7,518	11,217	14,821	18,364	21,975	25,988	29,447	32,847	36,368
	BUG Rating	B1-U0-G1	B1-U0-G2	B2-U0-G3	B2-U0-G3	B3-U0-G3	B3-U0-G4	B3-U0-G4	B3-U0-G4	B3-U0-G4	B3-U0-G5
SL3	Lumens	3,927	7,675	11,451	15,131	18,747	22,434	26,531	30,061	33,533	37,126
	BUG Rating	B1-U0-G1	B1-U0-G2	B2-U0-G3	B2-U0-G3	B2-U0-G3	B3-U0-G4	B3-U0-G4	B3-U0-G4	B3-U0-G5	B3-U0-G5
SL4	Lumens	3,731	7,292	10,880	14,376	17,812	21,315	25,208	28,562	31,861	35,275
	BUG Rating	B1-U0-G2	B1-U0-G2	B1-U0-G3	B1-U0-G3	B2-U0-G4	B2-U0-G4	B2-U0-G4	B2-U0-G5	B2-U0-G5	B3-U0-G5
5NQ	Lumens	4,051	7,916	11,811	15,606	19,336	23,139	27,365	31,006	34,587	38,294
	BUG Rating	B2-U0-G1	B3-U0-G1	B3-U0-G1	B3-U0-G2	B4-U0-G2	B4-U0-G2	B4-U0-G2	B5-U0-G2	B5-U0-G3	B5-U0-G3
5MQ	Lumens	4,125	8,062	12,029	15,894	19,692	23,565	27,869	31,577	35,224	38,999
	BUG Rating	B2-U0-G1	B3-U0-G2	B4-U0-G2	B4-U0-G2	B4-U0-G2	B5-U0-G3	B5-U0-G3	B5-U0-G3	B5-U0-G4	B5-U0-G4
5WQ	Lumens	4,136	8,083	12,061	15,936	19,745	23,628	27,943	31,661	35,318	39,103
	BUG Rating	B3-U0-G1	B3-U0-G2	B4-U0-G2	B4-U0-G2	B5-U0-G3	B5-U0-G3	B5-U0-G4	B5-U0-G4	B5-U0-G4	B5-U0-G4
SLL/SLR	Lumens	3,451	6,744	10,063	13,296	16,474	19,714	23,314	26,416	29,467	32,625
	BUG Rating	B1-U0-G1	B1-U0-G2	B1-U0-G3	B2-U0-G3	B2-U0-G3	B2-U0-G4	B3-U0-G4	B3-U0-G4	B3-U0-G5	B3-U0-G5
RW	Lumens	4,014	7,844	11,704	15,465	19,162	22,930	27,118	30,726	34,274	37,948
	BUG Rating	B2-U0-G1	B3-U0-G1	B3-U0-G2	B4-U0-G2	B4-U0-G2	B4-U0-G2	B4-U0-G2	B5-U0-G3	B5-U0-G3	B5-U0-G3
AFL	Lumens	4,029	7,873	11,747	15,522	19,231	23,014	27,216	30,838	34,399	38,086
	BUG Rating	B1-U0-G1	B1-U0-G1	B2-U0-G2	B2-U0-G2	B2-U0-G2	B3-U0-G2	B3-U0-G3	B3-U0-G3	B3-U0-G3	B3-U0-G3

* Nominal data for 4000K CCT.

NOMINAL POWER AND LUMENS (530MA)

Number of Light Squares	1	2	3	4	5	6	7	8	9	10	
Drive Current	530mA	530mA	530mA	530mA	530mA	530mA	530mA	530mA	530mA	530mA	
Nominal Power (Watts)	30	54	80	105	130	159	184	209	234	259	
Input Current @ 120V (A)	0.25	0.45	0.66	0.86	1.07	1.32	1.52	1.72	1.93	2.14	
Input Current @ 208V (A)	0.17	0.28	0.39	0.51	0.63	0.78	0.9	1.02	1.14	1.26	
Input Current @ 240V (A)	0.17	0.25	0.35	0.45	0.55	0.70	0.80	0.90	1.00	1.10	
Input Current @ 277V (A)	0.19	0.24	0.32	0.40	0.49	0.64	0.72	0.80	0.89	0.98	
Optics											
T2	Lumens	3,079	6,017	8,978	11,862	14,697	17,588	20,800	23,567	26,289	29,106
	BUG Rating	B1-U0-G1	B1-U0-G2	B2-U0-G2	B2-U0-G2	B2-U0-G2	B3-U0-G3	B3-U0-G3	B3-U0-G3	B3-U0-G4	B3-U0-G4
T2R	Lumens	3,269	6,388	9,531	12,593	15,603	18,672	22,082	25,020	27,909	30,900
	BUG Rating	B1-U0-G1	B1-U0-G1	B1-U0-G2	B2-U0-G2	B2-U0-G2	B2-U0-G2	B3-U0-G3	B3-U0-G3	B3-U0-G3	B3-U0-G4
T3	Lumens	3,138	6,133	9,150	12,091	14,980	17,926	21,200	24,021	26,795	29,667
	BUG Rating	B1-U0-G1	B1-U0-G2	B2-U0-G2	B2-U0-G2	B2-U0-G3	B3-U0-G3	B3-U0-G3	B3-U0-G4	B3-U0-G4	B3-U0-G4
T3R	Lumens	3,208	6,269	9,354	12,359	15,313	18,325	21,671	24,555	27,390	30,326
	BUG Rating	B1-U0-G1	B1-U0-G2	B1-U0-G2	B2-U0-G2	B2-U0-G3	B2-U0-G3	B2-U0-G4	B3-U0-G4	B3-U0-G4	B3-U0-G4
T4FT	Lumens	3,156	6,168	9,203	12,161	15,067	18,030	21,323	24,160	26,950	29,839
	BUG Rating	B1-U0-G1	B1-U0-G2	B1-U0-G2	B2-U0-G2	B2-U0-G3	B2-U0-G3	B3-U0-G4	B3-U0-G4	B3-U0-G4	B3-U0-G5
T4W	Lumens	3,116	6,088	9,084	12,004	14,872	17,797	21,047	23,848	26,602	29,453
	BUG Rating	B1-U0-G1	B1-U0-G2	B2-U0-G2	B2-U0-G2	B2-U0-G3	B3-U0-G3	B3-U0-G4	B3-U0-G4	B3-U0-G4	B3-U0-G5
SL2	Lumens	3,074	6,006	8,962	11,842	14,672	17,558	20,764	23,527	26,244	29,056
	BUG Rating	B1-U0-G1	B1-U0-G2	B2-U0-G2	B2-U0-G3	B2-U0-G3	B3-U0-G3	B3-U0-G3	B3-U0-G4	B3-U0-G4	B3-U0-G4
SL3	Lumens	3,138	6,132	9,149	12,089	14,978	17,924	21,197	24,018	26,791	29,662
	BUG Rating	B1-U0-G1	B1-U0-G2	B1-U0-G2	B2-U0-G3	B2-U0-G3	B2-U0-G3	B3-U0-G4	B3-U0-G4	B3-U0-G4	B3-U0-G4
SL4	Lumens	2,981	5,826	8,693	11,486	14,231	17,030	20,140	22,820	25,456	28,184
	BUG Rating	B0-U0-G1	B1-U0-G2	B1-U0-G3	B1-U0-G3	B1-U0-G3	B2-U0-G3	B2-U0-G4	B2-U0-G4	B2-U0-G4	B2-U0-G5
5NQ	Lumens	3,236	6,324	9,437	12,469	15,449	18,487	21,863	24,773	27,634	30,595
	BUG Rating	B1-U0-G0	B2-U0-G1	B3-U0-G1	B3-U0-G2	B3-U0-G2	B4-U0-G2	B4-U0-G2	B4-U0-G2	B4-U0-G2	B5-U0-G2
5MQ	Lumens	3,296	6,441	9,610	12,698	15,733	18,828	22,266	25,229	28,142	31,158
	BUG Rating	B2-U0-G1	B3-U0-G1	B3-U0-G2	B4-U0-G2	B4-U0-G2	B4-U0-G2	B5-U0-G3	B5-U0-G3	B5-U0-G3	B5-U0-G3
5WQ	Lumens	3,305	6,458	9,636	12,732	15,775	18,878	22,325	25,296	28,217	31,241
	BUG Rating	B2-U0-G1	B3-U0-G2	B4-U0-G2	B4-U0-G2	B4-U0-G2	B5-U0-G3	B5-U0-G3	B5-U0-G3	B5-U0-G4	B5-U0-G4
SLL/SLR	Lumens	2,757	5,388	8,040	10,623	13,162	15,751	18,627	21,105	23,543	26,066
	BUG Rating	B1-U0-G1	B1-U0-G2	B1-U0-G2	B1-U0-G3	B2-U0-G3	B2-U0-G3	B2-U0-G3	B2-U0-G4	B3-U0-G4	B3-U0-G4
RW	Lumens	3,207	6,267	9,351	12,356	15,309	18,320	21,666	24,549	27,384	30,319
	BUG Rating	B2-U0-G1	B3-U0-G1	B3-U0-G1	B3-U0-G2	B4-U0-G2	B4-U0-G2	B4-U0-G2	B4-U0-G2	B4-U0-G2	B5-U0-G3
AFL	Lumens	3,219	6,290	9,385	12,401	15,365	18,387	21,745	24,638	27,484	30,429
	BUG Rating	B1-U0-G1	B1-U0-G1	B1-U0-G1	B2-U0-G2	B2-U0-G2	B2-U0-G2	B2-U0-G2	B3-U0-G2	B3-U0-G3	B3-U0-G3

* Nominal data for 4000K CCT.

LUMEN MULTIPLIER

Ambient Temperature	Lumen Multiplier
0°C	1.02
10°C	1.01
25°C	1.00
40°C	0.99
50°C	0.97

LUMEN MAINTENANCE

Ambient Temperature	TM-21 Lumen Maintenance (60,000 Hours)	Theoretical L70 (Hours)
25°C	> 94%	> 350,000
40°C	> 93%	> 250,000
50°C	> 90%	> 170,000

ORDERING INFORMATION

Sample Number: GLEON-AE-04-LED-E1-T3-GM-700

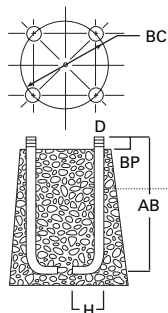
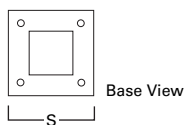
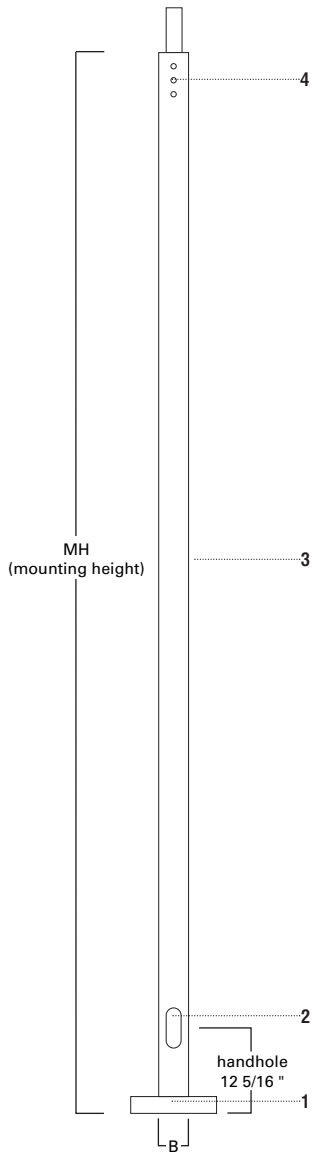
Product Family	Light Engine	Number of Light Squares ¹	Lamp Type	Voltage	Distribution	Color	Mounting
GLEON=Galleon	AE=1A Drive Current	01=1 02=2 03=3 04=4 05=5 06=6 07=7 08=8 09=9 10=10	LED=Solid State Light Emitting Diodes	E1=120-277V 347=347V ² 480=480V ²	T2=Type II T2R=Type II Roadway T3=Type III T3R=Type III Roadway T4FT=Type IV Forward Throw T4W=Type IV Wide 5NQ=Type V Narrow 5MQ=Type V Square Medium 5WQ=Type V Square Wide SL2=Type II w/Spill Control SL3=Type III w/Spill Control SL4=Type IV w/Spill Control SLL=90° Spill Light Eliminator Left SLR=90° Spill Light Eliminator Right RW=Rectangular Wide Type I AFL=Automotive Frontline	AP=Grey BZ=Bronze BK=Black DP=Dark Platinum GM=Graphite Metallic WH=White	[Blank]=Arm for Round or Square Pole EA=Extended Arm ³ MA=Mast Arm Adapter ⁴ WM=Wall Mount
Options (Add as Suffix)					Accessories (Order Separately)		
2L=Two Circuits ^{5,6} 7030=70 CRI 3000K ⁷ 7060=70 CRI 6000K ⁷ 530=Drive Current Factory Set to 530mA ⁸ 700=Drive Current Factory Set to 700mA ⁸ P=Button Type Photocontrol (120, 208, 240 or 277V) R=NEMA Twistlock Photocontrol Receptacle HA=50°C High Ambient ⁶ MS/DIM-L08=Motion Sensor for Dimming Operation, Maximum 8' Mounting Height ^{9,10,11,12} MS/DIM-L20=Motion Sensor for Dimming Operation, 9' - 20' Mounting Height ^{9,10,11,12} MS/DIM-L40=Motion Sensor for Dimming Operation, 21' - 40' Mounting Height ^{9,10,11,12} MS/X-L08=Bi-Level Motion Sensor, Maximum 8' Mounting Height ^{11,12,13,14} MS/X-L20=Bi-Level Motion Sensor, 9' - 20' Mounting Height ^{10,11,14} MS/X-L40=Bi-Level Motion Sensor, 21' - 40' Mounting Height ^{10,11,14} DIMRF-LW=LumaWatt Wireless Sensor, Wide Lens for 8' - 16' Mounting Height ¹³ DIMRF-LN=LumaWatt Wireless Sensor, Narrow Lens for 16' - 40' Mounting Height ¹³ L90=Optics Rotated 90° Left R90=Optics Rotated 90° Right MT=Factory Installed Mesh Top TH=Tool-less Door Hardware LCF=Light Square Trim Plate Painted to Match Housing HSS=Factory Installed House Side Shield ¹⁵					OA/RA1016=NEMA Photocontrol Multi-Tap - 105-285V OA/RA1027=NEMA Photocontrol - 480V OA/RA1201=NEMA Photocontrol - 347V OA/RA1013=Photocontrol Shorting Cap OA/RA1014=120V Photocontrol MA1252=10kV Surge Module Replacement MA1036-XX=Single Tenon Adapter for 2-3/8" O.D. Tenon MA1037-XX=2 @ 180° Tenon Adapter for 2-3/8" O.D. Tenon MA1197-XX=3 @ 120° Tenon Adapter for 2-3/8" O.D. Tenon MA1188-XX=4 @ 90° Tenon Adapter for 2-3/8" O.D. Tenon MA1189-XX=2 @ 90° Tenon Adapter for 2-3/8" O.D. Tenon MA1190-XX=3 @ 90° Tenon Adapter for 2-3/8" O.D. Tenon MA1191-XX=2 @ 120° Tenon Adapter for 2-3/8" O.D. Tenon MA1038-XX=Single Tenon Adapter for 3-1/2" O.D. Tenon MA1039-XX=2 @ 180° Tenon Adapter for 3-1/2" O.D. Tenon MA1192-XX=3 @ 120° Tenon Adapter for 3-1/2" O.D. Tenon MA1193-XX=4 @ 90° Tenon Adapter for 3-1/2" O.D. Tenon MA1194-XX=2 @ 90° Tenon Adapter for 3-1/2" O.D. Tenon MA1195-XX=3 @ 90° Tenon Adapter for 3-1/2" O.D. Tenon FSIR-100=Wireless Configuration Tool for Occupancy Sensor ¹⁶ GLEON-MT1=Field Installed Mesh Top for 1-4 Light Squares GLEON-MT2=Field Installed Mesh Top for 5-6 Light Squares GLEON-MT3=Field Installed Mesh Top for 7-8 Light Squares GLEON-MT4=Field Installed Mesh Top for 9-10 Light Squares LS/HSS=Field Installed House Side Shield ^{15,17}		

Notes:

- Standard 4000K CCT and minimum 70 CRI.
- LumaWatt Wireless Sensors not currently available for 347V or 480V applications.
- May be required when two or more luminaires are oriented on a 90° or 120° drilling pattern. Refer to arm mounting requirement table.
- Factory installed.
- Only available in 5-10 Light Squares.
- Not available with LumaWatt wireless sensors.
- Use dedicated IES files for 3000K and 6000K when performing layouts. These files are published on the Galleon luminaire product page on the website.
- 1 Amp standard. Use dedicated IES files for 530mA and 700mA when performing layouts. These files are published on the Navion luminaire product page on the website.
- Must specify dimming driver. Consult factory for more information.
- 120V or 277V 60Hz and 230V 50Hz only. Replace E1 with specific voltage. Consult factory for availability in 347V and 480V.
- The FSIR-100 accessory is required to adjust parameters.
- Not available with HA option.
- LumaWatt wireless sensors are factory installed only requiring network components RF-EM1, RF-GW1 and RF-ROUT1 in appropriate quantities. See www.cooperlighting.com for LumaWatt application information.
- Sensor mounted externally. Available in 2, 3, 4, or 6 Light Square configurations. Replace "X" with number of Light Squares in low output mode. For ON/OFF operation, replace "X" with "0". Maximum two Light Squares in low output mode. Not available with dimming driver. No terminal block with bi-level operation.
- Only for use with SL2, SL3, SL4 and AFL distributions. The Light Square trim plate is painted black when the HSS option is selected.
- This tool enables adjustment of parameters including high and low modes, sensitivity, time delay, cutoff and more. Consult your Eaton's Cooper Lighting business representative for additional details.
- One required for each Light Square.

SSS SQUARE STRAIGHT STEEL

10'—39' MOUNTING HEIGHT



SPECIFICATION FEATURES

- 1... ASTM Grade steel base plate with ASTM A366 base cover.
- 2... Hand hole assembly 3" x 5" on 5" and 6" pole; and 2" x 4" on 4" pole.
- 3... ASTM A500 grade "B" steel shaft. Shot blasted and painted with polyester powder coat.
- 4... Drilled or Tenon (specify).
- 5... Anchor bolt per ASTM A576 with (2) nuts, (2) flat washer, and (1) lock washer. Nuts, washers and threaded portion of bolt are hot dip galvanized. 3" hook for 3/4" bolt. 4" hook for 1" bolt.

FOUR BOLT ANCHORAGE [See ordering information]

- BC=Bolt Circle
- BP=Bolt Projection
- AB=Bolt Dimensions
- D=Bolt Diameter
- H=Bolt Dimensions

FINISH COLORS [See ordering information]

- F=Dark Bronze
- G=Galvanized
- V=Grey
- W=White
- Y=Black

WARNING: THE USE OF UNAUTHORIZED ACCESSORIES SUCH AS BANNERS, SIGNS OR PENNANTS FOR WHICH THE POLE WAS NOT DESIGNED FOR VOIDS THE COOPER LIGHTING WARRANTY AND MAY RESULT IN POLE FAILURE CAUSING SERIOUS INJURY OR PROPERTY DAMAGE. COOPER LIGHTING'S POLE WARRANTY IS ALSO VOIDED IF LUMINAIRE IS NOT INSTALLED AT TIME OF POLE INSTALLATION.

ORDERING INFORMATION

SAMPLE NUMBER: SSS5A20SFM1XG

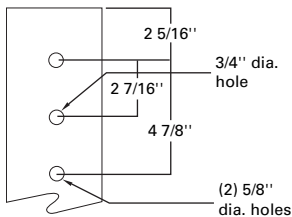
Square	Straight	Steel	Shaft ³ Size	Wall Thickness	Mounting Height (ft.)	Base Type	Finish	Fixture Mounting & Type	No. & Location of Arms	Arm Lengths	Accessories (Ground Lug)
S	S	S	5	A	20	S	F	M	1	X	G

Mtg. Height	Catalog ^{1,2} Number	Wall Thickness	Base Square (In.)	Bolt Circle Dia. (In.)	Bolt Proj. (In.)	Shaft Size (In.)	Anchor Bolt Dia. & Length (In.)	Net. Wt. (Lbs.)	EPA (Sq. Ft.) ⁴ At Pole Top			EPA (Sq. Ft.) ⁴ 2' Above Pole Top			Load—Include Bracket (Lbs.)		Max. Fixture Lug (Lbs.)
									70	80	90	100	70	80	90	100	
10	SSS4A10SF	.120	10 1/2	11.0	4 1/2	4	3/4 x 25 x 3	96	39.8	29.9	23.2	18.4	33.0	24.8	19.3	15.3	150
15	SSS4A15SF	.120	10 1/2	11.0	4 1/2	4	3/4 x 25 x 3	133	19.6	14.4	10.8	8.2	17.2	12.7	9.5	7.3	150
20	SSS4A20SF	.120	10 1/2	11.0	4 1/2	4	3/4 x 25 x 3	152	12.9	9.1	6.5	4.6	11.7	8.2	5.9	4.2	200
25	SSS4A25SF	.120	10 1/2	11.0	4 1/2	4	3/4 x 25 x 3	208	8.7	5.6	3.6	2.1	8.0	5.2	3.3	2.0	200
20	SSS5A20SF	.120	10 1/2	11.0	4 1/2	5	3/4 x 25 x 3	202	21.9	15.7	11.6	8.5	19.9	14.3	10.5	7.7	200
25	SSS5A25SF	.120	10 1/2	11.0	4 1/2	5	3/4 x 25 x 3	248	15.5	10.5	7.2	4.8	14.3	9.8	6.6	4.4	200
30	SSS5A30SF	.120	10 1/2	11.0	4 1/2	5	3/4 x 25 x 3	293	8.2	4.6	2.1	--	7.7	4.3	2.0	--	300
35	SSS5M35SF	.188	10 1/2	11.0	4 1/2	5	3/4 x 25 x 3	480	11.8	7.1	3.8	1.5	11.1	6.6	3.6	1.4	300
25	SSS6A25SF	.120	12 1/2	12.5	5	6	1 x 36 x 4	295	24.1	16.8	12.0	8.5	22.2	15.6	11.1	7.8	200
30	SSS6A30SF	.120	12 1/2	12.5	5	6	1 x 36 x 4	347	14.0	8.7	5.0	2.5	13.1	8.2	4.7	2.3	300
30	SSS6M30SF	.188	12 1/2	12.5	5	6	1 x 36 x 4	505	26.4	18.1	12.5	8.4	24.7	16.9	11.6	7.9	300
35	SSS6M35SF	.188	12 1/2	12.5	5	6	1 x 36 x 4	584	19.7	12.7	7.9	4.4	18.6	12.0	7.5	4.2	300
35	SSS6X35SF	.250	12 1/2	12.5	5	6	1 x 36 x 4	696	28.9	19.7	13.4	8.9	8.7	18.6	12.7	8.4	300
39	SSS6M39SF	.188	12 1/2	12.5	5	6	1 x 36 x 4	647	15.4	9.1	4.8	1.8	14.6	8.7	4.6	1.7	300
39	SSS6X39SF	.250	12 1/2	12.5	5	6	1 x 36 x 4	822	23.5	15.4	9.8	5.7	22.4	14.6	9.3	5.4	300

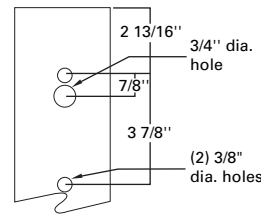
NOTES: 1 Catalog number includes pole with anchor bolts with double nuts (BEFORE INSTALLING ANCHOR BOLTS MAKE SURE PROPER ANCHOR BOLT TEMPLATE IS OBTAINED FROM COOPER LIGHTING).
 2 Tenon size or machining for rectangular arms must be specified. Hand hole is located 180° from single arm.
 3 Shaft size, base plate, anchor bolts and projections may vary slightly—all dimensions nominal.
 4 EPA's based on shaft properties with wind normal to flat. EPA's calculated using base wind velocity as indicated plus 30% gust factor.

DRILLING PATTERN

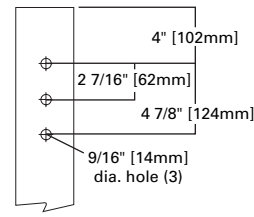
Type "M" [RCL, Landau, Galleria and Vision]



Type "E" [Concourse III]



Type "Z" [Credenza and Cirrus]



MACHINING FOR RECTANGULAR ARMS [Add as suffix]

Designation Letter & Number	Designation Letter & Number	Designation Letter & Number	Quantity & Location
M1	E1	Z1	Single
M2	E2	Z2	2 @ 180°
M3	E3	Z3	3 @ 120°
M4	E4	Z4	4 @ 90°
M5	E5	Z5	2 @ 90°
M6	E6	Z6	3 @ 90°
M7	E7	Z7	2 @ 120°

NOTES: Refer to Fixture Drilling Options on page 160.

MOUNTING OPTIONS [Add as suffix]

Fixed Tenon	Designation Number	O.D. (In.)	Length (In.)
	1	2 3/8	3 1/2
	2	2 3/8	4
	3	3 1/2	5
	9	3	4

ACCESSORIES

- A=1/2" tapped hub¹
- B=3/4" tapped hub¹
- C=Convenience outlet²
- G=Grounding lug (max. wire #8 AWG)
- H=Additional hand hole and cover—
12" below pole top—90° from hand hole.

NOTES: 1 Location is 3' above base—90° from hand hole.
 2 Outlet is located 4' above base and on same side of pole as hand hole, unless specified otherwise. Receptacle not included, provision only.

NOTE: Specifications and dimensions subject to change without notice.

DESCRIPTION

The TopTier™ parking garage, canopy and low-bay luminaire is an innovative solution that delivers an unparalleled combination of performance and visual comfort. The patented WaveStream™ optical technology blocks the line of sight from the LED light sources to the observer, while extracting the maximum amount of light on task. This approach results in a high level of uniformity and vertical footcandles that enhances safety in the application environment. The TopTier luminaire is UL/cUL listed for wet locations, IP66 and 3G vibration rated.

Catalog #		Type	
Project			
Comments		Date	
Prepared by			

SPECIFICATION FEATURES

Construction

One-piece, low copper die-cast aluminum housing provides a clean and symmetric housing. Formed aluminum top is sloped to prevent bird nesting. Metal electrical tray allows for easy electrical access for field servicing.

Optics

Unique optical distributions are accomplished using various combinations of reflective backing plates and WaveStream optical technology. The optical Waveguide is manufactured using precision injection molded acrylic. The optics contain features that form a repeatable and redundant pattern to direct light in a precisely prescribed distribution. For the ultimate level of glare control and visual comfort, specify the SG option which adds a Solite® glass lens that works in combination with the Waveguide lens and reflective backing plate. Offered standard in 4000K (+/- 275K) CCT, optional 3000K and 6000K. Minimum 70 CRI.

Electrical

LED driver(s) are mounted to metal electrical tray for optimal thermal performance. 120-277V 50/60Hz, 347V 60Hz or 480V 60Hz operation. Standard with 0-10V dimming driver(s), specify 5LTD for Fifth Light DALI driver(s) Shipped standard with Cooper Lighting proprietary circuit module designed to withstand 10kV of transient line surge. Greater than 90% lumen maintenance expected at 60,000 hours, based off LM-80 test data and TM-21. Suitable for ambient temperature applications from -40°C (-40°F) to 40°C (104°F). For 50°C (122°F) applications, specify the HA high ambient option. IP66 rated against the ingress of dust and water.

Mounting

Standard fixture mounts to a square or octagonal 4" surface or recessed j-box via heavy-gauge quick mount bracket. With the addition of a field supplied wet location j-box, the luminaire can be pendant mounted to a rigid or free swinging pendant. Optional mounting methods include trunnion mount and wall mount.

Finish

Housing finished in white Super durable TGIC polyester powder coat paint, 2.5 mil nominal thickness for superior protection against fade and wear. Optional colors include black, bronze, grey, dark platinum and graphite metallic. RAL and custom color matches available. Consult the McGraw-Edison Architectural Colors brochure for the complete selection.

Warranty

Five-year warranty.



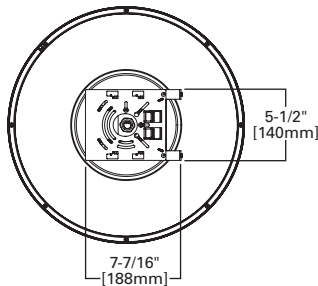
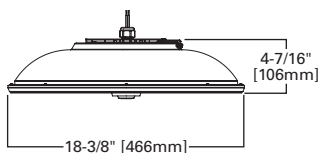
TT TOPTIER LED

Solid State LED

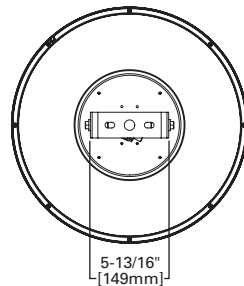
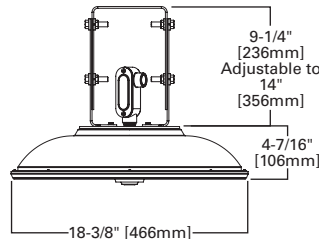
PARKING GARAGE/
CANOPY/
LOW-BAY LUMINAIRE

DIMENSIONS

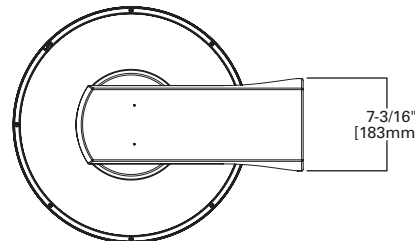
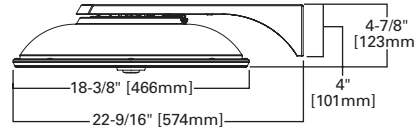
SURFACE OR PENDANT MOUNT



TRUNNION MOUNT



WALL MOUNT



CERTIFICATION DATA

UL/cUL Wet Location Listed
3G Vibration Rated
LM79 / LM80 Compliant
IP66 Rated
ISO 9001
DesignLights Consortium® Qualified*

ENERGY DATA

Electronic LED Driver
>0.9 Power Factor
<20% Total Harmonic Distortion
120-277V/50 & 60Hz, 347V/60Hz,
480V/60Hz
-40°C Min. Temperature
40°C Max. Temperature
50°C Max. Temperature (HA Option)

SHIPPING DATA

Approximate Net Weight:
16 lbs. (7.2 kgs.)

POWER AND LUMENS

Lumen Package		B1	B2	B3	B4	B5	B6	
Power (Wattage)		28	34	45	58	77	108	
Current @ 120V (A)		0.63	0.31	0.41	0.52	0.69	0.95	
Current @ 277V (A)		0.13	0.14	0.19	0.24	0.30	0.41	
3000K CCT	Lumens	CQ Concentrated	2,933	3,631	4,613	5,518	7,272	9,438
	Lumens per Watt		105	107	103	95	94	87
	BUG Rating		B1-U0-G1	B1-U0-G1	B2-U0-G1	B2-U0-G1	B2-U0-G1	B3-U0-G1
	Lumens	MQ Medium	2,890	3,577	4,545	5,436	7,165	9,298
	Lumens per Watt		103	105	101	94	93	86
	BUG Rating		B2-U0-G1	B2-U0-G1	B2-U0-G2	B2-U0-G2	B3-U0-G2	B3-U0-G2
	Lumens	WQ Wide	2,670	3,305	4,199	5,022	6,619	8,590
	Lumens per Watt		95	97	93	87	86	80
	BUG Rating		B2-U0-G1	B2-U0-G1	B2-U0-G2	B3-U0-G2	B3-U0-G2	B3-U0-G3
4000K CCT	Lumens	CQ Concentrated	3,334	4,133	5,581	7,198	8,730	11,138
	Lumens per Watt		119	122	124	124	113	103
	BUG Rating		B1-U0-G1	B2-U0-G1	B2-U0-G1	B2-U0-G1	B3-U0-G1	B3-U0-G2
	Lumens	MQ Medium	3,285	4,072	5,498	7,091	8,601	10,973
	Lumens per Watt		117	120	122	122	112	102
	BUG Rating		B2-U0-G1	B2-U0-G1	B2-U0-G2	B3-U0-G2	B3-U0-G2	B3-U0-G3
	Lumens	WQ Wide	3,035	3,762	5,079	6,551	7,946	10,137
	Lumens per Watt		108	111	113	113	103	94
	BUG Rating		B2-U0-G1	B2-U0-G2	B3-U0-G2	B3-U0-G2	B3-U0-G3	B3-U0-G3
6000K CCT	Lumens	CQ Concentrated	3,390	4,104	5,701	7,157	8,672	11,369
	Lumens per Watt		121	121	127	123	113	105
	BUG Rating		B1-U0-G1	B2-U0-G1	B2-U0-G1	B2-U0-G1	B3-U0-G1	B3-U0-G2
	Lumens	MQ Medium	3,339	4,043	5,617	7,051	8,544	11,201
	Lumens per Watt		119	119	125	122	111	104
	BUG Rating		B2-U0-G1	B2-U0-G1	B2-U0-G2	B3-U0-G2	B3-U0-G2	B3-U0-G3
	Lumens	WQ Wide	3,085	3,735	5,189	6,514	7,893	10,348
	Lumens per Watt		110	110	115	112	103	96
	BUG Rating		B2-U0-G1	B2-U0-G2	B3-U0-G2	B3-U0-G2	B3-U0-G3	B3-U0-G3

NOTE: Nominal data. For configurations that include glass or occupancy sensor options refer to the specific IES files for lumen output data.

LUMEN MAINTENANCE

Ambient Temperature	Lumen Maintenance				
	25,000 Hours	50,000 Hours	60,000 Hours TM-21 Rating	100,000 Hours	Theoretical L70 (Hours) Per TM-21 Data
B1 Lumen Package					
25°C	> 96%	> 95%	> 95%	> 93%	> 500,000
40°C	> 96%	> 94%	> 94%	> 93%	> 500,000
50°C	> 95%	> 94%	> 93%	> 93%	> 400,000
B2 Lumen Package					
25°C	> 96%	> 95%	> 95%	> 93%	> 500,000
40°C	> 95%	> 94%	> 93%	> 91%	> 500,000
50°C	> 95%	> 93%	> 92%	> 90%	> 400,000
B3 Lumen Package					
25°C	> 96%	> 93%	> 93%	> 89%	> 300,000
40°C	> 95%	> 91%	> 90%	> 85%	> 240,000
50°C	> 95%	> 90%	> 89%	> 83%	> 200,000
B4 Lumen Package					
25°C	> 96%	> 95%	> 95%	> 93%	> 500,000
40°C	> 95%	> 92%	> 92%	> 88%	> 300,000
50°C	> 94%	> 91%	> 90%	> 85%	> 250,000
B5 Lumen Package					
25°C	> 96%	> 93%	> 92%	> 88%	> 300,000
40°C	> 94%	> 90%	> 89%	> 83%	> 200,000
B6 Lumen Package					
25°C	> 95%	> 92%	> 90%	> 86%	> 250,000
40°C	> 95%	> 92%	> 91%	> 86%	> 250,000

ORDERING INFORMATION

Sample Number: TT-B2-LED-E1-WQ-AP

Product Family ¹	Lumen Package	Lamp Type	Voltage	Distribution	Mounting	Color
TT=TopTier	B1=Nominal 3,000 Lumens B2=Nominal 4,000 Lumens B3=Nominal 5,000 Lumens B4=Nominal 7,000 Lumens B5=Nominal 9,000 Lumens ^{2,3,4} B6=Nominal 11,000 Lumens ^{2,3,4}	LED=Solid State Light Emitting Diodes	E1=Electrical (120-277V) ⁵ 347=347V 480=480V ⁶	CQ=Concentrated MQ=Medium WQ=Wide	[BLANK]=Surface or Pendant Mount TMB=Trunnion Mount with Connection Box WM=Wall Mount	[BLANK]=White AP=Grey BZ=Bronze BK=Black DP=Dark Platinum GM=Graphite Metallic
Options (Add as Suffix)				Accessories (Order Separately)		
7060=70 CRI / 6000K ⁷ 8030=80 CRI / 3000K ⁷ 30L=Extra Long 30" Wires ⁸ HA=50°C High Ambient ^{2,9} CG=Clear Glass ¹⁰ SG=Solite [®] Glass ¹¹ TR=Tamper Resistant Hardware X=Driver Surge Protection Only 5LTD=Fifth Light DALI Driver(s) ^{5,7,8,12,13} IBP=Integral Battery Pack (Specify 120V or 277V. Must Specify Voltage) ^{3,9} ICP=Integral Cold Weather Battery Pack (Specify 120V or 277V. Must Specify Voltage) ^{4,9} MSP/DIM-L12=Mini Dimming Occupancy Sensor (8' - 12' Mounting) ¹⁴ MSP/DIM-L30=Mini Dimming Occupancy Sensor (12' - 30' Mounting) ¹⁴ DOS=Dimming Occupancy Sensor (8' - 20' Mounting) ¹⁵ DIMRF-LW=LumaWatt Wireless Sensor, Wide Lens (8' - 16' Mounting) ¹⁶ DIMRF-LN=LumaWatt Wireless Sensor, Narrow Lens (16' - 40' Mounting) ¹⁶				FSIR-100=Wireless Configuration Tool for Occupancy Sensor ¹⁵ MA1252=10kV Circuit Module Replacement		

- NOTES:**
- DesignLights Consortium[®] Qualified. Refer to www.designlights.org Qualified Products List under Family Models for details.
 - The B5 and B6 lumen packages are not available with the HA high ambient option.
 - The IBP option is only available in 120V or 277V, must specify voltage. 0°C minimum, 25°C maximum ambient temperature. Not available with B6 lumen package.
 - The ICP option is only available in 120V or 277V, must specify voltage. -20°C minimum, 25°C maximum ambient temperature. Not available with B6 lumen package.
 - Replace E1 with specific voltage when selecting the 5LTD option (120, 208, 240 or 277V).
 - Not to be used with un-grounded systems.
 - Extended lead times apply.
 - Not available with WM or TMB mounting options.
 - The 5LTD, IBP and ICP options are not available with dimming (DIM, DOS, DIMRF-LN or DIMRF-LW) or the HA high ambient option.
 - CG clear glass option only available with MQ and WQ distributions.
 - SG (Solite[®] glass) - Included as standard with the CQ distribution. Only available with WQ distribution.
 - Not available in combination with the IBP and ICP options.
 - Multiply published IES files by .95 when 5LTD is used with the B5 or B6 lumen package.
 - Available to order in April 2015.
 - The FSIR-100 configuration tool is required to adjust parameters including high and low modes, sensitivity, time delay, cutoff and more. Consult your Eaton's Cooper Lighting business representative for more information.
 - DIMRF-LN and DIMRF-LW are not available in 347 or 480V.