

1" = 8'-0"

### SPECIFICATION KEY NOTES

- DIVISION 4 - MASONRY
- 4.14 MASONRY EXPANSION JOINTS WITH COMPRESSIBLE FILLER
  - 4.20 MODULAR FACE BRICK
  - 4.29 4" CMU VENEER - BURNISHED FEATHERLITE 8" X 24"
  - 4.30 4" CMU VENEER - BURNISHED FEATHERLITE 16" X 24"
  - 4.50 STONE MASONRY VENEER - FLAMED STONE 16" X 24"
  - 4.51 STONE MASONRY VENEER - HONED STONE 16" X 24"
  - 4.61 CAST STONE SILL
  - 4.62 CAST STONE COPING
- DIVISION 5 - METALS
- 5.11 STEEL STRUCTURE (RE: STRUCTURAL)
- DIVISION 7 - THERMAL AND MOISTURE PROTECTION
- 7.41 MECHANICAL SCREEN
  - 7.61 STANDING SEAM METAL ROOFING
  - 7.71 PREFABRICATED METAL COPING
- DIVISION 8 - DOORS AND WINDOWS
- 8.41 ALUMINUM STOREFRONT SYSTEM
  - 8.43 SLIDING AUTOMATIC ENTRANCE DOOR
  - 8.50 FIXED ALUMINUM WINDOW
  - 8.52 OPERABLE ALUMINUM WINDOW
  - 8.90 GLAZED ALUMINUM CURTAINWALL
  - 8.91 BREAK-METAL CLOSURE TO MATCH CURTAINWALL SYSTEM

### ELEVATION LEGEND

- EXTERIOR WINDOW IDENTIFICATION

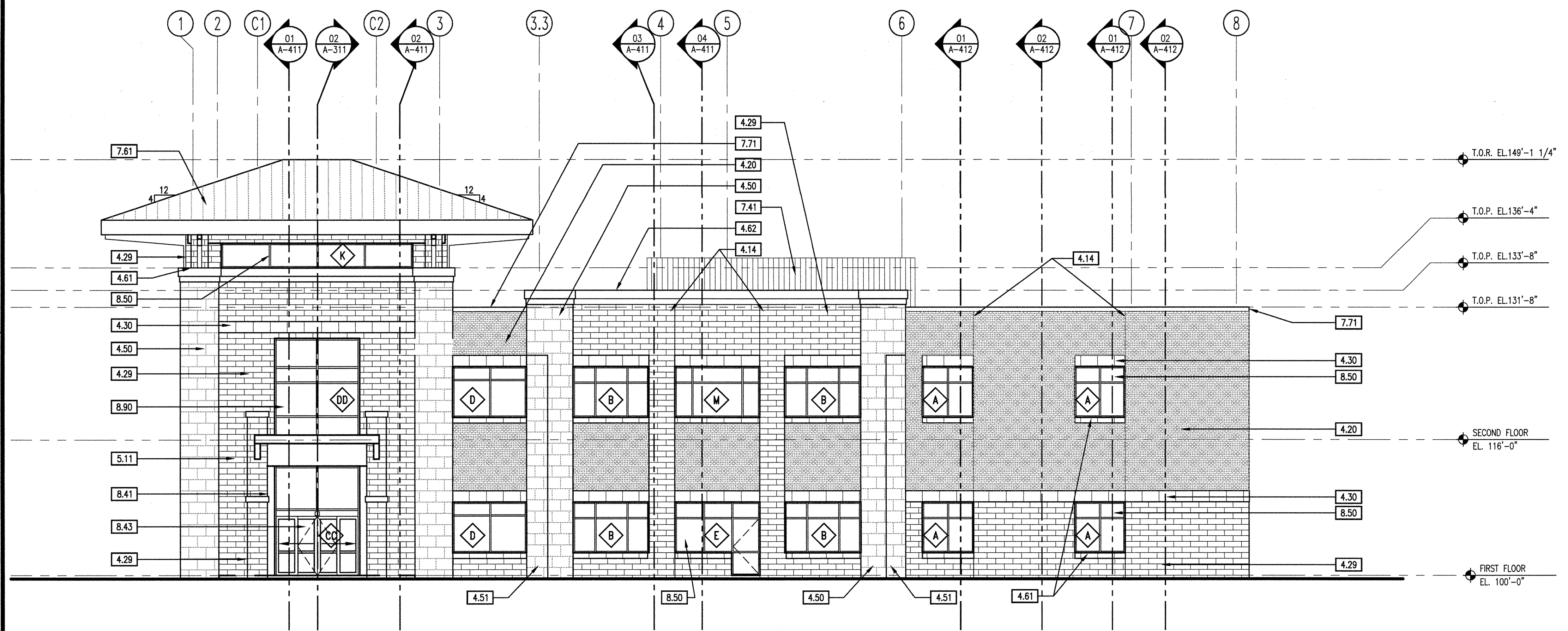
**PERKINS + WILL**  
 1000 N. Central Expressway  
 Suite 300  
 Dallas, TX 75201  
 T: 214.298.8700  
 F: 214.298.8701  
 www.perkinswill.com

**ROCKWALL MOB**  
 Horizon Rd at Rockwall Pkwy  
 Rockwall, TX 75032

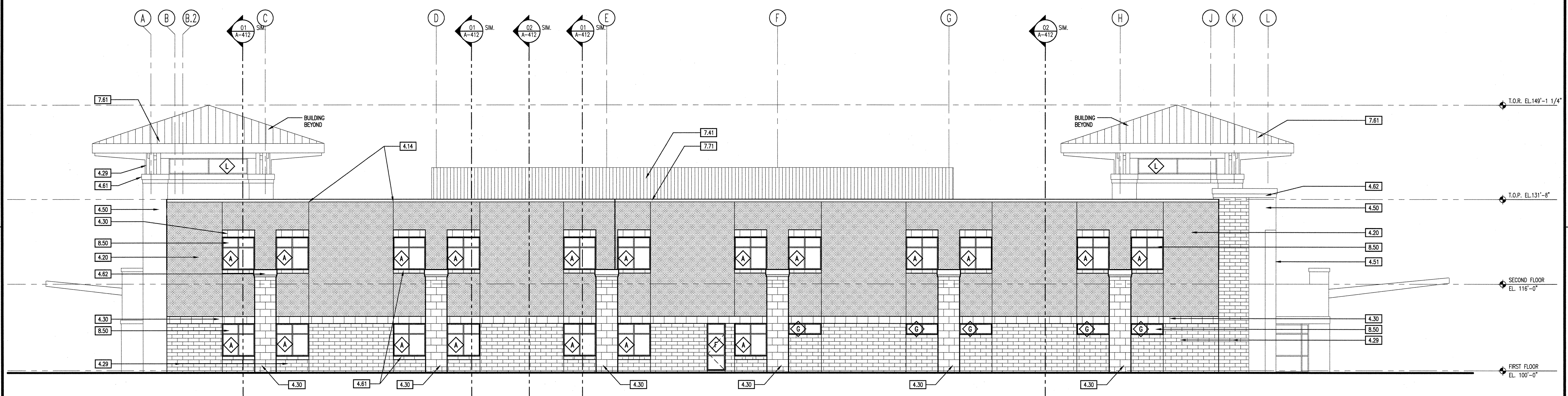
In association with:  
 STRUCTURAL ENGINEER  
**L.A. Fuess Partners, Inc.**  
 3333 Lee Parkway, Suite 300  
 Dallas, TX 75219  
 T: 214.871.7010  
 F: 214.969.0065

CIVIL ENGINEER  
**Pacheco Koch Consulting Engineers**  
 8350 North Central Expressway Suite 1000  
 Dallas, TX 75206  
 972.235.3031 office  
 972.235.9544 fax  
 www.pkce.com

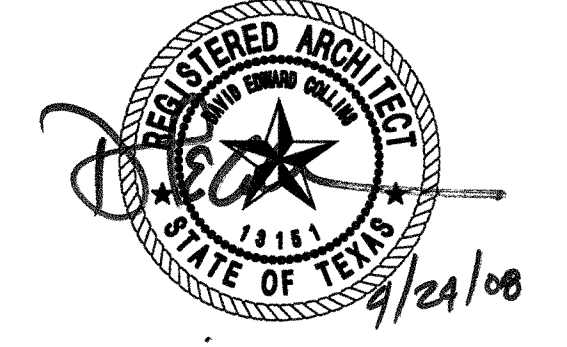
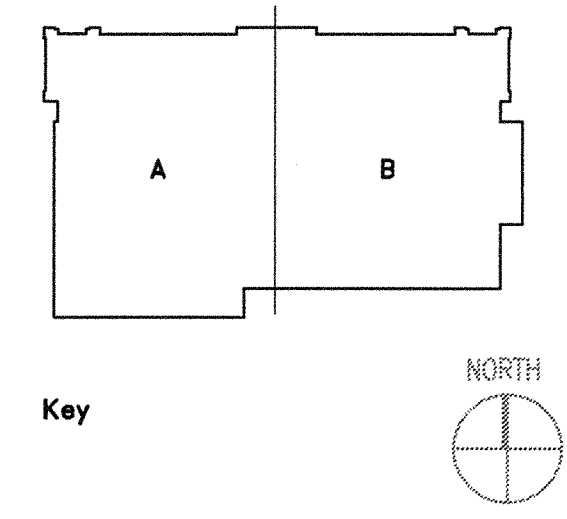
LANDSCAPE  
**Kendall Landscape Architecture**  
 5646 Milton, Suite 735  
 Dallas, TX 75206  
 214.739.3226 phone  
 214.375.9502 fax



**02 WEST ELEVATION**  
 1/8\" = 1'-0\"



**01 SOUTH ELEVATION**  
 1/8\" = 1'-0\"



Revisions		
NO.	ISSUE	DATE

Sheet Information		
NO.	ISSUE	DATE
Date	04.24.08	
Job Number	142.309.000	
Drawn	DF	
Checked	DF	
Approved	DC	

EXTERIOR ELEVATIONS

Sheet

**A-301**

Issued for Construction

Copyright © 2005 Perkins+Will