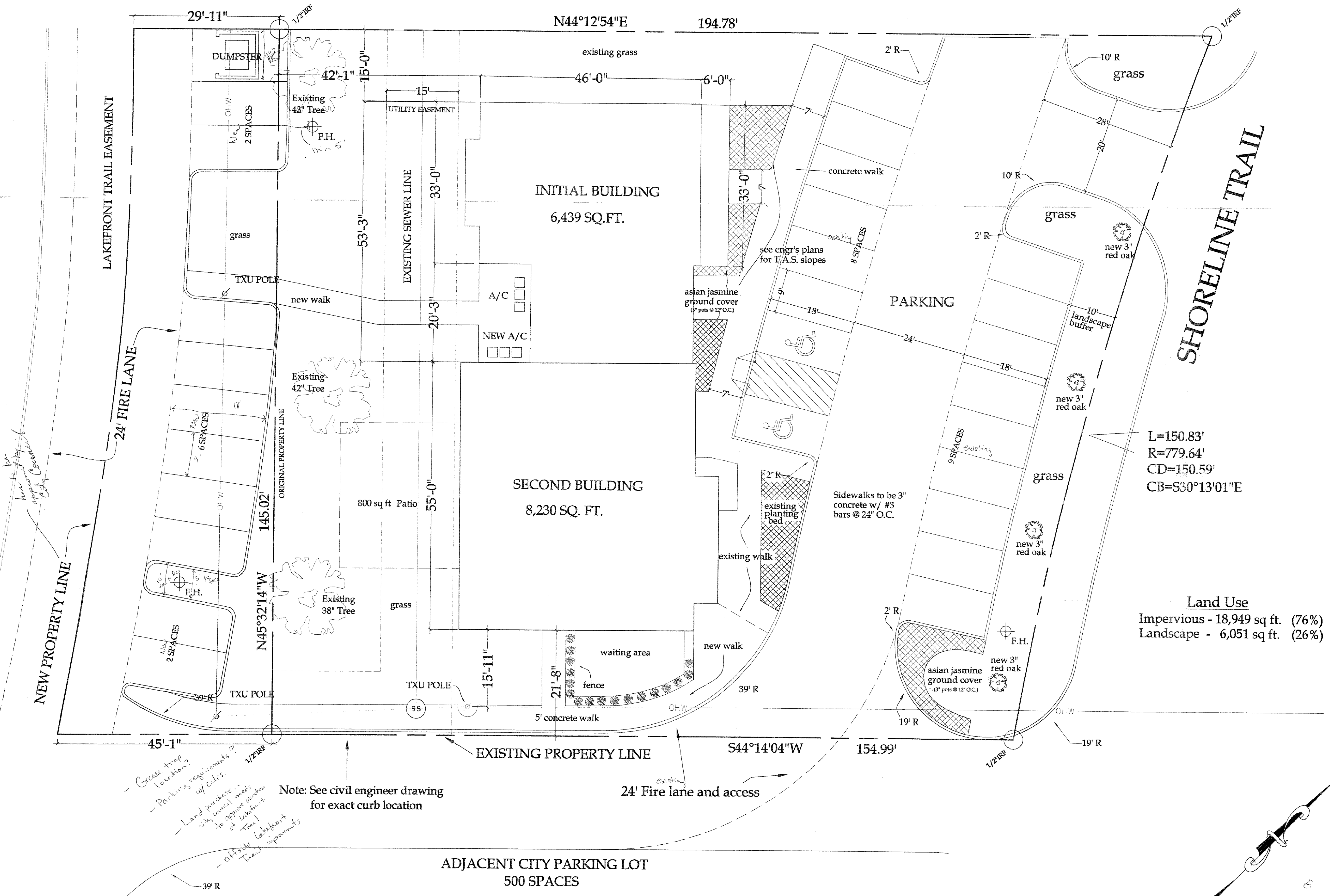


RAMSAY ARCHITECTS
 637 STAFFORD CIRCLE
 ROCKWALL, TEXAS 75087
 PH: 214.536.5308

McClintock
 OFFICE BUILDING
 2850 SHORELINE TRAIL ROCKWALL TEXAS

DATE
OCT. 17, 2008
 PROJECT
0106
S1



L=150.83'
 R=779.64'
 CD=150.59'
 CB=S30°13'01"E

Land Use
 Impervious - 18,949 sq ft. (76%)
 Landscape - 6,051 sq ft. (26%)

SITE AND LANDSCAPE PLAN
 SHORELINE PLAZA ADDITION
 LOT 4, BLOCK A
 25,000 SQ FT (.574 ACRES)
 scale 1" = 10'

to be approved by City Council
 NEW PROPERTY LINE

Grease trap location?
Parking requirements w/ sales?
Land purchase - city council needs to approve purchase of Lakefront Trail 1
off-site Lakefront Trail improvements

Note: See civil engineer drawing for exact curb location

ADJACENT CITY PARKING LOT
500 SPACES



RAMSAY & REYES
 ARCHITECTURE - MANAGEMENT
 2235 RIDGE RD. STE. 200 ROCKWALL, TEXAS 75087



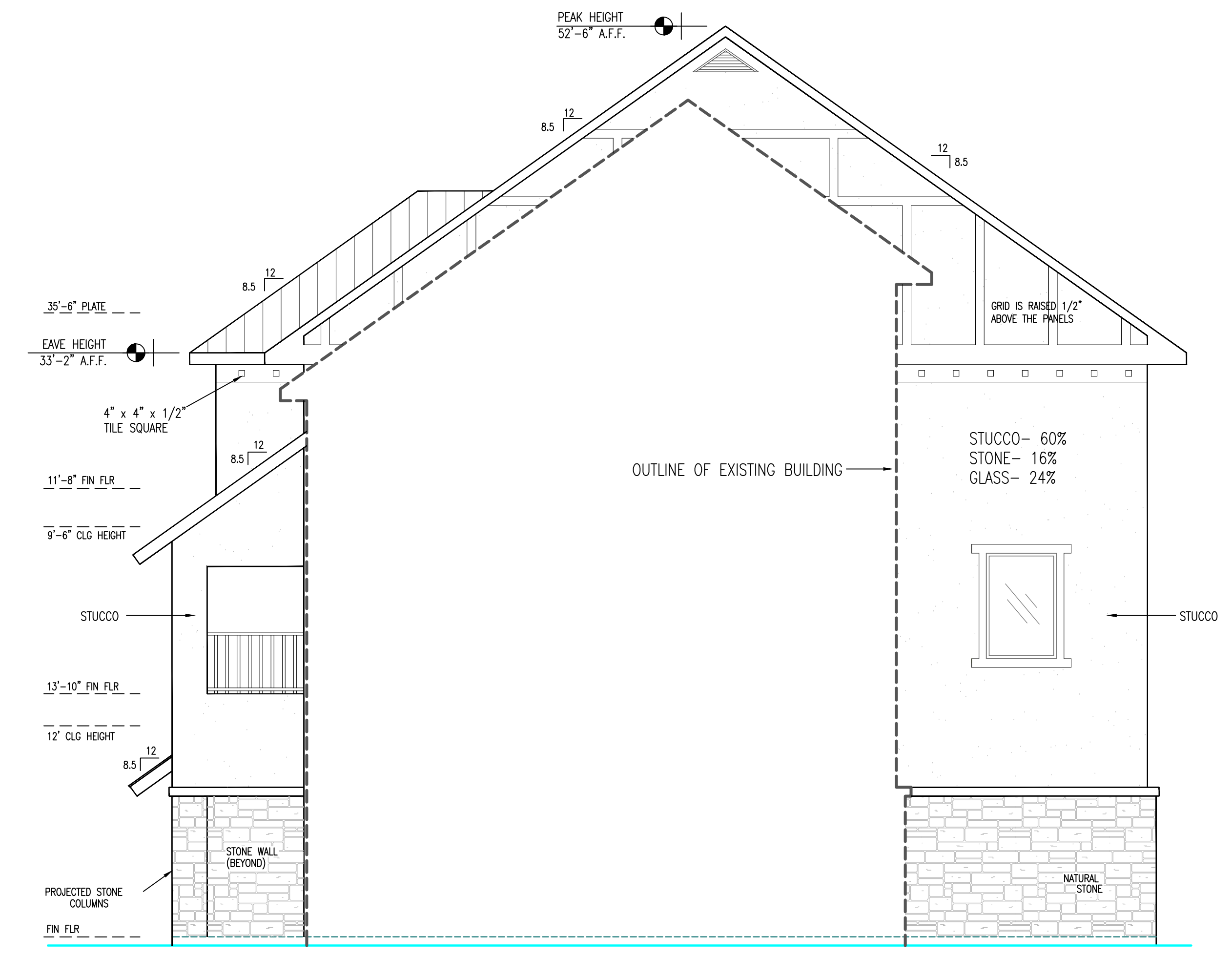
SHORELINE OFFICE BUILDING
 2850 SHORELINE TRAIL ROCKWALL, TEXAS 75087
 ©COPYRIGHT 2014. ALL RIGHTS RESERVED
 *ALL ELEMENTS OF THIS DRAWING ARE THE INTELLECTUAL PROPERTY OF RAMSAY & REYES

DATE
01/22/14
 PROJECT #
010314

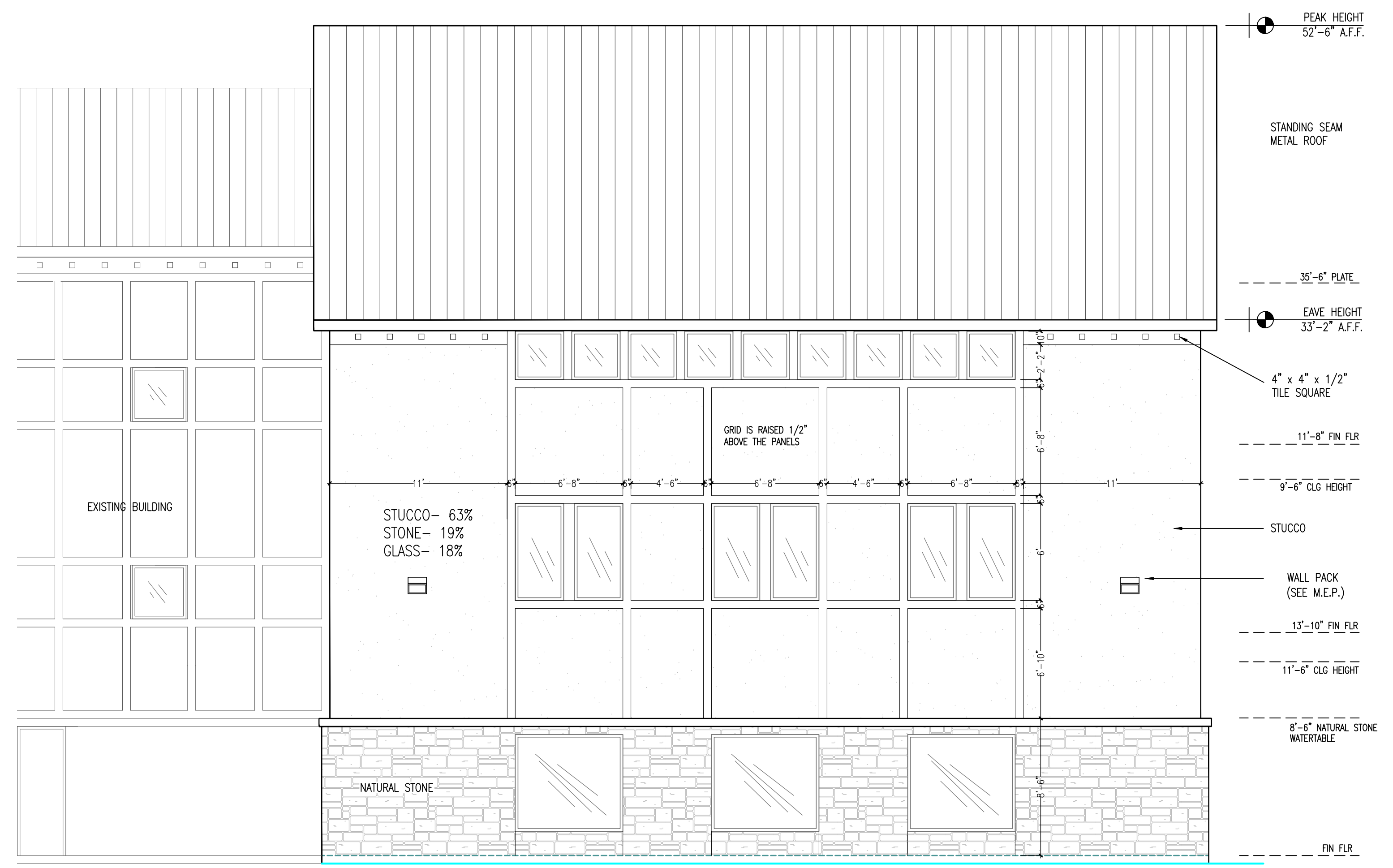
A-2



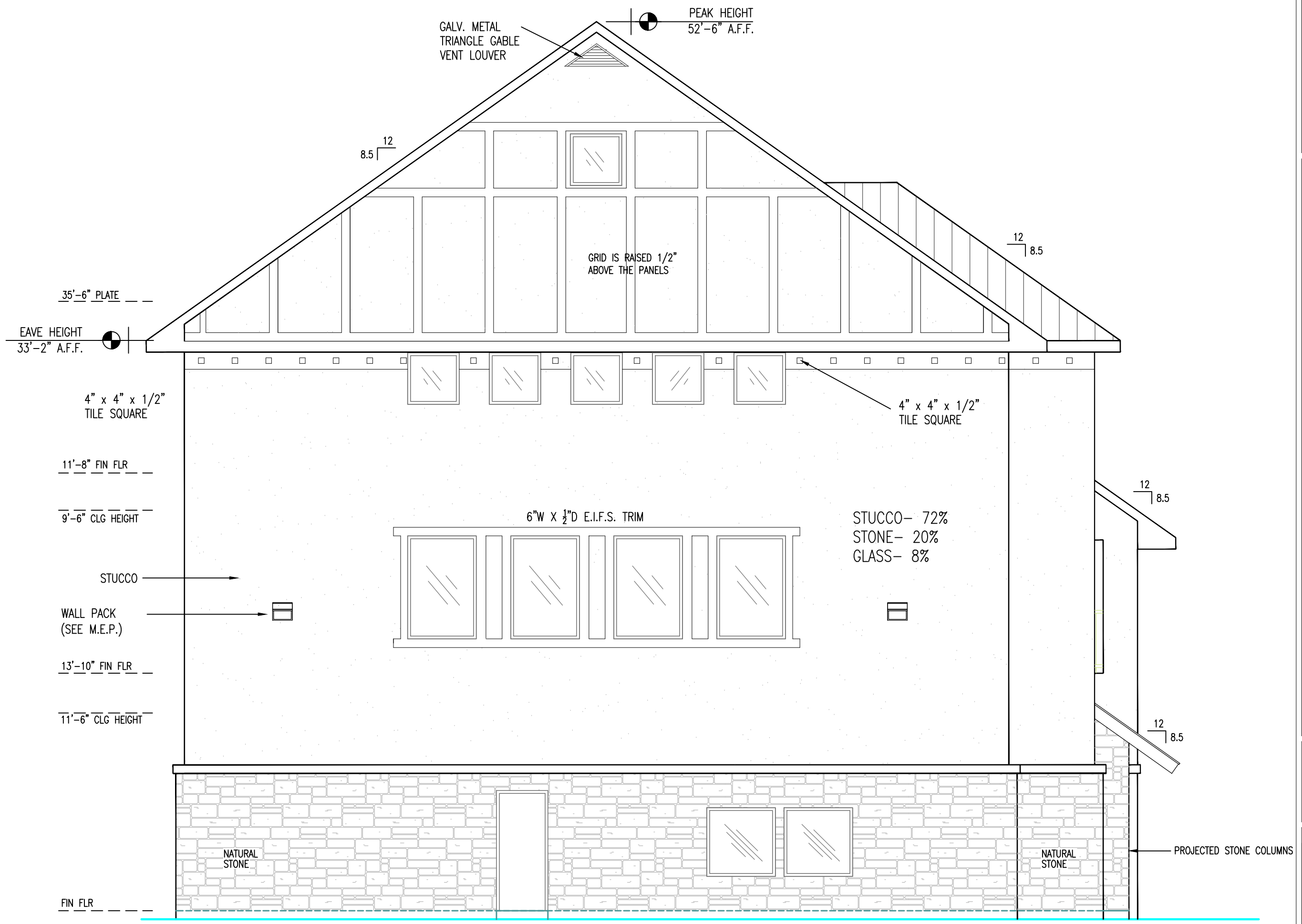
EAST ELEVATION
 scale: 1/8"=1'



NORTH ELEVATION
 scale: 1/8"=1'



WEST ELEVATION
 scale: 1/8"=1'



SOUTH ELEVATION
 scale: 1/8"=1'

CASE NO. : SP2014-005