

- LANDSCAPE NOTES**
- CONTRACTOR SHALL VERIFY ALL EXISTING AND PROPOSED SITE ELEMENTS AND NOTIFY LANDSCAPE ARCHITECT OF ANY DISCREPANCIES. SURVEY DATA OF EXISTING CONDITIONS WAS SUPPLIED BY OTHERS.
 - CONTRACTOR SHALL LOCATE ALL EXISTING UNDERGROUND UTILITIES AND NOTIFY LANDSCAPE ARCHITECT OF ANY CONFLICTS. CONTRACTOR SHALL EXERCISE CAUTION WHEN WORKING IN THE VICINITY OF UNDERGROUND UTILITIES.
 - CONTRACTOR SHALL PROVIDE A MINIMUM 2% SLOPE AWAY FROM ALL STRUCTURES.
 - CONTRACTOR SHALL FINE GRADE AREAS TO ACHIEVE FINAL CONTOURS AS INDICATED. LEAVE AREAS TO RECEIVE TOPSOIL 3" BELOW FINAL FINISHED GRADE IN PLANTING AREAS AND 1" BELOW FINAL FINISHED GRADE IN LAWN AREAS.
 - ALL PLANTING BEDS AND LAWN AREAS SHALL BE SEPARATED BY STEEL EDGING. NO STEEL EDGING SHALL BE INSTALLED ADJACENT TO BUILDINGS, WALKS, OR CURBS. CUT STEEL EDGING AT 45 DEGREE ANGLE WHERE IT INTERSECTS WALKS AND CURBS.
 - TOP OF MULCH SHALL BE 1/2" MINIMUM BELOW THE TOP OF WALKS AND CURBS.
 - ALL LAWN AREAS SHALL BE SOLID SOD BERMUDAGRASS, UNLESS OTHERWISE NOTED ON THE DRAWINGS.
 - ALL REQUIRED LANDSCAPE AREAS SHALL BE PROVIDED WITH AN AUTOMATIC UNDERGROUND IRRIGATION SYSTEM WITH RAIN AND FREEZE SENSORS AND EVAPOTRANSPIRATION (ET) WEATHER-BASED CONTROLLERS AND SAID IRRIGATION SYSTEM SHALL BE DESIGNED BY A QUALIFIED PROFESSIONAL AND INSTALLED BY A LICENSED IRRIGATOR.
 - CONTRACTOR SHALL PROVIDE BID PROPOSAL LISTING UNIT PRICES FOR ALL MATERIAL PROVIDED.
 - CONTRACTOR SHALL BE RESPONSIBLE FOR OBTAINING ALL REQUIRED LANDSCAPE AND IRRIGATION PERMITS.
- MAINTENANCE NOTES**
- THE OWNER, TENANT AND THEIR AGENT, IF ANY, SHALL BE JOINTLY AND SEVERALLY RESPONSIBLE FOR THE MAINTENANCE OF ALL LANDSCAPE.
 - ALL LANDSCAPE SHALL BE MAINTAINED IN A NEAT AND ORDERLY MANNER AT ALL TIMES. THIS SHALL INCLUDE MOWING, EDGING, PRUNING, FERTILIZING, WATERING, WEEDING AND OTHER SUCH ACTIVITIES COMMON TO LANDSCAPE MAINTENANCE.
 - ALL LANDSCAPE AREAS SHALL BE KEPT FREE OF TRASH, LITTER, WEEDS AND OTHER SUCH MATERIAL OR PLANTS NOT PART OF THIS PLAN.
 - ALL PLANT MATERIAL SHALL BE MAINTAINED IN A HEALTHY AND GROWING CONDITION AS IS APPROPRIATE FOR THE SEASON OF THE YEAR.
 - ALL PLANT MATERIAL WHICH DIES SHALL BE REPLACED WITH PLANT MATERIAL OF EQUAL OR BETTER VALUE.
 - CONTRACTOR SHALL PROVIDE SEPARATE BID PROPOSAL FOR ONE YEAR'S MAINTENANCE TO BEGIN AFTER FINAL ACCEPTANCE.

PLANT LIST

SYMBOL	BOTANICAL NAME	COMMON NAME	QTY.	SIZE	REMARKS
TREES					
BC	<i>Taxodium distichum</i>	Bald Cypress	29	3" cal.	container grown, 12' ht., 4' spread, 4' branching ht., matching
BO	<i>Quercus macrocarpa</i>	Bur Oak	8	3" cal.	container grown, 12' ht., 4' spread, 4' branching ht., matching
CM	<i>Lagerstroemia indica 'Natchez'</i>	Crepe Myrtle 'Natchez'	5	30 gal.	container grown, 3-5 trunk, no cross canes, 8' ht., 4' spread, matching
LO	<i>Quercus virginiana</i>	Live Oak	6	3" cal.	container grown, 12' ht., 4' spread, 4' branching ht., matching
SHRUBS/GROUNDCOVER					
AB	<i>Abelia grandiflora 'Edward Goucher'</i>	Dwarf Abelia 'Edward Goucher'	55	5 gal.	container full, 20" spread, 36" o.c.
IH	<i>Raphiolepis indica 'Pinkie'</i>	Indian Hawthorne 'Pinkie'	47	5 gal.	container full, 20" spread, 36" o.c.
GL	<i>Liriope gigantea</i>	Giant Liriope	215	1 gal.	container full top of container, 18" o.c.
LIR	<i>Liriope muscari 'Big Blue'</i>	Liriope 'Big Blue'	1280	4" pots	container full top of container, 12" o.c.
SG	<i>Salvia greggii 'Red'</i>	Salvia Greggii 'Red'	50	5 gal.	container full, 20" spread 24" o.c.
	<i>Cynodon dactylon</i>	Common Bermudagrass			refer to notes

NOTE: ALL TREES SHALL HAVE STRAIGHT TRUNKS AND BE MATCHING WITHIN VARIETIES.
 PLANT LIST IS AN AID TO BIDDERS ONLY. CONTRACTOR SHALL VERIFY ALL QUANTITIES ON PLAN.
 ALL HEIGHTS AND SPREADS ARE MINIMUMS. ALL PLANT MATERIAL SHALL MEET OR EXCEED REMARKS AS INDICATED.

LANDSCAPE TABULATIONS
 THE CITY OF ROCKWALL, TEXAS

- SITE LANDSCAPING - LIGHT INDUSTRIAL**
- 10% of the total site shall be landscaped.
 - 100% of the total requirements shall be located in the front of and along side buildings with street frontage.

Total site = 118,022 s.f.

Required	Provided
11,802 s.f. (10%)	51,551 s.f. (44%)
11,802 s.f. (100%)	33,397 s.f.

- STREET LANDSCAPING**
- 10' wide landscape buffer with one tree per 50 f.f.

SIDS ROAD - 359 f.f.

Required	Provided
(7) trees, 3" cal.	(8) trees, 3" cal.

- PARKING LOT LANDSCAPING**
- 5% of the interior parking lot shall be landscape.
 - If parking area exceeds 20,000 s.f., one (1) large canopy tree for every ten (10) required parking spaces.

Total interior parking lot area = 45,697 s.f.
 Total parking spaces = 52 spaces

Required	Provided
2,285 s.f. (5%)	2,487 s.f. (5%)
(5) trees, 3" cal.	(6) trees, 3" cal.

- DETENTION BASINS**
- One (1) large tree per 750 s.f. of dry land area.

DETENTION POND - 22,104 s.f.

Required	Provided
(29) trees, 3" cal.	(29) trees, 3" cal.

GENERAL LAWN NOTES

- CONTRACTOR SHALL COORDINATE OPERATIONS AND AVAILABILITY OF EXISTING TOPSOIL WITH ON-SITE CONSTRUCTION MANAGER.
- CONTRACTOR SHALL LEAVE LAWN AREAS 1" BELOW FINAL FINISHED GRADE PRIOR TO TOPSOIL INSTALLATION.
- CONTRACTOR SHALL FINE GRADE AREAS TO ACHIEVE FINAL CONTOURS AS INDICATED ON CIVIL PLANS. ADJUST CONTOURS TO ACHIEVE POSITIVE DRAINAGE AWAY FROM BUILDINGS. PROVIDE UNIFORM ROUNDING AT TOP AND BOTTOM OF SLOPES AND OTHER BREAKS IN GRADE. CORRECT IRREGULARITIES AND AREAS WHERE WATER MAY STAND.
- ALL LAWN AREAS SHALL BE FINE GRADED, IRRIGATION TRENCHES COMPLETELY SETTLED AND FINISH GRADE APPROVED BY THE OWNER'S CONSTRUCTION MANAGER OR LANDSCAPE ARCHITECT PRIOR TO LAWN INSTALLATION.
- CONTRACTOR SHALL REMOVE ALL ROCKS 3/4" DIAMETER AND LARGER, DIRT CLOUDS, STICKS, CONCRETE SPOILS, ETC. PRIOR TO PLACING TOPSOIL AND LAWN INSTALLATION.
- CONTRACTOR SHALL MAINTAIN ALL LAWN AREAS UNTIL FINAL ACCEPTANCE. THIS SHALL INCLUDE, BUT NOT BE LIMITED TO: MOWING, WATERING, WEEDING, CULTIVATING, CLEANING AND REPLACING DEAD OR BARE AREAS TO KEEP PLANTS IN A VIGOROUS, HEALTHY CONDITION.
- CONTRACTOR SHALL GUARANTEE ESTABLISHMENT OF ACCEPTABLE TURF AREA AND SHALL PROVIDE REPLACEMENT FROM LOCAL SUPPLY IF NECESSARY.

SOLID SOD NOTES

- PLANT SOD BY HAND TO COVER INDICATED AREAS COMPLETELY. ENSURE EDGES OF SOD ARE TOUCHING. TOP DRESS JOINTS BY HAND WITH TOPSOIL TO FILL VOIDS.
- ROLL GRASS AREAS TO ACHIEVE A SMOOTH, EVEN SURFACE, FREE FROM UNNATURAL UNDULATIONS.
- WATER SOD THOROUGHLY AS SOD OPERATION PROGRESSES.
- IF INSTALLATION OCCURS BETWEEN SEPTEMBER 1 AND MARCH 1, OVER-SEED BERMUDAGRASS SOD WITH WINTER RYEGRASS, AT A RATE OF FOUR (4) POUNDS PER ONE THOUSAND (1000) SQUARE FEET.

HYDROMULCH NOTES

- CONTRACTOR SHALL SCARIFY, RIP AND LOOSEN ALL AREAS TO BE HYDROMULCHED TO A MINIMUM DEPTH OF 4" PRIOR TO TOPSOIL AND HYDROMULCH INSTALLATION.
- BERMUDAGRASS SEED SHALL BE EXTRA HULLED AND TREATED LAWN TYPE. SHALL BE DELIVERED TO THE SITE IN ITS ORIGINAL UNOPENED CONTAINER AND SHALL MEET STATE LAW REQUIREMENTS.
- FIBER SHALL BE ONE HUNDRED PERCENT (100%) WOOD CELLULOSE FIBER, DELIVERED TO THE SITE IN ITS ORIGINAL UNOPENED CONTAINER AS MANUFACTURED BY 'CONWEB' OR EQUAL.
- FIBER TACK SHALL BE DELIVERED TO THE SITE IN ITS ORIGINAL UNOPENED CONTAINER AND SHALL BE 'TERRO-TACK ONE', AS MANUFACTURED BY GROWERS, INC. OR EQUAL.
- HYDROMULCH WITH BERMUDAGRASS SEED AT A RATE OF TWO (2) POUNDS PER ONE THOUSAND (1000) SQUARE FEET.
- USE A 4'X8' BATTER BOARD AGAINST ALL BED AREAS.
- IF INSTALLATION OCCURS BETWEEN SEPTEMBER 1 AND MAY 1, ALL HYDROMULCH AREAS TO BE WINTER RYEGRASS, AT A RATE OF FOUR (4) POUNDS PER ONE THOUSAND (1000) SQUARE FEET. CONTRACTOR SHALL BE REQUIRED TO RE-HYDROMULCH WITH BERMUDAGRASS THE FOLLOWING GROWING SEASON AS PART OF THIS CONTRACT.
- ALL LAWN AREAS TO BE HYDROMULCHED SHALL HAVE ONE HUNDRED PERCENT (100%) COVERAGE PRIOR TO FINAL ACCEPTANCE.

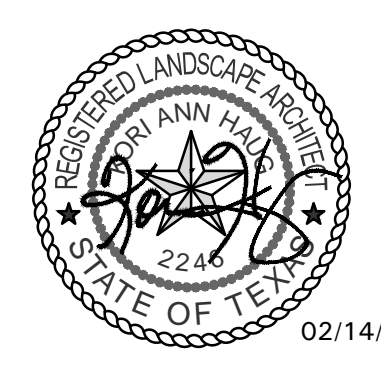
NO TREES WITHIN 5'-0" OF ANY UTILITIES.

NO PROTECTED EXISTING TREES ON SITE

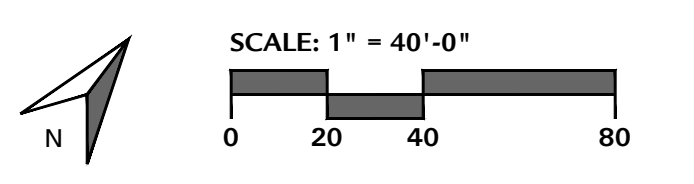
LANDSCAPE PLAN

RCEC Office Building

Lots 2, Block 1
 Rayburn Country Addition



02/14/14



214.865.7192 office
 214.865.7192 office
 214.865.7192 office

Civil Engineer
 4245 North Central Expy
 Suite 230
 Dallas, Texas 75205
 Telephone: 972.941.8400

Architect
 Alliance Architects, Inc.
 1600 N. Collins Blvd., Ste. 1000
 Richardson, TX 75080
 Telephone: 972.233.0400

Owner
 Rayburn Country Electric
 980 Sids Road
 Rockwall, TX 75087
 Telephone: 469.402.2100

February 14, 2014

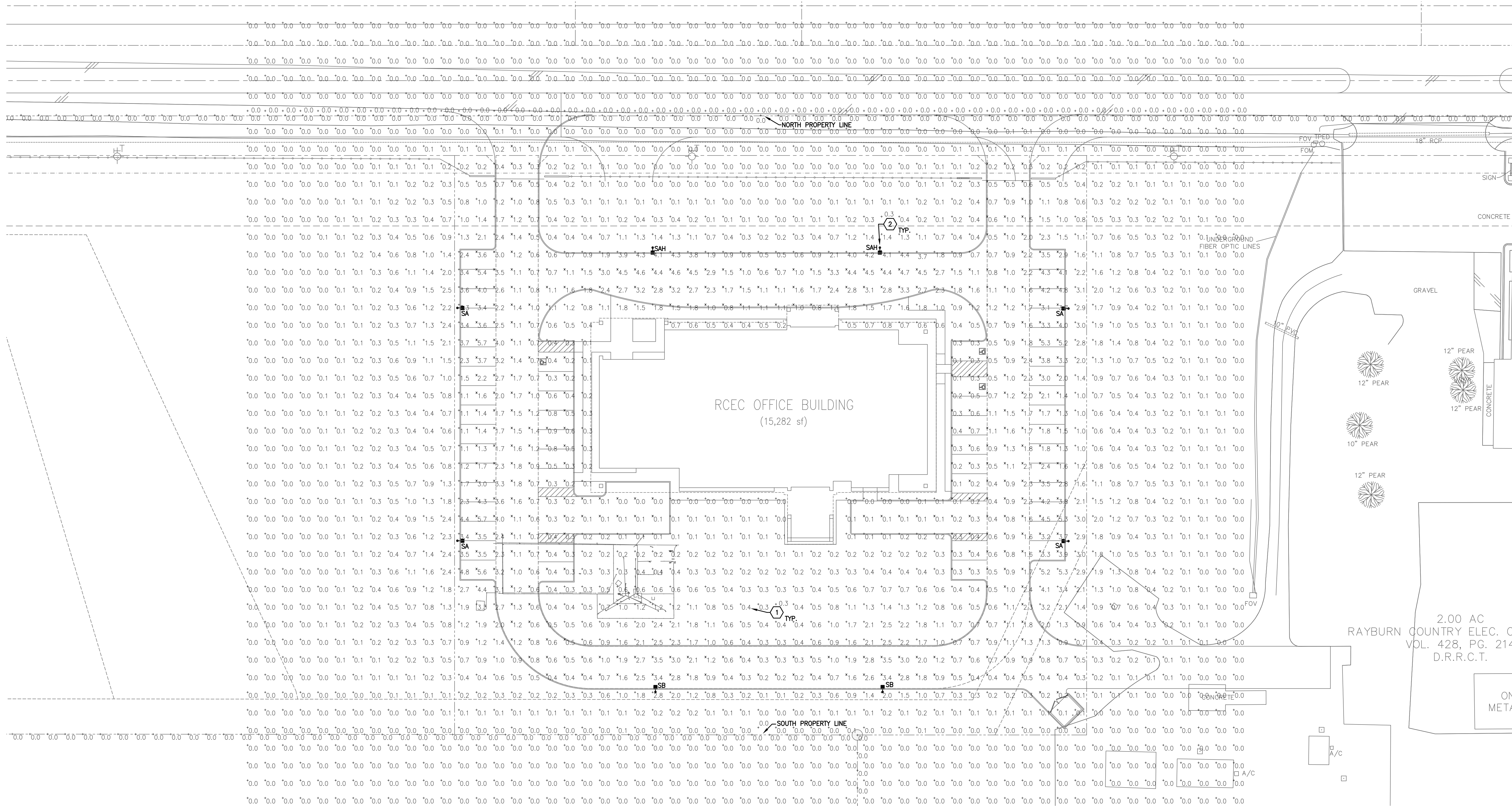
Case No. SP13-00XX



Vicinity Map



HPMB
 CONSULTING ENGINEERS, INC.
 HERGENRETH • PENNER • MCGUIRE • BURKETT
 2828 E. Trinity Mills Road, Ste. 210
 Carrollton, Texas 75006
 214-483-6202
 REG #F-9656



PHOTOMETRIC NOTES INDICATED BY SYMBOL * (#) *

(1) VALUES SHOWN INDICATE MAINTAINED LIGHTING LEVELS IN FOOTCANDLES AT GRADE.

(2) OVERALL POLE HEIGHT IS 27' ABOVE FINISHED GRADE, POLE HEIGHT IS 25' WITH A 2' POLE BASE.

1 SITE PLAN - PHOTOMETRICS - MAINTAINED
 SCALE: 1"=30'-0"

LIGHTING FIXTURE SCHEDULE		
FIXTURE I.D.	LAMPS	FIXTURE DESCRIPTION
SA	(1) 400W MH PULSE START	METAL HALIDE POLE MOUNTED SHOEBOX FIXTURE, FULL CUTOFF WITH SEGMENTED TYPE III ASYMMETRIC DISTRIBUTION AND DARK BRONZE FINISH. 25" SQUARE STRAIGHT STEEL POLE, DRILL MOUNTED WITH (1) FIXTURES AT 90'. 277V. LITHONIA #KAD-400M-SR3-TB-SCWA-SPD-04-LPI (FIXTURE) LITHONIA #SSS-25-4G-DM19-DDB (POLE)
SAH	(1) 400W MH PULSE START	SIMILAR TO LIGHT FIXTURE TYPE "SA" ABOVE, EXCEPT WITH A HOUSE-SIDE SHIELD. 277V. LITHONIA #KAD-400M-SR3-TB-SCWA-SPD-04-LPI-HS (FIXTURE) LITHONIA #SSS-25-4G-DM19-DDB (POLE)
SB	(1) 400W MH PULSE START	SIMILAR TO LIGHT FIXTURE TYPE "SA" ABOVE, EXCEPT WITH A SEGMENTED TYPE IV SHARP CUTOFF DISTRIBUTION. 277V. LITHONIA #KAD-400M-SR4SC-TB-SCWA-SPD-04-LPI (FIXTURE) LITHONIA #SSS-25-4G-DM19-DDB (POLE)

STATISTICS				
DESCRIPTION	SYMBOL	AVG	MAX	MIN
OVERALL PROPERTY	+	0.5 fc	5.7 fc	0.0 fc
EAST PROPERTY LINE	+	0.0 fc	0.0 fc	0.0 fc
NORTH PROPERTY LINE	+	0.0 fc	0.0 fc	0.0 fc
PARKING	✳	1.5 fc	5.7 fc	0.0 fc
SOUTH PROPERTY LINE	+	0.0 fc	0.0 fc	0.0 fc
WEST PROPERTY LINE	+	0.0 fc	0.0 fc	0.0 fc

This document is released for the purpose of interim review under the authority of: DENNIS J. HERGENRETH, JR., Texas P.E. No. 84402
 Date of Issue: 02/14/2014
 IT IS NOT TO BE USED FOR BIDDING, CONSTRUCTION OR PERMIT PURPOSES.

RCEC Office Building

Lots 2, Block 1
 Rayburn Country Addition

Civil Engineer: Engineering Concepts & Design, 201 Winco Circle, Ste. 200, Wylie, TX 75098, Telephone: 972.941.8400
 Architect: Alliance Architects, Inc., 1600 N. Collins Blvd., Ste. 1000, Richardson, TX 75080, Telephone: 972.233.0400
 Owner: Rayburn Country Electric, 980 Slits Road, Rockwall, TX 75087, Telephone: 469.402.2100

February 14, 2014
 Case No. SP13-00XX

FEATURES & SPECIFICATIONS

INTENDED USE – Ideal for parking areas, street lighting, walkways and car lots.

CONSTRUCTION – Rugged, die-cast, soft corner aluminum housing with 0.12" nominal wall thickness. Die-cast door frame has impact-resistant, tempered, glass lens that is fully gasketed with one-piece tubular silicone. Finish: Standard finish is dark bronze (DDB) polyester powder finish, with other architectural colors available.

OPTICS – Anodized, aluminum reflectors: IES full cutoff distributions R2 (asymmetric), R3 (asymmetric), R4 (forward throw) and R5S (square) are interchangeable. High-performance anodized, segmented aluminum reflectors IES full cutoff distributions SR2 (asymmetric), SR3 (asymmetric) and SR4SC (forward throw, sharp cutoff). High-performance reflectors attach with tool-less fasteners and are rotatable and interchangeable.

ELECTRICAL – Ballast: High pressure sodium: 70-150W is high reactance, high power factor. Constant wattage autotransformer for 200-400W. Metal halide: 70-150W is high reactance, high power factor and is standard with pulse-start ignitor technology. "SCWA" not required. Constant wattage autotransformer for 175-400W. Super CWA (pulse start ballast), 88% efficient and EISA legislation compliant, is required for metal halide 151-400W (SCWA option) for US shipments only. CSA, NOM or INTL required for probe start shipments outside of the US. Pulse-start ballast (SCWA) required for 200W, 320W, or 350W. Ballast is 100% factory-tested.

Socket: Porcelain, horizontally oriented medium base socket for 70-150M. Mogul base socket for 175M and above, and 70-400S, with copper alloy, nickel-plated screw shell and center contact. UL listed 1500W, 600V.

LISTINGS – UL Listed (standard). CSA Certified (see Options). UL listed for 25°C ambient and wet locations. IP65 rated in accordance with standard IEC 529.

WARRANTY – 1-year limited warranty. Complete warranty terms located at www.acuitybrands.com/CustomerResources/Terms_and_conditions.aspx

Note: Specifications subject to change without notice.



Catalog Number
Notes
Type



Specifications

EPA: 1.2 ft.²

*Weight: 35.9 lbs (16.28 kg)

Length: 17-1/2" (44.5)

Width: 17-1/2" (44.5)

Depth: 7-1/8" (18.1)

All dimensions are inches (centimeters) unless otherwise specified.

*Weight as configured in example below.

CONTOUR
SERIES

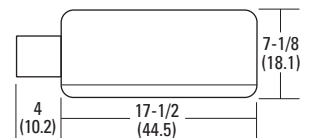
Soft Square Lighting

KAD

METAL HALIDE: 70-400W

HIGH PRESSURE SODIUM: 70-400W

20' TO 35' MOUNTING



ORDERING INFORMATION For shortest lead times, configure product using **bolded options**.

Example: KAD 400M R3 TB SCWA SPD04 LPI

KAD	Wattage			Distribution		Voltage	Ballast	Mounting ¹²	
KAD	Metal halide	High pressure sodium ¹	Ceramic metal halide	Standard reflectors	High performance reflectors ⁸	120	(blank) Magnetic ballast	Ships in fixture carton	
	70M ^{1,2} 250M⁵	70S	70MHC ^{1,2}	R2 IES type II asymmetric ⁷	SR2 IES type II asymmetric ⁷	208 ⁹	CWI Contant wattage isolated ¹¹	SPD Square pole	Arm length
	100M ¹ 320M ⁴	100S	100MHC ¹	R3 IES type III asymmetric ⁷	SR3 IES type III asymmetric ⁷	240 ⁹	Pulse Start	RPD Round pole	04 4" arm
	150M 350M ^{3,4}	150S	150MHC	R4 IES type IV forward throw ⁷	SR4SC IES type IV forward throw	277	SCWA Super CWA pulse-start ballast	WBD Wall bracket	06 6" arm
	175M ³ 400M^{5,6}	250S		R5S IES type V square		347	NOTE: For shipments to U.S. territories, SCWA must be specified to comply with EISA.	WWD Wood or pole wall	09 9" arm
	200M ⁴	400S				480 ⁹		Ships separately ^{13,14}	12 12" arm
						TB¹⁰		DAD12P Degree arm (pole)	
						23050HZ ¹¹		DAD12WB Degree arm (wall)	
								WBA Decorative wall bracket ¹⁵	
								KMA Mast arm external fitter	
								KTMB Twin mounting bar	

Options				Finish ²⁰				Lamp ²¹
Shipped installed in fixture		CSA CSA Certified	PE3 NEMA twist-lock PE (347V)	(blank) Dark bronze	DNAXD Natural aluminum	LPI Lamp included		
SF Single fuse (120, 277, 347V) ¹⁶	INTL Available MH for probe start shipping outside the U.S.	PE4 NEMA twist-lock PE (480V)	PE7 NEMA twist-lock PE (277V)	DWH White	DWHXD White	L/LP Less lamp		
DF Double fuse (208, 240, 480V) ¹⁶	REGC1 California Title 20, effective 1/1/2010	VG Vandal guard ¹⁹	WG Wire guard ¹⁹	DBL Black	DBBTD Textured dark bronze			
PD Power tray ¹⁷	Shipped separately ¹³			DMB Medium bronze	DBLBXD Textured black			
PER NEMA twist-lock receptacle only (no photocontrol)	HS House side shield			DNA Natural aluminum	DNATXD Textured natural aluminum			
QRS Quartz restrrike system ¹⁸	PE1 NEMA twist-lock PE (120, 208, 240V)			Super Durable Finishes	DWHGXD Textured white			
QRSTD QRS time delay ¹⁸				DDBXD Dark bronze				
WTB Terminal wiring block ¹⁷				DBLXD Black				

Accessories: Tenon Mounting Slipfitter (RPxx required.)
Order as separate catalog number. Must be used with pole mounting.

		Number of fixtures					
Tenon O.D.	One	Two@180°	Two@90°	Three@120°	Three@90°	Four@90°	
2-3/8"	T20-190	T20-280	T20-290 ²²	T20-320 ²²	T20-390 ²²	T20-490 ²²	
2-7/8"	T25-190	T25-280	T25-290 ²²	T25-320	T25-390 ²²	T25-490 ²²	
4	T35-190	T35-280	T35-290 ²²	T35-320	T35-390 ²²	T35-490 ²²	

Notes

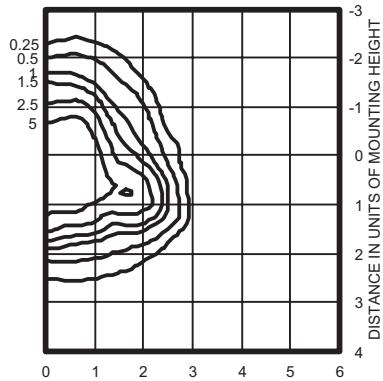
- Not available with SCWA.
- Not available with 480V.
- These wattages do not comply with California Title 20 regulations.
- Must be ordered with SCWA.
- These wattages require the REGC1 option to be chosen for shipments into California for Title 20 compliance. 250M REGC1 is not available in 347 or 480V.
- Reduced jacket ED28 required for SR2, SR3 and SR4SC optics.
- House-side shield available.
- High performance reflectors not available with QRSTD.
- Must specify CWI for use in Canada.
- Optional multi-tap ballast (120, 208, 240, 277V; in Canada: 120, 277, 347V).
- Consult factory for available wattages.
- 9" arm is required when two or more luminaires are oriented on a 90° drilling pattern.
- May be ordered as an accessory.
- Must specify finish when ordered as an accessory.
- Available with SPD04 and SPD09.
- Must specify voltage. N/A with TB.
- Only available with SR2, SR3 and SR4SC optics.
- Max allowable wattage lamp included.
- Prefix with KAD when ordered as an accessory.
- See www.lithonia.com/archcolors for additional color options.
- Must be specified. L/LP not available with MHC.
- Must use RPD09.

KAD Metal Halide, Arm-mounted Soft Square Cutoff

Coefficient of Utilization _____
Initial Footcandles _____

KAD 400M R2 Test no. 1193083101P

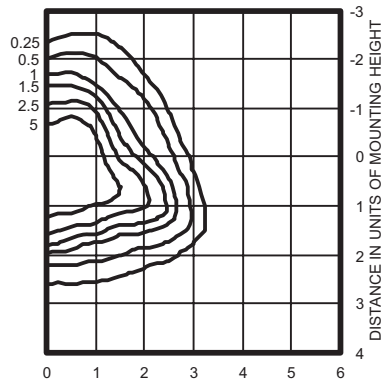
ISOILLUMINANCE PLOT (Footcandle)



400W pulse start metal halide lamp, rated 38000 lumens. Footcandle values based on 20' mounting height.
Classification: Type II, Short, Full Cutoff

KAD 400M R3 Test no. 1192040902P

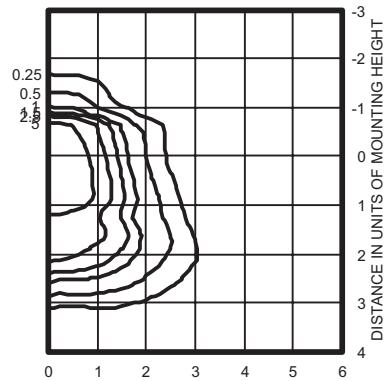
ISOILLUMINANCE PLOT (Footcandle)



400W pulse start metal halide lamp, rated 38,000 lumens. Footcandle values based on 20' mounting height.
Classification: Type II, Short, Full Cutoff

KAD 400M R4 Test no. 1191110101P

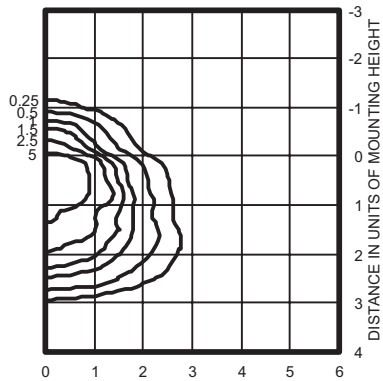
ISOILLUMINANCE PLOT (Footcandle)



400W pulse start metal halide lamp, rated 38,000 lumens. Footcandle values based on 20' mounting height.
Classification: Unclassified (Type III, Very Short), Full Cutoff

KAD 400M R4HS Test no. 1192061101P

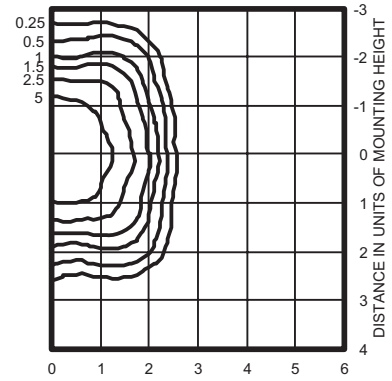
ISOILLUMINANCE PLOT (Footcandle)



400W pulse start metal halide lamp, rated 38,000 lumens. Footcandle values based on 20' mounting height.
Classification: Unclassified (Type III, Very Short), Full

KAD 400M R5S Test no. 1194040801P

ISOILLUMINANCE PLOT (Footcandle)



400W pulse start metal halide lamp, rated 38000 lumens. Footcandle values based on 20' mounting height.
Classification: Unclassified (Type NC, Very Short), Full Cutoff

Notes

- 1 Photometric data for other distributions can be accessed at www.lithonia.com.
- 2 Tested to current IES and NEMA standards under stabilized laboratory conditions. Various operating factors can cause differences between laboratory data and actual field measurements. Dimensions and specifications on this sheet are based on the most current available data and are subject to change without notice.
- 3 For electrical characteristics, consult outdoor technical data specification sheets on www.lithonia.com.

Mounting Height Correction Factor

(Multiply the fc level by the correction factor)

25 ft. = 0.64

35 ft. = 0.32

40 ft. = 0.25

$$\left(\frac{\text{Existing Mounting Height}}{\text{New Mounting Height}} \right)^2 = \text{Correction Factor}$$