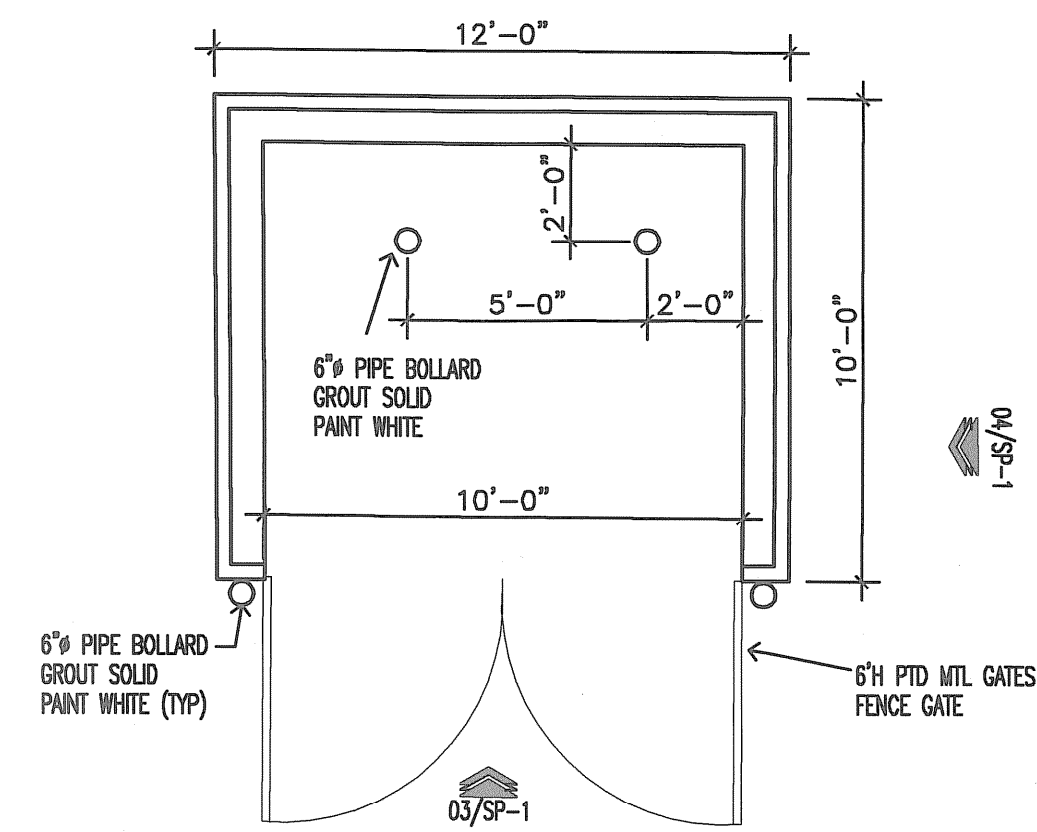
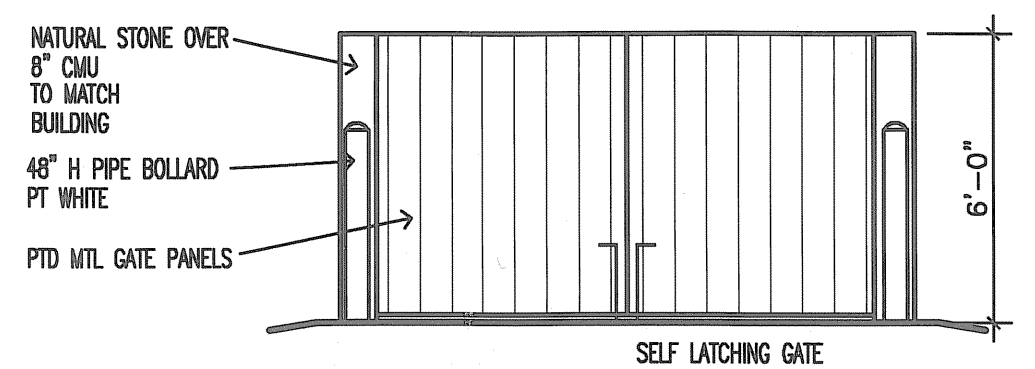


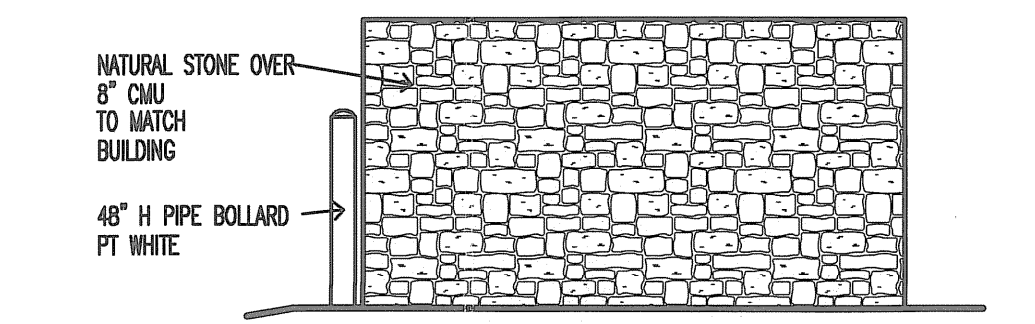
NOTE:
ALL SITE UTILITIES TO BE
VERIFIED ON CIVIL PLANS.



2 dumpster enclosure plan
SCALE: 1/4" = 1'-0"

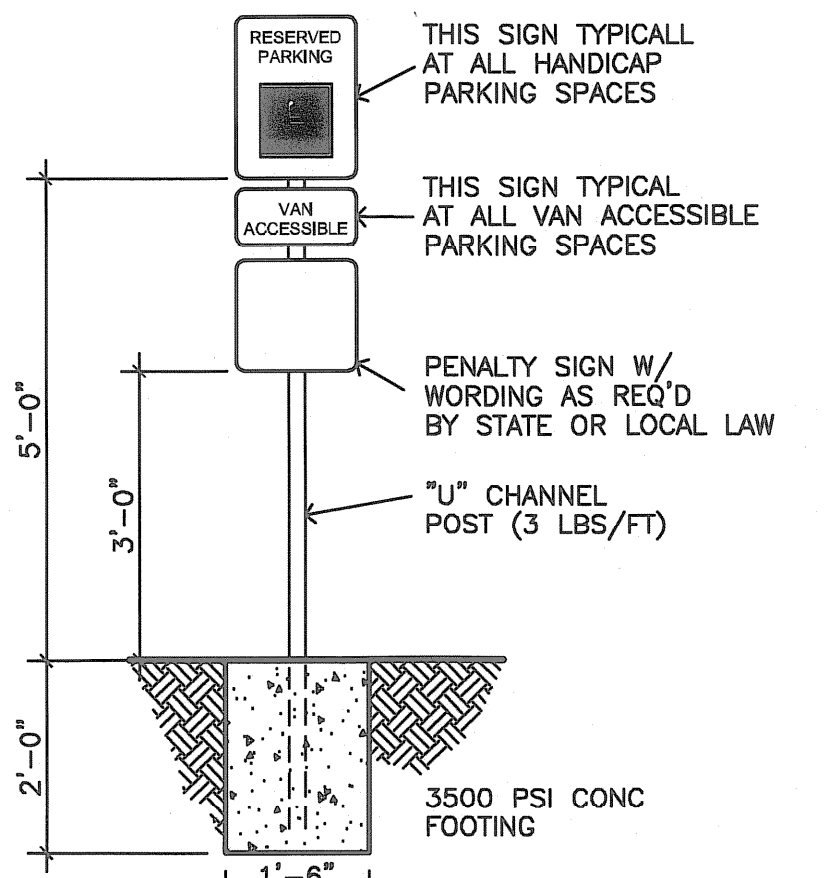


3 dumpster elevation
SCALE: 1/4" = 1'-0"

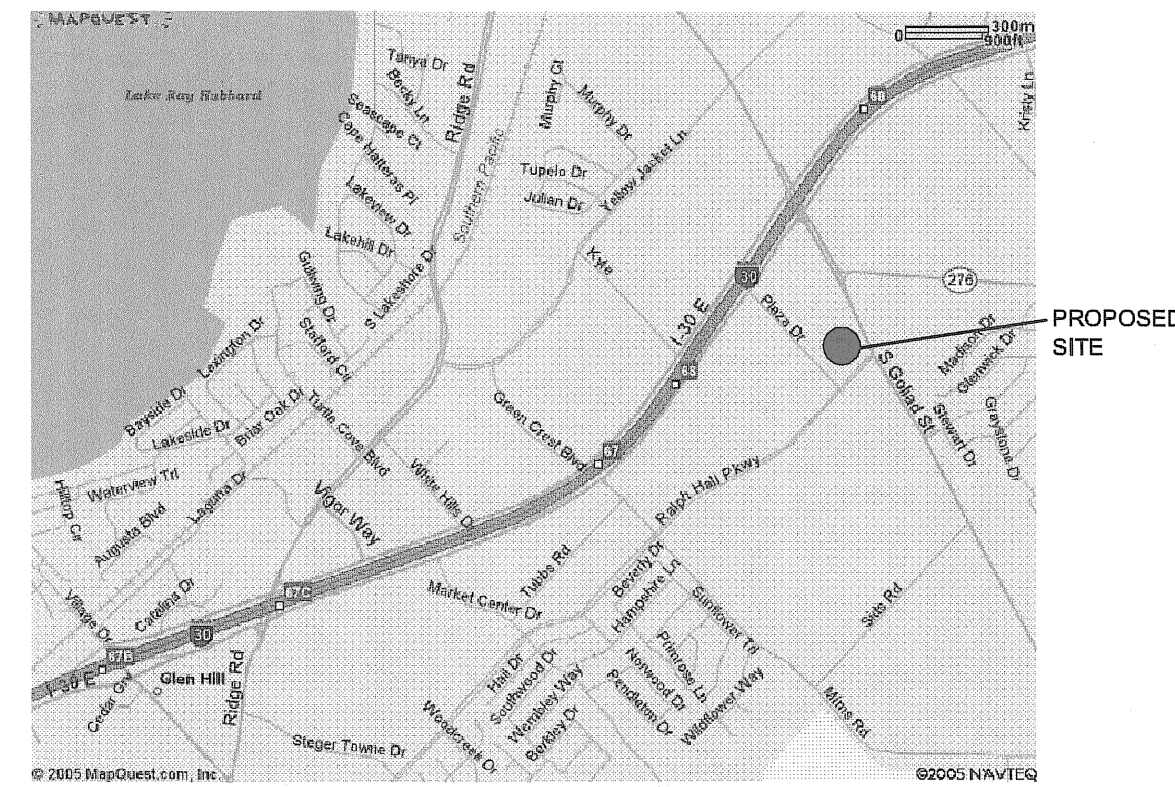


4 dumpster elevation (typ side)
SCALE: 1/4" = 1'-0"

1 site plan
SCALE: 1" = 20'



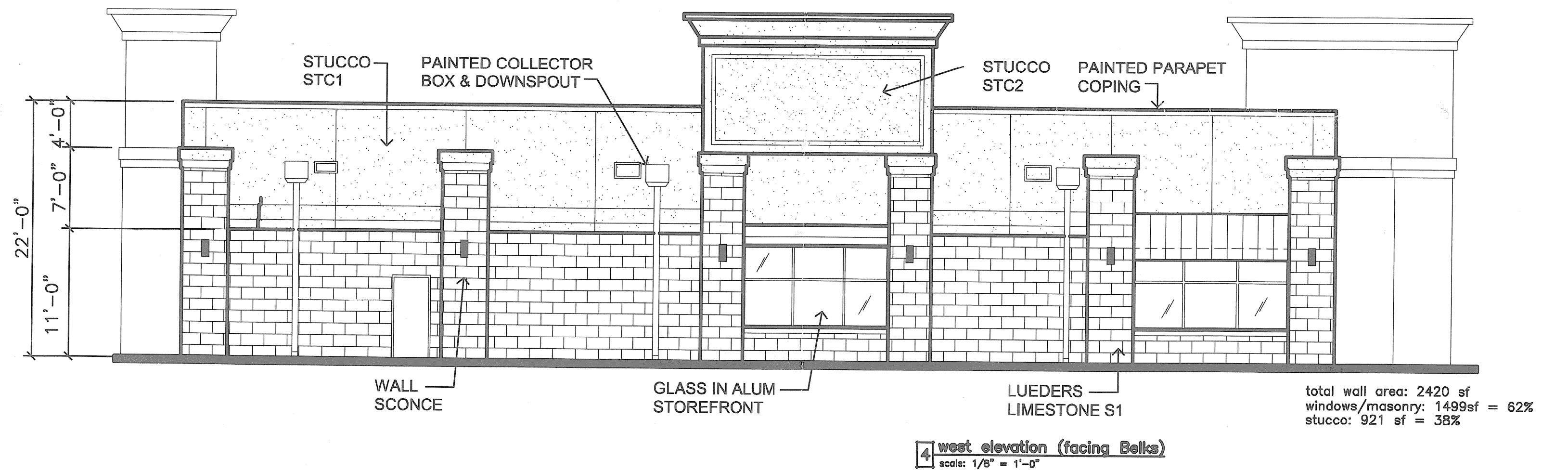
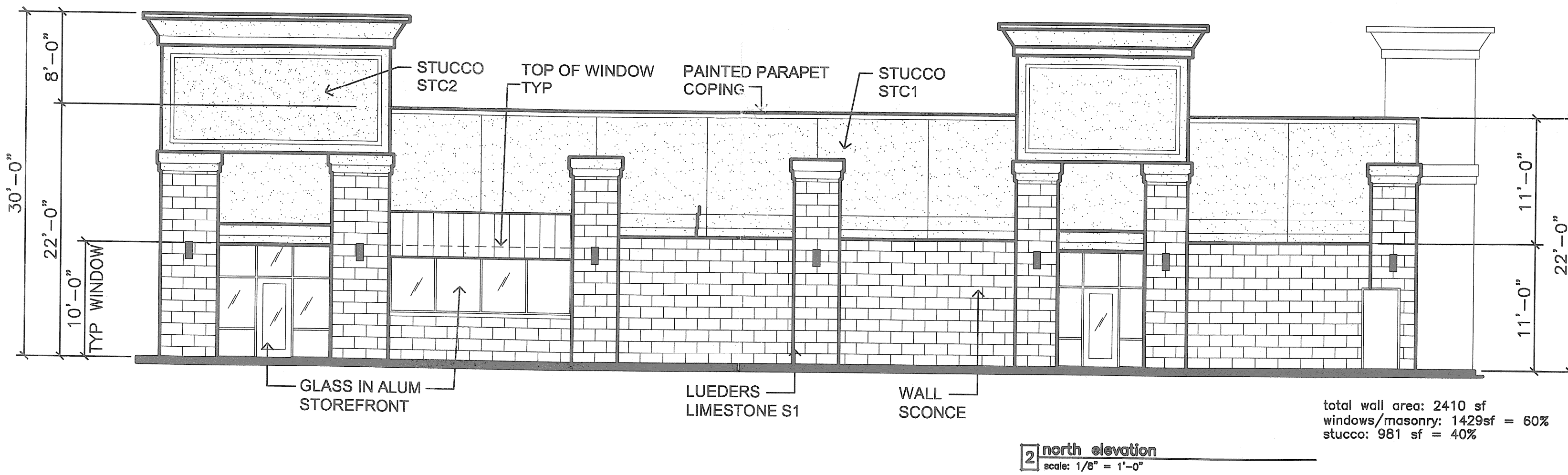
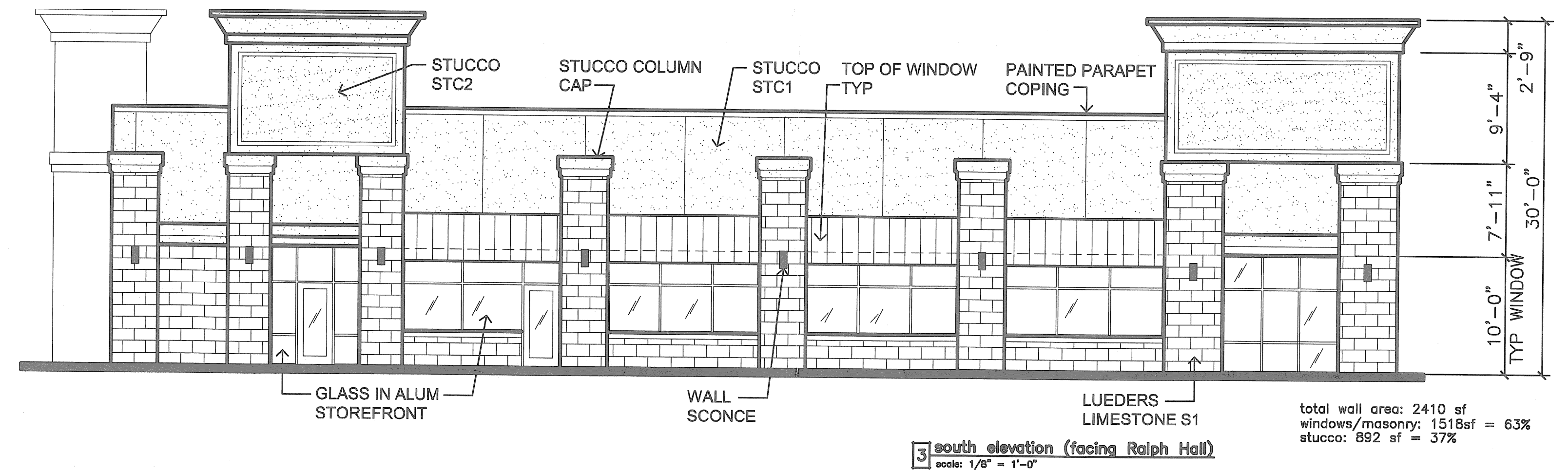
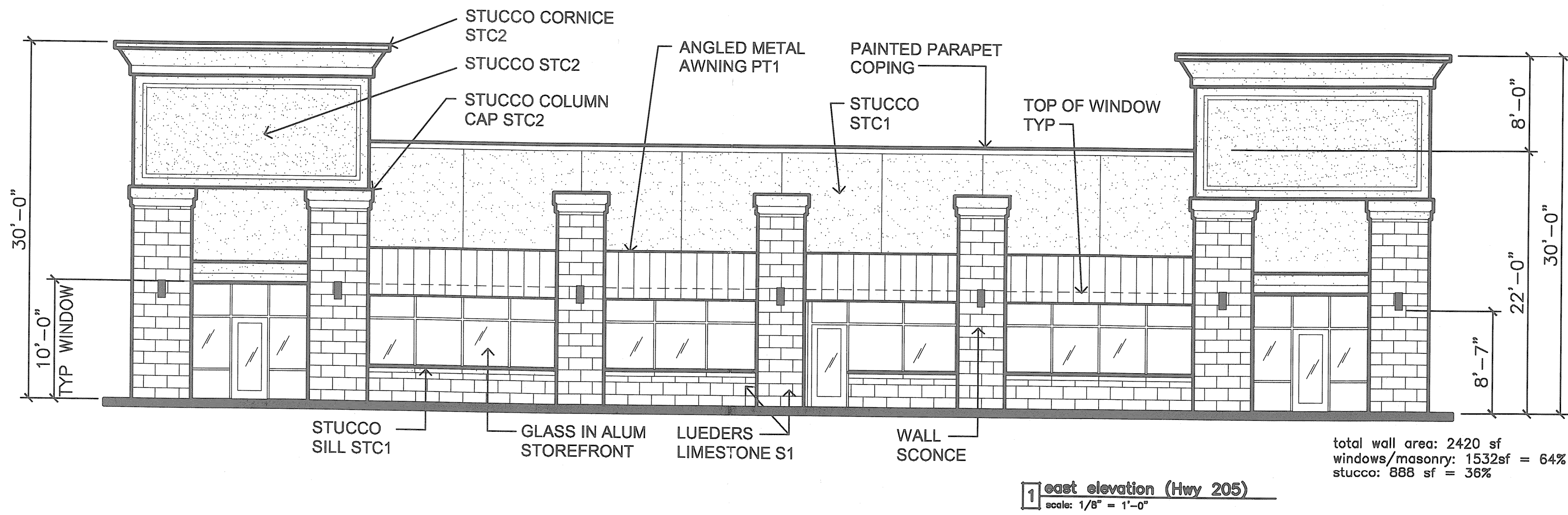
5 handicap parking sign
SCALE: 1/2" = 1'-0"



6 location map
nts

SITE INFORMATION	
LOT AREA	44,309 SF, 1.017 ACRE
BUILDING SQUARE FOOTAGE	1 STORY 11,200 SF
ZONING EXISTING USE	COMMERCIAL, SH205 OVERLAY
BUILDING HEIGHT / 1 STORY	30'-0" @ TOWER, 28'-0" @ PARAPET
BUILDING USE/TYPE	MULTI TENANT - DOCTORS OFFICE
LOT COVERAGE	25.27%
IMPERVIOUS SURFACE	10,373 SQ. FT. (DRIVE & PARKING)
FLAT WORK AT BLDG	3,823 SQ. FT.
PARKING REQUIRED:	1/200 SF DEVELOPED SPACE
TOTAL SPACES	11,200 SF / 200 = 56
HANDICAP REQUIRED	3 SPACES
PARKING PROVIDED:	60 SPACES (44 BY SHARED AGREEMENT)
STANDARD SPACES	1 SPACES
HANDICAP ACCESSIBLE	70 SPACES
TOTAL	
LANDSCAPE REQUIRED:	6,946 SQ. FT. (15% TOTAL LOT AREA)
LANDSCAPE PROVIDED:	15,493 SQ. FT.

PROJECT INFORMATION	
PROJECT:	HURST DEVELOPMENT LOT 8, ROCKWALL BUSINESS PARK - EAST SUBDIVISION
OWNER:	EPH, LLC 6435 S. FM 549 HEATH, TX 75032
LOCATION:	2380 S. Gollad ROCKWALL, TEXAS 75032
ARCHITECT:	MATTHEW KING PH: 469-742-0678
DATE:	OCTOBER 19, 2012 CITY SITE PLAN ISSUE NOVEMBER 7, 2012 CITY COMMENTS NOVEMBER 20, 2013 Ammended site plan submittal DECEMBER 9, 2013 City comments



MATERIAL SELECTIONS

- STC1: STUCCO, SPECIFIED PRODUCTS TEJAS BISCUIT #300-171A
- STC2: STUCCO, SPECIFIED PRODUCTS TEJAS IVORY CREME #300-171C
- S1: STONE, SPECIFIED PRODUCTS LUEDERS LIMESTONE
- PT1: PAINT, SHERWIN WILLIAMS #SW 7510 CHATEAU BROWN

NOTES:

ALL ROOF MOUNTED EQUIPMENT MUST BE VISUALLY SCREENED FROM STREET ROW AND ADJACENT PROPERTIES

PROJECT INFORMATION

PROJECT: HURST DEVELOPMENT
LOT 8, ROCKWALL BUSINESS PARK - EAST SUBDIVISION

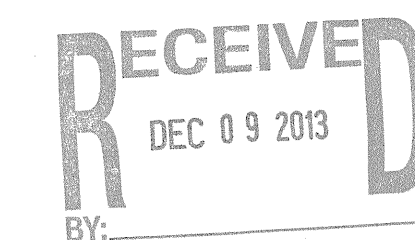
OWNER: EPH, LLC
6435 S. FM 549
HEATH, TX 75032

LOCATION: 2380 S. Gollad
ROCKWALL, TEXAS 75032

ARCHITECT: MATTHEW KING
PH: 469-742-0678

DATE: OCTOBER 19, 2012 CITY SITE PLAN ISSUE
NOVEMBER 7, 2012 CITY COMMENTS
NOVEMBER 8, 2012 CITY COMMENTS
NOVEMBER 20, 2013 Ammended site plan submittal
DECEMBER 9, 2013 City comments

BUILDING ELEVATIONS



2013 029

FILE COPY