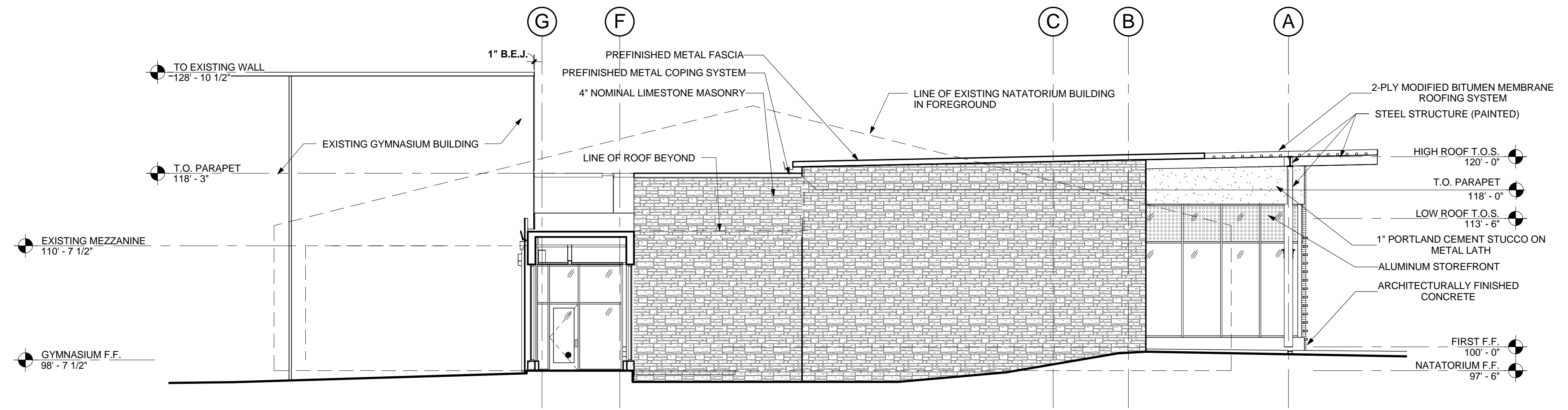
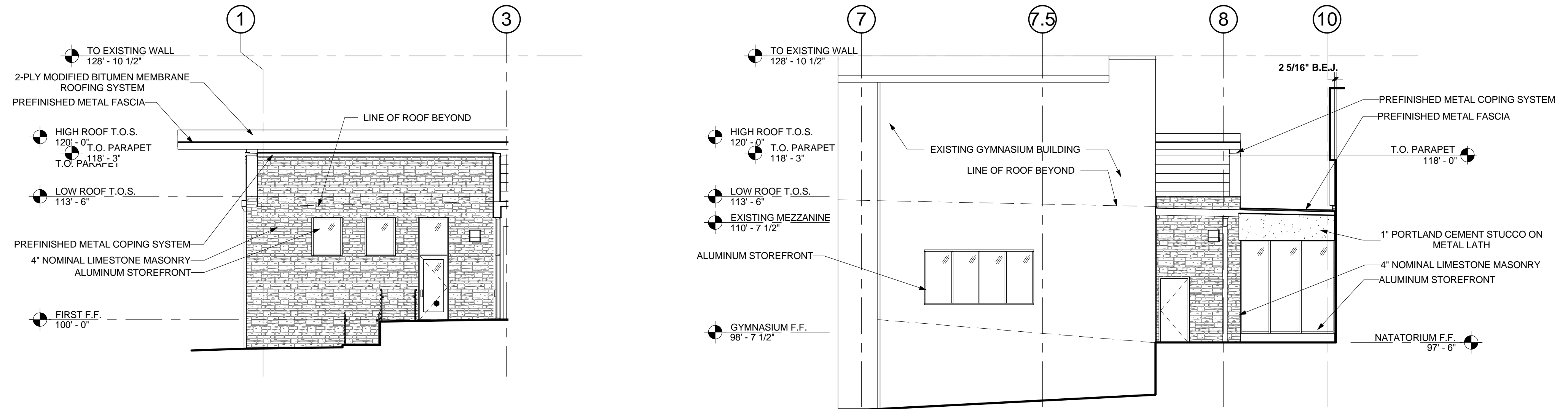
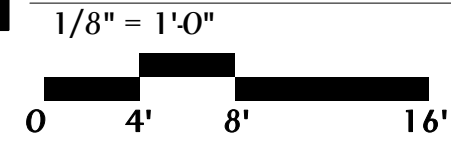


AREA OF MATERIALS								
DETAIL NO.	ORIENT.	VISIBLE FROM R.O.W.	SURFACE AREA (SF)	TOTAL MASONRY* (% AREA)	STONE (% MASONRY)	BRICK (% AREA)	STUCCO (% AREA)	CONCRETE (% AREA)
1/D4.0	NORTH	NO	1,269	1,246 (98%)	1,181 (95%)	-	65 (5%)	23 (2%)
2/D4.0	EAST	NO	630	630 (100%)	600 (95%)	-	30 (5%)	-
1/D4.1	SOUTH	YES	967	930 (96%)	300 (32%)	552 (57%)	78 (8%)	37 (4%)
2/D4.1	WEST	YES	2,003	1,912 (95%)	867 (45%)	512 (26%)	533 (27%)	85 (4%)
TOTAL AREA			4,869	4,718 (97%)	2,948 (72%)	1,064 (22%)	706 (14%)	145 (3%)

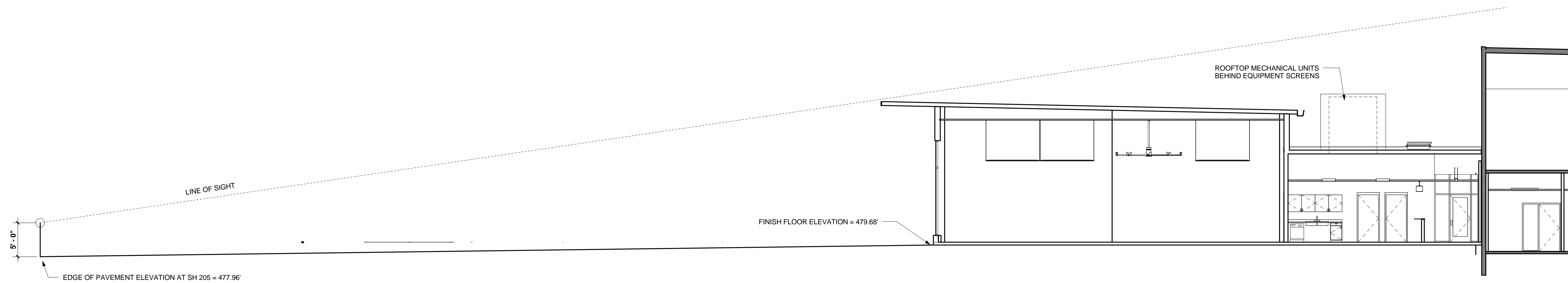
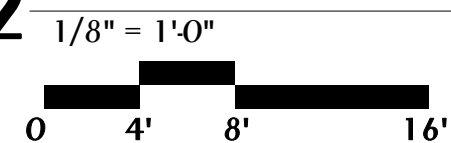
*TOTAL MASONRY EQUALS TOTAL OF ALL PRIMARY MATERIALS (BRICK, STONE, AND STUCCO)



1 EXTERIOR ELEVATION (NORTH)



2 EXTERIOR ELEVATION (EAST)



SIGHT LINE STUDY

1/8" = 1'-0"

BROWN REYNOLDS WAITFORD ARCHITECTS
3535 TRAVIS STREET
SUITE 250
DALLAS, TEXAS 75204
214.528.8704
WWW.BRWARCH.COM



COPYRIGHT © 2013
BROWN REYNOLDS WAITFORD ARCHITECTS, INC.
DATE NOVEMBER 7, 2013
DRAWN BY IR, AH
CHECKED BY CS, GD
BRW PROJECT NUMBER 213061.00

YMCA OF METROPOLITAN DALLAS
1210 NORTH COLIAD STREET
ROCKWALL, TEXAS 75087
972.560.3809

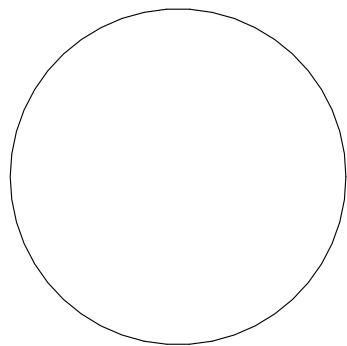
the

No.	Description	Date

D4.0

LOT 1, BLOCK A
ROCKWALL CO. BRANCH YMCA
CASE NUMBER SP2013-026

EXTERIOR ELEVATIONS



BROWN REYNOLDS WATFORD ARCHITECTS
 3535 TRAVIS STREET
 SUITE 250
 DALLAS, TEXAS 75204
 214.528.8704
 WWW.BRWARCH.COM



COPYRIGHT © 2013
 BROWN REYNOLDS WATFORD ARCHITECTS, INC.
 DATE NOVEMBER 7, 2013
 DRAWN BY IR, AH
 CHECKED BY CS, GD
 BRW PROJECT NUMBER 213061.00

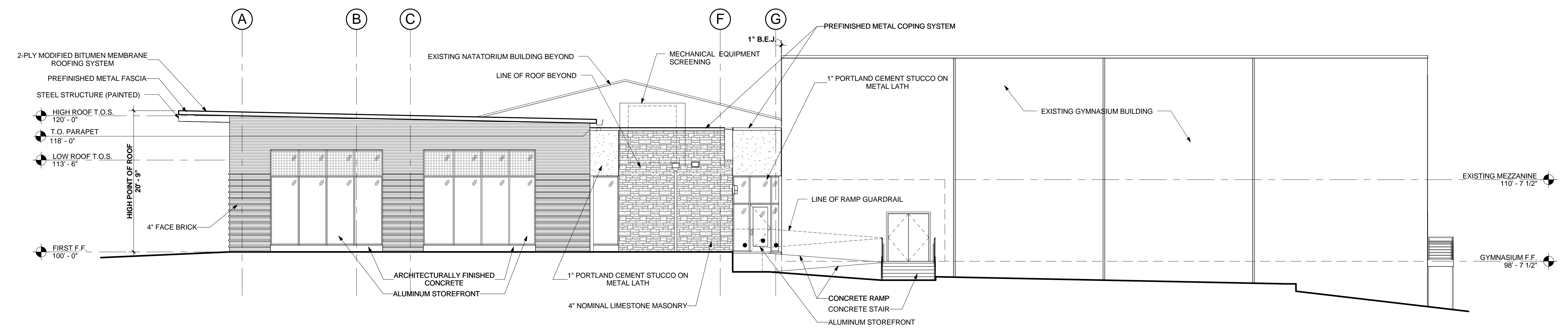
YMCA OF METROPOLITAN DALLAS
 1.E.R. CHILTON YMCA AT ROCKWALL
 1210 NORTH COLADO STREET
 ROCKWALL, TEXAS 75087
 972.560.3809

the

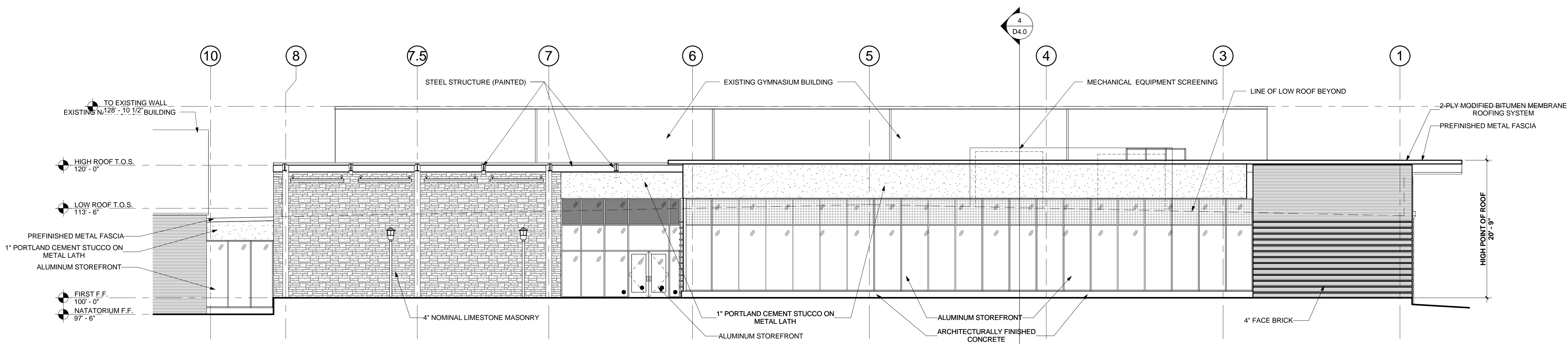
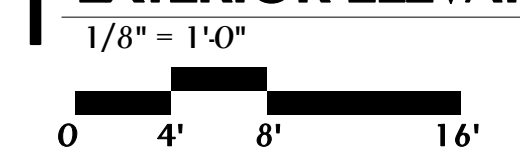
No.	Description	Date

D4.1

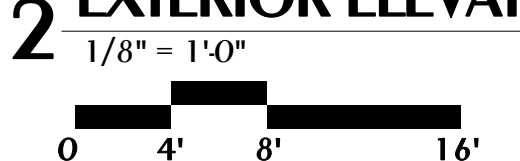
EXTERIOR ELEVATIONS



1 EXTERIOR ELEVATION (SOUTH)



2 EXTERIOR ELEVATION (WEST)



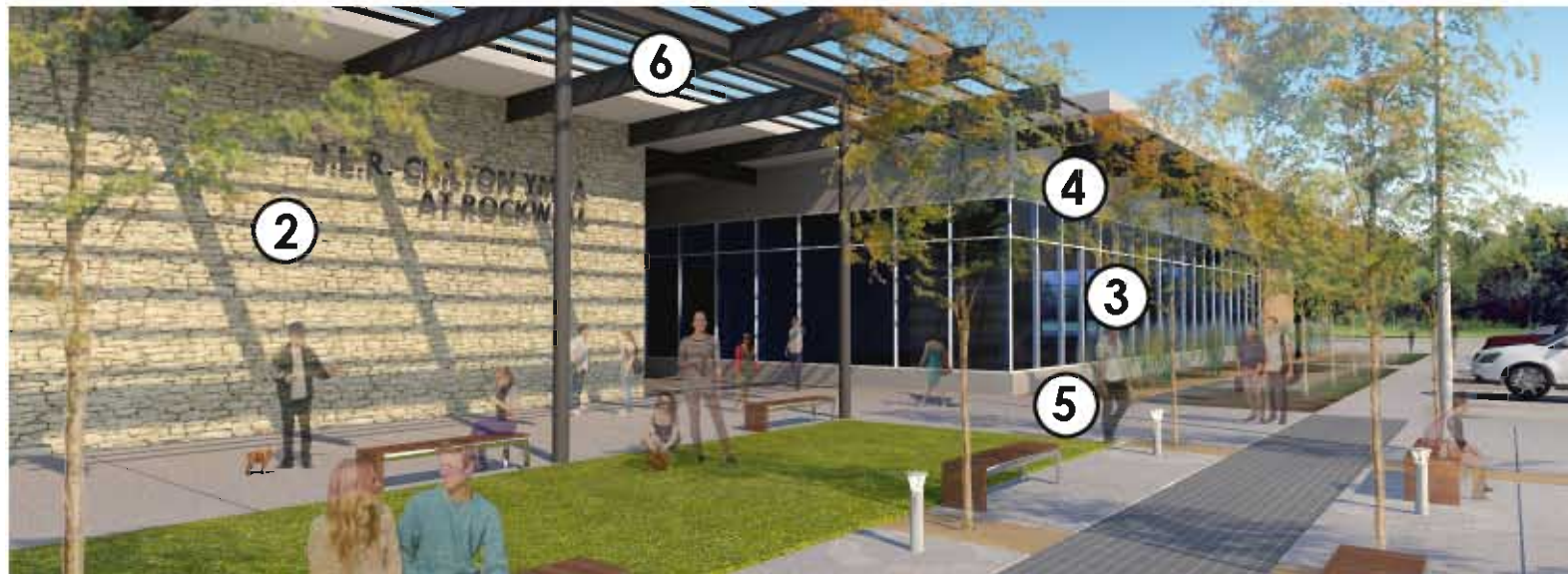
AREA OF MATERIALS								
DETAIL NO.	ORIENT.	VISIBLE FROM R.O.W.	SURFACE AREA (SF)	TOTAL MASONRY* (% AREA)	STONE (% MASONRY)	BRICK (% AREA)	STUCCO (% AREA)	CONCRETE (% AREA)
1/D4.0	NORTH	NO	1,269	1,246 (98%)	1,181 (95%)	-	65 (5%)	23 (2%)
2/D4.0	EAST	NO	630	630 (100%)	600 (95%)	-	30 (5%)	-
1/D4.1	SOUTH	YES	967	930 (96%)	300 (32%)	552 (57%)	78 (8%)	37 (4%)
2/D4.1	WEST	YES	2,003	1,912 (95%)	867 (45%)	512 (26%)	533 (27%)	85 (4%)
TOTAL AREA			4,869	4,718 (97%)	2,948 (72%)	1,064 (22%)	706 (14%)	145 (3%)

*TOTAL MASONRY EQUALS TOTAL OF ALL PRIMARY MATERIALS (BRICK, STONE, AND STUCCO)

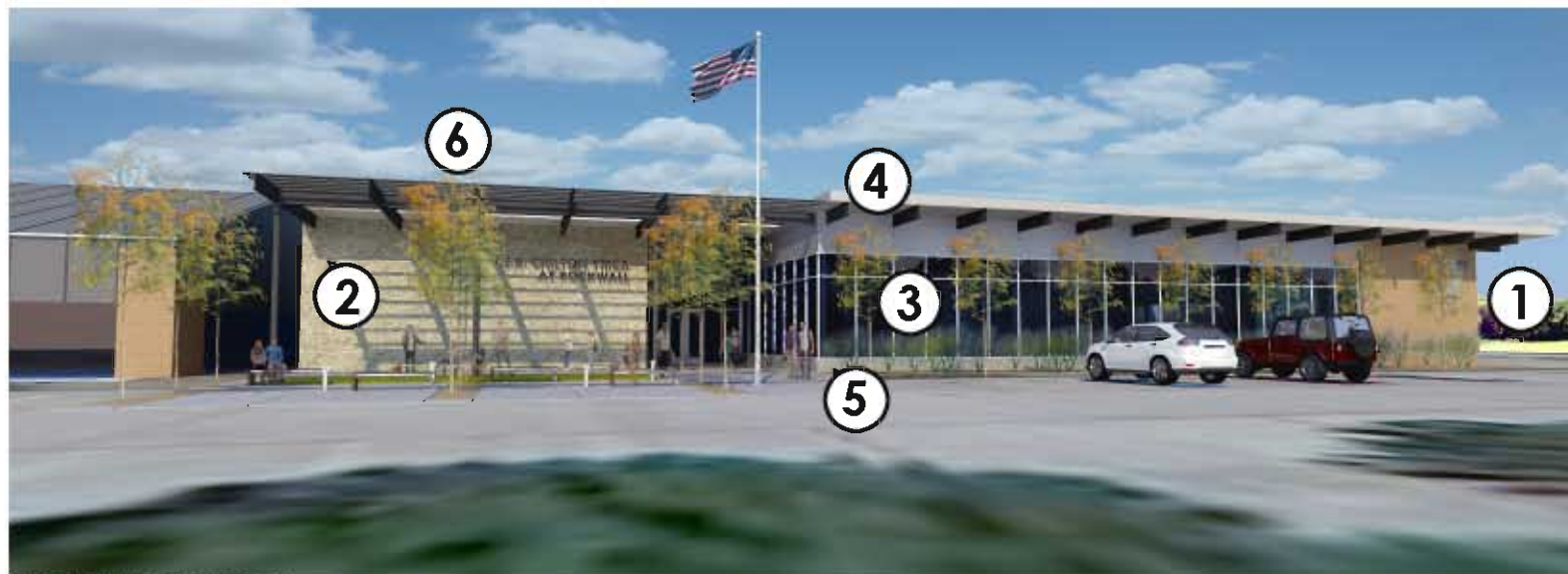
LOT 1, BLOCK A
 ROCKWALL CO. BRANCH YMCA
 CASE NUMBER SP2013-026



SOUTHWEST ELEVATION



WEST ELEVATION



WEST ELEVATION



1 BRICK MASONRY
ACME BRICK, WEATHERWOOD GRAY



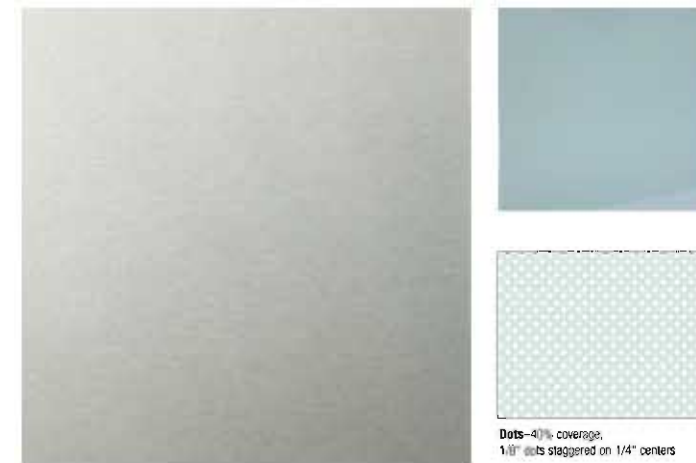
4 STUCCO



2 LIMESTONE MASONRY
TEXAS QUARRIES, WILSON'S BLUFF



5 ARCHITECTURALLY FINISHED CONCRETE



3 ALUMINUM STOREFRONT & GLAZING
CLEAR ANODIZED ALUMINUM
1" LOW-E CLEAR GLAZING
1" LOW-E PATTERNED GLAZING



6 STRUCTURAL STEEL

LOT 1, BLOCK A
ROCKWALL CO. BRANCH YMCA
CASE NUMBER SP2013-026

No.	Description	Date

PLANT LIST

TREES	COMMON NAME	BOTANICAL NAME	SIZE	REMARKS
6	DESERT WILLOW	CHILOPSIS LINEARIS	2" CALIPER	CONTAINER GROWN, 5' SPREAD MIN.
7	REDBUD	CERCIS CANADENSIS	2" CALIPER	SINGLE TRUNK, 10' HEIGHT MIN.
6	BALD CYPRESS	TAXODIUM DISTICHUM	5" CALIPER	(SHADE TREES PLANTED FOR MITIGATION) 16' HEIGHT, 6' SPREAD MIN.
4	CEDAR ELM	ULMUS CRASSIFOLIA	5" CALIPER	(SHADE TREES PLANTED FOR MITIGATION) 16' HEIGHT, 6' SPREAD MIN.

SHRUBS	COMMON NAME	BOTANICAL NAME	SIZE	REMARKS
15	PINK MUHLY GRASS	MUHLENBERGIA CAPILLARIS	7 GAL.	CONTAINER, FULL TOP OF CONTAINER
27	DWARF TEXAS SAGE	LEUCOPHYLLUM sp. 'COMPACTUM'	7 GAL.	CONTAINER, 36" HT. MIN.

GROUNDCOVERS	COMMON NAME	BOTANICAL NAME	SIZE	REMARKS
270	WEeping LOVEGRASS	EROGROSTIS CURVULA	4" POT	CONTAINER, FULL TOP OF CONTAINER

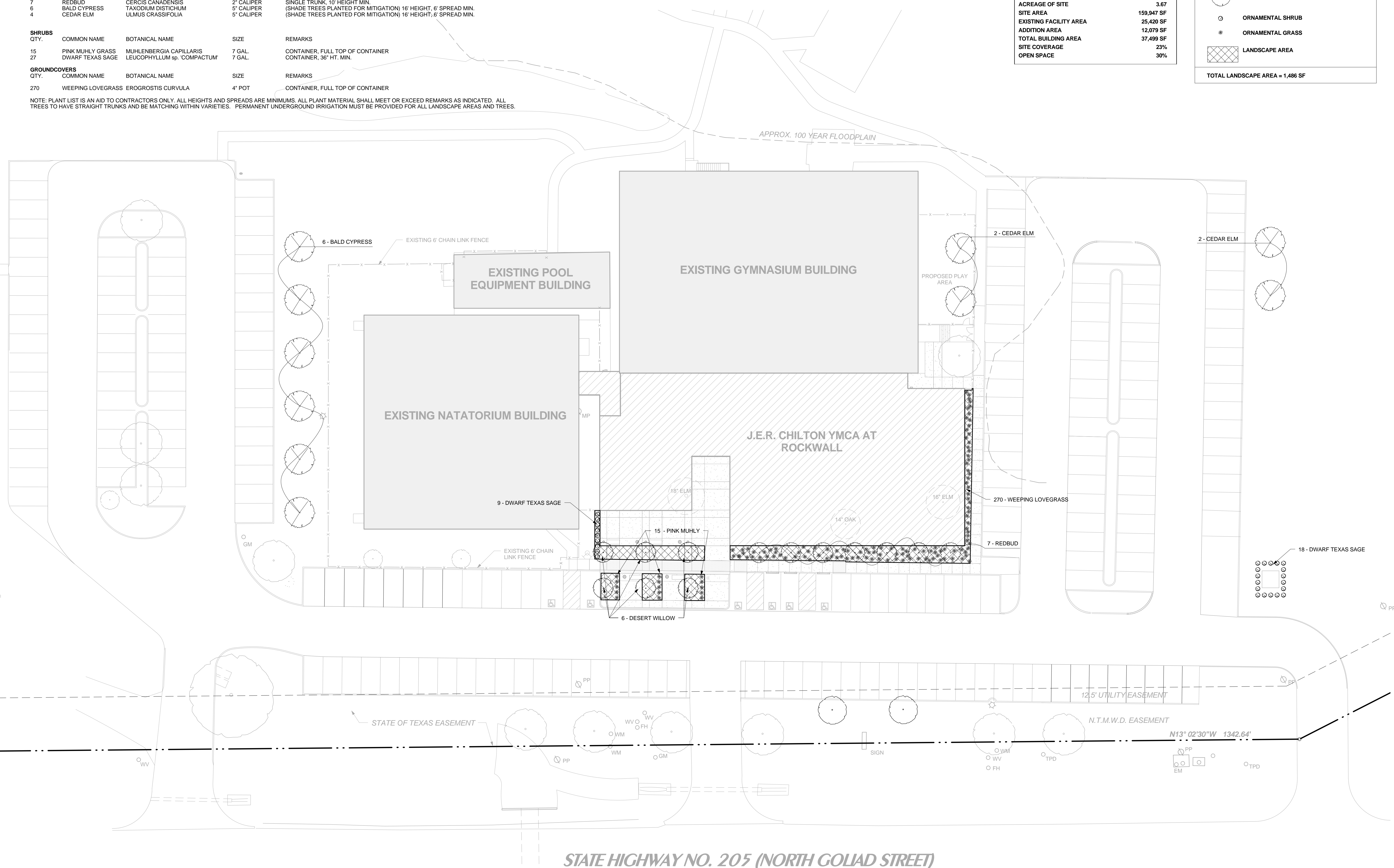
NOTE: PLANT LIST IS AN AID TO CONTRACTORS ONLY. ALL HEIGHTS AND SPREADS ARE MINIMUMS. ALL PLANT MATERIAL SHALL MEET OR EXCEED REMARKS AS INDICATED. ALL TREES TO HAVE STRAIGHT TRUNKS AND BE MATCHING WITHIN VARIETIES. PERMANENT UNDERGROUND IRRIGATION MUST BE PROVIDED FOR ALL LANDSCAPE AREAS AND TREES.

SITE SPECIFICATONS

ADDITION OCCUPANCY	1171
ACREAGE OF SITE	3.67
SITE AREA	159,947 SF
EXISTING FACILITY AREA	25,420 SF
ADDITION AREA	12,079 SF
TOTAL BUILDING AREA	37,499 SF
SITE COVERAGE	23%
OPEN SPACE	30%

LANDSCAPE LEGEND

- ORNAMENTAL TREE
 - ORNAMENTAL SHRUB
 - ORNAMENTAL GRASS
 - LANDSCAPE AREA
- TOTAL LANDSCAPE AREA = 1,486 SF



1 LANDSCAPE PLAN
 1" = 20'-0"

LOT 1, BLOCK A
ROCKWALL CO. BRANCH YMCA
 CASE NUMBER SP2013-026

BROWN REYNOLDS WAIFORD ARCHITECTS
 3535 TRAVIS STREET
 SUITE 250
 DALLAS, TEXAS 75204
 214.528.8704
 WWW.BRWARCH.COM

COPYRIGHT © 2013
 BROWN REYNOLDS WAIFORD ARCHITECTS, INC.
 DATE: NOVEMBER 7, 2013
 DRAWN BY: IR, AH
 CHECKED BY: CS, GD
 BRW PROJECT NUMBER: 213061.00

YMCA OF METROPOLITAN DALLAS
 J.E.R. CHILTON YMCA AT ROCKWALL
 1210 NORTH GOLIAD STREET
 ROCKWALL, TEXAS 75087
 972.560.3809

No.	Description	Date

D3.0

LANDSCAPE PLAN

TREE PRESERVATION LEGEND

	EXISTING TREE TO BE REMOVED
	EXISTING TREE TO REMAIN
	PROPOSED SHADE TREE

SITE SPECIFICATONS

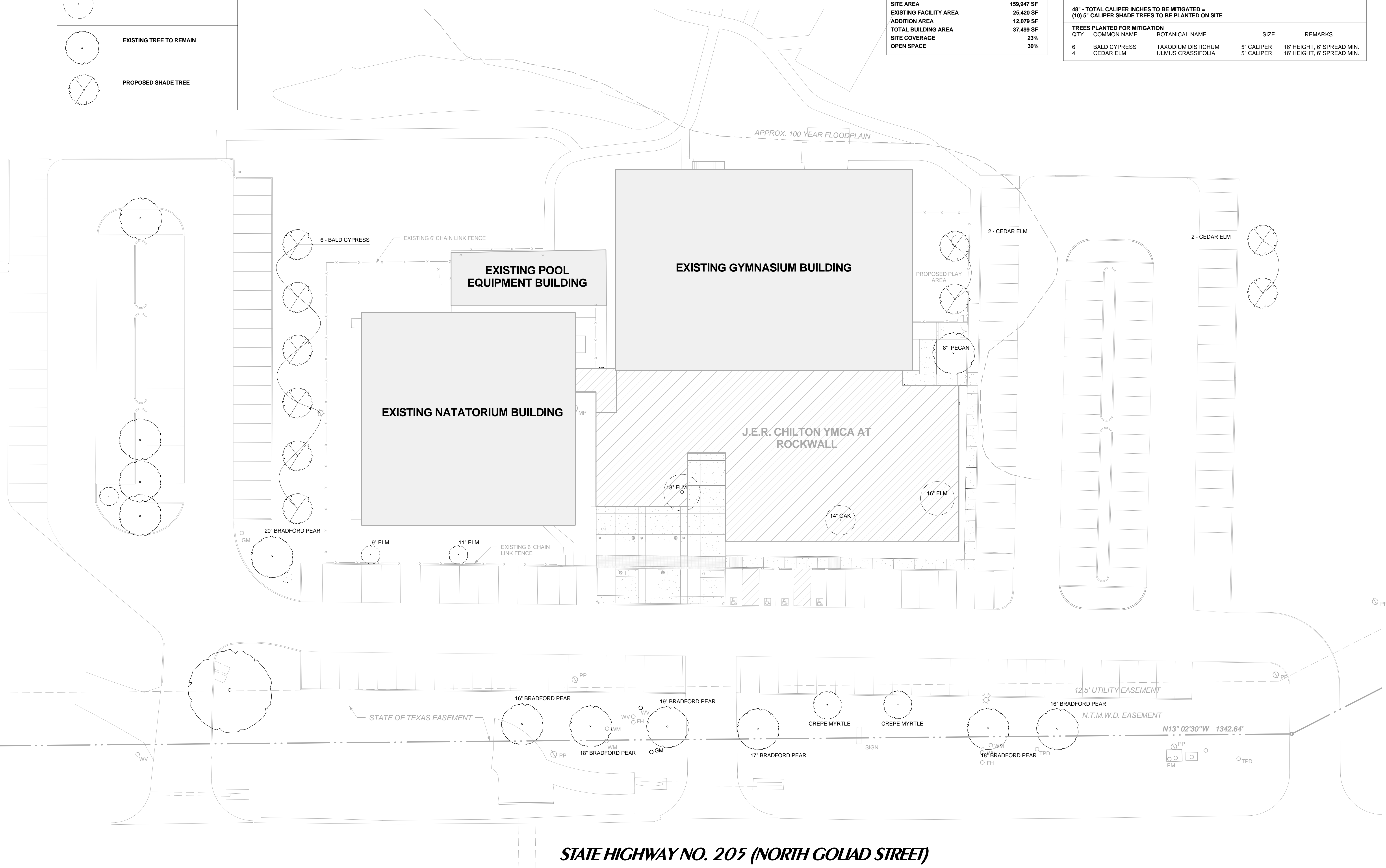
ADDITION OCCUPANCY	1171
ACREAGE OF SITE	3.67
SITE AREA	159,947 SF
EXISTING FACILITY AREA	25,420 SF
ADDITION AREA	12,079 SF
TOTAL BUILDING AREA	37,499 SF
SITE COVERAGE	23%
OPEN SPACE	30%

TREE MITIGATION

TREES TO BE REMOVED:
 18" ELM
 14" OAK
 16" ELM

48" - TOTAL CALIPER INCHES TO BE MITIGATED =
 (10) 5" CALIPER SHADE TREES TO BE PLANTED ON SITE

TREES PLANTED FOR MITIGATION		SIZE	REMARKS
QTY.	COMMON NAME	BOTANICAL NAME	
6	BALD CYPRESS	TAXODIUM DISTICHUM	5" CALIPER 16' HEIGHT, 6' SPREAD MIN.
4	CEDAR ELM	ULMUS CRASSIFOLIA	5" CALIPER 16' HEIGHT, 6' SPREAD MIN.



STATE HIGHWAY NO. 205 (NORTH GOLIAD STREET)

1 TREE MITIGATION PLAN
 1" = 20'-0"
 0 5' 10' 20'

**LOT 1, BLOCK A
 ROCKWALL CO. BRANCH YMCA**
 CASE NUMBER SP2013-026

BROWN REYNOLDS WAITFORD
 ARCHITECTS
 3535 TRAVIS STREET
 SUITE 250
 DALLAS, TEXAS 75204
 214.528.8704
 WWW.BRWARCH.COM

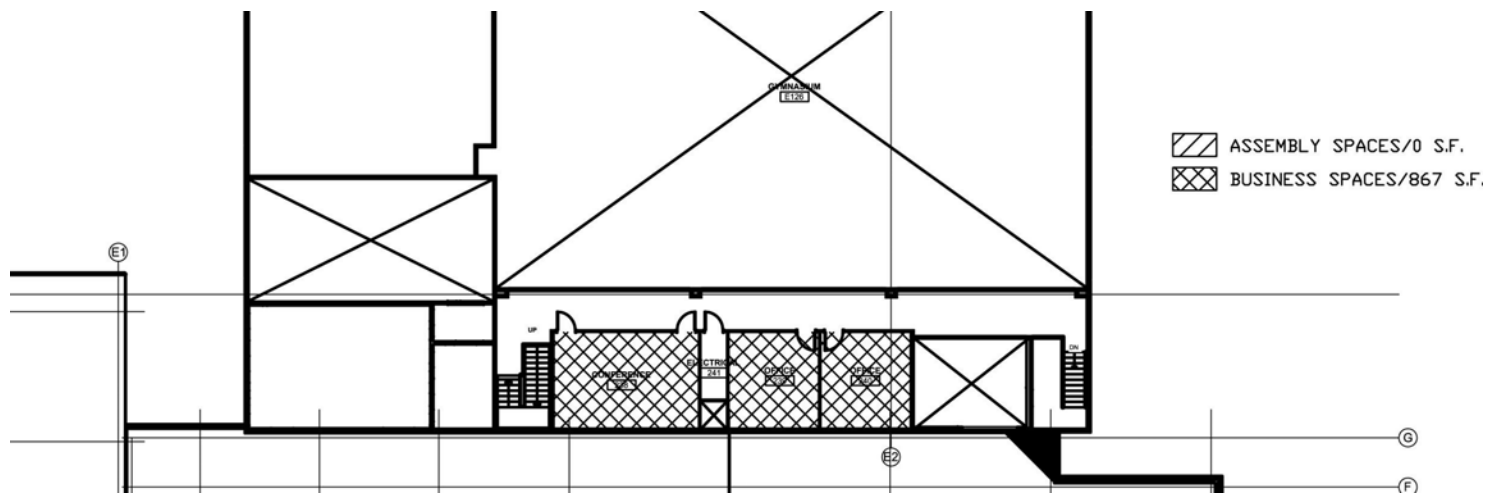
COPYRIGHT © 2013
 BROWN REYNOLDS WAITFORD ARCHITECTS, INC.
 DATE NOVEMBER 7, 2013
 DRAWN BY IR, AH
 CHECKED BY CS, GD
 BRW PROJECT NUMBER 213061.00

YMCA OF METROPOLITAN DALLAS
 J.E.R. CHILTON YMCA AT ROCKWALL
 1210 NORTH GOLIAD STREET
 ROCKWALL, TEXAS 75087
 972.560.3809

the

No.	Description	Date

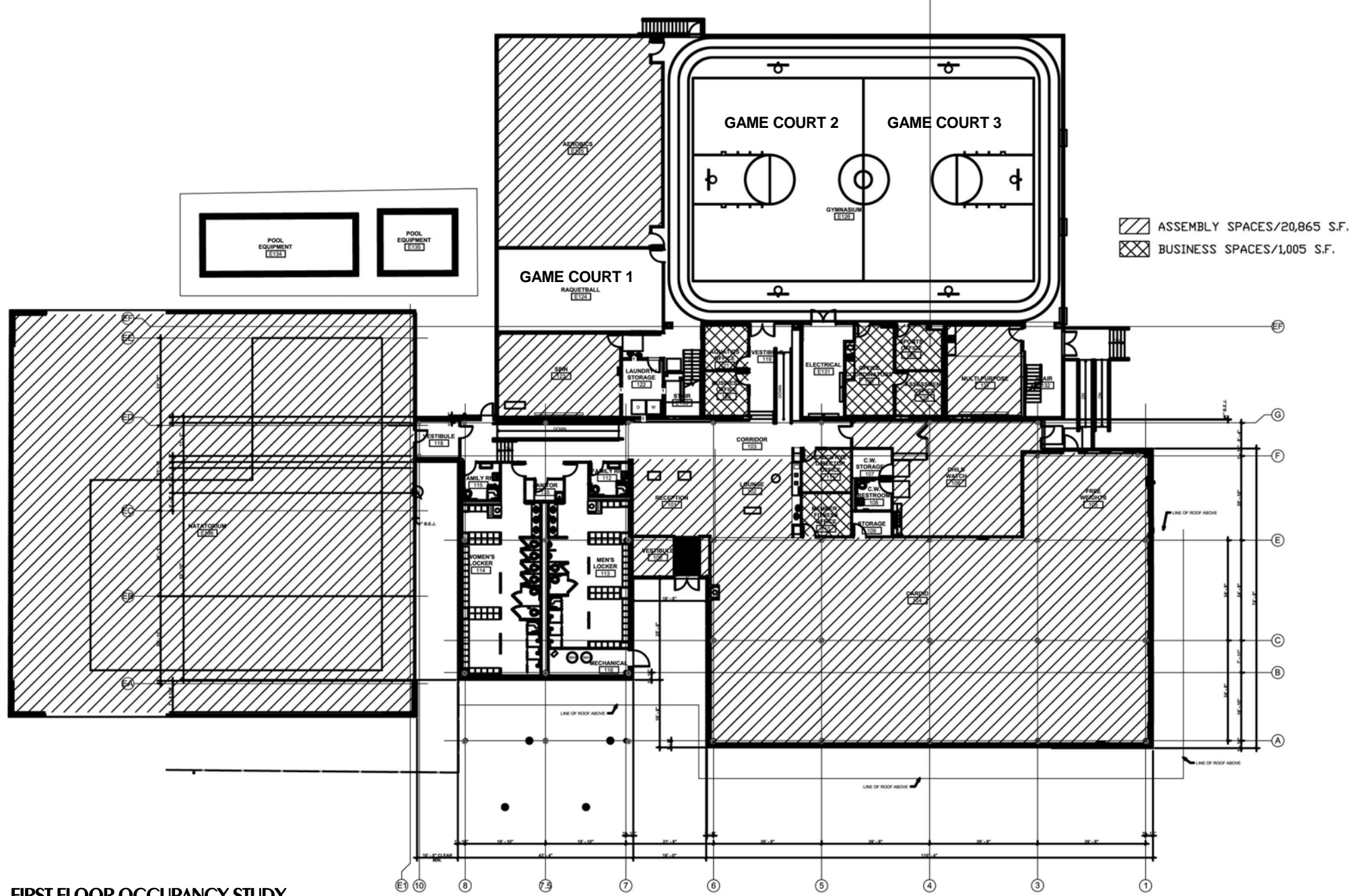
D2.0
 TREE MITIGATION PLAN



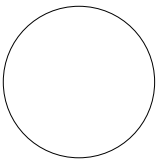
SITE SPECIFICATIONS	
ADDITION OCCUPANCY	1171
ACREAGE OF SITE	3.67
SITE AREA	159,947 SF
EXISTING FACILITY AREA	25,420 SF
ADDITION AREA	12,079 SF
TOTAL BUILDING AREA	37,499 SF
SITE COVERAGE	23%
OPEN SPACE	30%

REQUIRED PARKING	
PARKING SPACES REQUIRED WITH NEW ADDITION	96
3 PER GAME COURT	9
20,370 S.F. ASSEMBLY SPACE AT 1 SPACE / 250 S.F.	78
1,872 S.F. BUSINESS SPACE SPACES AT 1 SPACE / 250 S.F.	7
NEW HANDICAPPED PARKING SPACES	2
TOTAL REQUIRED SPACES	96
TOTAL PROVIDED SPACES	209

2 SECOND FLOOR OCCUPANCY STUDY
1" = 40'-0"



1 FIRST FLOOR OCCUPANCY STUDY
1" = 40'-0"



BROWN REYNOLDS WAITFORD ARCHITECTS
1500 AVIS STREET
SUITE 250
DALLAS, TEXAS 75204
214.528.8704
WWW.BRWARCH.COM

COPYRIGHT © 2013
BROWN REYNOLDS WAITFORD ARCHITECTS, INC.
NOVEMBER 7, 2013
DATE
DRAWN BY IR, AH
CHECKED BY CS, CD
BRW PROJECT NUMBER 21706100

YMCA OF METROPOLITAN DALLAS
J.E.R. CHILTON YMCA AT ROCKWALL
1210 NORTH GOLAND STREET
ROCKWALL, TEXAS 75087
972.560.3809

No.	Description	Date

D1.1

PARKING STUDY

LOT 1, BLOCK A
ROCKWALL CO. BRANCH YMCA
CASE NUMBER SP2013-026