

$$\Delta = 021^{\circ}50'00''$$

$$R = 518.69'$$

$$L = 197.65'$$

$$\text{Ch L} = 196.46'$$

$$\text{Ch B} = \text{N}26^{\circ}36'19''\text{E}$$

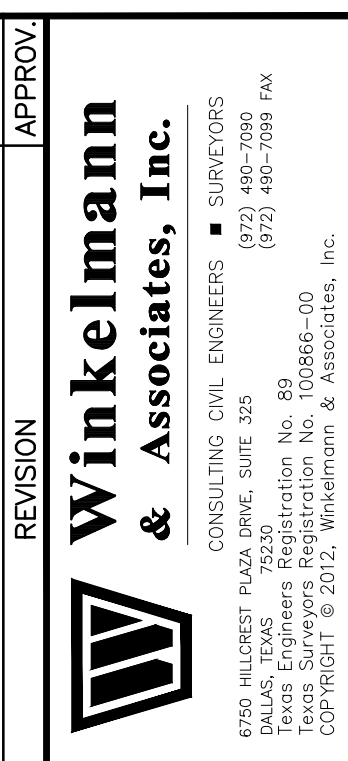
VICINITY MAP  
NOT TO SCALE

LINE #	BEARING	DISTANCE
L1	S52°30'25"E	41.50'
L2	S37°31'19"W	45.00'
L3	S52°28'41"E	43.50'
L4	N37°31'19"E	77.14'
L5	N45°42'38"W	20.00'
L6	S45°42'38"E	43.00'

LEGEND			
PP	Power Pole	IRF	Iron Rod Found
GW	Guy Wire	IRS	Iron Rod Set
MH	Manhole	IRSW	Iron Rod Set w/ cap "W"
WV	Water Valve	CIRS	Iron Rod Found w/ cap "C"
TP	Telephone Pedestal	XCS	X Cut in Concrete Set
WM	Water Meter	XCF	X Cut in Concrete Found
FH	Fire Hydrant	PK	PK Nail Set
LP	Light Pole	PKF	PK Nail Found
CO	Clean Out	SS	Sanitary Sewer
AC	Air Conditioner	ST	Storm Sewer
TV	Cable Box	TF	Transformer pad
SB	Signal Box	GM	Gas Meter
SP	Signal Pole	GMK	Gas Marker
SN	Sign	TSL	Traffic Sign
CM	Control Monument	UGC	Underground Cable Marker
		EB	Electric Box
		EM	Electric Meter

NOTE:  
SEPARATE SIGN PERMIT WILL BE REQUIRED.

KROGER SW 575			
	RETAIL LOT 17	KROGER LOT 18	RETAIL LOT 19
LAND AREA	92,612 sf 2.126 Ac.	381,584 sf 8.760 Ac.	153,056 sf 3.514 Ac.
USE	RETAIL	RETAIL	RETAIL
PKG. SPCS. REQ'D.	69	362	93
BLDG. AREA EXISTING	17,179 sf	73,770 sf	30,052 sf
BLDG. AREA PROP.	0 sf	16,693 sf	-6,731 sf
BLDG. AREA TOTAL	17,179 sf	90,463 sf	23,321 sf
COVERAGE	18.55%	23.71%	15.24%
EXISTING HC PKG. SPCS.	4	8	5
PROP. HC PKG. SPCS.	4	10	5
EXISTING PKG. SPCS.	95	275	267
PROP. PKG. SPCS.	95	354	204
TOTAL EX. PKG. SPCS.	99	283	272
TOTAL PROP. PKG. SPCS.	99	364	209
PKG. RATIO	PROP. 5.76:1	PROP. 4.02:1	PROP. 8.96:1



E. NEAL SURVEY, ABSTRACT NO. 207  
CITY OF ROCKWALL, TEXAS  
ROCKWALL COUNTY, TEXAS  
KROGER TEXAS L.P.  
1331 E. AIRPORT FREEWAY  
IRVING, TEXAS 75062

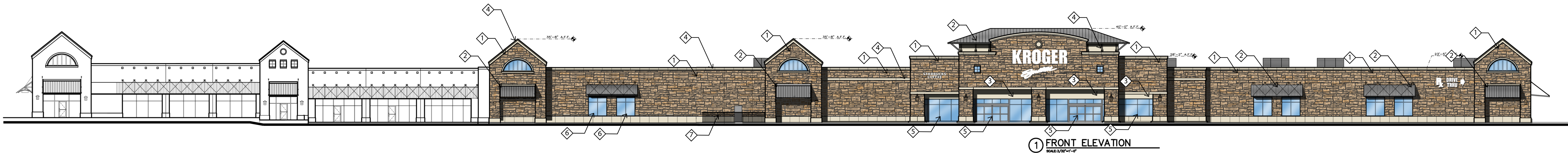
PRELIMINARY NOT  
FOR CONSTRUCTION  
SITE PLAN  
HORIZON RIDGE ADDITION  
KROGER SW575 - 2935 RIDGE ROAD  
ROCKWALL, TEXAS

Scale: 1:50  
Date: JULY 19, 2013  
File: 31563-SITE PLAN  
Project No.: 31563.01(20)



PROPOSED EXTERIOR FINISHES

- ① FIELD STONE: LONE STAR STONE, NAVARRO LEDGE
- ② METAL ROOF AND AWNINGS: BERRIDGE, PREWEATHERED GALVALUME
- ③ EIFS FINISH OVER CONCRETE BASE: DRYVIT, #111 PRARIE CLAY
- ④ EIFS CORNICE AND ACCENTS: DRYBIT, #449 BUCKSKIN
- ⑤ MULLIONS: CLEAR ANODIZED ALUMINUM
- ⑥ OPAQUE DECORATIVE GLASS
- ⑦ METAL FENCE



KROGER SW 575 ROCKWALL, Texas  
**KROGER**

EL01

SCALE: NTS ■ JOB#: 13023 ■ ISSUE DATE: 07.15.2013  
 APPROVED BY: \_\_\_\_\_ DATE: \_\_\_\_\_

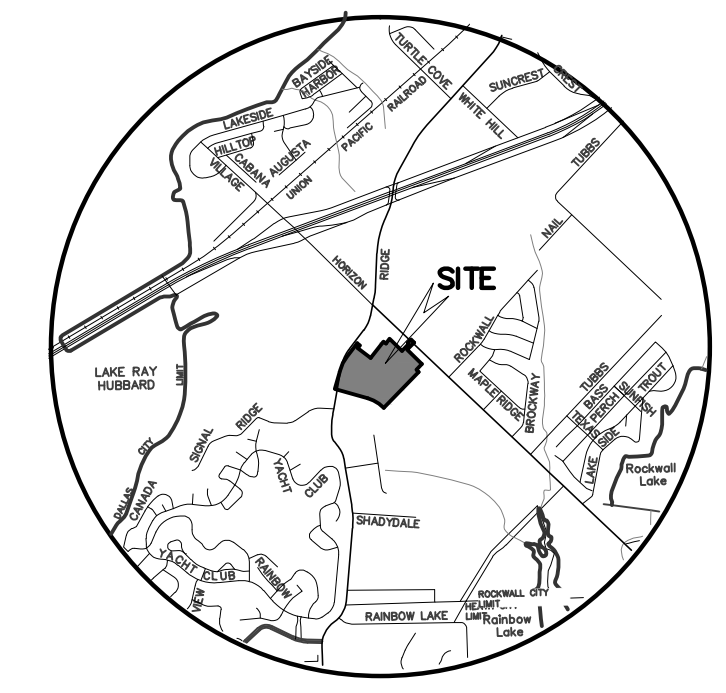
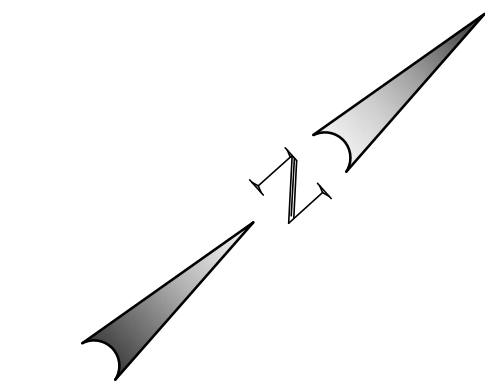
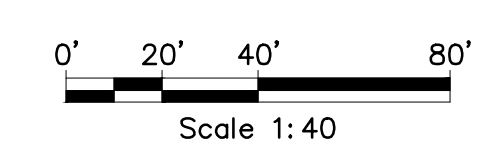
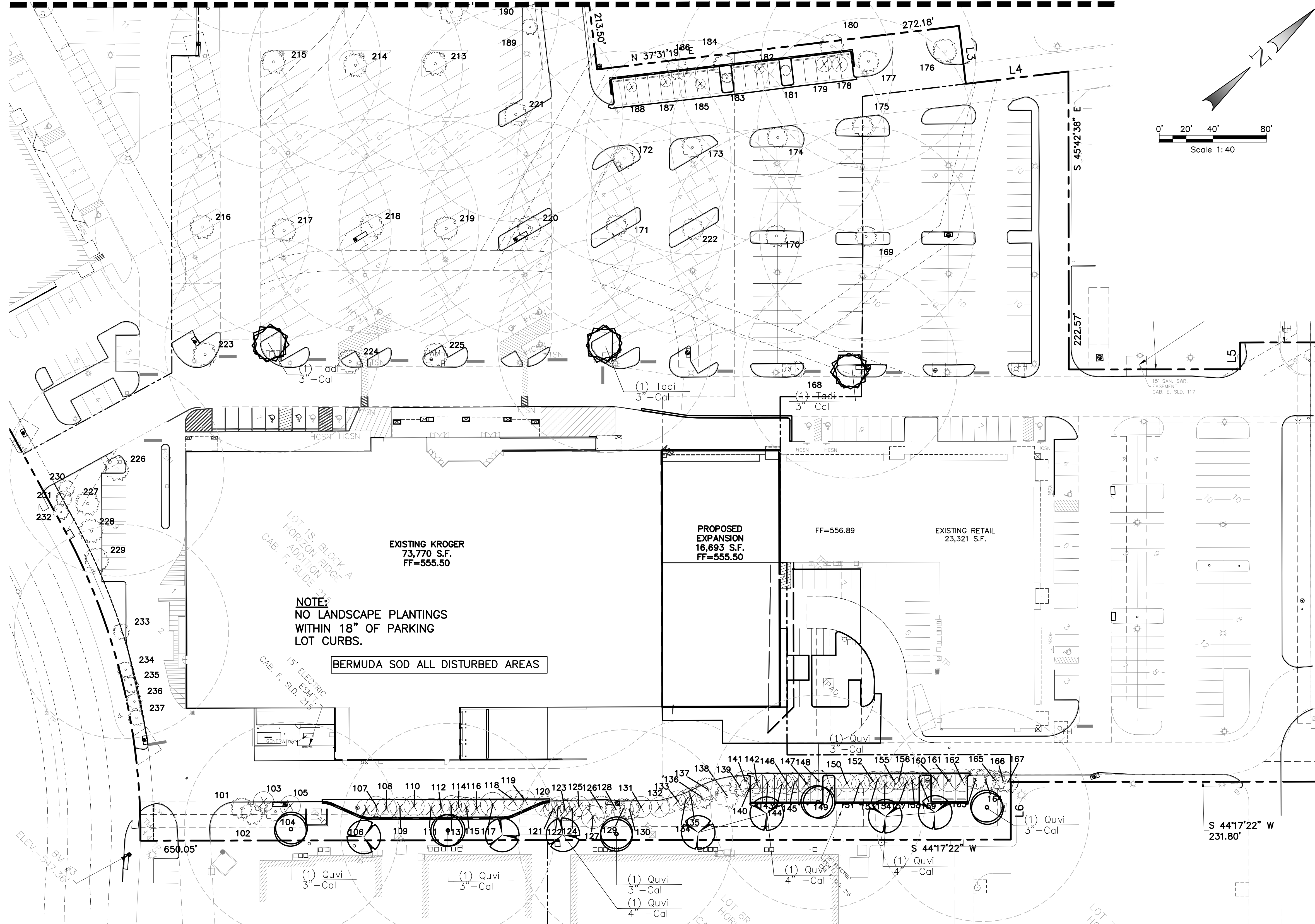
COPYRIGHT © 2011 O'BRIEN  
 THESE DRAWINGS, OR PARTS THEREOF, MAY NOT BE REPRODUCED IN ANY FORM, BY ANY METHOD,  
 FOR ANY PURPOSE, WITHOUT PRIOR WRITTEN CONSENT FROM O'BRIEN & ASSOCIATES, INC.



O'BRIEN



MATCHLINE 1, SHEET L-2



VICINITY MAP  
NOT TO SCALE

NOTE:  
NO LANDSCAPE PLANTINGS  
WITHIN 18" OF PARKING  
LOT CURBS.

BERMUDA SOD ALL DISTURBED AREAS

EXISTING KROGER  
73,770 S.F.  
FF=555.50

PROPOSED EXPANSION  
16,693 S.F.  
FF=555.50

EXISTING RETAIL  
23,321 S.F.

REF SHEET L-2 FOR ORDINANCE AND NOTES  
REF SHEET L-3 FOR TREE SURVEY

PLANT LIST

Symbol	Quantity	Code Name	Scientific Name	Common Name	Planting Size	Comments
⊙	5	Quvi	Quercus virginiana	Southern live oak	3"-Cal	B&B, FULL, SINGLE STRAIGHT TRUNK
⊗	7	Quvi	Quercus virginiana	Southern live oak	4"-Cal	B&B, FULL, SINGLE STRAIGHT TRUNK
⊙	3	Tadi	Taxodium distichum	Bald cypress	3"-Cal	B&B, FULL, SINGLE STRAIGHT TRUNK
⊙	74	IlvoN	Ilex vomitoria 'Nana'	Dwarf yaupon	Existing	
⊙	12	Rain	Raphiolepis indica	Indian hawthorn	Existing	

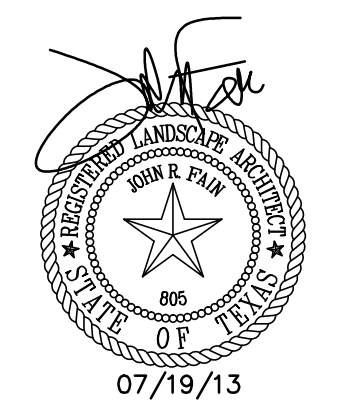
TEMPORARY IRRIGATION WILL BE REQUIRED TO ESTABLISH TURF IN ALL DISTURBED AREAS WITHOUT A PERMANENT IRRIGATION SYSTEM. SOD TURF IN ALL DISTURBED AREAS AS IDENTIFIED ON GRADING AND EROSION CONTROL PLANS.

**PRELIMINARY NOT FOR CONSTRUCTION**  
**SW 575**

E. NEAL SURVEY, ABSTRACT NO. 207  
CITY OF ROCKWALL  
ROCKWALL COUNTY, TEXAS  
KROGER TEXAS L.P.  
1331 E. AIRPORT FREEWAY  
IRVING, TEXAS 75062

LANDSCAPE PLAN  
HORIZON RIDGE ADDITION  
KROGER SW575 - 2935 RIDGE ROAD  
ROCKWALL, TEXAS

Scale: 1" = 40'  
Date: JULY 19, 2013  
File: 31563-LAN  
Project No.: 31563.01(20)



THIS ELECTRONIC DRAWING FILE IS RELEASED UNDER THE AUTHORITY OF JOHN R. FAIN, LANDSCAPE ARCHITECT REGISTRATION NUMBER 805 ON 07/19/13, WHO MAINTAINS THE ORIGINAL FILE. THIS ELECTRONIC DRAWING FILE MAY BE USED AS A BACKGROUND DRAWING, PURSUANT TO RULE 310.017 OF THE RULES AND REGULATIONS OF THE TEXAS BOARD OF ARCHITECTURAL EXAMINERS. THE USER OF THIS ELECTRONIC DRAWING FILE AGREES TO ASSUME ALL RESPONSIBILITY FOR ANY MODIFICATION TO OR USE OF THIS DRAWING FILE THAT IS INCONSISTENT WITH THE REQUIREMENTS OF THE RULES AND REGULATIONS OF THE TEXAS BOARD OF ARCHITECTURAL EXAMINERS. NO PERSON MAY MAKE MODIFICATIONS TO THIS ELECTRONIC DRAWING FILE WITHOUT THE LANDSCAPE ARCHITECT'S EXPRESS WRITTEN PERMISSION.

No.	DATE	REVISION	APPROV.



S:\315163\ENGINEERING\Construction Plans\31563-LAN.dwg 7/19/2013 10:35:17 AM

SHEET  
L-1

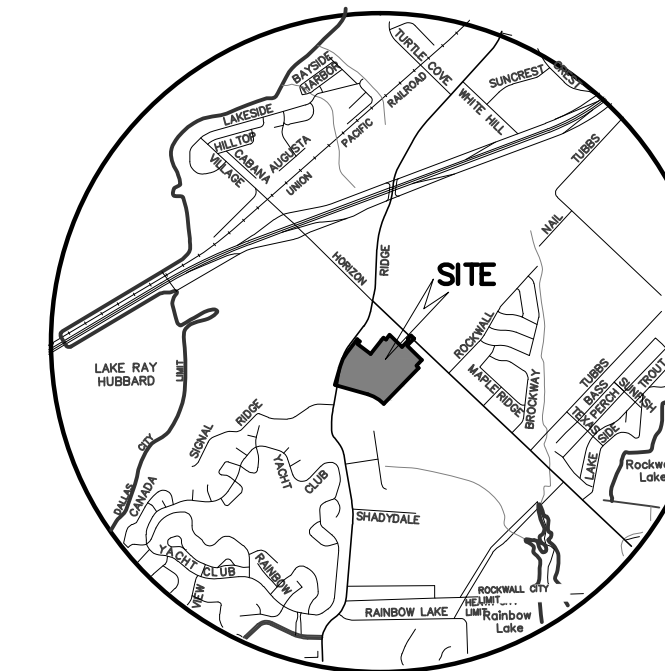
7/19/2013 10:35:27 AM

G:\315163\ENGINEERING\Construction Plans\31563-LAN.dwg

CITY OF ROCKWALL LANDSCAPE REQUIREMENTS		
LANDSCAPE BUFFER	10' LANDSCAPE BUFFER STRIP REQUIRED ALONG PERIMETER	
	REQUIRED	PROVIDED
	10'	10'
STREET LANDSCAPING	1 CANOPY TREE FOR EACH 50' OF STREET FRONTAGE	
	REQUIRED (RIDGE RD)	PROVIDED
	333'/50 = 7 TREES	10 EXISTING TREES
	REQUIRED (ARISTA RD)	PROVIDED
305'/50 = 7 TREES	8 EXISTING TREES	
PARKING LOT LANDSCAPING	5% OR 200 SF (WHICHEVER IS GREATER) IN INTERIOR LANDSCAPING	
	REQUIRED	PROVIDED
	275,634 X 5% = 13,782 SF	25,100 SF
PARKING LOT TREES	IF PARKING EXCEEDS 20,000 SF THEN 1 TREE PER 10 SPACES	
	REQUIRED	PROVIDED
	444 SPACES/10 = 45 TREES	40 EXISTING TREES 8 NEW TREES
PARKING LOT TREES	ALL PARKING SPACES SHALL BE WITHIN 80' OF A TREE	
	REQUIRED	PROVIDED
	ALL SPACES WITHIN 80'	ALL SPACES WITHIN 80'
LANDSCAPE AREA	REQUIRED 15% OF TOTAL SITE IN LANDSCAPE AREA	
	REQUIRED	PROVIDED
	416,377 X 15% = 62,456 SF	45,803 SF
LANDSCAPE AREA	50% OF REQUIRED LANDSCAPE AREA IN FRONT YARD	
	REQUIRED	PROVIDED
	62,456 X 50% = 31,228 SF	31,778 SF
DETENTION AREA REQUIRED TREES	ONE (1) TREE PER 750 SQ FT OF DETENTION AREA	
	REQUIRED	PROVIDED
	N/A	N/A

**PLANTING NOTES:**

1. PLANT SIZE, TYPE, AND CONDITION SUBJECT TO APPROVAL OF OWNER'S REPRESENTATIVE.
2. ALL PLANT MATERIAL TO BE NURSERY GROWN STOCK.
3. CONTRACTOR RESPONSIBLE FOR MAINTENANCE OF ALL PLANT MATERIAL UNTIL PROJECT ACCEPTANCE.
4. ALL CONTAINER GROWN PLANTS TO HAVE FULL, VIGOROUS ROOT SYSTEM, COMPLETELY ENCOMPASSING CONTAINER.
5. ALL PLANTS WELL ROUNDED AND FULLY BRANCHED. ALL TREES WITH SPREAD 2/3 OF HEIGHT.
6. CONTRACTOR TO PROVIDE OWNER WITH PREFERRED MAINTENANCE SCHEDULE OF ALL PLANTS AND LAWNS.
7. MAINTAIN/PROTECT VISIBILITY TRIANGLE WITH PLANT MATERIAL PER CITY STANDARDS AT ALL ENTRANCES TO SITE.
8. PREP ENTIRE WIDTH OF ALL DEFINED PLANTING BEDS WITH MIX AS OUTLINED IN SPECS. WHERE SHRUBS ARE LOCATED ALONG CURB, SET SHRUBS BACK FROM CURB 3 FT.
9. SEE DETAIL SHEET FOLLOWING FOR PLANTING DETAILS.
10. CONTRACTOR RESPONSIBLE FOR LOCATION OF ALL UTILITIES, INCLUDING BUT NOT LIMITED TO TELEPHONE, TELECABLE, ELECTRIC, GAS, WATER AND SEWER. ANY DAMAGE TO UTILITIES TO BE REPAIRED BY CONTRACTOR AT NO COST TO OWNER.
11. EXISTING TREES ARE SHOWN TO REMAIN, CONTRACTOR SHALL PRUNE ONLY ON APPROVAL OF CITY ARBORIST. WORK TO INCLUDE REMOVAL OF ALL SUCKER GROWTH; DEAD AND DISEASED BRANCHES AND LIMBS; VINES, BRIARS AND OTHER INVASIVE GROWTH; AND ALL INTERFERING BRANCHES. MAKE ALL CUTS FLUSH TO REMAINING LIMB. RETAIN NATURAL SHAPE OF PLANT. ALL WORK SUBJECT TO APPROVAL OF OWNER'S REPRESENTATIVE.
12. QUANTITIES ARE PROVIDED AS A COURTESY AND NOT INTENDED FOR BID PURPOSES. CONTRACTOR TO VERIFY PRIOR TO PRICING.
13. INSTALL EDGING BETWEEN LAWN AND PLANTING BEDS. REFER TO SPECIFICATIONS. FILE ALL CORNERS SMOOTH.
14. INSTALL CURLEX BLANKET (OR EQUAL) PER MANUFACTURERS INSTRUCTIONS ON ALL GROUNDCOVER/SHRUB BEDS WITH A SLOPE OF 4:1 OR GREATER.
15. AT TIME OF PLAN PREPARATION, SEASONAL PLANT AVAILABILITY CANNOT BE DETERMINED. IT IS THE RESPONSIBILITY OF THE CONTRACTOR TO SECURE AND RESERVE ALL B&B PLANTS WHEN AVAILABLE IN CASE ACTUAL INSTALLATION OCCURS DURING THE OFF-SEASON. PURCHASE AND HOLD B&B PLANTS FOR LATE SEASON INSTALLATION.
16. BERM ALL PARKING LOT ISLANDS AS SHOWN ON ENCLOSED DETAIL SHEET. (BERMS MAY NOT BE SHOWN ON GRADING PLAN.)

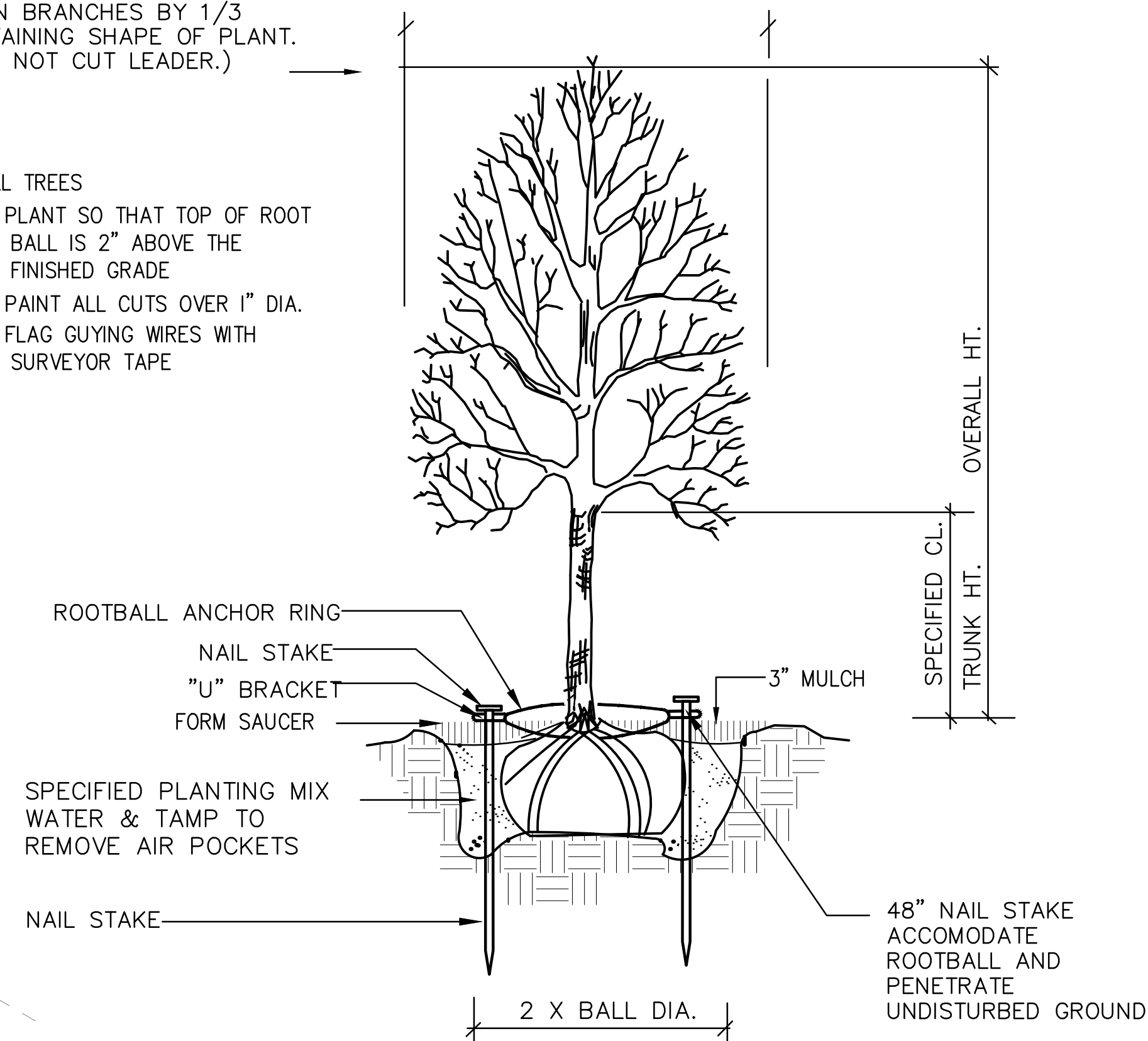


VICINITY MAP  
NOT TO SCALE

Contact Information:  
**TREE STAKE SOLUTIONS**  
www.treestakesolutions.com  
281.723.9081

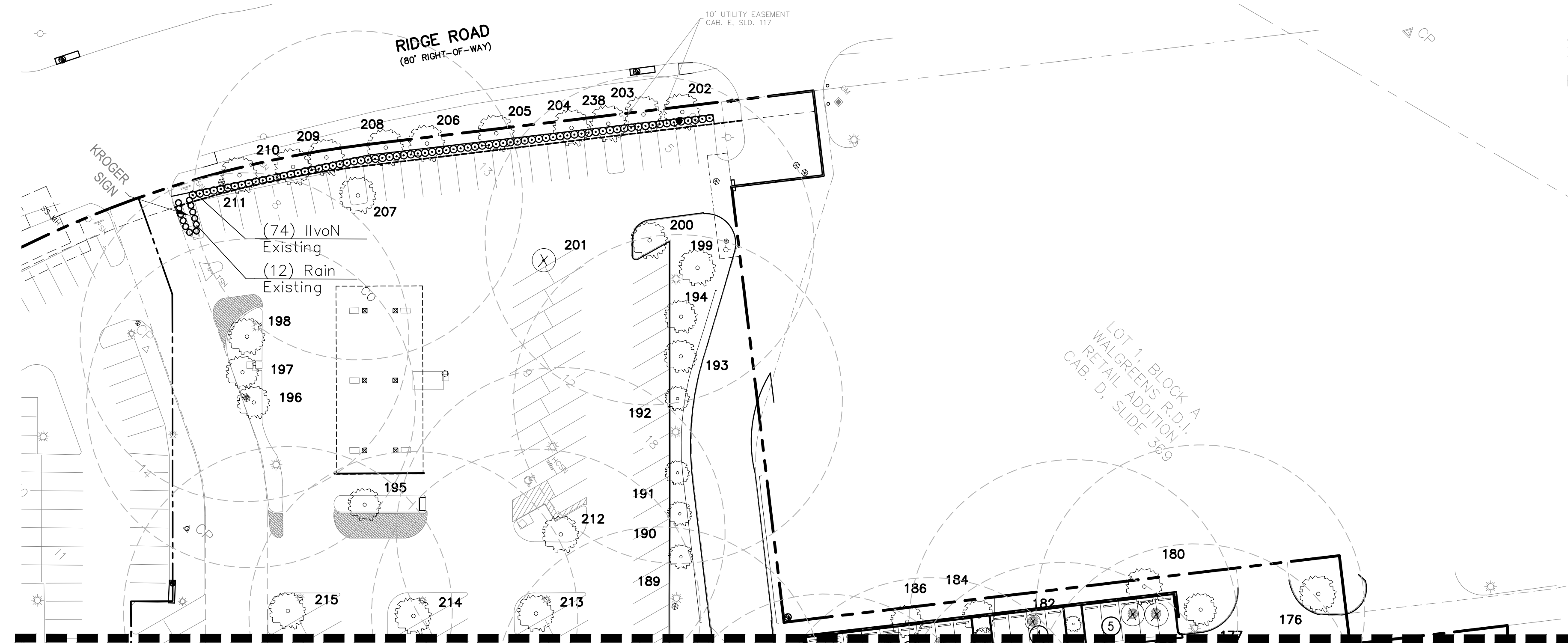
THIN BRANCHES BY 1/3  
RETAINING SHAPE OF PLANT.  
(DO NOT CUT LEADER.)

- ALL TREES
- PLANT SO THAT TOP OF ROOT BALL IS 2" ABOVE THE FINISHED GRADE
  - PAINT ALL CUTS OVER 1" DIA.
  - FLAG GUYING WIRES WITH SURVEYOR TAPE



**SAFETY STAKE BY TREE STAKE SOLUTIONS**

SCALE: NOT TO SCALE



MATCHLINE 1, SHEET L-1

**PRELIMINARY NOT FOR CONSTRUCTION SW 575**

E. NEAL SURVEY, ABSTRACT NO. 207  
CITY OF ROCKWALL  
ROCKWALL COUNTY, TEXAS  
KROGER TEXAS L.P.  
1331 E. AIRPORT FREEWAY  
IRVING, TEXAS 75062

LANDSCAPE PLAN  
HORIZON RIDGE ADDITION  
KROGER SW575 - 2935 RIDGE ROAD  
ROCKWALL, TEXAS

Scale: 1" = 40'  
Date: JULY 19, 2013  
File: 31563-LAN  
Project No.: 31563.01(20)



THIS ELECTRONIC DRAWING FILE IS RELEASED UNDER THE AUTHORITY OF JOHN R. FAIN, LANDSCAPE ARCHITECT REGISTRATION NUMBER 805 ON 07/19/13, WHO MAINTAINS THE ORIGINAL FILE. THIS ELECTRONIC DRAWING FILE MAY BE USED AS A BACKGROUND DRAWING. PURSUANT TO RULE 3.103(F) OF THE RULES AND REGULATIONS OF THE TEXAS BOARD OF ARCHITECTURAL EXAMINERS, THE USER OF THIS ELECTRONIC DRAWING FILE AGREES TO ASSUME ALL RESPONSIBILITY FOR ANY MODIFICATION TO OR USE OF THIS DRAWING FILE THAT IS INCONSISTENT WITH THE REQUIREMENTS OF THE RULES AND REGULATIONS OF THE TEXAS BOARD OF ARCHITECTURAL EXAMINERS. NO PERSON MAY MAKE MODIFICATIONS TO THIS ELECTRONIC DRAWING FILE WITHOUT THE LANDSCAPE ARCHITECT'S EXPRESS WRITTEN PERMISSION.

SHEET

L-2

**Winkelmann & Associates, Inc.**  
CONSULTING CIVIL ENGINEERS & SURVEYORS  
6750 HILLCREST PLAZA, SUITE 325  
DALLAS, TEXAS 75230  
Phone: (972) 490-1900  
Fax: (972) 490-1999  
Toll Free: 1-800-886-0000  
Copyright © 2012, Winkelmann & Associates, Inc.



G:\315163\ENGINEERING\Construction Plans\31563-LAN.dwg 7/19/2013 10:35:33 AM

### Tree Survey

Cal.	Species	Condition
101	8" CEDAR	PRESERVE
102	8" CEDAR	PRESERVE
103	8" CEDAR	REMOVE UNPROTECTED
104	8" CEDAR	PRESERVE
105	8" CEDAR	REMOVE UNPROTECTED
106	8" CEDAR	REMOVE UNPROTECTED
107	8" CEDAR	REMOVE UNPROTECTED
108	8" CEDAR	REMOVE UNPROTECTED
109	8" CEDAR	REMOVE UNPROTECTED
110	8" CEDAR	REMOVE UNPROTECTED
111	1" CEDAR	REMOVE UNPROTECTED
112	1" CEDAR	REMOVE UNPROTECTED
113	1" CEDAR	REMOVE UNPROTECTED
114	1" CEDAR	REMOVE UNPROTECTED
115	1" CEDAR	REMOVE UNPROTECTED
116	8" CEDAR	REMOVE UNPROTECTED
117	8" CEDAR	REMOVE UNPROTECTED
118	8" CEDAR	REMOVE UNPROTECTED
119	8" CEDAR	REMOVE UNPROTECTED
120	1" CEDAR	REMOVE UNPROTECTED
121	1" CEDAR	REMOVE UNPROTECTED
122	1" CEDAR	REMOVE UNPROTECTED
123	1" CEDAR	REMOVE UNPROTECTED
124	1" CEDAR	REMOVE UNPROTECTED
125	1" CEDAR	REMOVE UNPROTECTED

### Tree Survey

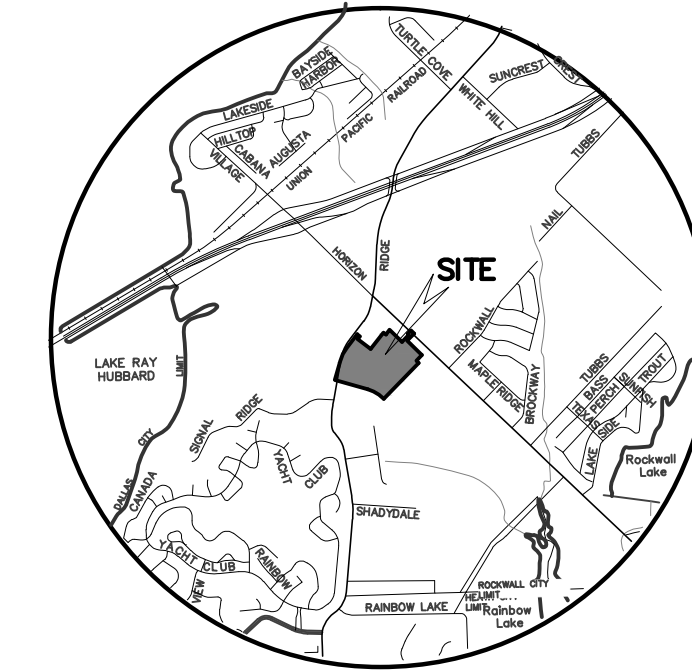
Cal.	Species	Condition
126	8" CEDAR	PRESERVE
127	8" CEDAR	REMOVE
128	1" CEDAR	PRESERVE
129	1" CEDAR	PRESERVE
130	1" CEDAR	PRESERVE
131	8" CEDAR	REMOVE
132	1" CEDAR	REMOVE UNPROTECTED
133	1" CEDAR	REMOVE UNPROTECTED
134	1" CEDAR	REMOVE UNPROTECTED
135	1" CEDAR	REMOVE UNPROTECTED
136	1" CEDAR	PRESERVE
137	1" CEDAR	PRESERVE
138	8" CEDAR	PRESERVE
139	1" CEDAR	PRESERVE
140	1" CEDAR	REMOVE UNPROTECTED
141	1" CEDAR	REMOVE UNPROTECTED
142	1" CEDAR	REMOVE UNPROTECTED
143	1" CEDAR	REMOVE UNPROTECTED
144	1" CEDAR	REMOVE UNPROTECTED
145	1" CEDAR	REMOVE UNPROTECTED
146	1" CEDAR	REMOVE UNPROTECTED
147	1" CEDAR	REMOVE UNPROTECTED
148	8" CEDAR	PRESERVE
149	8" CEDAR	REMOVE
150	8" CEDAR	REMOVE

### Tree Survey

Cal.	Species	Condition
151	8" CEDAR	REMOVE
152	1" CEDAR	REMOVE UNPROTECTED
153	1" CEDAR	REMOVE UNPROTECTED
154	1" CEDAR	REMOVE UNPROTECTED
155	1" CEDAR	REMOVE UNPROTECTED
156	1" CEDAR	REMOVE UNPROTECTED
157	1" CEDAR	REMOVE UNPROTECTED
158	1" CEDAR	REMOVE UNPROTECTED
159	1" CEDAR	REMOVE UNPROTECTED
160	10" CEDAR	REMOVE
161	8" CEDAR	REMOVE
162	7" CEDAR	REMOVE
163	8" CEDAR	PRESERVE
164	10" CEDAR	PRESERVE
165	8" CEDAR	PRESERVE
166	2" CEDAR	PRESERVE
167	2" CEDAR	PRESERVE
168	8" CRAPE MYRTLE	PRESERVE
169	7" BALD CYPRESS	PRESERVE
170	7" BALD CYPRESS	PRESERVE
171	5" BALD CYPRESS	PRESERVE
172	7" BALD CYPRESS	PRESERVE
173	3" BALD CYPRESS	PRESERVE
174	4" BALD CYPRESS	PRESERVE
175	7" BALD CYPRESS	PRESERVE

### Tree Survey

Cal.	Species	Condition
176	6" BALD CYPRESS	PRESERVE
177	3" BALD CYPRESS	PRESERVE
178	6" CRAPE MYRTLE	REMOVE
179	6" CRAPE MYRTLE	REMOVE
180	3" BALD CYPRESS	PRESERVE
181	6" BALD CYPRESS	PRESERVE
182	6" CRAPE MYRTLE	REMOVE
183	4" CRAPE MYRTLE	PRESERVE
184	4" BALD CYPRESS	PRESERVE
185	4" CRAPE MYRTLE	REMOVE
186	5" BALD CYPRESS	PRESERVE
187	3" CRAPE MYRTLE	REMOVE UNPROTECTED
188	4" CRAPE MYRTLE	REMOVE
189	3" BALD CYPRESS	PRESERVE
190	3" BALD CYPRESS	PRESERVE
191	3" BALD CYPRESS	PRESERVE
192	3" BALD CYPRESS	PRESERVE
193	3" BALD CYPRESS	PRESERVE
194	3" BALD CYPRESS	PRESERVE
195	2" BALD CYPRESS	PRESERVE
196	2" BALD CYPRESS	PRESERVE
197	2" BALD CYPRESS	PRESERVE
198	2" BALD CYPRESS	PRESERVE
199	3" BALD CYPRESS	PRESERVE
200	3" BALD CYPRESS	PRESERVE



VICINITY MAP  
NOT TO SCALE

No.	DATE	REVISION	APPROV.

**Winkelmann & Associates, Inc.**  
CONSULTING CIVIL ENGINEERS • SURVEYORS  
8750 HILLCREST PLAZA, SUITE 325  
DALLAS, TEXAS 75245  
Phone: (972) 490-1900  
Fax: (972) 490-1999  
Texas Survey Registration No. 100886-00  
Copyright © 2012, Winkelmann & Associates, Inc.

E. NEAL SURVEY, ABSTRACT NO. 207  
CITY OF ROCKWALL  
ROCKWALL COUNTY, TEXAS  
KROGER TEXAS L.P.  
1331 E. AIRPORT FREEWAY  
IRVING, TEXAS 75062

### Tree Survey

Cal.	Species	Condition
201	3" BALD CYPRESS	REMOVE UNPROTECTED
202	4" LIVE OAK	PRESERVE
203	4" LIVE OAK	PRESERVE
204	4" BALD CYPRESS	PRESERVE
205	4" BALD CYPRESS	PRESERVE
206	5" LIVE OAK	PRESERVE
207	10" BALD CYPRESS	PRESERVE
208	3" LIVE OAK	PRESERVE
209	6" BALD CYPRESS	PRESERVE
210	3" LIVE OAK	PRESERVE
211	4" LIVE OAK	PRESERVE
212	8" BALD CYPRESS	PRESERVE
213	6" BALD CYPRESS	PRESERVE
214	6" BALD CYPRESS	PRESERVE
215	8" BALD CYPRESS	PRESERVE
216	8" BALD CYPRESS	PRESERVE
217	6" BALD CYPRESS	PRESERVE
218	8" BALD CYPRESS	PRESERVE
219	6" BALD CYPRESS	PRESERVE
220	8" BALD CYPRESS	PRESERVE
221	6" BALD CYPRESS	PRESERVE
222	5" BALD CYPRESS	PRESERVE
223	6" WAX MYRTLE	PRESERVE
224	4" WAX MYRTLE	PRESERVE
225	4" WAX MYRTLE	PRESERVE

### Tree Survey

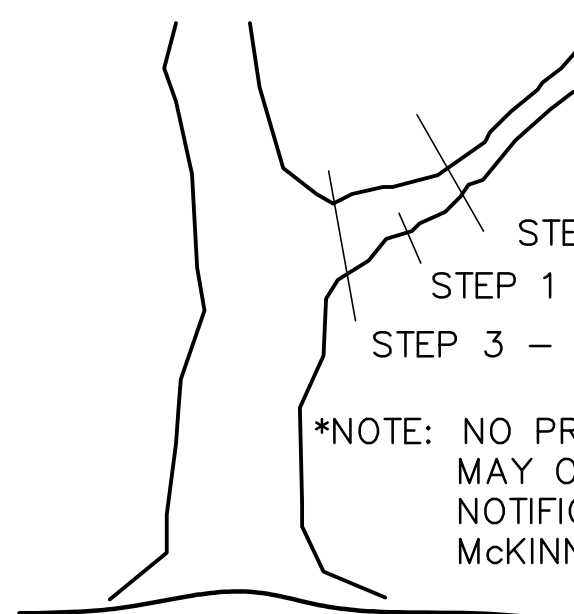
Cal.	Species	Condition
226	6" CEDAR ELM	PRESERVE
227	6" CEDAR ELM	PRESERVE
228	5" CEDAR ELM	PRESERVE
229	5" CEDAR ELM	PRESERVE
230	8" CRAPE MYRTLE	PRESERVE
231	8" CRAPE MYRTLE	PRESERVE
232	8" CRAPE MYRTLE	PRESERVE
233	4" CEDAR ELM	PRESERVE
234	6" LEYLAND CYPRESS	PRESERVE
235	6" LEYLAND CYPRESS	PRESERVE
236	6" LEYLAND CYPRESS	PRESERVE
237	6" LEYLAND CYPRESS	PRESERVE
238	3" LIVE OAK	PRESERVE
239		
240		
241		
242		
243		
244		
245		
246		
247		
248		
249		
250		

#### TREE MITIGATION NOTES:

1. CRAPE MYRTLE TREES TO REMOVE (26" TOTAL).
2. 100% REQUIRED MITIGATION ON CRAPE MYRTLES.
3. 26" X 100% = 26" REQUIRED MITIGATION.
4. 7 X 4" NEW TREES = 28" ADDED

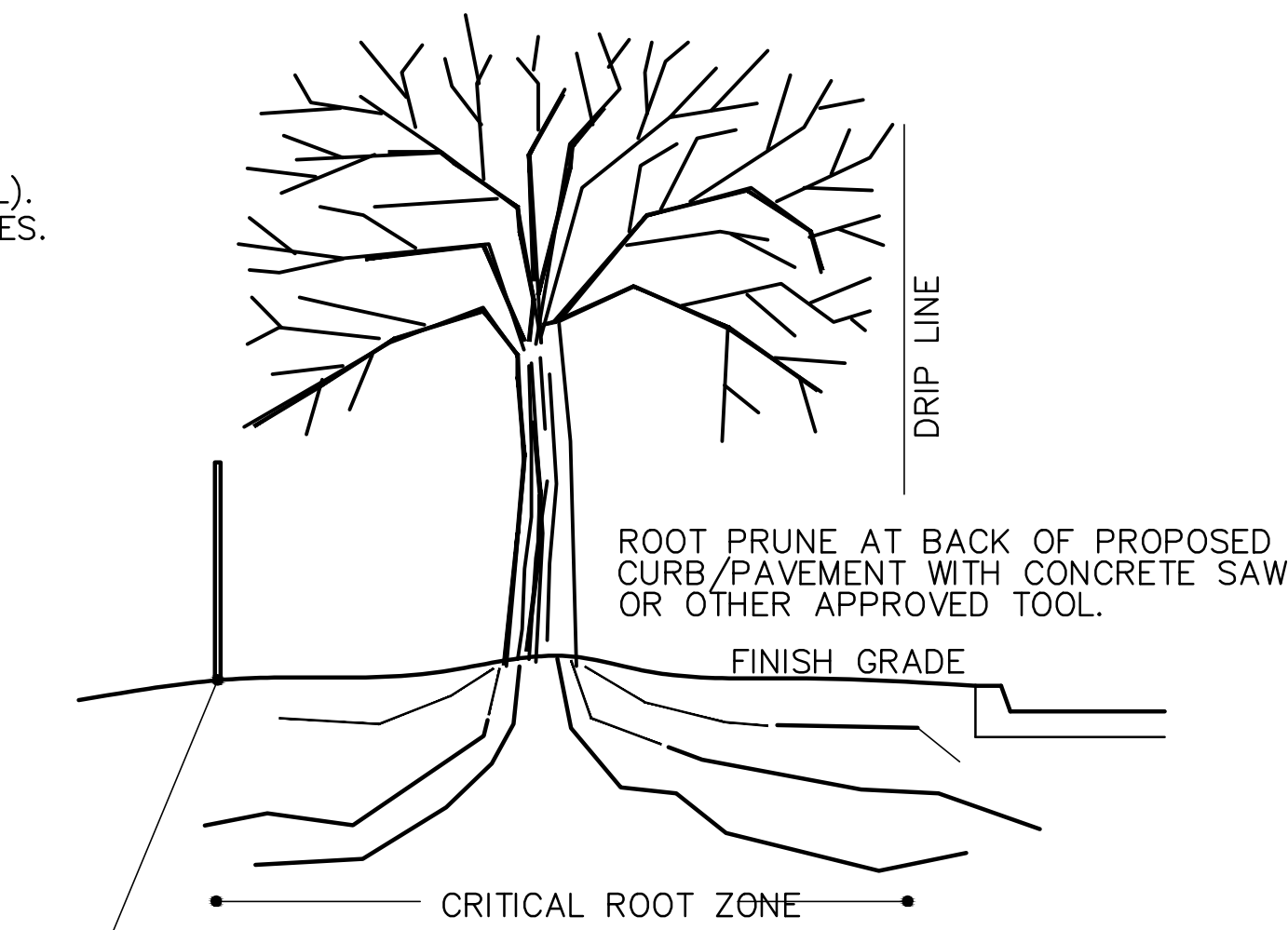
REF SHEET L-1 FOR PLAN  
REF SHEET L-2 FOR PLANT LEGEND

#### LEGEND



#### TREE PRUNING

SCALE: NONE



INSTALL 6 FT ORANGE VINYL PROTECTIVE FENCE AT DRIP LINE - ALL PROTECTED TREES.  
DO NOT PARK OR DRIVE VEHICLES OR CONSTRUCTION EQUIPMENT BENEATH DRIP LINE.

DO NOT MODIFY GRADE BENEATH DRIP LINE UNLESS APPROVED BY CITY ARBORIST.  
DO NOT WASH OUT CONCRETE TRUCKS OR STORE ANY CONSTRUCTION MATERIALS BENEATH DRIP LINE.

#### TREE PROTECTION FENCING/PRUNING

SCALE: NONE

**DFL Group, LLC**  
PARKS + OPEN SPACE PLANNING • LANDSCAPE ARCHITECTURE  
82338 MD CITIES BLVD, NORTH RICHLAND HILLS, TX 76180 817-479-0700



### PRELIMINARY NOT FOR CONSTRUCTION SW 575

LANDSCAPE PLAN  
HORIZON RIDGE ADDITION  
KROGER SW575 - 2935 RIDGE ROAD  
ROCKWALL, TEXAS

Scale: N/A  
Date: JULY 19, 2013  
File: 31563-LAN  
Project No.: 31563.01(20)

SHEET

L-3

THIS ELECTRONIC DRAWING FILE IS RELEASED UNDER THE AUTHORITY OF JOHN R. FAIN, LANDSCAPE ARCHITECT REGISTRATION NUMBER 805 ON 07/19/13, WHO MAINTAINS THE ORIGINAL FILE. THIS ELECTRONIC DRAWING FILE MAY BE USED AS A BACKGROUND DRAWING PURSUANT TO RULE 3103(F) OF THE RULES AND REGULATIONS OF THE TEXAS BOARD OF ARCHITECTURAL EXAMINERS. THE USER OF THIS ELECTRONIC DRAWING FILE AGREES TO ASSUME ALL RESPONSIBILITY FOR ANY MODIFICATION TO OR USE OF THIS DRAWING FILE THAT IS INCONSISTENT WITH THE REQUIREMENTS OF THE RULES AND REGULATIONS OF THE TEXAS BOARD OF ARCHITECTURAL EXAMINERS. NO PERSON MAY MAKE MODIFICATIONS TO THIS ELECTRONIC DRAWING FILE WITHOUT THE LANDSCAPE ARCHITECT'S EXPRESS WRITTEN PERMISSION.