

**IN-N-OUT BURGER**  
LOT 4  
1.293 ACRES

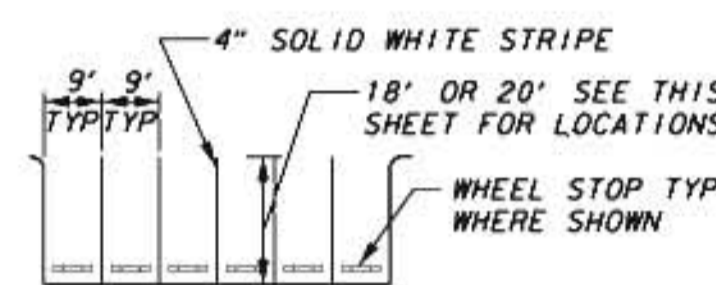
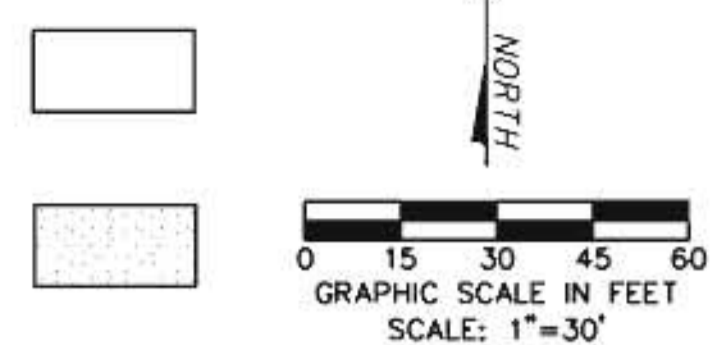
LOT 9  
1.228 ACRES  
**MIDSOUTH BANK**  
(UNDER CONSTRUCTION)

**COSTCO GASOLINE**  
LOT 1  
20.290 ACRES

**FUTURE**  
BLOCK 1  
LOT 12  
2.664 ACRES

**STANDARD DUTY PAVEMENT**  
6" 3600 PSI CONCRETE P.V.M.T. W/ #3 BARS @ 18" O.C.E.W. ON 6" COMPACTED SUBGRADE TO 95% AT OR ABOVE OPTIMUM MOISTURE CONTENT. (ASTM D 698)

**SIDEWALK & FLATWORK:**  
4" REINFORCED CONCRETE SIDEWALK FLATWORK (3000 PSI AT 28 DAYS) W/ #3 BARS @ 18" O.C.E.W. ON 6" COMPACTED SUBGRADE TO 95% AT OR ABOVE OPTIMUM MOISTURE CONTENT. (ASTM D 698)



**TYPICAL AUTO PARKING DETAIL**



**VICINITY MAP**  
NOT TO SCALE  
MAPSCO GRID 20C-2 & 30C-D

**PARKING SUMMARY**

	REOD	PROV
HANDICAP	5	6
AUTO	118	136
<b>TOTAL</b>	<b>123</b>	<b>142</b>

**SITE DATA**

CURRENT ZONING	C
PROPOSED LAND USE	COMMERCIAL
GROSS AREA	2,230 ACRES
NO. OF LOTS	1
FRONT YARD SETBACK	15 FT
REAR YARD SETBACK	10 FT
SIDE YARD SETBACK	10 FT
MAXIMUM BUILDING HEIGHT	240 FT HEIGHT

NO.	REVISION	BY	DATE

**icon** Consulting Engineers, Inc. 250 W. Southlake Blvd., Suite 117  
Civil Engineers - Designers - Planners Southlake, Tx 76092 (817) 552-6210  
Engineering Firm Registration Number F-9007

**Luby's Fuddrucker's Restaurants, LLC**  
ROCKWALL CENTRE CORNERS ADDITION  
S GOLIAD STREET (SH 205) - LOT 11, BLOCK 1

**SITE PLAN**

DESIGN	DRAWN	DATE	SCALE	NOTES	Sheet No.
ICE	ICE	AUG 5, 2013	1"=30'		C2.01

CASE NO.

N 12°39'25" E  
82.44'

S 89°03'17" E

409.16'

S 00°56'43" W  
109.06'

N 29°58'48" W  
294.79'

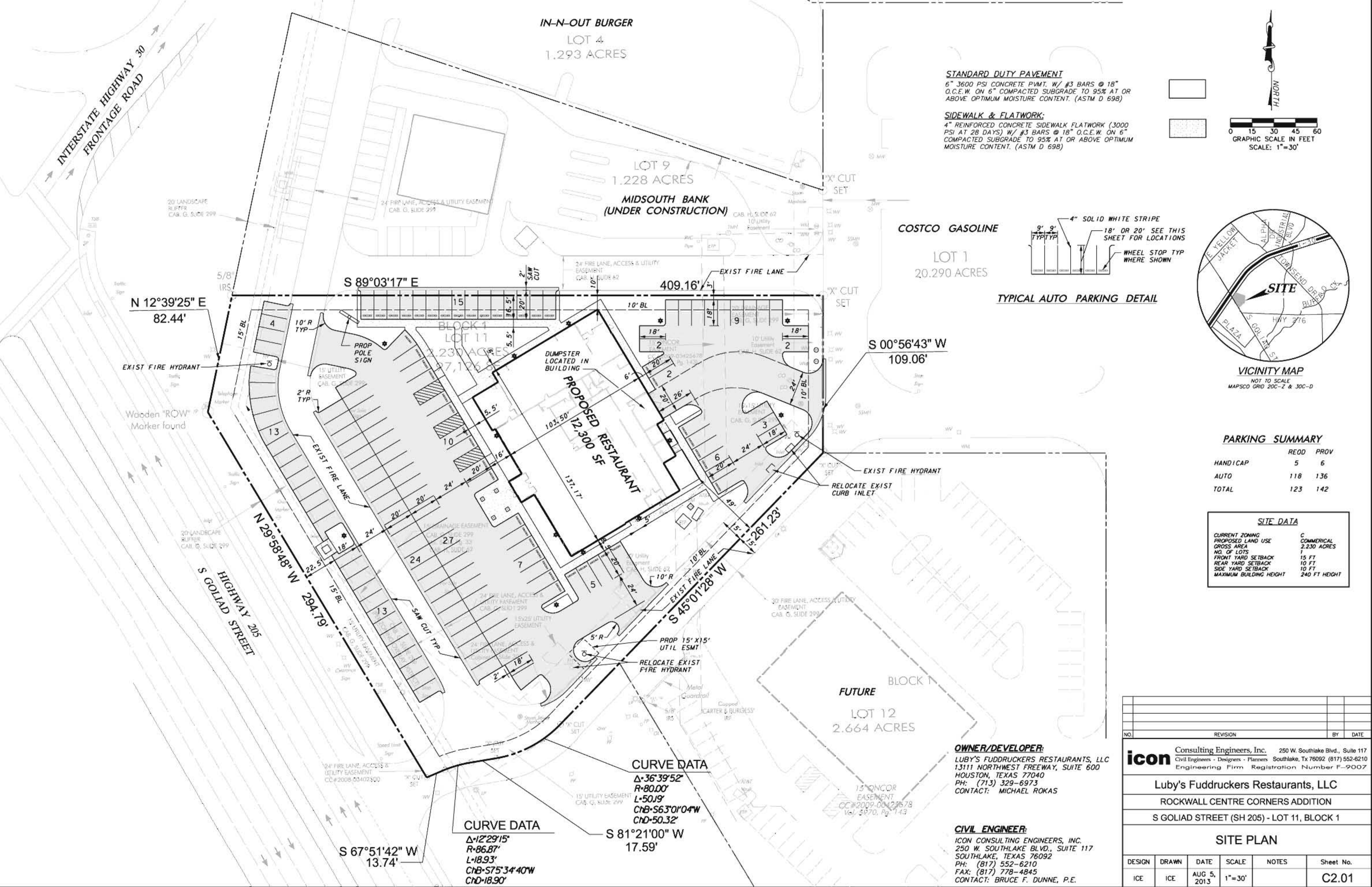
S 45°01'28" W

S 67°51'42" W  
13.74'

**CURVE DATA**  
Δ=36°39'52"  
R=80.00'  
L=50.19'  
ChB=S63°01'04"W  
ChD=50.32'

**CURVE DATA**  
Δ=12°29'15"  
R=86.87'  
L=18.93'  
ChB=S75°34'40"W  
ChD=18.90'

S 81°21'00" W  
17.59'



LUBY'S - ROCKWALL CORNERS - PROJECT NO. 5075-02



THESE DOCUMENTS ARE FOR INTERIM REVIEW AND NOT FOR CONSTRUCTION, BIDDING OR PERMIT PURPOSES.

RESPONSIBLE ARCHITECT  
JOHN RICHARD THORESEN  
12590  
8/05/13



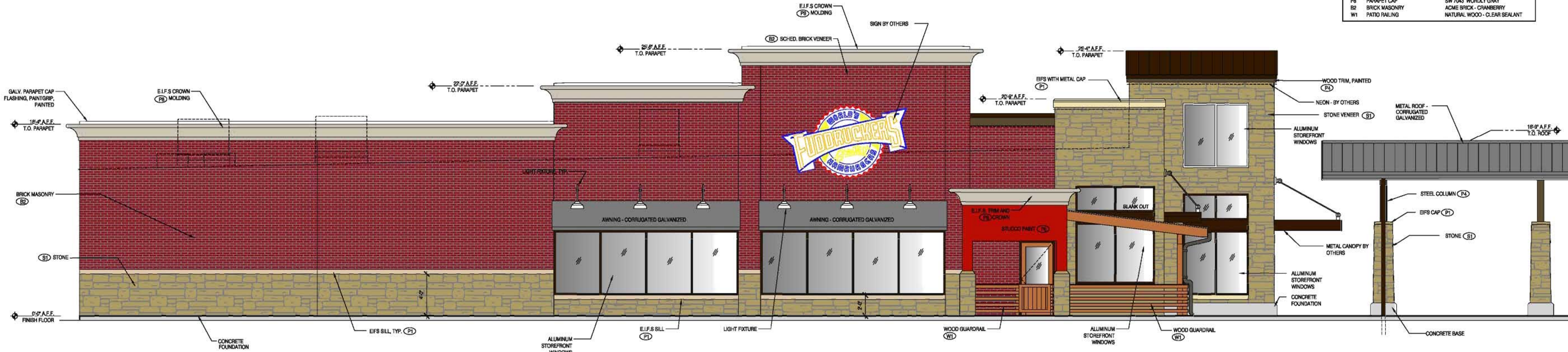
**01 EAST EXTERIOR ELEVATION**  
SCALE: 1/4" = 1'-0"

TOTAL FACADE SQ. FT. 1878

% MASONRY (BRICK, STONE, STUCCO & HARDI)	91
% NATURAL STONE	20
% SECONDARY MATERIALS (EIFS)	9

**EXTERIOR FINISH SCHEDULE:**

LUBYS	
P1 MAIN FIELD COLOR	SW 7890 ROW HOUSE TAN
P2 E.I.F.S. BAND	SW 6127 IVORY
P3 E.I.F.S. BAND	SW6180 OAK MOSS
P4 WOOD TRIM / HARDI	SW 7027 WELL-BRED BROWN
B1 NATURAL STONE	ALTIMA BLEND
B1 BRICK MASONRY	ACME BRICK - DOESKIN
FLUOROLUCKERS	
P6 MAIN FIELD COLOR	SW 6866 HEARTH-ROB
P7 PAINT	SW 7046 URBANE BRONZE
P8 PARAPET CAP	SW 7040 WOOLLY GRAY
B2 BRICK MASONRY	ACME BRICK - CRANBERRY
W1 PATIO RAILING	NATURAL WOOD - CLEAR SEALANT



**02 NORTH EXTERIOR ELEVATION**  
SCALE: 1/4" = 1'-0"

TOTAL FACADE SQ. FT. 1878

% MASONRY (BRICK, STONE, STUCCO & HARDI)	91
% NATURAL STONE	29
% SECONDARY MATERIALS (EIFS)	9

**Luby's**  
ROCKWALL, TX

PROJECT TITLE  
F8W81210  
JACOBS PROJECT NUMBER  
S. GOLIAD ST. (SH 205) & IH 30 FRONTAGE RD.  
ROCKWALL, TX  
PROJECT LOCATION

EXTERIOR ELEVATIONS  
SHEET TITLE  
**A2.02**  
SHEET NUMBER

PLOTED: Aug 05, 2013 12:17pm B:\p\mms Locations\proj\ext\01\luby\01\ext\02.dwg  
 Location: \proj\ext\01\luby\01\ext\02.dwg  
 User: jacobson



THESE DOCUMENTS ARE FOR INTERIM REVIEW AND NOT FOR CONSTRUCTION, BIDDING OR PERMIT PURPOSES.  
RESPONSIBLE ARCHITECT  
JOHN RICHARD THORESEN  
12590  
8/05/13



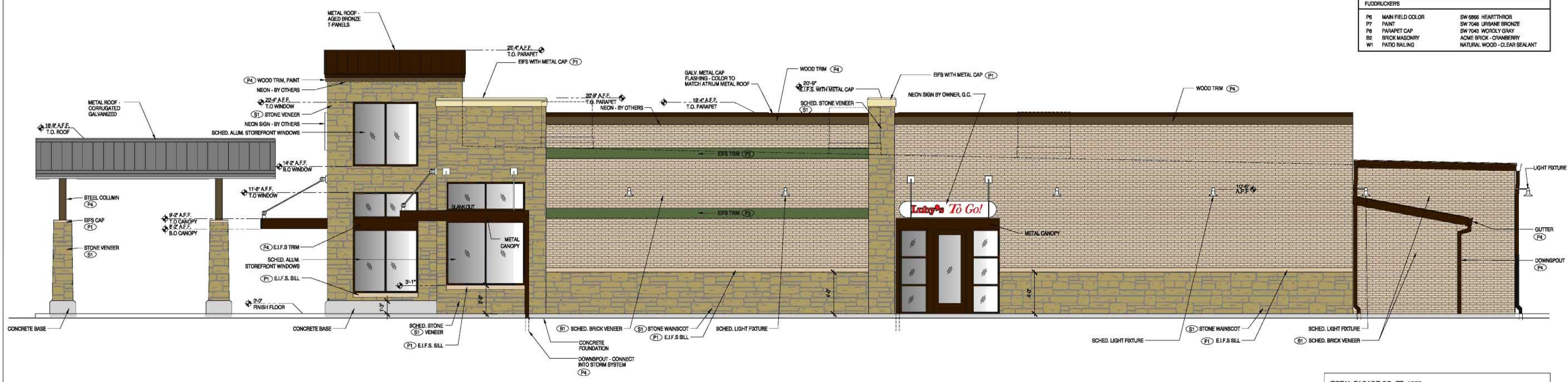
TOTAL FACADE SQ. FT. 1878

% MASONRY (BRICK, STONE, STUCCO & HARDI)	90
% NATURAL STONE	39
% SECONDARY MATERIALS (EIFS)	10

01 WEST EXTERIOR ELEVATION  
SCALE: 1/4" = 1'-0"

EXTERIOR FINISH SCHEDULE:

LUBYS		
P1 MAIN FIELD COLOR	SW 7689 ROW HOUSE TAN	
P2 EIFS BAND	SW 6127 IVORY	
P3 EIFS BAND	SW6180 OAK MOSS	
P4 WOOD TRIM / HARDI	SW 7627 WELL-BRED BROWN	
S1 NATURAL STONE	AUTUMN BLEND	
B1 BRICK MASONRY	ACME BRICK - DOESKIN	
FUDDRUCKERS		
P6 MAIN FIELD COLOR	SW 6866 HEARTHROB	
P7 PAINT	SW 7046 URBAN BRONZE	
P8 PARAPET CAP	SW 7043 WOOLLY GRAY	
B2 BRICK MASONRY	ACME BRICK - CRANBERRY	
W1 PATIO RAILING	NATURAL WOOD - CLEAR SEALANT	



TOTAL FACADE SQ. FT. 1983

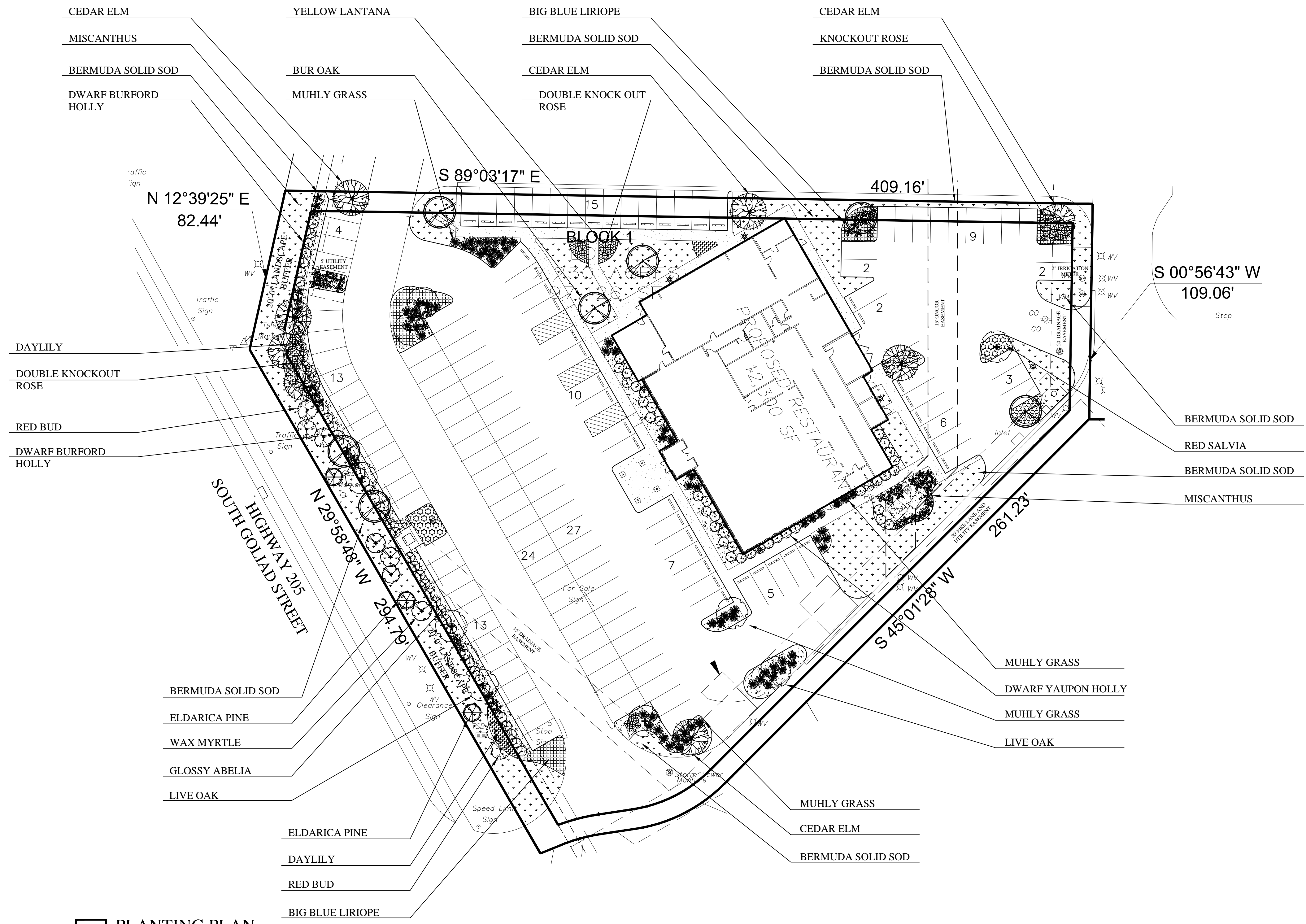
% MASONRY (BRICK, STONE, STUCCO & HARDI)	95
% NATURAL STONE	32
% SECONDARY MATERIALS (EIFS)	5

02 SOUTH EXTERIOR ELEVATION  
SCALE: 1/4" = 1'-0"

PROJECT TITLE  
FBWS1210  
JACOBS PROJECT NUMBER  
S. GOLIAD ST. (SH 205) & IH 30 FRONTAGE RD.  
ROCKWALL, TX  
PROJECT LOCATION

PLOTTED: Aug 05, 2013 12:10pm BY: jrm Location: \\projects\lucy\lucy\fbws1210\Rockwall\01\West\A2.01.dwg





**LANDSCAPE PLAN SITE DATA:**

SH 205 OVERLAY FRONTAGE 3 TREES & 4 ACCENT TREES PER 100 L.F. OF FRONTAGE FRONTAGE 294.79 = 9 TREES & 12 ACCENTS TREES	REQUIRED: 9 TREES (4" CAL.) 12 (ACCENT 4" HT)	REQUIRED: 9 TREES (4" CAL.) 12 (ACCENT 4" HT)
EVERY PARKING SPOT IS WITHIN 80' L.F. OF A TREE 1 TREE PER 10 PARKING SPACES 147 SPACES = 15 TREES	15 TREES	15 TREES
15% OF SITE TO BE LANDSCAPED SITE 2.23 ACRES	14,571 S.F.	18,572 S.F. OR 19%

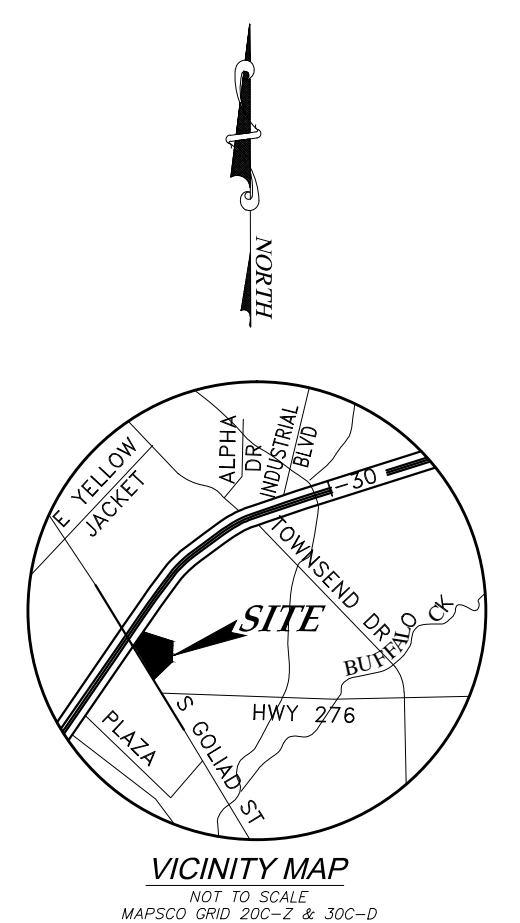
A IRRIGATION SYSTEM WITH RAIN AND FREEZE SENSOR WILL BE PROVIDED.

NO TREES WITHIN 5' OF PUBLIC UTILITIES

**1** PLANTING PLAN  
SCALE: 1"=30'-0"

SYM.	COMMON / BOTANICAL NAME	QTY.	SIZE	SPACING	CONDITION / REMARKS
	CEDAR ELM ULMUS CRASSIFOLIA	8	4" CAL.		CONTAINER GROWN, MATCHING, 12' HEIGHT SINGLE TRUNKED, FULL, 6' SPREAD
	LIVE OAK QUERCUS VIRGINIANA	10	4" CAL.		CONTAINER GROWN OR B&B, FULL, MATCHING, SINGLE TRUNKED, FULL, 6' SPREAD
	BUR OAK QUERCUS MACRO CARPA	7	4" CAL.		CONTAINER GROWN OR B&B, MATCHING, 12' HIEGHT SINGLE TRUNKED, FULL, 6' SPREAD
	RED BUD CERCIS CANADENSIS	5	4" HT.		CONTAINER GROWN, MATCHING, 4' HEIGHT SINGLE TRUNKED, FULL, 4' SPREAD
	WAX MYRTLE MYRICA CERIFERA	4	4" HT.		CONTAINER GROWN, MATCHING, 4' HEIGHT MULTI TRUNKED, FULL, 4' SPREAD
	ELDARICA PINE PINUS SPP.	3	4" HT.		CONTAINER GROWN OR B&B, FULL, MATCHING, SINGLE TRUNKED

SYM.	COMMON / BOTANICAL NAME	QTY.	SIZE	SPACING	CONDITION / REMARKS
	MULCH	7,500	S.F.		3" DEPTH WEED BARRIER TO BE INSTALLED UNDERNEATHE GRANITE
	GLOSSY ABELIA ABELIA GRANDIFLORA 'PROSTRATA'	19	#3	36" O.C.	PLANT TO BE WELL ROOTED, FULL, MATCHING 18" X 24"
	STEEL EDGE	590	L.F.		3" DEPTH
	BERMUDA SOLID SOD CYNODON DACTYLON	11,150	S.F.		SEE MAN. SPEC.
	BED PREP' COMPOST	7,500	S.F.		TILL 3" DEPTH
	DWARF YAUPON HOLLY ILEX VOMITORIA 'NANA'	38	#3	36" O.C.	PLANT TO BE WELL ROOTED, FULL, MATCHING 18" X 24"
	MUHLIY GRASS MUHLENBERGIA LINDHEIMERI	71	#3	36" O.C.	PLANT TO BE WELL ROOTED, FULL, MATCHING 18" X 24"
	MISCANTHUS	57	#5	36" O.C.	PLANT TO BE WELL ROOTED, FULL, MATCHING 18" X 24"
	BIG BLUE LIRIOPE LIRIOPE MUSCARI 'BIG BLUE'	750	#1	12" O.C.	FULL POTS, NOT ROOT BOUND
	DAYLILY "ORANGE" HEMEROCALLIS SPP.	250	#1	12" O.C.	FULL POTS, NOT ROOT BOUND,
	YELLOW LANTANA LANTANA SPP.	75	#1	12" O.C.	FULL POTS, AT LEAST 3 RUNNERS PER POT RUNNERS MUST BE 8" IN LENGTH
	DOUBLE KNOCK OUT ROSE ROSA SP. "RED"	37	#3	36" O.C.	PLANT TO BE WELL ROOTED, FULL, MATCHING 18" X 24"
	DWARF BURFOD HOLLY ILEX CORNUTA "BURFORDII NANA"	27	#3	36" O.C.	PLANT TO BE WELL ROOTED, FUL, MATCHED 18" X 24"
	RED SALVIA SALVIA GREGGI	300	#1	24" O.C.	FULL POTS, NOT ROOT BOUND



1	CITY COMMENTS	RGB	7-30-13
NO.	REVISION	BY	DATE
		302 Brookside Drive Cypressville, Texas 74001 Office: (936) 246-1652	
<b>Luby's Fuddruckers Restaurants, LLC</b> <b>LUBY'S - ROCKWALL CORNERS</b>			
<b>LANDSCAPE PLAN</b>			
DESIGN	DRAWN	DATE	SCALE
RGB	RGB	7-17-13 2013	1"=30'
NOTES	Sheet No.		
-----	<b>L1.01</b>		

LUBY'S - ROCKWALL CORNERS - PROJECT NO. 5075-02



N 12°39'25" E  
82.44'

S 89°03'17" E

409.16'

S 00°56'43" W  
109.06'

Wooden "ROW" Marker found

**Front Parking Area**  
Illuminance (Fc)  
Average = 1.52  
Maximum = 5.40  
Minimum = 0.40  
Avg/Min Ratio = 3.80  
Max/Min Ratio = 13.50  
No. Points = 312

HIGHWAY 205  
S GOLIAD STREET

PROPOSED RESTAURANT  
12,200 SF

14 SPACES

Capped "CARTER & BURGESS" IRF

FUTURE



Applications Department  
1611 Clovis Barker Rd.  
San Marcos, TX 78666  
Phone: 512-753-1000  
Email: Gardcoapplications@philips.com

Project: Luby's - Rockwall, TX	Project #999-2083
Specifier: Michael Rokas - Luby's Foodtrucks Restaurants	
Agent: Frank Jewett - Philips National Accounts	
Calculations By: Richard Johnstone - Philips Lighting	
Date: July 19, 2013	
Scale: 1:1	
Lumen values are based on tests performed in compliance with IESNA LM-79.	
Pt. x pt. values shown are horizontal illuminance at grade (single-plane), in footcandles.	
The DRS LLF is based on the mean lumens of L70 or 70% depreciation of initial output.	
Field performance will depend on ambient temperature, electrical, and site characteristics.	
Luminaire height shown is approximate overall mounting height above finished grade. (UNAD)	

Symbol	Qty	Label	Description	Arrangement	Luminaire/Lamp	Lum. Lumens	LLF	Fixture
BA	4	BA	Emco ECA18-2QH-250PSMH @ 27.5'	BACK-BACK	22000	18398	0.750	ECA18-QH-260P lum
SB	2	SB	Emco ECA18-1SH-250PSMH @ 27.5'	SINGLE	22000	16673	0.750	ECA18-1H-260P lum
WA	2	WA	Stanco LP32 @ 12'	SINGLE	N.A.	5801	0.850	LP32 lum

Label	Avg	Max	Min	Avg/Min	Max/Min	# Pts	Units
Front Parking Area	1.52	5.40	0.40	3.80	13.50	312	Fc





# PHILIPS

Applications Department  
 1611 Clovis Barker Rd.  
 San Marcos, TX 78666  
 Phone: 512-753-1000  
 Email: Gardco.applications@philips.com

Project: Luby's - Rockwall, TX	Project #999-2083
Specifier: Michael Rokas - Luby's Fuddrucker's Restaurants	
Agent: Frank Jewett - Philips National Accounts	
Calculations By: Richard Johnstone - Philips Lighting	
Date: July 19, 2013	
Scale: 1 : 1	
Lumen values are based on tests performed in compliance with IESNA LM-79.	
Pt. x pt. values shown are horizontal illuminance at grade (single-plane), in footcandles.	
The 0.85 LLF is based on the mean lumens of L70 or 70% depreciation of initial output.	
Field performance will depend on ambient temperature, electrical, and site characteristics.	
Luminaire height shown is approximate overall mounting height above finished grade. (U.N.D.)	

Luminaire Schedule								
Project: Luby's - Rockwall, TX								
Symbol	Qty	Label	Description	Arrangement	Lumens/Lamp	Lum. Lumens	LLF	Filename
	4	SA	Emco ECA18-2-QH-250PSMH @ 27.5'	BACK-BACK	22000	16386	0.750	ECA18-QH-250P.ies
	2	SB	Emco ECA18-1-3H-250PSMH @ 27.5'	SINGLE	22000	16573	0.750	ECA18-3H-250P.ies
	2	WA	Stonco LP32 @ 12'	SINGLE	N.A.	5891	0.850	LP32.ies

Calculation Summary							
Project: Luby's - Rockwall, TX							
Label	Avg	Max	Min	Avg/Min	Max/Min	# Pts	Units
Front Parking Area	1.52	5.40	0.40	3.80	13.50	312	Fc

Job: Luby's - Rockwall TX

Type:

Notes:

**Emco** Featuring CosmoPolis and MasterColor Elite Electronic HID Systems

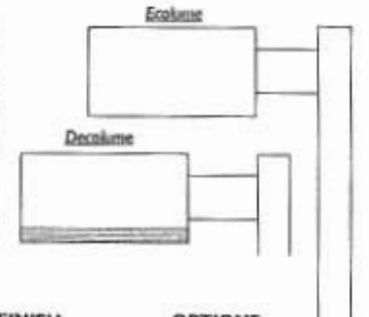
# Ecolume and Decolume

Page 1 of 3

## Arm Mount and Wall Mount

Ecolume and Decolume are rectilinear arm-mounted area luminaires, also suitable for wall mounting. The precision segmented optical systems provide required light levels, even illumination, wide pole spacings and glare control. The housing is dieformed and the door frame is extruded aluminum. The luminaire is completely sealed and gasketed, preventing intrusion from moisture, insects and contaminants. Decolume luminaires feature three (3) decorative ribs along the lower portion of the housing. The ribs are permanent design elements, an integral part of the dieformed housing. Decolume luminaires may be specified with factory applied color accents which nest in the twin reveals at the lower end of the housing.

Flat glass lens luminaires provide full cutoff performance. Sag lens Luminaires using 3V/QV optics set to lower socket position or Mallmaster optics provide semi-cutoff performance. Other sag lens luminaires provide cutoff performance.



PREFIX	MOUNTING	DISTRIBUTION	WATTAGE	VOLTAGE	FINISH	OPTIONS
ECA18	2	FH	250PSMH	QUAD	BRP	

Enter the order code into the appropriate box above. Note: Gardco reserves the right to refuse a configuration. Not all combinations and configurations are valid. Refer to notes below for exclusions and limitations. For questions or concerns, please consult the factory.

### PREFIX

	Ecolume	Decolume	
Arm Mount to Pole*	ECA14	DECA14	14" Square Luminaire
	ECA18	DECA18	18" Square Luminaire
	ECA23	DECA23	23" Square Luminaire
Direct Wall Mount	ECW14	DECW14	14" Square Luminaire
	ECW18	DECW18	18" Square Luminaire
	ECW23	DECW23	23" Square Luminaire
Wall Mount with Arm	ECWA14	DECWA14	14" Square Luminaire
	ECWA18	DECWA18	18" Square Luminaire
	ECWA23	DECWA23	23" Square Luminaire

\*Arm mounting on round poles is designed to mount to poles measuring 3.5" OD or larger only.

### MOUNTING

- 1 Single Pole Mount
- 2 Twin Pole Mount at 180°
- 2@90° Twin Pole Mount at 90°
- 3 3-way Pole Mount at 90°
- 3@120° 3-way Pole Mount at 120°
- 4 4-way Pole Mount

Use "1" for wall mounted units.

### DISTRIBUTION

#### Horizontal Lamp

- 2H Type II
- 3H Type III
- FH Type IV Forward Throw
- BLC Backlight Control (18" only, 400MH/PSMH requires 8T28/E28 lamp.)
- QH Type V

#### Vertical Lamp

- 3V<sup>1,2</sup> Type III Vertical Lamp
  - FV<sup>1,2</sup> Type IV Forward Throw Vertical Lamp
  - QV<sup>1,2</sup> Type V Vertical Lamp
  - 3V-RNC<sup>1,2</sup> Type III Vertical Lamp, Reduced Nadir Candlepower (23" only)
  - QV-RNC<sup>1,2</sup> Type V Vertical Lamp, Reduced Nadir Candlepower (23" only)
- RNC (Reduced Nadir Candlepower) optics should be specified only in applications requiring extreme maximum to minimum uniformity ratios (5 to 1 or lower). Reduced luminaire efficiency with RNC optics will result in lower average footcandle levels.
- 35V Type III Vertical Lamp Mallmaster Semi-cutoff (23" only)
  - QSV Type V Vertical Lamp Mallmaster Semi-cutoff (23" only)

1. 14" and 18" luminaires with vertical lamp optics are supplied standard with high temperature resistant thermoplastic sag lens. 23" luminaires with vertical lamp optics are supplied standard with a sag glass lens.

2. 18" and 23" 3V/QV optical systems feature an upper (factory set) cutoff socket position. For wider spacings, a lower (field adjustable) semi-cutoff socket position may be set.

3. 14" vertical lamp optics require a medium base lamp. Not Available with 480V.

1611 Clovis Barker Road, San Marcos, TX 78666  
(800) 227-0758 (512) 753-1000 FAX: (512) 753-7855 [sitelighting.com](http://sitelighting.com)

© 2011 Koninklijke Philips Electronics N.V. All Rights Reserved.

Philips Gardco reserves the right to change materials or modify the design of its product without notification as part of the company's continuing product improvement program.

79215-S0/0811

**PHILIPS**





### WATTAGE

**(E)** Wattages marked with circle "E" meet federal energy efficiency standards applicable to 150 watt through 500 watt metal halide luminaires only.

	14"	18"	23"
Pulse Start MH Magnetic Ballast	100MH <sup>1A</sup> 150MH <sup>1A</sup> 175PSMH <sup>1E</sup> 200MH <sup>1A</sup>	250PSMH <sup>1E</sup> 250PS90 <sup>***E</sup> 320PSMH <sup>1E</sup> 350PSMH <sup>1E</sup> 400PSMH <sup>1E</sup>	450PSMH <sup>1E</sup> 750PSMH <sup>1E</sup> 775PSMH <sup>1E</sup> 875PSMH <sup>1E</sup> 1000PSMH <sup>1E</sup>
CosmoPolis Electronic System	60CMPE <sup>11</sup> 90CMPE <sup>11</sup> 140CMPE <sup>11</sup>	60CMPE <sup>11</sup> 90CMPE <sup>11</sup> 140CMPE <sup>11</sup>	
MasterColor Elite Electronic System		210MCE-3K <sup>11E</sup> 210MCE-4K <sup>11E</sup> 315MCE-3K <sup>11E</sup> 315MCE-4K <sup>11E</sup>	210MCE-3K <sup>11E</sup> 210MCE-4K <sup>11E</sup> 315MCE-3K <sup>11E</sup> 315MCE-4K <sup>11E</sup>
Pulse Start MH Electronic Ballast		250PSE <sup>11E</sup> 320PSE <sup>11E</sup>	
Standard MH Magnetic Ballast**	175MH <sup>2A</sup>	250MH <sup>2A</sup> 400MH <sup>2A</sup>	400MH <sup>2A</sup> 1000MH <sup>2A</sup>
High Pressure Sodium Magnetic Ballast	70HPS <sup>3A</sup> 100HPS <sup>3A</sup> 150HPS <sup>3A</sup>	250HPS 400HPS	400HPS 750HPS 1000HPS

\*\* 175MH, 250MH and 400MH not available for sale in the United States.  
\*\*\* 250PS90 includes a 90% efficient magnetic PSMH ballast, meeting the requirements of California Title 20, effective 1/1/2010.

### OPTIONS

- |  |  |
|--|--|
| <b>HS<sup>12</sup></b> Internal House Side Shield                              | <b>ACR<sup>14</sup></b> Acrylic Sag Lens                     |
| <b>F</b> Fusing  | <b>POLY<sup>15</sup></b> Polycarbonate Sag Lens              |
| <b>LF<sup>13</sup></b> In-Pole/In-Line Fusing                                  | <b>SG<sup>16</sup></b> Sag Glass Lens                        |
| <b>PCT<sup>14</sup></b> Locking Type Photocontrol Receptacle with Photocontrol | <b>QS<sup>17</sup></b> Quartz Standby                        |
| <b>PCR</b> Locking Type Photocontrol Receptacle                                | <b>QST<sup>18</sup></b> Quartz Standby - Timed Delay         |
| <b>PCB<sup>14</sup></b> Button Photocontrol                                    | <b>Q924<sup>19</sup></b> Quartz Emergency                    |
| <b>MF<sup>15</sup></b> Mast Arm Fitter   | <b>QT924<sup>19</sup></b> Quartz Emergency - Timed Delay     |
| <b>PTF2</b> Pole Top Fitter 2 3/8" X 4"  | <b>GMR<sup>20</sup></b> Provision for Gardco Motion Response |
| <b>PTF3</b> Pole Top Fitter 3 - 3 1/2" X 6"                                    | <b>L6<sup>21</sup></b> LumiStep Ballast 6 hour               |
| <b>PTF4</b> Pole Top Fitter 3 1/2 - 4" X 6"                                    | <b>L8<sup>22</sup></b> LumiStep Ballast 8 hour               |
| <b>AP<sup>16,17</sup></b> Adjustable Knuckle - Square Pole Mount               | <b>L10<sup>23</sup></b> LumiStep Ballast 10 hour             |
| <b>AT<sup>17</sup></b> Adjustable Knuckle - Tenon Mount                        |  |
| <b>CR<sup>23</sup></b> Colored Reveals   |  |

### VOLTAGE

- 120  
208  
240  
277  
347  
480
- QUAD**  
120/208/240/277  
factory tied to 277V.
- 200-277**  
CMPE, MCE, and  
PSE types only.

### FINISH

- BRP** Bronze Paint  
**BLP** Black Paint  
**WP** White Paint  
**NP** Natural Aluminum Paint  
**OC** Optional Color Paint  
Specify Optional Color or RAL ex: OC-LGP or OC-RAL7024.  
**SC** Special Paint  
Specify. Must supply color chip.

- Requires mogul base lamp in horizontal optics and medium base lamp in vertical optics.
- Not Available in 480V.
- Requires medium base lamp.
- Requires mogul base lamp.
- All 200MH and all MH 150W and below are pulse start by design.
- Available with vertical lamp optics only.
- Requires BT28 / E28 lamp.
- CMPE and MCE types available in 120V, 200-277V, 347V, or 480V. 120V, 347V and 480V require and include an auxiliary transformer. For MCE types, "-3K" indicates a 3,000°K lamp, "-4K" indicates a 4,000°K lamp. PSE types available in 200 - 277V only.
- Supplied standard for FHIFV.
- Kit includes In-Line Fuses.
- Not Available with 480V.
- Available for 18" or 23" units only. Requires 2 3/8" O.D. Mast Arm.
- Only available with single and twin luminaires @ 180°. Mounts to square poles only.
- Not available with 23" units.
- In lieu of glass - Not available with 23" units.
- See QSIQ924 Table.
- Available only with 14" 175PSMH or 150HPS and 18" 250PSMH through 400PSMH or 250HPS through 400HPS wattages. Includes dual-level capacitor and wiring to connect to Gardco Motion Response System.
- 18" or 23" only. Supplied standard with 23" luminaires with vertical optics.
- Available with CosmoPolis system only. See submittal sheet GE200-005 for complete information on LumiStep ballasts.
- Available with Decolume only. Specify color. Contact factory for availability.

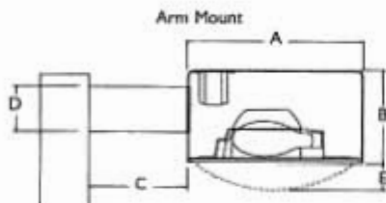
(Note 19) QS / Q924 Table

HID Lamp Watts	Maximum Quartz Lamp Watts
175 watts or less	100 Watts
Above 175 watts up to 400 watts	150 Watts

14" luminaires limited to 100 watt quartz lamp maximum regardless of HID wattage. QS, QST, Q924 and QT924 options are not available in luminaires above 400 watt HID.

### DIMENSIONS AND EPA (CONTINUED ON PAGE 3)

ARM MOUNT	14"	18"	23"
<b>A</b>	14" sq 35.56cm	18" sq 45.72cm	23" sq 58.42cm
<b>B</b>	7" 17.78cm	10" 25.40cm	14.5" 36.83cm
<b>C Arm Length</b>	6" 15.24cm	9" 22.86cm	12" 30.48cm
<b>D Arm Height</b>	5" 12.70cm	5" 12.70cm	8" 20.32cm
<b>E Drop Lens</b>	2" 5.08cm	4" 10.16cm	6.5" 16.51cm



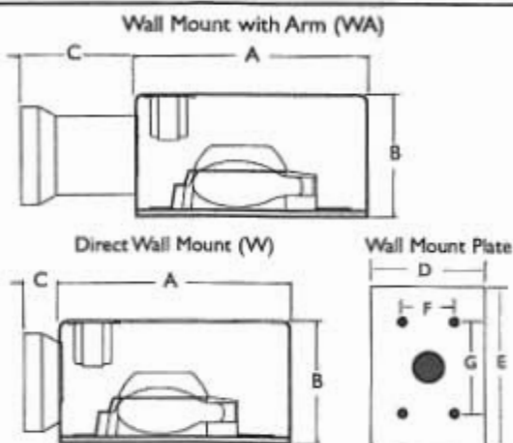
ECOLUME and DECOLUME	EPA (Effective Projected Area) ft <sup>2</sup> / m <sup>2</sup>		
	Single	Twin 180°	Quad
14" units	1.1 / .103	2.2 / .205	2.7 / .251
18" units	1.9 / .177	3.8 / .354	4.8 / .446
23" units	3.6 / .335	7.3 / .679	8.8 / .818

ECOLUME and DECOLUME	Single Luminaire Weight (lbs / kg)
14" units	30 / 13.61
18" units	50 / 22.68
23" units	90 / 40.83



### DIMENSIONS AND EPA (CONTINUED FROM PAGE 2)

WALL MOUNT / WALL MOUNT PLATE			
	14"	18"	23"
<b>A (W &amp; WA)</b>	14" sq 35.56cm	18" sq 45.72cm	23" sq 58.42cm
<b>B (W &amp; WA)</b>	7" 17.78cm	10" 25.40cm	14.5" 36.83cm
<b>C (WA only)</b>	8" 20.32cm	11" 27.94cm	14" 35.56cm
<b>C (W only)</b>	2" 5.08cm	2" 5.08cm	2" 5.08cm
<b>D (W &amp; WA)</b>	5" 12.70cm	5" 12.70cm	5" 12.70cm
<b>E (W &amp; WA)</b>	7" 17.78cm	7" 17.78cm	7.38" 18.75cm
<b>F (W &amp; WA)</b>	2.25" 5.72cm	2.25" 5.72cm	4" 10.16cm
<b>G (W &amp; WA)</b>	4" 10.16cm	4" 10.16cm	6.5" 16.51cm



### SPECIFICATIONS

**GENERAL DESCRIPTION:** Each Emco Ecolume and Decolume is a cutoff luminaire for high intensity discharge lamps. Internal components are totally enclosed, rain-tight, dust-tight, and corrosion resistant. No venting of the optical system or electrical components is required or permitted. Lamping requires no lifting or hinging of the luminaire housing, disturbing wiring or exposing uninsulated live parts.

**HOUSING:** The housing wrapper is one-piece dieformed aluminum. The housing has an integral reinforcing spine and no welded corners. Silicone seals provide a weathertight seal at all points of material transition.

**LENS:** A mitered, extruded anodized aluminum door frame retains the optically clear, heat and impact resistant tempered flat glass in a sealed manner using hollow section, high compliance, memory retentive extruded silicone rubber. A non-yellowing drop acrylic lens is provided standard on 14" and 18" vertical lamp and a sag glass lens is provided on 23" vertical lamp luminaires. A single flush 1/4 turn captive fastener permits easy access to the luminaire.

**OPTICAL SYSTEMS:** The segmented reflector system consists of two levels of highly specular aluminum facets precisely aligned to achieve specified photometric distributions. The entire optical system is field rotatable in 90° increments. The position-oriented mogul base socket is glazed porcelain with a nickel plated screw shell. A lamp stabilizer is standard on 3H and QH 400W MH and PSMH units.

**ELECTRICAL:** All electrical components are UL recognized and factory tested. Electronic and magnetic HID ballasts are high power factor. Magnetic HID ballasts are the separate component type. The ballast is mounted on a unitized tray and secured within the luminaire, above the reflector system. Electronic and magnetic HID ballasts are capable of providing reliable lamp starting down to -20°F / -29°C. Standard fluorescent ballasts are solid state.

Luminaires provided with the CosmoPolis or MasterColor Elite high performance ceramic metal halide electronic system include high power factor electronic ballasts, designed specifically for the system selected.

**FINISH:** Each luminaire receives a fade and abrasion resistant, electrostatically applied, thermally-cured polyester powder finish after fabrication.

**LABELS:** All luminaires bear UL or CUL (where applicable) Wet Location labels.

**COLOR BANDS:** Decolume luminaires may be specified with factory-applied color accents which nest in the twin reveals at the lower perimeter of the housing. Consult factory for available colors.

**WARRANTY:** Luminaires in the Emco product family feature a 1 year limited warranty. See Warranty Information on [www.sitelighting.com](http://www.sitelighting.com) for complete details and exclusions.

**FULL CUTOFF PERFORMANCE:** Full cutoff performance means a luminaire distribution where zero candela intensity occurs at an angle at or above 90° above nadir. Additionally, the candela per 1000 lamp lumens does not numerically exceed 100 (10 percent) at a vertical angle of 80° above nadir. This applies to all lateral angles around the luminaire.

**CUTOFF PERFORMANCE:** Cutoff performance means a luminaire distribution where the candela per 1000 lamp lumens does not numerically exceed 25 (2.5 percent) at an angle at or above 90° above nadir, and 100 (10 percent) at a vertical angle of 80° above nadir. This applies to all lateral angles around the luminaire.

**SEMI-CUTOFF PERFORMANCE:** Semi-Cutoff performance means a luminaire distribution where the candela per 1000 lamp lumens does not numerically exceed 50 (5.0 percent) at an angle at or above 90° above nadir, and 200 (20 percent) at a vertical angle of 80° above nadir. This applies to all lateral angles around the luminaire.



Job: Luby's Rockwall  
 Type:  
 Notes:

# Poles

## 5" / 6" Straight Square Steel

The Philips Gardco SSS straight steel pole consists of a one-piece square fabricated steel lighting standard. The carbon steel base plate is secured to the shaft with a continuous circumferential weld providing excellent strength and integrity. The poles are finished with an electrostatically applied, thermally cured TGIC polyester powdercoat. All poles include anchor bolts, full base cover, hand hole, ground lug and top cap.



PREFIX	HEIGHT	SIZE	GAUGE	DRILLING	FINISH	OPTIONS
SSS	25	5	7	D2	BRP	

Enter the order code into the appropriate box above. Note: Philips Gardco reserves the right to refuse a configuration. Not all combinations and configurations are valid. Refer to notes below for exclusions and limitations. For questions or concerns, please consult the factory.

PREFIX	HEIGHT	SIZE	GAUGE	DRILLING
SSS5	20'	5"	7	D1 1 Way
SSS6	25'	6"	11	D2 2 Way
	30'			D2@90 2 Way at 90°
	35'			D3 3 Way
	40'			D4 4 Way
				T2 2 3/8" OD Tenon
				T4 4" OD Tenon

### FINISH

PP	Prime Painted
BRP	Bronze Paint
BLP	Black Paint
WP	White Paint
NP	Natural Aluminum Paint
GV	Galvanized (No Paint)
FPGV	Finished Paint over Galvanized (specify color)
OC	Optional Color Paint Specify RAL designation ex OC-RAL7024.
SC	Special Color Paint Specify. Must supply color chip.

### OPTIONS

FES	Festoon Outlet	<i>For Festoon Outlets and Additional Hand Holes, indicate height above base and orientation to original hand hole. See Pole Orientation Information on Page 4.</i>
AHH	Additional Hand Hole	
<b>Couplings</b>		
<i>Indicate size (1/2", 3/4", 1", 1 1/4", 1 1/2".) Indicate height above base and orientation to hand hole. See Pole Orientation Information on Page 4.</i>		
CL	Coupling - Internal thread	
<b>Single Mount Bullhorn Brackets</b>		
<i>Indicate height above base and orientation to hand hole. See Pole Orientation Information on Page 4.</i>		
GM-080-19	Single - 1.9" OD	
GM-080-24	Single - 2.4" OD	
<b>Motion Response Provisions</b>		
GMR	Provision for Gardco HID Motion Response System	<i>Minimum Pole Height is 18'. Includes a 1/2" coupling placed 180° to the hand hole, 12" above the pole base.</i>
MSM	Motion Sensor Mounting Provision for LED Luminaires available with Motion Response	<i>Minimum Pole Height is 18'. Includes a special hand hole with 1/2" coupling placed in the cover plate, 180° to the hand hole, 15" above the pole base.</i>

Refer to Steel Pole Accessories sheet 79415-26 for additional accessories.

PHILIPS



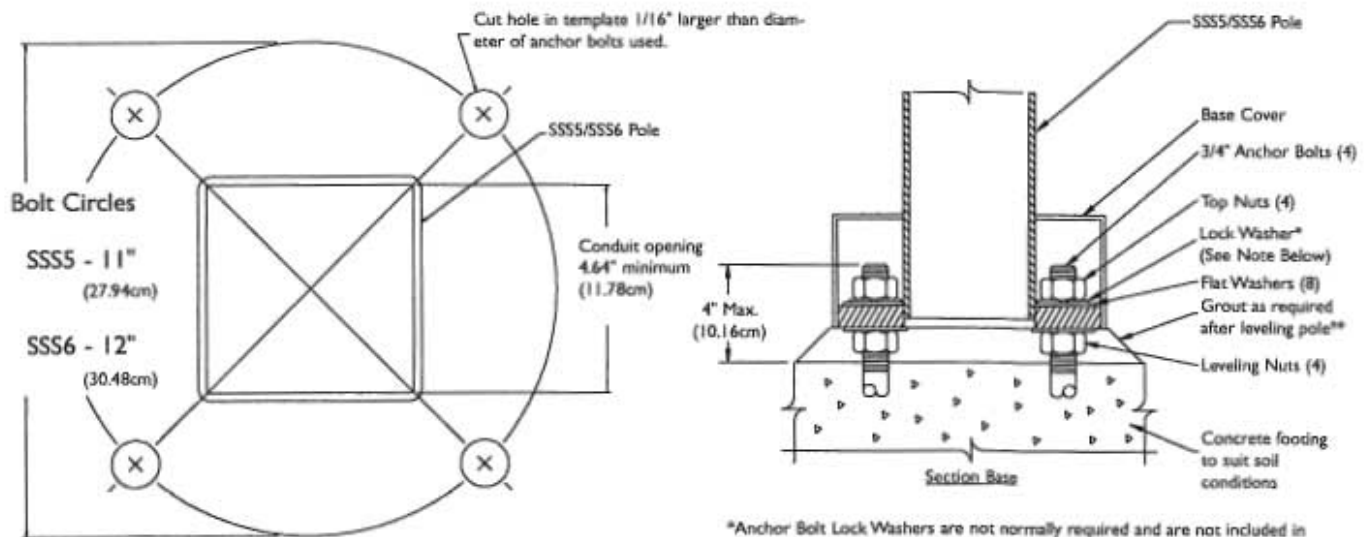


### POLE DATA

CATALOG NUMBER		POLE SIZE		MAXIMUM LUMINAIRE LOADING <sup>1</sup>									ANCHOR BOLT DATA <sup>2</sup>		
				HIGH WIND CONDITIONS						NORMAL WIND CONDITIONS					
				130 MPH		120 MPH		110 MPH		100 MPH	90 MPH	80 MPH			
PREFIX	HEIGHT (FT.)	POLE SIZE (inches)	GAUGE	EPA FT <sup>2</sup>	Max Weight (lbs)	EPA FT <sup>2</sup>	Max Weight (lbs)	EPA FT <sup>2</sup>	Max Weight (lbs)	EPA FT <sup>2</sup>	EPA FT <sup>2</sup>	EPA FT <sup>2</sup>	BOLT CIRCLE (inches)	BOLT SIZE (inches)	MAX PROJ. (inches)
SSS	20	5	11	3.5	88	5.0	125	7.0	175	9.4	12.7	17.7	11.0"	3/4 x 17 x 3	4.0"
SSS	20	5	7	6.2	155	8.2	205	10.7	270	16.2	21.4	28.1	11.0"	3/4 x 17 x 3	4.0"
SSS	25	5	11	-	-	-	-	2.1	53	3.7	6.3	9.8	11.0"	3/4 x 17 x 3	4.0"
SSS	25	5	7	2.7	68	4.3	108	6.3	158	9.5	13.3	18.5	11.0"	3/4 x 17 x 3	4.0"
SSS	30	5	11	-	-	-	-	-	-	-	2.0	4.7	11.0"	3/4 x 17 x 3	4.0"
SSS	30	5	7	-	-	-	-	2.0	50	3.9	6.7	10.7	11.0"	3/4 x 17 x 3	4.0"
SSS	30	6	7	-	-	3.3	83	5.6	140	9.0	13.2	19.0	12.0"	1 x 36 x 4	4.0"
SSS	35	5	7	-	-	-	-	-	-	-	2.5	5.9	11.0"	3/4 x 17 x 3	4.0"
SSS	35	6	7	-	-	-	-	-	-	4.2	7.6	12.4	12.0"	1 x 36 x 4	4.0"
SSS	40	6	7	-	-	-	-	-	-	-	3.0	7.2	12.0"	1 x 36 x 4	4.0"

- Warning:** Additional wind loading, in terms of EPA, from banners, cameras, floodlights and other accessories attached to the pole, must be added to the luminaire(s) EPA before selecting the pole with the appropriate wind load capability.
- Factory supplied template must be used when setting anchor bolts. Philips Gardco will not honor any claim for incorrect anchorage placement resulting from failure to use factory supplied templates.

### DIMENSIONS



**NOTE:** Factory supplied template must be used when setting anchor bolts. Philips Gardco will not honor any claim for incorrect anchorage placement from failure to use factory supplied templates.

\*Anchor Bolt Lock Washers are not normally required and are not included in standard anchor bolt sets. They are available upon request at additional cost.  
 \*\* Grouting should include a drainage slot or tube (by others) to permit water to drain from the base of the pole. Failure to provide drainage may weaken the pole base structure over time and may result in pole base failure, for which Philips Gardco is not responsible.



### SPECIFICATIONS

**POLE SHAFT:** The pole shaft is fabricated from a single-piece of 11 ga (.1196") or 7 ga (.1793") commercial carbon steel. The formed steel plate is longitudinally welded providing minimum yield strength of 46 KSI.

**ANCHOR BASE:** The pole anchor base is fabricated from A-36 structural quality carbon steel with a minimum yield strength of 36 KSI. The base plate telescopes the pole shaft and is circumferentially welded on both top and bottom.

**ANCHOR BOLTS:** Anchor bolts are fabricated from a commercial quality hot rolled carbon steel bar that meets or exceeds a minimum guaranteed yield strength of 50,000 psi. Bolts have an "L" bend on one end and threaded on the opposite end. Anchor bolts are galvanized a minimum of 12" on the threaded end. Four (4) properly sized bolts, each furnished with two (2) regular hex nuts and two (2) flat washers, are provided per pole, unless otherwise specified.

**BASE COVER:** A two-piece base cover completely conceals the entire base plate and anchorage.

**HAND HOLE:** The reinforced hand hole has a nominal rectangular 2" X 4" inside opening in the pole shaft. Included is a cover plate with attachment screws. The hand hole is located 18" above the base and 180° clockwise with respect to the luminaire arm when viewed from the top of the pole for one arm. For two arms the hand hole is located directly under one arm.

**POLE TOP CAP:** Each pole assembly is provided with a removable pole top cap.

**FINISH:** Poles are available with a bronze, natural, white or black electrostatically applied, thermally cured TGIC polyester powdercoat finish.

**STOCK POLES:** Poles provided from stock under the Quick Ship program are drilled for four (4) luminaires at 90° with three (3) hole sets plugged.

### GENERAL POLE INFORMATION

**DESIGN:** The poles as charted are designed to withstand dead loads and predicted dynamic loads developed by variable wind speeds with an additional 30% gust factor under the following conditions:

The charted weights include luminaire(s) and/or mounting bracket(s).

The wind velocities are based on 10 mph increments from 80 mph through 100 mph. Poles to be located in areas of known abnormal conditions may require special consideration. For example: coastal areas, airports and areas of special winds.

Poles are designed for ground mounted applications. Poles mounted on structures (such as buildings and bridges) may also necessitate special consideration requiring Philips Gardco's recommendation.

Height correction factors and drag coefficients are applied to the entire structure. An appropriate safety factor is maintained based on the minimum yield strength of the material incorporated in the pole.

**WARNING:** This design information is intended as a general guideline only. The customer is solely responsible for proper selection of pole, luminaire, accessory and foundation under the given site conditions and intended usage. The addition of any items to the pole, in addition to the luminaire, will dramatically impact the EPA load on that pole. It is strongly recommended that a qualified professional be consulted to analyze the loads given the user's specific needs to ensure proper selection of the pole, luminaire, accessories, and foundation. Philips Gardco assumes no responsibility for such proper analysis or product selections. **Failure to insure proper site analysis, pole selection, loads and installation can result in pole failure, leading to serious injury or property damage.**

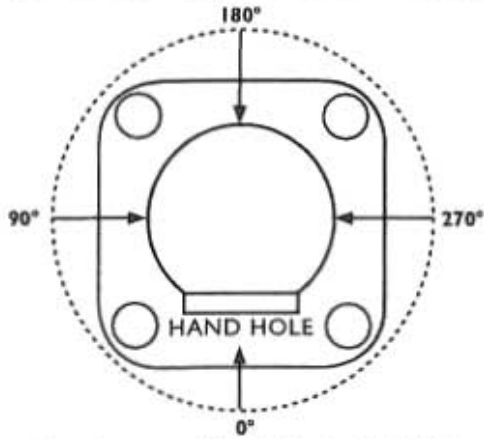
**GENERAL INFORMATION:** Mounting height is the vertical distance from the base of the lighting pole to the center of the luminaire arm at the point of luminaire attachment. Twin arms as charted are oriented at 180° with respect to each other. For applications of two (2) arms at 90° or other multiple arm applications, consult the factory.

**WARRANTY:** Philips Gardco poles feature a 1 year limited warranty. See Warranty Information on [www.sitelighting.com](http://www.sitelighting.com) for complete details and exclusions.



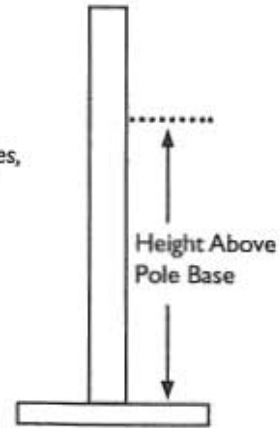
### ORIENTATION INFORMATION

#### FACTORY INSTALLED OPTIONS AND ACCESSORIES



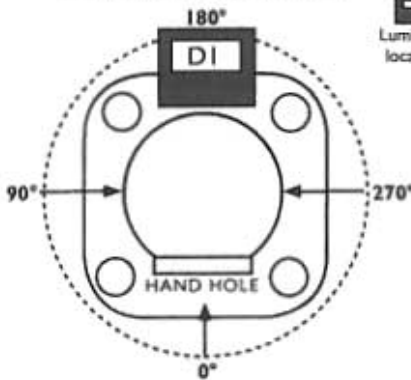
Orientation is measured clockwise from the Hand Hole Center.

For Factory Installed Options and Accessories,  
Specify Orientation from Hand Hole and  
Height Above Pole Base Where Required.

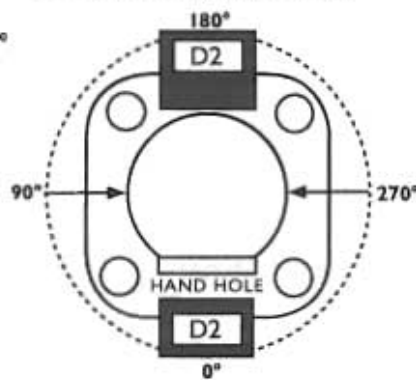


#### STANDARD ARM MOUNT LUMINAIRE ORIENTATION

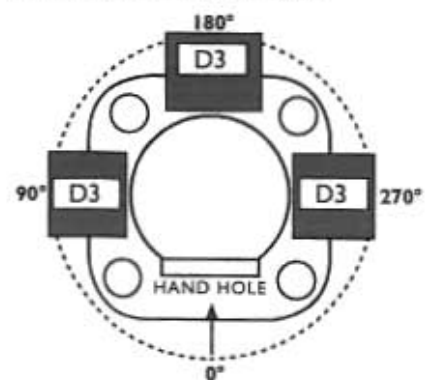
D1 Drilled for Single Luminaire



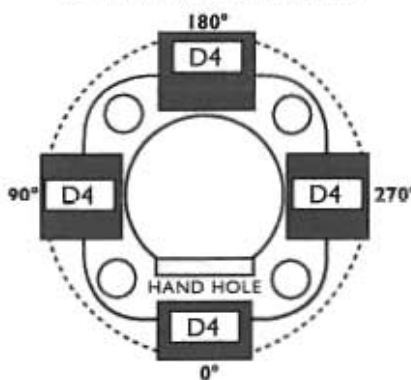
D2 Drilled for 2 Luminaires at 180°



D3 Drilled for 3 Luminaires @ 90°



D4 Drilled for 4 Luminaires at 90°



D2@90 Drilled for 2 Luminaires at 90°

