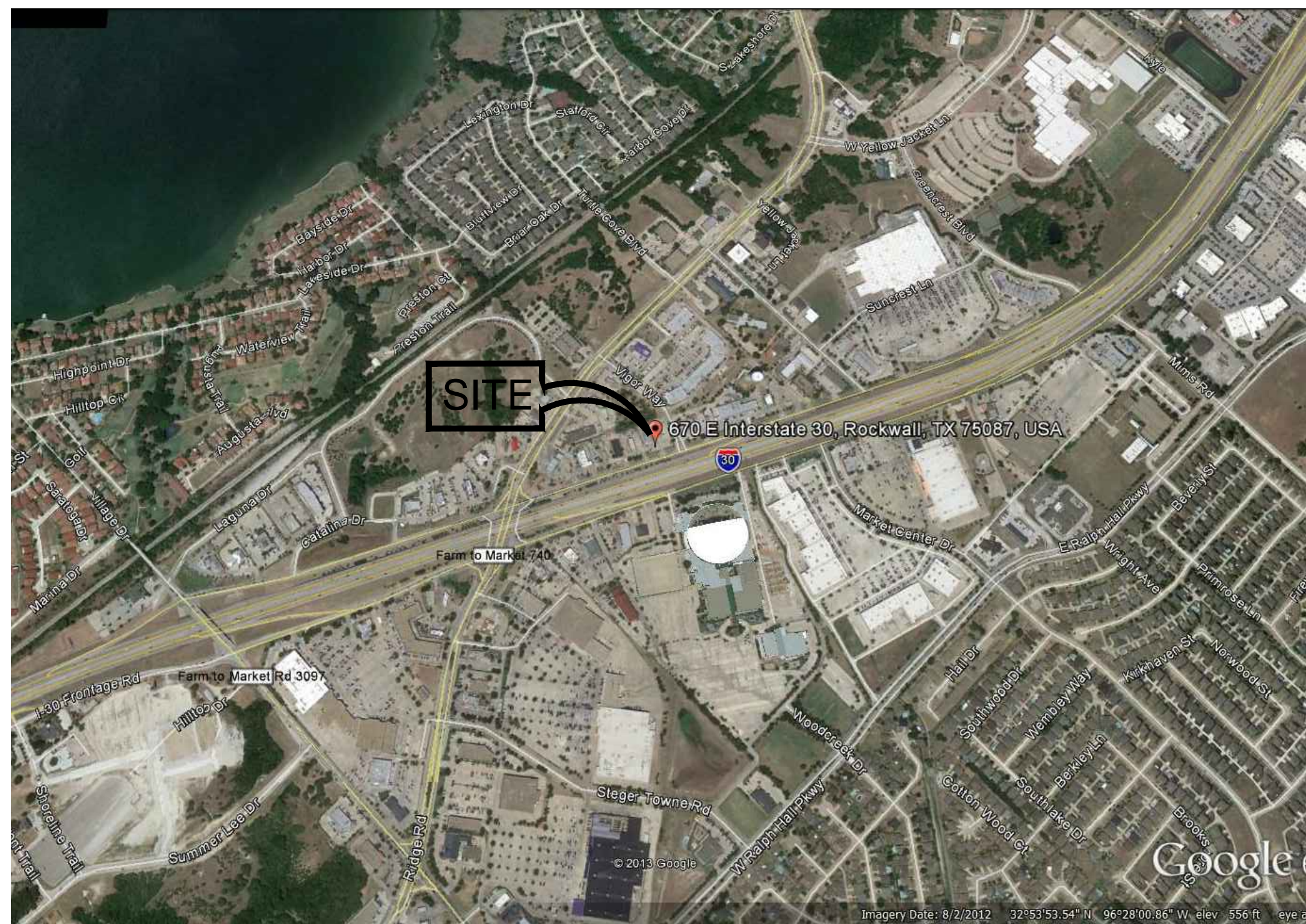


DENNY'S RESTAURANT: CONVERT EXIST. BURGER KING TO A DENNY'S RESTAURANT

670 E. I-30, ROCKWALL, TEXAS 75087

VICINITY MAP



PROJECT INFO.

NAME: DENNY'S RESTAURANT CONVERSION
SITE AREA: 670 E. I-30, ROCKWALL, TX 75087
ZONING: 0.89 AC. (59,017 S.F.)
BUILDING COVER: (C) COMMERCIAL DISTRICT WITHIN IH-30 OVERLAY DISTRICT
LANDSCAPING: 11% (4,383 S.F.)
IMPERVIOUS COVER: PROPOSED - 25% (9,273 S.F.)
 EXISTING - 18% (7,077 S.F.)
 PROPOSED - 64% (25,239 S.F.)
BUILDING USE: EXISTING - 70% (27,435 S.F. INCLUDING DRIVE THRU)
 NEW DINE IN RESTAURANT
 (NO DRIVE THRU OR PATIO)
CONSTRUCTION TYPE: V-B
OCCUPANCY: A-2
ACTUAL AREA: 4,383 S.F. (INCLUDES 3,859 S.F. EXISTING, 524 S.F. ADDITION)
NUMBER OF STORIES: 1
MAX. HEIGHT: PARAPET: 18'-6"
PARKING CALCULATIONS: NEW SIGN ELEMENT: 23'-2" (SOUTH ELEV.)
 1 SPACE PER 100 S.F.: 4,383 S.F./100 S.F.=44 PARKING SPACES REQUIRED
 50 PARKING SPACES PROVIDED INCLUDING 2 ACCESSIBLE PARKING SPACES

ADOPTED CONSTRUCTION CODES:
 2009 INTERNATIONAL BUILDING CODE WITH LOCAL AMENDMENTS
 2009 INTERNATIONAL FIRE CODE WITH LOCAL AMENDMENTS
 2009 INTERNATIONAL MECHANICAL CODE WITH LOCAL AMENDMENTS
 2009 INTERNATIONAL PLUMBING CODE WITH LOCAL AMENDMENTS
 2009 INTERNATIONAL FUEL GAS CODE WITH LOCAL AMENDMENTS
 2009 INTERNATIONAL ENERGY CONSERVATION CODE WITH LOCAL AMENDMENTS
 2008 NATIONAL ELECTRICAL CODE WITH LOCAL AMENDMENTS

OWNER:

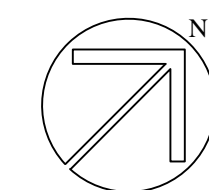
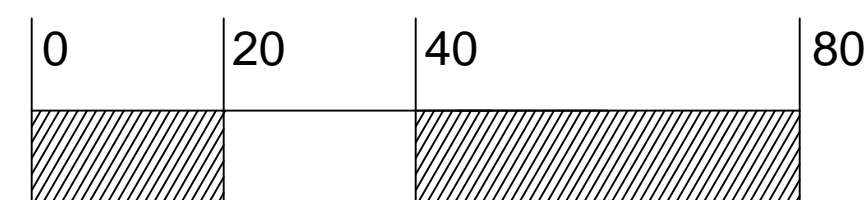
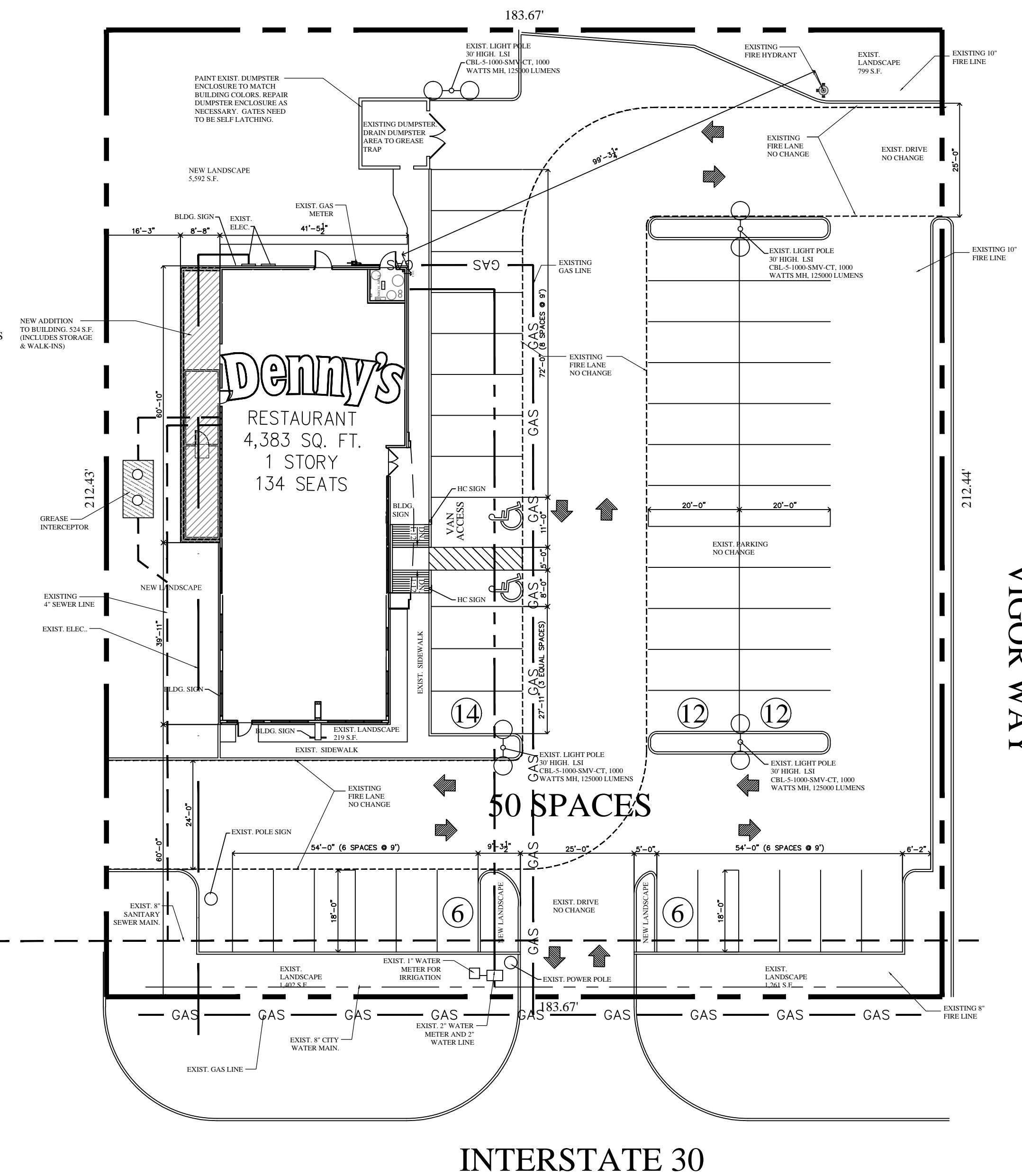
CONTINENTAL RESTAURANTS, INC.
 3405 SPECTRUM BLVD.
 RICHARDSON, TEXAS 75082
 CONTACT: SYED AHMAD
 PHONE: (503) 906-1290
 FAX: (503) 906-1297

PROJECT MANAGER:

FOOD SERVICE CONCEPTS, INC.
 1101-A WEST MELINDA LANE
 PHOENIX, ARIZONA 85027
 CONTACT: KEVIN KILLHAM
 PHONE: (623)-492-0077
 FAX: (623)-492-0840

LANDSCAPE ARCHITECT:

OUTDOOR CREATIONS
 4368 STATE HWY. 276
 ROCKWALL, TEXAS 75032
 CONTACT: NEAL SCHRATO
 PHONE: (972) 771-2526



SITE PLAN
 SCALE: 1"=20'-0"

GENERAL NOTES:
 THIS PLAN IS THE PROPERTY OF FOOD SERVICE CONCEPTS, INC. AND ANY USE OF THIS PLAN WITHOUT THE WRITTEN PERMISSION OF FOOD SERVICE CONCEPTS, INC. IS PROHIBITED. NO PART OF THIS PLAN SHALL BE REPRODUCED OR TRANSMITTED IN ANY FORM OR BY ANY MEANS, ELECTRONIC OR MECHANICAL, INCLUDING PHOTOCOPYING, RECORDING, OR BY ANY INFORMATION STORAGE AND RETRIEVAL SYSTEM, WITHOUT THE WRITTEN PERMISSION OF FOOD SERVICE CONCEPTS, INC.

REVISIONS

NO.	DATE	DESCRIPTION
1		
2		
3		
4		
5		
6		
7		
8		
9		
10		
11		
12		

DATE: 06/24/13
 DRAWN: L.K.
 CHECKED BY: K.K.

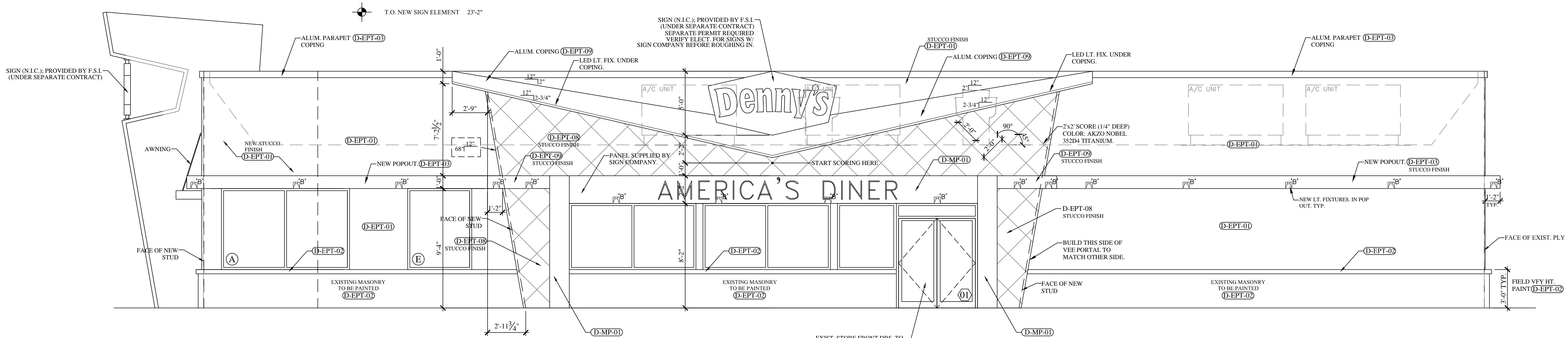
(623) 492-0077
 FAX: (623) 492-0840
FOOD SERVICE CONCEPTS, INC.
 1101-A WEST MELINDA LANE
 PHOENIX, ARIZONA 85027

Denny's
 670 E. I-30
 ROCKWALL, TX 75087

SITE PLAN

SP1

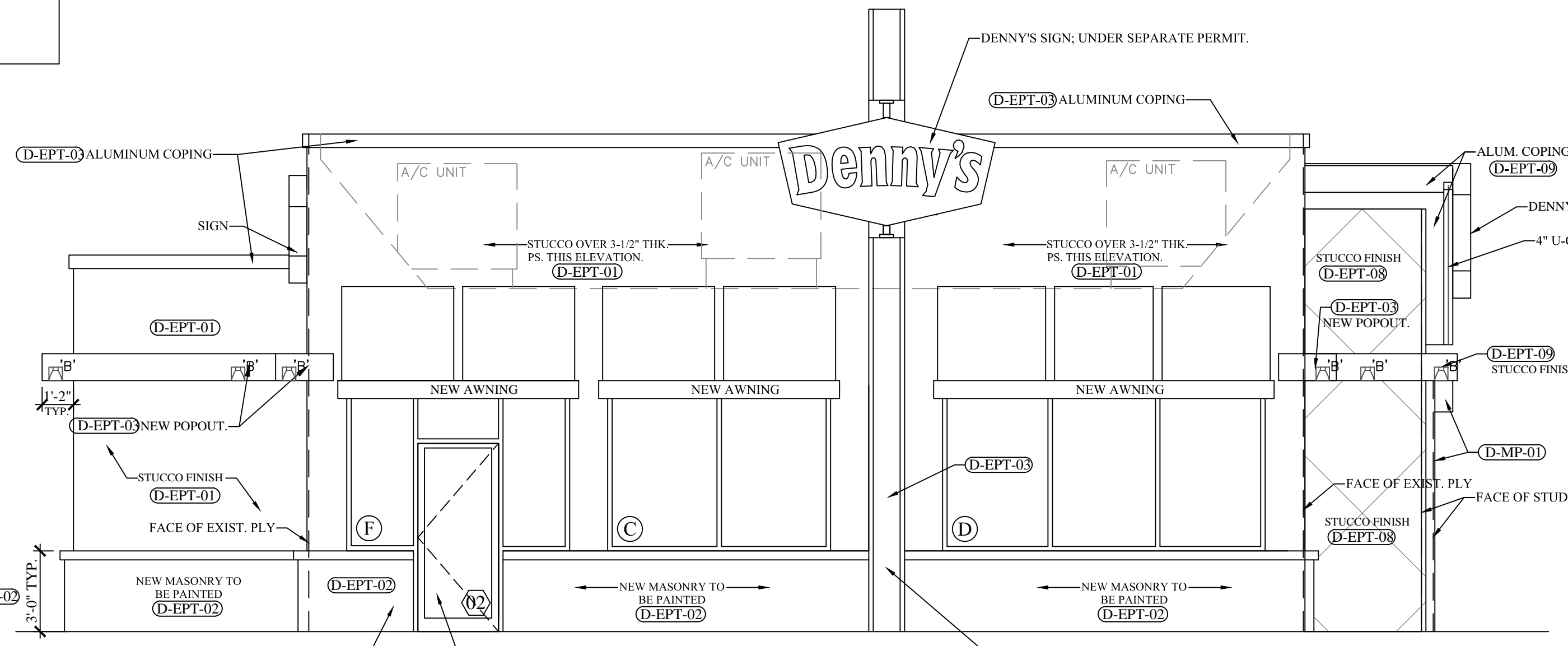
CASE NUMBER: SP2013-016



FINISH MATERIAL CALCULATIONS:
 1,979 S.F. - 273 S.F. WINDOWS/DOORS
 MASONRY: 16% (273 S.F.)
 STUCCO: 72% (1,227 S.F.)
 METAL VENEER: 12% (206 S.F.)

EAST ELEVATION

SCALE: 1/4" = 1'-0"



FINISH MATERIAL CALCULATIONS:
 966 S.F. - 192 S.F. WINDOWS/DOORS
 MASONRY: 17% (129 S.F.)
 STUCCO: 79% (614 S.F.)
 METAL VENEER: 4% (31 S.F.)

SOUTH ELEVATION

SCALE: 1/4" = 1'-0"

EXTERIOR FINISH LEGEND			
CODE	PRODUCT	VENDORS & SPECIFICATIONS	COLOR
D-EPT-01	EXTERIOR PAINT ACRYLIC (SEMI GLOSS)	SHERWIN WILLIAMS	TONY TAUPE #SW7038
D-EPT-02	EXTERIOR PAINT ACRYLIC (SEMI GLOSS)	SHERWIN WILLIAMS	WELL BRED BROWN #SW7027
D-EPT-03	EXTERIOR PAINT ACRYLIC (SEMI GLOSS)	SHERWIN WILLIAMS	COLOR MATCH MARTHA STEWART #MSL026 BARN
D-EPT-04	EXTERIOR PAINT ACRYLIC (SEMI GLOSS)	SHERWIN WILLIAMS	SEALSKIN #SW7675
D-EPT-08	EXTERIOR PAINT ACRYLIC (SEMI GLOSS)	SHERWIN WILLIAMS	PEARLY WHITE #SW7009
D-EPT-09	EXTERIOR PAINT ACRYLIC (SEMI GLOSS)	SHERWIN WILLIAMS	SW BEAU MONDE II 80-7 RED
D-MP-01	.080 ALUMINUM SKIN COVER W/ TECK. PAINT		AKZO NOBEL352D4 TITANIUM

NOTE: ALL STORE FRONT TO BE PAINTED D-EPT-04.

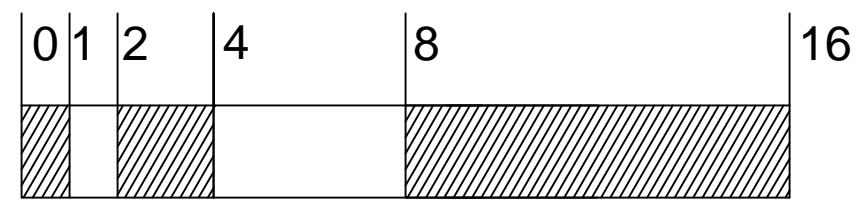
GENERAL ELEVATION NOTES

- ALL UTILITY BOXES (ELECTRICAL PANELS, GAS METER, ETC.) ARE TO BE PAINTED TO MATCH STUCCO FINISH IF PERMISSIBLE BY THE LOCAL UTILITY COMPANIES.
- DOWN SPOUTS AND GUTTERS TO BE PREFORMED & PREFINISHED, COLOR EP-02.
- ALL EXTERIOR LIGHT FIXTURES SHALL BE PREFINISHED, REFER TO E-DWGS.
- EXTERIOR WALL FINISH TO BE INSTALLED IN STRICT ACCORDANCE WITH MANUFACTURERS PUBLISHED INSTRUCTIONS.
- ALL METAL COMPONENTS ON EXTERIOR ARE TO BE PREFORMED & PREFINISHED WHERE EVER POSSIBLE.
- ALL EXTERIOR WOOD TRIM TO BE PAINTED "AZEK" TRIM BOARDS OR EQUAL.
- PROVIDE BLOCKING FOR AWNINGS TO ENSURE A 30LB PULL OUT OR BETTER.
- CAULKLINE AROUND WINDOWS AND DOORS SHALL BE 1/2" WIDE.
- INSTALL PANZER REINFORCING PER MFR INSTRUCTION BEHIND ALL D-EP-02.
- POLYSTYRENE UNDER STUCCO THICKNESS TO BE 1-1/2" UNLESS NOTED OTHERWISE.
- ALL STOREFRONT TO BE PAINTED D-EP-04.
- ALL AWNINGS PROVIDED BY FSI.

ABBREVIATIONS:
 CONTROL JOINT = C.J.
 TEMPERED GLASS = T.G.

LEGEND

- SEE WINDOW SCHEDULE
- ◻ SEE DOOR SCHEDULE
- ◻ SEE EXTERIOR COLOR SCHEDULE



REVISIONS

1	
2	
3	
4	
5	
6	
7	
8	
9	
10	
11	
12	

GENERAL NOTES

THIS PLAN IS THE PROPERTY OF FOOD SERVICE CONCEPTS, INC. AND ANY USE OF THIS PLAN WITHOUT THE WRITTEN PERMISSION OF FOOD SERVICE CONCEPTS, INC. IS PROHIBITED. NO LIABILITY IS ASSUMED BY F.S.C. FOR ERRORS OR OMISSIONS IN THESE DRAWINGS. NOT TO SCALE DRAWINGS.

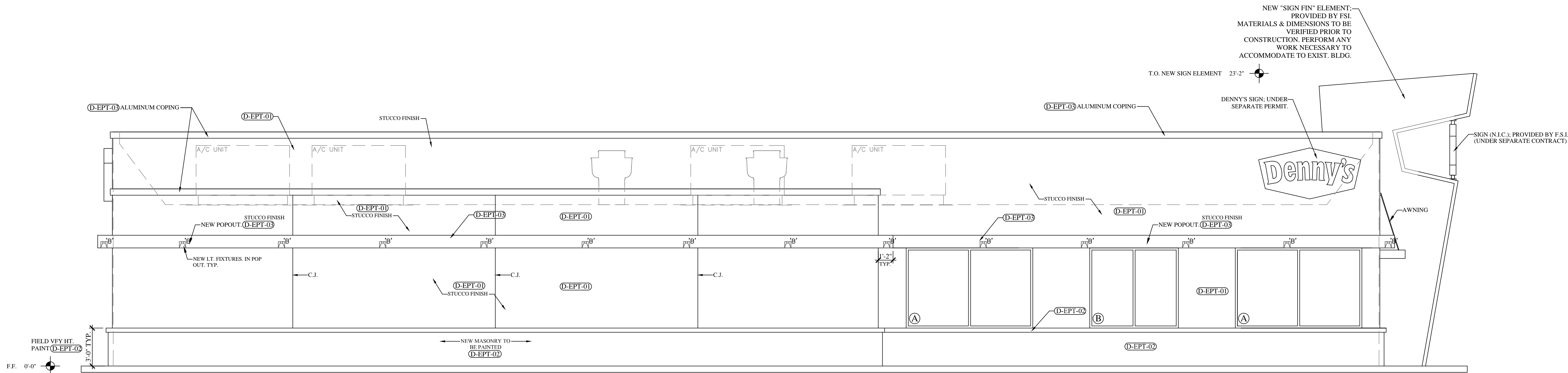
DATE	06/24/13
DRAWN	L.K.
CHECKED BY	K.K.

FOOD SERVICE CONCEPTS, INC.
 1101 A WEST MELBOURNE
 FRIEDLAND, ARIZONA 85527
 (623) 482-0077
 FAX (623) 492-0840

Denny's
 670 E. I-30
 ROCKWALL, TX 75087

PROPOSED
 EXT. ELEV.

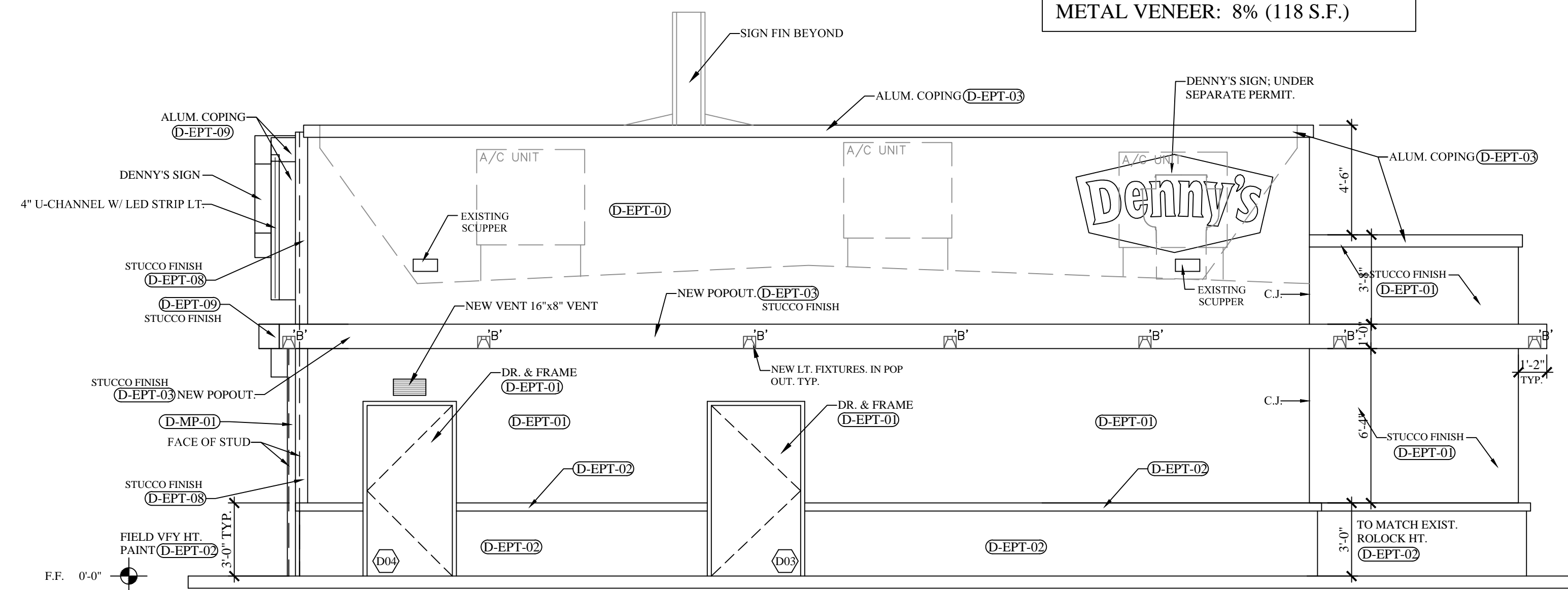
A2A



WEST ELEVATION

SCALE: 1/4" = 1'-0"

FINISH MATERIAL CALCULATIONS:
 1,979 S.F. - 171 S.F. WINDOWS/DOORS
 MASONRY: 19% (303 S.F.)
 STUCCO: 73% (1,133 S.F.)
 METAL VENEER: 8% (118 S.F.)



NORTH ELEVATION

SCALE: 1/4" = 1'-0"

FINISH MATERIAL CALCULATIONS:
 892 S.F. - 58 S.F. WINDOWS/DOORS
 MASONRY: 15% (127 S.F.)
 STUCCO: 85% (707 S.F.)

EXTERIOR FINISH LEGEND			
CODE	PRODUCT	VENDORS & SPECIFICATIONS	COLOR
D-EPT-01	EXTERIOR PAINT ACRYLIC (SEMI GLOSS)	SHERWIN WILLIAMS	TONY TAUPE #SW7038
D-EPT-02	EXTERIOR PAINT ACRYLIC (SEMI GLOSS)	SHERWIN WILLIAMS	WELL BRED BROWN #SW7027
D-EPT-03	EXTERIOR PAINT ACRYLIC (SEMI GLOSS)	SHERWIN WILLIAMS	COLOR MATCH MARTHA STEWART #MSL026 BARN
D-EPT-04	EXTERIOR PAINT ACRYLIC (SEMI GLOSS)	SHERWIN WILLIAMS	SEALSKIN #SW7675
D-EPT-08	EXTERIOR PAINT ACRYLIC (SEMI GLOSS)	SHERWIN WILLIAMS	PEARLY WHITE #SW7009
D-EPT-09	EXTERIOR PAINT ACRYLIC (SEMI GLOSS)	SHERWIN WILLIAMS	SW BEAU MONDE II 80-7 RED
D-MP-01	.080 ALUMINUM SKIN COVER W/ TECK. PAINT	AKZO NOBEL.352D4 TITANIUM	

NOTE: ALL STORE FRONT TO BE PAINTED D-EPT-04.

GENERAL ELEVATION NOTES

1. ALL UTILITY BOXES (ELECTRICAL PANELS, GAS METER, ETC.) ARE TO BE PAINTED TO MATCH STUCCO FINISH IF PERMISSIBLE BY THE LOCAL UTILITY COMPANIES.
2. DOWN SPOUTS AND GUTTERS TO BE PREFORMED & PREFINISHED, COLOR EP-02.
3. ALL EXTERIOR LIGHT FIXTURES SHALL BE PREFINISHED, REFER TO E-DWGS.
4. EXTERIOR WALL FINISH TO BE INSTALLED IN STRICT ACCORDANCE WITH MANUFACTURERS PUBLISHED INSTRUCTIONS.
5. ALL METAL COMPONENTS ON EXTERIOR ARE TO BE PREFORMED & PREFINISHED WHERE EVER POSSIBLE.
6. ALL EXTERIOR WOOD TRIM TO BE PAINTED "AZEK" TRIM BOARDS OR EQUAL.
7. PROVIDE BLOCKING FOR AWNINGS TO ENSURE A 300LB PULL OUT OR BETTER.
8. CAULKLINE AROUND WINDOWS AND DOORS SHALL BE 3/4" WIDE.
9. INSTALL PANZER REINFORCING PER MFR INSTRUCTION BEHIND ALL D-EP-02.
10. POLYSTYRENE UNDER STUCCO THICKNESS TO BE 1-1/2" UNLESS NOTED OTHERWISE.
11. ALL STOREFRONT TO BE PAINTED D-EP-04.
12. ALL AWNINGS PROVIDED BY FSI.

ABBREVIATIONS:
 CONTROL JOINT = C.J.
 TEMPERED GLASS = T.G.

LEGEND

- SEE WINDOW SCHEDULE
- ◻ SEE DOOR SCHEDULE
- SEE EXTERIOR COLOR SCHEDULE

- T.O. NEW SIGN ELEMENT 23'-2"
- T.O. NEW PARAPET 18'-6"
- T.O. NEW PARAPET 14'-0"
- B.O. POP-OUT 9'-4"
- F.F. 0'-0"

GENERAL NOTE:
 THIS PLAN IS THE PROPERTY OF FOOD SERVICE CONCEPTS, INC. AND ANY USE OF THIS PLAN WITHOUT THE WRITTEN PERMISSION OF FOOD SERVICE CONCEPTS, INC. IS PROHIBITED. NO LIABILITY IS ASSUMED BY F.S.C. FOR DAMAGES OF ANY KIND, INCLUDING BUT NOT LIMITED TO, LOSS OF PROFITS, BUSINESS INTERRUPTION, OR ANY OTHER ECONOMIC LOSS.

REVISIONS

1	
2	
3	
4	
5	
6	
7	
8	
9	
10	
11	
12	

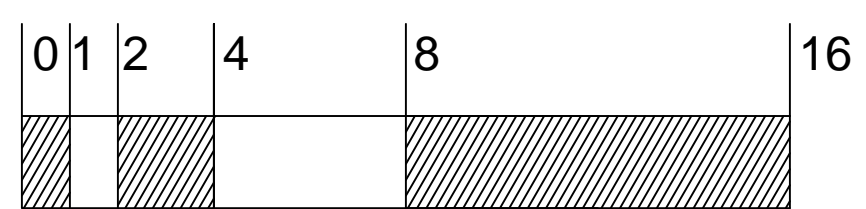
DATE: 06/24/13
 DRAWN: L.K.
 CHECKED BY: K.K.

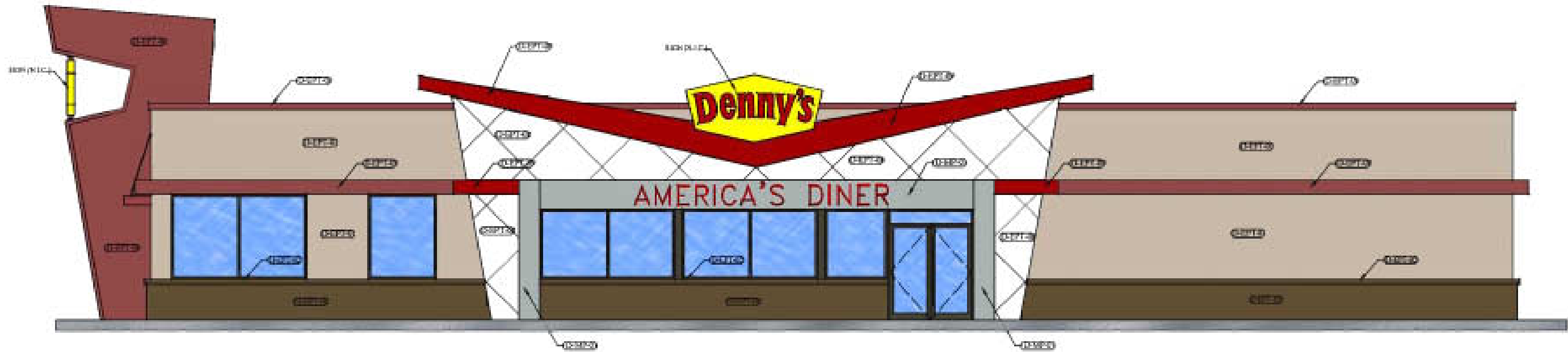
FOOD SERVICE CONCEPTS, INC.
 1101-A WEST MELBOURNE BLVD.
 PUEBLO, WISCONSIN 53072

Denny's
 670 E. I-30
 ROCKWALL, TX 75087

PROPOSED EXT. ELEV.

A2B





EAST ELEVATION
SCALE: 1/8" = 1'-0"



SOUTH ELEVATION
SCALE: 1/8" = 1'-0"

T.O. NEW SIGN ELEMENT 27'-2"

T.O. NEW ENTRY ELEMENT 17'-4"

T.O. NEW PARAPET 16'-0"

T.O. WINDOWS 9'-4"

F.F. 0'-0"

EXTERIOR FINISH LEGEND			
CODE	PRODUCT	VENDORS & SPECIFICATIONS	COLOR
D-EPT-01	EXTERIOR PAINT ACRYLIC (SEMIGLOSS)	SHERWIN WILLIAMS	TUFT TAUPC #SW708
D-EPT-02	EXTERIOR PAINT ACRYLIC (SEMIGLOSS)	SHERWIN WILLIAMS	WELL BREED BROWN #SW717
D-EPT-03	EXTERIOR PAINT ACRYLIC (SEMIGLOSS)	SHERWIN WILLIAMS	COLOR MATCH MANTHULETOWAST #MSL06 8400
D-EPT-04	EXTERIOR PAINT ACRYLIC (SEMIGLOSS)	SHERWIN WILLIAMS	SEALCOP #SW751
D-EPT-05	EXTERIOR PAINT ACRYLIC (SEMIGLOSS)	SHERWIN WILLIAMS	PEARLY WHITE #SW709
D-EPT-06	EXTERIOR PAINT ACRYLIC (SEMIGLOSS)	SHERWIN WILLIAMS	SN DEAL MONDE 11807 RED
D-MP-01	880 ALUMINUM SIGN COVER NO TOOL FINISH		AKZO NOBEL 3122H TITANIUM

NOTE: ALL STORE FRONT TO BE PAINTED D-EPT-04.

NO.	DATE	DESCRIPTION

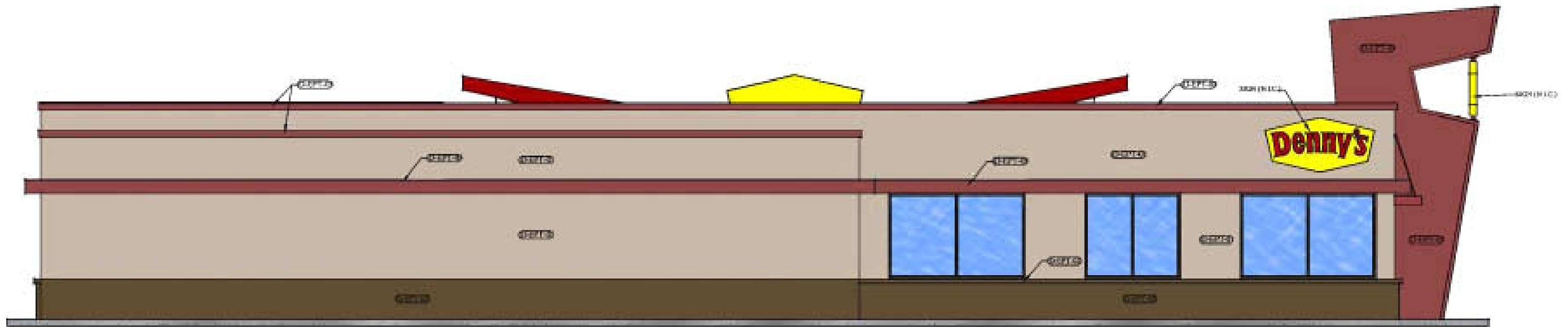
FOOD SERVICE CONCEPTS INC.
1111-A WEST ARLINGTON
FRODO, ARIZONA 85001
O.B. COOKERY
R.K.

Denny's
6700 E. 1-30
ROCKWALL, TX 75087

EXTERIOR ELEV.

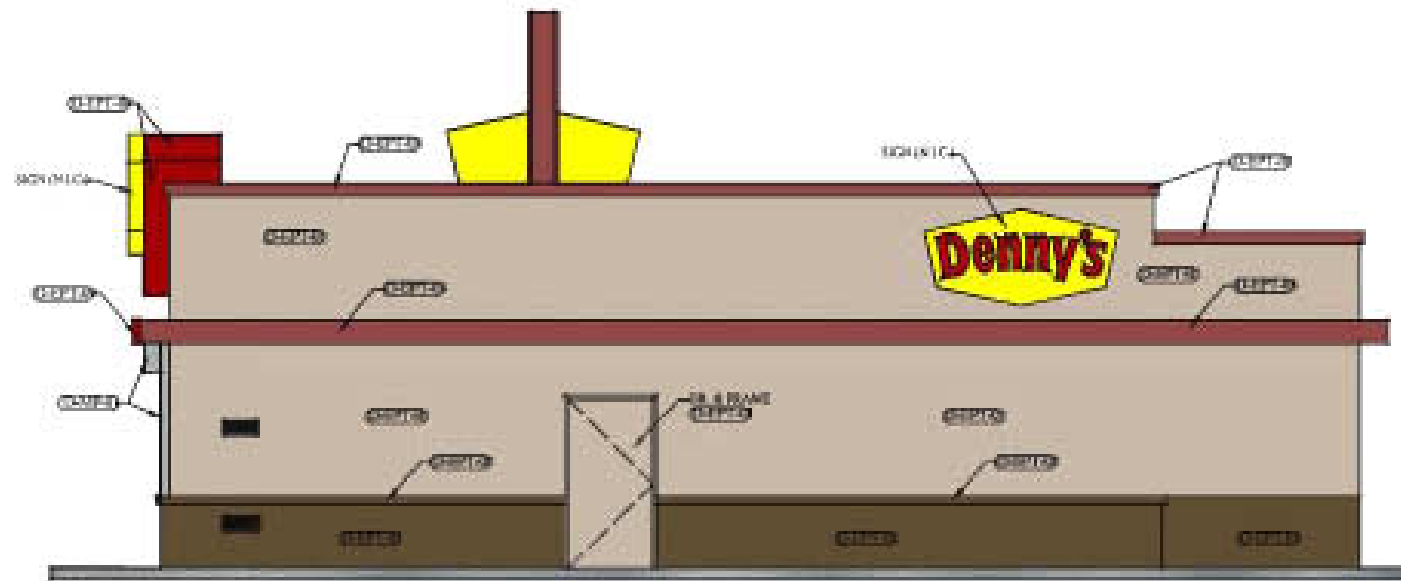
A-2A

1/8" = 1'-0"



WEST ELEVATION

SCALE: 1/8" = 1'-0"



NORTH ELEVATION

SCALE: 1/8" = 1'-0"

◆ T.O. NEW SIGN ELEMENT 23'-2"

◆ T.O. NEW PARAPET 16'-0"

◆ T.O. NEW PARAPET 14'-0"

◆ B.O. POP-OUT 9'-0"

◆ F.F. 0'-0"

EXTERIOR FINISH LEGEND

CODE	PRODUCT	VENDORS & SPECIFICATIONS	COLOR
D-EPT-01	EXTERIOR PAINT ACRYLIC (SEMI GLOSS)	SHERWIN WILLIAMS	TONY TALPE 45W788
D-EPT-02	EXTERIOR PAINT ACRYLIC (SEMI GLOSS)	SHERWIN WILLIAMS	WELL BREED BROWN 45W787
D-EPT-03	EXTERIOR PAINT ACRYLIC (SEMI GLOSS)	SHERWIN WILLIAMS	COLOR MATCH MARTHA STEWART 45W789
D-EPT-04	EXTERIOR PAINT ACRYLIC (SEMI GLOSS)	SHERWIN WILLIAMS	SEALSKIN 45W791
D-EPT-05	EXTERIOR PAINT ACRYLIC (SEMI GLOSS)	SHERWIN WILLIAMS	PEARLY WHITE 45W789
D-EPT-06	EXTERIOR PAINT ACRYLIC (SEMI GLOSS)	SHERWIN WILLIAMS	SN (SN) MONROE 45W788
D-MP-01	080 ALUMINUM SKIN COVER W/ TUCK PAINT		AG20 NOBELIUM TITANIUM

NOTE: ALL STORE FRONT TO BE PAINTED D-EPT-04.

NO.	DATE	REVISIONS

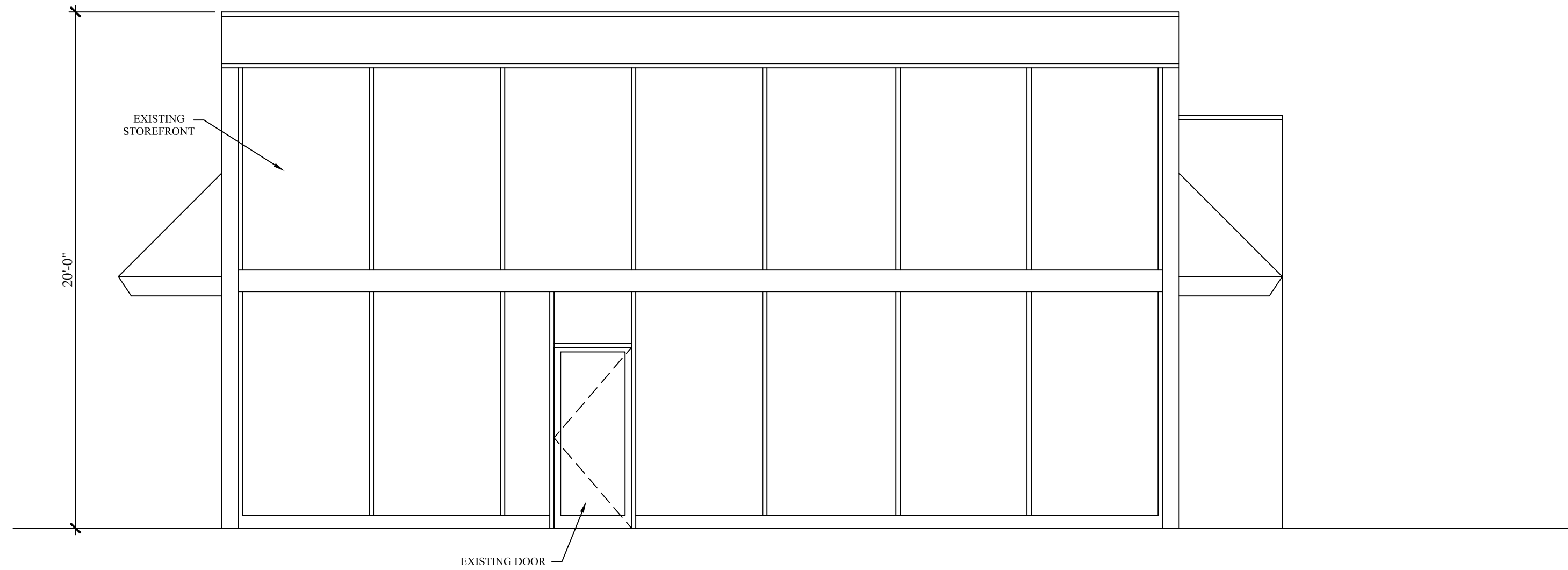
FOOD SERVICE CONCEPTS INC.
 1111-A WEST ARCADE
 FRODOLO, MISSOURI 63021
 O.B. COOKERY
 R.K.

Denny's
 6700 E. I-30
 ROCKWALL, TX 75087

EXTERIOR ELEV.

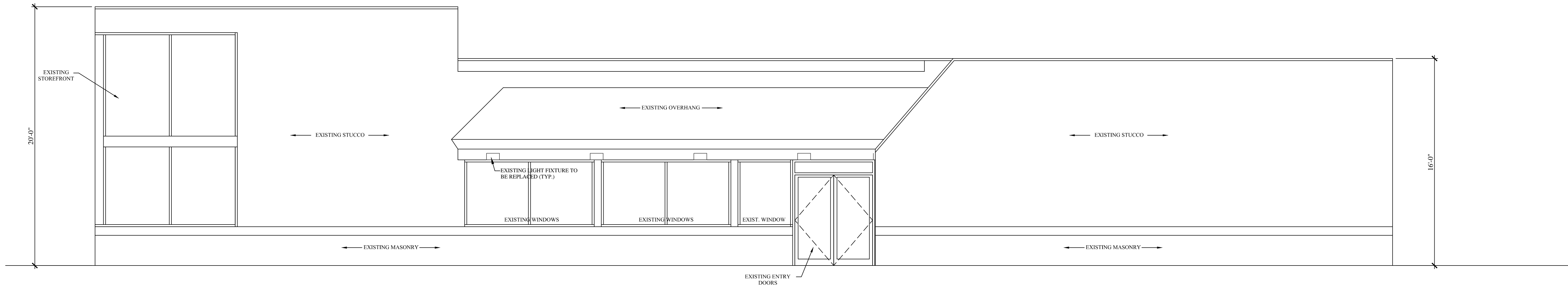
A-2A

1/8" = 1'-0"



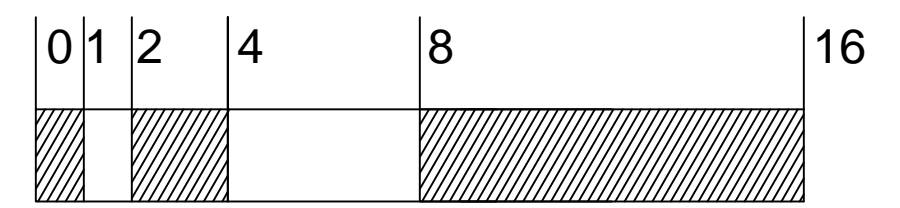
EXISTING SOUTH ELEVATION
SCALE: 1/4" = 1'-0"

FINISH MATERIAL CALCULATIONS:
807 S.F. - 645 S.F. WINDOWS/DOORS
STUCCO: 100% (162 S.F.)



EXISTING EAST ELEVATION
SCALE: 1/4" = 1'-0"

FINISH MATERIAL CALCULATIONS:
1,714 S.F. - 343 S.F. WINDOWS/DOORS
MASONRY: 20% (282 S.F.)
STUCCO: 68% (927 S.F.)
FIBERGLASS SHINGLES: 10% (132 S.F.)
METAL PANEL: 2% (30 S.F.)



GENERAL NOTE:
THIS PLAN IS THE PROPERTY OF FOOD SERVICE CONCEPTS, INC. AND ANY USE OF THIS DRAWING WITHOUT THE WRITTEN PERMISSION OF FOOD SERVICE CONCEPTS, INC. IS PROHIBITED. NO LIABILITY IS ASSUMED BY F.S.C. FOR DAMAGES OF ANY KIND, INCLUDING BUT NOT LIMITED TO, CONSEQUENTIAL DAMAGES.

REVISIONS	
1	
2	
3	
4	
5	
6	
7	
8	
9	
10	
11	
12	

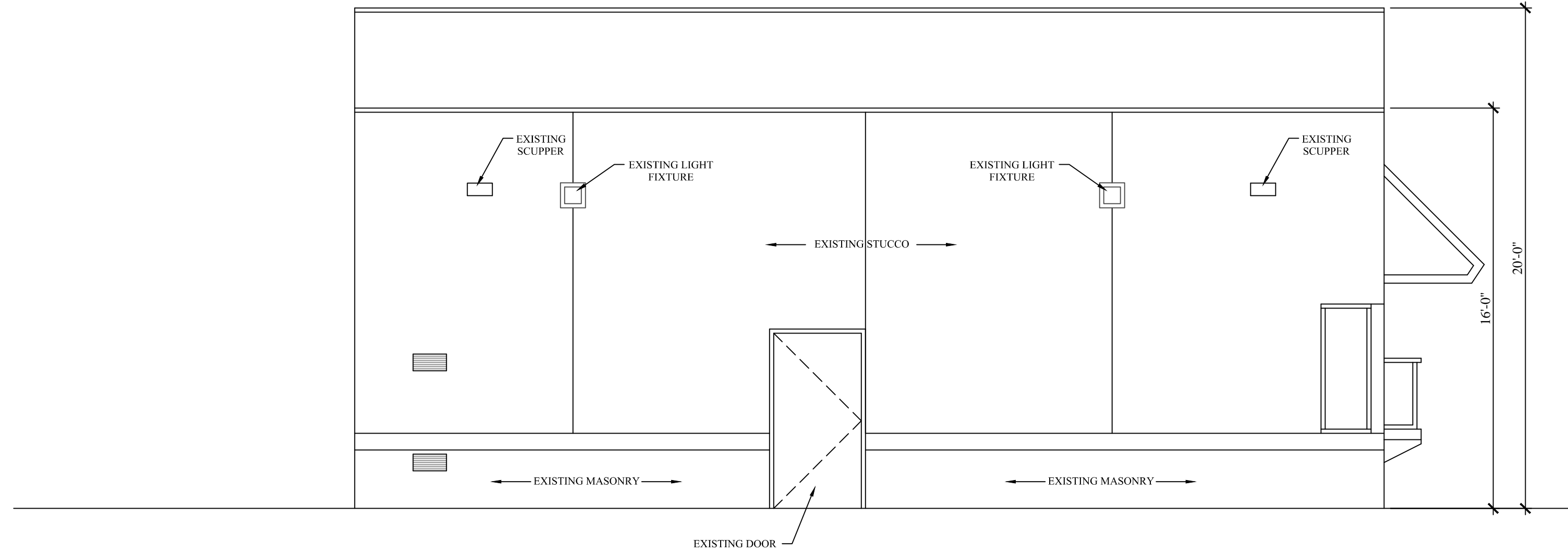
DATE	06/24/13
DRAWN	L.K.
CHECKED BY	K.K.

FOOD SERVICE CONCEPTS, INC.
1101-A WEST MELBOURNE
PUEBLO, WISCONSIN 53072
(623) 492-0077
FAX# (623) 492-0840

Denny's
670 E. I-30
ROCKWALL, TX 75087

EXISTING EXT. ELEV.

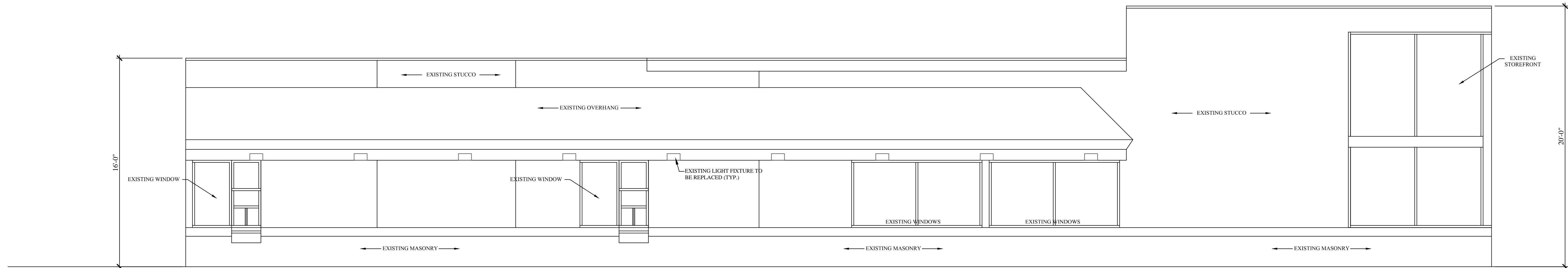
A2A



FINISH MATERIAL CALCULATIONS:
 658 S.F. - 38 S.F. WINDOWS/DOORS
 MASONRY: 18% (112 S.F.)
 STUCCO: 82% (508 S.F.)

EXISTING NORTH ELEVATION

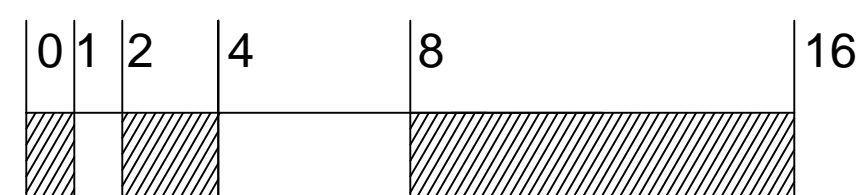
SCALE: 1/4" = 1'-0"



FINISH MATERIAL CALCULATIONS:
 1,714 S.F. - 323 S.F. WINDOWS/DOORS
 MASONRY: 22% (300 S.F.)
 STUCCO: 56% (771 S.F.)
 FIBERGLASS SHINGLES: 20% (283 S.F.)
 METAL PANEL: 2% (37 S.F.)

EXISTING WEST ELEVATION

SCALE: 1/4" = 1'-0"



GENERAL NOTE:
 THIS PLAN IS THE PROPERTY OF FOOD SERVICE CONCEPTS, INC. AND ANY USE OF THIS PLAN WITHOUT THE WRITTEN PERMISSION OF FOOD SERVICE CONCEPTS, INC. IS PROHIBITED. NO ASSURANCE IS MADE BY F.S.C. FOR INFORMATION NOT SHOWN IN DRAWINGS.

REVISIONS	
1	
2	
3	
4	
5	
6	
7	
8	
9	
10	
11	
12	

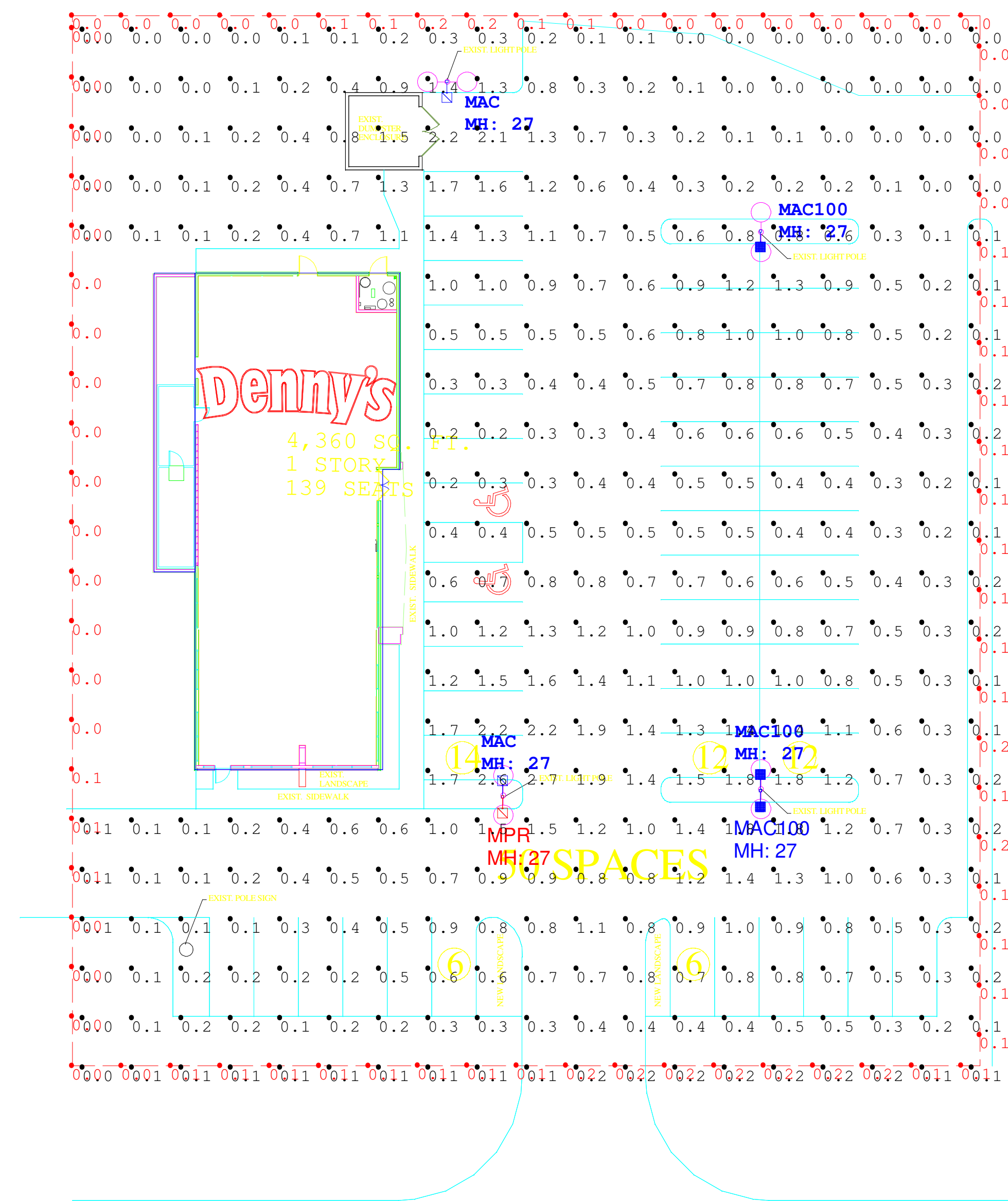
DATE	06/24/13
DRAWN	L.K.
CHECKED BY	K.K.

FOOD SERVICE CONCEPTS, INC.
 101-A WEST MELBOURNE
 BOZEMAN, MONTANA 59717
 (623) 492-0077
 FAX (623) 492-0840

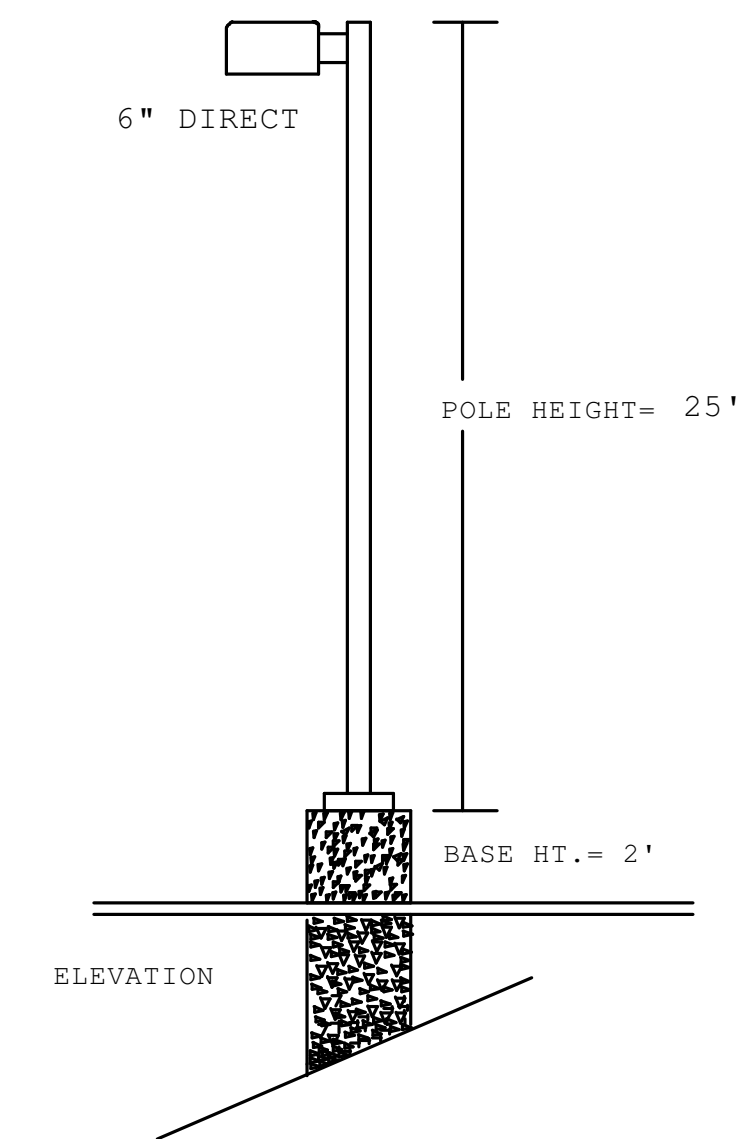
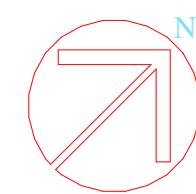
Denny's
 670 E. I-30
 ROCKWALL, TX 75087

EXISTING EXT. ELEV.

A2B



INTERSTATE 30

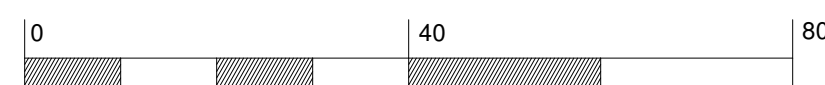


*****EXISTING POLES AND TENONS

ADDITIONAL MATERIAL:
 (2) PT-12(180) TWIN TENON ADAPTOR
 (2) PT-11 SINGLE TENON ADAPTOR
 (6) SBL-12 BACKLIGHT SHIELD

Luminaire Schedule							
Symbol	Qty	Label	Arrangement	LLF	Description	Total Watts	Lumens/Lamp
	1	MPR	SINGLE	0.650	MPR8410-M 100W PSMH SBL-12 BKLT SHLD	126	8100
	2	MAC	SINGLE	0.750	MAC8615-M 150W PSMH SBL-12 BKLT SHLD	370	12600
	3	MAC100	SINGLE	0.650	MAC8410-M 100W PSMH SBL-12 BKLT SHLD	381	8100

Calculation Summary						
Label	Units	Avg	Max	Min	Avg/Min	Max/Min
GRADE	Fc	0.55	2.7	0.0	N.A.	N.A.
PL	Fc	0.07	2.7	0.0	N.A.	N.A.



SPEC #	CATALOG #	DESCRIPTION
CA-1		Cross-Arm Adaptor
MNB-1		Mounting Box
MNB-2		Mounting Box with Stake, Cord & Plug
MNH-2		Conduit Slipfitter
PGM-1		Ground Mount Post

SPEC #	CATALOG #	DESCRIPTION
		6" Arm for 16 or 22" Housing
PT-11		1 Fixture
PT-12(90)		90° Twin
PT-12(180)		180° Twin
PT-13(90)		90° Triple
PT-13(120)		120° Triple
PT-14		90° Quad
NOTE: PT-12(90), PT-13(90) and PT-14(90) can not be used with 22" housing		
		6" Arm for 12" or Rectangular Housing
PT-21		1 Fixture
PT-22(90)		90° Twin
PT-22(180)		180° Twin
PT-24(90)		90° Quad

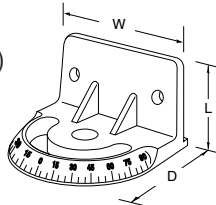
SPEC #	CATALOG #	DESCRIPTION
		12" Arm for 16 or 22" Housing
PT-61		1 Fixture
PT-62(90)		90° Twin
PT-62(180)		180° Twin
PT-63(90)		90° Triple
PT-63(120)		120° Triple
PT-64(90)		90° Quad
		12" Arm for Side Pole Mount
PM-2/12-12		For 12" sq. & 16" Wedge
PM-2/16-12		For 16" sq., 22" Wedge, Square Dome
PM-2/22-12		For 22" sq.

CA-1 CROSS-ARM ADAPTOR

Attaches a fixture with yoke mount bracket to any horizontal mounting surface, such as a wood cross arm or a parapet. Supplied with three 3/8" x 3/4" long stainless-steel screws to mount the bracket to the yoke mount. Use 1/2" bolt or screw to attach to mounting surface. Base is marked to rotate fixture in 10° increments. Colorfast DeltaGuard™ finish supplied with medium bronze, ultra-durable powder topcoat.



Dimensions:
 W = 4.3" (108 mm)
 L = 2.7" (68 mm)
 D = 4.3" (108 mm)



MNH-2 CONDUIT SLIPFITTER

Cast aluminum hub provides a threaded entry for the 1/2" adjustable fitter, and slips over a 2-3/8" (60 mm) O.D. pipe or tenon. A 3/8" allen-head set screw is provided to secure the slipfitter. Colorfast DeltaGuard finish supplied with medium bronze, ultra-durable powder topcoat.



PGM-1 GROUND MOUNT POST

Use with 2" Adjustable Fitter for ground mounted floodlight fixtures. Wiring or conduit feeds through post base.



Dimensions:
 Overall: 24"H (610 mm)
 Tube: 18"H x 2.4"D (457 x 60 mm)
 Base: 4.9"W x 6.3"L (124 x 159 mm)

MNB-1 MOUNTING BOX

Cast aluminum box provides an enclosed wiring chamber to mount a fixture with the 1/2" adjustable fitter. Four threaded knockouts are provided for 1/2" conduit entry, one on the top, back and on either side. Supplied with a gasket at the cover to ensure a watertight seal. Three screws are provided to secure the cover, and a ground screw is provided inside the box. Colorfast DeltaGuard finish supplied with medium bronze, ultra-durable powder topcoat.



Dimensions:
 L = 2.5" (64 mm)
 W = 3.8" (95 mm)
 D = 2.5" (64 mm)

MNB-2 MOUNTING BOX WITH STAKE, CORD & PLUG

Same construction as the MNB-1 Mounting Box, but with a 6.5" (165 mm) long aluminum stake for ground mounting. A gasketed, 10' (3 m) cord is supplied with a 120V straight blade plug. Colorfast DeltaGuard finish supplied with medium bronze, ultra-durable powder topcoat.



Dimensions:
 L = 2.5" (64 mm)
 W = 3.8" (95 mm)
 D = 2.5" (64 mm)

Stake Dimension:
 6.5" (165 mm) long

PT* TENON ADAPTOR

The Tenon Adaptor supports single or multiple outdoor fixtures using a 6.1" (155 mm) or 12.1" (308 mm) long horizontal arm. This arm mounts to a round hub that slip-fits over a tenon or pole ranging in size from 2-3/8" to 3" O.D. The cast aluminum hub is provided with eight allen set screws. Order the fixture "without arm" (mounting code "8") and specify the Tenon Adaptor configuration according to description.



TENON ADAPTOR PHOTOCCELL

A factory-installed photocell option is available (not available with the PT-14 or PT-64 Tenon Adaptor, or for fixtures with 480V ballast or 1000W-120V ballast). Add the suffix "P" to Tenon Adaptor catalog number and specify fixture voltage (27, 1, 2, 3, 4 or 6) at time of order.

SPEC #	CATALOG #	DESCRIPTION
	PW-1A3(a)	Mid-Pole Bracket for one fixture
	PW-2A3(a)	Mid-Pole Bracket for two fixtures

Specify (a) Pole Size.

SPEC #	CATALOG #	DESCRIPTION
	PWY-1	Wood Pole Mounting Bracket
	WM-1	Wall Mount Bracket
	WM-2	Mounting Bracket
	WM-3	Wall Mount Plate
	WM-4	"Elbow" Wall Mount Bracket

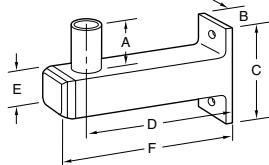
(a) POLE SIZE	
3	3" Pole
4	4" Pole
5	5" Pole
6	6" Pole

PW-1A3(a), PW-2A3(a) MID-POLE BRACKET

Allows mounting of a fixture with 2" adjustable fitter to the side of a square pole. 3" (76 mm) square structural tubing is welded to steel mounting plate. Secures to pole with 1/2" black stainless-steel bolts. Provides a 2-3/8" (60 mm) O.D. tenon for mounting of fixture. A friction fit steel end cap is provided to enclose wiring chamber. Specify configuration as follows: PW-1A3(a) for one bracket, PW-2A3(a) for two brackets mounted on either side of pole, 180° to each other. Colorfast DeltaGuard™ finish supplied with medium bronze, ultra-durable powder topcoat. (Specify (a) pole size — 3", 4", 5", or 6")



Dimensions:
 A = 3.8" (95 mm) D = 9" (229 mm)
 B = 3.0" (76 mm) E = 3.0" (76 mm)
 C = 6.5" (165 mm) F = 11" (280 mm)

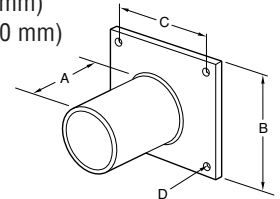


WM-2 MOUNTING BRACKET

0.25" (6 mm) thick steel backplate provides wiring access. Built-in 2-3/8" (60 mm) O.D. steel tenon for mounting fixtures with adjustable fitter to ground, rooftop, wall or to the side of a wood pole. Colorfast DeltaGuard finish supplied with medium bronze, ultra-durable powder topcoat.



Dimensions:
 A = 3.8" (95 mm)
 B = 4" (102 mm)
 C = 3.3" (83 mm)
 D = 0.406 (10 mm)

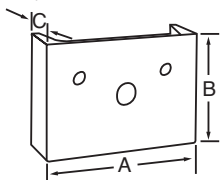


PWY-1 WOOD POLE MOUNTING BRACKET

Structural steel bracket attaches to yoke mount with supplied hardware and to pole with 5/8" thru bolt or threaded rod (supplied by others). 6 to 12" (152 to 305 mm) diameter round wood poles.



Dimensions:
 A = 5" (127 mm)
 B = 3.5" (89 mm)
 C = 1.75" (44 mm)



WM-3 WALL MOUNT BRACKET

0.25" (6 mm) thick aluminum plate. Used for mounting a fixture with direct mount arm to a wall or wood pole. Wiring access provided. When using WM-3 with Fixed 20° Mount, consult factory. We recommend 3/8" fasteners to mount bracket to wall. Colorfast DeltaGuard finish supplied with medium bronze, ultra-durable powder topcoat.



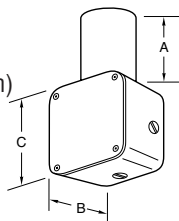
Dimensions:
 4.8" (121 mm) x 0.25" (6 mm) thick

WM-1 WALL MOUNT BRACKET

Cast aluminum bracket allows mounting of fixtures with 2" adjustable fitter to wall or the side of a wood pole. Provides four threaded and closed 1/2" conduit entries for areas where surface wiring is required, and a built-in 2-3/8" (60 mm) O.D. tenon to mount outdoor fixtures with adjustable fitter. Colorfast DeltaGuard finish supplied with medium bronze, ultra-durable powder topcoat.



Dimensions:
 A = 3.5" (89 mm)
 B = 3.0" (76 mm)
 C = 4" (102 mm)

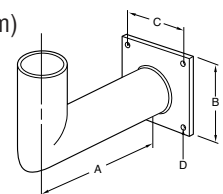


WM-4 "ELBOW" WALL MOUNT BRACKET

0.25" (6 mm) thick steel backplate provides wiring access. Built-in 2-3/8" (60 mm) O.D. elbow tenon for mounting fixtures with adjustable fitter to wall or to the side of a wood pole. Colorfast DeltaGuard finish supplied with medium bronze, ultra-durable powder topcoat.



Dimensions:
 A = 8" (203 mm)
 B = 4" (102 mm)
 C = 3.3" (83 mm)
 D = ø0.406 (10 mm)



SPEC #	CATALOG #	DESCRIPTION
--------	-----------	-------------

WM-5		Wall Mount Box
------	--	----------------

WM-5 WALL MOUNT BOX

The hinge feature on the fixture mounting plate allows for hands-free suspension of the fixture for easy access to wiring then swings down and secures in place with one fastener. Includes specially designed wall mount plate for easy installation and through wiring. Intended for installation over junction boxes up to and including four-inch square or octagonal and single-gang J boxes. Knockouts are available at top, sides and rear to feed 1/2" rigid conduit or EMT. Gasketing at mounting provides a watertight seal. Use with any Area Light up to and including 400-watt.



Dimensions:

W = 8.25" (210 mm)

L = 8.25" (210 mm)

D = 2.5" (64 mm)