

PARKING REQUIRED
 RESTAURANT - 1 SPACE PER 100 SF FLOOR SPACE
 RETAIL - 1 SPACE PER 250 SF FLOOR SPACE

DUNKIN DONUTS = 2094 SF/100 SF = 20.94 SPACES
 OTHER RETAIL = 4961 SF/250 SF = 19.84 SPACES
 PARKING REQUIRED = 41 SPACES

PARKING PROVIDED
 TOTAL PARKING = 46 SPACES

SITE DATA
 TOTAL SITE SIZE = 40,696 SF OR 0.9343 ACRES
 TOTAL BUILDING AREA = 7087 SF
 DUNKIN DONUTS AREA = 2094 SF
 OTHER RETAIL AREA = 4961 SF
 TOTAL IMPERVIOUS AREA = 31,423 SF OR 0.721 ACRES
 TOTAL LANDSCAPE / OPEN AREA = 9273 SF OR 0.213 ACRES
 PERCENT IMPERVIOUS = 77.21%
 PERCENT LANDSCAPE / OPEN AREA = 22.79%

LANDSCAPE
 TOTAL REQUIRED IS 15%
 TOTAL PROVIDED IS ±23%
 REQUIRED LANDSCAPE BUFFER = 20' WIDE ON RIDGE ROAD
 REQUIRED LANDSCAPE BUFFER = 10' WIDE ON SUMMER LEE DR.

- NOTE:**
- ALL SIGNS (MONUMENT AND CIRCULATION) WILL BE PERMITTED SEPARATELY.
 - DETENTION WILL BE FULLY ADDRESSED DURING THE CIVIL DESIGN PHASE OF THE PROJECT. WE ANTICIPATE UNDERGROUND DETENTION AND PREDICT IT WILL BE DERIVED PRIMARILY FROM OVERSIZED DRAINAGE PIPE AND "EXTRA" PIPE TO ACHIEVE NEEDED CAPACITY. DISCHARGE OF DETENTION WILL BE LOCATED NEAR THE NORTHEAST CORNER OF THE PROPERTY INTO THE PROPOSED DRAINAGE EASEMENT.

LEGEND

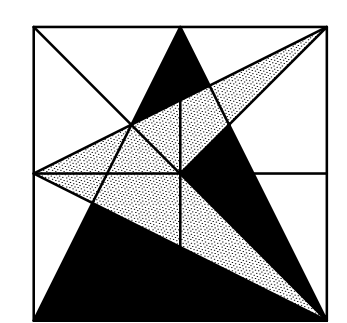
---	PROPERTY BOUNDARY
- - - - -	BUILDING SETBACK LINE
FL - FL - FL	PROPOSED FIRE LANE
WB - WB - WB	PROPOSED 8" WATER LINE
W6 - W6 - W6	PROPOSED 6" WATER LINE
W2 - W2 - W2	PROPOSED 2" WATER LINE
S8 - S8 - S8	PROPOSED 8" SEWER LINE
S6 - S6 - S6	PROPOSED 6" SEWER LINE
- - - - -	PROPOSED EASEMENT LINE
	CROSSWALK
	HEAVY DUTY CONCRETE
	LANDSCAPE BUFFER
	PARKING COUNT
- - - - -	EXISTING CONTOURS

REVISIONS

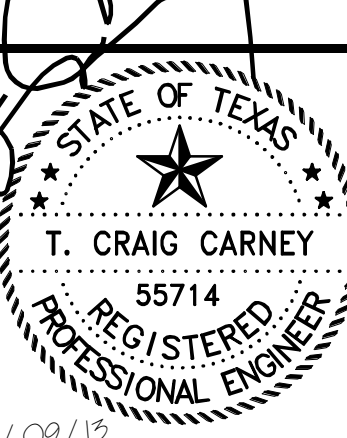
#1	6/14/13	ISSUE FOR REVIEW
#2	6/20/13	REVISE PARKING ADD DUMPSTER
#3	7/02/13	REVISIONS PER CITY COMMENTS
#4	7/09/13	REVISIONS PER CITY COMMENTS

DUNKIN' DONUTS & RETAIL SPACE
RIDGE ROAD & SUMMER LEE DR.
ROCKWALL, TEXAS

SITE PLAN



CARNEY ENGINEERING COMPANY
 4588 Hinton Dr.
 Plano, Texas 75024
 (469) 443-0861
 FAX (469) 443-0863

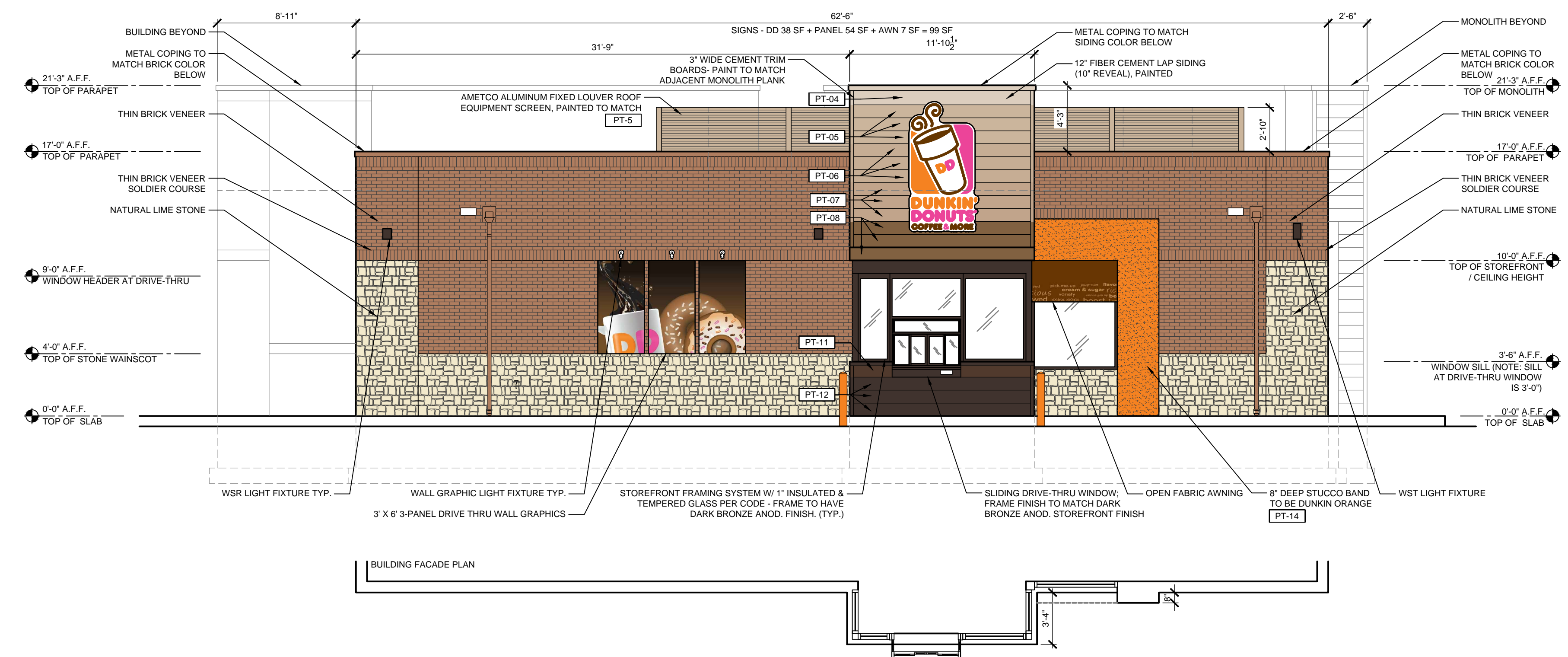


7/09/13
 TBE FIRM REGISTRATION NO. F-5033
 DRAWN BY: GWM
 CHECKED BY: TCC
 START DATE: JUNE 2013
 SCALE: 1" = 20'
 PROJECT NO.: 24437-1015

CASE NUMBER - SP2013-012
 SUP CASE NUMBER - Z2013-017

C-101

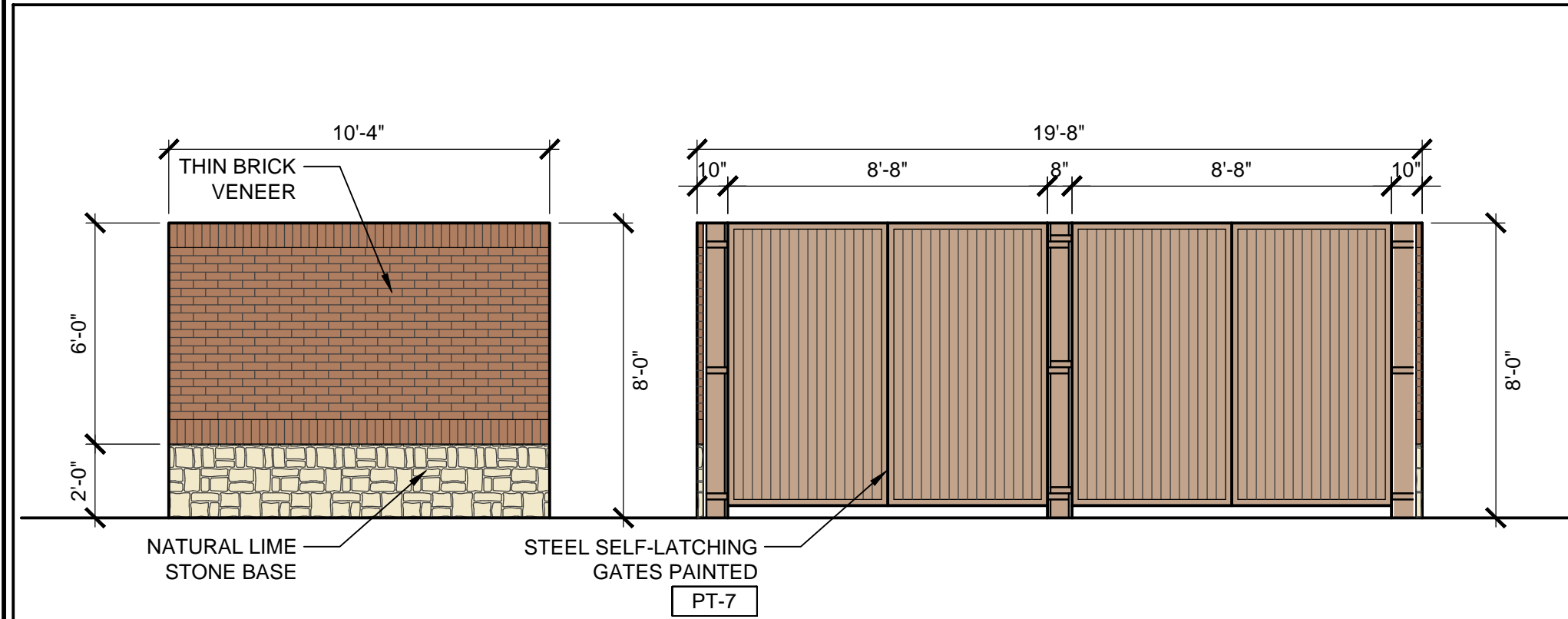
EXTERIOR WALL AREA CALCS				EXTERIOR WALL ARTICULATION CALCS				WALL SIGN AREA CALCS				
WALL MATERIAL	WALL AREA	MATERIAL %	ALLOWED %	WALL HEIGHT	MAX. LENGTH	MIN. HORZ. WALL OFFSET	MIN. VERT. WALL OFFSET	MIN. OFFSET LGT.	TENANT SPACE	TENANT WALL AREA	SIGN ALLOWED MAX. 10%	SIGN PROPOSED
MASONRY 1 - NATURAL STONE	238 SQ. FT.	23	20 MIN.	17'-0"	3 X 17'-0" = 51'-0"	25 X 17'-0" = 4-3"	25 X 17'-0" = 4-3"	25 X 51'-0" = 12'-9"	TENANT 1 - DUNKIN DONUTS	1,113 SQ. FT.	111 SQ. FT.	99 SQ. FT.
MASONRY 2 - THIN BRICK	542 SQ. FT.	55	80 MAX.									
MASONRY 3 - CEMENT SIDING	169 SQ. FT.	17	50 MAX.									
MASONRY 4 - STUCCO	48 SQ. FT.	5	INCL. W/ ABOVE									
ACCENT 1 -	0	0	10 MAX.									
TOTAL	994 SQ. FT.	100										



1 LEFT ELEVATION
3/16" = 1'-0" NOTE:

EXTERIOR FINISH MATERIAL SCHEDULE:

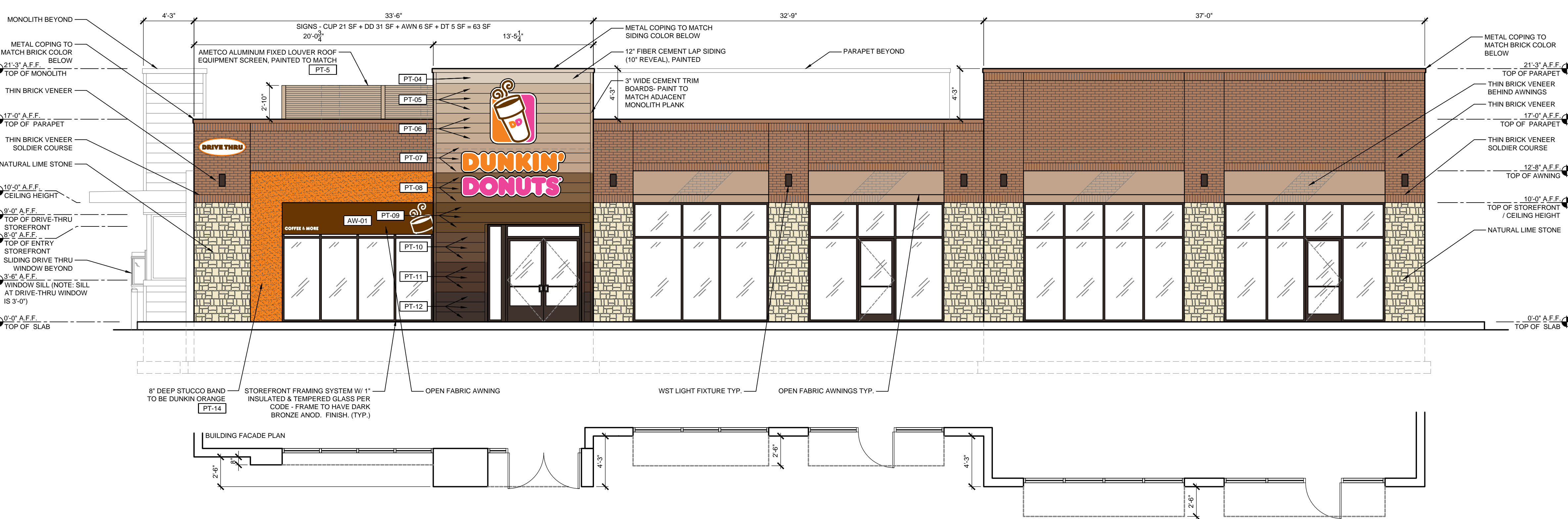
CODE	MATERIAL	MANUFACTURER	PRODUCT #	DESCRIPTION	REMARKS
AW-01	AWNING	ARLON	DD FRESH BREW AWNING	BROWN AWNING WITH FRESH BREW MESSAGING	STANDARD AWNING FOR FRESH BREW DESIGNS W/ ORANGE BAND
BC-1	BOLLARD COVERS	IDEAL SHIELD	BC1-CC-4-52-S	4"W X 52"H ORANGE BOLLARD SLEEVE	
BR-01	BRICK	ENDICOTT	DESERT IRONSPOT DARK	VELOUR MODULAR THIN BRICK	
ST-01	STONE			NATURAL LIME STONE - CREAM COLOR	
PT-01	PAINT	SHERWIN WILLIAMS	6372	"INVITING IVORY"	SATIN
PT-02	PAINT	SHERWIN WILLIAMS	6884	"OBSTINATE ORANGE"	SATIN
PT-03	PAINT	SHERWIN WILLIAMS	6140	"MODERATE WHITE"	SATIN
PT-04	PAINT	SHERWIN WILLIAMS	7517	"CHINA DOLL"	SATIN
PT-05	PAINT	SHERWIN WILLIAMS	7536	"BITTERSWEET STEM"	SATIN
PT-06	PAINT	SHERWIN WILLIAMS	6100	"PRACTICAL BEIGE"	SATIN
PT-07	PAINT	SHERWIN WILLIAMS	7714	"OAK BARREL"	SATIN
PT-08	PAINT	SHERWIN WILLIAMS	6096	"JUTE BROWN"	SATIN
PT-09	PAINT	SHERWIN WILLIAMS	6097	"STURDY BROWN"	SATIN
PT-10	PAINT	SHERWIN WILLIAMS	6090	"JAVA"	SATIN
PT-11	PAINT	SHERWIN WILLIAMS	6069	"FRENCH ROAST"	SATIN
PT-12	PAINT	SHERWIN WILLIAMS	6009	"BLACK BEAN"	SATIN
PT-13	PAINT	SHERWIN WILLIAMS	7006	"EXTRA WHITE"	SATIN (COMBO - BR FIELD)
PT-14	PAINT	SHERWIN WILLIAMS		MATCH DD ORANGE PMS 165C	SATIN



3 DUMPSTER ENCLOSURE
1/4" = 1'-0" NOTE:

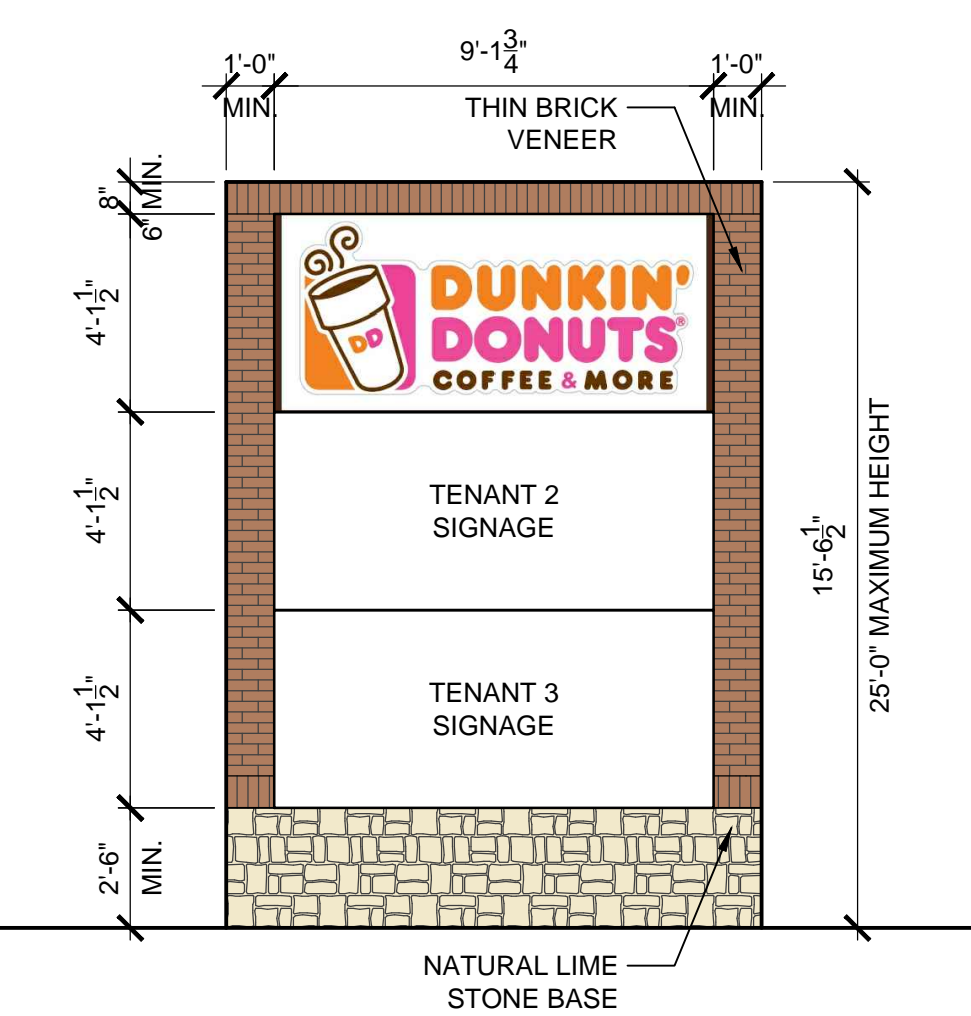
EXTERIOR WALL AREA CALCS				EXTERIOR WALL ARTICULATION CALCS				WALL SIGN AREA CALCS				
WALL MATERIAL	WALL AREA	MATERIAL %	ALLOWED %	WALL HEIGHT	MAX. LENGTH	MIN. HORZ. WALL OFFSET	MIN. VERT. WALL OFFSET	MIN. OFFSET LGT.	TENANT SPACE	TENANT WALL AREA	SIGN ALLOWED MAX. 10%	SIGN PROPOSED
MASONRY 1 - NATURAL STONE	281 SQ. FT.	20	20 MIN.	17'-0"	3 X 17'-0" = 51'-0"	25 X 17'-0" = 4-3"	25 X 17'-0" = 4-3"	25 X 51'-0" = 12'-9"	TENANT 1 - DUNKIN DONUTS	627 SQ. FT.	63 SQ. FT.	63 SQ. FT.
MASONRY 2 - THIN BRICK	741 SQ. FT.	58	80 MAX.									
MASONRY 3 - CEMENT SIDING	221 SQ. FT.	17	50 MAX.									
MASONRY 4 - STUCCO	68 SQ. FT.	5	INCL. W/ ABOVE									
ACCENT 1 -	0	0	10 MAX.									
TOTAL	1,281 SQ. FT.	100										

DIRECTIONAL SIGN AREA CALCS			
TENANT SPACE	SIGN ALLOWED MAX.	SIGN PROPOSED	
TENANT 1 - DUNKIN DONUTS	40 SQ. FT. MAX.	40 SQ. FT.	
TENANT 2	FOR ANY ONE	40 SQ. FT.	
TENANT 3	TENANT	40 SQ. FT.	
TOTAL SIGN AREA	200 SQ. FT.	120 SQ. FT.	



2 FRONT ELEVATION
3/16" = 1'-0" NOTE:

DIRECTIONAL SIGN AREA CALCS			
TENANT SPACE	SIGN ALLOWED MAX.	SIGN PROPOSED	
TENANT 1 - DUNKIN DONUTS	40 SQ. FT. MAX.	40 SQ. FT.	
TENANT 2	FOR ANY ONE	40 SQ. FT.	
TENANT 3	TENANT	40 SQ. FT.	
TOTAL SIGN AREA	200 SQ. FT.	120 SQ. FT.	



4 MONUMENT SIGN
1/4" = 1'-0" NOTE:

THESE PLANS ARE CONFIDENTIAL PROPERTY OF DUNKIN' BRANDS, INC., UNDER RESTRICTED ACCESS.

POEM
DEVELOPMENT SERVICES, INC.
3245 MAIN STREET, SUITE 235-303
FRISCO, TX 75034, 214-695-0290

NO	DESCRIPTION	DATE	SCALE	DRAWN	CKD	APPD
1	P&Z COMMENTS	7-1-13				

RIDGE RD. AND SUMMER LEE DR.
ROCKWALL, TEXAS 75032

EXTERIOR ELEVATIONS AND FINISH SCHEDULE

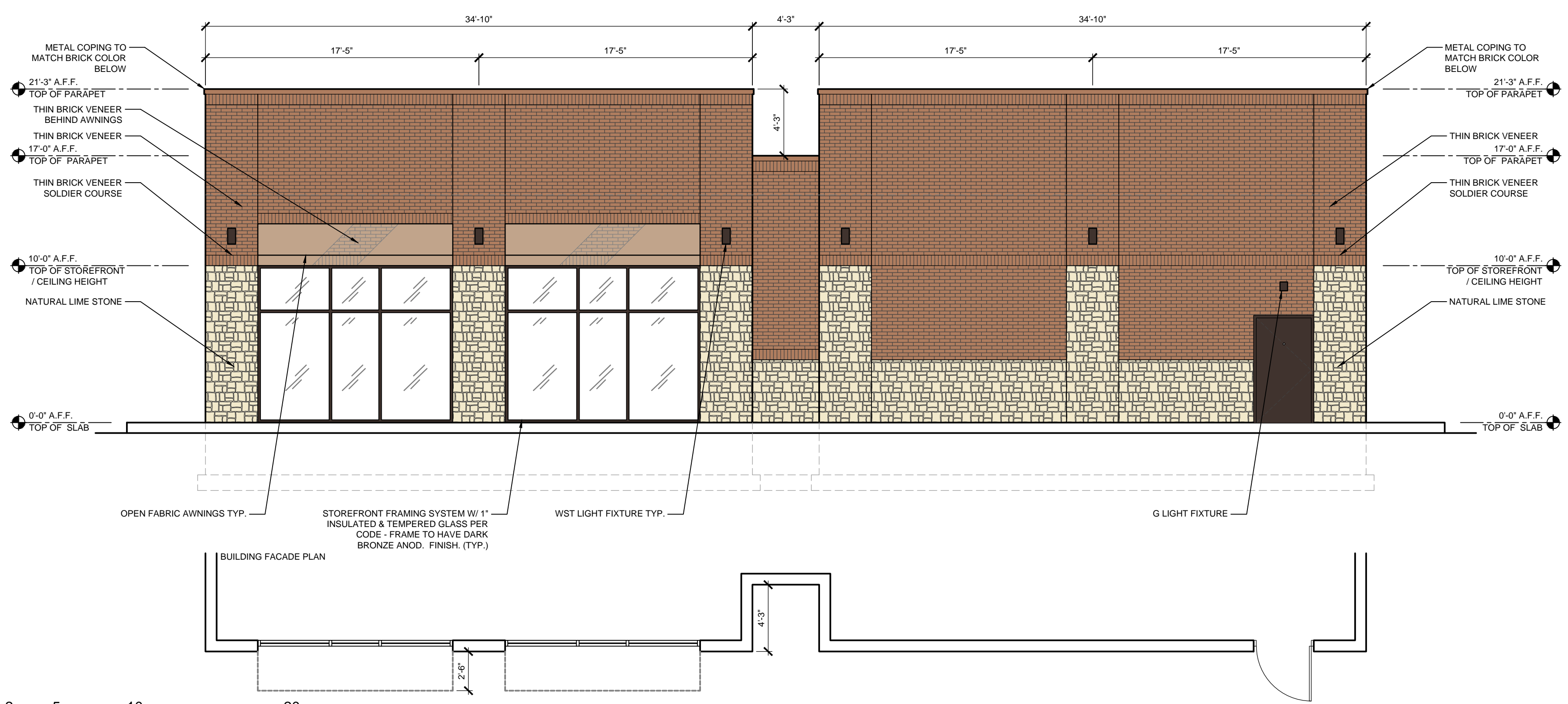
PC NUMBER

NOTE: DRAWINGS ARE NOT TO SCALE IF SHEET IS PLOTTED ON 11" x 17"

EXTERIOR WALL AREA CALCS				EXTERIOR WALL ARTICULATION CALCS				WALL SIGN AREA CALCS				
WALL MATERIAL	MATERIAL WALL AREA	MATERIAL %	ALLOWED %	WALL HEIGHT	MAX. LENGTH 3 X HGT	MIN. HORIZ. WALL OFFSET 25 X HGT	MIN. VERT. WALL OFFSET 25 X HGT	MIN. OFFSET LGT. 25 X MAX. LGT.	TENANT SPACE	TENANT WALL AREA	SIGN ALLOWED MAX. 10%	SIGN PROPOSED
MASONRY 1 - NATURAL STONE	301 SQ. FT.	24	20 MIN.	17'-0"	3 X 17'-0" = 51'-0"	25 X 17'-0" = 4'-3"	25 X 17'-0" = 4'-3"	25 X 51'-0" = 12'-9"	TENANT 3	1,553 SQ. FT.	155 SQ. FT.	TBD
MASONRY 2 - THIN BRICK	977 SQ. FT.	76	80 MAX.						TOTAL WALL AREA	1,553 SQ. FT.	155 SQ. FT.	TBD
MASONRY 3 - CEMENT SIDING	0 SQ. FT.	0	50 MAX.									
MASONRY 4 - STUCCO	0 SQ. FT.	0	INCL. W/ ABOVE									
ACCENT 1 -	0 SQ. FT.	0	10 MAX.									
TOTAL	1,278 SQ. FT.	100										

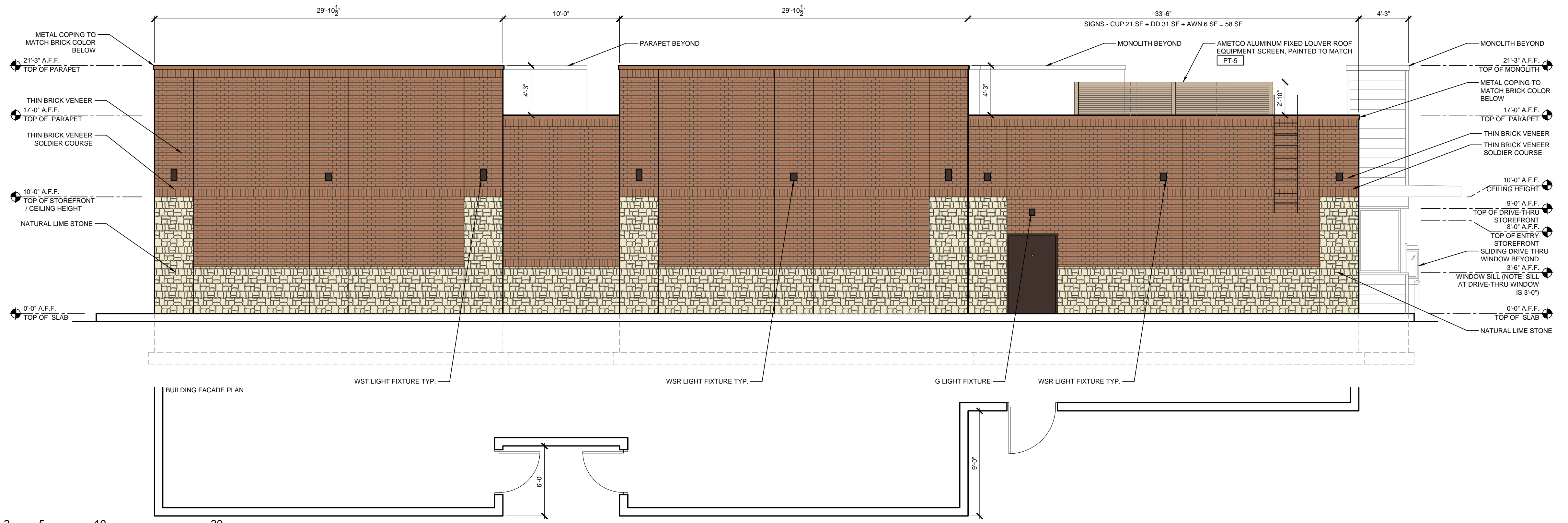
EXTERIOR FINISH MATERIAL SCHEDULE:

CODE	MATERIAL	MANUFACTURER	PRODUCT #	DESCRIPTION	REMARKS
AW-01	AWNING	ARLON	DD FRESH BREW AWNING	BROWN AWNING WITH FRESH BREW MESSAGING	STANDARD AWNING FOR FRESH BREW DESIGNS W/ ORANGE BAND
BC-1	BOLLARD COVERS	IDEAL SHIELD	BC1-CC-4-52-S	4"W X 52"H ORANGE BOLLARD SLEEVE	
BR-01	BRICK	ENDICOTT	DESERT IRONSPOT DARK	VELOUR MODULAR THIN BRICK	
ST-01	STONE			NATURAL LIME STONE - CREAM COLOR	
PT-01	PAINT	SHERWIN WILLIAMS	6372	"INVITING IVORY"	SATIN
PT-02	PAINT	SHERWIN WILLIAMS	6884	"OBSTINATE ORANGE"	SATIN
PT-03	PAINT	SHERWIN WILLIAMS	6140	"MODERATE WHITE"	SATIN
PT-04	PAINT	SHERWIN WILLIAMS	7517	"CHINA DOLL"	SATIN
PT-05	PAINT	SHERWIN WILLIAMS	7536	"BITTERSWEET STEM"	SATIN
PT-06	PAINT	SHERWIN WILLIAMS	6100	"PRACTICAL BEIGE"	SATIN
PT-07	PAINT	SHERWIN WILLIAMS	7714	"OAK BARREL"	SATIN
PT-08	PAINT	SHERWIN WILLIAMS	6096	"JUTE BROWN"	SATIN
PT-09	PAINT	SHERWIN WILLIAMS	6097	"STURDY BROWN"	SATIN
PT-10	PAINT	SHERWIN WILLIAMS	6090	"JAVA"	SATIN
PT-11	PAINT	SHERWIN WILLIAMS	6069	"FRENCH ROAST"	SATIN
PT-12	PAINT	SHERWIN WILLIAMS	6009	"BLACK BEAN"	SATIN
PT-13	PAINT	SHERWIN WILLIAMS	7006	"EXTRA WHITE"	SATIN (COMBO - BR FIELD)
PT-14	PAINT	SHERWIN WILLIAMS		MATCH DD ORANGE PMS 165C	SATIN

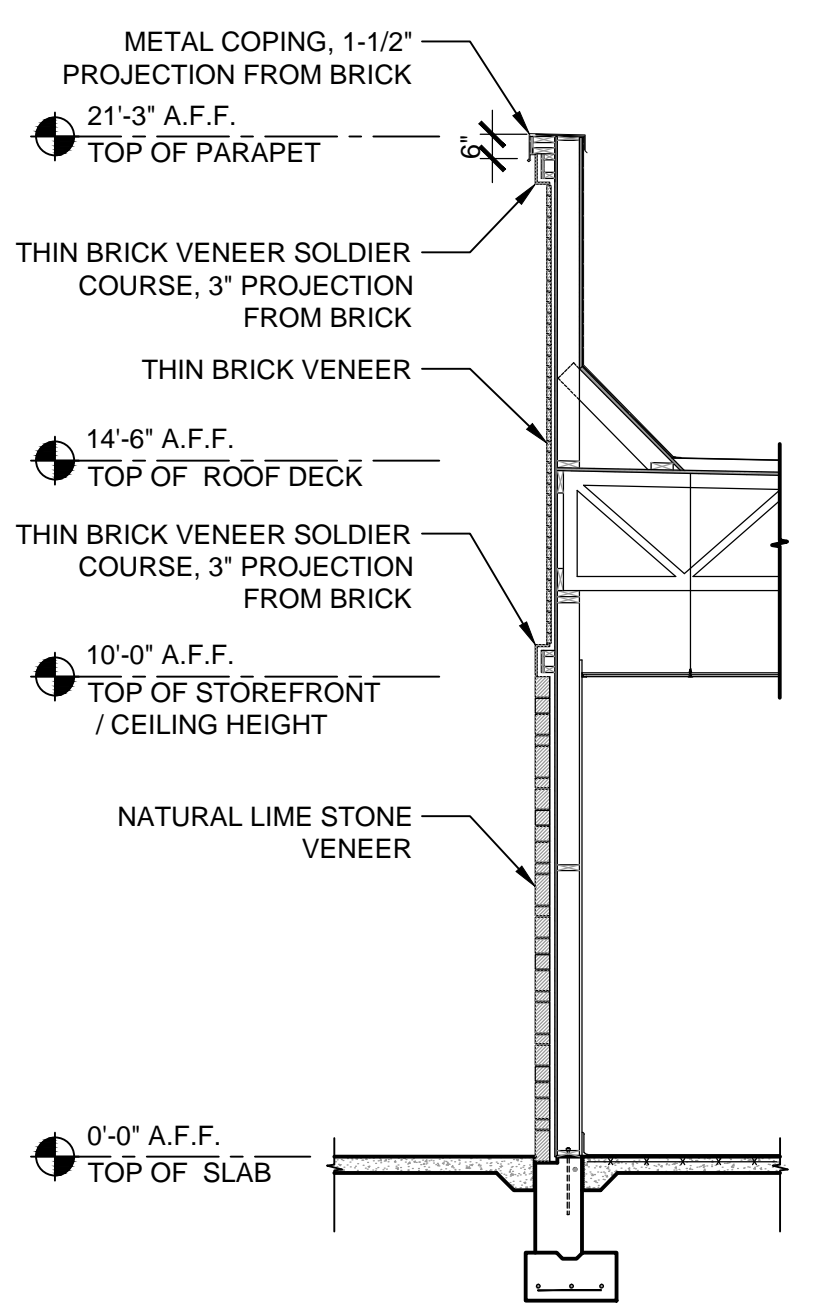


1 RIGHT ELEVATION
3/16" = 1'-0" NOTE:

EXTERIOR WALL AREA CALCS				EXTERIOR WALL ARTICULATION CALCS				WALL SIGN AREA CALCS				
WALL MATERIAL	MATERIAL WALL AREA	MATERIAL %	ALLOWED %	WALL HEIGHT	MAX. LENGTH 3 X HGT	MIN. HORIZ. WALL OFFSET 25 X HGT	MIN. VERT. WALL OFFSET 25 X HGT	MIN. OFFSET LGT. 25 X MAX. LGT.	TENANT SPACE	TENANT WALL AREA	SIGN ALLOWED NONE	SIGN PROPOSED
MASONRY 1 - NATURAL STONE	516 SQ. FT.	26	20 MIN.	17'-0"	3 X 17'-0" = 51'-0"	25 X 17'-0" = 4'-3"	25 X 17'-0" = 4'-3"	25 X 51'-0" = 12'-9"	TENANT 1 - DUNKIN DONUTS	570 SQ. FT.	0 SQ. FT.	NA
MASONRY 2 - THIN BRICK	1,468 SQ. FT.	74	80 MAX.						TENANT 2	720 SQ. FT.	0 SQ. FT.	NA
MASONRY 3 - CEMENT SIDING	0 SQ. FT.	0	50 MAX.						TENANT 3	720 SQ. FT.	0 SQ. FT.	NA
MASONRY 4 - STUCCO	0 SQ. FT.	0	INCL. W/ ABOVE						TOTAL WALL AREA	2,010 SQ. FT.	0 SQ. FT.	NA
ACCENT 1 -	0 SQ. FT.	0	10 MAX.									
TOTAL	1,980 SQ. FT.	100										



2 REAR ELEVATION
3/16" = 1'-0" NOTE:



3 TYPICAL WALL SECTION
1/4" = 1'-0" NOTE:

THESE PLANS ARE CONFIDENTIAL PROPERTY OF DUNKIN' BRANDS, INC., UNDER RESTRICTED ACCESS.

POEM C
DEVELOPMENT SERVICES, INC.
3245 MAIN STREET, SUITE 235-303
FRISCO, TX 75034, 214-695-0290

NO	DESCRIPTION	DATE	SCALE	DRAWN	CKD	APPD
1	P&Z COMMENTS	7-1-13				

NO	DESCRIPTION	DATE
1	P&Z COMMENTS	7-1-13

RIDGE RD. AND SUMMER LEE DR.
ROCKWALL, TEXAS 75032

EXTERIOR ELEVATIONS AND FINISH SCHEDULE

PC NUMBER

A-6

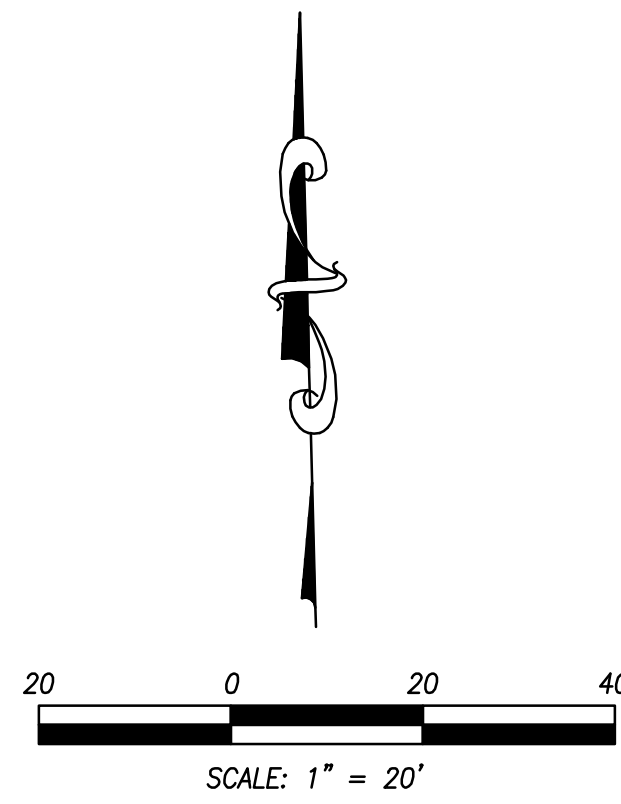
CASE NO. SP2013-012

NOTE: DRAWINGS ARE NOT TO SCALE IF SHEET IS PLOTTED ON 11" x 17"

LEGEND

CODE	REQUIRED	PROPOSED
LANDSCAPING OF GROSS LOT AREA (40,160.94 SF)	15% = 6024 SF	24.1% = 9711 SF
SCENIC OVERLAY DISTRICT BUFFER ALONG RIDGE RD	20'	20'
-3 CANOPY TREES & 4 ACCENT TREES / 100 LF (200 LF)	6 CANOPY, 8 ACCENT	6 CANOPY, 8 ACCENT
STREET BUFFER	10'	10'
-1 TREE / 50' (144')	3 TREES	3 CANOPY, 4 ACCENT
PARKING LOT INTERIOR (21,593 SF)	1 TREE/10 PARKING SPACES > 20,000 SF	3 TREES (6.4% = 1390 SF)

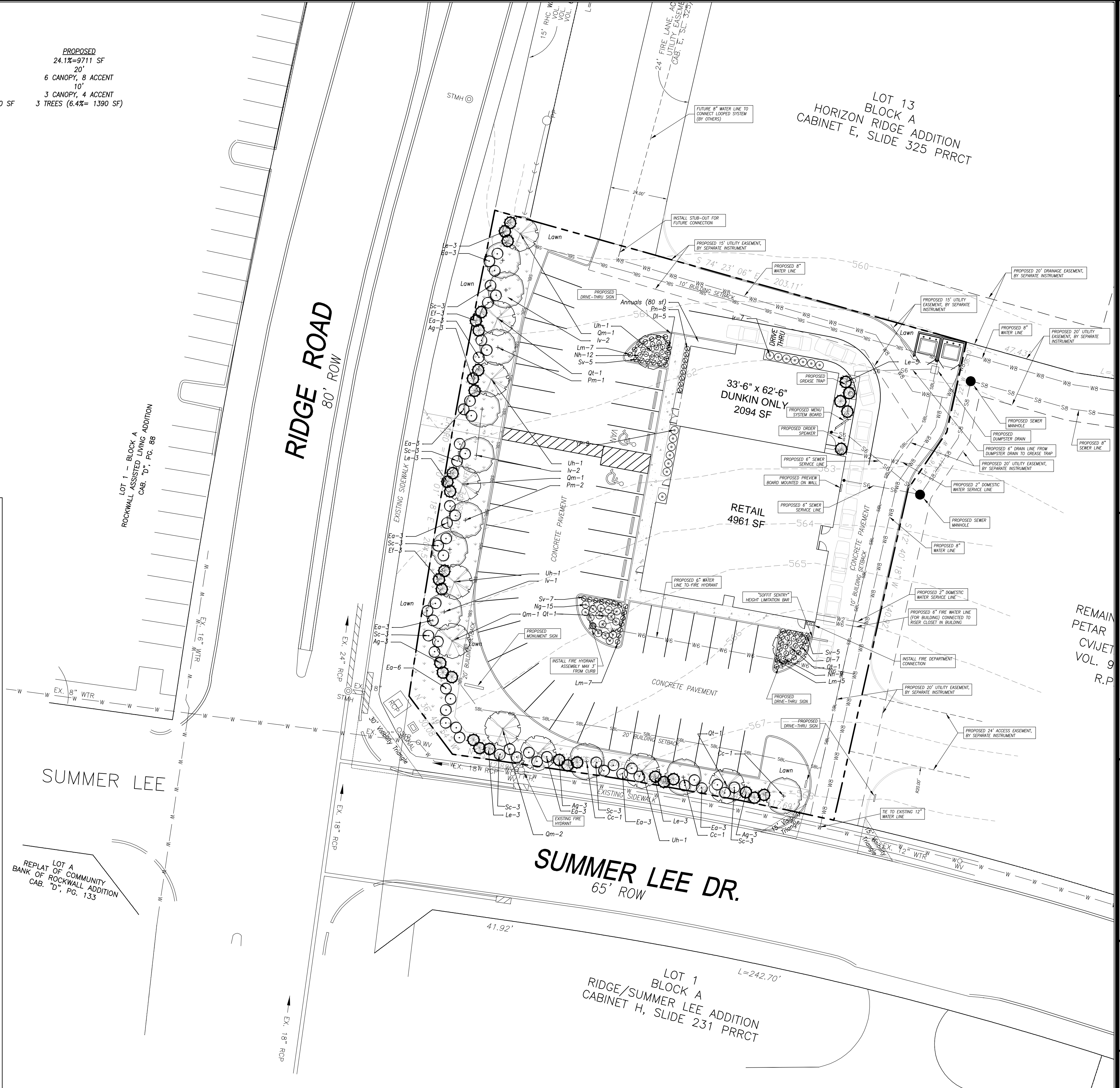
IRRIGATION NOTE: ALL REQUIRED IRRIGATION WILL CONFORM TO THE REQUIREMENTS OF THE UNIFIED DEVELOPMENT CODE.



PLANT SCHEDULE*

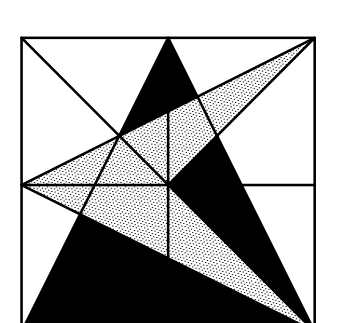
SYMBOL	QTY	GENUS & SPECIES	COMMON NAME	PLANTING SIZE (AS NOTED)	ROOT	MATURE SIZE (HEIGHT x WIDTH)	NOTES	PHOTOS
ACCENT TREES								
Cc	3	<i>Cercis canadensis 'Texensis'</i> ¹	Texas Redbud	30 gal.	Cont.	15' x 15'	Purple in Spring	
Iv	6	<i>Ilex vomitoria</i> ¹	Yaupon Holly	30 gal. tree form	Cont.	25' x 12'	White in Spring, Evergreen	
Pm	6	<i>Prunus mexicana</i> ¹	Mexican Plum	30 gal.	Cont.	25' x 25'	White in Spring	
CANOPY TREES								
Qm	4	<i>Quercus macrocarpa</i> ¹	Bur Oak	4" Cal.	B&B	80' x 80'	Yellow in Fall	
Qt	4	<i>Quercus texana</i> ¹	Texas Red Oak	4" Cal.	B&B	80' x 65'	Reddish in Fall	
Uh	5	<i>Ulmus 'Homestead'</i>	Homestead Elm	4" Cal.	B&B	55' x 35'	Yellowish-Grange in Fall	
SHRUBS								
Ag	12	<i>Abelia grandiflora</i> ²	Glossy Abelia	5 GAL.	CONT.	6' x 6'	White in Summer, Evergreen	
Ea	30	<i>Euonymus alata 'Compacta'</i>	Eleagnus	5 GAL.	CONT.	5' x 5'	Red in Fall	
Ef	6	<i>Eleagnus fruitlandii</i> ²	Eleagnus	5 GAL.	CONT.	7' x 7'	White in Fall, Evergreen	
Ir	8	<i>Ilex cornuta rotunda</i> ²	Dwarf Chinese Holly	3 GAL.	CONT.	3' x 3'	Evergreen	
Le	17	<i>Leucophyllum frutescens</i> ¹	Texas Sage	5 GAL.	CONT.	6' x 5'	Purple in Summer, Evergreen	
Ng	15	<i>Nandina domestica 'Gulf Stream'</i> ²	Gulf Stream Nandina	3 GAL.	CONT.	3' x 3'	White in Early Summer, Evergreen	
Nh	21	<i>Nandina domestica 'Harbour Dwarf'</i> ²	Harbour Dwarf Nandina	3 GAL.	CONT.	2' x 2'	White in Spring, Evergreen	
Sc	21	<i>Spiraea cantoniensis</i>	Bridal Wreath Spiraea	5 GAL.	CONT.	6' x 8'	White in Spring	
Yf	9	<i>Yucca filamentosa</i> ¹	Yucca	3 GAL.	CONT.	3' x 4'	White in Summer, Evergreen	
GROUNDCOVERS								
DI	12	<i>Dyschoriste linearis</i> ¹	Snake Herb	2 GAL.	CONT.	6" x 1'	Purple in Summer	
Lm	19	<i>Liriope muscari</i> ²	Liriope	2 GAL.	CONT.	1.5' x 1'	Purple in Summer, Evergreen	
Pn	8	<i>Phyla nodiflora</i> ¹	Frogfruit	2 GAL.	CONT.	6" x 1'	White in Summer	
Sv	17	<i>Santolina virens</i> ¹	Santolina	2 GAL.	CONT.	2' x 2'	Yellow in Summer, Evergreen	

FOOTNOTES:
¹ All plant spacing is as shown on the plan.
² Plant is considered native.
³ Plant is considered adapted.



DUNKIN' DONUTS & RETAIL SPACE
 RIDGE ROAD & SUMMER LEE DR.
 ROCKWALL, TEXAS

LANDSCAPE PLAN



CARNEY ENGINEERING COMPANY
 4588 Hinton Dr.
 Plano, Texas 75024
 PH (469) 443-0861
 FAX (469) 443-0863

THIS DOCUMENT IS RELEASED FOR THE PURPOSE OF INTERIM REVIEW AND/OR MARK-UP UNDER THE AUTHORITY OF T. CRAIG CARNEY, P.E. 55714, DATED 07/22/13. THIS DOCUMENT IS NOT TO BE USED FOR THE PURPOSE OF CONSTRUCTION, BIDDING, AND/OR PERMITTING.

DRAWN BY: NS
 CHECKED BY: TCC
 START DATE: JUNE 2013
 SCALE: 1" = 20'
 PROJECT NO.: 24437-1015

SHEET
C-501

CASE NUMBER - SP2013-012
 SUP CASE NUMBER - Z2013-017

DESCRIPTION

The patent pending Lumark Crosstour™ LED Wall Pack Series of luminaries provides an architectural style with super bright, energy efficient LEDs. The low-profile, rugged die-cast aluminum construction, universal back box, stainless steel hardware along with a sealed and gasketed optical compartment make the Crosstour impervious to contaminants. The Crosstour wall luminaire is ideal for wall/surface, inverted mount for façade/canopy illumination, post/bollard and low level pathway illumination including stairs. Typical applications include building entrances, multi-use facilities, apartment buildings, institutions, schools, stairways and loading docks.

SPECIFICATION FEATURES

Construction

Slim, low profile LED design with rugged one-piece, die-cast aluminum hinged removable door and back box. Matching housing styles incorporate both a small and large design. The small housing is available in 10W and 20W. The large housing is available in the 30W model. Patent pending secure lock hinge feature allows for safe and easy tool-less electrical connections with the supplied lever-lock connectors. Back box includes three (3) half-inch, NPT threaded conduit entry points. The universal back box supports both the small and large forms and mounts to standard 3-1/2" to 4" round and octagonal, 4" square, single gang and masonry junction boxes. Key hole gasket allows for adaptation to junction box or wall. External fin design extracts heat from the fixture surface. One-piece silicone gasket seals door and back box. Not recommended for car wash applications.

Optical

Silicone sealed optical LED chamber incorporates a custom engineered mirrored anodized reflector providing high-efficiency illumination. Optical assembly includes impact-resistant tempered glass and meets IESNA requirements for full cutoff compliance. Solid state LED Crosstour luminaires are thermally optimized with five (5) lumen packages in cool 5000K or neutral warm 3500K LED color temperature (CCT).

Electrical

LED driver is mounted to the die-cast housing for optimal heat sinking. LED thermal management system incorporates both conduction and natural convection to transfer heat rapidly away from the LED source. 10W models operate in -40°C to 40°C [-40°F to 104°F]. 20W and 30W models operate in -30°C to 40°C [-22°F to 104°F]. Crosstour luminaires

Catalog #		Type
Project		
Comments		Date
Prepared by		

maintain greater than 70% of initial light output after 50,000 hours of operation. Three (3) half-inch NPT threaded conduit entry points allow for thru-branch wiring. Back box is an authorized electrical wiring compartment. Integral LED electronic driver incorporates surge protection. 10W, 120V 50/60 Hz., 20W and 30W, 120-277V 50/60Hz.

Finish

Crosstour is protected with a Super TGIC carbon bronze or summit white polyester powder coat paint. Super TGIC powder coat paint finishes withstand extreme climate conditions while providing optimal color and gloss retention of the installed life.

Warranty

Crosstour features a five-year limited warranty.



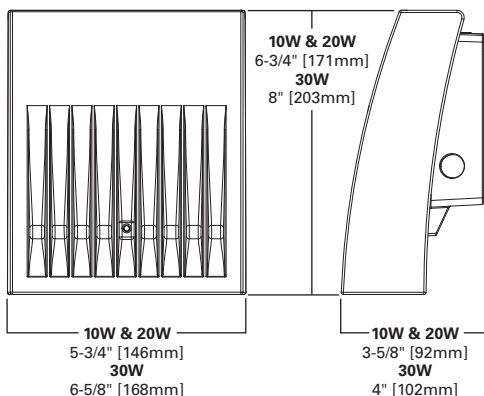
XTOR CROSSTOUR LED

WALL / SURFACE MOUNT
POST / BOLLARD MOUNT
LOW LEVEL MOUNT
INVERTED MOUNT

Sustainable Design

DESIGNLIGHTS
CONSORTIUM

DIMENSIONS



CERTIFICATION DATA

UL/cUL Wet Location Listed
IP66 Ingress Protection Rated
ADA Compliant
LM79 / LM80 Compliant
ROHS Compliant
ARRA Compliant
DLC Qualified Models
Lighting Facts® Approved
Title 24 Compliant
NOM Compliant Models

TECHNICAL DATA

40°C Maximum Ambient Temperature
External Supply Wiring 90°C Minimum

EPA

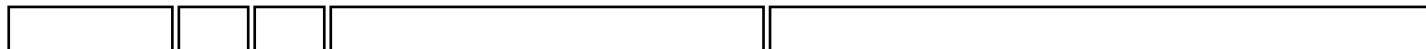
Effective Projected Area:
(Sq. Ft.)
XTOR1A/XTOR2A=0.34
XTOR3A = 0.45

SHIPPING DATA:

Approximate Net Weight:
3.7 - 5.25 lbs. [1.7 - 2.4 kgs.]

ORDERING INFORMATION

Sample Number: XTOR2A-N-WT-PC1



Series

XTOR1A=Small Door, 10W¹
XTOR2A=Small Door, 20W²
XTOR3A=Large Door, 30W²

LED Kelvin Color ³

_=Bright White (Standard)
N=Neutral Warm White, 3500K

Housing Color

_=Carbon Bronze (Standard)
WT=Summit White

Options ⁴

PC1=Photocontrol 120 V
PC2=Photocontrol 208-277 V

Accessories ⁵

WG/XTOR=Wireguard (fits both)

- Notes:**
- 120V only, XTOR1A not available in 3500K.
 - Design Lights Consortium™ qualified (down mount only). Consult Design Lights Consortium website for all applications.
 - PC2 only available in 20W and 30W models.
 - PC1 and PC2 photocontrols are factory installed. PC2 not available on XTOR1A models.
 - Order WG/XTOR wire guard separately.

STOCK ORDERING INFORMATION

10W Series	20W Series	30W Series
XTOR1A = 10W, 5000K, Carbon Bronze	XTOR2A = 20W, 5000K, Carbon Bronze	XTOR3A = 30W, 5000K, Carbon Bronze
XTOR1A-WT = 10W, 5000K, Summit White	XTOR2A-N = 20W, 3500K, Carbon Bronze	XTOR3A-N = 30W, 3500K, Carbon Bronze
XTOR1A-PC1 = 10W, 5000K, 120V PC, Carbon Bronze	XTOR2A-WT = 20W, Summit White	XTOR3A-WT = 30W, Summit White
	XTOR2A-PC1 = 20W, 120V PC, Carbon Bronze	XTOR3A-PC1 = 30W, 120V PC, Carbon Bronze



5-DAY QUICK SHIP ORDERING INFORMATION

10W Series	20W Series	30W Series
XTOR1A-WT-PC1 = 10W, 5000K, Summit White, 120V PC	XTOR2A-PC2 = 20W, 5000K, 208-277V PC, Carbon Bronze	XTOR3A-PC2 = 30W, 5000K, 208-277V PC, Carbon Bronze
	XTOR2A-WT-PC1 = 20W, 5000K, Summit White, 120V PC	XTOR3A-WT-PC1 = 30W, 5000K, Summit White, 120V PC
	XTOR2A-WT-PC2 = 20W, 5000K, Summit White, 208-277V PC	XTOR3A-WT-PC2 = 30W, 5000K, Summit White, 208-277V PC
	XTOR2A-N-WT = 20W, 3500K, Summit White	XTOR3A-N-WT = 30W, 3500K, Summit White
	XTOR2A-N-PC1 = 20W, 3500K, 120V PC, Carbon Bronze	XTOR3A-N-PC1 = 30W, 3500K, 120V PC, Carbon Bronze
	XTOR2A-N-PC2 = 20W, 3500K, 208-277V PC, Carbon Bronze	XTOR3A-N-PC2 = 30W, 3500K, 208-277V PC, Carbon Bronze
	XTOR2A-N-WT-PC1 = 20W, 3500K, Summit White, 120V PC	XTOR3A-N-WT-PC1 = 30W, 3500K, Summit White, 120V PC
	XTOR2A-N-WT-PC2 = 20W, 3500K, Summit White, 208-277V PC	XTOR3A-N-WT-PC2 = 30W, 3500K, Summit White, 208-277V PC

CURRENT DRAW

	XTOR1A	XTOR2A	XTOR3A
120V	.13A	0.2A	0.3A
208V	--	0.1A	0.15A
240V	--	0.15A	0.15A
277V	--	0.15A	0.15A

SIGNATURE SERIES

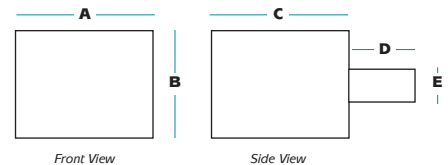


A universally styled lighting system that offers the aesthetic appeal of optional accent striping and high performance through a wide range of photometry that is sure to be architecturally pleasing in today's competitive marketplace. Ideally suited for automotive dealerships, restaurants, retail and other general outdoor area lighting applications.



Fixture Specifications

- One-piece formed aluminum housing with vertical lamp orientation
- Rotatable optics standard
- Easy access to lamp and ballast compartments
- Tempered clear glass lens or sag glass lens available
- Luminaire finished in weatherproof powder-coat paint
- Available with color band accent stripe
- Lamp and arm included
- UL listed for wet locations



A	B	C	D	E	EPA
21.0"	15.0"	21.0"	10.0"	5.0"	3.2

ORDERING INFORMATION

SAMPLE CATALOG NUMBER

SL **XXXXXXXX** **XX** **X** **X** **XX**

Series Wattage/Source Finish Distribution Lens Voltage

SERIES	
SL	Signature Series

WATTAGE/SOURCE ¹	
320PMH	320 watt pulse start metal halide
400PMH	400 watt pulse start metal halide
750PMH	750 watt pulse start metal halide
1000MH	1000 watt metal halide
400HPS	400 watt high pressure sodium
1000HPS	1000 watt high pressure sodium
350PMH	350 watt pulse start metal halide

FINISH ²	
DB	Dark Bronze
BK	Black
WH	White
PS	Platinum Silver

DISTRIBUTION	
F	Forward Throw
3	Type III
5	Type V
5	Type V

LENS	
F³	Flat Glass
S	Sag Glass

VOLTAGE	
MT	Multi-Tap ballast (120, 208, 240, 277V)
48	480V

¹ Consult factory for other wattages and sources.

² Consult factory for other finishes. Specify optional color band finish.

³ Flat Glass Dark Sky Compliant only



A HUBBELL LIGHTING, INC. COMPANY

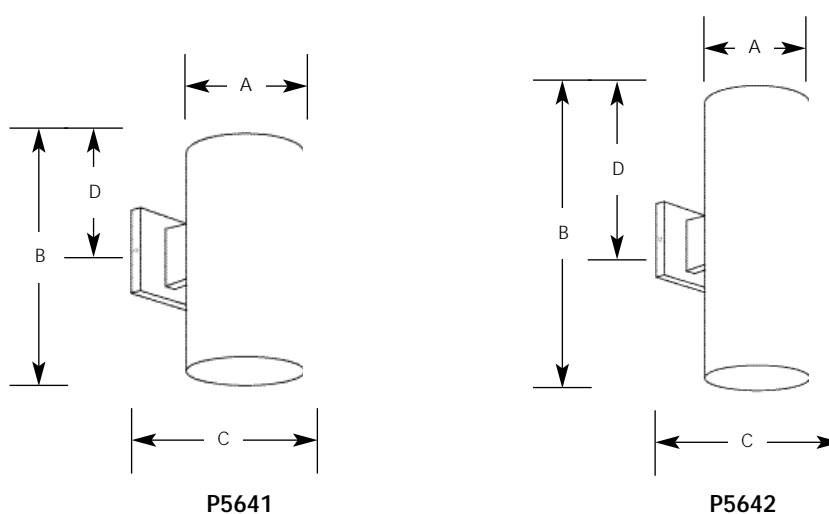
Performance Designed Lighting Products

1085 Johnson Drive • Buffalo Grove, IL 60089 • TOLL-FREE: 800-544-4848 • PHONE: 847-279-0627 • FAX: 847-279-0642

www.securitylighting.com

	Type			
	-20	-30	-31	-82
P5641	<input type="checkbox"/>	<input type="checkbox"/>	<input type="checkbox"/>	<input type="checkbox"/>
P5642	<input type="checkbox"/>	<input type="checkbox"/>	<input type="checkbox"/>	<input type="checkbox"/>

Catalog No.	Finish				Lamping	Dimensions (Inches)			
	Bronze	White	Black	Metallic Gray		A	B	C	D
P5641	-20	-30	-31	-82	1-250w QPAR38, 150w BR40	6	12	8-7/8	4-1/2
P5642	-20	-30	-31	-82	2-250w QPAR38	6	18	8-7/8	8



Specifications:

General

- Extruded aluminum .125 wall thickness one piece cylinder
- Cast aluminum wall bracket
- P5641 - Down lighting
- P5642 - Up/Down lighting. P8798-31 top cover lens recommended when unit is used outdoors
- Interior finish matches exterior finish

Mounting

- Covers any outlet box
- Cast mounting bracket is 4-1/2" square
- Outlet box mounting bracket supplied permitting attachment of unit to wall with one almost invisible set screw

Electrical

- Medium base porcelain socket with nickel plated brass screw shell

Accessories

- P8798-31 Top lens cover for P5642 fixture

Options

- Bronze finish - specify " 20" suffix
- White finish - specify " 30" suffix
- Black finish - specify " 31" suffix
- Metallic Gray finish - specify " 82" suffix

Labeling

- UL-CUL wet location listed (5642 only with top cover lens)