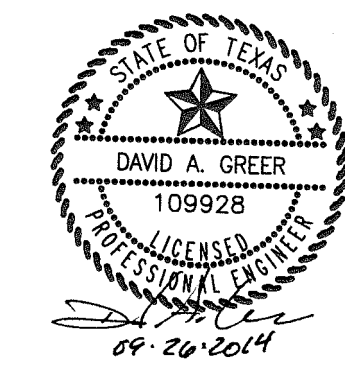


NOTE: INFORMATION ON THIS SHEET AND OTHER SHEETS THROUGHOUT THIS PLAN SET IS PART OF A UNIFIED DESIGN. THE CONTRACTOR SHALL NOT SEPARATE DRAWINGS FROM THE SET FOR DISTRIBUTION TO SPECIFIC DISCIPLINES. EACH SUBCONTRACTOR SHALL BE PROVIDED WITH ALL SHEETS WITHIN THIS PLAN SET.



Design and construction documents as instruments of service are given in confidence and remain the property of Herschman Architects. The use of this design and these construction documents for purposes other than the specific project named herein is strictly prohibited without expressed written consent of Herschman Architects, Incorporated.

Date: 9-26-2014 Issue: BID/PERMIT

Drawn By: _____

Project No.: 14389

Drawn By: _____

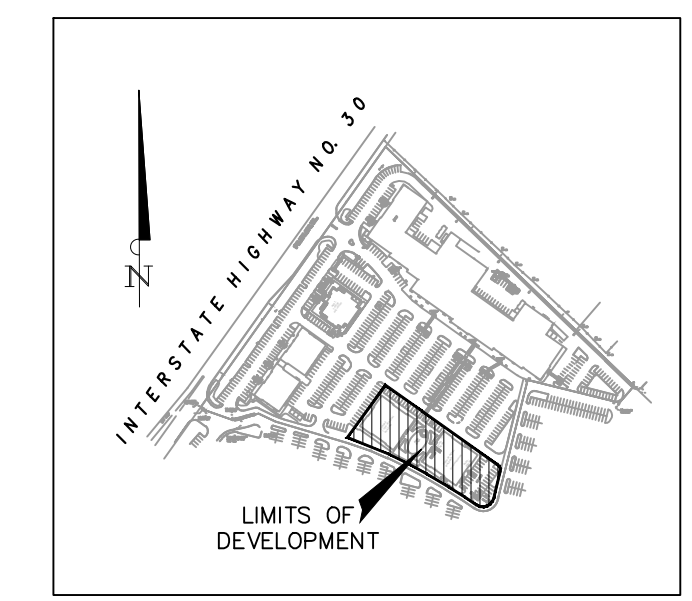
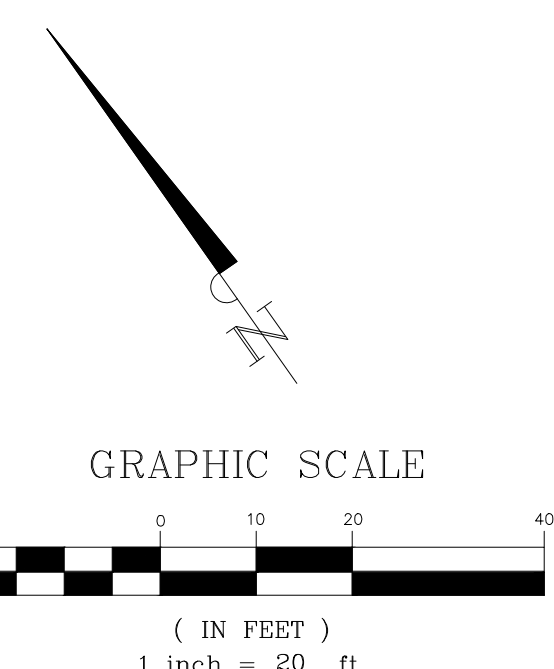
Project No.: 14389

SITE PLAN
 RETAIL BUILDING
 PLAZA AT ROCKWALL SHOPPING CENTER
 INTERSTATE HIGHWAY 30
 ROCKWALL, TX



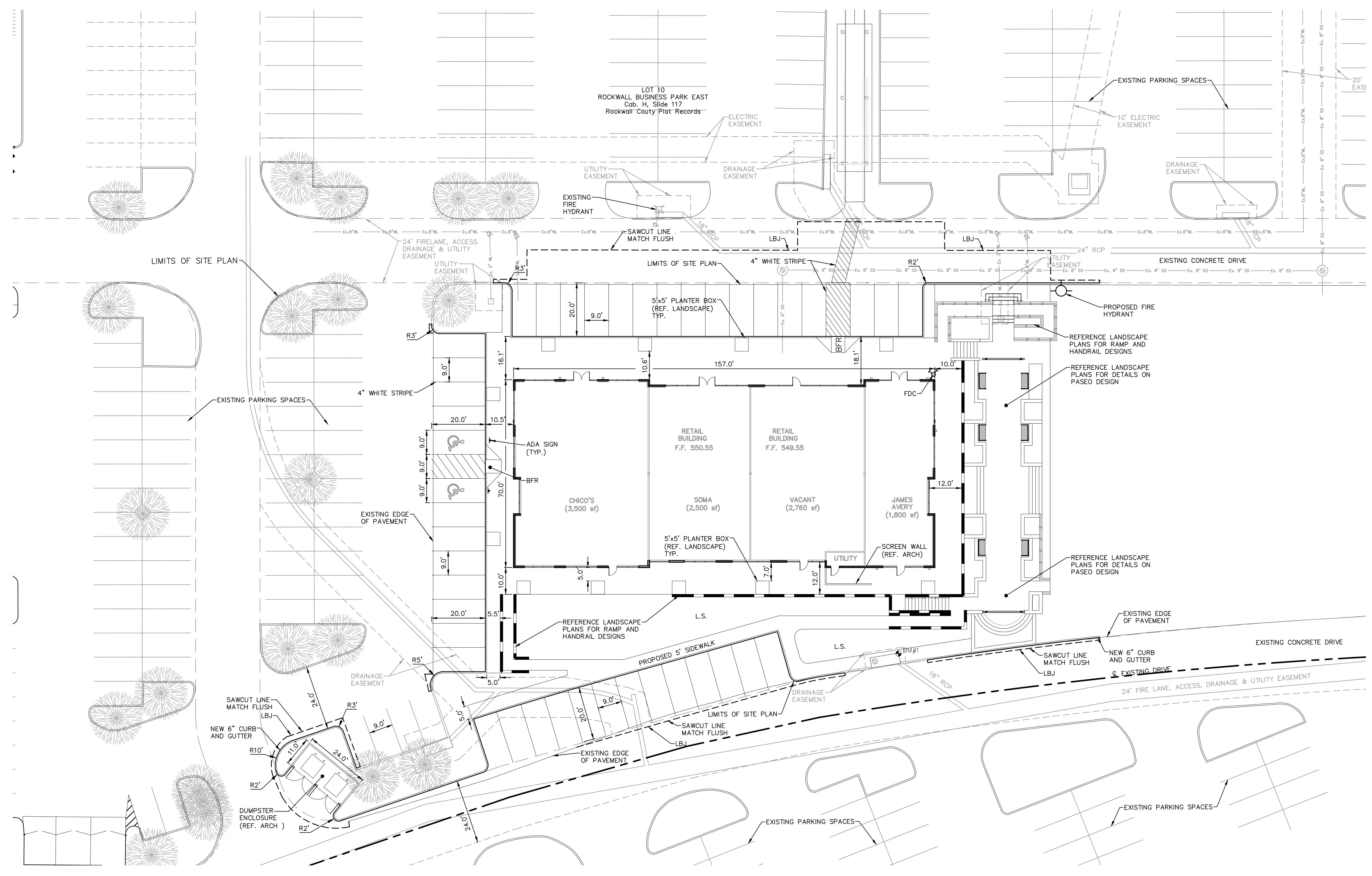
HERSCHMAN ARCHITECTS INCORPORATED
 25001 EMERY ROAD, SUITE 400
 CLEVELAND, OH 44128
 TEL (216) 223-3200
 FAX (216) 223-3210
 www.herschmanarchitects.com

C-1.0



KEY MAP
N.T.S.

- NOTES:
- ALL SIDEWALKS AND/OR CURB RAMPS WITHIN THE ADJACENT PUBLIC RIGHT OF WAY MUST BE BUILT ACCORDING TO APPLICABLE STANDARDS OF THE CITY'S PUBLIC WORKS DEPARTMENT, AND A SIDEWALK PERMIT MUST BE PROCURED FROM THE ENGINEERING DIVISION.
 - ALL OUTDOOR LIGHTING SHALL BE FULLY SHIELDED.
 - THE STORAGE OF WASTE CONTAINERS SHALL MEET THE MINIMUM STANDARDS OF THE CITY'S SOLID WASTE DIVISION.
- BFR - BARRIER FREE RAMP
 LS - LANDSCAPE AREA



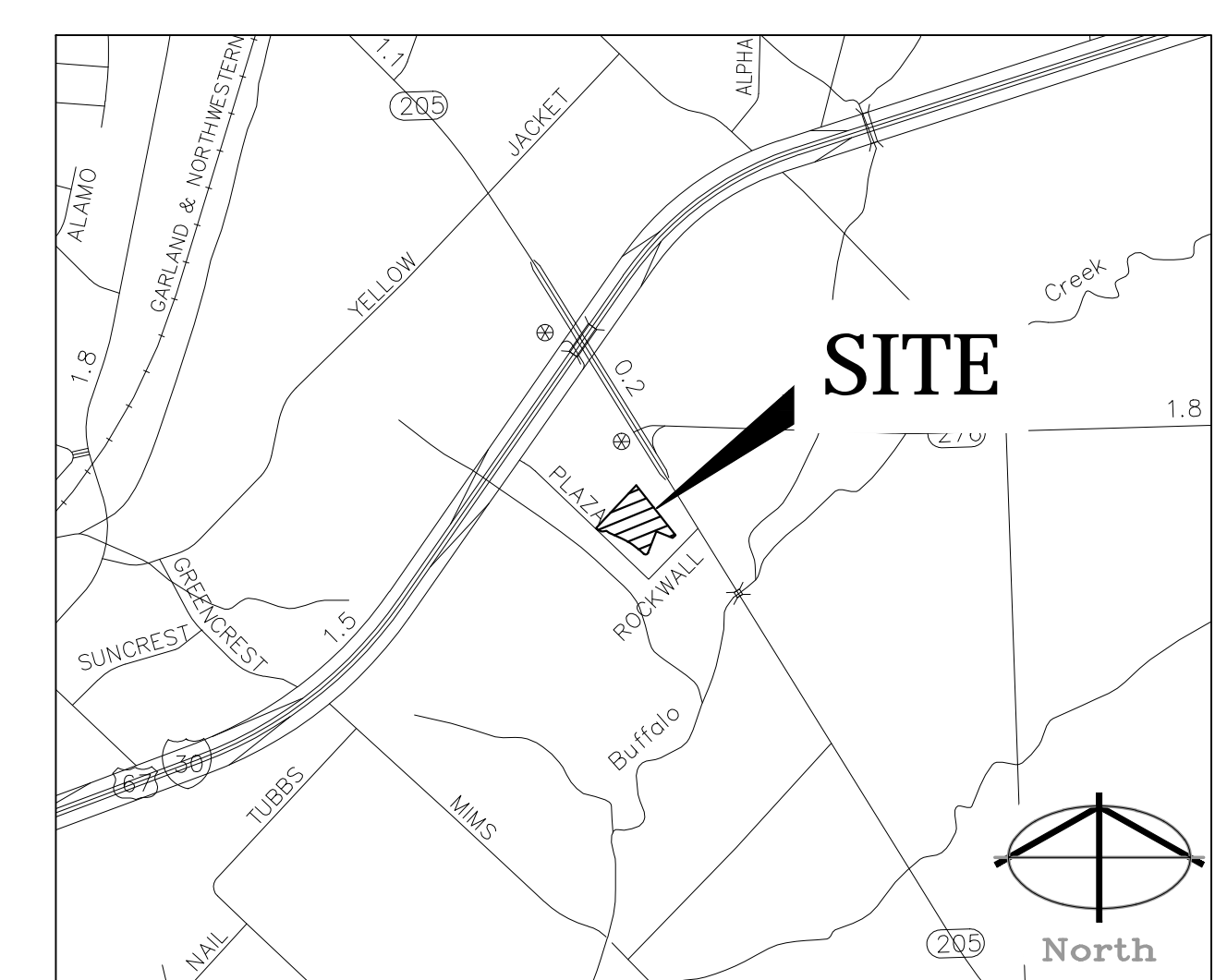
PHASE 1 AND 2 TOTALS:
 TOTAL PARKING REQUIRED: 2,014 SPACES (1,740 RETAIL, 274 REST.)
 EXISTING PARKING: 1,990 SPACES

CITY OF ROCKWALL SHARED PARKING REQUIREMENT.

Time of Day	Office	Retail	Restaurant	Total
6:00 a.m. - 12:00 noon	1.00x167= 167	0.97x 1,740=1,687	0.50x 274=137	1,824
12:00 noon - 1:00 p.m.	0.90x167= 150	1.00x 1,740=1,740	0.70x 274=192	1,932 PEAK PARKING REQUIREMENT
1:00 p.m. - 4:00 p.m.	0.97x167= 163	0.97x 1,740=1,687	0.60x 274=164	1,851
4:00 p.m. - 6:00 p.m.	0.47x167= 78	0.82x 1,740=1,427	0.90x 274=246	1,673
6:00 p.m. - 8:00 p.m.	0.07x167= 12	0.89x 1,740=1,548	1.00x 274=274	1,822
8:00 p.m. - 12:00 midnight	0.03x167= 5	0.61x 1,740=1,061	1.00x 274=274	1,335

Per Parking Study - Plaza at Rockwall by Herschman Architects Dated 11-1-2012

BANNISTER ENGINEERING
 1696 Country Club Drive | Mansfield, TX 76063 | 817.842.2094 | 817.842.2095 fax
 REGISTRATION # F-10599 (TEXAS)



VICINITY MAP
N.T.S.

SITE SUMMARY TABLE

SITE DATA SUMMARY TABLE:

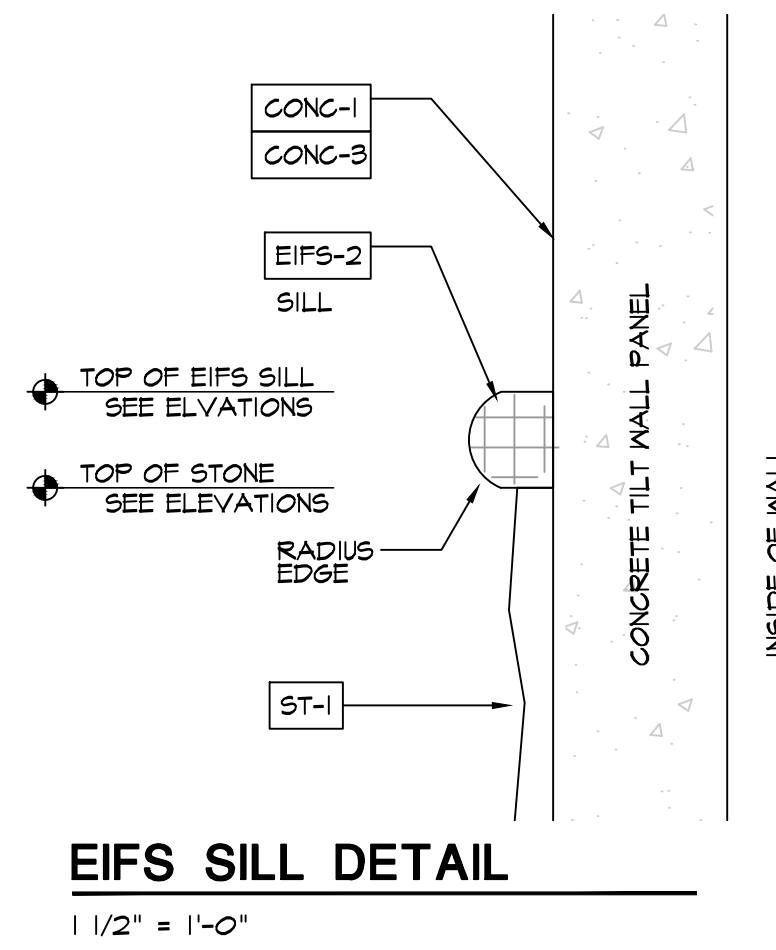
General Site Data:	
Zoning	Commercial
Land Use	Retail
Lot Area	74,465 sf (1.7095 ac)
Total Building Area (square feet)	10,650 sf
Building Height (stories)	1 story
Lot Coverage	14.3%
Floor Area Ratio	0.143:1
Landscape Area	33,644 sf
Landscape Percentage	45%

ENGINEER: BANNISTER ENGINEERING, LLC
 1696 COUNTRY CLUB DRIVE
 MANSFIELD, TX 76063
 (817) 842-2094
 CONTACT: DAVID GREER

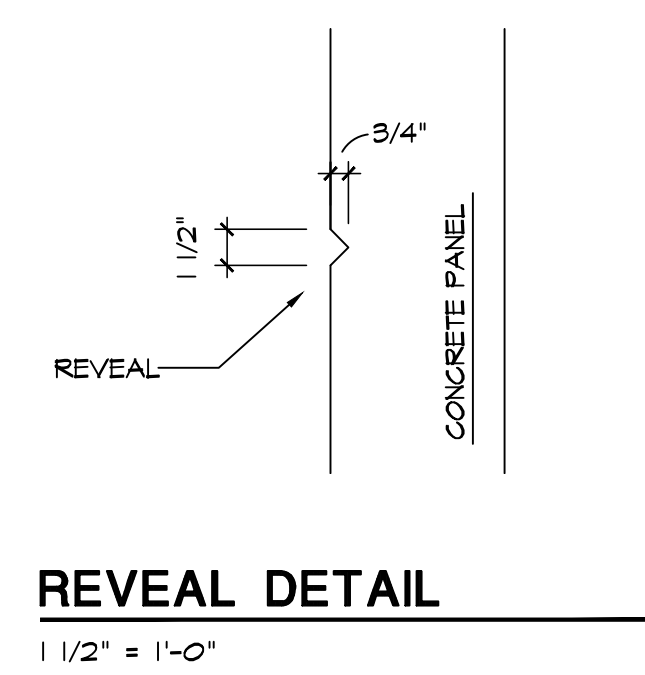
OWNER: EXCEL ROCKWALL, LLC
 801 NORTH 500 WEST, SUITE 201
 BOUNTIFUL, UTAL 84010

SITE PLAN
 for
ROCKWALL BUSINESS PARK EAST SUBDIVISION
INTERSTATE HIGHWAY NO. 30
 Lot 10
 City of Rockwall
 Rockwall County, Texas

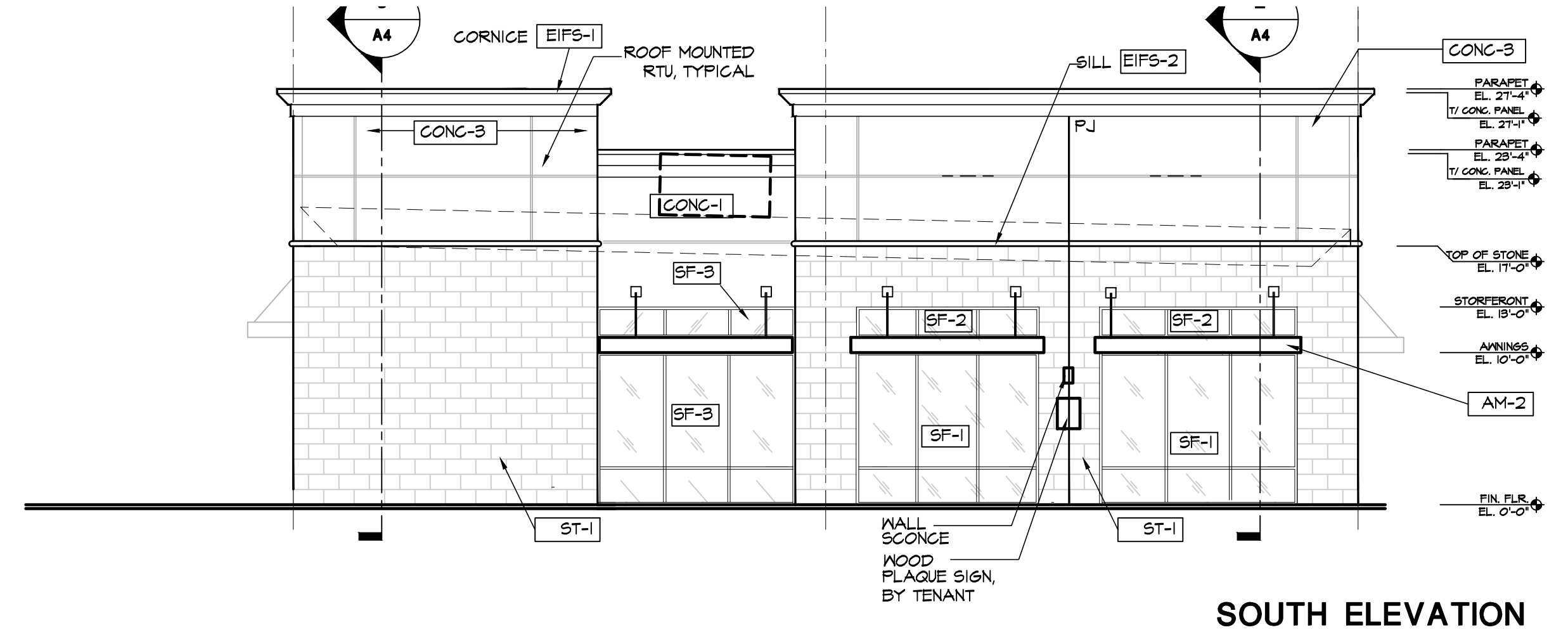
CITY OF ROCKWALL CASE NO.: XXXXXX-XXX



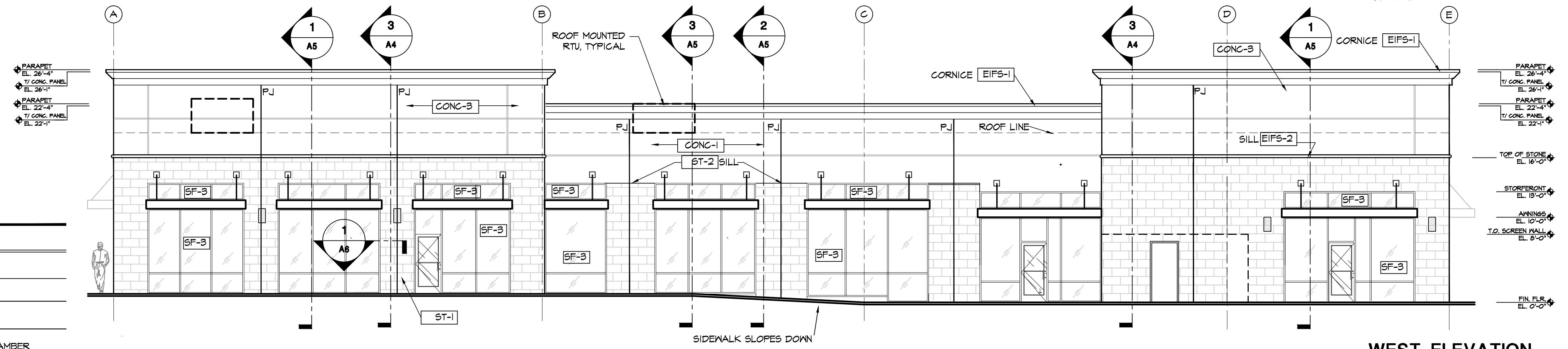
EIFS SILL DETAIL
1/2" = 1'-0"



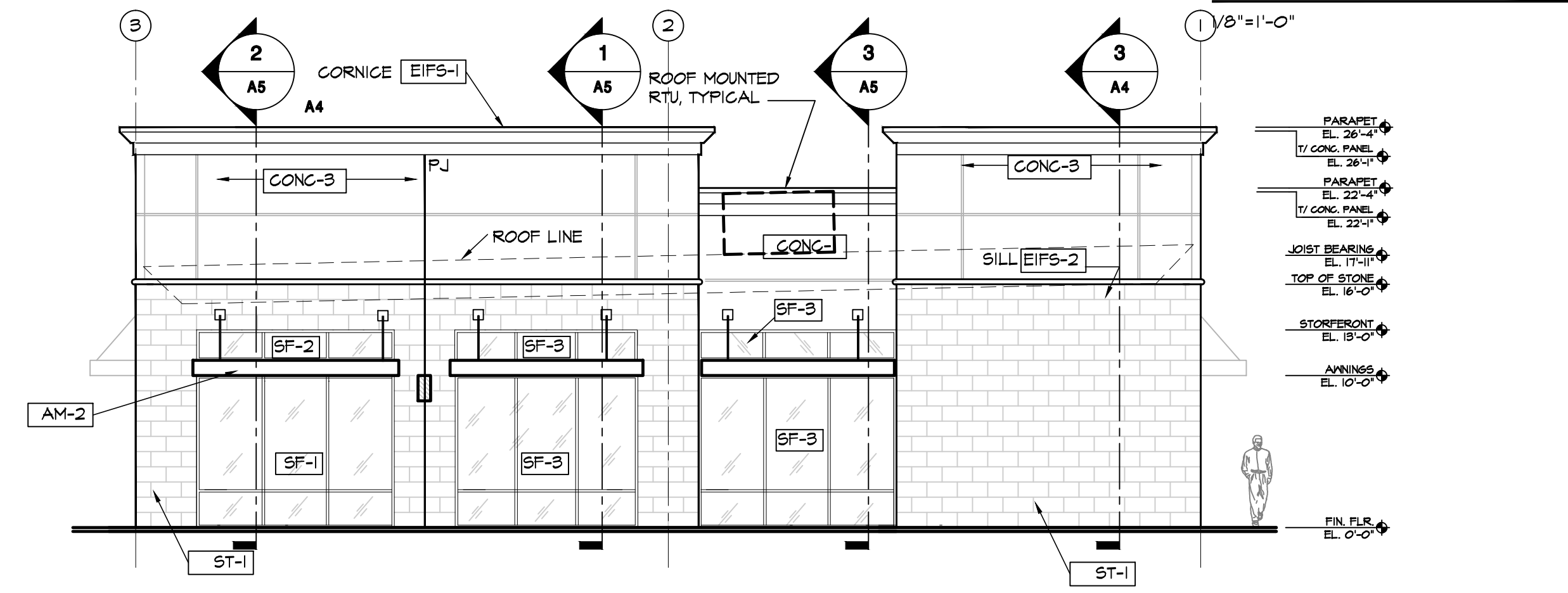
REVEAL DETAIL
1/2" = 1'-0"



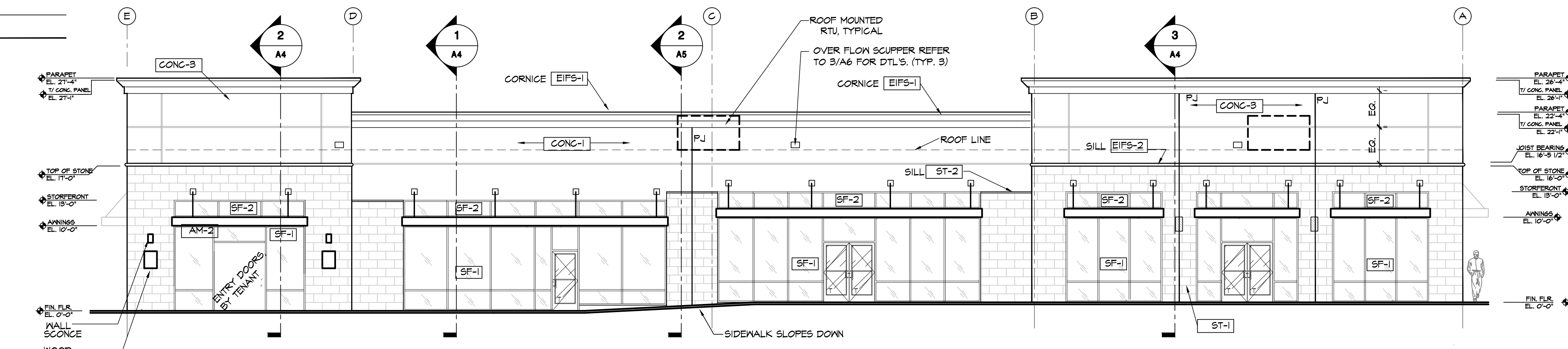
SOUTH ELEVATION
1/8" = 1'-0"



WEST ELEVATION
1/8" = 1'-0"



NORTH ELEVATION
1/8" = 1'-0"



EAST ELEVATION
1/8" = 1'-0"

FINISH LEGEND

MATERIAL	SYMBOL	DESCRIPTION	MODEL / COLOR
EIFS	EIFS-1	EIFS CORNICE / MOLDINGS	PAINT TO MATCH SHER. WILLIAMS #612 BISCUIT
	EIFS-2	EIFS SILL WITH ROUNDED END, 4" HIGH	PAINT TO MATCH SHER. WILLIAMS #612 BISCUIT
CONCRETE TILT WALL	CONG-1	ACRYLIC TEXTURED CONC. TILT WALL	SAND FINISH, COLOR TO MATCH DRYVIT #434A CHLOE
	CONG-3	ACRYLIC TEXTURED CONC. TILT WALL	SAND FINISH, DRYVIT -MATCH S.N. #000T DECOROUS AMBER
STONE TILE	ST-1	STONE TILE	NATURAL LIMESTONE TILE, 'LUEDERS' (ROCK FACE) 12" X 24", 1/4" THICKNESS OVER MORTAR SETTING BED, MORTARED JOINTS
	ST-2	STONE WATER TABLE SILL	NATURAL LIMESTONE 'LUEDERS' (ROCK FACE) WATER TABLE SILL, 2" HIGH
STOREFRONT	SF-1	1/4" CLEAR GLASS IN CLEAR ANODIZED FRAMING. GLAZING TO HAVE 0.25 SHGC AND A 0.8 U-FACTOR MIN. PERFORMANCE	
	SF-2	1/4" SPANDREL GLASS IN CLEAR ANODIZED FRAMING	
	SF-3	1/4" SPANDREL GLASS IN CLEAR ANODIZED FRAMING	
STEEL TUBE ANNING	AM-2	12" X 4" STEEL TUBE ANNING. PAINT BARK BRONZE (SEMI-GLOSS)	

NOTE:
PJ - DENOTES TILT WALL PANEL JOINT
3/8" JOINT BETWEEN PANELS

ALL ROOF MOUNTED MECHANICAL EQUIPMENT WILL BE SCREENED AND NOT VISIBLE FROM THE PROPERTY LINES OF THE SUBJECT PROPERTY

EXTERIOR MATERIAL BREAKDOWN

	STONE	TEXT. CONC.	EIFS	CLERESTORY GLAZING
NORTH ELEVATION	30 %	32 %	1 %	37 %
SOUTH ELEVATION	46 %	29 %	1 %	24 %
WEST ELEVATION	28 %	33 %	1 %	38 %
EAST ELEVATION	28 %	33 %	1 %	38 %

Design and construction documents as instruments of service are given in confidence and remain the property of Herschman Architects. The use of this design and these construction documents for purposes other than the specific project named herein is strictly prohibited without expressed written consent of Herschman Architects, Incorporated.

Date: 09-26-14 Issue: BID/PERMIT

Drawn By:

Project No.: 14384

RETAIL BUILDING
PLAZA AT ROCKWALL SHOPPING CENTER
INTERSTATE HIGHWAY 30
ROCKWALL, TX



25001 EMERY ROAD, SUITE 400
CLEVELAND, OH 44128
TEL (216) 223-3200
FAX (216) 223-3210
www.herschmanarchitects.com

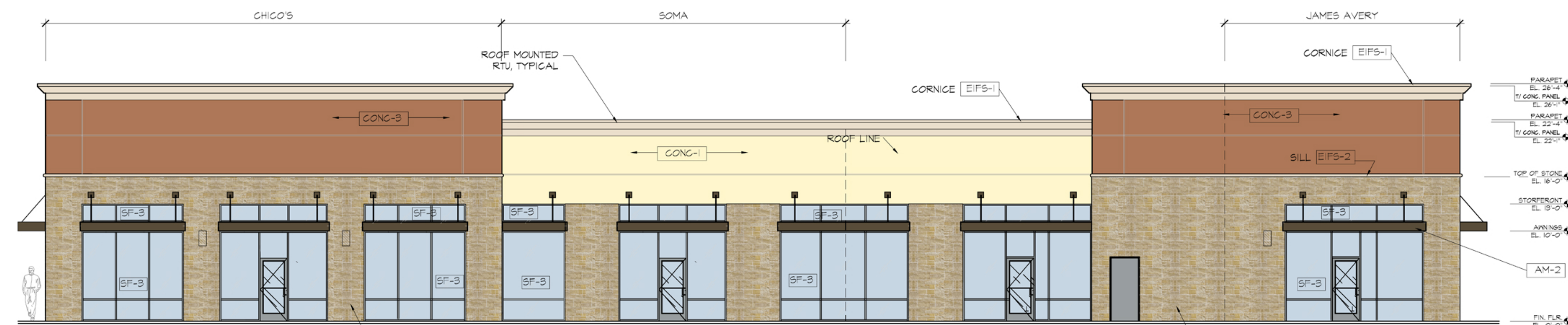
EXTERIOR MATERIAL BREAKDOWN

MATERIAL	STONE	TEXT. CONC.	EIFS	CLERESTORY GLAZING
NORTH ELEVATION	36 %	34 %	1 %	29 %
SOUTH ELEVATION	36 %	34 %	1 %	29 %
WEST ELEVATION	28 %	34 %	1 %	37 %
EAST ELEVATION	26 %	36 %	1 %	37 %



SOUTH ELEVATION

1/8"=1'-0"



WEST ELEVATION

1/8"=1'-0"

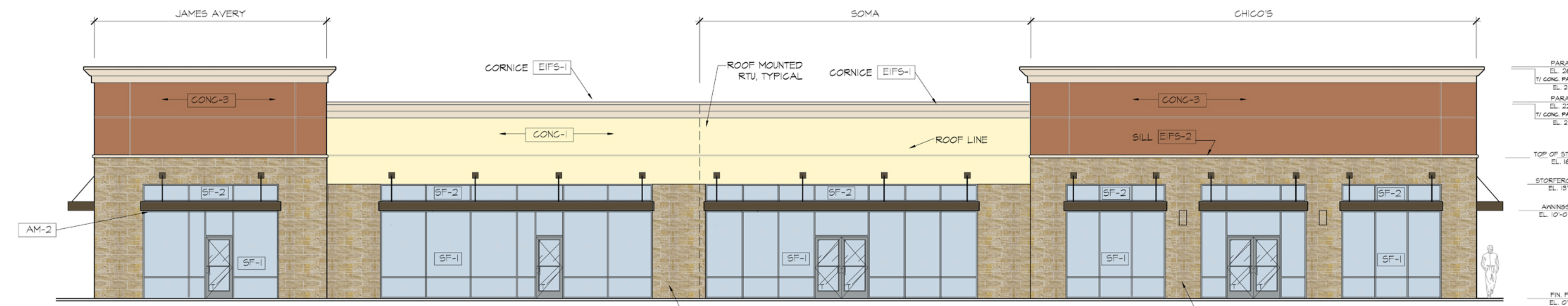
FINISH LEGEND

MATERIAL	SYMBOL	DESCRIPTION	MODEL / COLOR
EIFS	EIFS-1	EIFS CORNICE / MOLDINGS	PAINT TO MATCH SHER. WILLIAMS #6112 BISCUIT
	EIFS-2	EIFS SILL WITH ROUNDED END, 4" HIGH	PAINT TO MATCH SHER. WILLIAMS #6112 BISCUIT
CONCRETE TILT WALL	CONG-1	ACRYLIC TEXTURED CONG. TILT WALL	SAND FINISH, COLOR TO MATCH DRYVIT #434A CHLOE
	CONG-3	ACRYLIC TEXTURED CONG. TILT WALL	SAND FINISH, DRYVIT -MATCH S/W #0001 DECOROUS AMBER
STONE TILE	ST-1	STONE TILE	NATURAL LIMESTONE TILE, "LIEDERS" (ROCK FACE) 12" X 24" - 1/2" THICKNESS OVER MORTAR SETTING BED, MORTAR JOINTS
STOREFRONT	SF-1	1" CLEAR SAFETY GLASS IN CLEAR ANODIZED FRAMING	
	SF-2	1" FROSTED GLASS IN CLEAR ANODIZED FRAMING	
	SF-3	1/4" SPANDREL GLASS IN CLEAR ANODIZED FRAMING	
STEEL TUBE AWNING	AM-2	12" X 4" STEEL TUBE AWNING, PAINT BARK BRONZE (SEMI-GLOSS)	



NORTH ELEVATION

1/8"=1'-0"



EAST ELEVATION

1/8"=1'-0"

Design and construction documents are instruments of service and are given in confidence and remain the property of Hershman Architects. The use of these design and construction documents for purposes other than the specific project named herein is strictly prohibited without expressed written consent of Hershman Architects, Incorporated.

Date	Issue
6-24-2014	
6-25-2014	
6-26-2014	

Drawn By: JF
Project No.: T.B.A.

10,637 SQ. FT. RETAIL BUILDING
PLAZA AT ROCKWALL
ROCKWALL, TX

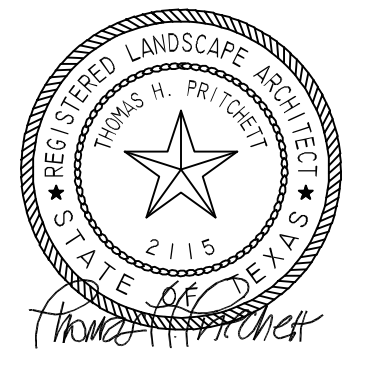
HERSCHMAN ARCHITECTS
INCORPORATED

25001 EMERY ROAD, SUITE 400
CLEVELAND, OH 44128
TEL (216) 223-3200
FAX (216) 223-3210
www.hershmanarchitects.com

A2

DATE PLOTTED: 6/26/2014 10:58:11 AM
PLOTTER: HP DesignJet T1100
PLOT FILE: A:\PROJECTS\10637\10637.dwg
SCALE: 1/8"=1'-0"
DRAWN BY: JF
CHECKED BY: JF

THE SEAL APPEARING ON THIS DOCUMENT WAS AUTHORIZED BY T.H. PRITCHETT, R.L.A. NO. 2115 ON 09/22/04



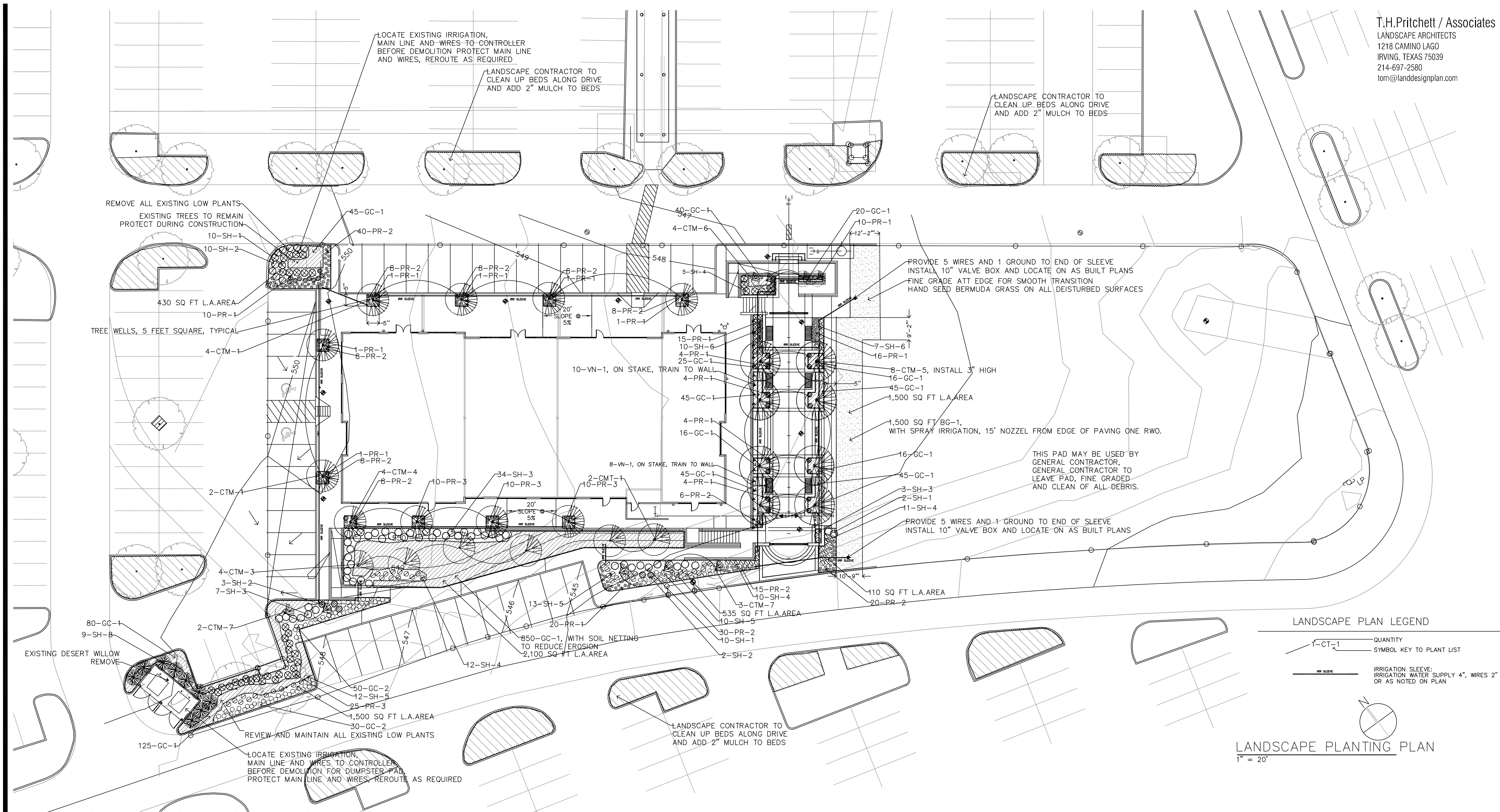
Design and construction documents or instruments of service are given in confidence and remain the property of Herschman Architects. The use of this design and these construction documents for purposes other than the specific project named herein is strictly prohibited without expressed written consent of Herschman Architects, Incorporated.

Date	Issue
------	-------

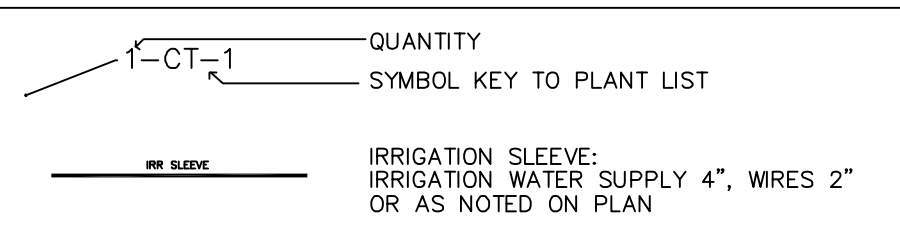
09-26-2014, BUILDING PERMIT

Drawn By: T.H.P.

Project No.: T.B.A.



LANDSCAPE PLAN LEGEND



LANDSCAPE PLANTING PLAN
 1" = 20'

ROCKWALL PLAZA III		9/26/2014		8/12/2010	
PHASE III SUBMITTALS	AREA NO 5	TOTAL	INCHES	AREA NO 5	TOTAL
EVERGREEN TREES	0	0	0	0	0
DEODUCOUS TREES	0	0	0	0	0
MITIGATION TREES	36	5	112	10	40
MITIGATION TREES	0	6			
ORNAMENTAL TREES					
SHRUBS HEDGES	178	0.2	35.6	180	0.2
GROUND COVERS	1477	0.1	147.7	446	0.1
PERENNIALS	306	0.1	30.6	380	0.1
VINES	18	0.2	3.6	0	0
TOTAL ROCKWALL PLAZA III AREA NO 5			329.5		254.6
TREE MITIGATION IN INCHES			147.7		147.7

LANDSCAPE IRRIGATION WARRANTEE

1. LANDSCAPE CONTRACTOR SHALL WARRANTEE ALL PLANT MATERIAL FOR A PERIOD OF ONE YEAR FROM TIME OF FINAL ACCEPTANCE AND PAYMENT OF THE COMPLETED WORK.
 2. IRRIGATION SYSTEM SHALL BE WARRANTED FOR ONE YEAR PARTS AND LABOR FOR NEW ITEMS.

IRRIGATION AFFIDAVIT

ALL REQUIRED LANDSCAPE AREAS SHALL BE PROVIDED WITH AN AUTOMATIC UNDERGROUND IRRIGATION SYSTEM WITH RAIN AND FREEZE SENSORS AND EVAPOTRANSPIRATIVE (ET) WEATHER BASED CONTROLLERS AND SAID IRRIGATION SYSTEM SHALL BE DESIGNED BY A QUALIFIED PROFESSIONAL AND INSTALLED LICENSED IRRIGATOR.

CITY OF ROCKWALL MAINTENANCE NOTE;

MAINTENANCE: THE CURRENT OWNER AND SUBSEQUENT OWNERS OF THE LANDSCAPED PROPERTY, OR MANAGER OR AGENT OF THE OWNER, SHALL BE RESPONSIBLE FOR MAINTENANCE OF ALL THE LANDSCAPED AREAS AND MATERIALS, REQUIRED BUFFER YARD AREAS AND MATERIALS AND REQUIRED SCREENING MATERIALS. SAID AREAS MUST BE MAINTAINED AS TO PRESENT A HEALTHY, NEAT AND ORDERLY APPEARANCE AT ALL TIMES AND SHALL BE KEPT FREE OF REFUSE AND DEBRIS. MAINTENANCE WILL INCLUDE REPLACEMENT OF ALL DEAD PLANT MATERIAL IF THAT MATERIAL WAS USED TO MEET THE REQUIREMENTS OF THE UDC. ALL SUCH PLANTS SHALL BE REPLACED WITHIN (6) SIX MONTHS OF NOTIFICATION, OR BY THE NEXT PLANTING SEASON, WHICH EVER COMES FIRST. A PROPERTY/HOMEOWNERS ASSOCIATION MAY ASSUME RESPONSIBILITY FOR MAINTENANCE OF COMMON AREAS.

ROOT BARRIERS AT UTILITIES AND PAVING EDGES

- NO TREE SHALL BE PLANTED WITHIN 5 FEET OF ALL UTILITIES WATER, SEWER, ELEC, CABLE, STORM, ETC.
- ROOT BARRIERS ARE REQUIRED ON ALL TREES WITHIN UTILITY EASEMENTS AND AT EDGE OF PAVING WITHIN 5 FEET. PROVIDE ON ALL TREES SHOWN, UNLESS NOTED
- DEEP ROOT BARRIERS, 1-800-458-7668, INSTALL UB-48-2 PER SPECIFICATIONS AT EACH TREE ON SIDE OF PAVING OR UTILITY. INCLUDE 4" WIDE TRENCH OF 3/4" DRAIN GRAVEL ON OUT SIDE OF BARRIER, 24" DEEP. BARRIER TO EXTEND 1" ABOVE GRADE.

SELECTED PLANT LIST

EVERGREEN TREES	COMMON NAME	BOTANICAL NAME	SIZE
TE-1	ELDERICA PINE	QUERCUS VIRGINIANA	45 GAL. 3.0"-3.5" CAL. 10-12 FT. HIGH, MATCHED FULL ROUND HEADS
TE-2	THORNLESS HONEYLOCUST	QUERCUS VIRGINIANA	45 GAL. 3.0"-3.5" CAL. 10-12 FT. HIGH, MATCHED FULL ROUND HEADS
TE-3	BAIRD CYPRESS	QUERCUS VIRGINIANA	45 GAL. 3.0"-3.5" CAL. 10-12 FT. HIGH, MATCHED FULL ROUND HEADS
TE-4	CEDRAR ELM	QUERCUS VIRGINIANA	45 GAL. 3.0"-3.5" CAL. 10-12 FT. HIGH, MATCHED FULL ROUND HEADS
TE-5	CEDRAR ELM	QUERCUS VIRGINIANA	45 GAL. 3.0"-3.5" CAL. 10-12 FT. HIGH, MATCHED FULL ROUND HEADS
TE-6	CEDRAR ELM	QUERCUS VIRGINIANA	45 GAL. 3.0"-3.5" CAL. 10-12 FT. HIGH, MATCHED FULL ROUND HEADS
TE-7	CEDRAR ELM	QUERCUS VIRGINIANA	45 GAL. 3.0"-3.5" CAL. 10-12 FT. HIGH, MATCHED FULL ROUND HEADS
TE-8	CEDRAR ELM	QUERCUS VIRGINIANA	45 GAL. 3.0"-3.5" CAL. 10-12 FT. HIGH, MATCHED FULL ROUND HEADS
TE-9	CEDRAR ELM	QUERCUS VIRGINIANA	45 GAL. 3.0"-3.5" CAL. 10-12 FT. HIGH, MATCHED FULL ROUND HEADS
TE-10	CEDRAR ELM	QUERCUS VIRGINIANA	45 GAL. 3.0"-3.5" CAL. 10-12 FT. HIGH, MATCHED FULL ROUND HEADS
TE-11	CEDRAR ELM	QUERCUS VIRGINIANA	45 GAL. 3.0"-3.5" CAL. 10-12 FT. HIGH, MATCHED FULL ROUND HEADS
TE-12	CEDRAR ELM	QUERCUS VIRGINIANA	45 GAL. 3.0"-3.5" CAL. 10-12 FT. HIGH, MATCHED FULL ROUND HEADS
TE-13	CEDRAR ELM	QUERCUS VIRGINIANA	45 GAL. 3.0"-3.5" CAL. 10-12 FT. HIGH, MATCHED FULL ROUND HEADS
TE-14	CEDRAR ELM	QUERCUS VIRGINIANA	45 GAL. 3.0"-3.5" CAL. 10-12 FT. HIGH, MATCHED FULL ROUND HEADS
TE-15	CEDRAR ELM	QUERCUS VIRGINIANA	45 GAL. 3.0"-3.5" CAL. 10-12 FT. HIGH, MATCHED FULL ROUND HEADS
TE-16	CEDRAR ELM	QUERCUS VIRGINIANA	45 GAL. 3.0"-3.5" CAL. 10-12 FT. HIGH, MATCHED FULL ROUND HEADS
TE-17	CEDRAR ELM	QUERCUS VIRGINIANA	45 GAL. 3.0"-3.5" CAL. 10-12 FT. HIGH, MATCHED FULL ROUND HEADS
TE-18	CEDRAR ELM	QUERCUS VIRGINIANA	45 GAL. 3.0"-3.5" CAL. 10-12 FT. HIGH, MATCHED FULL ROUND HEADS
TE-19	CEDRAR ELM	QUERCUS VIRGINIANA	45 GAL. 3.0"-3.5" CAL. 10-12 FT. HIGH, MATCHED FULL ROUND HEADS
TE-20	CEDRAR ELM	QUERCUS VIRGINIANA	45 GAL. 3.0"-3.5" CAL. 10-12 FT. HIGH, MATCHED FULL ROUND HEADS
TE-21	CEDRAR ELM	QUERCUS VIRGINIANA	45 GAL. 3.0"-3.5" CAL. 10-12 FT. HIGH, MATCHED FULL ROUND HEADS
TE-22	CEDRAR ELM	QUERCUS VIRGINIANA	45 GAL. 3.0"-3.5" CAL. 10-12 FT. HIGH, MATCHED FULL ROUND HEADS
TE-23	CEDRAR ELM	QUERCUS VIRGINIANA	45 GAL. 3.0"-3.5" CAL. 10-12 FT. HIGH, MATCHED FULL ROUND HEADS
TE-24	CEDRAR ELM	QUERCUS VIRGINIANA	45 GAL. 3.0"-3.5" CAL. 10-12 FT. HIGH, MATCHED FULL ROUND HEADS
TE-25	CEDRAR ELM	QUERCUS VIRGINIANA	45 GAL. 3.0"-3.5" CAL. 10-12 FT. HIGH, MATCHED FULL ROUND HEADS
TE-26	CEDRAR ELM	QUERCUS VIRGINIANA	45 GAL. 3.0"-3.5" CAL. 10-12 FT. HIGH, MATCHED FULL ROUND HEADS
TE-27	CEDRAR ELM	QUERCUS VIRGINIANA	45 GAL. 3.0"-3.5" CAL. 10-12 FT. HIGH, MATCHED FULL ROUND HEADS
TE-28	CEDRAR ELM	QUERCUS VIRGINIANA	45 GAL. 3.0"-3.5" CAL. 10-12 FT. HIGH, MATCHED FULL ROUND HEADS
TE-29	CEDRAR ELM	QUERCUS VIRGINIANA	45 GAL. 3.0"-3.5" CAL. 10-12 FT. HIGH, MATCHED FULL ROUND HEADS
TE-30	CEDRAR ELM	QUERCUS VIRGINIANA	45 GAL. 3.0"-3.5" CAL. 10-12 FT. HIGH, MATCHED FULL ROUND HEADS
TE-31	CEDRAR ELM	QUERCUS VIRGINIANA	45 GAL. 3.0"-3.5" CAL. 10-12 FT. HIGH, MATCHED FULL ROUND HEADS
TE-32	CEDRAR ELM	QUERCUS VIRGINIANA	45 GAL. 3.0"-3.5" CAL. 10-12 FT. HIGH, MATCHED FULL ROUND HEADS
TE-33	CEDRAR ELM	QUERCUS VIRGINIANA	45 GAL. 3.0"-3.5" CAL. 10-12 FT. HIGH, MATCHED FULL ROUND HEADS
TE-34	CEDRAR ELM	QUERCUS VIRGINIANA	45 GAL. 3.0"-3.5" CAL. 10-12 FT. HIGH, MATCHED FULL ROUND HEADS
TE-35	CEDRAR ELM	QUERCUS VIRGINIANA	45 GAL. 3.0"-3.5" CAL. 10-12 FT. HIGH, MATCHED FULL ROUND HEADS
TE-36	CEDRAR ELM	QUERCUS VIRGINIANA	45 GAL. 3.0"-3.5" CAL. 10-12 FT. HIGH, MATCHED FULL ROUND HEADS
TE-37	CEDRAR ELM	QUERCUS VIRGINIANA	45 GAL. 3.0"-3.5" CAL. 10-12 FT. HIGH, MATCHED FULL ROUND HEADS
TE-38	CEDRAR ELM	QUERCUS VIRGINIANA	45 GAL. 3.0"-3.5" CAL. 10-12 FT. HIGH, MATCHED FULL ROUND HEADS
TE-39	CEDRAR ELM	QUERCUS VIRGINIANA	45 GAL. 3.0"-3.5" CAL. 10-12 FT. HIGH, MATCHED FULL ROUND HEADS
TE-40	CEDRAR ELM	QUERCUS VIRGINIANA	45 GAL. 3.0"-3.5" CAL. 10-12 FT. HIGH, MATCHED FULL ROUND HEADS
TE-41	CEDRAR ELM	QUERCUS VIRGINIANA	45 GAL. 3.0"-3.5" CAL. 10-12 FT. HIGH, MATCHED FULL ROUND HEADS
TE-42	CEDRAR ELM	QUERCUS VIRGINIANA	45 GAL. 3.0"-3.5" CAL. 10-12 FT. HIGH, MATCHED FULL ROUND HEADS
TE-43	CEDRAR ELM	QUERCUS VIRGINIANA	45 GAL. 3.0"-3.5" CAL. 10-12 FT. HIGH, MATCHED FULL ROUND HEADS
TE-44	CEDRAR ELM	QUERCUS VIRGINIANA	45 GAL. 3.0"-3.5" CAL. 10-12 FT. HIGH, MATCHED FULL ROUND HEADS
TE-45	CEDRAR ELM	QUERCUS VIRGINIANA	45 GAL. 3.0"-3.5" CAL. 10-12 FT. HIGH, MATCHED FULL ROUND HEADS
TE-46	CEDRAR ELM	QUERCUS VIRGINIANA	45 GAL. 3.0"-3.5" CAL. 10-12 FT. HIGH, MATCHED FULL ROUND HEADS
TE-47	CEDRAR ELM	QUERCUS VIRGINIANA	45 GAL. 3.0"-3.5" CAL. 10-12 FT. HIGH, MATCHED FULL ROUND HEADS
TE-48	CEDRAR ELM	QUERCUS VIRGINIANA	45 GAL. 3.0"-3.5" CAL. 10-12 FT. HIGH, MATCHED FULL ROUND HEADS
TE-49	CEDRAR ELM	QUERCUS VIRGINIANA	45 GAL. 3.0"-3.5" CAL. 10-12 FT. HIGH, MATCHED FULL ROUND HEADS
TE-50	CEDRAR ELM	QUERCUS VIRGINIANA	45 GAL. 3.0"-3.5" CAL. 10-12 FT. HIGH, MATCHED FULL ROUND HEADS
TE-51	CEDRAR ELM	QUERCUS VIRGINIANA	45 GAL. 3.0"-3.5" CAL. 10-12 FT. HIGH, MATCHED FULL ROUND HEADS
TE-52	CEDRAR ELM	QUERCUS VIRGINIANA	45 GAL. 3.0"-3.5" CAL. 10-12 FT. HIGH, MATCHED FULL ROUND HEADS
TE-53	CEDRAR ELM	QUERCUS VIRGINIANA	45 GAL. 3.0"-3.5" CAL. 10-12 FT. HIGH, MATCHED FULL ROUND HEADS
TE-54	CEDRAR ELM	QUERCUS VIRGINIANA	45 GAL. 3.0"-3.5" CAL. 10-12 FT. HIGH, MATCHED FULL ROUND HEADS
TE-55	CEDRAR ELM	QUERCUS VIRGINIANA	45 GAL. 3.0"-3.5" CAL. 10-12 FT. HIGH, MATCHED FULL ROUND HEADS
TE-56	CEDRAR ELM	QUERCUS VIRGINIANA	45 GAL. 3.0"-3.5" CAL. 10-12 FT. HIGH, MATCHED FULL ROUND HEADS
TE-57	CEDRAR ELM	QUERCUS VIRGINIANA	45 GAL. 3.0"-3.5" CAL. 10-12 FT. HIGH, MATCHED FULL ROUND HEADS
TE-58	CEDRAR ELM	QUERCUS VIRGINIANA	45 GAL. 3.0"-3.5" CAL. 10-12 FT. HIGH, MATCHED FULL ROUND HEADS
TE-59	CEDRAR ELM	QUERCUS VIRGINIANA	45 GAL. 3.0"-3.5" CAL. 10-12 FT. HIGH, MATCHED FULL ROUND HEADS
TE-60	CEDRAR ELM	QUERCUS VIRGINIANA	45 GAL. 3.0"-3.5" CAL. 10-12 FT. HIGH, MATCHED FULL ROUND HEADS
TE-61	CEDRAR ELM	QUERCUS VIRGINIANA	45 GAL. 3.0"-3.5" CAL. 10-12 FT. HIGH, MATCHED FULL ROUND HEADS
TE-62	CEDRAR ELM	QUERCUS VIRGINIANA	45 GAL. 3.0"-3.5" CAL. 10-12 FT. HIGH, MATCHED FULL ROUND HEADS
TE-63	CEDRAR ELM	QUERCUS VIRGINIANA	45 GAL. 3.0"-3.5" CAL. 10-12 FT. HIGH, MATCHED FULL ROUND HEADS
TE-64	CEDRAR ELM	QUERCUS VIRGINIANA	45 GAL. 3.0"-3.5" CAL. 10-12 FT. HIGH, MATCHED FULL ROUND HEADS
TE-65	CEDRAR ELM	QUERCUS VIRGINIANA	45 GAL. 3.0"-3.5" CAL. 10-12 FT. HIGH, MATCHED FULL ROUND HEADS
TE-66	CEDRAR ELM	QUERCUS VIRGINIANA	45 GAL. 3.0"-3.5" CAL. 10-12 FT. HIGH, MATCHED FULL ROUND HEADS
TE-67	CEDRAR ELM	QUERCUS VIRGINIANA	45 GAL. 3.0"-3.5" CAL. 10-12 FT. HIGH, MATCHED FULL ROUND HEADS
TE-68	CEDRAR ELM	QUERCUS VIRGINIANA	45 GAL. 3.0"-3.5" CAL. 10-12 FT. HIGH, MATCHED FULL ROUND HEADS
TE-69	CEDRAR ELM	QUERCUS VIRGINIANA	45 GAL. 3.0"-3.5" CAL. 10-12 FT. HIGH, MATCHED FULL ROUND HEADS
TE-70	CEDRAR ELM	QUERCUS VIRGINIANA	45 GAL. 3.0"-3.5" CAL. 10-12 FT. HIGH, MATCHED FULL ROUND HEADS
TE-71	CEDRAR ELM	QUERCUS VIRGINIANA	45 GAL. 3.0"-3.5" CAL. 10-12 FT. HIGH, MATCHED FULL ROUND HEADS
TE-72	CEDRAR ELM	QUERCUS VIRGINIANA	45 GAL. 3.0"-3.5" CAL. 10-12 FT. HIGH, MATCHED FULL ROUND HEADS
TE-73	CEDRAR ELM	QUERCUS VIRGINIANA	45 GAL. 3.0"-3.5" CAL. 10-12 FT. HIGH, MATCHED FULL ROUND HEADS
TE-74	CEDRAR ELM	QUERCUS VIRGINIANA	45 GAL. 3.0"-3.5" CAL. 10-12 FT. HIGH, MATCHED FULL ROUND HEADS
TE-75	CEDRAR ELM	QUERCUS VIRGINIANA	45 GAL. 3.0"-3.5" CAL. 10-12 FT. HIGH, MATCHED FULL ROUND HEADS
TE-76	CEDRAR ELM	QUERCUS VIRGINIANA	45 GAL. 3.0"-3.5" CAL. 10-12 FT. HIGH, MATCHED FULL ROUND HEADS
TE-77	CEDRAR ELM	QUERCUS VIRGINIANA	45 GAL. 3.0"-3.5" CAL. 10-12 FT. HIGH, MATCHED FULL ROUND HEADS
TE-78	CEDRAR ELM	QUERCUS VIRGINIANA	45 GAL. 3.0"-3.5" CAL. 10-12 FT. HIGH, MATCHED FULL ROUND HEADS
TE-79	CEDRAR ELM	QUERCUS VIRGINIANA	45 GAL. 3.0"-3.5" CAL. 10-12 FT. HIGH, MATCHED FULL ROUND HEADS
TE-80	CEDRAR ELM	QUERCUS VIRGINIANA	45 GAL. 3.0"-3.5" CAL. 10-12 FT. HIGH, MATCHED FULL ROUND HEADS
TE-81	CEDRAR ELM	QUERCUS VIRGINIANA	45 GAL. 3.0"-3.5" CAL. 10-12 FT. HIGH, MATCHED FULL ROUND HEADS
TE-82	CEDRAR ELM	QUERCUS VIRGINIANA	45 GAL. 3.0"-3.5" CAL. 10-12 FT. HIGH, MATCHED FULL ROUND HEADS
TE-83	CEDRAR ELM	QUERCUS VIRGINIANA	45 GAL. 3.0"-3.5" CAL. 10-12 FT. HIGH, MATCHED FULL ROUND HEADS
TE-84	CEDRAR ELM	QUERCUS VIRGINIANA	45 GAL. 3.0"-3.5" CAL. 10-12 FT. HIGH, MATCHED FULL ROUND HEADS
TE-85	CEDRAR ELM	QUERCUS VIRGINIANA	45 GAL. 3.0"-3.5" CAL. 10-12 FT. HIGH, MATCHED FULL ROUND HEADS
TE-86	CEDRAR ELM	QUERCUS VIRGINIANA	45 GAL. 3.0"-3.5" CAL. 10-12 FT. HIGH, MATCHED FULL ROUND HEADS
TE-87	CEDRAR ELM	QUERCUS VIRGINIANA	45 GAL. 3.0"-3.5" CAL. 10-12 FT. HIGH, MATCHED FULL ROUND HEADS
TE-88	CEDRAR ELM	QUERCUS VIRGINIANA	45 GAL. 3.0"-3.5" CAL. 10-12 FT. HIGH, MATCHED FULL ROUND HEADS
TE-89	CEDRAR ELM	QUERCUS VIRGINIANA	45 GAL. 3.0"-3.5" CAL. 10-12 FT. HIGH, MATCHED FULL ROUND HEADS
TE-90	CEDRAR ELM	QUERCUS VIRGINIANA	45 GAL. 3.0"-3.5" CAL. 10-12 FT. HIGH, MATCHED FULL ROUND HEADS
TE-91	CEDRAR ELM	QUERCUS VIRGINIANA	45 GAL. 3.0"-3.5" CAL. 10-12 FT. HIGH, MATCHED FULL ROUND HEADS
TE-92	CEDRAR ELM	QUERCUS VIRGINIANA	45 GAL. 3.0"-3.5" CAL. 10-12 FT. HIGH, MATCHED FULL ROUND HEADS
TE-93	CEDRAR ELM	QUERCUS VIRGINIANA	45 GAL. 3.0"-3.5" CAL. 10-12 FT. HIGH, MATCHED FULL ROUND HEADS
TE-94	CEDRAR ELM	QUERCUS VIRGINIANA	45 GAL. 3.0"-3.5" CAL. 10-12 FT. HIGH, MATCHED FULL ROUND HEADS
TE-95	CEDRAR ELM	QUERCUS VIRGINIANA	45 GAL. 3.0"-3.5" CAL. 10-12 FT. HIGH, MATCHED FULL ROUND HEADS
TE-96	CEDRAR ELM	QUERCUS VIRGINIANA	45 GAL. 3.0"-3.5" CAL. 10-12 FT. HIGH, MATCHED FULL ROUND HEADS
TE-97	CEDRAR ELM	QUERCUS VIRGINIANA	45 GAL. 3.0"-3.5" CAL. 10-12 FT. HIGH, MATCHED FULL ROUND HEADS
TE-98	CEDRAR ELM	QUERCUS VIRGINIANA	45 GAL. 3.0"-3.5" CAL. 10-12 FT. HIGH, MATCHED FULL ROUND HEADS
TE-99	CEDRAR ELM	QUERCUS VIRGINIANA	45 GAL. 3.0"-3.5" CAL. 10-12 FT. HIGH, MATCHED FULL ROUND HEADS
TE-100	CEDRAR ELM	QUERCUS VIRGINIANA	45 GAL. 3.0"-3.5" CAL. 10-12 FT. HIGH, MATCHED FULL ROUND HEADS

CITY OF ROCKWALL LANDSCAPE STANDARDS

SITE DESIGN CRITERIA	REQUIRED	PROVIDED
TOTAL GROSS AREA OF THE SITE		180,138.02 SQ. FT.
A. SCREENING OF SITE LOADING DOCKS	NONE	NONE
B. ACCEPTABLE LANDSCAPE PLANT MATERIAL ON ALL REQUIRED TREES	YES	YES
C. PROTECTION OF ALL LANDSCAPE AREAS BY CONCRETE CURBS OR CURB STOPS	YES	YES
D. IRRIGATION REQUIREMENT, ALL REQUIRED NEW LANDSCAPE AREAS TO BE IRRIGATED WITH UNDER GROUND IRRIGATION SYSTEM	YES	YES
E. RIGHT OF WAY STREET LANDSCAPE BUFFER AREA BETWEEN ROW AND ROAD WAY SURFACES TO BE SEEDED.	YES	YES
H. STREET LANDSCAPE BUFFER REQUIRED IN 20 FOOT WIDE BUFFER, (3) CANOPY AND (4) ACCENT TREE PER 100 FEET RIDGE ROAD	9 CANOPY TREE 12 ACCENT TREE	10 CANOPY TREE 12 ACCENT TREE
I. PARKING LOT LANDSCAPING, MINIMUM 5% OF THE PARKING LOT SHALL BE LANDSCAPE AREA. ALL PARKING SPACES SHALL BE WITHIN 50 FEET OF A LARGE TREE. ADDED PARKING LOT TREES	YES	YES
J. SCREENING OF DUMPSTER AND WALLED BEHIND WALL WITH GATES, REQUIRED	YES	YES
K. REQUIRED LANDSCAPE AREA ON SITE. THE REQUIRED AREA FOR THE LOT IS 15% COMMERCIAL USES. SITE IS APPROX. SITE AREA = 107,210 SQ. FT.	16,082 SQ FT.	30,500 SQ FT. 28.4%
L. PARKING LOTS SHALL PROVIDE 1 TREE PER 10 PARKING SPACES. (44) PARKING SPACES, TREES ALLOCATED PER AREA.	5 TREE	5 TREE

ROCKWALL PLAZA III LAYOUT PLAN
 11,500 SQ. FT. RETAIL BUILDING
 PLAZA AT ROCKWALL
 HIGHWAY I-30
 ROCKWALL, TEXAS



25001 EMERY ROAD, SUITE 400
 CLEVELAND, OH 44128
 TEL (216) 223-3200
 FAX (216) 223-3210
 www.herschmanarchitects.com



Design and construction documents as instruments of service are given in confidence and remain the property of Herschman Architects. The use of this design and these construction documents for purposes other than the specific project named herein is strictly prohibited without expressed written consent of Herschman Architects, Incorporated.

Date	Issue
09-26-2014	BUILDING PERMIT

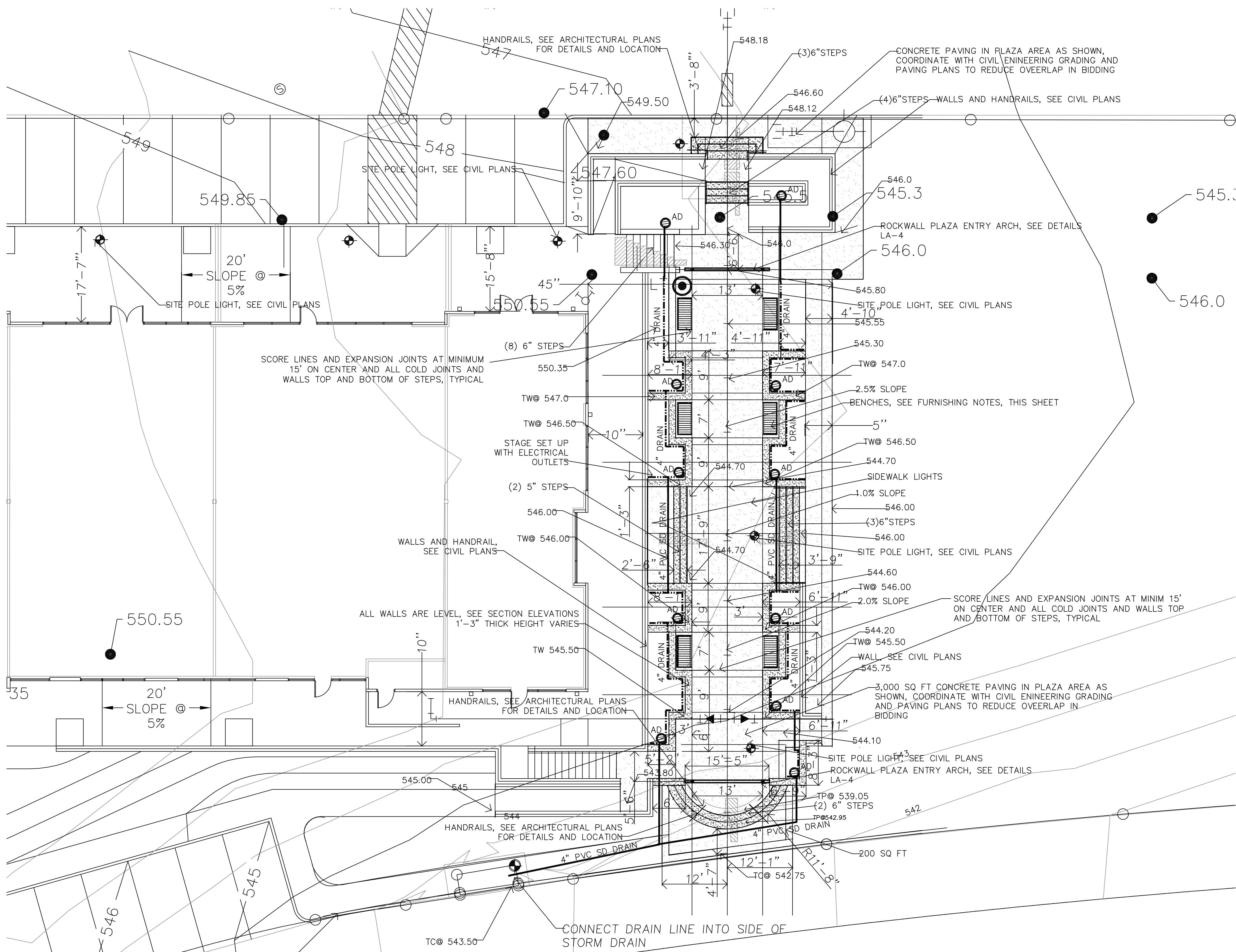
Drawn By: T.H.P.
 Project No.: T.B.A.

ROCKWALL PLAZA III LAYOUT PLAN
 11,500 SQ. FT. RETAIL BUILDING
 PLAZA AT ROCKWALL
 HIGHWAY I-30
 ROCKWALL, TEXAS



HERSCHMAN ARCHITECTS INCORPORATED
 25001 EMERY ROAD, SUITE 400
 CLEVELAND, OH 44128
 TEL (216) 223-3200
 FAX (216) 223-3210
 www.herschmanarchitects.com

LA-3



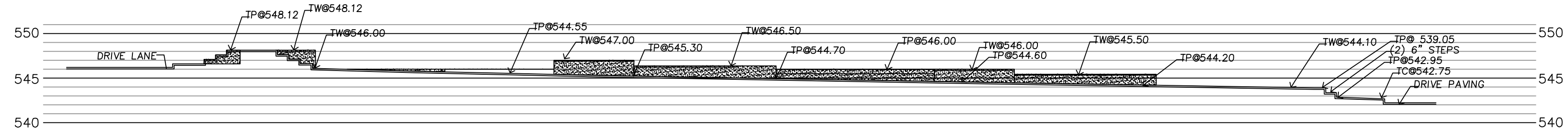
LEGEND GRADING AND DRAINAGE

- SPOT GRADE
- TOP OF WALL GRADE
- SURFACE DRAIN 4" ATRIUM GRATE, PART NO. 78, BLACK, TO FIT TO 4" CORRUGATED DRAIN PIPE, VERTICAL, CONNECT TO WALL DRAINS BELOW.
- PROPOSED 4" N.D.S PERFORATED DRAIN PIPE, SEE DETAILS, WITH SOIL SAVER SOCK, "I" CONNECTIONS FOR ATRIUM DRAINS ABOVE AS SHOWN ON THE PLAN
- PROPOSED 4" PVC SEWER DRAIN PIPE, SLOPE 1/4" PER FOOT MIN. CONNECT TO DOWN SPOUTS WITH FLEX PIPE

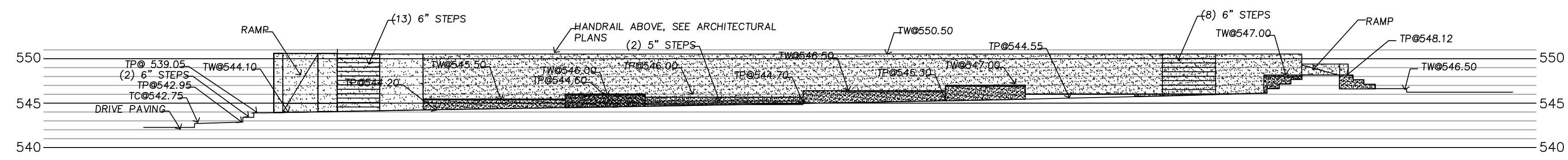
FURNISHING SCHEDULE

ALL ITEMS SPECIFIED ARE TO BE MANUFACTURED BY KEYSTONE RIDGE DESIGNS 1-800-284-8208

- LT LITTER RECEPTACLES, MIDTOWN, MT-3-22, MATTE BLACK, 22 GAL. ROUND
- BENCH, PULLMAN, P-26, 6 FOOT WITH BACK, MATTE BLACK, WITH BOLT DOWN



ELEVATION OF PLAZA SOUTH SIDE

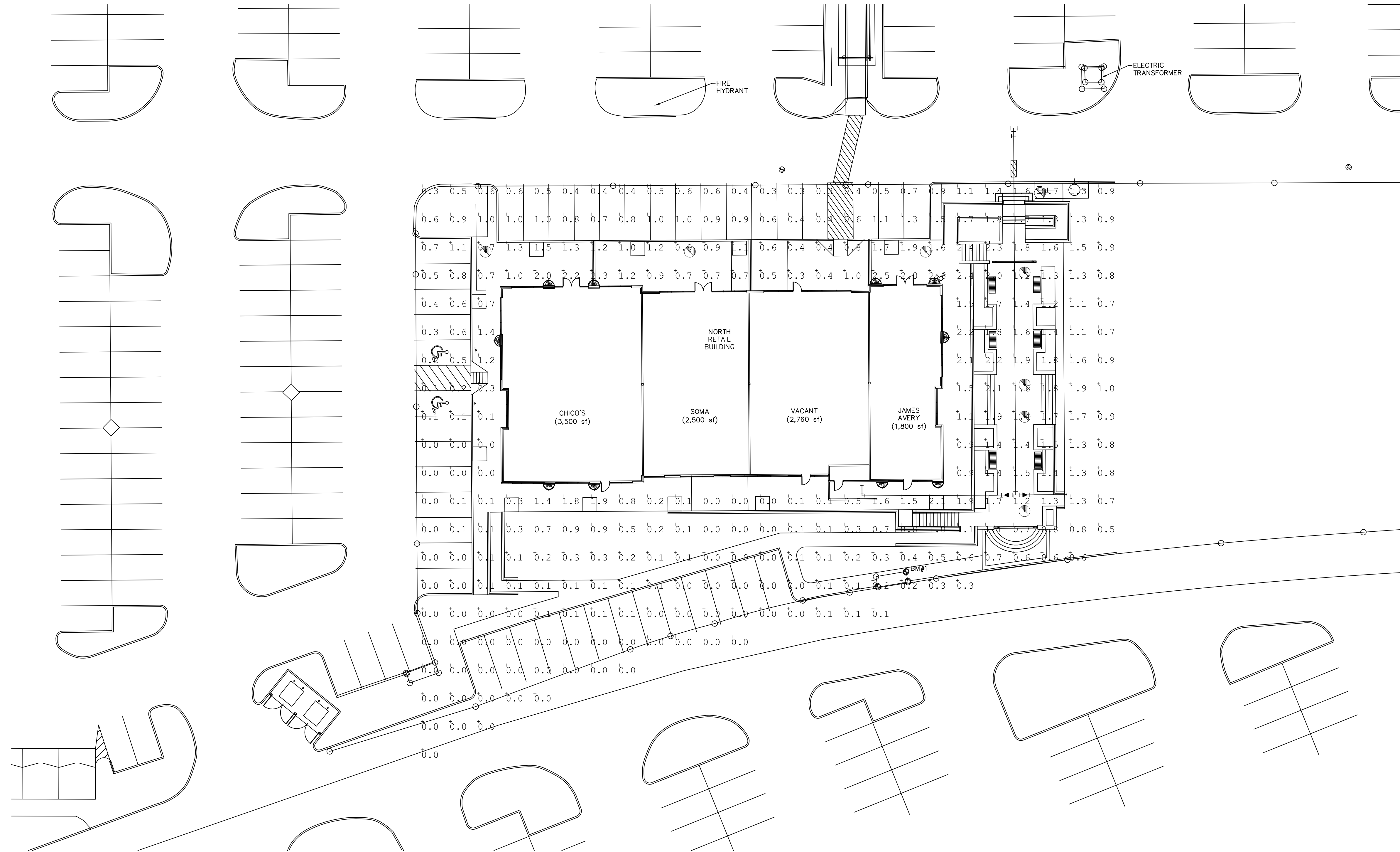


ELEVATION OF PLAZA NORTH SIDE

PLAZA LAYOUT AND GRADING PLAN
 1" = 10'

REVISIONS

REV #	DATE	BY:



BASED ON THE INFORMATION PROVIDED, ALL DIMENSIONS AND LUMINAIRE LOCATIONS SHOWN REPRESENT RECOMMENDED POSITIONS. THE ENGINEER AND/OR ARCHITECT MUST DETERMINE APPLICABILITY OF THE LAYOUT TO EXISTING OR FUTURE FIELD CONDITIONS.

THIS LIGHTING PATTERN REPRESENTS ILLUMINATION LEVELS CALCULATED FROM LABORATORY DATA TAKEN UNDER CONTROLLED CONDITIONS UTILIZING CURRENT INDUSTRY STANDARD LAMP RATINGS IN ACCORDANCE WITH ILLUMINATING ENGINEERING SOCIETY APPROVED METHODS. ACTUAL PERFORMANCE OF ANY MANUFACTURER'S LUMINAIRE MAY VARY DUE TO VARIATION IN ELECTRICAL VOLTAGE, TOLERANCE IN LAMPS AND OTHER VARIABLE FIELD CONDITIONS.

Label	Avg	Max	Min	Avg/Min	Max/Min	PtSpcLr	PtSpcTb
OVERALL SUMMARY	0.73	2.6	0.0	N.A.	N.A.	10	10

Symbol	Qty	Label	Lumens	LLF	Description
⊙	8	I	8500	0.800	WLS-844-3-100-PSMH 12' MOUNTING HEIGHT
⊕	10	J	1710	0.850	MERW-1118-B-U-2Q26-4-WSA 8' MOUNTING HEIGHT @ CENTER

**ROCKWALL PLAZA III
ROCKWALL, TX**

WLS LIGHTING SYSTEMS

Consider the Impact!

1919 WINDSOR PLACE
FORT WORTH, TX 76110
WWW.WLSLIGHTING.COM

WLS-4203F

DATE -9/29/14

SCALE: 1"=20'

800-633-8711

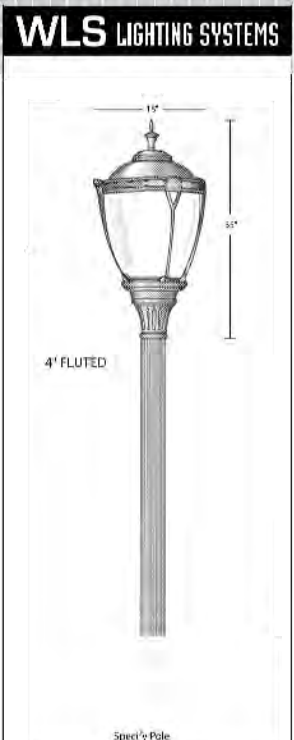
PM:HOLLY

BY: J.P.

SHEET 1 OF 2

REVISIONS

REV #	DATE	BY:
-------	------	-----



15"
35"
4" FLUTED

Specify Pole

844 SERIES

DECORATIVE

SPECIFICATIONS

HOUSING - Heavy wall cast aluminum.

HOOD - Heavy gauge spun aluminum.

GLASS FILTER - Heavy wall crystal, minimum.

GLASS - Clear textured polycarbonate.

BALLAST - H.P.F. (specify voltage)

FINISH - Polyester powder finish coating, (specify color)

ORDERING INFORMATION
SELECT APPROPRIATE CHOICE FROM EACH COLUMN TO FORMULATE ORDER CODE. Refer to example below.

SERIES	LAMP WATT.	LIGHT SOURCE*	LINE VOLTAGE	LUMINAIRE FINISH
844	70W 150W 180W 170W 200W	MH - Metal Halide PMH - Plus Halide MH - Plus Halide HPS - High Pressure Sodium V - Mercury Vapor	120V 208V 240V 277V 480V	BRZ - Bronze BLK - Black PLT - Platinum DGF - DuraGrip WHT - White GRN - Green SIL - Silver CST - Custom Color

844 175 PMH MT BRZ

EXAMPLE ORDER: **WLS-844**

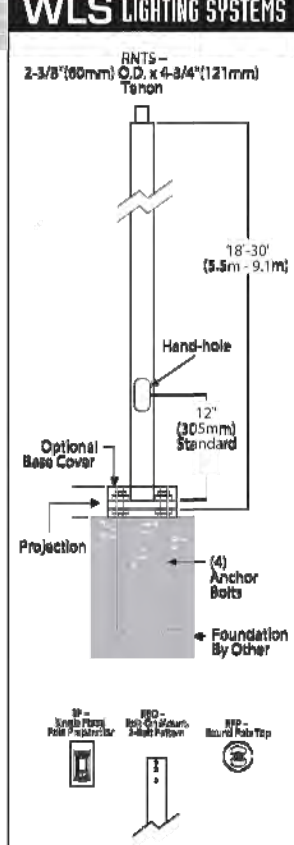
* In accordance with the IEEE Safety Standards and ANSI MFC 210A, luminaire is no longer available in Pole Mount configurations in packages from 100 watts through 100 watts for pole installations. Replacement units for existing fixtures are still available.

Approved By: _____ Project Name: _____

Location: _____ Date: _____


Consider the Impact!

P.O. Box 100519 | Fort Worth, TX 76119 | www.wslighting.com
 Specifications subject to change without notice. 08.21 Rev. 0/00



18'-30"
(5.5m - 9.1m)

12" (305mm) Standard

Hand-hole

Optional Base Cover

Projection

(4) Anchor Bolts

Foundation By Other

RNTS SERIES

ROUND NON-TAPERED STEEL

SPECIFICATIONS

POLE SHAFT - Pole shaft is electro-welded ASTM-A500 Grade C steel tubing with a minimum yield strength of 46,000 psi. On Tension Mount steel pole shaft, tension is 2-3/8" O.D. high-strength pipe. Tension is 4-3/4" in length. Straight poles are 4" and 3" round.

HAND HOLE - Standard hand-hole location is 12" above pole base. Poles 18' and above have a 3" x 6" reinforced hand-hole. Shorter poles have a 2" x 4" non-reinforced hand-hole.

BASE - Pole base is ASTM-A36 hot-rolled steel plate with a minimum yield strength of 36,000 psi. Two-piece square base cover is optional.

ANCHOR BOLTS - Poles are furnished with anchor bolts featuring steel-plated double nuts and washers. Galvanized anchor bolts are optional. Anchor bolts conform to ASTM-A58 with a minimum yield strength of 58,000 psi.

GROUND LUG - Ground lug is standard.

DOUBLE INTERRUPTIBLE - Weatherproof duplex receptacle is optional.

GROUND FAULT CIRCUIT INTERRUPTER - Ground fault circuit interrupter is optional.


FINISH - Each pole is finished with WLS DuraGrip® polyester powder coat finishing process to give the pole an exceptionally attractive appearance. The process electrostatically applies and thermally fuses a polyester powder to the pole. This unique protection process provides an extremely smooth and uniform finish which withstands weather changes without cracking or peeling. DuraGrip® finish features a five-year limited warranty. Standard finish colors available for poles are bronze, black, platinum plus, buff, white, and vibrant green, metallic silver, and grey. Optional DuraGrip® Plus features added protection with a 3.0 to 3.5 mil thickness of polyester-powder coat finish plus an inner coating. This specially designed inner coating is a thermal plastic hydrocarbon resin applied to the inside of the pole to seal and protect against atmospheric and corrosive matter. DuraGrip® Plus finish has a seven-year limited warranty.

DETERMINING THE LUMINAIRE/POLE COMBINATION FOR YOUR APPLICATION

- Select luminaire from Luminaire Ordering Information.
- Select bracket configuration.
- Refer to luminaire EPA chart to determine EPA value.
- Select height of pole.
- Select MPH to match the wind speed in the application area. (Wind speed map located in Appendix)
- Confirm the pole EPA that is equal to or exceeds the luminaire/bracket EPA as was previously determined.

Approved By: _____ Project Name: _____

Location: _____ Date: _____


Consider the Impact!

P.O. Box 100519 | Fort Worth, TX 76119 | 800-633-8711 | Fax: 817.735.4824 | www.wslighting.com
 Specifications subject to change without notice. 07.06.00

MERW-1138/1150

Construction:

- Steel housing and chassis
- Diffuser is .10 extruded white acrylic
- Accent bars and rings are extruded aluminum

Lamps:

- Lamps **INCLUDED** except on linear fixtures

Notes:

- Integral mounting plate keyhole slots top and bottom
- Top and bottom white acrylic lens - standard
- Not all material and accent styles are available - consult factory
- Dimming ballast may be limited with some lamps
- PhotoCell (21) increases fixture depth 1 1/2"
- PhotoCell (21) specify voltage 120v or 277v
- Aluminum lens cover (ALC) eliminates up/down light
- Consult factory for battery backup with linear lamps
- Battery backup may be limited with some lamps
- UL and CUL listed WET location

Types: _____

Job Name: _____



OUTDOOR

CEILING

PENDANT

WALL

ORDERING INFORMATION

Example: **MERW-1138-D-U-2F39-NL-Z3-WSA**

Model	Cage	Voltage	Lamping	Kelvin	Finish	Diffuser	Options
MERW-1138	A	A 120v H.P.F. (Elec)	2T32 (3) T32w	2 2700K	B1 Satin Black	WSA White Smooth Acrylic	(Dimming option - See Notes)
	B	U 277v H.P.F. (Elec)	2T42 (3) 42w	3 3300K	Z1 Satin Bronze	Optional Cage Ascents (See Page 4)	DM10 - Mark 10 Dimming Ballast
	D		2F39 (2) 39w Sat	4 4100K	Z3 Text Bronze	Material	DM17 - Mark 7 Dimming Ballast
	E		2F38 (2) 25w TS NL		Optional (See Price List)		91 120v
	F		2F39 (2) 25w TS NL				92 277v
MERW-1150	G		2T32 (3) T32w		W1 Yolk	P Perforated Screen	Z1 PhotoCell - See Notes
	H		2T42 (3) 42w		W3 Glass White	M Wire Mesh	ALC Aluminum Lens Cover - See Notes
	P		2F39 (2) 39w Sat		W3 Text White	W Wire Pattern	
	G		2F38 (2) 25w TS NL		B2 Text Black	Style	(90 option - See Notes)
	H		2F39 (2) 25w TS NL		T4 Silver Gray	SC Screen Cor Plate	98 - Battery Backup

Approved By: _____ Project Name: _____

Location: _____ Date: _____



26475 Industry Blvd., Waterloo, ON N2L 1J3
 West Coast Sales: 800-325-4449 / 905-257-6289 • Fax: 519-244-7061 / 519-244-7061
 East Coast Sales: 800-310-8091 • Fax: 800-490-9734
 www.lightway.com • sales@lightway.com

BASED ON THE INFORMATION PROVIDED, ALL DIMENSIONS AND LUMINAIRE LOCATIONS SHOWN REPRESENT RECOMMENDED POSITIONS. THE ENGINEER AND/OR ARCHITECT MUST DETERMINE APPLICABILITY OF THE LAYOUT TO EXISTING OR FUTURE FIELD CONDITIONS.

THIS LIGHTING PATTERN REPRESENTS ILLUMINATION LEVELS CALCULATED FROM LABORATORY DATA TAKEN UNDER CONTROLLED CONDITIONS UTILIZING CURRENT INDUSTRY STANDARD LAMP RATINGS IN ACCORDANCE WITH ILLUMINATING ENGINEERING SOCIETY APPROVED METHODS. ACTUAL PERFORMANCE OF ANY MANUFACTURER'S LUMINAIRE MAY VARY DUE TO VARIATION IN ELECTRICAL VOLTAGE, TOLERANCE IN LAMPS AND OTHER VARIABLE FIELD CONDITIONS.