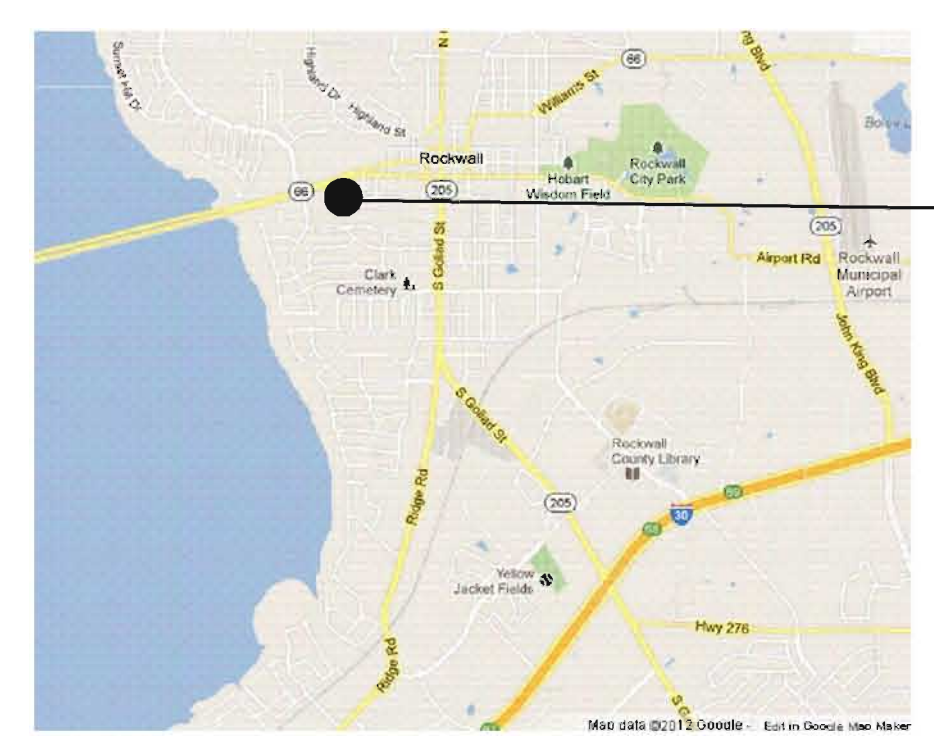
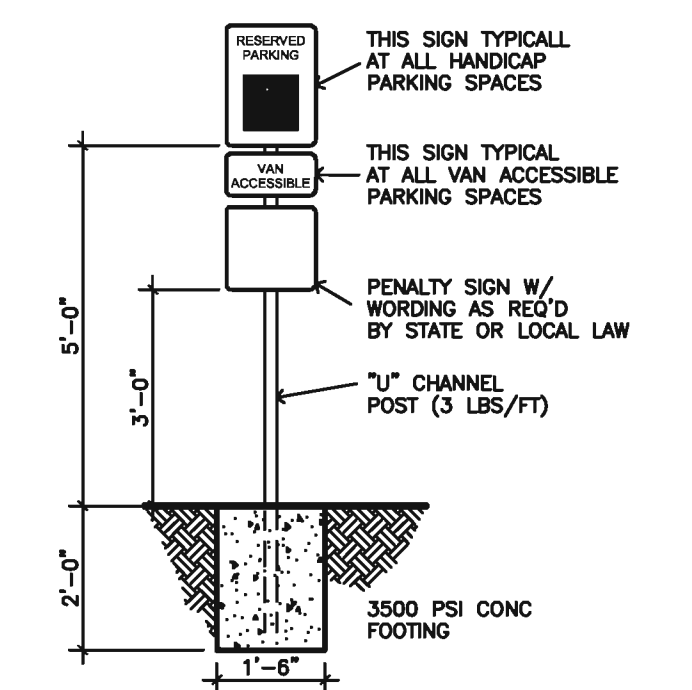


1 site plan  
1" = 30'-0"

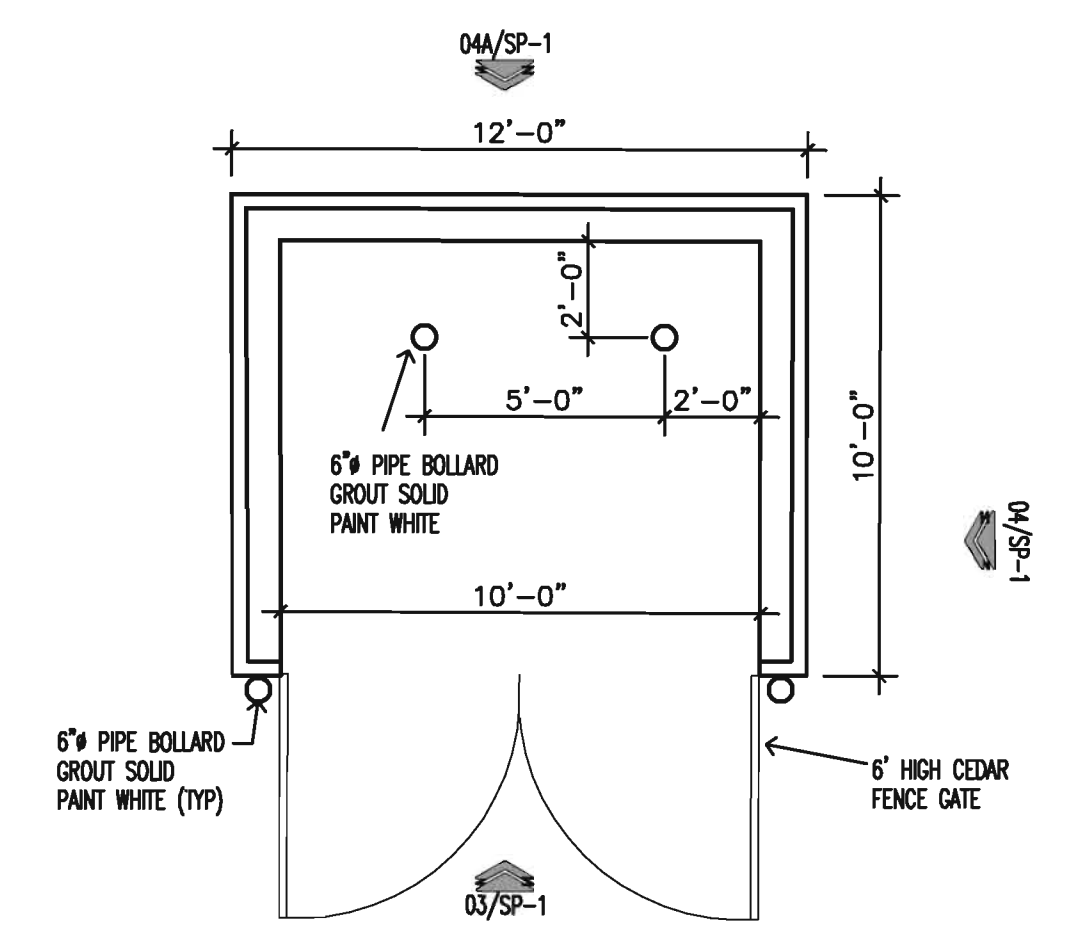
NOTES:  
1. FIRE LANE PAVEMENT TO BE A MIN OF 6" THICK 3600 PSI CONCRETE.



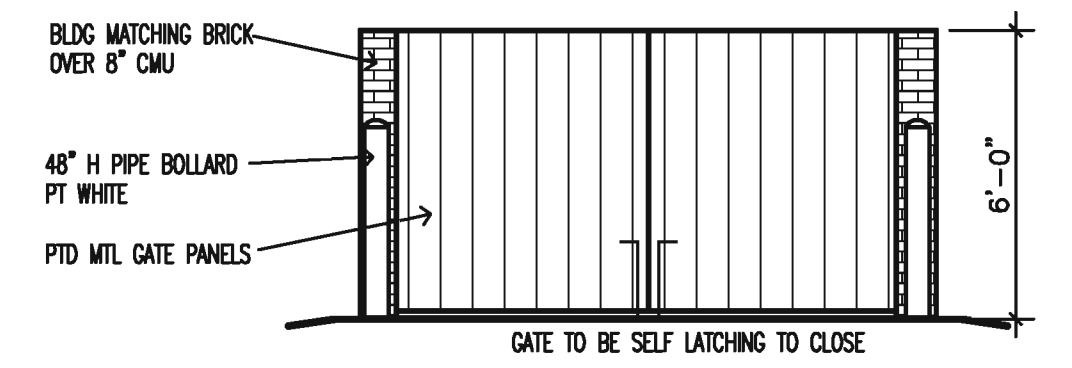
6 location map  
nts



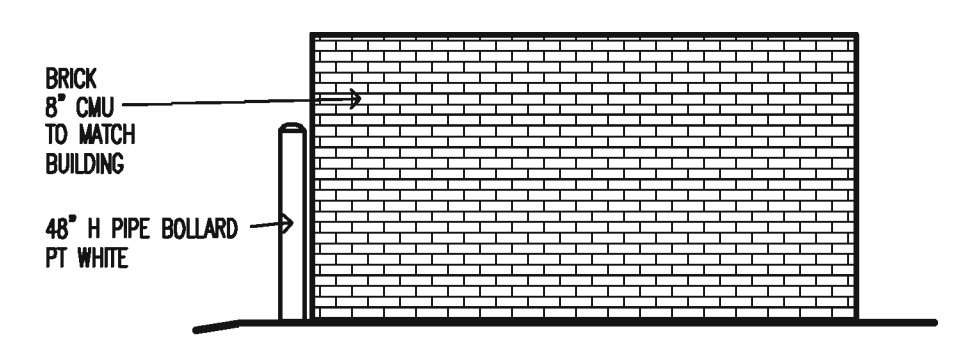
5 handicap parking sign  
SCALE: 1/2" = 1'-0"



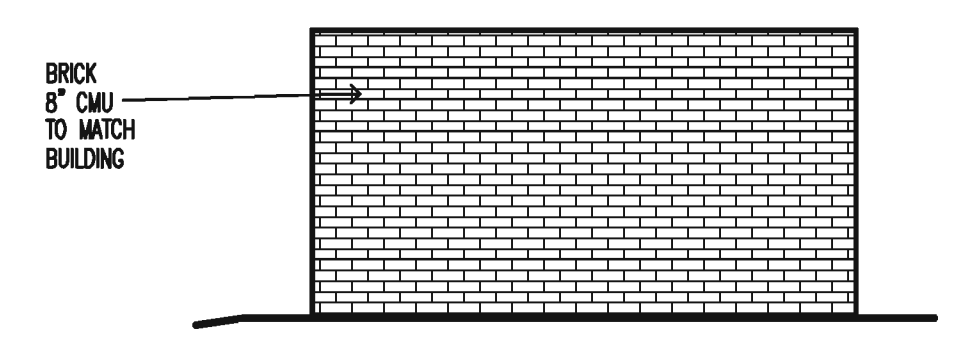
2 dumpster enclosure plan  
SCALE: 1/4" = 1'-0"



3 dumpster elevation  
SCALE: 1/4" = 1'-0"



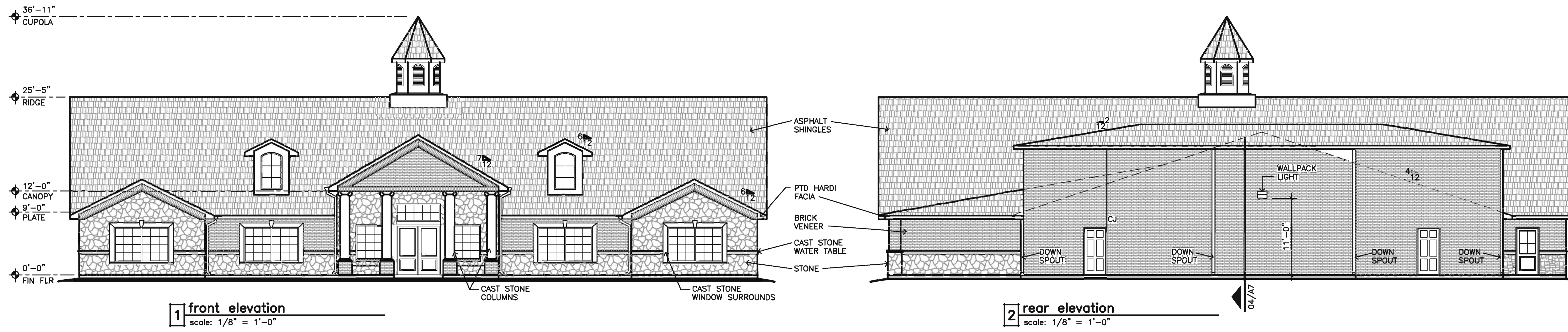
4 dumpster elevation (typ side)  
SCALE: 1/4" = 1'-0"



4A dumpster elevation-rear  
SCALE: 1/4" = 1'-0"

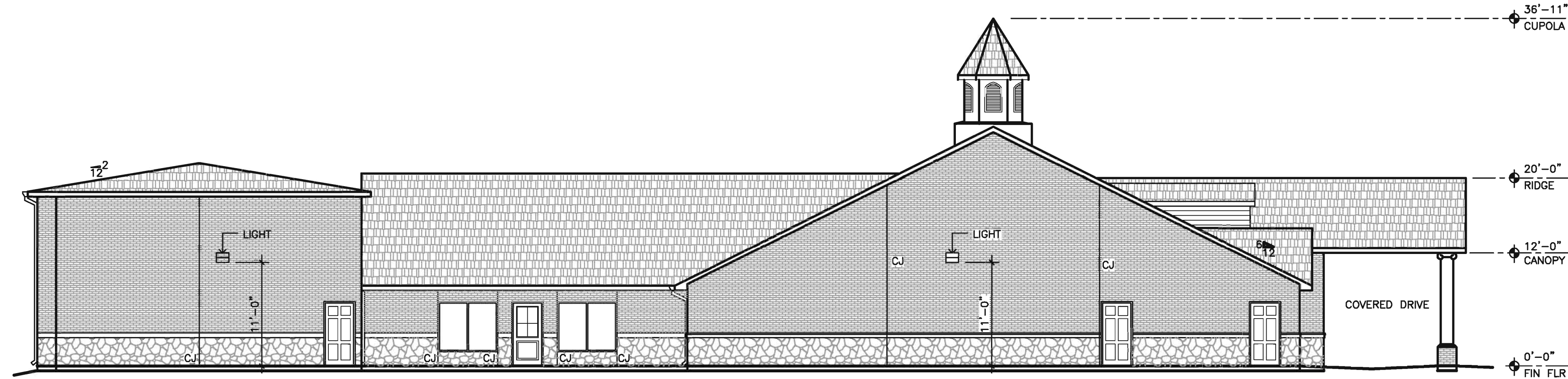
SITE INFORMATION	
LOT AREA	87,120 SF, 2.0 ACRES
BUILDING SQUARE FOOTAGE	1 STORY 10,900 SF
ZONING EXISTING USE	GR, HWY 66 OVERLAY
BUILDING HEIGHT / 1 STORY	25'-5" @ RIDGE, 36'-11" @ CUPOLA
BUILDING USE/TYPE	DAYCARE
LOT COVERAGE	12.5%
IMPERVIOUS SURFACE	22,537 SQ. FT. (DRIVE & PARKING)
FLAT WORK AT BLDG	2,814 SQ. FT.
PARKING REQUIRED:	1/300 SF DEVELOPED SPACE
TOTAL SPACES	10,900 SF / 200 = 36
HANDICAP REQUIRED	2 SPACES
PARKING PROVIDED:	29 SPACES
STANDARD SPACES	2 SPACES
HANDICAP ACCESSIBLE	31 SPACES
TOTAL PARKING REDUCTION TAKEN:	5 SPACES / 14%
LANDSCAPE REQUIRED:	13,068 SQ. FT. (15% TOTAL LOT AREA)
LANDSCAPE PROVIDED:	51,069 SQ. FT.
HOURS OF OPERATION:	6:30AM TO 6:30PM
PEAK DROP OFF TIME:	6:30AM TO 8:00AM
PEAK PICK UP TIME:	4:30PM TO 6:00PM
NUMBER OF STUDENTS	200
NUMBER OF EMPLOYEES	20

PROJECT INFORMATION	
PROJECT:	CHILDRENS PARK 2.0 ACRES, 87,120 SF B.F. BOYDSONT SURVEY, ABSTRACT 14 CITY OF ROCKWALL TRACT 1 WILLIAM H. WAY & DELLENE BURGAMY
OWNER:	RICKI ROSE 941 STEGER TOWNE DRIVE ROCKWALL, TX 75032
LOCATION:	SH 66 ROCKWALL, TEXAS
ARCHITECT:	MATTHEW KING PH: 469-742-0678
DATE:	NOVEMBER 16, 2012 CITY SITE PLAN ISSUE DECEMBER 5, 2012 CITY COMMENTS
<b>CASE#: SP2012-024</b>	
<b>SITE PLAN SP-1</b>	

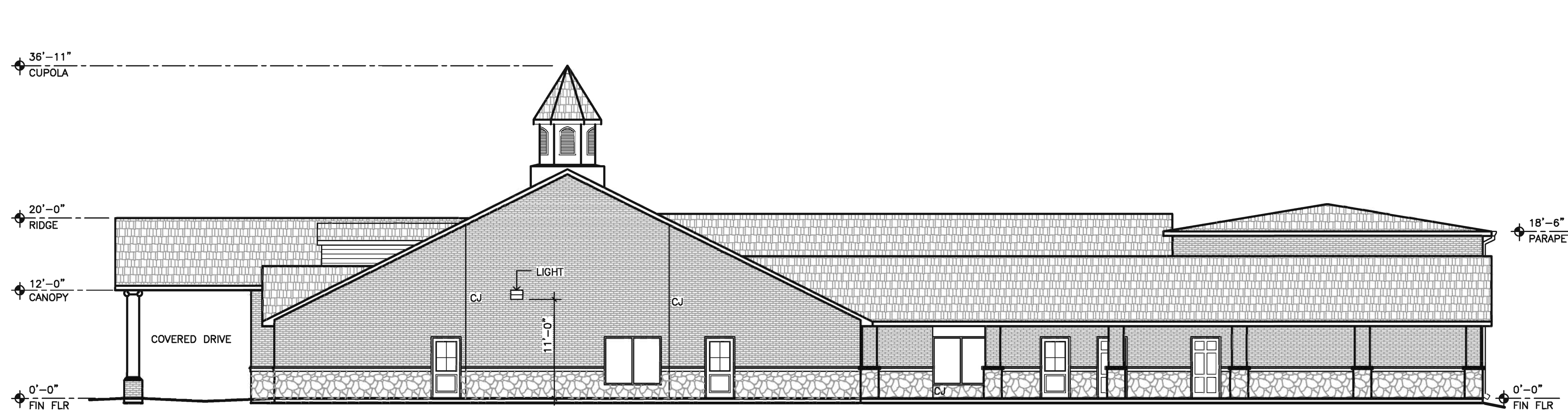


**1 front elevation**  
scale: 1/8" = 1'-0"

**2 rear elevation**  
scale: 1/8" = 1'-0"



**3 left elevation**  
scale: 1/8" = 1'-0"



**4 right elevation**  
scale: 1/8" = 1'-0"



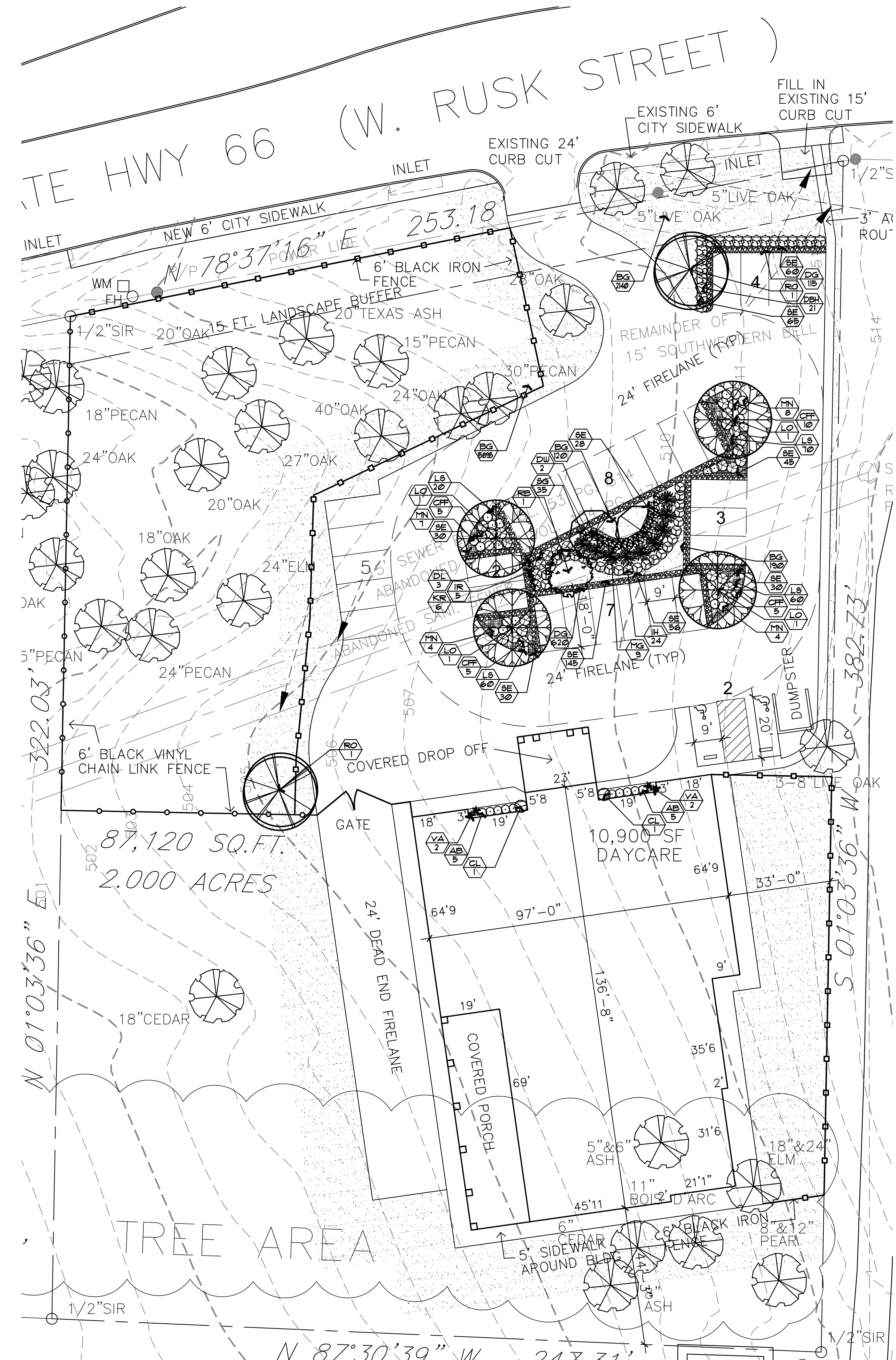
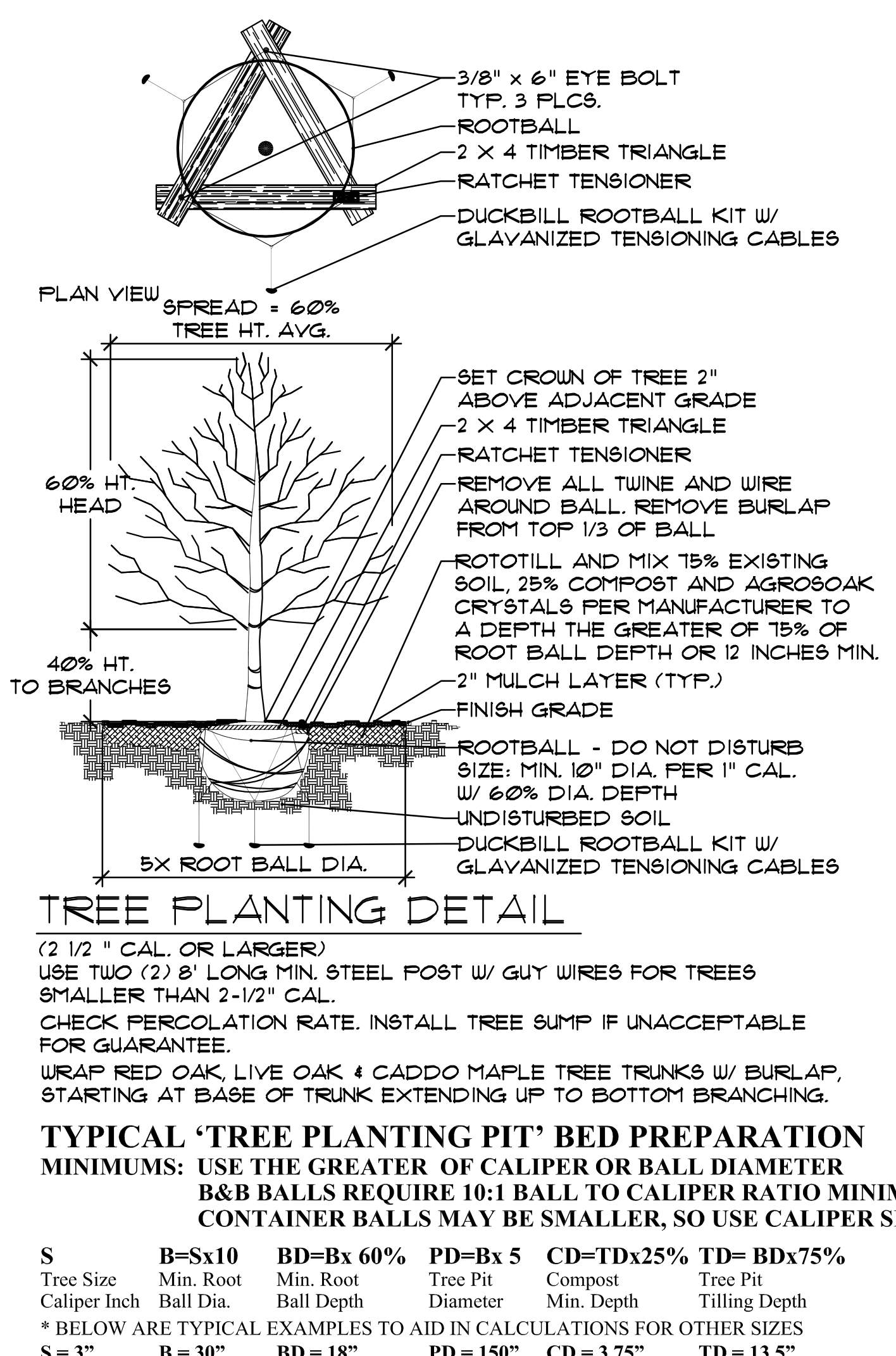
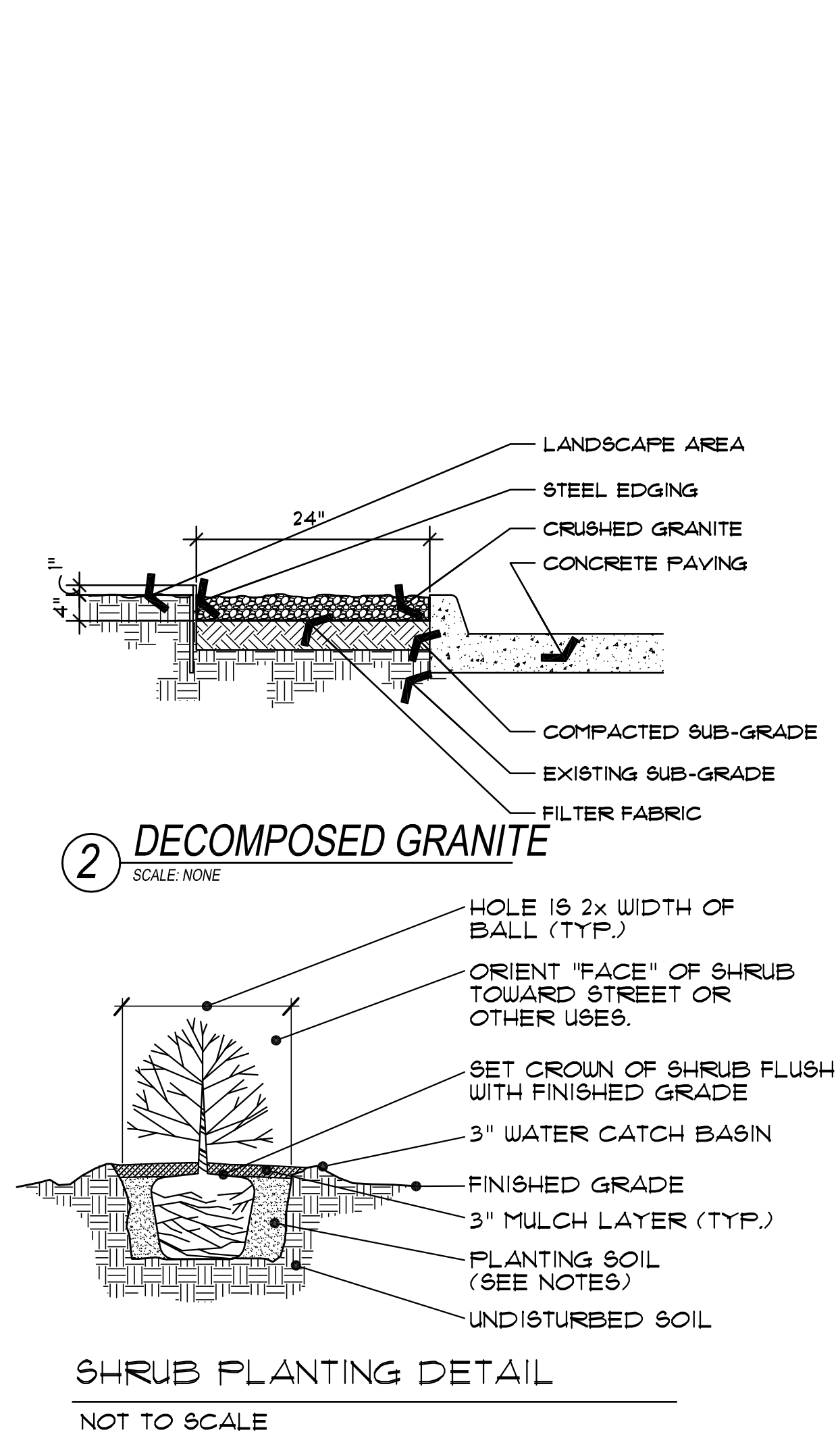
**5 entry elevation**  
scale: 1/8" = 1'-0"

**MASONRY REQUIREMENTS:**  
 90% MASONRY REQ'D - 100% PROVIDED  
 5,884 SQ. FT. TOTAL WALL AREA  
 5,884 SQ. FT. TIMES 90% = 5,296 SQ. FT. MASONRY REQ'D  
 5,884 SQ. FT. TOTAL MASONRY PROVIDED  
 20% STONE REQUIRED. 5,296 SQ. FT. X 20% = 1,059.2 SQ. FT. REQ'D STONE.  
 1,279 SQ. FT. STONE PROVIDED

PROJECT INFORMATION	
PROJECT:	CHILDRENS PARK 2.0 ACRES, 87,120 SF B.F. BOYDSONT SURVEY, ABSTRACT 14 CITY OF ROCKWALL TRACT 1 WILLIAM H. WAY & DELLENE BURGAMY
OWNER:	RICKI ROSE 941 STEGER TOWNE DRIVE ROCKWALL, TX 75032
LOCATION:	SH 68 ROCKWALL, TEXAS
ARCHITECT:	MATTHEW KING PH: 469-742-0678
DATE:	NOVEMBER 16, 2012 CITY SITE PLAN ISSUE DECEMBER 5, 2012 CITY COMMENTS
<b>CASE#:SP2012-024</b> <b>EXTERIOR ELEVATIONS</b>	

PLANT SCHEDULE					
SYM	BOTANICAL NAME	COMMON NAME	QUANTITY	SIZE	NOTES
<b>Trees</b>					
DW	Chilopsis linearis	Desert Willow	2 EA.	6' Ht. Min., 3' Spread Min.	B. & B., Single trunk, Well branched with Central Leader, Speciman
LO	Quercus virginiana	Live Oak	4 EA.	#65, 4" cal. Min., 12' Ht. min., 6' Spread min.	Container, Single trunk, Well branched with Central Leader, 6' branching height
RB	Betula nigra	River Birch	1 EA.	6' Ht. Min., 3' Spread Min.	B. & B., Single trunk, Well branched with Central Leader, Speciman
RO	Quercus shumardii	Shumard's Red Oak	2 EA.	#65, 4" cal. Min., 12' Ht. min., 6' Spread min.	Container, Single trunk, Well branched with Central Leader, 6' branching height
<b>Shrubs</b>					
AB	Abelia grandiflora 'Edward Goucher'	Dwarf Abelia 'Edward Goucher'	10 EA.	#3, 18" min. Ht., 12" min. spread	Container, Well branched full to ground, Plant 30" on center
CFE	Lorapetalum chinense 'Plum Delight'	Chinese Fringe Flower 'Plum Delight'	25 EA.	#3, 30" min. Ht., 20" min. spread	Container, Well branched full to ground, Speciman, Plant 42" on center
CL	Temstroemia indica	Cleyera	2 EA.	#5, 36" min. Ht., 24" min. spread	Container, Well branched full to ground, Speciman
DBH	Ilex cornuta 'Burfordii nana'	Dwarf Burford Holly	21 EA.	#5, 36" min. Ht., 24" min. spread	Container, Well branched full to ground, Speciman, Plant 36" on center
IH	Raphiolepis indica 'Enchantress'	Indian Hawthorn 'Enchantress'	24 EA.	#5, 36" min. Ht., 24" min. spread	Container, Well branched full to ground, Speciman, Plant 36" on center
KR	Rosa x 'Radrazz'	Knock Out Rose 'Radrazz'	6 EA.	#5, 36" min. Ht., 24" min. spread	Container, Well branched full to ground, Plant 48" on center
MG	Muhlenbergia capillaris 'Regal Mist'	Gulf Coast Muhly 'Regal Mist'	9 EA.	#5, 36" min. Ht., 24" min. spread	Container, Well branched full to ground, Plant 60" on center
MN	Nandina domestica 'Moonbay'	Moonbay Nandina	23 EA.	#2, 18" min. Ht., 12" min. spread	Container, Well branched full to ground, Plant 30" on center
<b>Misc</b>					
BG	Cynodon dactylon	Bermuda Grass	18,345 Sq. Ft.	Solid Sod	Staggered tight joints, sand filled and rolled
DG	Decomposed Granite		735 Sq. Ft.	4" Depth	Install per detail, Color as selected by Architect
DL	Hermocallis spp.	Daylily 'Little Business'	3 EA.	4" pot	Full, Plant 18" on center
IR	Iris spp.	Iris - Purple	5 EA.	4" pot	Full, Plant 18" on center
LS	Liriope spicata	Creeping Liriope	210 EA.	4" pot	Full, Plant 12" on center
SE	Ryerson	Steel Edging	435 Ln. Ft.	1/8" x 4" Green	Staked and set 1" above adjacent paving

Landscape Requirements		
ITEM	REQUIRED	PROVIDED
<b>Landscape Buffer</b>		
10 Ft. Width	Yes	Yes
<b>Street Landscape</b>		
One 3" cal. Tree per 50 Ln. Ft. (253.18 Ln. Ft.)	6 Ea.	11 Existing Trees
<b>Parking Lot Landscape</b>		
1 Tree per 10 parking spaces (61 Spaces)	7 Ea.	4 Proposed Live Oak, 2 Proposed Red Oak, 1 Existing Live Oak
80 ft. max from tree trunk	Yes	Yes
<b>Landscape Area</b>		
15% of Site (87,120 Sq. Ft.)	13,068 Sq. Ft.	48,725 Sq. Ft.
50% of Required Landscape Area in Front Yard	6,534 Sq. Ft.	24,602 Sq. Ft.



**CITY SUBMITTAL LANDSCAPE PLAN**

SCALE: 1" = 20'-0"

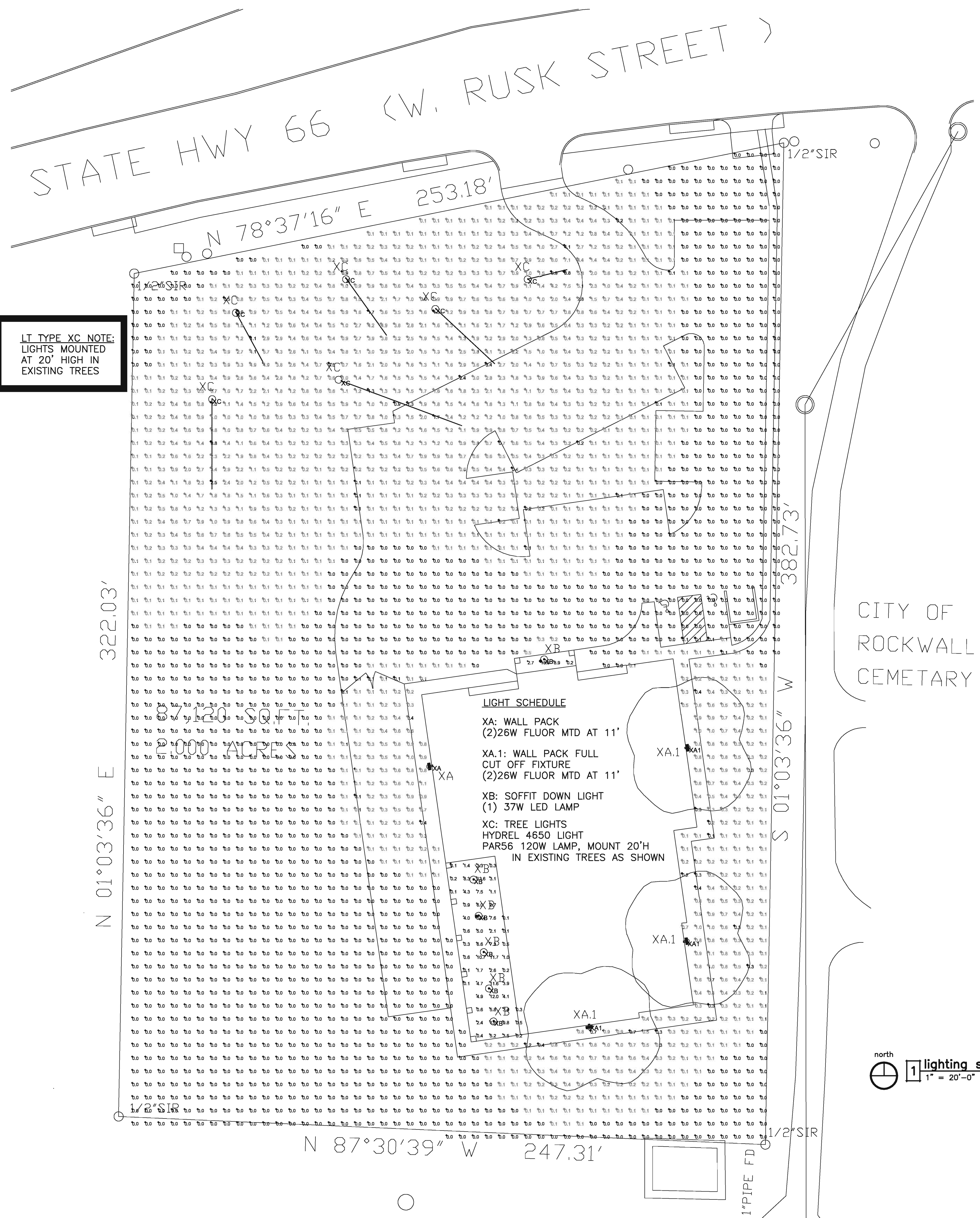
CASE NO.: SP2012-024

PROJECT NAME: Children's Park  
PROJECT NUMBER: 12-048  
REVISIONS:

CHILDREN'S PARK  
S. H. 66 Rusk Avenue  
Rockwall, Texas

REGISTERED LANDSCAPE ARCHITECT  
RICKY D. PETTY  
7720 ALTO CARO DRIVE  
DALLAS, TEXAS 75248  
PHONE: (214) 543-5265  
e-mail: rdpetty@tx.rp.com

TITLE: Landscape Plan  
DATE: November 12, 2012  
SCALE: 1" = 20'-0"  
SHEET: L-1



**LT TYPE XC NOTE:**  
LIGHTS MOUNTED  
AT 20' HIGH IN  
EXISTING TREES

**LIGHT SCHEDULE**

- XA: WALL PACK  
(2)26W FLUOR MTD AT 11'
- XA.1: WALL PACK FULL  
CUT OFF FIXTURE  
(2)26W FLUOR MTD AT 11'
- XB: SOFFIT DOWN LIGHT  
(1) 37W LED LAMP
- XC: TREE LIGHTS  
HYDREL 4650 LIGHT  
PAR56 120W LAMP, MOUNT 20'H  
IN EXISTING TREES AS SHOWN

1 lighting site photometric plan  
1" = 20'-0"

PROJECT INFORMATION	
PROJECT:	CHILDRENS PARK 2.0 ACRES, 87,120 SF B.F. BOYDSONT SURVEY, ABSTRACT 14 CITY OF ROCKWALL TRACT 1 WILLIAM H. WAY & DELLENE BURGAMY
OWNER:	RICKI ROSE 941 STEGER TOWNE DRIVE ROCKWALL, TX 75032
LOCATION:	SH 66 ROCKWALL, TEXAS
ARCHITECT:	MATTHEW KING PH: 469-742-0678
DATE:	NOVEMBER 16, 2012 CITY SITE PLAN ISSUE DECEMBER 5, 2012 CITY COMMENTS

**CASE#:SP2012-024**  
**LIGHTING PHOTOMETRI PLAN**