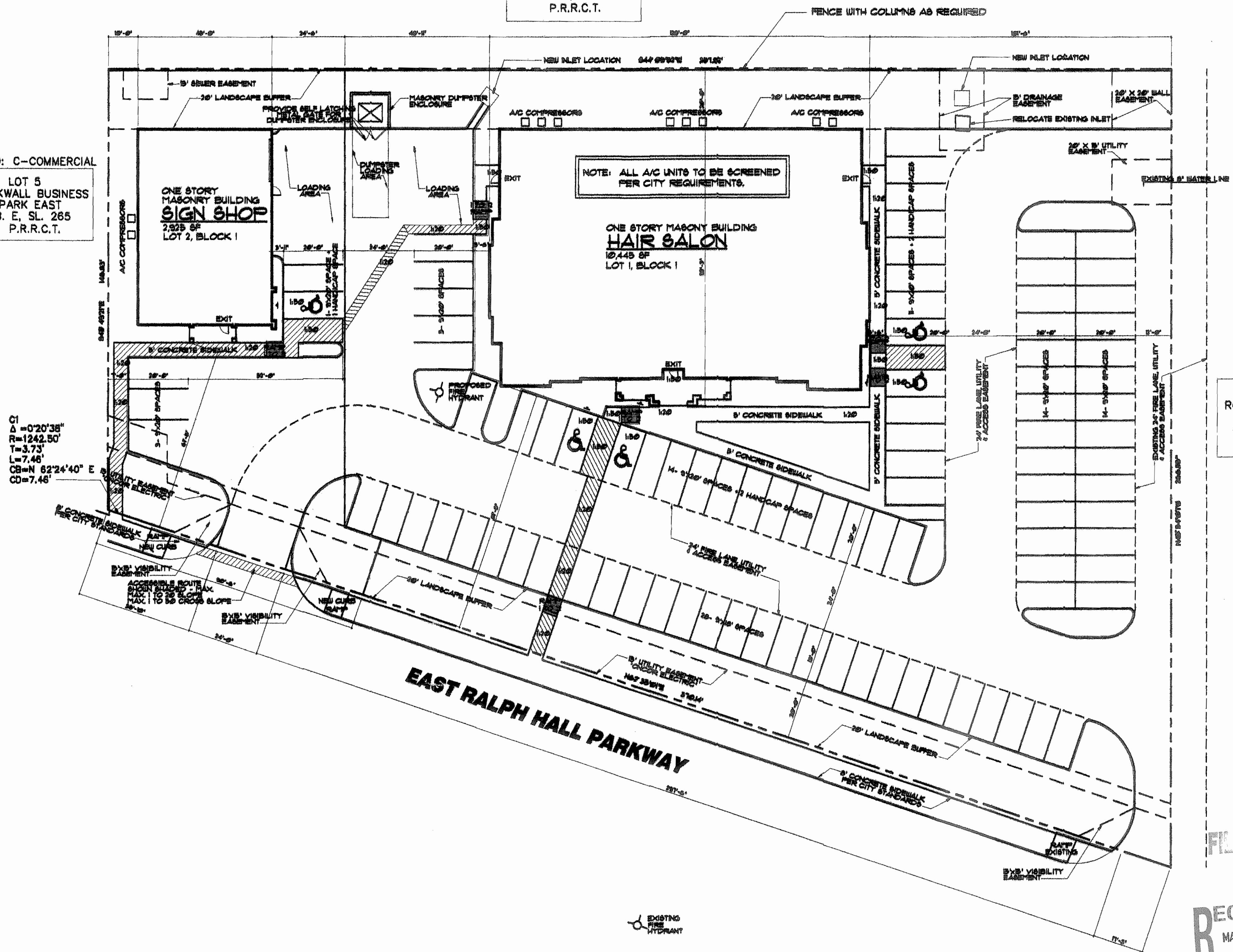


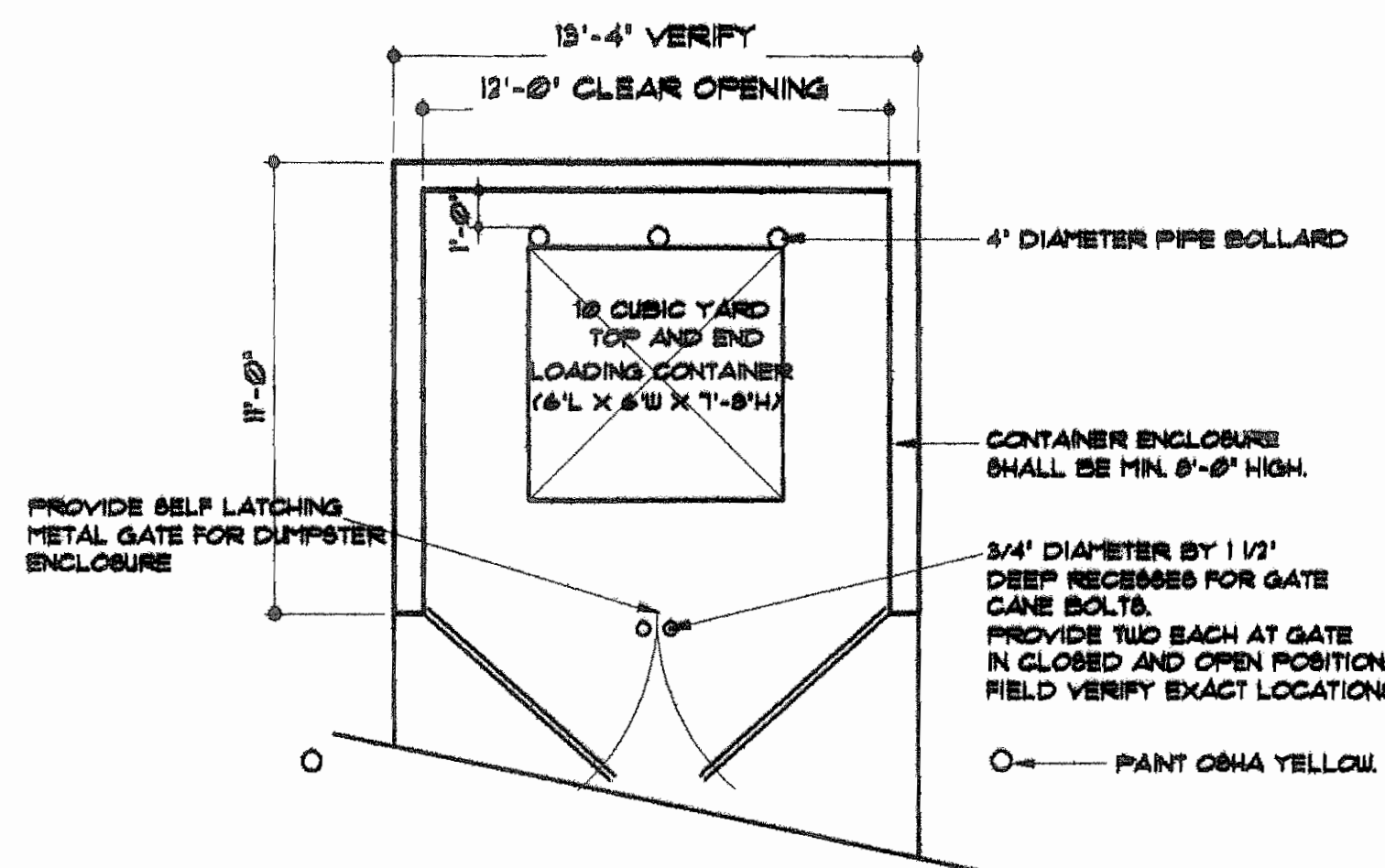
PROJECT LOCATION
VICINITY MAP
NO SCALE

ZONED: C-COMMERCIAL
LOT 5
ROCKWALL BUSINESS PARK EAST
CAB. G, SL. 265
P.R.R.C.T.

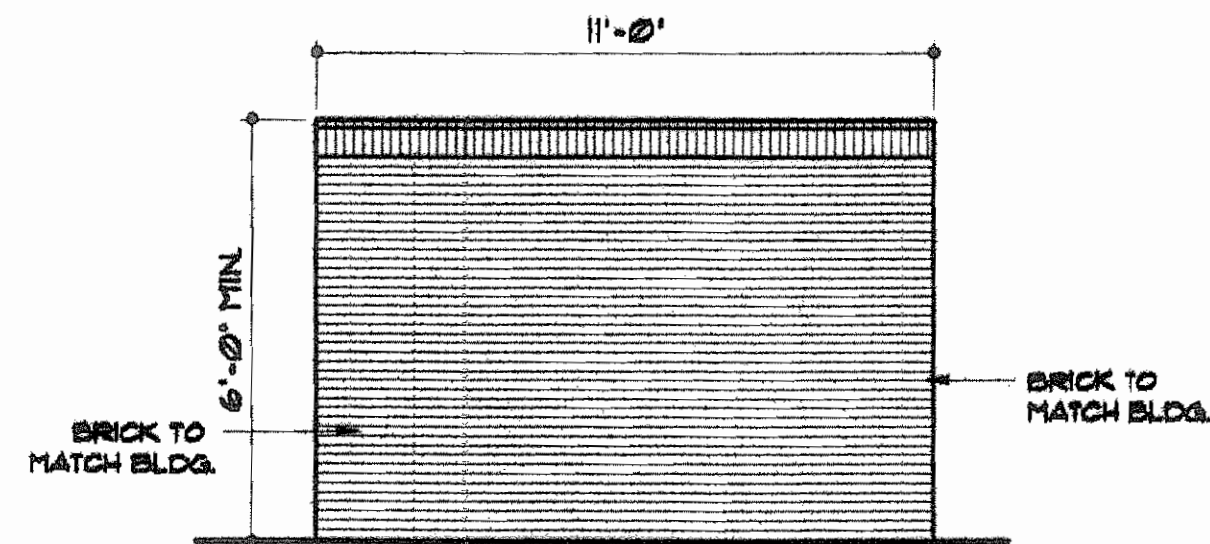
ZONED: PD-54
FLAGSTONE ESTATES
CAB. G, SL. 26
P.R.R.C.T.



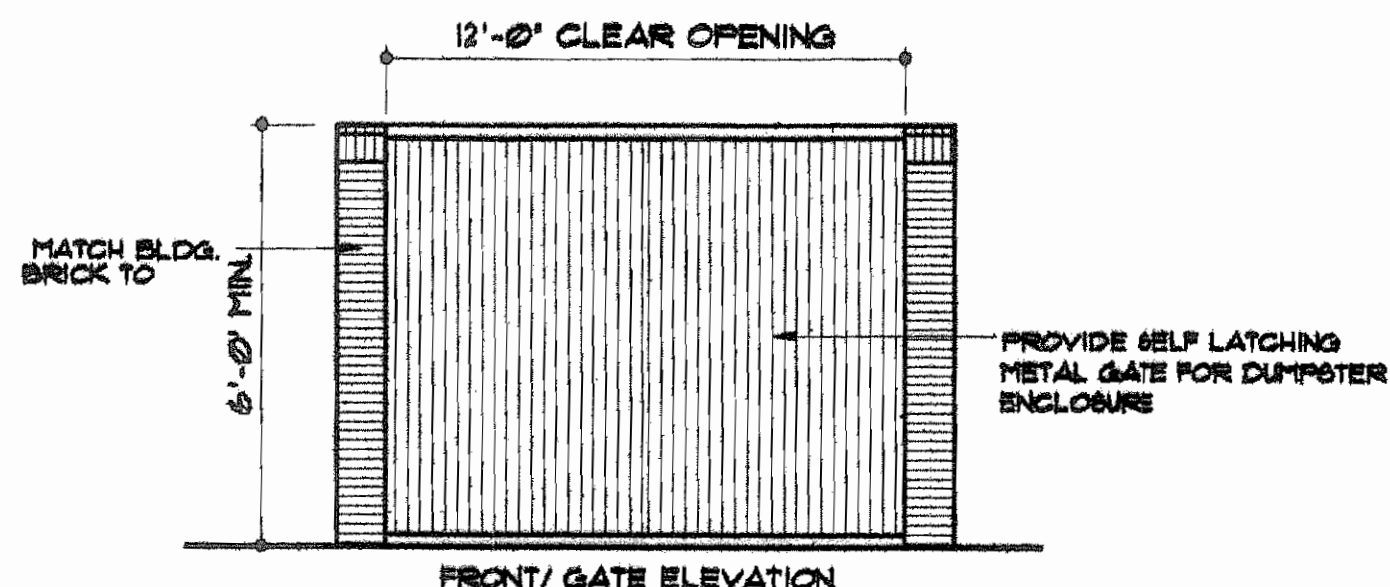
ZONED: PD-54
LOT 1, BLOCK 1
ROCKWALL MEDICAL CENTER
CAB. G, SL. 353
P.R.R.C.T.



CONTAINER ENCLOSURE PLAN
NOT TO SCALE



SIDE ELEVATION



DUMPSTER SCREEN ELEVATIONS
NOT TO SCALE

SITE DATA SUMMARY-LOT 1	
EXISTING ZONING:	"PD-54"
PROPOSED ZONING:	"PD-54"
BUILDING HEIGHT: MEAN HEIGHT	11'-6" (1 STORY)
TOTAL LOT AREA: (1.422 ACRES)	61,060 SF.
TOTAL BUILDING AREA:	10,445 SF.
TOTAL GROSS BUILDING AREA:	10,710 SF.
TOTAL IMPERVIOUS AREA:	46,356 SF.
TOTAL BUILDING AREA:	10,445 SF.
PORCH AREA:	325 SF.
PARKING AREA, DRIVES:	335-00 SF.
SIDEWALKS:	1,991 SF.
**SIDEWALKS IN ROW/NOT INCLUDED IN IMPERVIOUS TOTAL:	2,260 SF.
TOTAL OPEN AREA:	14,704 SF.
TOTAL BUILDING COVERAGE:	17.44%
TOTAL IMPERVIOUS COVERAGE:	75.83%
BUILDING & PARKING COVERAGE:	72.67%
FLOOR AREA RATIO:	17.54%
TOTAL OPEN AREA COVERAGE:	24.07%

SITE DATA SUMMARY-LOT 2	
EXISTING ZONING:	"PD-54"
PROPOSED ZONING:	"PD-54"
BUILDING HEIGHT: MEAN HEIGHT	11'-6" (1 STORY)
TOTAL LOT AREA: (0.281 ACRES)	12,342 SF.
TOTAL BUILDING AREA:	7,925 SF.
TOTAL GROSS BUILDING AREA:	3,011 SF.
TOTAL IMPERVIOUS AREA:	8,898 SF.
TOTAL BUILDING AREA:	7,925 SF.
PORCH AREA:	92 SF.
PARKING AREA, DRIVES:	5,723 SF.
SIDEWALKS:	658 SF.
**SIDEWALKS IN ROW/NOT INCLUDED IN IMPERVIOUS TOTAL:	249 SF.
TOTAL OPEN AREA:	4,044 SF.
TOTAL BUILDING COVERAGE:	73.31%
TOTAL IMPERVIOUS COVERAGE:	68.78%
BUILDING & PARKING COVERAGE:	63.67%
FLOOR AREA RATIO:	23.31%
TOTAL OPEN AREA COVERAGE:	31.25%

DEVELOPMENT PLAN

EXISTING ZONING: "PD-54"
PROPOSED ZONING: "PD-54"
PREFERRED/INMAN ADDITION
LOT 1 - 1.422 ACRES / LOT 2 - 0.281 ACRES
BLOCK 1
EAST RALPH HALL PARKWAY
CITY OF ROCKWALL, ROCKWALL COUNTY, TEXAS

PD PLAN

SCALE: 1"=20'-0"
Project Name & Address:
0 20' 40' 80'

FILE COPY

RECEIVED
MAY 08 2012

SP 2012 008

REVISIONS	BY

HAIR SALON & SIGN SHOP
East Ralph Hall Parkway
Rockwall, Texas 75032

SEE OFFICE FOR PLOTTING
FOR ALL WORK ITEMS
2012
WOOD-STOVALL ARCHITECTS
ARCHITECTS/PLANNERS/ENGINEERS

wood-stovall
architects / designers

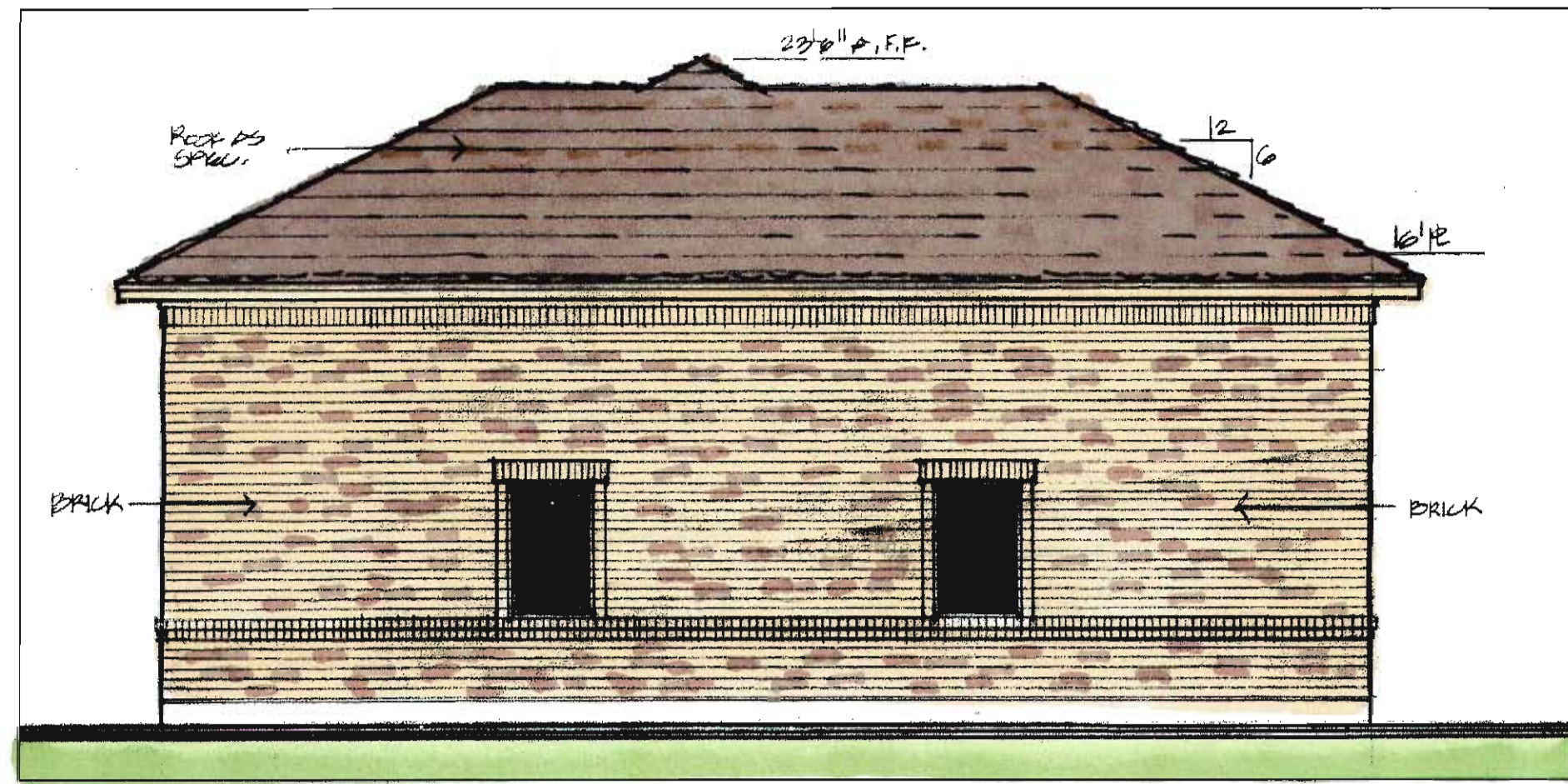
Date: 5-1-12

Drawn:

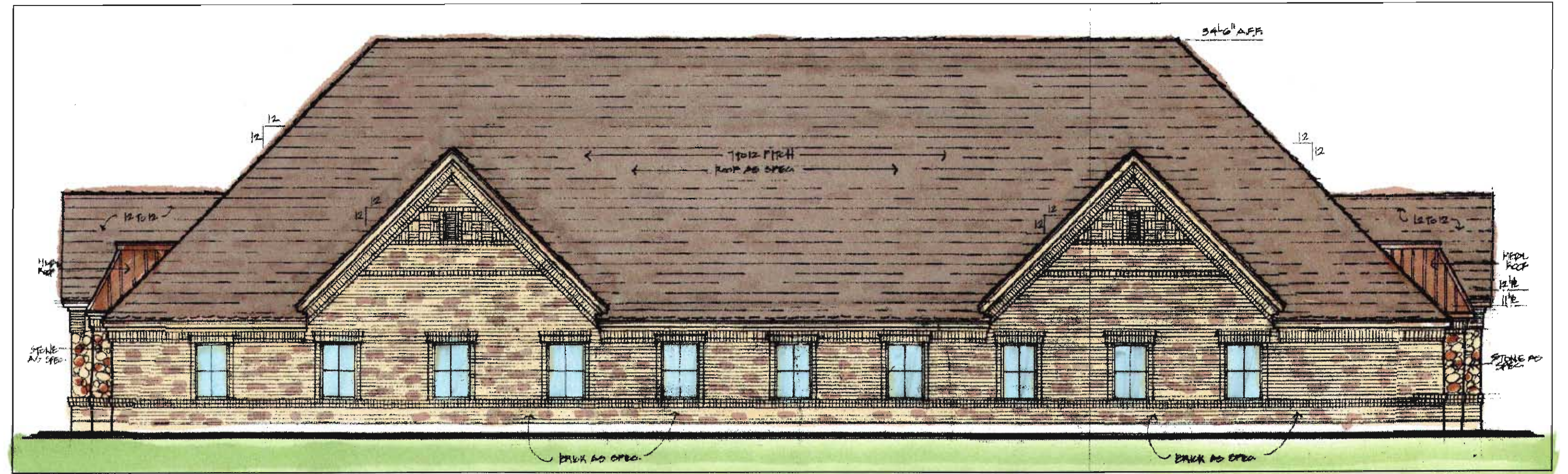
Job:

Sheet:

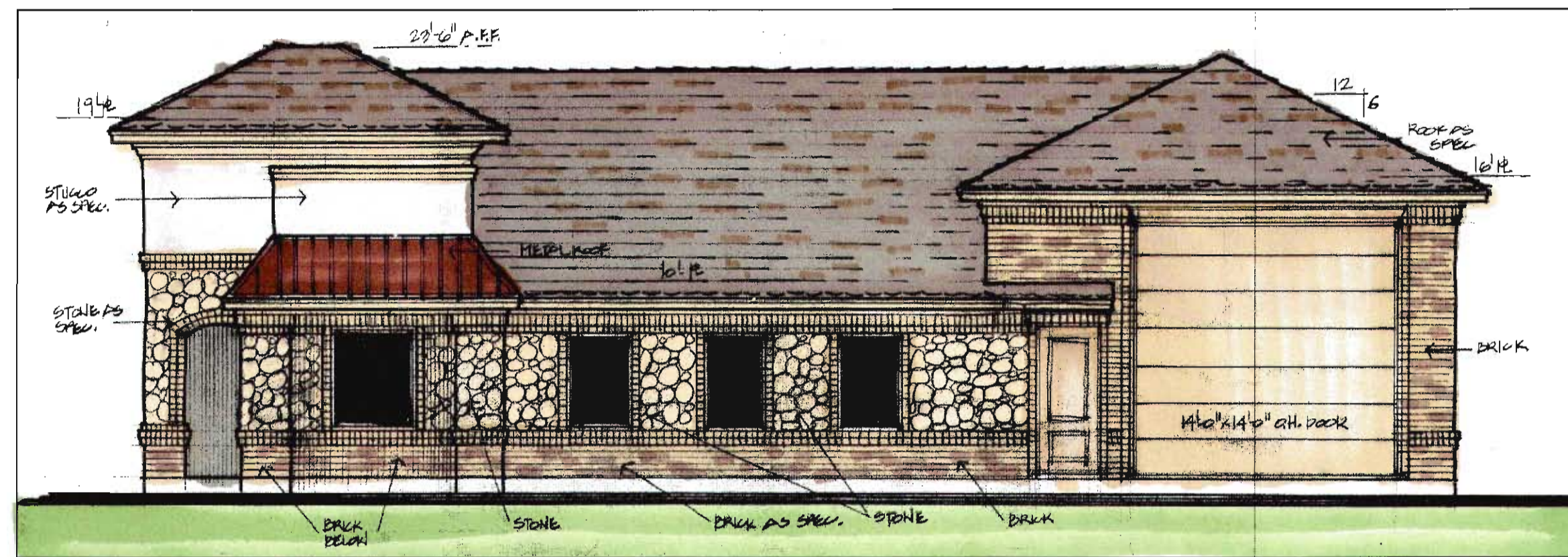
PD1
Of 8 sheets



SIGN SHOP - REAR ELEVATION



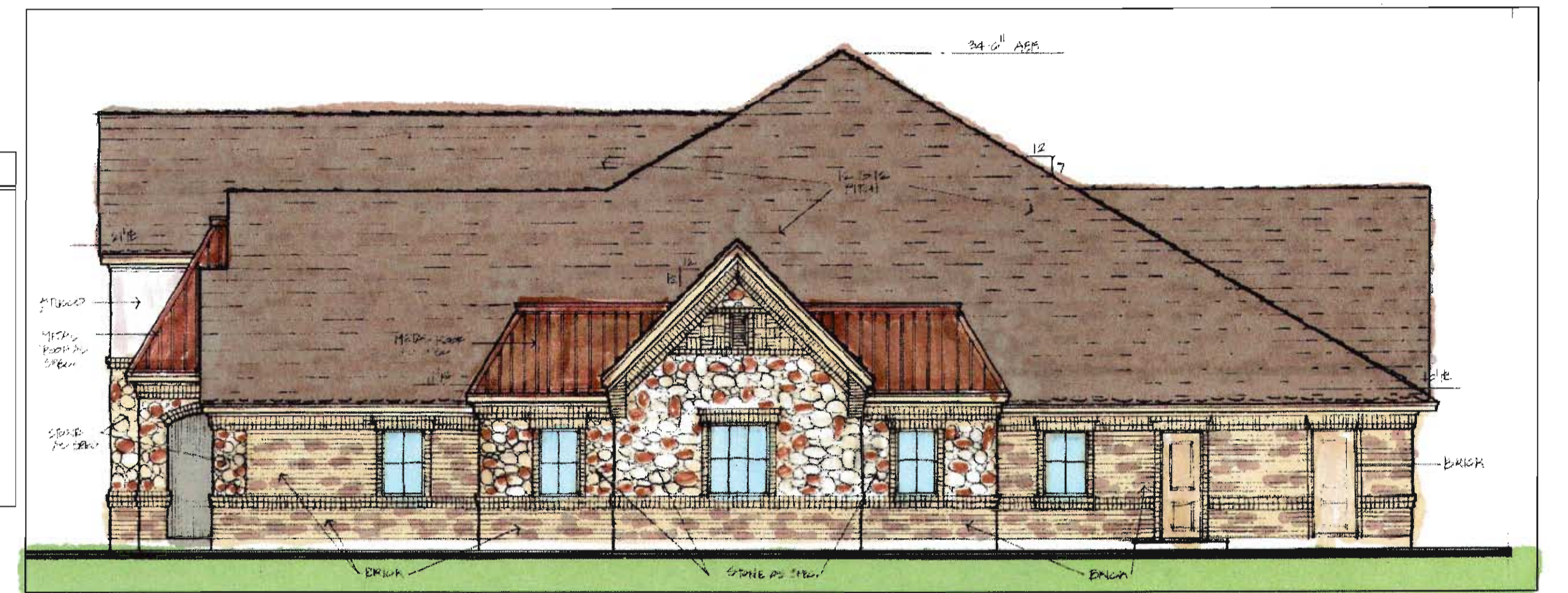
SALON - REAR ELEVATION



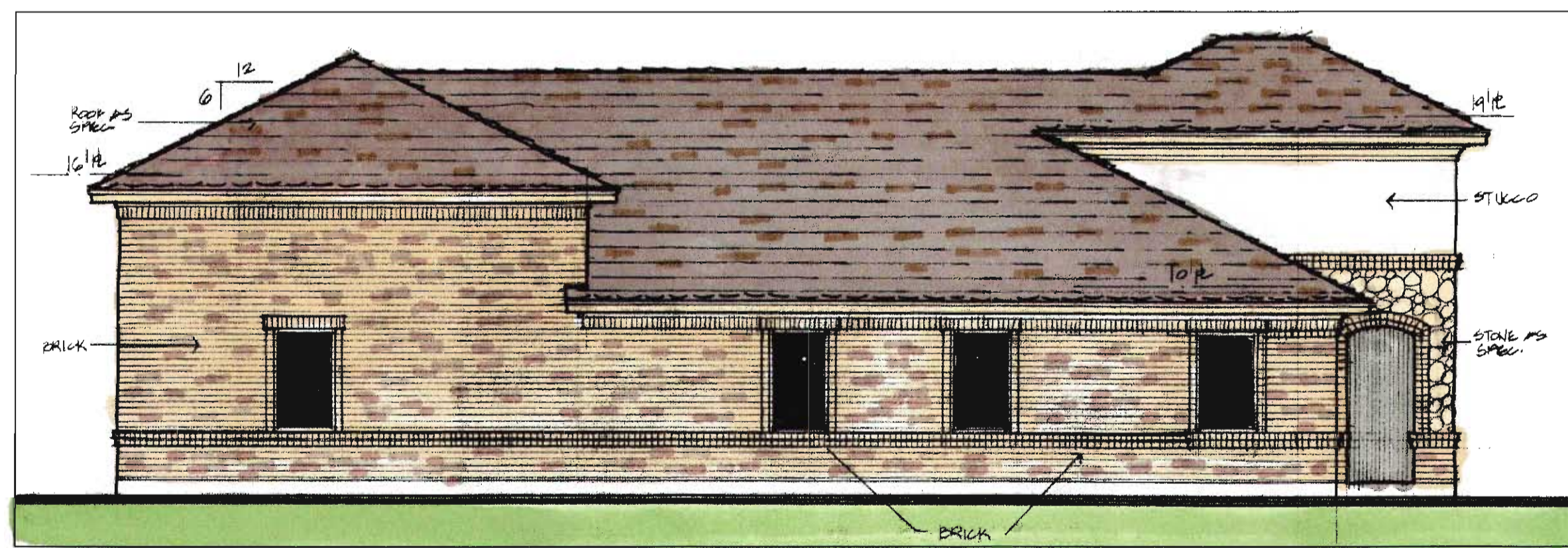
SIGN SHOP - RIGHT SIDE ELEVATION

EXTERIOR ELEVATION REQMTS.

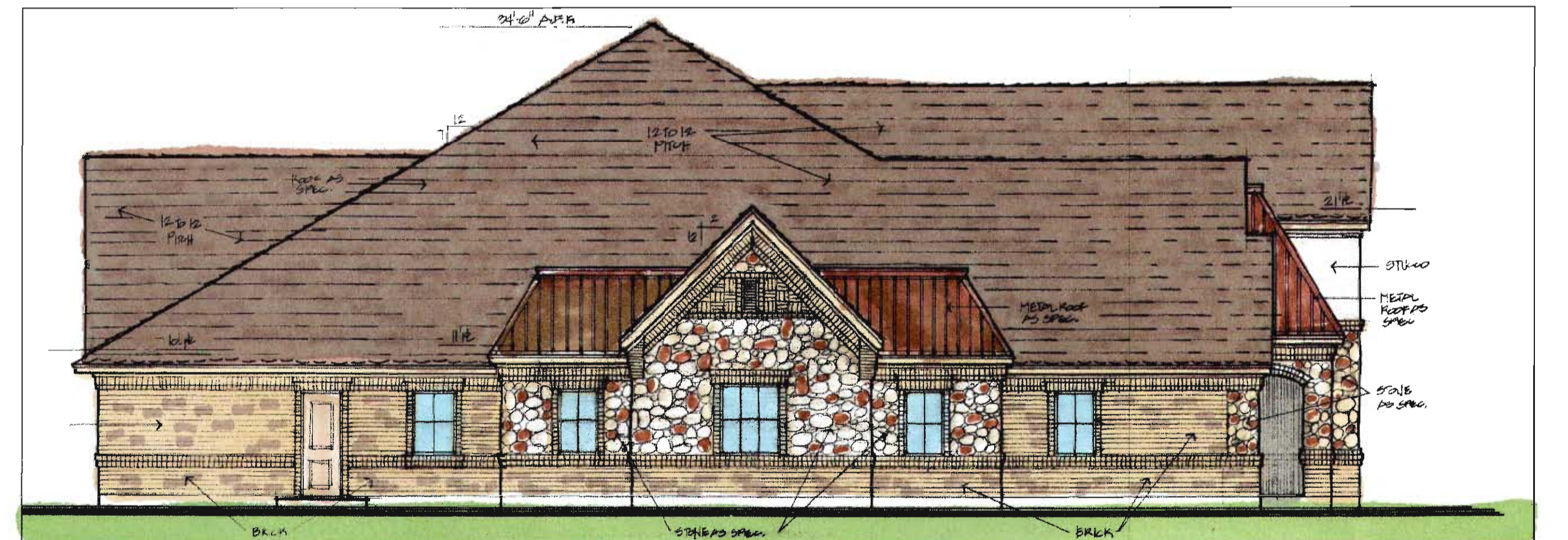
MASONRY REQUIREMENTS:	REQUIRED	PROVIDED
STONE		
HAIR SALON		
FRONT ELEVATION (1,803 SF X 20%)	360 SF	486 SF
SIDE ELEVATIONS (1,035 SF X 20%)	207 SF	248 SF
REAR ELEVATION		(VARIANCE REQUESTED)
SIGN SHOP		
FRONT ELEVATION (626 SF X 20%)	121 SF	136 SF
RIGHT SIDE ELEVATION (663 SF X 20%)	133 SF	141 SF
LEFT SIDE ELEVATION		(VARIANCE REQUESTED)
REAR ELEVATION		(VARIANCE REQUESTED)



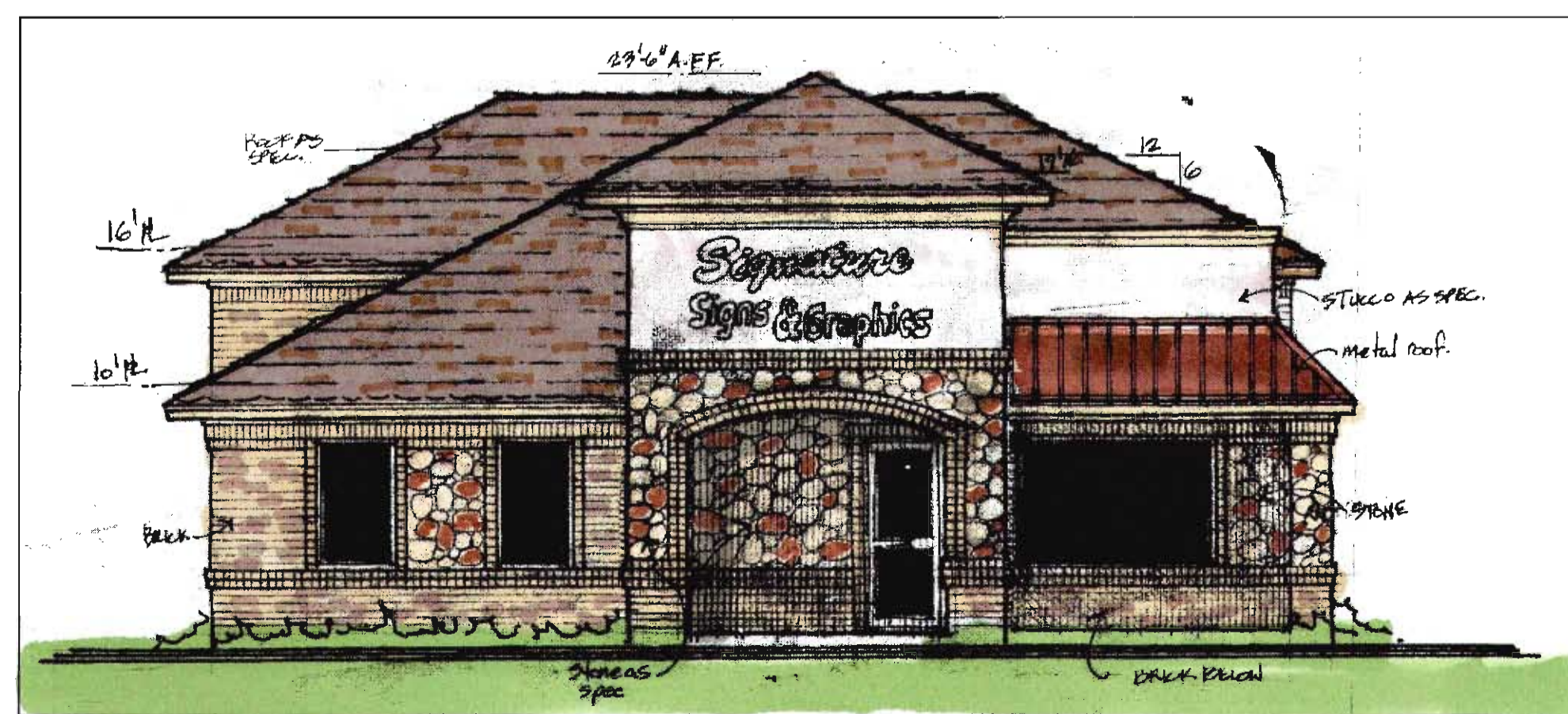
SALON - RIGHT SIDE ELEVATION



SIGN SHOP - LEFT SIDE ELEVATION



SALON - LEFT SIDE ELEVATION



SIGN SHOP - FRONT ELEVATION



SALON - FRONT ELEVATION

REVISIONS	BY

HAIR SALON & SIGN SHOP
Rockwall, Texas

2201 Cobble Lyne pkwy,
suite 140
Rockwall, TX 75087
1470000000
kstovall@woodstovall.com
817-748-8714 office/fax

wood-stovall
architects / designers

Date: 4-3-12
Drawn:
Job:
Sheet
PD2
Of Sheets

SOIL AMENDMENT NOTES

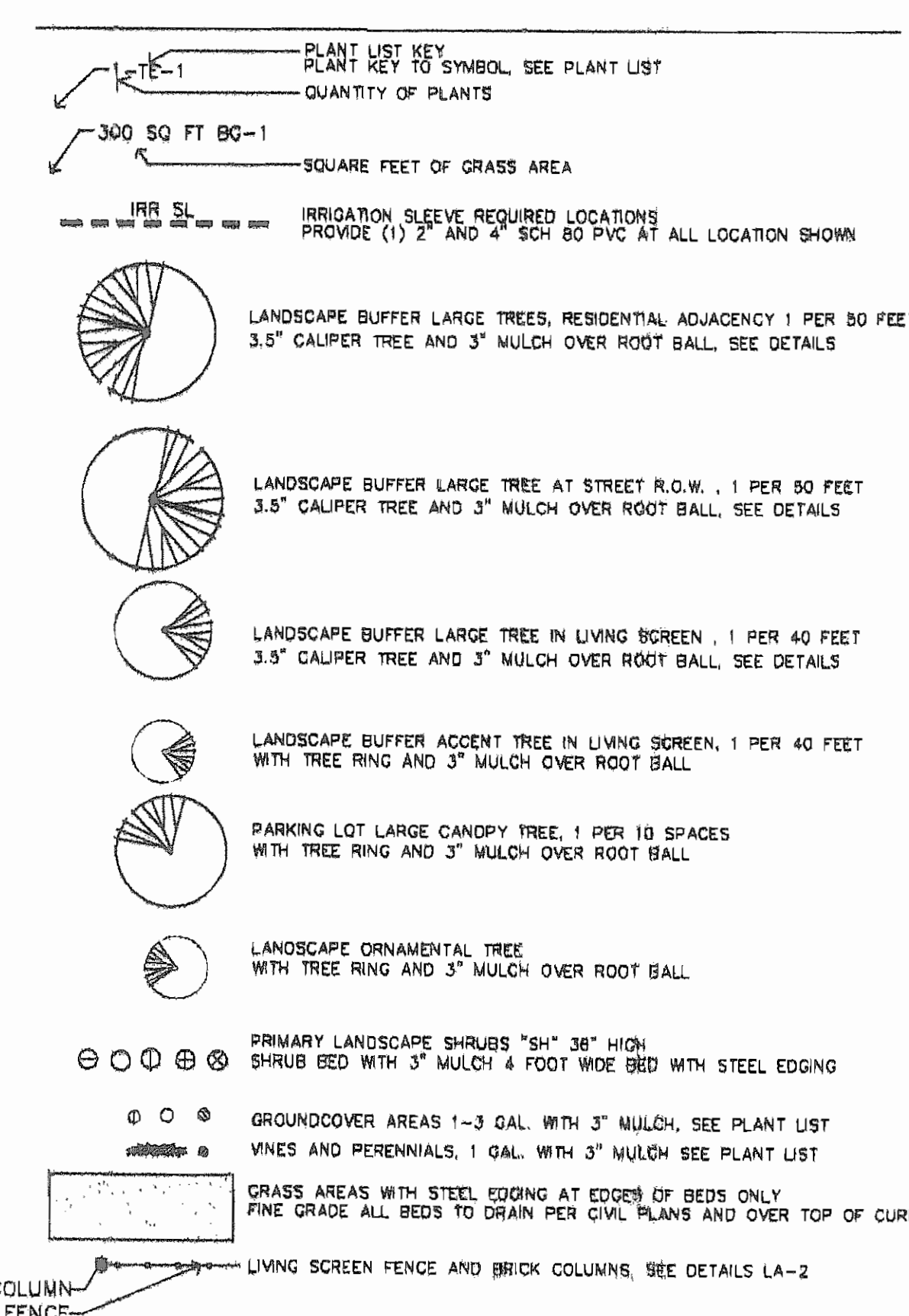
SOIL AMENDMENT NOTES FOR SHRUBS AND GROUND COVER BEDS (GENERAL)

- PRIOR TO SOIL AMENDING, THE SUB-GRADES SHALL BE 6" BELOW FINISH GRADE TO ALLOW FOR THE FOLLOWING AMENDMENTS AND FERTILIZER. THE LAYER OF SOIL AMENDMENTS SHALL BE 4" DEEP WITH A LAYER OF MULCH 3" DEEP AS SPECIFIED, LEAVING A FINISH GRADE OF 2" BELOW THE ADJACENT PAVED AREA. EXCAVATION AND/OR FILL MAY BE REQUIRED TO ACHIEVE THESE GRADES.
- APPLICATION RATES FOR SOIL AMENDMENTS:
 - ORGANIC SOIL CONDITIONER - 2" LAYER
 - TOPSOIL - 2" LAYER
 - FERTILIZER - OZMOCOTE PLUS 15-0-12, 10 LBS./1,000 SQ. FT. OF BED AREA
- AMENDMENTS SHALL BE UNIFORMLY SPREAD AND THOROUGHLY CULTIVATED INTO THE TOP 2" OF SUB-GRADE WHICH WILL MAKE A BED OF APPROXIMATELY 6 INCHES TOTAL DEPTH OF AMENDED SOIL.
- SOIL AMENDMENT TO PREPARED BACK FILL FOR TREES AND LARGE SHRUBS (3) ON GRASS AND LARGER:
 - BACK FILL MIX: PRIOR TO BACK FILL PROVIDE TREE DRAIN AND GRAVEL.
 - TOPSOIL - 3 PARTS
 - COMPOST - 1 PART
 - SHARP SAND - 1 PART
- SOIL AMENDMENT TO SOIL PREPARATION FOR LAWN AND GRASS AREAS:
 - PRE-PLANT WEED CONTROL: ROUND-UP TO BE APPLIED UNIFORMLY TO TREAT FOR WEEDS. FLOW ALL MANUFACTURER'S DIRECTIONS.
 - SOIL AMENDMENTS FOR LAWN AND GRASS AREAS:
 - FOR HYDRO-SEEDING PREPARATION AND SOLID SOO OPERATIONS.
 - PRIOR TO SOIL AMENDING, THE SUB-GRADES SHALL BE 2" BELOW FINISH GRADE TO ALLOW FOR THE FOLLOWING AMENDMENTS AND FERTILIZER. THE LAYER OF SOIL AMENDMENTS SHALL BE 1" DEEP LEAVING A FINISH GRADE 1" BELOW THE ADJACENT PAVED AREA. EXCAVATION AND/OR FILL MAY BE REQUIRED TO ACHIEVE THESE GRADES.
- APPLICATION RATES FOR SOIL AMENDMENTS:
 - TOP SOIL 1/2" LAYER ON BASE OF CUT SOO
 - FERTILIZER - OZMOCOTE PLUS 15-0-12, 10 LBS./1,000 SQ. FT. OF BED AREA
- AMENDMENTS SHALL BE UNIFORMLY SPREAD AND THOROUGHLY CULTIVATED TO 3" AND BELOW MAIN LINE SYSTEM, BY MEANS OF A MECHANICAL ROTOTILLER INTO THE TOP 3" OF SUB-GRADE, WHICH WILL MAKE A BED OF APPROXIMATELY 4" DEPTH OF AMENDED SOIL.

IRRIGATION CRITERIA

- ALL LANDSCAPING SHALL BE IRRIGATED WITH THE USE OF DRIP OR EMITTER IRRIGATION SYSTEM ON ALL GROUND COVER AND SHRUB AREAS AND OR TECH LINE NETAFIM BURIED BELOW THE 3" OF MULCH.
- ALL TREES TO HAVE BUBBLERS (2) ADJUSTABLE PER TREE. SEPARATE FROM GRASS OR SHRUB ZONES OR ON VALVES.
- ALL TURF AREAS SHALL BE IRRIGATED WITH TECH LINE NETAFIM.
- ALL BEDS AND GRASS AREAS TO BE DESIGNED ON SEPARATE IRRIGATION VALVES.
- THE CONTROLLER SHALL BE A WEATHER BASED ET CONTROLLER WITH RAIN, WIND AND FREEZE SENSORS. PER ARTICLE 8754 TEXAS REVISED CIVIL STATUTES AND THE TEXAS BOARD OF IRRIGATORS. HYDROPOINT-WEATHER TRAK, OR WEATHER-MATIC ET SERIES SMART LINE BASE BID.
- ALL REMOTE CONTROL VALVES TO INCORPORATE BASKET FILTERS TO SCREEN PARTICLES.
- INCLUDE PRESSURE REGULATOR TO DELIVER CORRECT PRESSURE TO ALL EMITTERS, TECH LINE AND BUBBLERS.
- ALL LATERAL LINES WITHIN IRRIGATION SYSTEM ARE TO BE SCH 200 PVC BURIED BELOW GRADE, MIN 12" FOR LATERALS.
- CONTROLLER WIRE SHALL BE 14 AWG-UP DIRECT BURIAL AND MADE OF SOLID COPPER. BURIED BELOW MAIN LINE, BUNDLES WIRES, AND SLOPE TO DRAIN OVER CURBS.
- MAINLINE SHALL BE PVC SHC 40 FOR 1" TO 1.5" AND PVC CLASS 315 FOR 2" TO 3". MAIN LINE SHALL BE BURIED 24 INCHES DEEP.
- SUBMAIN IS TO BE 2 TIMES THE PIPE DIAMETER PASSING THROUGH IT MADE OF SCH 40 PVC.
- RAINFALL DETECTION USING HYDROSCOPIC DISKS.
- INSTALL RAIN SENSOR AS SHOWN ON THE DRAWING. INSTALL WIRE IN .75" GALV CONDUIT TO TOP OF EDGE OF BUILDING AND PAINT TO MATCH BRICK. SEE DRAWING WEC-1.1(G). BANK AMERICA DESIGN GUIDELINES.
- INSTALL MASTER VALVE AT POINT OF CONNECTIONS AND FLOW SENSOR TO SHUT DOWN HIGH FLOW EVENTS.

LANDSCAPE LEGEND



TEXAS EXCAVATION SAFETY SERVICES
1-800-344-8377

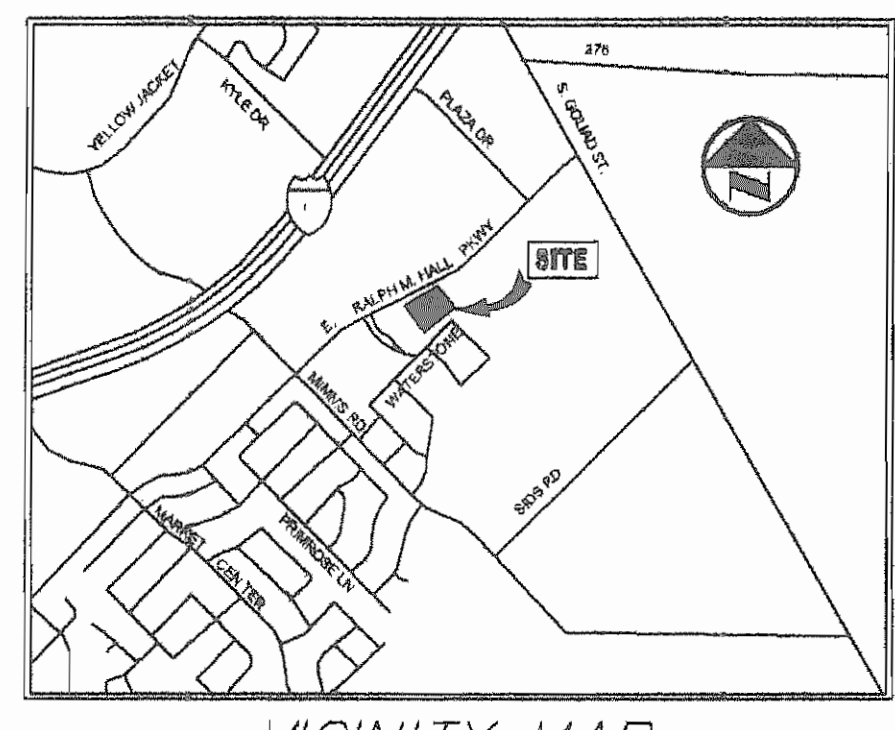


CITY OF ROCKWALL MAINTENANCE NOTE:

THE OWNER SHALL BE RESPONSIBLE FOR THE CONTINUED MAINTENANCE IN PERPETUITY OF ALL LANDSCAPING AND IRRIGATION. ALL REQUIRED LANDSCAPING SHALL BE MAINTAINED IN A NEAT AND ORDERLY MANNER AT ALL TIMES. THIS SHALL INCLUDE MOWING, EDGING, PRUNING, FERTILIZING, WATERING, WEEDING, KEEPING BEDS MULCHED IN ACCORDANCE WITH STANDARD HORTICULTURAL PRACTICES OR AS RECOMMENDED BY THE LANDSCAPE ADMINISTER AND OTHER ACTIVITIES COMMON TO THE MAINTENANCE OF LANDSCAPING. LANDSCAPED AREAS SHALL BE KEPT FREE OF TRASH, LITTER, WEEDS AND OTHER SUCH MATERIAL OR PLANTS NOT PART OF THE LANDSCAPING. ALL PLANT MATERIALS SHALL BE MAINTAINED IN A HEALTHY AND GROWING CONDITION AS IS APPROPRIATE FOR THE SEASON OF THE YEAR. ALL IRRIGATION HEADS OR LINES WHICH ARE BROKEN AND FLOW WATER SHALL BE REPLACED/REPAIRED IMMEDIATELY TO PREVENT WASTE OF WATER.

CITY OF THE ROCKWALL, TEXAS SELECTED PLANT LIST, LOW WATER USE

COMMON NAME	BOTANICAL NAME	SIZE
LIVE OAK HERITAGE	QUERCUS VIGNIANA, HERITAGE	100 GAL. 3.0-3.5" CAL. 16-18 FT. HIGH, CLEAR TRUNK TO 8 FEET
CEDAR ELM	ULMUS CRASSIFOLIA	100 GAL. 3.0-3.5" CAL. 16-18 FT. HIGH, CLEAR TRUNK TO 8 FEET
CHINESE PISTACHIO	PISTACHIA CHINENSIS	100 GAL. 3.0-3.5" CAL. 16-18 FT. HIGH, CLEAR TRUNK TO 8 FEET
RED CEDAR	JUNIPERUS TEXANA	65 GAL. 3.0-3.5" CAL. 8-10 FT. HIGH, LOW BRANCHING, SCREENING
ACCENT TREES		
CREPE MYRTLE, DYWAMITE	LAGERSTRONIA INDICA, DYWAMITE RED	30 GAL. 2.0-2.5" CAL. 6-8 FT. HIGH, MULTI TRUNK
DWARF YAUPOON HOLLY	ILEX VOMITORIA	30 GAL. 2.0-2.5" CAL. 6-8 FT. HIGH, MULTI TRUNK
DWARF BURFORD HOLLY	ILEX BURFORDI, NANA	5 GAL. 24" HIGH, FULL, 36" O.C. PLANT HIGH
DWARF BURFORD HOLLY		
DAYLILIES, RED ORANGE	HEMEROCLIDUS HYBRID EVERGREEN	1 GAL., 18" O.C. MAX.
ASIAN JASMINE	TRACHELOSPERMUM ASIATICUM	4" POTS @ 12" O.C. MAX.
BERNUDA GRASS	BERNUDA SPECIES, COMMON	SOLID SOO



VICINITY MAP N.T.S.

FILE COPY

RECEIVED
MAY 08 2012

SP2012 008



THE SEAL APPEARING ON THIS DOCUMENT WAS AUTHORIZED BY T.H. PRITCHETT, R.L.A. NO. 2115 ON 05/08/2012

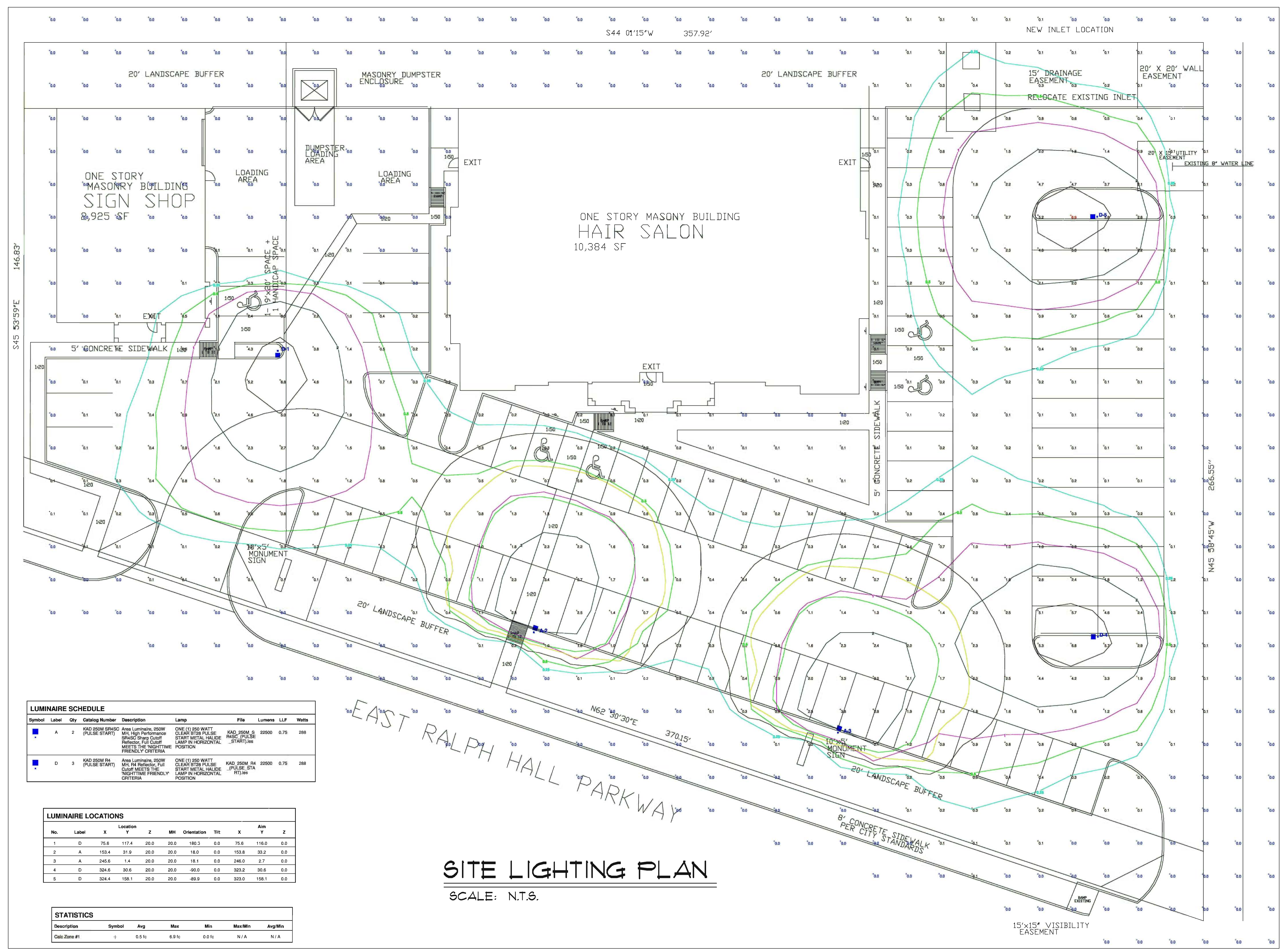
LOT 1, BLOCK 1 LANDSCAPE STANDARDS

SITE DESIGN CRITERIA	REQUIRED	PROVIDED
TOTAL GROSS AREA OF THE SITE		61,060 SQ. FT.
A. LANDSCAPE BUFFER ADJACENT TO RESIDENTIAL, REQUIRED 10 FT. WIDE BUFFER WITH 1 TREE PER 50 FEET. ADJACENT PROPERTY LINE 27'-5" TREES MAY BE CLUSTERED	6 TREES	6 TREES
B. SCREENING OFF SITE LOADING DOCKS	NONE	NONE
C. ACCEPTABLE LANDSCAPE PLANT MATERIAL MINIMUM 3.5" CALIPER OR GREATER ON ALL REQUIRED TREES	YES	YES
D. PROTECTION OF ALL LANDSCAPE AREAS BY CONCRETE CURBS OR CURB STOPS	YES	YES
E. IRRIGATION REQUIREMENT, ALL REQUIRED NEW LANDSCAPE AREAS TO BE IRRIGATED WITH UNDER GROUND IRRIGATION SYSTEM	YES	YES
F. SCREENING FROM RESIDENTIAL USES. REQUIRED MASONRY WALL 6 FEET HIGH ALTERNATIVE IS PROVIDED WITH 6 FOOT IRON FENCE WITH BRICK COLUMNS - SEE DETAILS. 1 LARGE TREE PER 40 FEET AND 1 ACCENT TREE PER 40 FEET IN ADDITION TO REQUIRED BUFFER TREES IN THIS AREA.	YES	NO YES 7 TREE 7 TREES
G. RIGHT OF WAY STREET LANDSCAPE BUFFER, AREA BETWEEN R.O.W AND ROAD WAY SURFACES TO BE SEEDED.	YES	YES
H. STREET LANDSCAPE BUFFER REQUIRED IN 20 FOOT WIDE BUFFER AND 1 LARGE TREE PER 50 FEET RALPH HALL PARKWAY 27'-3"	9 TREES	9 TREES
I. PARKING LOT LANDSCAPING, MINIMUM 5% OF THE PARKING LOT SHALL BE LANDSCAPE AREA. ALL PARKING SPACES SHALL BE WITHIN 80 FEET OF A LARGE TREE, ADDED PARKING LOT TREES	YES	YES
J. SCREENING OF DUMPSTER AND WALLED BEHIND WALL WITH GATES, REQUIRED	YES	YES
K. REQUIRED LANDSCAPE AREA ON SITE. THE REQUIRED AREA FOR THE LOT IS 15% COMMERCIAL USES. SITE IS APPROX SITE AREA = 61,060 SQ. FT.	9,188 SQ FT	13,936 SQ FT. 23%
L. PARKING LOTS SHALL PROVIDE 1 TREE PER 10 PARKING SPACES, 50 PARKING SPACES. TREES ALLOCATED PER AREA.	9 TREES	9 TREES

LOT 2, BLOCK 1 LANDSCAPE STANDARDS

SITE DESIGN CRITERIA	REQUIRED	PROVIDED
TOTAL GROSS AREA OF THE SITE		12,942 SQ. FT.
A. LANDSCAPE BUFFER ADJACENT TO RESIDENTIAL, REQUIRED 10 FT. WIDE BUFFER WITH 1 TREE PER 50 FEET. ADJACENT PROPERTY LINE 7'-0" TREES MAY BE CLUSTERED	2 TREES	2 TREES
B. SCREENING OFF SITE LOADING DOCKS	NONE	NONE
C. ACCEPTABLE LANDSCAPE PLANT MATERIAL MINIMUM 3.5" CALIPER OR GREATER ON ALL REQUIRED TREES	YES	YES
D. PROTECTION OF ALL LANDSCAPE AREAS BY CONCRETE CURBS OR CURB STOPS	YES	YES
E. IRRIGATION REQUIREMENT, ALL REQUIRED NEW LANDSCAPE AREAS TO BE IRRIGATED WITH UNDER GROUND IRRIGATION SYSTEM	YES	YES
F. SCREENING FROM RESIDENTIAL USES. REQUIRED MASONRY WALL 6 FEET HIGH ALTERNATIVE IS PROVIDED WITH 6 FOOT IRON FENCE WITH BRICK COLUMNS - SEE DETAILS. 1 LARGE TREE PER 40 FEET AND 1 ACCENT TREE PER 40 FEET IN ADDITION TO REQUIRED BUFFER TREES IN THIS AREA.	YES	NO YES 2 TREE 2 TREES
G. RIGHT OF WAY STREET LANDSCAPE BUFFER, AREA BETWEEN R.O.W AND ROAD WAY SURFACES TO BE SEEDED.	YES	YES
H. STREET LANDSCAPE BUFFER REQUIRED IN 20 FOOT WIDE BUFFER AND 1 LARGE TREE PER 50 FEET RALPH HALL PARKWAY 60'-4"	3 TREES	3 TREES
I. PARKING LOT LANDSCAPING, MINIMUM 5% OF THE PARKING LOT SHALL BE LANDSCAPE AREA. ALL PARKING SPACES SHALL BE WITHIN 80 FEET OF A LARGE TREE, ADDED PARKING LOT TREES	YES	YES
J. SCREENING OF DUMPSTER AND WALLED BEHIND WALL WITH GATES, REQUIRED	YES	YES
K. REQUIRED LANDSCAPE AREA ON SITE. THE REQUIRED AREA FOR THE LOT IS 15% COMMERCIAL USES. SITE IS APPROX SITE AREA = 12,942 SQ. FT.	1,941 SQ FT	3,980 SQ FT. 31%
L. PARKING LOTS SHALL PROVIDE 1 TREE PER 10 PARKING SPACES, 5 PARKING SPACES. TREES ALLOCATED PER AREA.	1 TREES	1 TREES

ROCKWALL COMMERCIAL



LUMINAIRE SCHEDULE

Symbol	Label	Qty	Catalog Number	Description	Lamp	File	Lumens	LLF	Watts
■	A	2	KAD 250M SR4SC (PULSE START)	Area Luminaire, 250W MH, High Performance SR4SC Sharp Cutoff Reflector, Full Cutoff MEETS THE NIGHTTIME FRIENDLY CRITERIA	ONE (1) 250 WATT CLEAR B109 PULSE START METAL HALIDE R4SC (PULSE START)IES	KAD_250M_S	22500	0.75	288
■	D	3	KAD 250M R4 (PULSE START)	Area Luminaire, 250W MH, R4 Reflector, Full Cutoff MEETS THE NIGHTTIME FRIENDLY CRITERIA	ONE (1) 250 WATT CLEAR B109 PULSE START METAL HALIDE LAMP IN HORIZONTAL POSITION	KAD_250M_R4	22500	0.75	288

LUMINAIRE LOCATIONS

No.	Label	X	Y	Z	MH	Orientation	Tilt	X	Y	Z
1	D	75.6	117.4	20.0	20.0	180.3	0.0	75.6	116.0	0.0
2	A	153.4	31.9	20.0	20.0	18.0	0.0	153.8	33.2	0.0
3	A	245.6	1.4	20.0	20.0	18.1	0.0	246.0	2.7	0.0
4	D	324.6	30.6	20.0	20.0	-90.0	0.0	323.2	30.6	0.0
5	D	324.4	158.1	20.0	20.0	-89.9	0.0	323.0	158.1	0.0

STATISTICS

Description	Symbol	Avg	Max	Min	Max/Min	Avg/Min
Calc Zone #1	+	0.5 fc	6.9 fc	0.0 fc	N/A	N/A

SITE LIGHTING PLAN
SCALE: N.T.S.



Catalog Number	
Notes	Type

Outdoor Decorative

Craftston Lantern

Compact Fluorescent



FEATURES & SPECIFICATIONS

INTENDED USE

Provides general illumination for outdoor wall use in residential and light commercial applications. Ideal for entryways creating an inviting exterior space as well as providing safety and security.

ATTRIBUTES

Arts and crafts styling, this transitionally styled lantern is offered in three sizes, each available in aged bronze patina finish with white speckled glass diffuser. It has a dusk-to-dawn photocell for added energy efficiency. The Craftston lanterns provide a wide spread even illumination for safety and security. Designed for outdoor use only. Should not be used in areas with limited ventilation or high ambient temperatures.

Includes (1) compact full spiral tube 4-pin 2700K fluorescent lamp for energy efficiency, superior color rendering and long life.

Standard with residential-grade electronic ballast (120 volt, 60Hz) ensures no flickering and quiet operation. Starts instantly down to 0°F (-18°C).

Use with non-dimmable switches only.

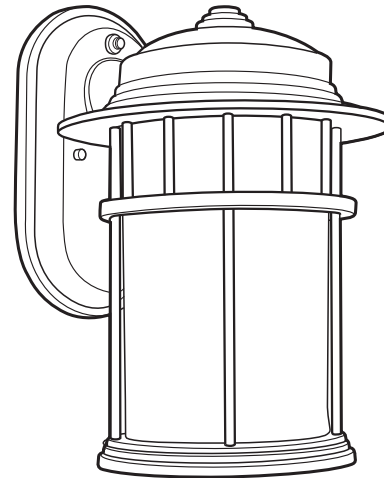
All mounting hardware included.

LISTING

CUL listed to US and Canadian safety standards and suitable for wet locations. ENERGY STAR® qualified.

WARRANTY

Guaranteed for two years against mechanical defects in manufacture. (excludes lamp)

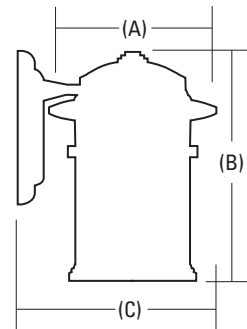


DIMENSIONS

Nominal Size	Lamp Configuration	Model Number	Number of Lamps	(A) Width inches (cm)	(B) Height inches (cm)	(C) Extension* inches (cm)
7"		ODSL10	(1) 13W compact full spiral	7" (17.8)	10-1/2" (26.7)	8-1/4" (21.0)
9"		ODML10	(1) 18W compact full spiral	9" (22.9)	13-1/4" (33.6)	10-1/4" (26.0)
11"		ODLL10	(1) 26W compact full spiral	11" (27.9)	15-3/4" (40.0)	12-1/4" (31.1)

* Maximum extension from wall

All dimensions are in inches (centimeters)



ORDERING INFORMATION

Example: **ODSL10 GBZ**

Choose the boldface catalog nomenclature that best suits your needs and write it on the appropriate line. Order accessories and replacement parts as separate catalog numbers.

Model Number		Ballast/Voltage	Finish	Options
ODSL10	(1) 13W compact full spiral 4-pin 2700K fluorescent lamp Included	(blank)	GBZ Aged bronze patina	(Consult factory)
ODML10	(1) 18W compact full spiral 4-pin 2700K fluorescent lamp Included	120 volt residential electronic ballast (standard)		
ODLL10	(1) 26W compact full spiral 4-pin 2700K fluorescent lamp Included			

Other voltage and ballast types (Consult factory)

PHOTOMETRICS

Full photometric data report available within 2 weeks from request. Consult factory.

FEATURES & SPECIFICATIONS

INTENDED USE

Ideal for a wide variety of low- to medium-height ceiling applications including commercial, retail and hospitality spaces where a wet location lensed fixture is required. Ideal for shower and outdoor applications.

CONSTRUCTION

Galvanized steel mounting frame with mechanical trim retention (yoke) ensures secure and flush reflector mounting to ceiling. Mounting frame has cutout section for remodel applications when installation from below is necessary.

Galvanized bar hangers span up to 24" o.c. and feature built-in T-bar clips and nailers for T-bar or wood joist installation.

Frames equipped with galvanized junction box UL Listed for through wire applications.

Maximum 1-1/2" ceiling thickness.

OPTICS

Aluminum clear specular full reflectors are optically designed to maximize lumen output and to provide superior glare control.

Glass lenses are available in clear flat, tempered prismatic, drop opal or fresnel glass lens to provide optimal visual comfort and improved aesthetics.

ELECTRICAL

Electronic ballast with end of lamp life protection standard. Class P thermally protected ballast protects against improper contact with insulation. Minimum starting temperature is 0°F/-18°C.

Rated for #12 AWG conductor thru-branch wiring. Minimum 90° supply wire. Ground wire provided.

Lamp Socket Base:

DTT 4-pin lamps – 18W (G24Q-2); 26W (G24Q-3)

TRT 4-pin lamps – 18W (GX24Q-2); 26W & 32W (GX24Q-3); 42W (GX24Q-4)

LISTINGS

Fixtures are UL Listed for thru-branch wiring, Non-IC recessed mounting, wet location, and to U.S. and Canadian Safety Standards.

Catalog Number
Notes
Type

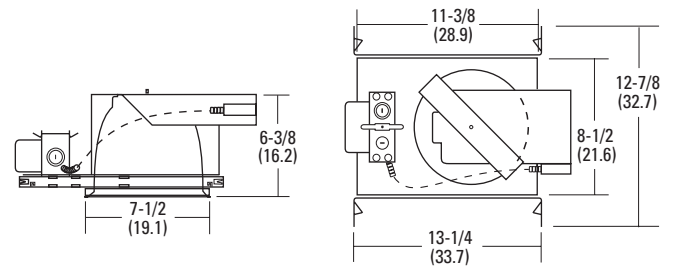
Compact Fluorescent Downlighting

6" 6HF



WET LENS

Horizontal 1-Lamp, Triple Tube (TRT)



Specifications

- Max. height: 6-3/8 (16.2)
- Ceiling opening: 7 (17.8)
- Overlap trim: 7-1/2 (19.1)
- Length: 13-1/4 (33.7)
- Width: 12-7/8 (32.7)
- All dimensions are inches (centimeters).

ORDERING INFORMATION

For shortest lead times, configure products using **bolded options**.

Example: 6HF 1/26-42TRT F6LS1 MVOLT

6HF Series	Wattage/Lamp	Reflector/Color ²	Voltage	Options ⁵
6HF	1/18DTT	F6LS1 White splay, white lens	MVOLT³	ADEZ Advance Mark 10™ electronic dimming ballast, 120V or 277V. Minimum dimming level 5%. Must be voltage specific.
	1/26DTT	F6LSB1 Black baffle, white lens	120	ECOS Lutron EcoSystem electronic dimming ballast, 120V-277V. Must be wattage specific. Minimum dimming level 5%.
	1/18TRT	F6LS4 White splay, fresnel lens	277	EL Emergency PSDL3 DL battery pack with integral test switch⁶
	1/26-42TRT¹	F6LSB4 Black baffle, fresnel lens	347 ⁴	ELR Emergency PSDL3 DL battery pack with remote test switch⁶
	1/26TRT	F6LS73 White splay, tempered prismatic lens		ELHL IOTA I-420-R high lumen output emergency battery pack. Integral test switch provided. Maximum average lumen output 1300 (42W). ⁷
	1/32TRT	F6LSB73 Black baffle, tempered prismatic lens		ELRHL IOTA I-420-EM-B high lumen output emergency battery pack. Remote test switch provided. Maximum average lumen output 1300 (42W). ⁷
	1/42TRT	F6LSD3 White splay, drop opal lens		GMF Single slow-blow fuse, must specify voltage
		F6LSDB3 Black baffle, drop opal lens		BDP Ballast disconnect plug (meets codes that require in-fixture disconnect) ⁴
				RIF1 Radio interference filter
				WLP 35K lamp (shipped separately)

Accessories: Order as separate catalog number.	
SCA6	Sloped ceiling adaptor. Degree of slope must be specified (10D, 15D, 20D, 25D, 30D) Ex: SCA6 10D.
CTE6	Ceiling thickness extender is used when ceiling thickness is greater than 1-1/2" (3.8). Maximum thickness 2" (5.1).

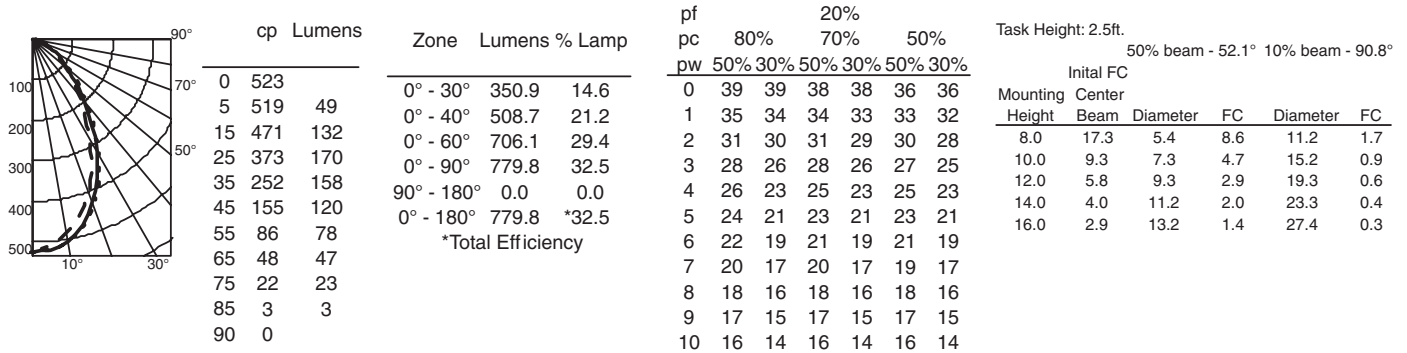
Notes

- Not available with ADEZ or ECOS.
- White painted flange standard.
- Electronic multi-volt ballast capable of operating any line voltage from 120-277V, 50 or 60Hz.
- Not available with EL or ELR.
- For **additional options**, see www.lithonia.com.
- Add 3" (7.6) to width and 4-1/2" (11.4) to length.
- Not recommended for field installation.

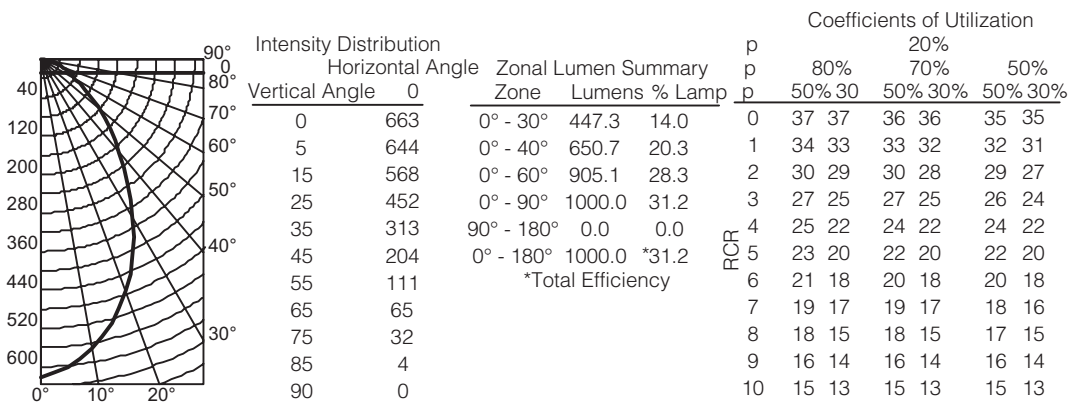
6" 6HF Horizontal 1-Lamp, Triple Tube (TRT), Wet Lens

Distribution Curve	Distribution Data	Output Data	Coefficient of Utilization	Illuminance Data at 30" Above Floor for a Single Luminaire
--------------------	-------------------	-------------	----------------------------	------------------------------------------------------------

6HF 1/32TRT F6LS73 MVOLT, (1) 32W TRT lamp, 1.2 s/mh, 3600 rated lumens, test no. LTL12562



6HF 1/42TRT F6LS73 MVOLT, (1) 42W TRT lamp, .98 s/mh, 3200 rated lumens, test no. LTL12563



6HF-WETLENS-1-TRT

FEATURES & SPECIFICATIONS

INTENDED USE – Ideal for parking areas, street lighting, walkways and car lots.

CONSTRUCTION – Rugged, die-cast, soft corner aluminum housing with 0.12" nominal wall thickness. Die-cast door frame has impact-resistant, tempered, glass lens that is fully gasketed with one-piece tubular silicone.

Finish: Standard finish is dark bronze (DDB) polyester powder finish, with other architectural colors available.

OPTICS – Anodized, aluminum reflectors: IES full cutoff distributions R2 (asymmetric), R3 (asymmetric), R4 (forward throw) and R5S (square) are interchangeable. High-performance anodized, segmented aluminum reflectors IES full cutoff distributions SR2 (asymmetric), SR3 (asymmetric) and SR4SC (forward throw, sharp cutoff). High-performance reflectors attach with tool-less fasteners and are rotatable and interchangeable.

ELECTRICAL – Ballast: High pressure sodium: 70-150W is high reactance, high power factor. Constant wattage autotransformer for 200-400W. Metal halide: 70-150W is high reactance, high power factor and is standard with pulse-start ignitor technology. "SCWA" not required. Constant wattage autotransformer for 175-400W. Super CWA (pulse start ballast), 88% efficient and EISA legislation compliant, is required for metal halide 151-400W (SCWA option) for US shipments only. CSA, NOM or INTL required for probe start shipments outside of the US. Pulse-start ballast (SCWA) required for 200W, 320W, or 350W. Ballast is 100% factory-tested.

Socket: Porcelain, horizontally oriented medium base socket for 70-150M. Mogul base socket for 175M and above, and 70-400S, with copper alloy, nickel-plated screw shell and center contact. UL listed 1500W, 600V.

LISTINGS – UL Listed (standard). CSA Certified (see Options). UL listed for 25°C ambient and wet locations. IP65 rated in accordance with standard IEC 529.

Specifications subject to change without notice.

Catalog Number
Notes
Type



Soft Square Lighting

KAD



Specifications

EPA: 1.2 ft.²

*Weight: 35.9 lbs (16.28 kg)

Length: 17-1/2" (44.5)

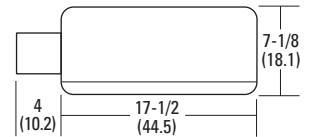
Width: 17-1/2" (44.5)

Depth: 7-1/8" (18.1)

All dimensions are inches (centimeters) unless otherwise specified.

*Weight as configured in example below.

METAL HALIDE: 70-400W
HIGH PRESSURE SODIUM: 70-400W
20" TO 35" MOUNTING



ORDERING INFORMATION For shortest lead times, configure product using **bolded options**.

Example: KAD 400M R3 TB SCWA SPD04 LP1

KAD	Wattage			Distribution		Voltage	Ballast	Mounting ¹²	
KAD	Metal halide	High pressure sodium¹	Ceramic metal halide	Standard reflectors	High performance reflectors⁸	120 208 ⁹ 240 ⁹ 277 347 480⁹ TB¹⁰ 23050HZ ¹¹	(blank) Magnetic ballast CWI Contant wattage isolated ¹¹ SCWA Super CWA pulse-start ballast NOTE: For shipments to U.S. territories, SCWA must be specified to comply with EISA.	Ships in fixture carton SPD ___ Square pole RPD ___ Round pole WBD ___ Wall bracket WWD ___ Wood or pole wall Ships separately^{13,14} DAD12P Degree arm (pole) DAD12WB Degree arm (wall) WBA Decorative wall bracket ¹⁵ KMA Mast arm external fitter KTMB Twin mounting bar	Arm length 04 4" arm 06 6" arm 09 9" arm 12 12" arm

Options			Finish ¹⁰	Lamp ²¹
Shipped installed in fixture	QRSTD QRS time delay ¹⁸	Shipped separately¹³	(blank) Dark bronze	LPI Lamp included
SF Single fuse (120, 277, 347V) ¹⁶	WTB Terminal wiring block ¹⁷	HS House side shield	DWH White	L/LP Less lamp
DF Double fuse (208, 240, 480V) ¹⁶	CSA CSA Certified	PE1 NEMA twist-lock PE (120, 208, 240V)	DBL Black	 <small>Consistent with LEED® goals & Green Globes™ criteria for light pollution reduction</small>
PD Power tray ¹⁷	INTL Available MH for probe start shipping outside the U.S.	PE3 NEMA twist-lock PE (347V)	DMB Medium bronze	
PER NEMA twist-lock receptacle only (no photocontrol)	REGC1 California Title 20, effective 1/1/2010	PE4 NEMA twist-lock PE (480V)	DNA Natural aluminum	
QRS Quartz restrrike system ¹⁸		PE7 NEMA twist-lock PE (277V)		
		SC Shorting cap for PER option		
		VG Vandal guard ¹⁹		
		WG Wire guard ¹⁹		

Notes

- 1 Not available with SCWA.
- 2 Not available with 480V.
- 3 These wattages do not comply with California Title 20 regulations.
- 4 Must be ordered with SCWA.
- 5 These wattages require the REGC1 option to be chosen for shipments into California for Title 20 compliance. 250M REGC1 is not available in 347 or 480V.
- 6 Reduced jacket ED28 required for SR2, SR3 and SR4SC optics.
- 7 House-side shield available.
- 8 High performance reflectors not available with QRSTD.
- 9 Must specify CWI for use in Canada.
- 10 Optional multi-tap ballast (120, 208, 240, 277V; in Canada: 120, 277, 347V).
- 11 Consult factory for available wattages.
- 12 9" arm is required when two or more luminaires are oriented on a 90° drilling pattern.
- 13 May be ordered as an accessory.
- 14 Must specify finish when ordered as an accessory.
- 15 Available with SPD04 and SPD09.
- 16 Must specify voltage. N/A with TB.
- 17 Only available with SR2, SR3 and SR4SC optics.
- 18 Max allowable wattage lamp included.
- 19 Prefix with KAD when ordered as an accessory.
- 20 See www.lithonia.com/archcolors for additional color options.
- 21 Must be specified. L/LP not available with MHC.
- 22 Must use RPD09.

Accessories: Tenon Mounting Slipfitter (RPxx required.)
Order as separate catalog number. Must be used with pole mounting.

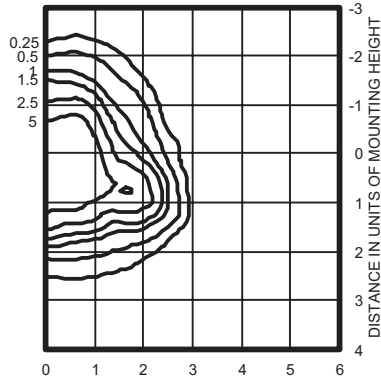
Number of fixtures						
Tenon O.D.	One	Two@180°	Two@90°	Three@120°	Three@90°	Four@90°
2-3/8"	T20-190	T20-280	T20-290 ²²	T20-320 ²²	T20-390 ²²	T20-490 ²²
2-7/8"	T25-190	T25-280	T25-290 ²²	T25-320	T25-390 ²²	T25-490 ²²
4"	T35-190	T35-280	T35-290 ²²	T35-320	T35-390 ²²	T35-490 ²²

KAD Metal Halide, Arm-mounted Soft Square Cutoff

Coefficient of Utilization _____
 Initial Footcandles _____

KAD 400M R2 Test no. 1193083101P

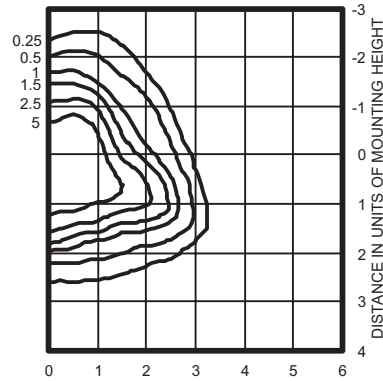
ISOILLUMINANCE PLOT (Footcandle)



400W pulse start metal halide lamp, rated 38000 lumens. Footcandle values based on 20' mounting height.
 Classification: Type II, Short, Full Cutoff

KAD 400M R3 Test no. 1192040902P

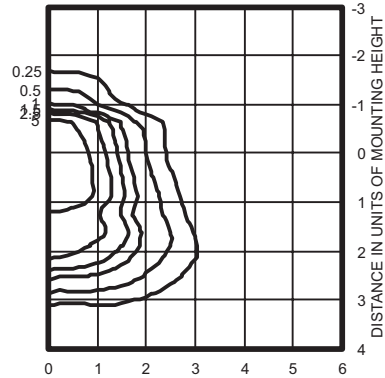
ISOILLUMINANCE PLOT (Footcandle)



400W pulse start metal halide lamp, rated 38,000 lumens. Footcandle values based on 20' mounting height.
 Classification: Type II, Short, Full Cutoff

KAD 400M R4 Test no. 1191110101P

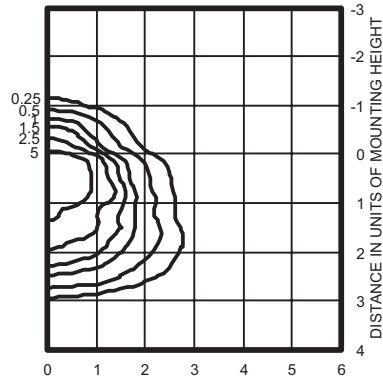
ISOILLUMINANCE PLOT (Footcandle)



400W pulse start metal halide lamp, rated 38,000 lumens. Footcandle values based on 20' mounting height.
 Classification: Unclassified (Type III, Very Short), Full Cutoff

KAD 400M R4HS Test no. 1192061101P

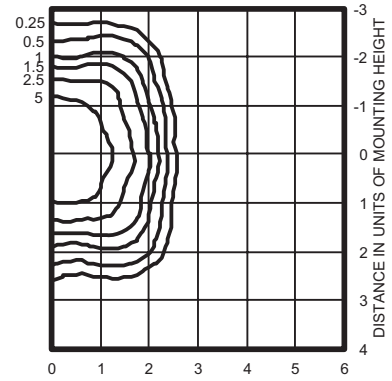
ISOILLUMINANCE PLOT (Footcandle)



400W pulse start metal halide lamp, rated 38,000 lumens. Footcandle values based on 20' mounting height.
 Classification: Unclassified (Type III, Very Short), Full

KAD 400M R5S Test no. 1194040801P

ISOILLUMINANCE PLOT (Footcandle)



400W pulse start metal halide lamp, rated 38000 lumens. Footcandle values based on 20' mounting height.
 Classification: Unclassified (Type NC, Very Short), Full Cutoff

Notes

- 1 Photometric data for other distributions can be accessed at www.lithonia.com.
- 2 Tested to current IES and NEMA standards under stabilized laboratory conditions. Various operating factors can cause differences between laboratory data and actual field measurements. Dimensions and specifications on this sheet are based on the most current available data and are subject to change without notice.
- 3 For electrical characteristics, consult outdoor technical data specification sheets on www.lithonia.com.

Mounting Height Correction Factor

(Multiply the fc level by the correction factor)

- 25 ft. = 0.64
- 35 ft. = 0.32
- 40 ft. = 0.25

$$\left(\frac{\text{Existing Mounting Height}}{\text{New Mounting Height}} \right)^2 = \text{Correction Factor}$$

Catalog Number	
Notes	Type

FEATURES & SPECIFICATIONS

INTENDED USE

Recessed housing rated IC. For remodel construction only.
Approved for factory assembled wiring only.
Approved for direct burial in insulation.

CONSTRUCTION

Air-tight construction standard. Tested to meet current energy codes.
Aluminum housing with three remodel clips for installation in existing plaster, sheet rock or mechanical ceilings.
Heavy-gauge galvanized steel raceway arm.
Galvanized steel junction box with four built-in romex clamps, five 1/2" knockouts with slots for pryout. Not suitable for pulling wires.
Maximum 4 (2 in, 2 out) No. 12 AWG conductors. Rated for 90° C.
Ground wire provided.
Removable J-box door for easy access.
Trim retention (clips): Retaining clips riveted to top of reflector hold trim inside housing.
Trim retention (TOR): Two-side mounted torsion springs on the trim and 2 receiving brackets in the can ensure a consistently tight fit with the ceiling.

ELECTRICAL

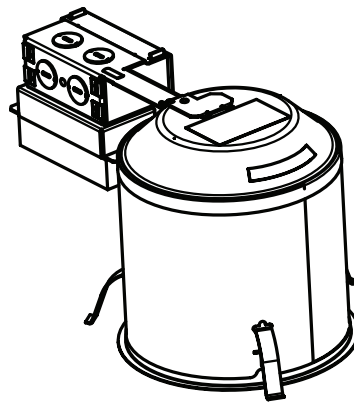
Electronic 120 volt ballast with end of life protection standard with TRT lamps. Requires 4-pin lamp.
Class P thermally protected ballast protects against improper contact with insulation.
Socket assembly clips to top of housing to prevent paint overspray.
Socket attaches to reflector to ensure proper and consistent lamp position.

INSTALLATION

Air-tight housing suitable for air-tight installations. Refer to energy codes for proper installations.
2 x 8 existing ceiling or T-bar ceiling panel installation.
Clip adjustment on housing (up to 1-1/4") allows for flush mounting with ceiling face.

LISTINGS

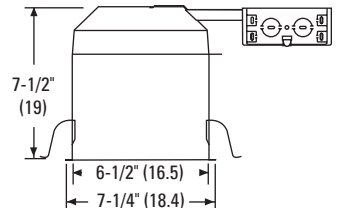
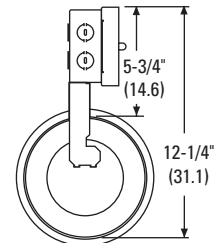
UL Listed to U.S. and Canadian Safety Standards. Damp location listing (see trim selection for wet location listing). **Energy Star® qualified.**
NOTE: Specifications subject to change without notice.



6" Housing

L7XFR

FLUORESCENT
IC
Remodel Construction



Specifications

Height: 7-1/2 (19.1)
Length: 12-1/4 (31.1)
Width: 7-1/4 (18.4)
Ceiling opening: 6-7/8 (17.5)
Ceiling cutout template: 6.65

All dimensions are inches (centimeters) unless otherwise specified.

ORDERING INFORMATION

For shortest lead times, configure product using **standard options (shown in bold)**.

Example: L7XFR26T 120 R6

Series	Voltage	Options	Packaging
L7XFR13T ¹ L7XFR13D ¹ L7XFR18T ² L7XFR18D ² L7XFR26T³	120	GMF Single slow-blow fuse GSKT Foam gasketing, aids in air-tight installation PHC Poke-home wire connectors ADEBD Ambistar electronic dimming ballast. Class B FCC EMI Rating. Available in 26 watt only. Optimal dimming range 15% - 100% light output WLP 35K 4-pin lamp (shipped separately)	R6 Resale pack of six U Unit (non-stock)

NOTES:

- Lamp socket base 13w 4-pin: DTT (G24Q-1); TRT (GX24Q-1).
- Lamp socket base 18w 4-pin: DTT (G24Q-2); TRT (GX24Q-2).
- Lamp socket base 26w 4-pin: TRT (GX24Q-3).

Accessories:

Order as separate catalog number.
ATK6 R6 6" Air-tight trim kit



7 Series 6" Incandescent L7XFR Full Reflector Trims

Description Catalog number	Maximum wattage Sheet number	Description Catalog number	Maximum wattage Sheet number	Description Catalog number	Maximum wattage Sheet number	Description Catalog number	Maximum wattage Sheet number
General/Task				Lens/Wet Location			
Open Wide Flange 601	White 13DTT 26TRT	Baffle Wide Flange 6B1 TOR Black 6B1W TOR White	13DTT 26TRT	Baffle Narrow Flange 7B0W White	13DTT 18TRT	Plastic Lens, Drop, Narrow Flange 6LD1 Drop opal plastic 6LD2 Drop prismatic plastic	
IC	ROPN-100	IC	RBAF-100	IC	RBAF-150		18DTT 26TRT
Open Wide Flange 601 TOR White 601BN TOR Brushed nickel 601ORB TOR Oil-rubbed bronze 601BZA TOR Antique bronze	13DTT 26TRT	Baffle Narrow Flange 6B2 Black 6B2W White	18DTT 26TRT	Baffle Narrow Flange 7B2 TOR Black 7B2W TOR White 7B2BN TOR Brushed nickel 7B2BZA TOR Antique bronze 7B2ORB TOR Oil-rubbed bronze	13DTT 26TRT	Glass Lens, Drop Opal, Narrow Flange 6LD3 White splay 6LDB3 Black baffle	18DTT 26TRT
IC	ROPN-110	IC	RBAF-110	IC	RBAF-170	IC	RLNS-100
Open Narrow Flange 602 White 602A Clear diffuse 602AZ Clear specular	13DTT 26TRT	Baffle Narrow Flange 6B3 Black 6B3W White	18DTT 26TRT	Baffle Wide Flange 7B3 TOR Black 7B3W TOR White	13DTT 26TRT	Glass Lens, Flush White, Narrow Flange 6LF3 White splay 6LFB3 Black baffle	13DTT 26TRT
IC	ROPN-110	IC	RBAF-120	IC	RBAF-180	IC	RLNS-110
Open Narrow Flange 602 TOR White 602BN TOR Brushed nickel 602ORB TOR Oil-rubbed bronze 602BZA TOR Antique bronze	13DTT 26TRT	Baffle Narrow Flange 6B4 Black 6B4W White	18DTT 26TRT	Baffle Narrow Flange 7B5 Black 7B5W White	13DTT 26TRT	Glass Lens, Flush Fresnel, Narrow Flange 6L4 White Splay 6LB4 Black Baffle	13DTT 26TRT
IC	ROPN-110	IC	RBAF-120	IC	RBAF-190	IC	RLNS-110
Open Narrow Flange 602 TOR White 602BN TOR Brushed nickel 602ORB TOR Oil-rubbed bronze 602BZA TOR Antique bronze	13DTT 26TRT	Open Wide Flange 701 TOR White	13DTT 13TRT				
IC	ROPN-170	IC	ROPN-170	Wallwash			
Premium Specular Cone w/Diffuse Upper Reflector 6C3AZ Clear specular 6C3BLZ Specular black	18DTT 18TRT	Open Narrow Flange 702A Clear diffuse 702AZ Clear specular 702BLZ Black specular	13DTT 26TRT	Eyelid Wallwash, Narrow Flange 6W1 White	18DTT 26TRT	Shower/Closet Lens Narrow Flange 7LD1 Drop opal metal flange 7LD1 PF Drop opal plastic 7LD2 PF Drop prismatic plastic	13TRT
Non-IC	ROPN-140	IC	ROPN-180	IC	RWLL-100	IC	RLNS-140
Open Narrow Flange 603AZ Clear specular	18DTT 26TRT	Open Narrow Flange 702 TOR White	13DTT 26TRT	Baffled Eyelid Wallwash, Narrow Flange 6W2W White	18DTT 26TRT		
IC	ROPN-130	IC	ROPN-180	IC/Non-IC	RWLL-110		

- NOTES:
- 1 Maximum wattage listed. Lower wattage lamps may be used.
 - 2 Lens trims are wet location listed. All others are damp location.
 - 3 Shallow trims may be used for lower lamp position.