

HITT FAMILY LIMITED PARTNERSHIP  
VOLUME 1875, PAGE 235  
D.R.R.C.T.

R = 957.50'  
L = 422.95'  
T = 214.98'  
D = 25°18'33"  
CH = S75°45'14" W  
419.52'

ROCKWALL ECONOMIC  
DEVELOPMENT CORPORATION  
VOLUME 3495, PAGE 314  
D.R.R.C.T.

ZONING LI

DISCOVERY BLVD.  
(85' PUBLIC R.O.W.)

BLOCK 'A', LOT I  
ROCKWALL TECHNOLOGY  
PARK PHASE II  
CABINET E, SLIDE 306  
P.R.R.C.T.

ROCKWALL ECONOMIC  
DEVELOPMENT CORPORATION  
VOL. 2224, PG. 226  
D.R.R.C.T.

LOT I, BLOCK 'B'  
ROCKWALL TECHNOLOGY  
PARK PHASE II  
CABINET E, SLIDE 306  
P.R.R.C.T.

ZONING LI

ROCKWALL ECONOMIC  
DEVELOPMENT CORPORATION  
VOL. 2224, PG. 226  
D.R.R.C.T.

ZONING LI

ROCKWALL ECONOMIC  
DEVELOPMENT CORPORATION  
VOLUME 5528, PAGE 194  
D.R.R.C.T.

DATA DRIVE  
(65' PUBLIC R.O.W.)

MATCH LINE (SEE SHEET S102)

**SITE DATA**

ZONING:	LI
PROPOSED USE:	BAKERY PRODUCTION AND SHIPPING; F-1 MODERATE HAZARD FACTORY INDUSTRIAL
INGREDIENTS STORAGE:	S-1 MODERATE HAZARD STORAGE
LOT AREA GROSS:	38.932 AC (1,695,870 S.F.)
GROSS BUILDING AREA:	276,548 S.F.
BUILDING COVERAGE:	16%
TOTAL IMPERVIOUS AREA:	667,462 S.F.
TOTAL OPEN SPACE:	1,028,408 S.F.
PERCENT OPEN SPACE:	61%
NUMBER OF STORIES:	1
BUILDING HEIGHT:	34'-6" (MAX)
CONSTRUCTION TYPE:	IB NON-COMBUSTIBLE, UNPROTECTED
BUILDING IS FULLY SPRINKLERED	
ON-SITE PARKING REQ'D:	OFFICE: 20,910 S.F. ● 1 SPACE/300 S.F. = 70 SPACES REST OF BUILDING: 255,638 S.F. ● 1 SPACE/1000 S.F. = 256 SPACES TOTAL PARKING SPACES REQUIRED = 326 SPACES
TOTAL ON-SITE PARKING PROVIDED:	175 SPACES
STAFFING STATISTICS:	SHIPPING: 50 EMPLOYEES ● 25 PER SHIFT SHIPPING PARKING: 50 SPACES, INCL. 2 H.C. SPACES BAKERY/OFFICE: 81 EMPLOYEES ● 27 PER SHIFT BAKERY/OFFICE PARKING: 125 SPACES, INCL. 6 H.C. SPACES

● BENCH MARKS ●

BM A  
AN "X" CUT IN THE BACK OF CURB LOCATED AT THE SOUTH RIGHT-OF-WAY LINE OF SPRINGER ROAD ±2470' EAST OF THE INTERSECTION OF SPRINGER ROAD AND F.M. 549.  
598.80 FT.

BM B  
AN "X" CUT IN THE CENTERLINE OF WALK AT THE SOUTHEAST CORNER OF THE INTERSECTION OF DATA DRIVE AND DISCOVERY BLVD.  
600.88 FT.

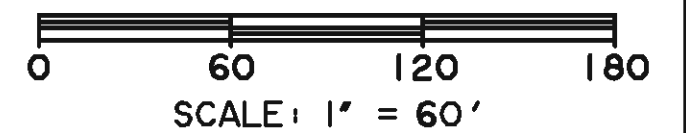
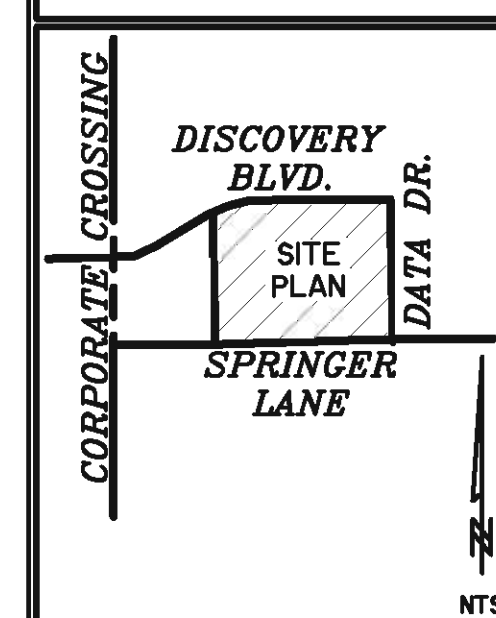
GENERAL NOTES:

- ALL COORDINATES ARE TO THE BACK OF CURB, UNLESS NOTED OTHERWISE.
- DIMENSIONS SHOWN ARE TO THE BACK OF CURB, UNLESS NOTED OTHERWISE.
- ALL PROPOSED CURB RADIUS ARE 2.5' B/C, WITHIN PARKING LOT, UNLESS NOTED OTHERWISE.
- SEE ARCHITECTURAL PLANS FOR BLDG. DIMENSIONS.
- ALL CONCRETE PAVEMENT SHALL HAVE 6" CURBS UNLESS OTHERWISE NOTED.
- ALL DISTURBED AREAS TO BE HYDROMULCHED SEEDED UNLESS OTHERWISE NOTED.
- ALL PROPOSED GATES ARE DOUBLE SWING PIPE GATES.

LEGEND

	PROPOSED LANDSCAPE SEEDING AREAS
	PROPOSED SIDEWALK
	5' - 3600 PSI CONC. (LIGHT DUTY)
	8' - 3600 PSI CONC. (HEAVY DUTY)
	PARKING STALL COUNT

KEY MAP



OWNER INFORMATION  
ALLEN FOODS, INC.  
RICHARD BERGER  
255 BUSINESS CENTER DRIVE  
HORSHAM, PA 19044  
PH. 314-513-3852  
FAX. 314-485-2472

PREPARED BY:  
**WIER & ASSOCIATES, INC.**  
ENGINEERS SURVEYORS LAND PLANNERS  
701 HIGHLANDER BLVD., SUITE 300 ARLINGTON, TEXAS 76015 METRO (817)467-7700  
6849 ELM STREET FRESNO, TEXAS 75044 METRO (214)397-8000  
Texas Firm Registration No. F-2776 www.wierassociates.com



**BIMBO BAKERIES USA**  
ROCKWALL, TEXAS

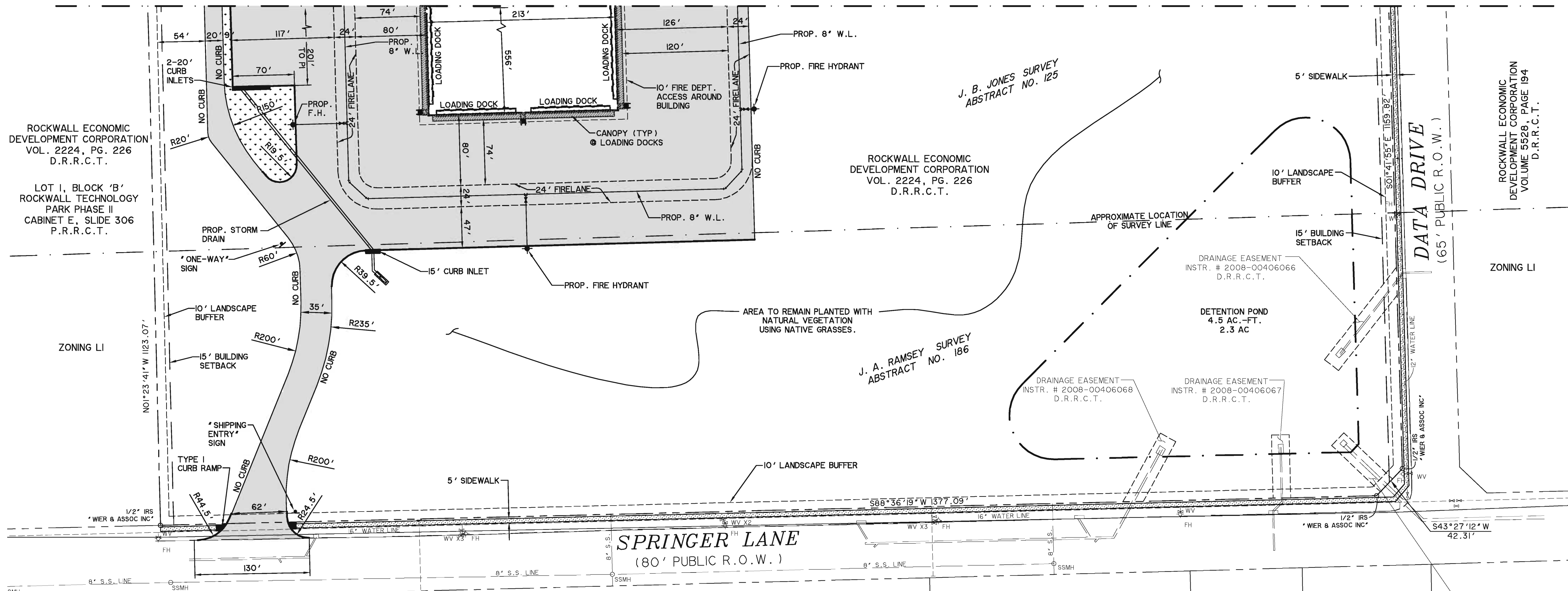
**SITE PLAN**

PRELIMINARY PLANS FOR PROJECT REVIEW. NOT FOR CONSTRUCTION, BIDDING OR PERMIT PURPOSES.  
Prepared By/Or Under Direct Supervision Of  
Ronald Ramirez, PE  
Texas Registration No. 81821 On Date Shown Below.

COPYRIGHT ©  
WIER & ASSOCIATES, INC.  
LAST SHEET EDIT  
DATE 02-23-2012  
WA# 12002

**SHEET NO. S101**

MATCH LINE (SEE SHEET S101)



ROCKWALL ECONOMIC DEVELOPMENT CORPORATION VOL. 2224, PG. 226 D.R.R.C.T.  
 LOT I, BLOCK 'B' ROCKWALL TECHNOLOGY PARK PHASE II CABINET E, SLIDE 306 P.R.R.C.T.

ROCKWALL ECONOMIC DEVELOPMENT CORPORATION VOL. 2224, PG. 226 D.R.R.C.T.

ROCKWALL ECONOMIC DEVELOPMENT CORPORATION VOLUME 5528, PAGE 194 D.R.R.C.T.

DGM INVESTMENT CORPORATION VOL. 114, PG. 637 D.R.R.C.T.

LATTIMORE MATERIALS COMPANY, L.P. VOL. 1986, PG. 20 D.R.R.C.T.

HIGHWAY 276 SELF STORAGE CAB. F. SLIDE 125 P.R.R.C.T.

BLACKLAND WATER SUPPLY VOL. 235, PG. 233 D.R.R.C.T.

SITE DATA	
ZONING:	LI
PROPOSED USE:	BAKERY PRODUCTION AND SHIPPING; F-1 MODERATE HAZARD FACTORY INDUSTRIAL
INGREDIENTS STORAGE:	S-1 MODERATE HAZARD STORAGE
LOT AREA GROSS:	38.932 AC (1,695,870 S.F.)
GROSS BUILDING AREA:	276,548 S.F.
BUILDING COVERAGE:	16%
TOTAL IMPERVIOUS AREA:	667,462 S.F.
TOTAL OPEN SPACE:	1,028,408 S.F.
PERCENT OPEN SPACE:	61%
NUMBER OF STORIES:	1
BUILDING HEIGHT:	34'-6" (MAX)
CONSTRUCTION TYPE:	II B NON-COMBUSTIBLE, UNPROTECTED
BUILDING IS FULLY SPRINKLERED	
ON-SITE PARKING REQ'D:	OFFICE: 20,910 S.F. @ 1 SPACE/300 S.F. = 70 SPACES REST OF BUILDING: 255,638 S.F. @ 1 SPACE/1000 S.F. = 256 SPACES TOTAL PARKING SPACES REQUIRED = 326 SPACES
TOTAL ON-SITE PARKING PROVIDED:	175 SPACES
STAFFING STATISTICS:	SHIPPING: 50 EMPLOYEES @ 25 PER SHIFT SHIPPING PARKING: 50 SPACES, INCL. 2 H.C. SPACES BAKERY/OFFICE: 81 EMPLOYEES @ 27 PER SHIFT BAKERY/OFFICE PARKING: 125 SPACES, INCL. 6 H.C. SPACES

**\* BENCH MARKS \***

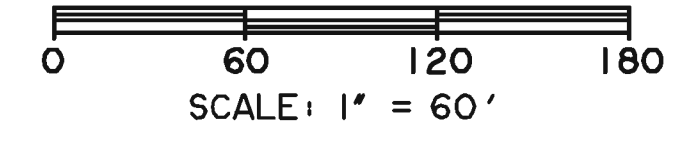
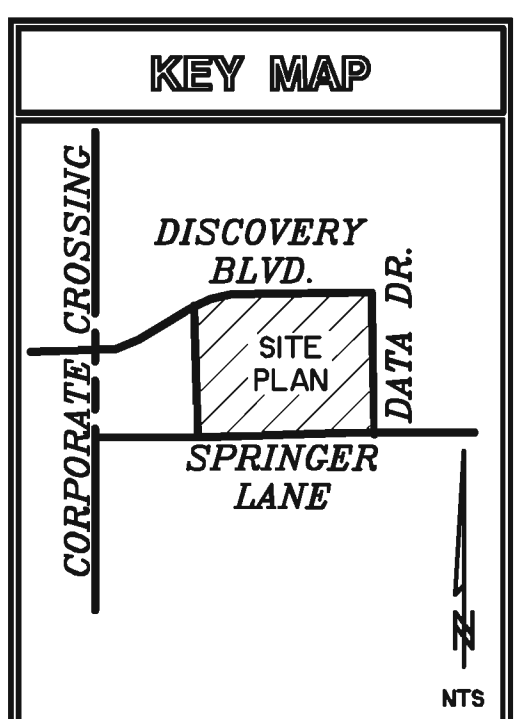
BM A  
 AN "X" CUT IN THE BACK OF CURB LOCATED AT THE SOUTH RIGHT-OF-WAY LINE OF SPRINGER ROAD ±2470' EAST OF THE INTERSECTION OF SPRINGER ROAD AND F.M. 549.  
 598.80 FT.

BM B  
 AN "X" CUT IN THE CENTERLINE OF WALK AT THE SOUTHEAST CORNER OF THE INTERSECTION OF DATA DRIVE AND DISCOVERY BLVD.  
 600.88 FT.

- GENERAL NOTES:**
- ALL COORDINATES ARE TO THE BACK OF CURB, UNLESS NOTED OTHERWISE.
  - DIMENSIONS SHOWN ARE TO THE BACK OF CURB, UNLESS NOTED OTHERWISE.
  - ALL PROPOSED CURB RADIUS ARE 2.5' B/C, WITHIN PARKING LOT, UNLESS NOTED OTHERWISE.
  - SEE ARCHITECTURAL PLANS FOR BLDG. DIMENSIONS.
  - ALL CONCRETE PAVEMENT SHALL HAVE 6" CURBS UNLESS OTHERWISE NOTED.
  - ALL DISTURBED AREAS TO BE HYDROMULCHED SEEDED UNLESS OTHERWISE NOTED.
  - ALL PROPOSED GATES ARE DOUBLE SWING PIPE GATES.

**LEGEND**

	PROPOSED LANDSCAPE SEEDING AREAS
	PROPOSED SIDEWALK
	5' - 3600 PSI CONC. (LIGHT DUTY)
	8' - 3600 PSI CONC. (HEAVY DUTY)
	PARKING STALL COUNT



OWNER INFORMATION  
 ALLEN FOODS, INC.  
 RICHARD BERGER  
 255 BUSINESS CENTER DRIVE  
 HORSHAM, PA 19044  
 PH. 314-513-3852  
 FAX. 314-485-2472

PREPARED BY:  
**WIER & ASSOCIATES, INC.**  
 ENGINEERS SURVEYORS LAND PLANNERS  
 701 HIGHLANDER BLVD., SUITE 300 ARLINGTON, TEXAS 76015 METRO (817)467-7700  
 8848 ELM STREET FRENCO, TEXAS 75034 METRO (214)397-9000  
 Texas Firm Registration No. F-2776 www.wierassociates.com



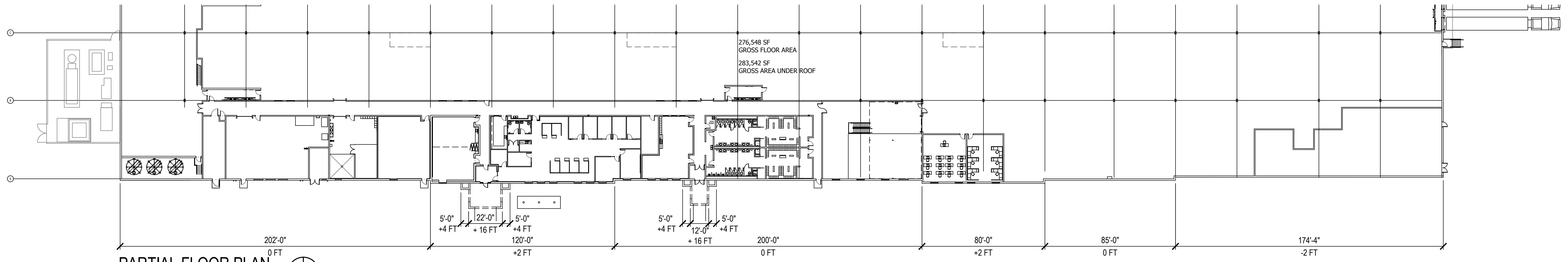
**BIMBO BAKERIES USA**  
 ROCKWALL, TEXAS

**SITE PLAN**

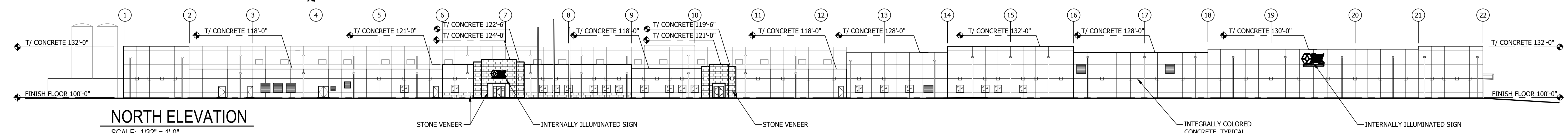
PRELIMINARY PLANS FOR PROJECT REVIEW. NOT FOR CONSTRUCTION, BIDDING OR PERMIT PURPOSES.  
 Prepared By/Or Under Direct Supervision Of  
 Ronald Ramirez, PE  
 Texas Registration No. 81821 On Date Shown Below.

COPYRIGHT ©  
 WIER & ASSOCIATES, INC.  
 ALL RIGHTS RESERVED  
 DATE: 02-23-2012  
 WA# 12002

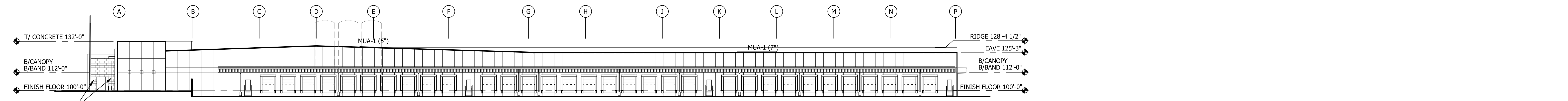
**SHEET NO. S102**



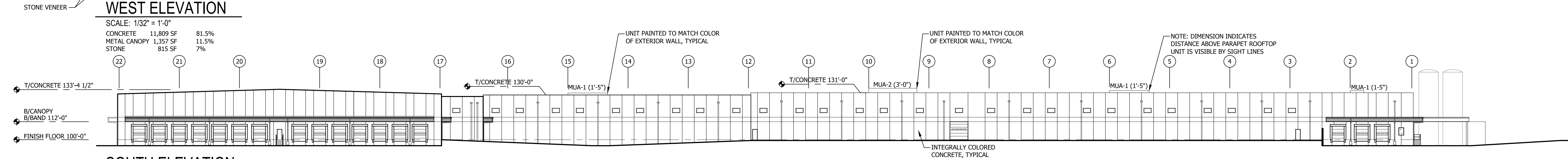
**PARTIAL FLOOR PLAN**  
SCALE: 1/32" = 1'-0"



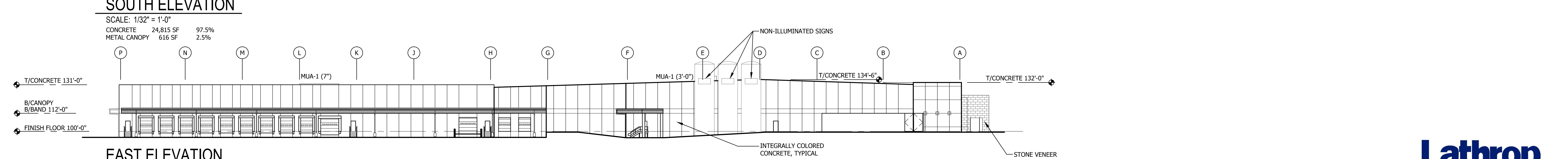
**NORTH ELEVATION**  
SCALE: 1/32" = 1'-0"  
CONCRETE 18,562 SF 92%  
STONE 1,455 SF 8%



**WEST ELEVATION**  
SCALE: 1/32" = 1'-0"  
CONCRETE 11,809 SF 81.5%  
METAL CANOPY 1,357 SF 11.5%  
STONE 815 SF 7%



**SOUTH ELEVATION**  
SCALE: 1/32" = 1'-0"  
CONCRETE 24,815 SF 97.5%  
METAL CANOPY 616 SF 2.5%



**EAST ELEVATION**  
SCALE: 1/32" = 1'-0"  
CONCRETE 16,413 SF 89%  
METAL CANOPY 940 SF 6%  
STONE 815 SF 5%



# BUILDING ELEVATIONS

SCALE: 1/32" = 1'-0"

**BIMBO BAKERIES USA**  
3055 DISCOVERY BLVD. ROCKWALL, TEXAS

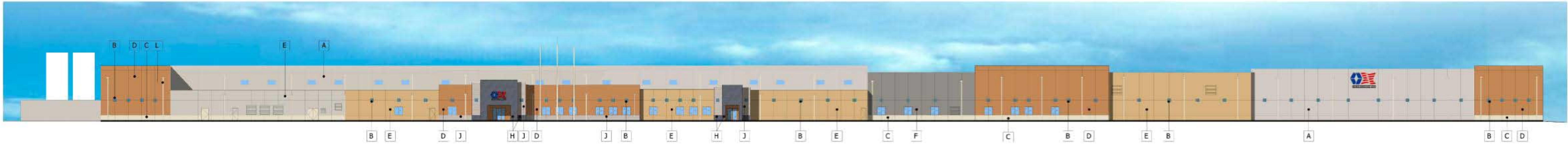
A-1



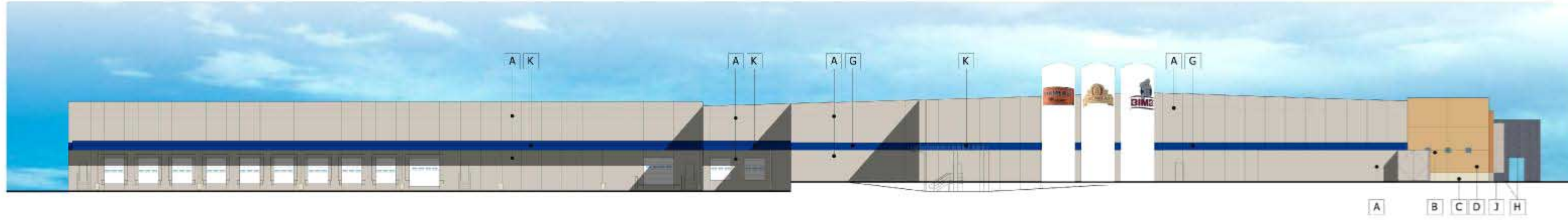
Construction Managers/General Contractors  
460 West Dussel Drive  
Maumee, Ohio 43537  
p | 419.893.7000 | 419.893.1741  
www.turnerconstruction.com/lathrop



SSOE, Inc.  
1001 Madison Ave.  
Toledo, OH 43604  
T 419-255-3830  
Project # 011-00878-00



NORTH ELEVATION



EAST ELEVATION

INTEGRALLY COLORED CONCRETE TO MATCH

A		SW 7022 Alpaca
B		SW 2864 Stratford Blue
C		SW 6119 Antique White
D		SW 6354 Armagnac
E		SW 2853 New Colonial Yellow
F		SW 7018 Dovetail
G		SW 6966 Blueblood

STONE VENEER

H		Coronado Stone Veneer Colosseum Travertine - Black Forest w/mica
J		Coronado Stone Veneer Colosseum Travertine - Roman

METAL CANOPY TO MATCH

K		SW 6966 Blueblood
---	--	-------------------

METAL DOWNSPOUTS TO MATCH

L		SW 6119 Antique White
---	--	-----------------------

ROOF MEMBRANE - WHITE TPO



COLOR ELEVATIONS AND MATERIAL SELECTIONS

A2

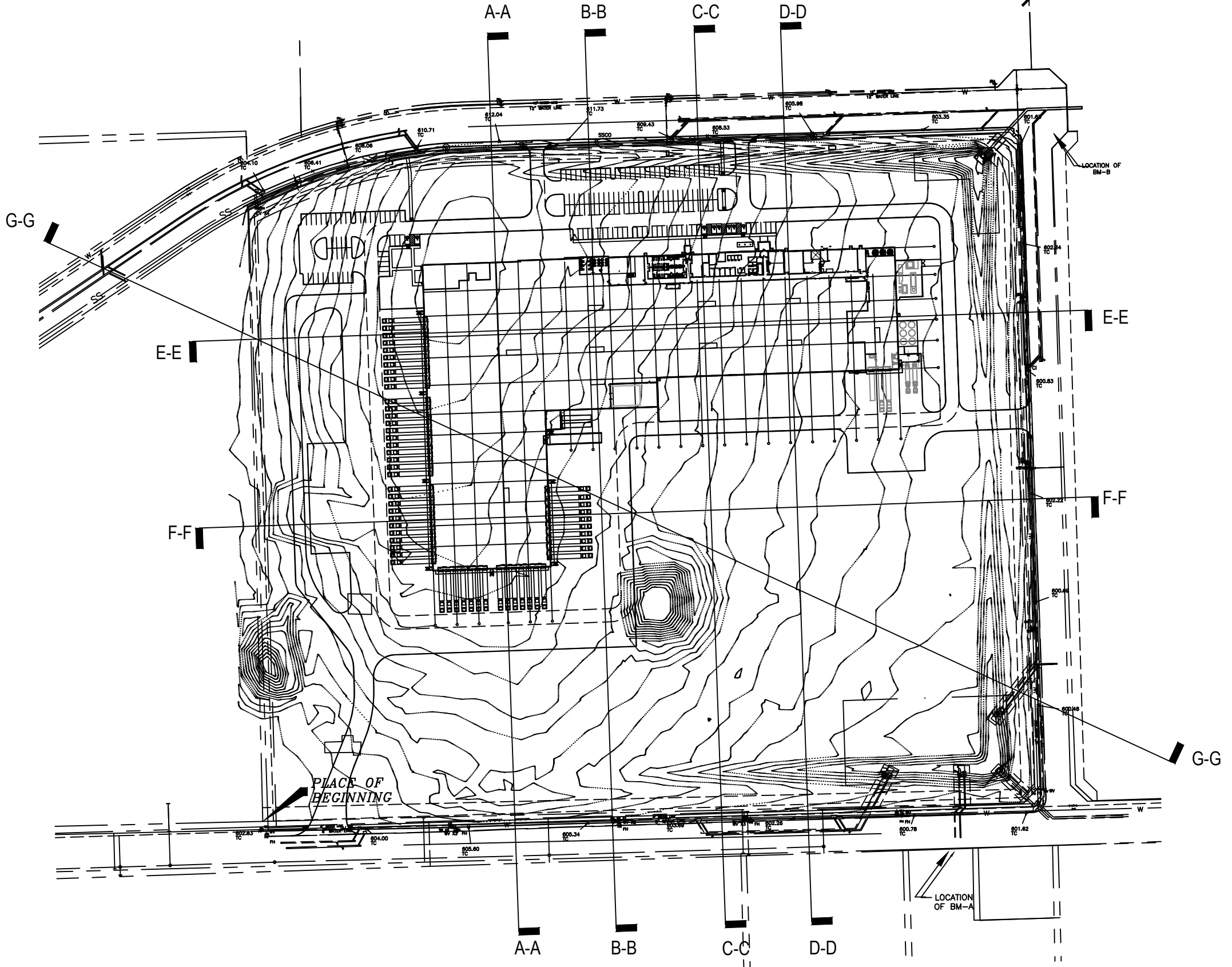
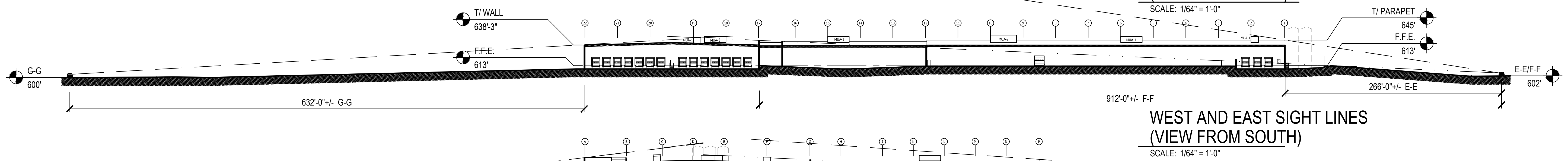
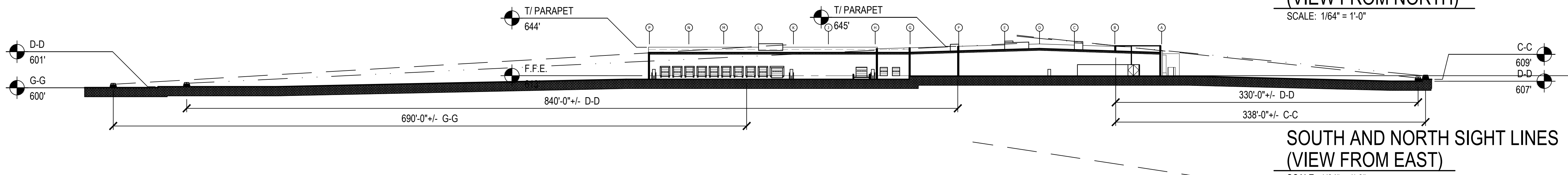
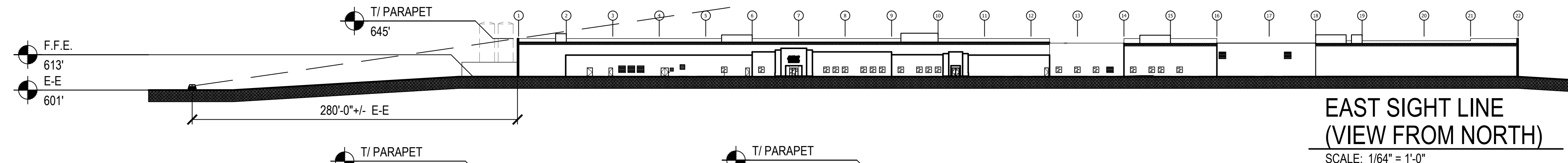
BIMBO BAKERIES USA  
3055 DISCOVERY BLVD. ROCKWALL, TEXAS



Construction Manager, Capital Construction  
180 West Duquesne Drive  
Madison, Ohio 43002  
P: 419.898.7000 F: 419.898.1741  
www.lathrop.com/lathrop.com/43002

**SSOE**  
2012-02-23

**SSOE, Inc.**  
1001 Madison Ave.  
Toledo, OH 43604  
T: 419-255-3830  
Project # 011-00878-00



# LINE OF SIGHT

SCALE: 1/32" = 1'-0"

**BIMBO BAKERIES USA**  
3055 DISCOVERY BLVD. ROCKWALL, TEXAS

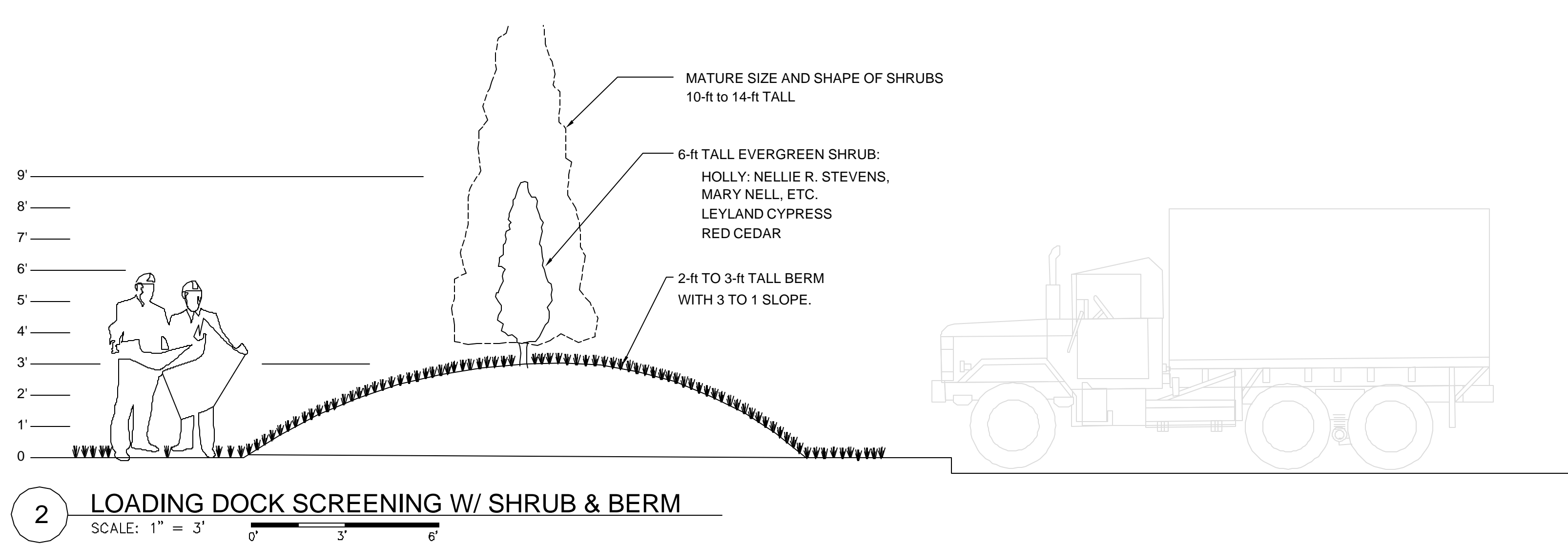
A-3



Construction Managers/General Contractors  
460 West Dussel Drive  
Maumee, Ohio 43537  
p | 419.893.7000 | f | 419.893.1741  
www.turnerconstruction.com/lathrop

**SSOE**  
2012-02-23

SSOE, Inc.  
1001 Madison Ave.  
Toledo, OH 43604  
T 419-255-3830  
Project # 011-00878-00



**PLANT MATERIAL PALETTE**

- STREET TREE - 3" CALIPER  
OR AT LEAST 8-FT TALL AT TIME OF PLANTING  
LIVE OAK  
SHUMARD RED OAK  
BUR OAK  
BALD CYPRESS
- PARKING LOT CANOPY TREE - 3" CALIPER  
OR AT LEAST 8-FT TALL AT TIME OF PLANTING  
CEDAR ELM  
LACEBARK ELM  
CHINESE PISTACHE
- PARKING LOT ORNAMENTAL TREE - 8'-10' TALL  
CRAPE MYRTLE  
YAUPON HOLLY
- PARKING LOT SCREENING SHRUBS  
DWARF BURFORD HOLLY  
ELEAGANUS  
ABELIA
- LOADING DOCK SCREENING SHRUBS  
NELLIE R. STEVENS HOLLY  
LEYLAND CYPRESS

**LANDSCAPE CALCULATIONS:**

LOT AREA GROSS: 38.932 AC = 1,695,870 S.F.  
10% = REQUIRED LANDSCAPE AREA = 169,587 S.F.  
53.4% = PROVIDED LANDSCAPE AREA = 910,226 S.F.  
19,631 S.F. + 98,551 S.F. = DETENTION POND AREA.  
TOTAL OPEN SPACE = 1,028,408 S.F.

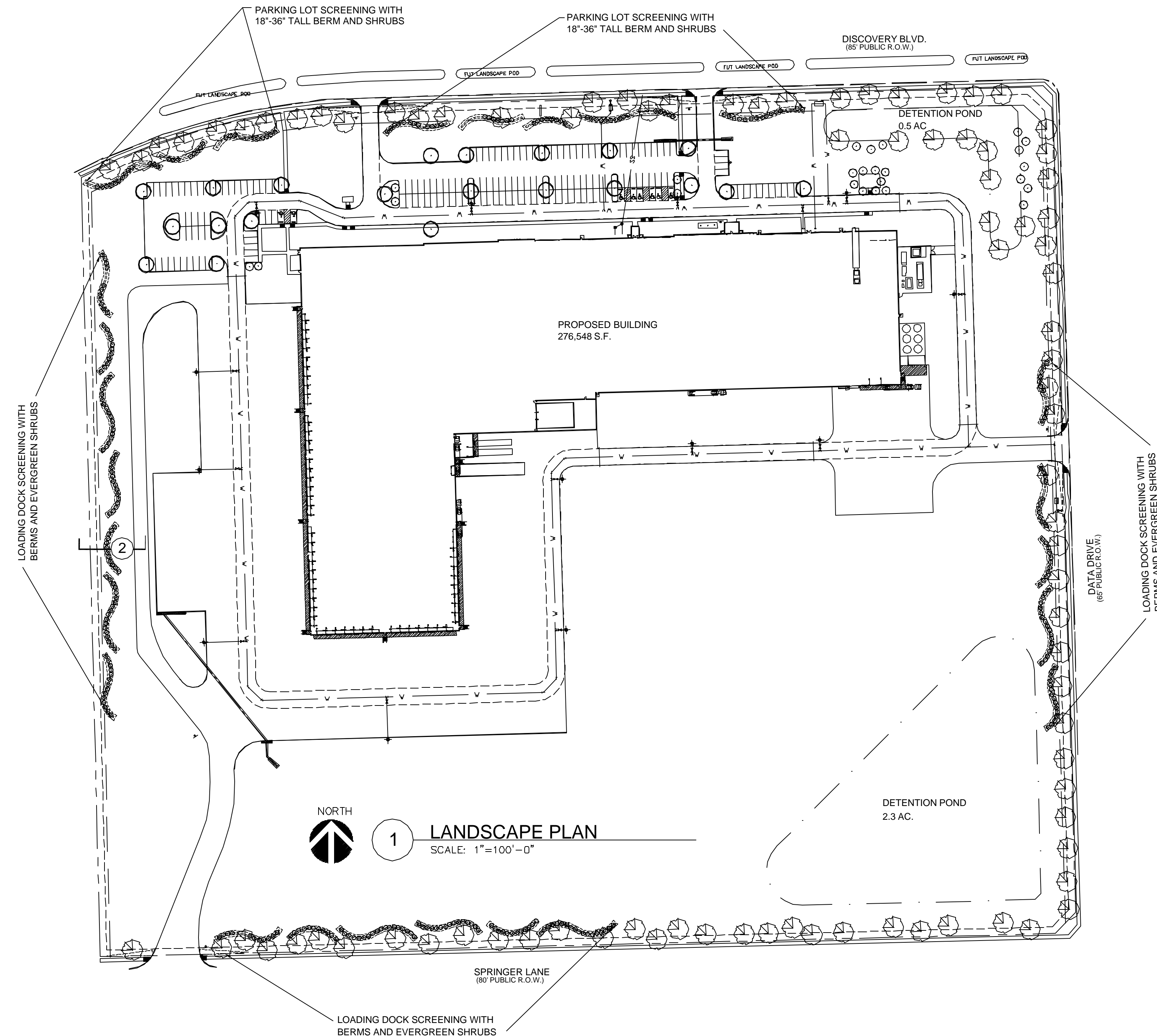
- STREET TREES: (1) PER 50 FT.
- DISCOVERY BLVD. = 1385/50' = (28) TREES REQ'D  
(28) TREES PROVIDED.
  - DATA DRIVE = 1160/50' = (24) TREES REQ'D  
(24) TREES PROVIDED.
  - SPRINGER LANE = 1377/50' = (28) TREES REQ'D  
(28) TREES PROVIDED.
- INTERIOR PARKING LOT: (1) CANOPY TREE/20 SP.  
(1) ORNAMENTAL TREE PER 30 SP.
- NORTH LOT = 125 SP/20 = (7) CANOPY TREES REQ'D.  
(13) CANOPY TREES PROVIDED.
  - 125 SP/30 = (4) ORNAMENTAL TREES REQ'D.  
(4) ORNAMENTAL TREES PROVIDED.
  - WEST LOT = 50 SP/20 = (3) CANOPY TREES REQ'D.  
(8) CANOPY TREES PROVIDED.
  - 50 SP/30 = (2) ORNAMENTAL TREES REQ'D.  
(2) ORNAMENTAL TREES PROVIDED.
- INTERIOR PARKING LOT AREA = 5% REQ'D.
- NORTH LOT = 62,477 S.F. - 5% = 3,124 S.F.  
LANDSCAPE AREA = 3,469 S.F. = 5.5%.
  - WEST LOT = 24,210 S.F. - 5% = 1,210 S.F.  
LANDSCAPE AREA = 2,091 S.F. = 8.6%.
- NOTE: ALL PARKING SPACES ARE WITHIN 50 FT OF A TREE.

**LANDSCAPE NOTES:**

TREES MUST BE PLANTED AT LEAST FIVE FEET FROM WATER, SEWER AND STORM SEWER LINES.  
AN AUTOMATIC, UNDERGROUND, IRRIGATION SYSTEM WITH RAIN AND FREEZE SENSORS WILL BE PROVIDED TO INSURE THE VIABILITY OF ALL LANDSCAPE VEGETATION.

**OWNER INFORMATION:**

ALLEN FOODS, INC.  
RICHARD BERGER  
255 BUSINESS CENTER DRIVE  
HORSHAM, PA 19044  
PH. 314-513-3852  
FAX. 314-485-2472



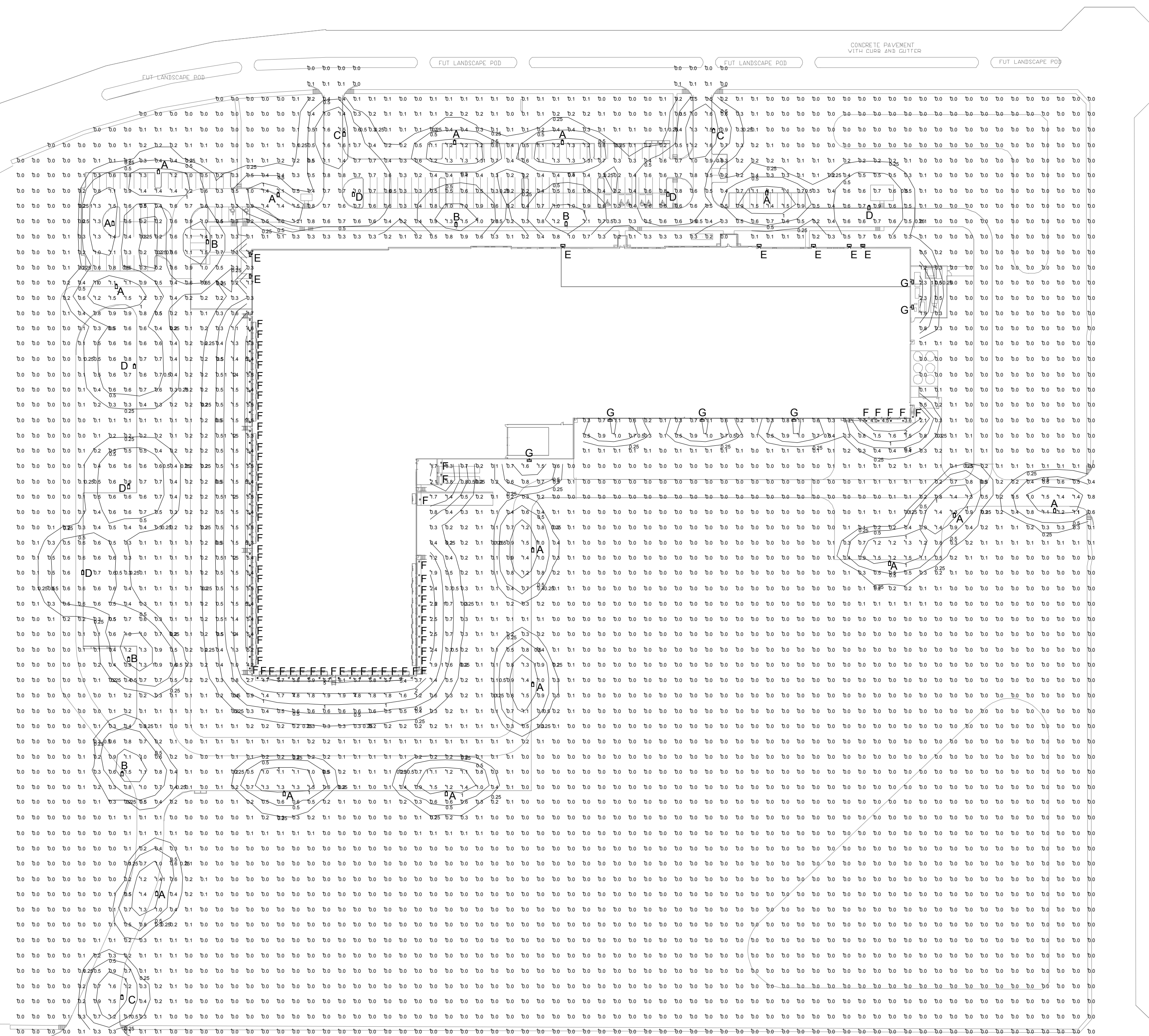
**LANDSCAPE PLAN**

**BIMBO BAKERIES USA**

3055 DISCOVERY BLVD., ROCKWALL, TEXAS

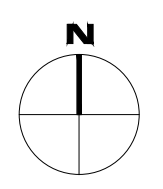
**DON C. WHEELER, ASLA**  
3116 West 5th Street Suite 103 Fort Worth, Texas 76107  
Office 817.335.1405 Fax 817.335.1415 don@dcwla.com

DESIGNED: DCW	FEBRUARY 23, 2012
DRAWN: DCW	SHEET LS1 OF LS1



LUMINAIRE SCHEDULE							
Symbol	Label	Qty	Catalog Number	Description	Lamp	Height	Mounting
	A	14	KAD LED 1 63853040K SR2	KAD LED WITH HLM MODULE, 63 LED'S, 530mA DRIVER, 4000K COLOR TEMPERATURE, TYPE 2 LENS	ONE 111-WATT LED, AIMED DOWN POS.	30 FT	POLE
	B	7	KAD LED 1 63853040K SR3	KAD LED WITH HLM MODULE, 63 LED'S, 530mA DRIVER, 4000K COLOR TEMPERATURE, TYPE 3 LENS	ONE 110-WATT LED, DOWNLIGHT POS.	30 FT	POLE
	C	3	KAD LED 1 63853040K SR4	KAD LED WITH HLM MODULE, 63 LED'S, 530mA DRIVER, 4000K COLOR TEMPERATURE, TYPE 4 LENS	ONE 108-WATT HLM LED, DOWNLIGHT POS.	30 FT	POLE
	D	7	KAD LED 1 63853040K SR5	KAD LED WITH HLM MODULE, 63 LED'S, 530mA DRIVER, 4000K COLOR TEMPERATURE, TYPE 5 LENS	ONE 107-WATT LED HLM, DOWNLIGHT POS.	30 FT	POLE
	E	7	OLW14 wFCOS	OUTDOOR LED WALLPACK SPECULAR LIGHT SHIELD ON FRONT OF FIXTURE, LED TEMP 60/62	ONE 26.3-WATT LED, AIMED DOWN POS.	8 FT	WALL
	F	71	VR4CV 85IL	VANDAL RESISTANT 12X12 SQUARE FIXTURE CEILING MOUNTED WITH CLEAR PRISMATIC LENS	ONE 65-WATT PHILIPS INDUCTION LAMP, VERTICAL BASE-UP POSITION	14 FT	RECESS
	G	6	OLW 31	Outdoor LED Wallpack with Type III optics	Nichia 219A 5000K	18 FT	WALL

PHOTOMETRIC PLAN  
SCALE: 1" = 75'



# PHOTOMETRIC PLAN

SCALE: 1" = 75'

**BIMBO BAKERIES USA**  
3055 DISCOVERY BLVD. ROCKWALL, TEXAS

E-1

2012-02-23

**Lathrop**  
Construction Managers/General Contractors  
460 West Dussel Drive  
Maumee, Ohio 43537  
p | 419.893.7000 f | 419.893.1741  
www.turnerconstruction.com/lathrop

**SSOE™**  
SSOE, Inc.  
1001 Madison Ave.  
Toledo, OH 43604  
T 419-255-3830  
Project # 011-00878-00

# NIGHTTIME™ FRIENDLY LIGHTING



Nighttime Friendly designates products with superior optical control that are consistent with the goals of USGBC LEED® and meet Green Globes™ product criteria for light pollution reduction. These products are full cutoff and no more than 10% of the lumens from the luminaire are emitted above 80 degrees from nadir.

## Acuity Brands – Nighttime Friendly™ Designation

For years, Acuity Brands has been actively involved in developing products and standards focusing on minimizing the impact of electric lighting systems of the nighttime environment. Our brands are members and contribute to the International Dark-Sky Association (IDA) and we are active in various outdoor lighting committees of the Illuminating Engineering Society (IESNA). We are a member of the IDA / IESNA Model Lighting Ordinance task group. We are a member of the US Green Building Council and provide a variety of lighting solutions focused on achieving the LEED credit SSB for light pollution reduction. Acuity Brands has some of the most experienced and knowledgeable optical designers working with our product development teams to continue to develop responsible lighting solutions.

## What does Nighttime Friendly Mean?

Because there are no lighting industry standards recognizing products that minimize obtrusive nighttime lighting, Acuity Brands has established a designation with very strict requirements, based on photometric test data. Our Nighttime Friendly designation requires that the lighting product has no uplight and no more than 10% of the total lumens between 80-90 degrees. This criterion is consistent with LEED and Green Globes guidelines for environmental sustainability. Our Nighttime Friendly designation focuses on no uplight as well as high angle brightness and requires laboratory test data based on IESNA standards. The Acuity Brands Conyers lab is NVLAP accredited, an accreditation that requires a strict quality process and 3rd party audit by the National Institute of Standards & Technology (NIST). Independent labs have not gained this accreditation.

## How does Nighttime Friendly compare with other designations?

### IDA Fixture Seal of Approval

The IDA Fixture Seal of Approval does not have specific, quantifiable criteria. In general, the IDA Fixture Seal of Approval focuses on products that have no uplight. Since Acuity Brands Nighttime Friendly designation is more stringent and can be verified with any commercial software, we typically do not list products with IDA.

### Star View™ Compliant

Hubbell Outdoor and Spaulding brands of lighting products promote the Star View Compliant designation, used to identify full cutoff optics. This designation is not as stringent as the Acuity Brands Nighttime Friendly designation because it does not stipulate a limit on the high angle lumens that impact glare.

## Are there other considerations for minimizing obtrusive outdoor lighting?

### Daytime and nighttime aesthetics

Beyond considerations of uplight, there are other optical considerations to help you select a quality lighting system. Many times, the lighting system must offer both daytime and nighttime aesthetics. Traditionally, this required lighting systems that emitted a significant portion of light into the sky and emit light at high angles resulting in glare. We offer many options to address the need for daytime and nighttime aesthetics.

### Light trespass

Another key aspect to consider is limiting the amount of light emitted off of the property that trespasses onto adjacent properties. This is especially important in areas where commercial and residential properties are adjacent to each other. To address this concern, lighting products should be selected to minimize high angle brightness and poles located at or near the perimeter of the site should utilize sharp cutoff optics that limit light behind the pole.

### Reducing light levels late at night

Many communities encourage businesses to reduce light levels late at night when activity in those areas is minimal. In addition, some areas are encouraged to turn off the lighting, such as sporting facilities. This can be accomplished by turning off some luminaires or zones. Advanced lighting systems can even detect motion and reduce the lighting in each fixture when there is not activity.

## Why should I select Acuity Brands products for applications with environmental considerations?

Acuity Brands provides many options for responsible outdoor environments. We demonstrate our commitment to the nighttime environment through our development of superior optics, our involvement in industry activities to reduce the impact of obtrusive nighttime lighting and through our corporate commitment to environmental sustainability. We provide reliable test data and have made investments in the accreditation of our Conyers testing laboratory. Our sales personnel and technical support staff stand ready to help you identify the most effective outdoor lighting solutions and validate the performance of these systems.

### IESNA CUTOFF CLASSIFICATIONS

CLASSIFICATION	DEFINITION	BENEFITS	LIMITATIONS
Full Cutoff	Zero intensity at or above horizontal (90° above nadir) and limited to a value not exceeding 10% of lamp lumens at or above 80°.	Limits spill light onto adjacent property, reduces glare. No light is emitted directly from the luminaire into the sky.	May reduce pole spacing to maintain uniformity and increase pole and luminaire quantities.
Cutoff	Intensity at or above 90° (horizontal) no more than 2.5% of lamp lumens, and no more than 10% of lamp lumens at or above 80°.	Small increase in high-angle light allows increased pole spacing.	May allow some uplight from luminaire. Typically a small overall impact on sky glow.
Semi-cutoff	Intensity at or above 90° (horizontal) no more than 5% of lamp lumens and no more than 20% at or above 80°	High-angle light accents taller vertical surfaces such as buildings. Most light is still directed downward.	Little control of light at property line. Potential for increased glare when using high wattage luminaires. Typically directs more light into the sky than cutoff.
Non-cutoff	No limitations on light distribution at any angle.	Uniform luminous surfaces such as internally illuminated signs or globes. Wattage should be limited. Suitable for sports lighting, facade, landscape or other applications where luminaires are tilted due to limitations in pole or fixture locations.	Location and aiming are critical. Most likely of all categories to produce offensive brightness and sky glow.

### Notes

See [www.lithonia.com/nighttimefriendly](http://www.lithonia.com/nighttimefriendly) for full details.



# LUMINAIRE CLASSIFICATION SYSTEM

In 2007 the IES defined a new classification system for outdoor luminaires that evaluates the photometric performance of a luminaire based on light emitted into various solid angles that impact upright, backlight and high angle glare zones. This IES standard is available in their publication, TM-15, "Luminaire Classification System for Outdoor Luminaires".

To the right is a 3-D representation of the LCS model including the sub angles for each zone. Below that is a graphical representation of how such data for a specific luminaire is represented in the Acuity online Photometric Viewer.

The forward and backlight zones near or slightly below horizontal provide a useful analysis of high angle brightness, often relating to objectionable glare. Keep in mind however, that glare relates to other factors including the size of the source and specific intensity at discrete angles. So additional research will continue to evaluate how to best quantify glare.

Evaluation of backlight must consider where the pole is located in relation to the property line.

And finally, in considering sky glow impact, the light at or near horizontal has a greater impact on the scattering of light in the atmosphere – resulting in a higher degree of sky glow over a community.

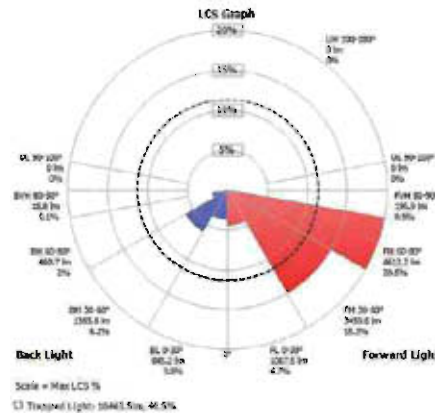
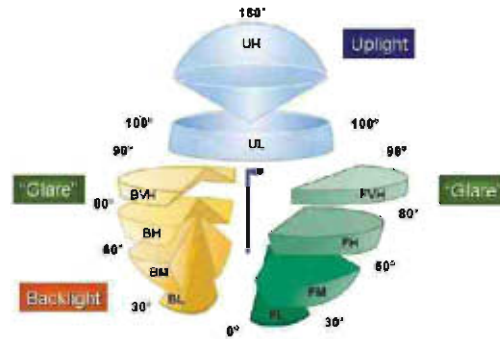
## BUG Ratings

In February 2009, the TM-15 standard added zonal lumen limits defining Backlight (B), Uplight (U) and Glare (G) ratings. The zonal lumens in specific solid angles define a rating from 1 to 5 for each of three categories, with 1 being the most restrictive.

You will notice that the upright category includes lumens that are in the very high zones below horizontal. The reason for this is because upright – or sky glow, is impacted most by light emitted at or near horizontal because horizontal light causes the most scatter in the atmosphere as it picks up and reflects off of particulate in the air (such as dust particles, air pollution or even natural phenomena such as fog).

You will also notice there are two tables for the glare ratings. The zonal lumen thresholds are different for luminaires that have a symmetric distribution such as a Type V or Type V square from those that have a longitudinal or forward throw type of distribution such as Type I, II, III or IV.

BUG ratings for our products are available using the Acuity online Photometric Viewer.



BACKLIGHT/TRESPASS						
SECONDARY SOLID ANGLE	B0	B1	B2	B3	B4	B5
BH	110	500	1000	2500	5000	>5000
BM	220	1000	2500	5000	8500	>8500
BL	110	500	1000	2500	5000	>5000

UPLIGHT/SKYGLOW						
SECONDARY SOLID ANGLE	U0	U1	U2	U3	U4	U5
UH	0	10	100	500	1000	>1000
UL	0	10	100	500	1000	>1000
FVH	10	75	150	>150	—	—
BVH	10	75	150	>150	—	—

GLARE							
SECONDARY SOLID ANGLE		G0	G1	G2	G3	G4	G5
GLARE FOR TYPES I, II, III, IV, V and V SQUARE	FVH	10	250	375	500	750	>750
	BVH	10	250	375	500	750	>750
	FH	660	1800	5000	7500	12000	>12000
GLARE FOR TYPES I, II, III AND IV	BH	110	500	1000	2500	5000	>5000
GLARE FOR TYPES V AND V SQUARE	BH	660	1800	5000	7500	12000	>12000

## FEATURES & SPECIFICATIONS

### INTENDED USE

Provides maintenance-free general illumination for outdoor use in commercial applications such as retail, education, multi-unit housing and storage. Ideal for lighting building facades, parking areas, walkways, garages, loading areas and any other outdoor space requiring reliable safety and security.

### CONSTRUCTION

Sturdy weather-resistant aluminum housing with a bronze finish, standard unless otherwise noted. A clear polycarbonate lens protects the optics from moisture, dirt and other contaminants.

Fixture is maintenance-free.

### OPTICS

8 high performance 5470K LEDs are powered by a multi-volt (120V-277V) LED driver that uses 26.45 input watts and provides 1,436 delivered lumens. 50,000 hour average LED life means no lamp replacement.

See Lighting Facts label on page 2 for performance details.

### ELECTRICAL

Operating temperature -40°C to 40°C.

Adjustable Dusk-to-dawn, multi-volt photocell standard automatically turns light on at dusk and off at dawn for convenience and energy savings.

Photocell can be disabled by rotating the photocell cover.

6KV surge protection standard.

### INSTALLATION

Surface or recessed mount. A universal junction box is included standard.

All mounting hardware included.

### LISTINGS

UL Certified to US safety standards. Optional (120V) C-UL Certified to Canadian safety standards. Wet location listed.

Tested in accordance with IESNA LM-79 and LM-80 standards.

### WARRANTY

Five-year limited warranty.

Full warranty terms located at [www.AcuityBrands.com/CustomerResources/Terms\\_and\\_Conditions.aspx](http://www.AcuityBrands.com/CustomerResources/Terms_and_Conditions.aspx).

NOTE: Specifications are subject to change without notice.

Catalog Number
Notes
Type

Outdoor General Purpose

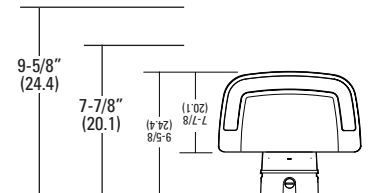
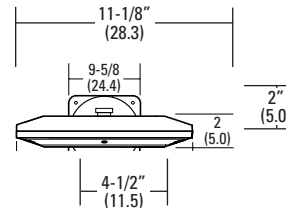
# OLW14

LED WALL PACK



### Dimensions

All dimensions are inches (centimeters)



### ORDERING INFORMATION

For shortest lead times, configure products using **bolded options**.

**Example:** OLW14

Series	Color Temperature (CCT)	Voltage	Features	Finish
<b>OLW14</b> 1400 lumen LED wall pack	<b>(blank)</b> 5700K <sup>1</sup>	<b>(blank)</b> MVOLT (120V-277V) 120 120 Volt (available in white only)	<b>(blank)</b> MVOLT photocell included CUL PE Canadian-approved 120V photocell	<b>(blank)</b> Bronze WH White

**Accessories:** Order as separate catalog number.

FCOS M24	Full cutoff shield
FCOS WH M24	Full cutoff shield, white

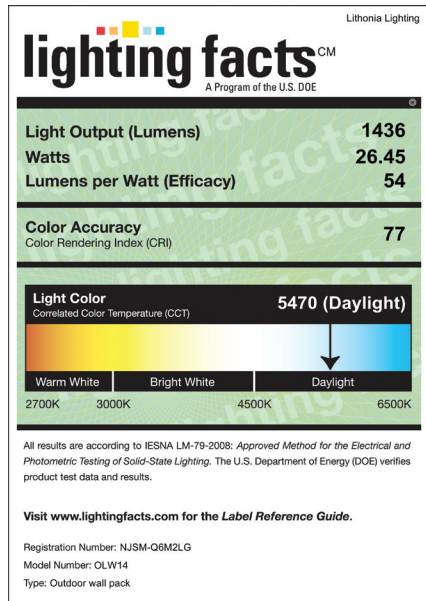
### Notes

1 Correlated Color Temperature (CCT) shown is nominal per ANSI C78.377-2008.

# LED Wall Pack

## PHOTOMETRICS

Full photometric data report available within 2 weeks from request. Consult factory.  
Tested in accordance with IESNA LM-79 and LM-80 standards.



## FEATURES & SPECIFICATIONS

### INTENDED USE

Provides maintenance-free general illumination for outdoor use in residential and commercial applications such as retail, education, multi-unit housing and storage. Ideal for lighting building facades, parking areas, walkways, garages, loading areas and any other outdoor space requiring reliable safety and security.

### CONSTRUCTION

Sturdy weather-resistant aluminum housing with a bronze finish.

High performance LEDs are powered by an MVOLT driver that provides 2,300/3,100 delivered lumens at 5000K. 50,000 hour average LED life means no lamp replacement. Fixture is maintenance-free.

Operating temperature -30°C to 40°C.

Adjustable Dusk-to-Dawn, photocell standard automatically turns light on at dusk and off at dawn for convenience and energy savings.

Photocell can be disabled by rotating the photocell cover.

### OPTICS

Precision-molded acrylic lenses provide optimal luminaire spacing with Type 3 distribution.

Nighttime Friendly™ full cutoff above 90° angle, standard.

### INSTALLATION

Wall or arm mount (mounting arm sold separately).

All mounting hardware included.

### LISTINGS

UL Certified to US safety standards. C-UL Certified to Canadian safety standards. Wet location listed.

Tested in accordance with IESNA LM-79 and LM-80 standards. DLC qualified product.

### WARRANTY

Five-year limited warranty.

Full warranty terms located at [www.AcuityBrands.com/CustomerResources/Terms\\_and\\_Conditions.aspx](http://www.AcuityBrands.com/CustomerResources/Terms_and_Conditions.aspx).

NOTE: Specifications are subject to change without notice.

Catalog Number
Notes
Type

### Outdoor General Purpose

# OLW

LED WALL PACK

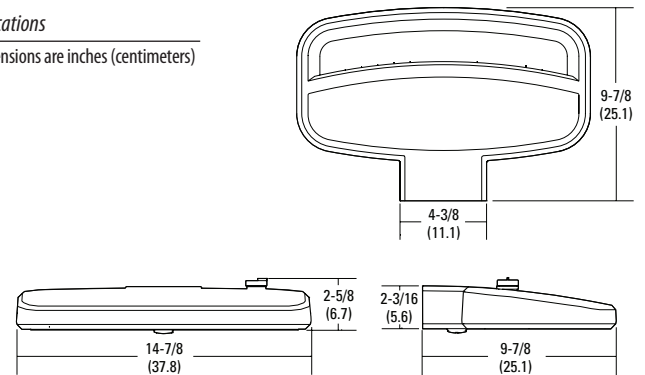


DESIGNLIGHTS  
CONSORTIUM



### Specifications

All dimensions are inches (centimeters)



### ORDERING INFORMATION

For shortest lead times, configure products using **bolded options**.

**Example: OLW 23**

OLW	23			
Series	Lumens / Color Temperature (CCT)	Voltage	Features	Finish
<b>OLW</b> LED Wall Light	23 2300 delivered lumens / 5000K <sup>1</sup> 31 3100 delivered lumens / 5000K <sup>1</sup>	<b>(blank)</b> MVOLT (120V-277V)	<b>(blank)</b> Photocell included	<b>(blank)</b> DDB Dark Bronze

**Accessories:** Order as separate catalog number.

OMA M6 14" Aluminum Mounting Arm

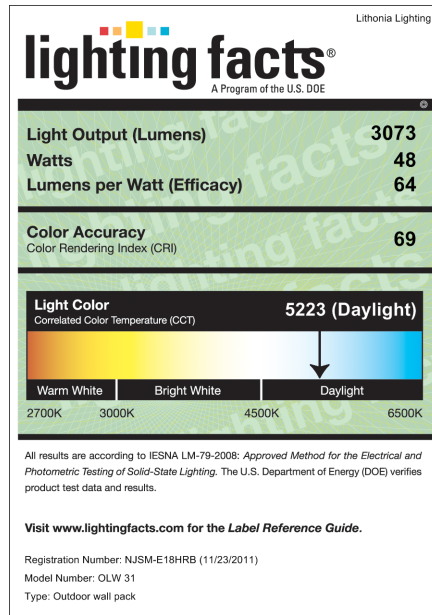
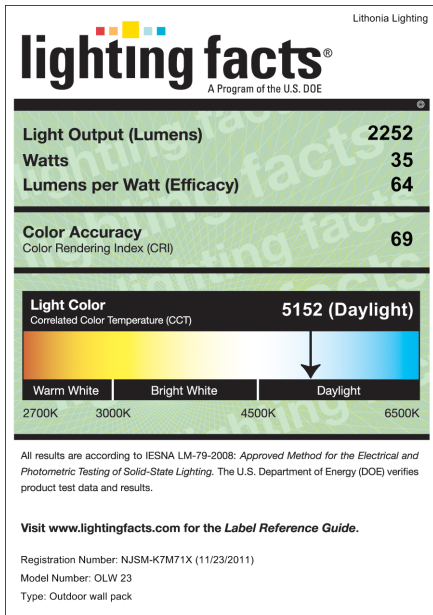
### Notes

1 Correlated Color Temperature (CCT) shown is nominal per ANSI C78,377-2008.

# OLW LED Wall Light

## PHOTOMETRICS

Full photometric data report available within 2 weeks from request. Consult factory.  
Tested in accordance with IESNA LM-79 and LM-80 standards.



## FEATURES & SPECIFICATIONS

**INTENDED USE** — Induction lighting technology provides extreme long life for rough service (vandal resistant) applications. Ideal for areas that require higher levels of protection from physical assault, as well as areas where maintenance is an issue. Tunnels, airports, freezers, and public facilities are typical installation areas. Certain airborne contaminants can diminish integrity of acrylic. [Click here for Acrylic Environmental Compatibility table for suitable uses.](#) Designed for areas which require long life operation with little or no maintenance.

**CONSTRUCTION** — Housing — One-piece die-cast aluminum, low copper alloy. Provided with mounting brackets for four-point mounting. Weatherproof junction box provided as standard for surface conduit wiring.

**Gasket:** One-piece, closed-cell neoprene pad gasket helps seal against mounting surface. One-piece silicone "O" ring gasket forms continuous seal between lens and housing.

**Finish:** Post-painted after fabrication in white polyester powder coat.

**OPTICS** — Conical reflector and clear prismatic, injection-molded, UV stabilized polycarbonate lens, .125" thickness provide symmetric distribution and low-brightness uniformity with maximum spacing-to-mounting height ratios. Lens is secured to housing by stainless steel tamper-resistant Torx® T-20 or standard stainless steel slotted hex-head screws (four of each included).

**ELECTRICAL** — High-Frequency Generator — Supplies high-frequency power to the discharge vessel (lamp) to initiate and maintain a gas discharge for a rated 100,000 hours of life. Suitable for ambients ranging from -40° to 25°C. 120V, 240V and TVOLT generator.

**Power Coupler:** Induction coil which transfers energy from the generator to the discharge vessel.

**Discharge Vessel:** Glass bulb which contains a mixture of low-pressure mercury vapor and inert buffer gas. The wall of the discharge vessel is coated with a fluorescent powder which produces light at 3000K color and 80+ CRI.

**INSTALLATION** — Ceiling mounted. Mounting brackets and junction box allow fixture to be installed without ever opening. For outlet box installation, see L/JB option. Wire leads will be routed out the rear conduit opening.

**LISTINGS** — UL listed for -40°C - 25°C and wet locations. Listed and labeled to comply with Canadian and Mexican Standards (see Options).

**Note:** Specifications subject to change without notice.

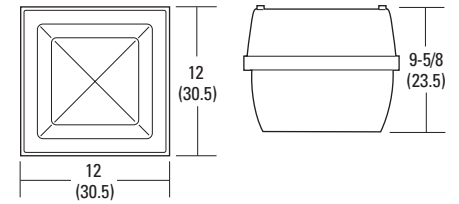
Catalog Number
Notes
Type

### Rough Service Fixture

# VR4CV

### INDUCTION LIGHTING

Ceiling Mounted



#### Specifications

Height: 12" (30.5)  
 Width: 12" (30.5)  
 Depth: 9-5/8" (23.5)

All dimensions are shown in inches (centimeters) unless otherwise specified.

#### ORDERING INFORMATION

Lead times will vary depending on options selected. Consult with your sales representative.

**Example:** VR4CV 85IL 120 EC LPI

VR4CV	/						LPI
Series	Wattage/Color temperature				Voltage	Options	Lamped
VR4CV	55IL	55W Icetron™ Induction Lighting System	(blank)	3500K (80 CRI)	120	Shipping installed in fixture	LPI
	85IL	85W Icetron™ Induction Lighting System	41	4100K (80 CRI)	240	EC Emergency circuit (incandescent - 25W max - DC bayonet base) <sup>2</sup>	Lamp included (stand)
					TVOLT <sup>1</sup>	PE Photoelectric cell	
						L/JB Less junction box	
						CSA CSA Certified	
						NOM Listed and labeled to comply with Mexican standards	

#### Notes

- 1 Available with 85IL only (200-277V)
- 2 Lamp included and installed.

# VR4C Induction Lighting, Ceiling-Mounted

## PHOTOMETRICS

Calculated using the zonal cavity method in accordance with IESNA LM41 procedures. Floor reflectances are 20%. Lamp configuration shown is typical. Full photometric data available upon request.

### VR4CV 85W Induction Lamp Test No. LTL 7676

#### COEFFICIENT OF UTILIZATION

r <sup>f</sup> r <sup>c</sup> r <sup>w</sup>	COEFFICIENT OF UTILIZATION							
	70%	80%		10%		50%		0%
0	81	81	81	81	71	71	71	58
1	70	64	60	56	56	53	50	39
2	62	54	48	42	47	42	38	30
3	55	46	39	33	40	34	30	23
4	50	40	33	27	35	29	24	19
5	46	35	28	23	31	25	20	16
6	42	31	24	19	27	22	18	13
7	39	28	22	17	25	19	15	11
8	36	26	19	15	23	17	13	10
9	34	23	17	13	21	16	12	9
10	31	22	16	12	19	14	11	8

#### ZONAL LUMENS SUMMARY

Zone	Lumens	% lamp
0°-30°	525	8.8
0°-40°	868	14.5
0°-60°	1765	29.4
0°-90°	3450	81.6
90°-180°	780	13.0
0°-180°	4230	*70.5

\*Fixture efficiency

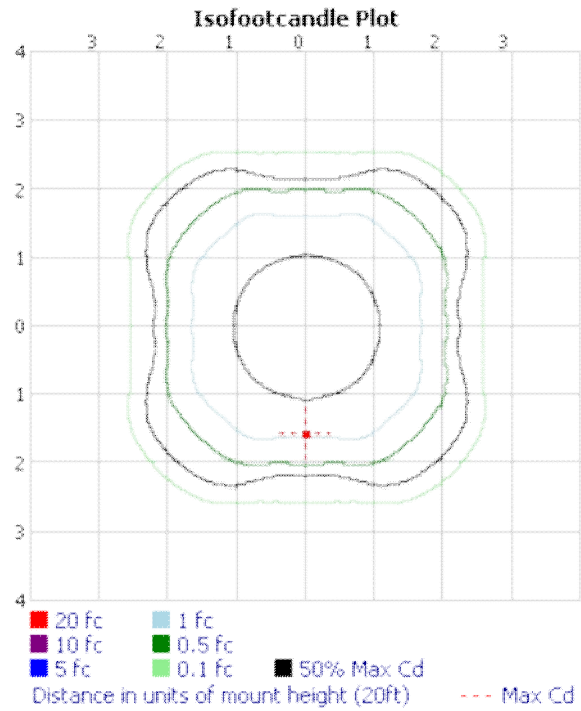
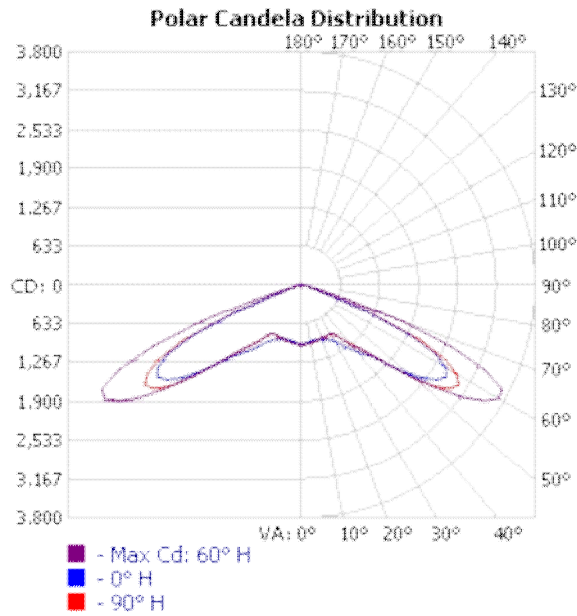
OUTDOOR PHOTOMETRIC REPORT  
 CATALOG: KAD LED 1 63B530/40K SR5



TEST #: LTL19972  
 CATALOG #: KAD LED 1 63B530/40K SR5  
 LUMINAIRE: KAD LED WITH HLM MODULE, 63 LED'S, 530MA DRIVER, 4000K COLOR TEMPERATURE, TYPE 5 LENS  
 LAMP: ONE 107-WATT LED HLM, DOWNLIGHT POS.  
 LAMP OUTPUT: 1 LAMP(S), RATED LUMENS/LAMP: 8452.019  
**TEST BASED ON ABSOLUTE PHOTOMETRY \***  
 BALLAST: LEDINTA 530C280DO  
 INPUT WATTAGE: 108  
 LUMINOUS OPENING: RECTANGLE (L: 10.2", W: 10.56")



MAX CD: 3,703.0 AT HORIZONTAL: 60°, VERTICAL: 60°  
 ROADWAY CLASS: TYPE VS





OUTDOOR PHOTOMETRIC REPORT  
 CATALOG: KAD LED 1 63B530/40K SR5



ZONAL LUMEN SUMMARY

	ZONE	LUMENS	% LAMP
	0-30	795.1	9.4%
	0-40	1,497.7	17.7%
	0-60	5,462.5	64.6%
	60-90	2,989.5	35.4%
DLOR	0-90	8,452.0	100%
ULOR	90-180	0	0%
LOR	0-180	8,452.0	100%
ULR	90-180	0	0%

LUMENS PER ZONE

ZONE	LUMENS	% TOTAL	ZONE	LUMENS	% TOTAL
0-10	91.3	1.1%	90-100	0	0%
10-20	265.6	3.1%	100-110	0	0%
20-30	438.1	5.2%	110-120	0	0%
30-40	702.6	8.3%	120-130	0	0%
40-50	1,336.2	15.8%	130-140	0	0%
50-60	2,628.7	31.1%	140-150	0	0%
60-70	2,503.7	29.6%	150-160	0	0%
70-80	446.4	5.3%	160-170	0	0%
80-90	39.4	0.5%	170-180	0	0%

ROADWAY SUMMARY

DISTRIBUTION:	TYPE VS	
MAX CD, 90 DEG VERT:	0	
MAX CD, 80 TO <90 DEG:	151.0	
	LUMENS	% LAMP
DOWNWARD STREET SIDE:	4,225.8	50%
DOWNWARD HOUSE SIDE:	4,225.8	50%
DOWNWARD TOTAL:	8,451.5	100%
UPWARD STREET SIDE:	0	0%
UPWARD HOUSE SIDE:	0	0%
UPWARD TOTAL:	0	0%
TOTAL LUMENS:	8,451.5	100%

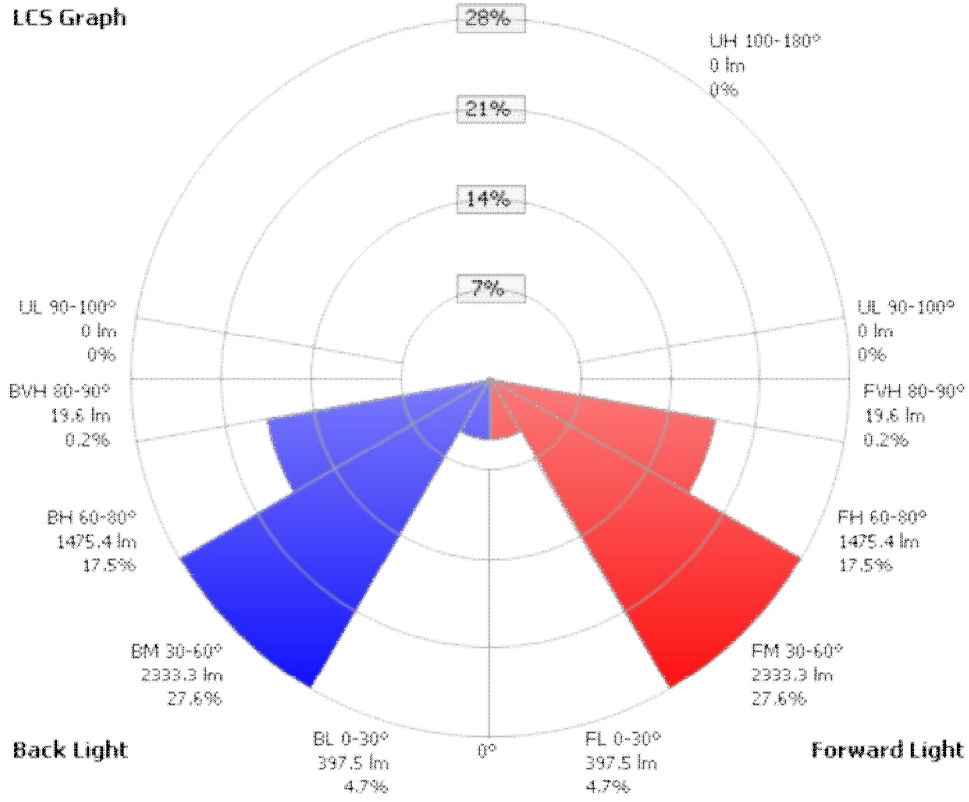
LCS TABLE

BUG RATING	B3 - U0 - G1	
FORWARD LIGHT	LUMENS	LUMENS %
LOW(0-30):	397.5	4.7%
MEDIUM(30-60):	2,333.3	27.6%
HIGH(60-80):	1,475.4	17.5%
VERY HIGH(80-90):	19.6	0.2%
BACK LIGHT		
LOW(0-30):	397.5	4.7%
MEDIUM(30-60):	2,333.3	27.6%
HIGH(60-80):	1,475.4	17.5%
VERY HIGH(80-90):	19.6	0.2%
UPLIGHT		
LOW(90-100):	0	0%
HIGH(100-180):	0	0%
TRAPPED LIGHT:	0.5	0%

OUTDOOR PHOTOMETRIC REPORT  
 CATALOG: KAD LED 1 63B530/40K SR5



LCS Graph



Scale = Max LCS %

↻ Trapped Light: 0.5lm, 0%

OUTDOOR PHOTOMETRIC REPORT  
 CATALOG: KAD LED 1 63B530/40K SR5



CANDELA TABLE - TYPE C

	0	5	10	15	20	25	30	35	40	45	50	55	60	65	70	75	80	85	90	
0	976	976	976	976	976	976	976	976	976	976	976	976	976	976	976	976	976	976	976	976
5	952	956	955	956	958	959	961	962	962	964	964	967	966	967	967	968	968	971	971	971
10	928	931	931	933	936	938	942	944	946	949	950	953	953	954	954	955	955	959	959	959
15	929	932	931	931	931	931	932	933	932	932	932	934	935	937	940	942	945	949	950	950
20	954	955	952	949	946	941	938	932	924	921	920	924	925	929	933	936	940	945	947	947
25	994	994	989	983	976	967	952	936	925	923	923	925	923	923	924	924	929	936	939	939
30	1059	1054	1045	1035	1021	997	965	940	930	931	929	926	920	914	910	908	912	921	927	927
35	1234	1227	1216	1204	1183	1144	1096	1065	1050	1044	1040	1040	1033	1023	1015	1009	1014	1030	1040	1040
40	1430	1423	1413	1404	1383	1351	1328	1327	1319	1312	1304	1303	1295	1282	1263	1250	1248	1264	1278	1278
45	1698	1705	1716	1713	1697	1678	1653	1632	1614	1609	1603	1610	1626	1636	1630	1612	1612	1629	1643	1643
50	2221	2234	2257	2291	2325	2348	2309	2266	2240	2241	2248	2277	2314	2335	2326	2291	2289	2315	2345	2345
55	2697	2716	2764	2870	3011	3119	3096	3020	2965	2982	3016	3089	3176	3210	3145	3001	2924	2916	2946	2946
60	2711	2731	2797	2990	3299	3570	3637	3574	3515	3528	3562	3623	3703	3633	3423	3123	2931	2876	2904	2904
65	1929	1967	2047	2269	2663	3068	3256	3261	3238	3225	3243	3277	3292	3127	2815	2439	2210	2124	2132	2132
70	511	508	554	673	928	1307	1610	1731	1794	1838	1829	1815	1727	1376	972	682	539	484	470	470
75	209	216	221	234	265	313	373	419	449	467	452	429	370	299	245	208	187	178	178	178
80	106	84	87	100	113	128	140	141	147	151	141	134	125	106	87	76	71	71	77	77
85	22	21	22	28	34	35	28	22	23	29	31	31	34	33	27	22	18	17	19	19
90	0	0	0	0	0	0	0	0	0	0	0	0	0	0	0	0	0	0	0	0

\*TEST BASED ON ABSOLUTE PHOTOMETRY WHERE LAMP LUMENS=LUMENS TOTAL.

\*CUTOFF CLASSIFICATION AND EFFICIENCY CANNOT BE PROPERLY CALCULATED FOR ABSOLUTE PHOTOMETRY.

VISUAL PHOTOMETRIC TOOL 1.2.35 COPYRIGHT 2012, ACUITY BRANDS LIGHTING  
 REPORTED DATA CALCULATED FROM MANUFACTURER'S DATA FILE, BASED ON IESNA RECOMMENDED METHODS.  
 REPORT GENERATED ON 2/22/2012, USING THE 'OUTDOOR' TEMPLATE.

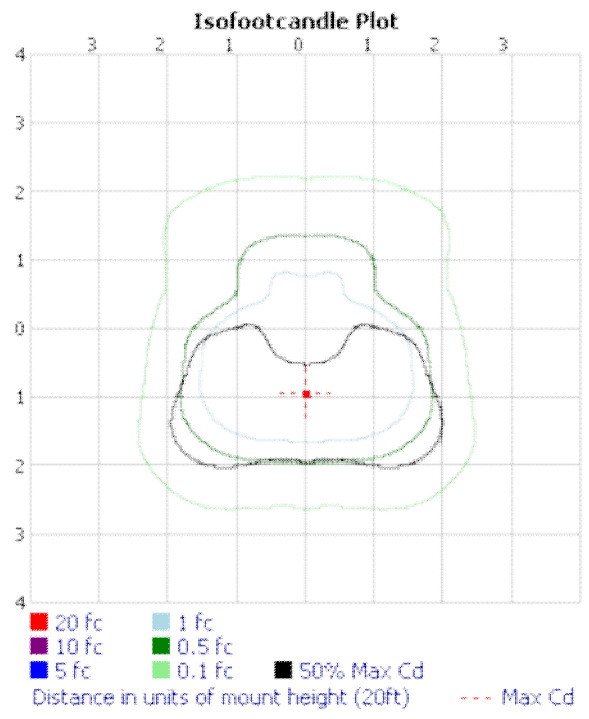
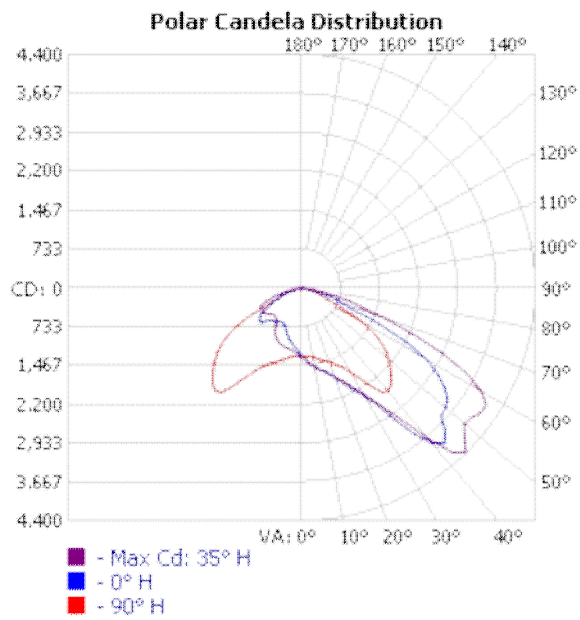
OUTDOOR PHOTOMETRIC REPORT  
 CATALOG: KAD LED 1 63B530/40K SR4



TEST #: LTL20107  
 CATALOG #: KAD LED 1 63B530/40K SR4  
 LUMINAIRE: KAD LED WITH HLM MODULE, 63 LED'S, 530MA DRIVER, 4000K COLOR TEMPERATURE, TYPE 4 LENS  
 LAMP CAT #: HLM MODULE 63B  
 LAMP: ONE 108-WATT HLM LED, DOWNLIGHTPOS.  
 LAMP OUTPUT: 1 LAMP(S), RATED LUMENS/LAMP: 8247.074  
**TEST BASED ON ABSOLUTE PHOTOMETRY \***  
 BALLAST: LEDINTA0530C-280-D0  
 INPUT WATTAGE: 108.4  
 LUMINOUS OPENING: RECTANGLE (L: 10.56", W: 10.2")



MAX CD: 4,370.0 AT HORIZONTAL: 35°, VERTICAL: 45°  
 ROADWAY CLASS: VERY SHORT, TYPE III  
 SEE REPORT NOTES \*\*



OUTDOOR PHOTOMETRIC REPORT  
 CATALOG: KAD LED 1 63B530/40K SR4



ZONAL LUMEN SUMMARY

	ZONE	LUMENS	% LAMP
	0-30	1,220.3	14.8%
	0-40	2,469.0	29.9%
	0-60	6,271.4	76%
	60-90	1,975.7	24%
DLOR	0-90	8,247.1	100%

LUMENS PER ZONE

ZONE	LUMENS	% TOTAL
0-10	125.4	1.5%
10-20	390.7	4.7%
20-30	704.2	8.5%
30-40	1,248.7	15.1%
40-50	1,833.9	22.2%
50-60	1,968.4	23.9%
60-70	1,378.9	16.7%
70-80	514.1	6.2%
80-90	82.7	1.0%

ROADWAY SUMMARY

DISTRIBUTION:	TYPE III, VERY SHORT	
MAX CD, 90 DEG VERT:	7.0	
MAX CD, 80 TO <90 DEG:	429.0	
	LUMENS	% LAMP
DOWNWARD STREET SIDE:	5,997.4	72.7%
DOWNWARD HOUSE SIDE:	2,249.2	27.3%
DOWNWARD TOTAL:	8,246.6	100%
TOTAL LUMENS:	8,246.6	100%

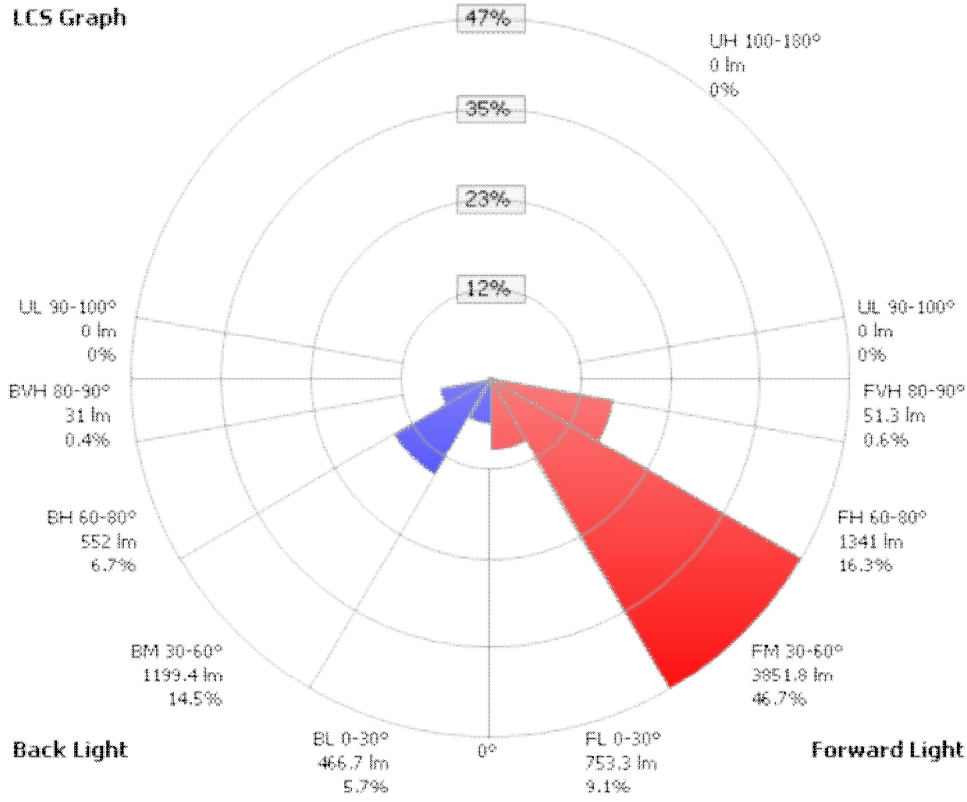
LCS TABLE

BUG RATING	B2 - UX - G2	
FORWARD LIGHT	LUMENS	LUMENS %
LOW(0-30):	753.3	9.1%
MEDIUM(30-60):	3,851.8	46.7%
HIGH(60-80):	1,341.0	16.3%
VERY HIGH(80-90):	51.3	0.6%
BACK LIGHT		
LOW(0-30):	466.7	5.7%
MEDIUM(30-60):	1,199.4	14.5%
HIGH(60-80):	552.0	6.7%
VERY HIGH(80-90):	31.0	0.4%
TRAPPED LIGHT:	0.4	0%

OUTDOOR PHOTOMETRIC REPORT  
CATALOG: KAD LED 1 63B530/40K SR4



LCS Graph



Back Light

Forward Light

Scale = Max LCS %

Trapped Light: 0.4lm, 0%

OUTDOOR PHOTOMETRIC REPORT  
 CATALOG: KAD LED 1 63B530/40K SR4



CANDELA TABLE - TYPE C

	0	10	20	30	40	50	60	70	80	90	100	110	120	130	140	150	160	170	180	
0	1288	1288	1288	1288	1288	1288	1288	1288	1288	1288	1288	1288	1288	1288	1288	1288	1288	1288	1288	1288
5	1409	1431	1428	1419	1408	1390	1369	1345	1324	1292	1280	1258	1240	1222	1206	1194	1186	1182	1158	
10	1525	1549	1543	1531	1512	1495	1476	1437	1389	1334	1300	1254	1212	1175	1144	1120	1105	1096	1071	
15	1628	1652	1654	1658	1647	1621	1584	1552	1487	1403	1346	1269	1201	1139	1088	1047	1018	1002	972	
20	1772	1814	1800	1792	1787	1775	1725	1676	1614	1493	1402	1296	1194	1097	1017	965	929	902	865	
25	2048	2096	2061	2019	1972	1947	1912	1846	1775	1616	1485	1340	1179	1029	930	846	799	777	760	
30	2353	2436	2394	2341	2260	2206	2181	2141	2060	1832	1634	1401	1117	917	815	793	776	759	750	
35	3010	3160	3030	2872	2766	2690	2702	2737	2661	2265	1864	1402	986	798	809	843	842	807	792	
40	3808	3954	3965	3852	3590	3491	3499	3414	3155	2537	1921	1264	798	768	874	952	940	867	825	
45	3821	3841	4041	4331	4299	3939	3670	3451	3099	2379	1643	1011	724	790	943	1025	979	903	877	
50	3534	3495	3648	3910	4052	3834	3557	3328	2921	2141	1300	785	716	852	1012	1035	1042	1034	1028	
55	3281	3313	3582	3954	4190	4021	3658	3162	2643	1843	982	688	768	913	1056	1133	1068	1016	975	
60	2724	2728	3134	3691	4126	3964	3485	2607	1972	1365	771	627	789	963	1149	1028	978	892	804	
65	1604	1517	1938	2661	3088	3177	2496	1342	924	690	567	549	733	1013	998	890	768	650	592	
70	808	807	1042	1425	1726	1682	1129	667	520	391	376	429	619	818	753	646	526	451	414	
75	526	516	687	891	943	855	576	376	288	235	233	282	411	534	435	365	300	268	233	
80	236	229	334	419	415	376	264	165	120	107	111	149	235	241	192	157	132	114	89	
85	56	49	79	104	108	88	64	43	33	26	34	47	69	62	48	39	34	26	15	
90	1	2	4	6	7	7	7	7	7	7	7	7	7	6	6	5	4	2	0	

\*TEST BASED ON ABSOLUTE PHOTOMETRY WHERE LAMP LUMENS=LUMENS TOTAL.  
 \*CUTOFF CLASSIFICATION AND EFFICIENCY CANNOT BE PROPERLY CALCULATED FOR ABSOLUTE PHOTOMETRY.

\*\*FILE DOES NOT INCLUDE SUFFICIENT VERTICAL DATA TO PROPERLY CALCULATE BUG AND LCS UPLIGHT.  
 \*\*FILE DOES NOT INCLUDE UPPER HEMISPHERE DATA(90-180) AND HAS CD > 0 AT 90° VERTICAL.

VISUAL PHOTOMETRIC TOOL 1.2.35 COPYRIGHT 2012, ACUITY BRANDS LIGHTING  
 REPORTED DATA CALCULATED FROM MANUFACTURER'S DATA FILE, BASED ON IESNA RECOMMENDED METHODS.  
 REPORT GENERATED ON 2/22/2012, USING THE 'OUTDOOR' TEMPLATE.

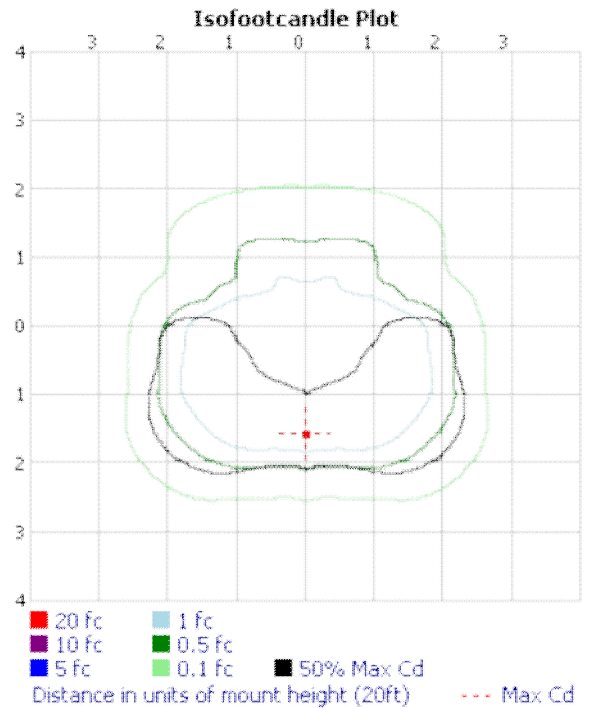
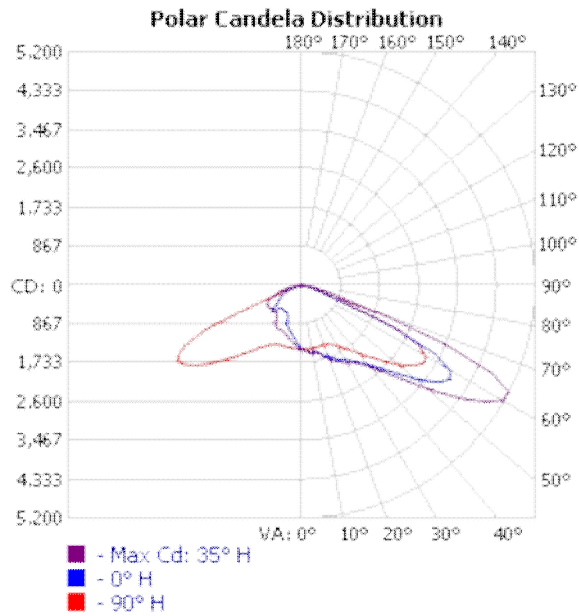
OUTDOOR PHOTOMETRIC REPORT  
 CATALOG: KAD LED 1 63B530/40K SR3



TEST #: LTL20007  
 CATALOG #: KAD LED 1 63B530/40K SR3  
 LUMINAIRE: KAD LED WITH HLM MODULE, 63 LED'S, 530MA DRIVER, 4000K COLOR TEMPERATURE, TYPE 3 LENS  
 LAMP: ONE 110-WATT LED, DOWNLIGHTPOS.  
 LAMP OUTPUT: 1 LAMP(S), RATED LUMENS/LAMP: 8596.128  
 TEST BASED ON ABSOLUTE PHOTOMETRY \*  
 BALLAST: LEDINTA530C280DO  
 INPUT WATTAGE: 110.9  
 LUMINOUS OPENING: RECTANGLE (L: 10.2", W: 10.56")



MAX CD: 5,187.0 AT HORIZONTAL: 35°, VERTICAL: 62.5°  
 ROADWAY CLASS: SHORT, TYPE III  
 SEE REPORT NOTES \*\*





OUTDOOR PHOTOMETRIC REPORT  
 CATALOG: KAD LED 1 63B530/40K SR3



ZONAL LUMEN SUMMARY

	ZONE	LUMENS	% LAMP
	0-30	1,190.0	13.8%
	0-40	2,185.6	25.4%
	0-60	6,043.8	70.3%
	60-90	2,552.3	29.7%
DLOR	0-90	8,596.1	100%

LUMENS PER ZONE

ZONE	LUMENS	% TOTAL
0-10	135.1	1.6%
10-20	393.4	4.6%
20-30	661.5	7.7%
30-40	995.6	11.6%
40-50	1,544.4	18.0%
50-60	2,313.9	26.9%
60-70	2,005.7	23.3%
70-80	472.5	5.5%
80-90	74.1	0.9%

ROADWAY SUMMARY

DISTRIBUTION:	TYPE III, SHORT	
MAX CD, 90 DEG VERT:		7.0
MAX CD, 80 TO <90 DEG:		368.0
	LUMENS	% LAMP
DOWNWARD STREET SIDE:	6,220.1	72.4%
DOWNWARD HOUSE SIDE:	2,375.6	27.6%
DOWNWARD TOTAL:	8,595.6	100%
TOTAL LUMENS:	8,595.6	100%

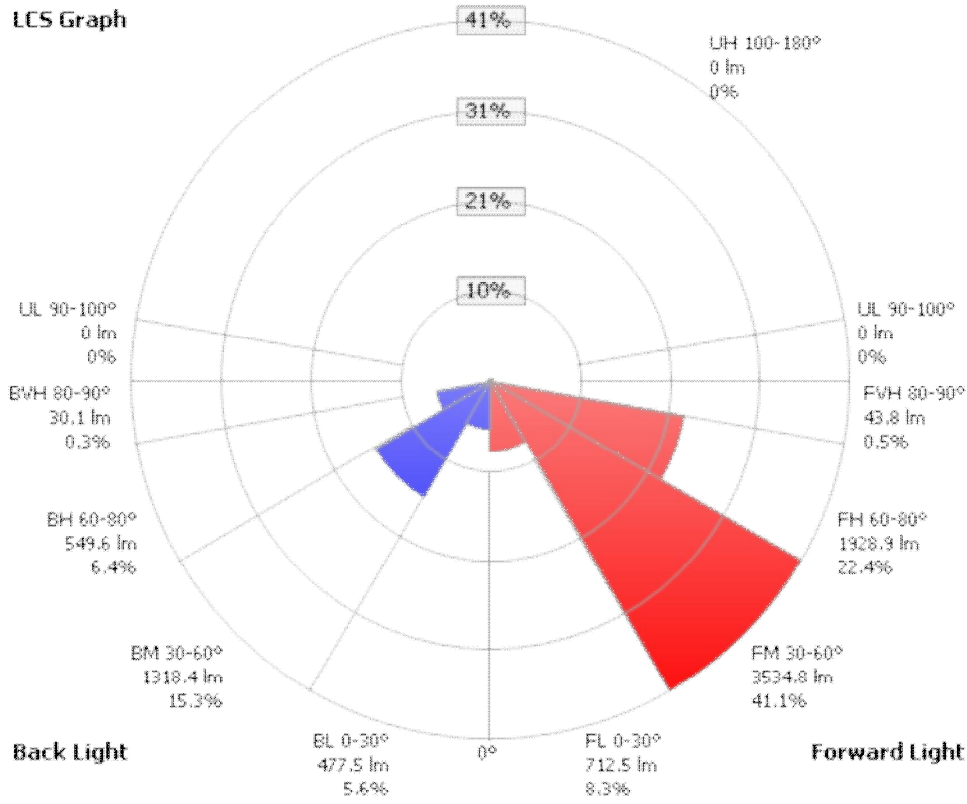
LCS TABLE

BUG RATING	B2 - UX - G2	
FORWARD LIGHT	LUMENS	LUMENS %
LOW(0-30):	712.5	8.3%
MEDIUM(30-60):	3,534.8	41.1%
HIGH(60-80):	1,928.9	22.4%
VERY HIGH(80-90):	43.8	0.5%
BACK LIGHT		
LOW(0-30):	477.5	5.6%
MEDIUM(30-60):	1,318.4	15.3%
HIGH(60-80):	549.6	6.4%
VERY HIGH(80-90):	30.1	0.3%
TRAPPED LIGHT:	0.5	0%

OUTDOOR PHOTOMETRIC REPORT  
 CATALOG: KAD LED 1 63B530/40K SR3



LCS Graph



Back Light

Forward Light

Scale = Max LCS %

↻ Trapped Light: 0.5lm, 0%

OUTDOOR PHOTOMETRIC REPORT  
 CATALOG: KAD LED 1 63B530/40K SR3



CANDELA TABLE - TYPE C

	0	10	20	30	40	50	60	70	80	90	100	110	120	130	140	150	160	170	180	
0	1436	1436	1436	1436	1436	1436	1436	1436	1436	1436	1436	1436	1436	1436	1436	1436	1436	1436	1436	1436
5	1497	1515	1511	1510	1499	1492	1481	1468	1455	1436	1419	1398	1376	1357	1342	1332	1322	1316	1285	
10	1503	1513	1521	1540	1557	1561	1537	1509	1470	1430	1393	1351	1312	1273	1238	1214	1194	1182	1152	
15	1600	1624	1627	1620	1589	1568	1584	1549	1490	1422	1364	1303	1237	1178	1137	1109	1085	1072	1046	
20	1691	1727	1744	1763	1756	1691	1615	1602	1524	1426	1351	1262	1173	1106	1062	1038	1016	994	957	
25	1835	1877	1895	1894	1883	1884	1767	1663	1582	1463	1376	1261	1149	1075	1009	911	833	791	751	
30	1931	1986	1999	2007	2017	2014	1978	1796	1698	1564	1481	1340	1182	1021	841	764	733	711	695	
35	2097	2177	2183	2150	2137	2182	2150	2011	1869	1750	1665	1473	1204	869	778	774	759	713	683	
40	2330	2438	2469	2433	2375	2370	2414	2290	2127	2009	1868	1591	1067	812	829	884	844	744	681	
45	2701	2858	2923	2914	2813	2737	2783	2720	2496	2338	2017	1576	947	837	961	1014	942	802	727	
50	3240	3419	3541	3615	3500	3346	3343	3327	3024	2760	2095	1323	886	893	1085	1136	1113	984	874	
55	3774	3926	4186	4487	4363	4156	4099	3951	3469	3117	2008	1098	874	958	1165	1181	893	732	660	
60	3817	3857	4366	5127	5073	4885	4855	4354	3612	3187	1785	843	837	987	1027	844	701	605	558	
65	2229	2047	2888	4380	4807	4842	4757	3789	2798	2371	1281	596	696	840	752	647	537	487	458	
70	571	580	796	1424	2171	2498	2117	1039	617	528	465	474	574	667	573	474	397	350	313	
75	293	301	394	590	778	831	613	386	285	252	274	334	434	466	348	292	241	215	185	
80	146	148	186	259	328	368	272	178	135	113	133	180	259	218	165	135	116	102	82	
85	42	39	54	73	85	97	77	62	42	32	37	51	67	53	43	37	32	26	14	
90	1	2	3	5	6	7	7	7	7	7	6	6	6	5	6	4	3	2	0	

\*TEST BASED ON ABSOLUTE PHOTOMETRY WHERE LAMP LUMENS=LUMENS TOTAL.

\*CUTOFF CLASSIFICATION AND EFFICIENCY CANNOT BE PROPERLY CALCULATED FOR ABSOLUTE PHOTOMETRY.

\*\*FILE DOES NOT INCLUDE SUFFICIENT VERTICAL DATA TO PROPERLY CALCULATE BUG AND LCS UPLIGHT.

\*\*FILE DOES NOT INCLUDE UPPER HEMISPHERE DATA(90-180) AND HAS CD > 0 AT 90° VERTICAL.

VISUAL PHOTOMETRIC TOOL 1.2.35 COPYRIGHT 2012, ACUITY BRANDS LIGHTING

REPORTED DATA CALCULATED FROM MANUFACTURER'S DATA FILE, BASED ON IESNA RECOMMENDED METHODS.

REPORT GENERATED ON 2/22/2012, USING THE 'OUTDOOR' TEMPLATE.

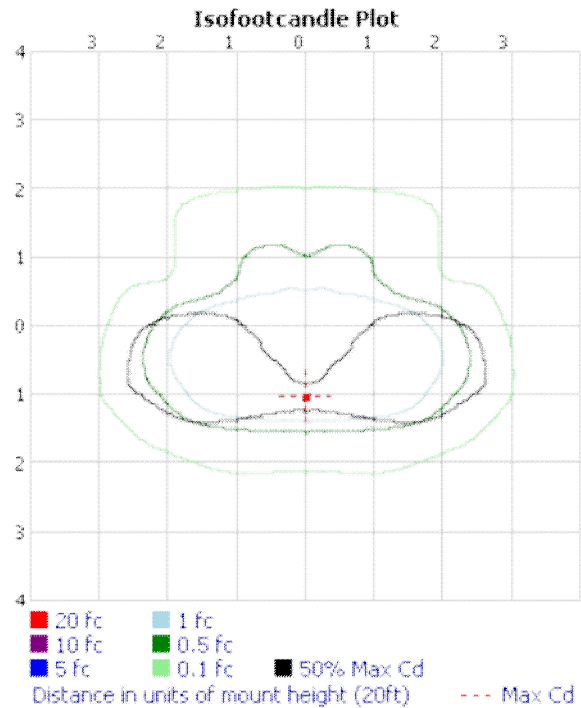
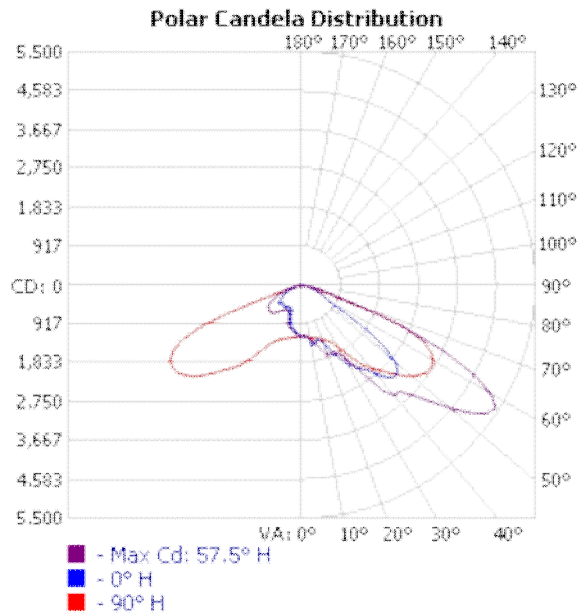
OUTDOOR PHOTOMETRIC REPORT  
 CATALOG: KAD LED 1 63B530/40K SR2



TEST #: LTL20438B  
 CATALOG #: KAD LED 1 63B530/40K SR2  
 LUMINAIRE: KAD LED WITH HLM MODULE, 63 LED'S, 530MA DRIVER, 4000K COLOR TEMPERATURE, TYPE 2 LENS  
 LAMP CAT #: NICHIA 219AT-H3 4000K  
 LAMP: ONE 111.3-WATT LED, AIMED DOWN POS.  
 LAMP OUTPUT: 1 LAMP(S), RATED LUMENS/LAMP: 8352.715  
**TEST BASED ON ABSOLUTE PHOTOMETRY \***  
 BALLAST: LED INTA 0530C 280 DO  
 INPUT WATTAGE: 111.3  
 LUMINOUS OPENING: RECTANGLE (L: 10.56", W: 10.56")



MAX CD: 5,414.0 AT HORIZONTAL: 57.5°, VERTICAL: 57.5°  
 ROADWAY CLASS: SHORT, TYPE II



OUTDOOR PHOTOMETRIC REPORT  
 CATALOG: KAD LED 1 63B530/40K SR2



ZONAL LUMEN SUMMARY

	ZONE	LUMENS	% LAMP
	0-30	1,121.9	13.4%
	0-40	2,282.2	27.3%
	0-60	6,249.0	74.8%
	60-90	2,103.7	25.2%
DLOR	0-90	8,352.7	100%
ULOR	90-180	0	0%
LOR	0-180	8,352.7	100%
ULR	90-180	0	0%

LUMENS PER ZONE

ZONE	LUMENS	% TOTAL	ZONE	LUMENS	% TOTAL
0-10	117.7	1.4%	90-100	0	0%
10-20	364.0	4.4%	100-110	0	0%
20-30	640.2	7.7%	110-120	0	0%
30-40	1,160.4	13.9%	120-130	0	0%
40-50	1,803.0	21.6%	130-140	0	0%
50-60	2,163.7	25.9%	140-150	0	0%
60-70	1,529.4	18.3%	150-160	0	0%
70-80	488.9	5.9%	160-170	0	0%
80-90	85.4	1.0%	170-180	0	0%

ROADWAY SUMMARY

DISTRIBUTION:	TYPE II, SHORT	
MAX CD, 90 DEG VERT:	0	
MAX CD, 80 TO <90 DEG:	443.0	
	LUMENS	% LAMP
DOWNWARD STREET SIDE:	5,939.6	71.1%
DOWNWARD HOUSE SIDE:	2,412.5	28.9%
DOWNWARD TOTAL:	8,352.1	100%
UPWARD STREET SIDE:	0	0%
UPWARD HOUSE SIDE:	0	0%
UPWARD TOTAL:	0	0%
TOTAL LUMENS:	8,352.1	100%

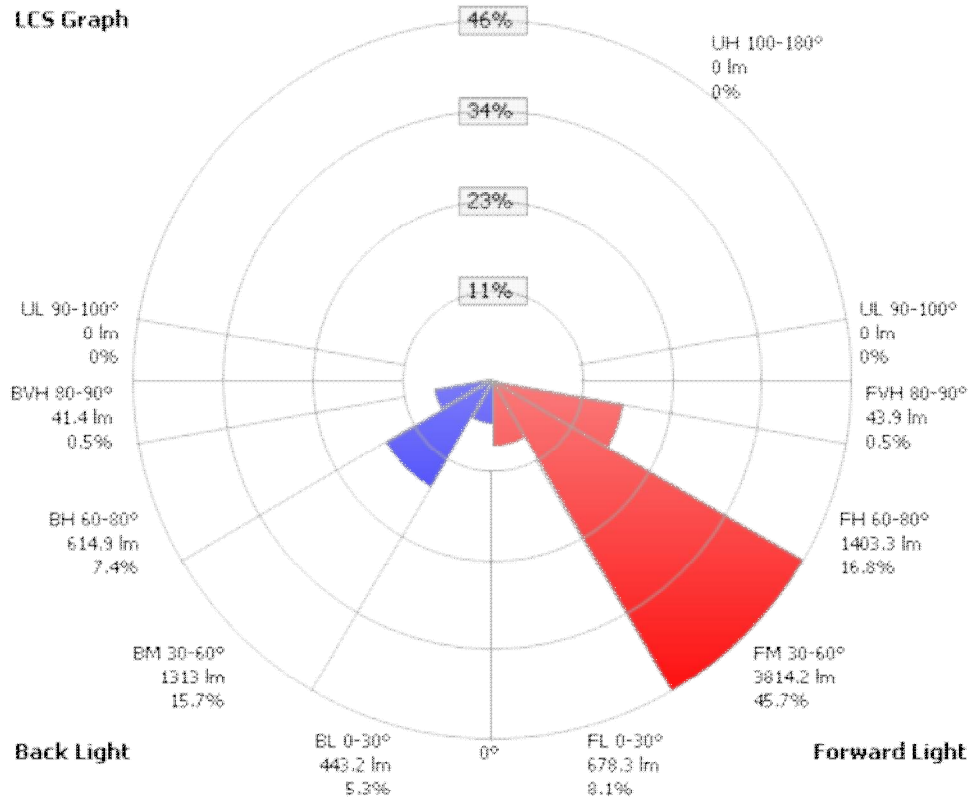
LCS TABLE

BUG RATING	B2 - U0 - G2	
FORWARD LIGHT	LUMENS	LUMENS %
LOW(0-30):	678.3	8.1%
MEDIUM(30-60):	3,814.2	45.7%
HIGH(60-80):	1,403.3	16.8%
VERY HIGH(80-90):	43.9	0.5%
BACK LIGHT		
LOW(0-30):	443.2	5.3%
MEDIUM(30-60):	1,313.0	15.7%
HIGH(60-80):	614.9	7.4%
VERY HIGH(80-90):	41.4	0.5%
UPLIGHT		
LOW(90-100):	0	0%
HIGH(100-180):	0	0%
TRAPPED LIGHT:	0.6	0%

OUTDOOR PHOTOMETRIC REPORT  
CATALOG: KAD LED 1 63B530/40K SR2



LCS Graph



Back Light

Forward Light

Scale = Max LCS %

↻ Trapped Light: 0.6lm, 0%

OUTDOOR PHOTOMETRIC REPORT  
 CATALOG: KAD LED 1 63B530/40K SR2



CANDELA TABLE - TYPE C

	0	10	20	30	40	50	60	70	80	90	100	110	120	130	140	150	160	170	180	
0	1209	1209	1209	1209	1209	1209	1209	1209	1209	1209	1209	1209	1209	1209	1209	1209	1209	1209	1209	1209
5	1232	1243	1241	1236	1233	1230	1228	1230	1229	1229	1226	1220	1210	1200	1190	1183	1177	1170	1165	
10	1447	1460	1459	1427	1386	1344	1310	1287	1272	1266	1257	1237	1212	1172	1144	1116	1097	1085	1070	
15	1341	1353	1402	1475	1582	1602	1480	1385	1336	1311	1292	1251	1197	1150	1098	1050	1012	987	963	
20	1437	1478	1492	1500	1532	1640	1743	1548	1410	1361	1327	1259	1191	1106	1020	922	838	777	727	
25	1791	1849	1836	1775	1703	1676	1811	1802	1543	1457	1408	1315	1189	1032	839	698	635	606	591	
30	2154	2211	2256	2245	2143	1990	1964	2148	1825	1687	1595	1442	1183	868	695	648	627	603	591	
35	2401	2472	2586	2762	2892	2782	2592	2676	2424	2159	1959	1627	1098	777	697	691	680	641	618	
40	2736	2790	2859	3015	3288	3447	3372	3304	3031	2559	2213	1679	1007	765	755	816	809	722	655	
45	3076	3127	3232	3427	3676	3774	3618	3543	3518	2936	2418	1496	934	793	897	941	863	703	601	
50	2895	2920	3158	3620	4364	4640	4422	4246	4166	3352	2478	1258	869	849	973	957	830	697	657	
55	1910	1915	2369	3073	4301	5175	5214	4841	4558	3599	2344	974	836	851	985	931	842	727	669	
60	761	794	1041	1636	3074	4632	5195	5096	4665	3577	2030	720	737	853	926	859	689	574	528	
65	512	538	666	882	1299	2792	3808	4552	4328	3153	1656	515	576	795	838	678	534	471	428	
70	357	374	470	610	748	1062	1717	2524	2250	1548	955	372	536	772	699	501	394	326	268	
75	213	217	296	395	469	591	641	726	579	378	274	290	547	596	466	328	262	215	167	
80	106	115	149	193	232	275	306	319	271	168	127	194	429	334	254	175	137	109	77	
85	27	31	42	57	70	75	74	95	76	43	33	41	142	97	72	51	33	29	17	
90	0	0	0	0	0	0	0	0	0	0	0	0	0	0	0	0	0	0	0	0
95	0	0	0	0	0	0	0	0	0	0	0	0	0	0	0	0	0	0	0	0
100	0	0	0	0	0	0	0	0	0	0	0	0	0	0	0	0	0	0	0	0
105	0	0	0	0	0	0	0	0	0	0	0	0	0	0	0	0	0	0	0	0
110	0	0	0	0	0	0	0	0	0	0	0	0	0	0	0	0	0	0	0	0
115	0	0	0	0	0	0	0	0	0	0	0	0	0	0	0	0	0	0	0	0
120	0	0	0	0	0	0	0	0	0	0	0	0	0	0	0	0	0	0	0	0
125	0	0	0	0	0	0	0	0	0	0	0	0	0	0	0	0	0	0	0	0
130	0	0	0	0	0	0	0	0	0	0	0	0	0	0	0	0	0	0	0	0
135	0	0	0	0	0	0	0	0	0	0	0	0	0	0	0	0	0	0	0	0
140	0	0	0	0	0	0	0	0	0	0	0	0	0	0	0	0	0	0	0	0
145	0	0	0	0	0	0	0	0	0	0	0	0	0	0	0	0	0	0	0	0
150	0	0	0	0	0	0	0	0	0	0	0	0	0	0	0	0	0	0	0	0
155	0	0	0	0	0	0	0	0	0	0	0	0	0	0	0	0	0	0	0	0
160	0	0	0	0	0	0	0	0	0	0	0	0	0	0	0	0	0	0	0	0
165	0	0	0	0	0	0	0	0	0	0	0	0	0	0	0	0	0	0	0	0
170	0	0	0	0	0	0	0	0	0	0	0	0	0	0	0	0	0	0	0	0
175	0	0	0	0	0	0	0	0	0	0	0	0	0	0	0	0	0	0	0	0
180	0	0	0	0	0	0	0	0	0	0	0	0	0	0	0	0	0	0	0	0

\*TEST BASED ON ABSOLUTE PHOTOMETRY WHERE LAMP LUMENS=LUMENS TOTAL.  
 \*CUTOFF CLASSIFICATION AND EFFICIENCY CANNOT BE PROPERLY CALCULATED FOR ABSOLUTE PHOTOMETRY.

VISUAL PHOTOMETRIC TOOL 1.2.35 COPYRIGHT 2012, ACUITY BRANDS LIGHTING  
 REPORTED DATA CALCULATED FROM MANUFACTURER'S DATA FILE, BASED ON IESNA RECOMMENDED METHODS.  
 REPORT GENERATED ON 2/22/2012, USING THE 'OUTDOOR' TEMPLATE.

## FEATURES & SPECIFICATIONS

**INTENDED USE** — Ideal for parking areas, street lighting, walkways and car lots.

**CONSTRUCTION** — Rugged, die-cast, soft corner aluminum housing with 0.12" nominal wall thickness. Die-cast door frame has impact-resistant, tempered glass lens that is fully gasketed with one-piece tubular silicone.

Finish: Exterior parts are protected by a zinc-infused Super Durable TGIC thermoset powder coat finish that provides superior resistance to corrosion and weathering. A tightly controlled multi-stage process ensures a minimum 3 mm thickness for a finish that can withstand extreme climate changes without cracking or peeling. Standard Super Durable colors include dark bronze, black, natural aluminum and white. Available in textured and non-textured finishes.

**OPTICS** — Precision acrylic refractive optics for optimum light distribution through the flat glass lens. Available with Type 2, Type 3, Type 4 and Type 5.

**ELECTRICAL** — High-efficiency nominal 4000K, 65 CRI LEDs mounted to a metal-core circuit board and aluminum heat sink, ensuring optimal thermal management and long life. Designed to provide more than 60,000 hours of performance (L85) at 25°C (77°F) ambient temperatures. Standard and dimming drivers are available in 120-277V and 347-480V; 50/60 Hz. Drivers have power factor >90% and THD <20%. Expected driver life is over 60,000 hours, matching the light engine life. Integral surge protection tested in accordance with IEEE/ANSI C62.41.2 to Category C Low.

**INSTALLATION** — Extruded aluminum arm for pole or wall mounting.

**LISTINGS** — CSA certified to U.S. and Canadian standards. IP65 rated.

**WARRANTY** — Five-year limited warranty.

*Note: Specifications subject to change without notice.*

Catalog Number
Notes
Type

**CONTOUR**  
S E R I E S

Area Luminaire

**KAD LED**



**lighting facts**  
LED Product Partner

DESIGNLIGHTS  
CONSORTIUM



### Specifications

Width: 17-1/2 (44.5)

Length: 17-1/2 (44.5)

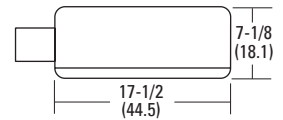
Depth: 7-1/8 (18.1)

EPA: 1.2 ft<sup>2</sup>

\*Weight: 36.2 lbs. (16.4 kg)

\*Weight as configured in example below.

All dimensions are inches (centimeters) unless otherwise specified.



### ORDERING INFORMATION

Lead times will vary depending on options selected. Consult with your sales representative.

**Example: KAD LED 1 63B350/40K SR5 MVOLT SPD04 DDBXD**

KAD LED	1									
Series	Number of light engines	Performance package <sup>1</sup>	Distribution	Voltage	Mounting	Options	Finish <sup>10</sup>			
KAD LED	1	49B350/40K 63B350/40K 63B530/40K <u>Optional:</u> 49B350/30K 63B350/30K 63B530/30K 49B350/50K 63B350/50K 63B530/50K	SR2 Type II SR3 Type III SR4 Type IV SR5 Type V	MVOLT <sup>2</sup> 120 208 240 277 347 480	<u>Type</u> SPD___ Square pole RPD___ Round pole WBD___ Wall bracket WWD___ Wood pole or wall  <u>Shipped separately</u> <sup>3,4</sup> KMA Mast arm external fitter	<u>Length</u> 04 4" arm 06 6" arm 09 9" arm 12 12" arm  <u>Shipped separately</u> <sup>3</sup> DSS124 F 1.5 TJJE U REN480 NM1 J1 SC U VG WG	<u>Shipped installed in fixture</u> PER NEMA twist-lock receptacle only (no photocontrol) SF Single fuse (120, 277, 347V) <sup>5</sup> DF Double fuse (208, 240, 480V) <sup>5</sup> DMG Dimming option <sup>6</sup> DFL Diffusing lens <u>Shipped separately</u> <sup>3</sup> DSS124 F 1.5 TJJE U Photocell solid-state twist-lock (120, 208, 240, 277) <sup>7,8</sup> REN480 NM1 J1 Photocell-ROAM <sup>®</sup> node (480) <sup>7,8</sup> SC U Shorting cap for PER option <sup>7</sup> VG Vandal guard <sup>9</sup> WG Wire guard <sup>9</sup>	DDBXD Dark bronze DBLXD Black DNAXD Natural aluminum DWHXD White DDBTXD Dark bronze textured DBLBXD Black textured DNATXD Natural aluminum textured DWHGXD White textured		

Tenon O.D.	One@90°	Two@180°	Two@90° <sup>11</sup>	Three@120°	Three@90° <sup>11</sup>	Four@90° <sup>11</sup>
2-3/8"	T20-190	T20-280	T20-290	T20-320 <sup>11</sup>	T20-390	T20-490
2-7/8"	T25-190	T25-280	T25-290	T25-320	T25-390	T25-490
4"	T35-190	T35-280	T35-290	T35-320	T35-390	T35-490

### Notes

- 1 Configured with 4000K (/40K) provides the shortest lead times. 3000K (/30K) and 5000K (/50K) are also available. Please consult factory for additional information.
- 2 Multi-volt driver capable of operating on any line voltage from 120V-277V.
- 3 May be ordered as an accessory.
- 4 Must specify finish when ordered as an accessory.
- 5 Must specify voltage. Not available with MVOLT.
- 6 Not available with 347 or 480V.
- 7 Must order PER option. Must be ordered as separate line item.
- 8 Order from Acuity Brands Controls. Not available for 347V.
- 9 Prefix with KAD when ordered as an accessory (e.g., KADVG).
- 10 Must be specified.
- 11 Must use 9" or longer round pole arm.

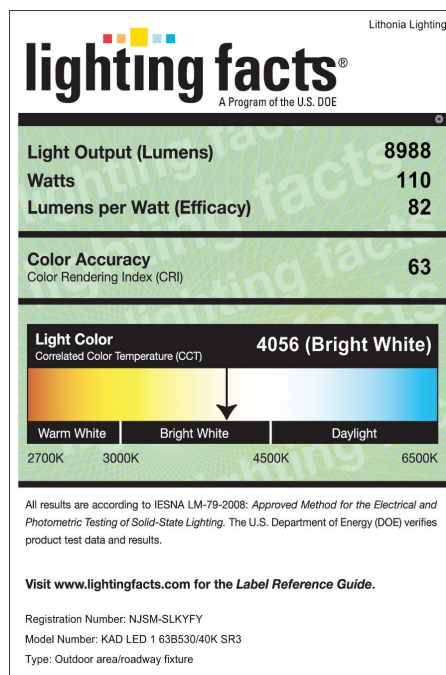
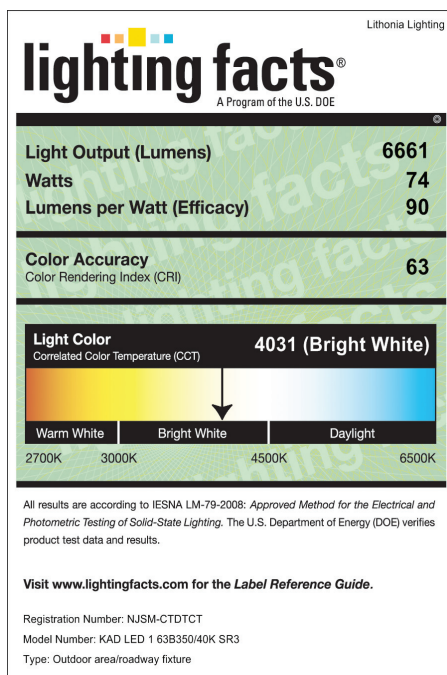
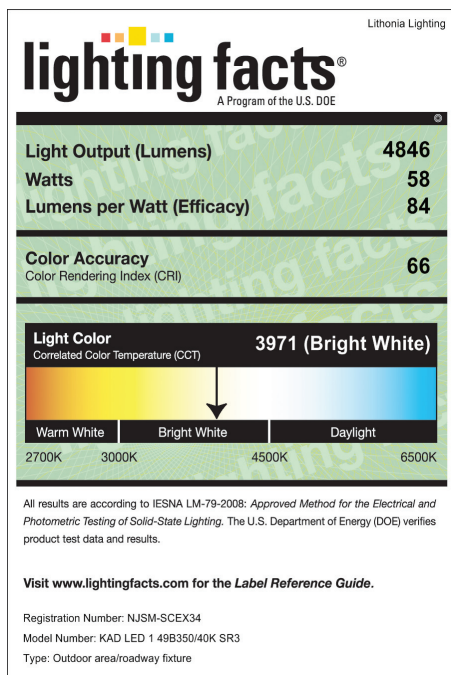


## PERFORMANCE DATA

Number of light engines	Total number of LEDs	Current	Performance package	Distribution	Lumens <sup>1</sup>	B	U	G	Nominal system watts <sup>1</sup>	LPW <sup>1</sup>
1	49	350	49B350/40K	SR3	4,846	1	1	1	58	84
				SR4	4,762	1	1	1	59	80
				SR5	5,013	3	1	1	59	85
	63	350	63B350/40K	SR3	6,661	1	1	1	74	90
				SR4	6,495	1	1	1	75	87
				SR5	6,720	3	1	1	74	91
	63	530	63B530/40K	SR3	8,988	2	1	2	110	82
				SR4	8,658	2	1	2	110	79
				SR5	8,912	3	1	1	108	83

### Note

<sup>1</sup> Tested to IESNA LM79-08 standards.



### Note

- 1 Additional Lighting Facts available; please consult factory.
- 2 Photometric data can be accessed from the Lithonia Lighting website ([www.lithonia.com](http://www.lithonia.com))