

LEGEND

- Proposed Firelane
- Proposed Sidewalk
- Existing Fire Hydrant
- Existing Sanitary Sewer Manhole
- Existing Water Valve
- Proposed Water Meter
- Existing Power Pole
- Existing Sanitary Sewer Line
- Existing Water Line
- Existing Overhead Power Line
- Existing Gas Line
- Existing Telephone Line

Note:
All site lighting shall be located on the building and be fully shielded from adjacent properties

NOTE:
HANDICAP PARKING IS PROVIDED IN ACCORDANCE WITH ADA STANDARDS
LIGHTING FOR THE SITE SHALL MEET CITY STANDARDS.
THERE ARE NO TREES ON THIS SITE.

SYNOPSIS

Zoning	C (S 81)
Proposed Use	Light Automotive Repair
Lot Area	0.702 Ac. (30,560 s.f.)
Building Area:	4,968 s.f.
Lot Coverage:	16.25%
Floor Area Ratio:	0.16:1
Impervious Area:	21,737 s.f.
Building Height:	24' (To The Ridge), 1 Story

Parking Required:	(18 Spaces)
(2 per service bay)	
Total Parking Provided:	(25 Spaces)
Handicap Parking Provided:	(2 Spaces)
Legal Description:	Lot 2, Block 1, Rockwall Market Center South Addition

Dumpster Enclosure Screening Walls Shall Be Brick Masonry, Stone Masonry, Or Other Architectural Masonry Finish, Including A Metal Gate, Primed And Painted to Match Building and be Constructed In Accordance with the City of Rockwall Design Standards.

WATER METER CHART

No.	PROPOSED METER	SIZE
1	DOMESTIC METER	1"
2	IRRIGATION METER	1"

SANITARY SEWER SERVICE CHART

No.	PROPOSED S.S.	SIZE
1	PVC LATERAL	6"

$\Delta = 08^{\circ}08'06''$
 $R = 644.98'$
 $L = 91.58'$
 $T = 45.86'$
 $CHB = S75^{\circ}28'45''W$
 $\sim 91.50'$

BENCHMARK:
BM#1
TOP NORTHEAST CORNER OF CONCRETE WYE INLET LOCATED IN SOUTHWEST CORNER OF HOME DEPOT.
ELEV. = 540.69

SURVEYOR
AJ Bedford Group, Inc.
301 N. Alamo Road
Rockwall, Texas 75087
Phone (972) 722-0225
Fax (972) 722-0361
Contact: Joy Bedford

DEVELOPER
Christian Brothers Automotive
15995 N. Barker Landing
Suite 145
Houston, Texas 77079
281-870-8900 ext.105
Contact: Curtis Cain

ENGINEER
Cross Engineering Consultants, Inc.
106 W. Louisiana Street
McKinney, Texas 75069
Phone (972) 562-4409
Fax (972) 562-4471
Contact: Jonathan D. Hake, P.E.

STOP!
CALL BEFORE YOU DIG



(@ least 72 hours prior to digging)

NOTE: THIS IS NOT A CONSTRUCTION DOCUMENT.
THIS DOCUMENT IS FOR PLANNING PURPOSES ONLY.

Issue Dates:	Revisions:	Date:
1	1	
2	2	
3	3	
4	4	
5	5	
6	6	

CROSS ENGINEERING CONSULTANTS
106 W. Louisiana Street
972.562.4409

McKinney, Texas 75069
Texas P.E. Firm No. P-5935

Drawn By: C.E.C.I. Checked By: J.D.C. Scale: 1" = 20'



SITE PLAN
CHRISTIAN BROTHERS - ROCKWALL
Rockwall Market Center South Addition
CITY OF ROCKWALL, TEXAS

Sheet No.
SP
Project No.
11014

Revisions

04/01/11 - Revision 1 - Per City Site Plan Comments
04/12/11 - Revision 2 - Per City Site Plan Comments

Project No. 10-35

Drawn By: DK

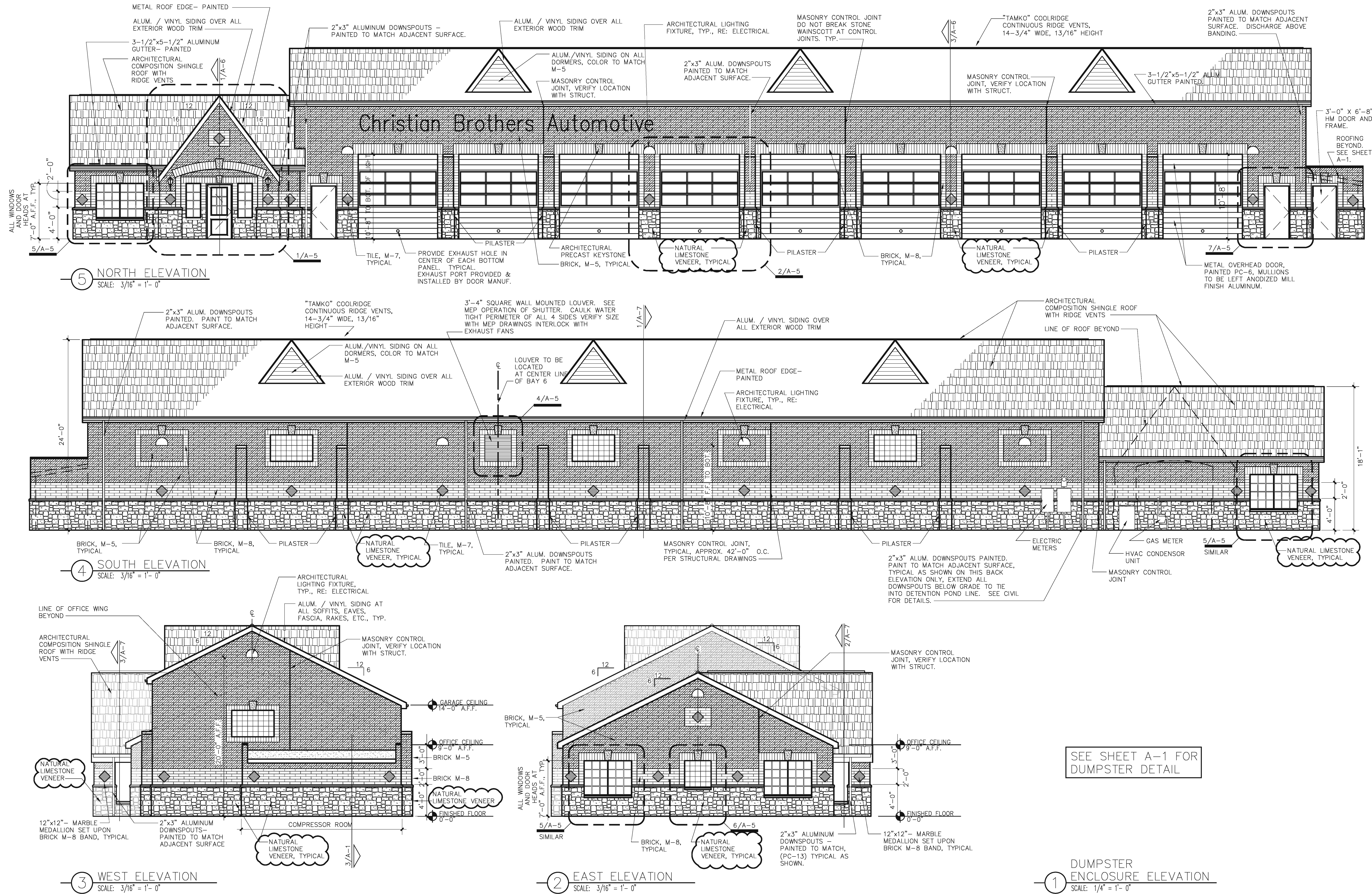
Date: 02/25/11

Sheet Title:

EXTERIOR ELEVATIONS

Drawing No.

A-4



SEE SHEET A-1 FOR DUMPSTER DETAIL

TYPICAL NOTES FOR ALL ELEVATIONS

- 2'-0" BAND, JAMBS, HEADS OF DOORS AND WINDOWS, AND ACCENT IN GABLES AT ENTRY AND SIDE ELEVATIONS TO BE BRICK COLOR M-8.
- ALL ROOFS TO BE ASPHALT COMPOSITION SHINGLES WITH CONTINUOUS RIDGE VENTS INDICATED ON DRAWINGS. COLOR M-6.
- ALL WOOD TRIM AT SOFFITS, EAVES, FASCIA, RAKES, ETC. TO BE ALUMINUM OR VINYL SIDING OVER EXPOSED WOOD.
- ALL EXTERIOR LIGHTS ARE TO BE ON PHOTO CELL. TYPICAL OF ALL ELEVATIONS.
- ALL MASONRY SURFACES ARE TO BE SPRAYED WITH WATER-PROOFING SEALER.
- ALL DOWN SPOUTS ARE TO BE PAINTED TO MATCH THE COLOR OF THE WALL MATERIAL BEHIND IT.
- CONTROL JOINTS DO NOT EXTEND THROUGH BOND BEAMS, PROVIDE SURFACE CUT ONLY AT BEAMS.

ALL SURFACES ARE CONSTRUCTED OF QUIK BRICK, 4"x16" CMU UNITS AS MANUFACTURED BY QUIK BRICK OR SPEC BRICK. USE WHITE MORTAR WITH WHITE SAND ADDITIVE AT ALL EXTERIOR LOCATIONS OF THE 4"x16" CMU UNITS AND LIMESTONE AS INDICATED. LIMESTONE VENEER AS SUPPLIED BY SALADO QUARRY 284-793-3356. BRICK 100% OF EXTERIOR IS FIRE RESISTANT CONST. MAX. BUILDING HEIGHT IS 24'-0".

Revisions

04/01/11 - Revision 1 - Per City Site Plan Comments
04/12/11 - Revision 2 - Per City Site Plan Comments

Project No. 10-35
 Drawn By: DK
 Date: 02/25/11

Sheet Title:
COLOR EXTERIOR ELEVATIONS

Drawing No.

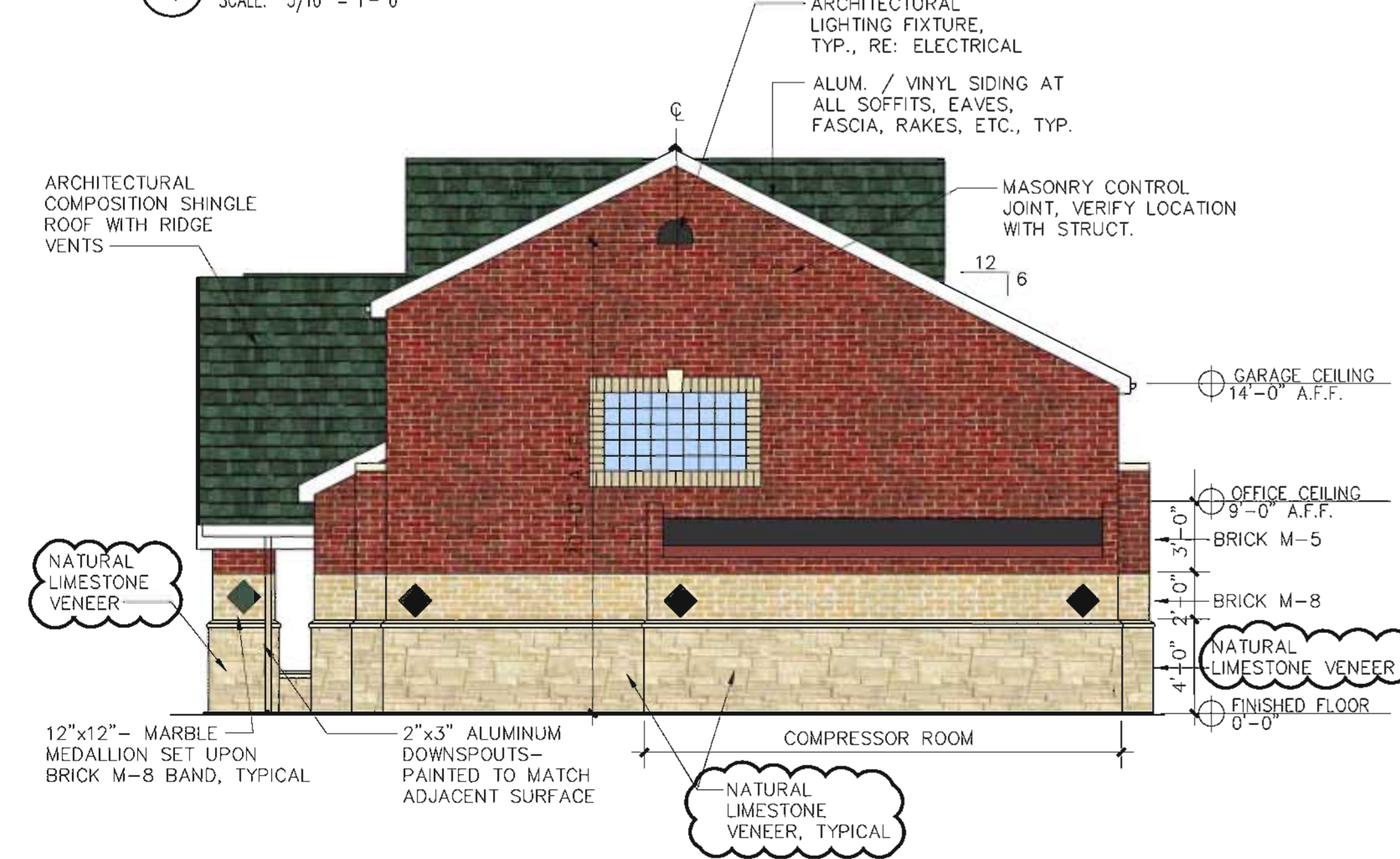
A-4.1



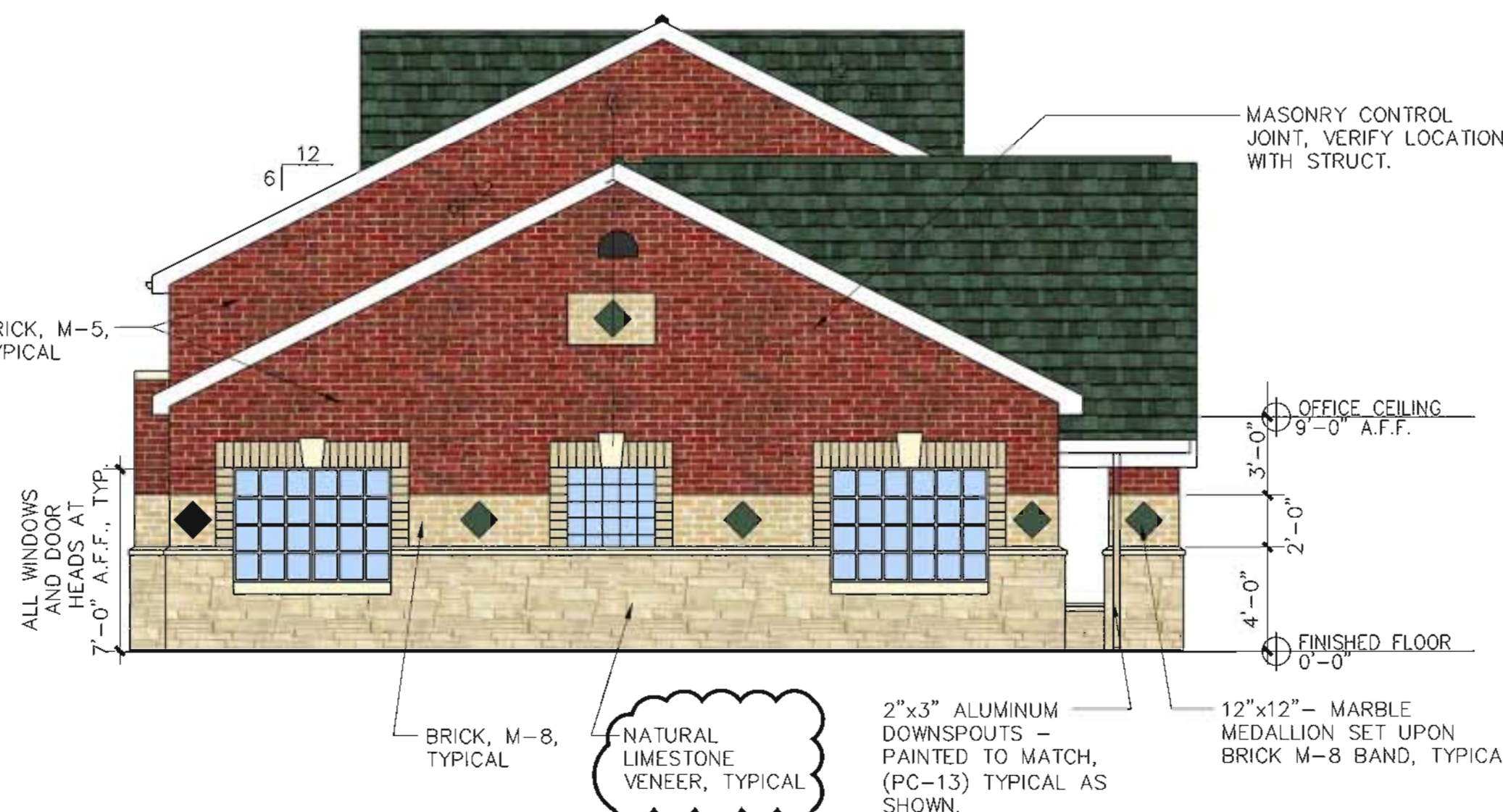
5 NORTH ELEVATION
 SCALE: 3/16" = 1'- 0"



4 SOUTH ELEVATION
 SCALE: 3/16" = 1'- 0"



3 WEST ELEVATION
 SCALE: 3/16" = 1'- 0"



2 EAST ELEVATION
 SCALE: 3/16" = 1'- 0"

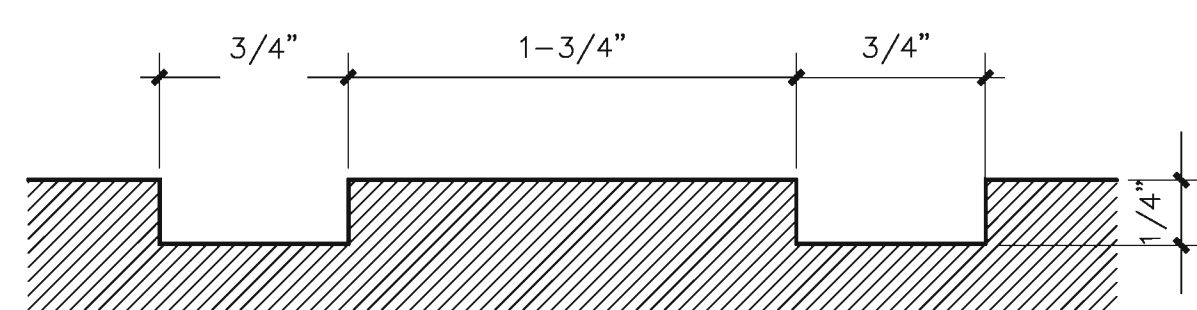
SEE SHEET A-1 FOR DUMPSTER DETAIL

1 DUMPSTER ENCLOSURE ELEVATION
 SCALE: 1/4" = 1'- 0"

TYPICAL NOTES FOR ALL ELEVATIONS

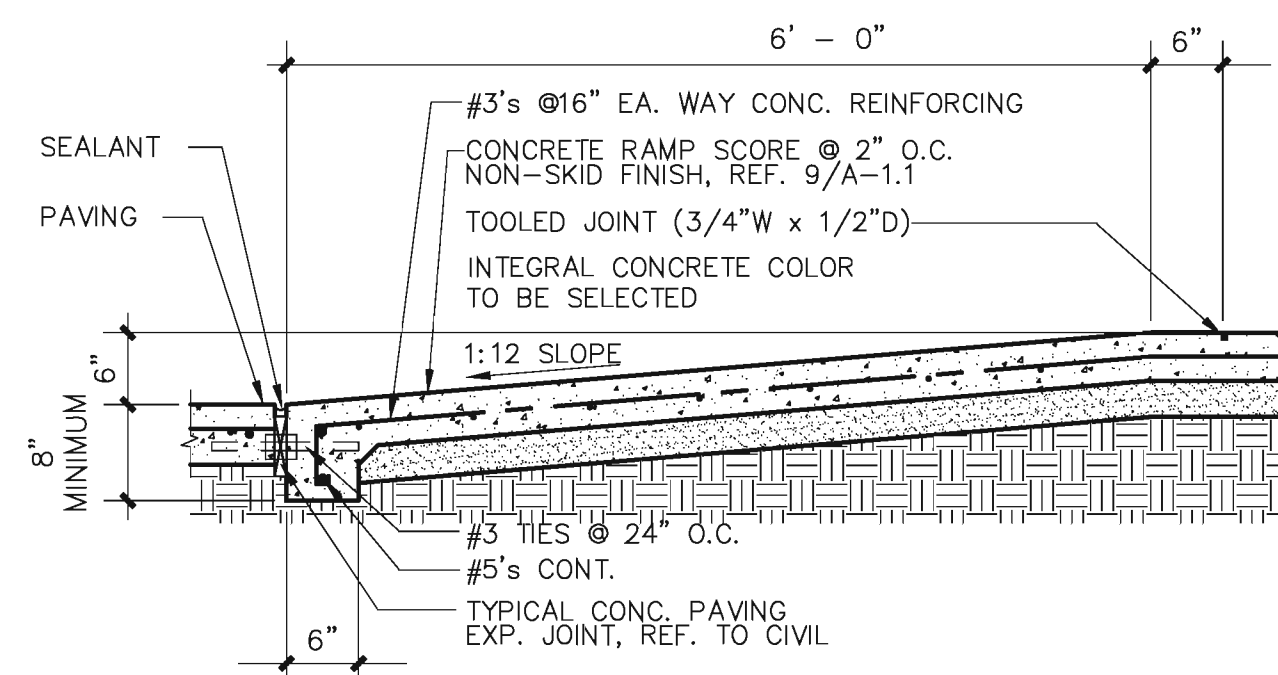
- 2'-0" BAND, JAMBS, HEADS OF DOORS AND WINDOWS, AND ACCENT IN GABLES AT ENTRY AND SIDE ELEVATIONS TO BE BRICK COLOR M-8.
- ALL ROOFS TO BE ASPHALT COMPOSITION SHINGLES WITH CONTINUOUS RIDGE VENTS INDICATED ON DRAWINGS. COLOR M-6.
- ALL WOOD TRIM AT SOFFITS, EAVES, FASCIAS, RAKES, ETC. TO BE ALUMINUM OR VINYL SIDING OVER EXPOSED WOOD.
- ALL EXTERIOR LIGHTS ARE TO BE ON PHOTO CELL. TYPICAL OF ALL ELEVATIONS.
- ALL MASONRY SURFACES ARE TO BE SPRAYED WITH WATER-PROOFING SEALER.
- ALL DOWN SPOUTS ARE TO BE PAINTED TO MATCH THE COLOR OF THE WALL MATERIAL BEHIND IT.
- CONTROL JOINTS DO NOT EXTEND THROUGH BOND BEAMS, PROVIDE SURFACE CUT ONLY AT BEAMS.

ALL SURFACES ARE CONSTRUCTED OF QUIK BRICK, 4"x16" CMU UNITS AS MANUFACTURED BY QUIK BRICK OR SPEC. BRICK. USE WHITE MORTAR WITH WHITE SAND ADDITIVE AT ALL EXTERIOR LOCATIONS OF THE 4"x16" CMU UNITS AND LIMESTONE AS INDICATED. LIMESTONE VENEER AS SUPPLIED BY SALADO QUARRY 254-793-3355. BRICK 100% OF EXTERIOR IS FIRE RESISTANT CONST. MAX. BUILDING HEIGHT IS 24'-0".

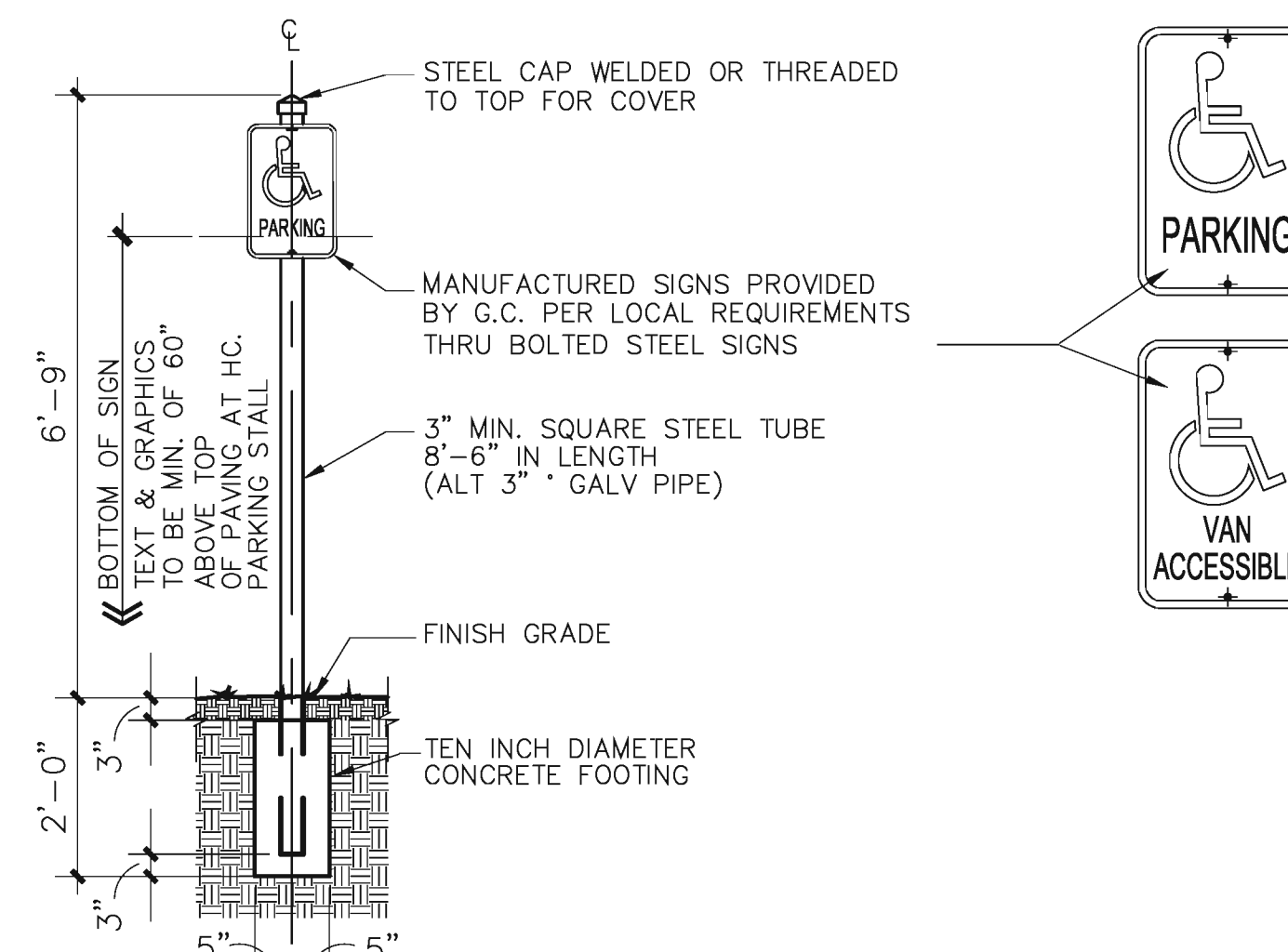


THIS IS A SECTION CUT THROUGH THE SCORED PATTERN TO BE USED ON ACCESSIBLE RAMPS

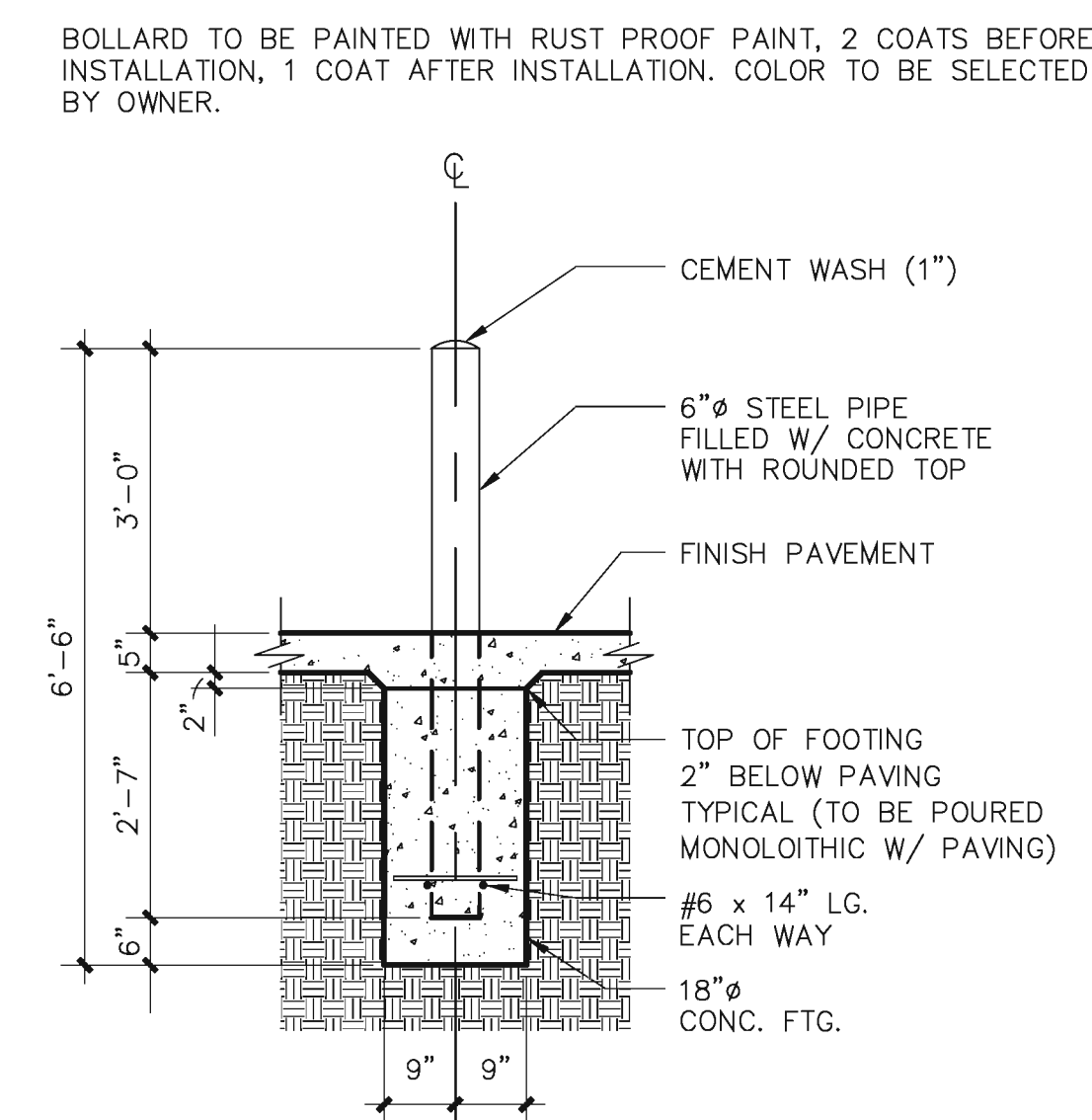
9 HC. RAMP SURFACE DETAIL
SCALE: 1" = 1'-0"



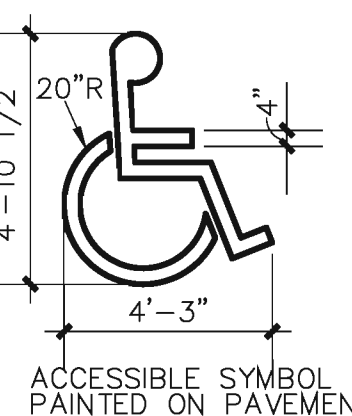
8 HC. RAMP SECTION
SCALE: 3/4" = 1'-0"



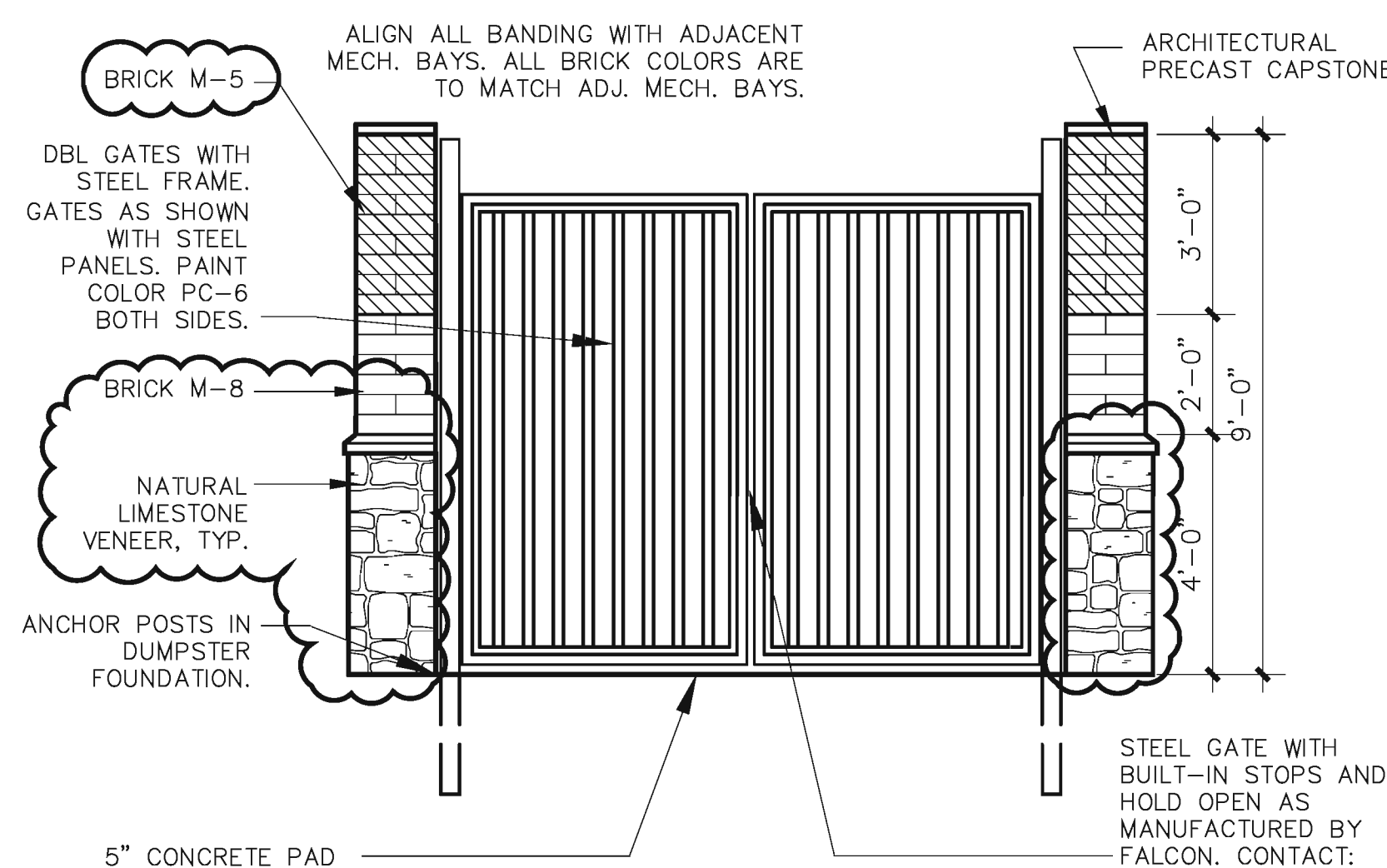
7 HANDICAP SIGN
SCALE: 1/2" = 1'-0"



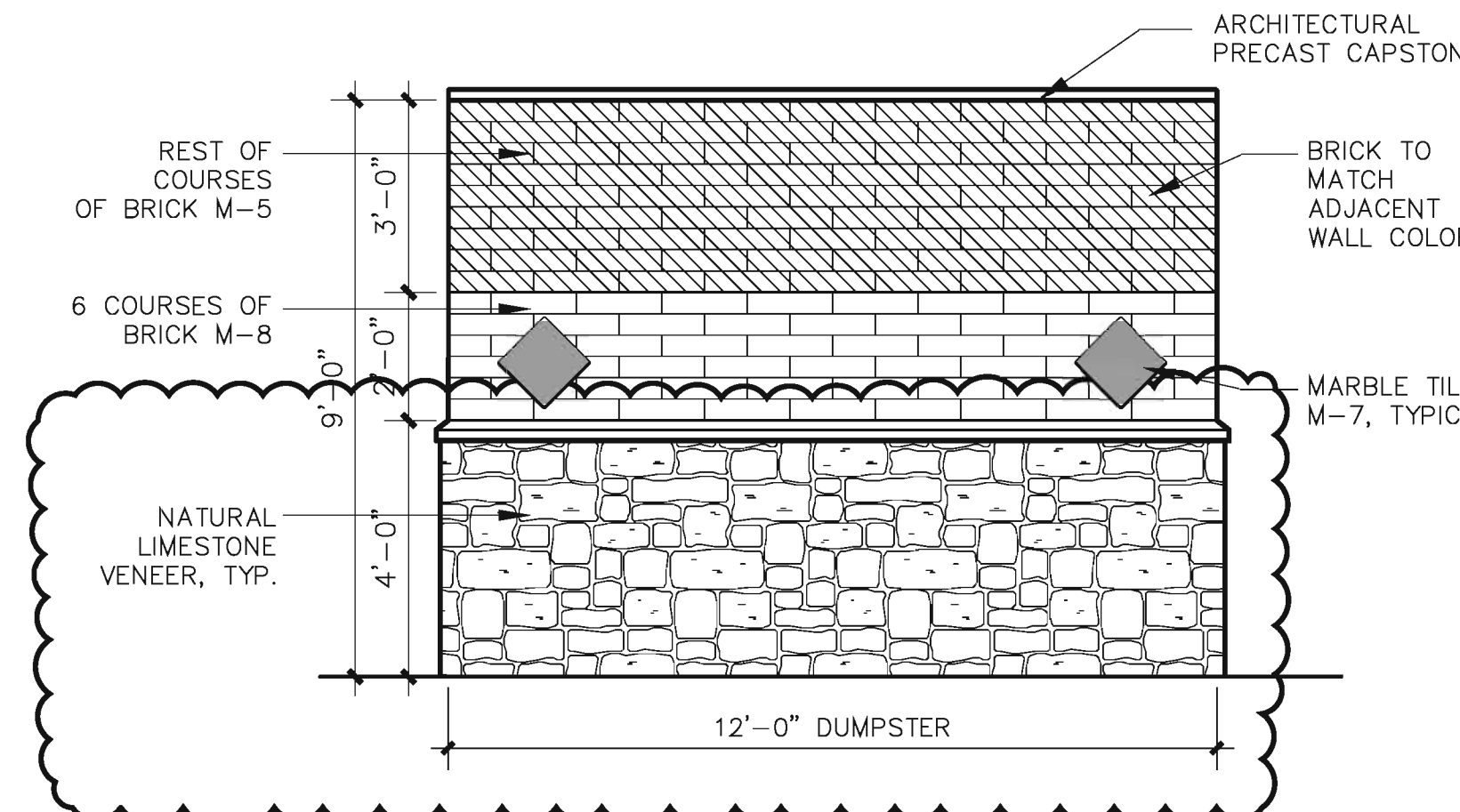
6 STEEL PIPE BOLLARD
SCALE: 1/2" = 1'-0"



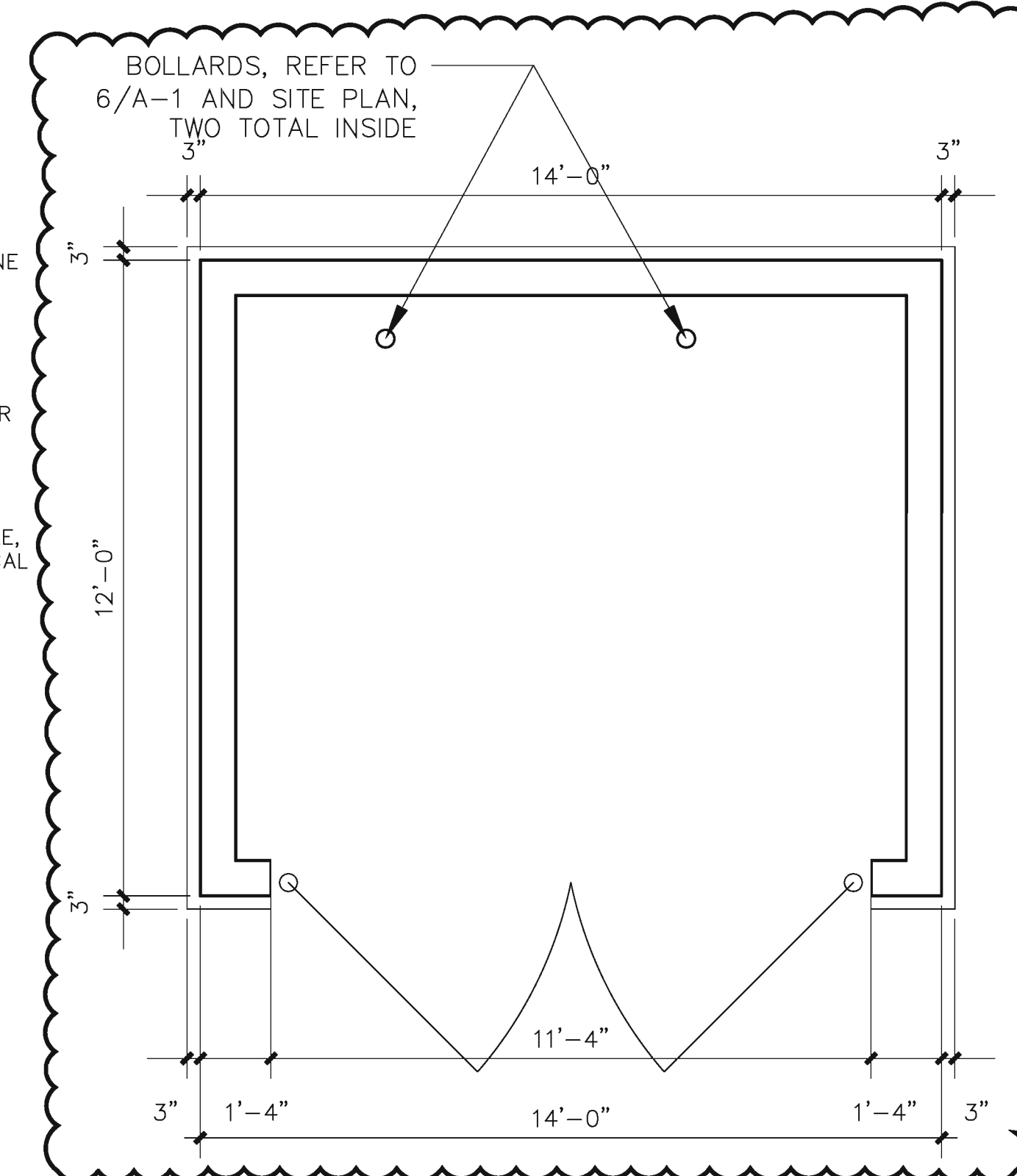
5 HANDICAP SYBOL PAINTED ON PAVEMENT
SCALE: 1/4" = 1'-0"



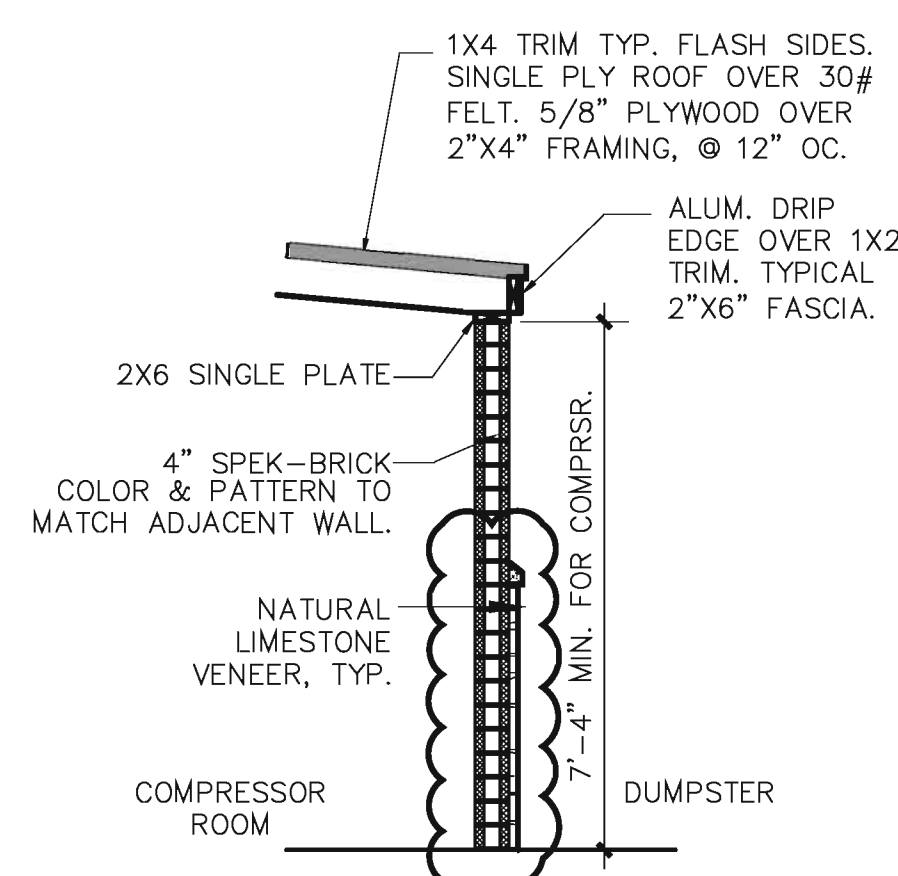
4C DUMPSTER ELEVATION
SCALE: 3/8" = 1'-0"



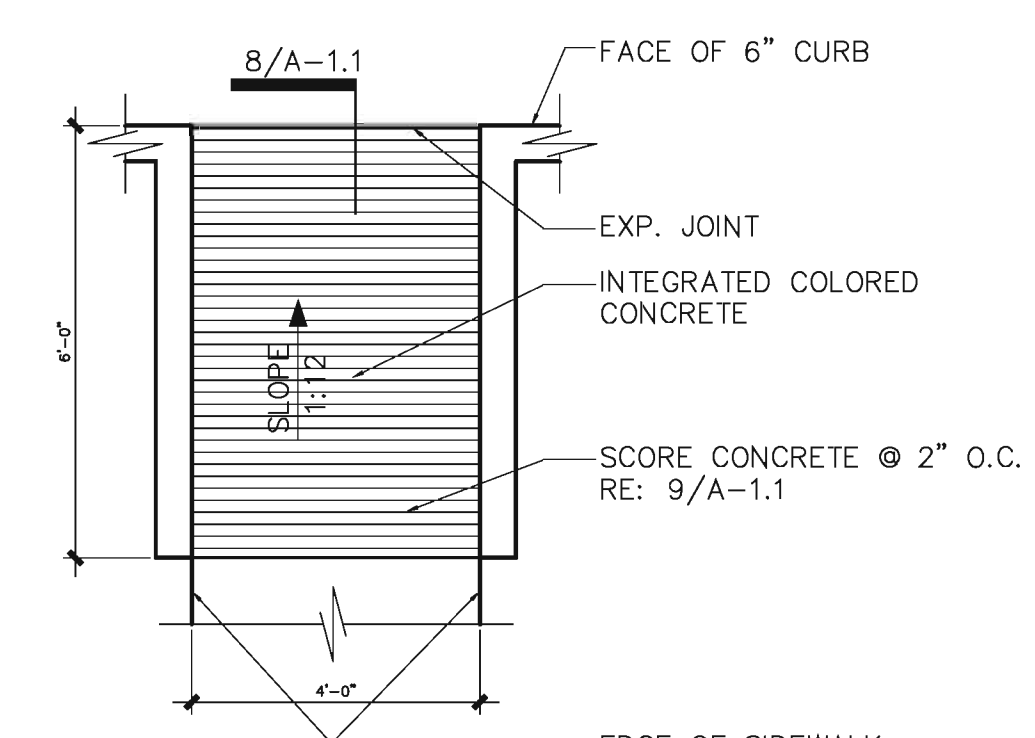
4B DUMPSTER ELEVATION
SCALE: 3/8" = 1'-0"



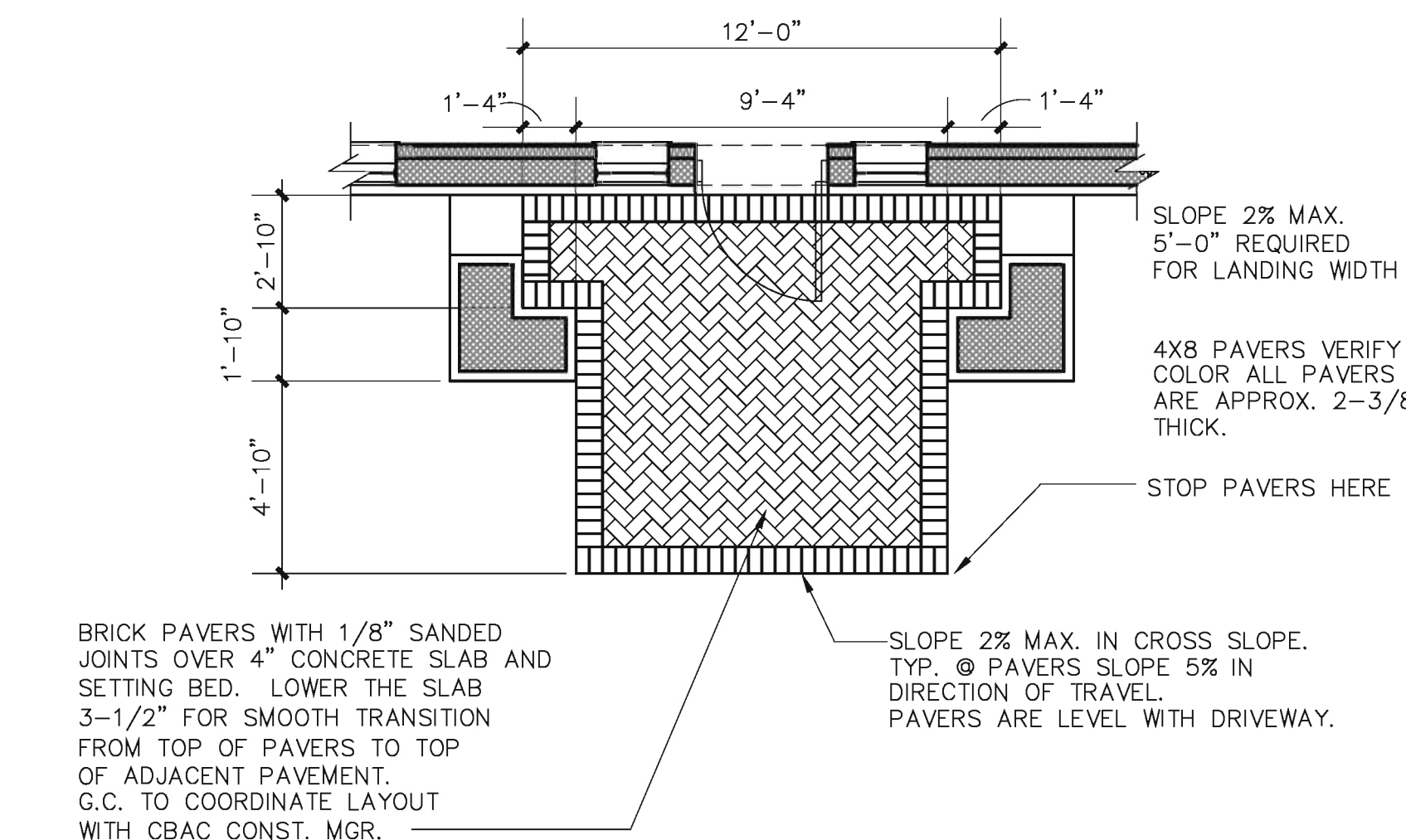
4 DUMPSTER PLAN
SCALE: 3/8" = 1'-0"



3 COMPRESSOR ROOM WALL SECTION
SCALE: 3/8" = 1'-0"



2 HC. RAMP ENLARGED PLAN
SCALE: 3/8" = 1'-0"



1 PORCH DETAIL
SCALE: 1/4" = 1'-0"

GENERAL NOTES

1. BASE INFORMATION WAS TAKEN FROM PROPERTY DESCRIPTION PLANS ON THIS PAGE. MINOR FIELD ADJUSTMENTS MAY BE NECESSARY TO ALIGN WITH EXISTING FEATURES.
2. SMOOTH TRANSITION IS REQUIRED BETWEEN ALL EXISTING AND NEW PAVEMENTS.
3. ROADWAY AND ACCESS CLEARANCES ARE SHOWN TO FACE OF CURB AND END OF PARKING SPACES. ALL PARKING SPACES ARE 9'-0" X 18'-0".
4. THE CONTRACTOR IS TO VERIFY THE EXACT LOCATION OF ALL UTILITIES. TAKE CARE TO PROTECT UTILITIES THAT ARE TO REMAIN. REPAIR ANY DAMAGED IN COMPLIANCE WITH LOCAL STANDARDS AND AT THE CONTRACTORS EXPENSE. COORDINATE ALL CONSTRUCTION WITH THE APPROPRIATE UTILITY COMPANY.
5. THE LIGHTING ON THE SITE SHALL COMPLY WITH THE LOCAL ZONING ORDINANCE AND STATE ENERGY CODE AS REQUIRED.
6. THE DUMPSTER IS TO BE ENCLOSED WITH MASONRY WALLS TO MATCH THE BUILDING EXTERIOR. THE ENCLOSURE GATES SHALL BE OPAQUE AND CONSTRUCTED OF PAINTED STEEL FRAME AND STEEL PANELS.
7. ALL OFF SITE EASEMENTS MUST BE FILED PRIOR TO START OF CONSTRUCTION.
8. IRRIGATION SYSTEM SHALL BE PROVIDED AND INCLUDED IN THE BASE BID. THE REQUIRED AUTOMATIC UNDERGROUND SPRINKLER SYSTEM SHALL HAVE SEPARATE ZONES FOR LAWN AND PLANT BEDDING AREAS. LAYOUT PER THE MANUFACTURES RECOMMENDATIONS WITH OWNERS APPROVAL REQUIRED.

DRIVEWAY CURB AND PAVING NOTES

1. CIVIL ENGINEERING DRAWING SUPERCEED INFORMATION ON THIS DRAWING. NOTIFY ARCHITECT AND OWNER OF ALL DISCREPENCIES.
2. SIDEWALK, DRIVEWAY, CURB, AND LINE AND GRADE SHALL BE SET BY CITY ENGINEER.
3. SIDEWALKS SHALL BE CONSTRUCTED WITH PORTLAND CEMENT CONCRETE, 5 SACKS OF CEMENT PER CUBIC YARD, 4-1/2" THICK WITH A MINIMUM WIDTH OF 4'-0".
4. DRIVEWAYS SHALL BE CONSTRUCTED WITH PORTLAND CEMENT CONCRETE, 5 SACKS OF CEMENT PER CUBIC YARD, 5" THICK FROM CURB TO PROPERTY LINE AND REINFORCED WITH A MINIMUM OF #3 DEFORMED STEEL REBAR AT 24" ON CENTER EACH WAY. PROVIDE 10" OF LAPS OR EQUIVALENT STEEL AREA.
5. CURB AND GUTTER SHALL BE CONSTRUCTED WITH PORTLAND CEMENT CONCRETE. REFER TO LOCAL JURISDICTION STANDARDS FOR DIMENSIONAL PROFILE OF CURB.
6. PROVIDE 1/2" EXPANSION MATERIAL AT INTERVALS OF 20'-0" (MAXIMUM) THROUGHOUT ENTIRE LENGTH OF SIDEWALK.
7. PROVIDE 1/2" EXPANSION MATERIAL BETWEEN WHERE SIDEWALKS ABUT TO A FIRE HYDRANT OR UTILITY POLE.
8. IN THE EVENT THAT MORE THAN ONE DRIVEWAY IS CONSTRUCTED FOR ACCESSING THE PROPERTY FROM THE SAME STREET APPROACH, MAINTAIN MINIMUM SEPARATION BETWEEN DRIVES AS REQUIRED BY LOCAL ZONING ORDINANCE, TRAFFIC AND TRANSPORTATION REGULATIONS, AND/OR BUILDING CODE.
9. SURFACE BETWEEN DRIVEWAYS, FROM TOP OF CURB TO SIDEWALK AND FROM SIDEWALK TO PROPERTY LINE MAY BE EITHER CONCRETE OR DIRT, OR AS REQUIRED BY ORDINANCE AND ORDINANCE AND CODES AS MADE REFERENCE TO IN #8 ABOVE.



04/12/11
Date

Revisions

- 04/01/11 - Revision 1 - Per City Site Plan Comments
- 04/12/11 - Revision 2 - Per City Site Plan Comments

Project No. 10-35

Drawn By: DK

Date: 02/25/11

Sheet Title:

SITE DETAILS

Drawing No.

A-1

Date

Revisions

Project No. 10-35

Drawn By: DK

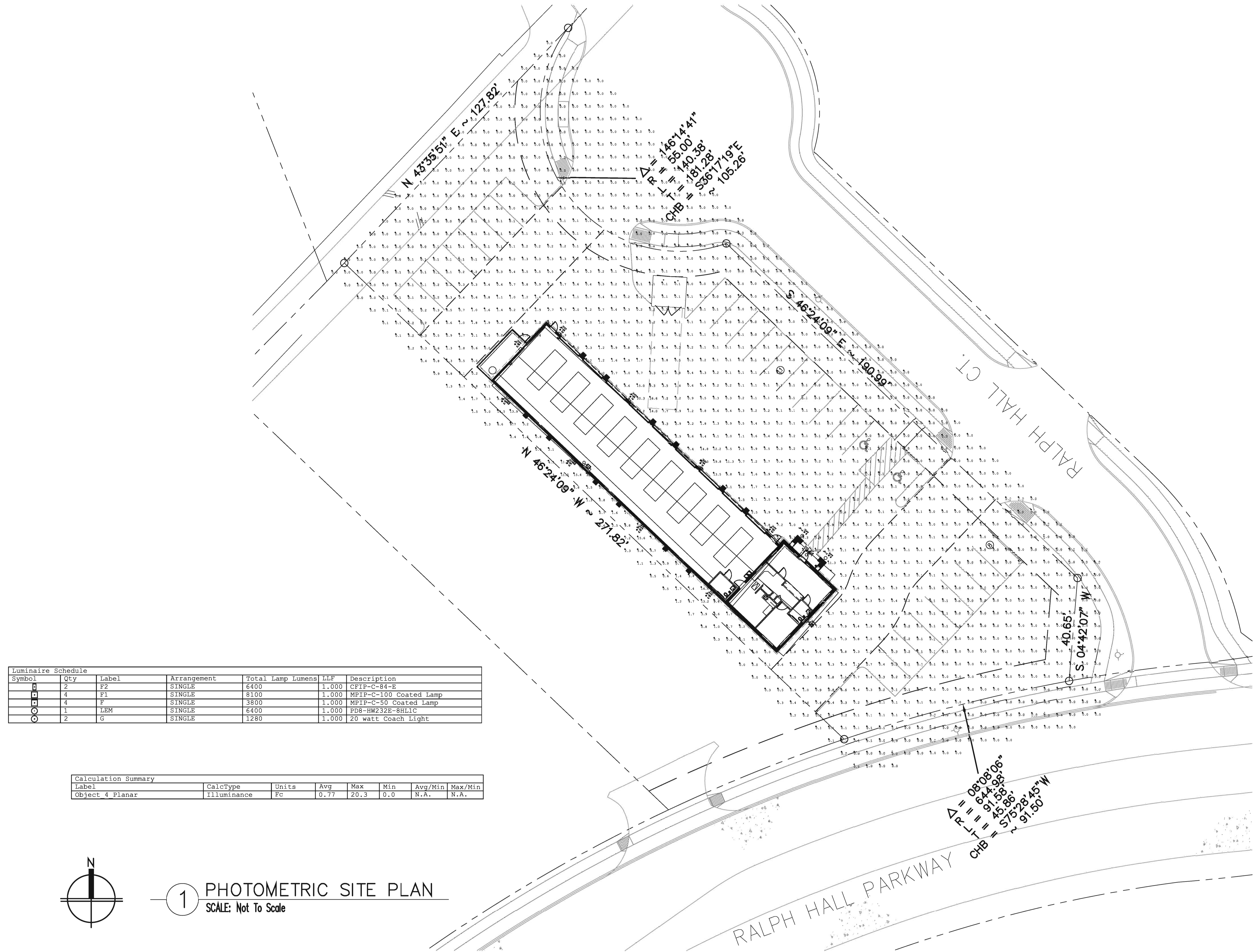
Date: 02/25/11

Sheet Title:

PHOTOMETRIC SITE PLAN

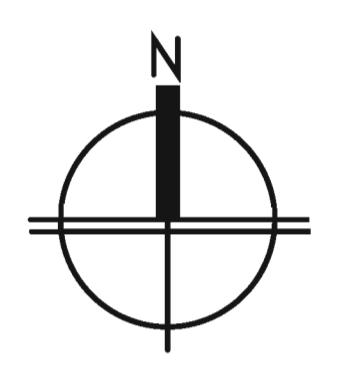
Drawing No.

E2.02



Luminaire Schedule						
Symbol	Qty	Label	Arrangement	Total Lamp Lumens	LLF	Description
□	2	F2	SINGLE	6400	1.000	CFIP-C-84-E
■	4	F1	SINGLE	8100	1.000	MPIP-C-100 Coated Lamp
□	4	F	SINGLE	3800	1.000	MPIP-C-50 Coated Lamp
○	1	LEM	SINGLE	6400	1.000	PD8-HW232E-8HLIC
○	2	G	SINGLE	1280	1.000	20 watt Coach Light

Calculation Summary							
Label	CalcType	Units	Avg	Max	Min	Avg/Min	Max/Min
Object 4 Planar	Illuminance	Fc	0.77	20.3	0.0	N.A.	N.A.



1 PHOTOMETRIC SITE PLAN
SCALE: Not To Scale

DESCRIPTION

The IMPACT Wedge cutoff wall luminaire makes an ideal complement to site design. U.L. and CUL Listed for wet locations in down mount applications and damp locations in up mounted applications.

Rugged construction and full cutoff classified optics provide facade and security lighting for light restricted zones surrounding schools, office complexes, apartments, and recreational facilities.

Catalog #		Type
Project		F
Comments		Date
Prepared by		

SPECIFICATION FEATURES

A ... Housing

The housing is a two-piece design of die-cast aluminum for precise control of tolerances and repeatability.

B ... Mounting

Gasketed and zinc plated rigid steel mounting attachment fits directly to 4" J-Box or wall with "Hook-N-Lock" mechanism for quick installation. Secured with two (2) captive corrosion resistant black oxide coated allen head set screws concealed but accessible from bottom.

C ... Optical Modules

All optical modules utilize high performance 95% reflective sheet. Strong Type II optical module is standard.

D ... Ballast

HID luminaires supplied with high power factor ballast with Class H insulation. Minimum starting temperatures are -40°C (-40°F) for HPS and -30°C (-22°F) for MP. Compact Fluorescent luminaires feature electronic universal 120-277V high efficient 50/60Hz ballast with -18°C (0°F) minimum starting.

E ... Door

Die-cast door features, 1/8" heat- and impact-resistant clear tempered glass lens mounted with internal plated steel clips and sealed with EPDM gasketing. Hinged door secured in place via two (2) captive fasteners.

F ... Finish

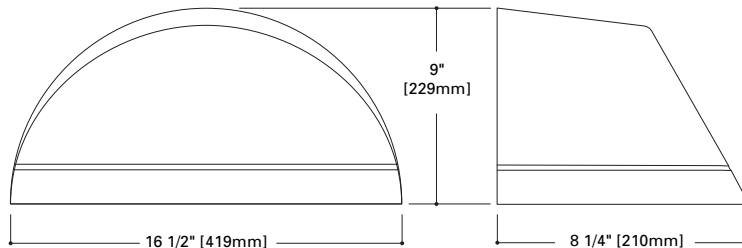
Durable polyester powder coat finish. Standard color is Bronze. Optional premium colors include: White, Black, Grey, Graphite Metallic, and Dark Platinum. Other finish colors available. Consult your Cooper Lighting Representative concerning special color requirements.



**IP
IMPACT WEDGE**

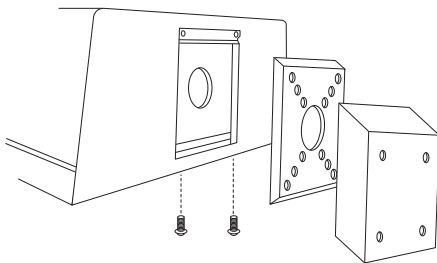
**50 - 175W
High Pressure Sodium
Pulse Start Metal Halide
Metal Halide
26 - 84W
Compact Fluorescent**

**FULL CUTOFF
WALL MOUNT LUMINAIRE**



HOOK-N-LOCK MOUNTING

(Mounting attachment included. J-Box not included.)



IMPACT™

**DARK SKY
COMPLIANT** FCO Full Cutoff

In daylight applications only.

TECHNICAL DATA

UL1598 Listed, CUL Listed
25°C Maximum Ambient Temperature
External Supply Wiring 90°C Minimum
Down Mounted – Wet Location
Up Mounted – Damp Location

ENERGY DATA

High Reactance Ballast Input Watts

- 50W HPS HPF (66 Watts)
- 50W MP HPF (72 Watts)
- 70W HPS HPF (91 Watts)
- 70W MP HPF (90 Watts)
- 100W HPS HPF (130 Watts)
- 100W MP HPF (129 Watts)
- 150W HPS HPF (190 Watts)
- 150W MP HPF (185 Watts)

CWA Ballast Input Watts

175W MH HPF (210 Watts)

Electronic Ballast Input Watts

- 26W CF HPF (29 Watts)
- 32W CF HPF (36 Watts)
- 42W CF HPF (46 Watts)
- 52W CF HPF (55 Watts)

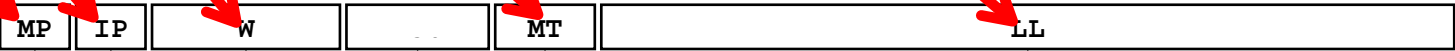
SHIPPING DATA

Approximate Net Weight:
18 lbs. (8 kgs.)



ORDERING INFORMATION

Sample Number: MPIP-W-150-MT-LL



Lamp Type ¹

- MP:** Pulse Start Metal Halide
- MH:** Metal Halide¹
- HP:** High Pressure Sodium
- CF:** Compact Fluorescent

Fixture Type

IP: Impact

Fixture Shape

W: Wedge

Lamp Wattage ¹

- MP**
- 50:** 50W
- 70:** 70W
- 100:** 100W
- 150:** 150W
- MH**
- 175:** 175W¹
- HP**
- 50:** 50W
- 70:** 70W
- 100:** 100W
- 150:** 150W
- Compact Fluorescent**
- 26:** (1) 26W
- 32:** (1) 32W
- 42:** (1) 42W
- 52:** (2) 26W
- 64:** (2) 32W
- 84:** (2) 42W

Voltage ²

- 120V:** 120V
- 208V:** 208V
- 240V:** 240V
- 277V:** 277V
- 347V:** 347V
- 480V:** 480V
- DT:** Dual-Tap, wired 277V
- MT:** Multi-Tap, wired 277V
- TT:** Triple-Tap, wired 347V
- E:** Electronic (120-277V) ³

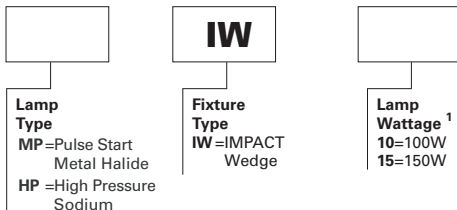
Options

- F1:** Single Fuse, Specify Voltage (120, 277, or 347V)
- F2:** Double Fuse, Specify Voltage (208 or 240V)
- PE:** Button Photocontrol (Specify Voltage)⁴
- BK:** Black
- WH:** White
- AP:** Grey
- GM:** Graphite Metallic
- DP:** Dark Platinum
- LL:** Lamp Included (Must Specify Wattage on CF)
- TR:** Tamper Resistant Hardware (2 Door Screws)
- HS:** House-side Shield Glass³
- PL:** Polycarbonate Lens^{3, 5}
- Q:** Quartz Restrike (1)T4 Lamp⁶
- EM:** Emergency Quartz Restrike (1) T4 Lamp with Time⁶ Delay Relay
- EM/SC:** Emergency Separate Circuit (1) T4 Lamp^{6, 7}
- QMR:** Quartz Restrike (1) MR16 Lamp^{8, 9}
- 2QMR:** Quartz Restrike (2) MR16 Lamps^{8, 9}
- 2QMR/SC:** Quartz Restrike (1) MR16 Lamp and (1) ^{7, 8, 9} Emergency Separate Circuit MR16 Lamp
- EMMR:** Emergency Quartz Restrike (1) MR16 Lamp with^{8, 9} Time Delay Relay
- 2EMMR:** Emergency Quartz Restrike (2) MR16 Lamps^{8, 9} with Time Delay Relay
- EM/SC/MR:** Emergency Separate Circuit (1) MR16^{7, 9, 10} Lamp
- 2EM/SC/MR:** Emergency Separate Circuit (2) MR16^{7, 9, 10} Lamps
- 2EMMR/SC:** Emergency Quartz Restrike with Time^{7, 8, 9} Delay Relay (1) MR16 and (1) MR16 Emergency Separate Circuit Lamp
- EM/SC/12V:** Emergency Separate Circuit 12V Low^{7, 11} Voltage (1) MR16 Lamp
- 2EM/SC/12V:** Emergency Separate Circuit 12V Low^{7, 11} Voltage (2) MR16 Lamps
- EMI40:** Emergency Cold Temperature (UL924 Listed) ¹² Power Pack -18 degrees C/0 degrees F, (1) CF Lamp, (Specify Voltage Below)
- CF-EM:** Emergency CF Power Pack (UL924 Listed) (1) CF¹³ Lamp, 0 degrees C/32 degrees F, (Specify Voltage Below)

- Notes:**
- 1** Lamp type not available in all wattages - see wattage table. HID lamps are medium base. 480V not available in 50W or 70W. 175W MH is available for non-U.S. markets only.
 - 2** Products also available in non-US voltages and 50HZ for international markets. Consult your Cooper Representative for availability and ordering information.
 - 3** Available with CF Option only. In cold temperatures, compact fluorescent lamps produce lower illumination levels.
 - 4** PE not available with 480V.
 - 5** Down lighting position only.
 - 6** (1) 120V Lamp, 100W maximum quartz lamp. Utility power may need to cycle to allow HID lamp to cool in warm climates. Not available with CF Option. Lamp supplied by others.
 - 7** Leads out of the back of the unit for auxiliary 120V.
 - 8** Not available with CF lamps.
 - 9** (1) or (2) 120V Lamps. GU10 base, 50W maximum each. Lamps supplied by others.
 - 10** Not Available with 52, 64, 84 CF wattages.
 - 11** (1) or (2) 12V bi-pin lamp, socket GU5.3 base, 35W maximum. Power supplied by low voltage DC source (supplied by others). Lamps supplied by others.
 - 12** Specify 120 or 277V, (-18°C) minimum temperature.
 - 13** Specify 120 or 277V, (0°C) minimum temperature.

STOCK SAMPLE NUMBER (Lamp Included)

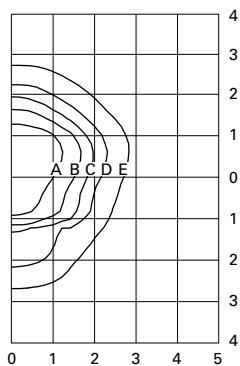
SAMPLE NUMBER: MPIW15



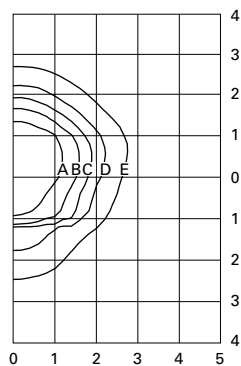
- NOTES:**
- Standard multi-tap and bronze. Refer to In-Stock Guide for availability. Options not available with stock products. Refer to standard order information to add options.

LAMP TYPE	WATTAGE	DISTRIBUTION
Pulse Start Metal Halide (MP)	50, 70, 100, 150W	TYPE II
Metal Halide (MH)	175W	TYPE II
High Pressure Sodium (HP)	50, 70, 100, 150W	TYPE II
Compact Fluorescent (CF)	(1) 26, (1) 32, (1) 42, (2) 26, (2) 32, (2) 42W	TYPE II

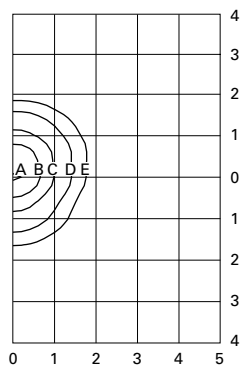
VOLTAGE CHART	
DT=Dual-Tap	120/277 (wired 277V)
MT=Multi-Tap	120/208/240/277 (wired 277V)
TT=Triple-Tap	120/277/347 (wired 347V)
E=Electronic Ballast (CF only)	120-277V (wired 277V) (50/60 HZ)



MPIP-W-150
150—Watt MP
14,000—Lumen Clear Lamp



HPIP-W-150
150—Watt HP
16,000—Lumen Clear Lamp



CFIP-W-42-E
42—Watt CF
3,200—Lumen Lamp

Footcandle Table

Select mounting height and read across for footcandle values of each isofootcandle line. Distance in units of mounting height.

Mounting Height	Isofootcandle Values for				
	A	B	C	D	E
MPIP-W-150 / HPIP-W-150					
10'	7.20	2.88	1.44	0.72	0.29
12'	5.00	2.00	1.00	0.50	0.20
14'	3.65	1.46	0.73	0.37	0.07
CFIP-W-42-E					
18'	2.46	1.23	0.62	0.25	0.12
20'	2.00	1.00	0.50	0.20	0.10
25'	1.28	0.64	0.32	0.13	0.06

DESCRIPTION

The IMPACT Wedge cutoff wall luminaire makes an ideal complement to site design. U.L. and CUL Listed for wet locations in down mount applications and damp locations in up mounted applications.

Rugged construction and full cutoff classified optics provide facade and security lighting for light restricted zones surrounding schools, office complexes, apartments, and recreational facilities.

Catalog #		Type
Project		F1
Comments		Date
Prepared by		

SPECIFICATION FEATURES

A ... Housing

The housing is a two-piece design of die-cast aluminum for precise control of tolerances and repeatability.

B ... Mounting

Gasketed and zinc plated rigid steel mounting attachment fits directly to 4" J-Box or wall with "Hook-N-Lock" mechanism for quick installation. Secured with two (2) captive corrosion resistant black oxide coated allen head set screws concealed but accessible from bottom.

C ... Optical Modules

All optical modules utilize high performance 95% reflective sheet. Strong Type II optical module is standard.

D ... Ballast

HID luminaires supplied with high power factor ballast with Class H insulation. Minimum starting temperatures are -40°C (-40°F) for HPS and -30°C (-22°F) for MP. Compact Fluorescent luminaires feature electronic universal 120-277V high efficient 50/60Hz ballast with -18°C (0°F) minimum starting.

E ... Door

Die-cast door features, 1/8" heat- and impact-resistant clear tempered glass lens mounted with internal plated steel clips and sealed with EPDM gasketing. Hinged door secured in place via two (2) captive fasteners.

F ... Finish

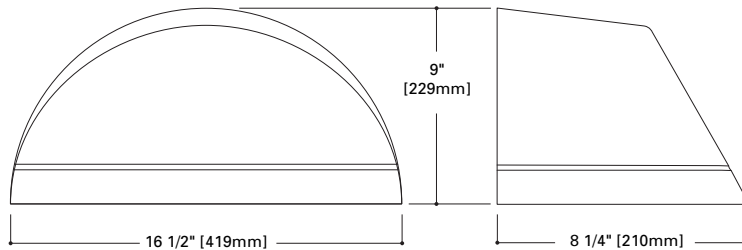
Durable polyester powder coat finish. Standard color is Bronze. Optional premium colors include: White, Black, Grey, Graphite Metallic, and Dark Platinum. Other finish colors available. Consult your Cooper Lighting Representative concerning special color requirements.



**IP
IMPACT WEDGE**

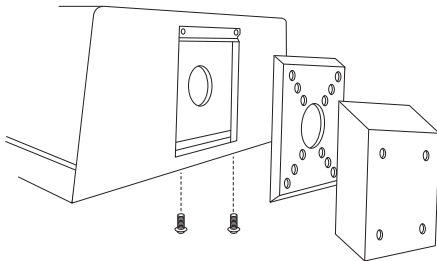
- 50 - 175W
- High Pressure Sodium
- Pulse Start Metal Halide
- Metal Halide
- 26 - 84W
- Compact Fluorescent

**FULL CUTOFF
WALL MOUNT LUMINAIRE**



HOOK-N-LOCK MOUNTING

(Mounting attachment included. J-Box not included.)



IMPACT™

**DARK SKY
COMPLIANT** FCO Full Cutoff

In daylight applications only.

TECHNICAL DATA

UL1598 Listed, CUL Listed
25°C Maximum Ambient Temperature
External Supply Wiring 90°C Minimum
Down Mounted – Wet Location
Up Mounted – Damp Location

ENERGY DATA

High Reactance Ballast Input Watts

- 50W HPS HPF (66 Watts)
- 50W MP HPF (72 Watts)
- 70W HPS HPF (91 Watts)
- 70W MP HPF (90 Watts)
- 100W HPS HPF (130 Watts)
- 100W MP HPF (129 Watts)
- 150W HPS HPF (190 Watts)
- 150W MP HPF (185 Watts)

CWA Ballast Input Watts

175W MH HPF (210 Watts)

Electronic Ballast Input Watts

- 26W CF HPF (29 Watts)
- 32W CF HPF (36 Watts)
- 42W CF HPF (46 Watts)
- 52W CF HPF (55 Watts)

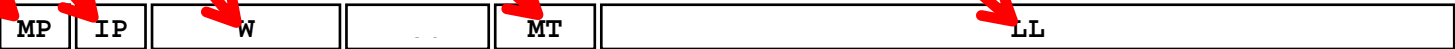
SHIPPING DATA

Approximate Net Weight:
18 lbs. (8 kgs.)



ORDERING INFORMATION

Sample Number: MPIP-W-150-MT-LL



Lamp Type ¹

- MP**: Pulse Start Metal Halide
- MH**: Metal Halide¹
- HP**: High Pressure Sodium
- CF**: Compact Fluorescent

Fixture Type

IP: Impact

Fixture Shape

W: Wedge

Lamp Wattage ¹

- MP**
- 50**: 50W
- 70**: 70W
- 100**: 100W
- 150**: 150W
- MH**
- 175**: 175W¹
- HP**
- 50**: 50W
- 70**: 70W
- 100**: 100W
- 150**: 150W
- Compact Fluorescent**
- 26**: (1) 26W
- 32**: (1) 32W
- 42**: (1) 42W
- 52**: (2) 26W
- 64**: (2) 32W
- 84**: (2) 42W

Voltage ²

- 120V**: 120V
- 208V**: 208V
- 240V**: 240V
- 277V**: 277V
- 347V**: 347V
- 480V**: 480V
- DT**: Dual-Tap, wired 277V
- MT**: Multi-Tap, wired 277V
- TT**: Triple-Tap, wired 347V
- E**: Electronic (120-277V) ³

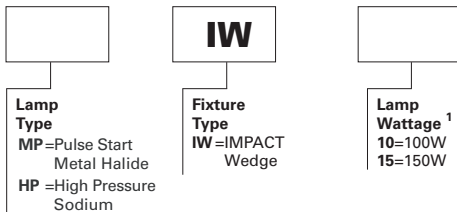
Options

- F1**: Single Fuse, Specify Voltage (120, 277, or 347V)
- F2**: Double Fuse, Specify Voltage (208 or 240V)
- PE**: Button Photocontrol (Specify Voltage)⁴
- BK**: Black
- WH**: White
- AP**: Grey
- GM**: Graphite Metallic
- DP**: Dark Platinum
- LL**: Lamp Included (Must Specify Wattage on CF)
- TR**: Tamper Resistant Hardware (2 Door Screws)
- HS**: House-side Shield Glass³
- PL**: Polycarbonate Lens^{3, 5}
- Q**: Quartz Restrike (1)T4 Lamp⁶
- EM**: Emergency Quartz Restrike (1) T4 Lamp with Time⁶ Delay Relay
- EM/SC**: Emergency Separate Circuit (1) T4 Lamp^{6, 7}
- QMR**: Quartz Restrike (1) MR16 Lamp^{8, 9}
- 2QMR**: Quartz Restrike (2) MR16 Lamps^{8, 9}
- 2QMR/SC**: Quartz Restrike (1) MR16 Lamp and (1) ^{7, 8, 9} Emergency Separate Circuit MR16 Lamp
- EMMR**: Emergency Quartz Restrike (1) MR16 Lamp with^{8, 9} Time Delay Relay
- 2EMMR**: Emergency Quartz Restrike (2) MR16 Lamps^{8, 9} with Time Delay Relay
- EM/SC/MR**: Emergency Separate Circuit (1) MR16^{7, 9, 10} Lamp
- 2EM/SC/MR**: Emergency Separate Circuit (2) MR16^{7, 9, 10} Lamps
- 2EMMR/SC**: Emergency Quartz Restrike with Time^{7, 8, 9} Delay Relay (1) MR16 and (1) MR16 Emergency Separate Circuit Lamp
- EM/SC/12V**: Emergency Separate Circuit 12V Low^{7, 11} Voltage (1) MR16 Lamp
- 2EM/SC/12V**: Emergency Separate Circuit 12V Low^{7, 11} Voltage (2) MR16 Lamps
- EMI40**: Emergency Cold Temperature (UL924 Listed) ¹² Power Pack -18 degrees C/0 degrees F, (1) CF Lamp, (Specify Voltage Below)
- CF-EM**: Emergency CF Power Pack (UL924 Listed) (1) CF¹³ Lamp, 0 degrees C/32 degrees F, (Specify Voltage Below)

- Notes:**
- 1 Lamp type not available in all wattages - see wattage table. HID lamps are medium base. 480V not available in 50W or 70W. 175W MH is available for non-U.S. markets only.
 - 2 Products also available in non-US voltages and 50HZ for international markets. Consult your Cooper Representative for availability and ordering information.
 - 3 Available with CF Option only. In cold temperatures, compact fluorescent lamps produce lower illumination levels.
 - 4 PE not available with 480V.
 - 5 Down lighting position only.
 - 6 (1) 120V Lamp, 100W maximum quartz lamp. Utility power may need to cycle to allow HID lamp to cool in warm climates. Not available with CF Option. Lamp supplied by others.
 - 7 Leads out of the back of the unit for auxiliary 120V.
 - 8 Not available with CF lamps.
 - 9 (1) or (2) 120V Lamps. GU10 base, 50W maximum each. Lamps supplied by others.
 - 10 Not Available with 52, 64, 84 CF wattages.
 - 11 (1) or (2) 12V bi-pin lamp, socket GU5.3 base, 35W maximum. Power supplied by low voltage DC source (supplied by others). Lamps supplied by others.
 - 12 Specify 120 or 277V, (-18°C) minimum temperature.
 - 13 Specify 120 or 277V, (0°C) minimum temperature.

STOCK SAMPLE NUMBER (Lamp Included)

SAMPLE NUMBER: MPIW15



Lamp Type
MP=Pulse Start Metal Halide
HP=High Pressure Sodium

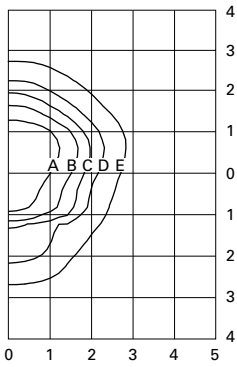
Fixture Type
IW=IMPACT Wedge

Lamp Wattage ¹
10=100W
15=150W

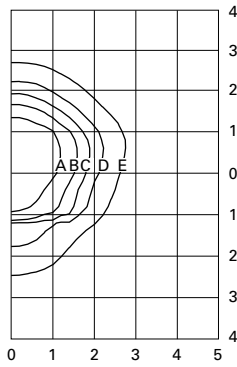
NOTES:
 Standard multi-tap and bronze. Refer to In-Stock Guide for availability. Options not available with stock products. Refer to standard order information to add options.

LAMP TYPE	WATTAGE	DISTRIBUTION
Pulse Start Metal Halide (MP)	50, 70, 100, 150W	TYPE II
Metal Halide (MH)	175W	TYPE II
High Pressure Sodium (HP)	50, 70, 100, 150W	TYPE II
Compact Fluorescent (CF)	(1) 26, (1) 32, (1) 42, (2) 26, (2) 32, (2) 42W	TYPE II

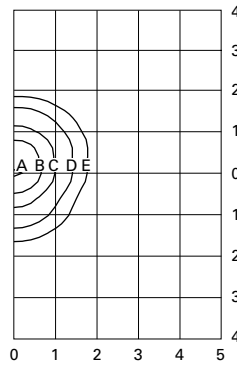
VOLTAGE CHART	
DT=Dual-Tap	120/277 (wired 277V)
MT=Multi-Tap	120/208/240/277 (wired 277V)
TT=Triple-Tap	120/277/347 (wired 347V)
E=Electronic Ballast (CF only)	120-277V (wired 277V) (50/60 HZ)



MPIP-W-150
150—Watt MP
14,000—Lumen Clear Lamp



HPIP-W-150
150—Watt HP
16,000—Lumen Clear Lamp



CFIP-W-42-E
42—Watt CF
3,200—Lumen Lamp

Footcandle Table

Select mounting height and read across for footcandle values of each isofootcandle line. Distance in units of mounting height.

Mounting Height	Isofootcandle Values for				
	A	B	C	D	E
MPIP-W-150 / HPIP-W-150					
10'	7.20	2.88	1.44	0.72	0.29
12'	5.00	2.00	1.00	0.50	0.20
14'	3.65	1.46	0.73	0.37	0.07
CFIP-W-42-E					
18'	2.46	1.23	0.62	0.25	0.12
20'	2.00	1.00	0.50	0.20	0.10
25'	1.28	0.64	0.32	0.13	0.06

COOPER LIGHTING - LUMARK®

DESCRIPTION

The IMPACT Wedge cutoff wall luminaire makes an ideal complement to site design. U.L. and CUL Listed for wet locations in down mount applications and damp locations in up mounted applications.

Rugged construction and full cutoff classified optics provide facade and security lighting for light restricted zones surrounding schools, office complexes, apartments, and recreational facilities.

Catalog #		Type
Project		F2
Comments		Date
Prepared by		

SPECIFICATION FEATURES

A ... Housing

The housing is a two-piece design of die-cast aluminum for precise control of tolerances and repeatability.

B ... Mounting

Gasketed and zinc plated rigid steel mounting attachment fits directly to 4" J-Box or wall with "Hook-N-Lock" mechanism for quick installation. Secured with two (2) captive corrosion resistant black oxide coated allen head set screws concealed but accessible from bottom.

C ... Optical Modules

All optical modules utilize high performance 95% reflective sheet. Strong Type II optical module is standard.

D ... Ballast

HID luminaires supplied with high power factor ballast with Class H insulation. Minimum starting temperatures are -40°C (-40°F) for HPS and -30°C (-22°F) for MP. Compact Fluorescent luminaires feature electronic universal 120-277V high efficient 50/60Hz ballast with -18°C (0°F) minimum starting.

E ... Door

Die-cast door features, 1/8" heat- and impact-resistant clear tempered glass lens mounted with internal plated steel clips and sealed with EPDM gasketing. Hinged door secured in place via two (2) captive fasteners.

F ... Finish

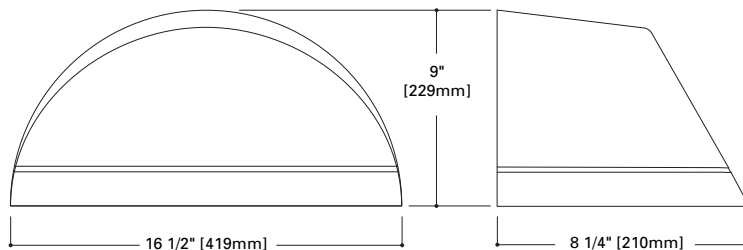
Durable polyester powder coat finish. Standard color is Bronze. Optional premium colors include: White, Black, Grey, Graphite Metallic, and Dark Platinum. Other finish colors available. Consult your Cooper Lighting Representative concerning special color requirements.



IP IMPACT WEDGE

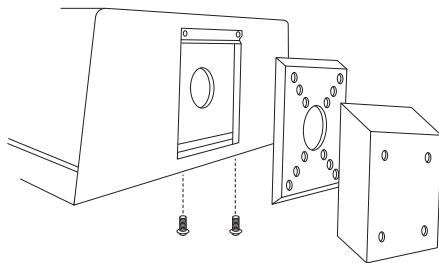
50 - 175W
High Pressure Sodium
Pulse Start Metal Halide
Metal Halide
26 - 84W
Compact Fluorescent

FULL CUTOFF
WALL MOUNT LUMINAIRE



HOOK-N-LOCK MOUNTING

(Mounting attachment included. J-Box not included.)



IMPACT™

**DARK SKY
COMPLIANT** FCO
Full Cutoff

In daylight applications only.

TECHNICAL DATA

UL1598 Listed, CUL Listed
25°C Maximum Ambient Temperature
External Supply Wiring 90°C Minimum
Down Mounted – Wet Location
Up Mounted – Damp Location

ENERGY DATA

High Reactance Ballast Input Watts

50W HPS HPF (66 Watts)
50W MP HPF (72 Watts)
70W HPS HPF (91 Watts)
70W MP HPF (90 Watts)
100W HPS HPF (130 Watts)
100W MP HPF (129 Watts)
150W HPS HPF (190 Watts)
150W MP HPF (185 Watts)

CWA Ballast Input Watts

175W MH HPF (210 Watts)

Electronic Ballast Input Watts

26W CF HPF (29 Watts)
32W CF HPF (36 Watts)
42W CF HPF (46 Watts)
52W CF HPF (55 Watts)

SHIPPING DATA

Approximate Net Weight:
18 lbs. (8 kgs.)



ORDERING INFORMATION

Sample Number: MPIP-W-150-MT-LL

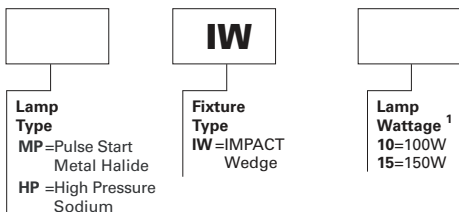
Lamp Type ¹ MP: Pulse Start Metal Halide MH: Metal Halide ¹ HP: High Pressure Sodium CF: Compact Fluorescent	Fixture Type IP: Impact Fixture Shape W: Wedge	Lamp Wattage ¹ MP 50: 50W 70: 70W 100: 100W 150: 150W MH 175: 175W ¹ HP 50: 50W 70: 70W 100: 100W 150: 150W Compact Fluorescent 26: (1) 26W 32: (1) 32W 42: (1) 42W 52: (2) 26W 64: (2) 32W 84: (2) 42W	Voltage ² 120V: 120V 208V: 208V 240V: 240V 277V: 277V 347V: 347V 480V: 480V DT: Dual-Tap MT: Multi-Tap, wired 277V TT: Triple-Tap, wired 347V E: Electronic (120-277V) ³
---	---	--	---

Options F1: Single Fuse, Specify Voltage (120, 277, or 347V) F2: Double Fuse, Specify Voltage (208 or 240V) PE: Button Photocontrol (Specify Voltage) ⁴ BK: Black WH: White AP: Grey GM: Graphite Metallic DP: Dark Platinum LL: Lamp Included (Must Specify Wattage on CF) TR: Tamper Resistant Hardware (2 Door Screws) HS: House-side Shield Glass ³ PL: Polycarbonate Lens ^{3, 5} Q: Quartz Restrike (1)T4 Lamp ⁶ EM: Emergency Quartz Restrike (1) T4 Lamp with Time ⁶ Delay Relay EM/SC: Emergency Separate Circuit (1) T4 Lamp ^{6, 7} QMR: Quartz Restrike (1) MR16 Lamp ^{8, 9} 2QMR: Quartz Restrike (2) MR16 Lamps ^{8, 9} 2QMR/SC: Quartz Restrike (1) MR16 Lamp and (1) ^{7, 8, 9} Emergency Separate Circuit MR16 Lamp EMMR: Emergency Quartz Restrike (1) MR16 Lamp with ^{8, 9} Time Delay Relay 2EMMR: Emergency Quartz Restrike (2) MR16 Lamps ^{8, 9} with Time Delay Relay EM/SC/MR: Emergency Separate Circuit (1) MR16 ^{7, 9, 10} Lamp 2EM/SC/MR: Emergency Separate Circuit (2) MR16 ^{7, 9, 10} Lamps 2EMMR/SC: Emergency Quartz Restrike with Time ^{7, 8, 9} Delay Relay (1) MR16 and (1) MR16 Emergency Separate Circuit Lamp EM/SC/12V: Emergency Separate Circuit 12V Low ^{7, 11} Voltage (1) MR16 Lamp 2EM/SC/12V: Emergency Separate Circuit 12V Low ^{7, 11} Voltage (2) MR16 Lamps EMI40: Emergency Cold Temperature (UL924 Listed) ¹² Power Pack -18 degrees C/0 degrees F, (1) CF Lamp, (Specify Voltage Below) CF-EM: Emergency CF Power Pack (UL924 Listed) (1) CF ¹³ Lamp, 0 degrees C/32 degrees F, (Specify Voltage Below)
--

- Notes:**
- Lamp type not available in all wattages - see wattage table. HID lamps are medium base. 480V not available in 50W or 70W. 175W MH is available for non-U.S. markets only.
 - Products also available in non-US voltages and 50HZ for international markets. Consult your Cooper Representative for availability and ordering information.
 - Available with CF Option only. In cold temperatures, compact fluorescent lamps produce lower illumination levels.
 - PE not available with 480V.
 - Down lighting position only.
 - (1) 120V Lamp, 100W maximum quartz lamp. Utility power may need to cycle to allow HID lamp to cool in warm climates. Not available with CF Option. Lamp supplied by others.
 - Leads out of the back of the unit for auxillary 120V.
 - Not available with CF lamps.
 - (1) or (2) 120V Lamps. GU10 base, 50W maximum each. Lamps supplied by others.
 - Not Available with 52, 64, 84 CF wattages.
 - (1) or (2) 12V bi-pin lamp, socket GU5.3 base, 35W maximum. Power supplied by low voltage DC source (supplied by others). Lamps supplied by others.
 - Specify 120 or 277V, (-18°C) minimum temperature.
 - Specify 120 or 277V, (0°C) minimum temperature.

STOCK SAMPLE NUMBER (Lamp Included)

SAMPLE NUMBER: MPIW15

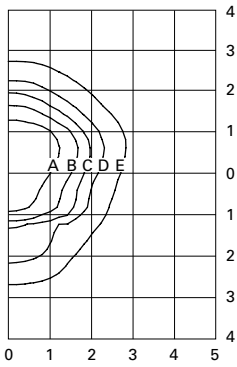


NOTES:

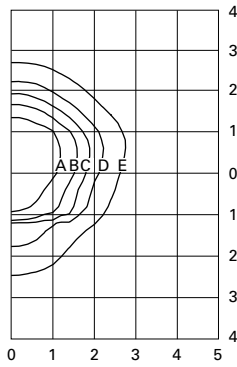
Standard multi-tap and bronze. Refer to In-Stock Guide for availability. Options not available with stock products. Refer to standard order information to add options.

LAMP TYPE	WATTAGE	DISTRIBUTION
Pulse Start Metal Halide (MP)	50, 70, 100, 150W	TYPE II
Metal Halide (MH)	175W	TYPE II
High Pressure Sodium (HP)	50, 70, 100, 150W	TYPE II
Compact Fluorescent (CF)	(1) 26, (1) 32, (1) 42, (2) 26, (2) 32, (2) 42W	TYPE II

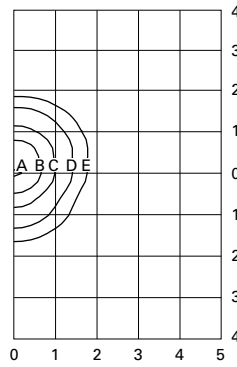
VOLTAGE CHART	
DT=Dual-Tap	120/277 (wired 277V)
MT=Multi-Tap	120/208/240/277 (wired 277V)
TT=Triple-Tap	120/277/347 (wired 347V)
E=Electronic Ballast (CF only)	120-277V (wired 277V) (50/60 HZ)



MPIP-W-150
150—Watt MP
14,000—Lumen Clear Lamp



HPIP-W-150
150—Watt HP
16,000—Lumen Clear Lamp



CFIP-W-42-E
42—Watt CF
3,200—Lumen Lamp

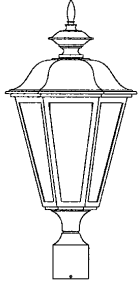
Footcandle Table

Select mounting height and read across for footcandle values of each isofootcandle line. Distance in units of mounting height.

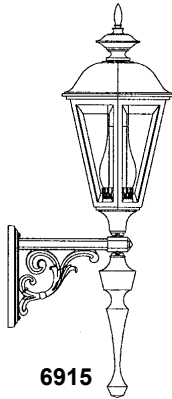
Mounting Height	Isofootcandle Values for				
	A	B	C	D	E
MPIP-W-150 / HPIP-W-150					
10'	7.20	2.88	1.44	0.72	0.29
12'	5.00	2.00	1.00	0.50	0.20
14'	3.65	1.46	0.73	0.37	0.07
CFIP-W-42-E					
18'	2.46	1.23	0.62	0.25	0.12
20'	2.00	1.00	0.50	0.20	0.10
25'	1.28	0.64	0.32	0.13	0.06

6900 / 6600 / 66 HERITAGE

SPECIFICATIONS



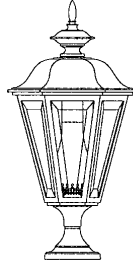
6930



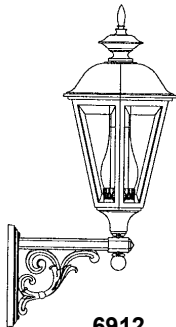
6915



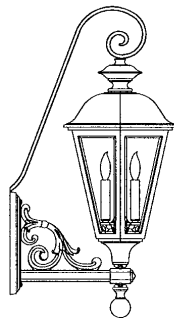
6927



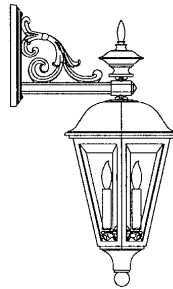
6935



6912



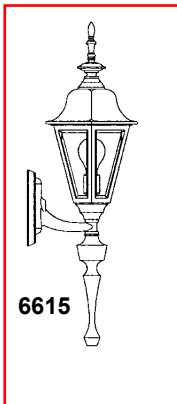
6913



6918



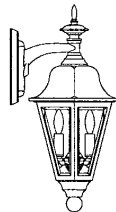
6630



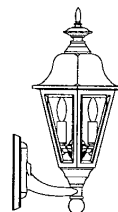
6615



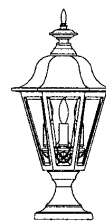
6627



6617



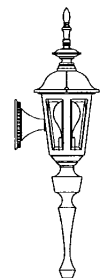
6616



6635



66BU



66LF

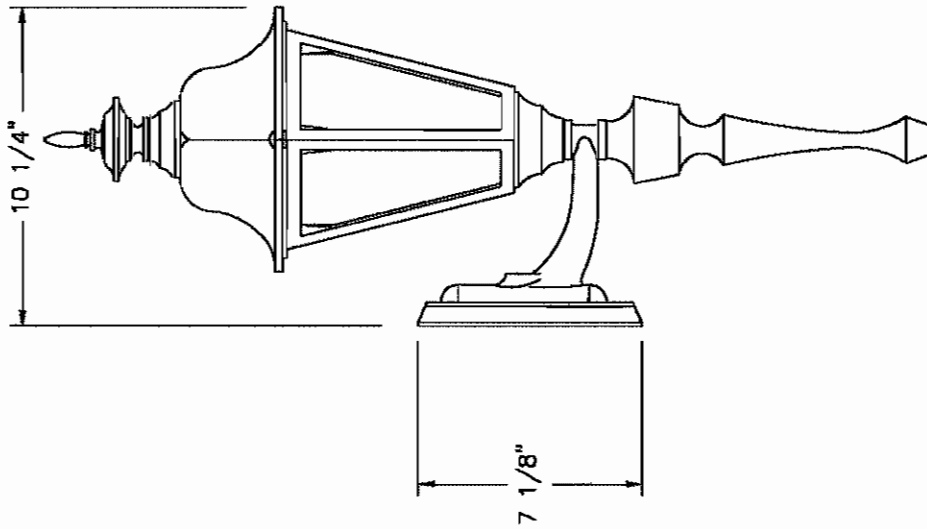
Cat. No.	W	H	Ext.*	Top to Outlet	Max.** INC	Max. HID	Max. CF
6930	13"	27"			200W	100W†	42W†
6915	13"	38"	16 1/2"	26 1/2"	200W	100W††	42W††
6913	13"	30 1/2"	16 1/2"	27"	200W	100W††	32W††
6912	13"	32 1/2"	16 1/2"	26 1/2"	200W	100W††	42W††
6918	13"	30"	16 1/2"	5"	200W	100W††	32W††
6927	13"	65" w/36" chain			200W	100W†	32W†
6935	13"	25 1/2"			200W	100W††	42W††
6630†	10"	19"			100W	50W†	26W†
6615	10"	30"	10 1/2"	15"	100W	50W††	32W††
6616	10"	19"	10 1/2"	15"	100W	50W††	32W††
6617	10"	19 1/2"	10 1/2"	7 1/2"	100W	50W††	32W††
6627	10"	57" w/36" chain			100W	50W††	26W
6635	10"	19"			100W	50W††	26W††
66BU	7"	14"	8"	9"	60W	—	—
66LF	7"	20"	8"	9"	60W	—	—

* Add 2" to 4" depending on Ballast Box requirement.

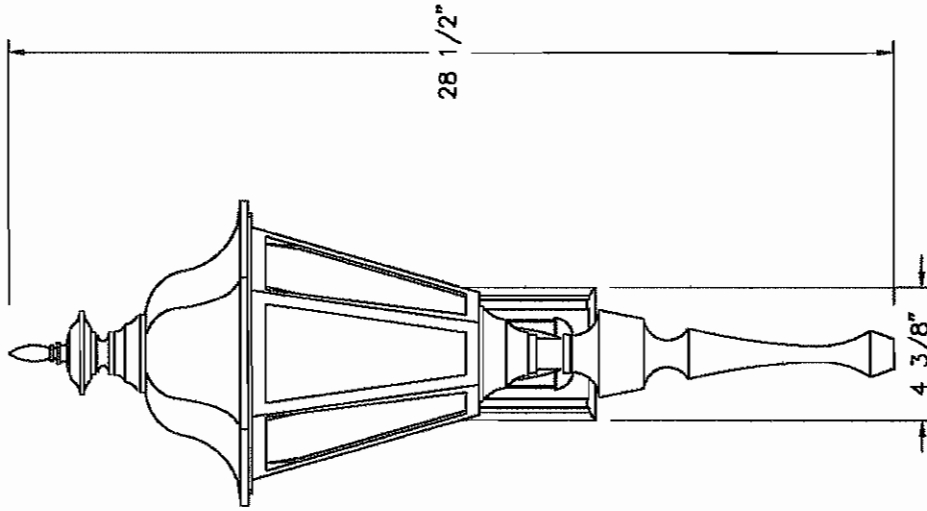
** 3 Light Cluster is 25 watt max lamp per socket. 66 Series not available with 3 Light Cluster.

† Remote Ballast required if HID or CF. †† Ballast Box required.

66 & 6600 Series not available with Frosted Chimney or Refractor.



WHITE ACRYLIC LENS



CHRISTIAN BROTHERS AUTOMOTIVE		POLE HEIGHTS HAVE A TOLERANCE OF + OR - 2"	
TYPE: B		OCT 2 2008	
6615		DRAWN LMG	3/16" = 1'
		DRAWING NUMBER	
		SC7215	
SOCKET TYPE		MED	
WATTAGE			
LIGHT SOURCE		INC	
VOLTAGE			
FUSE			
FINISH		BLACK	

CATALOG#: **PD8-HLW242EEM/8HL1EMC**

TYPE: **L-EM**



DESCRIPTION

The PDS emergency fixtures create an architecturally neutral appearance via an internally mounted test switch/indicator light. The elimination of the traditional test switch and separate indicator light mounted externally in a separate junction box, allows for easier installation as well.

The "EM" frame, socket adapter, and battery pack are pre-assembled at the factory and utilize our No Fuss Bar Hangers™ to speed installation and minimize labor costs at the job site.

PDS EM reflectors boast equal 55° cutoff to lamp and lamp image. Low-iridescent clear reflector with white painted self-flange is standard. Lamp positions lock in place ensuring photometric performance. EM reflectors are punched for test switch/indicator light and are keyed for proper alignment.

SPECIFICATION FEATURES

Lamp CF42DTEIN841eco

A--Clear upper reflector for maximum light output. Choice of prismatic acrylic lens or clear low iridescent radial louver affixed to lower reflector. Louver is .050" thick aluminium.

B--Socket Cap
One-piece folded metal cap. Positive connection between cap and reflector is provided by a twist-and-lock mechanism. Multiple slots allow for precise lamp positions.

C--Socket and Socket Adapter
4-pin G24q base with stainless steel spring for positive retention. Guide post inserts rejects two-pin bases to ensure proper lamping. Multi-voltage electronic ballast accommodates 120V thru 277V.

D--Frame
Galvanized steel frame with 1/2" plaster lip is standard. Accommodates ceilings up to 2" (50mm) thick.

E--No Fuss Bar Hanger
Bar hanger locks to T-bar with a screwdriver or pliers. Centering mechanism allows consistent centering of fixtures, 2 1/2" vertical adjustment and can be used with 1/2" EMT

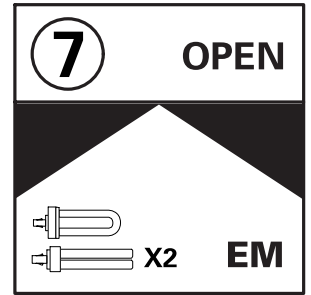
F--Junction Box
Galvanized with (6) 1/2" and (2) 3/4" KO's. Listed for twelve #12g 90° conductors and feed through wiring.

G--Internal test switch/indicator light is visible and accessible without removing trim. Adjusts after installation for ceilings up to 2" thick.

H--Sealed Ni-Cad battery powers compact fluorescent lamp for 90 minutes of emergency illumination. Galvanized with (6) 1/2" and (2) 3/4" KO's.

Insulation Detector
Thermal protection deactivates unit if improper lamp type or wattage is used, or if insulation is placed too close to the fixture.

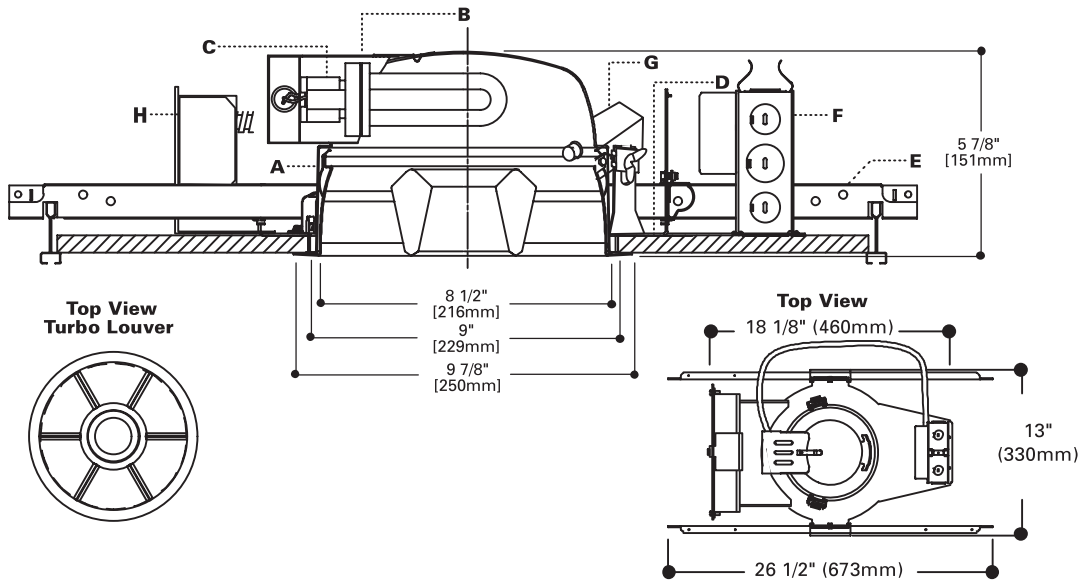
Labels
CUL listed, damp location, wet location with lens only, IBEW union made.



PD8HWL232EEM

(2) 42W MAX TRIPLE
Compact Fluorescent

8" EMERGENCY
LENSED OR LOUVERED
HORIZONTAL
DOWNLIGHT



PD8HWL232EEM

Lamp	System	Open
Voltage wattage: wattage circuit		
Input 120V, 42W	: 93.0W, 0.78A	
277V, 42W	: 93.0W, 0.33A	
Power Factor: >.95		
THD: <10%		
Sound Rating: A		
Min Starting Temp.: -20°C (-5°F)		

ORDERING INFORMATION

SAMPLE NUMBER: PD8HWL232EEM-8HL1EMC

Order frame and reflector separately for a complete unit.

Frame (Includes socket adapter and battery pack)

Reflector

PD8HWL232EEM (2) 42, 32, or 26W Quad

- 8HL1EMC**=8" Horizontal Prismatic Acrylic lens, Clear
- 8HL1EMBB**=8" Horizontal Prismatic Acrylic lens, Black Baffle
- 8HL1EMWB**=8" Horizontal Prismatic Acrylic lens, White Baffle
- 8HL2EMC**=8" Horizontal Prismatic Glass lens, Clear
- 8HL2EMBB**=8" Horizontal Prismatic Glass lens, Black Baffle
- 8HL2EMWB**=8" Horizontal Prismatic Glass lens, White Baffle
- 8HREMC**=8" Radial Louver, Clear

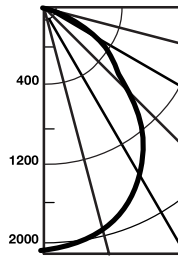
PHOTOMETRICS

PD8HW232EEM-8HL1EMC

Test No. H23370

Lamp=(2)42W Triple
Compact
Fluorescent
Lumens=3200 each
Prismatic Lens, Clear
Spacing Criteria 0°=1
90°=1.2
Efficiency=42.5%

Candela



Deg.	CD	
	0°	90°
90	0	0
85	5	6
75	30	30
65	122	140
55	265	302
45	571	707
35	890	1107
25	1201	1311
15	1454	1487
5	1570	1569
0	1577	1577

Cone of Light

Distance to Illuminated Plane	Initial Nadir Footcandles	Beam Diameter
4'0"	99	4'6"
6'0"	44	6'6"
8'0"	25	8'6"
10'0"	16	11'0"
12'0"	11	13'0"
14'0"	8	15'6"
16'0"	6	17'6"

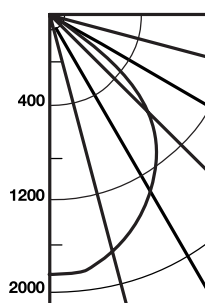
Beam diameter is to 50% of maximum footcandles, rounded to the nearest half-foot. Footcandle values are initial, apply appropriate light loss factors where necessary.

PD8HWL232EEM-8HREMC

Test No. H23363

Lamp=(2)42W Quad
Compact
Fluorescent
Lumens=3200 each
Radial Louver, Clear
Spacing Criteria
0°-180°=1.2
90°-270°=1.4
Efficiency=47.6%

Candela



Deg.	CD	
	0°	90°
90	0	0
85	1	1
75	8	7
65	49	46
55	338	353
45	727	927
35	974	1262
25	1197	1594
15	1356	1752
5	1401	1465
0	1395	1395

Cone of Light

Distance to Illuminated Plane	Initial Nadir Footcandles	Beam Diameter
2'0"	349	2'6"
4'0"	87	5'6"
6'0"	39	8'0"
8'0"	22	10'6"
10'0"	14	13'6"
12'0"	10	16'0"
14'0"	7	19'0"
16'0"	5	21'6"

Beam diameter is to 50% of maximum footcandles, rounded to the nearest half-foot. Footcandle values are initial, apply appropriate light loss factors where necessary.

NOTE: Lamps operate at the following percentages of rated output in Emergency mode.

Lamp	AC Mode	Emergency Mode
13W	900	375
18W	1200	500
26W	1800	625
32W	2300	650
42W	3200	775

Note: Specifications and Dimensions subject to change without notice.

Visit our website at www.cooperlighting.com