











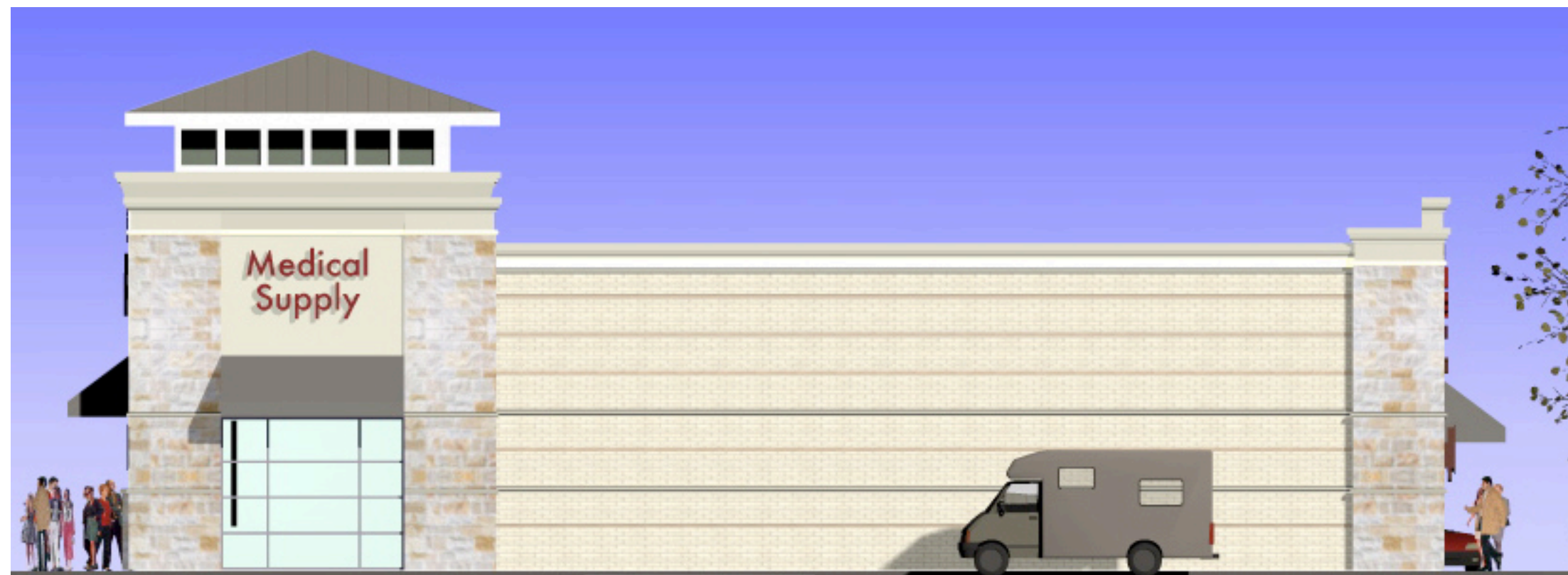
Front (West Elevation)



Rear (East Elevation)



Left (North Elevation)



Right (South Elevation)

	Material	Mfg	Color	01 West Elevation		02 North Elevation		03 East Elevation		04 South Elevation		Average
				Area (sf)	Percentage	Area (sf)	Percentage	Area (sf)	Percentage	Area (sf)	Percentage	
<b>Primary</b>	stone veneer	Custom Stone	Trinity Blend	489	20%	395	23%	1,107	39%	373	20%	26%
	Brick	Acme	Ridgemar/Driftwood	694	29%	962	56%	1,099	39%	1,109	60%	46%
	stucco	TEIFS	Autumn Gold	1,035	43%	185	11%	437	15%	185	10%	20%
<b>sub-total</b>					<b>92%</b>		<b>90%</b>		<b>93%</b>		<b>90%</b>	<b>91%</b>
<b>Secondary</b>	EIFS trim	TEIFS	Off White	192	8%	174	10%	192	7%	195	10%	9%
	<b>Totals</b>			<b>2,410</b>	<b>100%</b>	<b>1,716</b>	<b>100%</b>	<b>2,835</b>	<b>100%</b>	<b>1,862</b>	<b>100%</b>	<b>100%</b>
<b>Auxiliary Materials</b>	metal roof	Berridge	Champagne									
	awnings	Sunbrella	Toast 4628									
	storefront glazing	US Aluminum	Clear Anodized									
		PPG	Green Tint									

**General Notes:**

1. This Facade Plan is for conceptual purposes only. All building plans require review and approval by Development Services.
2. All mechanical units shall be screened from public view.
3. When permitted, exposed utility boxes and conduits shall be painted to match building.
4. All signage areas and locations are subject to approval by Development Services.
5. Roof access shall be provided internally from roof scuttle in Fire Riser Room.



Duane Meyers AIA  
 3481 FM 1844  
 Longview, TX 75605  
 936.663.6666

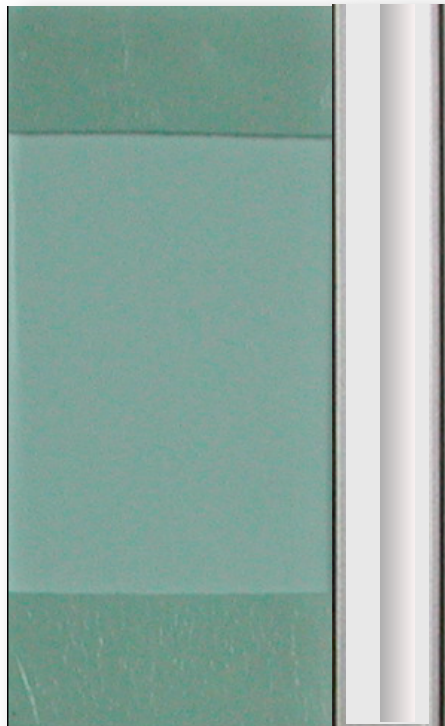
# Quail Run Medical Center

## Rockwall, Texas



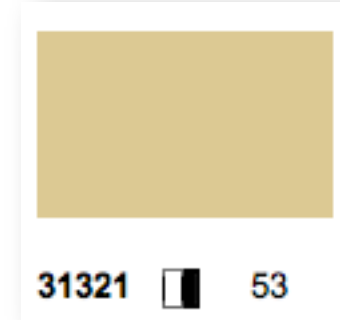


## Storefront System

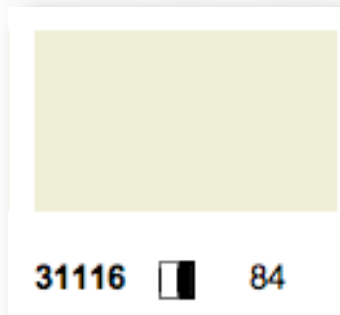


Clear Anodized Aluminum  
Green Tinted Glass per spec  
20% or less reflectivity

## Plaster Colors



Body Color  
STO One Coat Plaster Finish



Trim Color  
STO One Coat Plaster Finish

## Face Brick



Brick One (Main Body)  
Acme Ridgemar 31, smooth

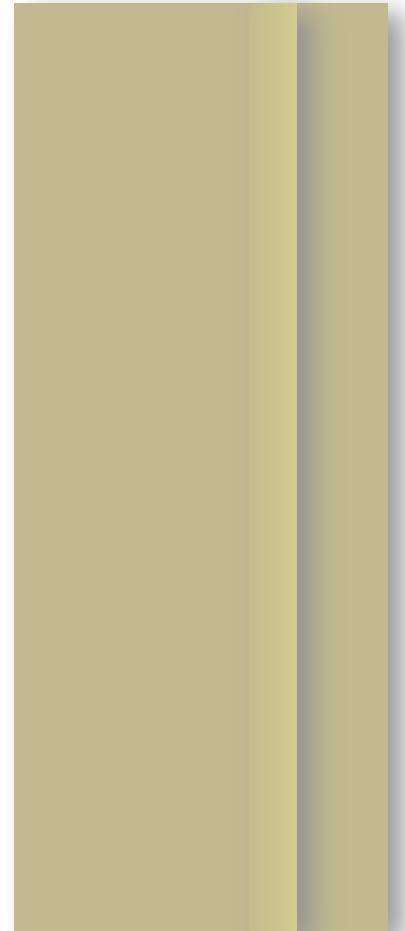
Brick Two (Recessed Course)  
Acme Driftwood, velour

## Stone Veneer



Custom Stone Supply  
Trinity Blend

## Metal Roof



Berridge Tee-Panel Roof  
"Champagne"

# Rockwall Medical Center Color Samples

SH 205 & Quail Run Road

20 Aug 2009

revised color samples

Duane Meyers AIA

3481 FM 1844  
Longview, TX 75605  
903.663.6666  
903.663.4643 fax

drmeyers@mac.com



Architect







QUAIL RUN RETAIL  
TREE LIST

No.	Description	Inches
2018	2-10 CEDAR ELM	15"
2019	2-6 CEDAR ELM	6"
2020	10' 2-15 CEDAR ELM	25"
2021	9 CEDAR ELM	9"
2022	12 CEDAR ELM	12"
2023	10 CEDAR ELM	10"
2024	20 PECAN	20"
2025	15 PECAN	15"
2026	15 PECAN	15"
2027	27 SYCAMORE	27"
2028	15 HACKBERRY	15"
2029	6 HACKBERRY	6"
2030	12 HACKBERRY	12"
2031	8 HACKBERRY	8"
2032	10 HACKBERRY	10"
2033	9 HACKBERRY	9"
2034	9 HACKBERRY	9"
2035	10 CEDAR ELM	10"
2036	8 HACKBERRY	8"
2037	12 HACKBERRY	12"
2038	10 HACKBERRY	10"
2041	6 HACKBERRY	6"
2042	6 BOIS D'ARC	6"
2064	6 HACKBERRY	6"
2065	6 HACKBERRY	6"
2067	6 HACKBERRY	6"
2068	6 HACKBERRY	6"
2069	6 HACKBERRY	6"
2070	6 HACKBERRY	6"
2071	18 HACKBERRY	18"
2072	8 HACKBERRY	8"
2073	8 HACKBERRY	8"
2074	3 HACKBERRY	3"
2273	30 PECAN	30"
2274	30 PECAN	30"
2275	20 PECAN	20"
2276	30 PECAN	30"
2277	2-18 PECAN	18"
2279	20 PECAN	20"
2280	8 HACKBERRY	8"
2283	8 BOIS D'ARC	8"
2284	20 CEDAR ELM	20"
2284	7 HACKBERRY	7"
2283	7 HACKBERRY	7"
2344	10 CEDAR ELM	10"
2345	12 CEDAR ELM	12"
2346	6 HACKBERRY	6"
2348	6 HACKBERRY	6"
2349	3-5 HACKBERRY	5"
2350	6 HACKBERRY	6"
2351	6 HACKBERRY	6"
2352	6 HACKBERRY	6"
2353	4-5 LOCUST	5"
2364	6 HACKBERRY	6"
2377	20 HACKBERRY	20"
2378	6 CEDAR ELM	6"
2379	2-6 CEDAR ELM	6"
2380	2-6 CEDAR ELM	6"
2381	8 HACKBERRY	8"
2382	8 HACKBERRY	8"
2391	3-5 CEDAR ELM	5"
2392	12 CEDAR ELM	12"
2393	15 PECAN	15"
2394	8 CEDAR ELM	8"
2396	10 BOIS D'ARC	10"
2397	2-8 BOIS D'ARC	8"
2398	6 CEDAR ELM	6"
2399	6 CEDAR ELM	6"
2400	10 CEDAR ELM	10"
2401	3-10 CEDAR ELM	10"
2402	20 HACKBERRY	20"
2403	6 HACKBERRY	6"
2404	10 HACKBERRY	10"
2405	2-10 HACKBERRY	10"
2406	2-6 HACKBERRY	6"
2407	8 COTTONWOOD	8"
2408	8 HACKBERRY	8"
2409	7 HACKBERRY	7"
2410	2-6 HACKBERRY	6"
2412	8 HACKBERRY	8"
2413	6 HACKBERRY	6"
2414	6 HACKBERRY	6"
2510	17 ELM	17"

TOTAL TREE INCHES 1,171

187.5 - CUS site

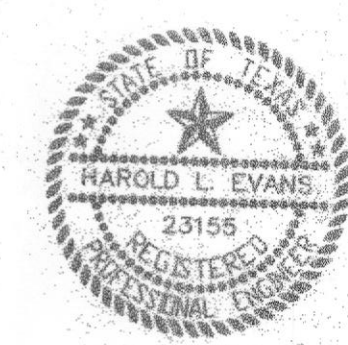
TREES IN QUAIL RUN R.O.W.

No.	Description	Inches
2043	8 HACKBERRY	8"
2044	15 HACKBERRY	15"
2045	12 HACKBERRY	12"
2046	15 HACKBERRY	15"
2047	24 HACKBERRY	24"
2048	6 HACKBERRY	6"
2049	6 HACKBERRY	6"
2050	15 HACKBERRY	15"
2051	8 HACKBERRY	8"
2052	6 HACKBERRY	6"
2053	20 HACKBERRY	20"
2054	10 HACKBERRY	10"
2055	8 HACKBERRY	8"
2056	18 HACKBERRY	18"
2389	3-8 CEDAR ELM	8"
2394	2-8 CEDAR ELM	8"
2395	5 CEDAR ELM	5"
2396	4-10 CEDAR ELM	10"
2397	5 CEDAR ELM	5"
2398	2-6 CEDAR ELM	6"
2399	8 CEDAR ELM	8"
2400	10 CEDAR ELM	10"
2401	15 ELM	15"
2542	8, 8, 5, 6 ELM (CLUSTER)	15"
2543	8 MULBERRY	8"

(156.5)

TREES IN HWY. 205 R.O.W.

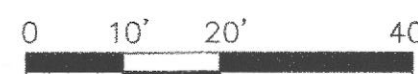
No.	Description	Inches
2354	4-12 HACKBERRY	12"
2355	12 HACKBERRY	12"
2356	8 HACKBERRY	8"
2357	8 HACKBERRY	8"
2358	15 HACKBERRY	15"
2359	12 HACKBERRY	12"
2360	8 HACKBERRY	8"
2361	12 CEDAR ELM	12"
2362	12 HACKBERRY	12"
2363	8 CEDAR ELM	8"
2365	8 HACKBERRY	8"
2366	10 HACKBERRY	10"
2367	12 HACKBERRY	12"
2368	20 HACKBERRY	20"
2369	28 BOIS D'ARC	28"
2370	7 HACKBERRY	7"
2371	10 HACKBERRY	10"
2372	8 WILLOW	8"
2373	18 HACKBERRY	18"
2374	4-8 HACKBERRY	8"
2375	2 8 HACKBERRY	8"



*H.L.E.*  
7/11

HAROLD L. EVANS CONSULTING ENGINEER P.O. BOX 28355 2391 CUS THOMASSON ROAD, SUITE 102 DALLAS, TEXAS 75228, (214) 328-8133		SHEET NO. 10A 10
REVISION DESCRIPTION 0020, RETAIL, RETREE		TREE SURVEY QUAIL RUN RETAIL CITY OF ROCKWALL
DATE 7/30/01	SCALE 1" = 100'	JOB NO. 0020
DESIGN H.L.E.	DRAWN	





1"=20'

ALL REQUIRED LANDSCAPE AREAS SHALL HAVE AUTOMATIC, UNDERGROUND IRRIGATION.

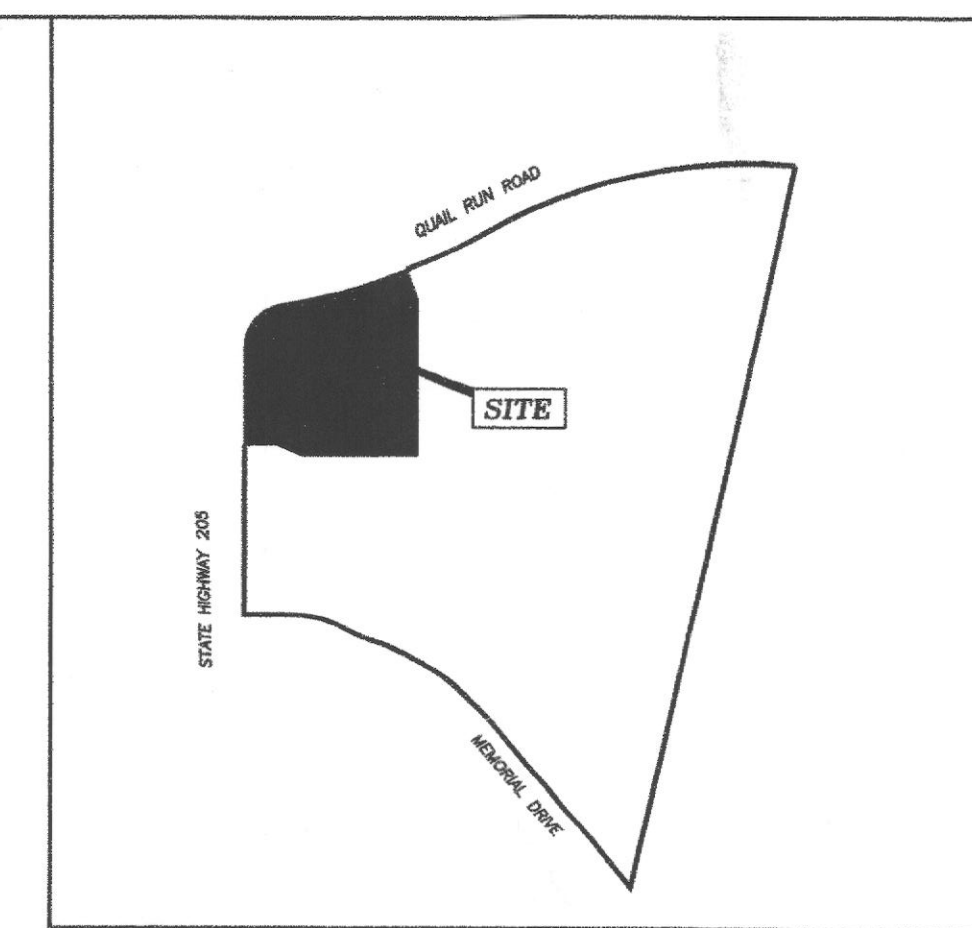
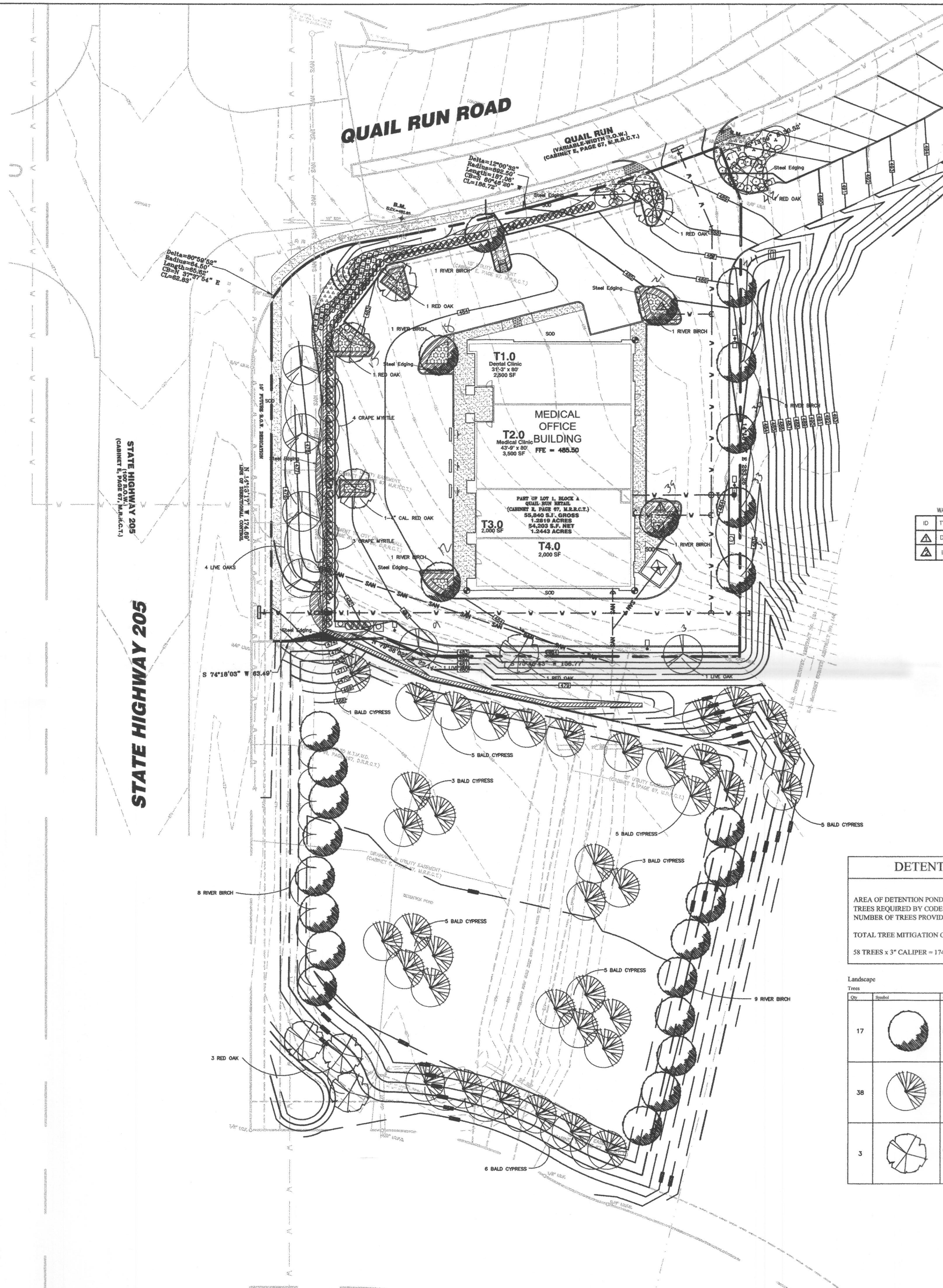
Qty	Symbol	Common Name	Plant Size	Notes
10		BIRCH RIVER	3" CAL	
6		OAK, LIVE	4" CAL	
6		OAK, RED AUTUMN GLORY	3" CAL	
13		GRAPE MYRTLE, TUSCARORA	8" HEIGHT	
106		HOLLY, BURFORD DWARF	5 GAL	3" SPACING
24		INDIA HAWTHORN, SNOW WHITE	5 GAL	3" SPACING
38		GRASS, MISCANTHUS ADIAGO	1 GAL	1" SPACING
845		IRIS, BUTTERFLY	1 GAL	9" SPACING
5910		LIRIOPE, GREEN	4" POT	6" SPACING
2194		SEASONAL COLOR COMMON BERMOUDA GRASS	4" POT	6" SPACING
		STEEL EDGING	1/8"	BETWEEN BEDS AND SOD AND DCG
		DECOMPOSED GRANITE	3" DEPTH	

LANDSCAPE CONTRACTOR SHALL VERIFY ALL PLANT QUANTITIES

**CITY LANDSCAPE TABULATIONS**

<b>HWY 205 REQUIREMENTS</b>	
3-4" TREE PER 100 LF - STATE HIGHWAY 205 FRONTAGE - 166 LF	5 TREES
BUFFER TREES REQUIRED (166 LF / 100) * 3 = 5	5 TREES
BUFFER TREES PROVIDED	5 TREES
ACCENT TREES REQUIRED	7 TREES
ACCENT TREES PROVIDED	7 TREES
REAR TREES REQUIREMENT	5 TREES
REAR TREES PROVIDED	5 TREES
<b>QUAIL RUN RD - 200 LF:</b>	
BUFFER TREES REQUIRED (200 LF / 50 = 4)	4 TREES
BUFFER TREES PROVIDED	4 TREES
<b>PARKING TREES</b>	
TOTAL PARKING SPACES	52 SPACES
PARKING TREES REQUIRED (52 SPACES / 10 = 5.2)	6 TREES
PARKING TREES PROVIDED	8 TREES
<b>TREE MITIGATION:</b>	
REAR TREE CREDIT	= 15"
PARKING LOT TREE CREDITS	= 26"
HWY 205 TREE CREDITS	= 20"
QUAIL RUN TREE CREDITS	= 12"
TOTAL TOWARDS TREE MITIGATION	= 73"

ALL REQUIRED LANDSCAPE AREAS SHALL HAVE AUTOMATIC, UNDERGROUND IRRIGATION.



**VICINITY MAP**  
N.T.S.

WAT	ID	TY
DC		DC
IR		IR

DETENTION POND LANDSCAPE	
AREA OF DETENTION POND	= 43,150 S.F.
TREES REQUIRED BY CODE (1/750 S.F.)	= 58 TREES REQUIRED
NUMBER OF TREES PROVIDED	= 58 TREES PROVIDED
TOTAL TREE MITIGATION CREDIT FOR POND:	
58 TREES x 3" CALIPER = 174 CALIPER INCHES	

Qty	Symbol	Common Name	Plant Size	Notes
17		BIRCH RIVER	3" CAL	
38		BALD CYPRESS	3" CAL	
3		OAK, RED AUTUMN GLORY	3" CAL	

LANDSCAPE DESIGNER

John R. Fossum  
713.545.5565 mobile  
817.337.1142 office

REVISIONS

NO.	DATE	BY	DESCRIPTION	CONST.
	05/15/09		ORIGINAL SUBMITTAL TO CITY	

DRAWING TITLE

**LANDSCAPE PLAN**

PROJECT NAME  
LOT 1, BLOCK A  
QUAIL RUN RETAIL  
ROCKWALL, TEXAS  
1.2443 ACRES - 54,203 S.F.

DATE 06/02/09	<b>MEDICAL CENTER</b> SEC of Quail Run Road and Highway 205	DRAWING NO.
DRAWN TJB		<b>L-1.0</b>
REVIEWED JF		
TBG PROJ 09013		



TEXAS EXCAVATION SAFETY SERVICES  
1-800-344-8377

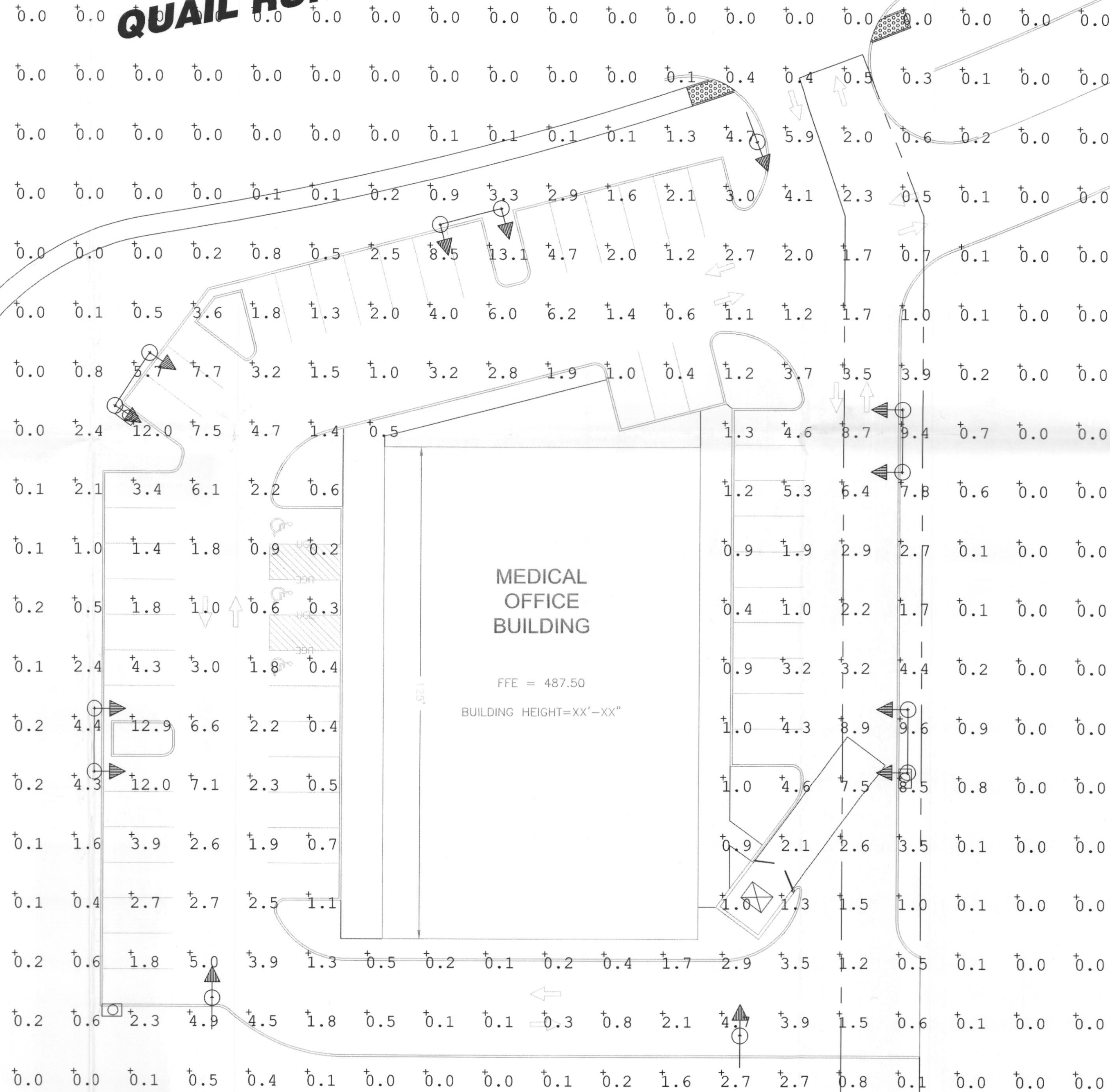


**REVISIONS**

REV #	DATE	BY:
1	5/13/09	J.P.

**STATE HIGHWAY 205**

**QUAIL RUN ROAD**



**WLS LIGHTING SYSTEMS**

**FV SERIES**

**VERTICAL LAMP / FLAT GLASS LENS**

**SPECIFICATIONS**

**REQUIREMENTS:** The FV Series luminaire is designed to provide a clean, clear appearance and uniform weather light distribution. Available in 2-pin Medium (medium mounting) and 4-pin Large (large mounting) and available in 17' and 20' pole heights.

**LENS/SHIELD:** A flat tempered glass lens is sealed to the housing with an OEM gasket, ensuring a long service life and is combined with the vertical lens fixture. The flat glass lens provides high performance lighting.

**TOP ACCESS:** Is provided by four captive stainless steel fasteners and provides ease of maintenance and cleaning.

**FINISHES:** Each fixture is finished with a solid color polyester powder coating process to give the light fixture a long-lasting appearance. Standard finish colors include: silver, white, black, and white. The polyester finish is resistant to corrosion and provides excellent UV protection.

**REFLECTOR/DISTRIBUTION PATTERNS:** The FV Series fixture is available in the following patterns and distribution patterns: all with vertical beam spread. Type III, Type III (S), Type IV (S), Type V (S), Type VI (S), Type VII (S), Type VIII (S), Type IX (S), Type X (S), Type XI (S), Type XII (S), Type XIII (S), Type XIV (S), Type XV (S), Type XVI (S), Type XVII (S).

**LIGHT OUTPUT:** Output depends on lamp type. See the following table for luminaire output.

Lamp Type	Power (W)	Beam Spread (ft)	Beam Spread (m)
17' Pole	150	17	5.18
17' Pole	250	17	5.18
20' Pole	150	20	6.10
20' Pole	250	20	6.10

**NOTES:** All dimensions are in feet unless otherwise noted. All dimensions are to the center of the fixture unless otherwise noted. All dimensions are to the center of the lens unless otherwise noted. All dimensions are to the center of the mounting hole unless otherwise noted. All dimensions are to the center of the mounting hole unless otherwise noted. All dimensions are to the center of the mounting hole unless otherwise noted.

**FVM  
FLAT LENS  
IESNA FULL CUTOFF**

**RECEIVED**  
MAY 18 2009  
By  
**FILE COPY**  
SP 2009 004

**Calculation Summary**

Label	Avg	Max	Min	Avg/Min	Max/Min
OVERALL SUMMARY	2.84	13.1	0.1	28.40	131.00

**Luminaire Schedule**

Symbol	Qty	Label	Lumens	LLF	Description
⬆	5	A	23500	0.800	WLS-FVM-FP-250-PSMH-FG 17' POLE 3' BASE
⬆	3	B	23500	0.800	WLS-FVM-FP-250-PSMH-FG 17' POLE 3' BASE

BASED ON THE INFORMATION PROVIDED, ALL DIMENSIONS AND LUMINAIRE LOCATIONS SHOWN REPRESENT RECOMMENDED POSITIONS. THE ENGINEER AND/OR ARCHITECT MUST DETERMINE APPLICABILITY OF THE LAYOUT TO EXISTING OR FUTURE FIELD CONDITIONS.

THIS LIGHTING PATTERN REPRESENTS ILLUMINATION LEVELS CALCULATED FROM LABORATORY DATA TAKEN UNDER CONTROLLED CONDITIONS UTILIZING CURRENT INDUSTRY STANDARD LAMP RATINGS IN ACCORDANCE WITH ILLUMINATING ENGINEERING SOCIETY APPROVED METHODS. ACTUAL PERFORMANCE OF ANY MANUFACTURER'S LUMINAIRE MAY VARY DUE TO VARIATION IN ELECTRICAL VOLTAGE, TOLERANCE IN LAMPS AND OTHER VARIABLE FIELD CONDITIONS.

**ROCKWALL MEDICAL CENTER  
ROCKWALL, TX**

PO BOX 100519  
FORT WORTH, TX 76185  
WWW.WSLIGHTING.COM

**WLS LIGHTING SYSTEMS**  
Consider the Impact!