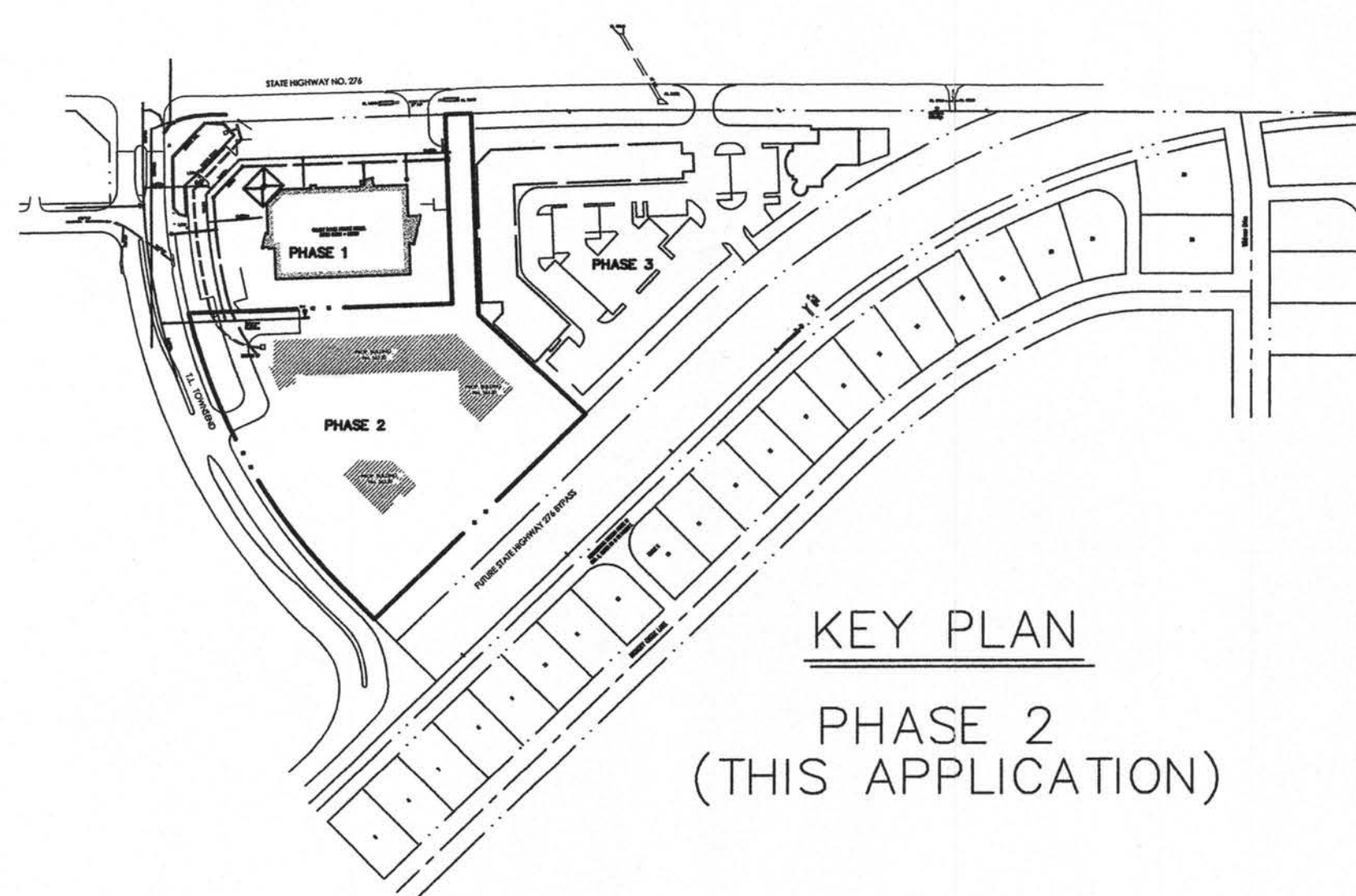
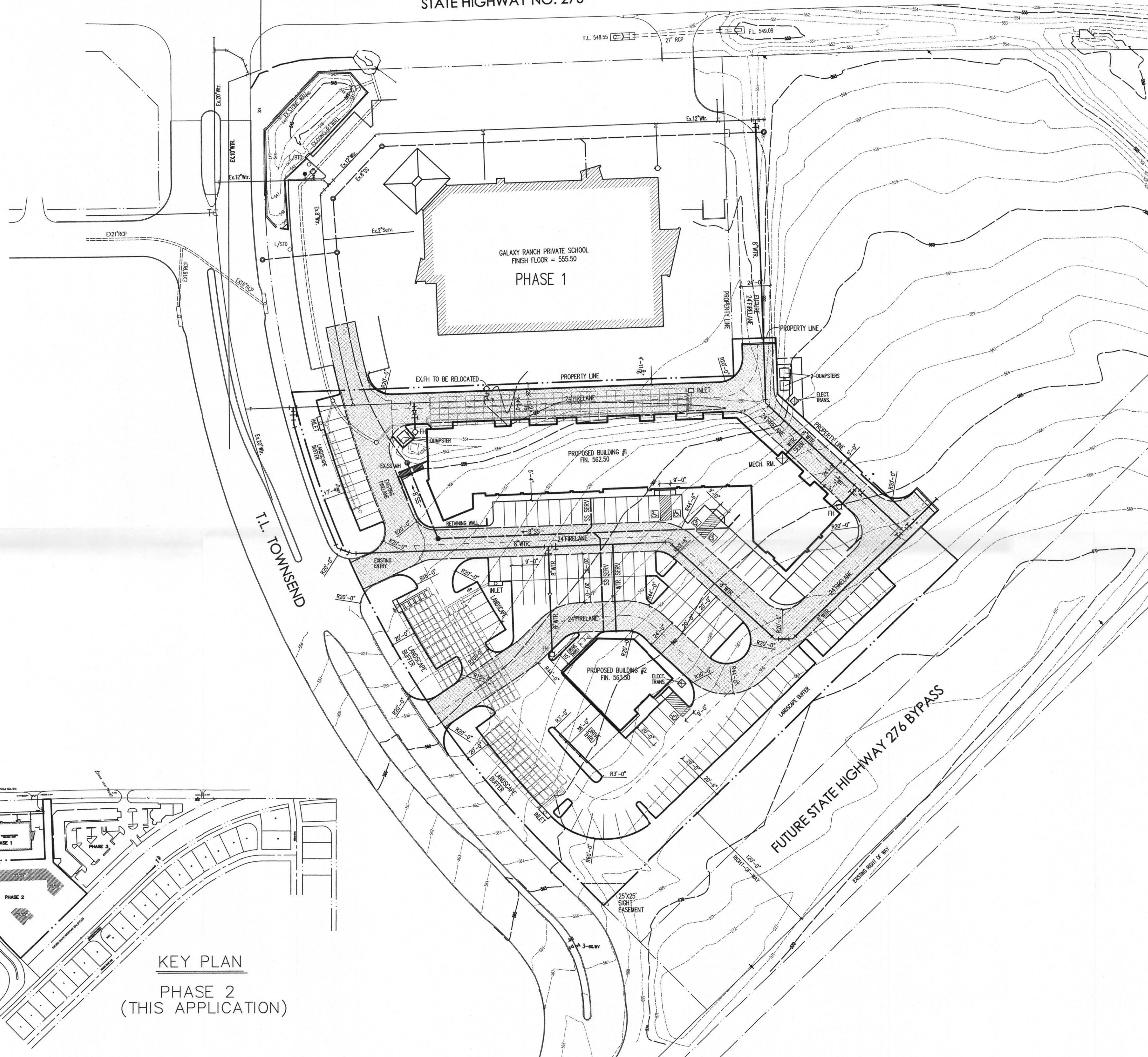
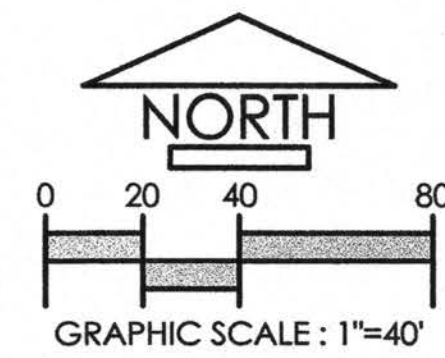


STATE HIGHWAY NO. 276



KEY PLAN
PHASE 2
(THIS APPLICATION)

SITE PLAN DATA		
LOT AREA:	3.154 AC.	137,385 SF.
BUILDING AREA		
-BUILDING 1	19,859 SF.	14.5%
-BUILDING 2	3,673 SF	2.7%
TOTAL LANDSCAPED AREA	23,117 SF	16.8%
IMPERVIOUS COVERAGE DRIVEWAYS AND PARKING	99,314 SF	72.2%
PARKING PROVIDED	146 CARS	
PARKING REQUIRED		
-RETAIL	102 CARS	
-RESTAURANT	30 CARS	
-TOTAL	132 CARS	

ST 2008 023



SITE PLAN
LARSEN RETAIL DEVELOPMENT
3.154 AC. TRACT
LARSEN SCHOOL ADDITION
ROCKWALL, ROCKWALL COUNTY, TEXAS

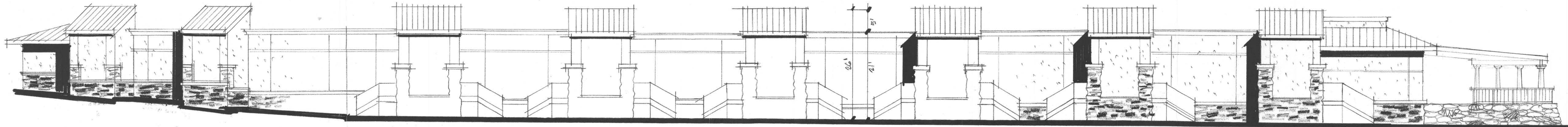
FILE COPY

OWNER:
BRAD LARSEN
BLUE IVEY SCHOOL
2101 NORTHEAST PARKWAY
GARLAND, TEXAS 75040
972-414-4639

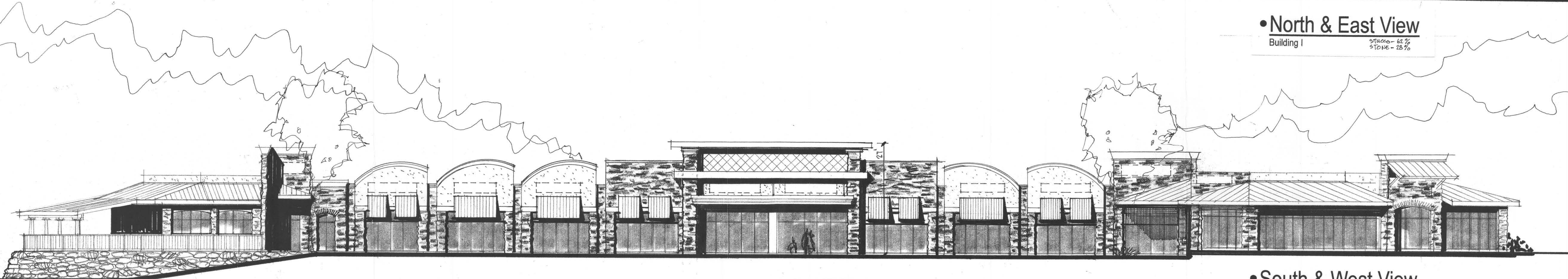
CIVIL ENGINEERS:
NATHAN D. MAIER CONSULTING ENGINEERS
MIKE DANIEL P.E.
JUAN GONZALEZ
8080 PARK LANE, #600
DALLAS, TEXAS 75231
214-739-4741

DESIGN CONSULTANTS:
ALLAN ROSS DESIGN GROUP
ALLAN ROSS
JAVIER SALAZAR R.A.
MIKE FISH
14902 PRESTON RD. #404-326
DALLAS, TEXAS 75254
214-316-9600

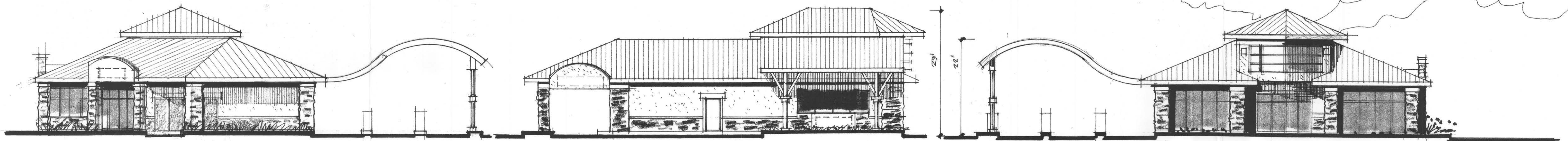
MEP ENGINEERS:
RADFORD ENGINEERING
GARY RADFORD P.E.
PO BOX 1552
RICHARDSON, TEXAS 75083
214-215-4437



• **North & East View**
 Building I
 STUCCO - 62%
 STONE - 28%



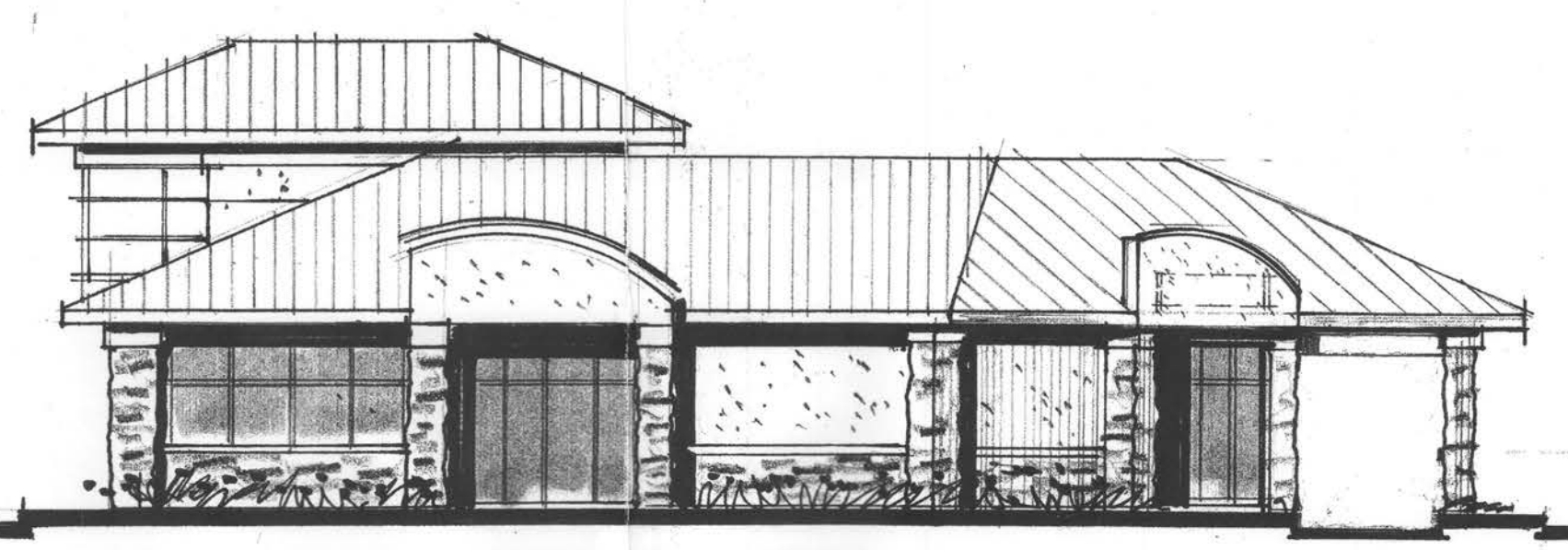
• **South & West View**
 Building I
 STONE - 74%
 STUCCO - 26%



• **North View**
 Building II
 STONE - 82%
 STUCCO - 48%

• **West View**
 Building II
 STONE - 46%
 STUCCO - 55%

• **South View**
 Building II
 STONE - 62%
 STUCCO - 38%



• **East View**
 Building II
 STONE - 45%
 STUCCO - 55%

Phase II:
 All exterior cladding and roofing materials and colors shall match Phase I, The Galaxy Ranch School.

• Elevations
LARSEN RETAIL DEVELOPMENT
 3.154 AC. TRACT
 LARSEN SCHOOL ADDITION
 ROCKWALL, ROCKWALL COUNTY, TEXAS

ALLAN ROSS DESIGN GROUP
 14902 PRESTON RD., # 404
 DALLAS TEXAS 75254

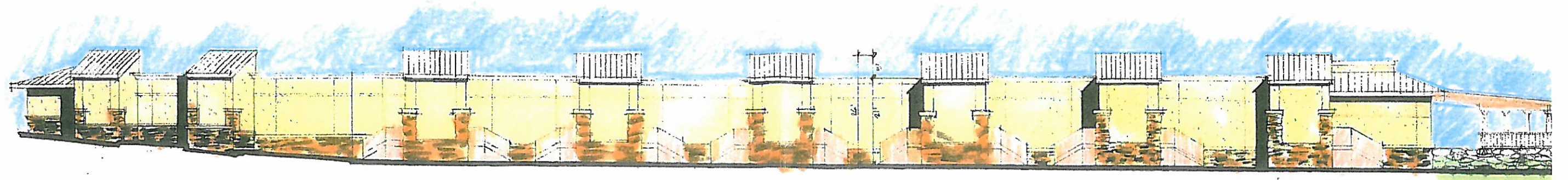
REV. 9-1-08

6.12.2008
 3/32" = 1'0"
 © 2008 Allan Ross

FILE COPY

2008 023





◦ **North & East View**
Building I



◦ **South & West View**
Building I



◦ **North View**
Building II

◦ **West View**
Building II

◦ **South View**
Building II



◦ **East View**
Building II

◦ **Elevations**

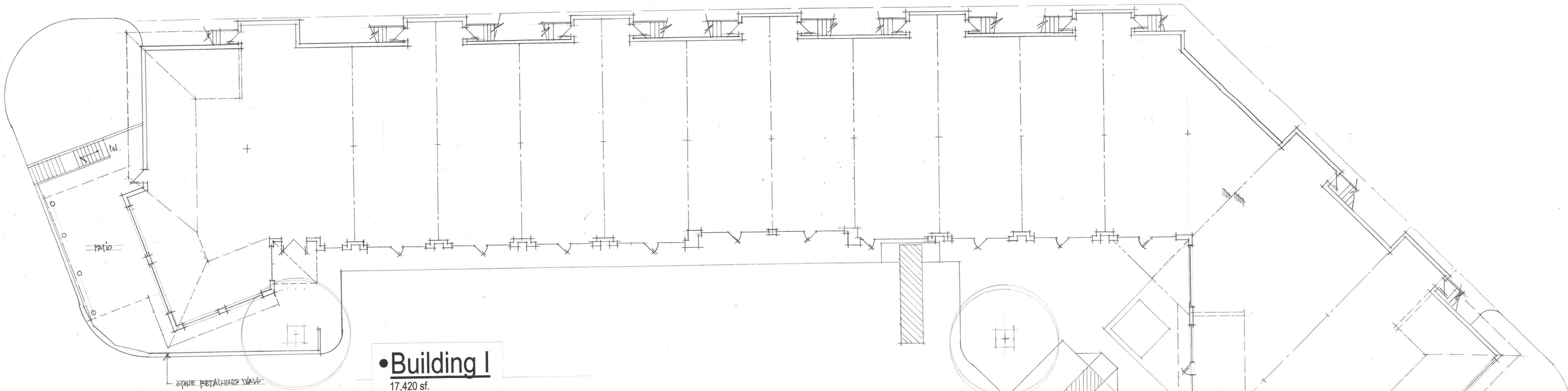
LARSEN RETAIL DEVELOPMENT

3349 AL TRACT
LARSEN SCHOOL ADDITION
ROCKWALL, ROCKWALL COUNTY, TEXAS

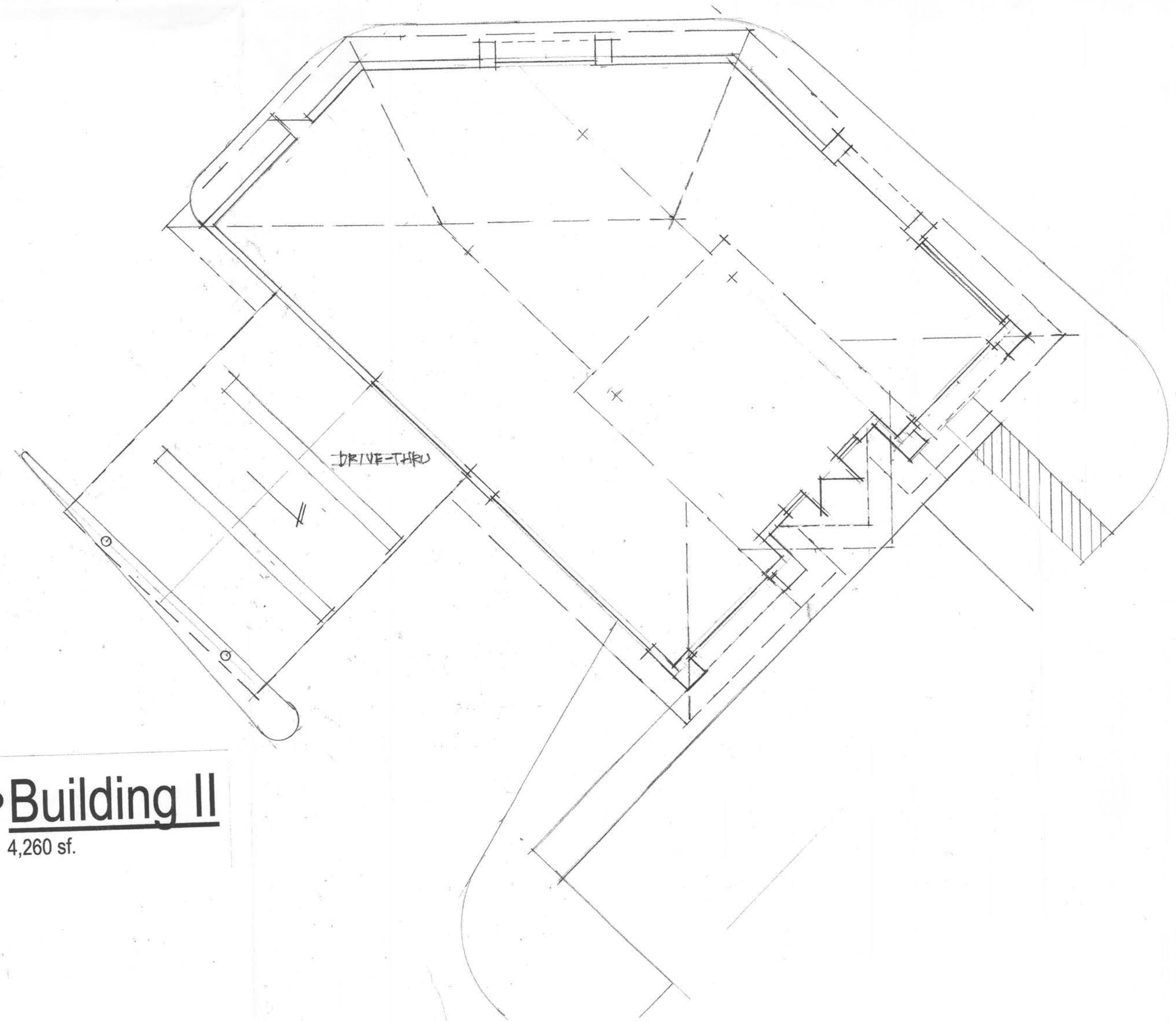
ALLAN ROSS DESIGN GROUP
1000 DUFFY DRIVE, SUITE 100
DALLAS, TEXAS 75243

Phase II:

All exterior cladding and roofing materials and colors shall match Phase I, The Galaxy Ranch School.



• **Building I**
17,420 sf.



• **Building II**
4,260 sf.

• **Floor Plans**
LARSEN RETAIL DEVELOPMENT

3,339 AC. TRACT
LARSEN SCHOOL ADDITION
ROCKWALL, ROCKWALL COUNTY, TEXAS

ALLAN ROSS DESIGN GROUP
14902 PRESTON RD., # 404
DALLAS TEXAS 75254

6.12.2008
3/32" = 1'0"
© 2008 Allan Ross

LARSEN RETAIL DEVELOPMENT
 3.154 AC. TRACT
 LARSEN SCHOOL ADDITION
 ROCKWALL, ROCKWALL COUNTY, TEXAS

OWNER:

BRAD LARSEN
 BLUE IVEY SCHOOL
 2101 NORTHEAST PARKWAY
 GARLAND, TEXAS 75040
 972-414-4839

DESIGN CONSULTANTS:

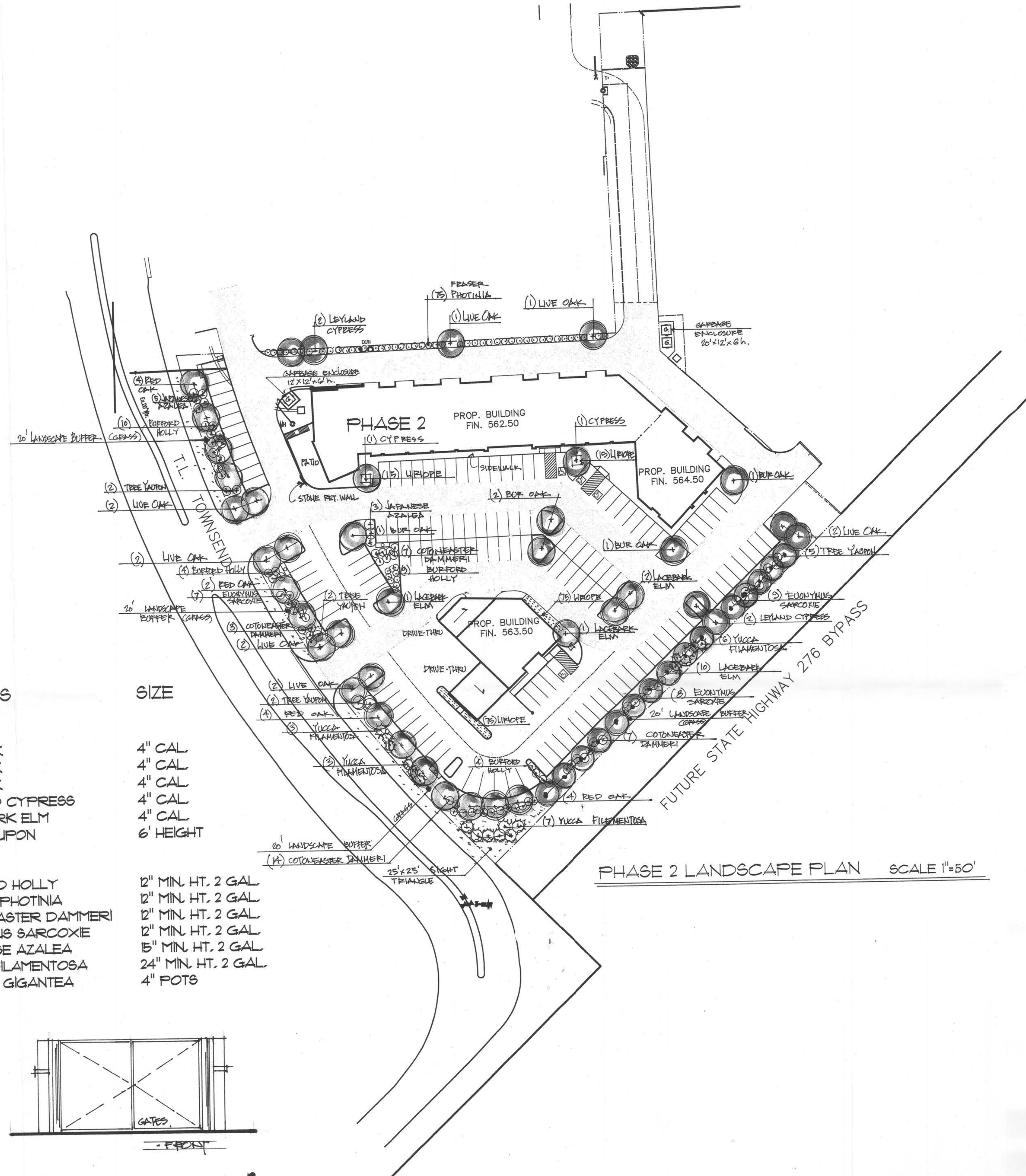
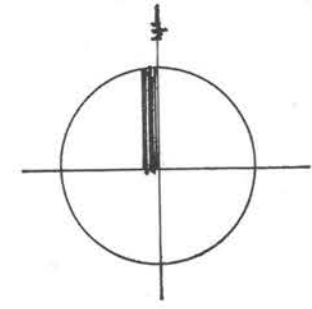
ALLAN ROSS DESIGN GROUP
 ALLAN ROSS
 JAYIER SALAZAR R.A.
 MIKE FISH
 14902 PRESTON RD. #404-326
 DALLAS, TEXAS 75254
 214-316-9600

CIVIL ENGINEERS:

NATHAN D. MAIER CONSULTING ENGINEERS
 MIKE DANIEL P.E.
 JUAN GONZALEZ
 8080 PARK LANE, #600
 DALLAS, TEXAS 75231
 214-739-4741

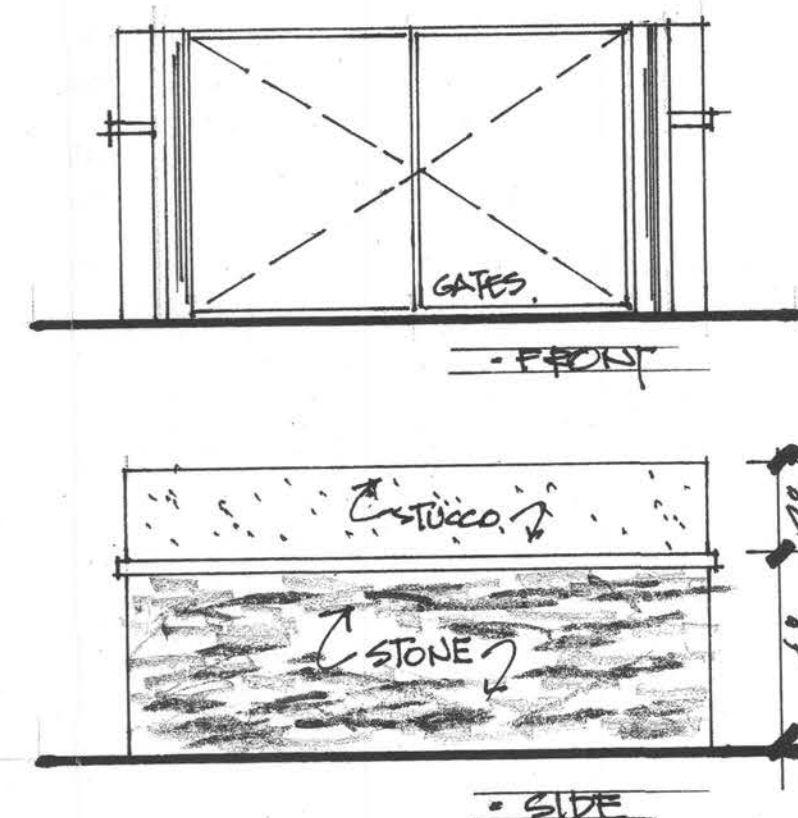
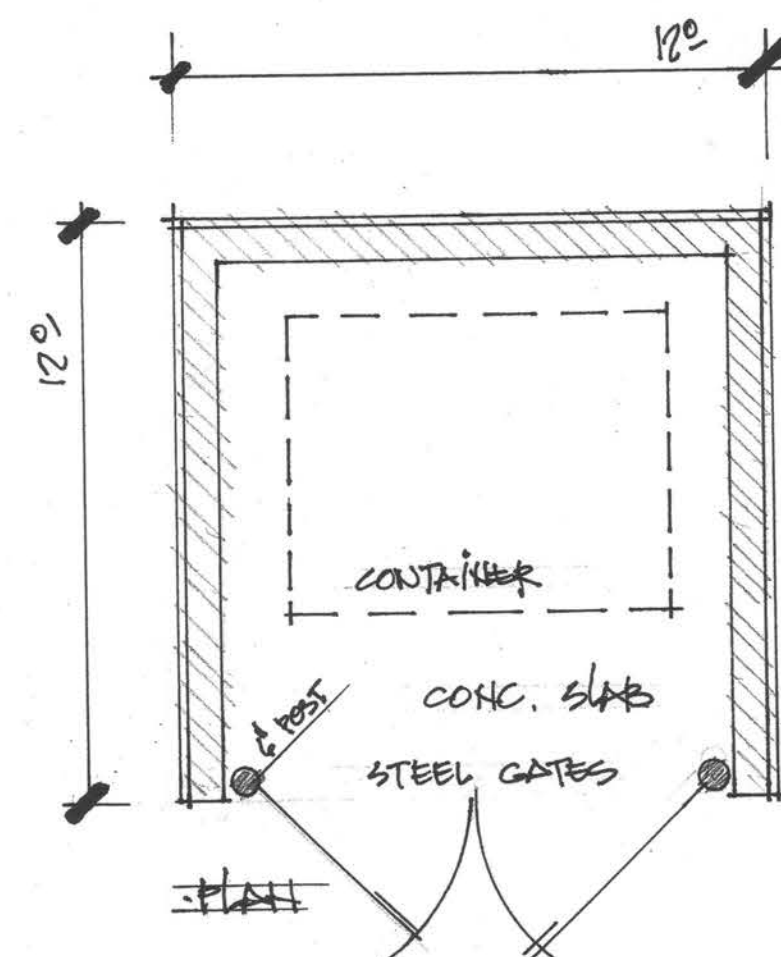
MEP ENGINEERS:

RADFORD ENGINEERING
 GARY RADFORD P.E.
 PO BOX 1552
 RICHARDSON, TEXAS 75083
 214-215-4437



PLANT LIST

QUANTITY	SPECIES	SIZE
TREES		
14	RED OAK	4" CAL
12	LIVE OAK	4" CAL
5	BUR OAK	4" CAL
6	LEYLAND CYPRESS	4" CAL
15	LACEBARK ELM	4" CAL
11	TREE YAUPON	6' HEIGHT
SHRUBS		
27	BURFORD HOLLY	12" MIN. HT. 2 GAL
15	FRASER PHOTINIA	12" MIN. HT. 2 GAL
31	COTONEASTER DAMMERI	12" MIN. HT. 2 GAL
24	EUONYMUS SARCOXIE	12" MIN. HT. 2 GAL
8	JAPANESE AZALEA	15" MIN. HT. 2 GAL
19	YUCCA FILAMENTOSA	24" MIN. HT. 2 GAL
180	LIRIOPE GIGANTEA	4" POTS



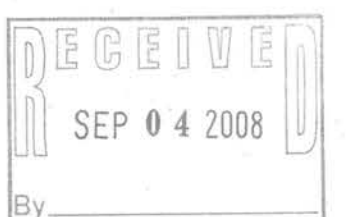
•GARBAGE ENCLOSURE

Notes:

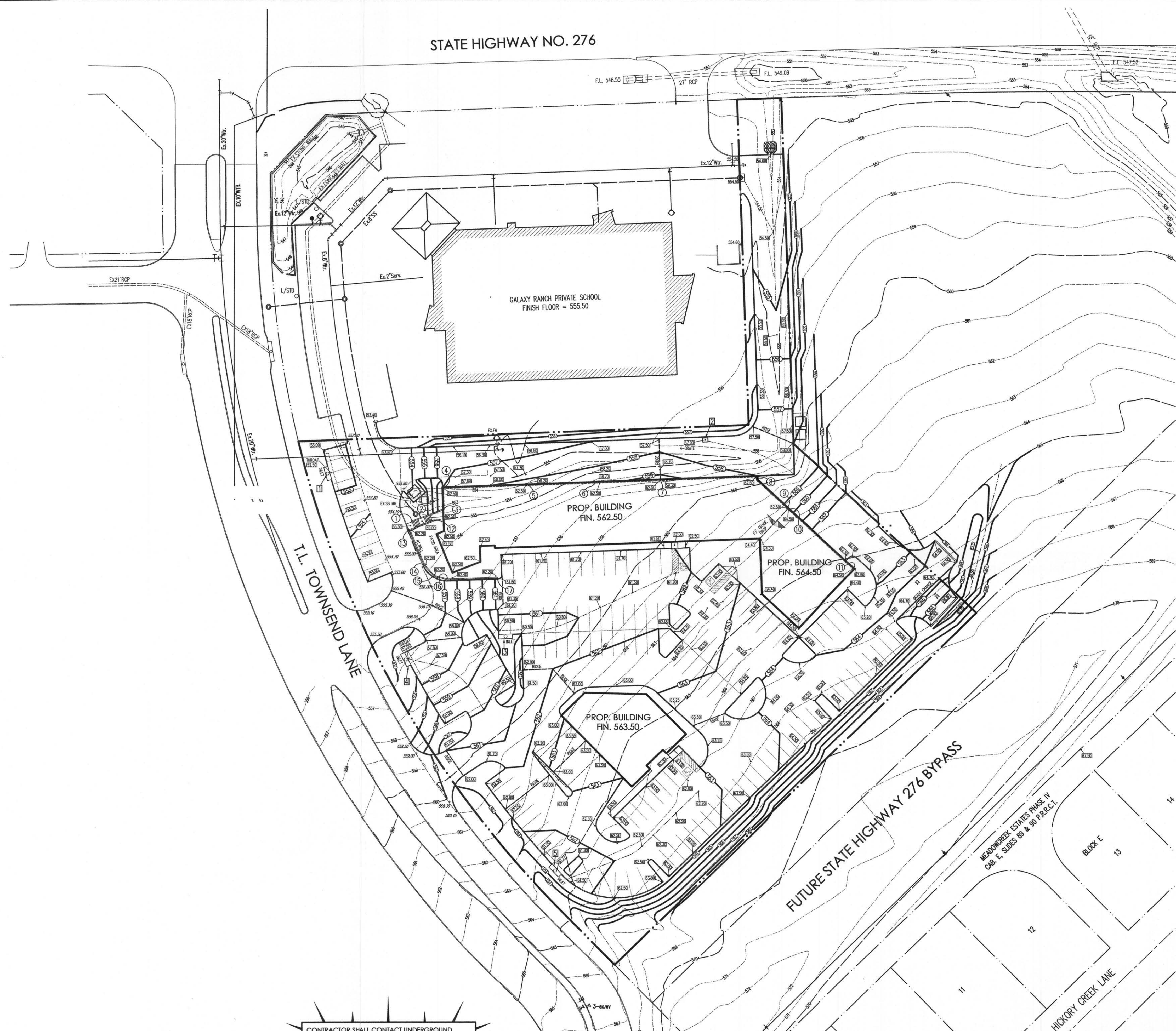
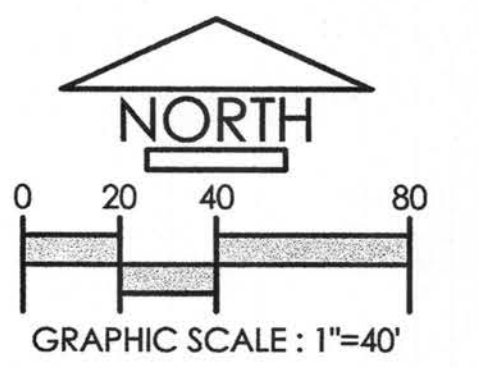
- 1) There is no existing vegetation on this site.
- 2) All trees must be planted 5' min. from water, sewer and storm sewer lines.
- 3) All shrubs must be planted min. 2' from any parking curbs.
- 4) All accent trees planted along future SH276 must be 8' high min.

FILE COPY

S/2008 023



STATE HIGHWAY NO. 276



GRADING PLAN NOTES

- 4:1 SLOPE. ALL SLOPES SHALL BE CONSTRUCTED 4H:1V OR FLATTER IN AREAS OF CUT OR FILL.
- PRIOR TO CONSTRUCTION, THE CONTRACTOR SHALL OBTAIN A GRADING PERMIT FROM THE CITY OF ROCKWALL AND PARTICIPATE IN A PUBLIC WORKS PRE-CONSTRUCTION MEETING PRIOR TO MOBILIZATION AND CONSTRUCTION.
- COMPLETE FILL OPERATIONS. THE CONTRACTOR SHALL COMPLETE FILL OPERATIONS PRIOR TO INSTALLING ANY UTILITIES (I.E., WATER, SEWER, STORM WATER). AFTER FILL OPERATIONS ARE COMPLETED, THE CONTRACTOR SHALL EXCAVATE THE UTILITY TRENCH, INSTALL UTILITIES, COMPACT THE TRENCH AND ENSURE ALL PUBLIC WORKS INSPECTIONS ARE PROPERLY PERFORMED.
- CONTRACTOR TO FOLLOW RECOMMENDATIONS AND PROCEDURES NOTED IN THE GEOTECHNICAL ENGINEERING STUDY.

STUDY PREPARED BY:
 CTL THOMPSON TEXAS, LLC.
 10575 NEWKIRK STREET, SUITE 780
 DALLAS, TEXAS 75220
 TELE.: 972.831.1111
 FAX.: 972.831.0800

JOB NO. DA5872
 DATED: DECEMBER 08, 2003

DRAINAGE INLET INFORMATION						
INLET #	SIZE OF OPENING	TYPE	TOP OF INLET ELEV.	THROAT ELEV.	TOP OF GRATE ELEV.	FLOWLINE
1	10'	CURB	553.33	552.50	---	549.33
2	3.1875' x 5.1874'	4-GRATE	---	---	557.00	553.00
3	10'	CURB	561.00	560.17	---	557.00
4	10'	CURB	557.83	57.00	---	553.83
5	10'	CURB	562.00	561.17	---	558.00

RETAINING WALL INFORMATION					
#	TOP OF WALL	BOTTOM OF WALL @ P.V.M.T.	TOP OF GRADEBEAM / RET. WALL	BOTTOM OF GRADEBEAM / RET. WALL @ P.V.M.T.	HEIGHT
1	555.50	555.50	---	---	0.00
2	559.00	555.50	---	---	3.50
3	562.50	558.00	562.50	---	4.50
4	---	---	562.50	557.00	5.50
5	---	---	562.50	558.20	4.30
6	---	---	562.50	558.70	3.80
7	---	---	562.50	559.30	3.20
8	---	---	562.50	558.00	4.50
9	---	---	562.50	559.50	3.00
10	---	---	564.50	559.50	5.00
11	---	---	564.50	563.50	1.00
12	562.50	562.50	---	---	0.00
13	562.20	555.50	---	---	6.70
14	562.20	555.50	---	---	6.70
15	562.20	555.40	---	---	6.80
16	562.30	557.40	---	---	4.90
17	562.20	562.20	---	---	0.00

- GRADING LEGEND**
- 555--- EXISTING CONTOUR
 - 55--- PROPOSED CONTOUR
 - 55.50--- PROPOSED GUTTER SHOT
 - +555.50 EXISTING SPOT ELEVATION
 - 5 EXISTING INLET INFORMATION
 - 5 RETAINING WALL / GRADE BEAM INFORMATION
 - FLOW ARROW
 - RIDGE

CONTRACTOR SHALL CONTACT UNDERGROUND UTILITY LOCATOR SERVICE NO EARLIER THAN 14 DAYS AND NO LATER 48 HOURS PRIOR TO ANY EXCAVATION EXCEEDING A DEPTH OF 16 INCHES
 1-800-DIG-TESS

SITE BENCHMARK:
 CUT "X" ON TOP OF NORTH CURBLINE OF EXISTING CONCRETE DRIVE APPROX. 45 FEET SOUTH OF SOUTH BUILDING WALL OF GALAXY RANCH PRIVATE SCHOOL AND 148 FEET +/- EAST OF EXISTING EAST CURBLINE OF T.L. TOWNSEND LANE.
 ELEVATION = 554.56

THIS DOCUMENT IS RELEASED FOR THE PURPOSE OF INTERIM REVIEW UNDER THE AUTHORITY OF C. MICHAEL DANIEL TX. P.E. NO. 62457. IT IS NOT TO BE USED FOR CONSTRUCTION OR PERMIT PURPOSES

REVISIONS	DATE

NDM
 NATHAN D. MAIER
 CONSULTING ENGINEERS, INC.
 Two Northpark 8080 Park Lane Suite 600
 Dallas, Texas 75231 214.739.4741

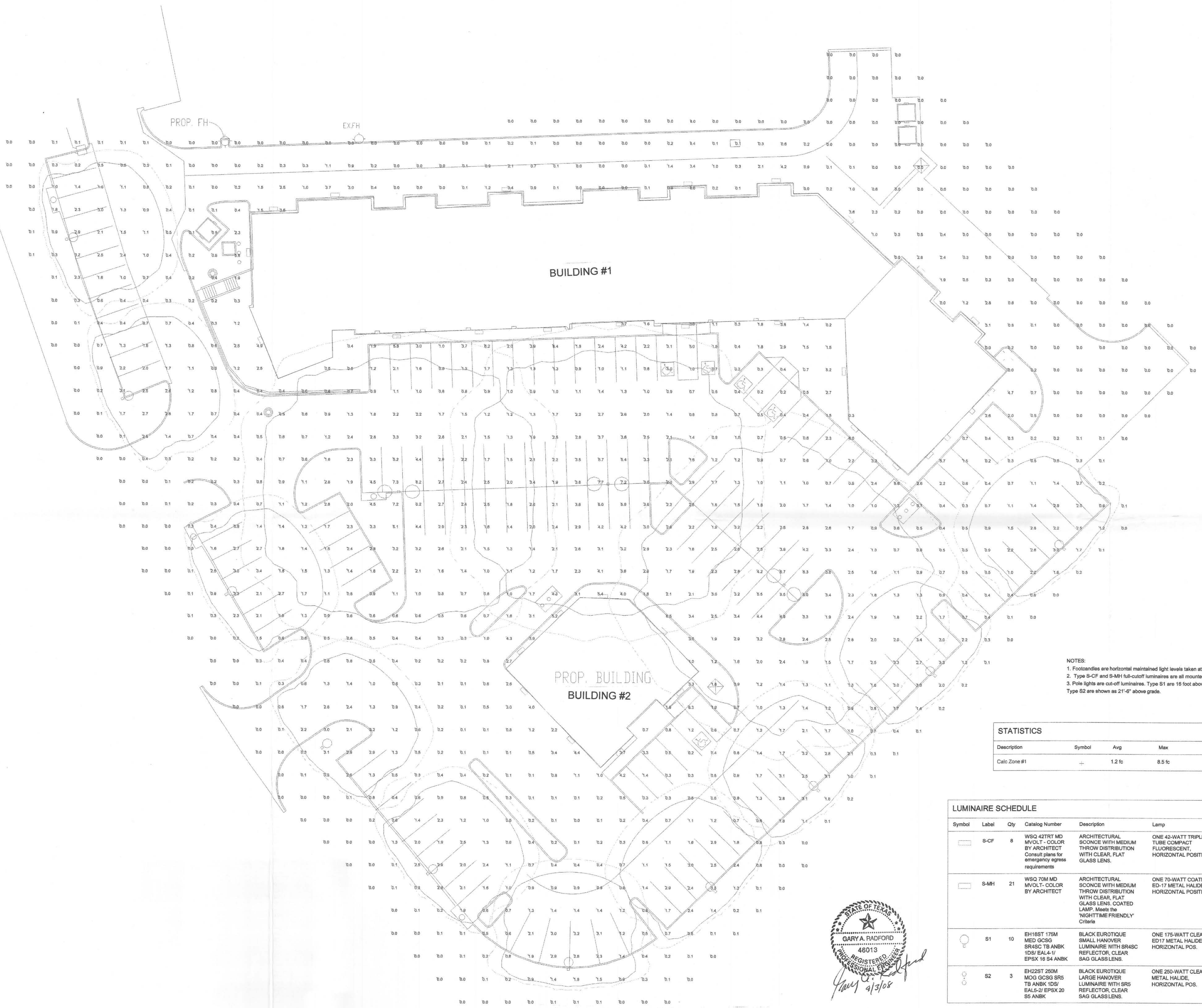
GRADING PLAN
 LARSEN RETAIL DEVELOPMENT
 3.339 ACRE TRACT - LARSEN SCHOOL ADDITION
 ROCKWALL, ROCKWALL COUNTY, TEXAS

DESIGN	DRAWN	SCALE	DATE	NOTES
NDMCE	NDMCE	1"=40'	2008-05-16	

SHEET NO.
 X
 10
 JOB NUMBER
 08-04-038-A

ENGINEER:
 NATHAN D. MAIER CONSULTING ENGINEERS, INC.
 CONTACT: MIKE DANIEL (214)739-4741

2008 023
 RECEIVED
 JUN 16 2008
 By



NOTES:
 1. Footcandles are horizontal maintained light levels taken at grade level.
 2. Type S-CF and S-MH full-cutoff luminaires are all mounted at 12 foot above grade.
 3. Pole lights are cut-off luminaires. Type S1 are 16 foot above finished grade.
 Type S2 are shown as 21'-6" above grade.

Description	Symbol	Avg	Max	Min	Max/Min	Avg/Min
Calc Zone #1	+	1.2 fc	8.5 fc	0.0 fc	N/A	N/A

Symbol	Label	Qty	Catalog Number	Description	Lamp	File	Lumens	LLF	Watts
☐	S-CF	6	WSO 42TRT MD MVOLT - COLOR BY ARCHITECT	ARCHITECTURAL SCENCE WITH MEDIUM THROW DISTRIBUTION WITH CLEAR, FLAT GLASS LENS.	ONE 42-WATT TRIPLE TUBE COMPACT FLUORESCENT, HORIZONTAL POSITION.	L011979.ies	3200	0.81	48
☐	S-MH	21	WSO 70M MD MVOLT - COLOR BY ARCHITECT	ARCHITECTURAL SCENCE WITH MEDIUM THROW DISTRIBUTION WITH CLEAR, FLAT GLASS LENS. COATED LAMP. Meets the 'NIGHTTIME FRIENDLY' Criteria	ONE 70-WATT COATED ED-17 METAL HALIDE, HORIZONTAL POSITION.	L011541B.ies	4700	0.72	95
⦿	S1	10	EH16ST 175M MED GCSSG SR4SC TB ANBK 1DS/ EAL4-1/ EP5X 16 S4 ANBK	BLACK EUROTIQUE SMALL HANOVER LUMINAIRE WITH SR4SC REFLECTOR, CLEAR SAG GLASS LENS.	ONE 175-WATT CLEAR ED-17 METAL HALIDE, HORIZONTAL POS.	L010243H.ies	12800	0.72	213.6
⦿	S2	3	EH22ST 250M MOG GCSSG SR5 TB ANBK 1DS/ EAL5-2 EP5X 20 S5 ANBK	BLACK EUROTIQUE LARGE HANOVER LUMINAIRE WITH SR5 REFLECTOR, CLEAR SAG GLASS LENS.	ONE 250-WATT CLEAR METAL HALIDE, HORIZONTAL POS.	L010224H.ies	20500	0.72	8



SITE PLAN—PHOTOMETRIC ANALYSIS
 SCALE: 1" = 20'-0"

Radford Engineering Co.
 Mechanical & Electrical Engineering Consultants
 PO Box 1552 Richardson, TX 75083
 Tel: 214-215-4437

LARSEN RETAIL DEVELOPMENT
 3.339 Ac Tract
 Larsen School Addition
 Rockwall, Texas

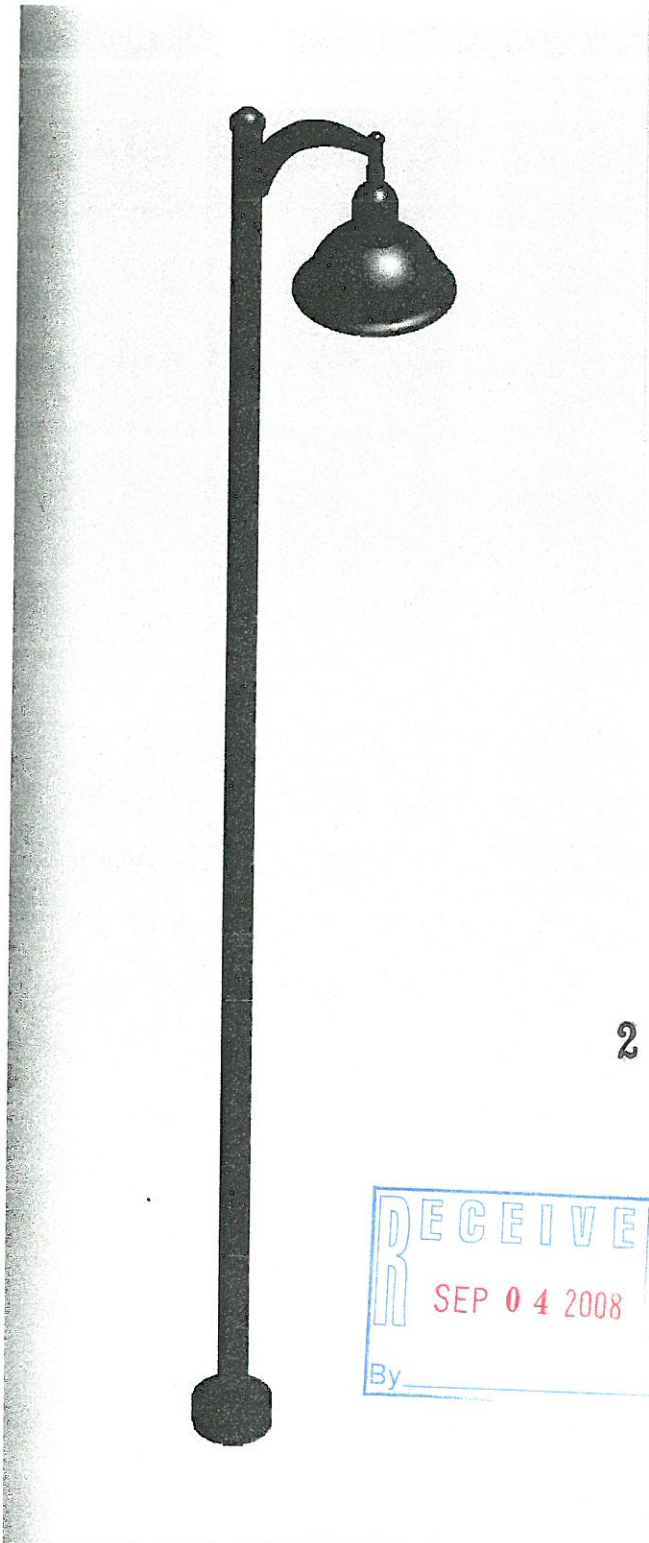
SFP 2008 023



FILE COPY

Designer
RADFORD ENGINEERING
 Date
 Aug 28 2008
 Scale
 as shown
 Drawing No.
LA-1

Hanover Series Small Luminaire

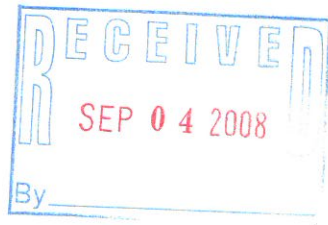


Features of Steel Posts

- Steel allows for taller pole heights
- Steel is stronger and more durable

- 16'-0" tall steel poles # EPSX 16 S4 ANBK
- EAL4 Aluminum Arm # EAL4/1 ANBK
- Hanover Series Small Luminaire # EH16RT 175M MED GCSG SR4SC TB1 1DS ANBK
- Black, polyester powder coat # ANBK
- 17'-11.5" overall lighting post height

2008 023



FILE COPY



Catalog Number: EPSX 16 S4 ANBK EAL4/1 ANBK EH16RT 175M MED GCSG SR4SC TB1 1DS ANBK	
Notes	Type

SPECIFICATIONS

POST

- Eurotique Series Steel Pole, 4" diameter, 10.5" diameter Base
- 16'-0" post height
 - #EPSX 16 S4 ANBK

ARM

- EAL4 Aluminum Arm
- mounts to 3-3/8" post tenon
 - #EAL4/1 ANBK

LUMINAIRE

- Hanover Series Small Luminaire, 16" wide x 18.5" high with Clear Glass Sag Globe
- Star Nights: Cut-off
 - #EH16RT 175M MED GCSG SR4SC TB1 1DS ANBK

ACCESSORIES

None.

INSTALLATION

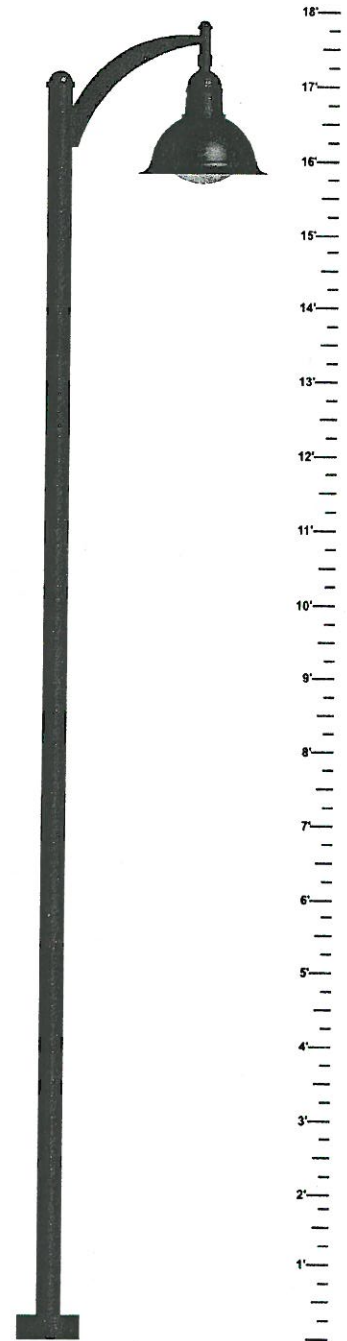
The top of the luminaire mounts to a Eurotique arm plumbmizer. A handhole with cover is provided in the lower shaft for wiring access. A two-piece aluminum cover conceals the pole anchor bolts. The arm slip-fits the post tenon with stainless steel socket set screws.

- 7" Ø bolt circle.
- 0.75" x 18" L-type, hot-dip galvanized anchor bolts. 36000 psi.

FINISH

- All metal parts are finished with a Black polyester powder coat
- #ANBK

Hanover Series
Small Luminaire
Eurotique Steel Pole
EAL4 Series Arm



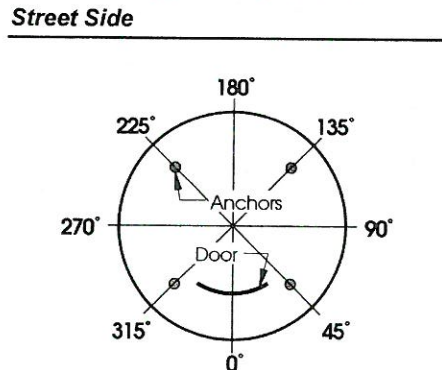
Dimensions

- Light Center Height: 16'-2.5"
- Overall Post Height: 17'-11.5"

Wind Loads

Windloading for this post and accessories has been checked for the 70 mph winds where the post will be installed and has passed.

Anchorage/Orientation Plan



Customer Approval: _____

Job Name: _____

Client Name: _____

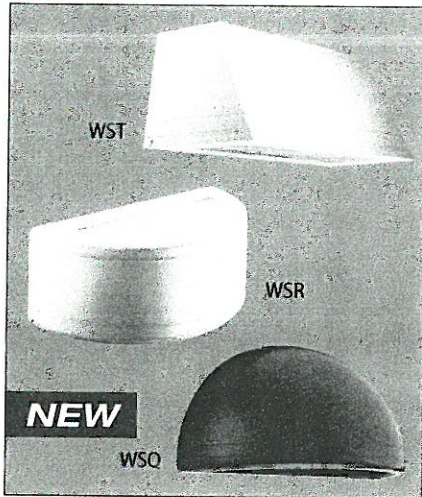
signature _____ date _____

Created By: Bryan Johnson

Date: 12-Jun-08

Architectural

WST/WSR/ WSQ



Intended Use

For building- and wall-mounted applications.

Features

Housing – Rugged, die-cast, single-piece housing. Die-cast door frame has 1/8" thick tempered glass lens. Door frame is fully gasketed with one-piece solid silicone. Standard finish is textured dark bronze (DDBT) corrosion-resistant polyester powder with other architectural colors available.

Optics – Interchangeable, segmented reflectors for superior uniformity and control. Three full cutoff distributions available: FT (forward throw), MD (medium throw) and WT (wide throw). Four uplight distributions available in WSR only: FTU (forward throw, 10% up), MDU (medium throw, 10% up), WTU (wide throw, 10% up) and MDU5 (up/down, medium throw, 50% up, 50% down). Compact fluorescent MD (medium throw) only.

Electrical – HID: 50W MH-150W utilizes a high reactance, high-power factor ballast. 35S and 50S utilizes a reactor normal-power factor ballast. 175W utilizes a constant-wattage auto

transformer ballast. Quick-disconnect plug easily disconnects reflector from ballast. Ballasts are copper wound and 100% factory tested. CFL: compact fluorescent ballast is Class P, electronic, high-power factor, <10% THD with starting temp. of 0° F (-18°C).

Socket - HID is porcelain, medium-base copper alloy, nickel-plated screw shell and center contact. (UL Listed 660W, 600V 4KV pulse rated). Fluorescent socket is high-temperature thermoplastic with integral lamp retention clip.

Installation – Universal mounting mechanism with integral mounting support allows fixture to hinge down. Bubble level provides correct alignment with each installation.

Listings

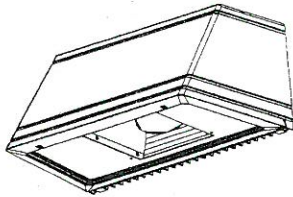
UL Listed suitable for wet locations (damp location listed in lens-up orientation). CSA Certified (see Options). IP65 rated.

Ordering Information

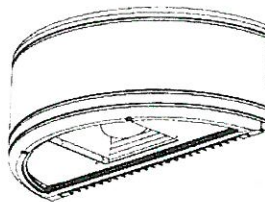
Example: **WST 175M FT 120 SF LPI**

Series	Wattage	Distribution	Voltage	Installed	Options/accessories
WST Trapezoid	<u>High pressure sodium</u>	<u>Downlight distribution</u>	120	SF Single fuse, 120V, 277V, 347V (n/a TB or TBV)	CR Non-stick protective coating ¹⁴
WSR Halfround	35S¹	FT Forward throw	208⁴	DF Double fuse, 208V, 240V (n/a TB or TBV)	PE Photoelectric cell-button type (n/a TB or TBV) ¹⁶
WSQ Quarter sphere	50S	MD Medium throw (coated lamp standard)	240⁴	GMF Internal slow-blow fusing ^{8,9}	WLU Wet location door for up orientation
	70S	WT Wide throw	277	EC Emergency circuit (25W max., lamp included)	IBS Internal backlight shield ¹⁶
	100S	<u>Uplight distribution³</u>	347	DC12 Emergency circuit 12 volt (35W lamp included standard) ¹⁰	DFL Diffusing lens
	150S	FTU Forward throw with 10% uplight	TB⁵	2DC12 Emergency circuit 12 volt ((2) 35W lamps included standard) ¹⁰	LPI Lamp included
	<u>Metal halide</u>	MDU Medium throw with 10% uplight (coated lamp standard)	TB⁶	DC2012 Emergency circuit 12 volt (20W lamp included standard) ¹⁰	L/LP Less lamp
	50M	WTU Wide throw with 10% uplight	MVOLT⁷	2DC2012 Emergency circuit 12 volt ((2) 20W lamps included standard) ¹⁰	UCS Uplight component shield ¹⁷
	70M	MDU5 Up/down medium throw with 50% uplight & 50% downlight (coated lamp standard)		ELD Emergency battery pack (120V or 277V only) ^{8,11}	CSA CSA Certified
	100M			ELDWR Remote battery pack ready (by others) for compact fluorescent lamps ¹²	<i>Architectural colors¹⁸</i>
	150M			ELDWC Cold weather emergency battery pack (120V and 277V only) ^{8,20}	<i>Standard textured colors</i>
	175M			QRS Quartz restrike system (100W max., lamp not included) ¹³	DDBT Dark bronze (std.)
	<u>Compact fluorescent²</u>			CR Enhanced corrosion resistance	DSST Sandstone
	26DTT				DNAT Natural aluminum
	2/26DTT				DWHG White
	32TRT				DBLB Black
	2/32TRT				<i>Shipped separately</i>
	42TRT				WSBBW Surface-mounted back box ¹⁹
	2/42TRT				UT5 Uplight 5 degrees ¹⁹
					WSTWG Wire guard (WST) ¹⁵
					WSTVG Vandal guard (WST) ¹⁵
					WSRWG Wire guard (WSR and WSQ) ¹⁵
					WSRVG Vandal guard (WSR and WSQ) ¹⁵

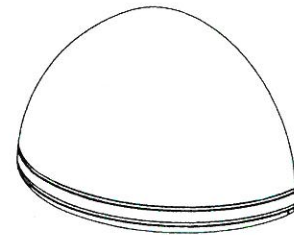
WST



WSR



WSQ



Dimensions are shown in inches (centimeters) unless otherwise noted.

	WST	WSR	WSQ
Width:	16-1/4(41.2)	18(45.7)	18(45.7)
Depth:	9-1/8(23.2)	9(22.8)	9(22.8)
Height:	7-1/4(18.4)	7-1/4(18.4)	9-3/8(23.8)
Max. weight:	30 lbs (13.6 kg)	30 lbs (13.6 kg)	30 lbs (13.6 kg)

NOTES:

- 1 120V only, NPF only
- 2 Only available with MD, MDU and MDU5 distributions.
- 3 Available on WSR fixture only.
- 4 Not available in Canada.
- 5 Optional multi-tap ballast (120V, 208V, 240V, 277V). In Canada 120V, 277V, 347V; ships as 120V/347V.
- 6 Optional 5-tap ballast (120V, 208V, 240V, 277V, 480V; n/a in Canada). 175M only.
- 7 Optional multi-volt electronic ballast (for compact fluorescent lamps only) capable of operating on any line voltage from 120V-277V.
- 8 Available for compact fluorescent units only.
- 9 Must specify voltage, n/a MVOLT or TB.
- 10 Not available with SF, DF or QRS.
- 11 Not available with 2/32TRT or 2/42TRT.
- 12 Battery pack by others and mounted external to luminaire. Pilot light/test switch mounting plate included. Consult factory for availability.
- 13 Not available with compact fluorescent.
- 14 Black finish only.
- 15 Must be ordered with fixture; no field modifications.
- 16 IBS not available with MD, MDU and MDU5 distributions.
- 17 For WSR, inverted orientation, with FTU and WTU distributions only.
- 18 Additional architectural colors available; see www.lithonia.com.
- 19 Must specify finish.
- 20 -20°C to 55°C operation. N/A 2/26DDT, 2/32TRT, 2/42TRT, WSQ or WSR with uplight distribution.

Lamp/Fixture Data			
Wattage	Ballast	Lamp type	Base type
High pressure sodium (med/clear)			
35	RHPF	E17	medium
50	RHPF	E17	medium
70	HX-HPF	E17	medium
100	HX-HPF	E17	medium
150	HX-HPF	E17	medium
Metal halide (med/clear)			
50	HX-HPF	E17	medium
70	HX-HPF	E17	medium
100	HX-HPF	E17	medium
150	HX-HPF	E17	medium
175	CWA	E17	medium
Compact fluorescent (double twin-tube/triple-tube)			
26DDT	electronic, HPF	T4	G24Q-3
32TRT	electronic, HPF	T4	GX24Q-3
42TRT	electronic, HPF	T4	GX24Q-4



Consistent with LEED® goals & Green Globes™ criteria for light pollution reduction

Does not meet with uplight distribution options.

FEATURES & SPECIFICATIONS

INTENDED USE — For building and wall-mounted applications.

CONSTRUCTION — Rugged, die-cast, single-piece aluminum housing. Die-cast doorframe has a 1/8" thick tempered glass lens. Doorframe is fully gasketed with one-piece solid silicone.

FINISH — Standard finish is textured dark bronze (DBBT) corrosion-resistant polyester powder finish. Additional architectural colors are available; see www.lithonia.com/archcolors. Striping is also available.

OPTICAL SYSTEM — Segmented reflectors for superior uniformity and control. Medium throw (MD) full cutoff distribution available.

ELECTRICAL SYSTEM — Ballast: Class P, multi-volt electronic, high power factor multi-volt, <10%THD, with starting temperature of 0°F (-18°C).

Socket: High temperature thermoplastic with an integral lamp retention clip.

INSTALLATION — Universal mounting mechanism with integral mounting support allows fixture to hinge down. Bubble level provides correct alignment with each installation.

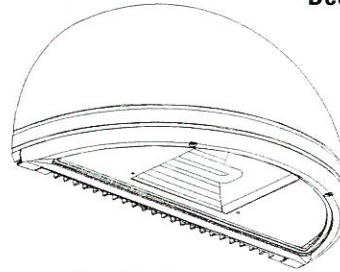
LISTING — UL Listed to US and Canadian safety standards (see Options). Suitable for wet locations (damp location listed in lens-up orientation). WLU option offers wet location listing in up orientation (see Options). IP65 Rated. 25°C ambient

NOTE: Specifications subject to change without notice.

Catalog No.	
Notes	Type

Decorative Wall-Mounted Lighting

WSQ



Specifications

Length: 18.0 (45.7)
 Depth: 7.25 (18.4)
 Overall Height: 9.0 (22.8)
 *Weight: 30 (13.6 kg)
 * Weight as configured in example below.

All dimensions are inches (centimeters) unless otherwise specified.

COMPACT FLUORESCENT

26DTT
 2/26DTT
 26TRT
 2/26TRT
 32TRT
 2/32TRT
 42TRT
 2/42TRT

ORDERING INFORMATION

For shortest lead times, configure product using **standard options (shown in bold)**.

Example: WSQ 42TRT MD MVOLT LPI

WSQ

Series	Wattage/Source	Distribution	Voltage	Options	Lamp ¹³	Finish ¹¹	
WSQ	26DTT	MD Medium throw	120	Shipped installed in fixture	LPI Lamp included	Dark bronze, textured	
	2/26DTT		277				DC12 Emergency circuit 12 volt (35W lamp included std.) ²
	26TRT		347				2DC12 Emergency circuit 12 volt (2, 35W lamps included) ²
	2/26TRT		MVOLT¹				DC2012 Emergency circuit 12 volt (20W lamp included) ²
	32TRT						2DC2012 Emergency circuit 12 volt (2, 20W lamps included) ²
	2/32TRT		DFL Diffusing lens				
	42TRT		EC Emergency circuit ³				
	2/42TRT		ELDW Emergency battery pack (32°F min. operating temp.) ^{4,5,6}				
			ELDWR Fixture wired for Bodine® B30 remote battery pack (32°F min. operating temp.) ⁴				
			ELDWRPS Fixture wired for PS1400 or PSDL3 remote battery pack (32°F min. operating temp.) ^{4,7}				
	GMF Internal slow-blow fusing ^{4,6}						
	PE Photoelectric cell-button type ^{8,9}						
	WLU Wet location door for up orientation						
	CSA CSA Certified						
	NOM NOM Certified						
	Shipped separately						
	BBW Surface-mounted back box ¹⁰						
	UT5 Uptilt 5 degrees ¹⁰						
	WG Wire guard ⁹						
	VG Vandal guard ⁹						
		CR Enhanced corrosion resistant					
		CRT Non-stick protective coating ¹²					

NOTES:

- Multi-volt electronic ballast capable of operating on any line voltage from 120-277V.
- Not available with GMF, EC, ELDWs.
- Maximum allowable wattage lamp included.
- Not available with MVOLT; must specify voltage.
- Not available with 2/32TRT or 2/42TRT
- Not available with DCs or EC.
- Not available with 2/42TRT.
- Not available with 347V.
- Must be ordered with fixture; cannot be field installed.
- May be ordered as an accessory.
- See www.lithonia.com/archcolors for additional color options.
- Black finish only.
- Must be specified (35K lamp with LPI).
- Must specify finish.

Accessories¹⁴

Order as separate catalog number.
 WSBBW Surface-mounted back box
 WSUT5 Uptilt 5 degrees

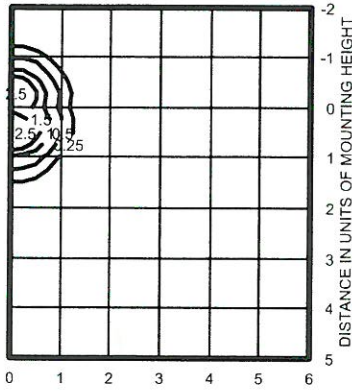


Consistent with LEED® goals & Green Globes™ criteria for light pollution reduction

WSQ Fluorescent Building Mounted

WSQ 2/26DTT MD TEST NO: LTL11984

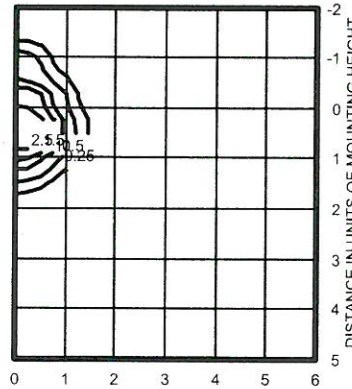
ISOILLUMINANCE PLOT (Footcandle)



W lamp, horizontal lamp orientation
Footcandle values based on 12'
mounting height, 1800 rated lumens.
Luminaire Efficiency: 25.3%

WSQ 32TRT MD TEST NO: LTL11981

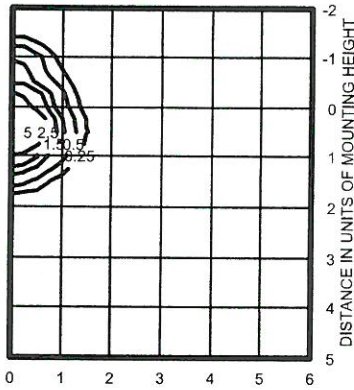
ISOILLUMINANCE PLOT (Footcandle)



W lamp, horizontal lamp orientation
Footcandle values based on 12'
mounting height, 2400 rated lumens.
Luminaire Efficiency: 50.4%

WSQ 42TRT MD TEST NO: LTL11979

ISOILLUMINANCE PLOT (Footcandle)



W lamp, horizontal lamp orientation
Footcandle values based on 12'
mounting height, 3200 rated lumens.
Luminaire Efficiency: 48.5%

Emergency Battery Pack Lamp Compatibility

Lamp Options (# of lamps/wattage)	ELDW	ELDWR	ELDWRPS
26DTT (one lamp)	■	■	■
2/26DTT	■	■	■
26TRT (one lamp)	■	■	■
2/26TRT	■	■	■
32TRT (one lamp)	■	■	■
2/32TRT			■
42TRT (one lamp)	■	■	■
2/42TRT			

FEATURES & SPECIFICATIONS

INTENDED USE — For building and wall-mounted applications.

CONSTRUCTION — Rugged, die-cast, single piece aluminum housing. Die-cast doorframe has a 1/8" thick tempered glass lens. Doorframe is fully gasketed with one-piece solid silicone.

FINISH — Standard finish is textured dark bronze (DDBT) corrosion-resistant polyester powder finish. Additional architectural colors are available; see www.lithonia.com/archcolors. Striping is also available.

OPTICAL SYSTEM — Segmented reflectors for superior uniformity and control. Reflectors are interchangeable. Three full cutoff downlight distributions available: FT (forward throw), MD (medium throw) and WT (wide throw).

ELECTRICAL SYSTEM — Ballast: 50W-150W utilizes a high reactance, high power factor ballast. Metal halide 150W and below are standard with pulse-start technology. 35S utilizes a reactance high power factor ballast. 175W utilizes a constant-wattage auto transformer ballast. Quick disconnect plug easily disconnects reflector from ballast. Ballasts are copper-wound and 100% factory-tested.

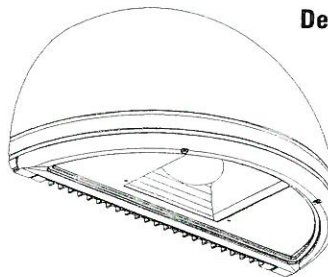
Socket: Porcelain, medium-base socket with copper alloy, nickel-plated screw shell and center contact. UL listed 660W, 600V 4KV pulse rated.

INSTALLATION — Universal mounting mechanism with integral mounting support allows fixture to hinge down. Bubble level provides correct alignment with every installation.

LISTING — UL Listed to US and Canadian safety standards (see Options). UL listed suitable for wet locations (damp location listed in lens up orientation). WLU option offers wet location listing in lens up orientation (see Options). IP65 rated. 25°C ambient

NOTE: Specifications subject to change without notice.

Catalog A	
Notes	Type



Decorative Wall-Mounted Lighting

WSQ

METAL HALIDE
50W-175W
HIGH PRESSURE SODIUM
35W-150W

Specifications

Length: 18.0 (45.7)
Depth: 7.25 (18.4)
Overall Height: 9.0 (22.8)

*Weight: 30 (13.6 kg)

* Weight as configured in example below.

All dimensions are inches (centimeters) unless otherwise specified.

ORDERING INFORMATION

For shortest lead times, configure product using **standard options (shown in bold)**.

Example: WSQ 175M FT 120 LPI

WSQ

Series	Wattage/ source	Distribution	Voltage	Ballast	Options	Lamp ¹⁶
WSQ	<u>High pressure sodium</u> 35S ¹ 50S 70S 100S 150S <u>Metal halide</u> 50M 70M 100M 150M 175M	FT Forward throw MD Medium throw (coated lamp std.) WT Wide throw	120 208 ² 240 ² 277 347 TB³ TBV ⁴ 23050HZ ⁵	(blank) Magnetic ballast CWI Constant wattage isolated	<u>Shipped installed in fixture</u> SF Single fuse 120, 277, 347V DF Double fuse 208, 240V DC12 Emergency circuit 12 volt (35W lamp included std.) ⁶ 2DC12 Emergency circuit 12 volt (2, 35W lamps included) ⁶ DC2012 Emergency circuit 12 volt (20W lamp included) ⁶ 2DC2012 Emergency circuit 12 volt (2, 20W lamps included) ⁶ DFL Diffusing lens EC Emergency circuit ^{7,8} IBS Internal backlight shield ⁹ PE Photoelectric cell-button type (n/a TB/TBV) ^{10,11} QRS Quartz restrike system ^{8,12} WLU Wet location door for up orientation CSA CSA Certified NOM NOM Certified <u>Shipped separately</u> BBW Surface-mounted back box ¹³ UT5 Uptilt 5 degrees ¹³ WG Wire guard ¹⁰ VG Vandal guard ¹⁰	LPI Lamp included L/LP Less lamp Finish ¹⁴ (blank) Dark bronze, textured DSST Sandstone, textured DNAT Natural aluminum, textured DWHG White, textured DBLB Black, textured CR Enhanced corrosion resistant CRT Non-stick protective coating ¹⁵

NOTES:

- 120V.
- Must specify CWI for use in Canada.
- Optional multi-tap ballast (120, 208, 240, 277V); (120, 277, 347V in Canada; ships as 120V/347V).
- Optional 5-tap ballast (120, 208, 240, 277, 480V; not available in Canada). 175W metal halide only.
- Consult factory for available wattages.
- Not available with SF, DF or QRS.
- Not available with QRS or DCs.
- Maximum allowable wattage lamp included.
- Not available with Medium Throw (MD, MDU, MDU5) distributions.
- Must be ordered with fixture; cannot be field installed.
- Not available with 347V.
- Not available with EC or DCs.
- May be ordered as an accessory.
- See www.lithonia.com/archcolors for additional color options.
- Black finish only.
- Must be specified.
- Must specify finish.

Accessories¹⁷

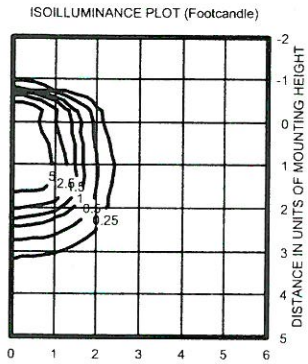
Order as separate catalog number.
WSBBW Surface-mounted back box
WSUT5 Uptilt 5 degrees



Consistent with LEED® goals & Green Globes™ criteria for light pollution reduction

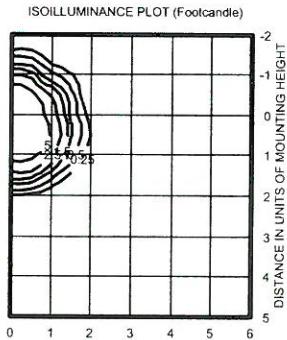
WSQ Metal Halide, High Pressure Sodium Building Mounted

WSQ 175M FT TEST NO: LTL11336



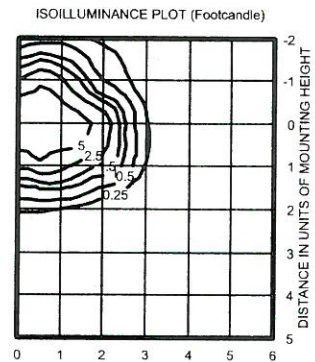
W lamp, horizontal lamp orientation
Footcandle values based on 12'
mounting height, 12800 rated lumens.
Luminaire Efficiency: 55.6%

WSQ 175M MD TEST NO: LTL11335



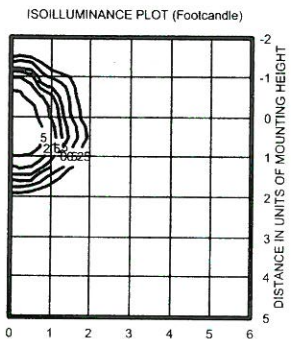
W lamp, horizontal lamp orientation
Footcandle values based on 12'
mounting height, 11080 rated lumens.
Luminaire Efficiency: 55.3%

WSQ 175M WT TEST NO: LTL11337



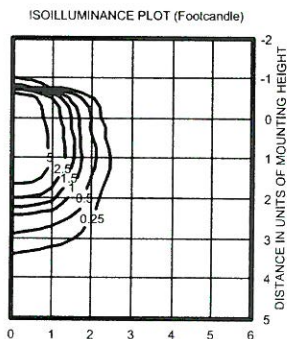
W lamp, horizontal lamp orientation
Footcandle values based on 12'
mounting height, 12800 rated lumens.
Luminaire Efficiency: 68.1%

WSQ 100M MD TEST NO: LTL11539



W lamp, horizontal lamp orientation
Footcandle values based on 12'
mounting height, 7900 rated lumens.
Luminaire Efficiency: 55.5%

WSQ 150S FT TEST NO: LTL11546



W lamp, horizontal lamp orientation
Footcandle values based on 12'
mounting height, 15800 rated lumens.
Luminaire Efficiency: 51.6%