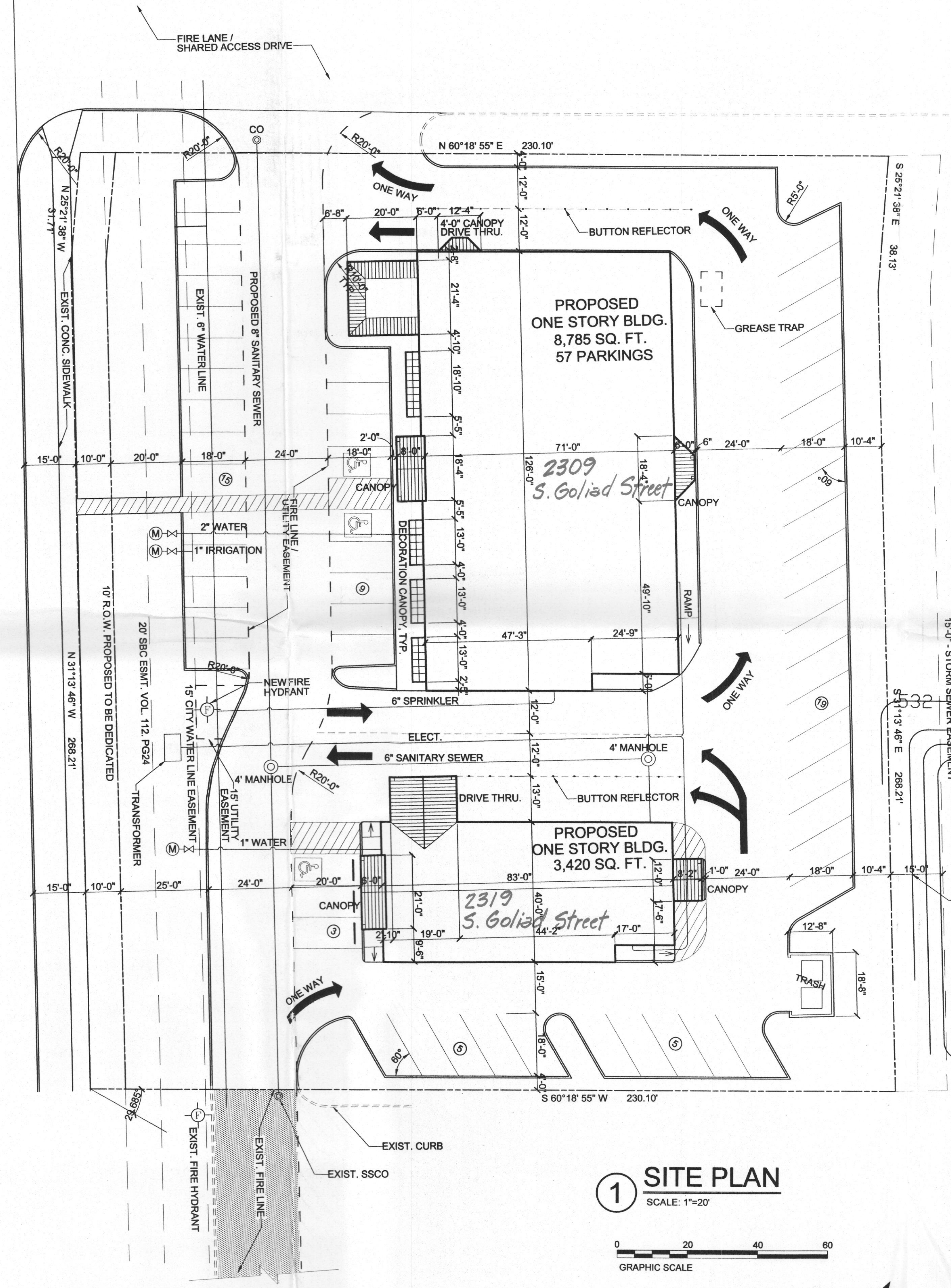
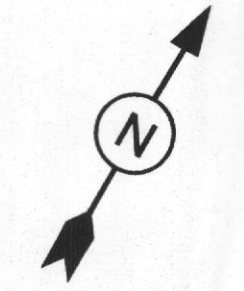
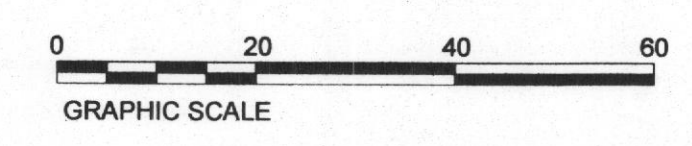


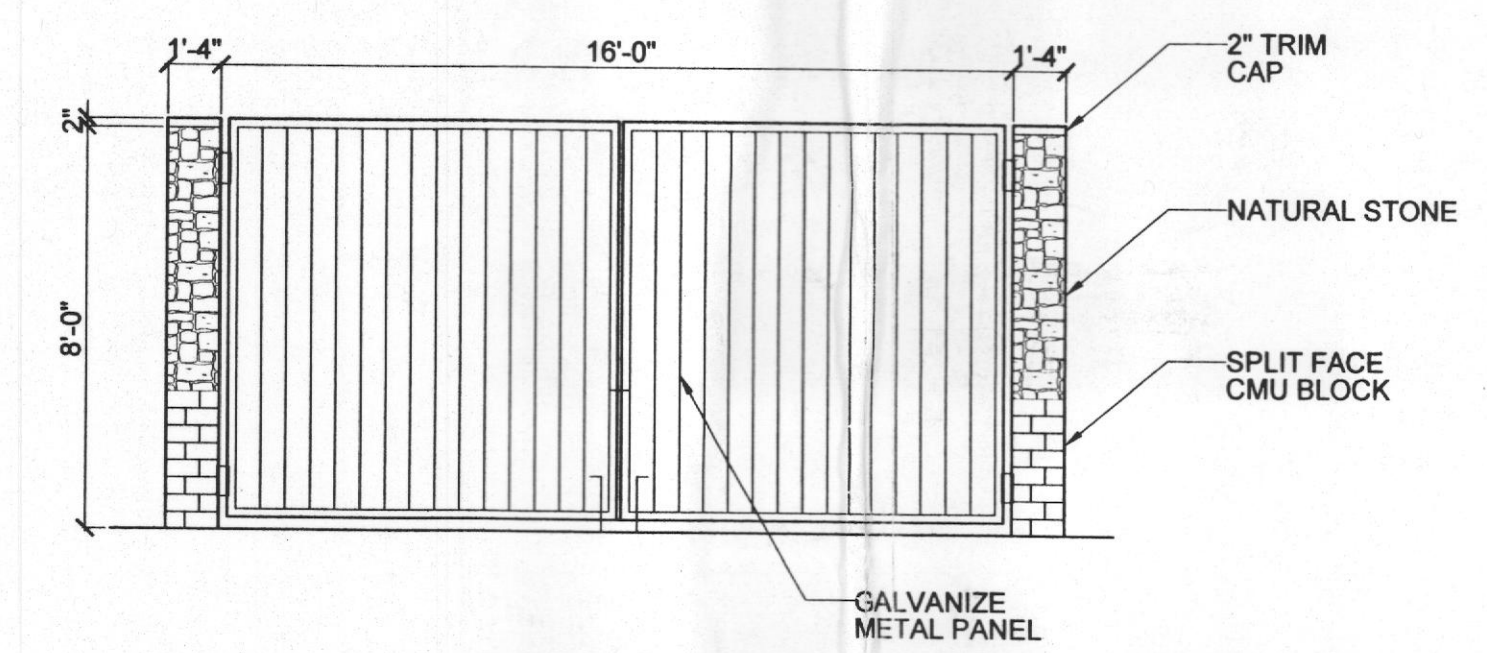
STATE HIGHWAY 205



1 SITE PLAN  
SCALE: 1"=20'

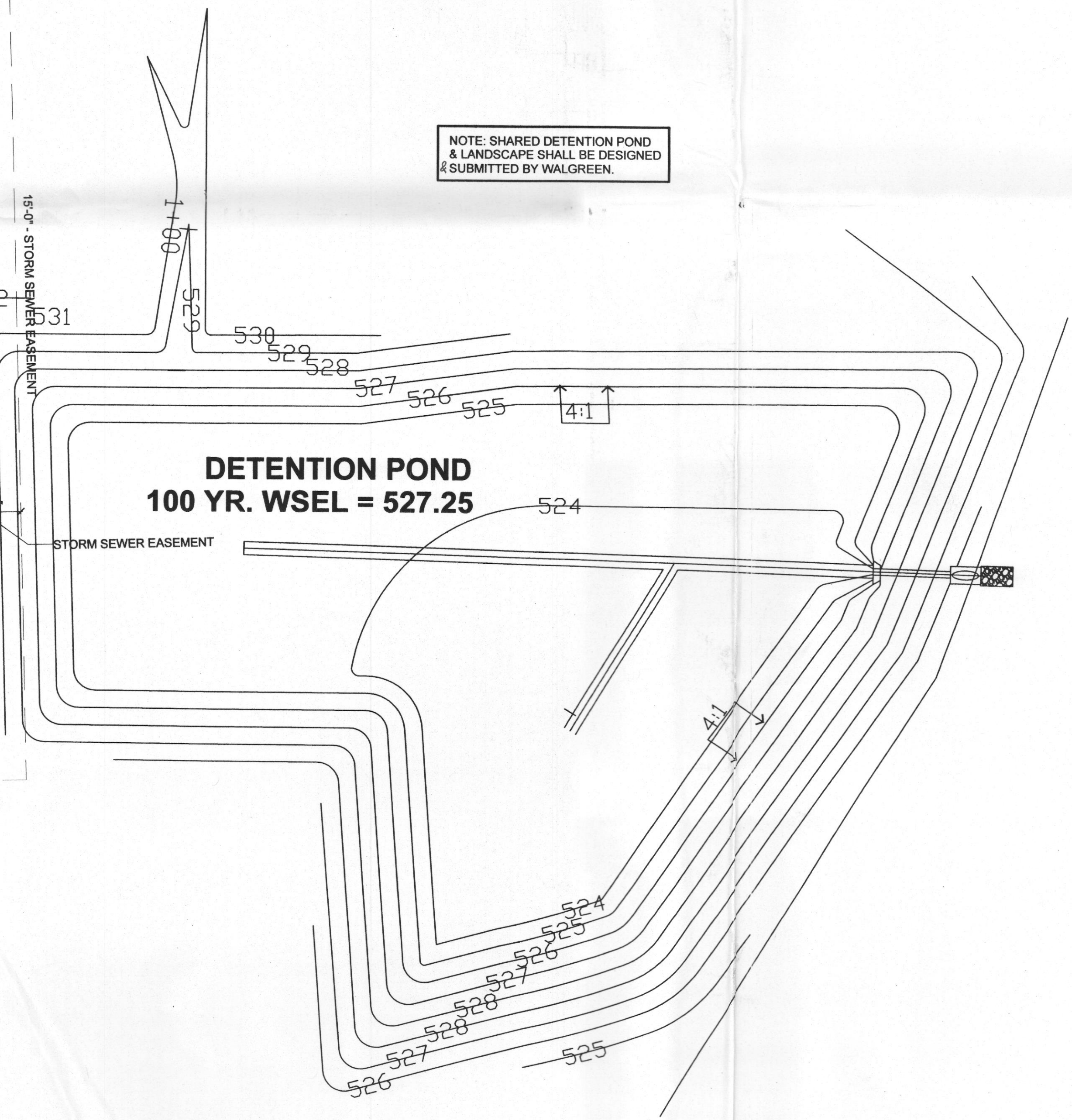


ADDRESS MAP  
3/12/09



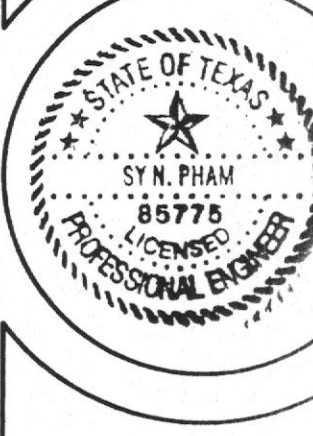
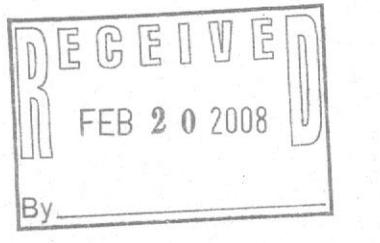
2 TRASH FRONT ELEVATION  
N.T.S.

NOTE: SHARED DETENTION POND & LANDSCAPE SHALL BE DESIGNED & SUBMITTED BY WALGREEN.



R2008 004

FILE COPY



205 PLAZA  
STATE HIGHWAY 205  
ROCKWALL, TEXAS 00000

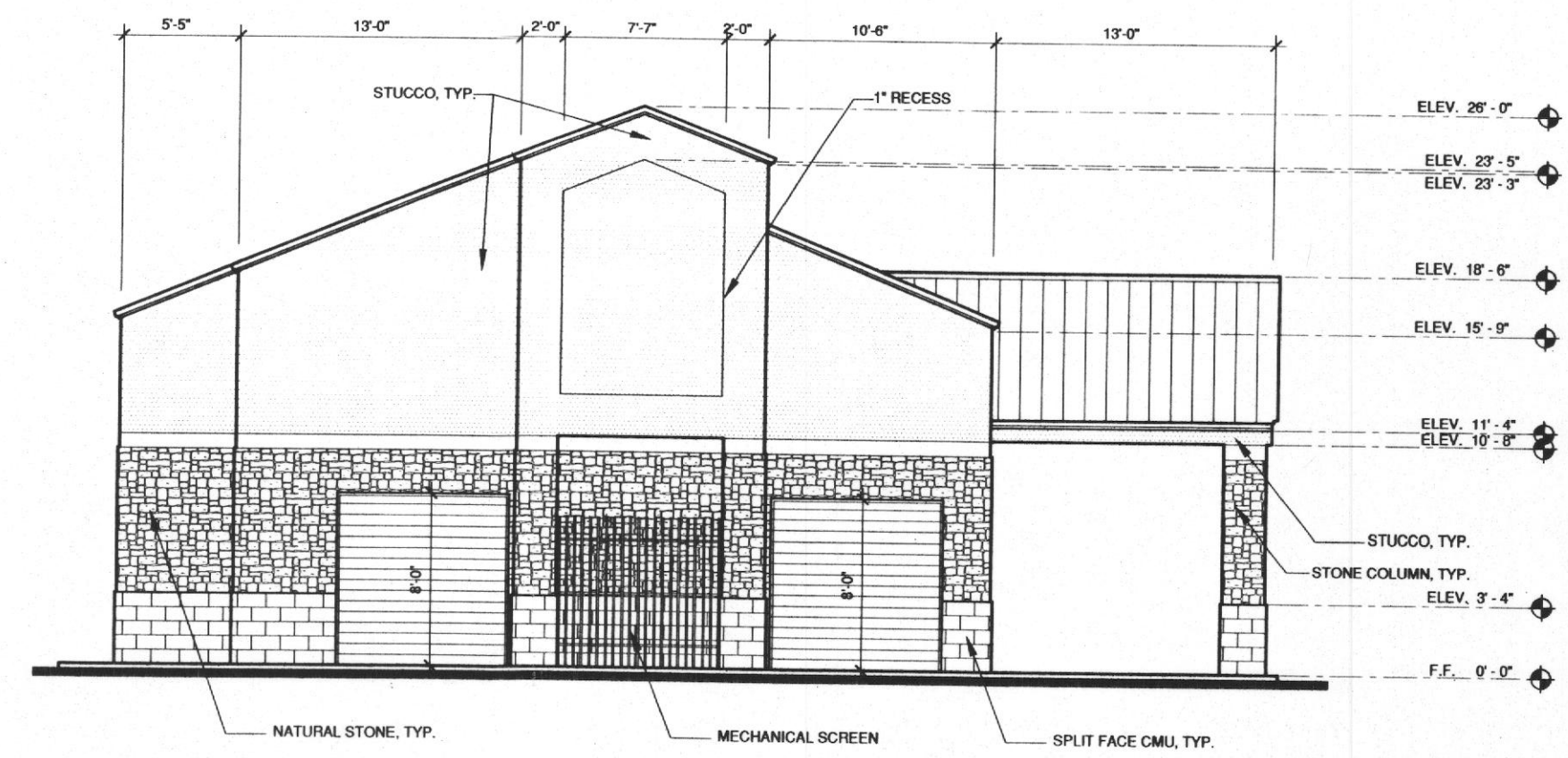
SITE PLAN  
REVISIONS:

SHEET:

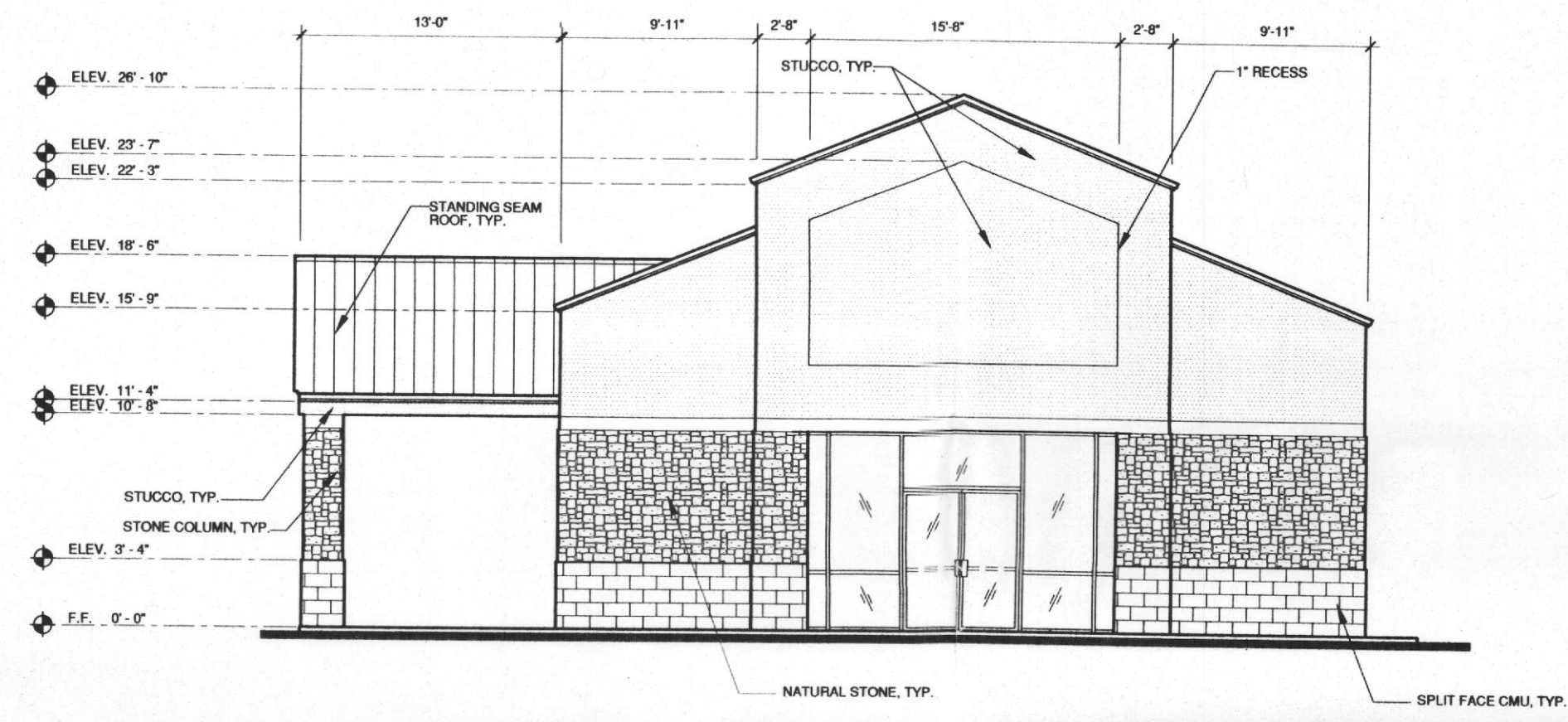
SP1

JOB NO. 0710

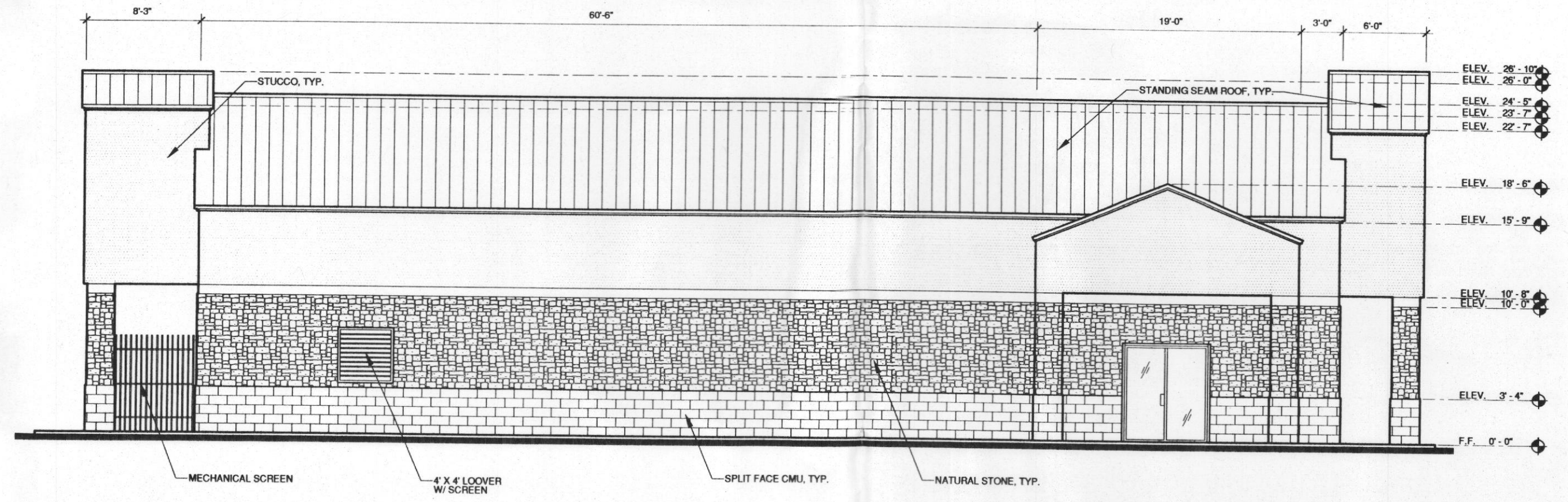




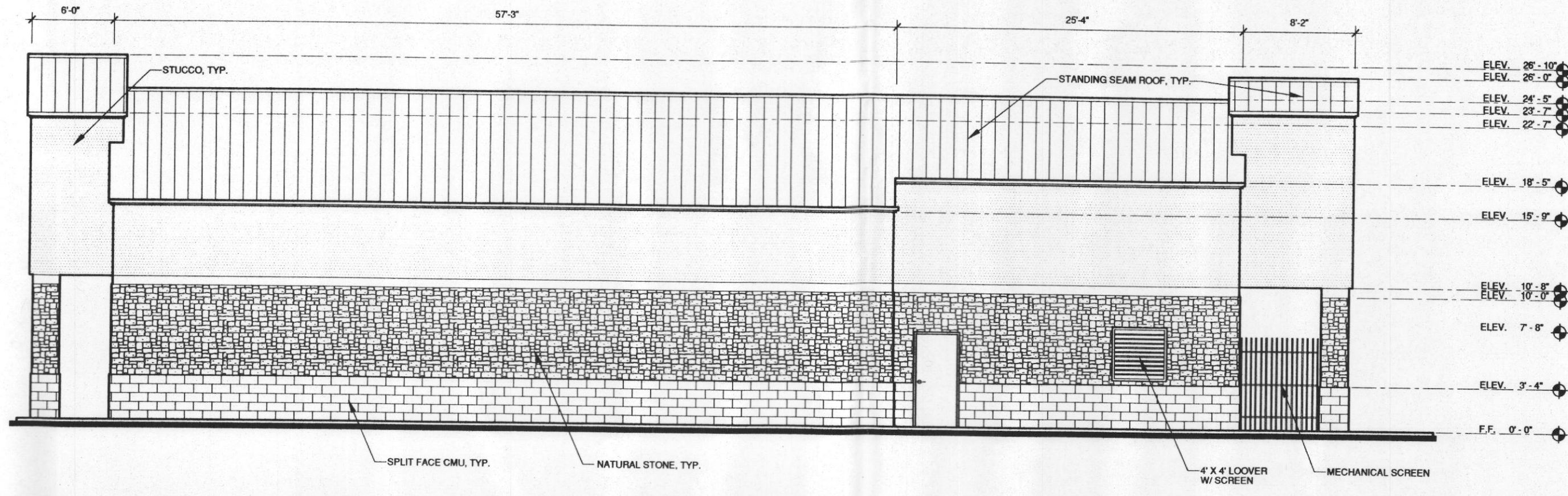
**(D) REAR ELEVATION**  
SCALE: 1/8" = 1'-0"



**(C) FRONT ELEVATION**  
SCALE: 1/8" = 1'-0"



**(B) LEFT ELEVATION**  
SCALE: 1/8" = 1'-0"

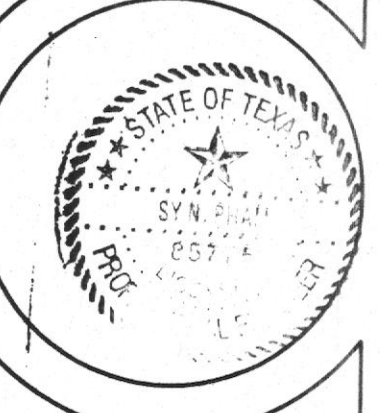


**(A) RIGHT ELEVATION**  
SCALE: 1/8" = 1'-0"

**PERCENT OF MATERIALS USED**

ELEVATIONS	FRONT	REAR	RIGHT	LEFT
TOTAL WALL AREA	881 SQ.FT.	848 SQ.FT.	1611 SQ.FT.	1546 SQ.FT.
SQ.FT. / PERCENT	100%	100%	100%	100%
STUCCO AREA	438 SQ.FT.	410 SQ.FT.	713 SQ.FT.	619 SQ.FT.
SQ. FT. / PERCENT	49%	48%	44%	40%
NATURAL STONE AREA	193 SQ.FT.	210 SQ.FT.	563 SQ.FT.	552 SQ.FT.
SQ. FT. / PERCENT	22%	25%	35%	36%
SPLIT CMU AREA	89 SQ.FT.	88 SQ.FT.	278 SQ.FT.	268 SQ.FT.
SQ. FT. / PERCENT	10%	10%	17%	17%

Email: spham@spsdb.net  
 Tel. 972-241-4016  
 Fax. 972-241-4018  
**SP Design & Build Inc.**  
 Consultant Engineers  
 11500 N. Stemmons Freeway, Suite 144 Dallas, TX 75229



**205 PLAZA**  
 STATE HIGHWAY 205  
 ROCKWALL, TX 75087

ELEVATIONS  
REVISIONS:

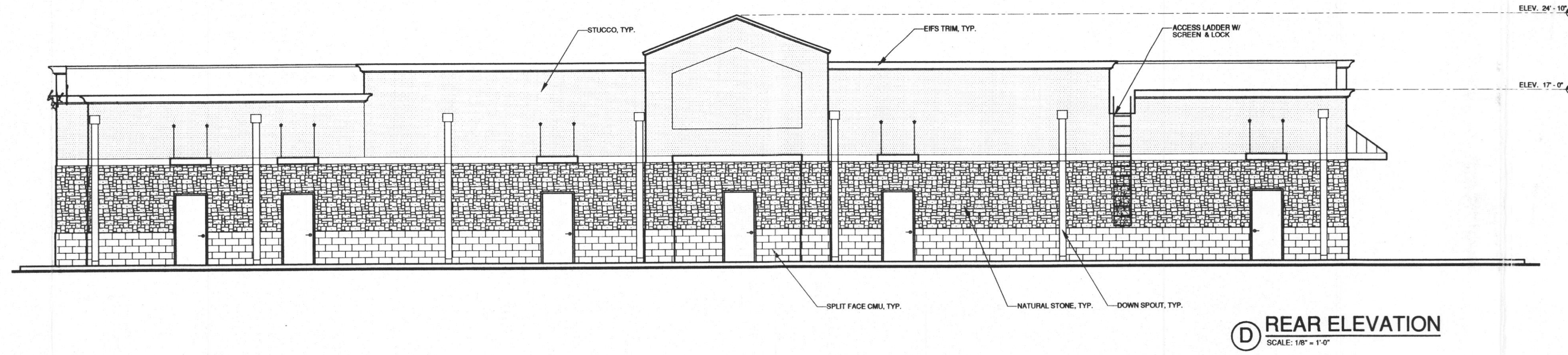
SHEET:

**A3**

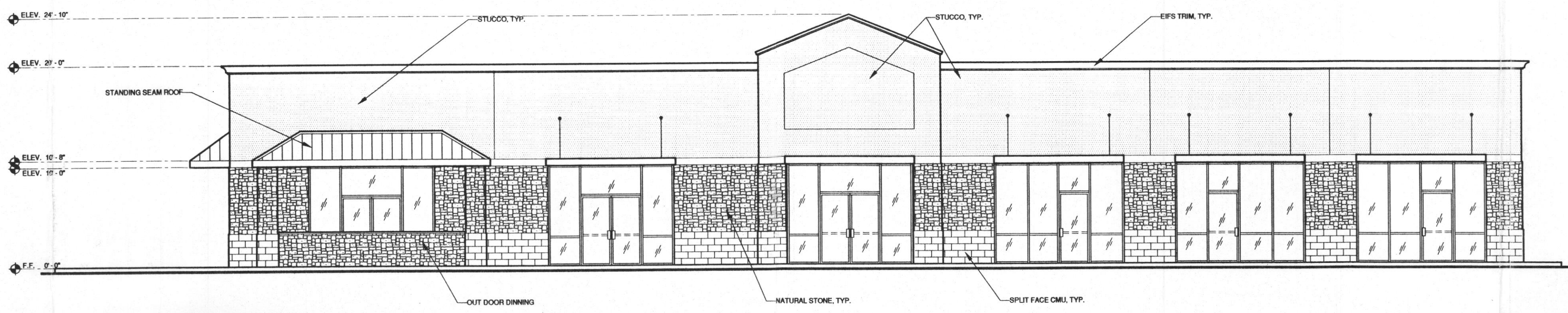
JOB NO. 0710

FILE COPY

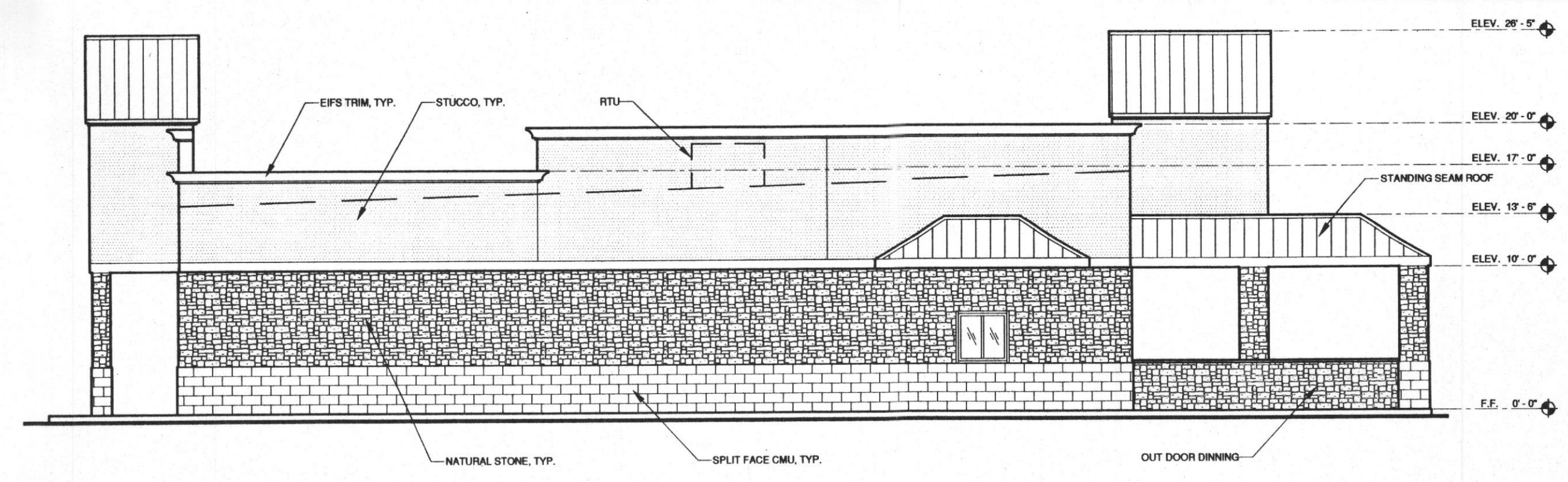




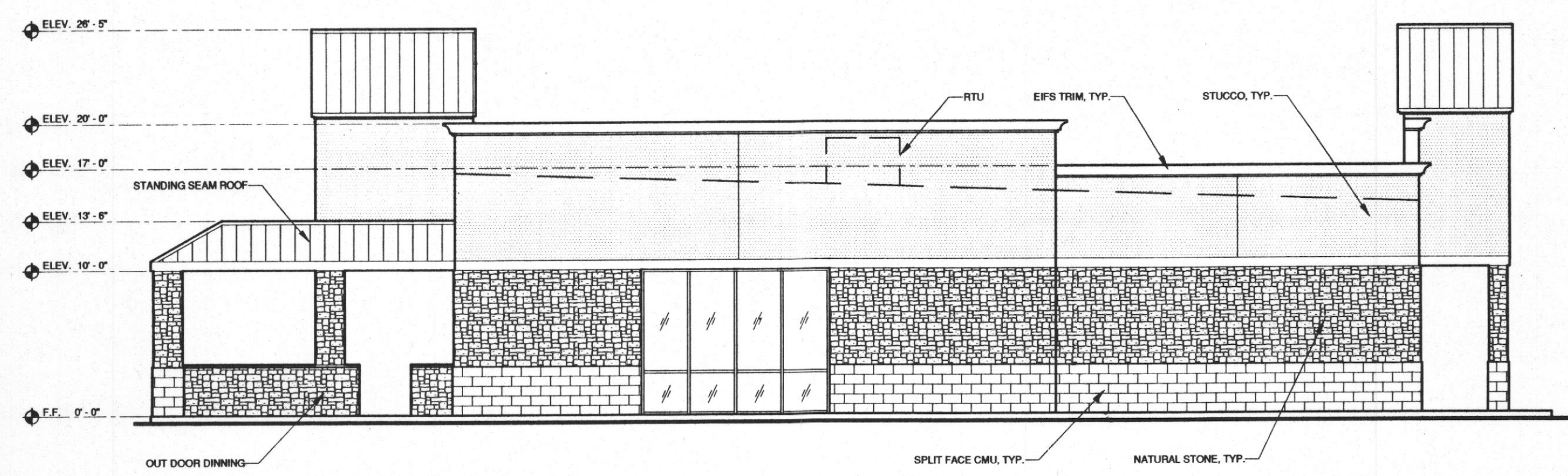
**D REAR ELEVATION**  
SCALE: 1/8" = 1'-0"



**C FRONT ELEVATION**  
SCALE: 1/8" = 1'-0"



**B LEFT ELEVATION**  
SCALE: 1/8" = 1'-0"



**A RIGHT ELEVATION**  
SCALE: 1/8" = 1'-0"

PERCENT OF MATERIALS USED				
ELEVATIONS	FRONT	REAR	RIGHT	LEFT
TOTAL WALL AREA SQ. FT. / PERCENT	2536 SQ.FT. 100%	2272 SQ.FT. 100%	1306 SQ.FT. 100%	1324 SQ.FT. 100%
STUCCO AREA SQ. FT. / PERCENT	1204 SQ.FT. 47%	878 SQ.FT. 39%	530 SQ.FT. 41%	545 SQ.FT. 41%
NATURAL STONE AREA SQ. FT. / PERCENT	504 SQ.FT. 20%	820 SQ.FT. 36%	426 SQ.FT. 33%	519 SQ.FT. 39%
SPLIT CMU AREA SQ. FT. / PERCENT	126 SQ.FT. 5%	367 SQ.FT. 16%	185 SQ.FT. 14%	226 SQ.FT. 17%

RECEIVED  
MAR 20 2008  
By

FILE COPY

2008 004



**205 PLAZA**  
 STATE HIGHWAY 205  
 ROCKWALL, TX 75087

ELEVATIONS REVISIONS:



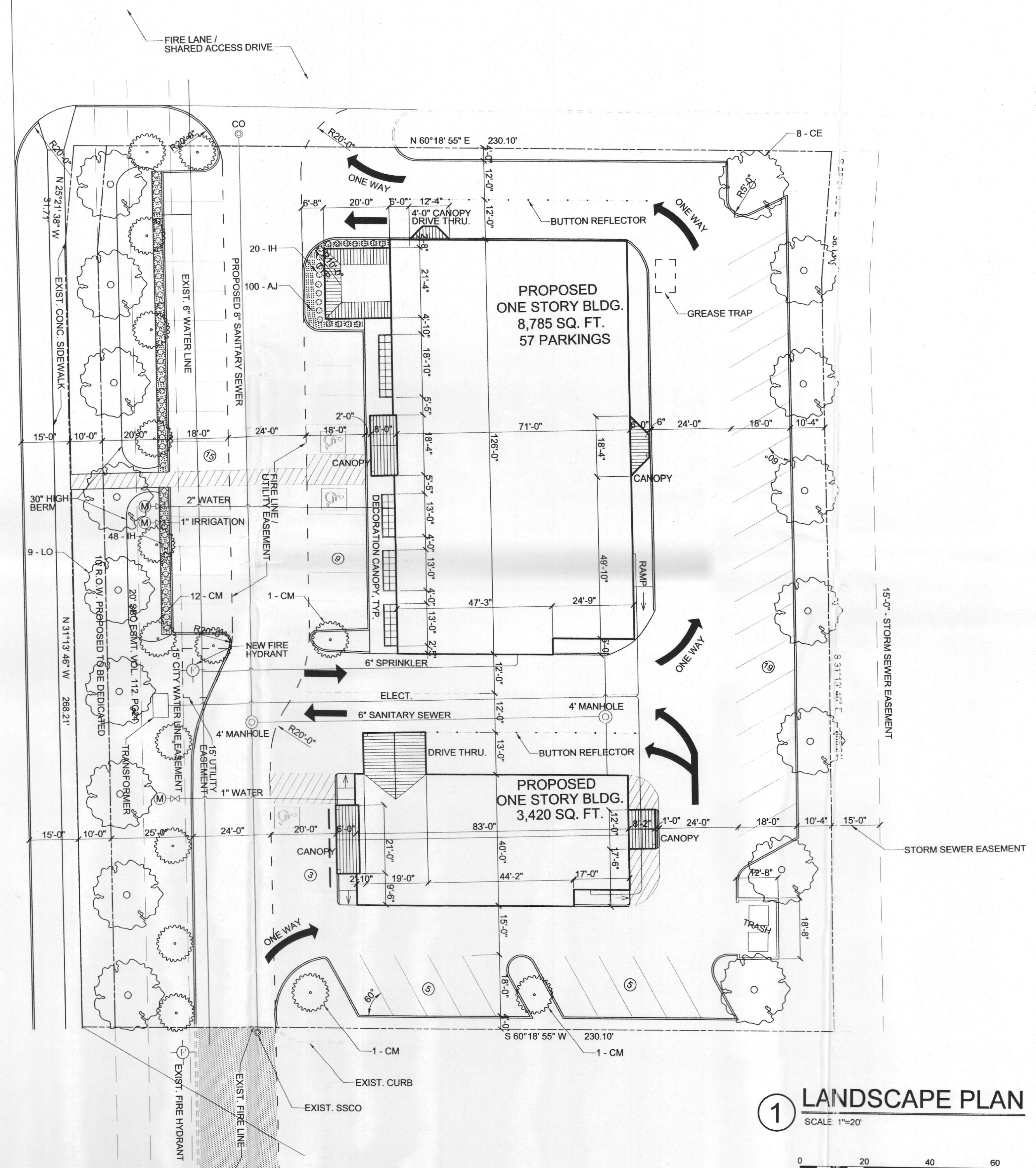

**CITY REQUIREMENTS:**

20' BUFFER STRIP.  
 AREA OF PARKING - 22,500 S.F.  
 NUMBER OF PARKING SPACES - 66  
 CANOPY TREES REQUIRED 7 TREES PROVIDED 8 TREES.  
 PARKING SPACES WITHIN 80' OF A CANOPY.  
 TOTAL SITE AREA = 61,648 S.F.  
 TOTAL LANDSCAPE AREA PROVIDED = 13,620 S.F.  
 LESS 10' R.O.W. DEDICATION = 2,360 S.F.  
 TOTAL LANDSCAPE AREA PROVIDED = 11,260 S.F.  
 TOTAL LANDSCAPE AREA REQUIRED = 9,247 S.F.

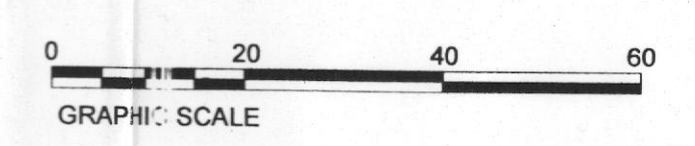
**PLANT LIST:**

QUANTITY - SYMBOL - NAMES - SIZE - CONDITION  
 100 - AJ - ASIAN JASMINE (TRACHELO SPERMUM ASIAN) 6"78" S.F. SPREAD - 4" POT @ 8 O.C.  
 9 - LO - LIVE OAK (QUERCUS VIRGINIANA) 4" CALIPER, BB  
 68 - IH INDIAN HAWTHORN (RAPHIOLEPIS - INDICA \* CLARA OR EQUAL) 18 /24" - 5 - GALLON  
 8 - C.E. - CEDAR ELM, (1" CALIPER 5' TALL),  
 15 - CM CRAPEMYTLE (1" CALIPER 5' TALL),  
 LAWN: 14,630 S.F. BERMUDA  
 GRASS (BID SOLID SOD & HYDROMULCH AS ALTERNATE).  
**MISCELLANEOUS MATERIALS:**  
 7 - CY-ORGANIC BEDPREP MATERIAL (LIVING EARTH TECHNOLOGIES),  
 409 S.F. CYPRES BARK MULCH,  
 14,943 S.F. AREA FOR FINE GRADING,  
 120 - L.F. RYERSON METAL EDGING,  
 14,630 S.F. LAWN AREA FOR ROTOTILLING - 2" DEEP,  
 8 - EACH TREES FOR STAKING,  
 FERTILIZER FOR LAWN AND SHRUBS.

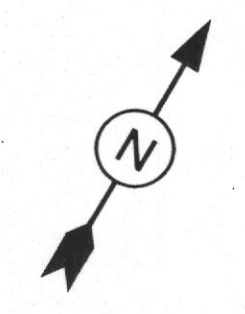
STATE HIGHWAY 205



**1 LANDSCAPE PLAN**  
SCALE 1"=20'



NOTE: NO TREE WITHIN 5' OF WATER OR SEWER LINE.



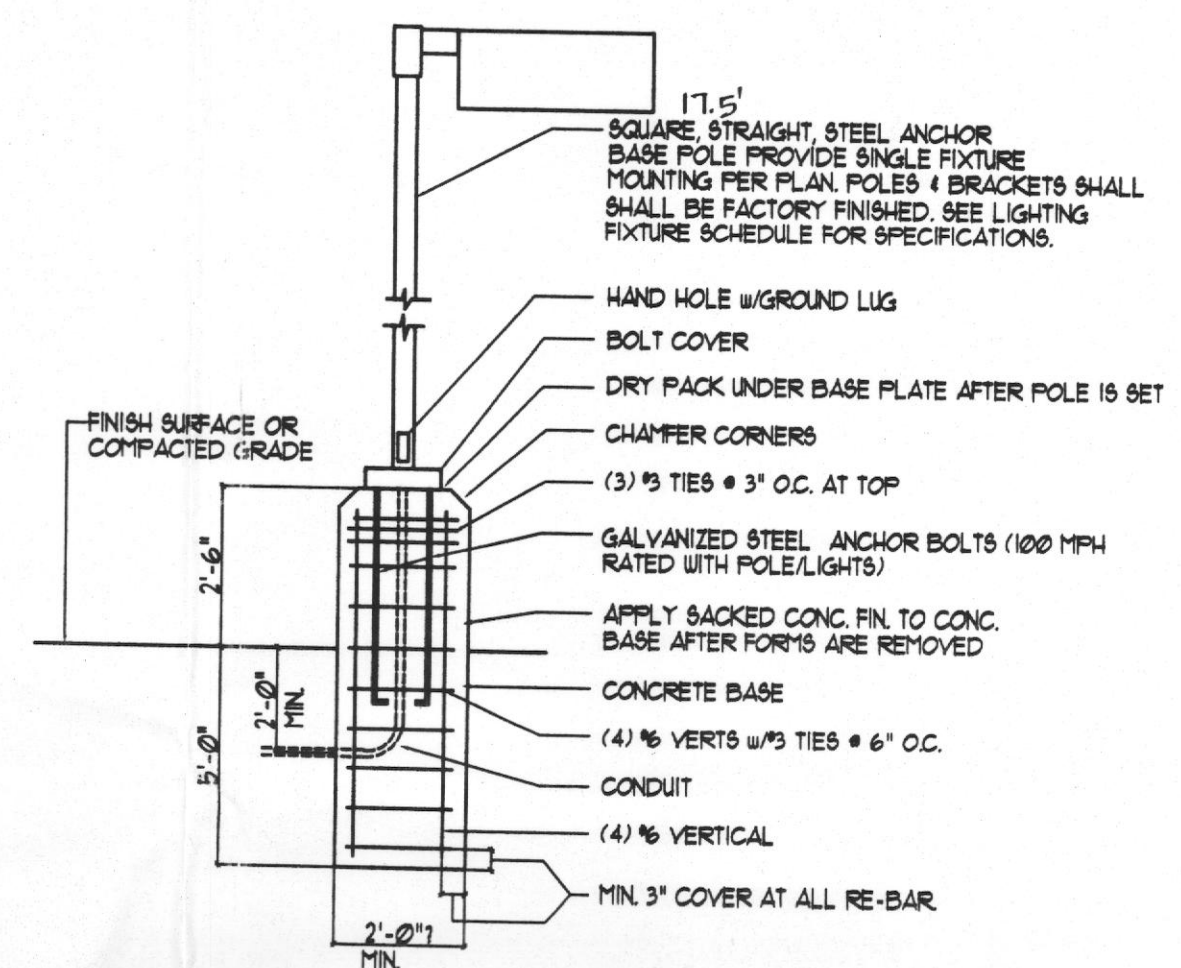
FILE COPY



STATISTICS					
DESCRIPTION	SYMBOL	AVERAGE	MAX	MIN	AVG. MIN.
CALCULATION ZONE #1	+	19	119	02	93.1

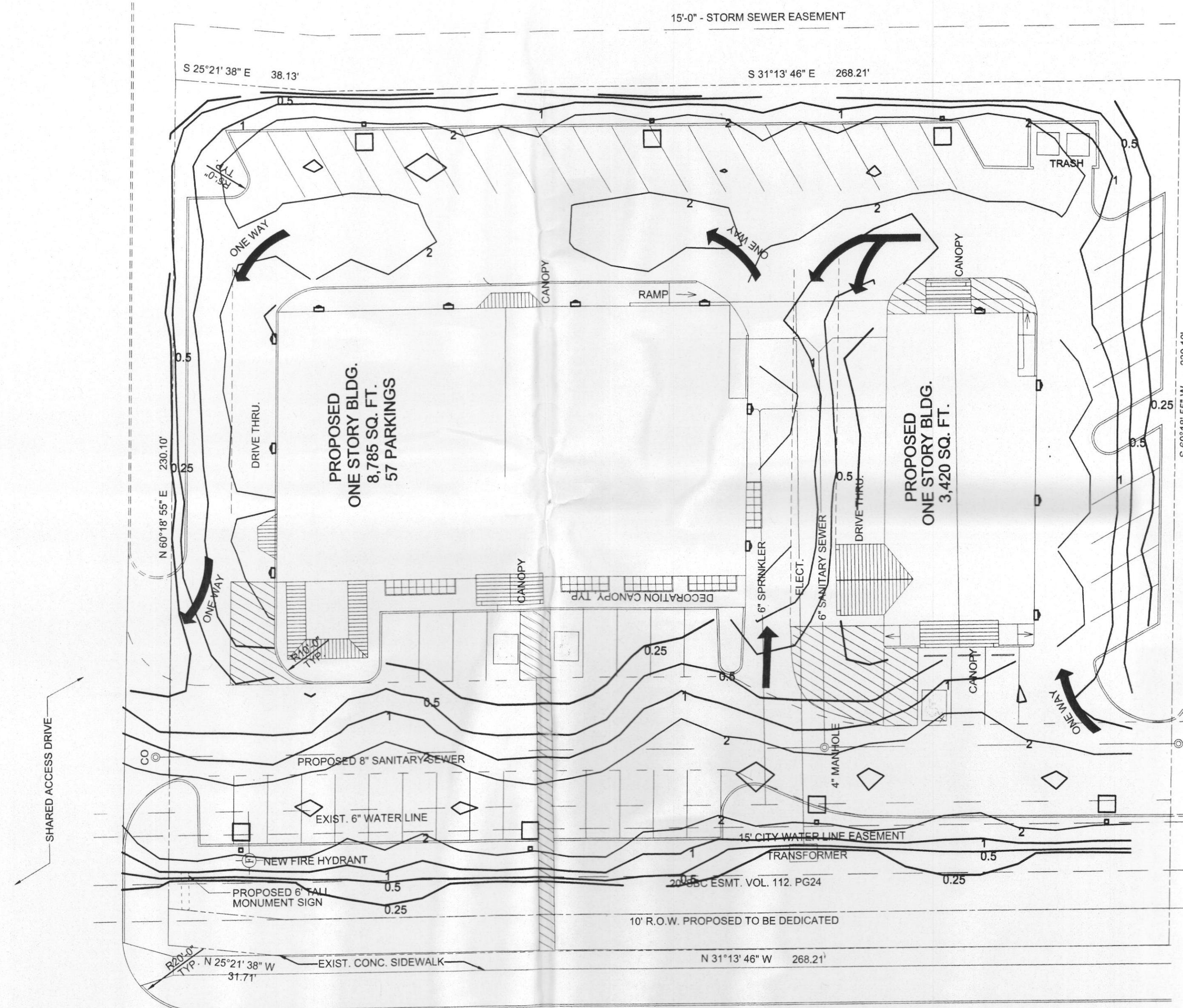
### LIGHTING SYMBOLS

- LITHONIA K91-2501-R3-HS-208-SP04-LPI-DF CUTOFF FIXTURE WITH HOUSE SIDE SHIELD ON 11.5' POLE WITH 250W CLEAR METAL HALIDE LAMP ALL IN BLACK FINISH.
- D LITHONIA ASW-1001-SR3-208-DF-DBLB ARCHITECTURAL SCONCE WITH 100W CLEAR ED-11 METAL HALIDE LAMP MOUNTED AT 12' AFF.



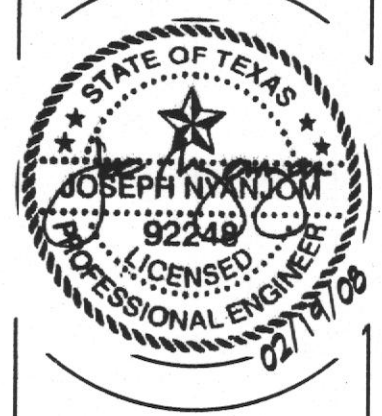
**NOTE:**  
MANUFACTURER SHALL WARRANT THAT THE COMPLETE ASSEMBLY, FIXTURES, POLE, BASE, SHALL WITH STAND MIN 100 MPH SUSTAINED WIND LOAD OR AS REQUIRED BY LOCAL AGENCY, WHICH EVER IS GREATER.

**2 POLE BASE DETAIL**  
SCALE: N.T.S.



**1 SITE PLAN - LIGHTING**  
SCALE: 1"=20'

**SP Design & Build Inc.**  
11500 N. Stemmons Fwy.,  
Dallas, TX 75229  
#144  
Tel. 972-241-4016  
Fax. 972-241-4018



**205 PLAZA**  
STATE HIGHWAY 205  
ROCKWALL, TEXAS 00000

**Lwanda & Company**  
Consulting Engineers  
6136 Frisco Square Blvd.  
Suite 400  
Frisco, Texas 75034  
Tel. 469.287.5488 Fax. 469.287.5489

SITE PLAN
REVISIONS:

SHEET:  
**E1**  
OF:

FILE COPY