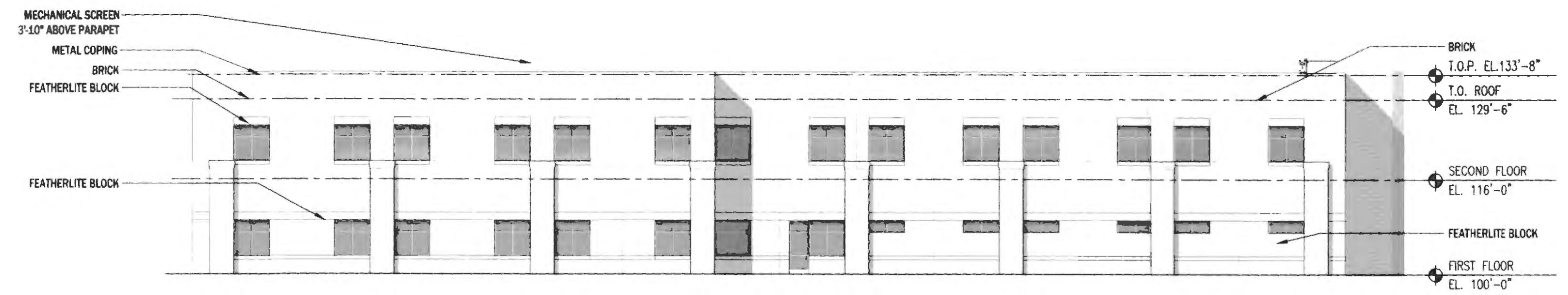
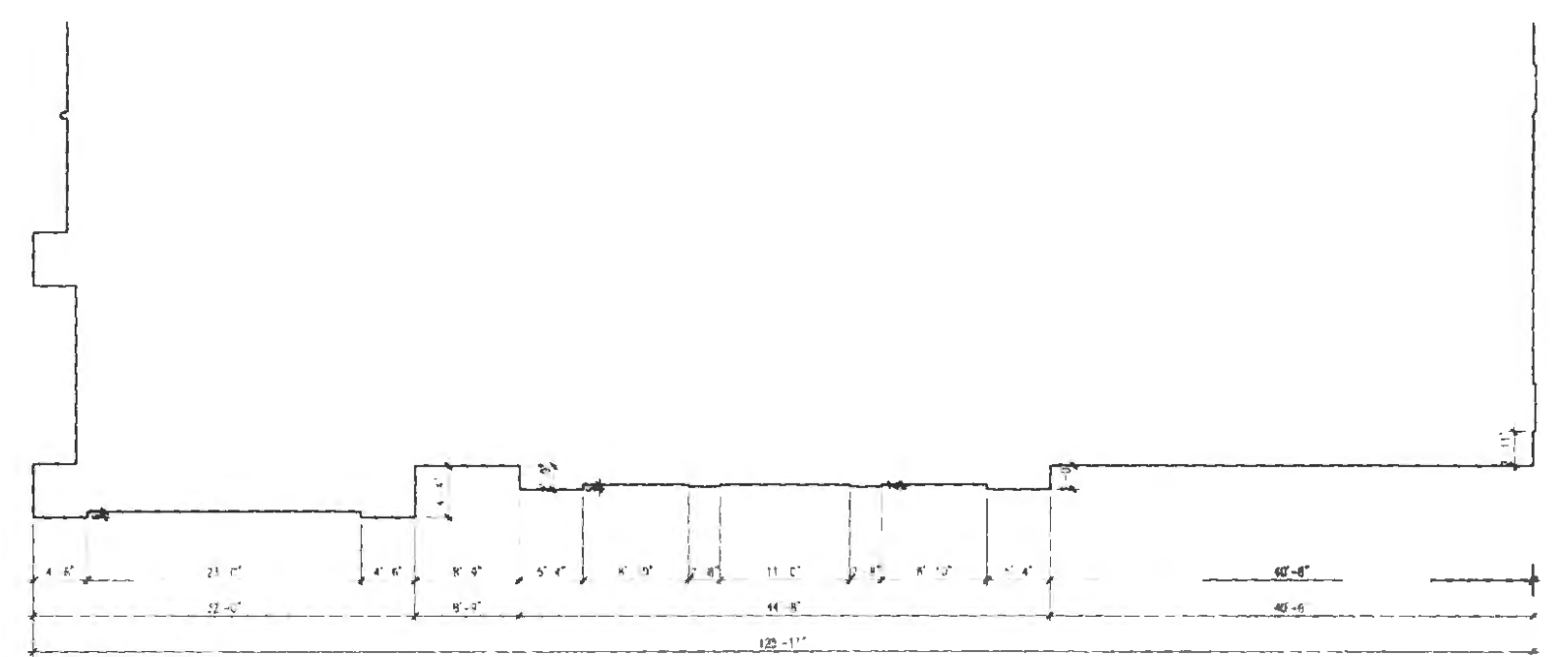
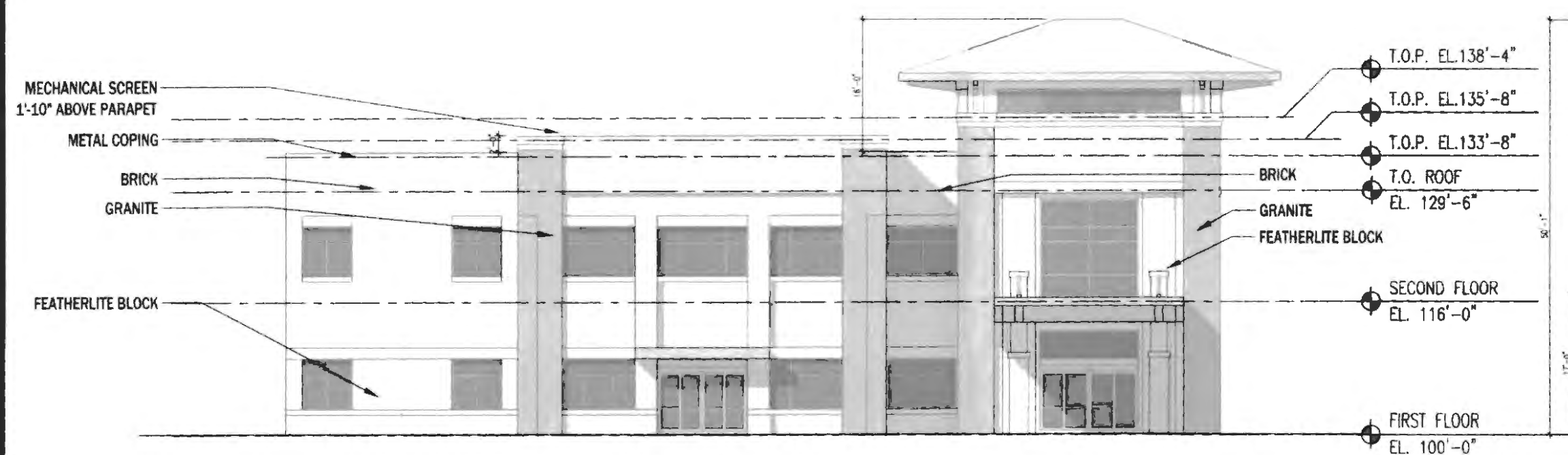
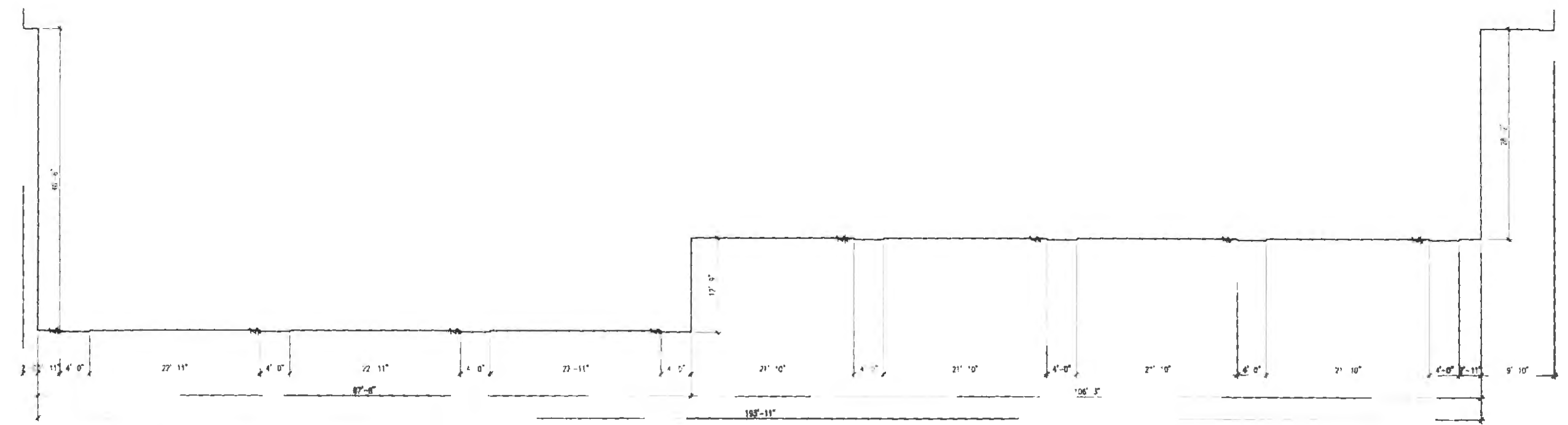


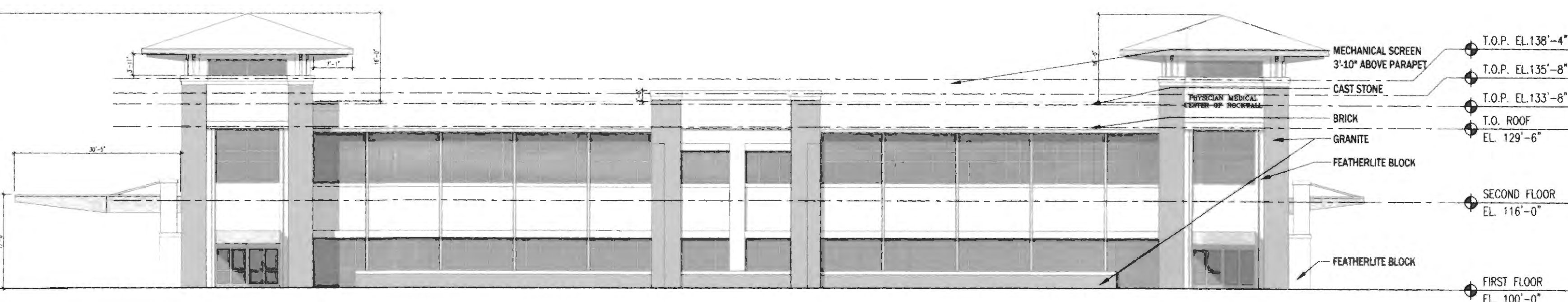
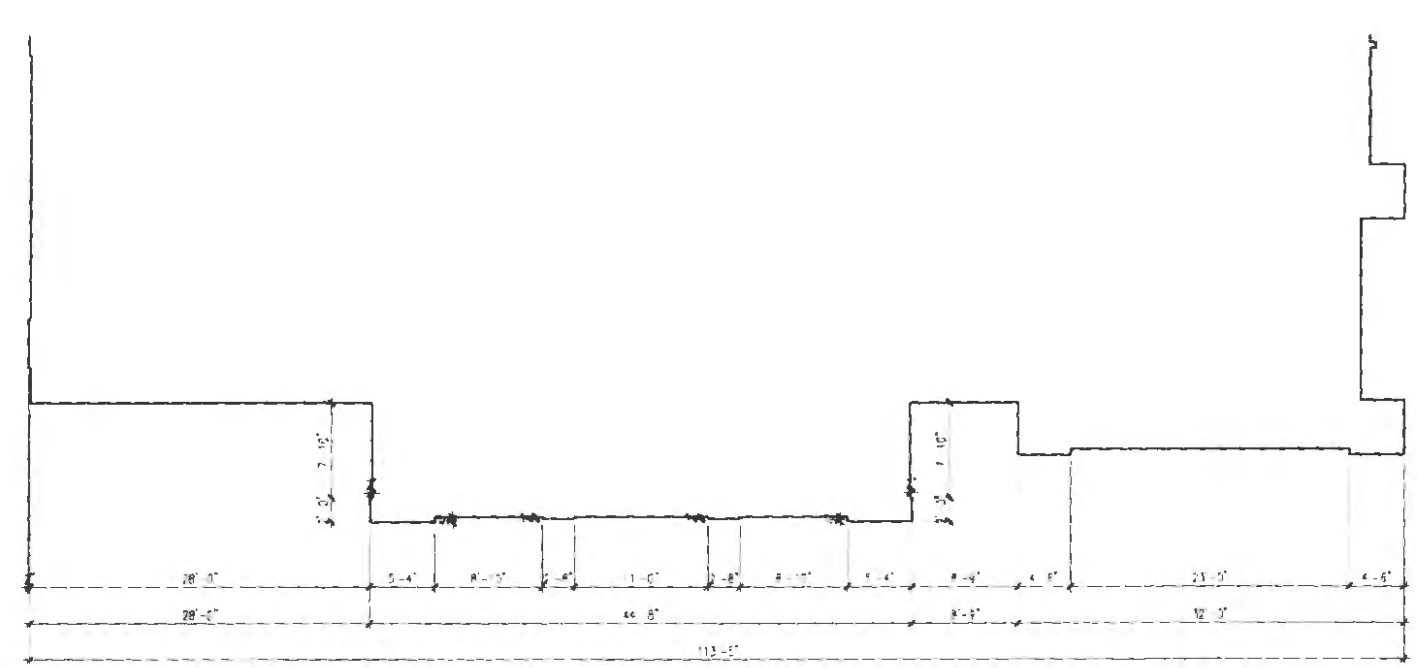
WEST ELEVATION
20% STONE



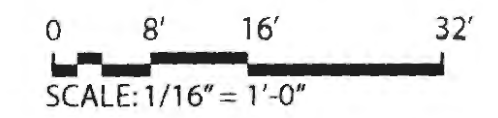
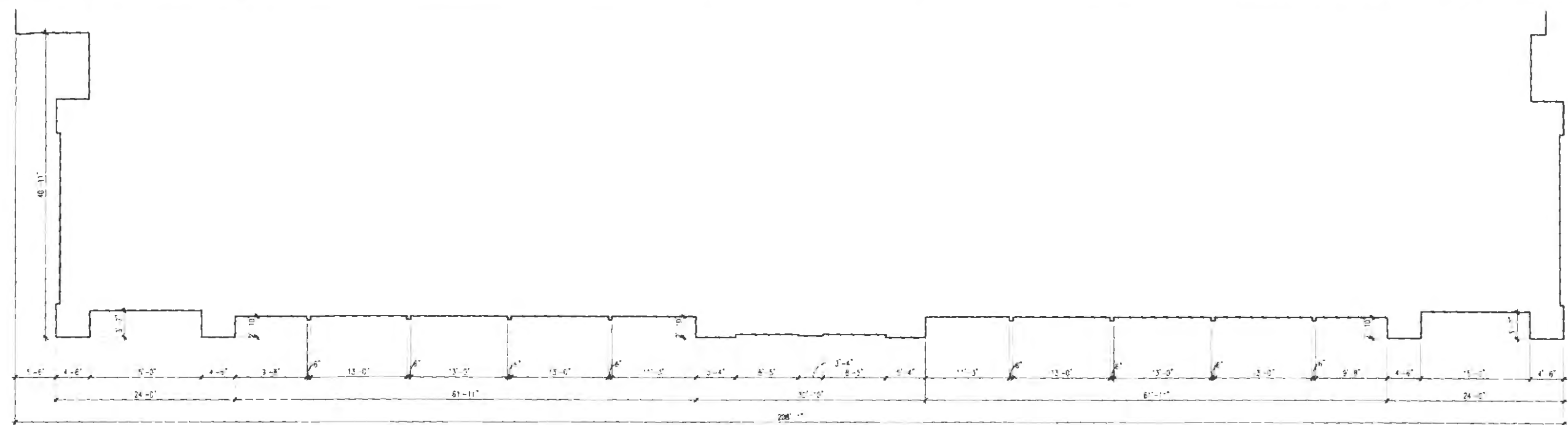
SOUTH ELEVATION
2% STONE



EAST ELEVATION
20% STONE



NORTH ELEVATION
28% STONE



NOTE: GRANITE, CAST STONE, BRICK, FEATHERLITE, STANDING SEAM METAL ROOF, GLASS AND MULLIONS TO MATCH EXISTING HOSPITAL

**PERKINS
+ WILL**

10100 N. Central Expressway
Dallas, TX 75228
T: 214.283.8700
F: 214.283.8701
www.perkinswill.com

**Presbyterian
Hospital of
Rockwall
MOB**

Horizon Rd at Rockwall Pkwy
Rockwall, TX 75032

In association with:

MEP
TALEX
6300 La Colma, Suite 100
Austin, TX 78752
T: 512.451.6579
F: 512.451.6678

STRUCTURAL ENGINEER
L.A. Fuess Partners, Inc.
3333 Lee Parkway, Suite 300
Dallas, TX 75219
T: 214.871.7010
F: 214.969.0065
CIVIL ENGINEER

LANDSCAPE
Michael S. Kendall
The Meadows Building
5646 Milton, Suite 735
Dallas, TX 75206
T: 214.871.7010
F: 214.969.0065

Revisions

NO.	ISSUE	DATE

Sheet Information

Date	12/14/2007
Job Number	142309.000
Drawn	DEW
Checked	DEW
Approved	DC
Title	

**EXTERIOR
ELEVATIONS**

8
581007.027

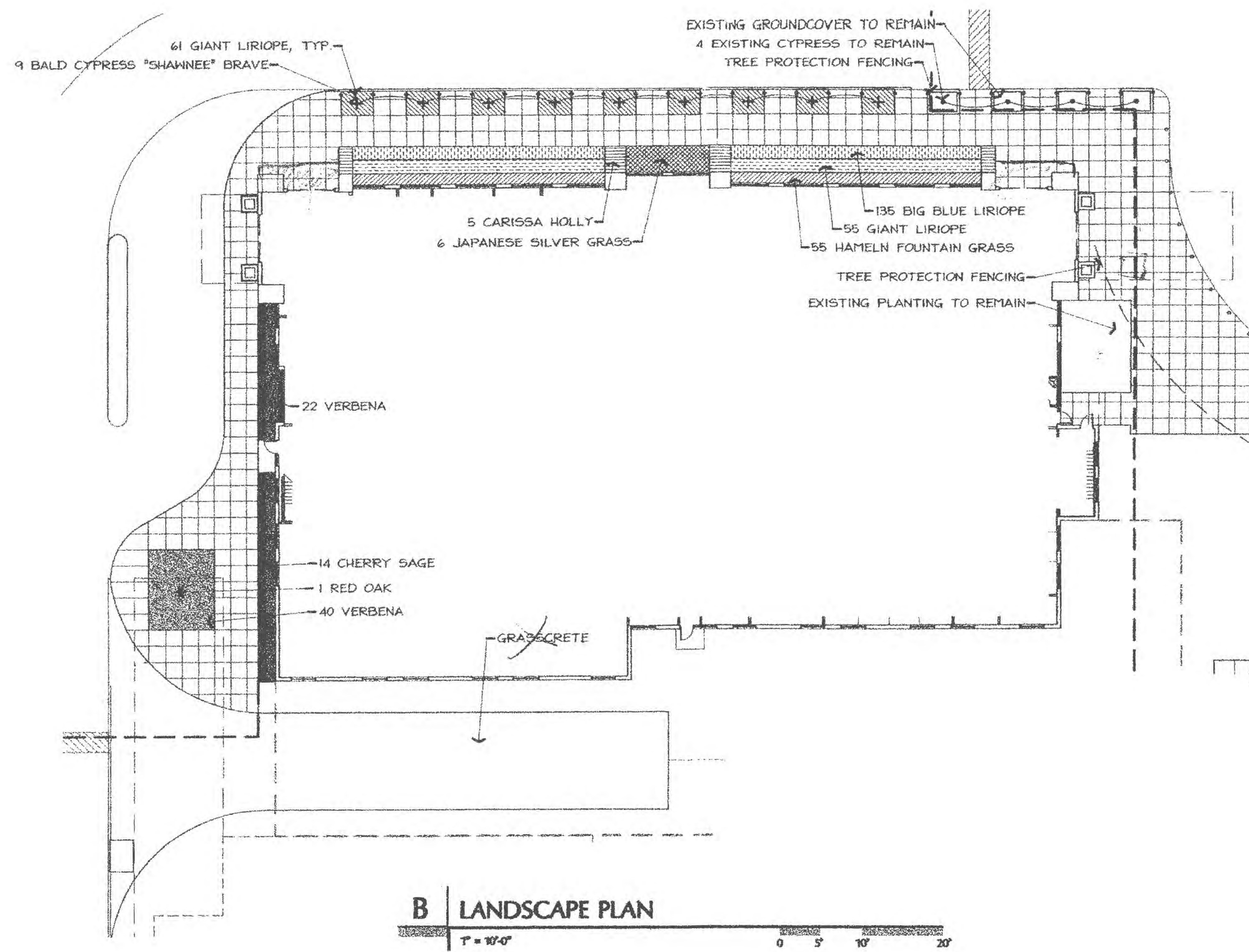
Sheet

A-301

NOT issued for Construction

Copyright © 2007 Perkins+Will

13.2007 - Submittal
 Dallas\142309.000 Presbyterian Hospital of Rockwall MOB\MOB\CAD\SHETS\A-301-FOR CITY.dwg
 ifwg



B LANDSCAPE PLAN

1" = 10'-0"

E PLANT LISTING - CITY REVIEW ONLY

BOTANIC NAME	COMMON NAME	SIZE	DESCRIPTION
QUERCUS SHUMARDII	SHUMARD OAK	3" CALIPER	LIMBED TO 7' CLEAR TRUNK
TAXODIUM DISTICHUM "SHAWNEE BRAVE"	BALD CYPRESS	4" CALIPER	LIMBED TO 7' CLEAR TRUNK
ILEX CORNUTA "CARISSA"	CARISSA HOLLY	3 GALLON	CONTAINER
SALVIA GREGGII	CHERRY SAGE	1 GALLON	CONTAINER
MISCANTHUS SINENSIS "MORNING LIGHT"	JAPANESE SILVER GRASS	1 GALLON	CONTAINER
PENNISETUM ALOPECUROIDES "HAMELN"	HAMELN FOUNTAIN GRASS	1 GALLON	CONTAINER
VERBENA CANADENSIS "HOMESTEAD PURPLE"	HOMESTEAD VERBENA	1 GALLON	CONTAINER

**Landscape Ordinance
Rockwall, Texas**

Mandatory Provisions

1. 10' landscape buffer	Provided.		
2. Screening of off-street loading areas	Provided.		
3. Residential Adjacency	6' masonry fencing	n/a	
4. Buffer landscaping		n/a	
5. Parking lot landscaping	5% required	82,000	*.05 4,100 required area 4,650 provided area
6. Open space	Office zoning requires 20%	128,200	*.20 25,640 square feet required 26,610 square feet provided

THIS PLANT LISTING IS FOR CITY OF ROCKWALL REVIEW ONLY. SEE SECTION 32 93 01 FOR A COMPLETE DESCRIPTION OF ALL PLANT MATERIAL.

C PLANTING GENERAL NOTES

1. ALL SOIL EXCAVATION MAY BE DISPOSED OF ON SITE.
2. IF A LIVE UTILITY IS ENCOUNTERED DURING EXCAVATION, CONTACT OWNER'S REPRESENTATIVE.
3. SEE PLANTING SPECIFICATIONS FOR A COMPLETE DESCRIPTION OF PLANT MATERIAL AND INSTALLATION.
4. ALL BEDS MUST BE LAID OUT AND APPROVED PRIOR TO THE INSTALLATION OF THE IRRIGATION FOR COORDINATION.
5. ALL PLANT MATERIAL SHALL BE STAKED AND APPROVED BY THE LANDSCAPE ARCHITECT PRIOR TO PLANT INSTALLATION.
6. ALL PLANTING DETAILS ARE TYPICAL.
7. ALL DISTURBED AREAS WITHIN THE PROJECT LIMITS MUST BE EITHER HYDROMULCHING OR SOLID SODDED UNLESS NOTED.

D PREPARATION GENERAL NOTES

1. PLAN PREPARED BY:
MICHAEL S. KENDALL
KENDALL + LANDSCAPE ARCHITECTURE
5646 MILTON STREET
SUITE 735
DALLAS, TEXAS 75206
(214) 739-3226
TEXAS LANDSCAPE ARCHITECT LICENSE NO. 1127
2. ALL AREAS SHALL BE IRRIGATED BY AN AUTOMATIC UNDERGROUND IRRIGATION SYSTEM PROVIDING 100% COVERAGE.
3. ALL REQUIRED TREES ARE 3" MINIMUM CALIPER.
4. ALL REQUIRED TREES FROM THE CITY APPROVED LISTING.

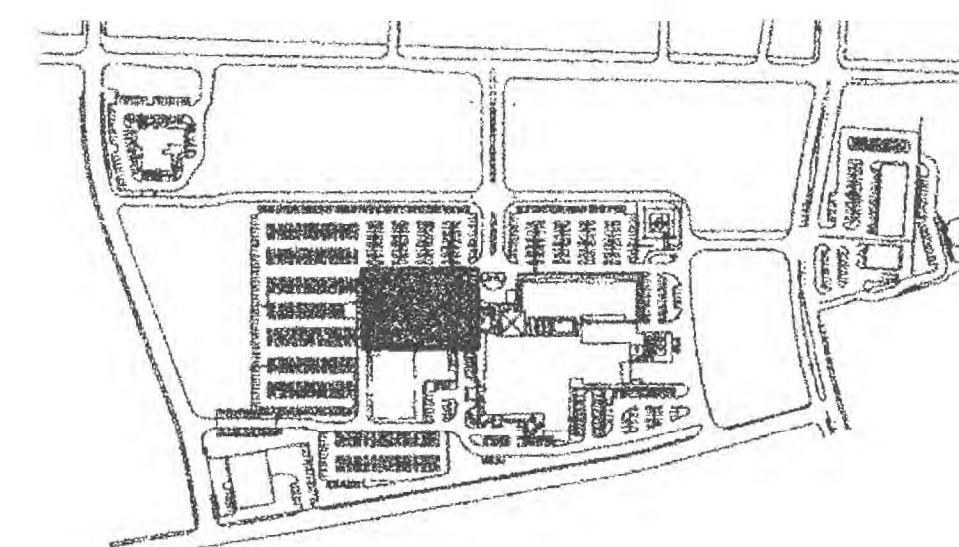
F TREE PRESERVATION NOTES

- CONTRACTOR SHALL ADHERE TO THE FOLLOWING TREE PROTECTION MEASURES:
1. THE CONTRACTOR SHALL ERECT A PLASTIC MESH FENCE A MINIMUM OF FOUR (4') FEET IN HEIGHT AROUND EACH TREE OR GROUP OF TREES TO PREVENT THE PLACEMENT OF DEBRIS OR FILL WITHIN THE DRIP LINE.
 2. DURING THE CONSTRUCTION PHASE OF DEVELOPMENT, THE CONTRACTOR SHALL PROHIBIT CLEANING, PARKING OR STORAGE OF EQUIPMENT OR MATERIALS UNDER THE CANOPY OF ANY TREE OR GROUP OF TREES BEING PRESERVED. THE CONTRACTOR SHALL NOT ALLOW THE DISPOSAL OF ANY WASTE MATERIAL SUCH AS, BUT NOT LIMITED TO, PAINT, OIL, SOLVENTS, ASPHALT, CONCRETE, MORTAR, ETC. IN THE CANOPY AREA.
 3. NO ATTACHMENTS OR WIRES OF ANY KIND, OTHER THAN THOSE OF A PROTECTIVE NATURE, SHALL BE ATTACHED TO ANY TREE.
 4. NO FILL OR EXCAVATION MAY OCCUR WITHIN THE DRIP LINE OF A TREE TO BE PRESERVED.

G SPECIFICATION LIST

THE FOLLOWING SPECIFICATIONS ARE PART OF THIS LANDSCAPE AND IRRIGATION CONTRACT:

32 80 01	LANDSCAPE IRRIGATION SYSTEM
32 84 01	IRRIGATION SLEEVES
32 91 00	GENERAL PLANTING
32 91 19	TOPSOIL AND FINISHED GRADING
32 92 23	SOLID SOD
32 93 01	PLANT LIST
32 93 33	SMALL SHRUB AND GROUND COVER PLANTING
32 93 43	TREE PLANTING



A KEY PLAN

NTS

**PERKINS
+ WILL**

1000 N Central Expressway
Dallas, TX 75201
T: 214.283.8700
F: 214.283.8701
www.perkinswill.com

**Presbyterian
Hospital of
Rockwall
MOB**

Horizon Rd at Rockwall Pkwy
Rockwall, TX 75032

in association with:

MEP
TALEX
6300 La Palma, Suite 100
Austin, TX 78752
T: 512.451.8579
F: 512.451.6678

STRUCTURAL ENGINEER

L.A. Fuess Partners, Inc.
3333 Lee Parkway, Suite 300
Dallas, TX 75219
T: 214.871.7010
F: 214.969.0065

CIVIL ENGINEER

**Pacheco Koch
Consulting Engineers**

8550 N-Central Expressway, Suite 1000
Dallas, TX 75206
T: 972.235.9544
F: 972.235.9544

LANDSCAPE

KENDALL

Landscape Architecture
The Meadows Building
5646 Milton, Suite 735
Dallas, TX 75206
T: 214.871.7010
F: 214.969.0065



4/24/06

Revisions

NO.	ISSUE	DATE

Sheet Information

Date	04-24-08
Job Number	142309.000
Drawn	DRG
Checked	MSK
Approved	MSK
Title	

Landscape Plan

Sheet

L1.1

Issued for Construction

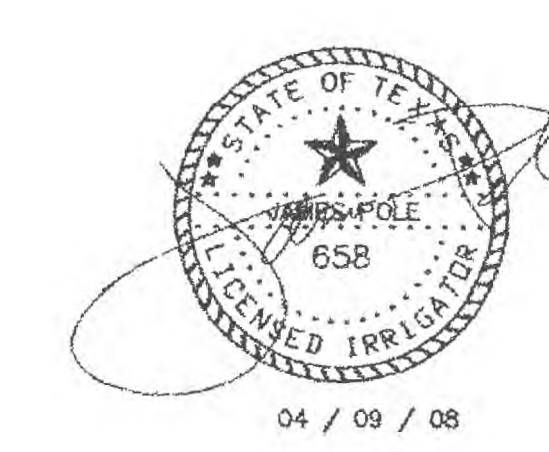
Copyright © 2007 Perkins+Will

James Pole
IRRIGATION CONSULTANTS

IRRIGATION DESIGN, CONSULTING, AND
LANDSCAPE WATER MANAGEMENT

TEXAS L.L.C. #658
100 W. OAK ST., SUITE 106
DENTON, TEXAS 76201

PHONE: 940.243.2384
FAX: 940.382.2475



**Presbyterian
Hospital of
Rockwall
MOB**

Horizon Rd at Rockwall Pkwy
Rockwall, TX 75032

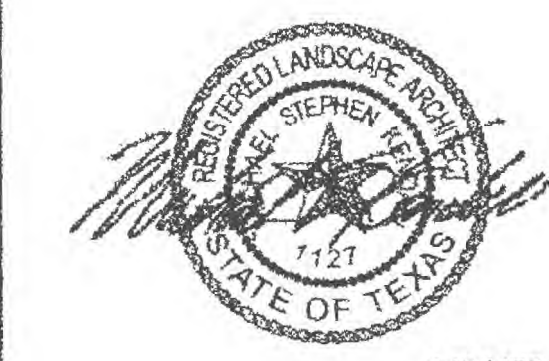
in association with:

MEP
TALEX
6300 La Calma, Suite 100
Austin, TX 78752
T: 512.451.8579
F: 512.451.6678

STRUCTURAL ENGINEER
L.A. Fuess Partners, Inc.
3333 Leo Parkway, Suite 300
Dallas, TX 75219
T: 214.871.7010
F: 214.969.0065

CIVIL ENGINEER
**Pacheco Koch
Consulting Engineers**
8350 N-Central Expressway, Suite 1000
Dallas, TX 75206
T: 972.235.9544
F: 972.235.9544

LANDSCAPE ARCHITECT
**KENDALL
Landscape Architecture**
The Meadows Building
5646 Milton, Suite 735
Dallas, TX 75206
T: 214.871.7010
F: 214.969.0065



4/24/08

Revisions

NO.	ISSUE	DATE

Sheet Information

Date	4-24-08
Job Number	142309.000
Drawn	JP
Checked	MSK
Approved	MSK
Title	

Irrigation Plan

Sheet

L2.1

Issued for Construction

Copyright © 2007 Perkins+Will

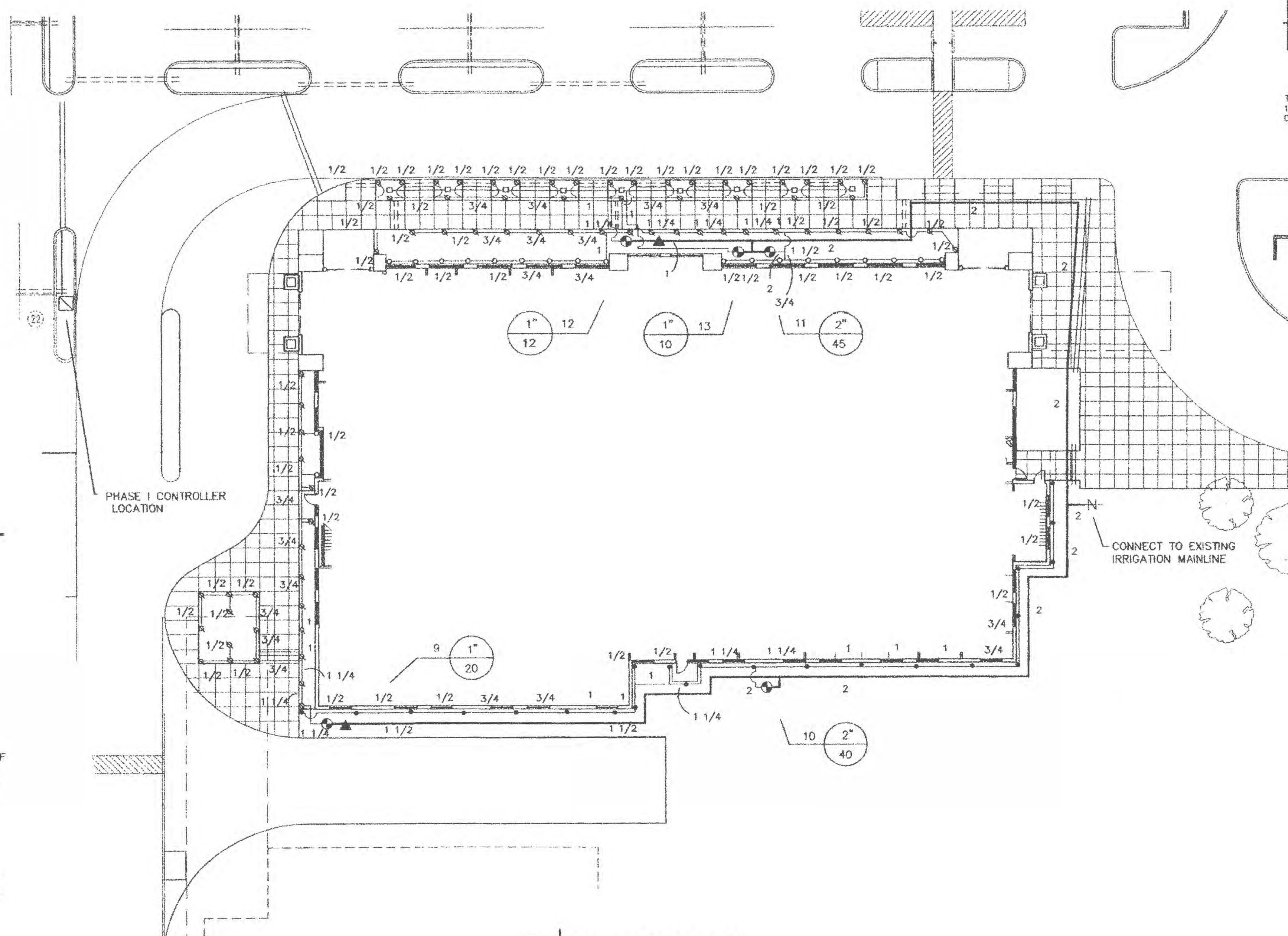
C IRRIGATION GENERAL NOTES

- SEE LANDSCAPE IRRIGATION SPECIFICATION FOR DESCRIPTION AND PRODUCT INFORMATION.
- SEE PAVING DRAWING FOR SLEEVING AND METER LOCATION.
- IRRIGATION COVERAGE SHALL BE 100% IN THE AREAS TO BE IRRIGATED.
- NO IRRIGATION HEAD OR VALVE SHALL BE WITHIN THREE (3') FEET OF A WATER UTILITY.
- ALL MAINLINE THREE (3') FEET FROM BACK OF THE CURB OR PAVING (EXCEPT FOR MAJOR INTERSECTIONS) UNLESS NOTED.
- OVER SPRAY WITHIN THE RIGHT-OF-WAY IS PROHIBITED.
- VERIFY A STATIC WATER PRESSURE OF 60 PSI AT THE POINT OF CONNECTION BEFORE START OF INSTALLATION. IF LOWER, NOTIFY THE LANDSCAPE ARCHITECT OR OWNER'S REPRESENTATIVE FOR INSTRUCTIONS. FAILURE TO DO SO WILL RESULT IN THE CONTRACTOR LIABLE FOR ALL EXPENSES IN MAKING THE SYSTEM OPERATIONAL.
- ALL PIPING SHALL BE FLUSHED OF ALL DEBRIS PRIOR TO INSTALLING HEADS AND NOZZLES.
- NO WIRE SPLICES WILL BE ALLOWED BETWEEN THE CONTROLLER AND THE SOLENOID VALVES. THE VALVE "COMMON" WIRE SHALL BE SPLICED ONLY AT THE SOLENOID VALVE AND WITHIN THE VALVE BOXES.
- CONTRACTOR TO ARRANGE VALVE BOXES IN A STRAIGHT LINE AND EVENLY SPACED AND AT NO TIME CLOSER THAN 3" FROM ANY HARDSCAPE. SEE DETAILS.

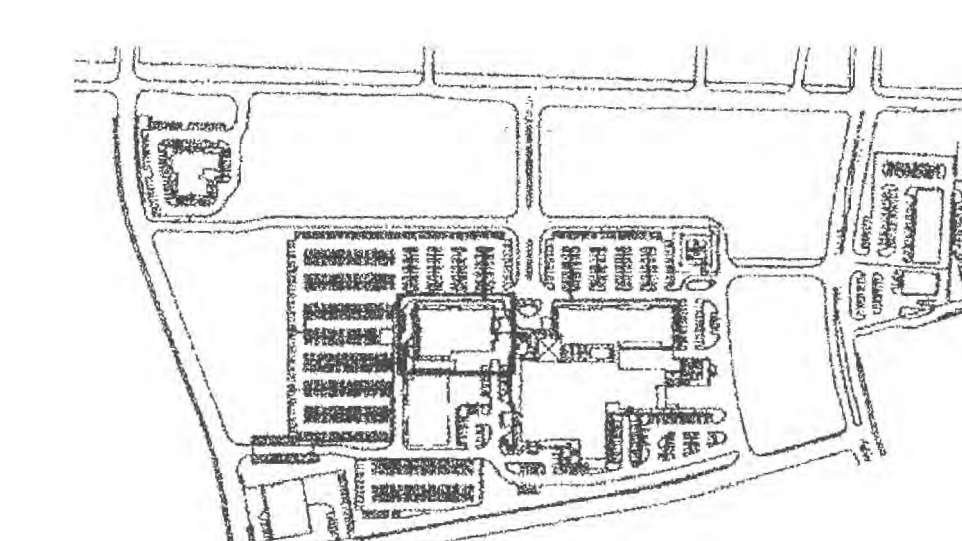
D IRRIGATION LEGEND

- ◻ RAINBIRD #1404 PRESSURE COMPENSATING BUBBLER NOZZLE
- RAINBIRD #1804 POP UP SPRAY HEAD WITH 8" MPR NOZZLE UNLESS NOTED OTHERWISE.
- RAINBIRD #1804 POP UP SPRAY HEAD WITH MPR SERIES NOZZLE AS NOTED BELOW
- ⊗ RAINBIRD #1812 POP UP SPRAY HEAD WITH MPR SERIES NOZZLE AS NOTED BELOW
- ⊕ RAINBIRD PEB SERIES ELECTRIC REMOTE CONTROL VALVE
- ▲ RAINBIRD #3RC QUICK COUPLING VALVE
- ⊕ 2" SPEARS SCH. 80 PVC BALL VALVE AT CONNECTION TO EXISTING MAINLINE
- ◻ EXISTING HUNTER ICC-2400 SERIES AUTOMATIC CONTROLLER W/ MINI-CLICK RAIN & FREEZE SENSORS
- CLASS 200 PVC MAINLINE PIPE
- CLASS 200 (EXCEPT 1/2 INCH #315) PVC LATERAL PIPE
- CLASS 200 SLEEVE PIPES

L.I.C. SHALL SELECT MPR SERIES SPRAY NOZZLES FOR "HEAD-TO-HEAD" COVERAGE, ADJUSTED FOR MINIMUM OVERSPRAY ONTO WALLS AND WALKS. NO OVERSPRAY INTO STREETS IS PERMITTED.



B IRRIGATION PLAN



A KEY PLAN

NTS

