

THE SOUTHLAND CORPORATION
TO
CHARLES W. FALLS
VOL. 63, PG. 282
D.R.R.C.T.

LOT 3

N 0° 24' 52" W
10.00'

RESIDUE OF
LOT 2

RESIDUE OF
LOT 1

N 89° 07' 14" E 100.00'

RESIDUE OF
LOT 4

S 89° 07' 14" W
20.00'

0.10 ACRES

TRACT 6
TED & MAURINE CAIN
TO
THE CAIN FAMILY TRUST
VOL. 1328, PG. 78
D.R.R.C.T.

0.08 ACRES
LINA HAN & KANG CHEN
TO
KING PACIFIC, INC.
VOL. 3415, PG. 247
D.R.R.C.T.

PART OF
LOT 4

N 0° 24' 52" W
40.00'

1/2" IRS
• BLD
CORNER

PART OF
LOT 2

PART OF
LOT 1

COMMERCIAL BUILDING
103 N. FANNIN STREET

N 89° 07' 14" E 70.00'

1/2" IRS
• BLD
CORNER

LOT 5

S 89° 07' 14" W 80.00'

BLOCK K

GRAVEL

GRAVEL

0.15 ACRES

TRACT 14
TED & MAURINE CAIN
TO
THE CAIN FAMILY TRUST
VOL. 1328, PG. 78
D.R.R.C.T.

WM TELD
GAS

H. L. & MARY J. WILLIAMS
TO
CHARLES W. FALLS
VOL. 82, PG. 535
D.R.R.C.T.

N 0° 24' 52" W 100.00'

PART OF LOT 7

ORIGINAL LOT LINE

LOT 8

COMMERCIAL BUILDING
101 N. FANNIN STREET

CONC

PP

O/H ELEC LINE

CONC

LOT 6

RESIDUE OF LOT 7

75.3

20.3

N 0° 24' 52" W 100.00'

PART OF LOT 7

ORIGINAL LOT LINE

LOT 8

COMMERCIAL BUILDING
101 N. FANNIN STREET

CONC

PP

O/H ELEC LINE

CONC

RESIDUE OF LOT 7

RESIDUE OF LOT 7

20.3

N 0° 24' 52" W 100.00'

PART OF LOT 7

ORIGINAL LOT LINE

LOT 8

COMMERCIAL BUILDING
101 N. FANNIN STREET

CONC

PP

O/H ELEC LINE

CONC

RESIDUE OF LOT 7

RESIDUE OF LOT 7

20.3

N 0° 24' 52" W 100.00'

PART OF LOT 7

ORIGINAL LOT LINE

LOT 8

COMMERCIAL BUILDING
101 N. FANNIN STREET

CONC

PP

O/H ELEC LINE

CONC

RESIDUE OF LOT 7

RESIDUE OF LOT 7

20.3

N 0° 24' 52" W 100.00'

PART OF LOT 7

ORIGINAL LOT LINE

LOT 8

COMMERCIAL BUILDING
101 N. FANNIN STREET

CONC

PP

O/H ELEC LINE

CONC

RESIDUE OF LOT 7

RESIDUE OF LOT 7

20.3

N 0° 24' 52" W 100.00'

PART OF LOT 7

ORIGINAL LOT LINE

LOT 8

COMMERCIAL BUILDING
101 N. FANNIN STREET

CONC

PP

O/H ELEC LINE

CONC

RESIDUE OF LOT 7

RESIDUE OF LOT 7

20.3

N 0° 24' 52" W 100.00'

PART OF LOT 7

ORIGINAL LOT LINE

LOT 8

COMMERCIAL BUILDING
101 N. FANNIN STREET

CONC

PP

O/H ELEC LINE

CONC

RESIDUE OF LOT 7

RESIDUE OF LOT 7

20.3

N 0° 24' 52" W 100.00'

PART OF LOT 7

ORIGINAL LOT LINE

LOT 8

COMMERCIAL BUILDING
101 N. FANNIN STREET

CONC

PP

O/H ELEC LINE

CONC

RESIDUE OF LOT 7

RESIDUE OF LOT 7

20.3

N 0° 24' 52" W 100.00'

PART OF LOT 7

ORIGINAL LOT LINE

LOT 8

COMMERCIAL BUILDING
101 N. FANNIN STREET

CONC

PP

O/H ELEC LINE

CONC

RESIDUE OF LOT 7

RESIDUE OF LOT 7

20.3

N 0° 24' 52" W 100.00'

PART OF LOT 7

ORIGINAL LOT LINE

LOT 8

COMMERCIAL BUILDING
101 N. FANNIN STREET

CONC

PP

O/H ELEC LINE

CONC

RESIDUE OF LOT 7

RESIDUE OF LOT 7

20.3

N 0° 24' 52" W 100.00'

PART OF LOT 7

ORIGINAL LOT LINE

LOT 8

COMMERCIAL BUILDING
101 N. FANNIN STREET

CONC

PP

O/H ELEC LINE

CONC

RESIDUE OF LOT 7

RESIDUE OF LOT 7

20.3

N 0° 24' 52" W 100.00'

PART OF LOT 7

ORIGINAL LOT LINE

LOT 8

COMMERCIAL BUILDING
101 N. FANNIN STREET

CONC

PP

O/H ELEC LINE

CONC

RESIDUE OF LOT 7

RESIDUE OF LOT 7

20.3

N 0° 24' 52" W 100.00'

PART OF LOT 7

ORIGINAL LOT LINE

LOT 8

COMMERCIAL BUILDING
101 N. FANNIN STREET

CONC

PP

O/H ELEC LINE

CONC

RESIDUE OF LOT 7

RESIDUE OF LOT 7

20.3

N 0° 24' 52" W 100.00'

PART OF LOT 7

ORIGINAL LOT LINE

LOT 8

COMMERCIAL BUILDING
101 N. FANNIN STREET

CONC

PP

O/H ELEC LINE

CONC

RESIDUE OF LOT 7

RESIDUE OF LOT 7

20.3

N 0° 24' 52" W 100.00'

PART OF LOT 7

ORIGINAL LOT LINE

LOT 8

COMMERCIAL BUILDING
101 N. FANNIN STREET

CONC

PP

O/H ELEC LINE

CONC

RESIDUE OF LOT 7

RESIDUE OF LOT 7

20.3

N 0° 24' 52" W 100.00'

PART OF LOT 7

ORIGINAL LOT LINE

LOT 8

COMMERCIAL BUILDING
101 N. FANNIN STREET

CONC

PP

O/H ELEC LINE

CONC

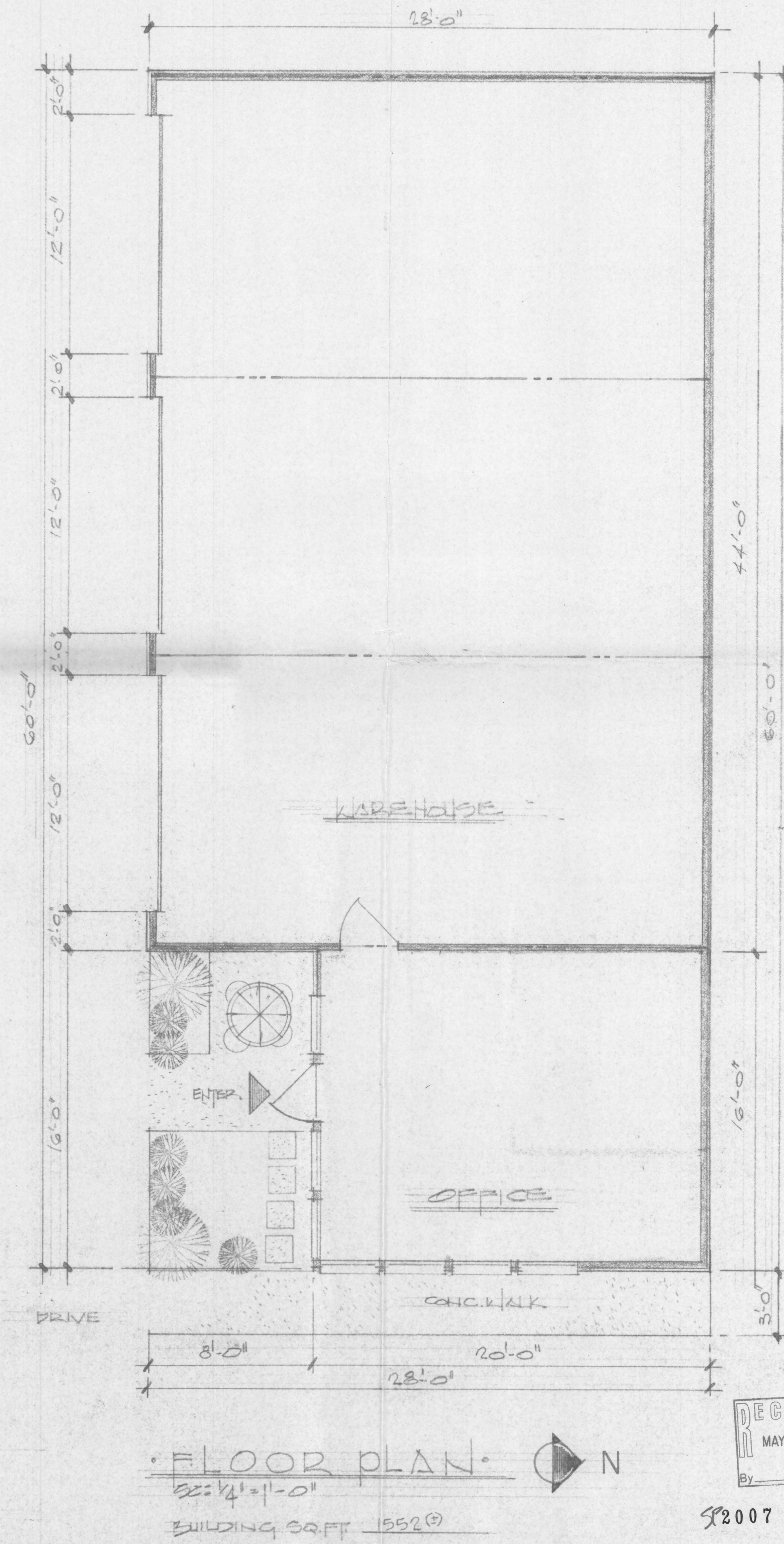
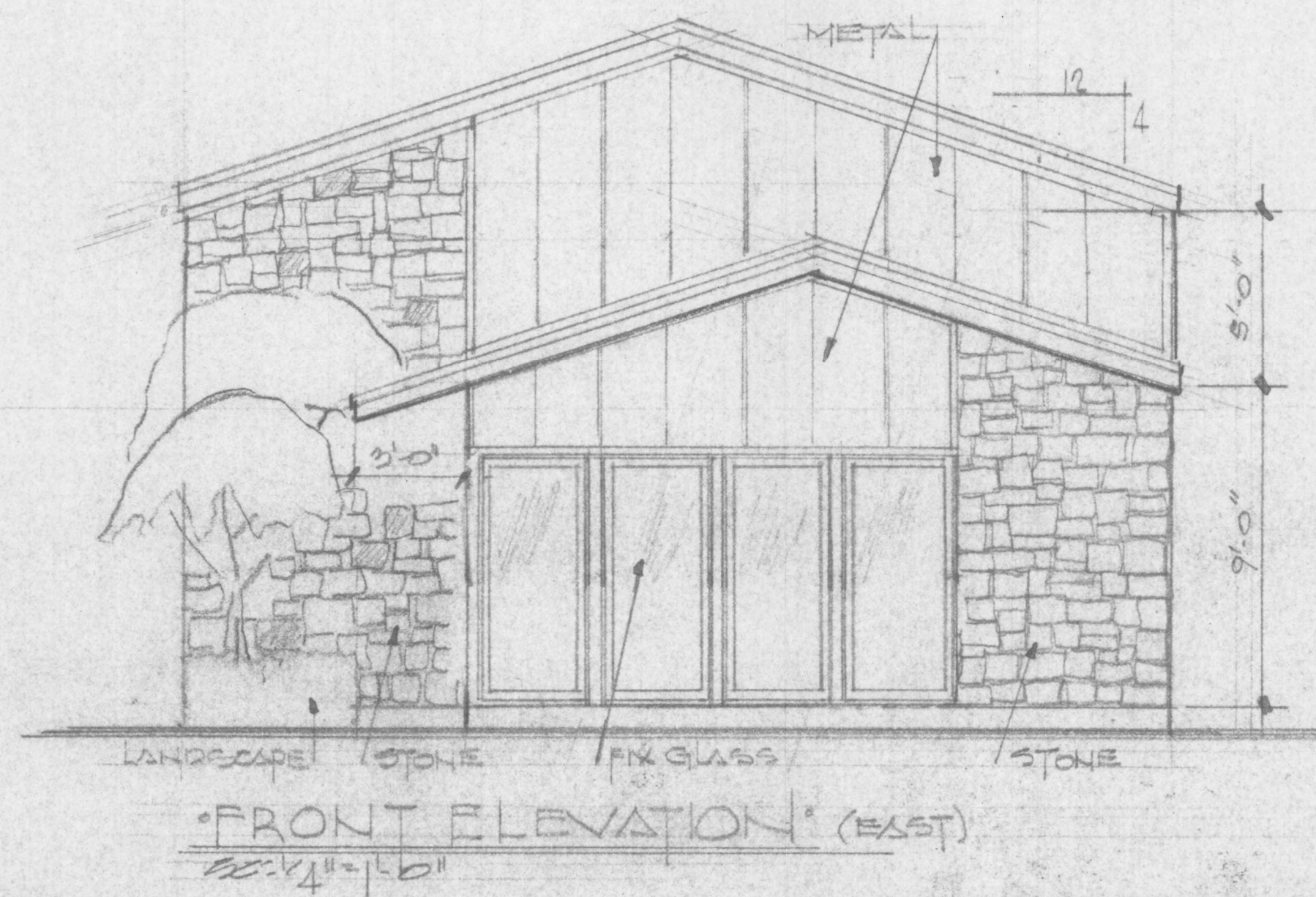
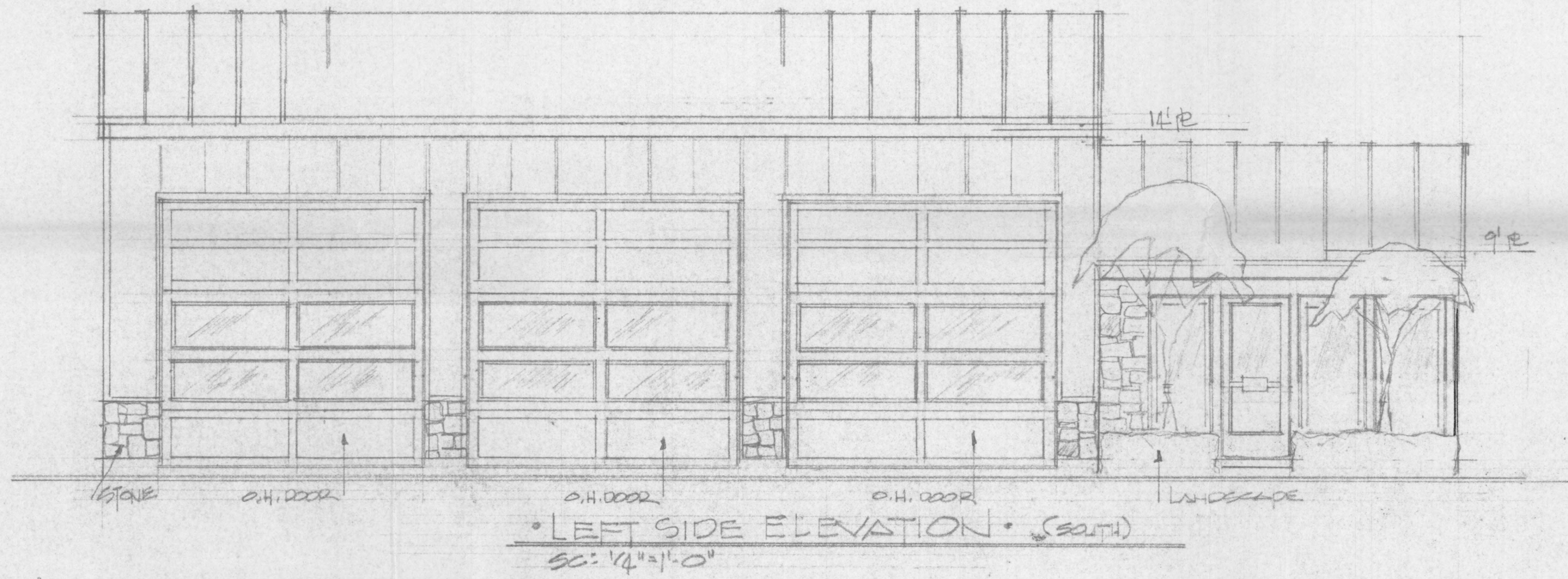
RUSK STREET

O/H ELEC LINE

N. FANNIN STREET

2007 011

RECEIVED
MAY 21 2007



RECEIVED
MAY 21 2007

2007 011

DISCLAIMER:
We warrant that the drawings were prepared by us or under our direct supervision and that they conform to the requirements of the applicable building codes. We do not warrant that the drawings will result in a building that is free from all structural failures or damage to existing or new structures. Also, we are not responsible for any existing non-visible changes that have to be made during construction, such as plumbing, HVAC or electrical.

A BUILDING FOR
THE CAIN REVOCABLE FAMILY TRUST
ROCKWALL, TX.

BOBBY
N. THOMPSON
DESIGNERS
& ASSOCIATES
P.O. BOX 000915 DALLAS, TX 75200-0915
A.C. 972-233-1591

REV: _____
JOB: 0700074
PLAN: custom
SHT: A-1