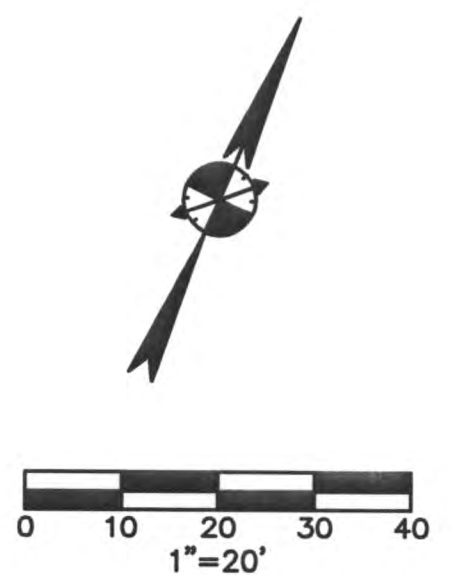


CAUTION !!
 CONTRACTOR IS TO CONTACT TEXAS ONE-CALL SYSTEM (1-800-245-4845) OR OTHER UTILITY LOCATING SERVICES AT LEAST 48 HOURS PRIOR TO CONSTRUCTION ACTIVITIES. BURY & PARTNERS IS NOT RESPONSIBLE FOR KNOWING ALL EXISTING UTILITIES IN THE PROJECT AREA NOR FOR DEPICTING THE EXACT LOCATIONS OF UTILITIES ON THESE DRAWINGS.



KEY NOTES:

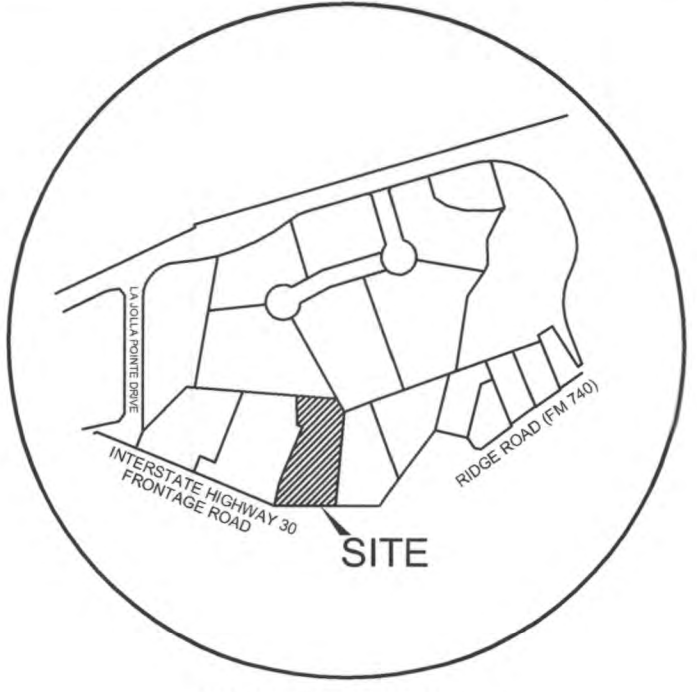
- ① BOLLARD (SEE DETAIL)
- ② SIDEWALK (SEE DETAIL)
- ③ PAVEMENT (SEE DETAIL)
- ④ CURB (SEE DETAIL)
- ⑤ HANDICAP PARKING (SEE DETAIL)
- ⑥ HANDICAP RAMP (SEE DETAIL)
- ⑦ HANDICAP SIGN (SEE DETAIL)
- ⑧ 4" YELLOW STRIPING (SEE NOTE 4, THIS SHEET)
- ⑨ WHEEL STOP (SEE DETAIL)
- ⑩ MENU BOARD (SEE DETAIL 6.11)
- ⑪ DUMPSTER ENCLOSURE (SEE STRUCTURAL PLANS)
- ⑫ GREASE TRAP (SEE MEP PLANS)
- ⑬ TRAFFIC CLEARANCE BAR (SEE DETAIL)
- ⑭ EXISTING FIRE HYDRANT
- ⑮ ROOF ACCESS LADDER (SEE ARCH)
- ⑯ FIRE LANE STRIPING (SEE DETAIL)
- ⑰ 4" YELLOW STRIPING @ 45°
- ⑱ OUTDOOR PATIO AREA
- ⑲ FUTURE EXPANSION AREA
- ⑳ METAL RAILING & GATE (SEE ARCH)
- ㉑ LIGHT POST (SEE PHOTOMETRIC PLAN)

LEGEND

EXISTING	PROPOSED	DESCRIPTION
●	○	1/2" IRON ROD FOUND
○	○	1/2" IRON ROD SET
○	○	IRON PIPE FOUND
○	○	NAIL FOUND
○	○	COMPUTED POINT
○	○	MONUMENT FOUND
○	○	POINT OF BEGINNING
○	○	BENCHMARK
○	○	RECORD INFORMATION
○	○	LIGHT POLE
○	○	POWER POLE
○	○	DOWN GUY
○	○	FIRE HYDRANT
○	○	WATER VALVE
○	○	WATER METER
○	○	GAS METER
○	○	MONITORING WELL
○	○	GAS VALVE
○	○	WOOD FENCE
○	○	CHAIN LINK FENCE
○	○	WIRE FENCE
○	○	ELECTRICAL MANHOLE
○	○	WASTEWATER MANHOLE
○	○	STORMSEWER MANHOLE
○	○	WATER MANHOLE
○	○	CLEAN OUT
○	○	DRAINAGE INLET
○	○	CURB INLET
○	○	CURB & GUTTER
○	○	FIRE LANE
○	○	HANDICAPPED PARKING SPACE
○	○	SIGN
○	○	VARIABLE HEIGHT C.M.U. BUFFERING WALL
○	○	ELECTRIC PULL BOX
○	○	ELECTRIC METER
○	○	ELECTRIC TRANSFORMER
○	○	TELEPHONE SERVICE BOX
○	○	BOLLARD
○	○	OVER HEAD ELEC. LINE
○	○	OVER HEAD TELEPHONE
○	○	STORM SEWER LINE
○	○	WATER LINE
○	○	WASTEWATER LINE
○	○	FORCE MAIN
○	○	UNDERGROUND ELECTRIC
○	○	UNDERGROUND TELEPHONE
○	○	GAS LINE
○	○	PROPERTY LINE
○	○	LEASE LINE
○	○	CONTOUR
○	○	SPOT ELEVATION
○	○	TOP OF CURB ELEVATION
○	○	EDGE OF PAVEMENT ELEVATION
○	○	GUTTER ELEVATION
○	○	CUT/FILL SLOPES
○	○	FLOW DIRECTION
○	○	CONCRETE SURFACE
○	○	LEVEL AREA (MAX 2% SLOPE ANY DIRECTION)
○	○	NUMBER OF PARKING SPACES
○	○	LIMITS OF CONSTRUCTION
○	○	FIRE LANE
○	○	LIGHT POLE FIXTURES 4' FROM BACK-OF-CURB

SITE SUMMARY

LOT AREA : 1.37 Ac., 59,688.62 Sq. Ft.	
ZONED: C (COMMERCIAL) & IH 30 OVERLAY	
PROPOSED USE: RESTAURANT	
FEMA MAP: 480547-0005G, DATED JUNE 16, 1992	
PARKING REQUIRED (1 PER 100 SF)	4,145/100=42 SPACES
PARKING PROVIDED	86 SPACES
HANDICAP PARKING REQUIRED	2 STD./1 VAN
HANDICAP PARKING PROVIDED	2 STD./1 VAN
BUILDING SQUARE FOOTAGE	3,745 SQ. FT.
BUILDING HEIGHT	28'-00"
LOT COVERAGE	6.28%
SQUARE FOOTAGE OF IMPERVIOUS SURFACE (15% OF TOTAL SITE AREA)	38,978.03 SQ. FT.
LANDSCAPE/OPEN SPACE REQUIRED	8,950.29 SQ. FT.
LANDSCAPE/OPEN SPACE PROVIDED	20,701.59 SQ. FT.
OPEN SPACE	34.69%



VICINITY MAP
 NTS

- NOTES:**
- ALL DIMENSIONS ARE TO FACE OF CURB.
 - ALL RADII ARE 2.0' UNLESS OTHERWISE NOTED
 - ALL PROPOSED PARKING SHALL BE 9.0'x18.0' UNLESS OTHERWISE NOTED.
 - STRIPING SHALL BE SHERWIN WILLIAMS PRO-MAR TRAFFIC MARKING PAINT - YELLOW.
 - LIGHT POLE FOUNDATION, STAND AND FIXTURE TO MATCH EXISTING LIGHTING WITHIN SHOPPING CENTER. LIGHT POLE FIXTURES TO BE LOCATED FOUR FEET FROM BACK-OF-CURB.

LEGAL DESCRIPTION:

A 1.37 ACRE TRACT OF LAND SITUATED IN THE CITY OF ROCKWALL, ROCKWALL COUNTY, TEXAS, AND BEING A PORTION OF LOT 2, BLOCK A, STEAK 'N SHAKE ADDITION, ACCORDING TO PLAT RECORDS IN CABINET F, SLIDE 229-230, AND BEING A PORTION OF LOT 1, BLOCK A, LA JOLLA POINTE ADDITION, ACCORDING TO PLAT RECORDS IN CABINET F, SLIDE 255, SAID TRACT ALSO BEING A PART OF THE LA JOLLA POINTE ADDITION-PHASE 2 ACCORDING TO PLAT RECORDS IN CABINET G, SLIDE 131 AND 132.

BENCHMARK NOTE:

BRASS MONUMENT IN CONCRETE 1 (ONE) FOOT WEST OF BACK OF CURB, 8 FEET NORTHEAST OF AN EXISTING WYE INLET, 40 FEET SOUTH OF ENTRANCE OF LAKESIDE VILLAGE ON VILLAGE ROAD. ELEVATION=506.05

FILE COPY



2007 007



Bury & Partners
 ENGINEERING SOLUTIONS
 5810 Parkway Hill Road, Suite 100
 Dallas, Texas 75230
 Tel: (972)981-0011 Fax: (972)981-0278
 BuryPartners@BYP.com © Copyright 2007

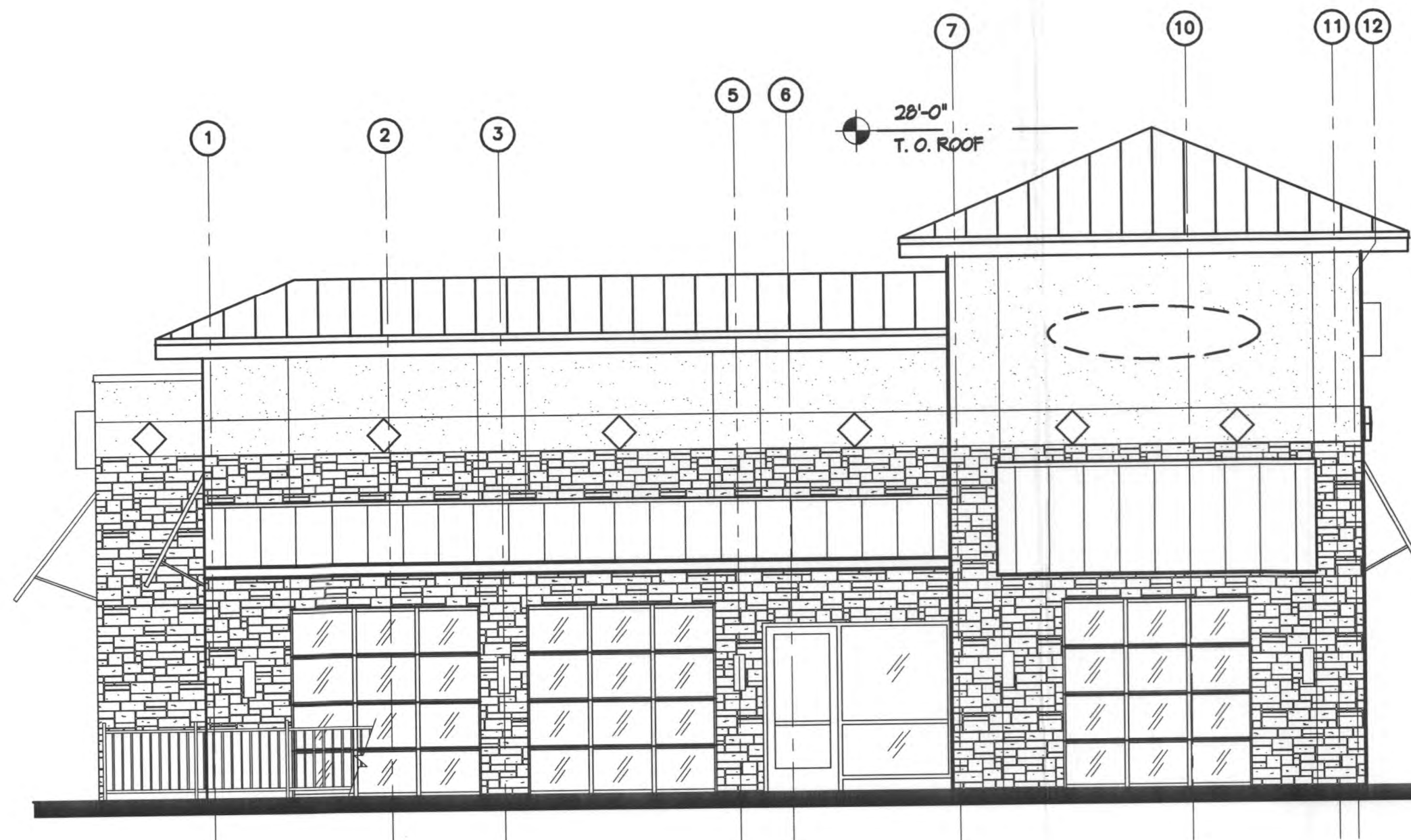
TACO CABANA
 THE ORIGINAL MEXICAN PATIO CAFE

SITE PLAN
TACO CABANA #
 PROPOSED LOT 14, BLOCK A
 ROCKWALL, TEXAS

Scale: 1"=20'
 Date: 03-30-07
 Designed By: BPI
 Drawn By: MRG
 Checked By: SMH
 File: F:\50109-133\109133SPN
 Project No.: 50109-133

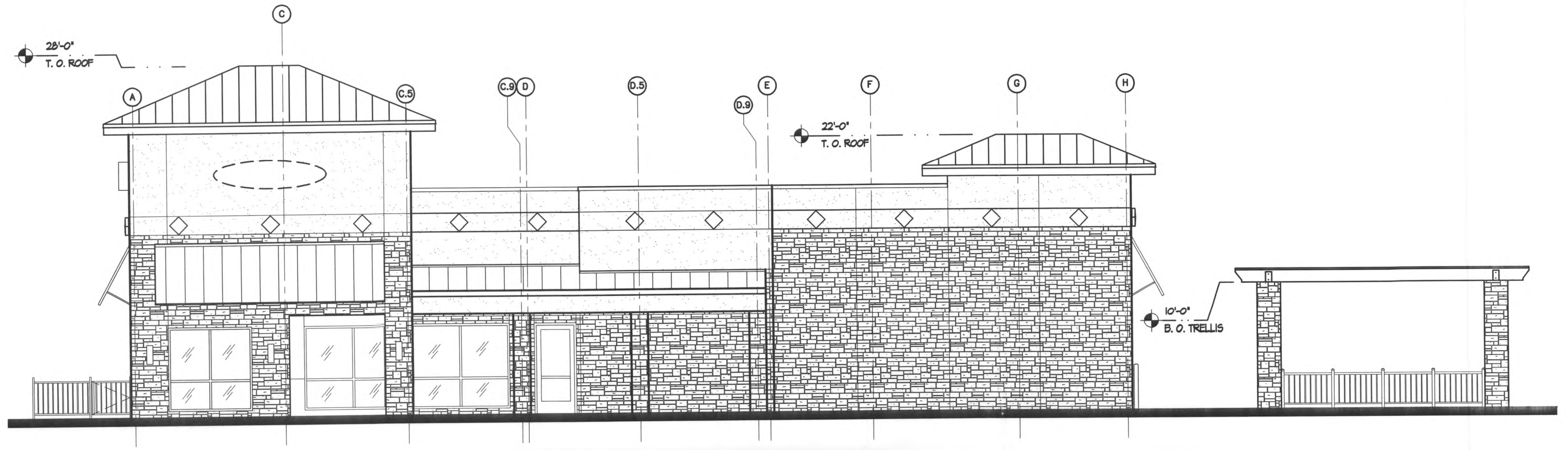
SHEET
C3

ROCKWALL, TEXAS



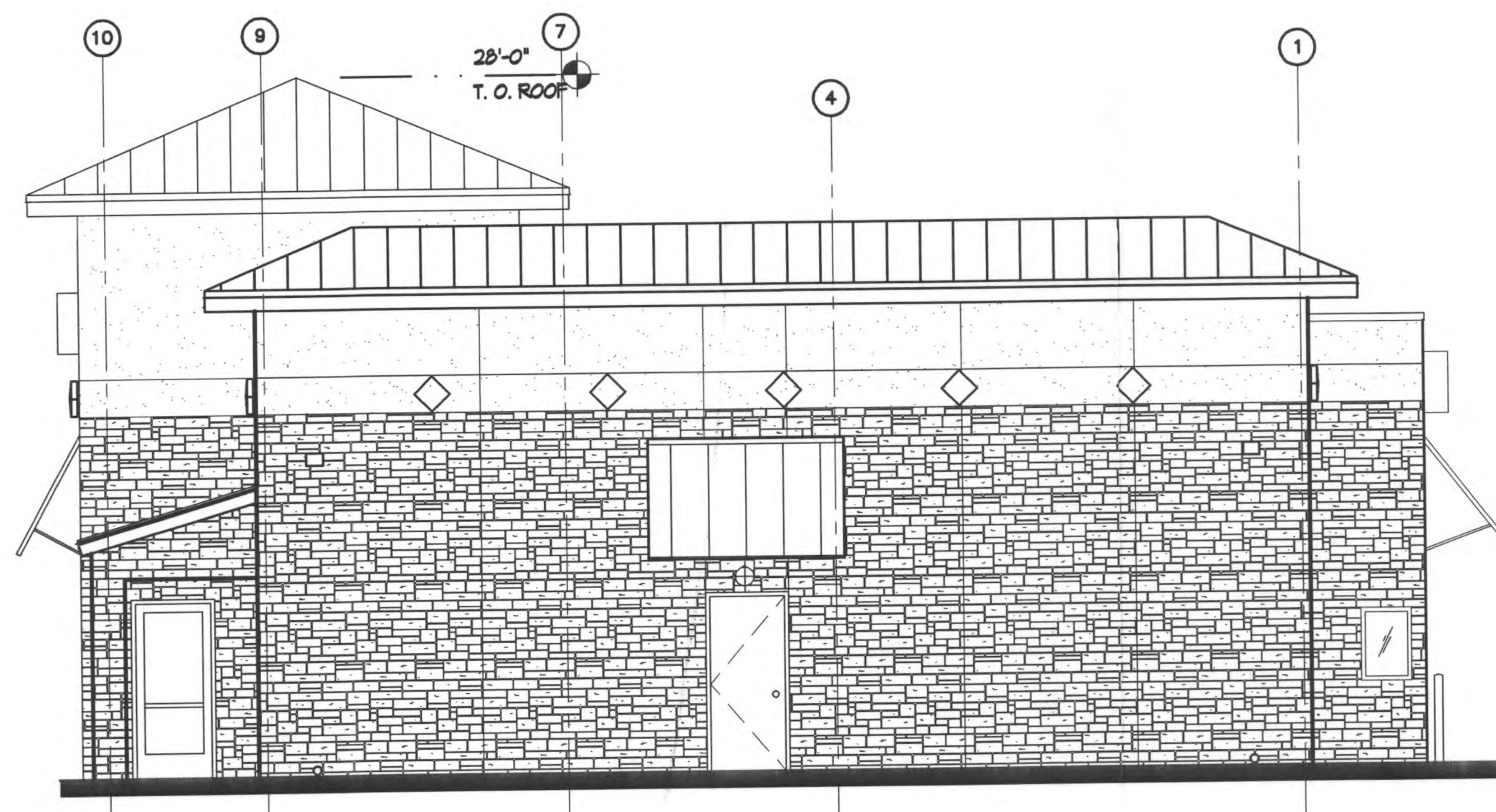
4 ELEVATION FRONT
 SCALE: N.T.S.

TOTAL:	1025	
GLAZING:	249	24%
STONE:	507	49%
STUCCO:	269	26%



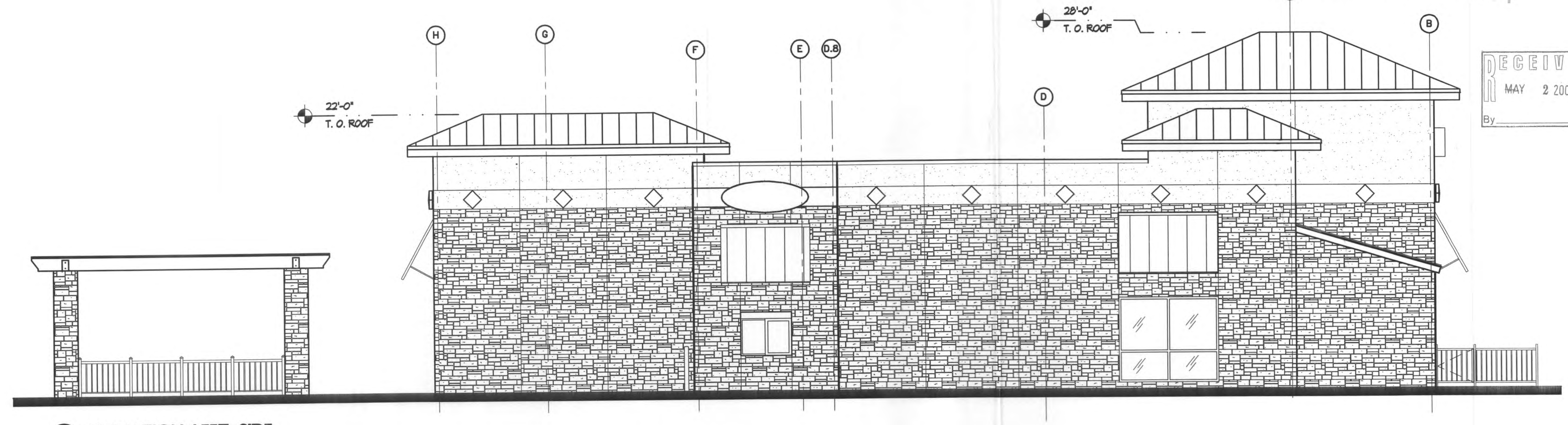
3 ELEVATION RIGHT SIDE
 SCALE: N.T.S.

TOTAL:	1564	10%
GLAZING:	164	54%
STONE:	848	35%
STUCCO:	552	



2 ELEVATION REAR SIDE
 SCALE: N.T.S.

TOTAL:	1036	
GLAZING:	54	5%
STONE:	687	66%
STUCCO:	295	29%



1 ELEVATION LEFT SIDE
 SCALE: N.T.S.

TOTAL:	1483	4%
GLAZING:	66	72%
STONE:	1078	34%
STUCCO:	339	

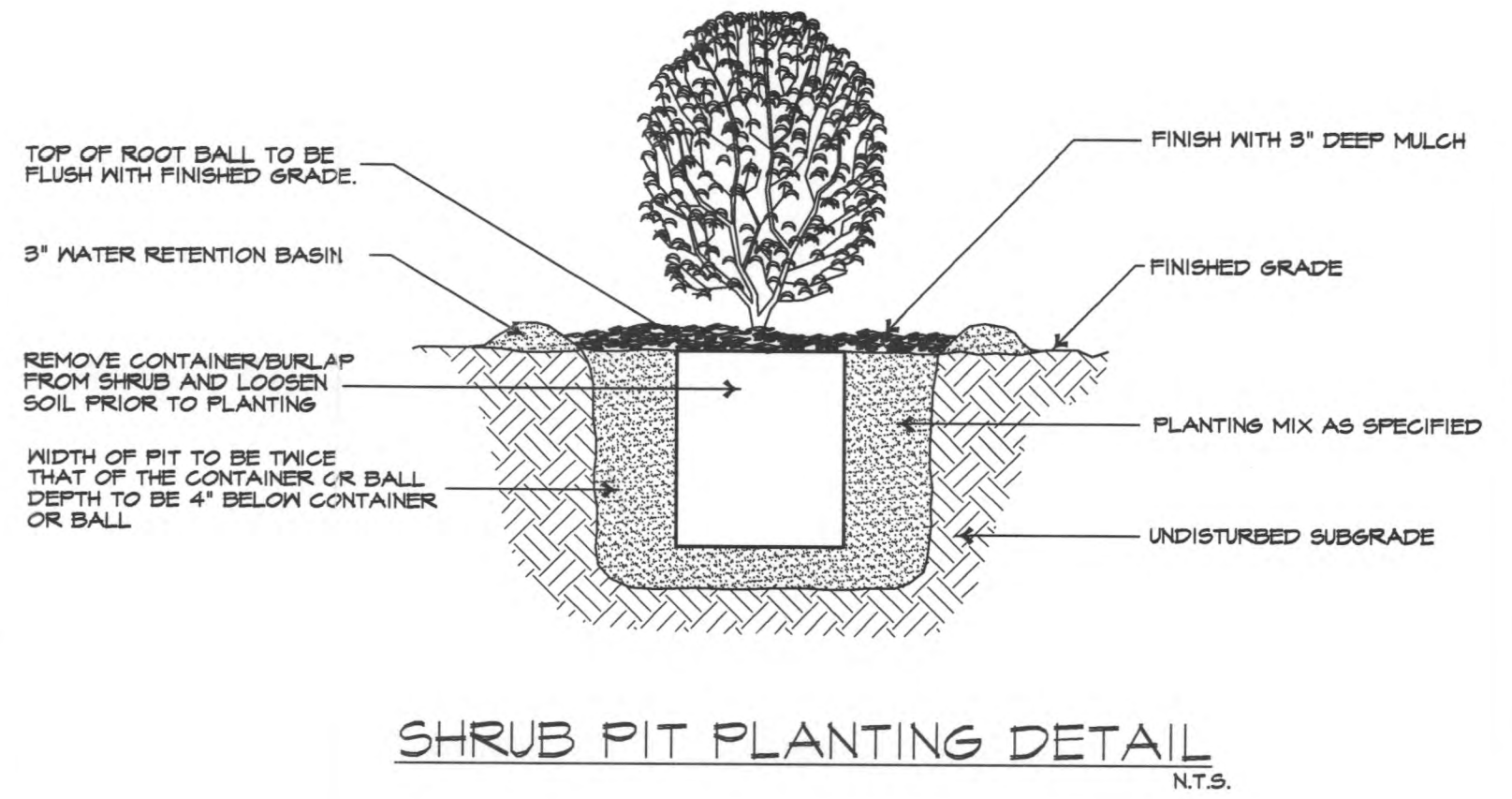
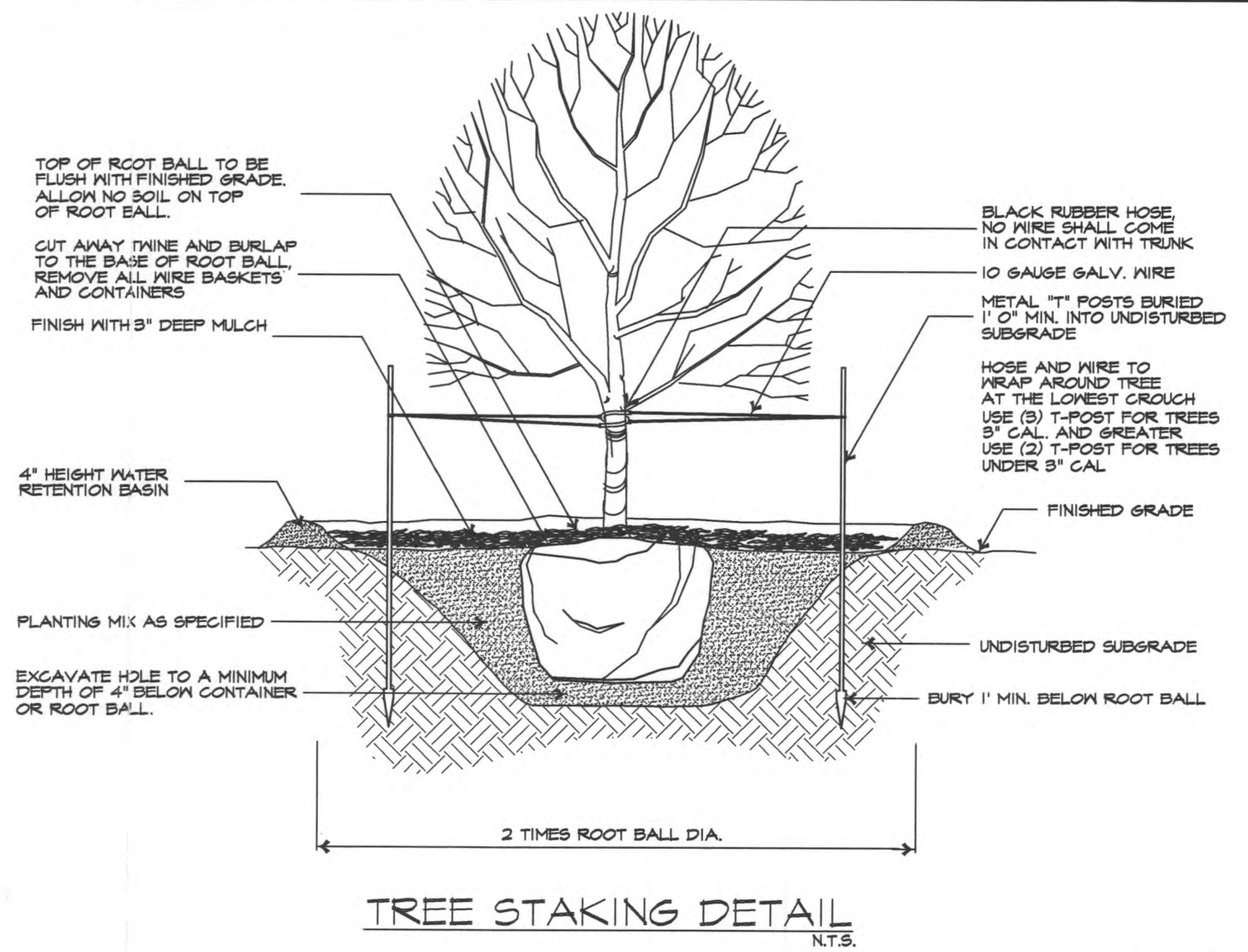
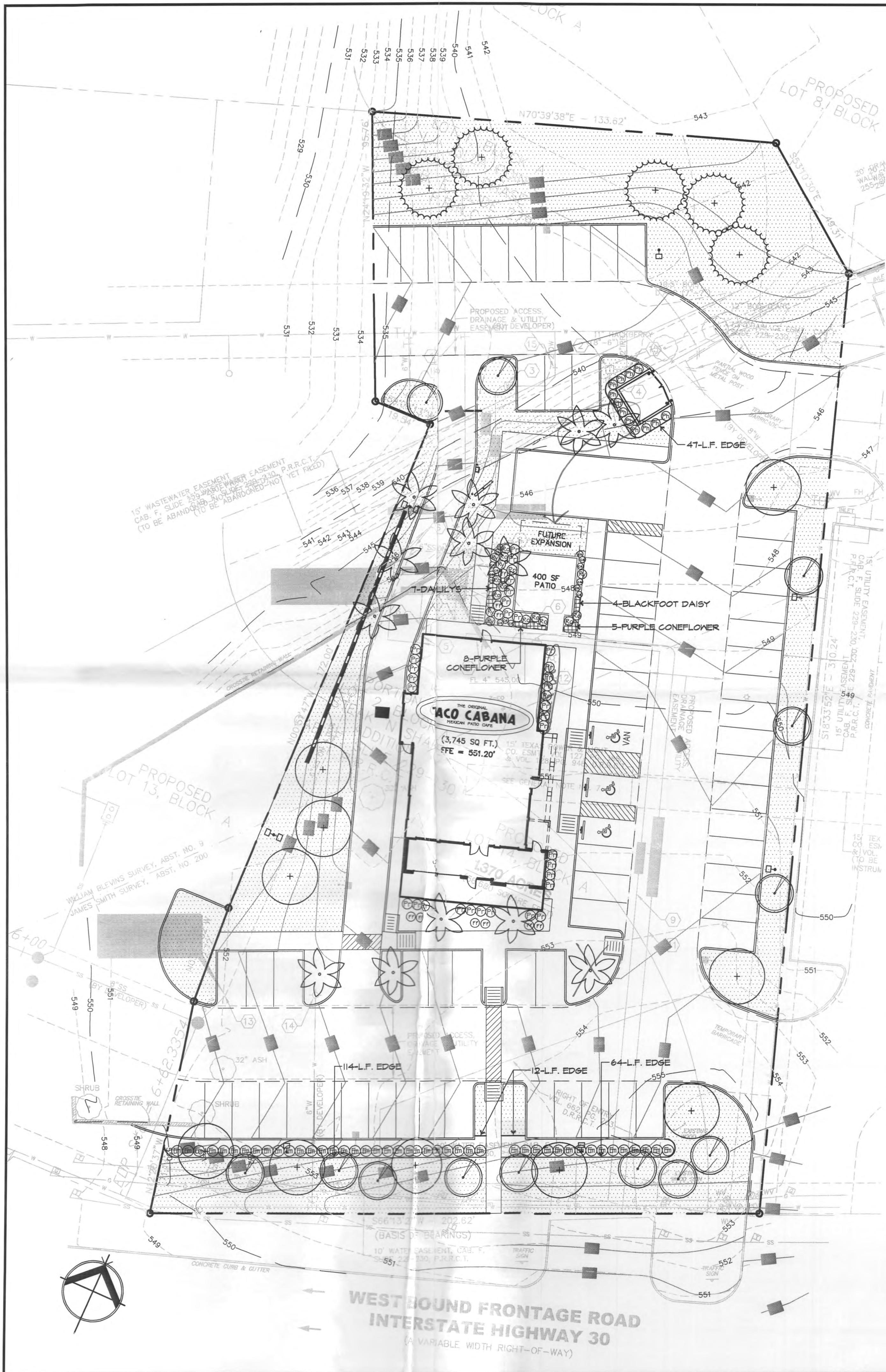
~~RECEIVED~~
 By _____

2007 007 FILE COPY

RECEIVED
 MAY 2 2007
 By _____







LARGE TREES

QUANTITY	SYMBOL	COMMON NAME	SCIENTIFIC NAME	SIZE & CONDITION
5	(Symbol: Circle with cross)	Bald Cypress	<i>Taxodium distichum</i>	3" caliper, 7' Ht.
10	(Symbol: Circle with dot)	October Glory Maple	<i>Acer rubrum 'October Glory'</i>	4" caliper, 8' Ht.

ORNAMENTAL TREES

QUANTITY	SYMBOL	COMMON NAME	SCIENTIFIC NAME	SIZE AND CONDITION
13	(Symbol: Circle with vertical line)	Forest Pansy Red Bud	<i>Cercis canadensis 'Forest Pansy'</i>	6' Ht./4' spread, 1 1/2" caliper, B&B or container.
13	(Symbol: Flower)	Florida Sabal	<i>Sabal palmetto</i>	45 gallon, 10' Ht., container

SHRUBS

QUANTITY	SYMBOL	COMMON NAME	SCIENTIFIC NAME	SIZE AND CONDITION
44	(Symbol: Circle with horizontal line)	Elaeagnus	<i>Elaeagnus pungens</i>	3 gallon, 16x20", 3' O.C. spacing
34	(Symbol: Circle with vertical line)	Variegated Privet	<i>L. sinense 'Variegata'</i>	3 gallon, 16x20", 3' O.C. spacing
12	(Symbol: Circle with horizontal line)	Red Tip Photinia	<i>Photinia x 'Fraseri'</i>	3 gallon, 16x20", 3' O.C. spacing
4	(Symbol: Circle with horizontal line)	Chinese Fringe Flower	<i>Loropetalum chinense</i>	3 gallon, 14x18", 3' O.C. spacing
15	(Symbol: Circle with horizontal line)	Cherry Sage	<i>Salvia greggii</i>	5 gallon, 18" Ht./18" spread
10	(Symbol: Circle with horizontal line)	Rosemary, Upright	<i>Rosmarinus officinalis</i>	5 gallon, 12" Ht./12" spread
5	(Symbol: Circle with horizontal line)	Red Yucca	<i>Hesperaloe parviflora</i>	5 gallon 12" Ht./12" spread

GROUNDCOVERS / PERENNIALS

QUANTITY	SYMBOL	CALLOUT	COMMON NAME	SCIENTIFIC NAME	SIZE AND CONDITION
4	(Symbol: Grid)		BLACKFOOT DAISY	<i>Melampodium leucanthum</i>	1 gallon at 18" o.c.
7	(Symbol: Grid)		DAYLILLY #1	<i>Hemerocallis Hybrid Stella d'Oro!</i>	1 gallon at 18" o.c.
13	(Symbol: Grid)		PURPLE CONEFLOWER	<i>Echinacea purpurea</i>	1 gallon at 18" o.c.

TURF GRASS

QUANTITY	CALLOUT	COMMON NAME	SCIENTIFIC NAME	SIZE AND CONDITION
18,500	S.F. 50D	Common Bermuda Grass	<i>Cynodon dactylon</i>	Solid sod

MISCELLANEOUS

QUANTITY	CALLOUT	DESCRIPTION
237	L.F. EDGE	L.F. Steel edge 1/8" x 4" with 12" stakes, green in color
1,000		SF 2" bed preparation as per specifications
1,000		SF 3" hardwood mulch as per specifications

NOTES

- Quantities shown are for contractor's convenience only. Contractor is responsible for verification of all quantities.
- Contractor to provide separate line item for a one(1) year maintenance package - see maintenance specifications.

REVISION NO. BY DATE

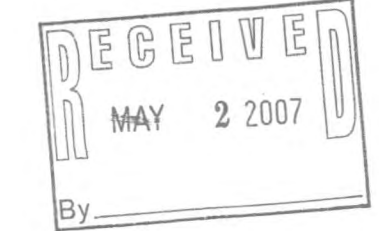
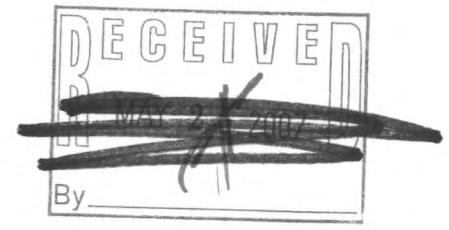
Bury Partners
ENGINEERING SOLUTIONS
5310 Harwood Hill Road, Suite 100
Dallas, Texas 75230
Tel. (972) 991-0011 Fax. (972) 991-0078
BuryPartners-INT, Inc. © Copyright 2007

LANDSCAPE ARCHITECT & SURVEYOR
STATE OF TEXAS
05/02/07



2007 007

FILE COPY



LAND DESIGN PARTNERS
LANDSCAPE ARCHITECTS PLANNERS
225 West 9th Street, Suite 300
Austin, Texas 78701
Phone 512.328.5900
Fax 512.328.1253

Scale: 1"=20'
Date: 05-02-07
Designed By: LDP
Drawn By: LDP
Checked By: LDP
File: /003/04/softscape/01L
Project No.: 40003-94

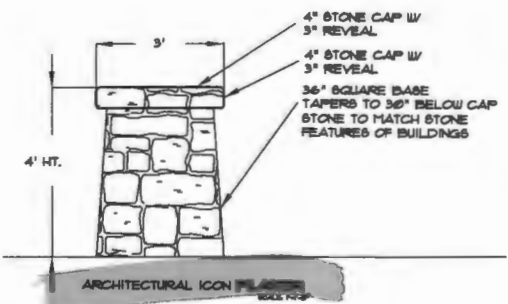
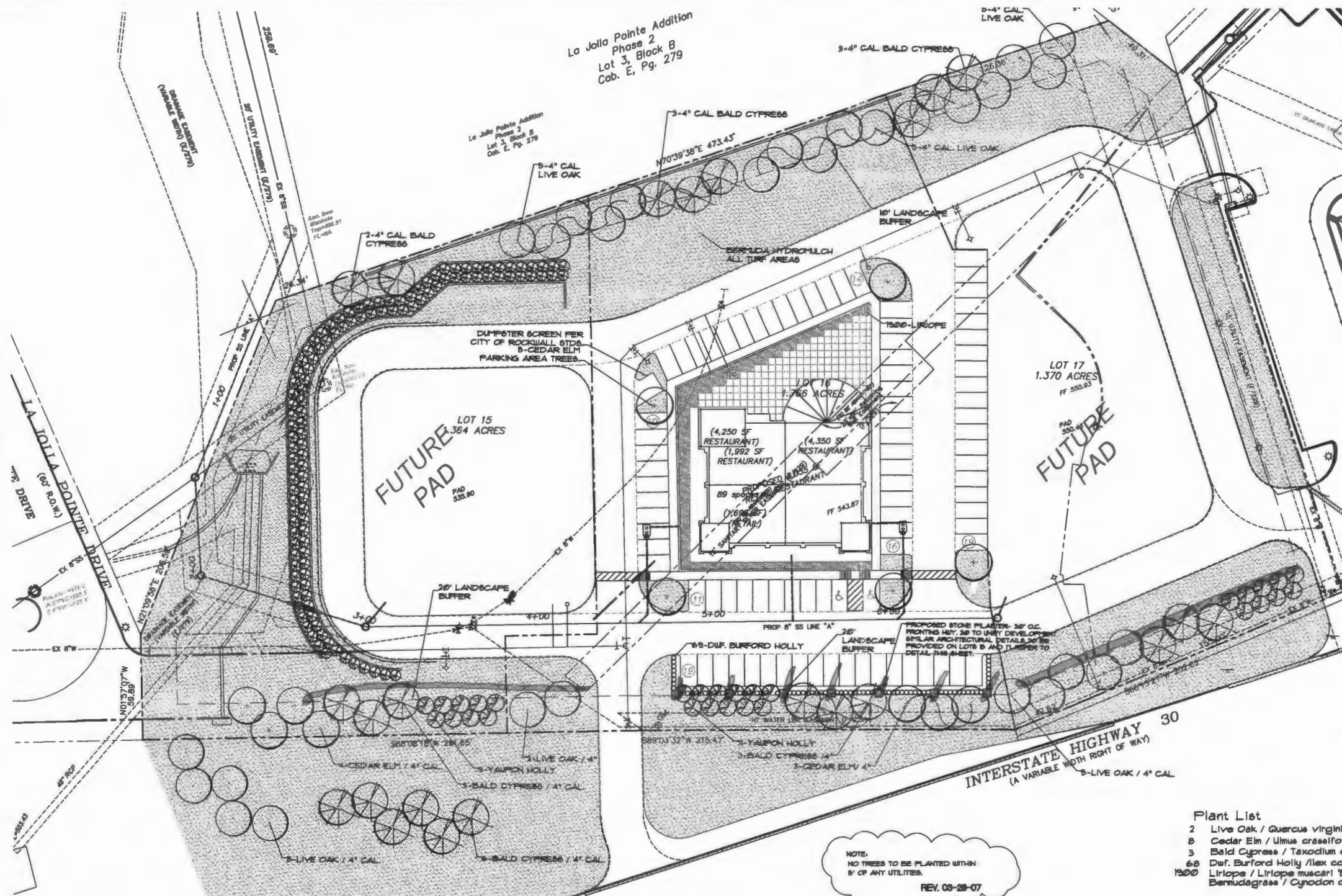
Mike Wallace - 917-707-8888

No. 4/13/07	REV. RETAINING WALL	App.
No. 3/28/07	PER CITY COMMENTS	
No. 2/21/07	PER CITY COMMENTS	
No. 1/2/07	PER CITY COMMENTS	



Allen & Ridinger Consulting, Inc.
100 E. Mark Street
Lawrence, Texas 75857
Tel. No. (972) 385-8800
Fax No. (972) 385-8011

Pad Site Landscape Plan
Wilkinson Commons
ROCKWALL, TEXAS



Plant List

- 2 Live Oak / Quercus virginiana
- 3 Cedar Elm / Ulmus crassifolia
- 8 Bald Cypress / Taxodium distichum
- 60 Duf. Burford Holly / Ilex com. burfordii nana
- 1300 Liriope / Liriope muscari 'Big Blue'
- Bermudagrass / Cynodon dactylon

4\"/>

GENERAL LANDSCAPE NOTES

1. All landscape areas are to be received within 7' of proposed finish grade and free from all trash and debris.
2. All trees are to be planted in pits to the diameter of the tree ball and no deeper than the depth of the ball. Barring all tree pits sides prior to planting. All trees are to be planted in pits and at or slightly above finish grade. All tree pits are to have a 3\"/>

GENERAL LANDSCAPE NOTES (cont'd)

5. All irrigation controllers are to have stick-click freeze and rain shutoff installed as per manufacturer's recommendations.
10. All irrigation sleeves to be by licensed irrigation contractor. All sleeves to be PVC schedule 40 with 90 degree elbows on both ends with extensions protruding 18\"/>

LANDSCAPE TABULATIONS- LOT B

LANDSCAPE BUFFER STRIP IN 30' OVERLAY.
REQUIRED: 20' BUFFER STRIP PROVIDED: 20' BUFFER STRIP
CANOPY TREES 3 PER 100 LF FRONTAGE
LOT B - 2875 LF FRONTAGE-1 CANOPY REQUIRED
LOT B - 2875 LF FRONTAGE-3 ACCENT TREES REQUIRED
1 CANOPY AND 6 ACCENT TREES PROVIDED
NORTH PROPERTY LANDSCAPE BUFFER:
10' REQUIRED AND 10' PROVIDED
PARKING AREA LANDSCAPE:
TOTAL PARKING AND DRIVE AISLES AREA CALCULATIONS AND PARKING TABULATIONS TO BE PROVIDED AT BUILDOUT.
SITE LANDSCAPE REQUIRED:
TOTAL SITE AREA = 10,375 SF
84 SITE LANDSCAPE REQUIRED = 8,320 SF
84 SITE LANDSCAPE PROVIDED UPON BUILDOUT
MITIGATION TREES REQUIRED (REF. SHEET LP-1)
LOT B MITIGATION 20\"/>

LANDSCAPE TABULATIONS- LOT 16

LANDSCAPE BUFFER STRIP IN 30' OVERLAY.
REQUIRED: 20' BUFFER STRIP PROVIDED: 20' BUFFER STRIP
CANOPY TREES 3 PER 100 LF FRONTAGE
LOT 16 - 2832 LF FRONTAGE-8 CANOPY REQUIRED
LOT 16 - 2832 LF FRONTAGE-11 ACCENT TREES REQUIRED
8 CANOPY AND 11 ACCENT TREES PROVIDED
NORTH PROPERTY LANDSCAPE BUFFER:
10' REQUIRED AND 10' PROVIDED
PARKING AREA LANDSCAPE:
TOTAL PARKING AND DRIVE AISLES AREA CALCULATIONS AND PARKING TABULATIONS TO BE PROVIDED AT BUILDOUT.
SITE LANDSCAPE REQUIRED:
TOTAL SITE AREA = 78,540 SF
84 SITE LANDSCAPE REQUIRED = 10,440 SF
84 SITE LANDSCAPE PROVIDED = 10,440 SF
MITIGATION TREES REQUIRED (REF. SHEET LP-1)
LOT 16 MITIGATION 32\"/>

LANDSCAPE TABULATIONS- LOT 17

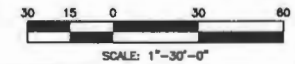
LANDSCAPE BUFFER STRIP IN 30' OVERLAY.
REQUIRED: 20' BUFFER STRIP PROVIDED: 20' BUFFER STRIP
CANOPY TREES 3 PER 100 LF FRONTAGE
LOT 17 - 2823 LF FRONTAGE-1 CANOPY REQUIRED
LOT 17 - 2823 LF FRONTAGE-3 ACCENT TREES REQUIRED
REQUIRED PLANTINGS TO BE PROVIDED UPON BUILDOUT
NORTH PROPERTY LANDSCAPE BUFFER:
10' REQUIRED AND 10' PROVIDED
PARKING AREA LANDSCAPE:
TOTAL PARKING AND DRIVE AISLES AREA CALCULATIONS AND PARKING TABULATIONS TO BE PROVIDED AT BUILDOUT.
SITE LANDSCAPE REQUIRED:
TOTAL SITE AREA = 94,660 SF
84 SITE LANDSCAPE REQUIRED = 8,320 SF
84 SITE LANDSCAPE PROVIDED UPON BUILDOUT
MITIGATION TREES REQUIRED (REF. SHEET LP-1)
LOT 17 MITIGATION 32\"/>

NOTE:
NO TREES TO BE PLANTED WITHIN
5' OF ANY UTILITIES.
REV. 03-28-07

AN ADDITIONAL 14\"/>

AN ADDITIONAL 14\"/>

AN ADDITIONAL 14\"/>



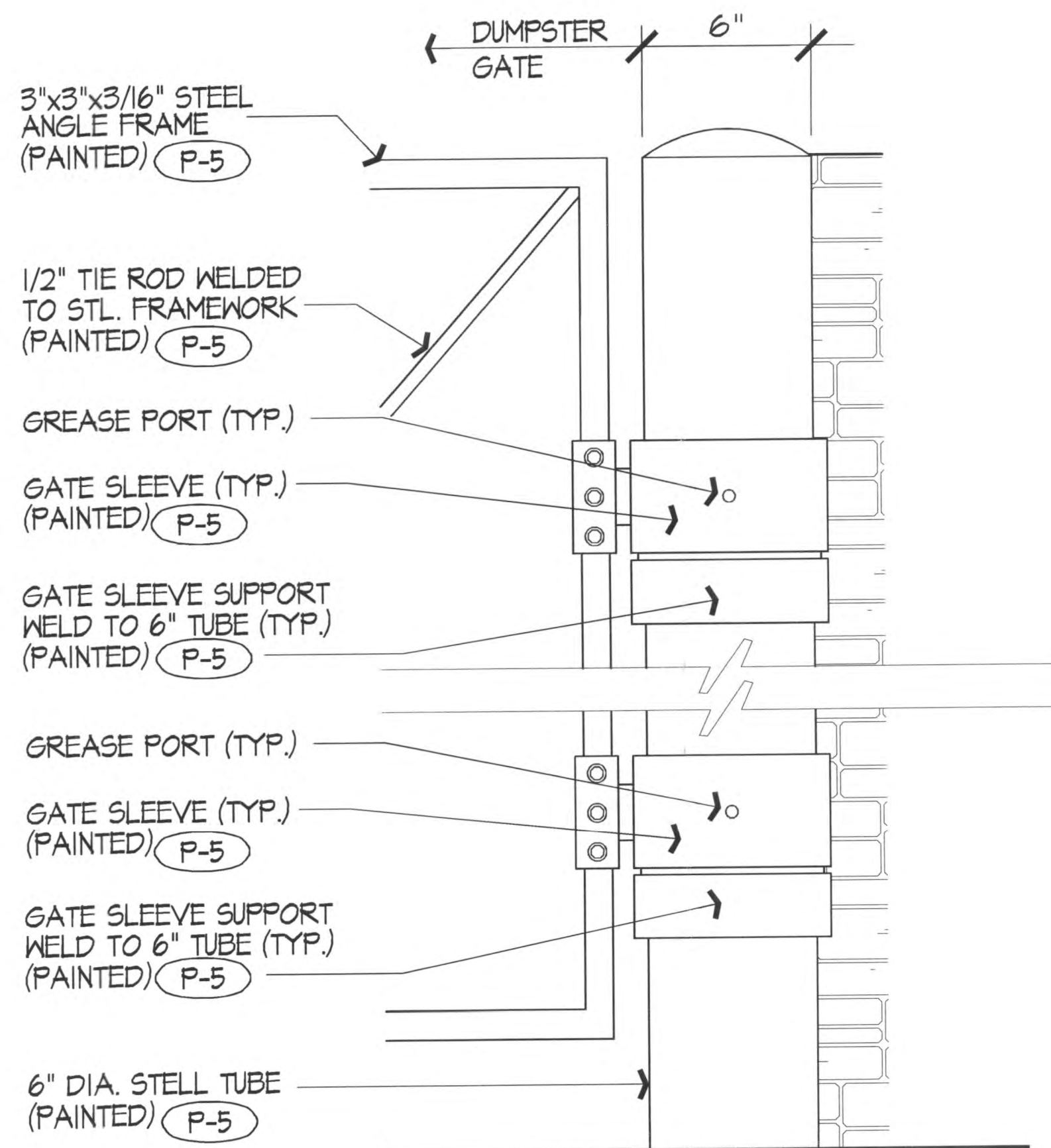
LandPatterns, Inc.
Landscape Architecture
Landscape Construction
8894 Oak Lawn Avenue, Suite 200
Dallas, Texas 75243
T 214-259-7000
F 214-259-7008

DATE ISSUED 04-08-07

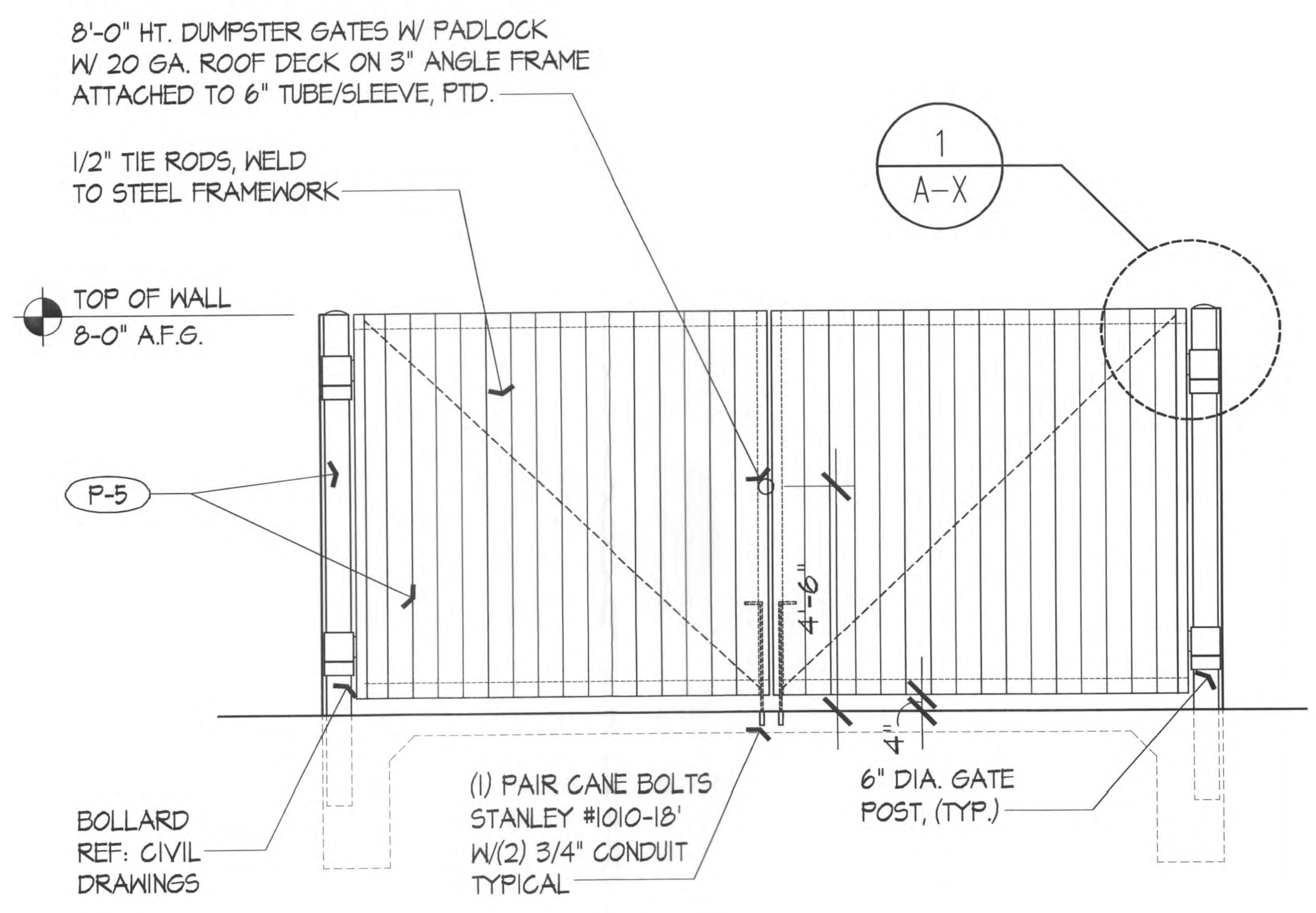
Scale: 1"=30'-0"

Designed by: JBS
Drawn by: KOL
Checked by: JBS
Date: AUGUST 2006
Project No. 070-001

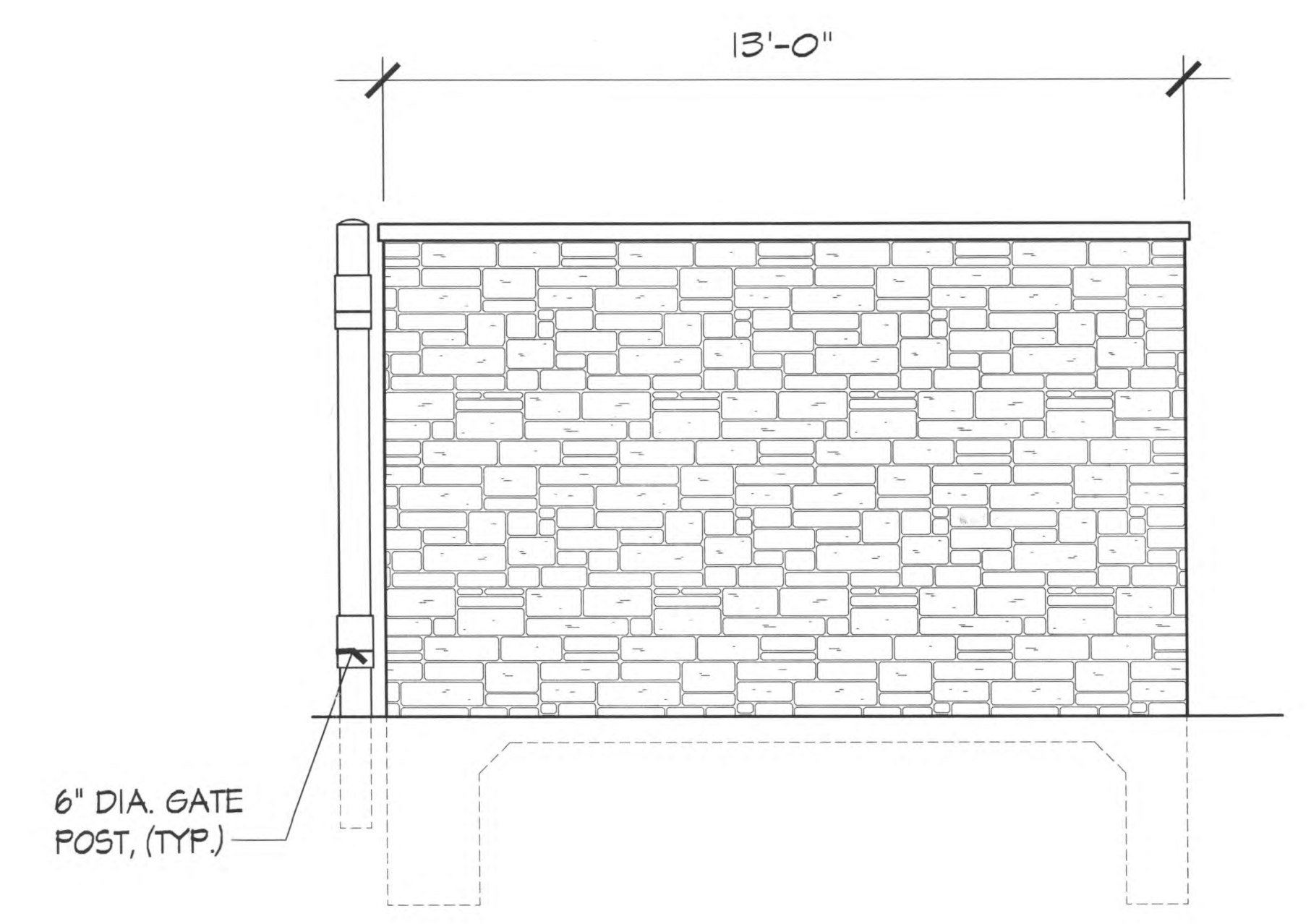
SHEET
LP-2
OF 2



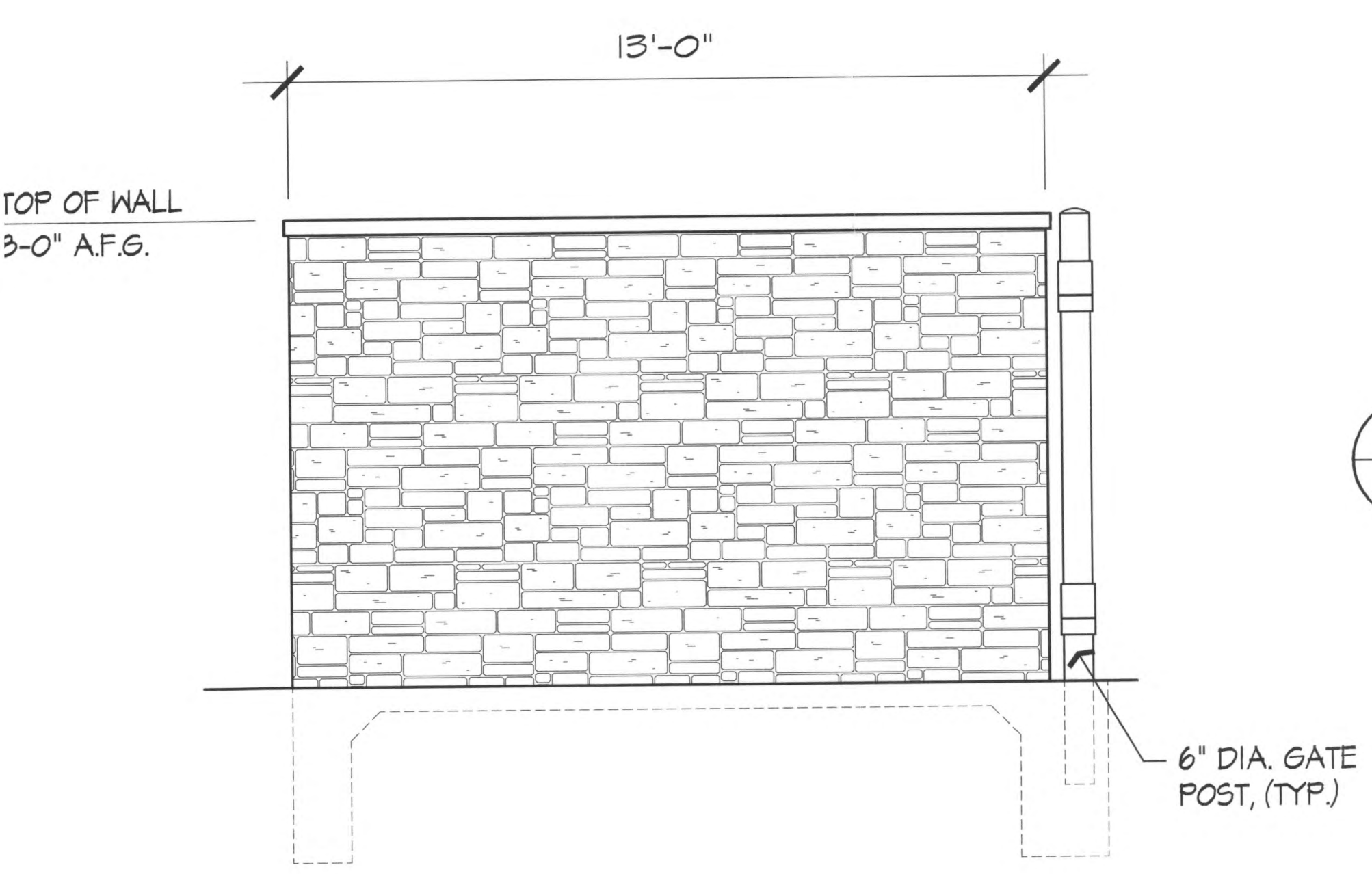
1 GATE HINGE DETAIL
SCALE: N.T.S.



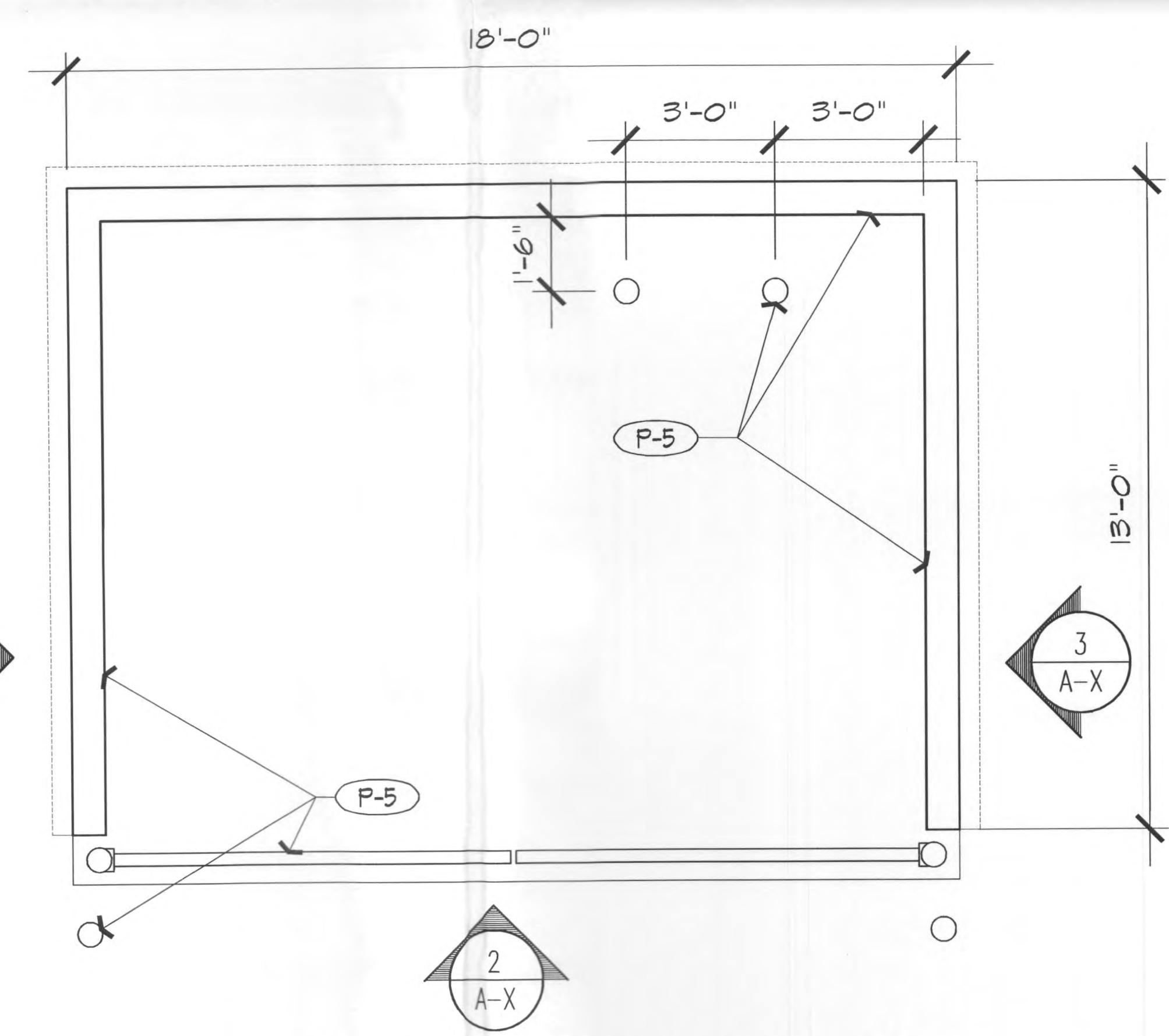
2 GATE ELEVATION
SCALE: N.T.S.



3 DUMPSTER ELEVATION
SCALE: N.T.S.



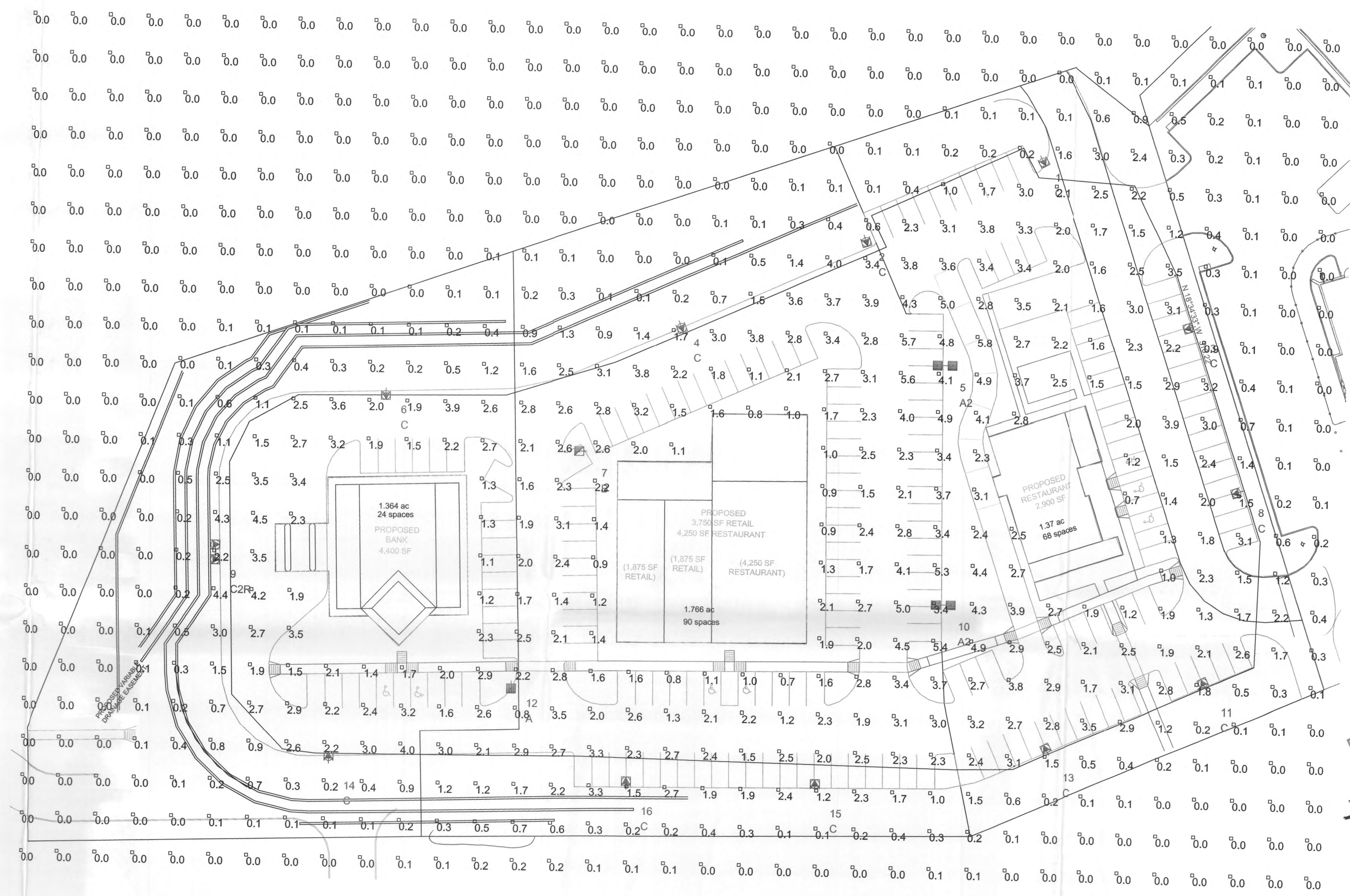
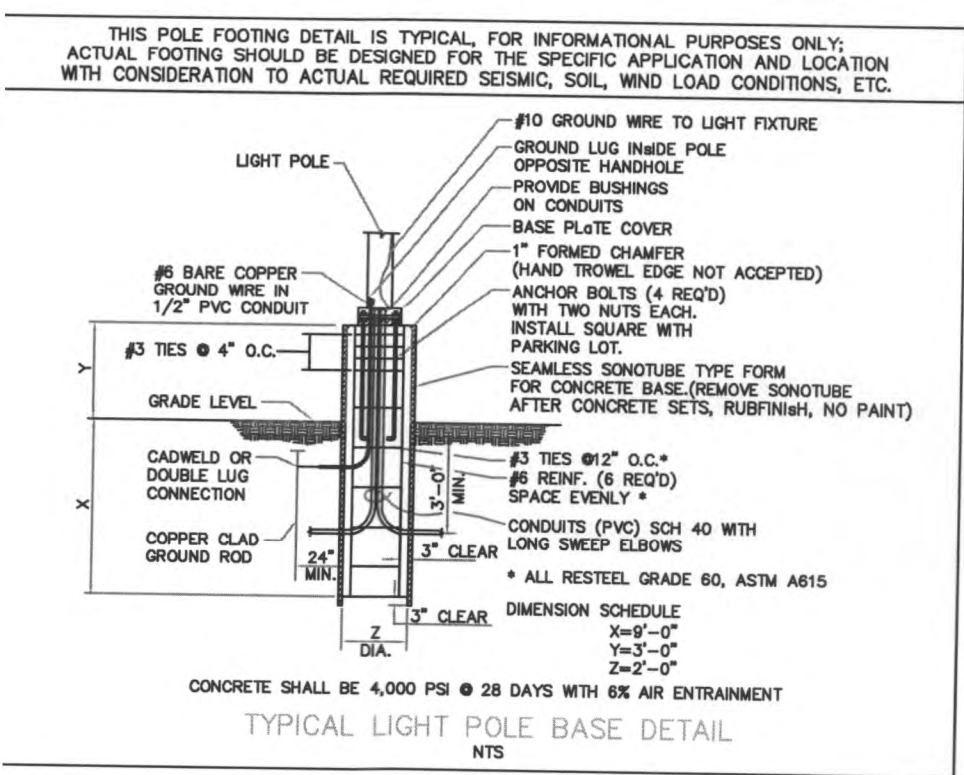
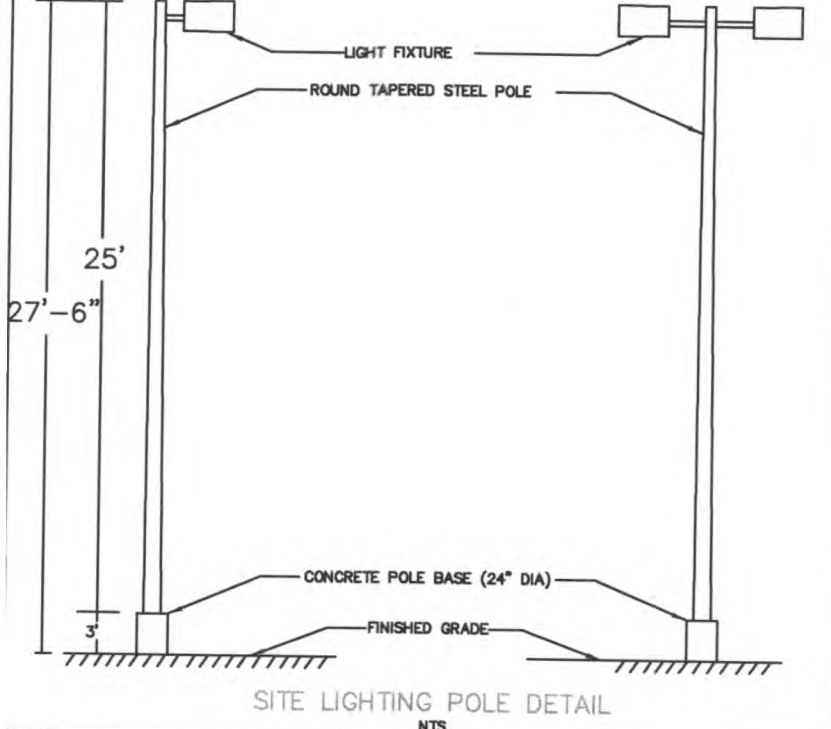
4 DUMPSTER ELEVATION
SCALE: N.T.S.



5 DUMPSTER PLAN
SCALE: N.T.S.



ROCKWALL, TEXAS



Luminaire Location Summary		
SeqNo	Label	Z
1	C	27.5
2	C	27.5
3	C	27.5
4	C	27.5
5	A2	27.5
6	C	27.5
7	B	27.5
8	C	27.5
9	C2R	27.5
10	A2	27.5
11	C	27.5
12	A	27.5
13	C	27.5
14	C	27.5
15	C	27.5
16	C	27.5

Statistical Area Summary					
Label	Avg	Max	Min	Avg/Min	Max/Min
Main Lot	2.55	5.8	0.7	3.64	8.29

Luminaire Schedule						
Symbol	Qty	Label	Arrangement	Lumens	LLF	Description
[Symbol]	1	A	SINGLE	36000	0.750	Visionaire #AME-2-T5-400-M-VLFG - Pole RTSP25 - IES.A25400MF
[Symbol]	2	A2	BACK-BACK	36000	0.750	Visionaire #AME-2-T5-400-M-VLFG - Pole RTSP25 - IES.A25400MF
[Symbol]	1	B	SINGLE	36000	0.750	Visionaire #AME-2-T3-400-M-VLFG - Pole RTSP25 - IES.A23400MF
[Symbol]	11	C	SINGLE	36000	0.750	Visionaire #AME-2-T3-400-M-VLFG-LS - Pole RTSP25 - IES.A23400MF
[Symbol]	1	C2R	ROTATED OPTICS	36000	0.750	Visionaire #AME-2-T3-400-M-VLFG-LS - Pole RTSP25 - IES.A23400MF

For Additional Information and Pricing Contact:
On Site Lighting & Survey, LLC
 Jim Knuckey #763-684-1548 ph.

Security Level specification and background drawing are provided by Client and their Civil Engineer. Luminaire locations shown are recommended based on conditions currently existing on site. Foot-candle levels shown are calculated using photometric (.ies) files provided by Luminaire Manufacturer(s) and commercially available, industry-standard lighting software. Procedures used are in accordance with Illuminating Engineering Society approved methods. Actual footcandles measured on site may vary depending on uncontrollable variables not shown on this plan (i.e.: landscape components, off-site contributing light, etc.). Actual performance of fixtures may vary from the theoretical due to variations in electrical voltage, manufacturer's lamp performance and other variable field conditions.

ON SITE
LIGHTING & SURVEY, LLC

1111 HWY 25 NORTH, SUITE # 201
BUFFALO, MN, 55313
PH 763-684-1548 FAX 763-682-9048

Revision: Date:
0 01/18/2007

PHOTOMETRIC
PLAN - ENTIRE SITE

ROCKWALL, TEXAS

Project #:
7070118

Contract #:

Date:
01/18/2007

Scale:
1" = 30'-0"

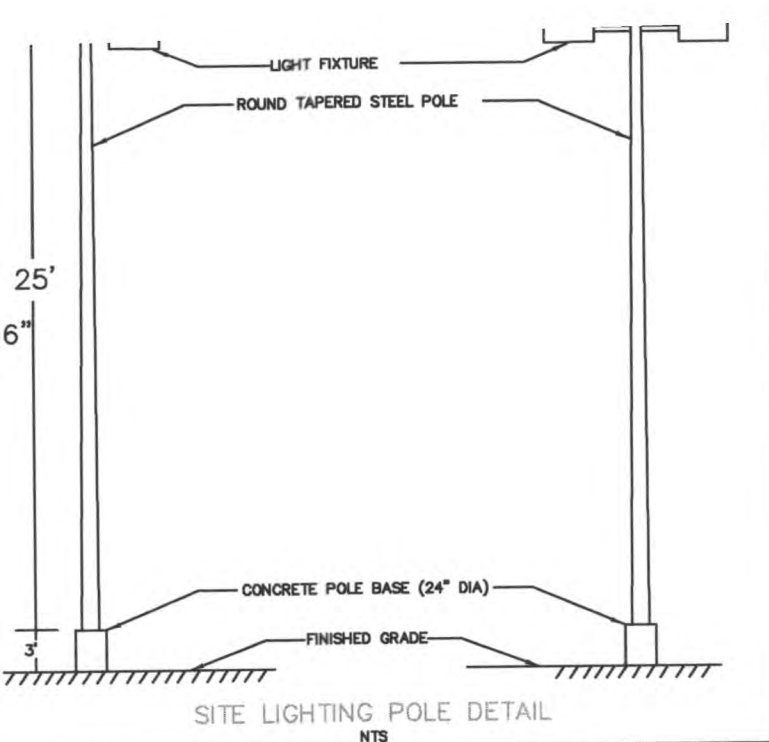
Drawn/Checked:
SAZ/JK

Sheet #:
Pg 1 of 1 Rev. #

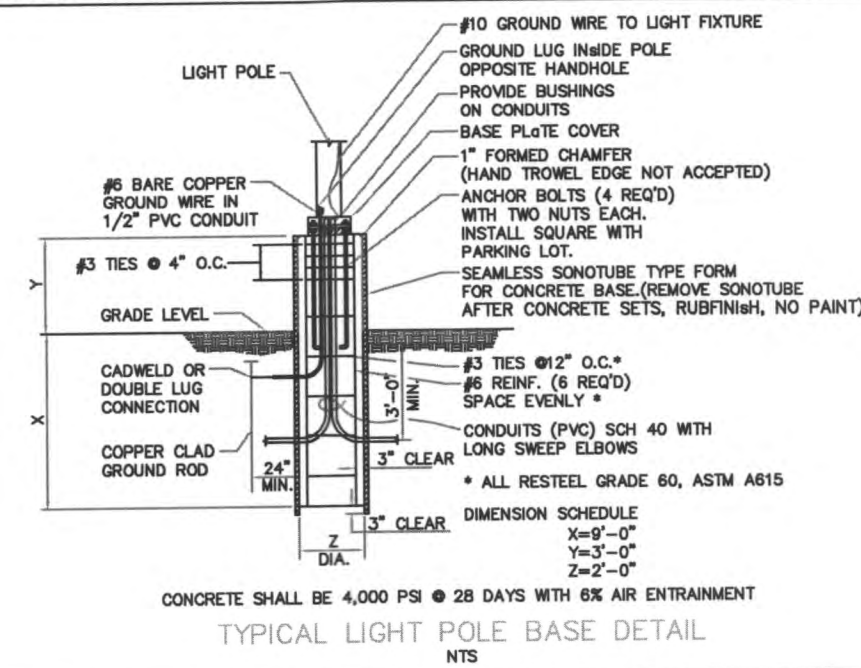
2007 007
FILE COPY

RECEIVED
MAY 2 2007

RECEIVED
MAY 2 2007

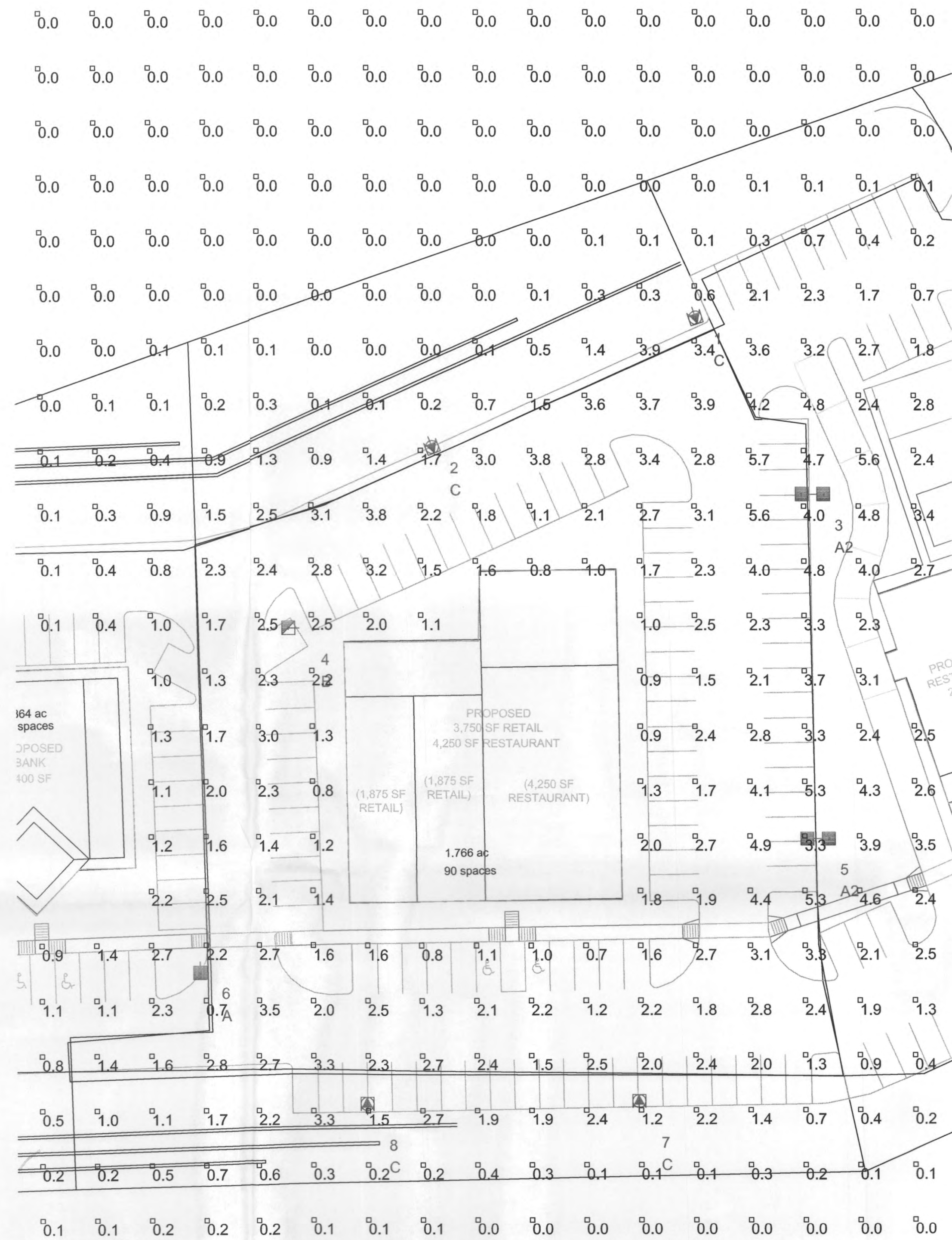


THIS POLE FOOTING DETAIL IS TYPICAL, FOR INFORMATIONAL PURPOSES ONLY. ACTUAL FOOTING SHOULD BE DESIGNED FOR THE SPECIFIC APPLICATION AND LOCATION WITH CONSIDERATION TO ACTUAL REQUIRED SEISMIC, SOIL, WIND LOAD CONDITIONS, ETC.



Luminaire Location Summary

SeqNo	Label	Z
1	C	27.5
2	C	27.5
3	A2	27.5
4	B	27.5
5	A2	27.5
6	A	27.5
7	C	27.5
8	C	27.5



Label	Avg	Max	Min	Avg/Min	Max/Min
Center Lot	2.44	5.7	0.7	3.49	8.14

Label	Qty	Label	Arrangement	Lumens	LLF	Description
A	1	A	SINGLE	36000	0.750	Visionaire #AME-2-T5-400-M-VLFG - Pole RTSP25 - IES.A25400MF
A2	2	A2	BACK-BACK	36000	0.750	Visionaire #AME-2-T5-400-M-VLFG - Pole RTSP25 - IES.A25400MF
B	1	B	SINGLE	36000	0.750	Visionaire #AME-2-T3-400-M-VLFG - Pole RTSP25 - IES.A23400MF
C	4	C	SINGLE	36000	0.750	Visionaire #AME-2-T3-400-M-VLFG-LS - Pole RTSP25 - IES.A23400MF

For Additional Information and Pricing
On Site Lighting & Survey
 Jim Knuckey #763-684-1111

Security Level specification and background drawing are provided by Client. Luminaire locations shown are recommended based on conditions current at the time of the survey. Footcandle levels shown are calculated using photometric (.ies) files provided by the luminaire manufacturer and commercially available, industry-standard lighting software. Procedures used were in accordance with Illuminating Engineering Society approved methods. Actual footcandle levels may vary depending on uncontrollable variables not shown on this plan (i.e.: off-site contributing light, etc.). Actual performance of fixtures may vary due to variations in electrical voltage, manufacturer's lamp performance and other factors.