

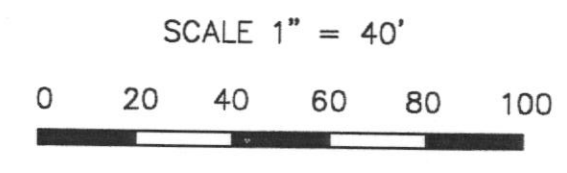
SITEPLAN
 Xref:
 Blg
 Culvert
 Curbs
 Easement
 Firelane
 Pond
 Propline
 PropROW
 SanSew
 Sidewalk
 Topo1
 WS-Pipes
 Legend
 Signs

N 47° 57' 52" E 1,110.57'

TOTAL SITE 19.9981 Ac.

LEGEND

- | | | | | | |
|---|------------------|--------|---------------------|--------|----------------|
| ○ | UTILITY POLE | 572.82 | CURB | E | ELECTRIC |
| ○ | FIRE HYDRANT | IRF | SPOT ELEVATION * | g | GAS-STEAM |
| ○ | STREET LIGHT | CIRS | IRON ROD FOUND | TEL | PHONE-TV |
| ○ | "METER" BOX | | CAPPED IRON ROD SET | 10" w | WATER |
| ○ | SANITARY MANHOLE | 580 | PROPERTY LINE | 8" SS | SANITARY SEWER |
| ○ | VALVE | 75 | EXIST. CONTOUR | 15" SD | STORM SEWER |
| ▲ | PHONE MARKER | | PROP. CONTOUR | | |
| | | | BM OR CONTROL POINT | | |



Lot 2, Block 1
 13.2000 Ac.

See separate Landscape Plan
 See separate Lighting Plan
 See Architectural Elevations

Proposed
 Education Building
 Two Stories
 Height = 29'
 39,500 GSF
 FF=585.00

Existing Building
 Height = 48'
 FF=584.04

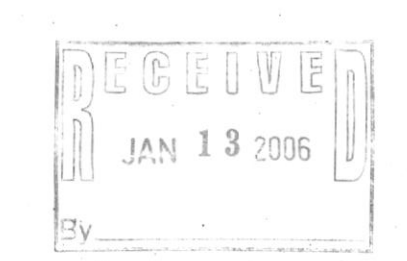
Lot 1, Block 1
 6.7981 Ac.

278 Regular Parking
 12 Handicap Parking

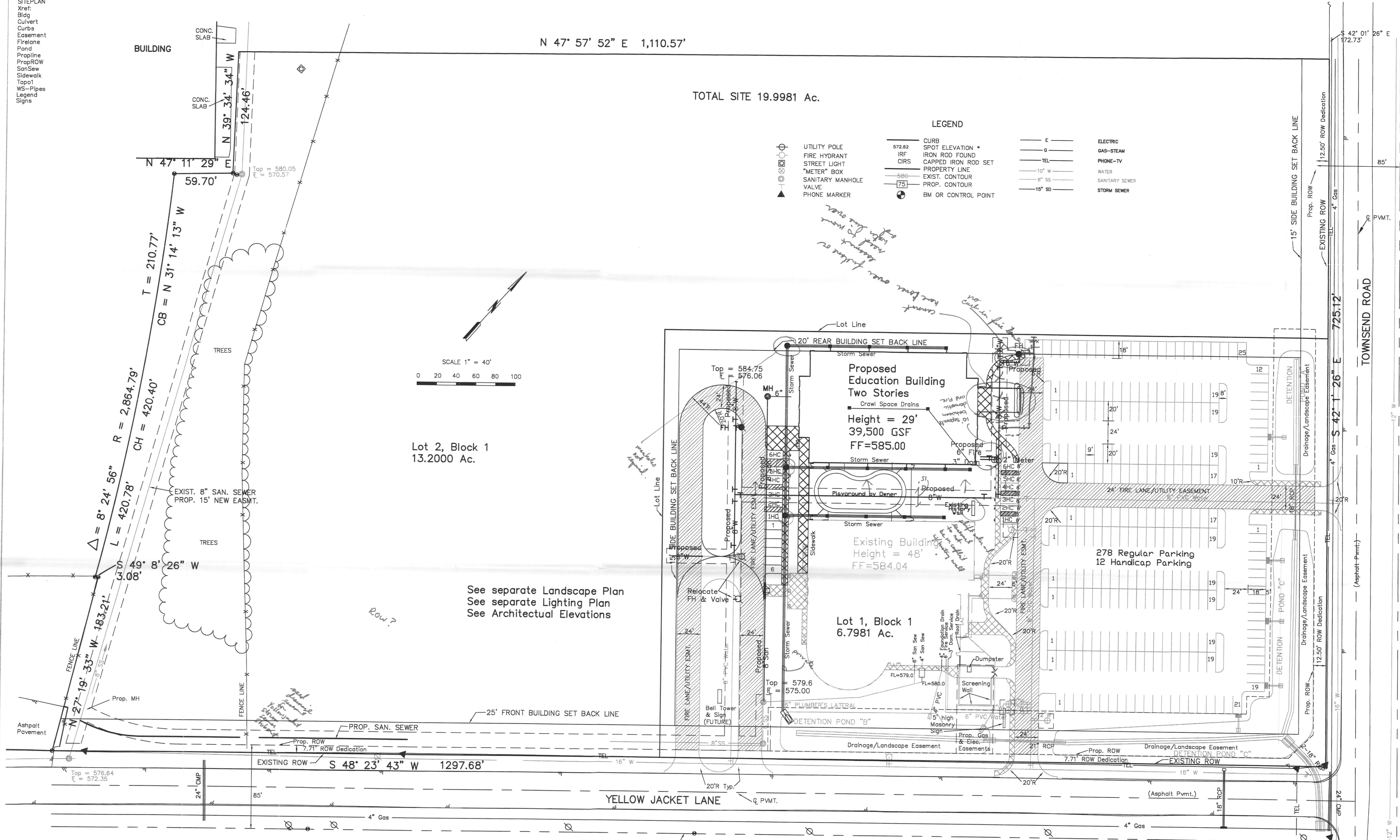
SITE PLAN
 PHASE 2
 FIRST UNITED METHODIST CHURCH
 of ROCKWALL

January 12, 2006

2006 001



FILE COPY



PHASE II

Elizabeth Cameron
Christian
Education Building

First United
Methodist
Church

Rockwall, TX

Construction
Documents

THE DESIGN DOCUMENTS DEPICTED HEREIN
ARE INCOMPLETE AND MAY NOT BE USED
FOR REGULATORY APPROVAL, PERMIT, OR
CONSTRUCTION
RONALD J. SHAW, 4310

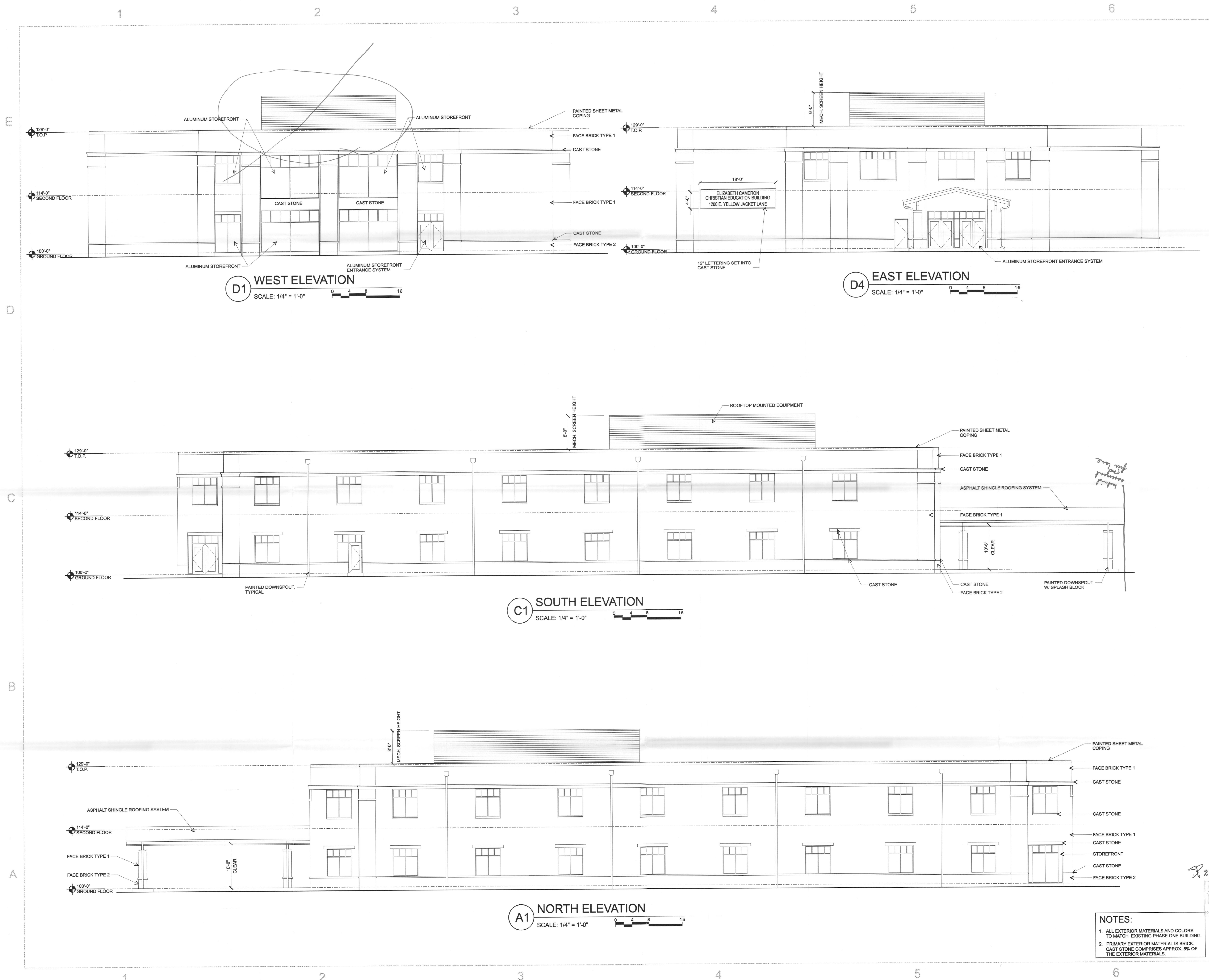
ARCHITECT COORDINATED DRAWINGS.
ENGINEERING DRAWINGS WERE
ENGINEERED AND DRAWN BY THOSE
DISCIPLINES

REVISIONS

Exterior
Elevations

A201
FILE COPY

JOB NO: 2004-02
DATE: 1/13/06
DRAWN BY: PWJ
FILE: 2004-02-elev.dgn
COPYRIGHT 2006



D1 WEST ELEVATION
SCALE: 1/4" = 1'-0"

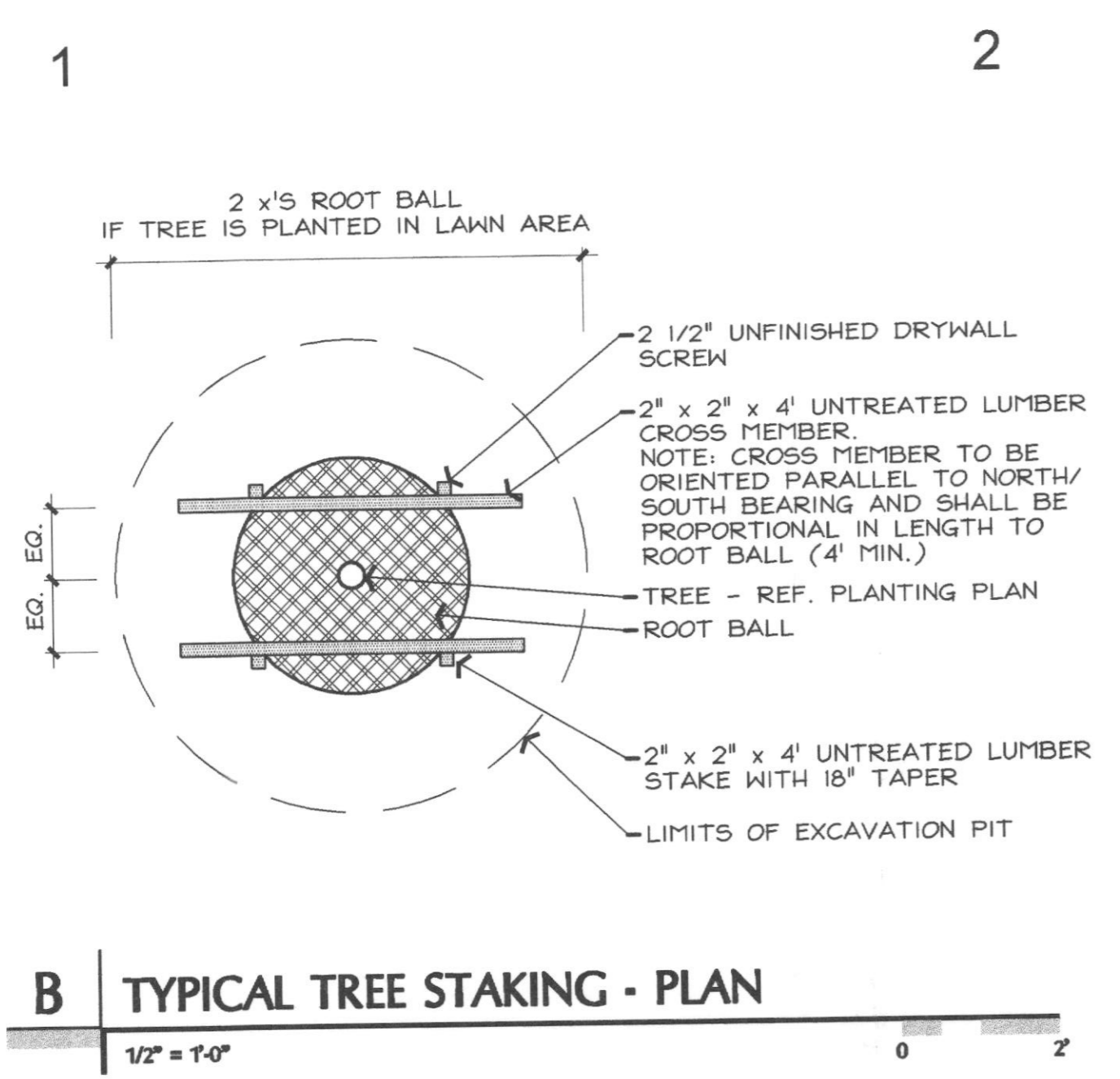
D4 EAST ELEVATION
SCALE: 1/4" = 1'-0"

C1 SOUTH ELEVATION
SCALE: 1/4" = 1'-0"

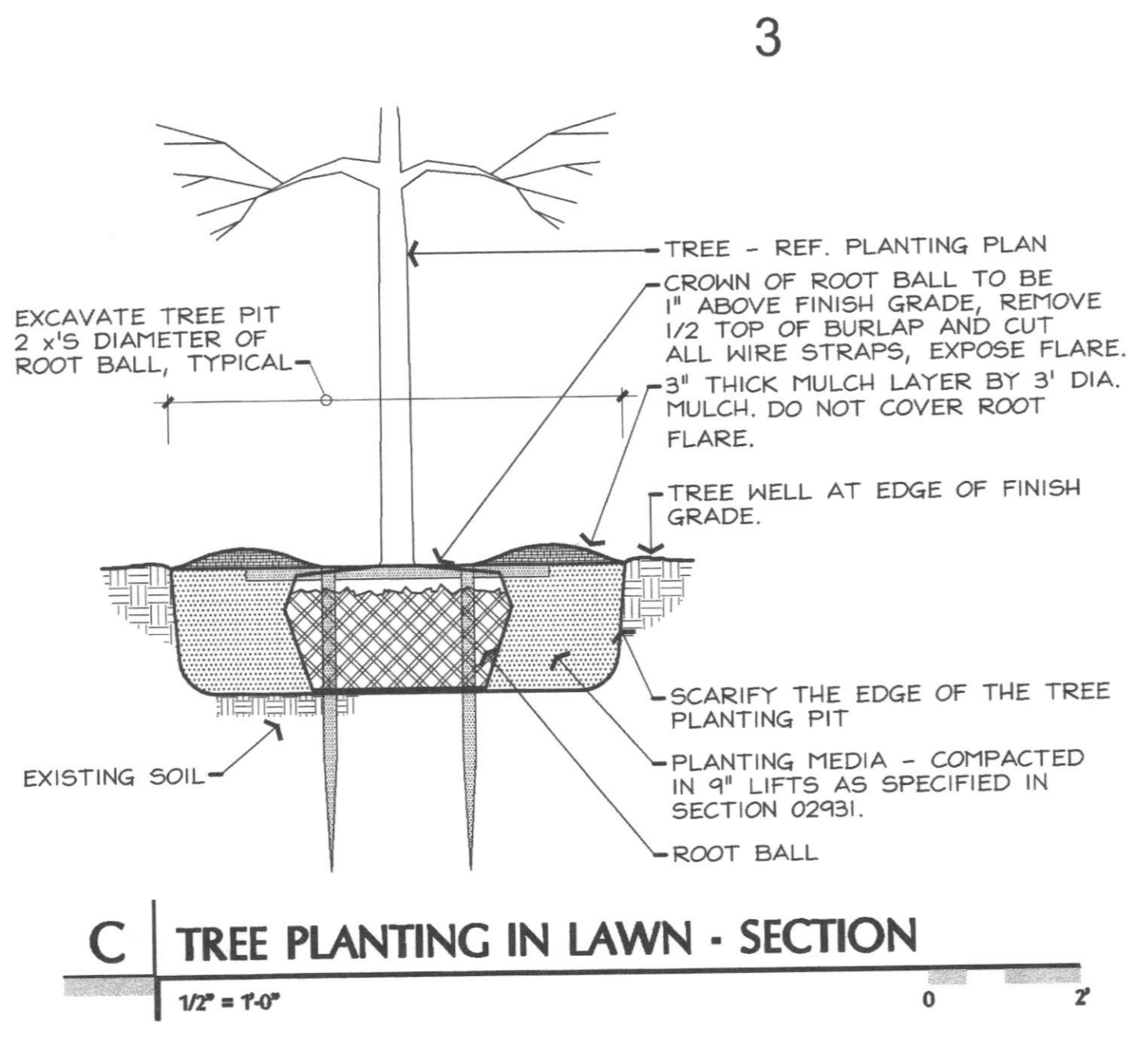
A1 NORTH ELEVATION
SCALE: 1/4" = 1'-0"

NOTES:
1. ALL EXTERIOR MATERIALS AND COLORS TO MATCH EXISTING PHASE ONE BUILDING.
2. PRIMARY EXTERIOR MATERIAL IS BRICK. CAST STONE COMPRISES APPROX. 5% OF THE EXTERIOR MATERIALS.

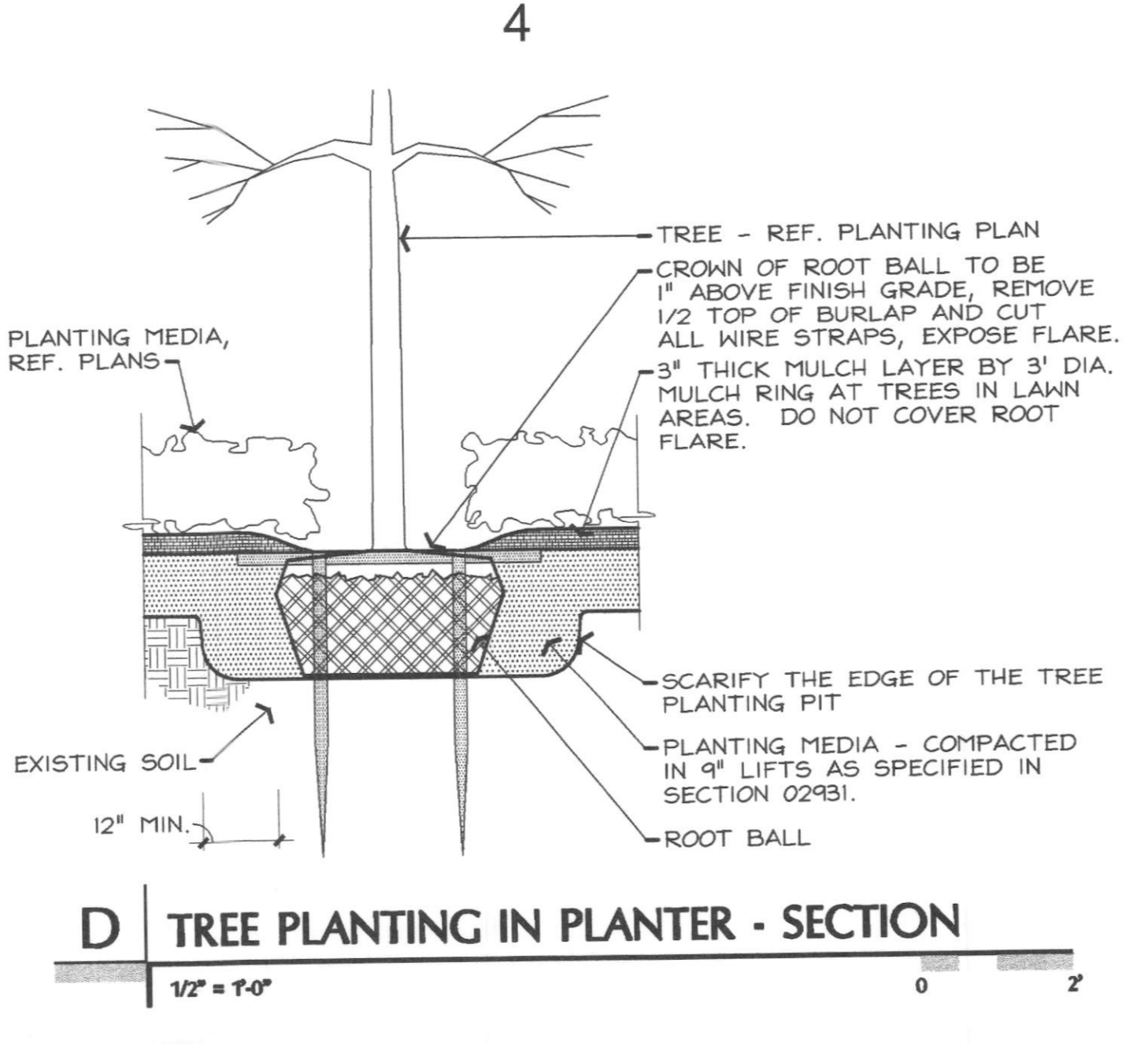
2006 001
JAN 13 2006



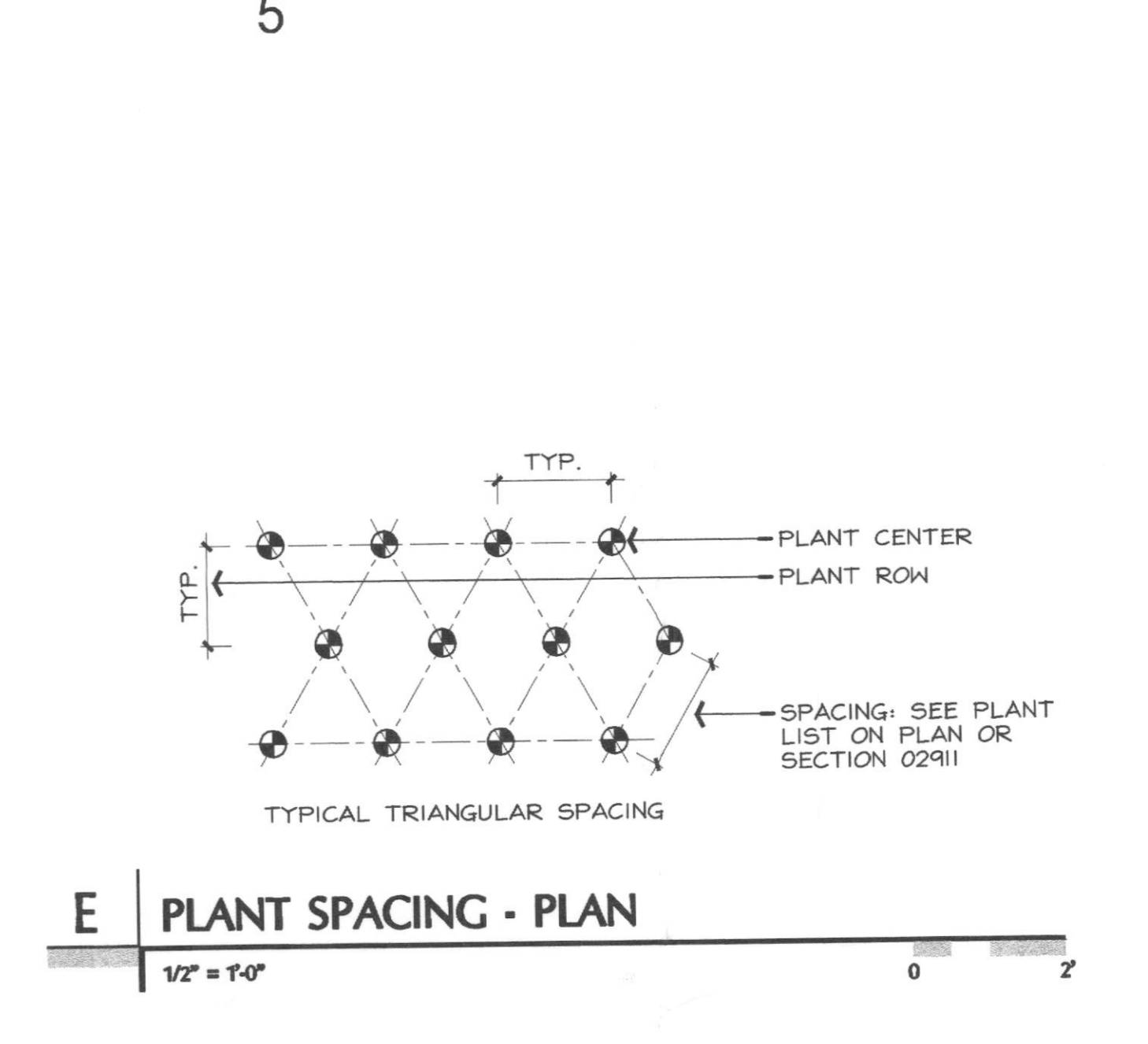
B TYPICAL TREE STAKING - PLAN
1/2" = 1'-0"



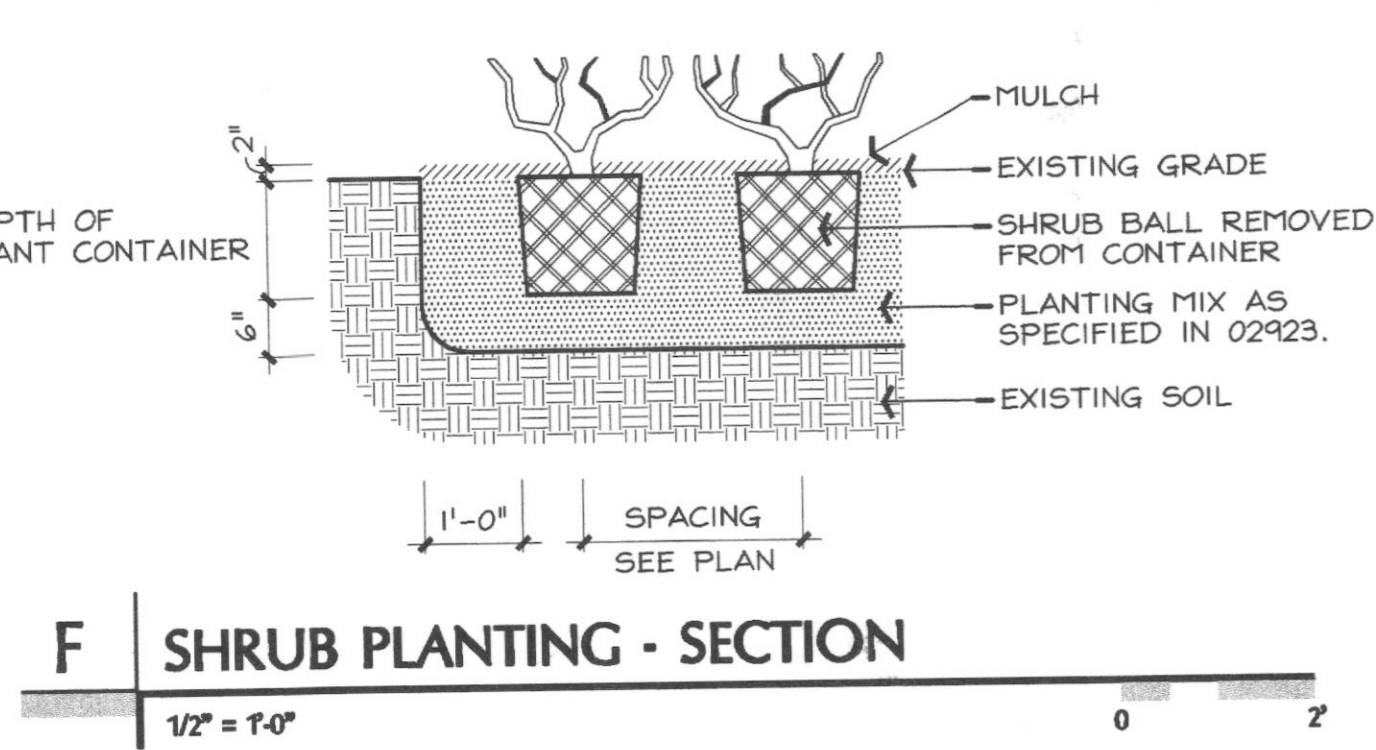
C TREE PLANTING IN LAWN - SECTION
1/2" = 1'-0"



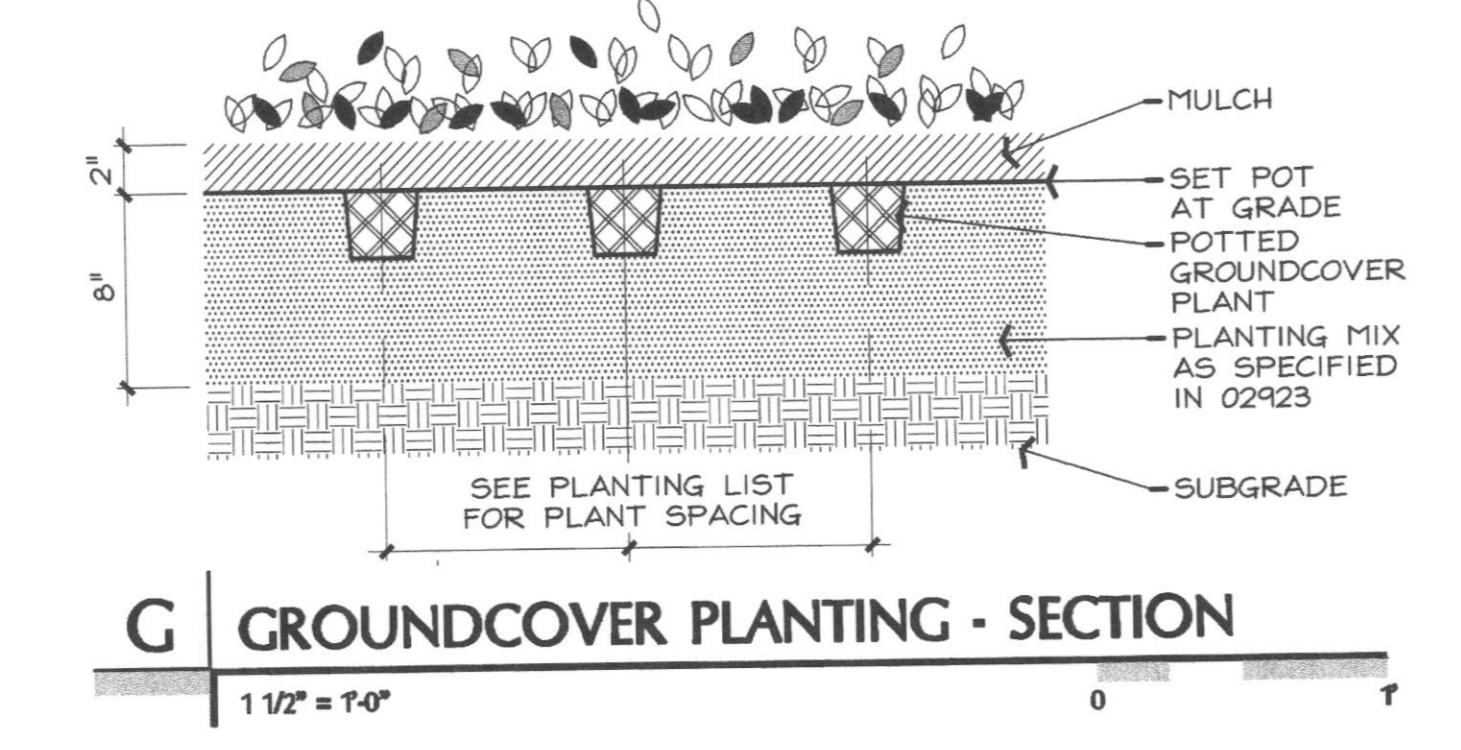
D TREE PLANTING IN PLANTER - SECTION
1/2" = 1'-0"



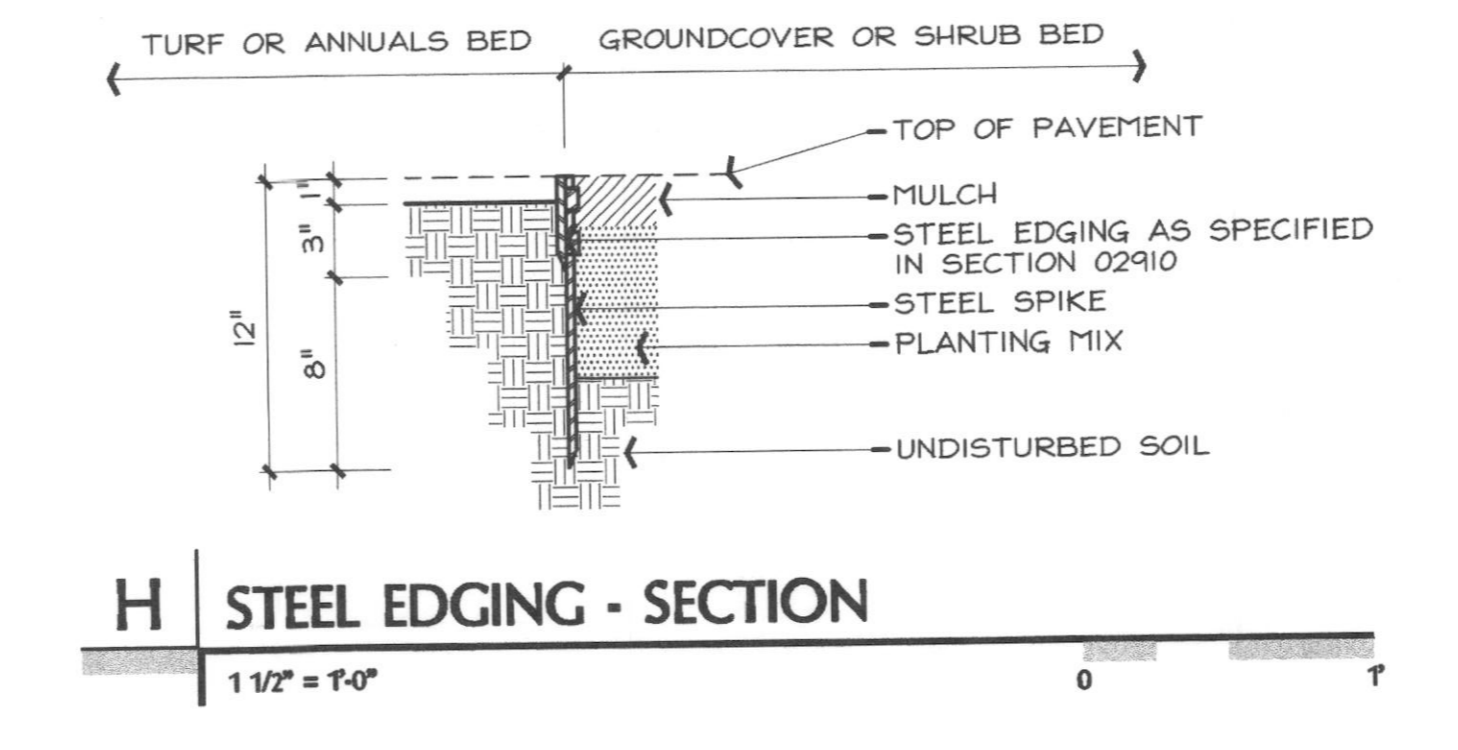
E PLANT SPACING - PLAN
1/2" = 1'-0"



F SHRUB PLANTING - SECTION
1/2" = 1'-0"



G GROUNDCOVER PLANTING - SECTION
1 1/2" = 1'-0"



H STEEL EDGING - SECTION
1 1/2" = 1'-0"

C Landscape Ordinance
Rockwall, Texas
Calculations based on internal lot

Mandatory Provisions

- 10' landscape buffer
Provided.
- Screening of off-street loading areas
Provided.
- Residential Adjacency
6' masonry fencing
n/a
- Buffer landscaping
1 tree per 50' linear feet
Existing trees satisfy the buffer requirements
- Parking lot landscaping
5% required
16,000 * .05 = 800 required square feet
8,000 provided square feet
- Open space
Office zoning requires 20%
92,500 * .20 = 18,500 square feet required
20,400 square feet provided

B Plant Legend

Botanic Name	Common Name	Size	Description
Quercus shumardii	Shumard Red Oak	3" caliper	Limbed to 7' clear trunk
Quercus virginiana	Southern Live Oak	3" caliper	Limbed to 7' clear trunk
Cercis canadensis	Texas Redbud	2" caliper	Balled and burlapped
Chilopsis linearis	Desert Willow	30 gallon	Container
Cornus florida	Dogwood	15 gallon	Container
Cupressocyparis leylandii	Leyland Cypress	30 gallon	Container
Lagerstroemia indica 'Natchez White'	Natchez White Crape Myrtle	6'-8' height	Balled and burlapped
Abelia gandiflora	Abelia	3 gallon	30" on center
Ilex cornuta 'Burfordii Nana'	Dwarf Burford Holly	3 gallon	24" on center
Loropetalum chinense	Loropetalum	3 gallon	24" on center
Liriope Muscari 'Big Blue'	Big Blue Liriope	4" pot	12" on center
Liriope Muscari 'Giant'	Giant Liriope	1 gallon	18" on center
Trachelospermum asiaticum	Asian Jasmine	4" pot	12" on center
Lantana x 'New Gold'	Lantana - 'New Gold'	1 gallon	24" on center
Pennisetum alopecuroides 'Hameln'	Hameln Fountain Grass	1 gallon	18" on center

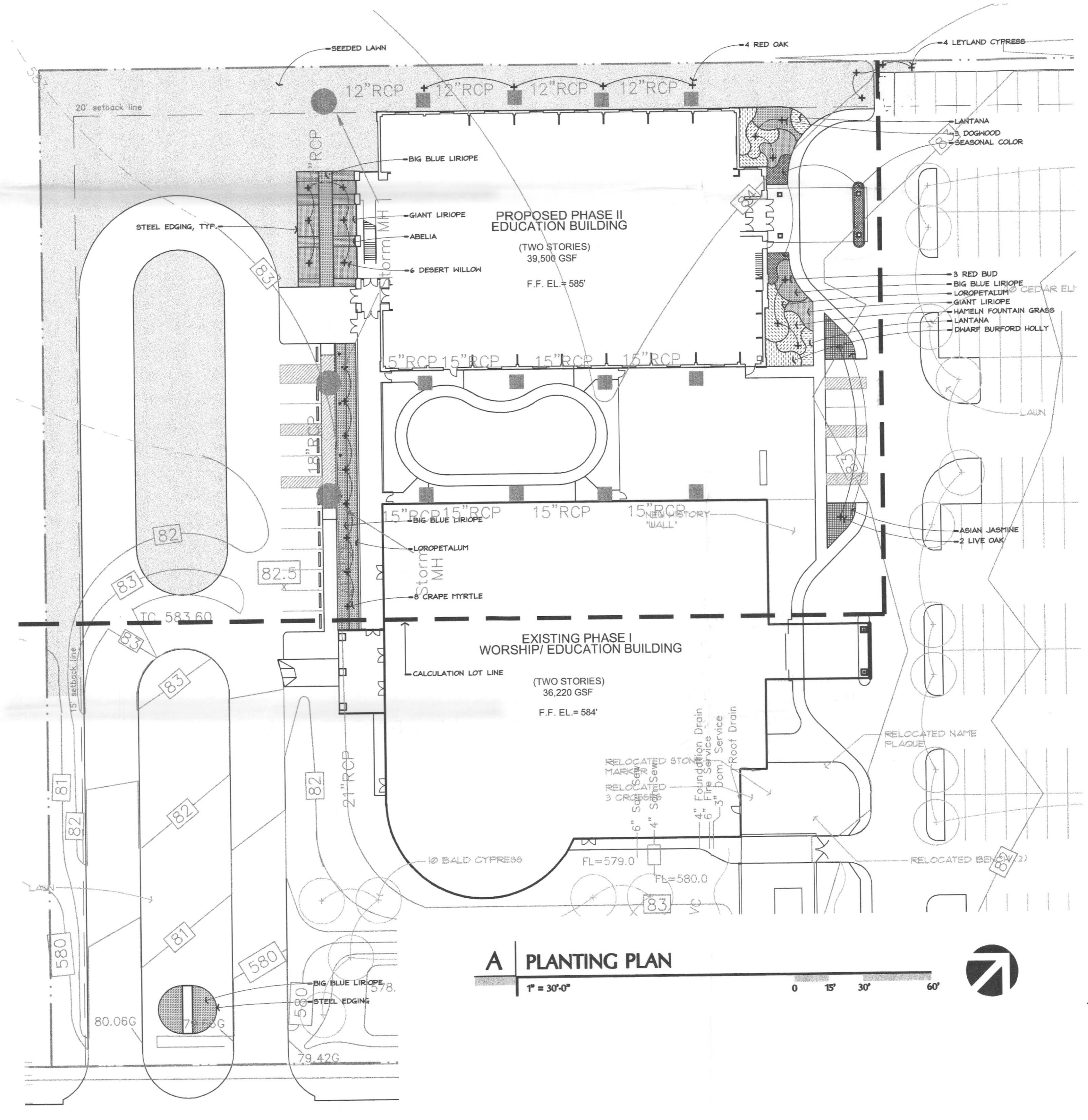
This plant listing is only for City of Rockwall review. See Section 02911 for a complete description of all plant materials.

PREPARATION GENERAL NOTES

1. PLAN PREPARED BY:
MICHAEL S. KENDALL
KENDALL + LANDSCAPE ARCHITECTURE
5646 MILTON STREET
SUITE 735
DALLAS, TEXAS 75206
(214) 739-3226
TEXAS LANDSCAPE ARCHITECT LICENSE NO. 1127
2. ALL AREAS SHALL BE IRRIGATED BY AN AUTOMATIC UNDERGROUND IRRIGATION SYSTEM PROVIDING 100% COVERAGE.
3. ALL REQUIRED TREES ARE 3" MINIMUM CALIPER.
4. ALL REQUIRED TREES FROM THE CITY APPROVED LISTING.

PLANTING GENERAL NOTES

1. ALL SOIL EXCAVATION MAY BE DISPOSED OF ON SITE.
2. IF A LIVE UTILITY IS ENCOUNTERED DURING EXCAVATION, CONTACT OWNER'S REPRESENTATIVE.
3. SEE SPECIFICATION SECTION 02910 - 02940 FOR A COMPLETE DESCRIPTION OF PLANT MATERIAL AND INSTALLATION.
4. ALL BEDS MUST BE LAID OUT AND APPROVED PRIOR TO THE INSTALLATION OF THE IRRIGATION FOR COORDINATION.
5. ALL PLANT MATERIAL SHALL BE STAKED AND APPROVED BY THE LANDSCAPE ARCHITECT PRIOR TO PLANT INSTALLATION.
6. ALL PLANTING DETAILS ARE TYPICAL.
7. ALL DISTURBED AREAS WITHIN THE PROJECT LIMITS MUST BE EITHER HYDROMULCHING OR SOLID SODDED UNLESS NOTED.



A PLANTING PLAN
1" = 30'-0"

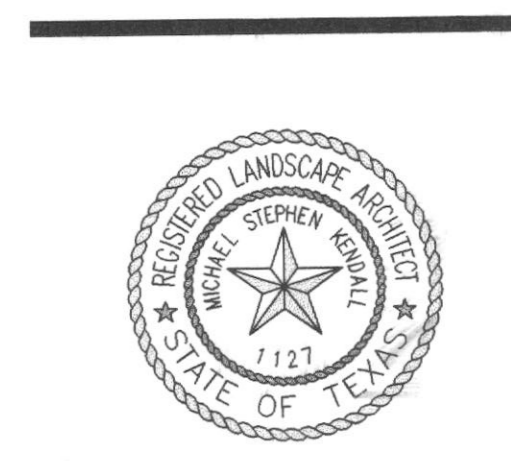
PHASE II

Elizabeth Cameron
Christian
Education Building

First United
Methodist
Church

Rockwall, TX

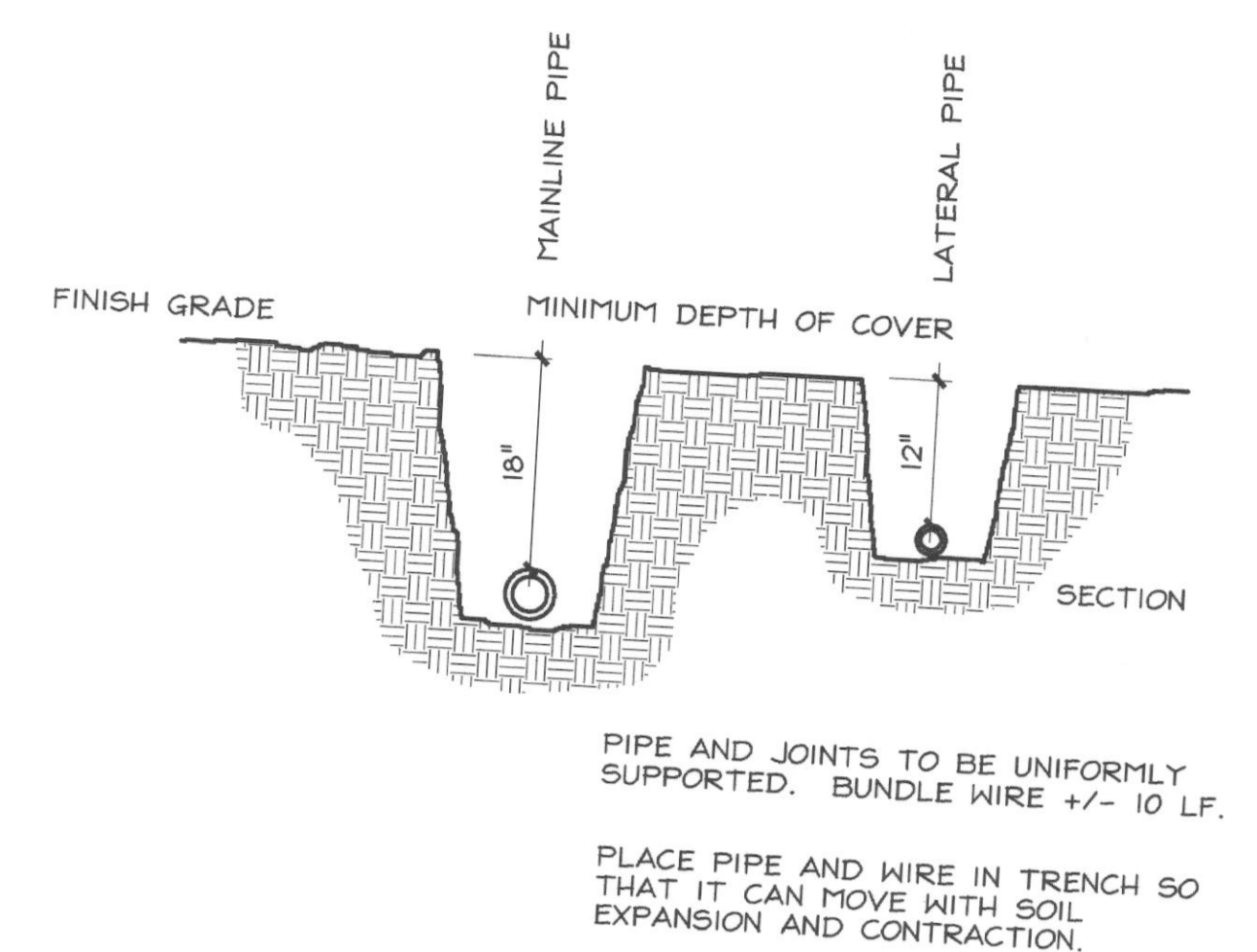
Design
Development



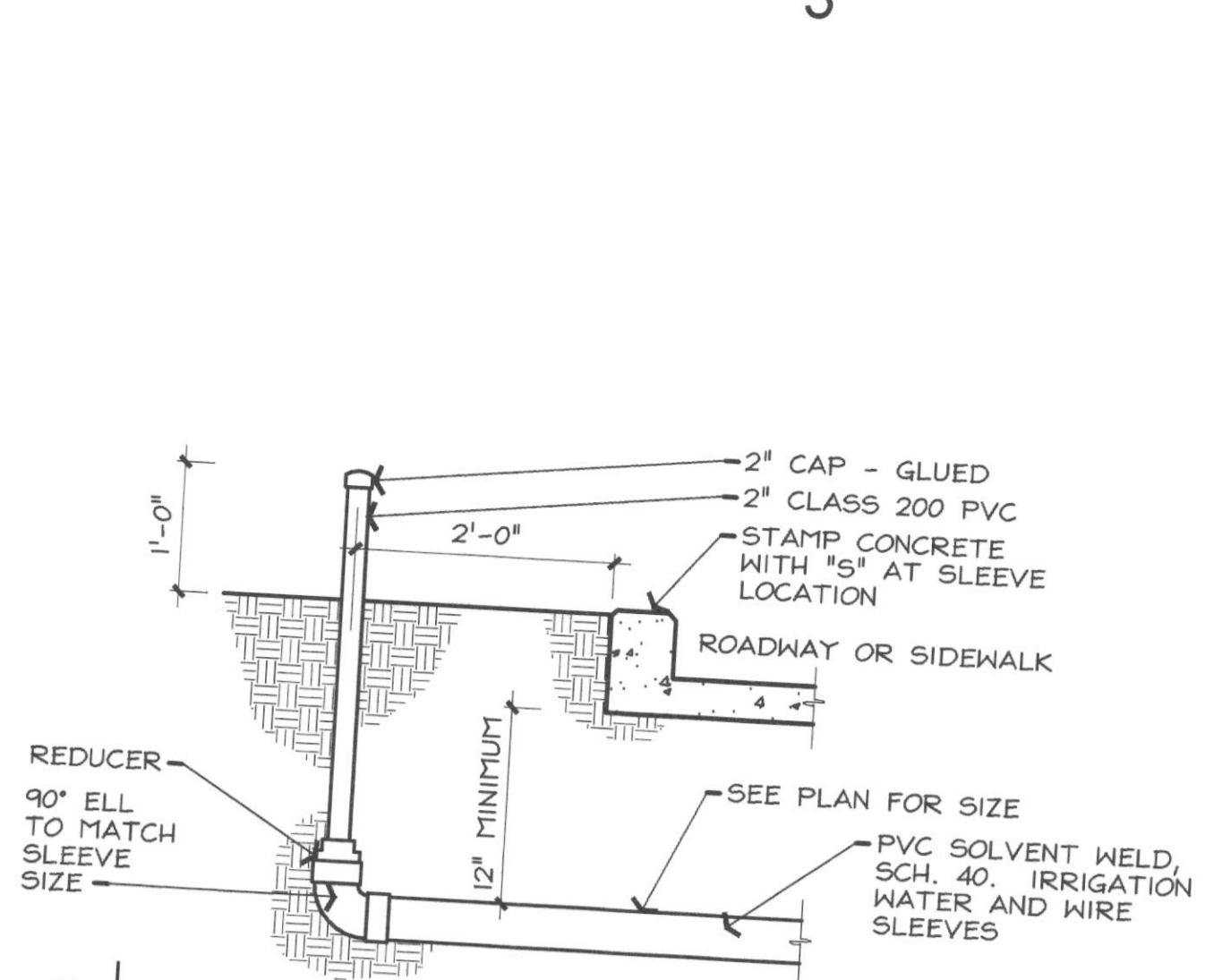
REVISIONS

Landscape Plan

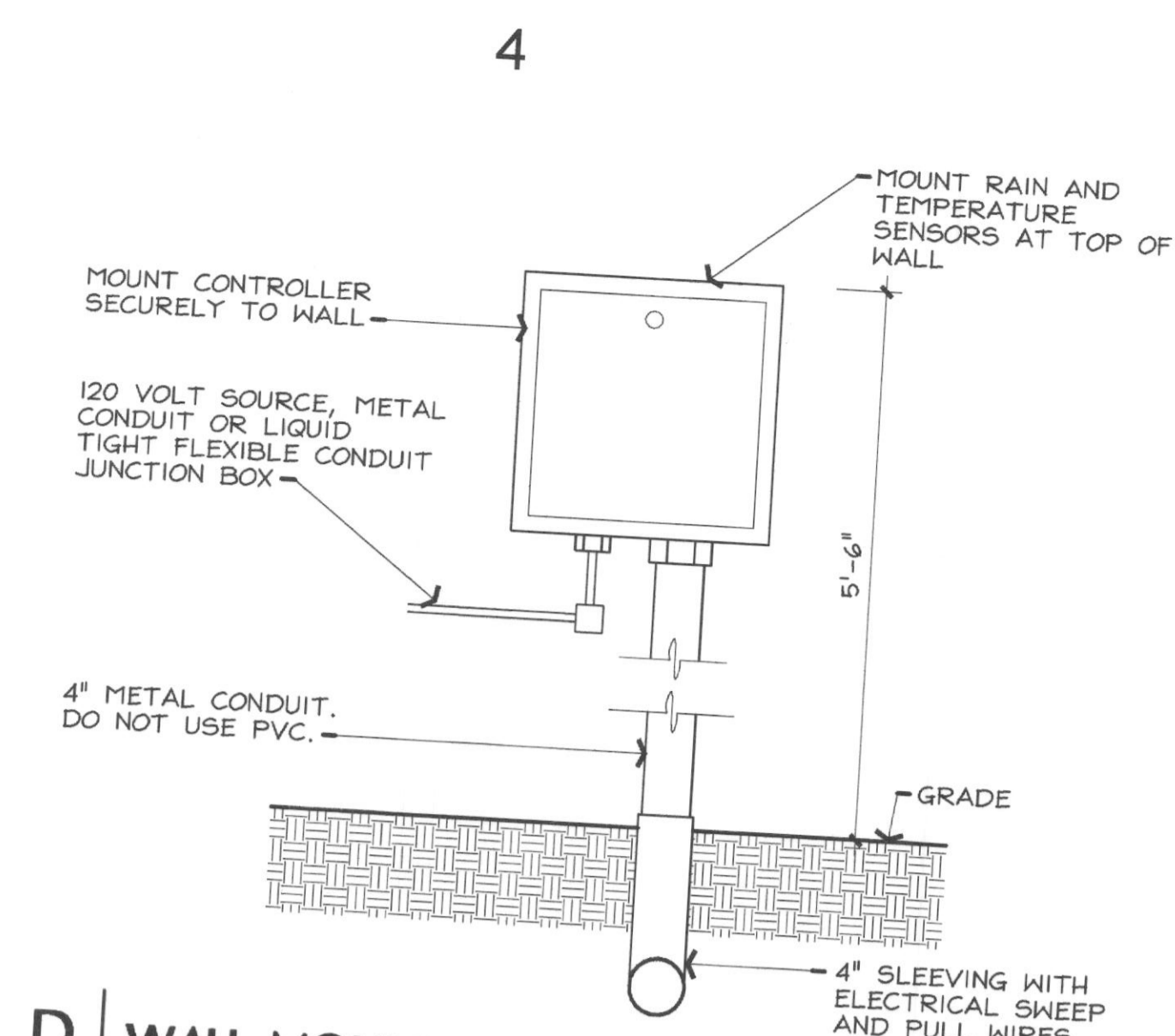
2006 001
RECEIVED
JAN 13 2006
L1.1
FILE COPY
JOB NO: 2004-02
DATE: 12/06/05
DRAWN BY: DRG/MSK
FILE:
©CSPPH&G 2005



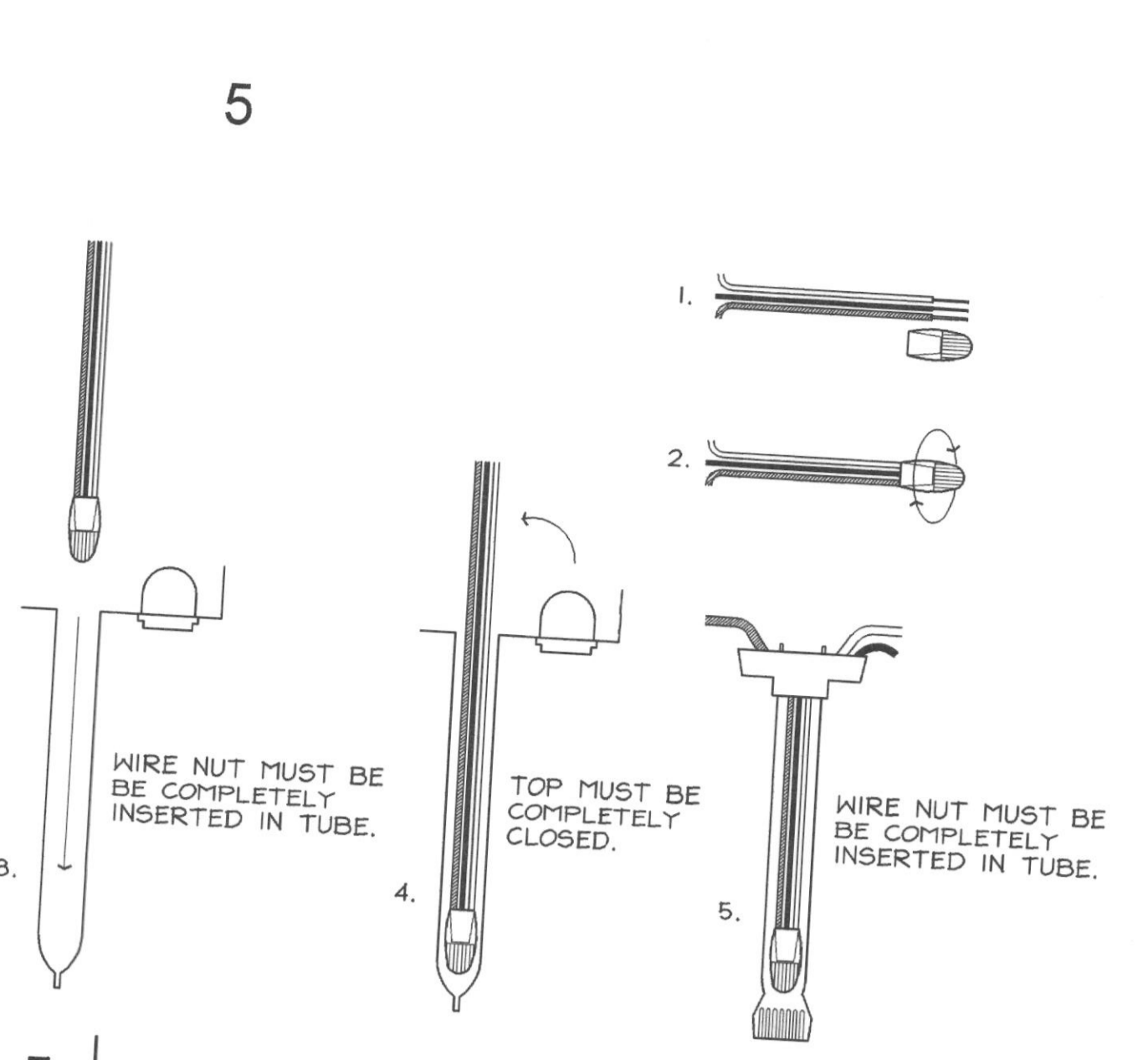
B TRENCH DEPTH - SECTION
3/4" = 1'-0"



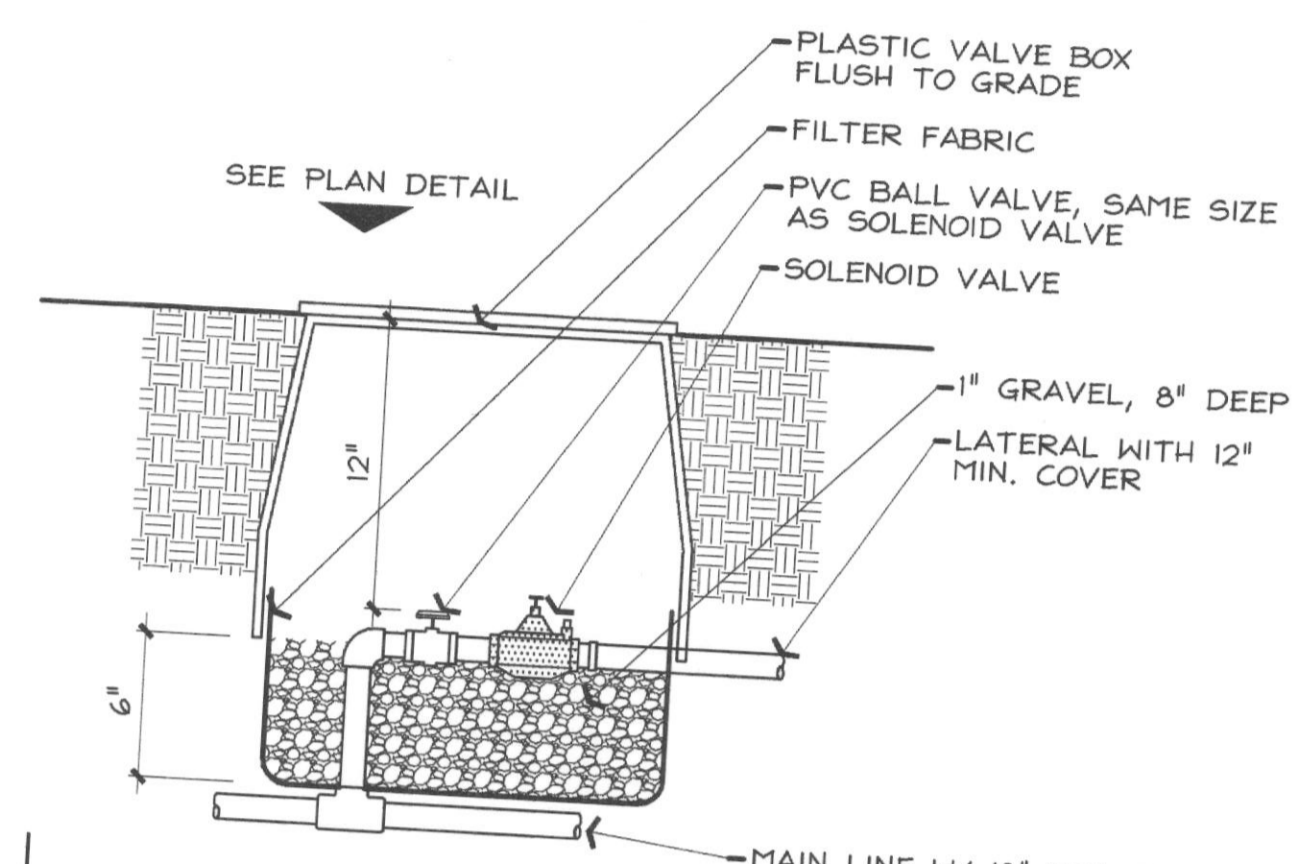
C IRRIGATION SERVICE SLEEVE
3/4" = 1'-0"



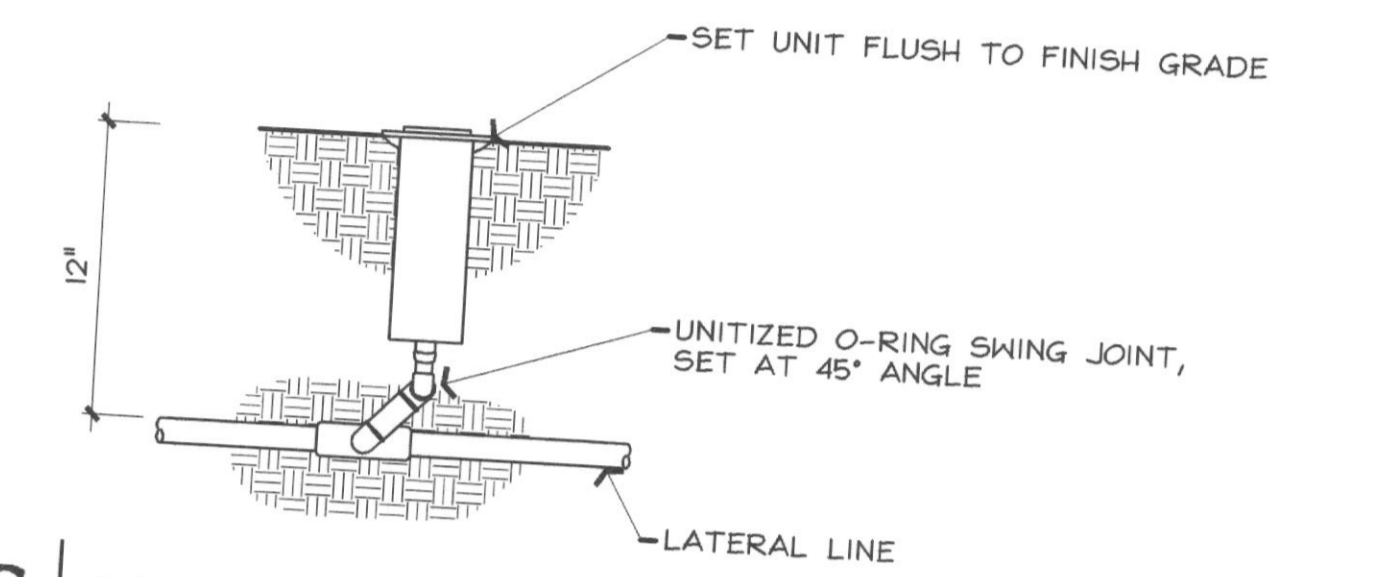
D WALL MOUNTED CONTROLLER - ELEVATION
1" = 1'-0"



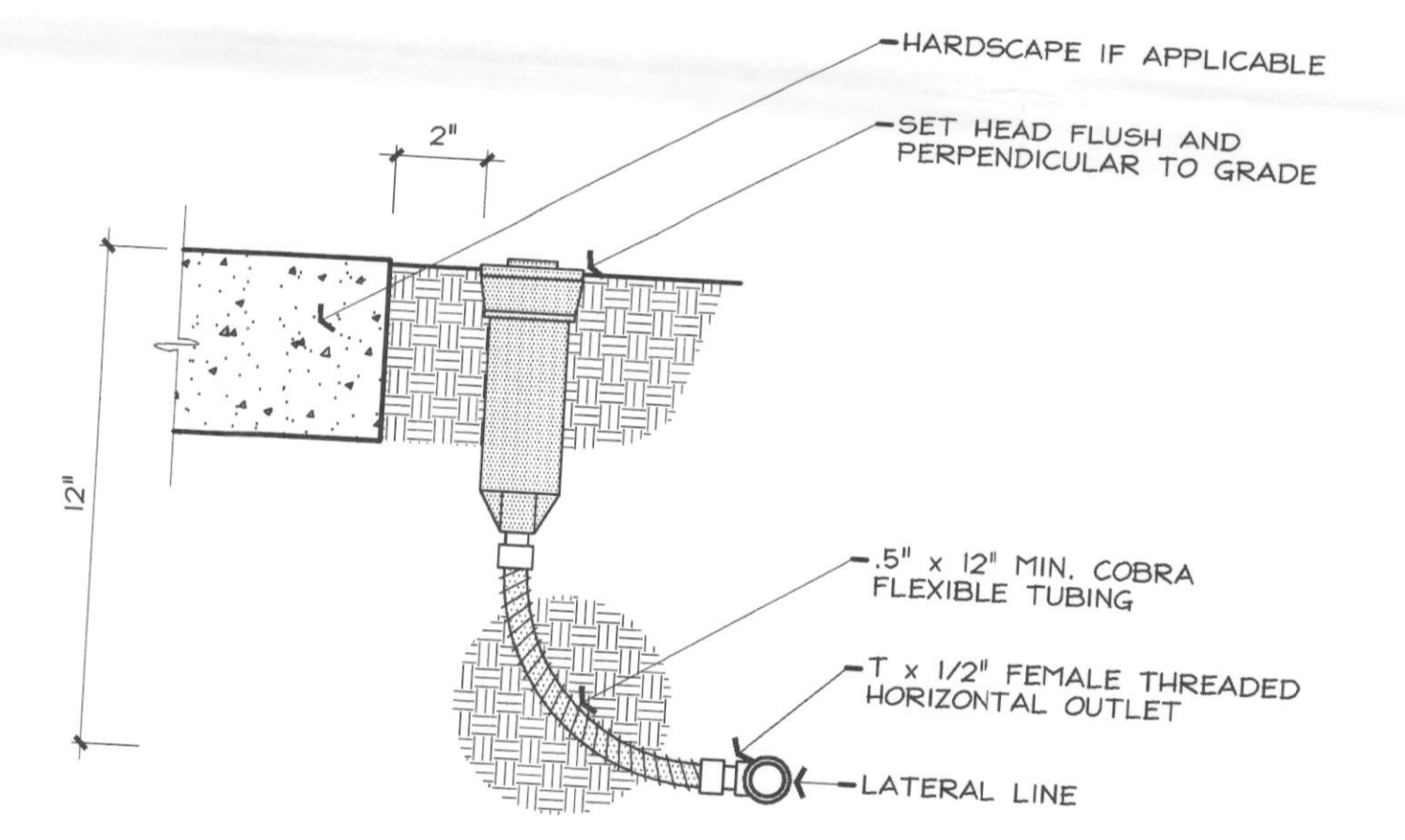
E 24 VOLT WIRE CONNECTIONS
NTS



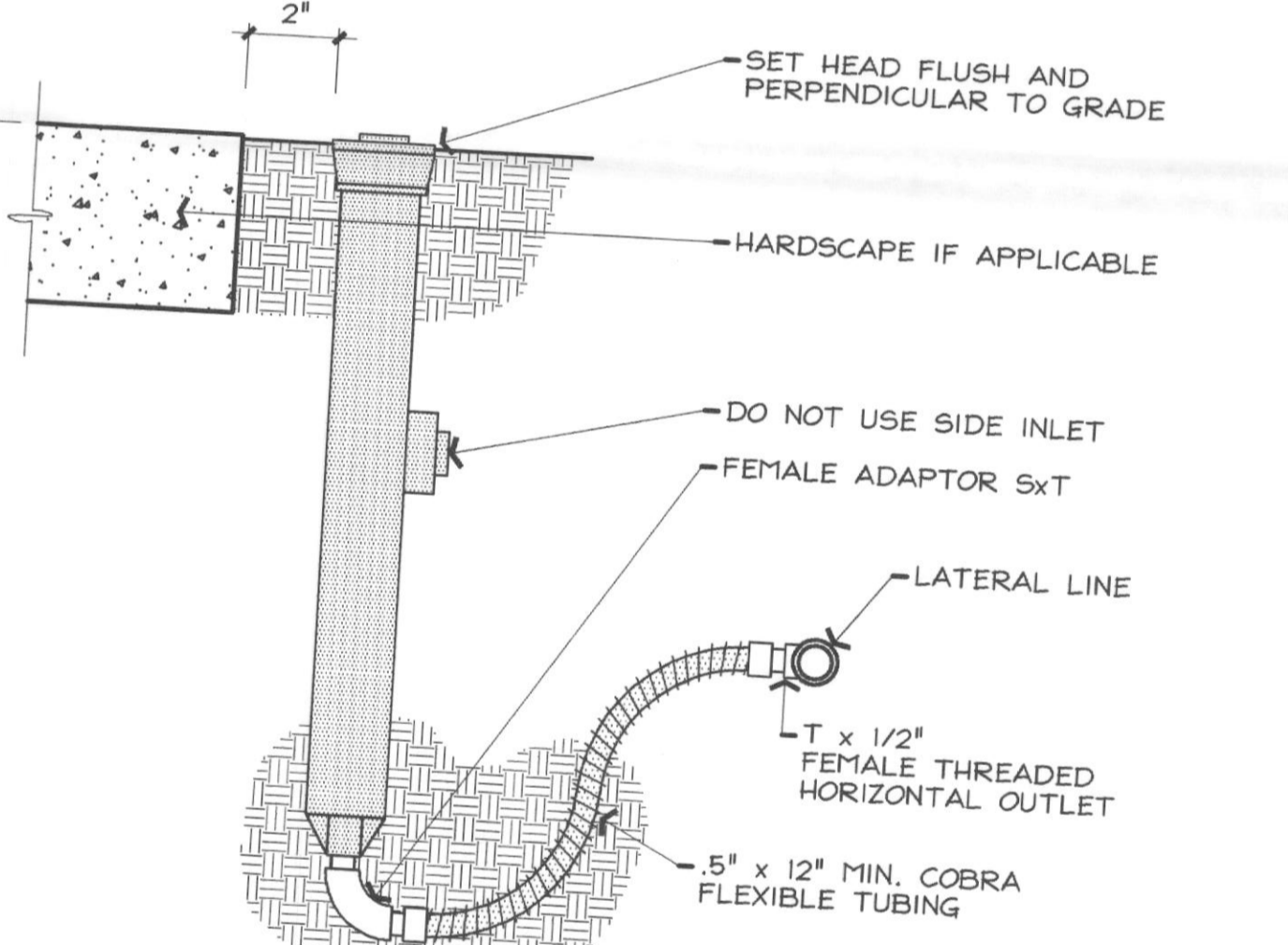
F SOLENOID VALVE IN PLASTIC VALVE BOX - SECTION
1 1/2" = 1'-0"



G ROTARY HEAD
1 1/2" = 1'-0"



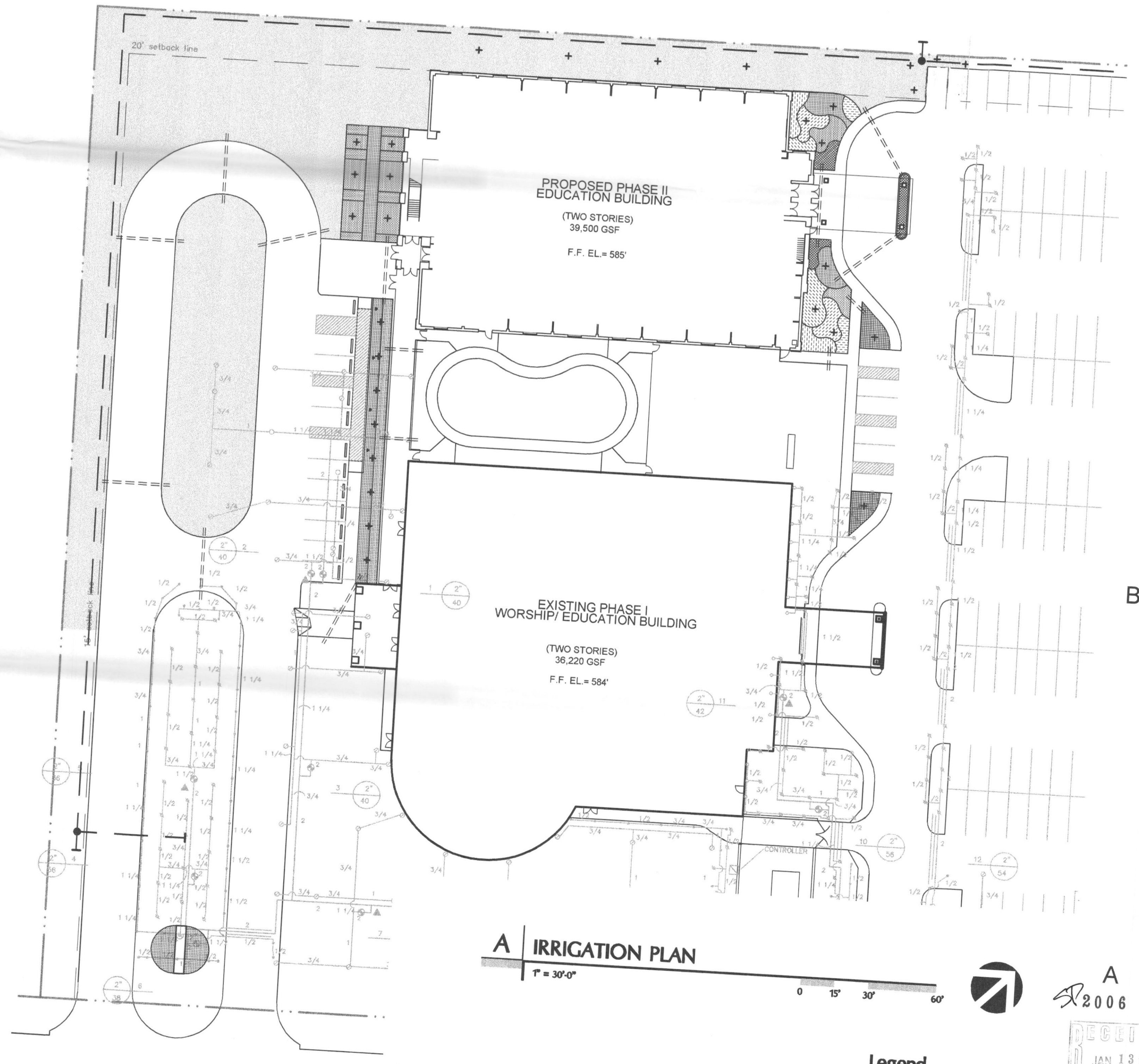
H 4\"/>



I 12\"/>

- IRRIGATION GENERAL NOTES**
- SEE SECTION 02810 - IRRIGATION SYSTEM FOR DESCRIPTION AND PRODUCT INFORMATION.
 - SEE PAVING DRAWING FOR SLEEVING AND METER LOCATION.
 - IRRIGATION COVERAGE SHALL BE 100% IN THE AREAS TO BE IRRIGATED.
 - NO IRRIGATION HEAD OR VALVE SHALL BE WITHIN THREE (3) FEET OF A WATER UTILITY.
 - ALL MAINLINE THREE (3) FEET FROM BACK OF THE CURB OR PAVING (EXCEPT FOR MAJOR INTERSECTIONS) UNLESS NOTED.
 - OVER SPRAY WITHIN THE RIGHT-OF-WAY IS PROHIBITED.
 - VERIFY A STATIC WATER PRESSURE OF 60 PSI AT THE POINT OF CONNECTION BEFORE START OF INSTALLATION. IF LOWER, NOTIFY THE LANDSCAPE ARCHITECT OR OWNER'S REPRESENTATIVE FOR INSTRUCTIONS. FAILURE TO DO SO WILL RESULT IN THE CONTRACTOR LIABLE FOR ALL EXPENSES IN MAKING THE SYSTEM OPERATIONAL.
 - ALL PIPING SHALL BE FLUSHED OF ALL DEBRIS PRIOR TO INSTALLING HEADS AND NOZZLES.
 - NO WIRE SPLICES WILL BE ALLOWED BETWEEN THE CONTROLLER AND THE SOLENOID VALVES. THE VALVE "COMMON" WIRE SHALL BE SPLICED ONLY AT THE SOLENOID VALVE AND WITHIN THE VALVE BOXES.
 - CONTRACTOR TO ARRANGE VALVE BOXES IN A STRAIGHT LINE AND EVENLY SPACED AND AT NO TIME CLOSER THAN 3' FROM ANY HARDSCAPE. SEE DETAILS.

- IRRIGATION LEGEND**
- RAINBIRD #1804 POP UP SPRAY HEAD WITH 8" MPR NOZZLE UNLESS NOTED OTHERWISE.
 - RAINBIRD #1804 POP UP SPRAY HEAD WITH MPR SERIES NOZZLE AS NOTED BELOW.
 - RAINBIRD #1804 POP UP SPRAY HEAD WITH 4"-SST / 4"-EST MPR SERIES NOZZLE.
 - RAINBIRD #1812 POP UP SPRAY HEAD WITH MPR SERIES NOZZLE AS NOTED BELOW.
 - HUNTER POP 4" POP UP ROTARY HEAD, PART CIRCLE, #8 NOZZLE.
 - HUNTER POP 4" POP UP ROTARY HEAD, FULL CIRCLE, #10 NOZZLE.
 - RAINBIRD PEB SERIES ELECTRIC REMOTE CONTROL VALVE.
 - RAINBIRD #3RC QUICK COUPLING VALVE.
 - FEBCO 850 SERIES D.C.A. INSTALLED PER CITY CODE.
 - IRRIGATION WATER METER AND TAP.
 - HUNTER ICC-M SERIES AUTOMATIC CONTROLLER W/ MINI-CLICK RAIN & FREEZE SENSORS.
 - CLASS 200 PVC MAINLINE PIPE.
 - CLASS 200 (EXCEPT 1/2 INCH #315) PVC LATERAL PIPE.
 - CLASS 200 SLEEVE PIPES.



A IRRIGATION PLAN
1" = 30'-0"

Legend
 --- MAINLINE
 ===== 4" SLEEVE



F&S PARTNER
 ARCHITECTURE
 INTERIOR DESIGN
 PLANNING
 8350 NORTH CENTRAL EXPRESSWAY
 SUITE 500
 DALLAS, TEXAS 75206
 214-559-4851
 214-526-7237 FAX

KENDALL • Landscape Architecture
 Michael S. Kendall, ASLA
 The Meadows Building
 5640 Millon, Suite 713
 Dallas, Texas 75206
 Phone: (214) 739-3226
 Fax: (214) 373-9802

PHASE II
 Elizabeth Cameron
 Christian Education Building
 First United
 Methodist Church
 Rockwall, TX

Design
 Development



REVISIONS
 Irrigation Plan

2006 001
 RECEIVED
 JAN 13 2006
L2.1
 FILE COPY
 JOB NO: 2004-02
 DATE: 12/06/05
 DRAWN BY: DRG/MSK

Property Line

20' setback line

**PROPOSED PHASE II
EDUCATION BUILDING**

(TWO STORIES)
39,500 GSF

F.F. EL. = 585'

**EXISTING PHASE I
WORSHIP/ EDUCATION BUILDING
(600 seats)**

(TWO STORIES)
36,220 GSF

F.F. EL. = 584'

YELLOWJACKET LANE

TOWNSEND ROAD

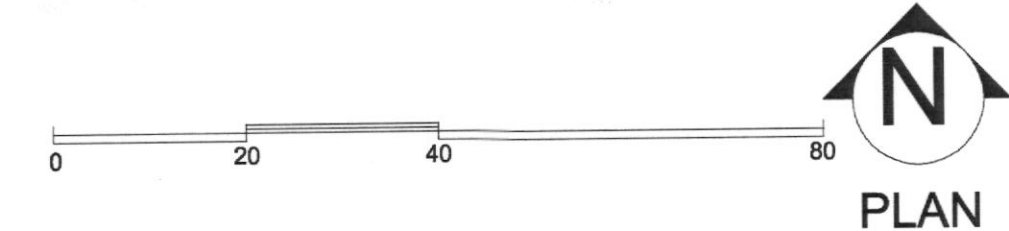
Property Line

Property Line

- Notes:**
1. Site lighting fixtures noted with an asterisk (*) are new fixtures for Phase II.
 2. Site lighting fixtures installed for Phase II to match fixtures in Phase I.
 3. Calculations taken at grade level.

*Small mounting height
shall not exceed
30-ft, including
pole base!*

First United Methodist Church
Phase II Education Building
January 13, 2006
Site Photometric



STATISTICS

Description	Symbol	Avg	Max	Min	Max/Min	Avg/Min
Lot	+	0.8 fc	6.4 fc	0.0 fc	N/A	N/A
Property Line	+	0.0 fc	0.2 fc	0.0 fc	N/A	N/A

NOTES 1. Calc at grade level

LUMINAIRE SCHEDULE

Symbol	Label	Qty	Catalog Number	Description	Lamp	File	Lumens	LLF	Watts
SC	10	SW3-32PL277/DB-P	KIM WALLFORM LUMINAIRE CAST ALUM HEAD WALL MOUNT	1 - 32W TRT	SW150MH.ies	2400	0.85	32	
SCP	5	SL1/070MH277	KIM SITE LIGHTFORM LUMINAIRE CAST ALUM HEAD EXTRUDED ALUM SHAFT	70 WATT MH COATED	SI170mh.ies	5150	0.72	70	
SD	8	2B/ET4/400PMH27/DB-P	KIM ENTABLATURE CUTOFF LUMINAIRE DIE CAST ALUM	400 WATT CLEAR, MH	ET4-400M.ies	40000	0.72	800	
SE	12	NK1-CM-M175-VS-277-DBZ	SPAUDLING NEWARK CEILING MOUNT	175W MH	L3125NKPl.ies	15000	0.72	175	

2006 001
FILE COPY
RECEIVED
JAN 13 2006