



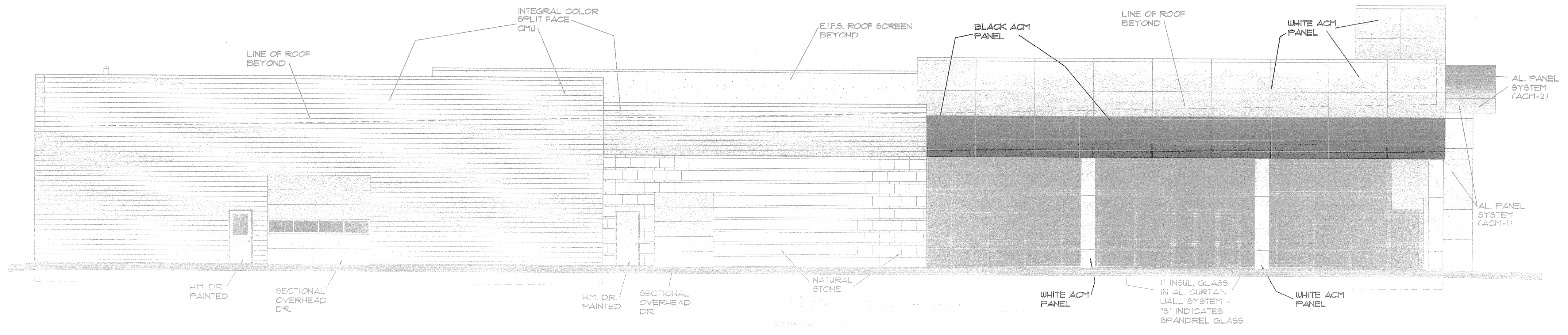
ISSUED

1	05/15/14 / APPLICATION
2	
3	
4	
5	
6	
7	
8	

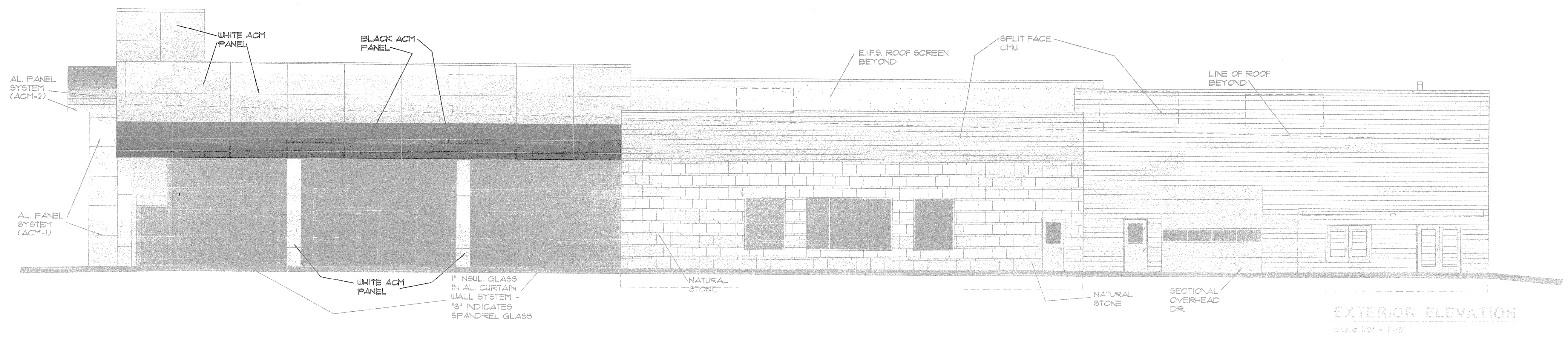
THIS DRAWING INDICATES THE GENERAL SCOPE OF THE PROJECT IN TERMS OF THE ARCHITECTURAL DESIGN CONCEPT, THE DIMENSIONS OF THE BUILDING, THE MAJOR ARCHITECTURAL ELEMENTS AND THE TYPE OF STRUCTURAL, MECHANICAL AND ELECTRICAL SYSTEMS. AS SCOPE DOCUMENTS, THE DRAWINGS DO NOT NECESSARILY INDICATE OR DESCRIBE ALL WORK REQUIRED FOR FULL PERFORMANCE AND COMPLETION OF THE REQUIREMENTS OF THE CONTRACT DOCUMENTS ON THE BASIS OF THE SCOPE INDICATED OR DESCRIBED. THE CONTRACTOR SHALL FURNISH ALL ITEMS FOR THE PROPER EXECUTION OF THE WORK.

**COPYRIGHT**  
THE CONTENT OF THESE DOCUMENTS ARE AND REMAIN THE PROPERTY OF:

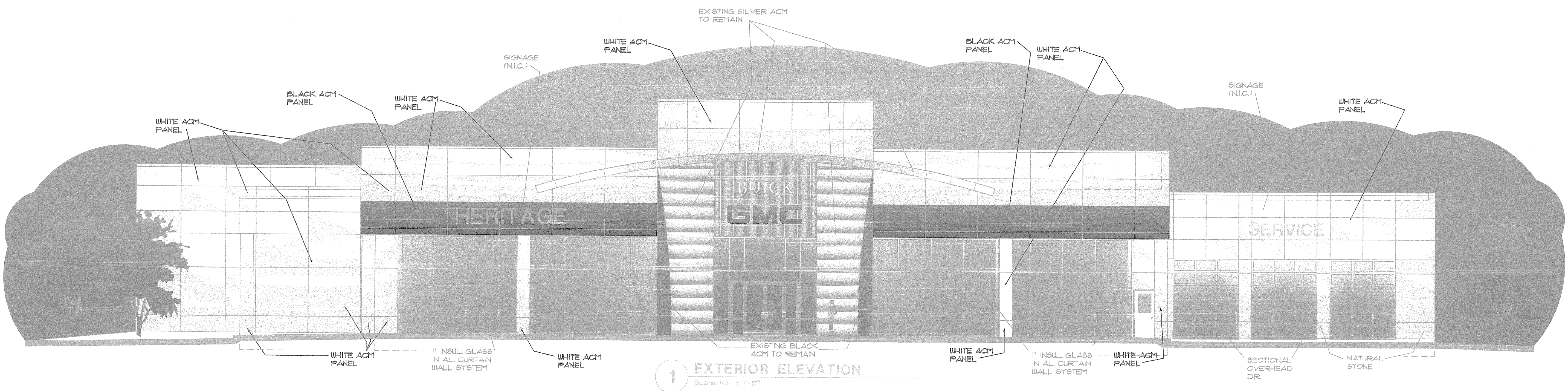
**USE OF THESE DOCUMENTS IS PROHIBITED**  
WITHOUT THE KNOWLEDGE AND WRITTEN PERMISSION OF THE ARCHITECT.



**NEW EXTERIOR MATERIAL CHANGES**  
**RED NOTES:** PROPOSED NEW MATERIAL PER COLOR BOARD  
**BLACK NOTES:** EXISTING MATERIALS TO REMAIN.



**EXTERIOR ELEVATION**  
Scale 1/8" = 1'-0"



**1 EXTERIOR ELEVATION**  
Scale 1/8" = 1'-0"

sh1-A31  
plot scale: 1" = 8'

**NRAC**  
NORTH ARCHITECTS, LLC

206 South Bois D'Arc  
Forsyth, TX 75126  
469 689-0050  
P.O. Box 908  
Forsyth, TX 75126  
469 689-0055

PROPOSED FACADE CHANGE  
**HERITAGE**  
**BUICK-GMC**  
 ROCKWALL, TEXAS

PROJECT NO.  
2013-09

**A3.1**



**Heritage B-GMC**  
Rockwall, Texas

Artists Rendering



**NADC Architects LLC**

**AUTOMOTIVE RETAIL FACILITY DESIGN**

P.O. Box 908 + 206 S Bois D Arc + Forney, TX 75126

Voice: 469-689-0050 fax: 469-689-0055 [www.nadc.net](http://www.nadc.net)

WE SPECIALIZE IN THE NATIONWIDE DESIGN AND CONSTRUCTION MANAGEMENT OF QUALITY AUTOMOBILE SALES AND SERVICE FACILITIES



# Heritage B-GMC

Rockwall, Texas

## EXTERIOR MATERIALS LEGEND-(EXISTING)

REFER TO ELEVATION DRAWINGS AND RENDERING FOR LOCATIONS OF EXISTING MATERIALS

FINISH	DESCRIPTION
NATURAL STONE	CHOPPED OR CUT AUSTIN WHITE LIMESTONE
GLAZED CMU	'TRENWYTH' ABSTRA-GLAZE CMU (TILE ON CMU) WHITE = 'WHITMAN WHITE' BLACK = 'EBONY'
SPLIT FACE CMU	SUPERLITE SPLITFACE - 'BONE'
ALUMINUM PANEL SYSTEM	ALPOLIC COMPOSIT ALUMINUM PANEL ACM-1 = TBL BLACK ACM-2 = HAIRLINE ALUMINUM ACM-4 = HIGH POLISHED
E.I.F.S.	'DRYVIT' - BRITE WHITE

## EXTERIOR MATERIALS LEGEND-(PROPOSED)

REFER TO ELEVATION DRAWINGS FOR LOCATION OF PROPOSED NEW ACM PANEL CLADDING MATERIALS (WEST, SOUTH, AND EAST FACADE). (GLADDING CHANGES IN BOLD TYPE BELOW)

FINISH	DESCRIPTION
NATURAL STONE	CHOPPED OR CUT AUSTIN WHITE LIMESTONE
GLAZED CMU	'TRENWYTH' ABSTRA-GLAZE CMU (TILE ON CMU) WHITE = 'WHITMAN WHITE' BLACK = 'EBONY'
SPLIT FACE CMU	SUPERLITE SPLITFACE - 'BONE'
<b>ALUMINUM PANEL SYSTEM (PROPOSED)</b>	<b>ALPOLIC COMPOSIT ALUMINUM PANEL</b> <b>WHITE ACM (SOUTH FACADE)</b> <b>BLACK ACM (SOUTH FACADE)</b>
E.I.F.S.	'DRYVIT' - BRITE WHITE

## MATERIALS PER CENTAGE (EXISTING)

ELEVATION	PRIMARY	SECONDARY
<b>SOUTH (FACING STREET)</b> MASONRY, (GLAZED CMU, CMU, NATURAL STONE) NATURAL STONE = 21% OF MASONRY	90.28%	
COMPOSITE ALUMINUM PANEL		9.72%
<b>EAST (FACING STREET)</b> MASONRY, (GLAZED CMU, CMU, NATURAL STONE) NATURAL STONE = 20.2% OF MASONRY	87.4%	
COMPOSITE ALUMINUM PANEL		2.6%
<b>NORTH (NON FACING STREET)</b> MASONRY, (CMU, NATURAL STONE) NATURAL STONE (NOT REQUIRED) = 12.6% OF MASONRY	100.0%	
COMPOSITE ALUMINUM PANEL		0.0%
<b>WEST (NON FACING STREET)</b> MASONRY, (GLAZED CMU, CMU, NATURAL STONE) NATURAL STONE (NOT REQUIRED) = 13.5% OF MASONRY	87.4%	
COMPOSITE ALUMINUM PANEL		2.6%

## MATERIALS PER CENTAGE (PROPOSED)

ELEVATION	PRIMARY	SECONDARY
<b>SOUTH (FACING STREET)</b> MASONRY, (GLAZED CMU, CMU, NATURAL STONE) NATURAL STONE = 21% OF MASONRY	0.0%	
<b>COMPOSITE ALUMINUM PANEL</b>		100.0%
<b>EAST (FACING STREET)</b> MASONRY, (GLAZED CMU, CMU, NATURAL STONE) NATURAL STONE = 21.0% OF MASONRY	64.0%	
<b>COMPOSITE ALUMINUM PANEL</b>		36.0%
<b>NORTH (NON FACING STREET)</b> MASONRY, (CMU, NATURAL STONE) NATURAL STONE (NOT REQUIRED) = 12.6% OF MASONRY	100.0%	
COMPOSITE ALUMINUM PANEL		0.0%
<b>WEST (NON FACING STREET)</b> MASONRY, (GLAZED CMU, CMU, NATURAL STONE) NATURAL STONE (NOT REQUIRED) = 13.5% OF MASONRY	82.0%	
<b>COMPOSITE ALUMINUM PANEL</b>		21.0%

## NADC Architects LLC

AUTOMOTIVE RETAIL FACILITY DESIGN

P.O. Box 908 + 206 S Bois D Arc + Forney, TX 75126

Voice: 469-689-0050 Fax: 469-689-0055 www.nadc.net

Material Percentages

WE SPECIALIZE IN THE NATIONWIDE DESIGN AND CONSTRUCTION MANAGEMENT OF QUALITY AUTOMOBILE SALES AND SERVICE FACILITIES



**Heritage B-GMC**  
Rockwall, Texas

Product Board

Black ACM Panel

White ACM Panel

**NADC Architects LLC**

**AUTOMOTIVE RETAIL FACILITY DESIGN**

P.O. Box 908 + 206 S Bois D Arc + Forney, TX 75126

Voice: 469-689-0050 fax: 469-689-0055 [www.nadc.net](http://www.nadc.net)

WE SPECIALIZE IN THE NATIONWIDE DESIGN AND CONSTRUCTION MANAGEMENT OF QUALITY AUTOMOBILE SALES AND SERVICE FACILITIES