



# DEVELOPMENT APPLICATION

City of Rockwall  
Planning and Zoning Department  
385 S. Goliad Street  
Rockwall, Texas 75087

### STAFF USE ONLY

PLANNING & ZONING CASE NO. \_\_\_\_\_

**NOTE:** THE APPLICATION IS NOT CONSIDERED ACCEPTED BY THE CITY UNTIL THE PLANNING DIRECTOR AND CITY ENGINEER HAVE SIGNED BELOW.

DIRECTOR OF PLANNING: \_\_\_\_\_

CITY ENGINEER: \_\_\_\_\_

PLEASE CHECK THE APPROPRIATE BOX BELOW TO INDICATE THE TYPE OF DEVELOPMENT REQUEST [SELECT ONLY ONE BOX]:

#### PLATTING APPLICATION FEES:

- MASTER PLAT (\$100.00 + \$15.00 ACRE) <sup>1</sup>
- PRELIMINARY PLAT (\$200.00 + \$15.00 ACRE) <sup>1</sup>
- FINAL PLAT (\$300.00 + \$20.00 ACRE) <sup>1</sup>
- REPLAT (\$300.00 + \$20.00 ACRE) <sup>1</sup>
- AMENDING OR MINOR PLAT (\$150.00)
- PLAT REINSTATEMENT REQUEST (\$100.00)

#### SITE PLAN APPLICATION FEES:

- SITE PLAN (\$250.00 + \$20.00 ACRE) <sup>1</sup>
- AMENDED SITE PLAN/ELEVATIONS/LANDSCAPING PLAN (\$100.00)

#### ZONING APPLICATION FEES:

- ZONING CHANGE (\$200.00 + \$15.00 ACRE) <sup>1</sup>
- SPECIFIC USE PERMIT (\$200.00 + \$15.00 ACRE) <sup>1&2</sup>
- PD DEVELOPMENT PLANS (\$200.00 + \$15.00 ACRE) <sup>1</sup>

#### OTHER APPLICATION FEES:

- TREE REMOVAL (\$75.00)
- VARIANCE REQUEST/SPECIAL EXCEPTIONS (\$100.00) <sup>2</sup>

#### NOTES:

<sup>1</sup>: IN DETERMINING THE FEE, PLEASE USE THE EXACT ACREAGE WHEN MULTIPLYING BY THE PER ACRE AMOUNT. FOR REQUESTS ON LESS THAN ONE ACRE, ROUND UP TO ONE (1) ACRE.

<sup>2</sup>: A **\$1,000.00** FEE WILL BE ADDED TO THE APPLICATION FEE FOR ANY REQUEST THAT INVOLVES CONSTRUCTION WITHOUT OR NOT IN COMPLIANCE TO AN APPROVED BUILDING PERMIT.

### PROPERTY INFORMATION [PLEASE PRINT]

ADDRESS 1480 Justin Road

SUBDIVISION Indalloy Addition

LOT

2

BLOCK

1

GENERAL LOCATION Approx. 700 feet south of E. Washington St. and 450 feet west of Airport Rd.

### ZONING, SITE PLAN AND PLATTING INFORMATION [PLEASE PRINT]

CURRENT ZONING Light Industrial (LI)

CURRENT USE

Unoccupied Industrial Building

PROPOSED ZONING No Change

PROPOSED USE

Industrial Distribution Center

ACREAGE 43.0

LOTS [CURRENT]

1

LOTS [PROPOSED]

1

**SITE PLANS AND PLATS:** BY CHECKING THIS BOX YOU ACKNOWLEDGE THAT DUE TO THE PASSAGE OF HB3167 THE CITY NO LONGER HAS FLEXIBILITY WITH REGARD TO ITS APPROVAL PROCESS, AND FAILURE TO ADDRESS ANY OF STAFF'S COMMENTS BY THE DATE PROVIDED ON THE DEVELOPMENT CALENDAR WILL RESULT IN THE DENIAL OF YOUR CASE.

### OWNER/APPLICANT/AGENT INFORMATION [PLEASE PRINT/CHECK THE PRIMARY CONTACT/ORIGINAL SIGNATURES ARE REQUIRED]

OWNER Alvaplast U.S., Inc.

APPLICANT

Westwood Professional Services

CONTACT PERSON Carolina Molina

CONTACT PERSON

Arlyn Samuelson

ADDRESS 1480 Justin Road

ADDRESS

2901 Dallas Parkway, Suite 400

CITY, STATE & ZIP Rockwall, Texas 75087

CITY, STATE & ZIP

Plano, Texas 75093

PHONE 469-402-1232

PHONE

972-265-4860

E-MAIL cmolina@sprpackaging.com

E-MAIL

asamuelson@westwoodps.com

### NOTARY VERIFICATION [REQUIRED]

BEFORE ME, THE UNDERSIGNED AUTHORITY, ON THIS DAY PERSONALLY APPEARED \_\_\_\_\_ [OWNER] THE UNDERSIGNED, WHO STATED THE INFORMATION ON THIS APPLICATION TO BE TRUE AND CERTIFIED THE FOLLOWING:

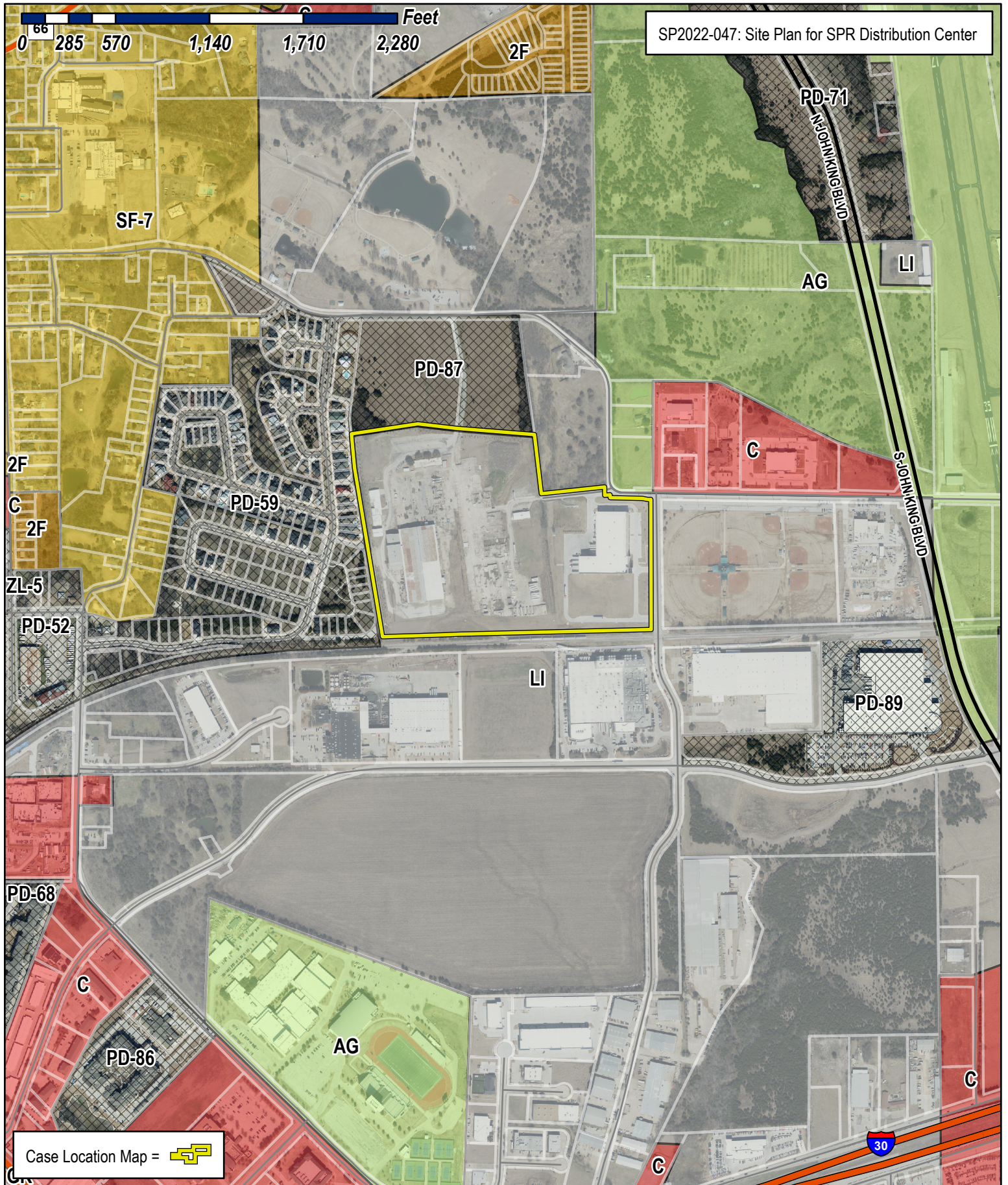
"I HEREBY CERTIFY THAT I AM THE OWNER FOR THE PURPOSE OF THIS APPLICATION; ALL INFORMATION SUBMITTED HEREIN IS TRUE AND CORRECT; AND THE APPLICATION FEE OF \$ \_\_\_\_\_, TO COVER THE COST OF THIS APPLICATION, HAS BEEN PAID TO THE CITY OF ROCKWALL ON THIS THE \_\_\_\_\_ DAY OF \_\_\_\_\_, 20\_\_\_\_. BY SIGNING THIS APPLICATION, I AGREE THAT THE CITY OF ROCKWALL (I.E. "CITY") IS AUTHORIZED AND PERMITTED TO PROVIDE INFORMATION CONTAINED WITHIN THIS APPLICATION TO THE PUBLIC. THE CITY IS ALSO AUTHORIZED AND PERMITTED TO REPRODUCE ANY COPYRIGHTED INFORMATION SUBMITTED IN CONJUNCTION WITH THIS APPLICATION, IF SUCH REPRODUCTION IS ASSOCIATED OR IN RESPONSE TO A REQUEST FOR PUBLIC INFORMATION."

GIVEN UNDER MY HAND AND SEAL OF OFFICE ON THIS THE \_\_\_\_\_ DAY OF \_\_\_\_\_, 20\_\_\_\_.

OWNER'S SIGNATURE \_\_\_\_\_

NOTARY PUBLIC IN AND FOR THE STATE OF TEXAS \_\_\_\_\_

MY COMMISSION EXPIRES \_\_\_\_\_

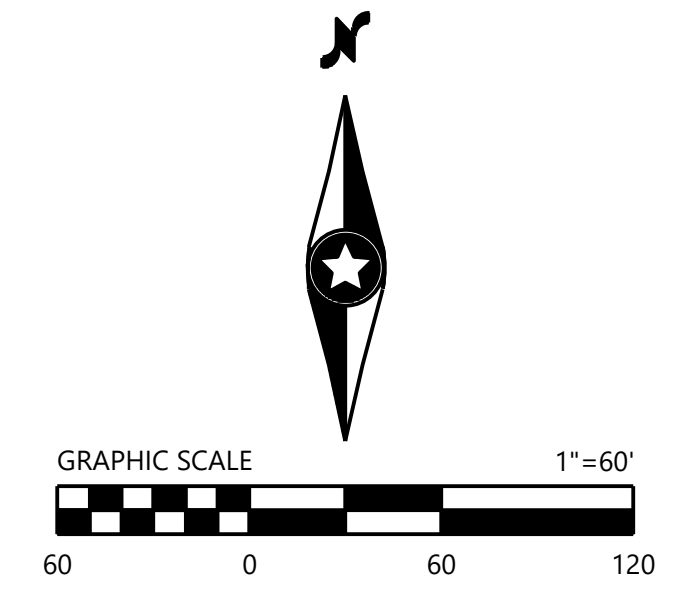
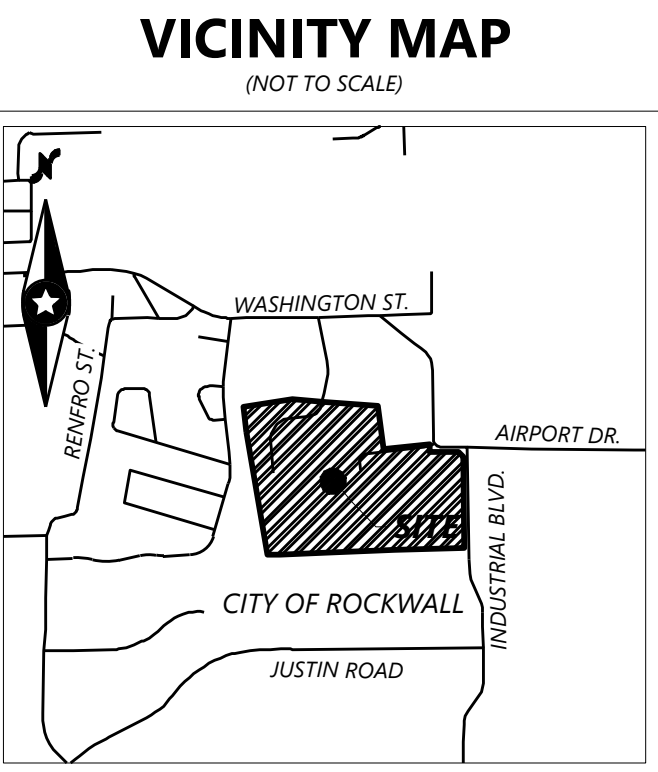
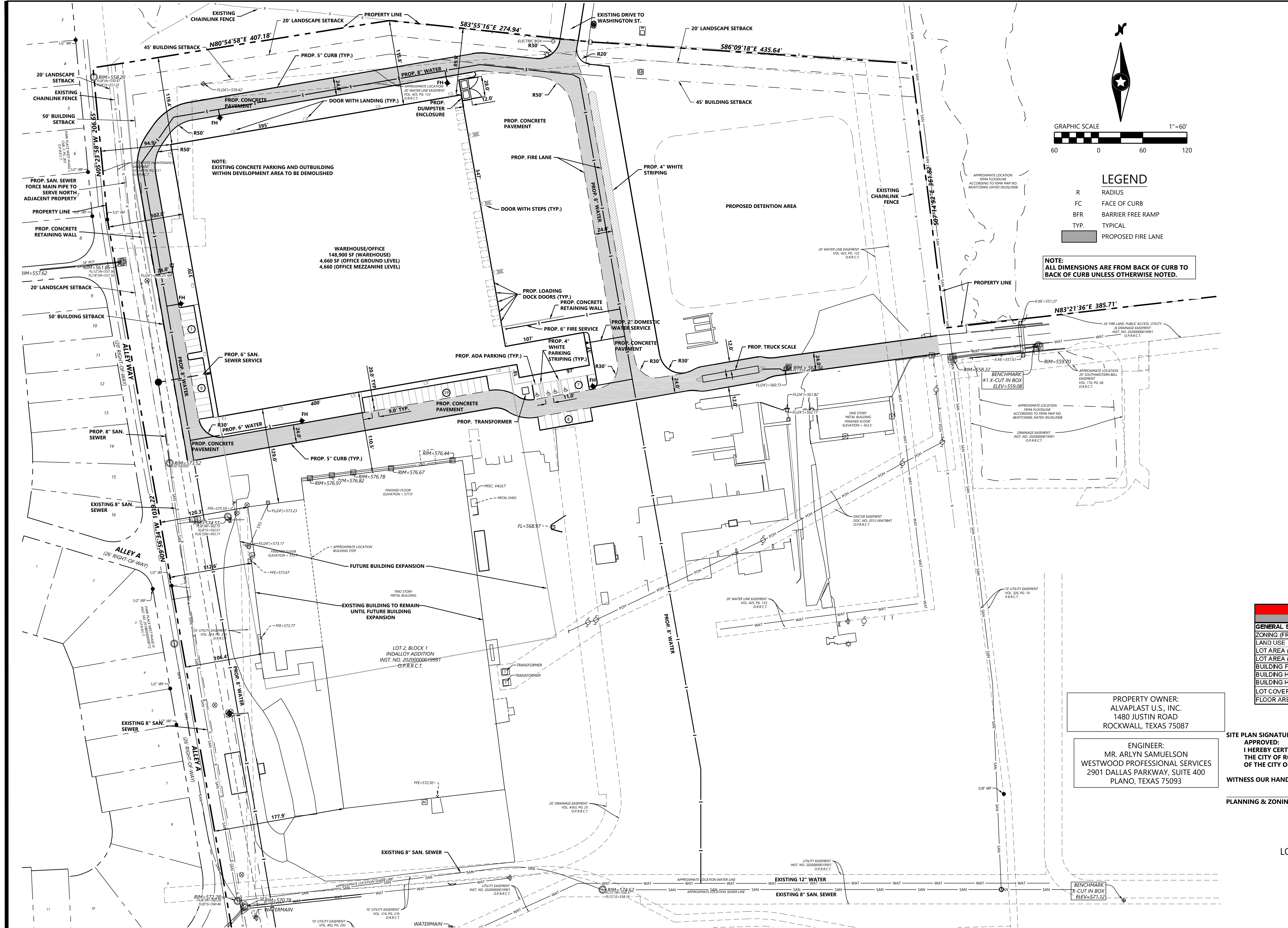


# City of Rockwall

Planning & Zoning Department  
 385 S. Goliad Street  
 Rockwall, Texas 75032  
 (P): (972) 771-7745  
 (W): www.rockwall.com

The City of Rockwall GIS maps are continually under development and therefore subject to change without notice. While we endeavor to provide timely and accurate information, we make no guarantees. The City of Rockwall makes no warranty, express or implied, including warranties of merchantability and fitness for a particular purpose. Use of the information is the sole responsibility of the user.





- LEGEND**
- R RADIUS
  - FC FACE OF CURB
  - BFR BARRIER FREE RAMP
  - TYP. TYPICAL
  - PROPOSED FIRE LANE

**NOTE:** ALL DIMENSIONS ARE FROM BACK OF CURB TO BACK OF CURB UNLESS OTHERWISE NOTED.

PARKING	
THE MINIMUM PARKING REQUIRED FOR A WAREHOUSE DISTRIBUTION CENTER IS TO BE "AS DETERMINED BY THE DIRECTOR" (PER CITY OF ROCKWALL UNIFIED DEVELOPMENT CODE, ARTICLE 06 "PARKING AND LOADING," TABLE 5 "PARKING REQUIREMENT SCHEDULE," UNDER THE CATEGORY "INDUSTRIAL AND MANUFACTURING LAND USES").	
PARKING COUNTS	
NUMBER OF EMPLOYEES IN 1ST SHIFT:	25
NUMBER OF EMPLOYEES IN 2ND SHIFT:	20
NUMBER OF DAILY VISITORS:	03
TOTAL PARKING SPACES NEEDED =	48
TOTAL PARKING SPACES PROVIDED =	50
ACCESSIBLE PARKING	
PER CITY OF ROCKWALL UNIFIED DEVELOPMENT CODE, ARTICLE 06 "PARKING AND LOADING," SECTION 05.04 "HANDICAPPED PARKING":	
TOTAL REQUIRED PARKING IN LOT:	REQUIRED NUMBER OF HANDICAPPED SPACES:
51-75	3
76-100	4
THIS PROJECT PROVIDES 4 ACCESSIBLE PARKING SPACES, WITHIN A TOTAL OF 50 PARKING SPACES PROVIDED.	

SITE DATA SUMMARY TABLE	
ITEM	LOT 1, BLOCK A
<b>GENERAL SITE DATA</b>	
ZONING (FROM ZONING MAP)	LIGHT INDUSTRIAL (LI)
LAND USE	WAREHOUSE W/OFFICE
LOT AREA (ACRES)	1.873,685
BUILDING FOOTPRINT AREA (SF) - PROPOSED	43,013
BUILDING HEIGHT (#STORIES)	1
BUILDING HEIGHT (FT-DIST TO TALLEST ELEMENT)	50'-4"
LOT COVERAGE (%)	8.20%
FLOOR AREA RATIO (X:XX:1)	0.08

PROPERTY OWNER:  
ALVAPLAST U.S., INC.  
1480 JUSTIN ROAD  
ROCKWALL, TEXAS 75087

ENGINEER:  
MR. ARLYN SAMUELSON  
WESTWOOD PROFESSIONAL SERVICES  
2901 DALLAS PARKWAY, SUITE 400  
PLANO, TEXAS 75093

**SITE PLAN SIGNATURE BLOCK**

APPROVED: \_\_\_\_\_  
I HEREBY CERTIFY THAT THE ABOVE AND FOREGOING SITE PLAN FOR A DEVELOPMENT IN THE CITY OF ROCKWALL, TEXAS, WAS APPROVED BY THE PLANNING & ZONING COMMISSION OF THE CITY OF ROCKWALL ON \_\_\_\_\_

WITNESS OUR HANDS, \_\_\_\_\_

PLANNING & ZONING COMMISSION, CHAIRMAN      DIRECTOR OF PLANNING AND ZONING

**SITE PLAN**  
SPR DISTRIBUTION CENTER  
LOCATED IN THE CITY OF ROCKWALL, TEXAS  
LOT 2, BLOCK 1  
INDALLOY ADDITION  
ROCKWALL COUNTY, TEXAS  
CASE # XXXXX  
SUBMITTED AUGUST 19, 2022

DESIGNED: \_\_\_\_\_  
CHECKED: \_\_\_\_\_  
DRAWN: \_\_\_\_\_  
HORIZONTAL SCALE: \_\_\_\_\_  
VERTICAL SCALE: \_\_\_\_\_

INITIAL ISSUE: XX/XX/XX  
REVISIONS: \_\_\_\_\_

PREPARED FOR:  
**SPR PACKAGING**  
1480 JUSTIN ROAD  
ROCKWALL, TEXAS 75087

**PRELIMINARY**  
FOR INTERIM REVIEW ONLY  
NOT TO BE USED FOR  
CONSTRUCTION OR  
BIDDING PURPOSES.  
Engineer: ARLYN SAMUELSON, P.E.  
P.E. No.: 95817  
Date: 08/19/2022  
**Westwood**

**SPR DISTRIBUTION CENTER**  
ROCKWALL, TEXAS

**Westwood**  
Phone (214) 473-4640 2901 Dallas Parkway, Suite 400  
Toll Free (888) 937-5150 Plano, TX 75093  
westwoodps.com  
Westwood Professional Services, Inc.  
TYPE FIRM REGISTRATION NO. F-11756  
TYPE FIRM REGISTRATION NO. 10074301

SHEET NUMBER:  
**1.00**  
DATE: 08/19/22  
PROJECT NUMBER: 0036677.00

SPR DISTRIBUTION CENTER











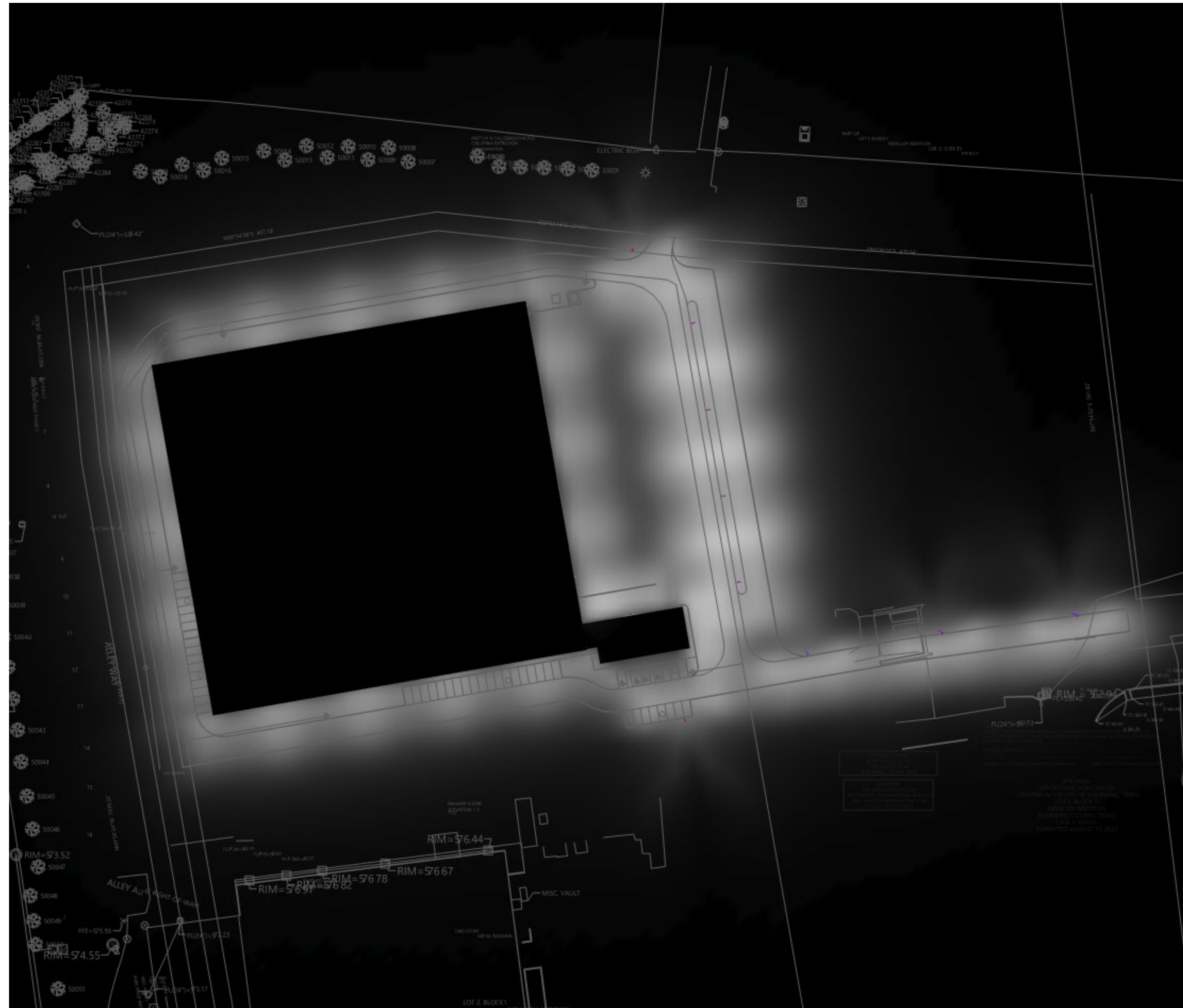




Luminaire Schedule							LLF	Lum. Lumens
Symbol	Label	Qty	Arrangement	Manufacturer & Part Number				
	2-P4	4	Back-Back	HUBBELL RAR2-480L-185-3K7-4W-U (x2 @ 180 degrees)			0.900	24226
	P3	3	Single	HUBBELL RAR2-480L-185-3K7-3-U			0.900	24684
	P4	2	Single	HUBBELL RAR2-480L-185-3K7-4W-U			0.900	24226
	W4	19	Single	HUBBELL RWL2-160L-115-3K7-4-U			0.900	14403

Calculation Summary										
Label	CalcType	Units	PtSpclR	PtSpctb	Avg	Max	Min	Avg/Min	Max/Min	Description
Overall Area	Illuminance	Fc	10	10	0.56	5.4	0.0	N.A.	N.A.	Readings taken at 0'-0" AFG
Property Line - North	Illuminance	Fc	10	N.A.	0.13	1.6	0.0	N.A.	N.A.	
Property Line - West	Illuminance	Fc	10	N.A.	0.03	0.1	0.0	N.A.	N.A.	Readings taken at 0'-0" AFG
Loading-Pkg-Drive Areas	Illuminance	Fc			2.32	5	1	2.32	5.00	Readings taken at 0'-0" AFG

Isoline Legend	
Illuminance (Fc)	
Color	Value
	0.1
	0.5
	1



Top View - Greyscale (Luminance)

NOTES:

- 1) Fixture Mounting Heights (MH) are indicated next to each fixture.
- 2) All fixtures labeled with "\_alt" indicates an alternative fixture different from what was listed in the fixture schedule received was used in this calculation
- 3) Interior reflectances 80/50/20; exterior reflectances 20% UON.
- 4) Quantity (QTY) indicated on HLPS Luminaire Schedule is for what is included in this calculation study only - Not final counts.
- 5) Contractor to verify exact fixture quantities and fixture run lengths before ordering.

PROPERTY OWNER:  
ALVAPLAST U.S., INC.  
1480 JUSTIN ROAD  
ROCKWALL, TEXAS 75087

ENGINEER:  
MR. ARLYN SAMUELSON  
WESTWOOD PROFESSIONAL SERVICES  
2901 DALLAS PARKWAY, SUITE 400  
PLANO, TEXAS 75093

SITE PLAN SIGNATURE BLOCK  
APPROVED:  
I HEREBY CERTIFY THAT THE ABOVE AND FOREGOING SITE PLAN FOR A DEVELOPMENT IN THE CITY OF ROCKWALL, TEXAS, WAS APPROVED BY THE PLANNING & ZONING COMMISSION OF THE CITY OF ROCKWALL ON \_\_\_\_\_

WITNESS OUR HANDS, \_\_\_\_\_

PLANNING & ZONING COMMISSION, CHAIRMAN

DIRECTOR OF PLANNING AND ZONING

SITE PLAN  
SPR DISTRIBUTION CENTER  
LOCATED IN THE CITY OF ROCKWALL, TEXAS  
LOT 2, BLOCK 1  
INDALLOY ADDITION  
ROCKWALL COUNTY, TEXAS  
CASE # XXXXX  
SUBMITTED AUGUST 19, 2022

Project Name: SPR Warehouse Site  
Client:  
Drawn By: JOW, LC

Project # :  
Date: 8/19/2022  
Version: REV 2



THE ENGINEER AND/OR ARCHITECT MUST DETERMINE APPLICABILITY OF THE LAYOUT TO EXISTING / FUTURE FIELD CONDITIONS. THIS LIGHTING LAYOUT REPRESENTS ILLUMINATION LEVELS CALCULATED FROM LABORATORY DATA TAKEN UNDER CONTROLLED CONDITIONS IN ACCORDANCE WITH ILLUMINATING ENGINEERING SOCIETY APPROVED METHODS. ACTUAL PERFORMANCE OF ANY MANUFACTURER'S LUMINAIRE MAY VARY DUE TO VARIATION IN ELECTRICAL VOLTAGE, TOLERANCE IN LAMPS, AND OTHER VARIABLE FIELD CONDITIONS. THESE LIGHTING CALCULATIONS ARE NOT A SUBSTITUTE FOR INDEPENDENT ENGINEERING ANALYSIS OF LIGHTING SYSTEM SUITABILITY AND SAFETY. THE ENGINEER AND/OR ARCHITECT IS RESPONSIBLE TO REVIEW FOR COMPLIANCE OF ALL APPLICABLE ENERGY CODES AND LIGHTING QUALITY STANDARDS.

DATE: \_\_\_\_\_ LOCATION: \_\_\_\_\_  
 TYPE: \_\_\_\_\_ PROJECT: \_\_\_\_\_  
 CATALOG #: \_\_\_\_\_

# RATIO Series

AREA/SITE LIGHTER

## FEATURES

- Low profile LED area/site luminaire with a variety of IES distributions for lighting applications such as retail, commercial and campus parking lots
- Featuring Micro Strike Optics which maximizes target zone illumination with minimal losses at the house-side, reducing light trespass issues
- Visual comfort standard
- Compact and lightweight design with low EPA
- 3G rated for high vibration applications including bridges and overpasses
- Control options including photo control, occupancy sensing, NX Distributed Intelligence™ and 7-Pin with networked controls
- Best in class surge protection available



See Certification Specifications

## RELATED PRODUCTS

- ⌘ [Airo](#) ⌘ [Cimarron LED](#) ⌘ [Ratio Family](#)

## CONTROL TECHNOLOGY



## SPECIFICATIONS

### CONSTRUCTION

- Rectilinear form mimics the traditional shoebox form factor keeping a similar but updated style and appearance, ideal for retrofit applications
- Die-cast housing with hidden vertical heat fins that are optimal for heat dissipation while keeping a clean smooth outer surface
- Corrosion resistant, die-cast aluminum housing with powder coat paint finish

### OPTICS

- Entire optical aperture illuminates to create a larger luminous surface area resulting in a low glare appearance without sacrificing optical performance
- 80, 160, 320 or 480 midpower LEDs
- 3000K, 4000K or 5000K (70 CRI) CCT
- Zero uplight at 0 degrees of tilt
- Field rotatable optics

### INSTALLATION

- Standard square arm mount, compatible with B3 drill pattern
- Optional universal mounting block for ease of installation during retrofit applications. Available as an option or accessory for square and round poles.
- Knuckle arm fitter option available for 2-3/8" OD tenon. Max tilt of 60 degrees with 4 degree adjustable increments. (Restrictions apply for 7-pin options)

### ELECTRICAL

- Universal 120-277 VAC or 347-480 VAC input voltage, 50/60 Hz

### ELECTRICAL (CONTINUED)

- Ambient operating temperature -40°C to 40°C
- Drivers have greater than 90% power factor and less than 20% THD
- LED drivers have output power over-voltage, over-current protection and short circuit protection with auto recovery
- Field replaceable surge protection device provides 20kA protection meeting ANSI/IEEE C62.41.2 Category C High and Surge Location Category C3; Automatically takes fixture off-line for protection when device is compromised

### CONTROLS

- Photo control, occupancy sensor and wireless available for complete on/off and dimming control
- 7-pin ANSI C136.41-2013 photocontrol receptacle option available for twist lock photocontrols or wireless control modules (control accessories sold separately)
- 0- 10 V Dimming Drivers are standard and dimming leads are extended out of the luminaire unless control options require connection to the dimming leads. Must specify if wiring leads are to be greater than the 6" standard
- SiteSync™ wireless control system is available via 7-pin See ordering information and details at: [www.hubbellighting.com/sitesync](http://www.hubbellighting.com/sitesync)
- NX Distributed Intelligence™ available with in fixture wireless control module, features dimming and occupancy sensor
- wiSCAPE® available with in fixture wireless control module, features dimming and occupancy sensor via 7-pin

### CERTIFICATIONS

- DLC® (DesignLights Consortium Qualified), with some Premium Qualified configurations. Please refer to the DLC website for specific product qualifications at [www.designlights.org](http://www.designlights.org)
- Listed to UL1598 and CSA C22.2#250.0-24 for wet locations and 40°C ambient temperatures
- 3G rated for ANSI C136.31 high vibration applications
- Fixture is IP66 rated
- Meets IDA recommendations using 3K CCT configuration at 0 degrees of tilt
- This product qualifies as a "designated country construction material" per FAR 52.225-11 Buy American-Construction Materials under Trade Agreements effective 04/23/2020. See [Buy American Solutions](#)

### WARRANTY

- 5 year limited warranty
- See [HLI Standard Warranty](#) for additional information

KEY DATA	
Lumen Range	3,000–48,000
Wattage Range	25–340
Efficacy Range (LPW)	118–155
Fixture Projected Life (Hours)	L70>60K
Weights lbs. (kg)	13.5–24 (6.1–10.9)

# RATIO SERIES

AREA/SITE LIGHTER

## ORDERING GUIDE

Example: RAR1-80L-25-3K7-2-UNV-ASQ-BL-NXWE-BC

CATALOG #

### ORDERING INFORMATION

Series	# LEDs - Wattage	CCT/CRI	Distribution	Optics Rotation	Voltage
<b>RAR1</b> Ratio Area Size 1	<b>80L-25</b> 25W - 3,000 Lumens	<b>3K7</b> 3000K, 70 CRI	<b>2</b> IES TYPE II	Blank for no rotation	<b>UNV</b> Universal 120-277V
	<b>80L-39</b> 39W - 5,200 Lumens	<b>4K7</b> 4000K, 70 CRI	<b>3</b> IES TYPE III	L Optic rotation left	<b>120</b> 120V
	<b>80L-50</b> 50W - 6,000 Lumens	<b>5K7</b> 5000K, 70 CRI	<b>4W</b> IES TYPE IV	R Optic rotation right	<b>208</b> 208V
	<b>160L-70</b> 70W - 9,000 Lumens		<b>5QW</b> IES TYPE V		<b>240</b> 240V
	<b>160L-100</b> 100W - 12,000 Lumens				<b>277</b> 277V
	<b>160L-115</b> 115W - 15,000 Lumens				<b>347</b> 347V
	<b>160L-135</b> 135W - 18,000 Lumens				<b>480</b> 480V
<b>RAR2</b> Ratio Area Size 2	<b>320L-110</b> 110W - 15,000 Lumens				
	<b>320L-140</b> 140W - 18,000 Lumens				
	<b>320L-165</b> 165W - 21,000 Lumens				
	<b>480L-185</b> 185W - 24,000 Lumens				
	<b>480L-210</b> 210W - 27,000 Lumens				
	<b>480L-240</b> 240W - 30,000 Lumens				
	<b>480L-255</b> 255W - 36,000 Lumens				
	<b>480L-295</b> 295W - 42,000 Lumens				
	<b>480L-340</b> 340W - 48,000 Lumens				

Mounting	Color	Control Options Network	Options
<b>ASQ</b> Arm mount for square pole/flat surface	<b>BLT</b> Black Matte Textured	<b>NXWE</b> NX Wireless Enabled (module + radio)	<b>BC</b> Backlight control
<b>ASQU</b> Universal arm mount for square pole/flat surface	<b>BLS</b> Black Gloss Smooth	<b>NXSPW_F</b> NX Wireless, PIR Occ. Sensor, Daylight Harvesting <sup>4</sup>	<b>F</b> Fusing (must specify voltage)
<b>Mounting Round Poles</b>		<b>NXSP_F</b> NX, PIR Occ. Sensor, Daylight Harvesting <sup>4</sup>	<b>TB</b> Terminal block
<b>A_</b> Arm mount for round pole <sup>1</sup>	<b>DBT</b> Dark Bronze Matte Textured	<b>Control Options Other</b>	
<b>A_U</b> Universal arm mount for round pole <sup>1</sup>	<b>DBS</b> Dark Brone Gloss Smooth	<b>SCP-40F</b> Programmable occupancy sensor <sup>3</sup>	Notes: 1 Replace " " with "3" for 3.5"-4.13" OD pole, "4" for 4.18"-5.25" OD pole, "5" for 5.5"-6.5" OD pole 2 Not available with 25, 50, 255, 295 & 340W configurations 3 At least one SCPREMOTE required to program SCP motion sensor 4 Replace " " with "14" for up to 14' mounting height, "40F" for 15-40' mounting height 5 Replace " " with "12" for up to 12' mounting height
<b>Mounting Other</b>		<b>7PR</b> 7-Pin twist lock receptacle	
<b>WB</b> Wall bracket	<b>GTT</b> Graphite Matte Textured	<b>7PR-SC</b> 7-Pin receptacle with shorting cap	
<b>MAF</b> Mast arm fitter for 2-3/8" OD horizontal arm	<b>LGS</b> Light Grey Gloss Smooth	<b>7PR-MD40F</b> Low voltage sensor for 7PR	
<b>K</b> Knuckle	<b>PSS</b> Platinum Silver Smooth	<b>7PR-TL</b> 7-Pin PCR with photocontrol	
	<b>WHT</b> White Matte Textured	<b>Sensors</b>	
	<b>WHS</b> White Gloss Smooth	<b>BTS_F</b> Bluetooth Programmable, PIR Occupancy/Daylight Sensor, 360° lens <sup>4</sup>	
	<b>VGT</b> Verde Green Textured	<b>BTSO_F</b> Bluetooth Programmable, PIR Occupancy/Daylight Sensor, 360° lens, up to 12' mounting height <sup>5</sup>	
	<b>Color Option</b>		
	<b>CC</b> Custom Color		

### STOCK ORDERING INFORMATION

Catalog Number	Lumens	Wattage	LED Count	CCT/CRI	Voltage	Distribution	Mounting	Finish
RAR1-100-4K-3	12,000	100W	160L	4000K/70CRI	120-277V	Type 3	Square Arm	Bronze
RAR1-100-4K-4W	12,000	100W	160L	4000K/70CRI	120-277V	Type 4W	Square Arm	Bronze
RAR1-135-4K-3	18,000	135W	160L	4000K/70CRI	120-277V	Type 3	Square Arm	Bronze
RAR1-135-4K-4W	18,000	135W	160L	4000K/70CRI	120-277V	Type 4W	Square Arm	Bronze
RAR2-165-4K-3	21,000	165W	320L	4000K/70CRI	120-277V	Type 3	Square Arm	Bronze
RAR2-165-4K-4W	21,000	165W	320L	4000K/70CRI	120-277V	Type 4W	Square Arm	Bronze

# RATIO SERIES

AREA/SITE LIGHTER

## OPTIONS AND ACCESSORIES - STOCK (ORDERED SEPARATELY)

Catalog Number	Description
<input type="checkbox"/> RARRPA3DB	Round pole adapter 3.5" to 4.13" for ASQ arm, 3.5" to 4.13" OD pole, dark bronze finish
<input type="checkbox"/> RARA3UDB	Universal mount for square pole or round pole 3.5" to 4.13", dark bronze finish
<input type="checkbox"/> RARBC80L	Ratio blacklight control 80L
<input type="checkbox"/> RARBC160L	Ratio blacklight control 160L
<input type="checkbox"/> RARBC320L	Ratio blacklight control 320L
<input type="checkbox"/> RARBC480L	Ratio blacklight control 480L

## ACCESSORIES AND REPLACEMENT PARTS - MADE TO ORDER

Catalog Number	Description
<input type="checkbox"/> RAR-ASQU-XX	Universal arm mount for square pole/flat surface <sup>2</sup>
<input type="checkbox"/> RAR-A_U-XX	Universal arm mount for round poles <sup>1,2</sup>
<input type="checkbox"/> RAR-RPA_-XX	Round pole adapter <sup>1,2</sup>
<input type="checkbox"/> SETAVP-XX	4" square pole top tenon adapter, 2 3/8" OD slipfitter <sup>2</sup>
<input type="checkbox"/> RETAVP-XX	4" round pole top tenon adapter; 2 3/8" OD slipfitter for max. Four fixtures (90o); order 4" round pole adapters separately <sup>2</sup>
<input type="checkbox"/> BIRD-SPIKE-3	Ratio size 1 bird deterrent/spikes
<input type="checkbox"/> BIRD-SPIKE-4	Ratio size 2 bird deterrent/spikes
<input type="checkbox"/> RARWB-XX	Wall bracket - use with Mast Arm Fitter or Knuckle <sup>2</sup>

1 Replace "-" with "3" for 3.5"-4.13" OD pole, "4" for 4.18"-5.25" OD pole, "5" for 5.5"-6.5" OD pole

2 Replace "XX" with desired color/paint finish

## CONTROLS

### Control Options

#### Standalone

<b>SW7PR</b>	SiteSync™ on fixture module via 7PR
<b>SWUSB</b>	SiteSync™ Software on USB
<b>SWTAB</b>	SiteSync™ Windows Tablet
<b>SWBRG</b>	SiteSync™ Wireless Bridge Node
<b>SWFC</b>	SiteSync™ Field Commission Serve
<b>SCPREMOTE</b>	Order at least one per project location to program and control

#### Networked – Wireless

<b>WIR-RME-L</b>	wiSCAPE External Fixture Module <sup>1,2</sup>
------------------	--

#### NX Networked – Wireless

<b>NXOFM-1R1D-UNV</b>	NX Wireless, Daylight Harvesting, BLE, 7 pin twisted lock
-----------------------	---

Notes:

- 1 Works with external networked photosensor
- 2 wiSCAPE Gateway required for system programming

# RATIO SERIES

AREA/SITE LIGHTER

## PERFORMANCE DATA

Description	Nominal Wattage	System Watts	Dist. Type	5K (5000K NOMINAL 70 CRI)					4K (4000K NOMINAL 70 CRI)					3K (3000K NOMINAL 80 CRI)				
				Lumens	LPW	B	U	G	Lumens	LPW	B	U	G	Lumens	LPW	B	U	G
RAR1	25	25.4	2	3438	135	1	0	1	3445	136	1	0	1	3240	128	1	0	1
			3	3460	136	1	0	1	3467	136	1	0	1	3260	128	1	0	1
			4W	3406	134	1	0	1	3412	134	1	0	1	3209	126	1	0	1
			5QW	3483	137	2	0	1	3490	137	2	0	1	3282	129	2	0	1
	39	39	2	5263	139	1	0	2	5273	139	1	0	2	4960	131	1	0	2
			3	5297	139	1	0	2	5308	140	1	0	2	4991	131	1	0	2
			4W	5200	137	1	0	2	5210	137	1	0	2	4900	129	1	0	2
			5QW	5333	140	3	0	1	5344	141	3	0	1	5025	132	3	0	1
	50	49.8	2	6310	127	1	0	2	6323	127	1	0	2	5946	120	1	0	2
			3	6349	128	1	0	2	6362	128	1	0	2	5983	120	1	0	2
			4W	6233	125	1	0	2	6245	126	1	0	2	5873	118	1	0	2
			5QW	6392	129	3	0	1	6405	129	3	0	1	6023	121	3	0	1
	70	68.4	2	9486	139	1	0	2	9505	139	1	0	2	8938	131	1	0	2
			3	9544	140	1	0	2	9563	140	1	0	2	8993	131	1	0	2
			4W	9395	137	1	0	2	9414	138	1	0	2	8853	129	1	0	2
			5QW	9608	140	4	0	2	9628	141	4	0	2	9054	132	4	0	2
	100	90.0	2	11976	133	2	0	2	12000	133	2	0	2	11285	125	2	0	2
			3	12050	134	2	0	2	12074	134	2	0	2	11354	126	2	0	2
			4W	11861	132	2	0	2	11885	132	2	0	2	11177	124	2	0	2
			5QW	12131	135	4	0	2	12155	135	4	0	2	11431	127	4	0	2
	115	109.7	2	15572	142	2	0	2	15494	141	2	0	2	14871	136	2	0	2
			3	15833	144	2	0	2	15754	144	2	0	2	15121	138	2	0	2
			4W	15281	139	2	0	3	15205	139	2	0	3	14623	133	2	0	3
			5QW	15732	143	4	0	2	15653	143	4	0	2	15024	137	4	0	2
	135	133.3	2	17971	135	3	0	3	17881	134	3	0	3	17163	129	3	0	3
			3	18272	137	2	0	2	18181	136	2	0	2	17450	131	2	0	2
			4W	17635	132	2	0	3	17547	132	2	0	3	16876	127	2	0	3
			5QW	18156	136	4	0	2	18065	136	4	0	2	17339	130	4	0	2

RAR2 Performance Data on next page

\* Lumen values are from photometric test performed in accordance with IESNA LM-79-08. Data is considered to be representative of the configurations shown. Actual performance may differ as a result of end-user environment and application.

# RATIO SERIES

AREA/SITE LIGHTER

## PERFORMANCE DATA

Description	Nominal Wattage	System Watts	Dist. Type	5K (5000K NOMINAL 70 CRI)					4K (4000K NOMINAL 70 CRI)					3K (3000K NOMINAL 80 CRI)				
				Lumens	LPW	B	U	G	Lumens	LPW	B	U	G	Lumens	LPW	B	U	G
RAR2	110	100.3	2	15326	153	2	0	3	15357	153	2	0	3	14442	144	2	0	3
			3	15421	154	2	0	3	15452	154	2	0	3	14531	145	2	0	3
			4W	15180	151	2	0	2	15210	152	2	0	2	14304	143	2	0	2
			5QW	15525	155	4	0	2	15556	155	4	0	2	14629	146	4	0	2
	140	133.2	2	19395	146	2	0	3	19434	146	2	0	3	18276	137	2	0	3
			3	19515	147	2	0	3	19554	147	2	0	3	18389	138	2	0	3
			4W	19210	144	2	0	3	19248	145	2	0	3	18101	136	2	0	3
			5QW	19647	148	5	0	3	19686	148	5	0	3	18513	139	5	0	3
	165	153.6	2	21651	141	3	0	3	21695	141	3	0	3	20402	133	3	0	3
			3	21785	142	3	0	3	21828	142	3	0	3	20527	134	3	0	3
			4W	21444	140	3	0	3	21487	140	3	0	3	20206	132	3	0	3
			5QW	21932	143	5	0	3	21976	143	5	0	3	20666	135	5	0	3
	185	174.5	2	26046	149	3	0	3	26098	150	3	0	3	24543	141	3	0	3
			3	26207	150	3	0	3	26259	150	3	0	3	24694	142	3	0	3
			4W	25797	148	3	0	4	25849	148	3	0	4	24308	139	3	0	4
			5QW	26384	151	5	0	3	26437	152	5	0	3	24861	143	5	0	3
	210	198.2	2	28848	145	3	0	4	28906	146	3	0	4	27184	137	3	0	4
			3	29027	146	3	0	4	29085	147	3	0	4	27351	138	3	0	4
			4W	28572	144	3	0	4	28630	144	3	0	4	26924	136	3	0	4
			5QW	29222	147	5	0	4	29281	148	5	0	4	27536	139	5	0	4
	240	226.9	2	32087	141	3	0	4	32151	142	3	0	4	30235	133	3	0	4
			3	32285	142	3	0	4	32350	143	3	0	4	30422	134	3	0	4
			4W	31780	140	3	0	4	31844	140	3	0	4	29946	132	3	0	4
			5QW	32503	143	5	0	4	32568	144	5	0	4	30627	135	5	0	4
	255	257.0	2	37040	144	3	0	4	36854	143	3	0	4	35373	138	3	0	4
			3	37660	147	3	0	4	37472	146	3	0	4	35966	140	3	0	4
			4W	36347	141	3	0	5	36166	140	3	0	5	34782	135	3	0	5
			5QW	37420	146	5	0	4	37233	145	5	0	4	35736	139	5	0	4
	295	294.0	2	41733	142	3	0	4	41524	141	3	0	4	39855	136	3	0	4
			3	42432	144	3	0	4	42220	144	3	0	4	40523	138	3	0	4
			4W	40953	139	3	0	5	40748	139	3	0	5	39190	133	3	0	5
			5QW	42162	143	5	0	4	41951	143	5	0	4	40264	137	5	0	4
340	347.1	2	48392	139	4	0	5	48150	139	4	0	5	46215	133	4	0	5	
		3	49203	142	3	0	4	48957	141	3	0	4	46989	135	3	0	4	
		4W	47488	137	4	0	5	47261	136	4	0	5	45443	131	4	0	5	
		5QW	48889	141	5	0	5	48645	140	5	0	5	46689	135	5	0	5	

\* Lumen values are from photometric test performed in accordance with IESNA LM-79-08. Data is considered to be representative of the configurations shown. Actual performance may differ as a result of end-user environment and application.

# RATIO SERIES

AREA/SITE LIGHTER

## ELECTRICAL DATA

# OF LEDS	Nominal Wattage	Input Voltage	Oper. Current (Amps)	System Power (Watts)
RAR1	25	120	0.21	25.4
		208	0.12	
		240	0.11	
		277	0.09	
	39	120	0.32	38.0
		208	0.18	
		240	0.16	
		277	0.14	
		347	0.11	
		480	0.08	
	50	120	0.42	49.8
		208	0.24	
		240	0.21	
		277	0.18	
	70	120	0.57	68.4
		208	0.33	
		240	0.29	
		277	0.25	
	100	120	0.75	90.0
		208	0.43	
		240	0.38	
		277	0.32	
	115	120	0.91	109.7
		208	0.53	
		240	0.46	
		277	0.40	
		347	0.32	
		480	0.23	
135	120	1.11	133.3	
	208	0.64		
	240	0.56		
	277	0.48		
	347	0.38		
		480	0.28	

# OF LEDS	Nominal Wattage	Input Voltage	Oper. Current (Amps)	System Power (Watts)
RAR2	110	120	0.84	100.3
		208	0.48	
		240	0.42	
		277	0.36	
	140	120	1.11	133.2
		208	0.64	
		240	0.56	
		277	0.48	
	165	120	1.28	153.6
		208	0.74	
		240	0.64	
	185	120	1.45	174.5
		208	0.84	
		240	0.73	
	210	120	1.65	198.3
		208	0.95	
		240	0.83	
		277	0.72	
	240	120	1.89	226.9
		208	1.09	
		240	0.95	
		277	0.82	
	255	120	2.14	257.0
		208	1.24	
		240	1.07	
		277	0.93	
		347	0.74	
	295	120	2.45	294.0
		208	1.41	
		240	1.23	
		277	1.06	
		347	0.85	
		480	0.61	
	340	120	2.89	347.1
		208	1.67	
		240	1.45	
277		1.25		
347		1.00		
480		0.72		

## LUMINAIRE AMBIENT TEMPERATURE FACTOR (LATF)

Ambient Temperature		Lumen Multiplier
0° C	32° F	1.03
10° C	50° F	1.01
20° C	68° F	1.00
25° C	77° F	1.00
30° C	86° F	0.99
40° C	104° F	0.98
50° C	122° F	0.97

Use these factors to determine relative lumen output for average ambient temperatures from 0-40°C (32-104°F).

## PROJECTED LUMEN MAINTENANCE

Ambient Temperature	OPERATING HOURS					
	0	25,000	TM-21-11 L90 36,000	50,000	100,000	L70 (Hours)
25°C / 77°F	1.00	0.97	0.95	0.93	0.86	238,000
40°C / 104°F	0.99	0.96	0.95	0.93	0.85	225,000

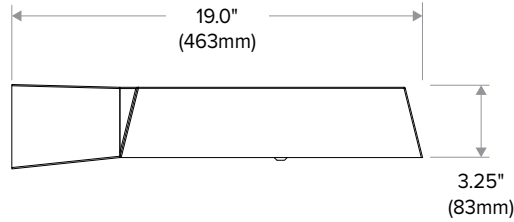
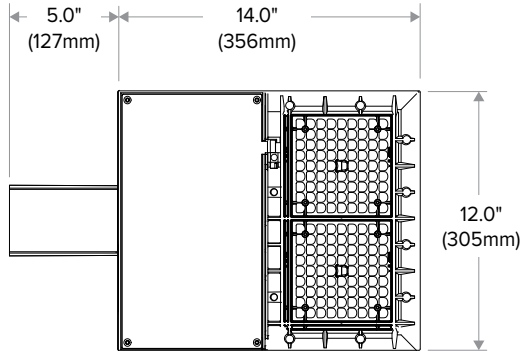


# RATIO SERIES

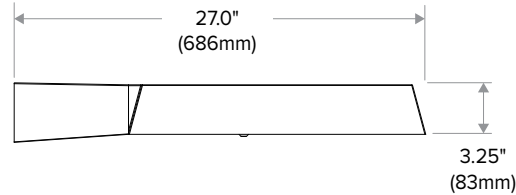
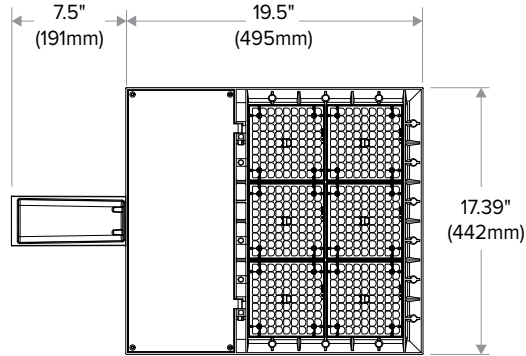
AREA/SITE LIGHTER

## DIMENSIONS

RAR1

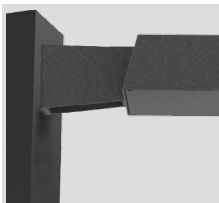


RAR2



## ADDITIONAL INFORMATION

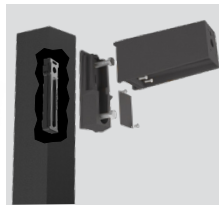
### MOUNTING



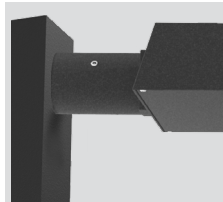
**Arm Mount** – Fixture ships with integral arm for ease of installation. Compatible with Hubbell Outdoor B3 drill pattern.



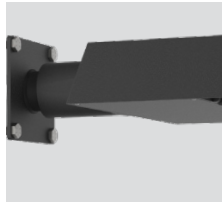
**Knuckle** – Knuckle mount 15° aiming angle increments for precise aiming and control, fits 2-3/8" tenons or pipes.



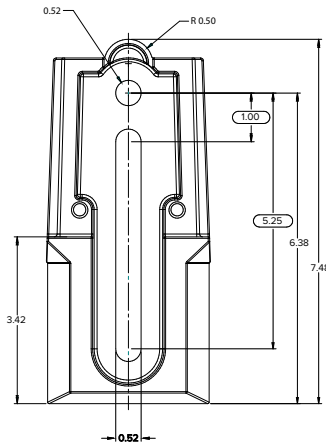
**Universal Mounting** – Universal mounting block for ease of installation. Compatible with drill patterns from 2.5" to 4.5"



**MAF** – Fits 2-3/8" OD arms Roadway applications.



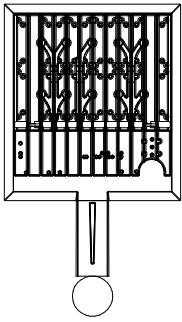
**Wall Mount** – Wall mount bracket designed for building mount applications.



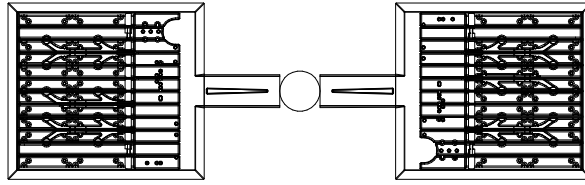
# RATIO SERIES

AREA/SITE LIGHTER

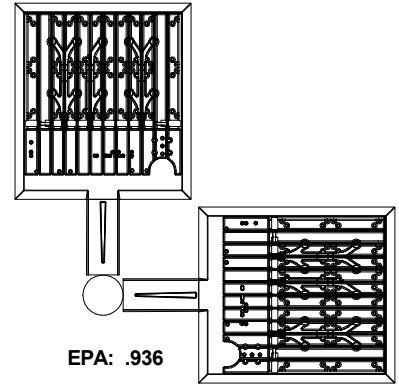
## EPA



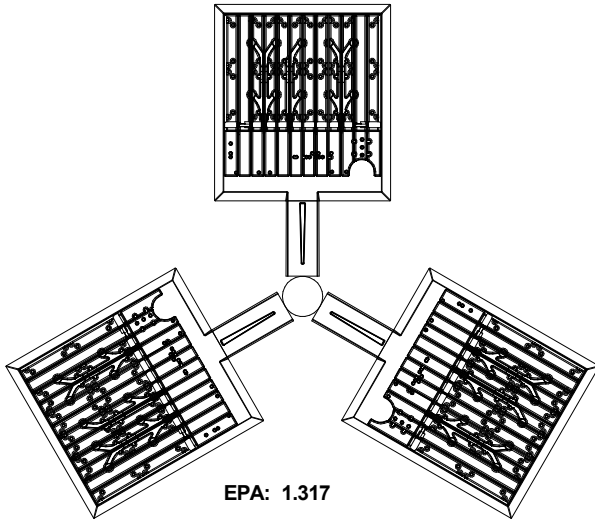
EPA: .607



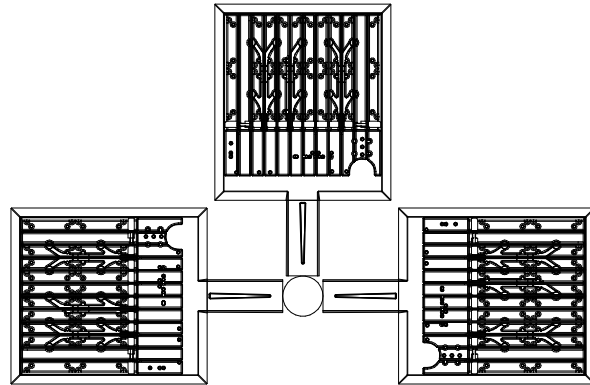
EPA: 1.214



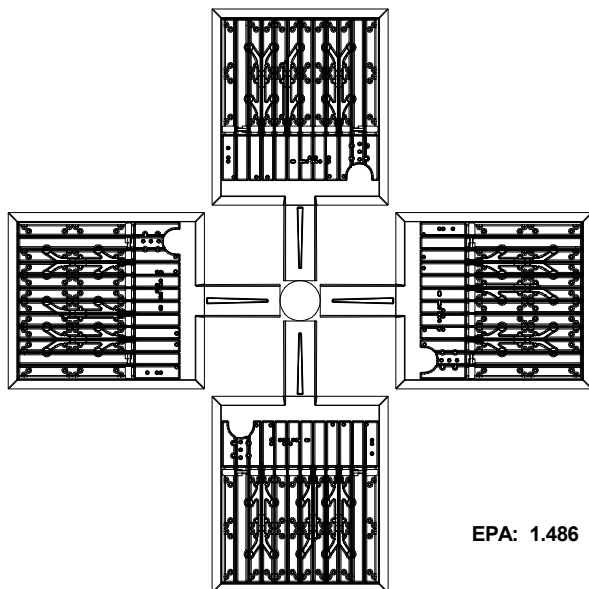
EPA: .936



EPA: 1.317



EPA: 1.486



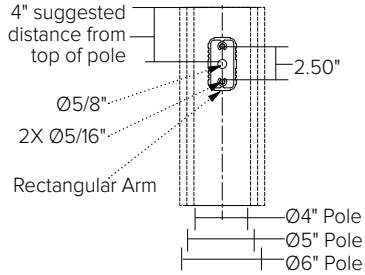
EPA: 1.486

# RATIO SERIES

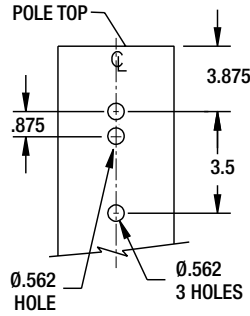
AREA/SITE LIGHTER

## ADDITIONAL INFORMATION (CONT'D)

### ARM MOUNT (ASQ) Compatible with Pole drill pattern B3



### UNIVERSAL MOUNTING (ASQU) Compatible with pole drill pattern S2



### SITESYNC 7-PIN MODULE



SW7PR



- SiteSync features in a new form
- Available as an accessory for new construction or retrofit applications (with existing 7-Pin receptacle)

### PROGRAMMED CONTROLS

#### ADD-AutoDim Timer Based Options

- Light delay options from 1-9 hours after the light is turned on to dim the light by 10-100%. To return the luminaire to its original light level there are dim return options from 1-9 hours after the light has been dimmed previously.

EX: ADD-6-5-R6

ADD Control Options	Configurations Choices	Example Choice Picked
Auto-Dim Options	1-9 Hours	6
Auto-Dim Brightness	0-9% Brightness	5
Auto-Dim Return	Delay 0-9 Hours	R6

#### ADT-AutoDim Time of Day Based Option

- Light delay options from 1AM-9PM after the light is turned on to dim the light by 10-100%. To return the luminaire to its original light level there are dim return options from 1AM-9PM after the light has been dimmed previously.

EX: ADT-6-5-R6

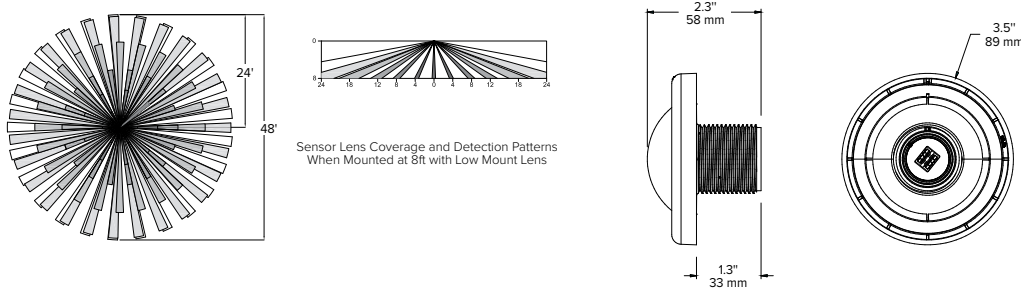
ADD Control Options	Configurations Choices	Example Choice Picked
Auto-Dim Options	12-3 AM and 6-11 PM	6
Auto-Dim Brightness	0-9% Brightness	5
Auto-Dim Return	12-6 AM and 9-11P	R6

# RATIO SERIES

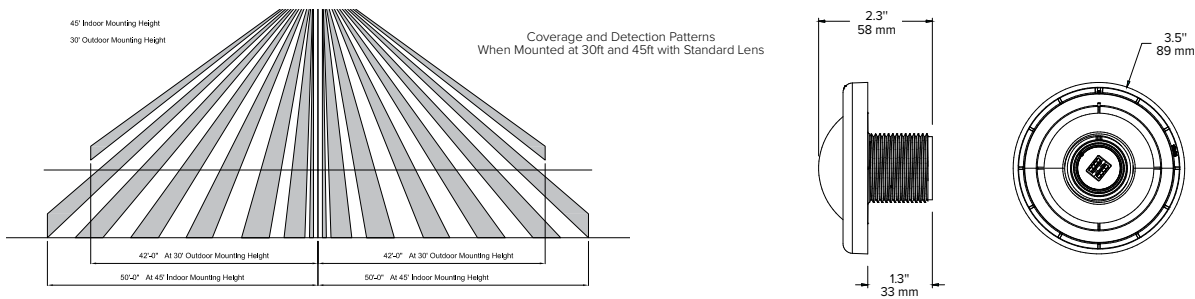
AREA/SITE LIGHTER

## ADDITIONAL INFORMATION (CONT'D)

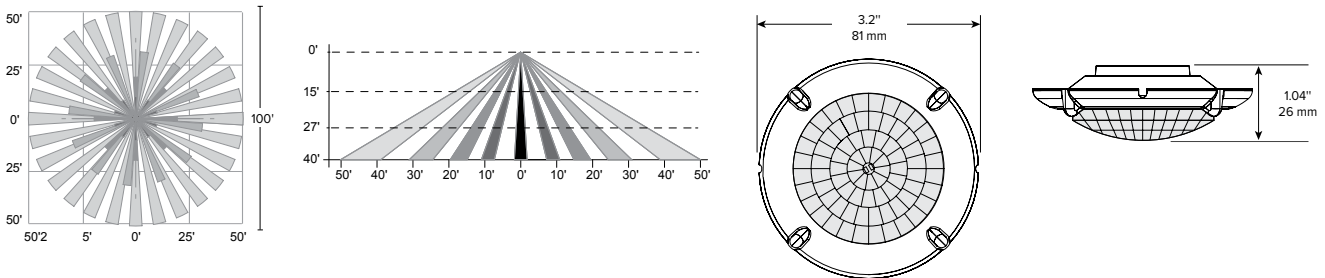
### NXSP-14F



### NXSP-30F



### SCP-40F



### RAR1 EPA

RAR-1	
EPA at 0°	EPA at 30°
.45ft. <sup>2</sup> .13m <sup>2</sup>	.56ft. <sup>2</sup> .17m <sup>2</sup>

### RAR2 EPA

RAR-2	
EPA at 0°	EPA at 30°
.55ft. <sup>2</sup> .17m <sup>2</sup>	1.48ft. <sup>2</sup> .45m <sup>2</sup>

### SHIPPING

Catalog Number	G.W(kg)/CTN	Carton Dimensions		
		Length Inch (cm)	Width Inch (cm)	Height Inch (cm)
RAR1	15 (6.8)	20.75 (52.7)	15.125 (38.4)	6.9375 (17.6)
RAR2	19 (8.6)	25 (63.5)	15.125 (38.4)	6.9375 (17.6)

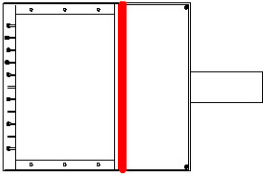
# RATIO SERIES

AREA/SITE LIGHTER

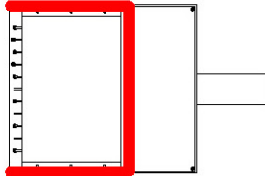
## ADDITIONAL INFORMATION (CONT'D)

### RATIO HOUSE SIDE SHIELD

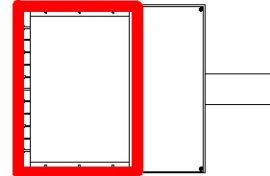
RARx HSS-90-B-xx



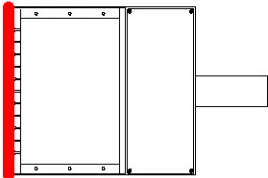
RARx HSS-270-BSS-xx



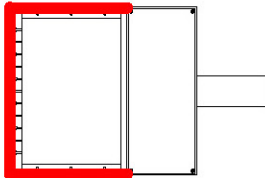
RARx HSS-360-xx



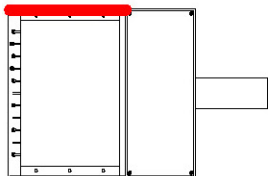
RARx HSS-90-F-xx



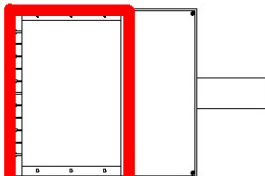
RARx HSS-270-FSS-xx



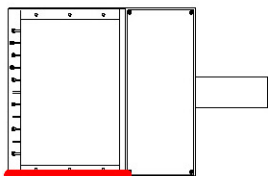
RARx HSS-90-S-xx



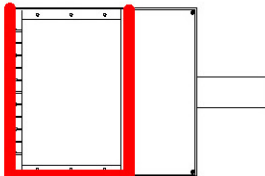
RARx HSS-270-FSB-xx



RARx HSS-90-S-xx



RARx HSS-270-FSB-xx



## USE OF TRADEMARKS AND TRADE NAMES

All product and company names, logos and product identifies are trademarks™ or registered trademarks® of Hubbell Lighting, Inc. or their respective owners. Use of them does not necessarily imply any affiliation with or endorsement by such respective owners.

DATE:	LOCATION:
TYPE:	PROJECT:
CATALOG #:	

# RATIO Wall

RWL1/RWL2 LED WALLPACK

## FEATURES

- Low profile LED wall luminaire with a variety of IES distributions for lighting applications such as retail, commercial and industrial building mount
- Featuring Micro Strike Optics which maximizes target zone illumination with minimal losses at the house-side, reducing light trespass issues
- Visual comfort standard
- Control options including photo control, occupancy sensing, NX Distributed Intelligence™, Wiscap and 7-Pin with networked controls
- Battery Backup options available for emergency code compliance
- Quick-mount adapter allows easy installation/maintenance
- 347V and 480V versions for industrial applications and Canada
- Stock versions available in 3500lm and 5500lm configurations at 4000K



## CONTROL TECHNOLOGY



## SPECIFICATIONS

### CONSTRUCTION

- Die-cast housing with hidden vertical heat fins that are optimal for heat dissipation while keeping a clean smooth outer surface
- Corrosion resistant, die-cast aluminum housing with powder coat paint finish
- Powder paint finish provides durability in outdoor environments. Tested to meet 1000 hour salt spray rating.

### OPTICS

- Entire optical aperture illuminates to create a larger luminous surface area resulting in a low glare appearance without sacrificing optical performance
- 48 or 160 midpower LEDs
- 3000K, 4000K or 5000K (70 CRI/80 CRI) CCT
- Zero uplight distributions
- LED optics provide IES type II, III and IV distributions. Type II only available in RWL2 configurations.

### INSTALLATION

- Quick-mount adapter provides easy installation to wall or to recessed junction boxes (4" square junction box)
- Designed for direct j-box mount.
- Integral back box contains 1/2" conduit hubs
- Integral back box standard with Dual Driver, Dual Power Feed, NX, Wiscap and battery versions (battery versions for RWL1 only)

### ELECTRICAL

- 120V-277V universal voltage 50/60Hz 0-10V dimming drivers
- 347V and 480V dimmable driver option for all wattages above 35W.

### ELECTRICAL (CONTINUED)

- Ambient operating temperature -40°C to 40°C
- Drivers have greater than .90 power factor and less than 20% Total Harmonic Distortion
- Driver RoHS and IP66
- Field replaceable surge protection device provides 20kA protection meeting ANSI/IEEE C62.41.2 Category C High and Surge Location Category C3; Automatically takes fixture off-line for protection when device is compromised
- Dimming drivers are standard and dimming leads are extended out of the luminaire unless control options require connection to the dimming leads. Must specify if wiring leads are to be greater than 6" standard.

### CONTROLS

- Photo control, occupancy sensor and wireless available for complete on/off and dimming control
- Button photocontrol is suitable for 120-277V operation
- 7-pin ANSI C136.41-2013 photocontrol receptacle option available for twist lock photocontrols or wireless control modules (control accessories sold separately)
- NX Distributed Intelligence™ available with in fixture wireless control module, features dimming and occupancy sensor
- wISCAPE® available with in fixture wireless control module, features dimming and occupancy sensor
- Integral Battery Backup provides emergency lighting for the required 90 minute path of egress
- Battery Backup suitable for operating temperatures -25°C to 40°C. RWL1 battery is 12.5W RWL2 battery is 18W



## RELATED PRODUCTS

- [Ratio Family](#)   [Ratio Area](#)   [Ratio Flood](#)

### CONTROLS (CONTINUED)

- Dual Driver and Dual Power Feed options creates product configuration with 2 internal drivers for code compliance
- Please consult brand or sales representative when combining control and electrical options as some combinations may not operate as anticipated depending on your application.

### CERTIFICATIONS

- Listed to UL1598 and CSAC22.2#250.0-24 for wet locations
- IP65 rated housing
- This product qualifies as a "designated country construction material" per FAR 52.225-11 Buy American-Construction Materials under Trade Agreements effective 04/23/2020. See Buy American Solutions
- DLC® (DesignLights Consortium Qualified), with some Premium Qualified configurations. Please refer to the DLC website for specific product qualifications at [www.designlights.org](http://www.designlights.org)

### WARRANTY

- 5 year limited warranty
- See [HLI Standard Warranty](#) for additional information

KEY DATA	
Lumen Range	1,300–18,800
Wattage Range	10–155
Efficacy Range (LPW)	119–148
Fixture Projected Life (Hours)	L70>60K
Weights lbs. (kg)	6.5/16.5 (2.9/7.5)

# RATIO WALL

RWL1/RWL2 LED WALLPACK

## ORDERING GUIDE

Example: RWL1-48L-10-3K7-2-UNV-BLS-E

CATALOG #

### ORDERING INFORMATION

Series	# LEDs - Wattage	CCT/CRI	Distribution	Voltage	Color	
RWL1 Ratio Wall 1	48L-10	1,000 Lumens <sup>4</sup>	2 IES TYPE II <sup>1</sup>	UNV 120-277V	BLT Black Matte Textured	
	48L-15	2,000 Lumens <sup>4</sup>			3 IES TYPE III	BLS Black Gloss Smooth
	48L-20	2,500 Lumens <sup>4</sup>			4W IES TYPE IV	DBT Dark Bronze Matte Textured
	48L-25	3,500 Lumens <sup>5</sup>	120 120V	DBS Dark Bronze Gloss Smooth		
	48L-35	4,500 Lumens	208 208V	GTT Graphite Matte Textured		
	48L-45	5,500 Lumens <sup>4</sup>	240 240V	LGS Light Grey Gloss Smooth		
	RWL2 Ratio Wall 2	160L-45	6,500 Lumens	277 277V		LGT Light Grey Matte Textured
		160L-50	7,500 Lumens	347 347V	PSS Platinum Silver Smooth	
160L-65		9,500 Lumens	480 480V	WHT White Matte Textured		
160L-80		11,000 Lumens		WHS White Gloss Smooth		
160L-95		13,000 Lumens		VGT Verde Green Textured		
160L-115		15,000 Lumens <sup>5</sup>		<b>Color Option</b>		
160L-135		17,500 Lumens		CC Custom Color		
160L-155	19,500 Lumens					

Control Options Network	
NXWE	NX Wireless Enabled (module + radio) <sup>5,7</sup>
NXSPW_F	NX Wireless, PIR Occ. Sensor, Daylight Harvesting <sup>4,5,7</sup>
NXSP_F	NX, PIR Occ. Sensor, Daylight Harvesting <sup>4,5,7</sup>
WIR	Wireless Controls, wiSCAPE™ <sup>2,6</sup>
Stand Alone Sensors	
SCP-8F	Remote control programmable line voltage sensor <sup>3,4</sup>
SCP-20F	Remote control programmable line voltage sensor <sup>3,4</sup>
BTS-14F	Bluetooth® Programmable, PIR Occupancy/Daylight Sensor <sup>10</sup>
BTS-40F	Bluetooth® Programmable, PIR Occupancy/Daylight Sensor <sup>10</sup>
BTSO-12F	Bluetooth® Programmable, PIR Occupancy/Daylight Sensor, up to 12' mounting height <sup>10</sup>
Control Options	
7PR_	7-Pin Receptacle <sup>6</sup>

Options*	
F	Fusing <sup>3</sup>
E	Emergency Battery Backup <sup>7,8,9</sup>
EH	Emergency Battery w/ Heater Option <sup>7,8</sup>
2DR	Dual Driver <sup>4,6,11</sup>
2PF	Dual Power Feed <sup>4,6,11</sup>
PC	Button Photocontrol <sup>8</sup>

Notes:

- 1 Only available with RWL2
  - 2 wiSCAPE Gateway required for system programming
  - 3 Specific voltage selection is required
  - 4 Not available with 347/480V
  - 5 Replace "\_" with "14" for up to 14' mounting height, "40" for up to 40' mounting height
  - 6 This item is located in the integral backbox which will be automatically added onto the fixture if chosen.
  - 7 This item is located in the integral backbox for RWL1 configurations only.
  - 8 Option only available at 120 or 277V
  - 9 2DR and 2PF can't be combined with E and EH due to space limitations
  - 10 Not available in RWL1 or 2 PF
  - 11 Available only in UNV in 25, 35 and 45 Watt in RWL1; Not available in RWL1 10, 15 and 25 Watt.
- \* Based on space limitations, some options may not be able to be combined

### STOCK ORDERING INFORMATION

Catalog Number	Lumens	Wattage	LED Count	CCT/CRI	Voltage	Distribution	Finish
RWL1-48L-25-4K-3	3500lm	25	48L	4000K/70CRI	120-277V	Type III	Dark Bronze Textured
RWL1-48L-25-4K-4W	3500lm	25	48L	4000K/70CRI	120-277V	Type IV Wide	Dark Bronze Textured
RWL1-48L-45-4K-3	5500lm	45	48L	4000K/70CRI	120-277V	Type III	Dark Bronze Textured
RWL1-48L-45-4K-4W	5500lm	45	48L	4000K/70CRI	120-277V	Type IV Wide	Dark Bronze Textured

### CONTROLS

Control Options	
<b>Standalone</b>	
SCPREMOTE	Order at least one per project location to program and control

### ACCESSORIES AND REPLACEMENT PARTS - MADE TO ORDER

Catalog Number	Description
<input type="checkbox"/> WP-BB-XXX	Accessory for conduit entry <sup>1</sup>

- Notes:  
1 replace "xxx" with color option

# RATIO WALL

RWL1/RWL2 LED WALLPACK

## PERFORMANCE DATA

Description	Nominal Wattage	System Watts	Dist. Type	5K (5000K NOMINAL 70 CRI)					4K (4000K NOMINAL 70 CRI)					3K (3000K NOMINAL 70 CRI)				
				Lumens	LPW	B	U	G	Lumens	LPW	B	U	G	Lumens	LPW	B	U	G
RWL1	10	10.1	3	1362	135	0	0	1	1355	134	0	0	1	1303	129	0	0	1
			4W	1343	133	0	0	1	1336	132	0	0	1	1285	127	0	0	1
	15	14.5	3	1972	136	1	0	1	1962	135	1	0	1	1887	130	1	0	1
			4W	1945	134	0	0	1	1935	133	0	0	1	1861	128	0	0	1
	20	19.9	3	2722	137	1	0	1	2709	136	1	0	1	2605	131	1	0	1
			4W	2685	135	1	0	1	2672	134	1	0	1	2569	129	1	0	1
	25	28.0	3	3749	134	1	0	1	3732	133	1	0	1	3588	128	1	0	1
			4W	3698	132	1	0	1	3680	131	1	0	1	3538	126	1	0	1
	35	36.9	3	4751	129	1	0	2	4728	128	1	0	2	4546	123	1	0	1
			4W	4685	127	1	0	2	4663	126	1	0	2	4483	121	1	0	2
	45	46.5	3	5812	125	1	0	2	5784	124	1	0	2	5562	120	1	0	2
			4W	5731	123	1	0	2	5704	123	1	0	2	5485	118	1	0	2
RWL2	45	46.1	2	6701	145	1	0	2	6668	145	1	0	2	6412	139	1	0	2
			3	6812	148	1	0	2	6780	147	1	0	2	6519	141	1	0	2
			4W	6678	145	1	0	2	6646	144	1	0	2	6390	139	1	0	2
	50	54.0	2	7747	143	1	0	2	7710	143	1	0	2	7413	137	1	0	2
			3	7876	146	1	0	2	7838	145	1	0	2	7537	140	1	0	2
			4W	7720	143	1	0	2	7683	142	1	0	2	7388	137	1	0	2
	65	67.2	2	9539	142	1	0	2	9494	141	1	0	2	9129	136	1	0	2
			3	9699	144	2	0	2	9652	144	2	0	2	9281	138	2	0	2
			4W	9507	141	2	0	2	9461	141	2	0	2	9097	135	2	0	2
	80	80.8	2	11228	139	2	0	2	11174	138	2	0	2	10745	133	2	0	2
			3	11416	141	2	0	2	11361	141	2	0	2	10924	135	2	0	2
			4W	11190	138	2	0	2	11136	138	2	0	2	10708	133	2	0	2
	95	93.2	2	13148	141	2	0	2	13085	140	2	0	2	12582	135	2	0	2
			3	13368	143	2	0	2	13304	143	2	0	2	12792	137	2	0	2
			4W	13103	141	2	0	2	13040	140	2	0	2	12539	135	2	0	2
	115	109.8	2	15102	138	2	0	3	15030	137	2	0	3	14452	132	2	0	3
			3	15354	140	2	0	3	15281	139	2	0	3	14693	134	2	0	3
			4W	15050	137	2	0	3	14978	136	2	0	3	14402	131	2	0	3
	135	137.1	2	17533	128	2	0	3	17449	127	2	0	3	16778	122	2	0	3
			3	17826	130	2	0	3	17740	129	2	0	3	17058	124	2	0	3
			4W	17473	127	2	0	3	17389	127	2	0	3	16720	122	2	0	3
	155	156.8	2	19495	124	2	0	3	19402	124	2	0	3	18656	119	2	0	3
			3	19821	126	2	0	3	19726	126	2	0	3	18967	121	2	0	3
			4W	19542	125	2	0	3	19448	124	2	0	3	18700	119	2	0	3



# RATIO WALL

RWL1/RWL2 LED WALLPACK

## LUMINAIRE AMBIENT TEMPERATURE FACTOR (LATF)

Ambient Temperature		Lumen Multiplier
0°C	32°F	1.03
10°C	50°F	1.01
20°C	68°F	1.00
25°C	77°F	1.00
30°C	86°F	0.99
40°C	104°F	0.98
50°C	122°F	0.97

Use these factors to determine relative lumen output for average ambient temperatures from 0-40°C (32-104°F).

## PROJECTED LUMEN MAINTENANCE

Ambient Temperature	OPERATING HOURS					
	0	25,000	TM-21-11 L90 36,000	50,000	100,000	L70 (Hours)
25°C / 77°F	1.00	0.97	0.96	0.95	0.91	408,000
40°C / 104°F	0.99	0.96	0.95	0.94	0.89	356,000

## ELECTRICAL DATA

# OF LEDS	Nominal Wattage	Input Voltage	Oper. Current (Amps)	System Power (Watts)
RWL1	10	120	0.08	10.1
		208	0.05	
		240	0.04	
		277	0.04	
		347	0.03	
		480	0.02	
	15	120	0.12	14.5
		208	0.07	
		240	0.06	
		277	0.05	
		347	0.04	
		480	0.03	
	20	120	0.17	19.9
		208	0.10	
		240	0.08	
		277	0.07	
		347	0.06	
		480	0.04	
	25	120	0.23	28.0
		208	0.13	
		240	0.12	
		277	0.10	
		347	0.08	
		480	0.06	
35	120	0.31	36.9	
	208	0.18		
	240	0.15		
	277	0.13		
	347	0.11		
	480	0.08		
45	120	0.39	46.5	
	208	0.22		
	240	0.19		
	277	0.17		
	347	0.13		
	480	0.10		

# OF LEDS	Nominal Wattage	Input Voltage	Oper. Current (Amps)	System Power (Watts)
RWL2	45	120	0.38	46.1
		208	0.22	
		240	0.19	
		277	0.17	
		347	0.13	
		480	0.10	
	50	120	0.45	54.0
		208	0.26	
		240	0.23	
		277	0.19	
		347	0.16	
		480	0.11	
	65	120	0.56	67.2
		208	0.32	
		240	0.28	
		277	0.24	
		347	0.19	
		480	0.14	
	80	120	0.67	80.8
		208	0.39	
		240	0.34	
		277	0.29	
		347	0.23	
		480	0.17	
	95	120	0.78	93.2
		208	0.45	
		240	0.39	
		277	0.34	
		347	0.27	
		480	0.19	
	115	120	0.92	109.8
		208	0.53	
		240	0.46	
		277	0.40	
		347	0.32	
		480	0.23	
	135	120	1.14	137.1
		208	0.66	
		240	0.57	
		277	0.49	
		347	0.40	
		480	0.29	
155	120	1.31	156.8	
	208	0.75		
	240	0.65		
	277	0.57		
	347	0.45		
	480	0.33		

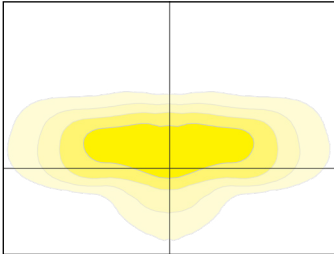
# RATIO WALL

RWL1/RWL2 LED WALLPACK

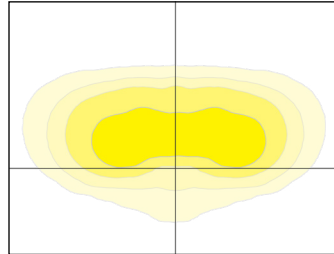
## PHOTOMETRY

Mounting Height: 30ft

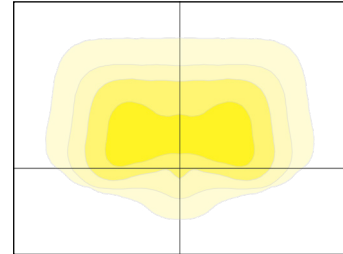
Type II



Type III



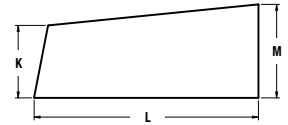
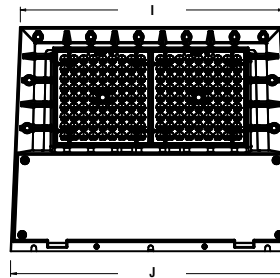
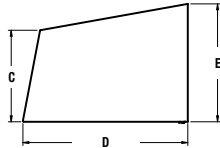
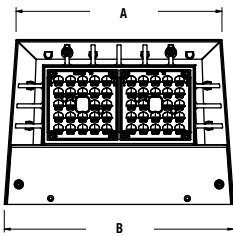
Type VI



## DIMENSIONS

RWL1

RWL2

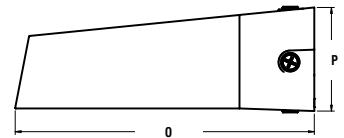
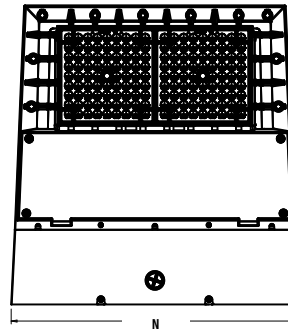
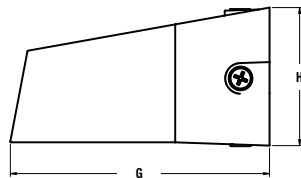
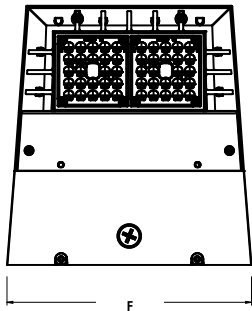


A	B	C	D	E	Weight
8.7"	9.7"	3.9"	7.0"	5.0"	6.5 lbs (2.95 kgs)
221mm	246mm	99mm	178mm	127mm	

I	J	K	L	M	Weight
14.0"	15.0"	3.9"	12.0"	5.0"	16.5 lbs (7.48 kgs)
356mm	381mm	99mm	305mm	127mm	

RWL1 with  
Integral Back Box

RWL2 with  
Integral Back Box



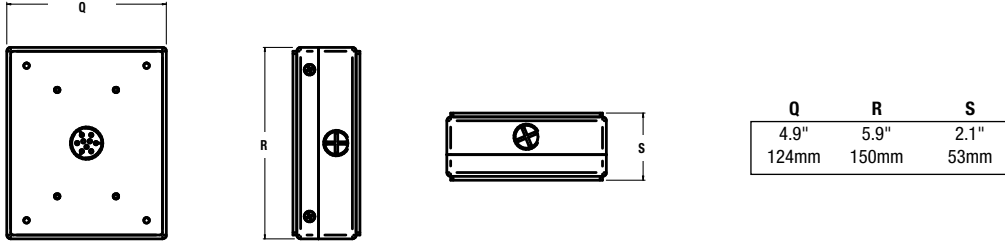
F	G	H
10.4"	11.0"	5.9"
264mm	279mm	150mm

N	O	P
15.4"	16.0"	5.5"
391mm	406mm	140mm

**RATIO WALL**  
RWL1/RWL2 LED WALLPACK

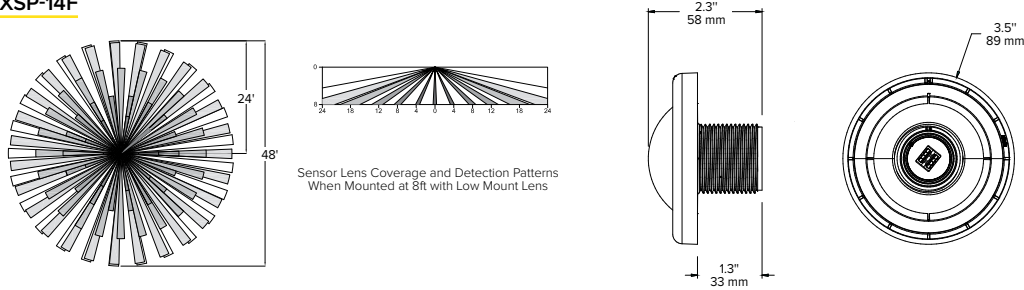
**DIMENSIONS (CONTINUED)**

**Back Box Accessory**

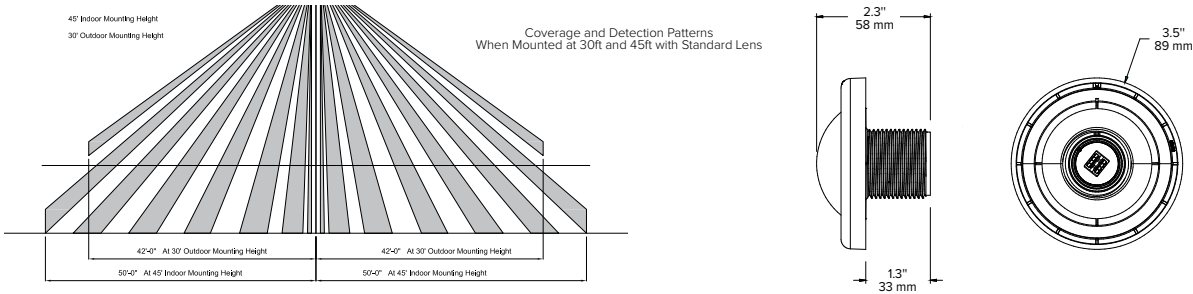


**ADDITIONAL INFORMATION**

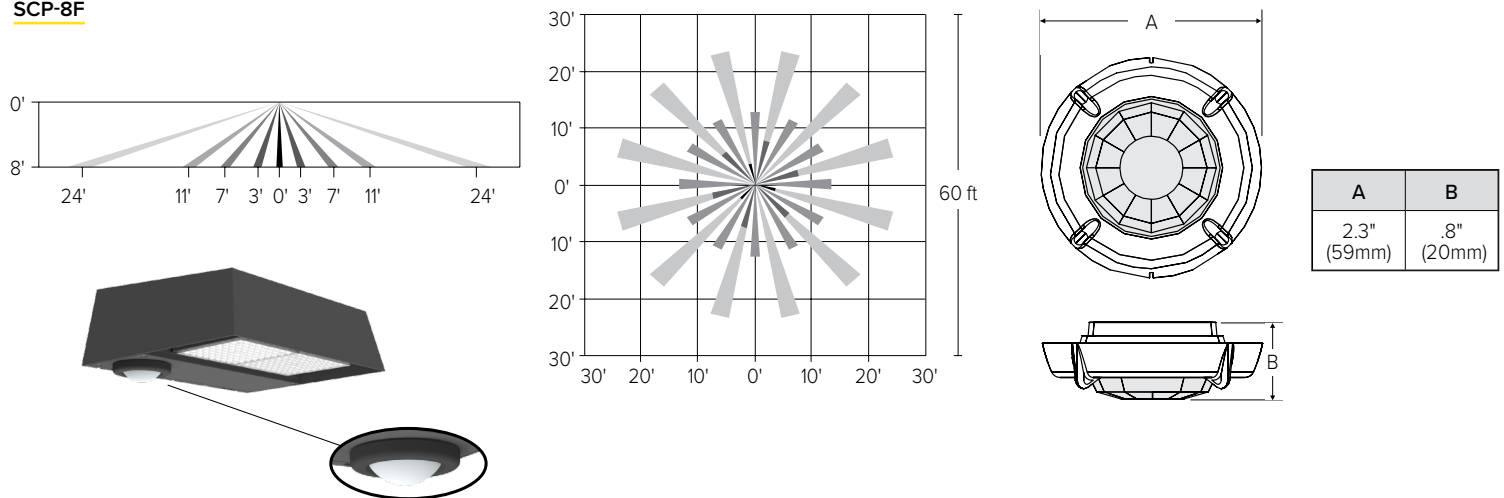
**NXSP-14F**



**NXSP-40F**



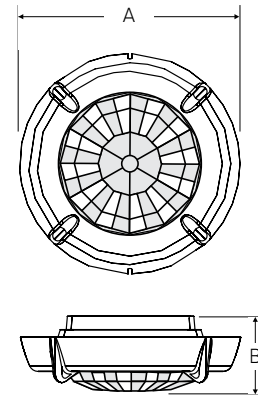
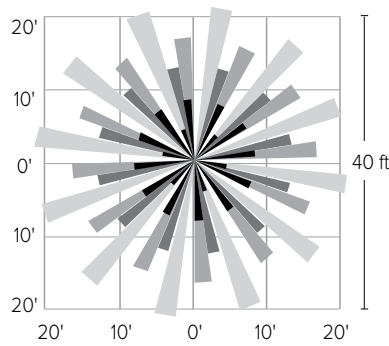
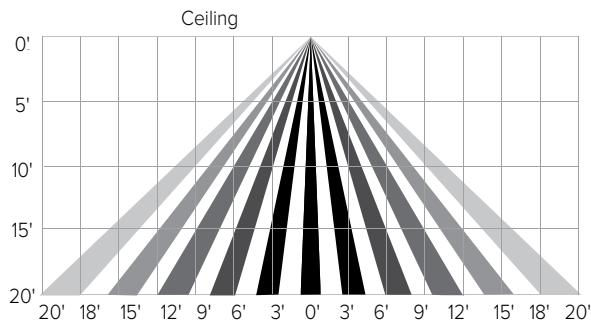
**SCP-8F**



# RATIO WALL

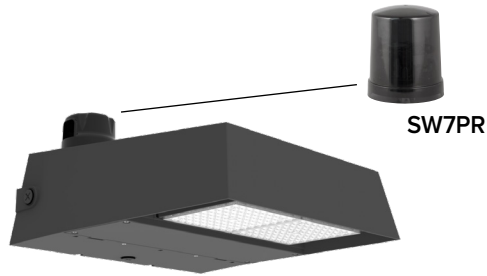
RWL1/RWL2 LED WALLPACK

## SCP-20F



A	B
2.3" (59mm)	.8" (20mm)

## SITESYNC 7-PIN MODULE



- SiteSync features in a new form
- Available as an accessory for new construction or retrofit applications (with existing 7-Pin receptacle)

# MJDII Architects, Inc.

16775 Addison Road, Suite 310  
Addison, Texas 75001  
Tel: (972) 866-8600  
Fax: (972) 866-8601  
E-Mail: MJDII@MJDII.com

## Memorandum

To City of Rockwall, Texas, Planning and Zoning Department  
From Brent T. Northington – MJDII Architects, Inc.  
Re SPR Distribution Center – Variance Request Letter  
Date 19 August 2022  
Project SPR Distribution Center  
Copies

City of Rockwall Planning and Zoning Staff:

Per our in-person meeting held at your office on 7/28/2022, and a phone conversation with Mr. Ryan Miller (Director of Planning) on 8/11/2022, it is our understanding that there are no known variances being requested at this time.

Pending review comments by City of Rockwall Planning and Zoning staff of our Site Plan Submittal Package submitted on 8/19/2022, variances may be requested at a later date, once we are made aware of which variances need to be requested, if any.

Sincerely,



Brent T. Northington  
Project Architect  
MJDII Architects, Inc.